

11-6-2015

2014 Silvicultural Activities Report

Maine Forest Service

Maine Forest Service
Forest Policy and Management Division

Follow this and additional works at: http://digitalmaine.com/for_docs

Recommended Citation

Maine Forest Service and Maine Forest Service, "2014 Silvicultural Activities Report" (2015). *Forest Service Documents*. 44.
http://digitalmaine.com/for_docs/44

This Text is brought to you for free and open access by the Agriculture, Conservation and Forestry at Maine State Documents. It has been accepted for inclusion in Forest Service Documents by an authorized administrator of Maine State Documents. For more information, please contact statedocs@maine.gov.

2014 Silvicultural Activities Report

including Annual Report on Clearcutting and Precommercial Activities

Compiled from the 2014 Landowner Reports and other survey instruments.
Data collected under the provisions of Title 12 MRS §8885

Published:
November 6, 2015



**Department of Agriculture, Conservation and Forestry
Maine Forest Service**

Forest Policy and Management Division

#22 SHS, Augusta, ME 04333

(207)287-2791 OR 1-800-367-0223(instate)

www.maineforestservice.gov; www.bewoodswise.org

We help you make informed decisions about Maine's forests

This publication is available online at:www.maineforestservice.gov

Printed under appropriation 010-01A-5400-52

Report Highlights

Harvesting and Land Use Changes

- 424,456 acres were harvested in 2014, an increase from 415,255 acres in 2013.
- 395,427 acres were "partially harvested" (partial and shelterwood totals) in 2014, a 2% increase from 385,784 acres in 2013.
- The number of harvests reported increased from 5,723 to 5,921.

Clearcutting:

1. The total area clearcut decreased, from 25,055 acres in 2013 to 23,369 acres in 2014. Clearcutting amounted to 5.5% of total harvested acres.
2. Landowners owning more than 100,000 acres in Maine created 93% of all clearcut acreage (21,663 acres).
3. Average clearcut size in 2014 was 25 acres. Landowners owning more than 100,000 acres had an average clearcut size of 36 acres. Landowners owning less than 100,000 acres had an average clearcut size of 14 acres. 26 clearcuts larger than 75 acres were created in 2013.
4. The primary silvicultural reason for clearcutting reported by large landowners was the removal of poor quality, intolerant, under stocked, short lived or mature overstories where the retention of the residual overstory trees is not justified for further increase in value, as a source of seed, or for protection of the new stand.

Land Use Changes:

- Harvesting to convert land from forest management to some other land use increased 28% from 4,416 acres in 2013 to 5,660 acres in 2014.

Precommercial Silvicultural Activities

Herbicide Use:

- For site preparation a increase of 48%, from 913 acres in 2013 to 1,355 acres in 2014.
- To release crop trees from competing vegetation increased 190%, from 1,367 acres in 2013 to 3,966 acres in 2014.

Timber Stand Improvement (TSI):

- Precommercial thinning of young stands with spacing saws increased 24%, from 13,474 acres in 2013 to 16,759 acres in 2014. 94% of the acreage was done by landowners owning more than 100,000 acres (15,774 acres).

Planting:

- Tree planting decreased 20%, from 6,554 acres in 2013 to 5,222 acres in 2014. 98% of the planting acreage was by landowners owning more than 100,000 acres (5,121 acres).

Forester Involvement

- In 2014, licensed foresters supervised harvesting on 299,559 acres, compared to 297,101 acres in 2013. 71% of all harvest acres in 2014 had a licensed forester involved; a slight decrease from 2013 (72%). Licensed Forester supervision occurred on 29% (777 out of 2,663 harvests) of the harvests on family forests (<= 100 acres in all ownership types) in 2014. This is similiar to 2013 (696 out of 2,470 harvests).

2014 Harvesting and Land Use Changes

Commercial Harvest Information by Landowner Size and Type		Acres						
		Partial Harvests	Shelterwood			Clearcut	Land Use Change	Total Harvest
			Initial or Intermediate Entry	Final Entry	Total Shelterwood			
OwnershipType	Ownership Size							
Forest Industry Woodlands	1 to 100 acres	3	0	0	0	0	0	3
	101 to 1,000 acres	93	34	10	44	0	0	137
	1,001 to 100,000 acres	12,380	329	770	1,099	15	106	13,600
	100,000 + acres	8,802	5,795	12,843	18,638	5,479	0	32,919
	SubTotal	21,278	6,158	13,623	19,781	5,494	106	46,659
Investor Timberlands	1 to 100 acres	10	0	0	0	0	0	10
	101 to 1,000 acres	90	57	53	110	0	0	200
	1,001 to 100,000 acres	607	1,330	663	1,993	67	87	2,754
	100,000 + acres	14,958	17,679	29,131	46,810	10,022	66	71,856
	SubTotal	15,665	19,066	29,847	48,913	10,089	153	74,820
Non-Industrial Land	1 to 100 acres	43,740	3,642	5,787	9,429	631	1,313	55,113
	101 to 1,000 acres	67,130	7,331	7,627	14,958	692	1,545	84,325
	1,001 to 100,000 acres	25,061	5,419	14,165	19,584	233	903	45,781
	100,000 + acres	26,629	20,925	45,076	66,001	6,134	35	98,799
	SubTotal	162,560	37,317	72,655	109,972	7,690	3,796	284,018
Other Woodlands (Govt, etc.)	1 to 100 acres	186	38	0	38	0	54	278
	101 to 1,000 acres	1,232	54	107	161	30	1,166	2,589
	1,001 to 100,000 acres	1,909	614	693	1,307	38	133	3,387
	100,000 + acres	11,390	290	745	1,035	28	252	12,705
	SubTotal	14,717	996	1,545	2,541	96	1,605	18,959
2014 Totals:		214,220	63,537	117,670	181,207	23,369	5,660	424,456
Percent of 2014 Harvest:		50.47%	14.97%	27.72%	42.69%	5.51%	1.33%	100.00%
2013 Totals:		220,967	67,206	97,611	164,817	25,055	4,416	415,255
Percent Change from 2013 to 2014:		-3%	-5%	21%	10%	-7%	28%	2%

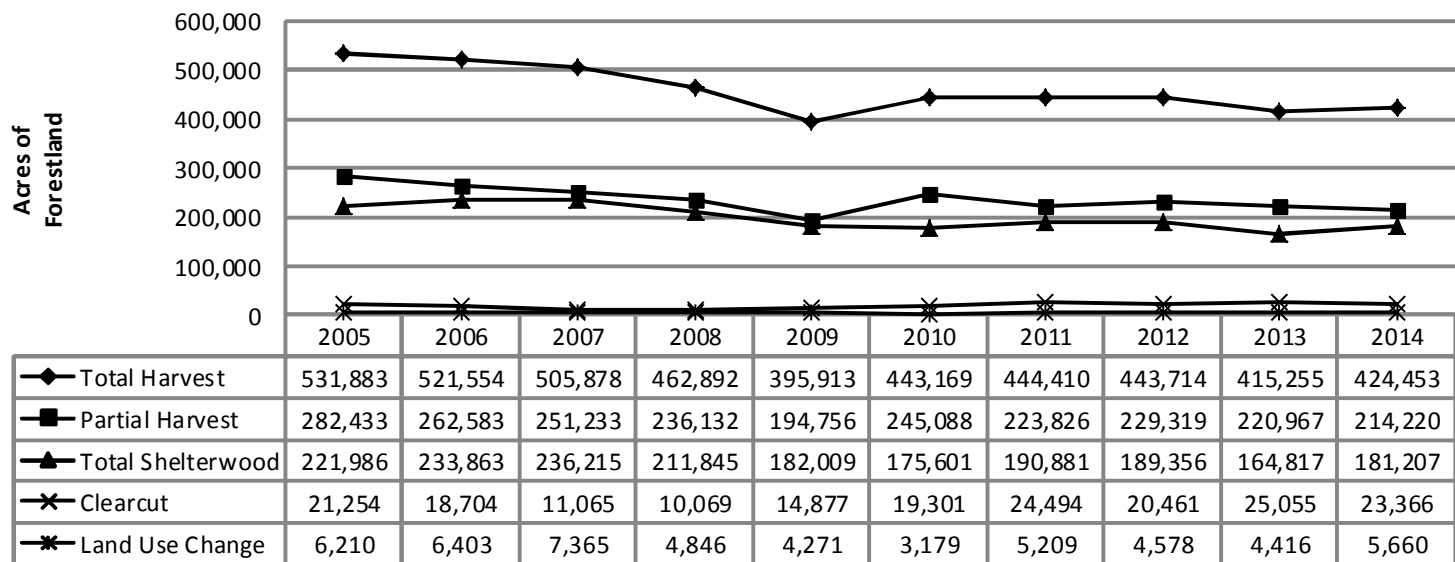
2014 Precommercial Activities and Professional Assistance

Ownership Type	Ownership Size	Precommercial Activities by Landowner Size and Type				Number of Reported Harvests	Licensed Forester Involvement by Landowner Size and Type	
		Acres					Number of Harvests	Total Acres
		Herbicide Use		TSI	Tree Planting			
Site Prep	Release							
Forest Industry Woodlands	1 to 100 acres	0	0	0	0	0	0	0
	101 to 1,000 acres	0	0	0	0	5	1	8
	1,001 to 100,000 acres	0	0	0	0	61	46	8,932
	100,000 + acres	0	0	8,635	3,833	86	62	32,834
	Subtotal	0	0	8,635	3,833	152	109	41,774
Investor Timberlands	1 to 100 acres	0	0	0	0	1	1	10
	101 to 1,000 acres	20	0	27	6	4	4	200
	1,001 to 100,000 acres	0	19	0	0	11	10	2,735
	100,000 + acres	7	685	1,586	103	155	140	63,406
	Subtotal	27	704	1,613	109	171	155	66,351
Non-Industrial Land	1 to 100 acres	26	14	396	41	2,644	771	20,299
	101 to 1,000 acres	30	77	265	45	2,001	730	34,789
	1,001 to 100,000 acres	0	0	297	8	444	257	32,716
	100,000 + acres	1,272	3,171	5,550	1,185	332	292	86,181
	Subtotal	1,328	3,262	6,508	1,279	5,421	2,050	173,985
Other Woodlands (Govt, etc.)	1 to 100 acres	0	0	0	1	18	5	134
	101 to 1,000 acres	0	0	0	0	55	28	1,613
	1,001 to 100,000 acres	0	0	0	0	41	36	3,338
	100,000 + acres	0	0	3	0	63	58	12,364
	Subtotal	0	0	3	1	177	127	17,449
2014 Totals:		1,355	3,966	16,759	5,222	5,921	2,441	299,559
2013 Totals:		913	1,367	13,474	6,554	5,723	2,297	297,101
Change from 2013 to 2014:		48%	190%	24%	-20%	3%	6%	1%

Definitions:

- Ownership Type**
- Forest Industry Land:** Woodlands owned by a forest products industry; usually most of the wood harvested is used by that industry.
 - Investor Timberlands** Woodlands owned by organizations, including Timberland Investment Management Organizations (TIMOs) and Real Estate Investment Trusts (REITs) that hold timberland assets as fiduciaries for the benefit of others.
 - Non-Industrial Land:** Woodlands privately owned but NOT by a forest industry. These include private individuals and other non-forest product industries.
 - Other woodlands:** Woodlands owned by other entities not listed above -- including local, state, federal, or tribal governments.
- Types of Harvests**
- Partial Harvest:** Harvest where trees are removed individually or in small (<5 acre) patches.
 - Shelterwood:** Harvest of mature trees from a forest site in two or more stages. The first stage removes only a portion of the trees to allow establishment of regeneration before the remaining trees are removed in subsequent harvest.
 - Clearcut:** Harvest on a site larger than 5 acres that results in a residual basal area of acceptable growing stock trees >4.5" DBH of less than 30 square feet per acre, unless after harvesting the site has a well-distributed stand of acceptable growing stock 3 feet tall for softwood and 5 feet for hardwoods (Overstory Removal). Refer to the latest copy of the Maine Forest Service Rules Chapter 20 for additional information. It can be found on the Maine Forest Service website at http://www.state.me.us/doc/mfs/rules_regs/index.htm
 - Change of Land Use:** Harvest conducted to convert forestland to another land use such as house lots, farm pastures, etc.

Harvesting Trends in Maine 2005-2014



2014 Annual Report on Clearcutting and Precommercial Activities

Compiled from the 2014 Landowner Reports and other survey instruments. Data collected under the provisions of the Forest Resources Assessment Program, 12 MRS § 8878-A

County	Large Landowners (own >100,000 acres)										All Other Landowners				All Landowners	
	Precommercial Activities		Clearcuts > 75 acres in size		Purpose for Clearcut (see explanation below)						Acres					
	Acres		#	Acres	Acres						TSI	Planted	Clearcut			Acres Clearcut
	TSI	Planted			1	2	3	4	Sub Total	Avg. Size			Sub Total	Avg. Size		
Androscoggin	0	0	0	0	0	0	0	0	0	0	0	20	78	16	78	
Aroostook	10,806	3,680	17	1,980	5,437	0	79	0	5,516	75	70	26	162	11	5,678	
Cumberland	0	0	0	0	0	0	0	0	0	0	0	0	37	7	37	
Franklin	218	108	3	476	1,669	0	967	0	2,636	24	41	0	115	19	2,751	
Hancock	0	0	0	0	231	0	3	0	234	47	38	0	80	8	314	
Kennebec	0	0	0	0	0	0	0	0	0	0	32	0	2	2	2	
Knox	0	0	0	0	0	0	0	0	0	0	0	0	55	7	55	
Lincoln	0	0	0	0	0	0	0	0	0	0	29	0	18	9	18	
Oxford	109	0	3	711	2,826	0	737	0	3,563	24	381	0	257	14	3,820	
Penobscot	284	305	0	0	900	5	0	0	905	82	146	6	139	9	1,044	
Piscataquis	1,802	106	1	98	405	0	250	98	753	22	57	10	231	12	984	
Sagadahoc	0	0	0	0	0	0	0	0	0	0	23	3	0	0	0	
Somerset	2,227	922	2	330	6,994	96	127	330	7,547	21	130	22	199	12	7,746	
Waldo	0	0	0	0	0	0	0	0	0	0	20	10	188	13	188	
Washington	308	0	0	0	308	0	104	97	509	23	18	0	53	9	562	
York	20	0	0	0	0	0	0	0	0	0	0	4	92	10	92	
State Total:	15,774	5,121	26	3,595	18,770	101	2,267	525	21,663	36	985	101	1,706	14	23,369	

Purposes for creating clearcut:

1. Removal of poor quality, intolerant, under stocked, short lived or mature overstories where the retention of the residual overstory trees is not justified for further increase in value, as a source of seed, or for protection of the new stand.
2. Ecologically appropriate improvement or creation of wildlife habitat.
3. Removal of stands that, if partially harvested according to accepted silvicultural practice, are at high risk for windthrow due to factors such as soils, rooting depth, crown ratio or stem quality.
4. Harvesting of an existing plantation or other forest stand established by or previously treated with precommercial silvicultural activities.

This page intentionally left blank.



Maine Forest Service District Foresters

Oliver Markewicz

2281 Alfred Road
Lyman, ME 04002
Phone: (207) 441-3712
E-mail: oliver.c.markewicz@maine.gov

Morten Moesswilde

536 Waldoboro Road
Jefferson, ME 04348
Phone: (207) 441-2895
E-mail: morten.moesswilde@maine.gov

Sandy Walczyk

P.O. Box 130
Jonesboro, ME 04468
Phone: (207) 441-4924
E-mail: sandra.l.walczyk@maine.gov

Terri Coolong

P.O. Box 415
Old Town, ME 04468
Phone: (207) 215-0679
E-mail: terri.r.coolong@maine.gov

Dan Jacobs

2 Forestry Road
Island Falls, ME 04747
Phone: (207) 441-4128
E-mail: dan.jacobs@maine.gov

Shane Duigan

356 Shaker Road
Gray, ME 04039
Phone: (207) 592-1251
E-mail: shane.p.duigan@maine.gov

Patty Cormier

PO Box 416
Norridgewock, ME 04957
Phone: (207) 592-2238
E-mail: patty.cormier@maine.gov

Gordon Moore

P.O. Box 1107
Greenville, ME 04441
Phone: (207) 441-4139
E-mail: gordon.moore@maine.gov

Merle Ring

131 Bethel Road
West Paris, ME 04289
Phone: (207) 441-3276
E-mail: merle.ring@maine.gov

Randy Lagasse

45 Radar Road
Ashland, ME 04732
Phone: (207) 557-1086
E-mail: randy.lagasse@maine.gov

Maine Forest Service - Main Office - Augusta 1-800-367-0223 (instate) or 207-287-2791
email: forestinfo@maine.gov