

1934

The Transformation of a Maine Farm, 1934

Maine Department of Economic and Community Development

Maine Development Commission

Maine Department of Agriculture

Follow this and additional works at: https://digitalmaine.com/decd_docs

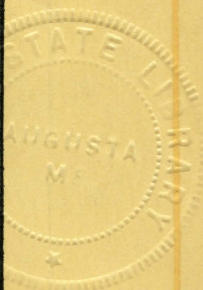
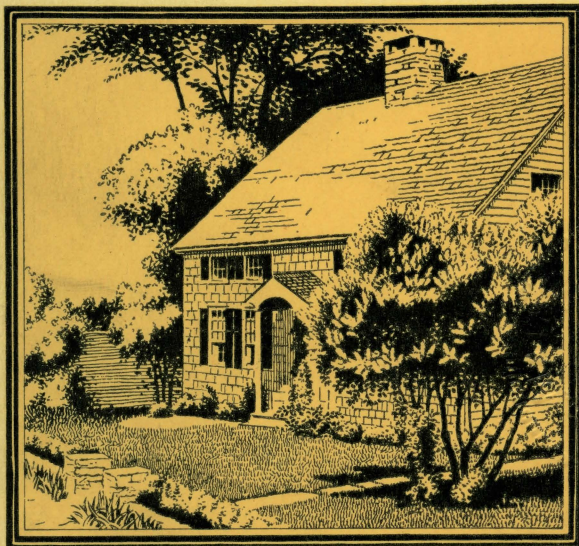
Recommended Citation

Maine Department of Economic and Community Development, Maine Development Commission, and Maine Department of Agriculture, "The Transformation of a Maine Farm, 1934" (1934). *Economic and Community Development Documents*. 40.
https://digitalmaine.com/decd_docs/40

This Text is brought to you for free and open access by the Economic and Community Development at Digital Maine. It has been accepted for inclusion in Economic and Community Development Documents by an authorized administrator of Digital Maine. For more information, please contact statedocs@maine.gov.

D 60.2 TN 772

The
Transformation
of a
**MAINE
FARM**



JUN 13 1934



BUY A FARM LIVE IN MAINE



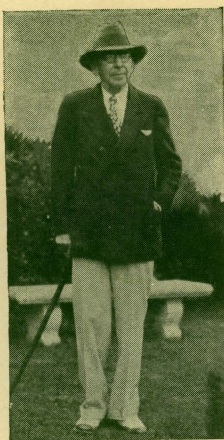
PUBLISHED BY THE
MAINE DEVELOPMENT COMMISSION
IN COOPERATION WITH THE
STATE DEPARTMENT OF AGRICULTURE
AUGUSTA, MAINE

JUN 13 1934

WHAT I THINK of MAINE

By Booth Tarkington

Booth Tarkington, the noted author, says: "To my mind Maine is the most beautiful state we have in this country, but even more appealing is its homeliness. It is easier for a stranger to feel at home in Maine than in almost any other place I ever knew. That is perhaps the reason why so many visitors cease to be visitors and get to think of Maine as home."





A Summer Home on Sheepscot Lake in the town of Palermo, Maine

The owner spent less than \$500 in alterations and repairs. He built two new dormers, painted outside and inside, put on blinds and general repairs.

The old wagon shed was torn down and a flower garden made.

As the owner says, "The expenditure of a very small amount of money can make a whale of a difference in appearance."

The Old Farmhouse

By MAUDE CLARK GAY

WE first saw the old farmhouse, gray, rambling, and a bit lonely even in the brilliant May sunshine. A row of maples, brave in new green, bordered the winding lane. In the hillside orchard behind it, the apple trees were a mass of riotous pink and white bloom.

Intrigued as we always are by deserted houses, we left the car at the foot of the hill and followed the path to the worn stone doorstep. Turning to look back we again saw glory of blooming trees, sturdy Norway pines and lilac bushes beaten by the winds and snows of many years. A garden that someone had loved with grass-grown clumps of daffodils and hardy tulips pushing their way to the light, bordered a mossy foot-path. Beyond lay spreading meadows and hills with the sunshine on the heights.

What a wonderful place for a summer home! The thought beat insistently as we strolled down to the pasture bars, where bells once tinkled as the cows came to drink at the little brook rioting joyously between ancient willows. Then back again to the stone steps as the twilight came on and a star winked out of the orchid haze in the western sky.

We did not forget the gray house with the lilacs guarding the door with its sacred cross. We often spoke of it and planned to ride that way again. But somehow time flew by on golden wings that summer and it was late August before we found the tree-bordered road again. Stopping the car at the foot of the lane, we thought we had made a mistake. Something had happened to the old farmhouse. The grass was trimmed close; bright

flowers were in bloom in the great beds guiltless of weeds; a swing was fastened between the sentinel maples half way up the hill; an automobile stood in front of the great barn that flaunted a new green roof; shining windows were bordered with the same shade of dull green. The house was no longer deserted. Hearing the voices of children ringing from the meadows we knew that it was a home.

On a pretext of being thirsty we ventured up to the doorway. Through the screened portal we caught a glimpse of bright cretonne, shining newly painted chairs, a table with colorful cloth. Then a smiling honey-tanned woman greeted us. "Come in," she said.

We accepted the invitation and, as we sipped the cool water, took courage from her gracious manner to tell of the first visit to the old house and of the lure that drew us back again.

"I can well understand," she answered, bright eyes aglow, lips curled with smiles. "We were just as much fascinated as you were and we needed the house."

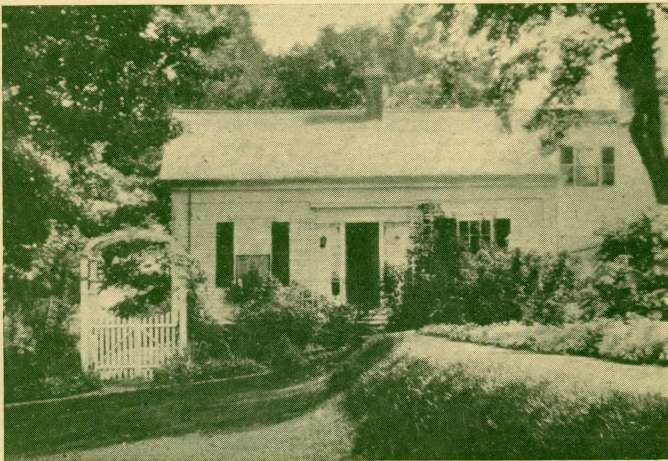
It was the old, old story. A nest egg tucked away in a bank with which to build a summer home. Closed bank, loss of money and courage. With vacation time came the urge to go somewhere, to take the children from the hot city, to heed the call of Maine answered by them for so many years. Setting forth with no destination, stopping at camps, days on the open road, then, at last, one hot July morning, the vision of the old farmhouse framed by drooping trees set high on the wind-swept hill. By denying themselves a bit and by lowered cost of living, they had been able to pay the modest price. They had found courage, happiness and peace.

"I had a letter from a friend, who is travelling in Italy," went on the lilting voice. "She was seeing many marvelous things, but Nature-lover,

as am I, she seemed most impressed by the purple hills, the blue waterways, long stretch of white plains with ruined castles and churches. She described Venice glowing in its rare setting, Genoa, nestling in the peace of green valleys. Suddenly as I read, the thought came to me—hills, valleys, lakes, mountains—why, we have them all in our own Maine.”

As she talked we looked down from that hilltop once more. This is what we saw—a river winding like a silver ribbon to the distant sea. Golden glory of sunset sky with lights twinkling out from white houses and the gleam of a pointing spire, vista of purple mountains with white clouds on their heights. The thought of Holman Day’s poem lingered tenderly on the lips:

“Home son or far son,
Is other land so dear?
There’s fame and gold
To coax and hold,
But it’s home—it’s home up here.”





Retaining the old charm
while adding the new

A Summer Home on
Windham Hill, Maine

“The Thunder of New Wings”

By THOMAS DREIER

MANY of us who used to live in city suburbs and who now live on farms wonder what malicious influence it was that kept us so long from country life.

Take the University of Maine graduate, trained as an engineer, who got his first job in the central west. His life was pleasant enough. He married, had two sons, and lived comfortably in a city apartment.

But something was missing. He was only a cog in the industrial machine and had little to say about the life he lived. He was in a great community but he never was made to feel that he was part of it. He and his wife talked things over and decided to escape before it was too late.

They returned to Maine long before the claws of depression began to tear the industrial fabric, bought a farm, began to raise chickens, and within three years he was a leader in his new community. He was president of his county Farm Bureau, vice-president of the local Chamber of Commerce, vice-president of the Rotary Club, and active in poultry organizations. His wife became president of the Garden Club, created a garden of her own that brought many interesting visitors, and the children had and still have the time of their lives.

In some way this man, starting almost from scratch, has \$40,000 invested in his own plant. He is in control of his own time. He has an opportunity to exercise his creativeness in many fields. He has grown. His life is well-rounded.

Another man, this one in his fifties, had been an expert in Ohio rubber factories. He had always enjoyed a good income. But something was not wholly satisfactory. He, too, longed for the country. Today he owns his uncle's old farm and is playing the part of a practical farmer. His securities sank out of sight and today the farm is almost his sole means of support. He boasts that last month his chickens netted him \$25. During the summer he gets a thrill out of being able to sell his vegetables above the market price because they are just a bit better than the usual market product.

These two men are not living lives of ease. They are not gentlemen farmers. They are practical, hard-working, money-earning men. Their wives do housework, help in the gardens, and have little time for bridge and tea parties. But all of them have found something that satisfies an inner longing. They are close to the soil. They witness at close hand the miracles of the seasons.

All over the country young college men whose wings carried them off to the cities where they hoped to find wealth and power, are flying back as fast as they can. You can hear the "thunder of new wings". Some of them, it is true, are only warming up. They have the longing. Their desire is mounting up. Tomorrow, perhaps, they will wing their way back to the country. Not as cogs in some great industrial enterprise, but as individuals expressing themselves in their own way, they will work out their salvation as their forefathers did.

And the country welcomes those who come with their eyes open and who realize that the man who fails in the city will probably also fail in the country. The country offers nothing but opportunity. It cannot supply a man with industry, intelligence, business sense, and the ability to find a market for his products.

It is no service to people who are unfit to urge them to buy farms. The wrong kind of people can be as helpless in the country, on the most fertile of farms, as they are in the city. Their opportunities for employment are probably fewer.

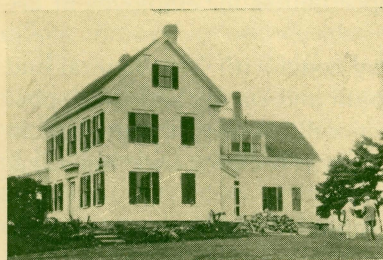
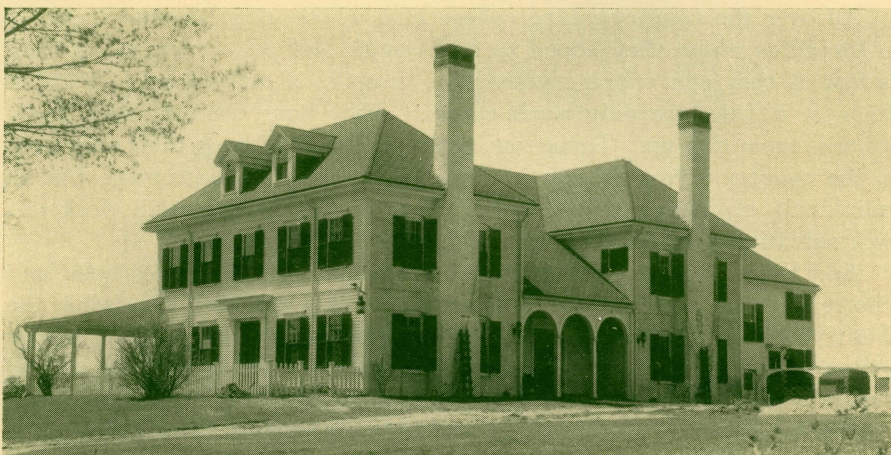
Young people with the pioneer spirit may come with little capital and fight their way through to success. Their youth and energy and their spirit of adventure will carry them forward. They will accept the hardships in the right spirit, as part of the game. They have time for experimenting. Their imaginations will enable them to triumph.

But old folks without either training or capital would do better to stay where they are. The farm offers them too much hardship to make the adventure worth their while. If they lack training but are fortunate enough to have a dependable yearly income of \$1,000 or so, then, if they have a love for the country, they are safe in buying a place.

All of us can remember dozens of instances of farmers who were successful and decided to retire. They turned over their farms to their children or sold them and moved to town. There some of them decided that they could not be idle but did not want to work hard. They started stores. They were sure that any person could run a store successfully. When they lost all their savings they learned that to run a store successfully calls for special ability.

The same is true of farms. Nothing is gained by urging city-trained people, who know little or nothing about farming, and who have no dependable income, to buy farms and try to make a living from them. Some people in that class may win through to a life of ease, but the chances are against them. Trained farmers have their trials and tribulations.

But all that does not mean that city people should not buy farms. They should buy them, though, with their eyes open. Thousands of city people are buying farms and are having the time of their lives playing with them. But note that they are playing with them. They are not dependent upon them for a livelihood. They do cultivate their own gardens, keep hens and



Summer Home of
Former Governor William Tudor Gardiner
in the town of Montsweag, Maine

pigs, have a dog or two, milk their own cows, and sniff the pure air that rolls in from the sea across sky blue waters of inland lakes or down from the mountains. They can stretch out their arms and point to a few hundred acres over which they rule.

They are the people who are in the best position to enjoy what the country offers. They do not necessarily have to be people with big incomes. They may have, as we said, \$1,000 a year. But they ought to have that much at least. That insures them food and warmth. They can make that amount go much farther than they can possibly make it go in the city. Less money is needed in the country. Old clothes serve a long time. The garden, orchard, hen yard and the wild berries that grow everywhere make their contribution to the family treasury. Subsistence farming of this kind is a pleasant adventure.

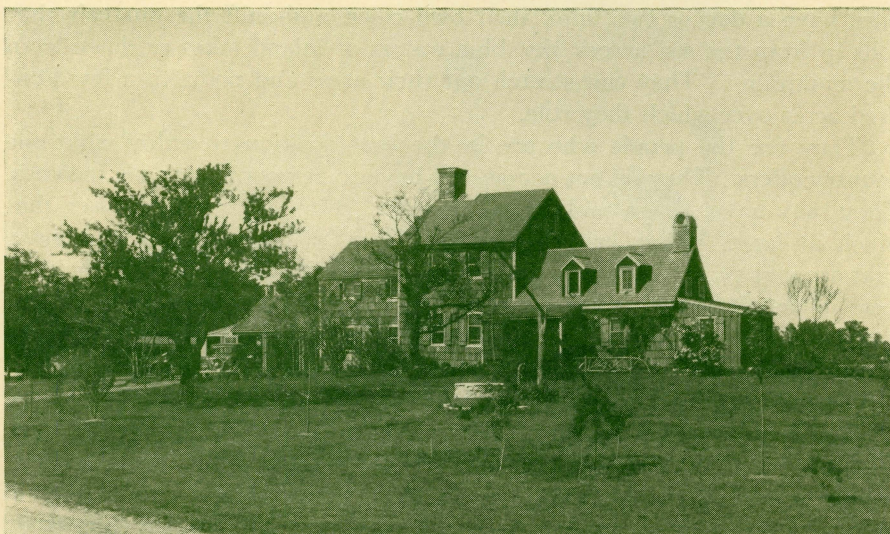
For those who have a bigger income, farm life offers unusual delights. It becomes a life of infinite variety. Those of us who treat our country homes as we did our homes in the suburbs, not as income producers, but as places in which to enjoy a full, rich, well-rounded, healthy life, could not be persuaded to go back. We are the ones who hear most clearly the thunder of the wings of those like us who are preparing to join us.

What the suburbs were to the cities two or three generations ago, the farm country is now. Good roads, powerful motor cars, airplanes, bus lines, coastal steamers, railroads—these make it possible for the country dweller to dash to the city at will. Even during the winter the roads are kept open.

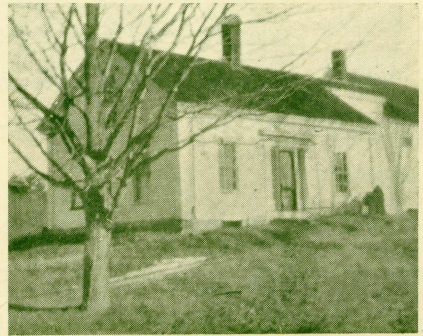
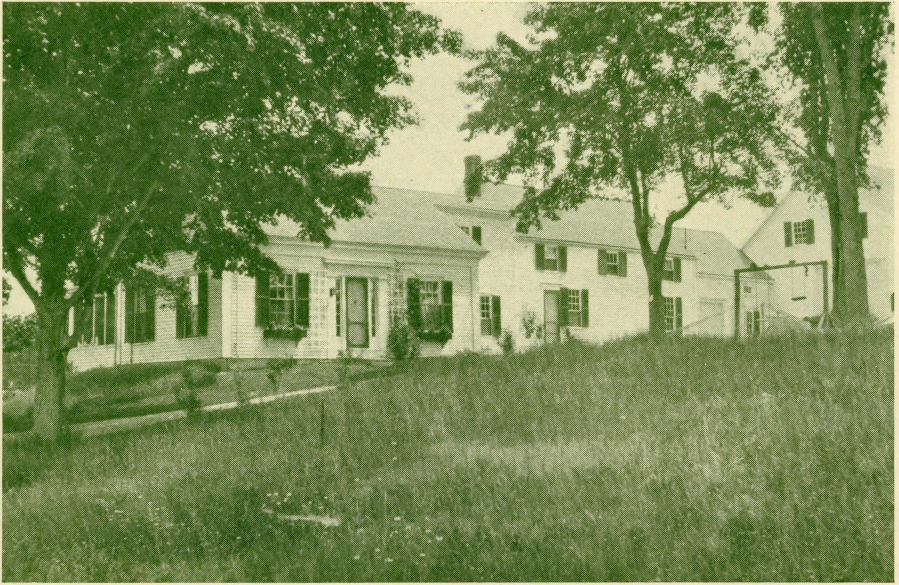
And the country towns themselves are not what they used to be. More and more graduates of colleges live in them. The intellectual life is rich. Usually the newcomer from the city is surprised when he discovers that he need not be dependent at all upon his old city friends for companionship. He finds new friends—and rejoices in his new human wealth.

The radio brings to him the music and talks that it gives to the apartment dwellers. The chances are he has a wider choice of stations. The rural mail man brings the daily papers, magazines and books. There is probably a good public library not far away. Public service also attracts those who have something to give. The newcomer to the country, if he uses sense and does not pretend to know everything, will find that the neighbors will welcome his advice and help.

Maine welcomes purchasers of farms who will not only be self-supporting, but who will contribute to the enrichment of the state as a whole. Such people will find the new joys of the country to be worth far more than they cost. The pure air, the country odors, the sight of apple blossoms in the spring, the glory of autumn foliage, the sting of winter winds, music in the pine trees, gurgling brooks, the song of birds, the quietness of the night, the friendliness of the neighbors, the leisure one comes to know intimately, the satisfactions of coöperating with Nature to grow crops—these are only a few of the delights of the country.



Another Showing of
WHAT CAN BE DONE



A Vice President of the Hudson Motor Company
has his summer home in Maine

On the Top of a Hill

THIS is the story of the Farnsworths who bought an old farmhouse on the top of Sawyer Hill overlooking Goose Pond. They planned to use the property only a few weeks in the spring and fall for fishing and hunting or week-end trips.

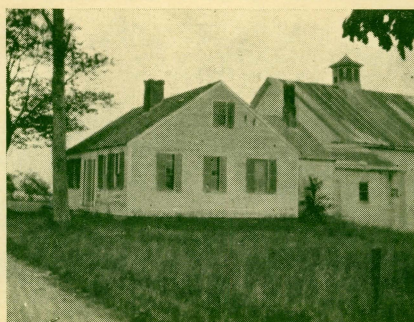
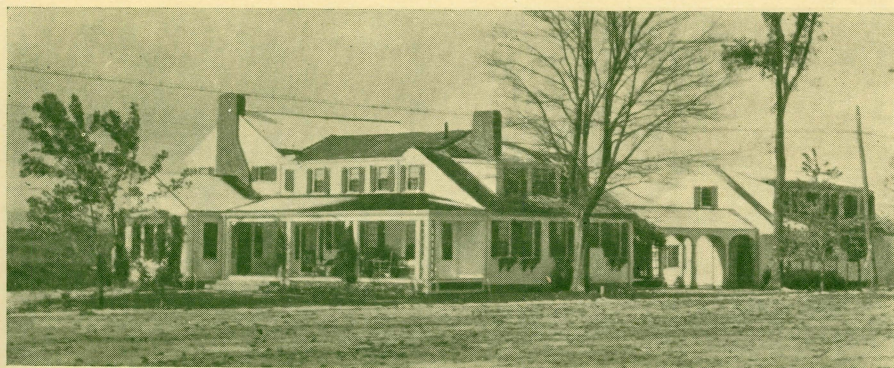
Mrs. Farnsworth remained at the farmhouse steadily all through the first summer, however, and found it hard to tear herself away in October. From May to October she now makes her home there, and when Mr. Farnsworth can retire they are planning to live here permanently.

"Our plans," writes Mrs. Farnsworth, "were at first so simple, but they grew with our enthusiasm until we put in a bath, an artesian well, and finally persuaded the power company to run up lights for us and neighboring farms. We now have every comfort.

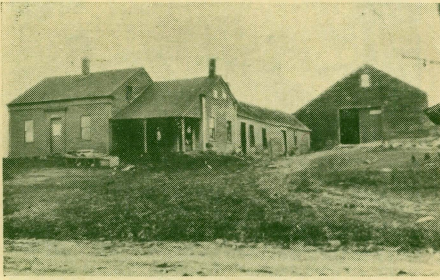
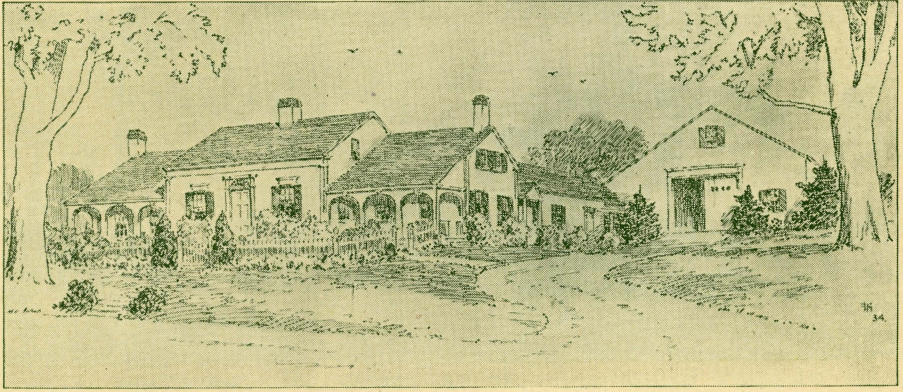
"The reclaiming of this dear little house, built in 1779, and the restoring of it and the grounds, have been my greatest joy and interest through these years."

After a time Mrs. Farnsworth wanted to share her good fortune with people she knew, so, as she writes, "I yielded to the pleas of friends and friends' friends and took paying guests. It was an interesting experience to see these people not only benefit physically from the wonderful air and climate and return to the city robust and rested, but also to watch each one fall under the spell of outdoor charm."

You see, when you buy a farm, you simply enter upon a new adventure.



A Summer Home
among the highlands
of Bridgton, Maine



As the architect sees it
 As the purchaser sees it
 Architecture pays more
 than it costs

While the services of an architect are perhaps desirable, many people prefer to draw their own plans or hire a local contractor or builder to work out plans for alterations as the work progresses.

There are reliable contractors and builders available in or near almost any town in Maine.

The names and addresses of the Architects who furnished the photographs and sketches for the transformations shown in this publication will be sent to interested parties on application.

MAINE DEPARTMENT OF AGRICULTURE
F. P. WASHBURN, COMMISSIONER
AUGUSTA

List of Farms for Sale 1934

ANDROSCOGGIN COUNTY

No. 1. 40 acre farm in the town of Livermore Falls. consisting of 10 acres tillage, 30 acres pasture which is divided into hardwood and lumber. 40 rods from schoolhouse, 3 miles to churches and stores. 5 miles to shipping point, about 30 miles to nearest city. Has a small number of apple trees and other fruit trees. 1½ story house with 5 rooms, roof in good condition. House has cellar with outside entrance, woodshed connected to the house with driveway between shed and barn. Buildings have been constructed for about 50 years, no telephone or running water. Situated on country roads 3 miles from tarvia road. Especially adapted for poultry. Price \$1500.

No. 2. 75 acre farm situated in town of Livermore Falls. 15 acres tillage, 60 acres pasture, cut about 700 cords of hardwood. ¼ mile to school, 2½ miles to church, 4½ miles to shipping point and stores. 30 miles to nearest city. Farm has some apple trees and small fruit. 1½ story, 8 room house, newly shingled, new floors in nearly all rooms. Cellar with outside entrance. Piazza shaded with maple trees. Barn 40 x 40 with tieup for 8 head of cattle and 2 horses. Icehouse, milk-room, henhouse, carriage house and woodshed, all connected. New 2 car garage and storage space overhead. Building constructed in 1848. Has telephone and running water. Farm is situated on town road 2½ miles from state road, especially adapted for hay and general crop. Price \$2500 cash.

No. 3. 180 acre farm located in town of Greene. 60 acres in tillage, 90 acres pasture, 22 acres hardwood. ¾ mile to school, 4 miles to church, shipping point and store. 9 miles to nearest city. 800 apple trees. Brick house 1½ story. Barn wooden frame construction, granite foundation. Several outbuildings and silo. Built about 80 years ago. Has running water. No telephone or electricity. Farm located on country road especially adapted for orcharding. Price \$6,000. Terms \$1,000 down, balance on mortgage.

No. 4. 95 acre farm in town of Webster. 35 acres tillage, 55 pasture. 1 mile to school, church, shipping point and stores. 6 miles to nearest city. Wooden frame house 1½ story in good repair. Large wooden barn in good repair. Several outbuildings and garage. Farm equipped with telephone, electricity and running water. Located on good road. Especially adapted for dairying. Price \$2500. Terms \$500 down, balance on mortgage.

No. 5. 2 acre farm, practically all tillage located in Turner, Maine, on Bear Pond Road. ¼ mile to school, church and shipping point, also stores. 16 miles to nearest city. 6 room house, 2 of extra good size, 3 bedrooms downstairs. House needs papering and shingling. Upstairs unfinished. Place built about 200 years ago. Electricity available. Located on dirt road. Farm especially adapted for strawberry growing. Price \$1400. Cash \$700, rest on terms.

No. 6. 60 acre farm in town of Wales, 20 acres in tillage, 40 acres pasture. Few minutes walk to school and church. 2 miles to shipping point and stores. Few apple trees and berries. No buildings. Electricity and telephone available. Property is situated on State Aid road. Adapted for general farming. \$400.00 cash.

No. 7. 60 acre farm located on Page's Mill to Poland Corner Road. 18 acres in tillage, 15 in pasture and 26 acres in lumber. 2 miles to school, churches, shipping point and stores. Few apple trees and some small fruit. 6 room Cape Cod type house, nice pantry, good cellar, woodshed connected with barn from small ell used as laundry room. Woodshed is 24 x 30. Barn 34 x 40. Tieup for 9 head cattle, 3 horses. Nice barn cellar, icehouse, henhouse, brooder house. Building about 100 years old. Telephone, electricity available. Property on State Aid road and farm is especially adapted for poultry raising and small fruit. Price \$3,100. Terms to be arranged.

No. 8. 35 acre farm located in Leeds, 13 acres in tillage, 22 acres pasture and woodlot. 1 mile to school, church, shipping point and stores. 300 apple trees. Good strawberry bed, also raspberry bed. Garage, 6 good henhouses, outside of the main buildings. Telephone, electricity all situated 50 rods off the State road. Especially adapted for general farming. Price \$2300, part cash. Includes an assortment of tools.

No. 9. 60 acre farm located at Webster Corner, 20 acres tillage, 5 acres pasture, 5 acres hardwood and 30 acres lumber. ¼ mile to school, 2 miles to church, shipping point and stores. Few fruit trees. 2½ story house and ell. Shed and garage. House connected with barn 40 x 50. Buildings need some shingles. House has 10 pleasant rooms, 2 bathrooms, 2 halls with handsome landscape paintings painted on the plastering of the walls, all hand finished, fine condition inside. Building built in 1825. Property is located on 3rd class road. Place adapted for potatoes and general crop. Price \$10,000.

No. 10. 150 acre farm in North Turner. 55 acres tillage, 65 acres pasture, 30 acres hardwood and lumber. ¼ mile to school, churches and stores. 6 miles to shipping point. 150 apple trees. 1½ story 11 room house, 2 fireplaces, 2 hardwood floors, china closet. Woodshed, carriage house, garage. Barn 36 x 72, sheds, henhouse, grainery, open icehouse. Cellar under barn, hayfork. Telephone, electricity available. Running water to house and barn. Especially adapted for all kinds of crop, hay farm. Price \$4,000, including machinery. Terms \$2,000 down, rest mortgage.

No. 11. 120 acre farm in Auburn. 60 acres tillage, 40 acres pasture. 1 mile to school, churches and stores. Few fruit trees. 1½ story house, good cellar, furnace. Connected to barn by woodshed. Fine silo. Tieup for 18 head cattle and 20 sheep, 2 horses. Telephone, running water. Electricity available. Especially adapted for all crops. Price \$4,500. Terms.

AROOSTOOK COUNTY

No. 12. 153 acre farm located in Houlton. 84 acres in tillage, 10 in pasture, 63 acres lumber. 3 miles to school, churches, stores and nearest city. $\frac{1}{2}$ mile to shipping point. 1 mile to lake and 40 rods to river. $\frac{1}{4}$ acre strawberries. Main house 20 x 26, ell 16 x 22, shed 14 x 20, 2 piazzas, barn 40 x 80 and shed for storing machinery. Lightning rods on all buildings. Telephone, running water and electricity. Property located on tarvia road. Especially adapted for potato raising. Price \$15,000.

CUMBERLAND COUNTY

No. 13. 45 acre farm located in South Bridgton. 20 acres in tillage, 25 in pasture, hardwood and timber. 1 mile to school, churches and stores. 6 miles to shipping point. 14 room house, all in good condition, downstairs finished mostly in whitewood, the rest in natural finish except pantry which is painted. Barn, woodshed, carriage house, work shop, henhouse and icehouse. Telephone and running water. Electricity available. Property located on dirt road. Especially adapted for dairying and general crops. Price \$4,000.

No. 14. 75 acre farm in town of Casco. 25 acres in tillage, 20 acres pasture, 15 acres hardwood, 15 acres lumber. 1 mile from school, churches, stores and lake. 50 apple trees, few pear trees. 1 $\frac{1}{2}$ story house, barn 40 x 60. Water is pumped at sink. Property on country road. Especially adapted for all kinds of vegetables and grain. Price \$1,500. Terms, a deposit down and balance to suit customers.

No. 15. 50 acre farm on State Road Route 114 from Westbrook to Naples. 30 acres in tillage, 20 acres in pasture. 50 rods to school and churches. 3 miles to shipping point. $\frac{1}{2}$ mile to stores and 8 miles to nearest city. 2 miles to Sebago Lake. Few apple, pear and plum trees. House and ell with good 8' basement. Running water and electricity. Telephone available. Property on black road. Price \$3,500.

No. 16. 175 acre farm in town of Buxton. 90 acres in tillage, 50 acres pasture, 35 in lumber. $\frac{1}{2}$ mile to school, churches and stores. 2 miles to shipping point. Brook borders field, 3 $\frac{1}{2}$ miles to Saco River. Few apple, pear and plum trees. 11 room brick house, cement cellar in good condition. Telephone available. Running water in house and barn, electricity. Property on good dirt road, 1 mile from State road. Especially adapted for dairying. Price \$7,000. Terms.

No. 17. 65 acre farm located on Cundys Harbor road at Oakledge road. 12 acres tillage, 36 acres pasture, 7 acres hardwood, 10 acres lumber. $\frac{1}{2}$ mile to school, churches, 1 mile to stores and 7 miles to shipping point. 15 miles from Bath, nearest city. Property is about 800 feet from salt water, $\frac{1}{2}$ mile to shore frontage. 48 apple trees, a few pear, plum and cherry. House of 6 rooms with open attic. Shed attached and cellar in excellent condition. Barn 40 x 40, tieup for 6 head cattle and 2 horses, fair condition. Henhouse 12 x 20 in good condition. Other buildings 12 x 12 used for storage or icehouse. Buildings have been built for about 100 years. Especially adapted for summer home or general farming. Price \$1500. $\frac{1}{2}$ cash, balance in rent.

No. 18. 117 acre farm in North Pownal. 67 acres tillage, 50 acres pasture. $\frac{1}{2}$ mile to school, churches and stores. 4 miles to shipping point. Farm borders middle branch Royal River. Few apple trees and small fruits. 1 $\frac{1}{2}$ story house with ell. Barn 40 x 60 clapboarded and painted, room for 18 head of stock. House and barn connected by 70' shed, room for wood and 2 cars. Hoghouse, brooder house and henhouse for 200 hens. Telephone. Electricity available. 1 well 123' deep

and 1 well 23'. Property on third class road. Especially adapted for dairying or diversified farming. Some farming tools, hayrack, dumpcart, sulky plow, harrow, etc. These buildings equipped with lightning rods. Price \$4,000.

No. 19. 175 acre farm located on State Aid road, Durham from Auburn to Freeport. 50 acres in tillage, rest in pasture and woodland. 1 mile from school, 5 miles to shipping point and stores and churches. 1 $\frac{1}{2}$ story house, woodshed, barn 42 x 40. Several wells on place and a good spring nearby from which water could be brought into buildings. Property located on gravel road. Especially adapted for dairying and general farming. Price \$3,500 cash, terms \$4,000. Will divide property if desired and sell half or part with terms accordingly.

No. 20. 72 acre farm located in Freeport on Wolf's Neck road. 30 acres tillage, remainder in pasture and hardwood. $\frac{1}{2}$ mile to school, 2 miles to churches, shipping point and stores. Few apple, plum, crabapple trees for home use. 1 $\frac{1}{2}$ story house brick foundation, large barn, henhouse, garage. Cellar under whole house. Good well of water. Pasture well watered. Telephone. Property $\frac{1}{2}$ mile from State Aid road. Especially adapted for dairying and strawberries. Price \$1,300.

No. 21. 40 acre farm located in Gorham on gravel road. 20 acres tillage, 10 acres hardwood, 10 acres lumber. $\frac{1}{2}$ mile to grade school, 3 miles to Gorham Normal, 2 miles to churches, shipping point and stores. About 200 apple trees. No buildings on farm. Especially adapted for orcharding and small fruit. Price \$2,800, reasonable terms could be arranged.

No. 22. 110 acre farm in Bridgton on Ingalls Hill. 50 acres in tillage, remainder in pasture and hardwood. 5 miles to school, churches, shipping point and stores. Small orchard. 10 room house, ell, stable, large barn, icehouse, shop, henhouse, bath room. Buildings in good repair. 2 piazzas, a well near house. House supplied with spring water, pumped by gasoline engine. House built in 1901. Telephone, running water. Electricity 1 mile distant. Property on dirt road. Especially adapted for Sanatorium, Home for Aged or School. Price \$12,000.

No. 23. 25 acre farm located in Westbrook. 13 acres tillage, 12 acres pasture. 1 mile to school, churches and stores. 3 miles to shipping point. 10 room brick house with granite finish, a wooden ell consisting of 2 car garage, workshop, shed and large attic. A nice stable, greenhouse, also henhouses. Shade trees on front and side. Plants and fruits sold at door. House built 75 years ago. Telephone, electricity, running water. Property on Theodore Roosevelt Trail. Especially adapted for tourist home. Price \$11,000, one-half cash.

No. 24. 160 acre farm located 4 miles from Harrison village. About 35 acres in tillage and remainder in pasture and hardwood. $\frac{1}{2}$ mile to school, churches, and stores. 2 miles to lake. 100 apple trees, 2 acres raspberries, all kinds of small fruits. 10 room house, water, electric lights, lightning rods, new barn, new stable, new sheds and new garage. 100 ft. henhouse and another big henhouse for 500 hens, broad piazzas and glassed in porch, icehouse, tool houses, all in good repair. Built in 1924 and 1926. Telephone, electricity, running water. Property on dirt road, $\frac{1}{2}$ mile to black road. Especially adapted for small fruits and hens. Price \$7,000, terms part cash.

No. 25. 145 acre farm located in North Bridgton. 40 acres in tillage, 105 acres pasture. $\frac{1}{2}$ mile to school, churches, and stores. 2 $\frac{1}{2}$ miles to shipping point. $\frac{1}{2}$ mile to Long Lake. Natural trout brook on farm. 2 story house and ell, screened in piazza, fireplace in living and dining rooms, house heated with furnace, running water

in house and barn. Bathroom, telephone and electric lights. Barn 40 x 64 with basement, carriage house, woodshed, toolhouse, icehouse, garage, all in extra good repair and recently painted. Property located on gravel road $\frac{1}{2}$ mile to black road. Especially adapted for potatoes and general crops. 20 registered jerseys, 2 horses, hogs, hens and tools, 25 cords stove and furnace wood. Price upon request.

No. 26. 115 acre farm located in Gorham. 50 acres tillage, 65 acres in hardwood and pasture. 2 miles to school, churches and stores. 5 miles to Sebago Lake. Few apple, cherry and pear trees. $1\frac{1}{2}$ story house with ell. Cellar under house and ell. Long shed from ell to barn. Shed has 2 floors, lower and upper for storage or other purposes. Barn 40 x 60 with 2 sheds on the barn. Electricity. Telephone available. Well water in front of house. Especially adapted for general farming. Price \$8,500. Terms. Price includes all kinds of machinery, plows, harrows, cultivators, hoes, forks, mowing machine, horse rake.

No. 27. 53 acre farm located on Route 123 out of Brunswick in Harpswell. 30 acres in tillage, 15 acres pasture, 8 acres hardwood and lumber. 1 mile to school, churches and stores. 7 miles to shipping point. Few apple, pear, cherry and plum trees. 10 room house, carriage shed, henhouse and barn that will hold 50 tons of hay all combined, with garage and workshop across the yard from barn. Buildings in good condition. Telephone. Electricity available. Property located on State road. Especially adapted for small fruits, poultry and general farming. Price \$2,650. Terms \$900 cash, balance mortgage.

No. 28. 110 acre farm located in West Gray. 25 acres in tillage, 30 acres pasture, 55 acres hardwood and lumber. 1 mile to school, 2 miles to stores, 5 miles to churches and shipping point. 1 mile from Little Sebago. 150 apple trees. 20 peach, pear and plum trees. $1\frac{1}{2}$ story house, 9 rooms. Long ell attached to house. Barn and garage 60 x 60, 2 henhouses. Built in 1860. Telephone and running water. Property on dirt road. Especially adapted for orcharding and general garden crops. Price \$3,200. Terms \$1,700 cash, \$1,500 in Land Bank mortgage.

FRANKLIN COUNTY

No. 29. 40 acre farm located 5 miles east of Wilton R. R. Station in Chesterville. 20 acres tillage, 20 acres pasture. $1\frac{1}{2}$ mile from school, churches and stores. $5\frac{1}{2}$ miles to shipping point. $\frac{1}{2}$ mile to 2 small lakes. 100 apple trees, some small fruit. Buildings in good livable condition, need some minor repairs. Built 30 years ago. Telephone available. 2 wells. Property on dirt road, $1\frac{1}{2}$ mile to improved road. Especially adapted for crops and hay. Price \$1,000. Terms.

No. 30. 15 acre farm in North Chesterville. 9 acres tillage, 6 acres pasture. Few rods from school, churches and stores. 7 miles to shipping point. Lake $\frac{1}{2}$ mile, river 20 rods. 10 room house, electric lights, woodshed. Garage, workshop and blacksmith shop and stable. Located on State road. Especially adapted for small fruits and hens. Price \$1,800.

No. 31. 70 acre farm located in Farmington. 30 acres tillage, remainder in pasture and hardwood. $2\frac{1}{2}$ miles to churches, stores and shipping point. Children conveyed to village school. $1\frac{1}{2}$ story house with ell. Barn separate from house. 2 good wells. Electricity available. Telephone available. Property on dirt road $\frac{1}{2}$ mile from State road. Price \$1,500.

No. 32. 60 acre farm in West Farmington. 30 acres in tillage, 30 acres pasture. 1 mile to school, church, shipping point and stores. Part of land borders Temple Mills Stream. Few apple trees. House 20 x 24, ell 16 x 30, all newly shingled. Shed 20 x 24. Barn 44 x 60. Tieup

for 12 cows, box stall for 2 horses. Telephone available. Running water in both house and barn. Property on improved gravel road. Especially adapted for dairying and general farming. Price \$2,000. Terms $\frac{1}{2}$ cash, balance mortgage.

No. 33. 160 acre farm in New Vineyard. 40 acres tillage, 100 acres pasture, 20 acres lumber. Sugar orchard of 500 trees. 2 miles to school. 3 miles, churches, stores, shipping point. $\frac{1}{2}$ mile to lake. 200 apple trees. 50 pears, plums, cherries. 12 room house, with hardwood floors in living rooms, furnace heat. 60 ft. barn, carriage house and icehouse. Telephone, running water. Electricity available. Property on dirt road. Especially adapted for general farming and dairying. 10 cows, 7 heifers, pair of horses, flock of sheep, hens. Price \$2,500. Terms to be arranged.

No. 34. 300 acre farm located near Phillips Village. 75 acres tillage, remainder in pasture, hardwood and lumber. 2 miles to school, churches, shipping point and stores. 100 apple trees, few pear, plum trees. $\frac{1}{2}$ acre raspberries. House with ell and shed. Barn 40 x 50 with extra tieup in lean-to. Telephone and running water. Especially adapted for dairying or orcharding. Price upon request.

No. 35. 160 acre farm in Phillips. 50 acres tillage, 50 pasture and 60 lumber. $\frac{1}{2}$ mile to school and churches. $2\frac{1}{2}$ miles to stores. 150 apple trees. 2 story house, hot and cold water, bathroom, set tubs. Telephone. Brook watered pasture. Price \$2,500. Barn, stable and garage.

No. 36. 40 acre farm 2 miles from New Sharon on Vienna road. 15 acres tillage, 5 pasture, 20 hardwood. 2 miles to school, churches and stores. $2\frac{1}{2}$ miles to Bents Pond. Few apple, plum and cherry trees. 7 room house, shed 16 x 25, barn 35 x 45 with manure shed. Buildings in fair condition. Especially adapted for poultry, small fruit or gardening. Price \$800 cash. Terms \$1,000, half cash, balance on easy terms. Price includes 2 cows, 12 hens, some small tools and furniture. Also fitted wood.

No. 37. 85 acre farm located on Weld road in Wilton. 30 acres tillage, 30 acres pasture, 15 acres hardwood, 10 acres lumber. $\frac{1}{2}$ mile to school, 2 miles to churches, shipping point and stores. $\frac{1}{2}$ mile to Wilson Lake. 300 apple trees, few plum and pear trees. 10 room $1\frac{1}{2}$ story house, 35 ft. ell, shed and garage. Cellar under house. Barn 36 x 40 across the road from house. Excellent well of water. Telephone and electricity. Especially adapted for general farming. Price \$3,500. Terms \$2,500 cash, balance first mortgage.

No. 38. 159 acre farm located in Salem. 75 acres tillage, 84 acres pasture. 1 mile to school, churches and stores. $\frac{1}{2}$ mile to shipping point. Few apple trees. Plenty of wild blueberries. 7 room house with nice basement. Shed, barn, garage, henhouse. Pump in kitchen. Telephone available. Property located on 2nd class road. $\frac{1}{2}$ mile to State road. Especially adapted for potatoes and vegetables. Price \$1,000. Terms, $\frac{1}{2}$ cash.

No. 39. 100 acre farm about 3 miles from Phillips village on the Salem road. 30 acres pasture, 30 acres tillage, 20 acres hardwood, 20 acres lumber. $1\frac{1}{2}$ mile to school, 3 miles to churches, shipping point and stores. 5 room house, shed and barn. Buildings repaired and built over last fall. Running water in house and barn. Telephone available. Property located on gravel road. Especially adapted for general farming. Price \$1,200. Terms, $\frac{1}{2}$ cash.

No. 40. 60 acre farm about 3 miles from Phillips village on the Salem road. 20 acres tillage, 10 acres pasture, 10 acres hardwood, 20 acres lumber. $1\frac{1}{2}$ mile to school, 3 miles to

churches, shipping point and stores. Few apple trees. House, barn with a shed on each end, one for a flock of 28 sheep and one for hogs. Telephone available. Well water. Property located on gravel road. Especially adapted for cattle, sheep, orcharding and general farming. Price \$500. Terms, $\frac{1}{2}$ cash and bond or deed.

No. 41. 120 acre farm located in New Sharon. 25 acres tillage, 10 acres pasture and remainder in hardwood and lumber. 1 mile to school, churches and stores. 8 miles to shipping point. Bungalow type new house with 5 rooms and attic, hardwood floors, bath. Barn and stable in good repair. Built in 1920. Telephone, electricity and running water. Property located on tarred road. Especially adapted for general farming or tourist home. Price \$2,500.

No. 42. 42 acre farm located in New Sharon. 10 acres tillage, 7 acres pasture, 25 acres wood and lumber. $1\frac{1}{2}$ mile to churches and stores. Scholars transported to village school. Clearwater Lake $1\frac{1}{2}$ mile. Trout stream borders woods. Few apple, plum and pear trees. $1\frac{1}{2}$ story house, barn, stable, ice and henhouses, wood and icehouse. Telephone available. Pump in house and stable. Property on dirt road, $1\frac{1}{2}$ mile to gravel road. Price \$1,200. Terms to suit purchaser.

No. 43. 110 acre farm in Jay. 25 acres in tillage, 85 acres pasture. 2 miles to school, churches, shipping point and stores. 350 apple trees. Few pear and plum trees. 7 room house, barn 38 x 40, 2 henhouses, good shed between house and barn. Icehouse, toolhouse and garage. Farming tools included. Good well water. Property located on gravel road, State Aid road nearby. Price \$2,500.

No. 44. 80 acre farm located in Chester-ville. 20 acres tillage, 15 acres pasture, remainder in hardwood and lumber. 1 mile to school, churches and stores. Few apple trees. House and ell, 7 rooms. Shed and garage connected. Telephone available. Running water in sink. Property located on dirt road. Especially adapted for general farming. Price \$1,000.

No. 45. 4 acre farm located in Chester-ville. $\frac{1}{2}$ mile to school, churches and stores. 5 miles to shipping point. House, shed and stable connected. In good repair but need painting. Telephone available. Electricity. Running water in sink. Property located 100 feet from State road. Especially adapted for poultry raising. Price \$1,800.

No. 46. 98 acre farm located on Route 2 between Farmington and Farmington Falls. 50 acres tillage, 48 acres pasture. 1 mile to school, churches and stores. 4 miles to shipping point. Near lakes and ponds. Few apple, pear and plum trees. 8 room house, woodshed, carriage house and garage, barn 40 x 50 with tieup for 13 cows, also place for 2 horses. Buildings all cointed and painted white with green blinds. Telephone and electricity. Property on newly built tarvia surface road. Especially adapted for dairying and sweet corn. Price \$3,500. Terms, $\frac{1}{2}$ down, balance easy terms.

No. 47. 200 acre farm in New Sharon. 60 acres tillage, 60 acres pasture and 80 acres hardwood and lumber. $\frac{1}{2}$ mile to school, churches and stores. 40 rods to river, 2 rods to stream on farm. 8 room house, woodshed connected. Barn 35 x 68 with tieup for 22 head. Barn 30 x 40 with tieup for 10 head. Barn 26 x 30 ties 5 horses. Telephone available. Electricity, city water and piped spring. Property on gravel road. Especially adapted for dairying, stock raising or poultry. Price \$4,000. Terms. Price includes stock and some tools.

No. 48. 50 acre farm $\frac{1}{2}$ mile north of New Vineyard village. 12 acres tillage, 8 acres pasture, 30 acres lumber. $\frac{1}{2}$ mile to school, churches and stores. $1\frac{1}{2}$ mile to Potter Lake. $1\frac{1}{2}$ story house with barn attached. Excellent cellar under house. Workshop and barn 50 rods from house. Electricity available. Pump in house. Especially adapted for general farming, good potato land. Price \$1,500.

No. 49. 10 acre farm located in Farmington. 8 acres tillage, 2 acres pasture. $\frac{1}{2}$ mile to school, churches and stores. Borders Lemon Stream. House has 4 rooms downstairs and is unfinished upstairs. Barn. Especially adapted for poultry or roadside business. Price \$700. Terms \$200 down, balance easy terms.

No. 50. 185 acre farm 3 miles from Farmington village. 30 acres tillage, 75 acres pasture, 25 acres hardwood, 50 acres lumber. 3 miles to school, churches, shipping point and stores. 200 apple trees. Few pears and plums. 11 room house, finished from cellar to garret. Barn for 20 head cattle, 4 horses, with basement and silo. Henhouse 16 x 30, garage, toolhouse. Telephone and running water. $1\frac{1}{2}$ mile from black road. Especially adapted for corn, potatoes and early gardening. Price \$4,500. Terms half down, rest easy terms.

No. 51. 100 acre farm in Strong. 20 acres tillage, 20 acres pasture, 30 acres hardwood and lumber. $2\frac{1}{2}$ miles from school, churches, shipping point and stores. Borders on Porter Lake. 200 apple trees. 8 room house, 72 foot main barn, stable about 30 x 35, henhouse for 100 hens, icehouse and creamery, also granary. Telephone and electricity available. Well water in house, barn and stable. Property located on State road. Especially adapted for general farming and summer home. Price \$3,500. Terms to be arranged.

No. 52. 180 acre farm $1\frac{1}{2}$ mile from Weld village on State road to Wilton. 20 acres tillage, 140 acres pasture. Remainder in hardwood and lumber. $1\frac{1}{2}$ mile to school, churches and stores. 2 miles to Lake Webb. Camp with lean-to on side. Telephone and light lines pass by camp. Spring water. Price \$2,000. Terms \$1,000 down, balance easy payments.

No. 53. 2 acre farm located in Weld. School, churches and stores nearby. $2\frac{1}{2}$ story house with 14 rooms. Barn 38 x 40, used for livery, also garage, large hog and henhouses. Telephone, electricity and running water. Property located on gravel road. Especially adapted for summer boarders. Price \$3,000. Terms, \$1,500 down, \$200 yearly.

No. 54. 80 acre farm 1 mile from Weld village on Wilton road. 25 acres tillage and remainder in pasture, hardwood and lumber. 1 mile to school, churches and stores. $1\frac{1}{2}$ mile to lake. Few apple trees and all kinds of berries. Buildings burned, but lumber ready to cut for buildings. Sawmill about $\frac{1}{2}$ mile. This is an ideal poultry and dairy farm. Well water. Price \$1,200. Terms, \$600 down, \$100 yearly payments.

No. 55. 2 acre farm located in Phillips. School, churches and stores nearby. 6 room, 2 story house, ell (kitchen and nice room above), hardwood cupboards. Electric lights and city water, also well with pump. Large woodshed, large stable with underneath cellar for pigs and 250 hens. Garage across the road from stable. Telephone. Property on gravel road, short distance to state road. Price \$2,000.

No. 56. $1\frac{1}{2}$ acre lot on Lower Main Street. Farmington. Modern bungalow with garage. Hot air furnace, electric lights. 7 rooms with bathroom, 3 closets, built-in cupboards, hardwood floors. Piazza front and back. Shed 10 x 16. Built in 1926. Telephone, city water. Price \$4,500.

No. 57. 120 acre farm on main road from West Farmington to Temple. 1 mile from school, churches, shipping point and stores. 30 acres tillage, 45 acres pasture, 10 acres hardwood, 35 acres lumber. House and ell, piazza, large woodshed, carriage house, ice room, large barn with basement under it, also henhouse. Telephone, electricity and running water. Especially adapted for corn, potatoes and hay. Price \$3,000. Terms \$1,500 down.

No. 58. 175 acre farm in Chesterville. 50 acres tillage, 125 acres pasture. 1 mile to school, 3 miles to churches and stores, 11 miles to shipping point. Few fruit trees. 9 room house, shed and garage connected to kitchen. Barn. Running water in barn, pump in house. Property on dirt road. Especially adapted for summer home or general farming. Price \$3,000. Terms \$500 down, balance easy terms.

HANCOCK COUNTY

No. 59. 3 acre farm located in Stonington. 1 mile to school, churches, stores, shipping point. Situated on Deer Island. 9 room house, large barn and poultry house. Built in 1895. Telephone and electricity. Cistern. Especially adapted for poultry or truck gardening. Price \$1,500.

No. 60. 150 acre farm located in Bucksport. 40 acres tillage, 60 acres pasture. $\frac{1}{2}$ mile to school, 1 mile to church, 3 miles to stores. 2 miles to Lake Alamosook. Few apple trees. 10 room modern house. Large stock barn with 2 large sheds attached and will accommodate 20 head cattle, 4 horses, large hay mows and has water piped in. Barn No. 2 for hay storages, farming tools, etc. Also henhouse and other smaller buildings. Water piped in house and barn from separate wells. Telephone and electricity available. Property on State road. Especially adapted for potatoes, grain, garden, truck, apples and dairying. Price \$4,000.

No. 61. 30 acres wooded land between Castine and Penobscot. An old building could be fixed up for cottage, the land is wooded and could be cut up into many cottage lots or suitable for school, land locked harbor about 6 miles from Castine is about $\frac{1}{2}$ mile from State road 175. Price \$2,500. Terms, $\frac{1}{2}$ cash.

KENNEBEC COUNTY

No. 62. 50 acre farm on Fayette road from Livermore Falls to Augusta. 15 acres in tillage, rest in pasture and wood. $\frac{1}{2}$ mile to school, churches and stores. 6 miles to shipping point. $\frac{1}{2}$ mile of farm borders on lake. 50 to 100 apple trees. 1 $\frac{1}{2}$ story, 9 room house, cellar with furnace, fireplace, maple shade trees in front of house. Mail at door. Lightning rods. Stable 25 x 50, basement, tieup. 1 henhouse 16 x 24, icehouse and woodshed. All buildings connected except one henhouse. Telephone connected. Pump in sink. Property on State Aid road. Especially adapted for poultry raising. Price \$1,500. Terms, \$500 down, balance on easy payments.

No. 63. 240 acre farm in Monmouth. 105 acres tillage, 40 acres pasture, 40 acres hardwood. 200 feet to school, 1 mile to churches. 3 miles to shipping point and stores. Land borders on Lake Cobbosseecontee. House of 1 $\frac{1}{2}$ story wooden frame construction, foundation of stone, brick and concrete, barn of wooden frame construction, stone foundation. Other outbuildings including garage and henhouses. Telephone available. Running water. Especially adapted for general farming. Price \$3,000. Terms \$1,000 down and balance on long term mortgage.

No. 64. 50 acre farm in Farmingdale. 20 acres tillage, 30 acres pasture. $\frac{1}{2}$ mile to school and churches. $\frac{4}{5}$ miles to shipping point, stores and nearest city. 2 story house, large barn in fair

condition. Built in 1903. Especially adapted for general farming. Price \$1,900. Terms, \$500 down and balance on mortgage.

No. 65. 200 acre farm in Albion. 100 acres tillage, 60 pasture, 40 hardwood. 1 mile from school and churches. 4 miles to shipping point and stores. 50 apple trees. House of wooden frame construction 1 $\frac{1}{2}$ story, split stone foundation, large barn and several outbuildings. Telephone, electricity and running water. Especially adapted for dairying, corn and potatoes. Price \$5,500. Terms, \$1,000 down and balance on mortgage.

No. 66. 90 acre farm located in Winthrop. 40 acres tillage, 30 acres pasture, 20 acres hardwood. $\frac{1}{2}$ mile to school, churches, shipping point and stores. Property borders 2 lakes. 40 apple trees. Large wooden frame house and barn in good repair. Telephone, electricity and running water. Especially adapted for summer boarders. Price \$4,500. Terms, \$1,000 down and balance on mortgage.

No. 67. 148 acre farm in Wayne. 30 acres tillage, 40 acres pasture, 78 acres hardwood and timber. $\frac{1}{2}$ mile from school, churches. 4 miles to shipping point, $2\frac{1}{2}$ miles to stores. 1 $\frac{1}{2}$ story house of wooden frame construction. Large barn wooden construction, several outbuildings. Buildings in good repair. Running water. Property on good road, short distance from State Highway. Especially adapted for general farming, potatoes, and stock raising. Price \$3,500. Terms, \$1,000 down and balance on mortgage.

No. 68. 180 acre farm in Farmingdale. 70 acres tillage. 110 acres pasture and wood. $\frac{1}{2}$ mile to school. 3 miles to churches. 5 miles to shipping point and stores. Property borders on pond. Large 2 family house recently repaired and large barn recently shingled. Especially adapted for general farming and stock raising. Price \$6,000. Terms, \$1,000 down and balance on mortgage.

No. 69. 94 acre farm located in East Pittston. 55 acres tillage, 36 acres pasture. $\frac{1}{2}$ mile to school, churches and stores. 40 apple trees. 1 $\frac{1}{2}$ story house wooden construction in good repair. Large barn recently repaired. Telephone and electricity. Especially adapted for general farming. Price \$1,800. Terms, \$500 and balance on mortgage.

No. 70. 250 acre farm located in Vassalboro. 125 acres tillage, 75 acres pasture, 30 acres hardwood, 20 acres lumber. $\frac{3}{4}$ mile to school, churches and stores. $1\frac{1}{2}$ mile to Webber Pond. 300 apple trees. A few plum trees. 2 sets of buildings in fair condition. Telephone, electricity and running water. Property on tarvia road. Especially adapted for hay raising, and potato raising. Price includes 3 cows, 3 horses and tools. Price \$8,000. Terms, part cash.

No. 71. 65 acre farm in Windsorville. $\frac{1}{2}$ in tillage and $\frac{1}{2}$ pasture. Short distance from school, churches, shipping point and stores. Few apple and plum trees. 1 $\frac{1}{2}$ story house, large barn, small henhouse, 2 good wells. Especially adapted for poultry raising. Price \$500.

No. 72. 65 acre farm in town of Windsor on dirt road, $\frac{1}{2}$ mile from State road. 1 mile to school, 2 miles from stores. Eastern boundary on Long Pond. Apple orchard and other fruit trees. Berries of all kinds. 6 room house. Barn 20 x 30. Telephone available. 2 wells near house and barn, also spring in pasture. Rural delivery. Adapted for poultry and small fruit. Good hunting and fishing. Price \$850.

No. 73. 125 acre farm located in West Gardiner. $\frac{1}{2}$ mile to school. $1\frac{1}{2}$ mile to stores. 4 miles to churches and shipping point. 3 miles from Cobbosseecontee Lake. 100 apple trees.

7 room house all connected with other buildings. 2 never failing springs. Telephone and electricity available. Property on State road. Especially adapted for poultry raising. Price \$2,400. Terms, \$2,000 cash, balance mortgage.

No. 74. 65 acre farm located on Quaker Road in Sidney. 30 acres tillage, 15 pasture, 15 hardwood, 5 lumber. $\frac{1}{4}$ mile to churches. $\frac{2}{3}$ miles to school and stores. 6 miles to shipping point. Few apple, pear and plum trees. 6 room house. New henhouse. Large barn. 2 never failing wells. Especially adapted for market gardening, extra early land. Price \$800. Terms, at least $\frac{1}{2}$ cash.

No. 75. 85 acre farm 2 miles from Water Street, Hallowell. 50 acres tillage, rest in wood and pasture. 2 miles to school, churches, shipping point and stores. 2 miles to Lake Cobbosseecontee. Few fruit trees. Colonial house, shed, workshop, garage, woodshed, carriage house, stable, large barn. Telephone, electricity. Spring water piped to barn. Well in shed. Property on first class road. Especially adapted for general farming. Price \$4,500.

No. 76. 30 acre farm in West Gardiner 18 acres tillage, remainder in pasture, hardwood and lumber. 1 mile to school, churches, stores. Land borders Cobbossee Stream. Few apple, plum and pear trees. 2 story 11 room house, running hot and cold water, bath, furnace heat, cellar under whole house. Piazza. Barn 52 x 40 connected to house. Henhouse for 500 birds. Telephone and electricity. Property on black road Route 126. Especially adapted for general farming. \$3,500. Terms to be arranged.

No. 77. 130 acre farm on Riverside Drive, Augusta. 110 acres tillage, 20 acres pasture. $\frac{1}{2}$ mile to school, $\frac{1}{2}$ mile to shipping point, 2 miles to churches. Small store next door. Few apple and plum trees, blackberry bushes. 13 room Colonial style house. Barn newly shingled. Telephone, running water, electricity. 3 door garage, henhouse and icehouse. Especially adapted for dairying. Price \$10,000. Terms, $\frac{1}{2}$ down.

No. 78. 65 acre farm in Litchfield. 12 acres tillage, 15 acres pasture, 10 acres hardwood. $\frac{3}{4}$ mile to school, churches and stores. $7\frac{1}{2}$ miles to shipping point. $\frac{1}{2}$ mile to Tacoma Lake. Few apple and pear trees. Also strawberry plants. 2 story house. Henhouse 16 x 32, small brooder house and small barn. Property on dirt road $\frac{1}{2}$ mile to State road. Price \$1,200. Price includes 4 cows, 1 heifer, 1 horse and farming tools.

No. 79. 70 acre farm in Readfield. 35 acres tillage, 10 acres pasture, 10 acres hardwood, 15 acres lumber. $\frac{1}{2}$ mile to school, churches and stores. Shipping point $2\frac{1}{2}$ mi. Borders on lake. Few apple, pear and plum trees. Also strawberry, raspberry and blackberry bushes. $1\frac{1}{2}$ story house. Good hay barn 27 x 38. Henhouses. Telephone. Located on gravel road just off State road. Especially adapted for general farming and poultry raising. Price \$2,400. Terms, \$1,500 down. Price includes 3 or 4 head of cattle and about 35 hens, hay and wood.

No. 80. 65 acre farm located at Dennis Hill in Litchfield on Route 126. 20 acres tillage, 25 acres pasture and remainder in mixed wood. 1 mile to school, churches and stores. 7 miles to shipping point. Few fruit trees. 6 room house 24 x 36, ell 15 x 20, shed 54 x 19 connecting house and barn 140 x 40. Manure shed 12 x 34, henhouse 12 x 24. Telephone and electricity available. Good well. Price \$3,200 with stock and tools. Terms, $\frac{1}{2}$ down.

No. 81. 130 acre farm in Albion on Water-ville-Bellast highway. 34 acres tillage, 10 acres pasture. 1 mile to school, churches, shipping point and stores. $\frac{1}{4}$ mile frontage on Lovejoy

pond. House burned in 1932. Barn 32 x 34, well framed with good basement, equipped with hay carrier. It accommodates 12 cows and 3 horses. Telephone available and electricity. Spring water. Property on gravel road. Price upon application.

No. 82. 105 acre farm in Winslow. 1 mile to school, churches, shipping point and stores. Few fruit trees. 7 room house, with water in house and barn. Henhouse, garage, carriage and blacksmith shop. Large hip-roofed barn that will store 75 tons hay, silo, tieup for 20 head, stable for 6 horses. Telephone. Especially adapted for truck gardening, poultry, dairying and small fruit. Price \$3,200. Terms, \$1,200 cash, balance easy terms. Includes all tools.

No. 83. 100 acre farm in Branch Mills. 50 acres tillage, 30 acres pasture, 10 acres hardwood, 10 acres lumber. 40 rods to school, churches and stores. Bordering Lake, West Branch Sheepscot. 200 apple trees. 7 room house, nice large cellar. Garage, barn 40 x 50, cuts about 30 tons hay, pasture for 6 head cattle. Has beautiful view for summer cottages. Telephone and electricity available. Never failing well close to house. Especially adapted for potatoes, corn, beans and poultry. Price \$3,000. Terms, $\frac{1}{3}$ cash. Includes farming tools, sleds, wagons, racks, harnesses, 3 cows.

KNOX COUNTY

No. 84. 100 acre farm located in Rockland. 30 acres tillage, 30 acres pasture, 35 acres hardwood, 5 acres lumber. 1 mile to school. 3 miles to churches, shipping point and stores. 2 miles to lake. Few fruit trees. Colonial house, barn 32 x 42, tool shed, garage and tool house 20 x 24. Wagon and toolhouse 20 x 24. Telephone and electricity available. Pump in sink. Especially adapted for dairying, poultry and blueberry culture. Price \$4,000. Small grove of sugar maples.

No. 85. 60 acre farm at Thorne's Corner, Thomaston. 30 acres tillage, 30 acres pasture. $\frac{1}{2}$ mile to school, churches, shipping point and stores. 3 miles to Lake. Buildings in fair condition. 2 barns 40 x 40, tieup in one barn for 12 head, water and electricity in barn. Brook runs through pasture. Icehouse and house for 50 hens. Running water and telephone. Especially adapted for dairying or poultry raising. Price \$3,000.

No. 86. 30 acre farm at Wadsworth Point in Friendship. Churches and stores nearby. 2 miles to school. 60 rods shore frontage. New log cabin, 16 x 16, with fireplace. Electricity and running water available. Price \$2,500. Cash or \$1,500 down.

No. 87. 20 acre lot at Wadsworth Point in Friendship. A point of land partly wooded with 134 rods shore frontage, nice shore and fine sand beach. Road to drive around near shore. Desirable for a camp site or summer place. 1 mile from State tarred road. Price \$3,000. Terms, $\frac{1}{2}$ down.

No. 88. 35 acre farm located at Wadsworth Point in Friendship. 10 acres tillage, 19 acres pasture and 6 acres firewood. $\frac{3}{4}$ mile to churches and stores. 2 miles to school. 60 rods shore frontage. Few strawberry, raspberry and blueberry bushes. 2 family house of 12 rooms, electric lights and running water. 3 car garage, large henhouse 30 x 64, barn 30 x 40. Property on gravel road $\frac{1}{2}$ mile from State tarred road. Especially adapted for poultry and berries. Price \$4,000. Terms, $\frac{1}{2}$ down, balance first mortgage.

No. 89. 10 acre lot at Wadsworth Point in Friendship. Small island near shore about 100 rods long, cleared, all in blueberries. Property 1 mile from State road. Price \$1,500.

No. 90. 40 acre farm at Owls Head. 10 acres tillage, 10 acres pasture and remainder in mixed hard and soft wood. School, churches and stores nearby. House and barn in good condition. Telephone and electricity. Well and cistern. Property on 1st class State road. Especially adapted for poultry. Price \$3,000.

No. 91. 70 acre farm in Appleton. 20 acres tillage, 20 acres pasture, 20 acres hardwood, 10 acres lumber. 1 mile to schools, churches and stores. 6 miles to shipping point. 1½ mile to lake. Few apple and plum trees. Blueberries in pasture. 1½ story house with shed, cellar under both in good condition. Barn not connected to house. Telephone. Pump in sink. Especially adapted for general crops. Price \$2,200. Price includes 1 horse, 3 cows, 1 heifer, shoat, 2 turkeys.

No. 92. 65 acre farm at Crescent Beach, Owl's Head. 25 acres tillage, 40 acres pasture. School, stores and churches nearby. 5 minute walk to ocean and bathing beach. Few fruit trees. Strawberry and blackberry bushes. 10 room house, electric pump from well. Shed between house and barn for 2 autos. Barn 35 x 35. Electric lights in all buildings. 2 wells. 4 hen-houses and pig pen. Telephone. Especially adapted for general farming and poultry raising. Price \$3,500. Terms arranged.

No. 93. 76 acre farm on road from Union to Washington. 20 acres tillage, 30 acres pasture and 25 acres hardwood. 3 miles to churches and stores, 4 miles to school and shipping point. 3 miles to Lake. Few fruit trees. 8 room house, ell, barn 40 x 40 connected. Storehouse 17 x 38, garage, 2 henhouses. Pump in sink. Especially adapted for dairying and poultry. Price \$2,400.

No. 94. 98 acre farm located half way between Union and Warren. 20 acres tillage, 30 acres pasture, remainder in hardwood and lumber. School and stores nearby. 3½ miles to churches. 1 mile to lakes and rivers, ¼ mile to trout brook. Few fruit trees. Strawberry, raspberry and blackberry bushes. 7 room house with porch. 2 henhouses, barn 33 x 44, room for 12 head of cattle. Pump in kitchen. Property on State Aid road. Especially adapted for general farming. Price \$2,000. Terms, \$1,400 down, mortgage for balance.

No. 95. 100 acre farm in Washington. 40 acres tillage, 15 acres pasture, 15 acres hardwood, 30 acres lumber. ¼ mile to school, churches and stores. 12 miles to shipping point. 200 apple trees. Small 5 room house and ell. Barn 30 x 70 in fair condition. Telephone and electricity. Well water. Especially adapted for general farming. Price upon request.

No. 96. 130 acre farm located in Washington. 20 acres tillage, 40 acres pasture and remainder in hardwood and soft wood. 1½ mile to school and stores. 2½ miles to churches. House, ell, shed, and barn 38 x 60. Also large garage. There is also good lumber mill, good machinery, water power. Telephone and running water. Especially adapted for stock raising and dairying. Price reasonable. Includes stock.

No. 97. 65 acre farm in Washington. 25 acres tillage, 25 acres pasture and 10 acres hardwood and lumber. 1 mile to school and stores. 2½ miles to churches, 10 miles to shipping point. Small orchard. House, ell, shed, barn, all connected. Telephone. Water in house. Especially adapted for poultry, potato and hay. Price \$1500.

No. 98. 45 acre farm on Upper Mountain Street, Camden. 5 acres tillage, spring watered pasture of about 20 acres, remainder in hardwood and lumber. 1½ mile to school and stores, 2 miles to churches and shipping point. ¼ mile to lake. 1½ story house. Large piazza. House and barn connected by woodshed 14 x 20. Barn 30 x 45,

tieup for 4 cows, 1 large horse stall, 1 small horse stall. Cellar under house and part of barn. New 2 car garage, 2 or 3 other outbuildings now used for storage.

No. 99. 85 acre farm about ¼ mile from Walker Corner on Warren road. 38 acres tillage, remainder in pasture and lumber. 1 mile to school, churches and stores. ¼ mile to river. Few fruit trees. 9 room house, hot air furnace. 2 barns, henhouse, icehouse, 2 brooder houses. Telephone available. Electricity. City water and 2 wells with electric pump. State Aid road about 200 yards from farm. Especially adapted for dairying and summer home. Price \$3,700.

No. 100. 135 acre farm in Montville. 45 acres tillage, 25 acres pasture, 65 acres hardwood. ¼ mile to school and churches. 1½ mile to stores. 5½ miles shipping point. 100 apple trees. Few berries. 7 room 1½ story house, shed 65 ft., barn 50 x 50, all connected. Lightning rods. Telephone. Price \$2,500. Terms, ⅓ down. Price includes 2 cows, 1 horse, hens, all kinds of farming tools, sleds, wagons, separator, sawing machine, household furniture.

No. 101. 1½ story house on Main road to South Cushing. Large barn to store 9 tons of hay. Good barn cellar. 1 henhouse 15 x 30 feet nearly new. 2 never failing wells. Especially adapted for summer home or poultry farm. Price \$750.

No. 102. 23 acre farm on High Street, Thomaston. 18 acres tillage, 5 acres pasture, ½ mile to school, 1 mile to churches, shipping point and stores. Few fruit trees. 1½ story house, sun porch, 2 large barns, nice cellar, nice lawn, fine shrubs. Telephone, electricity and running water. Property on State road. Especially adapted for general farming or summer home. Price \$7,500.

No. 103. 60 acre farm on road to Camden and Hope. 20 acres tillage, remainder in pasture and woodlot. 3 miles to school, churches, shipping point and stores. 10 acres blueberries. House, barn, shop 14 x 18. Bath and sewing room, water hand pump from 20 ft. well. Telephone and running water. Especially adapted for poultry or small fruit. Shed joins kitchen and workshop. Price upon application.

No. 104. 80 acre farm in Vinalhaven. 3 miles to school, churches and stores. ¼ mile shore on Penobscot Bay. 11 finished rooms in house, besides hall and milk room, ell. Barn and henhouse. 2 good wells. Telephone. Especially adapted for summer home or boarders. Price \$3,500.

LINCOLN COUNTY

No. 105. 70 acre farm at head of Damariscotta Lake in Jefferson. 16 acres tillage, 30 acres in pasture and 24 acres hardwood and lumber. 1 mile to school and stores. 2 miles to churches. 5 miles to shipping point. 8 room house, barn 55 ft. long. Building joining all in good condition. Henhouse for 300 hens. 1 car garage, icehouse and other buildings. 2 never failing wells. Telephone. Electricity available. Property on gravel road. 3 miles to black road. Price \$2,600. Terms, \$1,600 down, balance to suit purchaser.

No. 106. 35 acre farm in Jefferson 2 miles from Coopers Mills. 15 acres tillage, 20 acres pasture. 1 mile to school, 2 miles to churches, shipping point and stores. ¼ mile to Clary Lake. Few fruit trees. Abundance of blueberries. House 30 x 15 with good cellar, barn 36 x 30. Ell 2 rooms new. Woodshed, henhouse 10 x 60, also one 10 x 30. 1 brooder house 10 x 15. Property on improved road. Especially adapted for poultry, beans and small fruit. Price \$700. Terms.

No. 107. 4 acre farm in village of Sheepscot. 4 acres in tillage. School, churches and stores nearby. $1\frac{1}{2}$ story house with ell. Brick and stone foundation. Small barn 24 x 30 completely rebuilt about 5 years ago. Telephone and electricity available. Well and spring water. Property on gravel road. Price \$1,500. Terms, \$1,000 down, mortgage 3 yrs.

No. 108. 90 acre farm in Boothbay. 40 acres tillage, pasture 15 acres, 12 acres hardwood and remainder in lumber. $1\frac{1}{2}$ mile to school, churches and stores. $2\frac{1}{2}$ miles to shipping point. Borders lake. Few fruit trees. $2\frac{1}{2}$ story house, ell and piazza. Barn, garage, hoghouse, storehouse, workshop, woodshed. Telephone and electricity available. Property on gravel road, $\frac{1}{2}$ mile to trunk line. Especially adapted for truck farming or blueberries. Price \$5,000. Terms, \$3,000 down.

No. 109. 45 acre farm in Damariscotta. 10 acres tillage, 35 acres pasture. $2\frac{1}{2}$ miles to school, churches, shipping point and stores. 4 miles to lake. $1\frac{1}{2}$ story 7 room house. Electric lights, hot and cold water, bathroom, 1 pipe furnace. Barn 26 x 26. Telephone. Property on gravel road. Ideal for poultry raising. Price \$1,800.

No. 110. 45 acre farm located in Waldoboro, Maine. 15 acres tillage, 30 acres pasture. School and churches nearby. $2\frac{1}{2}$ miles to shipping point and stores. 10 minute walk to salt water. 9 room Cape Cod house. Barn, shed and henhouse. Telephone available. Electricity in house and barn. Pump at sink. Property on gravel road. Price \$2,500. Terms.

No. 111. 90 acre farm at Whitefield. 45 acres tillage, 45 acres pasture and wood. 1 mile to school, churches and stores. 7 miles to shipping point. $1\frac{1}{2}$ story house wooden construction, and recently repaired. Barn. Telephone and running water. Property on good road. Especially adapted for general farming. Price \$1,700. Terms, \$500 down and balance on mortgage.

No. 112. 75 acre farm at Gross Neck in Waldoboro. 15 acres tillage, 10 acres pasture and remainder hardwood and lumber. $\frac{1}{2}$ mile to school, 3 miles to churches, shipping point and stores. Farm borders lake. 6 room house and ell. Woodshed and toilet in ell. Pump in sink. Barn 32 x 32, cistern in barn, 4 ties, 1 stall, 1 box stall. Hay fork. Henhouses 10 x 40, 10 x 12, brooder house. Garage new. Especially adapted for poultry or mixed farming. Price \$2,500.

No. 113. 85 acre farm in South Newcastle. 20 acres tillage, 15 acres pasture, 50 acres hardwood. $\frac{3}{4}$ mile to school. 1 mile to churches. 3 miles to stores. Bungalow 30 x 30 with basement. Barn 30 x 40. Bungalow has closed-in piazza. Electricity available. Property 1 mile from Federal Highway No. 1. Especially adapted for sheep, poultry or small fruit. Price \$2,000.

No. 114. 75 acre farm in West Waldoboro. 30 acres tillage, 8 acres pasture, remainder in mixed wood and lumber. School nearby. 3 miles to churches, shipping point and stores. Few apple trees and small fruit. 10 room house, piazza. Barn, garage, woodshed, henhouse 20 x 45, workshop 2 stories. Water in barn. Buildings have fireproof shingles and lightning rods. Telephone and electricity. Pump in house. Property on State Aid road. Especially adapted for poultry raising. Price \$3,200. Includes some furniture, farming tools, etc.

No. 115. 50 acre farm in Waldoboro, 10 acres tillage, 12 acres pasture and remainder in hardwood and lumber. $\frac{1}{2}$ mile to school. $1\frac{1}{2}$ mile to churches, shipping point and stores. 25 rods to salt water. 8 room house. Barn 32 x 34. 2 brooder houses, 2 hen pens 18 x 20, 1 hen pen

12 x 16. House painted white with green blinds. View overlooking Broad Bay and Medomak River. Telephone and electricity. Pump in sink. Especially adapted for poultry, or summer home. Price \$3,000. Terms, \$1,000 on mortgage.

No. 116. 100 acre farm in Sheepscot, 5 miles between Wiscasset and Damariscotta. 30 acres tillage, 15 acres pasture, remainder in wood. School, churches and stores nearby. 1 field borders Sheepscot River. Few fruit trees. 9 room house with shed and big barn connecting. Dry cement cellar, cistern in cellar. Hot water heater, screened piazza on front of house. Another barn near dwellings for farming tools and hay. Telephone, electricity. Cistern and never failing spring. Also well near barn. Especially adapted for general farming. Price \$4,000.

No. 117. 48 acre farm located in Nobleboro Center. 14 acres tillage, 24 acres pasture, remainder in hardwood and lumber. School, churches and stores nearby. Few fruit trees. Modern set of buildings connected with all modern conveniences of a city home, large screened in porch and a water system in barn. Telephone, electricity and running water. Property located on Route 1. Especially adapted for poultry and dairying. Price \$4,000.

No. 118. 100 acre farm located in Alna. About 50 acres tillage, remainder in woodlot. 1 mile to school, churches and stores. Shipping point 9 miles. Sheepscot River borders farm. Fruit trees. House and barn connected, equipped with lightning rods. Henhouse, workshop, icehouse. Property on gravel road. Especially adapted for general farming, and blueberries. Price \$2,000. Terms to be arranged.

No. 119. 100 acre farm in Woolwich. 40 acres tillage, 60 acres hardwood, pasture. 1 mile to school, churches. 2 miles to shipping point, stores and nearest city. Farm overlooks Nequaset Lake. 2 story 9 room house. Large barn. Garage and blacksmith shop just built. Telephone and electricity available. Well water. Property on State Aid road. Especially adapted for general farming or poultry raising. Price \$1,000. Terms.

No. 120. 135 acre farm on Atlantic Highway in Nobleboro. 45 acres tillage, 50 acres pasture and remainder in woodlot. School, churches and stores nearby. Farm borders lake. 75 apple trees. House, stable and barn connected. Workshop, storehouse, icehouse and henhouse. Water in house and barn. Telephone and electricity. Price \$6,500.

No. 121. 75 acre farm located in New-castle. 25 acres tillage, 50 acres pasture, remainder mixed wood. 1 mile to school, churches, shipping point and stores. $1\frac{1}{2}$ story house with outer buildings attached. Barn 70 x 40. Carriage house 30 x 40. Telephone and electricity available. Running water. Property on gravel road. Especially adapted for general farming and hay. Price \$2,800.

No. 122. 114 acre farm in North Waldoboro. 8 acres tillage, $3\frac{1}{2}$ acres pasture. 1 mile to school, churches and stores. $\frac{1}{2}$ mile to lake. Old fashioned house 4 rooms, pantry and hall first floor, second floor unfinished. Barn in good condition. Especially adapted for summer home, poultry raising. Price \$600.

No. 123. 600 acre farm in South Jefferson. 100 acres tillage, 25 acres pasture, remainder in hardwood and lumber. School, churches and stores nearby. Dyers River runs through farm. $\frac{1}{2}$ mile to 2 lakes. $1\frac{1}{2}$ story house Cape Cod style. 3 fireplaces. Dutch oven. Barn 75 x 40 with tieup for 18 head cattle, 25 tons hay. Garage, storehouse, etc. Telephone available. Never failing well. Property on gravel road. Especially adapted for apples, potatoes or general farming. Price \$6,600.

No. 124. 50 acre farm on West Alna road in Alna. 25 acres tillage, 25 acres pasture and woodlot. $\frac{1}{2}$ mile to school, churches and stores. $\frac{3}{4}$ mile to Sheepscot River. Several apple trees. Plenty of blueberries near house. House with 7 rooms finished, also large pantry and large open chamber, workshop over all. Carriage house, woodshed and barn. Telephone available, also electricity. Water from never failing spring. Price \$1,600, terms cash.

No. 125. 100 acre farm on State road in Waldoboro. 25 acres in tillage, 10 in pasture and remainder in mixed wood. Church, schools and stores nearby. $\frac{1}{2}$ mile to shipping point. 100 yards to river, 5 or 10 miles to lakes. 100 apple trees, also few pear and plum trees. Blackberry bushes. All buildings in good condition. Adapted for general farming, poultry raising or tourist home. Telephone, electricity and running water. Price \$8,000, terms cash.

No. 126. 145 acre farm located in town of Jefferson at head of Damariscotta Lake. $\frac{1}{2}$ mile from school and stores. 4 miles to shipping point. 40 acres tillage, 45 acres pasture, 35 acres hardwood, 30 acres lumber. Barn 44 x 80 with cellar, tieup for 30 head cattle, in good condition. Large old fashioned 10 room house. Henhouse 12 x 60. Blacksmith and carpenter shop, large woodshed. All buildings in excellent repair. Telephone, electricity and running water. Especially adapted for general farming and summer trade. Price on application.

No. 127. 160 acre farm on State Highway Route 126 in Jefferson. 20 acres in tillage, 30 in pasture, 110 in hardwood and lumber. $\frac{1}{4}$ mile to stores, $1\frac{1}{2}$ mile to school, 3 miles to churches, and shipping point. About 40 apple trees, $1\frac{1}{2}$ story house, long ell with built-in refrigerator and chance for car, icehouse, 6 henhouses, 2 brooder houses, barn with tieup for 5 head. Telephone, electricity near but not installed. Running water available but good well water in house. Adapted for dairying or poultry raising. Price \$1,900. Terms \$1,000 cash, balance mortgage. This price includes some tools and incubators.

No. 128. 100 acre farm in Jefferson. 40 acres tillage, 20 acres pasture and remainder in wood lot. $\frac{1}{4}$ mile to stores, 2 miles to churches and school. 13 miles to shipping point. Few fruit trees. 8 room house with 5 rooms downstairs, 3 rooms and large bath second floor. Set tubs and piazza. 4 henhouses, double garage. Large barn. Telephone, electricity and running water. Price \$4300. Terms.

No. 129. 6 acre farm in South Bristol. 2 acres in tillage and remainder in pasture. School nearby. $\frac{1}{2}$ mile to churches and stores. Blueberry and blackberry bushes. $1\frac{1}{2}$ story house has 8 rooms, large cistern in cellar and in very good condition. Large barn could keep 1 cow, pigs and all the poultry one would wish. Telephone and electricity available. Pump in sink. Adapted for poultry raising or small fruit. Price \$2,200. Terms.

No. 130. 1 acre farm in Sheepscot village. $\frac{1}{4}$ mile to school, churches and stores. 5 miles to shipping point. Few fruit trees and berries. $1\frac{1}{2}$ story wooden 6 room house. Water in house. Workshop, woodhouse and garage. Telephone and electricity available. Property on State Aid road. Especially adapted for market gardening. Price \$800. Includes some furniture.

No. 131. 120 acre farm in Jefferson. 30 acres tillage, 10 acres pasture, 40 acres hardwood and lumber. $1\frac{1}{2}$ mile to school, churches and stores. Borders Damariscotta Lake. Few fruit trees. 12 room house, large barn, 2 car garage. Long shore frontage on lake, 30 cottage lots. 4 cottages furnished, electric lights, running water, garage for each cottage. Telephone. Property on State highway. Especially adapted for general farming and hotel business. Price \$10,000.

No. 132. 235 acre farm in Wiscasset. 20 acres tillage, 10 acres pasture, 20 acres hardwood, remainder in wood lot. 4 miles to school, churches, shipping point and stores. Borders Gardiner Pond. Few fruit trees. 7 room house, 2 car garage, barn will accommodate 12 head cattle, 2 horses; pig house; duck and chicken house. Extra small 4 room house. Large hay barn. Property on tar road. Price \$12,000.

No. 133. 50 acre farm in South Bristol. Route 129. 9 acres tillage, remainder in pasture and wood lot. $1\frac{1}{2}$ mile to school, churches. Shipping point and stores 4 miles. Borders Damariscotta River. New house, piazza on front, back porch, large work shed, woodshed, garage, well. Electricity available. Especially adapted for market gardening, poultry, chance for cottages at shore. Price \$3,500.

OXFORD COUNTY

No. 134. 80 acre farm located in South Waterford. 30 acres in tillage, balance in pasture and lumber. $\frac{1}{2}$ mile from school, churches and stores. 10 miles to shipping point. 100 apple trees, few blackberry and blueberry bushes, also a grape vine. House in good condition. Barn and stable. Telephone, electricity available. Running water in barn and stable, well in house. Especially adapted for general farming. Price \$1,500 for farm without lumber.

No. 135. 245 acre farm in Buckfield. 60 acres tillage, remainder in pasture, hardwood and lumber. School nearby. Churches and stores 3 miles. About a mile to summer resort. 1100 apple trees. Few pear and plum trees. 2 tenement, 12 room house, 2 porches and shed. Stable joins house, barn 45 x 80, silo, garage, blacksmith shop, henhouse and storehouse. Telephone. Nice spring water. Especially adapted for all crops and dairying. Price \$5,500.

No. 136. 75 acre farm 1 mile north of Brownfield Station on Paquawket Trail Route 113. 65 acres tillage, 10 acres pasture. 1 mile to school, shipping point and stores. 2 miles to churches. 1 mile to lake. 2 story house connecting shed and stable. Lightning rods, steel roofed, running water in house and stable. Barn 40 x 60 tieup for 15 head. Silo, 2 henhouses, carriage house and garage for 3 cars. Telephone and electricity available. Never failing well. Property on black road. Price \$3,500. Terms $\frac{1}{2}$ down, balance easy terms. Includes farming tools, mowing machine, horserake, plow, harrow, cultivator, sleds, 2 incubators, etc.

No. 137. 75 acre farm in Poland. 20 acres tillage, 15 acres pasture, 40 acres hardwood and lumber. $\frac{3}{4}$ mile to school, 2 miles to churches and stores, 3 miles to shipping point. $\frac{1}{4}$ mile to Tripp Lake. 7 room house, woodshed, 40 x 40 barn with tieup for 8 head of cattle. Electric lights, well water. House for 200 hens. Telephone. Property on dirt road, $1\frac{1}{2}$ mile to black road. Price \$2,500.

No. 138. 138 acre farm in Norway. 30 acres tillage, remainder pasture and woodland. School and churches nearby. 3 miles to shipping point and stores. $\frac{1}{4}$ mile to lake. Few fruit trees and berries. 2 story house, split stone cellar with cement floor. Ell 30 x 18. Woodshed, barn 40 x 60 with nice cellar and tieup for 18 head cattle. All these buildings are connected. Separate stable used for garage, tools and 150 hens. Telephone, electricity and running water. Property on black road. Especially adapted for summer boarders and truck gardening. Price \$6,500. Price includes farming tools, 125 hens, stove wood, 2 brooder houses and sap house with syrup making equipment.

No. 139. Summer home. Bungalow of 5 rooms and bath, large fireplace, breakfast nook, 2 car garage with cement floor. Many shade trees, beautiful view. Maine R.F.D. Telephone available. Electricity and running water. Property located within 2 rods of Roosevelt Highway. Price \$2,000. Terms.

No. 140. 200 acre farm in Denmark. 25 acres tillage, 175 acres pasture, hardwood and lumber. 3 miles to school, churches, shipping point, and stores 6 miles. 5 minutes' walk to lake. 11 room house, stable, barn and usual outbuildings. Property on dirt road 1 mile to Macadam Trail 18. Especially adapted for summer home or boys' and girls' camp. Price \$3,000. Terms.

PENOBSCOT COUNTY

No. 141. 4 acre farm in west end of Carmel village on Federal Highway No. 2. 3 acres tillage, 1 acre pasture. 300 to 500 yds. to school, churches and stores. 3 miles to Etna Pond. 6 room house with ell, woodshed, henhouse and stable all connected. 1 other outbuilding for farm implements or garage. Chance to keep 3 cows and 100 hens. House and ell all newly shingled. A good well of water in yard. Telephone and electricity available. Especially adapted for early market gardening. Price \$1,700.

No. 142. 250 acre farm in Bangor, corner Broadway and Pushaw Lake road. 200 acres tillage, remainder pasture, hardwood and lumber. School, churches and stores nearby. Telephone, electricity and running water. House and ell with fine basement. Woodshed. Barn 44 x 120. Property on cement road. Especially adapted for potatoes, grain or dairying. Price \$7,000. Terms, \$2,500, balance easy terms.

No. 143. 160 acre farm in Corinna. 40 acres tillage, 98 acres pasture, 18 acres hardwood, 4 acres lumber. 1/4 mile to school. 1 1/2 mile to shipping point, 3 miles to churches and stores. 2 1/2 story house with ell, shed and barn connected. Barn 84 x 42. Basement under barn. Horse stable 30 x 36 or carriage house across road, also 2 car garage, sheep barn 22 x 40 connected with barn. Telephone. Electricity available. Especially adapted for general crops. Price \$4,500. Terms, 1/2 cash.

No. 144. 120 acre farm in West Exeter. 80 acres tillage, remainder pasture and wood lot. 1/2 mile to school and churches. 4 miles to shipping point and stores. Lake 5 miles. 1 1/2 story 8 room house, split stone cellar, woodshed, milk room and carriage house. Barn 45 x 56, sheep pen 14 x 28, henhouse 16 x 40, icehouse. Telephone. Price \$4,000. Terms 1/2 down, balance on time.

No. 145. 87 acre farm in town of Corinna on State road between Dexter and Corinna. 20 acres tillage, remainder in pasture and lumber. 2 miles to school, and shipping point. 4 miles to churches and stores, also Dexter Lake. House and ell, barn 45 x 60 with basement. A garage and workshop 40 x 20. Water in barn and house pumped. Especially adapted for stock raising. Price \$4,000.

No. 146. 73 1/2 acre farm on Main road to Bangor by way of Stetson. 30 acres tillage, 20 acres pasture, 23 1/2 acres lumber and wood. 1-5 mile to school. 1 1/2 mile to churches, shipping point and stores. 8 room house, fireplaces in 2 rooms, large ell. Barn 40 x 45, basement, henhouse 18 x 42. Telephone and well water. Electricity available. Property on gravel road. Price \$2,600. 1/2 cash. Price includes farming tools.

No. 147. 68 acre farm in Etna. 20 acres tillage, 48 acres in pasture with wood and lumber. 1 mile to school, 3 miles to churches, shipping

point and stores. 3 miles to Etna or Plymouth Ponds. Few fruit trees. House 4 rooms downstairs, 1 finished room upstairs and open chamber. Large barn. Icehouse can be used for henhouse or garage. Property on improved gravel road. Especially adapted for dairying, or small truck farming. Price \$1,000. Terms \$200 down, balance easy terms.

No. 148. 5 acre farm 3 miles from Penobscot village on Castine road. 1 mile to school and stores, 3 miles to churches. Few fruit trees and berries. 10 room house. Good garage with woodshed, icehouse, henhouse. Pump in sink. Telephone available. Property just off State road No. 175. Especially adapted for summer home, hotel or hospital. Price \$4,000, terms 1/2 down.

No. 149. 14 acre farm located in Lee on gravel road. 2 1/2 miles from school, churches and stores. 12 miles to shipping point. A great many apple trees, also few blackberries. An old fashioned home of five rooms, two sheds and stable made over for garage. Telephone available. Spring water. Adapted for poultry raising or summer home. Price \$500. Terms reasonable.

No. 150. 220 acre farm located in town of Etna. 100 acres tillage, 30 acres pasture, 70 acres hardwood and 20 acres lumber. 18 miles from Bangor. Farm has 5,000 apple trees; varieties are Baldwins, Delicious, Northern Spys, Gravensteins and Greenings. Mostly young trees. Buildings in good repair. Electricity and running water. Especially adapted for orcharding and general farming. Buildings are located about 1/2 mile from cement road leading from Augusta to Bangor. Price \$8,000. Terms, 1/2 cash, balance easy payments.

No. 151. 185 acre farm located in Stetson. 2 miles from school, churches and stores, 7 miles to shipping point. 70 acres in tillage, 55 acres pasture, balance in hardwood and lumber. 185 apple trees, a few plum and cherry trees. 2 barns 45 x 50, stable for horses, also will accommodate 2 cars. Sheep shed 25 x 50, large henhouse, main house and ell with 11 rooms in fine condition. Telephone, running water. Especially adapted for stock farm and general farming. Price \$5,000. 1/2 cash.

PISCATAQUIS COUNTY

No. 152. 140 acre farm in Abbott. 80 acres tillage, 30 acres pasture, 30 in hard and soft wood. 1/2 mile to school, churches and stores. Stone house and ell of 11 rooms, shed, barn 105 x 45 connected. Lightning rods, 2 wells, spring water. Cellar under house. Telephone available. 2 pumps in house. Property on dirt road 1/2 mile to third class road. Especially adapted for potato raising or general farming. Price \$5,000, terms 1/2 down, balance on mortgage.

No. 153. 125 acre farm in Monson. 30 acres tillage, 25 pasture and 75 fir, spruce, cedar. 1 1/2 miles from school, churches, shipping point and stores. Moosehead Lake 25 minutes' drive. 100 apple trees. Few berries. 5 room bungalow type house with piazza, cellar, attic for storage. Good shed with toilet attached. Barn 36 x 90 with horsefork. Telephone. Property on dirt road 1/2 mile from Highway 105. Especially adapted for market garden, summer home. Price \$2,000. Terms \$1,200, balance easy payments.

No. 154. 80 acre farm 2 miles east of Dover-Foxcroft village. 25 acres tillage, 15 acres pasture, remainder in wood lot. 1 mile to school, churches, shipping point and stores. 5 miles to Sebec Lake. Few small fruits. 7 room house, ell, garage, shed, barn 40 x 50, 2 story henhouse, brooder house, icehouse. Buildings in good repair and all connected except brooder house. Telephone. Drilled well at door. Electricity available. Adapted for general farming. Price \$3,000. Price includes some farming tools.

SAGADAHOC COUNTY

No. 155. 100 acre farm in Bowdoinham. 45 acres tillage, 40 acres pasture, 15 acres hardwood. School and churches nearby. 3 miles to shipping point and stores. 1½ story house wooden construction, small barn and numerous outbuildings. Especially adapted for general farming and market gardening. Price \$2,100. Terms \$600 down and balance on mortgage.

No. 156. 150 acre farm in Richmond. 100 acres tillage, 50 acres pasture and wood lot. School nearby. 2 miles to churches. 2½ miles to shipping point. 5½ miles to stores. Buildings of wooden frame construction. House 1½ story, large barn. Good repair. Well water. Especially adapted for general farming, potatoes and hay. Price \$1,600. Terms, \$400 down and balance on mortgage.

No. 157. 5 acre farm in town of Phippsburg, just outside city of Bath. ¼ mile to school and stores, 1 mile to churches. Few fruit trees and strawberry bed. 2 story house 8 rooms, shed, barn, garage or boat house, henhouses. Chance for cottages on shore. Good well water. Telephone and electricity available. Pump in shed. Property on State Aid road. Price \$2,500. Terms, ½ down, easy terms.

No. 158. 150 acre farm in North Woolwich. 40 acres tillage, 110 acres pasture, and wood lot. ½ mile to school and churches. 4 miles to stores, 8 miles to shipping point. 100 apple trees. 2 houses and long ell of about 20 rooms for 2 families. Barn 104 ft., sheep shed, icehouse, garage, granary, hoghouse and 2 henhouses. Telephone and electricity available. Cistern and well water. ½ mile from State Aid road. Especially adapted for all crops and stock farm. Price \$2,000. Terms. Price includes some stock and farming tools.

No. 159. 65 acre farm on Foreside road in Topsham. 30 acres tillage, remainder in pasture and wood lot. 3½ miles to school, churches and stores. 5 miles to shipping point. On shore of Merrymeeting Bay. 1½ story 11 room house. Shed and large garage. 2 barns, henhouse. Telephone available. Property on gravel road. Especially adapted for market gardening and boarders. Price \$2,500.

No. 160. 85 acre farm in Brunswick. 40 acres in tillage, remainder in pasture, hardwood and lumber. 1½ mile to school, 2½ miles to churches, 4 miles to stores and 5 miles to shipping point. Few apple trees and berries. 8 room house, barn 40 x 40 for 12 head stock, 2 henhouses, garage, icehouse, woodshed. Telephone. Pump in sink. Property on gravel road. Especially adapted for stock raising or general farming. Price \$1,500. Price includes tools.

No. 161. 170 acre farm located 1 mile from State road, 5 miles from schools, churches and stores, 75 acres tillage land, 50 acres pasture, balance in hardwood and lumber. Few apple trees. House has 8 rooms and bath. Hardwood floors upstairs and down, hot and cold water. 2 barns and stable in fair condition. Never failing well. Telephone. Farm especially adapted for general farming. Price \$4,000.

SOMERSET COUNTY

No. 162. 225 acre farm in Cornville. 90 acres tillage, 75 acres pasture and 60 acres hardwood. 1½ mile to school, 4 miles to churches and shipping point, 3 miles to stores. 1,000 apple trees. Cultivated blackberries. 1½ story house, stable, 2 barns, garage and storehouse. Telephone, electricity and running water. Property on dirt road, 1 mile to State road. Especially adapted for general farming and orcharding. Price \$8,500. Terms to be arranged. Price includes all kinds of farming tools and tractor.

No. 163. 250 acre farm in Madison. 100 acres tillage, 150 acres pasture and wood lot. 1 mile from school, churches. 4 miles to shipping point and stores. Farm borders on Kennebec River. 2 story house, wood and brick construction. Large barn wooden frame construction. 1 barn partially completed. Silo and other outbuildings. Especially adapted for general farming and dairying. Price \$4,000. Terms, \$1,000 down and balance on mortgage.

No. 164. 180 acre farm in Skowhegan. 40 acres tillage, 40 acres pasture, 100 acres hardwood. 3 miles to school, churches, shipping point and stores. 1½ story frame house, barn and garage connected. Telephone, electricity and running water. Property on State road. Especially adapted for dairying. Price \$3,500. Terms, \$1,000 down and balance on mortgage.

No. 165. 140 acre farm 2 miles from Madison on county road to Norridgewock. 40 acres tillage, 60 acres pasture, 15 acres hardwood, 25 acres lumber. 2 miles to school, churches, shipping point and stores. Few apple, plum and cherry trees. 1½ story house with nice cellar. Barn 42 x 70, basement under all, ties for 16 cows and 3 horses. Telephone and electricity available. Running water. Especially adapted for hay, potatoes, corn and grain. Price \$2,800. Terms, \$2,000, balance easy terms.

No. 166. 75 acre farm in town of Madison on Lakewood road. 20 acres tillage, 35 acres pasture, 20 acres hardwood and lumber. 2 miles to school, churches and shipping point. 1½ miles to stores. Few apple trees and small fruit. 1½ story 8 room house including bath and running water, woodshed and icehouse. Barn 36 x 50, silo. All buildings connected, newly painted inside and out. Telephone, running water and electricity. Property on State Aid road. Especially adapted for general farming. Price \$5,000. Terms, \$3,000 down payment, remainder easy terms.

No. 167. 97 acre farm in Pittsfield on Route No. 2. 47 acres tillage, 25 acres pasture, 25 acres hardwood and lumber. ¼ mile to school, 3½ miles to shipping point, 5 miles to churches and stores. Few apple trees and berries. 1½ story house, good cellar, with piazza. Henhouse for 100 hens. Barn 60 x 41, tieup for 11 head cattle, 1 pair horses. Metal silo. Telephone available. Property on State road. Especially adapted for potatoes and all crops. Price \$3,000.

No. 168. 200 acre farm on Russell road in Madison. 50 acres tillage, 75 acres pasture, 75 acres hardwood and lumber. ¼ mile to school, 4 miles to churches and stores, 2 miles to lake. 100 apple trees. 11 room house, large porch 12 x 40. Shed 25 x 40, carriage shed 30 x 30, henhouse 15 x 20, brooder house. Barn 36 x 80 ties up 28 head, 4 stalls for horses. Telephone, electricity and running water. Especially adapted for all crops. Price \$6,000. Terms to be arranged.

No. 169. 150 acre farm on Russell road in Madison. 50 acres in tillage, 60 acres pasture, remainder in hardwood and lumber. ¼ mile to school, 4½ miles to churches and shipping point. 150 apple trees. 2½ story house of 10 rooms, 2 sheds, barn 40 x 40 ties 14 head, 1 box stall, henhouse for 300 hens. Water in barn front of stock. Telephone. Especially adapted for all crops. \$5,000. Terms to be arranged.

No. 170. 170 acre farm between Madison and Norridgewock. 40 acres tillage, 50 acres pasture, 80 acres hardwood and lumber. 3½ miles to churches, shipping point and stores, 4½ miles to school. 7 room house, water in sink. 1 shed 20 x 25, 1 shed 25 x 30, icehouse. Barn 36 x 80 ties up 26 head of cattle, 2 horse stalls. Telephone. Property on dirt road. Price upon application.

No. 171. 1 acre farm in Athens. 10 rods from school, churches and stores. House, ell, piazza, stable, woodshed. Henhouse for 500 hens. Telephone, electricity and running water. Property on State road. Especially adapted for poultry. Price \$600. $\frac{1}{2}$ cash, balance easy terms.

No. 172. 175 acre farm in Cornville Center. 45 acres tillage, 45 acres pasture, 85 acres hardwood and lumber. $\frac{1}{4}$ mile to school and churches, 1 mile to stores, 6 miles to shipping point. House, ell, shed, stable, barn, icehouse and sheep shed. $\frac{1}{2}$ mile away is 2 more barns, shed and corncrib. Piggery. Telephone. Pump and good spring. Especially adapted for cattle, sheep and hogs. Price \$1,800. Terms easy.

No. 173. 15 acre farm in Chesuncook. 6 acres tillage, 9 acres hardwood. 5 minutes' walk to school, churches and stores. Borders Chesuncook Lake. 15 room $2\frac{1}{2}$ story house, shed, sun-room, barn, 3 cottages, icehouse, toolhouse, boat-house. Delco Light Plant. Furnace heat. Telephone. Property on gravel road. Especially adapted for hotel, overnight camps, club house. Price \$2,900. Terms, \$2,000 down, balance easy terms.

No. 174. 75 acre farm between Norridge-wock and Skowhegan. 40 acres tillage, remainder in pasture and wood lot. 1 mile to school, churches and stores. $1\frac{1}{2}$ story house, large porch. Furnace in cellar. Barn 30 x 40, new tieup built on, 30 x 14, hayfork in barn. Cellar in barn. Telephone, electricity, running water. Property on macadam road. Especially adapted for all kinds of farming. Price \$2,800. Terms, $\frac{1}{2}$ down, balance easy terms.

No. 175. 450 acre farm between Canaan and Hartland. 40 acres tillage, 50 acres pasture, 100 acres hardwood, 360 acres lumber. 5 miles to school, churches, shipping point and stores. Farm borders Morrill Pond. Few fruit trees. $1\frac{1}{2}$ story house, ell, long shed, barn, new garage with tenement overhead, henhouse, mill, boats, wharf, 2 pine groves on lake, a lot of shorage on spring fed lake. Telephone. Property on State road. Especially adapted for summer home or boys' and girls' camp. Price \$8,000. Terms, $\frac{1}{2}$ cash.

No. 176. 100 acre farm in Anson. 60 acres tillage, 20 acres pasture, 10 acres hardwood, 10 acres lumber. $1\frac{1}{2}$ mile to school, churches, shipping point and stores. Small orchard. $1\frac{1}{2}$ story frame dwelling 36 x 40 with good cellar. Running spring water from spring on farm. 2 barns, sizes 40 x 70 each. Valuable gravel pit located on west of farm on State road. Telephone, electricity. Property on good gravel road, $\frac{1}{4}$ mile off State road. Price \$1,600. Terms reasonable.

No. 177. 78 acre farm in Canaan on road leading to Skowhegan. 28 acres tillage, 16 acres pasture, 16 acres hardwood, 18 acres lumber. $1\frac{1}{2}$ mile to school, churches and stores, 7 miles to shipping point. $\frac{1}{2}$ mile to Lake George. House, barn with tieup for 7 cows, horse. 54 ft. shed connects house to barn. Henhouse. Telephone. 2 wells. Especially adapted for dairying or poultry raising. Price \$1,400.

No. 178. 60 acre farm in St. Albans. 15 acres in tillage, 25 acres pasture, 20 acres hardwood and lumber. 1 mile to school, churches and stores. $1\frac{1}{2}$ mile to shipping point. Few berries. House, woodshed, barn, toolshed, icehouse and milk room. Well water. Telephone. Especially adapted for early crop land. Price \$2,000.

No. 179. 100 acre farm in Athens. 40 acres tillage, 60 acres pasture and wood lot. $\frac{1}{2}$ mile to school, churches and stores. 2 miles to lake. $1\frac{1}{2}$ story house, 3 henhouses, hoghouse, barn with tieup for 11 head, 2 stalls for horses, woodshed. Telephone, electricity. Pump in house and barn. Especially adapted for all kind of crops. Property on third class road. Price \$3,500.

No. 180. 120 acre farm in Madison. 22 acres tillage, 12 acres pasture, 35 acres hardwood, remainder in lumber. $\frac{1}{2}$ mile to school, 2 miles to churches. $2\frac{1}{2}$ miles to shipping point and stores. 100 apple trees, few small fruit. 2 story house, hardwood floors, bathroom, fireplace. Barn. Henhouse 76 x 12. 3 brooder houses. Garage. Telephone available. Pump in house. Property on gravel road. Especially adapted for potato raising, sweet corn, or poultry. Price \$4,000. Terms.

No. 181. 82 acre farm between Skowhegan and Hinkleley. 40 acres tillage, 15 acres pasture, remainder in hardwood and lumber. School nearby. 4 miles to stores, shipping point and churches. Few fruit trees and berries. House, nice cellar, bathroom, furnace, large porch used for sleeping purposes. Stable, barn, double garage, storehouse. Telephone and running water. Especially adapted for general farming. Price \$4,000. Includes 9 head cattle, 50 hens and farming machinery.

No. 182. 265 acre farm on State road in Starks. 75 acres tillage, 100 acres pasture, 40 acres hardwood, 50 acres lumber. 1 mile to school, 3 miles to churches, shipping point and stores. Few fruit trees. 2 tenement, 14 room house. 2 barns. Stable 30 x 36. Telephone. Electricity available. Running water. Especially adapted for hay, grain and crops. Price \$5,500. Terms, $\frac{1}{2}$ cash. Price includes 20 head cattle, 80 sheep, 2 horses, hogs, hens and tools.

No. 183. 250 acre farm in New Portland. 50 acres tillage, 50 acres pasture, 150 acres hardwood and lumber. 1 mile to school, 2 miles to churches and 5 miles to stores and shipping point. 75 apple trees, 10 room brick house, long shed, carriage house, stable and barn all connected. Running water to both house and barn. Telephone. Electricity available. Especially adapted for hay, potatoes or grain. Price \$3,000. Terms, \$1,500 down.

No. 184. 70 acre farm on Middle Water-ville road. 35 acres tillage, 35 acres pasture and wood lot. 2 miles to school, churches, shipping point and stores. Few apple, pear and plum trees. 9 room house, shed, barn and poultry houses. Buildings all connected. Telephone and electricity. Pump in house and barn. Property on third class road. Especially adapted for general farming and poultry. Price \$3,800. Price includes 8 head of cattle, 2 horses, 1 hog and farm machinery.

No. 185. 80 acre farm in Athens. 20 acres tillage, 20 acres pasture and remainder in hardwood and lumber. School nearby. $2\frac{1}{2}$ miles to churches and stores. 8 miles to shipping point. 6 room house, ell, barn, henhouse, garage. Well water. Price \$1,000. $\frac{1}{2}$ down.

No. 186. 200 acre farm in Brighton Plan-tation. 50 acres tillage, 50 acres pasture, 25 acres hardwood, 75 acres lumber. 3 miles to school, 4 miles to churches and stores, 8 miles to shipping point. 13 room house, large porch, ell and shed. 2 barns, sheep shed, garage. Telephone available. Especially adapted for general farming. Price \$1,500. Terms, $\frac{2}{3}$ cash.

No. 187. 50 acre farm in Mercer. 15 acres tillage, 15 acres pasture and remainder in hardwood and lumber. $1\frac{1}{2}$ mile to school, 3 miles to churches and stores, 10 miles to shipping point. 7 room house, well in cellar, pump in sink, long shed, connecting with very good barn. Tieups for 6 cows, 2 horses, calf pen, room for hens. Property on dirt road $1\frac{1}{2}$ mile off gravel road. Especially adapted for poultry raising or summer home. Price \$700.

No. 188. 125 acre farm in West New Port-land. 50 acres tillage, 15 acres pasture, 15 acres hardwood, 45 acres lumber. 5 minutes' walk to

school, churches and stores. No house but plenty of lumber to build one. Large barn 100 x 40 for hay and stock, besides sheep sheds attached to barn. Nice spring water. Property on State highway. Especially adapted for stock farm or fruit farm. Price \$2,500.

No. 189. 225 acre farm in Norridgewock. 125 acres tillage, remainder in hardwood, lumber and pasture. 4 miles to school, churches, shipping point and stores. Few fruit trees. 2 story house and ell with 45 x 15 shed connecting to 45 x 78 barn with tieup for 28 head. 2 large silos, 2 henhouses, 1 brooder house, machine storehouse 24 x 72, 2 car garage 18 x 20. Telephone. Running water. Property on gravel road. Especially adapted for dairying and general crops. Price \$5,000. Terms, part cash, balance on terms.

No. 190. 135 acre farm in Canaan. 20 acres tillage, 20 acres pasture, remainder in hardwood and lumber. 1½ mile to school, churches and stores. Wood lot borders Lake George. 1½ story house, ell, fine split stone cellar under both. Piazza. Shed about 16 x 55. Barn 29 x 34 resilled and repaired. Well water. Property on dirt road, 1 mile to black road. Especially adapted for poultry, sheep and small fruits. Price \$2,000.

No. 191. 80 acre farm in Cornville Center. 25 acres tillage, 40 acres pasture, 15 acres lumber. 2½ miles to school, stores and churches, 7 miles to shipping point. Few fruit trees. 1½ story house and ell, shed, stable, carriage house. Large barn across road. Good well. Telephone and electricity. Cistern. Property on State road. Especially adapted for corn, grain. Price \$1,900. Terms.

No. 192. 45 acre farm in Madison. 15 acres pasture, 15 acres tillage and remainder in wood lot. 2 miles to school, churches, shipping point and stores. Few fruit trees. 6 room house, barn 36 x 32, silo, henhouse. Telephone available. ½ mile from State road. Especially adapted for small fruits and market gardening. Price \$2,500. Includes stock and farming tools.

No. 193. 4 acre farm in Cornville. 1 mile to school and stores, 6 miles to churches and shipping point. 2½ story house, ell 22 x 30, henhouse 14 x 30, and shed. Telephone and electricity available. Well. Property on dirt road 1 mile from State Highway Route 150. Especially adapted for summer home or poultry farm. Price \$1,200.

No. 194. 50 acre farm 4½ miles from Skowhegan. 15 acres tillage, 15 acres pasture, 20 acres hardwood. 1½ mile from school, churches and shipping point. ½ mile to Wesserunnett Lake. Few apple trees and strawberry bushes. House, ell, shed, stable, barn, tool shed, henhouse for 100 hens, garage, icehouse full of ice. Telephone available. Electricity. Wells with pump at sink and in barn. Property on Main road. Especially adapted for truck gardening, berries, dairying and all round farming. Price \$2,800. Terms, \$1,500 down, balance mortgage 5%. Includes 1 work horse, Guernsey cow and all farming tools.

No. 195. 111 acre farm in East Skowhegan. 40 acres tillage, 30 acres pasture, 40 acres hardwood and lumber. 3 miles to school, churches and stores. Near Oak Pond. Buildings were torn down. Nice granite cellar on place suitable for rebuilding. Plenty of lumber. Property on gravel road 1 mile from black road. Price \$1,000.

No. 196. 115 acre farm on Middle road to Waterville. 35 acres tillage, 25 acres pasture, 25 acres hardwood, 30 acres lumber. 5½ miles to school, churches. 3 miles to shipping point and stores. 250 apple trees. Few pear and plum trees. 9 room house, ell story and half, long shed, barn 44 x 50, good cellar. Trout brook passes through lower end of farm. Telephone and run-

ning water available. Especially adapted for general farming. Price \$3,300. Some farming implements.

No. 197. 297 acre farm in Norridgewock. 100 acres tillage, 75 acres pasture, 50 acres hardwood, 72 acres lumber. 1½ mile to school, churches stores, shipping point. Few fruit trees. 2 story house with good cellar, stable. Barn 40 x 60, tieup for 20 head cattle, good basement. Cream room. Garage, storehouse. Telephone and running water. Property on gravel road. Especially adapted for general farming. Price \$4,000. Terms, ½ down.

No. 198. 105 acre farm on road to Athens. 80 acres tillage, hardwood and lumber, 25 acres pasture. ¾ mile to school, churches. 5 miles to shipping point and stores. 4 miles to Lake Wesserunnett. 75 apple trees. House and shed connected. Barn short distance from house. Brook runs across field. Telephone available. Spring water. Property on dirt road. Especially adapted for lumber and general farming. Price \$2,000.

No. 199. 80 acre farm in Madison. 25 acres tillage, remainder in pasture, hardwood and lumber. 1½ mile to school and churches. 2 miles to stores. 1½ mile to Lake Wesserunnett. House and ell. Shed. Barn, henhouse and hoghouse connected to barn. Water in sink. Brook runs across farm. Telephone available. Especially adapted for dairying. Price \$1,400.

No. 200. 160 acre farm in Norridgewock on Madison State road. 90 acres tillage, 40 acres pasture, 30 acres wood and lumber. 2 miles to school, churches, shipping point and stores. 11 room house with bathroom, 3 barns, tieup 15 head cattle, garage, icehouse, 2 woodsheds, henhouse, corn house. Running water in cow barn. Especially adapted for corn, potatoes. Price \$3,500. Terms, \$1,400 cash, balance on mortgage.

No. 201. 42 acre farm on River Road in Anson. 12 acres tillage, 30 acres pasture. 1½ mile to school, churches and stores. House in good condition with hot and cold water, electric lights, furnace heat. Large shed. New barn 28 x 32, 2 large henhouses, city water. Property on black road. Especially adapted for general farming. Price \$3,200.

No. 202. 50 acre farm in Athens. 12 acres tillage, 12 acres pasture, 12 acres hardwood, 14 acres lumber. 1 mile to school, churches and stores. 3 miles to Great Moose Pond. House and large barn. Telephone and electricity available. Well and spring water. On gravel road Route 150. Price \$800. Terms, ½ down.

No. 203. House and lot in Athens village. House, shed and 2 car garage, all in very good repair. Telephone, electricity. Pump in sink. Property on gravel road Route 150. Price \$1,200. Terms, ½ down, balance easy terms.

No. 204. 120 acre farm in North Madison on Route 147. 40 acres tillage, 40 acres pasture, 10 acres hardwood, 30 acres lumber. 3 miles to Lake Wesserunnett. 1 mile to school, 5 miles to churches, 6 miles to shipping point and stores. 600 apple trees, also few berries. 5 room bungalow with bathroom. 4 poultry buildings, 1 hoghouse. Cow stable. Telephone and running water. Property on tar road. Especially adapted for general farming and orcharding. Price \$2,500. Terms, \$1,000 down, balance mortgage.

No. 205. 175 acre farm in Norridgewock. 75 acres tillage, 100 acres pasture, hardwood and lumber. 1 mile to school, shipping point and stores. ¼ mile to churches. 14 room house, fireplace. 150 ft. barn, ties 40 head. 2 large silos, double garage, dairy house, henhouse 50 x 12. Carriage house. Telephone and electricity. Property on gravel road ¼ mile to State road 201. Especially adapted for general crops. Price \$5,000. Terms, \$2,000 cash, the rest in land bank.

No. 206. 140 acre farm in Cornville on East Ridge road. 40 acres tillage, 20 acres pasture, remainder in hardwood and lumber. $\frac{3}{4}$ mile to school, 2 miles to churches and stores, $\frac{1}{4}$ mile from Wesserunnett Stream. House, barn and garage. Telephone available. Well water. Property on dirt road. Especially adapted for dairy farming, fruit and orcharding. Price \$2,000. Terms, \$1,000 down, balance can be arranged.

No. 207. 134 acre farm $2\frac{1}{2}$ miles from Norridgecock on the Waterville road. 50 acres tillage, 30 acres pasture, remainder hardwood and lumber. $2\frac{1}{2}$ miles to school, churches, shipping point and stores. 10 room house with piazza, shed, stable 36 x 36, that connects house and barn. Silo. Cellar under stable and barn. 2 car garage and henhouse. Telephone available. Running water in house and stable. Property on gravel road. Especially adapted for potato raising. Price \$2,400. Terms, \$1,000 down.

No. 208. 115 acre farm in Pittsfield. 40 acres tillage, 30 acres pasture, remainder in hardwood and lumber. School, churches, shipping point and stores nearby. River borders farm. Few fruit trees and berries. 2 story house, barn 40 x 50, icehouse, tool house, garage, 2 brooder houses. Telephone and electricity. City water. Property on gravel road. Especially adapted for dairying market gardening. Price \$5,000. Terms, \$2,000 cash, balance terms.

No. 209. 125 acre farm in Pittsfield. 40 acres tillage, remainder in pasture and wood lot. School, churches and shipping point nearby. $2\frac{1}{2}$ story house with piazza, 2 bathrooms. Garage, large stable connected. Barn. Telephone, electricity and running water. Property on State highway. Especially adapted for farming or tourist business. Price \$7,500.

No. 210. 100 acre farm in New Portland. 15 acres tillage, remainder in pasture and wood lot. $\frac{1}{2}$ mile to school, 3 miles to churches and stores, 8 miles to shipping point. 800 apple trees. Few other fruit trees. House, piazza, cellar under house and piazza. Barn. Telephone, running water. Especially adapted for orcharding, small fruits and market gardening. Price \$2,500. Terms, \$500 down, rest on mortgage. Includes farming tools.

No. 211. 300 acre farm 1 mile west of Cambridge. 100 acres in tillage, 90 acres pasture, 75 acres hardwood, 35 acres lumber. 1 mile to school, churches and stores. 5 miles to shipping point. Stream and pond near. $1\frac{1}{2}$ story house, ell connects house and barn 44 x 112, cement basement. Good drilled well. Telephone. Property on improved road. Especially adapted for stock raising. Price on application.

No. 212. 206 acre farm in Starks. 62 acres tillage, 81 acres pasture, 63 acres wood and lumber. School nearby. 3 miles to churches and stores, 5 miles to shipping point. Few apple trees. $1\frac{1}{2}$ story house, piazza. Another set of buildings connected with the farm suitable for hired help. Barn equipped with milking machine, power separator. Telephone, electricity and running water. Especially adapted for corn, potatoes and sheep raising. Price \$4,500.

WALDO COUNTY

No. 213. 80 acre farm in Montville. 20 acres tillage, 10 acres pasture, 50 acres lumber. 2 miles to school and stores, 4 miles to churches, 10 miles to shipping point. Lake at back of farm. Few fruit trees and berries. 1 small shop. Good location for buildings. Telephone. Property on gravel road. Especially adapted for general farming, poultry raising. Price \$500. Terms, $\frac{1}{2}$ down, balance on mortgage.

No. 214. 100 acre farm in Union. 40 acres tillage, 20 acres pasture, 40 acres hardwood. 2 miles to school, churches, stores. 8 miles to shipping point. Borders river and good fishing and duck hunting. Few apple trees. House and barn connected by ell. Barn 60 x 40. Pump. Property $\frac{1}{4}$ mile from State road. Especially adapted for potatoes, grain, corn, etc. Price \$2,500. Terms, \$500 down, balance easy terms.

No. 215. 60 acre farm in Jackson. 30 acres tillage, 25 acres pasture, remainder in hardwood and lumber. 2 miles to school, churches and stores. 7 miles to shipping point. 700 apple trees. House and barn with several outbuildings. Telephone. Running water in house and barn. Property just off State road. Especially adapted for general farming. Price \$1,300. Terms, $\frac{1}{2}$ down.

No. 216. 50 acre farm in Burnham. 20 acres tillage, 30 acres pasture. $\frac{1}{4}$ mile to school. 3 miles to churches, shipping point and stores. Few fruit trees. 7 room house, woodshed, and barn all connected, henhouse, deep cellar. Spring watered pasture. Telephone available. 2 wells. Especially adapted for general farming and potato raising. Price \$2,000.

No. 217. 130 acre farm in Montville. 20 acres tillage, 40 acres pasture, 20 acres hardwood, 50 acres woodlot. 3 miles to school and stores, 4 miles to churches. 1 mile to lake. Few apple trees. $1\frac{1}{2}$ story house and ell, also milk room, pump in kitchen. 32 ft. barn with room for 11 head cattle, separate stable with room for 3 horses, woodshed connecting house and barn. Telephone. Especially adapted for general farming or dairying. Price \$2,500. Terms, \$1,000 down, balance in first mortgage.

No. 218. 80 acre farm in Searsmont on Belmont Corner road to Belfast. 20 acres tillage, 20 acres pasture, 20 acres hardwood and 20 acres meadow. 1 mile to school, churches and stores. 9 miles to shipping point. $\frac{1}{2}$ mile to good lake. 8 room house, shed, carriage house, 60 ft. barn. Newly drilled well for barn, also new piazza, garage and icehouse. Telephone. Pump in house and barn. Property on State road. Especially adapted for corn, potatoes, garden truck. Price \$2,000. Terms, $\frac{1}{2}$ down, rest mortgage.

No. 219. 300 acre farm in Searsport. 60 acres tillage, 50 acres pasture, 100 acres hardwood, 125 acres lumber. 2 miles to school, 5 miles to churches, shipping point and stores. $1\frac{1}{2}$ mile to Half Moon Lake, 4 miles to Swan Lake. 300 apple trees, few plums and berries. $1\frac{1}{2}$ story house and ell, granite foundation, running spring water piped to kitchen and bathroom, both have hot water. 2 large barns, henhouse, garage, icehouse, 2 woodsheds, sheep shed, carriage house and shop. Telephone available. Especially adapted for general farming. Price \$8,500. Includes stock and machinery.

WASHINGTON COUNTY

No. 220. 100 acre farm in Marshfield. 25 acres tillage, 7 acres pasture, 32 acres hardwood, 30 acres lumber, 6 acres improved blueberry land. 1 mile to school, churches, shipping point and stores. 7 miles to Bog Lake. $1\frac{1}{2}$ story house, hardwood floors, running water, both hot and cold, bath, 2 furnaces, cement cellar, shed and barn connected. Telephone and electricity. Property on improved gravel road. Especially adapted for poultry and dairy farm. Price \$5,000. Terms. Includes 14 sheep, 4 lambs.

YORK COUNTY

No. 221. 40 acre farm in South Berwick. 3 miles to school, shipping point and stores. $\frac{1}{2}$ mile to church. 20 room house, steam heat, running water in house and barn. Large barn of

wooden frame construction, garage and several outbuildings. Telephone and electricity. Especially adapted for dairying and general farming. Price \$4,000. Terms, \$1,000 down and balance on mortgage.

No. 222. 98 acre farm in South Berwick. 90 acres tillage, 8 acres pasture. $\frac{1}{8}$ mile from school, shipping point and stores. 1 mile to churches. 2 story brick house in good repair. Barn of wooden frame construction, granite foundation. Telephone, electricity and running water. Property on State road. Especially adapted for dairying. Price \$5,500. Terms, \$1,500 down, balance on mortgage.

No. 223. 10 acre farm in West Agamenticus near Cape Neddick. 9 acres tillage. $\frac{1}{2}$ mile to school and churches, 3 miles to shipping point and stores. Small orchard. No buildings. Have been torn down. Good cellar. Price \$900.

No. 224. 200 acre farm in West Newfield. 40 acres tillage, 160 acres pasture, hardwood and lumber. 2 miles to school and churches. $3\frac{1}{2}$ miles to shipping point. Stores nearby. Few fruit trees. 12 room Colonial house. 102 ft. barn with silo. Garage for 4 cars. Property on country road. Especially adapted for poultry or dairying and orcharding. Price \$3,500. Terms.

No. 225. 45 acre farm in Wells. 15 acres tillage, 10 acres pasture, 15 acres hardwood. $\frac{1}{2}$ mile to school, churches, etc. $\frac{1}{4}$ mile to Wells Beach. No buildings. Trout brook runs through

woods. Never failing spring of excellent water. $\frac{3}{4}$ mile frontage. Property on tarvia road. Especially adapted for farming and vegetable garden. Price \$2,000.

No. 226. 150 acre farm in Buxton. 80 acres tillage, 50 acres pasture, 20 acres hardwood. 1 mile to school, churches and stores. 3 miles to shipping point. 2 trout brooks through land. Few fruit trees. 10 room house. Barn 74 x 44, tieup for 20 cows, water buckets installed, milking machines and hay carrier. 1 henhouse and brooder house, also icehouse. Telephone, electricity and running water. Third class road. Especially adapted for dairying and crops. Price \$5,500.

No. 227. 9 acre farm in Wells. 3 acres tillage, 6 acres hardwood. 2 miles to school, churches, shipping point and stores. 3 miles to Wells Beach. Strawberry and raspberry beds. 4 room cottage house. Place is furnished and furniture included. Small front and back porch. 2 henhouses, also pig house. Well water. Especially adapted for poultry or pig raising. Price \$750.

No. 228. 120 acre farm in York on Birch Hill road. 60 acres tillage, 60 acres pasture. $\frac{1}{4}$ mile to school, 3 miles to churches, 4 miles to stores, 6 miles to shipping point. Few apple trees. 2 story house and ell, shed, barn 40 x 72, woodshed, icehouse, henhouse. Telephone, electricity. Cistern water. Especially adapted for hay. Price \$5,000.

