

1987

Maine Guide to Hunting & Fishing 1987

Maine Publicity Bureau

Follow this and additional works at: https://digitalmaine.com/tourism_books

Recommended Citation

Maine Publicity Bureau, "Maine Guide to Hunting & Fishing 1987" (1987). *Maine Tourism Books*. 40.
https://digitalmaine.com/tourism_books/40

This Text is brought to you for free and open access by the Economic and Community Development at Digital Maine. It has been accepted for inclusion in Maine Tourism Books by an authorized administrator of Digital Maine. For more information, please contact statedocs@maine.gov.

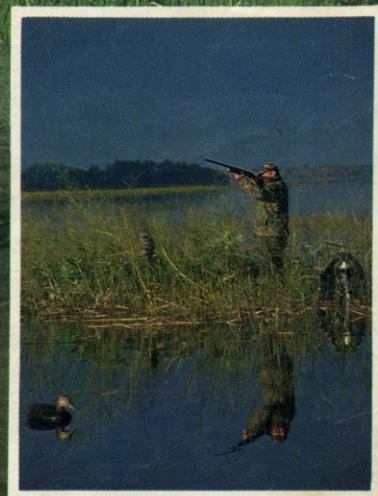
Find Something New in New England

MAINE

GUIDE TO HUNTING AND FISHING



Master copy

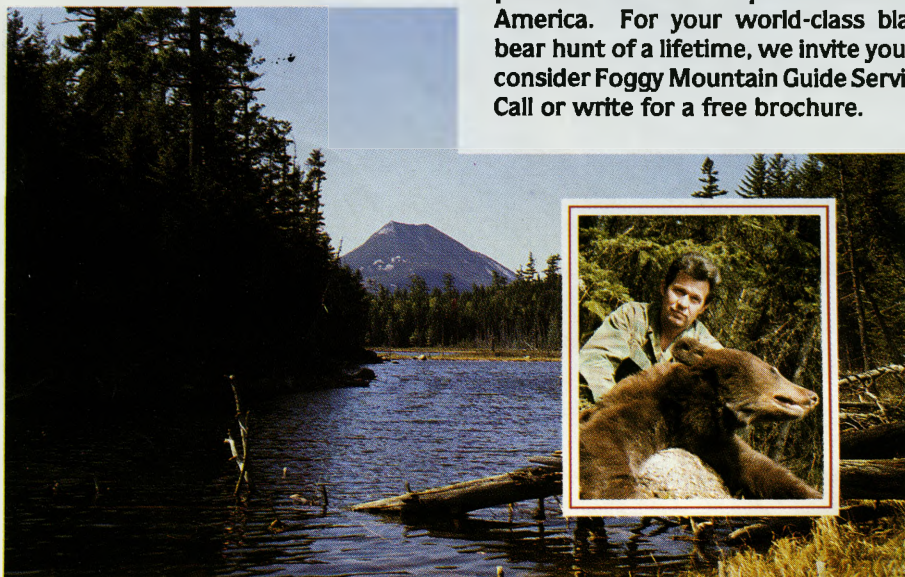


An Official Publication of the Maine Publicity Bureau, Inc.

When the World Wants Black Bear, they come to **FOGGY MOUNTAIN®**



From South America to South Africa, from Australia to Europe and the British Isles, when world-class hunters seek trophy black bear they make the same choice top-shelf American and Canadian hunters do year after year. They choose Foggy Mountain Guide Service - consistently the most productive black bear operation in North America. For your world-class black bear hunt of a lifetime, we invite you to consider Foggy Mountain Guide Service. Call or write for a free brochure.



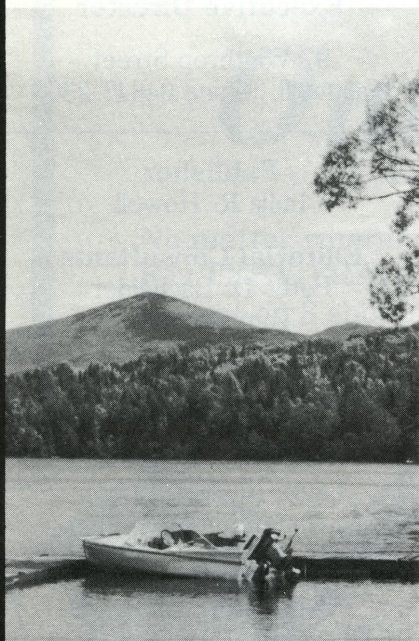
FOGGY MOUNTAIN GUIDE SERVICE®
Wayne A. Bosowicz
Master Guide

RFD #2 Box 103 Dover-Foxcroft, Maine 04426 (207) 564-3404



NORTHERN PRIDE LODGE & CAMPGROUND

*on first Roach Pond
at the headwaters of
Maine's famous Roach River*

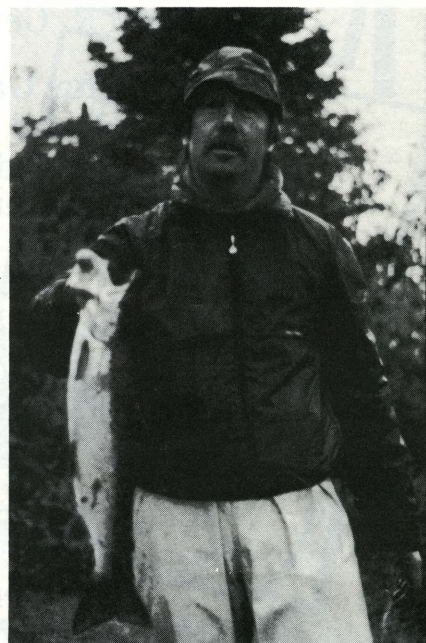


Remote fly &
spinfishing for
salmon, brook trout
& lake trout

Black bear &
Whitetail
deer hunts

Complete
guide service

Excellent
dining &
accommodations



Randy Richard

Registered Maine Guide-Outfitter

Star Rt. 76, Box 588G

Kokadjo, Maine 04441

(207) 695-2890

"We take pride in what we do"



TABLE OF CONTENTS

- 4 **The Maine Sporting Experience**
By David R. Getchell, Sr.
- 5 **Hunting for Game — Big & Small**
Techniques and tips for hunting deer,
bear, moose and small game
By David R. Getchell, Sr.
- 7 **Map of Maine's 1986 Deer Kill**
- 8 **Wetting a Line in Maine**
A Statewide guide to freshwater
species and techniques
By David R. Getchell, Sr.
- 10 **Maine's Fishing Regions**
Department of Fish & Wildlife
By Tom Shoener
- 12 **Saltwater Fishing**
A guide to deep-sea and near shore
fishing opportunities
By Barry Gibson
- 54 **Guide to Moose Watching**
By Tom Shoener
- 56 **Index to Advertisers**

Regional Travel Information

- 15 Western Maine
- 24 Central Maine
- 36 Northern Maine



MAINE

GUIDE TO HUNTING AND FISHING

*A publication of
The Maine Publicity Bureau, Inc.*

John Dix Druce
President

George Stobie
Executive Director

97 Winthrop Street
Hallowell, Maine 04347-2300

Publisher
India R. Howell

Editorial Consultants
Peter D. Bachelder
Tom Shoener

Art Director
Janet Patterson

Art Assistants
Laura Beth Patterson
Jan Zimmermann

**Advertising and
Production Manager**
Elizabeth M.W. Rodrigue

Advertising Director
Wayne Hendsbee
(207) 289-2423

Advertising Sales
Stanley D. Catell
(207) 763-3875

The **Maine Guide to Hunting and Fishing** is published annually by the Maine Publicity Bureau, Inc., a non-profit corporation for the promotion of Maine's tourism industry. We welcome submissions of both writing and photography samples. Please mark all materials clearly with name and address. Send all submissions to India Howell, The Maine Publicity Bureau, 97 Winthrop St., Hallowell, ME 04347-2300. The Maine Publicity Bureau does not accept responsibility for unsolicited materials.

Cover photos by Tom Carbone, Courtesy of the Maine Department of Fish and Wildlife.



The Best for the Outdoors!

No matter where you're going - head first to the **KITTERY TRADING POST**. With nearly 30,000 sq. feet on 3 shopping levels, you can outfit the whole family with name brand Clothing, Footwear, Firearms & Sports Equipment.

***ALL at the
Best Possible
Prices.***



**NON-RESIDENT
LICENSES**



KITTERY TRADING POST

OPEN DAILY 9 - 9, SUNDAYS 10 - 6

ROUTE 1 KITTERY, MAINE 207 439-2700



DEPARTMENT OF
**INLAND FISHERIES
& WILDLIFE**

284 STATE STREET
AUGUSTA, MAINE 04333

John R. McKernan, Jr.
Governor

William J. Vail
Commissioner

Dear Sportmen,

Welcome to millions of acres of excellent wildlife habitat — welcome to thousands of ponds, lakes, rivers, and streams — welcome to the great State of Maine, which affords unparalleled opportunities to view and appreciate the immense variety which nature's outdoors has to offer.

If you are considering a hunting or fishing trip in Maine, or have already decided to spend some time with us, it is my hope that this booklet will help you plan, and fulfill, your Maine outdoors experience. But please check out some additional printed material: the appropriate regulations booklet(s) for the activity or activities you're planning. They're free, and readily available, and they can start you off on the right foot in the Maine woods.

In terms of outdoor recreation lands, Maine is in the minority in this one respect: the vast majority of the state is privately owned, and it is only through the cooperation of the owners of private land that Maine sportsmen and women are able to pursue their outdoor activities.

Maine residents value their privacy, but are willing and eager to share their lands with responsible, caring outdoor enthusiasts. This vital public access will remain open only as long as we refuse to take it for granted. Remember: we are the visitors, and must respect the wishes of our hosts.

Recreationists and Maine landowners have enjoyed a close, smooth operating relationship for many, many years. It is a relationship that is vital to maintain, for only through this arrangement will our children and grandchildren be able to enjoy the Maine outdoors as we do today.

Welcome to the Pine Tree State. If any representatives of the Maine Fish and Wildlife Department — biologists, members of our famous Warden Service, or personnel in any of our headquarters offices around the state — can help, please don't hesitate to ask. We're here to serve you.

Thank you for choosing Maine as your outdoor recreation spot.

And good luck!!

Sincerely,

William J. Vail
Commissioner



The Maine Sporting Experience

by David R. Getchell, Sr.

Maine is tucked off by itself in relation to other states in the union, and has thus managed to retain unspoiled hunting and fishing territory of high quality. But while wildlife and fish are plentiful here, timing is the real key to success.

For example, freshwater fishing for cold-water species like brook trout and landlocked salmon is best in May, June, and September. Bass, pickerel, and perch, the warm-water species, are active during the summer months. And while big game (deer, bear, and moose) hunting is strictly an autumn sport, the seasons for some small game, birds, and ducks extend into the winter or year round.

This guide will provide you with answers to many of your questions about hunting and fishing in the state, but the details and rules involved are best gleaned from the official rules and regulations pamphlets provided by the Maine Department of Fish & Wildlife, 284 State St., Station #41, Augusta, ME 04330. Our advice is: Don't hunt or fish *at all* without first checking the rulebook.

Newcomers to Maine can speed their success by chatting with knowledgeable sporting camp owners, innkeepers, and the personnel at outdoor sporting shops, or by hiring a Registered Maine Guide. Some Guides work directly with the various sporting camps, so be sure to ask about hiring one when you make your lodgings reservations. You can also hire a Guide directly. Most will provide a boat and motor, and basic camping gear, as well as extensive knowledge bred of

years of exploration in their region. For more information, contact the Maine Professional Guides Association, PO Box 591, Ellsworth, ME 04605.

If you want to camp during your stay, there are dozens of private campgrounds, several state parks, and scores of free campsites maintained by the Maine Forest Service on the state's lakes and ponds.

If you plan a trip to northern Maine, be advised that the great roadless "wilderness" that appears on road maps is neither roadless nor a real wilderness. Rather, it is a vast forest farm, laced with gravel roads, lumber camps, and road gates. Much of this country is available for public use, but be prepared for questions about your travel plans and to pay modest gate fees at checkpoints throughout this domain. For further information, write North Maine Woods, PO Box 421, Ashland, ME 04732.

Elsewhere in the state, most shoreland and woods are privately owned. Though some of this land is posted against trespassing, much is not. The Maine Department of Fisheries & Wildlife advises: "It is unlawful to trespass on private property after having been advised not to do so by the property owner *either* by word or mouth or by conspicuously posted signs. The department encourages sportsmen to seek owner permission *before entering* upon private property." Good advice for all of us to follow, if we want Maine's extensive private lands to remain open to the public for hunting and fishing.

Hunting for Game — Big and Small

by David R. Getchell, Sr.

Big Game

Big game hunting in Maine during the 1987-88 hunting season should continue at the same good levels it has enjoyed in recent years. Stocks of moose and black bear are high, and deer are increasing, thanks to good management and moderate winters.

The 1987 deer season will run from Nov. 2 through Nov. 28, with Oct. 31 being set aside for Maine residents only. The special muzzle loader season opens after the regular deer season and will run from Nov. 30 to Dec. 5.

The permit system started last year will be in effect again this fall. It establishes a statewide bucks-only hunting season for four weeks in November for all hunters. However, anyone holding a current hunting license may apply for an Any-Deer Permit in any one of 16 management districts. If selected to receive a permit they can then take either a buck or doe deer in that district, or they can hunt for bucks-only anywhere in the state. The yearly limit remains one deer per hunter, regardless of animal's sex or the season in which it is taken.

Application blanks for Any-Deer Permits were available throughout the state before July 1 with the period closing in early August. The permit applications are free. A public drawing to select permittees was to be held in mid-September and winners notified about Oct. 1.

Nonresident hunters who held a 1986 license to hunt deer in Maine received an Any-Deer application by direct mail from the Maine Department of Fish & Wildlife with no request needed. Nonresident hunters wanting an Any-Deer Permit application for 1988 may request one from the department's office (Station 41, Augusta, ME 04333).

District 17, containing parts of coastal Hancock and Washington counties, will not have any permits allocated to it in 1987 due to concerns about low deer population in that area. All hunters will be restricted to bucks-only hunting in that area.

The season on black bear will run from September 1 to November 30. Research has shown that black bear numbers are higher than previously believed, with the total population in excess of 18,000. In 1986, a total of 1,954 bear were taken, the majority of which were trapped or shot in the northern part of Maine. Baiting tech-



niques account for most of the bears taken early in the season, while deer hunters take many bears in November.

The moose season has been set for the week of October 19-24. Maine moose are

hunted under a permit system based on a lottery conducted each spring. Nine hundred permits go to Maine residents and 100 to nonresident hunters. Recent counts have shown that the northern Maine moose pop-

ulation of more than 18,000 works out to a density of three animals per square mile — among the highest in North America. The area for moose hunting includes lands north of a line formed by highway routes 16, 6, 2, 178 and 9.

Small Game

Rabbits, gray squirrels, raccoons, and other small game flourish in the state's fields and forests, but hunting for them is quite light. This is good news for the small-game hunter, for it means little competition during the relatively long seasons (as much as six months for cottontail rabbits and snowshoe hares).

Hares and raccoons are found statewide; the former are common in the hedgerows and softwood growth in the south, and in the evergreen thickets in the north country. Raccoons are one of only two Maine animals that can be hunted at night, the other being the coyote. A special night season has been set for coyotes in January, February, and March, check the rulebook for details. Otherwise, there is no closed season on coyotes.

A two-month season on gray squirrels provides plenty of opportunity for hunters seeking these elusive animals. Grays are plentiful in the hardwood forests of southern Maine, especially in stands of beech and oak. Note that it is strictly illegal to hunt squirrels in parks, or the built-up areas of towns and cities.

Woodchucks, porcupines, and red squirrels may be hunted year round.

Birds and Ducks: Partridge (ruffed grouse) and woodcock are the principal upland gamebirds in Maine. There are a few pheasants in the southern part of the state and there is a very limited spring season for wild turkey in York County based on a permit system. Eight turkeys were killed by hunters this year.

Grouse-hunting methods differ considerably between the northern and southern areas. The traditional method, shooting over a dog, is most commonly used in the south. By contrast, most partridge taken in the north are found by hunters walking the woods roads. Most drive along these roads until birds are spotted, then get out of their vehicle, load up, and hunt the area on foot. State law (and common sense) rule against carrying a loaded gun in a vehicle, and it is *always* illegal to actually hunt from a vehicle or from a paved road. Sunday hunting is also forbidden in Maine.

Woodcock are considered migratory birds, and thus come under both federal and state jurisdiction. Maine woodcock hunting was good in 1986. The federal government has set a daily limit of three birds in Maine with the season running from October 1 to November 14. Pheasants are no longer



1987 Maine Hunting Seasons

Effective through March 31, 1988.

This is not a legal presentation.

See hunting regulations booklet for full details.

	First Day	Last Day
Deer: Firearms season	Nov. 2	Nov. 28
Maine Resident only day	Oct. 31	
Archery	Oct. 1	Oct. 31
Muzzleloader	Nov. 30	Dec. 5
Bear	Sept. 1	Nov. 30
Moose (by special permit only)	Oct. 19	Oct. 24
Ruffed Grouse (wildlife management units 1 & 2)	Oct. 1	Nov. 30
Ruffed Grouse (wildlife management units 3-8)	Oct. 1	Dec. 10
Pheasant (wildlife management units 1 & 2)	Oct. 1	Nov. 30
Pheasant (wildlife management units 3-8)	Oct. 1	Dec. 8
Woodcock (1986 dates)	Oct. 1	Nov. 14

Hunting laws and season dates for small game may be obtained from the Department of Fish and Wildlife or through the Maine hunting regulations pamphlet that is available at all license dealers and through your local Maine Game warden.

Please be sure to confirm 1987 laws and limits before you go hunting.

common in Maine, and a special stamp is required should you wish to hunt for them.

Duck hunting seasons are also based on federal and state regulations. The special rulebook pertaining to species and seasons is issued in September. A state duck stamp and a federal one, in addition to the regular state hunting license are required.

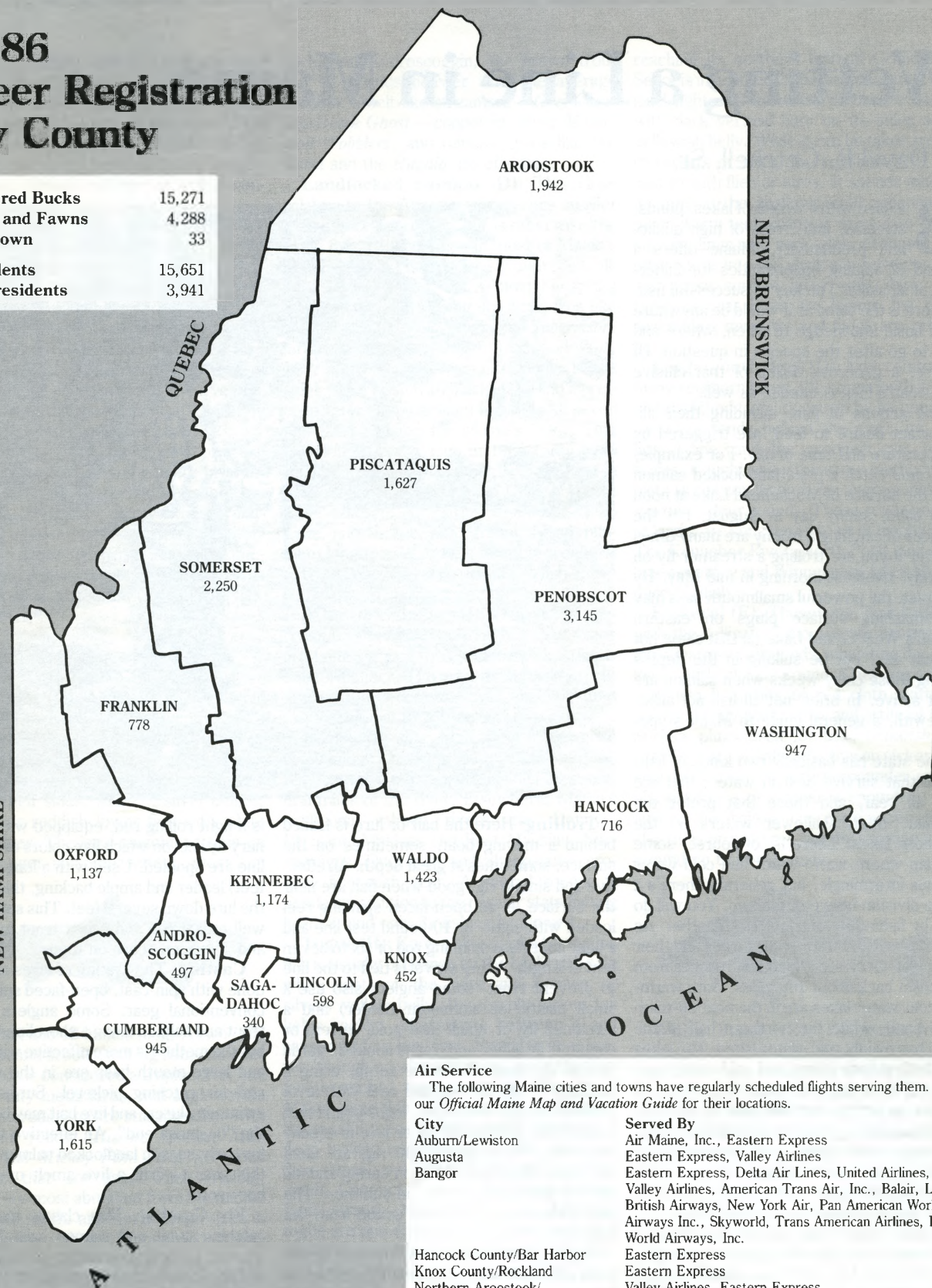
While the black duck situation appears to have stabilized, it remains very critical in northeast, so hunting for this popular duck is strictly limited. Wood duck have taken on some of the pressure that used to be on the black duck, but there is now concern that the woodies may be taking a beating. Many hunters are thus turning away from marsh ducks and concentrating instead on Canada geese and sea ducks, both of which are in good supply.

As we went to press, we were told that there was strong support for statewide use of steel shot for ducks this season. The move would be well in advance of the 1991 deadline set by the federal government. However, a state source said it was more likely that steel shot would be required only in coastal counties in 1987.

1986 Deer Registration By County

Antlered Bucks	15,271
Does and Fawns	4,288
Unknown	33
Residents	15,651
Non-residents	3,941

NEW HAMPSHIRE



Air Service

The following Maine cities and towns have regularly scheduled flights serving them. See our *Official Maine Map and Vacation Guide* for their locations.

City

Auburn/Lewiston
Augusta
Bangor

Hancock County/Bar Harbor
Knox County/Rockland
Northern Aroostook/
Frenchville
Northern Maine Regional/
Presque Isle
Portland

Waterville

Served By

Air Maine, Inc., Eastern Express
Eastern Express, Valley Airlines
Eastern Express, Delta Air Lines, United Airlines,
Valley Airlines, American Trans Air, Inc., Balair, Ltd.,
British Airways, New York Air, Pan American World
Airways Inc., Skyworld, Trans American Airlines, Inc.,
World Airways, Inc.

Eastern Express
Eastern Express
Valley Airlines, Eastern Express

Eastern Express, Valley Airlines

Delta Airlines, United Airlines, Presidential Airlines,
US Air, Inc. Eastern Express, Continental
Valley Airlines
Eastern Express, Telford Aviation Inc.

Wetting a Line in Maine

by David R. Getchell, Sr.

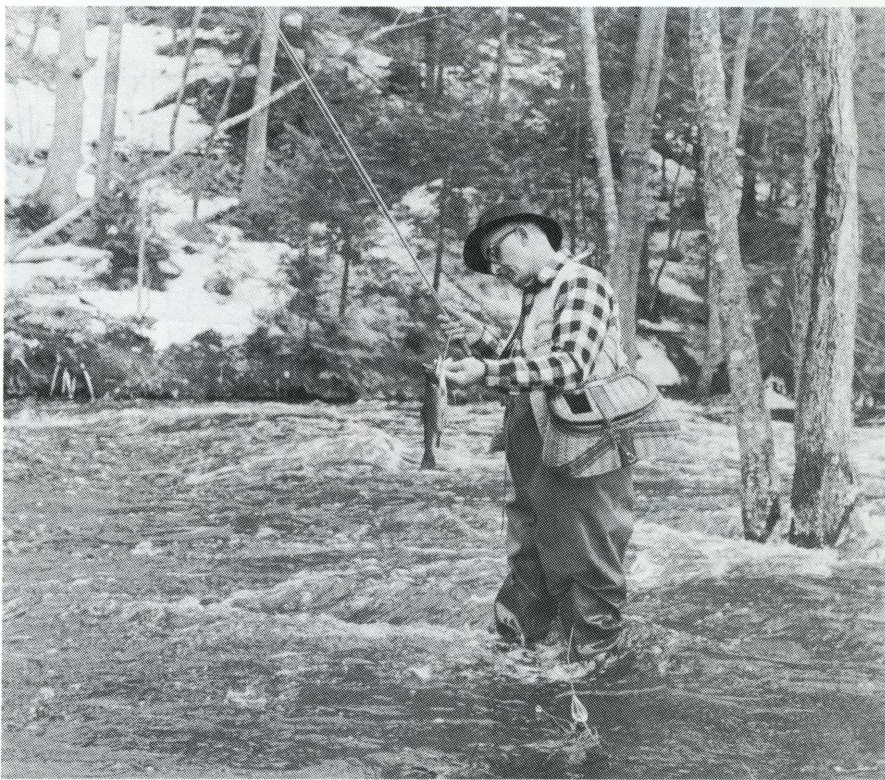
Blessed with a wealth of lakes, ponds, streams, and rivers of high quality and productivity, Maine offers a myriad of angling opportunities for fishermen of all skills. The key to successful fishing here is the same as it would be anywhere — a basic knowledge of when, where and how to go after the species in question. Of course, a generous dollop of that elusive fisherman's luck is needed as well.

The actions of fish, including their all-important desire to feed, are triggered by temperature and time of day. For example, you *could* catch a prize land-locked salmon near the surface of Moosehead Lake at noon on a calm, sunny day in August, but the chances of catching a trophy are many times greater if you are trolling a streamer fly on a windy, overcast morning in mid May. By contrast, the powerful smallmouth bass may be smashing surface plugs on eastern Maine's West Grand Lake on that same hot August day, but be sulking in the depths during those chilly weeks when salmon are most active. In brief, not all fish act alike. Herewith, a general guide to Maine's species.

The state has basically two kinds of fish: those that survive best in waters that are cold all year, and those that prefer the warmer, often shallower waters on the southern lakes. There is, of course, some overlap where warm-water and cold-water species intermingle, but generally there's a sharp division between the two. You will do best by fishing for one kind or the other. As a rule, you'll find warm-water lakes and their particular species in a band that reaches from the coast back about 100 miles. Both warm- and cold-water lakes are in the next 50-mile-wide band, while the northern half of the state has mainly cold-water lakes. The lakes that harbor both warm- and cold-water species will have the cold-water fish near their surface in spring and fall, and in the cold depths during summer. In the warm months, the warm-water species can be found in the shallows and medium depths. A note of interest: fall fishing for cold-water species is much more chancy than spring fishing.

A warm September means that the fish will stay in the depths throughout the month, and all fishing for cold-water species closes on September 30. Luckily, many southern Maine lakes remain open for warm-water angling until the end of October, check the rule books for specifics.

Fishing methods vary with the waters and the species, but a few time-tested methods include:



Trolling: Here the bait or lure is trailed behind a moving boat, sometimes on the surface, sometimes at great depth. An effective and simple rig, good when fish are near the surface, is an open-faced spinning reel loaded with eight- or 10-pound test line and a light fiberglass spinning rod of six to seven feet in length. A tiny swivel is tied to the line to prevent twist (some anglers also use a small plastic or aluminum rudder) and a streamer fly or small lure gold, silver, or copper is attached and trailed about 25 yards behind the boat. A similar setup, using a medium-weight fly rod and reel with level sinking line, 10- or 15-foot, eight-pound test leader, and a streamer fly or lure is equally adequate. These lightweight rigs are used for brook trout and salmon in spring and fall and for bass and pickerel in summer. The light rods assure the most action from the fish.

Togue (lake trout), salmon, and brook trout are taken with deep gear in summer by fishermen using trolling rods, lead-core or wire lines, and flashing lures or live bait. Unfortunately, the extra weight needed to get the lure down to the proper depth may dampen the action of a hooked fish. An in-between rig that preserves that action and will take cold-water fish much of the season

is a light rolling rod, equipped with an ordinary fly reel on which five colors of lead-core line are spooled. Used with a long (20 or 30 feet) leader and ample backing, this will take the lure down several feet. This setup works well on salmon and brook trout in summer and will often score on togue.

Casting: The casting of lures and bait is done with spin-cast, open-faced spinning, or conventional gear. Some anglers cast for trout and salmon along a shoreline in spring, but the method is more effective when small- and large-mouth bass are in the shallows, and for catching pickerel. Surface plugs, swimming lures, and live bait may be used on the "business end". An effective technique for early-season landlocked salmon is to use this gear to drift a live smelt over known hot-spots.

Fly Casting: This classic method for catching trout and salmon calls for a fair amount of skill, knowledge of fish habitat, and an ability to read the waters being fished.

Bobber Fishing: Similar to casting, this is one of the least expensive and simplest ways to catch many warm- and cold-water species. Needed is a rod, simple reel and line, a plastic or cork bobber, hooks, a few feet of monofilament leader, and perhaps a few lead sinkers. An angleworm or night

crawler is threaded onto the hook, the bobber is attached to the line to hold the hook at the desired depth, and the cast is made. Once the bobber bobs, the rod is lifted to set the hook and the catch is reeled in. This rig has been known to bring in much sought-after trout, salmon, and bass as well as sunfish and perch.

Maine's Department of Fish & Wildlife manages the fisheries in the state's seven regions. They are happy to supply information on where to find particular species within those regions, and their excellent Lake Survey sheets detail the presence and amount of game fish in a lake, as well as bait fish types, water depths, and the location of boat ramps. A catalog of these surveys is available from the department at 284 State St., Station #41, Augusta, ME 04333.

Following is a list of Maine's principal freshwater species, together with brief information on how, where, and when they can be caught. The letter in parentheses indicates how difficult each is to catch, but is only a guide. As any fisherman knows, sometimes you catch 'em, sometimes you don't. The letters designate Easy (E), Difficult (D), and Hard (H).

Cold-Water Species

Brook Trout (D): Abundant in clean, cold brooks and streams, and growing to large sizes in some ponds and lakes (where they are called squaretails), brook trout are lovely fish. They have dark, wavy-green backs, red spots on their sides, white or silver bellies, and pink or reddish lower fins with white leading edges. The legal minimum size is six inches (longer in some water), most run



between six and 12 inches long. A two- and one-half pound brookie is a big fish, one over four pounds is considered a trophy. Wet and dry flies, tiny metal lures, and anglerworms are common baits, as are streamer flies with red and/or yellow (*Barnes Special*, *Miss Sharon*, and *Mickey Finn* lures are good examples) that are used when trolling. Brookies are most abundant from the middle of the state north, and run to large sizes in the Rangeley lakes, Moosehead Lake, Pierce Pond, and The Roach River.

Brown Trout (H): Tougher to catch than brook or rainbow trout, browns are the choice for those experienced anglers seeking a challenge. Occasional to common in some of the colder lakes and streams (in the band extending 100 miles back from the coast), this fish runs a few inches longer than the brook trout. In lakes like Branch, Han-

cock, and Androscoggin, the brown trout can be pounds heavier than the average brookie. Smelt-like streamers—*Grey Ghost* and *Black Ghost*—copper or silver *Mooselook Wobblers*, and minnow lures like the *Rebel* and the *Rapala* are effective.

Landlocked Salmon (D): This close relative to the Atlantic salmon runs smaller than its ocean brother, but is otherwise the same fish. It is common in most of Maine's large lakes, but is notoriously unpredictable in its feeding habits. Taken mostly in spring by surface trollers using streamer flies like the *Grey Ghost*, *Nine-Three*, and *Supervisor*, lures like the *Super Duper*, *Mooselook Wobbler*, or *Rapala*, or live smelts, landlocks are sleek silvery fish with black spots and a preference for jumping when hooked. All seven fish that qualified for Maine's "One That Didn't Get Away" club in 1984 came from Rangeley Lake, but big fish are common in eastern Maine's East Grand Lake, the Fish River lakes in Aroostook County, Sebago Lake, and Grand Lake Stream. Legal minimum length is 14 inches, average weight is between one and three pounds. A fish of five pounds or more is a trophy.

Atlantic Salmon (H): One of the successful conservation stories of recent times in Maine's effort to resuscitate its Atlantic Salmon fishery. The prize exhibit in this program is the Penobscot River, once polluted and barren, but today one of the most prolific of salmon streams. Fishing on it was once confined to the famous Bangor Salmon Pool, but is now carried on successfully over several miles of the river. Elsewhere, Maine's traditional salmon rivers—the Dennys, Pleasant, Machias and East Machias, Naraguagus, Ducktrap, and Sheepscot—produce fish each year. A special license is needed in addition to the regular state fishing license, and only fly fishing is allowed.

Togue (H): Known also as lake trout, this fish is usually brownish on the back with pale white spots on the sides and a silver or silvery yellow belly. Its sharply forked tail helps anglers differentiate between it and salmon and brown trout. Partial to deep water (though occasionally taken near the surface in spring), togue run larger than most Maine game fish — as large as 20 pounds. Successful togue fishermen are masters of deep trolling techniques, and use streamer flies, lures, and live bait like suckers and smelt. Common in deep, cold lakes (Tunk, East Grand, Moosehead, Chamberlain), togue are one of the most popular targets of ice fishermen. Minimum length is 18 inches, and three pounds is an average size.

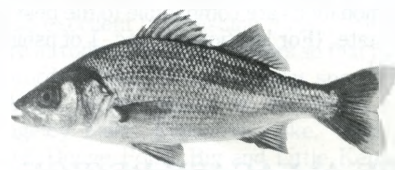
Warm Water Species

Smallmouth Bass (D): Maine is famous for its smallmouth waters, especially in the lakes and ponds "Down East" in Washington County. The fish is common in hundreds of ponds in the southern part of the state,

reaching its northern limit in Grand Lake Sebago in northern Penobscot County. This hard fighter is brownish or bronze backed with dark vertical bars on its sides and a yellowish belly. While it can be taken trolling streamers or lures, the smallmouth is best cast to with flies or lures. It spends much of its time in the shallows until midsummer, when warm temperatures drive it to cooler surroundings near rock piles. At night, bass often move into the shallows, however, and will strike surface lures after dark. The types of bass lures are legion, but those resembling minnows and frogs are reliable here.

Largemouth Bass (D): Now common in many southern lakes, the largemouth is best distinguished from its cousin by its upper lip (which extends behind the eye), its dark lateral line, and the greenish cast to its scales. Caught using the same methods and baits as the smallmouth, an average fish will run two to four pounds. Those seven pounds or larger are considered to be of trophy size. The Kennebec River, North Pond, and Cob-bosseecontee and Winnegance lakes all produce big fish.

Pickereel (E): These long, lean battlers, with the "alligator" mouths are common to most warm-water ponds, inhabiting the shallows nearly all year round. They are caught with live bait, bits of red cloth skittered across the lily pads, lures and artificial flies. Surface plugs used for bass (*Flatfish* and *Jitterbug*) are equally effective on pickereel. A smashing strike by a three-pounder on the placid surface of a pond is enough to give anyone the shakes. There are no length restrictions on pickereel, but the average fish is around one to two pounds.



White Perch (E): The world-record white perch came from Maine waters, and big humpies are common in scores of warm-water lakes. A fish weighing over a pound is big, with trophy fish being two pounds or more. These little fish more than make up in scrap for what they lack in size, however. They will hit worms, flies tiny jigs, little lures, and other small baits with abandon, especially if one finds a school of them. China Lake, Panther Pond, and other waters in central and southern Maine have some of the biggest specimens. There is no limit on white perch.

Yellow Perch and Sunfish (E): Anglerworms and tiny spinning lures are best for these plentiful fish. Scorned by many, but delicious in the pan, these fighting rascals offer the serious fisherman an excellent chance to practice on willing targets.

Maine's Fishing Waters

1

THE FISH RIVER REGION

(Salmon and trout)

This is one of the outstanding regions not only in Maine but in the entire country as well.

Salmon grow to remarkable size in this area and are taken not only in the lakes but also in the connecting thoroughfares. Trout also are both large and numerous throughout the region. Several of the lakes also contain togue.

The lakes in the Fish River chain proper are Long Lake, Mud Lake, Cross Lake, Square Lake, Eagle Lake, St. Froid Lake and Portage Lake.

Extending down almost into the Moosehead region are almost countless lakes, ponds, rivers and streams that afford fishing that surpasses the fondest dreams of the angler.

In August there is good stream fishing along the Fish River from Eagle Lake to Fort Kent. Both the Aroostook and Machias rivers offer good stream fishing for trout.

Situated far to the north, fish strike well longer in the season than is the case further south. Too, fall fishing begins earlier for the same climatic reason.

Greater numbers of sportsmen are visiting this region each year as word of the good fishing is becoming generally known.

Roads to this region are excellent. Accommodations are comparable to the best in the state. (For location see sec. 1 of fishing map.)

2

THE ALLAGASH REGION

(Trout, togue and salmon)

This is a region beloved by many anglers as it entails canoe trips into the wildland region. It taps the Allagash, St. John and East and West Branch of the Penobscot, waters all known as canoeing waters par excellence throughout the world.

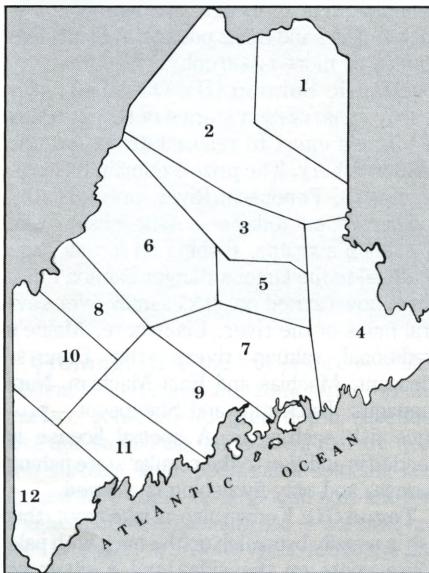
Angling opportunities in this region are virtually without number. Passing through this region, the angler fishes a number of different waters each day and so is continually visiting new scenes and meeting new conditions.

Some of the better known fishing spots in the region are at Canada Falls Deadwater on the West Branch; along the West Branch from Seboomook Dam to Pine Stream near Chesuncook Lake; in the streams leading into Allagash Lake, Eagle Lake, Chamber-

lain Lake, Churchill Lake, Umsaskis Lake, Chemquasabamticook (Ross) Lake and Long Lake.

There are literally hundreds of streams flowing into the fifty mile stretch of the Allagash from Long Pond to its mouth and also along the seventy miles of the St. John from the mouth of the Northwest Branch to the point where it joins the Allagash. Virtually all of these streams furnish as good stream fishing as can be found in the entire country.

The fact that this territory is more remote than any area in the eastern United States calls for special planning before visiting it. You may want to think seriously about hiring a guide. At the very least, you must plan on bringing with you all the supplies you will need during your stay there. There are a few



sporting camps in the region, or tenting out may be done at authorized campsites within the Allagash Wilderness Waterway or under the jurisdiction of the North Maine Woods, an organization of paper company and other landowners, headquartered in Ashland. (For location, see sec. 2 of fishing map.)

3

MOUNT KATAHDIN REGION

(Trout and salmon)

This magnificent region, dominated by Mount Katahdin, a wilderness peak a mile high, is one of the most ruggedly beautiful areas in the entire country.

In the region are some of the best trout waters in the United States. They are di-

vided between larger waters that are easily reached and smaller ones that are out of the way and, for that reason, have a charm of their own.

A great part of this region is a state park given to Maine by former Governor Percival Baxter to be maintained forever in its natural state as a rendezvous for anglers and other outdoor lovers.

The following are some of the larger waters in the area: Chesuncook Lake, Sourdunahunk Lake and Stream, Kidney Pond, Daicy Pond, Millinocket Lake, Shin Pond, Togue Pond, and Katahdin Lake.

Central points in this area are easily reached over good roads. Available accommodations include several sporting camps and campgrounds in and around Baster State Park. (For location see sec. 3 of fishing map.)

4

GRAND LAKES and SCHOODIC REGION

(Salmon, trout, togue, smallmouthed bass, pickerel, white perch)

A sporting kingdom in itself, this region defies description in anything short of an entire volume. It covers Washington County.

It is a region that somewhat resembles the Moosehead Region inasmuch as part of it is easily accessible while a still greater part is composed of wild lands that are a network of lakes, ponds, rivers, streams and brooks. Much of this territory is not fished extensively as yet, although fishing throughout the region is truly magnificent. The angler who wishes to "discover" new waters will find this area to his liking.

West Grand Lake is one of the original homes of the landlocked salmon and still offers good fishing for this species, as well as for smallmouthed bass and togue. Big Lake, the lake it empties into, is one of the best smallmouthed black bass waters in the world.

Among other waters in the area are Junior Lake, Sysladobsis, East and West Musquash Lakes, and a host of brooks and streams, including Grand Lake Stream located in the village of the same name.

A little to the south are the Meddybemps, Cathance Lake, Rocky Pond and numerous other lakes, ponds, brooks, rivers and streams. To the west are Niatous Lake and the Machias Lakes. To the north Spednic Lake, in the Schoodic Chain, is a 23 mile long body of water that is rated as one of the best bass lakes in existence. Eastern Grand

Lake, almost as long, is famed for its splendid salmon and togue fishing. Other waters in the locality afford the most excellent fishing.

It will be repeated that the vastness of this region defies adequate description in a booklet of this type. Only by visiting the area can the sportsman get an idea of its desirability and the excellent fishing it offers.

Fine hard surfaced roads lead to this region. Accommodations are of the usual fine type found in Maine and plentifully distributed. (For location see sec. 4 of fishing map.)

5 MILO-ENFIELD- LINCOLN REGION

(Salmon, trout, bass)

This region lies between the Moosehead region and the Grand Lake region.

Near Enfield, the angler will find Cold Stream Pond, one of the state's most beautiful bodies of water, and an excellent salmon and togue fishing center. A little over twenty miles away is Lake Nicasious, a fine salmon and bass lake. The region is dotted with numerous smaller ponds and many excellent streams.

From Milo, the angler is but a few miles from Schoodic Lake, a famed togue lake, Sebobeis Lake, Endless Lake and other lakes and streams that afford very good trout fishing.

Good accommodations are available in the region. Roads also are good. Guides are available throughout the region. (For location see sec. 5 of fishing map.)

6 MOOSEHEAD-JACKMAN REGION

(Salmon, trout and togue)

One must deal in superlatives in describing this region. Moosehead Lake, for example, is not only the largest lake in Maine but one of the largest bodies of fresh water wholly within one state in the country. It is forty miles long and twenty wide.

The whole region occupies almost as much territory as the entire state of Massachusetts. It is almost entirely salmon, trout and togue country.

Some of the more familiar waters in the far-flung area are: Brassua Lake, Long Pond, Big Wood Pond, Attean, Holeb Pond, Misery Pond, Moxie Pond, Lake Parlin, Lobster Lake, Ragged Lake, the Roach ponds, Lake Onawa, Sebec Lake, Indian Pond, Jo-Mary Lake, Sebobeis Lake, and Sebecook Lake. In addition, it contains hundreds of brooks, streams, and rivers including the Moose River and headwaters of

the Kennebec and Penobscot rivers.

Excellent roads lead to the central points in this region and numerous accommodations are located in the region. (For location see sec. 6 of fishing map.)

7 BANGOR REGION

(Salmon, brook trout, brown trout, togue, bass, pickerel)

On U.S. Route 1, between Bangor and Ellsworth, 28 miles away, are Phillips Lake, also known as Lucerne-in-Maine, Greene Lake, Branch Pond and Graham Lake. Grouped together, they afford excellent fishing for salmon, togue, brook trout, brown trout and pickerel.

Thirty miles from Ellsworth is Tunk Lake, and several other fine fishing waters.

On Route 9 from Bangor is Chemo Pond, Floods Pond, Beech Hill Pond, Molasses Pond, Webb Pond and numerous other smaller bodies of water affording excellent fishing for salmon, trout and bass.

On Route 15 from Bangor, in the vicinity of Bucksport, 18 miles away, is another group of excellent lakes including Toddy Pond and Lake Alamoosook, which afford excellent salmon, togue and trout fishing.

Finally, visitors to Mt. Desert Island and Acadia National Park—noted for spectacular mountain and sea scenery—will find good fishing for the common game fish species in the island's 20-odd lakes and ponds.

In fishing this region the sportsman can obtain excellent accommodations at the various lakes for in the small towns and cities in the vicinity. (For location see sec. 7 of fishing map.)

8 DEAD RIVER REGION

(Trout and salmon)

Lying in the northwest corner of the state on the historical line of the march of Benedict Arnold to Quebec is to be found a perfect network of lakes and ponds joined together by numerous brooks and streams.

The altitude of many of these ponds is well over 1,500 feet above sea level and, as they are spring fed, the water is so cold that trout strike eagerly throughout the entire season. This is one reason, among many, why the region is favored by hundreds of anglers each season.

Included in the larger and better known lakes and ponds are Tim Pond, Chain of Ponds, Rowe Pond, Carry Pond, King and Bartlett Pond, Flagstaff Lake.

The area is reached over excellent roads. The angler or summer visitor will find accommodations in the area. (For location see sec. 8 of fishing map.)

9 BELGRADE LAKES REGION

(Black bass, salmon, trout, white perch)

This is one of the more compact areas in Maine. By that it is meant that the various lakes in the region are comparatively close to one another, making it extremely easy for the angler to go from one to the other.

In the Belgrade Chain are six lakes: North, East, Great, Long, Salmon and Messalonskee.

For many years the Belgrade region has been noted for its extremely fine black bass fishing, both smallmouth and largemouth bass. Belgrade Stream, for example, produces many two- to five-pound bass and sometimes heavier.

Some of the most beautiful brook trout caught anywhere are taken occasionally in the Belgrades and the world's record white perch was caught in Messalonskee Lake in 1949. There are salmon and other desirable gamefishes, too. The region is easy to reach and accommodations are available. (For location, see sec. 9 of fishing map.)

10 RANGELEY REGION

(Salmon and trout)

This region is as vast and as desirable as it is beautiful. It is the home of unforgettable trout and salmon fishing in sparkling lakes surrounded by forest-clad mountains; a place of such extraordinary beauty that the angler does well to attend to his fishing.

Years ago this region was noted strictly for its excellent trout fishing. Later, salmon were introduced to many waters so that now it affords fishing for both popular species.

A few of the waters in the region are Rangeley Lake, Cupsuptic Lake, Quimby Pond, Dodge Pond, Big and Little Kennebago Lakes, Kennebago Stream, Loon Lake, Richardson Lake, Mooselookmeguntic and Aziscoos. In addition, there are literally scores of other lakes, ponds and streams in the area.

The average elevation of this region is 1,200 feet above sea level.

Good roads lead to the center of this region at Rangeley village. Accommodations are numerous. (For location see sec. 10 of fishing map.)

11 KENNEBEC LAKES REGION

(Bass, salmon, trout, white perch)

This is an interesting region that furnishes
continued on page 34

Salt Water Fishing

by Barry Gibson

Maine's 3,478 miles of coastline offer some of the best salt-water fishing in the country. The rocky shoreline, interspersed with rivers and occasional beaches, combine with the rugged sea floor to provide perfect habitats for dozens of game and food species. The cold, clear water is arguably the cleanest in the U.S., and virtually all fish taken provide excellent table fare.

One of the reasons Maine's coastal angling is so productive is that fishing pressure is much lighter here than it is in many other states, mainly because you won't find many glamor species such as sailfish and marlin. Maine's best fishing, by and large, is for "meat and potatoes" varieties, although there are plenty of top-rated gamesters prowling the waters, many of record proportions.

Opportunities for visiting anglers can be broken down into three basic categories: deep-sea fishing on party or charter boats; inshore fishing on a private or rental boat; or fishing from shore. No license of any kind is needed to fish salt water.

Deep-Sea Fishing

Modern, well-equipped party and charter boats can be found in almost all the major harbors along the coast. Party boats, or "head boats" as they're sometimes called, range from about 40 to 65 feet and can carry from 20 to 50 or more passengers. These vessels usually sail on a daily schedule (half- or full-day trips) from June to September, and most run additional weekend trips in spring and fall. In most cases all you need to do is call ahead and make a reservation, although sometimes you can simply show up a half-hour before sailing time and buy a ticket. All Maine skippers, however, suggest advance reservations (even if it's only a day or two ahead) so that you won't be disappointed. Weekends can be particularly busy.

The main target for party boats is the wide variety of bottom fish found anywhere from a mile or two from shore out to 20 miles or so. *Cod* are the most common catch, ranging from a few pounds to the occasional 70-pounder. Remember that cod must be at least 15" long to be legally kept.

Pollock are among the gamest of deep-sea species in Maine, and action can be fast and furious when a school is encountered. These sleek, silver-gray battlers normally run from 10 to 35 pounds when taken in the open ocean.

The *haddock*, which generally runs from 2 to 10 pounds, is the perennial party boat

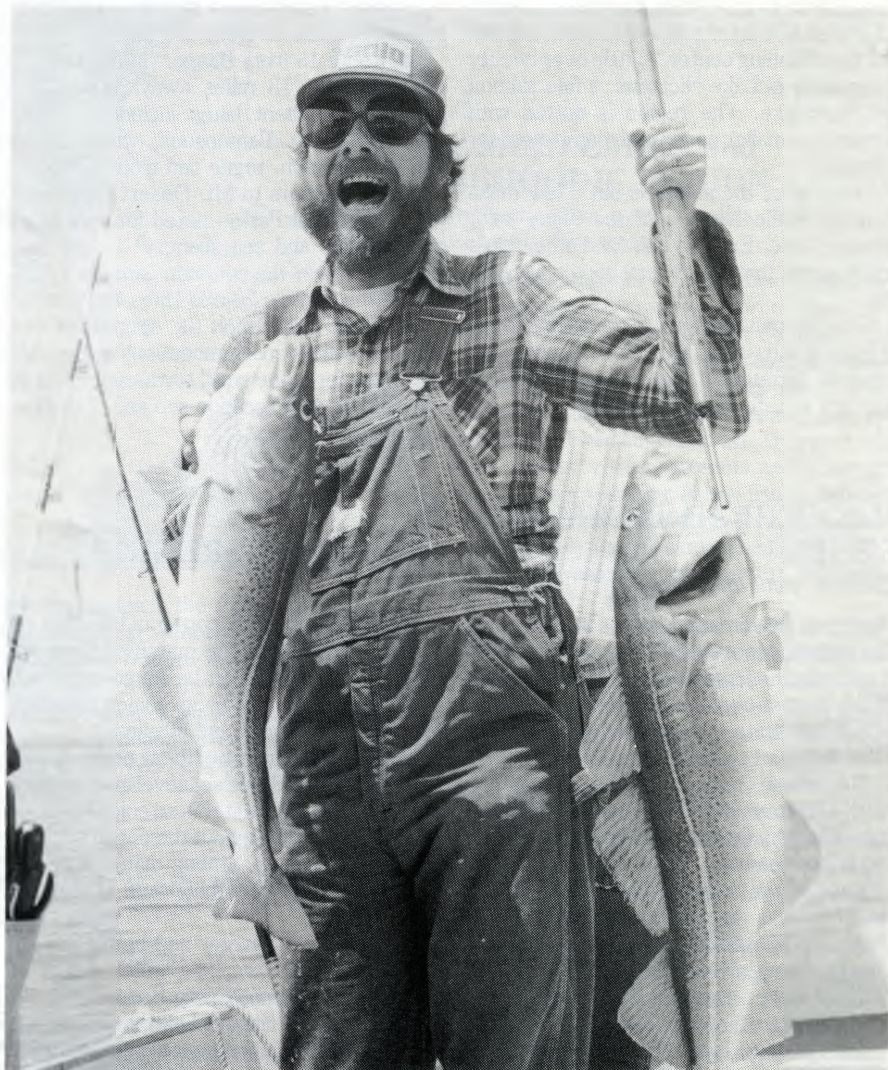
prize, primarily for its unsurpassed table qualities. They're easily identified by their single, dark lateral stripes and oversized eyes. Haddock must also be at least 15" long to be kept.

Other species commonly taken include the *cusk*, a muscular dweller of rocky bottoms weighing 5 to 15 pounds. Cusk makes an excellent ingredient for a good old-fashioned New England fish chowder. *Hake*, another tasty species, are occasionally taken in excess of 30 pounds. The *wolffish*, good eating despite its fierce appearance, is an incidental catch, as are *cunners*, winter *flounders*, a variety of *sculpins*, *mackerel*, and a dozen others. If you're really lucky

you'll tie into a *halibut*, the ultimate deep-sea trophy. These huge members of the flounder clan can weigh upwards of 200 pounds.

Party boats furnish each customer with a rod and reel, bait or chrome-plated jig — and plenty of good advice. Deckhands will cheerfully instruct you as to how to use the tackle. You don't need to know how to fish, or to bring any equipment of your own, to enjoy a day of party boat fishing. Prices range from \$25 to \$35 per person for a full day, and \$20 or so for a half-day.

Charter boats are also available in most harbors. These vessels are usually 24 to 40
continued on page 14



A double-header of cod comes aboard a party boat. Average size runs from 3 to 20 pounds, but 50-pounders aren't uncommon.



SPORT FISHING AT ITS BEST!

Charter the

SHARK III

Bottom Fish • Bluefish • Sharks • Giant Tuna

Half- and Full-Day Charters for up to 6 People

FAST, SAFE 31' TWIN-TURBODIESEL SPORTFISHERMAN

We Welcome Family, Group & Business Outings

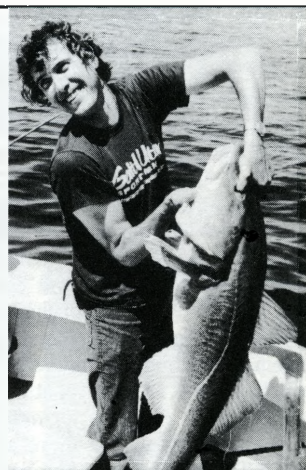
- All Tackle Provided
- U.S.C.G. Licensed
- Full Electronics
- Children Welcome
- Super Comfortable
- You Keep Your Catch

CAPT. BARRY GIBSON (207) 633-3416

Ans. Serv. (Dec.-April): (617) 927-5006 Dock Phone: 633-5440

Brown Bros. Wharf, Boothbay Harbor, ME 04538

OUR 18th SEASON OF FISH-CATCHING ACTION!



CAP'n FISH's

DEEP SEA FISHING

Full & Half Day Aboard the

YELLOW BIRD or BUCCANEER

Pier 1 • Boothbay Harbor, ME 04538

(207) 633-3244 or 633-2626

- Cod
- Cusk
- Pollock
- Mackerel

DEEP SEA FISHING PEGASUS

from Camp Ellis (Saco), Maine

**COAST GUARD
INSPECTED
AND
APPROVED**

JULY & AUGUST

Deep Sea Daily 7:00 – 12:00

Bay Fishing 1:00 – 5:00

Sunset Cruise 6:00

**CHARTERS
AVAILABLE**
May, June,
Sept. & Oct.

PRIZES • PICTURES • ROD & REEL PROVIDED



Capt. Howard Cutler

TEL. SHOP: (207) 283-1771

HOME: (207) 282-2580 for reservations

continued from page 12

feet in length, and they'll accommodate up to 6 people, sometimes more. All are run by fully licensed captains, and in many instances will have an extensive array of electronics and a wide selection of top-quality rods and reels, including light tackle outfits. Charter boats, besides going after all the bottom fish, also frequently pursue *giant tuna* (to 1,000 pounds), *sharks*, *bluefish* and *striped bass*. Many times the skipper will "mix up" the day for you, such as a morning of bottom or bluefishing and an afternoon of tuna or shark fishing, assuring customers plenty of fillets to take home. Charter boats are perfect for small groups, families, or more serious anglers, simply because there are no crowds — it's "your" boat for the day.

Fishing Near Shore

Visiting anglers interested in fishing the near-shore waters for mackerel, flounder, bluefish or striped bass can rent a small outboard boat (in some areas) or trailer their own boat. Launch ramps are numerous, and local tackle stores and marinas can provide fuel, charts (a must), bait, and advice on where to try your luck.

Mackerel are extremely popular among small-boaters, and can be caught from late May through September on tiny chrome jigs or by trolling multi-hook "mackerel trees" available in most tackle and hardware stores. These fish average a pound or so in weight, are scrappy fighters, and are delicious when split and pan-fried or grilled over charcoal.

Bluefish are one of Maine's true gamesters from early July through September, and they normally run 8 to 20 pounds. Most anglers troll plugs rigged on short wire leaders for these toothy critters, and when a fish hits he'll often jump repeatedly before you can work him boatside.

The *striped bass* is another fine game fish, most often taken near river mouths or well up into the rivers themselves. These fish are wary and can be finicky feeders, but you can

do well on trolled spoons, plugs, or live or cut bait. Most fish taken are "schoolies" of 3 to 10 pounds, but 50-pounders are taken every year. As of this writing, the proposed legal size limit of 1988 is 24", with a 2 fish per person per day bag limit. Striper laws can change quickly, though, so it's best to inquire before you head out.

Fishing From Shore

Fishing with light spinning tackle from Maine's rocky shoreline or harbor docks and piers can be a lot of fun, and action can be brisk for a myriad of smaller species. *Cunners* (often called bergalls) up to a pound or so are plentiful, and if you take the time to fillet them and remove all the small bones, you'll find that their flesh is sweet. *Harbor pollock* (the young of the open-ocean adults) are feisty fighters and are easy to catch, but they're not very good eating so it's best to

release them unharmed. Flounders, sculpins, small "tinker" mackerel, and others oblige anglers of all ages. The best all-around rig is a small hook tied 6" above a light sinker, baited with a piece of seaworm, or clam, although the meat of a periwinkle or mussel will often work just as well.

Surf fishing from the beaches is popular along the southern third of the state's coastline, and some good catches are made. Striped bass are most sought after, and the majority of the big ones over 20 pounds are taken at night on live eels or chunks of mackerel or poggy (menhaden). Bluefish muscle in on the act, often in daytime, and can be taken on plugs and lures as well as bait. Bring a pair of waders and a rugged surfcasting outfit from 9 to 12 feet loaded with 20-pound test line. Local tackle shops can supply bait, equipment, and up-to-the-minute information on current "hot spots."



Giant bluefin tuna like this 845-pound beauty are often taken from charter boats during the summer months. A typical fight can last several hours, often more.

FISHING LICENSE FEES

(Prices do not include the \$1 agent fee.)

RESIDENT

FISHING (16 and older)	15.00
COMBINATION FISHING & HUNTING	28.00
SUPERSPORT	38.00
COMBINATION FISHING & ARCHERY	28.00
3-DAY FISHING	17.00
1-DAY FISHING	5.00
SERVICEMAN (resident) COMBINATION	15.00
GUIDE (allows fishing & hunting)	40.00

NONRESIDENT

SEASON FISHING (16 and older)	42.00
COMBINATION FISHING & HUNTING	107.00
15-DAY FISHING	30.00
7-DAY FISHING	26.00
3-DAY FISHING	17.00
1-DAY FISHING	5.00
JUNIOR FISHING (12-15 years)	5.00
GUIDE (allows fishing & hunting)	142.00
ALIEN SEASON FISHING (16 and older)	62.00
ALIEN COMBINATION FISHING & HUNTING	160.00
ALIEN GUIDE (allows fishing & hunting)	167.00

Western Maine



AIMHI LODGE

A UNIQUE MAINE EXPERIENCE

Since 1919

Box (F), North Windham, Maine 04062 • 207-892-6538

Before 6/1 & after 9/9 892-4602

Located on Little Sebago Lake, we offer excellent bass fishing (our chef will be happy to cook your day's catch), motor boats, canoes, row boats, sailing, waterskiing, swimming, tennis, horse shoes, shuffleboard, pool table & much more, or just relaxing on your own lake-side porch.

Rates include supervised children's activities, 3 delicious family-style meals including homemade breads, pastries & our Friday Night Lobster Bake.

AIMHI LODGE

When calling or writing to advertisers, please mention the Maine Guide to Hunting and Fishing

ONE OF SEBAGO LAKE'S TOP LOCATIONS
FOR THE SPORTSMAN AND HIS FAMILY

Come Stay With Us Overnight or By The Week

HUNTING • FINE FISHING – BASS, TROUT, SALMON, TOGUE
BEACH • DOCKING FACILITIES • PICNIC TABLES & GRILLS
CONTINENTAL BREAKFAST • FISHING & SKI BOAT RENTALS

Sebago Lake Lodge and Cottages

White's Bridge Rd., North Windham, ME 04062
ON THE WATER Phone (207) 892-2698

Reg. Guide N.R. Licenses

**Try hunting, fishing, skiing, or
just plain relaxing on Rangeley
Lake, high in the mountains of
the Saddleback/Sugarloaf area.**



Come to *Conifer* and have the time of your life! This beautiful Rangeley lakefront lodge is nestled in the woods on 7½ private acres. It's a spacious yet cozy self-housekeeping unit for you and your friends that includes a kitchen, game room and five separate bedrooms for up to 14 people.

Daily or weekly rates available.

SEBAGO TRADING POST

679 Roosevelt Trail, Windham, ME 04062

For details, please call or write:

Phone 207/892-6315



Sebago Lake Cottages

YEAR ROUND RESORT



Open for early spring and late September fishing. No better salmon, trout, togue or bass grounds on the lake. Boats, motors, and non-resident licenses all here.



Open for October and November hunting for deer, bear, small game, partridge, pheasant, and migratory game birds. Area abounds in apple orchards, farms, beech ridges, woods roads, timber slash, and small ponds.

Heated, fully furnished housekeeping camps. Linens, cooking utensils, electricity, gas and wood furnished.

For information and brochure write or call:

Ray & Fran Nelson

Tel. (207) 787-3211

SEBAGO LAKE CAMPS

Box 905 • North Sebago, Maine 04029

Canadian Trail



Lakeshore Cabins

Rustic log or modern housekeeping units on beautiful Wyman Lake. Fully equipped – hot water – linens.

Vacation - relax, swim, boat
Fish - rainbow, togue, salmon
Hunt - grouse, bear, deer, moose

Please call or write:

Marc or Sandra Chadbourne
HCR 64, Box 22
Bingham, ME 04920
207/672-3771

COLE FARMS

"ONE STOP AND IT WILL BECOME A HABIT!"

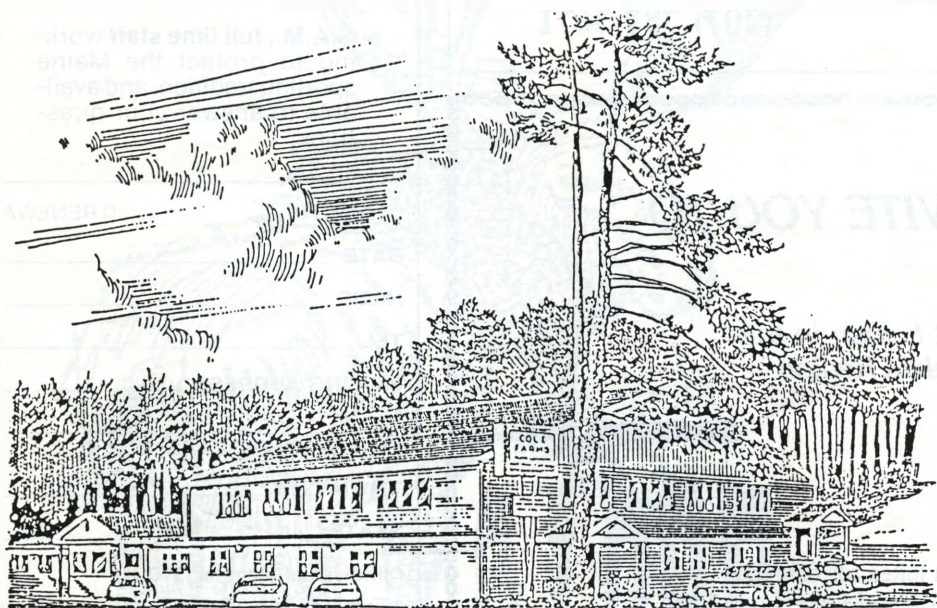
For over 30 years, Cole Farms has been serving loyal customers of all ages, who come from miles around to enjoy our fine fare. Much of our food is prepared from old family recipes. In order to have a menu which is distinctive from other restaurants of our type, no pre-portioned or pre-breaded foods are used. We make our own ice cream, bake our own beans, cut and process hamburger and all other beef products. Our chickens are cooked daily.

FRESH, GOOD FOOD

Most of our seafood comes from the cold waters of the North Atlantic. Mayonnaise, tartar sauce, blue cheese, cole slaw, and Cole Farms house dressings are prepared on the premises . . . also clam cakes, pies, muffins, soups and chowders.

REASONABLE PRICES

Cole Farms Plate Lunches range from \$3.00 to \$9.00; our daily "Specials" range from \$2.00 to \$4.50. Our coffee, a La Touraine Hotel Blend, is still 15 cents a cup!



COLE FARMS SWEET & SOUR DRESSING IS NOW AVAILABLE IN THE PRODUCE DEPARTMENT OF MANY SUPERMARKETS IN MAINE, NEW HAMPSHIRE, VERMONT AND MASSACHUSETTS.

CONVENIENT LOCATION

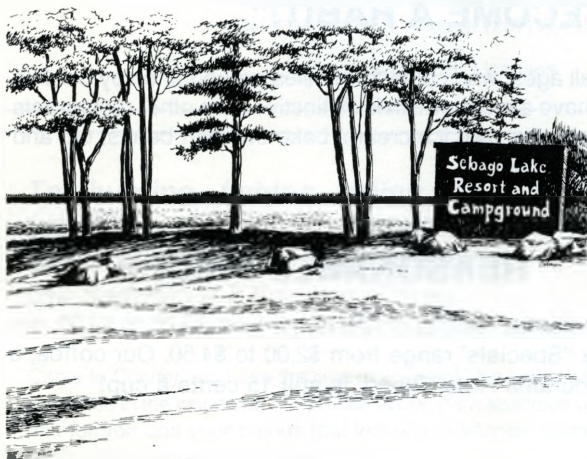
Cole Farms is located midway between Portland and Lewiston on Route 100 in Gray. If you're travelling on the Maine Turnpike, we are easily reached by leaving Gray Exit 11 and going one mile north, or ten miles south from Auburn Exit 12.

*Open every day except Thanksgiving and Christmas from 5 A.M. to 11:30 P.M.
Counter and Take-out till Midnight!*

PORTLAND – LEWISTON ROAD, GRAY, MAINE

SEBAGO LAKE RESORT AND CAMPGROUND

RFD 1, Box 9360
Rte. 114
Sebago Lake, ME 04075



Located directly on beautiful Lake
Sebago, also offering cottage and
travel trailer rentals.

Rte. 114 Standish, Maine
(207) 787-3671

- Private beach
- Boat rentals
- Canoe rentals
- Fishing
- Bathhouse
- Hot showers
- Playground
- Recreation hall
- Bingo
- Video game room
- Movie room
- Store
- Restaurant
- Coin laundry
- Gift shop
- 5,000 sq. ft. sites
- Boat docks
- Boat moorings
- Boat launching nearby



For those who care
about the
Maine outdoors:
JOIN S.A.M.

SPORTSMAN'S ALLIANCE of MAINE

"We are the conservationists"

Dedicated to **Conserving**
our natural resources, **Pre-**
serving our rights to hunt,
fish, and trap, and **Educating**
the public on conser-
vation issues.

- **Monthly newsletter** keeps you informed of developments affecting Maine fish & wildlife resources.
- **Membership card** entitles you to **discounts** on goods and services from participating businesses.
- **S.A.M., full time staff** working to protect the Maine sporting tradition, and available to answer your questions.

☐ NEW ☐ RENEWAL

DATE _____

NAME _____

TEL. _____

MAILING ADDRESS _____

(STREET RFD, BOX #)

TOWN/CITY _____

STATE _____ ZIP _____

- ☐ Individual Member, \$10
☐ Family Member \$12 (List names of family)

- ☐ Conservation Member, \$25
☐ Supporting Member, \$50
☐ My check for \$_____ is enclosed.
☐ Bill me.
☐ Charge it!

Visa/MasterCard No. _____

exp. date _____

Mail to: SAM, P.O. Box 2783
Augusta, ME 04330

WE INVITE YOU TO

*Hunt & Fish in the
Lakes Region*



Eleven lakes for fishing . . .
Sebago, Highland Lake, Long Lake
& Moose Pond

You will enjoy our hospitality
and make your next hunting or fishing
trip an unforgettable experience.



Write for Brochure to:

Bridgton-Lakes Region Chamber of Commerce
P.O. Box 236 HF
Bridgton, ME 04009

DISCOVER THE LURE



& LORE

THE RANGELEY LAKES



HUNT

DEER

NOVEMBER 2
TO NOVEMBER 28

BEAR

SEPTEMBER 1
TO NOVEMBER 30

WOODCOCK & PARTRIDGE

OCTOBER 1
THRU NOVEMBER



FISH SALMON & TROUT

LAKES & PONDS

ICE—OUT
TO SEPTEMBER 30

RIVERS

ICE—OUT
TO SEPTEMBER 30

BROOKS & STREAMS

ICE—OUT
TO AUGUST 15

INFORMATION & RESERVATIONS

RANGELEY CHAMBER OF COMMERCE
P.O. BOX 317HF RANGELEY, MAINE 04970
CALL 207-864-5364

TURN

FOR ACCOMMODATIONS & SERVICES



The Rangeley Lakes

"blessings of nature" ranked
18th in the U.S. in Rand

McNally's recently published
Vacation Places Rated. Come rate
the region by their criteria. • Varied and
expansive terrain, • open space,
• high proportion of forest and inland water,
• prominent scenic rivers, • wildlife
preservation and nature's spectaculars.
Find boat and motor rentals, a charter flying
service, guides, sporting gear, varied
accommodations and dining.

information & reservations
RANGELEY CHAMBER OF COMMERCE
P.O. Box 317HF Rangeley, Maine 04970
Call 207-864-5364

RANGELEY REGION GUIDE SERVICE

Ray Soriano, Master Guide & member
Maine Professional Guide Association
Dave Kreshpane, Registered Maine Guide

BEAR, over bait excellent success
DEER, trophy bucks
PARTRIDGE & WOODCOCK, w/dogs
SALMON & TROUT, fly fishing
or trolling lakes and ponds

P.O. Box 19HF Rangeley, Maine 04970
call 207-864-5761



fish, hunt & boat

Mountain View Cottages

Rangeley Lake

Cy Eastlack, Registered Maine Guide
fully-equipped, housekeeping
cottages on the lakeshore

Route 17, P.O. Box 284
Oquossoc, Maine 04964
call 207-864-3416

always open
on the shore of Rangeley Lake

Town & Lake Motel

& HOUSEKEEPING
COTTAGES

in town, on the lake/guides

Motel rooms, kitchenette units, 2-
bedroom housekeeping cottages with
electric kitchens, dishwasher, fireplaces,
wall-to-wall carpets, oil furnaces, color
TV. Pets allowed.

P.O. Box 47 Rangeley, Maine 04970
call 207-864-3755



**MOUNTAIN
VIEW
AGENCY**

property management
real estate sales

P.O. Box 904
Rangeley, Maine 04970
call 207-864-5648

Russell's MOTOR CAMPS

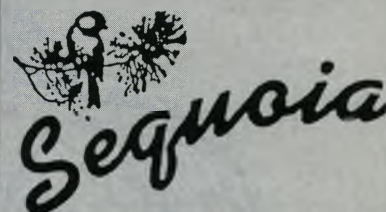
HOUSEKEEPING & OVERNIGHT
MAY TO OCTOBER

**ideal
for fisherman
and vacationist**

trout and salmon fishing
lakes, rivers & streams

16 rustic cottages on the shore
of Rangeley Lake near popular
fishing spots, boats and
launching, hiking, tennis & golf
nearby swimming and outdoor
sports, ¾ of a mile from town
reasonable rates

P.O. Box 106A Rangeley, Maine
04970 call 207-864-2204



**HOUSEKEEPING
CABINS**

ON RANGELEY LAKE
FULLY-EQUIPPED

- Located between Quimby Pond and Mooselookmeguntic Lake.
- Lake fish for Native Brook Trout and Landlocked Salmon or try your luck in numerous streams, rivers and ponds.
- Fall hunting for White-tailed Deer, Moose, Birds, small game & Black Bear.
- Dock: boat, motor and canoe rental or bring your own.

brochure on request: Rt. 17 P.O. Box
208, Oquossoc, Maine 04964
call 207-864-3492

John and Florence Paine

insurance
real estate
private rentals



**Morton &
Furbish Agency**

rental agent for
Quimby Pond Camps
Flybuck
Town Park Condos

P.O. Box 130 Rangeley, Maine 04970
call 207-864-3334 or 207-864-RENT

a private world
away from the real world

NORTH CAMPS

ON RANGELEY LAKE

fish and hunt
birds, big & small game

12 modern, housekeeping
cottages and American Plan;
fireplaces, screened porches,
boats, motors and canoes to rent.

E.B. Gibson
P.O. Box 250
Rangeley, Maine 04970
call 207-864-2247

THE TERRACES COTTAGES



P.O. Box 3700
RANGELEY
MAINE
04970

Escape to Maine/rent a cottage

- on Rangeley Lake, surrounded by mountains
- housekeeping & overnite cottages, 2 to 8 persons
- heated, with showers
- \$249 up weekly, \$45 up overnite
- best salmon & trout/boats, motors, docking
- ice-out thru fall foliage, 10% off spring & fall

winter call 516-483-4530 or 207-864-5451
in season, 207-864-3771

Sunset Cottages

Rangeley
Maine, 04970
call 207-864-3657

14 comfortable, housekeeping
cottages. Located on south shore of
Rangeley Lake, 4½ miles from
Rangeley. Swimming, boating,
hunting, fishing, snow machining
and skiing.
open year-round
folder on request

WELCOME TO BALD MOUNTAIN CAMPS



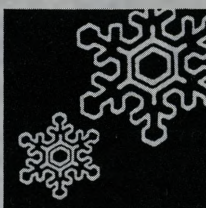
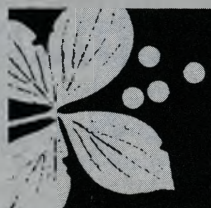
The ideal American Plan resort for
fishermen and vacationers. OPEN
MEMORIAL DAY WEEKEND. Boats
and motors available.

For color brochure: Ronald
Turmenne, P.O. Box 332 Oquossoc,
Maine 04964 call 207-864-3671



HUNTER COVE

ON RANGELEY LAKE



open year-round/pets welcome
call or write for brochure
group rates available

Mingo Loop Rd. HC 32, Box 2800
Rangeley, Maine 04970 call 207-864-3383

NOW

renovated for

the pleasure of all, sporting camps,
a chapter in Rangeley's lore.
Nine of them, designed for all sea-
sons, clustered on six wooded
acres. Hunt birds and big & small
game. Watch first ice-out at your
door on Hunter Cove. Catch salmon
and trout in the lake or nearby
rivers & streams. Beautifully fur-
nished & decorated. Fully equipped
for all needs. Color TV, deluxe
units with hot tubs.
Enjoy luxury in the wilderness.



LOG CAMPS • MARINA • BOATS WITH MOTORS • CALL 207-864-3627
HAINES LANDING RENTALS • OQUOSSOC • MAINE 04964 • P.O.B. 331

MOOSELOOKMEGUNTIC HOUSE

GUNS · AMMO · RELOADING SUPPLIES FISHING · ARCHERY & MORE!



ORION GUN SHED

Jct 25 & 113
Standish, Maine
(207) 642-3514

HOURS
MON-FRI: 10:00-6:00
SAT: 9:00-6:00
SUN: 10:00-2:00

Authorized Dealer of...



Weatherly



**OPEN
7 DAYS A WEEK!**

Bosebuck Mountain Camps

ON AZISCOOS LAKE · WILSONS MILLS, MAINE 03579

Enjoy Maine's vast western mountain region while hunting grouse or white tail deer. Fish for native brook trout or salmon in either of two lakes or 16 miles of rivers. Restricted access to over 200,000 acres of wilderness assures you of secluded hunting and fishing. Three home cooked meals served daily in our dining room. We pride ourselves in looking after our guests needs.

Fishing: Ice out to Sept. 30

Hunting: Oct. for Grouse

Nov. for Deer

Summer family vacation rates
and fishing package rates.



For brochure call or write:

Tom & Susan Rideout

Box MPB

Wilsons Mills, ME 03579

In season: (207) 243-2945

Dec.-May: (207) 486-3238



Grant's Kennebago Camps RANGELEY'S FINEST



Modern comfort in a rustic atmosphere.

"Old fashioned" home cooking served in central dining-room.

Fly-fishing only for native trout and salmon in virgin Kennebago waters.

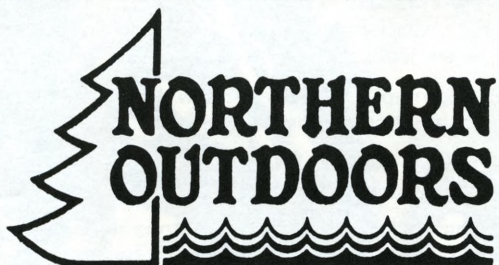
Reasonable rates. Reservations advised.

Write for brochure and further information.

Box 786, Rangeley, ME 04970

Tel. Rangeley, ME 864-3608 or 864-3754

Walter (Skeet) Davenport, Manager



MAINE'S #1 OUTFITTER

HUNTING

Completely packaged trophy Buck and Bear hunting in remote wilderness areas. Our outfitting services are unique in the Eastern United States. Guided and unguided hunts, luxury lodge, remote tent camps or wilderness cabins. We supply it all: food, vehicle, friendly competent guides and a proven track record for over a decade.

FISHING

We have three outstanding campgrounds and camp locations for the serious fisherman.

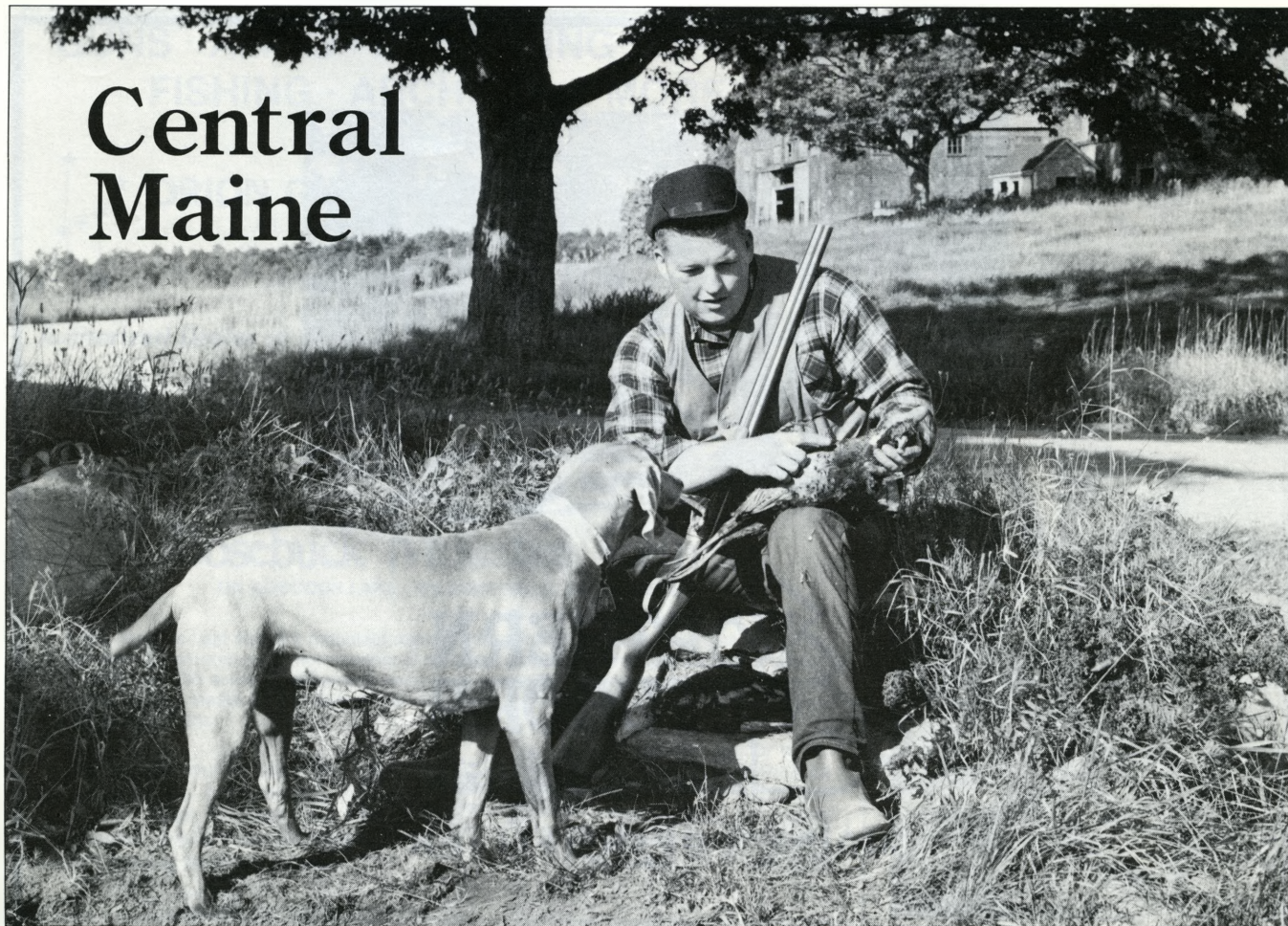
- a.) Northern Outdoors lodge on the Kennebec River.
- b.) Seboomook campground and camps on the northern tip of Moosehead Lake.
- c.) Pockwockamus Pond campground on the West Branch of the Penobscot River.

For references and further information call or write:

NORTHERN OUTDOORS

P.O. Box 100
Route 201
The Forks, ME 04985
201-663-4466

Central Maine



Stay and Play In the **BELGRADE LAKES REGION**

a water wonderland in the



of Maine

NAME _____

ADDRESS _____

NUMBER IN PARTY _____

VACATION DATES _____

RESORT WITH MEALS _____

HOUSEKEEPING CAMP _____

BELGRADE LAKES REGION, INC.
P.O. BOX 426 • OAKLAND, ME 04963

- Housekeeping Camps
- Resorts with meals
- Seven crystal clear lakes
- Peaceful country woodland setting
- Fishing for bass, salmon, trout, pickerel and perch
- All water sports
- Near golf, tennis, theaters, shopping and sightseeing
- Easy drive to coast and mountains
- For illustrated folder and map, complete and mail this coupon.

**VISIT OUR INFORMATION CENTER, ROUTE 27, BELGRADE
OPEN JULY AND AUGUST TEL. 495-3444**



Castle Island Camps



OF BELGRADE LAKES, MAINE

Located on an island, crossed by the Belgrade Lakes — Mount Vernon road, on Long Pond of the famous Belgrade Lakes. Twelve completely furnished modern, attractive cottages in a beautiful pine setting. All on the shore front with state approved gas space heaters. Hot showers. In the Community Building on cool evenings, you will enjoy the huge open fireplace. In the Dining Room, the best of home-cooked food is served in abundance three times daily. There is also a sun deck over the water. Swim in pure clear water.

Newly constructed large recreation room with regulation size pool tables, ping-pong table, card tables and dart games.

Bass, Trout, Salmon, Great Northern Pike, Perch and Pickerel fishing. Salmon and Trout fishing at its best in May & June. Bass fishing at its best in June & September.

In twelve-mile Long Pond, the angler can fish from spring until fall and throughout the season, due to careful stocking. Boats, motors, mixed gasoline, bait, fishing licenses and fishing equipment may be obtained at the camp.

Everything necessary for a fine vacation is available at the camp. The boats are all 14 ft. ALUMA-CRAFT and rent for \$10.00 per day. The late model engines are Johnson and rent as follows: 6 H.P. \$18.00 7½ H.P. \$20.00 10 H.P. \$23.00 15 H.P. \$26.00 These rates include boat.

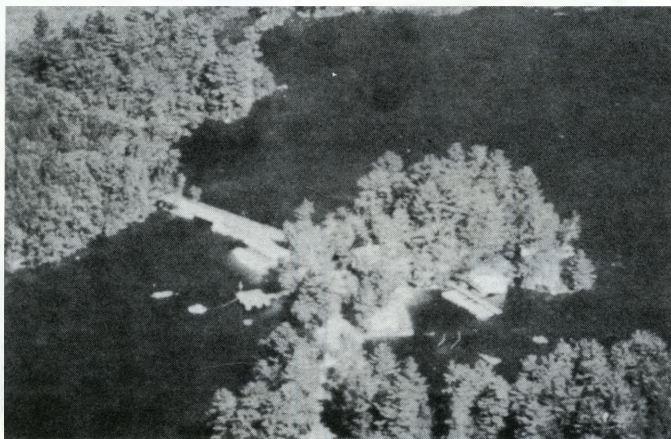
The picturesque village of Belgrade Lakes is easily accessible by car or boat. Find golf courses in Waterville and Augusta. Accommodations are for one to six persons per cottage and rates are:

Adults	Daily	Weekly	Per Day after 1st Week
Single Occupancy (one person)	\$40.00	\$273.00	\$39.00
Double Occupancy (one bed)	\$39.00/per	\$266.00/per	\$38.00/per
Twin Occupancy (two beds)	\$40.00/per	\$273.00/per	\$39.00/per
Children, 1-2 yrs \$11.00; 3-5 yrs. \$17.00; 6-7 yrs. \$22.00; 8-10 yrs. \$23.00 11 to and including 12 yrs. \$24.00			

All rates, plus sales tax are per person and include cottage and all meals.

Reservations necessary — Deposit of \$50.00 per person when confirmed.

Member: Maine Publicity Bureau, Waterville Chamber of Commerce, Belgrade Lakes Association.



"Our 57th Year"
"Plan to diet some other time"

We will do everything possible to make your stay a vacation long to be remembered.

For further information or reservations, please write or call:

Horatio & Valerie Castle, Owners
CASTLE ISLAND CAMPS
Box 70, Belgrade Lakes, Maine
04918

Tel. (207)495-3312
SEASON MAY 1ST TO
SEPTEMBER 15TH

Winter address:
(Oct. thru Mid-April)

Horatio A. Castle
815 Francis St.
West Palm Beach, Florida 33405
Tel. (305) 833-3510

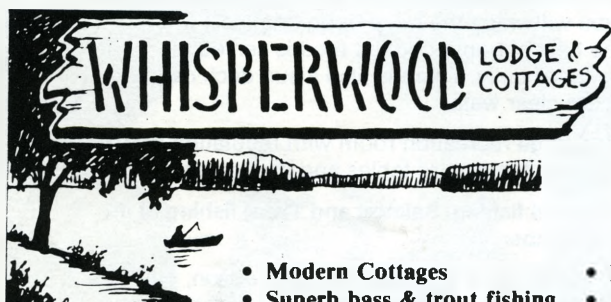
ABENAKIS FISHING CAMPS

Rt. 1, Box 68
Dept. MF BELGRADE, MAINE 04917
Andy and Muriel Jancovic, Props.

- Ideally situated at the mouth of Belgrade Stream
- 7 miles of stream fishing
- Access to Lake Messalonskee
- Fresh spring water in each cabin
- Landlocked salmon
- Large & small mouth bass
- Pickerel
- Perch
- Fishing licenses available

Housekeeping Camps - Swimming - Motors - Boats

PHONE (207) 495-2294



A quiet, peaceful vacation on the shores of beautiful Salmon Lake. Enjoy good food in a warm, friendly atmosphere.

- Modern Cottages
- Boat & motor rentals
- Superb bass & trout fishing
- American Plan

ART & DONNA FITZGERALD
No. Belgrade, ME 04963 (207) 465-3983

CRYSTAL SPRING CAMPS

BELGRADE LAKES, MAINE

LODGING • MEALS • FAMILY VACATIONS
BASS • TROUT • SALMON • PIKE

110-Acre American Plan Resort with 1/3 mile of secluded shore-front on Great Pond of Belgrade Lakes. Come and relax with us. Enjoy your own private 1-3 bedroom cabin — each with dock, private bath and fireplace. Swim, boat, and fish in our crystal clear water. Swing in a hammock under towering pines and watch the sun set across the lake from the deck of your water-front cabin. All meals are home cooked and carefully prepared for your enjoyment. Crystal Spring Camps is a special place — come share it with us. **MAY 15 – OCT. 15.** Hunting Season — Open during November for group of 4 minimum. Scott and Janice Mitchell, Crystal Spring Camps, HCOO Box 110, Belgrade Lakes, ME 04918-9508. Tel. (207) 397-2542.

Special Off Season Rates

SPRING SALMON/TROUT • FALL FISHING/BIRD/BOW
MAY 15 – JUNE 18 • SEPT. 1 – OCT. 15

SPECIAL RATES

Rates include all lodging, meals, and boat with 9.9 Motor

3 Days/2 Nights \$100/person

8 Days/7 Nights \$250/person

NOVEMBER HUNTING — Group of 4 minimum

8 Days/7 Nights \$200/person

New Modern Motel OPENING SUMMER '87

Nestled among thirteen fishing lakes and 138 miles of excellent well-groomed snowmobile trails. Motel is also accessible by snowmobile.

Fish — small mouth bass on the Penobscot River

Hunt — deer, moose, bear, partridge

Ski — cross country or downhill Mount Jefferson

Short trip to Baxter State Park & Mount Katahdin

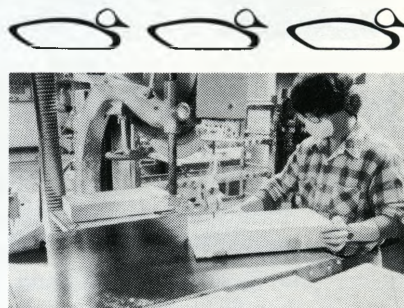
Conveniently located near airport, restaurants, sportshop, boat/motor rentals and more.

Telephone or write us for more information.

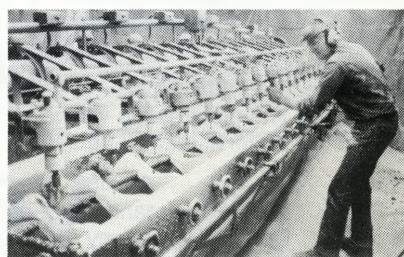
BRIARWOOD MOTOR INN

Homer & Brenda Clough

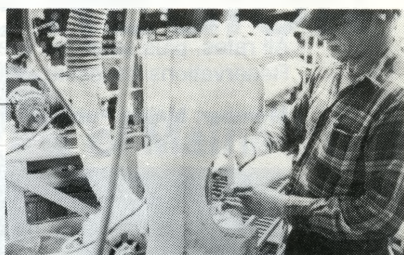
Outer W. Broadway — P.O. Box 387
Lincoln, Me. 04457 207-794-6731



Pre-forming prior to carving the decoys



Carving the decoys

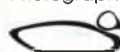


Decoys are hand-sanded prior to painting



Decorative decoys are hand-painted

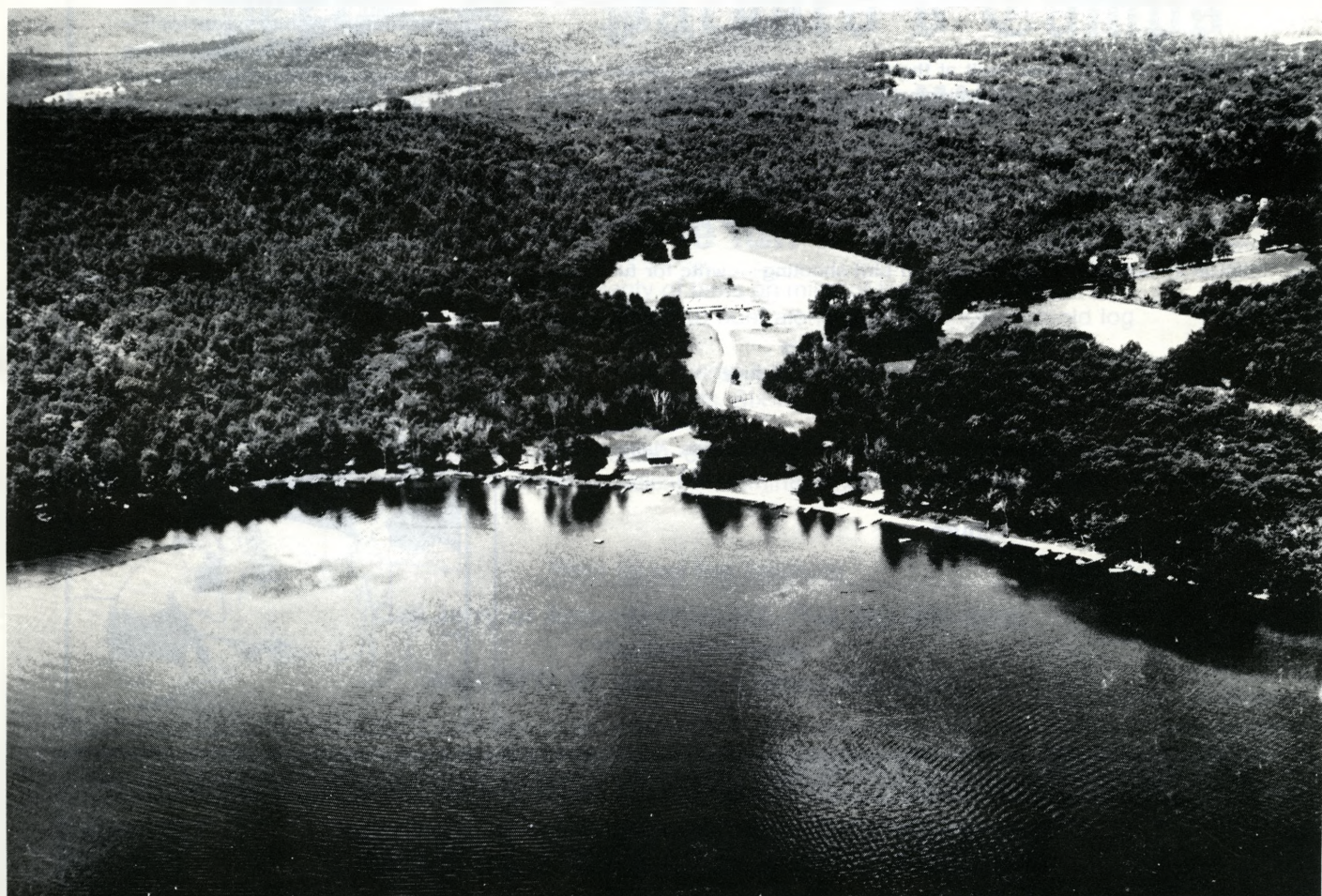
Photographs courtesy of

 **the decoy shop**

P.O. 270 MAIN ST.
BOWDOINHAM, ME 04008
207-666-8461

celebrating its 50th year.

Bear Spring Camps



A 400 acre American Plan cottage resort in the heart of Maine on Great Lake of the Belgrades, only 15 minutes from the Maine Turnpike, the city of Waterville, and the 18 hole championship golf course of the Waterville Country Club.

Thirty-two 2 to 5 room lakeshore cottages with open fireplaces, full baths and automatic heat on $\frac{3}{4}$ mile sand beach. Private docks, boats, motors, fishing, water skiing, tennis, and golf range.

**Enjoy some of the best fishing Maine has to offer.
May thru September**

Bass • Salmon • Trout • Pickerel • Northern Pike • Perch

Rates \$160.00 to \$190.00 a week per person double occupancy includes all meals.

Lower rates for large parties.

For more information write or call:

Bear Spring Camps

RFD 2, Box 1900

Oakland, Maine 04963

Tel. (207) 397-2341



Marquerite & Bert Mosher - owners

Peg & Ron Churchill - managers

WOODLAND CAMPS

In the beautiful Belgrade Lakes
Region of Central Maine



Classic Maine sporting camp built at the turn of the century — located on the shore of an 8,000 acre lake. Fifteen log cabins modernized for your convenience, featuring dining room with full American Plan. Make your home base at Woodland Camps and fish for these species: Landlocked Salmon, Smallmouth Bass and Large-mouth Bass, Brown Trout and Rainbow Trout, Brook Trout, Atlantic Salmon, Northern Pike, Bluefish and Striped Bass. We have guided fishing on Maine's best waters. Write today for a brochure on specialized fly fishing instruction. Non-resident licenses available.

Join us in October for guided upland bird shooting — write for full details.

Open from May thru October
"Fisherman's Special" during May & June

Your host —

Betty Grant, Woodland Camps, P.O. Box 445MIY, Belgrade Lakes, Maine 04918

Telephone — May-Sept. 207-495-2251 Oct.-April 207-495-2132

Mail Coupon for FREE Brochure

Name _____

Address _____

Telephone _____

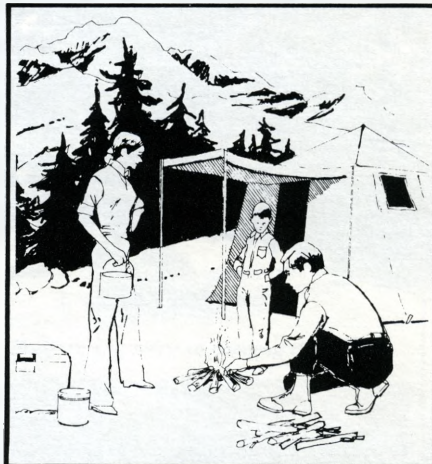
A & J Cabins

Rustic Log Cabins - Located in the heart of the foothills. Completely furnished except for linens and towels. Excellent fishing (landlocked salmon, trout, perch and bass). Secluded area for deer hunting.

Open Year-round

Call 207/627-4122

Write: P.O. Box 38, Casco, ME. 04015



ALDEN CAMPS East Lake

FAMOUS FOR BASS

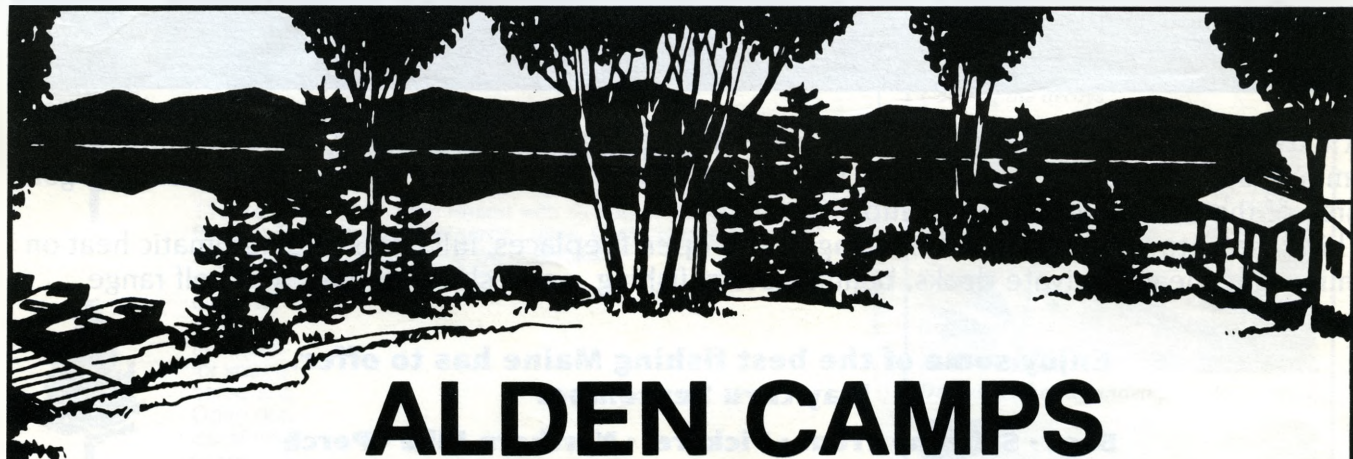
AMERICAN PLAN

COTTAGES

BOATS & MOTORS

SPECIAL SPRING AND FALL RATES

ALDEN CAMPS OAKLAND, MAINE 04963
207-465-7703





STATE AGENT FOR HUNTING AND FISHING LICENSES

Packard's Camps

SEBEC LAKE, MAINE 04443

Hunters, Fishermen and Outdoor people Come and have fun at Sebec Lake

- Grouse hunters - we have plenty of birds on miles of log roads
- Deer hunters will find great places to hunt along the lake shore and old log roads, miles of woodland.
- Moose hunters, a specialty. Moose camp is located in South Central zone.
- Fishermen - salmon fishing hot spots. Six nearby ponds for lake trout and brookies - licenses and boats
- Outdoor people - housekeeping cottages on the lake shore completely furnished, boats available, excellent swimming, small store on the property.

Send for our free brochure.

Call Jerry or Amanda Packard - Tel. 207-997-3300

Packards Camp

Mail: RFD #2, Box 176, Gilford, ME 04443

DOLLEY'S SNUG HARBOR CAMPS

On Great Lake in the Belgrade Lakes Region

WATER SKIING · SAILING · COOKOUTS

Good fishing for small or large mouth bass, salmon, trout, pickerell, pike or perch. Electrically heated, accommodations from 2 to 6 persons. If it's good food and a friendly atmosphere you want—this is the place for you! Fun for the whole family—excellent swimming. Reasonable rates include all meals. Boats and motors available for rental. May 15 to Sept. 15.

Write for information or call

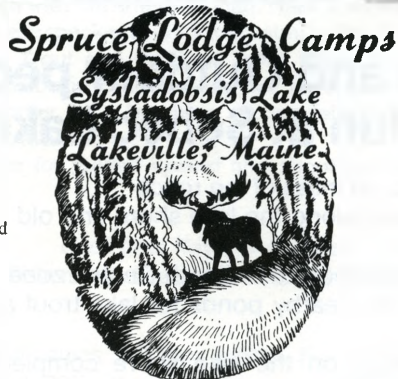
207/465-3005 or 207/872-5268

Owners - Managers Sandy & Barry Dolley & Family
18 Smiley Ave., Winslow, Maine 04901



*Serving the Sportsman
nearly 100 years.*

*In the Heart of the
Grand Lake Region.*



Lakefront housekeeping
cabins fully equipped.

Hearty homecooked meals
American or MAP — served
in our dining room over-
looking the lake.

Boats, motors, canoes.

Guides.

Easily accessible by
road or float plane.

Landlocked salmon,
bass, perch, brooktrout,
pickerel.

Excellent bird hunting.



*For reservations or brochure
call or write:*

Ron & Kat Bradford
Spruce Lodge
Box 63
Springfield, Maine 04487
207-738-3700

WILDWOOD CAMPS

Route 1 — Box 5060
Hartland, ME 04943
207-938-4819 or 207-938-2526
Bob Martin & Charlotte Martin

On Great Moose Lake, excellent bass, salmon, white
perch and pickerel fishing with trout streams nearby.
Modern housekeeping cottages — open May 1st.
Boats, motors, canoes, sailboats for rent. June specials:
Write for brochures.

Winter Address:
11508-81st PL.N.
Seminole, FL. 34642
813-397-9341 813-393-2936

Guilford of Maine

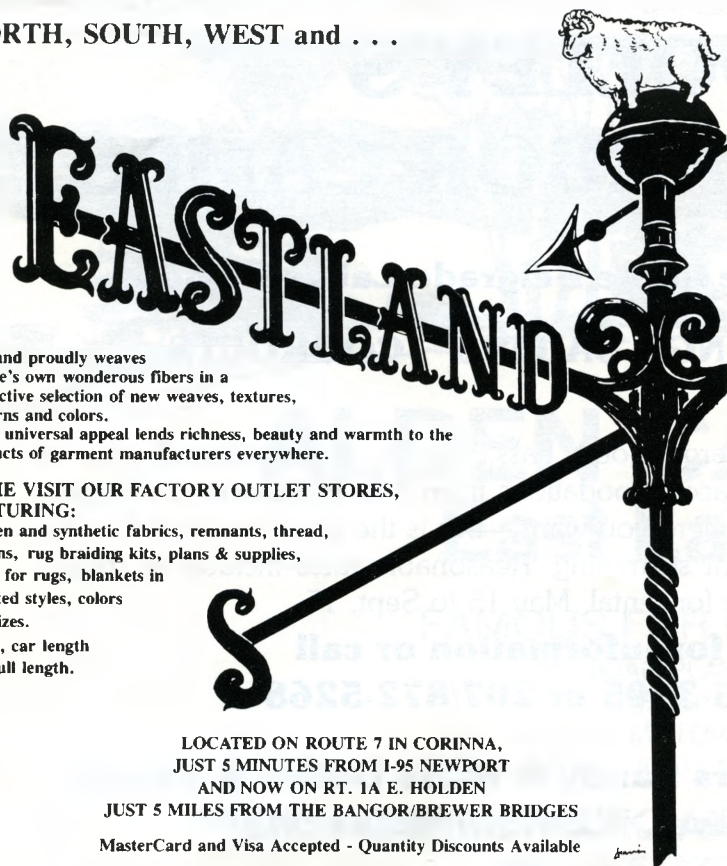
Manufacturers of fabrics for total interiors

- **Plaid Camp Blankets**
(For Cool Maine Nights)
- **Upholstery Remnants**
- **Panel/Wall Covering Fabric**
- **Apparel Fabric**
"Everything For The Wardrobe In The Making"

GUILFORD
Oak St., Guilford
876-3331
Mon.-Sat. 9-5
Sunday 12-5

EASTPORT
Quoddy Village
853-4331
Mon.-Sat. 9-5

NORTH, SOUTH, WEST and . . .



Eastland proudly weaves
nature's own wondrous fibers in a
distinctive selection of new weaves, textures,
patterns and colors.
Their universal appeal lends richness, beauty and warmth to the
products of garment manufacturers everywhere.

COME VISIT OUR FACTORY OUTLET STORES,
FEATURING:

Woolen and synthetic fabrics, remnants, thread,
buttons, rug braiding kits, plans & supplies,
strips for rugs, blankets in
assorted styles, colors
and sizes.

Coats, car length
and full length.

LOCATED ON ROUTE 7 IN CORINNA,
JUST 5 MINUTES FROM I-95 NEWPORT
AND NOW ON RT. 1A E. HOLDEN
JUST 5 MILES FROM THE BANGOR/BREWER BRIDGES

MasterCard and Visa Accepted - Quantity Discounts Available

MAINE PEOPLE, PRODUCING QUALITY PRODUCTS FOR THE WORLD



Route 201 North
Skowhegan, Me.
04976

- Modern rooms with
dial phones and cable
TV with HBO
- One and two bedroom
kitchenettes
- Complimentary toast,
juice and coffee
- Centrally located to
prime hunting and fish-
ing areas in southern
Somerset County

207-474-5151

STONEWOOD

Camps
on Sebec Lake

Housekeeping cabins. Open year-round. Fishing, hunting, vacations. Guide Service.

RFD 2 Box 54
Dover-Foxcroft, Me. 04426
1-207-564-3093



TWO FALLS CAMPS

Deer • Bear • Bobcat • Rabbit • Woodcock • Partridge

50,000 acres unposted land • Miles of logging roads • Lots of old apple orchards
Complete housekeeping cottages with gas heat • Hunting supplies

Trout • Salmon • Bass • Perch • Pickerel

14 mile long Sebec Lake. Nearby Ponds and streams.

Fishing & Hunting licenses available.

Cottages by week, month or extra low season rate • Send for color brochure

R.F.D. 2, Box 178, Guilford, Maine 04443 (207) 997-3625

MARR POND



OUTDOOR TRAVEL AND GUIDE SERVICE
"Come Share the Outdoors"

• Guided Maine Fishing, Hunting, and Recreation in Piscataquis County — Fish for Trout, Salmon, Bass, and Pickerel. Hunt for the white tail deer. Enjoy Flatwater Canoeing, Hiking, and Nature observation.

• Sportfishing Trips to Lake Ontario, N.Y. — Fish for trophy Salmon and Trout.

Call or write for further information:

Edward Nickerson, Reg. Maine Guide
R.F.D. # 1 Box 626, Sangerville, ME 04479
Tel. (207) 564-8902

Member of the
Maine Professional Guides Association

CENTRAL MAINE OUTFITTERS



Guided bear and deer hunts.

Bear over bait.

One hundred percent effort for a
successful hunt in this high density area.

Specializing in bow hunting.

Jeff Sincyr

Madison, ME 04950

207-696-8265



Paul Knaut

DON'T BUY ANOTHER T-SHIRT OR SWEATSHIRT UNTIL YOU READ THIS

From out of the Maine woods, Berg has something great. Novelty advertising that works, at prices that cannot be beat. Berg brings big savings on T-shirts. Here's a dramatic way to promote interest in your business, club or organization. These American-made T-shirts are a 50-50 blend of cotton polyester. For enduring value at tremendous savings, order your T-shirts from Berg today. Should you have any questions or need further assistance, please don't hesitate to call our toll-free number in Maine.

**WE HAVE MORE THAN
20 MAINE DESIGNS**
available to Maine retail stores

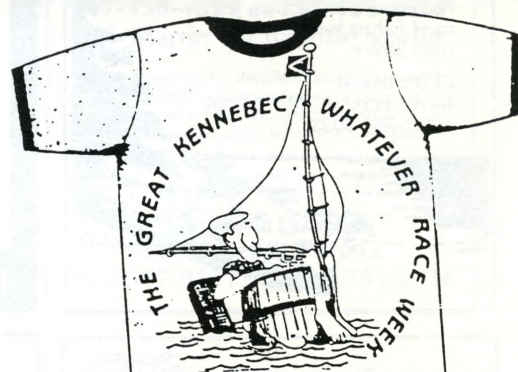
- DEER ■ LOON ■ TROUT
- BEAR ■ OWL ■ EAGLE
- MOOSE ■ BOBCAT
- "50 MILES FROM NOWHERE"
- POTBELLIES ARE BACK IN STYLE IN MAINE

ASSORTED COLORS — FREE DESIGN
Send for free 8-page illustrated catalog

Berg Enterprises will visit any store in the State if you call.



INTRODUCTORY OFFER
**PERSONALIZED-
Silk Screened**



\$3.25 EACH
Minimum Order 3 Dozen



Toll Free Number in Maine
1-800-242-2374
Outside Maine 207-278-7740

**BERG
ENTERPRISES**

RFD #2, BOX 3320, ROUTE 7
DEXTER, MAINE 04930

Baskahegan Camps and Dining Room

U.S. Rte. 1
Brookton, ME 04413



**Unlimited Hunting
and
Fishing Opportunities
Along With Plenty
of Good Home Cooked
Food in the Main
Dining Room**



Omer & Judy Cropley
1-207-448-2405

MAINE WILDERNESS CANOE BASIN



**COMPLETE
CANOE OUTFITTERS
CABINS AND CAMPING**



Vacation center on Pleasant Lake for canoe trips into Washington County Wilderness Waterways and the Grand Chain of Lakes. Wilderness housekeeping cabins and tent sites. Swimming; fishing for salmon, trout and bass. Excellent hunting for deer, bear and partridge. Open year round. Transportation arranged from Bangor Airport to camp.

MAINE WILDERNESS CANOE BASIN

Box M, Springfield, Maine 04487
Phone 207/794-3700

RUSSELL'S GUIDE SERVICE

RFD #2
Milo, ME 04463
207/943-2840

BEAR — Hunt for your trophy in a very high success area.

DEER — Many trophy bucks taken here each year.

MOOSE by permit — my camps are located in the southern zone.



All my camps have hot water showers and toilets. If you are planning a hunt in Maine give me a call, I can give you information on any type of hunt you wish.

**Fishing Trips
Bass - Salmon - Trout
Winter or Summer
All Equipment Furnished**

Please call or write for free brochure.

DOUG RUSSELL

Reg. Maine Guide

“HUNT WITH THE BEST”

CANAL SITE CAMPS

Grand Lake Stream
MAINE



Excellent
Hunting

Guides
Available

Plenty of
Good,
Dry Wood

Cozy Housekeeping Cottages

VINNIE & GINNIE GRACEFFA, Proprietors
Grand Lake Stream, ME. 04637 207-796-2796



*Hunting and Accommodations at its
Best in Washington County*

continued from page 11

excellent bass fishing and, in the spring, good salmon and trout fishing.

In the center of the region lie Cobbosseecontee and Maranacook lakes, among Maine's best largemouth bass waters. Nearby, near Wayne, are Androscoggin and Pocasset lakes. A long chain of smaller lakes affording very fine bass fishing extends through the towns of Readfield, Fayette and Mount Vernon.

East of the Kennebec, but still a part of this general region, is a series of good fishing waters extending down to the coast. Some of these waters extending down to the coast. Some of these waters, well-known to the angler, are Webber Pond, Three Mile Pond, China Lake, Sheepscot Pond, Damariscotta Lake, Biscay Pond, St. Georges Pond, Megunticook Lake and Pemaquid Pond. These offer a variety of bass, trout, salmon, and togue fishing.

Excellent roads and a variety of campgrounds and motels dot this area. (For location see sec. 11 of fishing map.)

12

SEBAGO LAKE, LONG LAKE and OXFORD COUNTY REGION

(Salmon, trout, smallmouth bass, white perch)

Sebago Lake, the second largest lake in Maine, is the central point for this region that encompasses a great part of southern Maine.

Sebago is one of the best known lakes on the North American continent. It is one of the original habitats of the landlocked salmon. It is the first major body of water to free itself of ice in the spring and, as a consequence, the Maine fishing season starts here each year on the first of April. Thousands of anglers throughout the country await the word that Sebago is open, thus heralding a new fishing season.

Salmon fishing at Sebago is truly excellent during the entire spring and again in the fall. During the summer fine bass fishing is to be had. Sebago also now offers good togue fishing, thanks to a recent introduction of this deep-dwelling species by the Inland Fisheries and Wildlife Department.

What is true of Sebago is, in general, also true of the many other bodies of water that make up the region. Each holds the affections of hundreds of anglers.

To the north, connected to Sebago by the beautiful Songo River, is Long Lake. In the same region are Brandy Pond, Highland Lake, Woods Pond, Crystal Lake, Thomas Pond, Lake Pennessseewassee and Moose Pond.

A few miles to the west of Sebago are Peabody Pond and Hancock Pond. Towards the east are Panther Pond and Little Sebago.

Towards the northwest is beautiful Lake Kezar, a rare jewel of a lake, nestled in the foothills of the White Mountains.

South of Sebago, in York County, lie Bunganut, Crystal, Kennebunk, Mousam and

other lakes that have a wide following among visitors to the state.

This whole region also has a network of brooks and streams that furnish good fishing. Good roads lead from one lake to another in this region which also is characterized by a wealth of accommodation for the sportsman and vacationer. (For location see sec. 12 of fishing map.)



SOUTHMEADOW

Enjoy these comfortable housekeeping cottages on Boyden Lake, Perry, the friendly, informal atmosphere, the wilderness quality of two miles of privately owned shorefront. Excellent fishing, swimming. Boats to rent. Five miles from coast and salt water fishing. Rates on request.

Alice and Ralph Otis
Winter: (207) 853-2322
Perry, Me. 04667
Summer: (207) 726-4259
Perry, Me. 04667



LEEN'S LODGE

MODERN LUXURY IN

THE MAINE WOODS

Drive or Fly • May-October
Excellent facilities for
business and group meetings

Lakefront Cabins
Downeast Home Cooking
Plus Lakeshore Cookouts

Enjoy fishing, boating, canoeing,
swimming, hiking on nature trails,
bird watching, photography or
just plain relaxing.

P.O. BOX 40HF
GRAND LAKE STREAM
MAINE 04637
Summer (207) 796-5575
Winter (207) 947-7284



LAKESIDE INN & CABINS

Box 36

PRINCETON, MAINE 04668

In the famous

GRAND LAKE, BIG LAKE, ST CROIX REGION.

Bass
Trout
Salmon
FISHING

Deer
Bear
Birds
HUNTING

The Inn has large comfortable rooms and Home cooked meals.
Choose from either American Plan or fully equipped housekeeping cabins.

Hosts: Charlie and Betty Field • Boats - Motors - Guides - Licenses • Phone: 207-796-2324

fish...
hunt...
and
relax.
at



Nicatous Lodge & Camps

BURLINGTON, MAINE 04417
Telephone (207) 794-6991

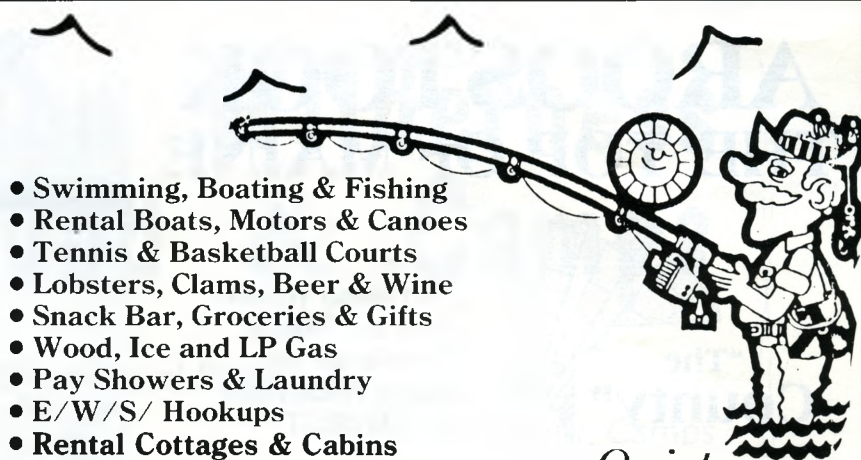
The Hideaway on

Pocomoonshine Lake

South Princeton, Maine 04668

Fishing • Hunting • Vacations
Housekeeping Cottages
May - November

Call or Write
Mary Wallace
207-427-6183



- Swimming, Boating & Fishing
- Rental Boats, Motors & Canoes
- Tennis & Basketball Courts
- Lobsters, Clams, Beer & Wine
- Snack Bar, Groceries & Gifts
- Wood, Ice and LP Gas
- Pay Showers & Laundry
- E/W/S/ Hookups
- Rental Cottages & Cabins

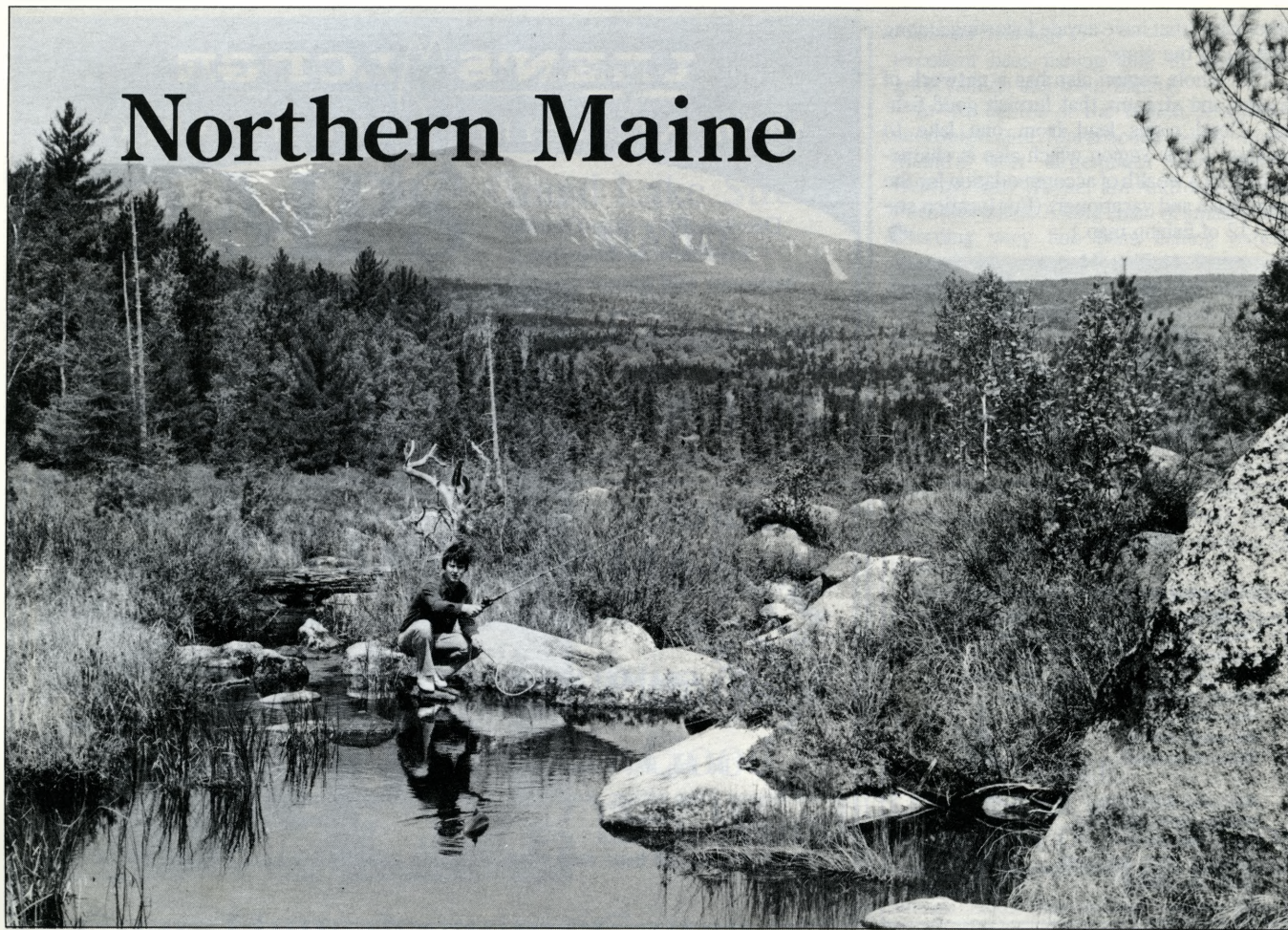
Quiet,
Wooded Sites
on Beautiful Pemaquid Lake

Lake Pemaquid Camping



Lake Pemaquid Camping
Box 967, Damariscotta, Maine 04543
Tel. 207-563-5202

Northern Maine



AROOSTOOK THE TOP OF MAINE



Come. . .
Fish these Waters;
Hunt our Woods.
Experience the
Maine Wilderness
AT ITS BEST!



Write for your free guide to the top of Maine from any of these chambers.

ASSOCIATION OF AROOSTOOK CHAMBERS OF COMMERCE

Caribou Chamber of Commerce
111 High Street, P.O. Box 357
Caribou, ME 04736
207/498-6156

Eagle Lake Chamber of Commerce
P.O. Box 287
Eagle Lake, ME 04739
207/444-5999

Fort Fairfield Chamber of Commerce
79 Main Street, P.O. Box 607
Fort Fairfield, ME 04742
207/472-3381

Fort Kent Chamber of Commerce
P.O. Box 430
Fort Kent, ME 04743
207/834-5178 or 834-5354

Houlton Chamber of Commerce
109 Main Street
Houlton, ME 04730
207/532-4216

Limestone Chamber of Commerce
P.O. Box 361
Limestone, ME 04750
207/325-4025

Madawaska Chamber of Commerce
P.O. Drawer A
Madawaska, ME 04756
207/728-7000

Presque Isle Area Chamber of Commerce
572 Main Street, P.O. Box 672
Presque Isle, ME 04769
207/764-6561

Van Buren Chamber of Commerce
65 Main Street
Van Buren, ME 04785
207/868-2886 or 868-5059



Housekeeping Camp Rentals

"Like Owning Your Own Camp In Remote Maine"

These beautiful NEW insulated log camps on Spider, Cliff, & Haymock Lakes give you privacy and outdoor living at its best.

- Hunt Bear, Deer, Moose, Grouse
- Fish Brook Trout, Lake Trout, Whitefish
- Canoe the Allagash River
- Ice fish Chamberlain, Big Eagle, Churchill
- VACATION "lake-side"... listen to the loons!
- Enjoy a plane ride over the scenic Allagash Wilderness

For more information contact:
Sharon and Jack McPhee
P.O. Box B-P, Patten, Maine 04765
207-528-2136

BIG MACHIAS LAKE CAMPS

Ivan & Peggy Porter
Ashland, Maine 04732
Tel. (207) 435-6977

Housekeeping Cabins,
Fully Equipped, located
on Big Machias Lake,
west of Ashland.

WHEATON'S LODGE and CAMPS

Fishin' ... not Wishin'

Spednic and East Grand Lakes offer you the nation's best SMALLMOUTH BASS and LAND-LOCKED SALMON fishing. Excellent homecooked meals served in our central dining room. Your private cottage on the lake. Five minute walk to New Brunswick border. Boats, motors, guides. Write us or telephone for more information.

Dale and Jana Wheaton
Forest City, Maine 04413
(207) 448-7723
In winter (207) 843-5732

SALMON & BASS FISHING AT ITS BEST!!

ON EAST GRAND AND SPEDNIC LAKE. FULLY EQUIPPED HOUSEKEEPING COTTAGES, BOATS, MOTORS, LICENSES, BAIT, TACKLE & GUIDES. CALL OR WRITE NOW FOR THE FISHING TRIP YOU HAVE DREAMED OF ALL WINTER.

THE VILLAGE CAMPS

LANCE & GEORGIE WHEATON, FOREST CITY, ME 04413, (207) 448-7726



LIBBY CAMPS SERVING SPORTSMEN SINCE 1890

"As Near to Home as We Can Make It"

- Home Camps
- American Plan
- Outpost Camps
- Housekeeping
- Guide Service
- Summer Rates

Your Hosts:

Matt & Ellen Libby
Drawer V, HF, Ashland, Maine 04732
Tel. 207 435-8274 or 6233

Matagamon Wilderness Campground & Camps

On the East Branch of the Penobscot River

P.O. Box 220F
Patten, Maine 04765
Answer Service 207-528-2448

- Fish for – Brook Trout – Salmon – Togue – Whitefish River – Lake – Walk-in Ponds
- Hunt – Deer – Bear – Moose – Coyote – Grouse
- Winter – Ice fish – Snowsled – X-Country Ski
Winter Coyote hunts over bait.
- Guided Trips Available
- Hiking – Canoeing – Boating – Whitewater Tubing

Your Hosts: Donald, Diana, Alan Dudley

Housekeeping Camps

Riverside Campsites

Located on
Northern Entrance to
Baxter State Park





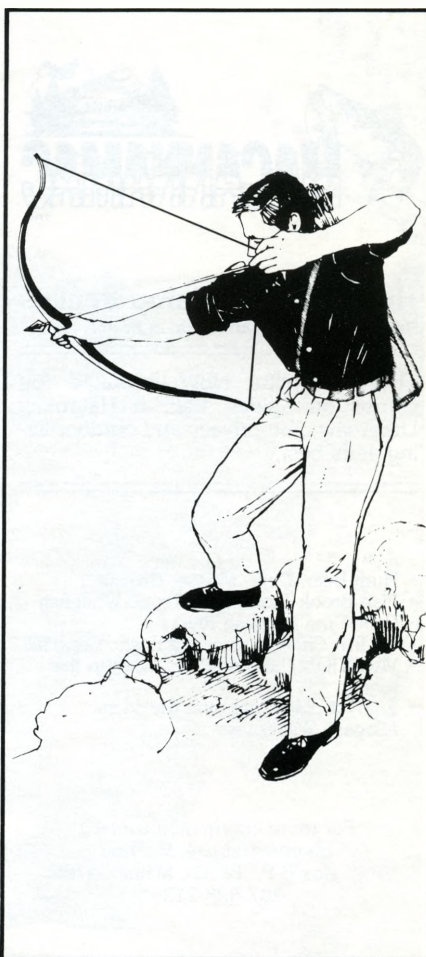
TROPHY GAME

- BEAR
- DEER
- MOOSE
- COYOTE
- GROUSE
- VACATIONS
- FISHING

GUIDE SERVICE & LODGE

John H. Schmidt
Reg. Maine Guide

(MG) Box 288
Island Falls, Maine 04747
1-207-463-2662



A YEAR ROUND SPORTING CAMP AND COUNTRY INN

FALL HUNTING — Packages for Bear, Deer, Moose and Birds.
WINTER SPORTS — Ice Fishing at the door, Snowmobiling, Cross-Country Skiing, Maintained Trails, Equipment Rentals Available.
SPRING FISHING — Trout, Salmon, Bass and Togue, ask about our VIP Trips.
SUMMER FAMILY VACATIONS — American Plan or Housekeeping.

**MT
CHASE
LODGE**

For information call or write:

Rick Hill
Box 281-G
Patten, ME 04765
207-528-2183



**South
Branch
Lake
Camps**

Seboeis, Maine 04484
Tel. (207) 732-3446

HUNTING AND FISHING

in



MAINE



**Specializing in
BASS, DEER and
GROUSE**

SERVICES

American Plan Camps
Housekeeping Camps



ALLAGASH SPORTING CAMPS

Bob & Lois O'Leary
Box 169A
Allagash, Maine 04774
207/398-3555

PARTRIDGE—DEER—BEAR

Meals and guides available.
Call or write for free brochure.

Camping - E. Grand Lake Greenland Cove Campground

- Excellent Fishing • Sandy Beach
- Boat Ramp • Dock • Water & Electric Hookups • Groceries
- Boat Rentals

3 miles south of Danforth, Me. on Rt. 1
Halfway between Houlton and Calais

Opens ice out (est. May 1st)-Oct. 1

E. Grand Lake, Danforth, Me 04424
207-448-2863 or 207-532-6593

RIDEOUT'S ON BEAUTIFUL EAST GRAND LAKE

LODGE & COTTAGES
DANFORTH, MAINE 04424

Lovely Lakeside Setting

SPRING FISHING

Excellent Bass, Salmon & Lake Trout Fishing
Guide Service — Boat & Motor Rentals
Tackle Shop — Non-Resident Licenses — Bait Gas — Johnson Motor Sales — Plenty of Docking Space
Housekeeping or American Plan Available

FALL HUNTING

Bear — Deer — Moose — Coyote
Woodcock — Partridge — Rabbit
Highly successful guide service.

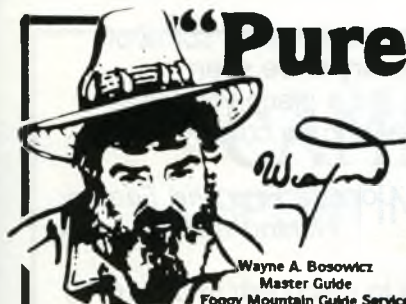
Hunting season we offer an American plan which includes clean, heated cottages, hot showers in every cottage, three meals a day served family-style, or we can pack you a lunch if you prefer. Try us once and we are sure you will return again and again.

Reservations: April-Dec. 207 448-2440

Jan.-March 617 892-8309

Resident Manager, Raymond Thibeault

Call or Write for Free Brochure



Wayne A. Bosowicz
Master Guide
Foggy Mountain Guide Service

"The Maine woods are full of game - I mean real trophies. But, most of 'em smell you long before you ever even see them. One whiff of you and they're history. I first developed Pro-Cover to give my hunters an extra edge and it does the job. Pro-Cover hides your scent completely. It'll get you so close to game it'll scare you. You need to try some this fall and see for yourself."

FOGGY MOUNTAIN SCENTS & LURES



Try Pro-Cover and the Complete
Foggy Mountain Line of Hunting Scents & Lures
Call or write for Free Brochure.

Johnson & Company

WILDERNESS PRODUCTS, INC.

146 Parkway South, Brewer, Maine 04412 • 207-989-3555

Call Toll-Free - 1-800-527-6766

MADE IN MAINE

PENNSYLVANIA

I've been deer hunting in Pennsylvania since I got home from my bear hunt and have had good success with "Pro-Cover" ... I haven't had a deer wind me yet! I have confidence in it. I've seen it work!

Michael Britter Shermans Dale, PA

MICHIGAN

I've hunted and studied whitetail deer for 35 years and found Pro-Cover to be the best camouflage scent I've found yet.

Ed Erickson, III Iron River, MI

WISCONSIN

It was because of your "Deer Lure" that I bagged an excellent buck (an incredible 200 lbs. field dressed!) It blows away Tinks #69, Deer Formula, Buck Stop, Indian. It blows them all away. I'm never going to use anything else!

Russell F. Weip, Three Rivers Guide Service, Hazel Green, WI

WASHINGTON

I took a fine mule deer buck and bull elk in Washington's Cascade Mountains. Both times I was wearing Pro-Cover and both times the animals were coming directly at me—completely unaware. I believe you have developed an exceptional masking scent that does exactly what its supposed to do. In this day and age, that's a rare find!

Terry Sheely Edmonds, WA

GEORGIA

By the way, I used "Pro-Cover" with good results this year. I got 5 bucks and two gobblers!

Mike Shanks Valdosta, GA

I used Pro-Cover during this archery season and was quite impressed. I had deer on the ground within 15 minutes after I walked in and many approached from downwind. Not once did one wind me. I ended up with a doe and a decent buck. There's no question Pro-Cover helped me. Anyone who uses it will certainly buy it again.

Rod Blake Marietta, GA

WEST VIRGINIA

I feel that my 250 lb Bruin taken over bait with the .41 mag was not by accident. The direct credit goes to my use of Pro-Cover.

Jim Jarrett Shinnston, WV

I've tried every deer scent there is. Pro-Cover is the best. I recommend it to all West Virginia hunters.

Hallie Mohon Kenova, WV

NEW YORK

Two of my customers recently returned from a Foggy Mountain Bear Hunt and couldn't say enough about Pro-Cover. I'd like to sell it in my store.

Bill Pritchard B & F Archery Sardinia, NY

MONTANA

I am the type of person that will try to explain away certain results etc., but after 3 episodes with mule deer I'd have to say that Pro-Cover really gives a person an advantage in getting close to game without spooking it.

Paul Schneider Miles City, MT

Available at: L.L. Bean, Kittery Trading Post and sporting goods stores throughout Maine.

NESOWADNEHUNK LAKE Wilderness Campground



Baxter State Park Region

FLY FISHERMAN'S PARADISE
14-18" Brook Trout Taken Daily

**Tent and Trailer Sites – Lean-tos
Cabins – Boat Rentals – General Store**

Here's what Sports Writers have to say:

"The hatches at this time of year (July) are legend, and the fishing can sometimes be frantic . . . the green drakes are roughly the size of hummingbirds."

— John Wilson, *Maine Sportsman*,
June and July 1986

"The fishing got better and better as the month (September) progressed . . . strikes on almost every cast were had. Fish were not landed on every cast, but they were there and the action was memorable."

— John Wilson, *Maine Sportsman*, Sept. 1986

"Nesowadnehunk Lake, a water so fertile and productive some fisheries biologists have nicknamed it 'the trout factory.'"

— Ken Allen, *Fly Fisherman*, June 1984

"The lake is remote, surrounded by some of the most beautiful scenery to be seen anywhere in the East. It's a place you fall in love with; you don't need to be coaxed to return."

— Dave O'Connor, *Fins and Feather
Fishing Annual*, 1984

On Nesowadnehunk Lake — "Anyone putting in his time should be able to catch fish in the 10-15 inch range. Bigger trout are a definite potential."

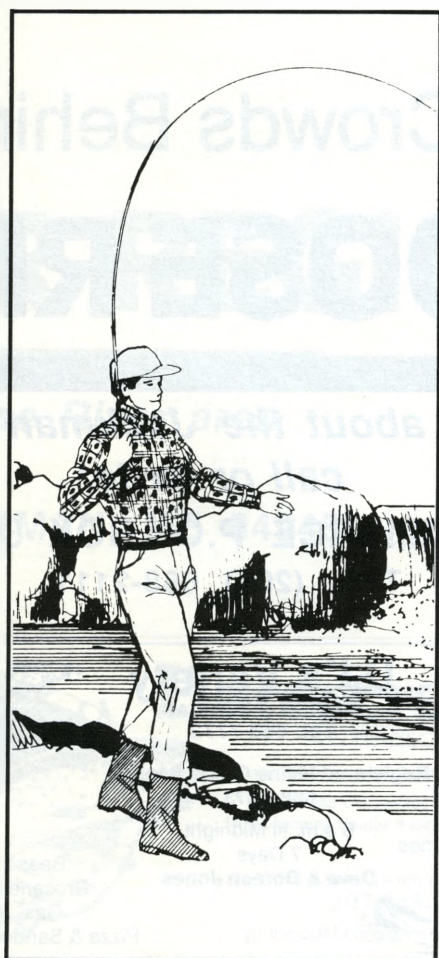
On Nesowadnehunk Stream — "I saw thousands of trout. I caught a couple hundred of them."

— Harry Vanderweide, *Maine Sunday Telegram*, June 24, 1984

***IF YOU HAVEN'T FISHED NESOWADNEHUNK LAKE
YOU'VE BEEN MISSING SOMETHING SPECIAL!***

**Please write or call —
We'll be glad to
help you plan your
next fishing trip!**

**Jim and Beth Mahoney
P.O. Box 148PB
Millinocket, ME 04462
207-723-6329**



PRAY'S Cottages & General Store



ENJOY MAINE'S OUTDOORS WITH US.
OVER A QUARTER OF A CENTURY
SERVING THE OUTDOORSMEN OF AMERICA

Charles & Nancy Pray
(207) 723-8880

101 Morgan Lane
Millinocket, ME 04462

"REMEMBER THE ONE THAT GOT AWAY? . . . WE'VE GOT IT IN OUR KITCHEN!"

Restaurant: Serving a fabulous array of fresh Maine Seafood.
Lounge: Live Entertainment — Dancing — Happy Hour — Wed., Thurs., Fri. & Sat.
Scenic: Mt. Katahdin, Baxter St. Park — over 200,000 acres of wilderness.
Fishing: Our area is well known for its superb Trout and Salmon fishing.
Recreation: Whitewater rafting, hunting, camping, hiking, boating, swimming.
Snowmobiles welcome, connection to the inter-state trail system outside our door.
Accommodations: 54 Modern, air conditioned rooms with FREE HBO.

HERITAGE MOTOR INN

"We want to see you again . . . and our service proves it."
935 Central Street, Millinocket, Maine 04462. (207) 723-9777

CAMP PHOENIX A SPORTING CAMP SINCE 1900 ON



NESOWADNEHUNK LAKE

All modern conveniences in Housekeeping and American Plan Cabins
on Baxter State Park Perimeter Road in Beautiful Northern Maine.

IDEAL FAMILY FUN!

FISHING — Fly fishing for brook trout at its best!
HIKING — Beautiful Park trails for your hiking pleasure
SWIMMING — Cool, clean, spring-fed lake for your enjoyment
BOATING — Canoe or sail and enjoy the tranquil Maine waters
HUNTING — Moose, deer, bird and rabbit
SCENIC VIEWS — Breathtaking scenery
MOOSE WATCHING — Beautiful wilderness, bring your camera
BOAT RENTALS — Fishing boats, canoes,
and sailboat available

OFF-SEASON RATES —
CHILDREN FREE JULY & AUGUST
(Limit 3 children FREE per family)

Write us for a Free Brochure
Dick and Carolyn LeDuc
P.O. Box 210 • Millinocket, ME 04462
Tel. (207) 695-2821 (via radio)
(207) 365-7229 (winter)



Leave the Crowds Behind: JACKMAN-MOOSE RIV

*For more information about the Jackman -
call or write:*

**JACKMAN CHAMBER OF COMMERCE P.O. BOX 368M,
TEL. (207) 668-2111**



THE LAST RESORT

secluded

**LODGE
AND
CABINS**

ON LONG POND, JACKMAN, MAINE

FREE
COLOR BROCHURE

FISHING - Salmon & Brook Trout
HUNTING - Trophy Bear & Deer
VACATIONS - 4 Seasons Recreation

Box 777
JACKMAN, ME 04945
(207) 668-5091

HOUSEKEEPING
or
AMERICAN PLAN



DJ's Variety

Main St., Jackman
Tel. 668-7773

**Registered Maine Guide Service
668-7773**

Hunting, Fishing
Camping
Supplies & Accessories
Live Bait

6 a.m. til Midnight
7 Days
Dave & Doreen Jones



Beer
Groceries
Gas
Pizza & Sandwiches



A. LESSARD REALTY, INC.



Specializing in
Residential, Commercial
Waterfront Acreage

(207)668-2071

P.O. BOX 557, JACKMAN, ME 04945

EACH OFFICE INDIVIDUALLY OWNED AND OPERATED

Cozy Cove Cabins

(OPEN YEAR ROUND)

- Modern Cottages
- Lake Front on Big Wood Lake
- Private Beach, Boats and Motors
- Trout and Salmon Fishing
- Deer, Grouse, Hare and Coyote Hunting
- Black Bear Hunts



LEROY & DIANNE BAKER
P.O. BOX 370MS
Jackman, ME 04945
207-668-5931

TUCKAWAY SHORES

LAKESIDE CABINS
OPEN YEAR ROUND

Housekeeping Cabins on Big Wood Lake
Modern Facilities • Cable TV.
American Plan Available • Cooking by Gourmet Chef

FISHING — HUNTING — BOATING
VACATIONING
SNOWMOBILING — SKIING

Come to the "Switzerland of Maine"

Your hosts...Phil & Paulette Thomas
HCR 64 Box 44HFG, Jackman, Maine 04945
(207) 668-3351



SALLY MOUNTAIN CABINS

In The "Switzerland of Maine"

- Large Housekeeping Cabins on Big Wood Lake
- All modern facilities including TV
- Excellent Trout and Salmon Fishing
- Boats - Motors - Canoe - Bait - Licenses - Guide Service
- Wilderness Canoeing - Swimming - Golf

OPEN YEAR ROUND

Howard & Linda Gibbs, Box 50M, Jackman, Maine 04945 • 207-668-5621

MOOSE RIVER LODGE & MOTEL

(207) 668-5311

Main St. — P.O. Box 641
Jackman, ME 04945

Hunting - Fishing - Whitewater Rafting-
Float Plane Trips & Golf Nearby - Snowmobiling

* Home Cooked Meals

For Reservations — Call or Write
Families & Groups Welcome
VISA & MASTERCARD WELCOME



PINE TREE CABINS

Housekeeping Log Cabins on Long Pond
FAMILY VACATIONS

Fish for brook trout and salmon on Long Pond and
Moose River. Hunting for grouse and trophy
whitetailed deer.

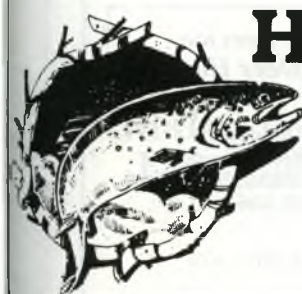
WRITE OR CALL: Lee & Pat Rankin
Box 651, Jackman, ME 04945
(207) 668-7603



ER REGION

Moose River area

JACKMAN, ME 04945



Hardscrabble

WILDERNESS CABINS & LODGE

- Lake Trout • Brook Trout • Landlocked Salmon
- Remote and Uncrowded • Modern Facilities
- Housekeeping Cabins • Delicious Home Cooking

WALT AND DAVE MINARD • BOX 12, JACKMAN, MAINE 04945

207-243-2946

please call between 7 - 10 am or 4 - 7 pm

COLEMAN'S FLYING & GUIDE SERVICE

Specializing in Float & Ski Bush Flying

Fishing
Hunting
Sightseeing

Photography
Supply Delivery
Forest Reconnaissance



Star Route 76 Box 102 Jackman, ME 04945 Phone: (207) 668-4436

JACKMAN MOTEL

Main Street
Jackman, ME 04945

Cable, Color TV Some Efficiencies
Hunting - Fishing



Your Hosts:

Jack & Diane Gilboe
Reg. ME. Guide

207-668-5051

Visa - Mastercard

STEWART'S Housekeeping Camps

Reasonable Rates

Hunting - Fishing - Snowmobiling - Vacationing
Open Year Round

HCR 76, Box 100 HFG, Jackman, ME 04945

Telephone (207) 668-4000

Doreen Jones

Proprietors

David Jones

Reg. Maine Guide

Old Fashion Cheese

Printed Shirts



A.L. POMERLEAU'S COUNTRY STORE
"A Real Country Store...!"
668-2131

CROSS OVER THE BRIDGE
JACKMAN, MAINE

Free Coffee — Browsing

Best Wine Selection

Wheelchair Accessible

Penny Candy

Red Buck Sporting Camps



Thomas Doughty — Registered Guide
Box 114, Jackman, ME 04945 (207) 668-5361

HOUSEKEEPING LOG CABINS — TENT AND TRAILER
SITES ON PARLIN POND and STREAM

— MEALS AVAILABLE —

Family vacations — snowmobiling — whitewater rafting — fly fish lots of remote ponds. — Hunt — deer, moose, grouse, hare — Guided bear hunts. "OPEN YEAR ROUND"

Two Lakes Tours

Scenic tour of beautiful Jackman area lakes. Six hours of fun on 28 ft. pontoon boat. Sunbathing, barbeque, outfitting, water skiing, fishing, canoeing, lodging, group tours.

Two Lakes Tours

P.O. Box 117, Jackman, Maine 04945
(207) 668-3981 or (207) 668-5831

MOUNTAIN COUNTRY SUPERMARKET



Open 7 Days a Week

THURS., FRI. & SAT. 'TIL 9 PM

HILLCREST MOTEL and RESTAURANT

- Comfortable Rooms and Excellent Dining
- Color Cable TV
- Guide Service
- Reasonable Rates



Your Hosts: Bob & Pam Webber, Rte. 201, Jackman, ME 04945
Tel (207) 668-2721

We Sell
KODAK
Film

BISHOP'S STORE

MAIN ST. JACKMAN, ME

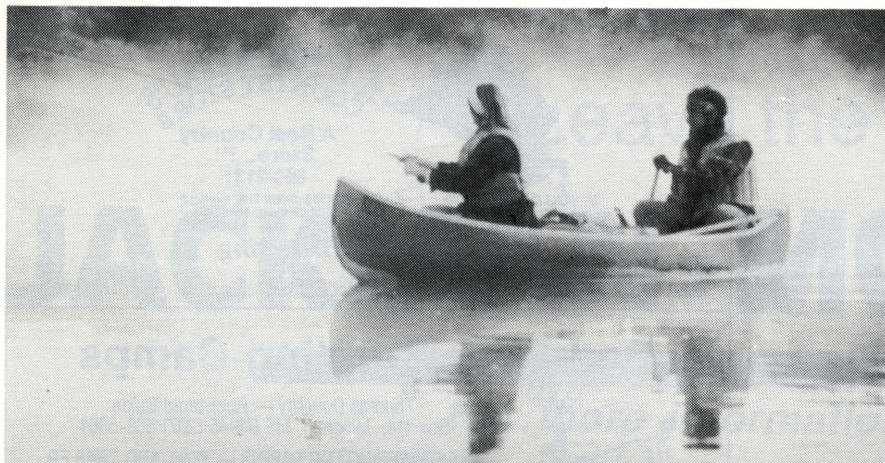


- Sporting Supplies
- Gifts & Souvenirs
- Non-Resident Licenses
- Groceries
- Warm Clothing
- Beer & Wine

OPEN
7 DAYS
A WEEK

"If We Don't Have It, You Don't Need It"

CALL
668-3411
FOR
INFORMATION



THE LAST RESORT *secluded* LODGE AND CABINS

Housekeeping Facilities on Long Lake

HUNTING AND FISHING
WILDERNESS VACATIONS
SNOWMOBILING
WILDLIFE PHOTOGRAPHY
REST AND RELAXATION

BOX 777 HF
JACKMAN, ME 04945
207-668-5091

HARDSCRABBLE
wilderness cabins
and LODGE

A FOUR SEASON WILDERNESS EXPERIENCE

Nestled in the mountains of Northwestern Maine, HARDSCRABBLE is located on beautiful, secluded Spencer Lake. The area offers a variety of hunting terrain.

HUNTING
Deer — Bear — Partridge — Hare

FISHING
Brook Trout — Lake Trout
— Land Locked Salmon

LOG CABIN LODGING HOUSEKEEPING RATES
Delicious Homestyle Cooking AVAILABLE

Walter or David Minard
Box 12 P, Jackman, ME 04945
Tel. 207-243-2946 between 4 & 7 p.m.
Access by 15 mile gravel road or by float plane.

Red Buck Sporting Camps



HOUSEKEEPING LOG CABINS ON PARLIN POND

- Family Vacations
- White Water Rafting
- Fly Fish Remote Ponds
- Sept. Bear Hunts
- Boats — Paddle Boat — Canoes for Rent
- Tent & Trailer Sites
- Lodge — Store — Licenses

Free Guide Service for Fishing & Deer Hunting

Thomas Doughty
Registered Maine Guide
P.O. Box 114, Jackman, ME 04945
(207) 668-5361

OPEN YEAR ROUND

Cozy Cove Cabins

- Modern Cottages
- Lake Front on Big Wood Lake
- Private Beach, Boats and Motors
- Trout and Salmon Fishing
- Deer, Grouse, Hare, Coyote Hunting
- Black Bear Hunts



SR64 Box 370
Jackman, Maine 04945
207-668-5931

ATTENTION SPORTSMEN!!

Vacation - Hunt - Fish in "THE SWITZERLAND OF MAINE"

June - July - August - September

**Fantastic Spin and Fly Fishing
for Native Brook Trout, Salmon
and Lake Trout**



September - October

**Guided Trophy Black Bear Hunts
Extremely High Success Rate**



November

**Hunt our Monster Whitetail Bucks
Record Breaking Seasons
Last 3 Years**



**Large Housekeeping Cabins
on the Shore of Beautiful Bigwood Lake**

All Modern Facilities

12 Channel Cable TV □ Free 24 Hour Movies □ Sports etc.

Low Rates!!!

SALLY MOUNTAIN CABINS

Star Route 64 Box 50R

Jackman, Maine 04945

Tel: 207/668-5621

Tuckaway Shores

LAKESIDE CABINS

COME TO THE SPORTSMEN'S PARADISE
IN JACKMAN, MAINE



HUNT... Our Trophy Size Deer, Native Black Bear and Numerous Moose...

FISH... Land-Locked Salmon, Native Brook Trout and Lake Trout...

VACATION... In "The Switzerland of Maine."

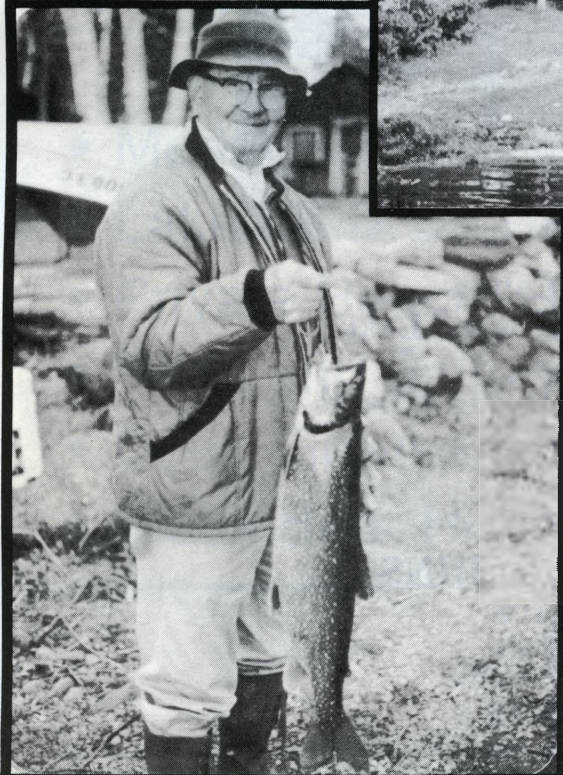


- **Housekeeping Cabins** On Big Wood Lake
- **Modern Facilities** Heated Cabin with Kitchen, Cable T.V., Linens, Towels, Kitchenware Included

- **Hunting Season** American Plan Specials with Meals Prepared by Gourmet Chef

Your Hosts:

Phil & Paulette Thomas
HCR64 Box 44 MGHF
Forest Street
Jackman, Maine 04945
Tel: (207) 668-3351



Big Squaw

\$43⁰⁰ Hunter's SPECIAL

Our comfortable facility is located on the boundary of the Northern & Southern zones, offering excellent bird, waterfowl, and deer hunting.

Special Includes

Lodging, early morning breakfast, box lunch (bring your thermos for coffee), and a hearty dinner, plus use of pool, sauna, game room, television, video films and bar.

Whether you're interested in serious hunting or relaxation, we cordially invite you to join us.



P.O. Box D
Greenville, Me
04441
207/695-2272
1-800-VIA-MSHD

Mountain



**Sandy
Bay
Camps**

landlocked salmon
logue
brook trout
bear
moose
grouse

Housekeeping cabins, docks and waterfront, located on 40-mile long Moosehead Lake. Boat rentals and launching facilities.

Welcoming ice-out fishermen, summer anglers, hunters, north-woods travelers, and families on vacation.

For brochure contact: Gordon Simmons, Sandy Bay Camps
Box 1173, Greenville, Maine 04441 • 207-695-2512

THE CHESUNCOOK LAKE HOUSE

A remote lodge with cottages at Chesuncook Vlg. accessible by Air or Water only.

- * Excellent River, Lake, Stream & Brook Fishing for Salmon & Trout
- * Moose, Deer, Grouse, & Duck Hunting
- * Ice Fishing & Snowmobiling
- * Boats, Motors, Canoes & Guide Service
- * Cross Country Skiing & Wilderness Tours

Bert & Maggie McBurnie
Rt. 76, Bx 655, Greenville, ME 04441
Tel. 207-695-2821

GREENWOOD MOTEL

"Our Family Serving Yours"

- 15 Spotless Units • Full Baths
- TV & VCR Movies • Individual Heat
- Morning Coffee & Muffins • Pool & Golf Course • Shuttle to Squaw Mt.
- Minutes to All Activities
- Reasonable Rates

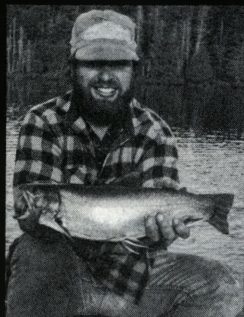
Rt. # 15 Box 307MY Greenville Jct., Me. 04442
Tel. (207) 695-3321



From R.I., CT., MA.,
N.H., N.J., VT., N.Y.
1-800-FOUR-FUN



MOOSEHEAD



THE MOOSEHEAD LAKE REGION

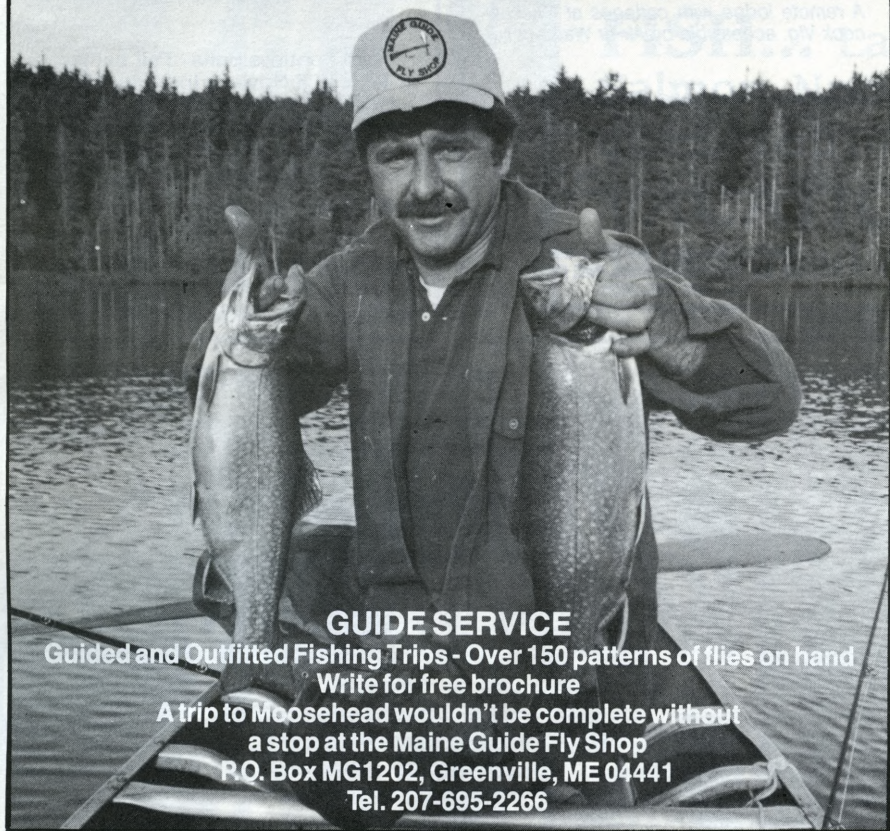
Invites You to Visit Maine's Finest and Most Scenic

Hunt our ridges, mountains, and valleys for Black Bear,
Whitetail Deer, Moose and Upland Small Game.

Contact:

THE MOOSEHEAD LAKE REGION CHAMBER OF COMMERCE

"Serving the Serious Fisherman" Maine Guide Fly Shop



GUIDE SERVICE

Guided and Outfitted Fishing Trips - Over 150 patterns of flies on hand

Write for free brochure

A trip to Moosehead wouldn't be complete without
a stop at the Maine Guide Fly Shop

P.O. Box MG1202, Greenville, ME 04441

Tel. 207-695-2266



Indian Hill Motel

"GATEWAY TO THE
MOOSEHEAD REGION"

GREENVILLE, ME 04441

Quiet, clean, modern rooms with a beautiful view of Moosehead Lake from each unit. Color TVs and morning coffee. Enjoy snowmobiling, ice fishing, and cross-country skiing. Only minutes from Big Squaw Mountain.

YOUR HOME AWAY FROM HOME
"Over 75 Years of Family Tradition"
Open Year-Round

BIG SQUAW MOUNTAIN SLOPESIDE CONDOMINIUMS

- Slopeside living with panoramic views of Moosehead Lake.
- Four types of units available, all fully furnished.
- Marine access to Moosehead Lake.
- Doorstep access to ski trails and lifts.
- Swimming pool, tennis, playground, restaurant/lounge
- Phase I ready this winter.



Exclusively Offered By
GOODWIN REAL ESTATE
P.O. Box 1168 - Main Street
Greenville, ME 04441
207-695-3731



Medawisla

(Formerly Roach River Cabins)

Star Route 76, Box 592, Greenville, ME 04441

Mobile Phone Unit (207) 243-2951

Party Line 5 PM-9 PM

Keep Trying!

Located 28 miles north of Greenville

Housekeeping cabins on 3½-mile Second Roach Pond
Good road to cabins - Nearest neighbors 6 miles away

Fishing - Hunting - Summer Vacations

Call or write Russ and Mimi Whitten

Also Available by 2-way radio through

- Folsom's Air Service (207)695-2821 8 AM-4 PM •



On Moosehead Lake

Wilderness Log Cabins

- Spacious Waterfront Campsites
- Hookups Available • Hot Showers
- Moose Watching • Boat & Canoe Rental • Marina

"Come to fish, explore the wilderness and enjoy a peaceful vacation on Moosehead Lake"

Casey & Nadine LaCase,
P.O. Box 1161, Greenville, ME 04441
207-695-2801

ON CHAMBER OF COMMERCE

st Complete Four Season Recreation Area

Fish endless miles of rivers, ponds and lakes for native (wild)
Eastern Brook Trout, Landlocked Salmon and Lake Trout.

P.O. BOX 581, GREENVILLE, MAINE 04441 • 207-695-2702

MOOSEHEAD



Indian Hill Trading Post & Supermarket

MOOSEHEAD'S LARGEST SPORTING GOODS/GROCERY STORE

GROCERIES • DELI
BAKERY
COLD BEER • WINE
LOBSTERS

In the Trading Post you'll find a large selection of
Ice Fishing Supplies along with **Hunting Gear**.
Just about anything you would need while visit-
ing Moosehead Lake.

- Non-resident fishing/
hunting licences
- Bait
- Topographical Maps
- Expanded Line of Clothing
Name brand fashions by
Wiley's of Ellsworth

Route 15 Greenville

OPEN 7 DAYS A WEEK
8 a.m. - 8 p.m.

695-3376

Sanders

REAL ESTATE

MOOSEHEAD LAKE
P.O. BOX 307
GREENVILLE, MAINE 04441
207-695-3787

Homes • Hunting and fishing camps
Lots • Lakeside cottages
Acreage

Sim's SPORTSMAN'S HIDEAWAY

East Shore North Bay, Moosehead Lake

ENJOY FOUR SEASONS

— OPEN YEAR ROUND —

FISHING — Salmon, Trout, Togue
HUNTING — Deer, Moose, Rabbit, Partridge

For baited bear hunt call for rates and information
Photography, Moosewatching, Hiking, Mountain
Climbing, Snowmobiling

Camps are very secluded and private
Only 4 camps, 2 cottages, 2 log cabins

Boat, motor and canoe rental, Gas & oil
Clean fully equipped housekeeping cabins
(except linens), Flush & Showers

Owners: Emile & Marie Simoneau
welcome you to stay at their secluded camps.
Access by road or boat pick up

Write or call: Emile Simoneau
P.O. Box 211, Rockwood, ME 04478
207-534-7370



Greenville, Maine

Fully Equipped
Housekeeping Cabins
Shorefront and Hillside

Fishing

Catch Trophy Size Salmon,
Togue and Brooktrout
All Season Long

Hunting

Great Deer, Bear, Moose and Grouse
Hunting From Your Doorstep.

♦OPEN YEAR ROUND♦

Guided Snowmobile Trips
Overnight - Full Day - Half Day

Your Hosts Bill and Mary Fling
P.O. Box 1272
Greenville, ME 04441
(207) 695-2860

GENTLE BEN'S



HUNTING & FISHING LODGE

**Trophy
Deer - Bear
Brook Trout - Salmon - Togue
MOOSEHEAD LAKE — Allagash Region**



Trophy
Deer
Taken by
N.H. Hunter

Fishing Trips May & June. Hunt Bear
Sept. & Oct. with Top Grade Hounds
or over Bait. Special Archery Combo
Deer/Bear Hunts in Oct. Moose Hunts.
Trophy Deer Hunts in Nov.



Trophy
Bear
Taken by
N.Y. Hunter

If you are planning a Hunting or Fishing Trip to Maine Try Us. We Provide the best Lodging and Meals, equipment and guides. Hunt and Fish with Maine's most successful Guide and Outfitter.

For more information and references, phone or write for a free brochure.



Successful Weeks Hunt
Bruce Pelletier

Gentle Ben's Hunting & Fishing Lodge

Box 212 MG
Rockwood, Maine 04478
Tel. 207-534-2201
Professional Hunter and Outfitter

Member

N.R.A. — S.A.M. Maine Professional Guide Association
Professional Bow Hunters Society
P.S.E. Outdoors Adventures Approved

Rockwood at Moosehead

Send for your free pack of area brochures.
Write M.L.V.S.A. □ Box FH □ Rockwood, Maine 04478.

*Moose
River*



*Moosehead
Lake*

LINCOLN'S CAMPS

MODERN HOUSEKEEPING CABINS
BOATS • TACKLE • BAIT

Open May 1st for the Spring Salmon Run
with great fishing thru September.

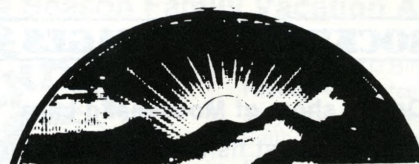
October - Upland Game, Waterfowl and
Bear. November - Deer Season.

For Further Information

LINCOLN'S CAMPS MPB

P.O. Box 295 Rockwood, ME 04478

Tel: 207/534-7741



SUNDOWN CABINS ON MOOSEHEAD LAKE

- Six Shorefront Cottages
 - 1, 2 or 3 Bedroom Units
 - Open Year Round for:
 - Fishing - Vacationing - Hunting
 - Ice Fishing - Snowmobiling - Skiing
- Your hosts - Patrick & Shirley Dubord
P.O. Box 48 FG Rockwood, ME 04478
207-534-7357

WHITTENS'

Moosehead Inn

On Moosehead Lake

Tel. 207-534-7337

Rockwood, ME 04478

A Four Season Inn

- Attention -

**Hunters-Fishermen-Snowmobilers
Special Package Plan Rates**

Home of "The Corner Pocket"
Pub & Games

Your Home Away from Home

Write for Brochure or call 207-534-7337

MODERN, FULLY EQUIPPED WATERFRONT
HOUSEKEEPING COTTAGES, BOATS and
MOTORS, DOCKING, GAS and OIL.

GRAY GHOST CAMPS



ON MOOSE RIVER

In the Moosehead Lake Region

Named after the most used fishing fly in the area.

ROCKWOOD, MAINE 04478

BOX 35

PHONE: (207) 534-7362



Wilson's

ON MOOSEHEAD LAKE

MOOSEHEAD, MAINE 04442

*Located at the world famous EAST OUTLET
on Moosehead Lake*

Headwaters of the Kennebec River

A village of fully equipped housekeeping cottages
for 2 to 20 in the North woods of Maine

A landmark since 1865 — Open Year Round

Owners: Shan & Wayne Snell, Reg. Me. Guide

Tel. (207) 695-2549

Rockwood at Moosehead



Send for your free pack of area brochures.
Write M.L.V.S.A. □ Box FH □ Rockwood, Maine 04478

ROCKWOOD COTTAGES

"On the shore of Moosehead Lake"

Enjoy Maine's best fishing for LANDLOCKED SALMON, TOGUE & BROOK TROUT.

HUNT TROPHY WHITE TAIL,
BLACK BEAR, GROUSE.
COMFORTABLE HOUSEKEEPING COTTAGES

"Your Hosts"

Ron & Bonnie Searles

Boat • Motor Rentals • Bait
Licenses • Guides • Dock
Box 176F, Rockwood, ME 04478
207-534-7725



*Dick &
Lois Mello
Your Hosts*

6 Night Hunting Package Plan

Breakfast - Packed Lunch - Dinner
\$222.⁰⁰ per person. Double occupancy

—BIG BUCK CONTEST—

winner gets black powder rifle

For more info., call or write

Moosehead Motel

P.O. Box 235 □ Rockwood, Me 04478

Tel.# (207) 534-7787

OLD MILL CAMPGROUND AND CABINS on Moosehead Lake

- *Complete shorefront cottages
- *Spacious RV and Tent sites
- *Excellent Docking and Launching facilities
- *Motor Boat and Canoe Rental

Please write or call for more information
about us and our area: P.O. Box 198-FH
Rockwood, ME 04478
Tel. 207-534-7333

RAYMONDS

NORTHEND OF MOOSEHEAD

Hunting – Fishing
Snowmobiling – Portaging
Housekeeping Cabins
Country Store – Flying Services

Write: **RAYMONDS**

**BOX 642WG, NORTHEAST CARRY
ROCKWOOD, ME 04478**

Call **FOLSOM'S AIR SERVICE**

(207) 695-2821 8-5 P.M.

THE BIRCHES ON MOOSEHEAD LAKE

A Four Season Resort

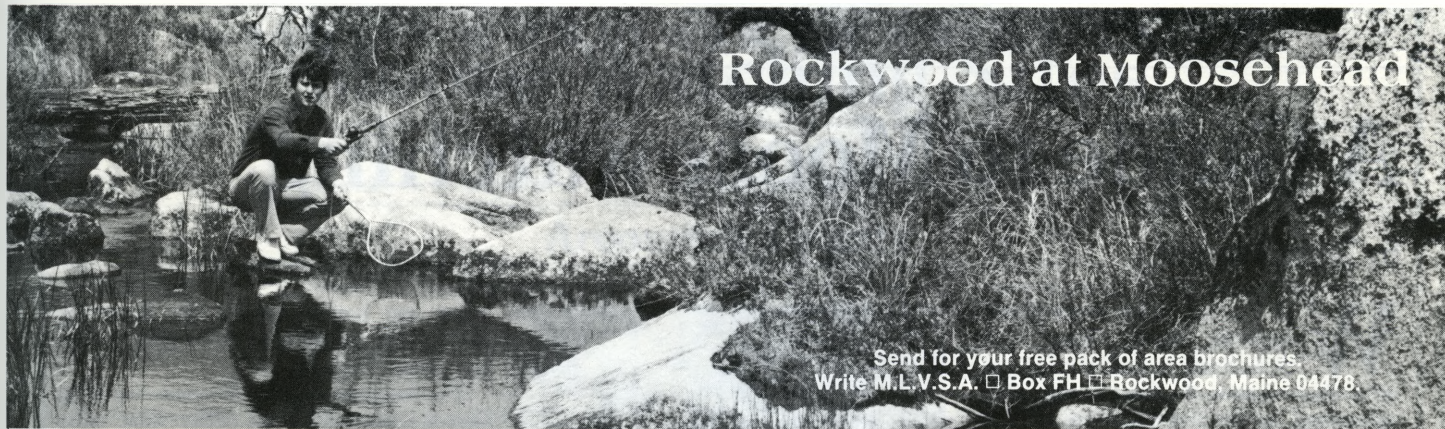
Log cabins and lodge directly on Moosehead Lake. Housekeeping and American Plan. Guide service. Marina. Fish for salmon, togue (lake trout) and brook trout. Family vacations.

NORTH COUNTRY OUTFITTERS

Canoe and raft trip outfitting in the Moosehead-Allagash-St. John regions. Canoes, food, equipment, transportation and guides. Raft the Kennebec and Penobscot Rivers. For brochures write: "The Birches", P.O. Box 81-F, Rockwood, Maine 04478 (207)534-7305

*Hunting Packages, Meals, Guide Service
The Best Hunting & Fishing in Maine*





Rockwood at Moosehead

Send for your free pack of area brochures.
Write M.L.V.S.A. □ Box FH □ Rockwood, Maine 04478.

MT. KINEO CABINS

ON MOOSEHEAD LAKE IN ROCKWOOD

Eight Waterfront Housekeeping Cabins
With Baseboard Heat
Fishing, Hiking, Swimming, Hunting, Boating
Skiing, Snowmobiling, 120' T-Dock, TV
Hookups, Ice Houses, Hot Showers,
Boat- Motor Rentals, Seaplane Rides
OPEN YEAR ROUND

Dick and Elaine Wallingford, your hosts

P.O. Box 115 D
Rockwood, Maine 04478
Tel (207) 534-7744

A 4 Season Family Vacation Area



Hunting —
Bear □ Deer □ Bird
Hiking — Sightseeing
Bicycling — Canoeing
Sailboats — Kayaks
Fishing — Swimming
Moose Watching
Boating - Picnicing
Whitewater Rafting
Skiing - Snowmobiling
Ice Fishing —
Ice Skating

in Barrow Cove on Moosehead Lake, Swimming area with a pebbled beach. Snowmobile access to trails and lake. Dock-Gas-Boat/Motor Rentals-Shower-Laundry Building.

P.O. Box 187 MS Rockwood, Me 04478
207/534-7709

(To preserve nature's tranquility, we do not allow pets.)



Wilderness Lodge and Cottages

*"On Beautiful
Moosehead
Lake"*

Fish for;
Plentiful Salmon
Brook Trout or
Lake Trout

Hunting for; Prime Whitetail Deer,
Bear or Upland Bird.

*"And Relax in your Cozy Log Cabin
on the Shore of Moosehead Lake"*

Tel. 207-534-7712

Steve & Pam Rich

P.O. Box 8MG Rockwood, ME 04478

MAYNARDS CABINS

BOX 99

ROCKWOOD, ME 04478

Tel. 207-534-7703

One of the few places in the
Moosehead Area that serves all home
cooked meals, while you fish for
trophy salmon and togue or hunt
trophy deer.

**One reasonable rate includes cabin
and meals.**

Colored brochure on request.

ABNAKI CAMPS

Housekeeping cottages on
Moosehead Lake

A private off highway setting.
Walking distance to store and
post office.

Boats, Motors, and Canoes available.

Write or Phone for Brochure.

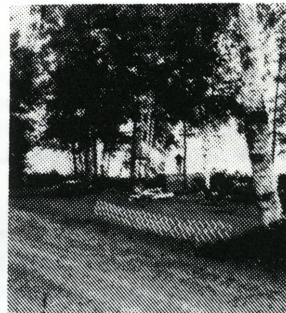
P.O. Box 6

Rockwood, Maine 04478

Phone 207-534-7318



Season: ICE OUT



To 30 Sept.

A Guide to Moosewatching

by Tom Shoener

With the cold water of his favorite northern Maine trout pond threatening to spill over the top of his chest waders, the fisherman watched, astonished, as the first moose he had ever seen in the wild crashed and splashed down the bank and into the water, not fifty feet away — and blocked the nearly-panic-stricken angler's only dry route back to shore.

There I stood, 28 years ago, desiring neither to attempt a swim to safety, nor to challenge the huge bull's right to occupy that particular piece of shore frontage. My armament — a fly rod and a bottle of bug dope — was a poor match for his antlers, which were probably four feet across, but at the time seemed like they might crade a six-foot human frame — one other than mine, I hoped!

It was soon evident, though, that the massive beast was interested only in dining at the aquatic salad bar that fringed the pond. And during the next few memorable moments, until the moose munched his way out of my way, I gained my indoctrination into a lasting pastime of moose watching — albeit as a captive audience.

Most people become moose watchers in a more conventional manner, by going to the moose, rather than having the moose come to them. And they are doing it in increasing numbers. Anyone associated with the tourism business in northern Maine will verify that viewing and photographing moose have become a major spring and summer attraction for vacationers and day-trippers in the Rangeley-Moosehead-Baxter Park regions and points northward.

So numerous are moose in some areas that sightings can be guaranteed, at least at certain times of the year. "A moose a mile" is the average Nancy Pray says her guests regularly see when they explore the roads near her camps at Ripogenus Dam. "It's a sure thing, at least through June and until mid-July," she says.

Watching North America's largest land animal in its natural habitat is an outdoor activity that can be pursued with no special equipment required. Even serious moose watchers will have only a pair of binoculars and a camera, and maybe a canoe.

How big are Maine moose? A good bull will weigh over one thousand pounds, and a real monster can go well over three-quarters of a ton. He'll stand six to seven feet tall at the shoulder and his antlers will measure five feet or more from tip to tip. A good-sized cow moose will be a little shorter and two to three hundred pounds lighter.



Research by the Maine Department of Inland Fisheries and Wildlife indicates that a moose over 10 years old might be considered a senior citizen, while the very oldest individuals may reach twenty.

The best period for moose watching is late spring to mid-summer, when the animals are likely to be seen in and around roads and, particularly, in shallow ponds and boggy places. The common belief is that moose seek the water at this time for relief from the heat and flies, but new research suggests that the real reason is their need for sodium, depleted in their bodies after the long winter. Biologists say aquatic plants fulfill that sodium "hunger" much better than terrestrial moose food.

From late August to mid-September is another good period to see moose at the pond, particularly cows with their calves. Other times moose are where you find them, and this includes everywhere from the deep woods to downtown Portland. One celebrated young bull even stalked around the state capital complex in Augusta two

years ago before making his departure through the garden of an on-looking Governor Joseph Brennan.

The accompanying list of moose watching sites is a sampling of the better ones, most of which are easy to reach by car or canoe. More moose will be seen before 9 a.m. and after 6 p.m., but a visit at any time may be productive. No special techniques are required to become a proficient moose looker, but it's best to remain quiet and partly concealed.

Several words of caution are in order at this point:

- Moose are generally timid, but they should not be startled or approached too closely on land or in the water.
- Cows with calves are often very protective in the early summer.
- During the mating season, in late September and early October, bulls can be aggressive.
- Be constantly alert when driving in moose country. Striking a moose with your car could ruin your whole day — and his!
- Also be alert for logging trucks. Many of the roads in moose country are private, built and maintained by paper companies, but generally open for public use. Give the trucks a wide berth, and pull well out of the road if you stop.

If this quick look has stimulated your interest, by all means give moose watching a try. It's easy, inexpensive, and you're highly likely to succeed — not always qualities of a good hobby, but watching the monarch of the Maine woods is in a category all its own as a pastime. Once you've tried it, you'll agree.



Photographs by Paul Knaut

Moose Watching Sites

SPECIFIC SITE OR GENERAL AREA	ACCESS — ROAD OR WATER	LOCATION/ TOWN	OTHER COMMENTS
Aroostook County			
Portage Lake	water	Portage Lake	Bog area at inlet (west end), by boat or canoe. Floating islands area (west side of outlet, at north end of lake), by canoe only.
St. Croix Lake	road & water	T. 8, R. 4	Twenty-five miles north of Patten. Access by Route 11, then St. Croix Siding Road; canoe access by St. Croix River.
Big Machias Lake	road	T. 12, R. 8	Twenty miles west of Ashland, on Realty Road.
St. Froid Lake	water	T. 14, R. 7	Seventeen miles north of Portage Lake village, off Route 11. Access by canoe or small boat. Moose frequently seen at "Back Channel" of Fish River, at South end of lake.
Mattawamkeag Lake	water	Island Falls	Boat access from the Island Falls Fish and Game clubhouse in Island Falls.
Christina Reservoir	road	Ft. Fairfield	Near Ft. Fairfield-Easton town line, on Conant Road. Best area for moose on north shore.
Baxter State Park Area			
Baxter State Park	Baxter State Park is likely the best-known of Maine's many moose watching locations. Some of the better places in the park to see moose are: Sandy Stream Pond (short walk from Roaring Brook Campground), Dwelley Pond (vehicle access), Russell Pond (seven mile walk), Turner Deadwater (near Russell Pond), Grassy Pond (one mile walk from Katahdin Stream campground, and Tracy Pond (vehicle access).		
Sawtelle Deadwater	water (best) & road	T. 6, R. 7	Eighteen miles north of Patten on road to Baxter State Park. Canoe access at dam.
Penobscot River, East Branch	water	T. 5, R. 8	Canoe downstream from bridge below Matagamon Lake, at northeast entrance to Baxter State Park.
Golden Road and Chamberlain Lake Road	road	west of Baxter State Park	Main roads and side roads in this area are productive moose watching, especially in spring and early summer. This is "moose-a-mile" country. Roads are private but open to the public; keep an eye out at all times for logging trucks.
Route 11	road	T. 4, R. 9	Good stretch along Route 11 in area of Upper Ebeemee Lake, about ten miles north of Brownville Junction.
Moosehead Lake/Jackman Area			
Lazy Tom Bog	road	T. 1, R. 13	Twenty miles north of Greenville on Lily Bay Road; turn left a mile or so beyond Kokadjo; bog is about one-half mile on right. Boat or canoe can be used to explore bog.
roads and clearcuts	road	Smithtown & Frenchtown	These two townships, northeast and southeast of Kokadjo, constitute one large moose watching area. Simply by driving around on the gravel roads, paying particular attention to bogs and side roads into clearcuts, one is very likely to encounter moose.
West Shirley Bog	road & water	Shirley	About five miles south of Greenville, off Rt. 15; travel west a few more miles on access road from town of Shirley.
Penobscot River, West Branch	water	Burbank, T. 4, R. 14, etc.	North of Moosehead Lake, with access at Penobscot Farm, Lobster Stream and Golden Road. Canoe or boat.
Route 201	road	Johnson Mountain Twp. and Parlin Pond Twp.	Best areas at Bean Brook crossing and from Markham Brook to Lake Parlin.
Rangeley Region			
Kennebago Logans	water	Stetson town	From Eustis village, take the Tim Pond Road to the Kennebago River bridge. Canoe downstream one mile to Logans.
Route 16	road	Rangeley to Stratton	Several excellent moose sites along this route.
Route 26	road	Grafton	From Grafton Notch State Park, drive about four miles north the area known as Grafton flats.
Route 4	road	Phillips to Rangeley	
Washington County			
3rd and 4th Machias Lake	road & water	T42MD & T43MD	Access through village of Grand Lake Stream, about 10 miles west on gravel roads.

Index to Advertisers

Allagash		Island Falls		Patten	
Allagash Sporting Camps	39	Bear Creek Guide Service & Lodge	38	Matagamom Wilderness Campground	37
Ashland		Jackman		Mt. Chase Lodge	38
Big Machias Lake Camps	37	Cozy Cove Cabins	44	Perry	
Libby Camps	37	Hardscrabble Lodge	44	Southmeadow Cottages	35
Augusta		Jackman/Moose River Chamber of Commerce Co-op	42, 43	Plaisted	
Sportsman's Alliance of Maine	18	The Last Resort	44	Macannamac	37
Belgrade		Red Buck Sporting Camps	44	Princeton	
Abenaki's Fishing Camps	26	Sally Mountain Camps	45	Lakeside Inn & Cabins	35
Crystal Springs Camps	26	Tuckaway Shore	46	Rangeley	
Dolley's Snug Harbor Camps	29	Kittery		Grants Kennebago Camps	22
Whisperwood Cottages	26	Kittery Trading Post	3	Rangeley Chamber of Commerce Co-op	19-21
Woodland Camps	28	Kokadjo		Rockwood	
Belgrade Lakes		Northern Pride Lodge	1	Gentle Ben's Hunting & Fishing Lodge	50
Belgrade Lakes Region, Inc.	24	Lincoln		Moosehead Lake Vacation & Sportsman's Assoc.	C-3
Castle Island Camps	25	Briarwood Motor Inn	26	Rockwood Area Co-op	51-53
Bingham		Madison		Saco	
Canadian Trail Cabins	16	Central Maine Outfitters	31	Pegasus Deep Sea Fishing	13
Boothbay Harbor		Millinocket		Sangerville	
Cap'n Fish's	13	Camp Phoenix	41	Marr Pond	31
Shark II	13	Heritage Motor Inn	41	Sebois	
Brewer		Nesowadnehunk Lake Wilderness Campground	40	So. Branch Lake Camps	38
Wilderness Products	39	Pray's Cottages	41	Skowhegan	
Bridgton		Milo		Towne Motel	30
Bridgton Lakes Region Chamber of Commerce	18	Russell's Guide Service	33	So. Princeton	
Brookton		No. Windham		Hideaway	35
Baskahegan Camps	33	Aimhi Lodge	15	Springfield	
Burlington		Sebago Lake Lodge	16	Maine Wilderness Canoe Basin	33
Nicatus Lodge & Camps	35	Sebago Trading Post	16	Spruce Lodge Camps	3
Caribou		No. Sebago		Standish	
Aroostook County Chambers	36	Sebago Lake Camps	16	Orion Gun Shed	22
Corinna		Oakland		Sebago Lake Resort & Campground	20
Eastland Woolen Mill	30	Alden Camps	28	Wilson's Mills	
Damariscotta		Bear Spring Camps	27	Bosebuck Mountain Camps	22
Lake Pemaquid Camping	35				
Danforth					
Greenland Cove Campground	39				
Rideout's Lodge & Cottages	39				
Dexter					
Berg Enterprises	32				
Dover-Foxcroft					
Foggy Mountain Camps	C-2				
Stonewood Camps	31				
Forest City					
Village Camps	37				
Wheaton's Lodge & Camps	37				
Forks, The					
Northern Outdoors	23				
Freeport					
L.L. Bean	C-4				
Gardiner					
Dave Kelley Guide Service	30				
Grand Lake Stream					
Canal Site Camps	34				
Leen's Lodge	35				
Gray					
Cole Farms	17				
Greenville					
Big Squaw Mountain	47				
Chesuncook Lake House	47				
Greenwood Motel	47				
Moosehead Lake Region Chamber of Commerce	48, 49				
Sandy Bay Camps	47				
Guilford					
Guilford Industries	30				
Packard's Camps	29				
Two Falls Camps	31				
Hartland					
Wildwood Camps	30				



Bluefish are among the gamest of salt water species in Maine, and normally run 8 to 20 pounds. They're especially fun when taken on light spinning tackle.

Rockwood — Maine Moosehead Lake Region



Fish For

Hunt For

Trophy

LAND LOCKED SALMON

WHITE TAIL DEER

LAKE TROUT

BLACK BEAR

BROOK TROUT

UPLAND GAME

For more information, please write:

**The Moosehead Vacation
and Sportsmen's Association**

P.O. Box F-H

Rockwood, Maine 04478

(207) 534-7300

L.L.Bean®

Welcome the New Hunting Season at L.L. Bean

Suddenly, the air is brisker, trees are changing color and leaves crunch underfoot. Hunters recognize the signals. It's time to gear up for a new hunting season at "the store that knows the outdoors." L.L. Bean has been a tradition with hunters since 1912 when "L.L." designed the first pair of Maine hunting shoes based on his own hunting experience. Today, we still do business the same way. We field test every product we sell to make sure it will stand up to our 100% guarantee of quality. And we still sell products based on our own sporting experience. No wonder hunters have trusted L.L. Bean for more than 75 years.

L.L.Bean®
The store that knows the outdoors.
Route 1, Freeport, Maine

