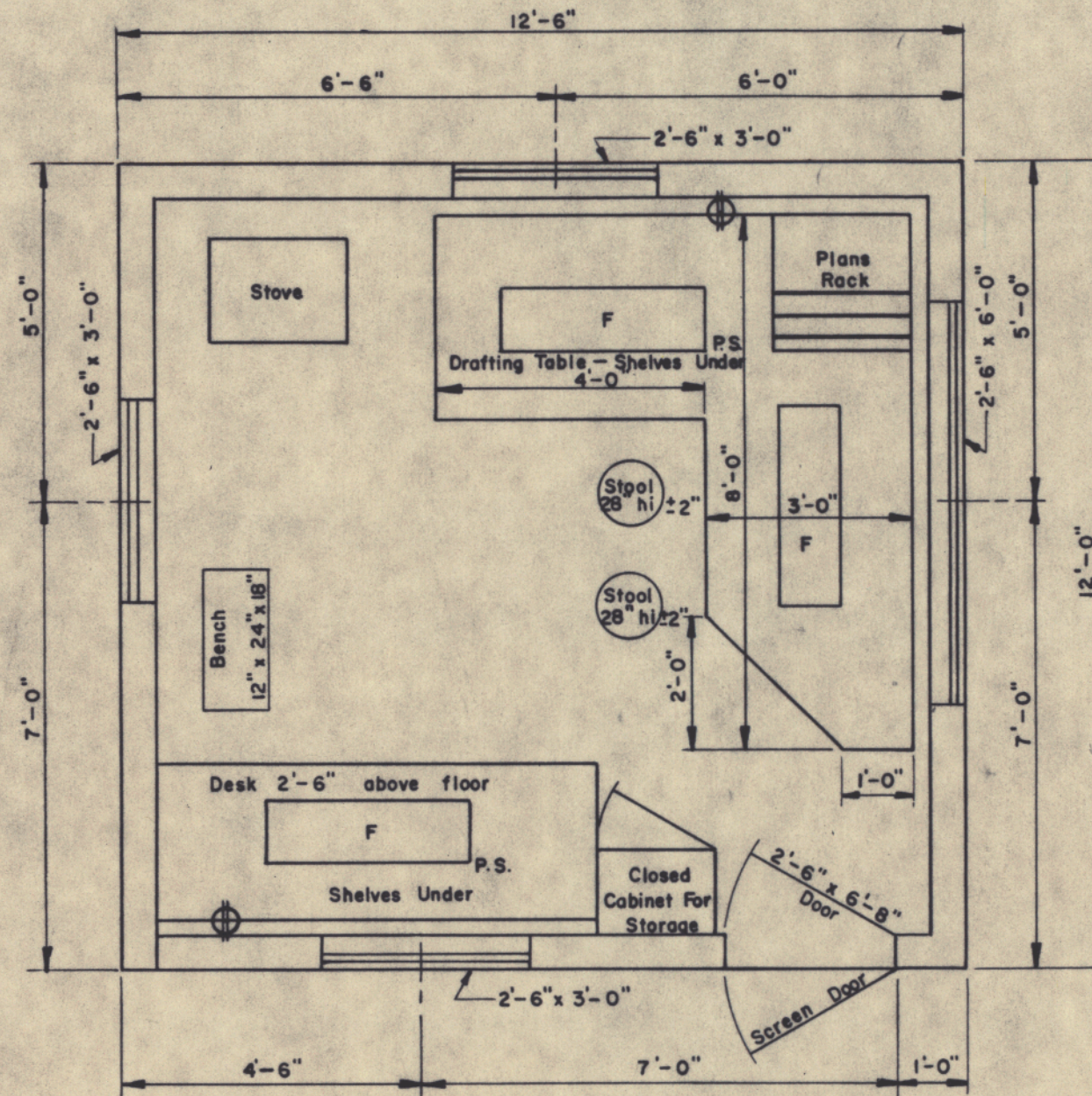
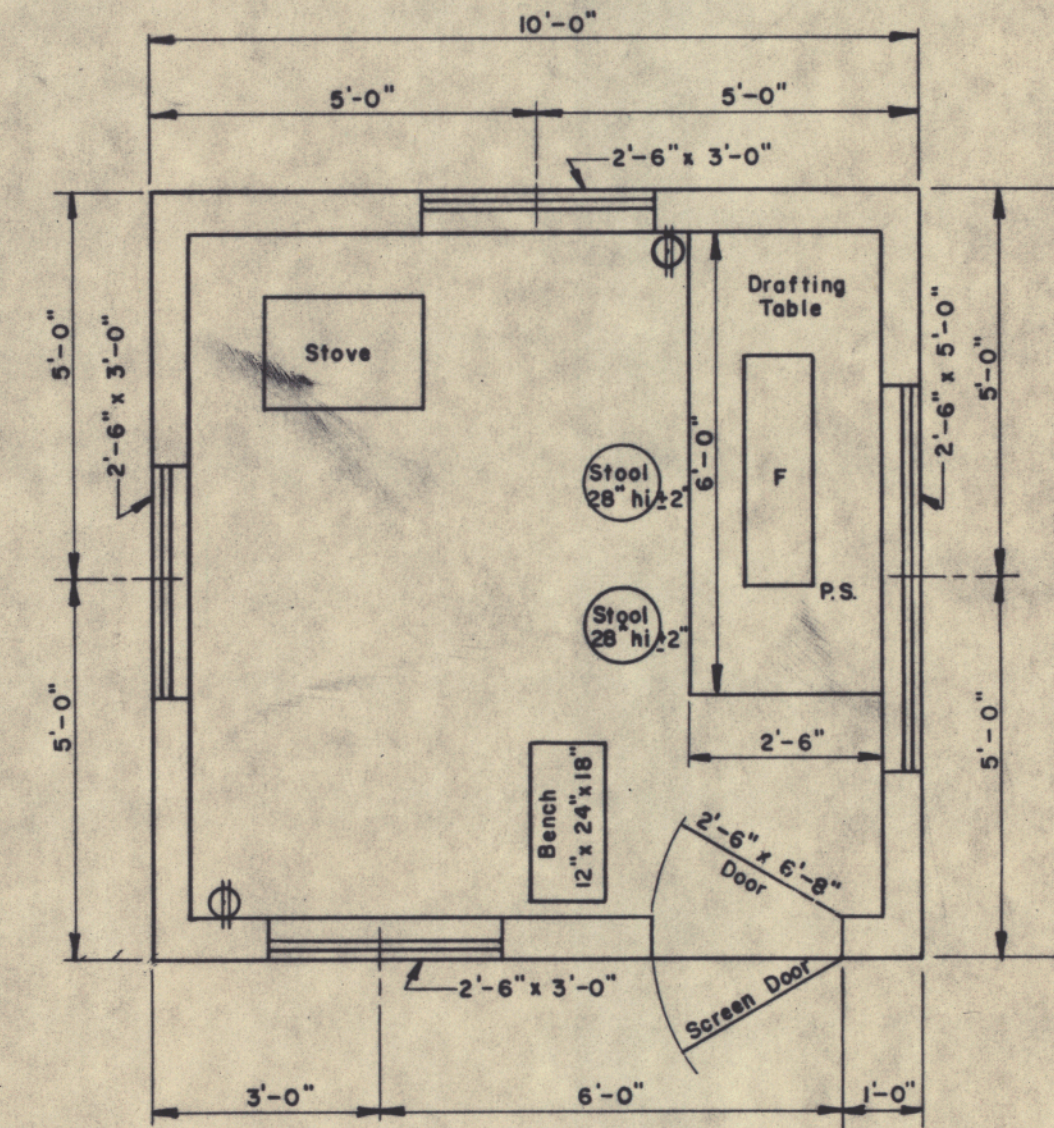


FLOOR PLAN
TYPE "A"

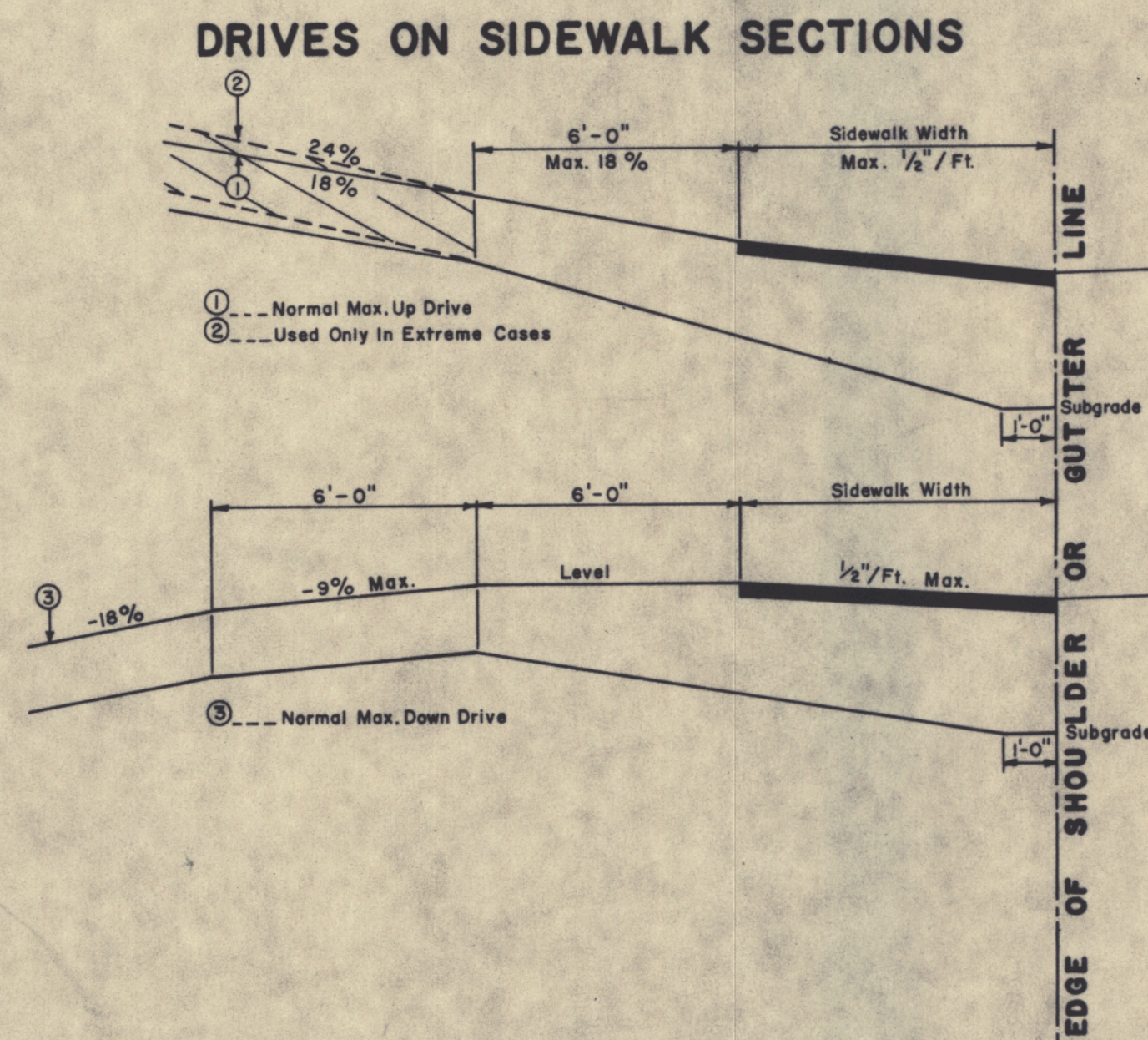


FLOOR PLAN
TYPE "B"



FLOOR PLAN
TYPE "C"

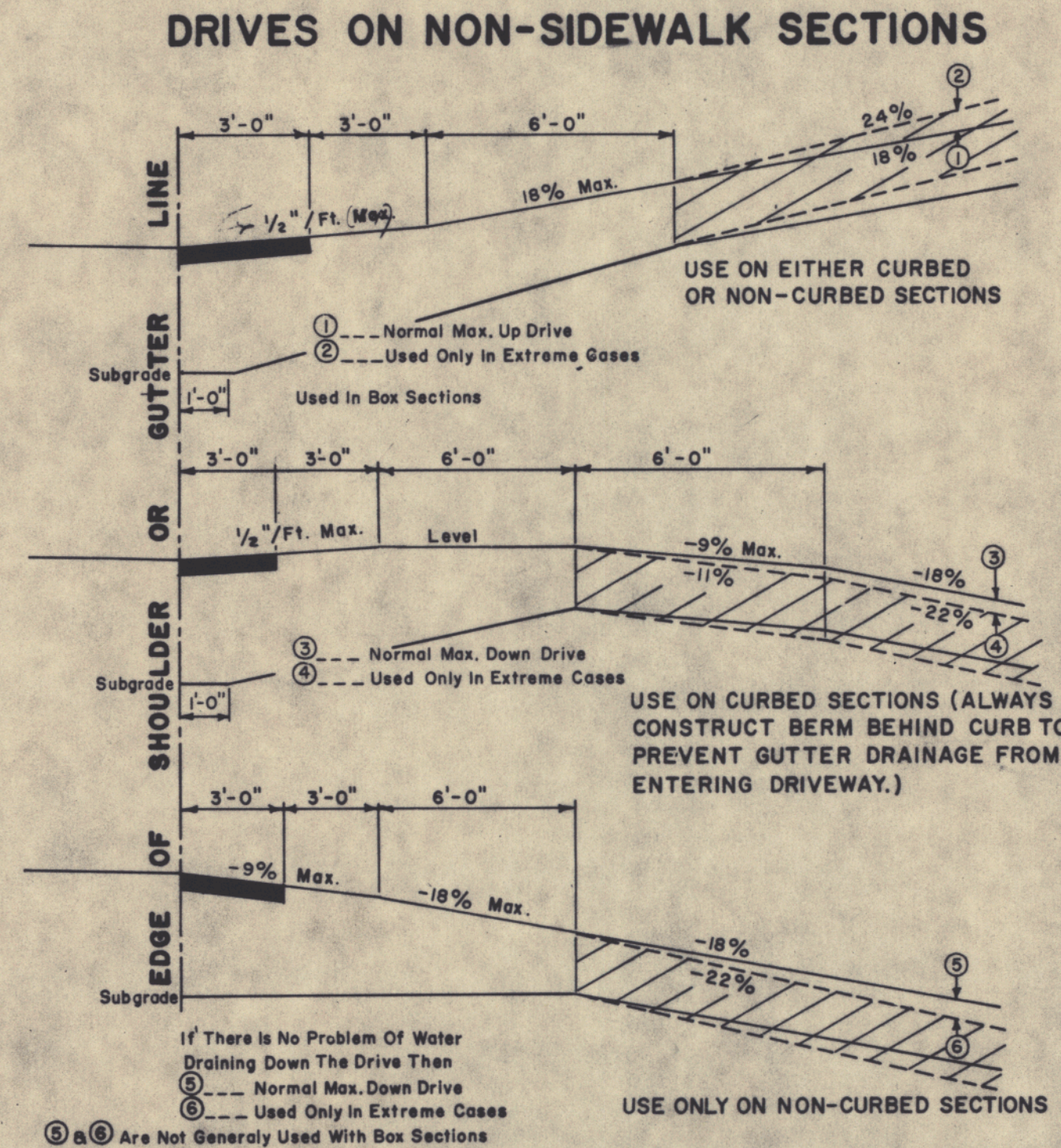
- GENERAL NOTES**
- Drafting table shall be 3'-4" high at front edge and placed 2" from studs to allow prints to hang down behind table when in use.
 - Shelves under desk shall be constructed to receive 1 1/2" x 14" x 25" transfiles.
 - Windows shall be double hung.
 - Stovepipe shall not be in direct contact with combustible material; the pipe shall be surrounded with at least 6" of fireproof material.
 - Continuous 110 volt 60 cycle electric service shall be supplied.
 - The engineer may rearrange the items shown on the plan views during construction of the field office.
 - FURNISHINGS TO BE SUPPLIED:
 - 2 Straight back chairs for types A and B
 - 1 Bench for types A, B & C
 - 3 Stool for type A
 - 2 Stools for types B & C
 - SYMBOLS:
 - F Florescent lights (2 light, rapid start 48" strips and 40 watt bulbs.)
 - P.S. Pull switch
 - ⊕ Duplex wall outlet—15 amp unless otherwise noted.
 - ⊕₃ Triplex Wall Outlet
 - For the Type "A" Field Office one clean 55 gal. drum shall be supplied, installed on a suitable rack and equipped with a spigot suitable for drawing off water. The drum shall be furnished with water at all times.



- GENERAL NOTES**
- The sidewalk width shall be paved in all cases.
 - All residential or commercial drives over 10% to be paved.

NOTES ON MAXIMUM DRIVEWAY PROFILES

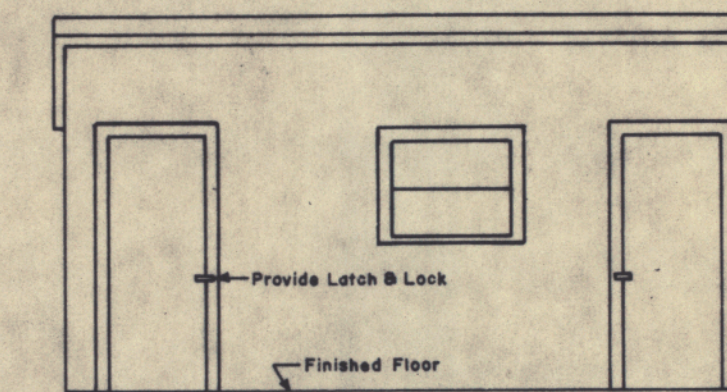
- These profiles are a guide for the majority of cases, but should be field checked when the main line grade is steep (4% to 6% or greater) or the angle of approach to the drive is unusual.
- Generally the majority of drives on a project will be built with flatter profiles than these maximum cases.
- When grading drives which are flatter than the maximum profiles the following rule of thumb should be used, do not exceed a grade % change of more than 9% in a 6 foot increment of driveway length. This applies to both up and down profiles.



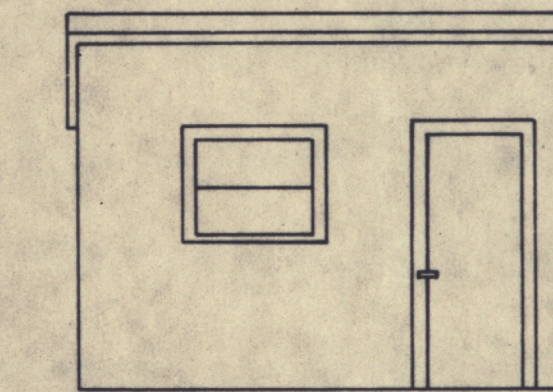
- GENERAL NOTES**
- The first 3' shown as pavement shall be paved only when abutting a paved area.
 - All residential or commercial drives over 10% to be paved.

NOTES ON MAXIMUM DRIVEWAY PROFILES

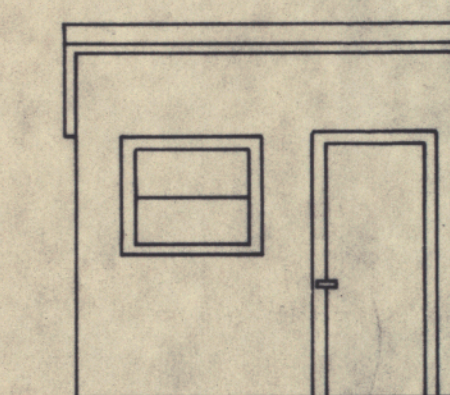
- These profiles are a guide for the majority of cases, but should be field checked when the main line grade is steep (4% to 6% or greater) or the angle of approach to the drive is unusual.
- Generally the majority of drives on a project will be built with flatter profiles than these maximum cases.
- When grading drives which are flatter than the maximum profiles the following rule of thumb should be used, do not exceed a grade % change of more than 9% in a 6 foot increment of driveway length. This applies to both up and down profiles.



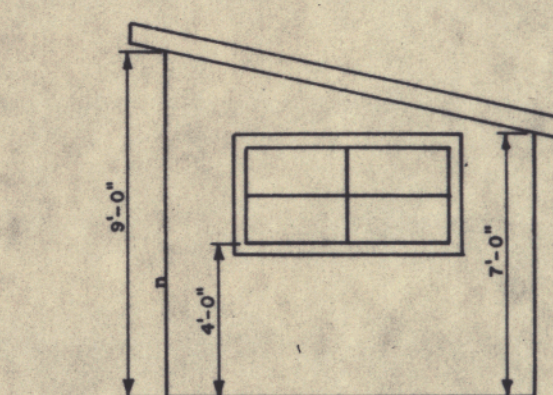
FRONT ELEVATION
TYPE "A"



FRONT ELEVATION
TYPE "B"



FRONT ELEVATION
TYPE "C"



SIDE ELEVATION
TYPES "A" "B" & "C"

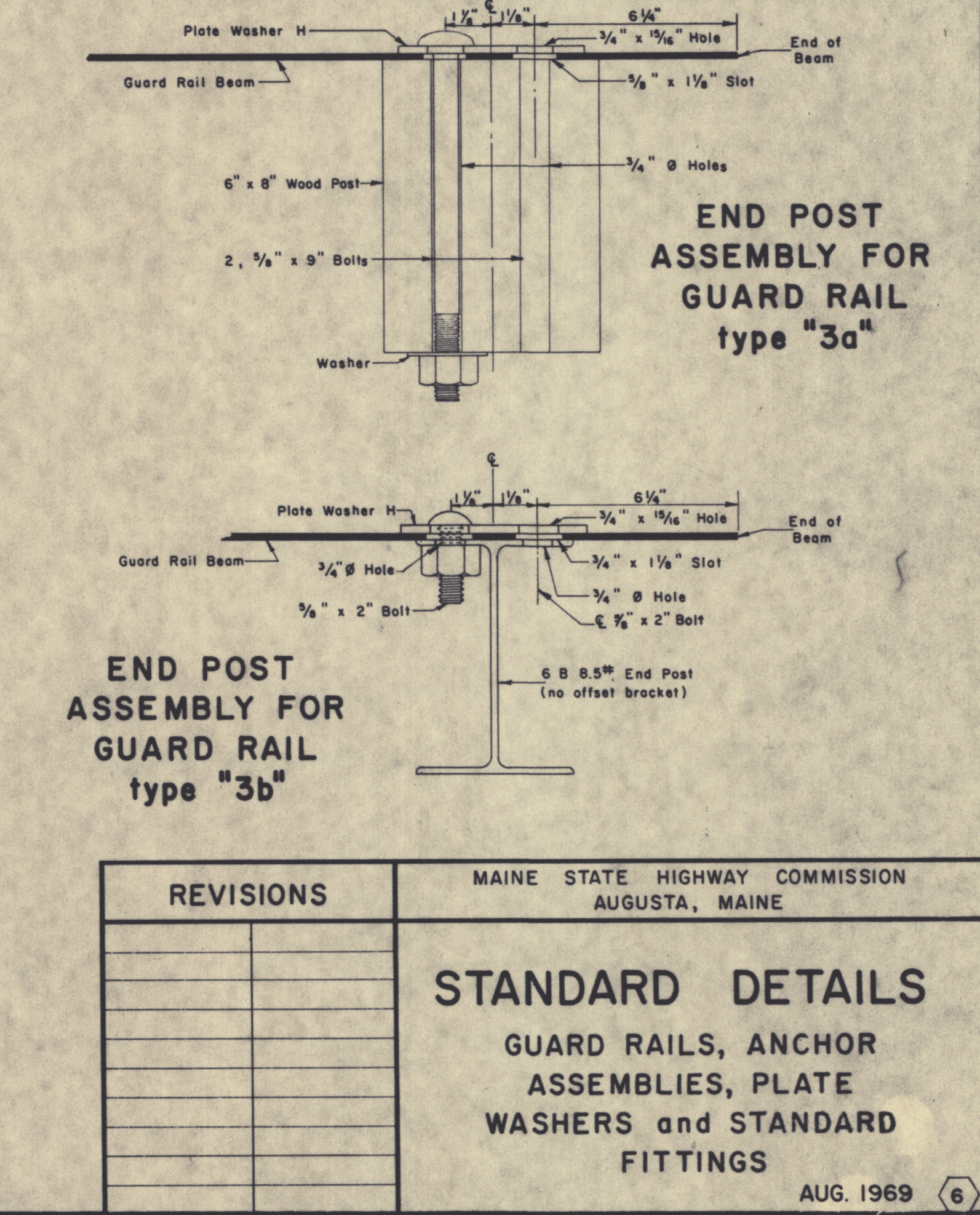
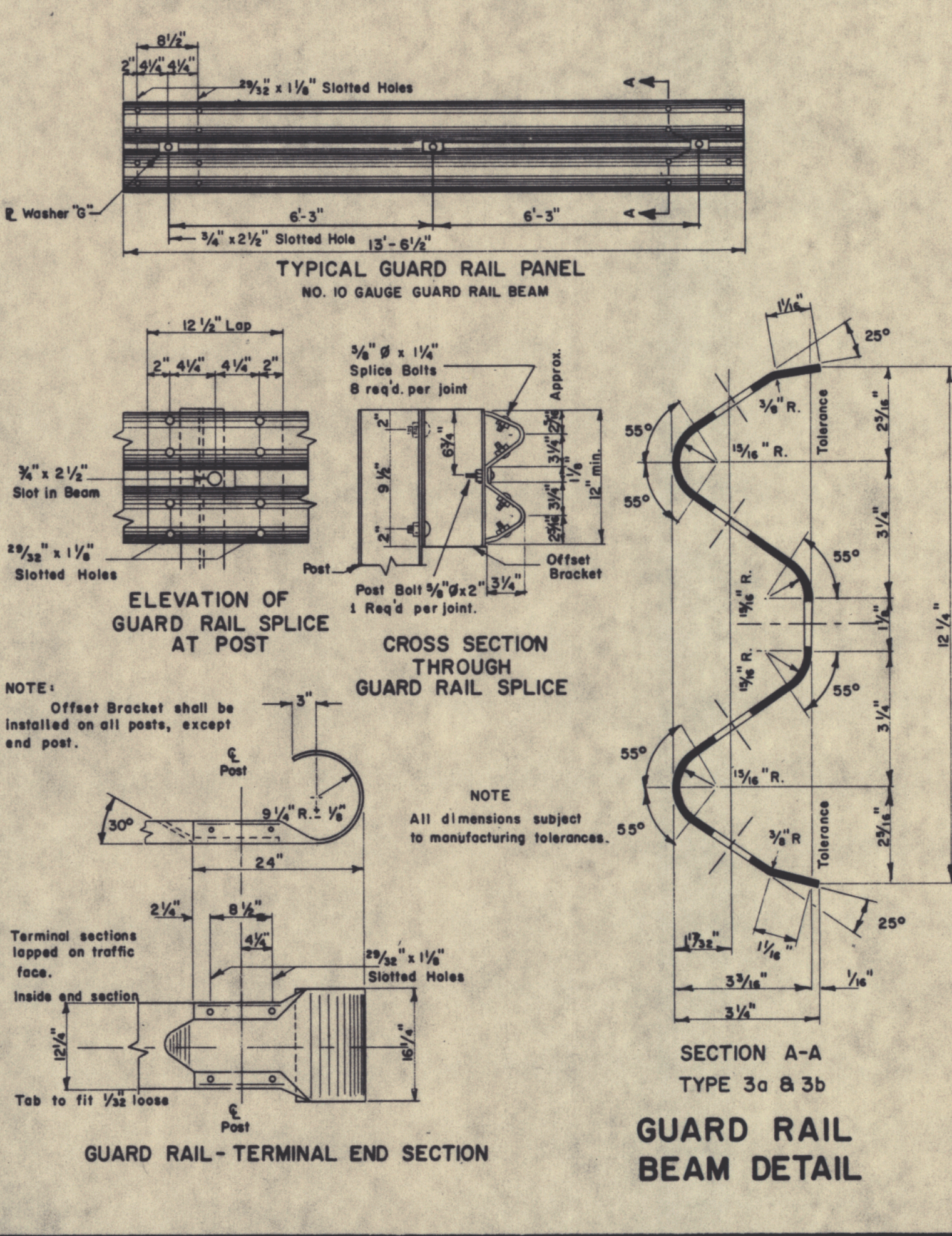
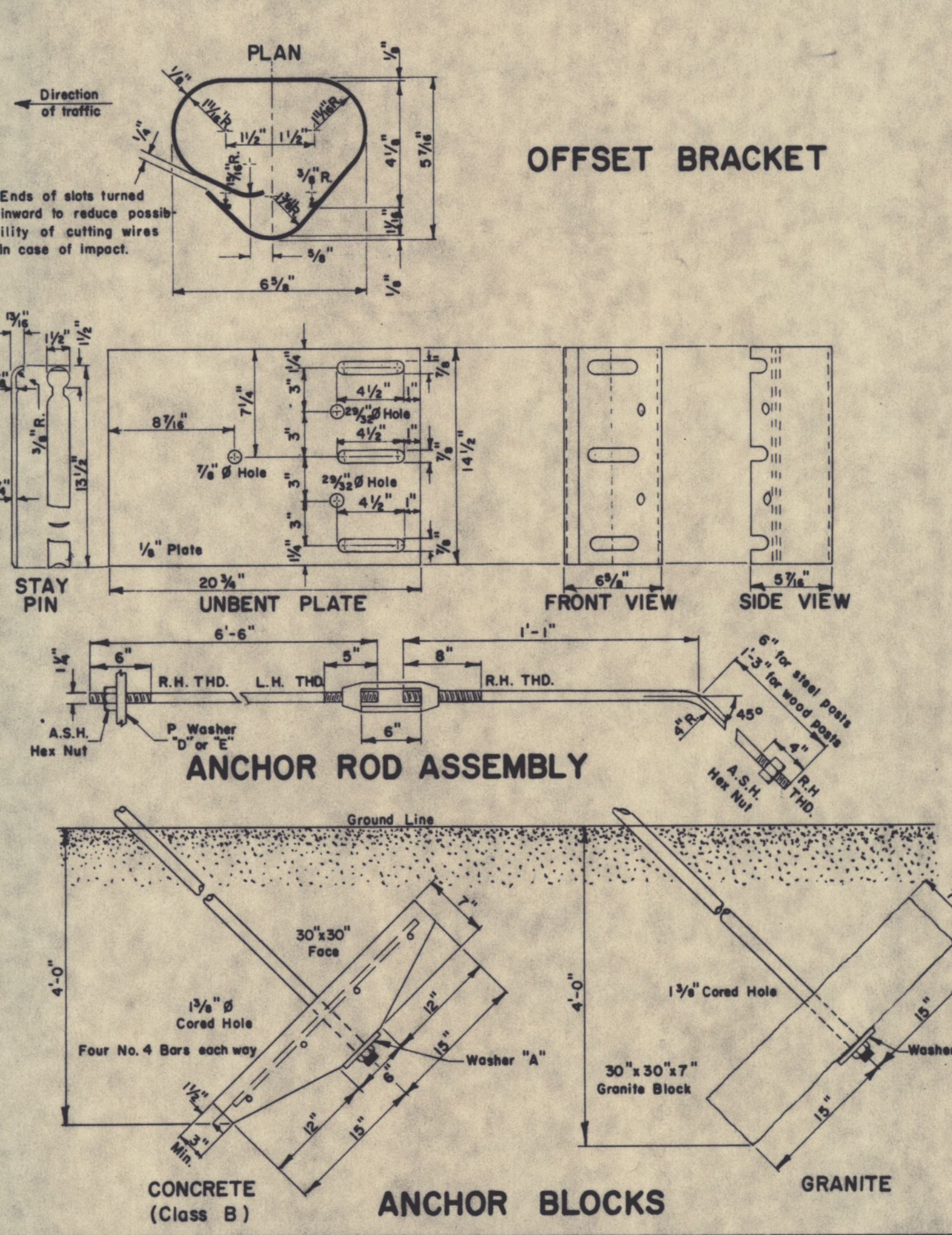
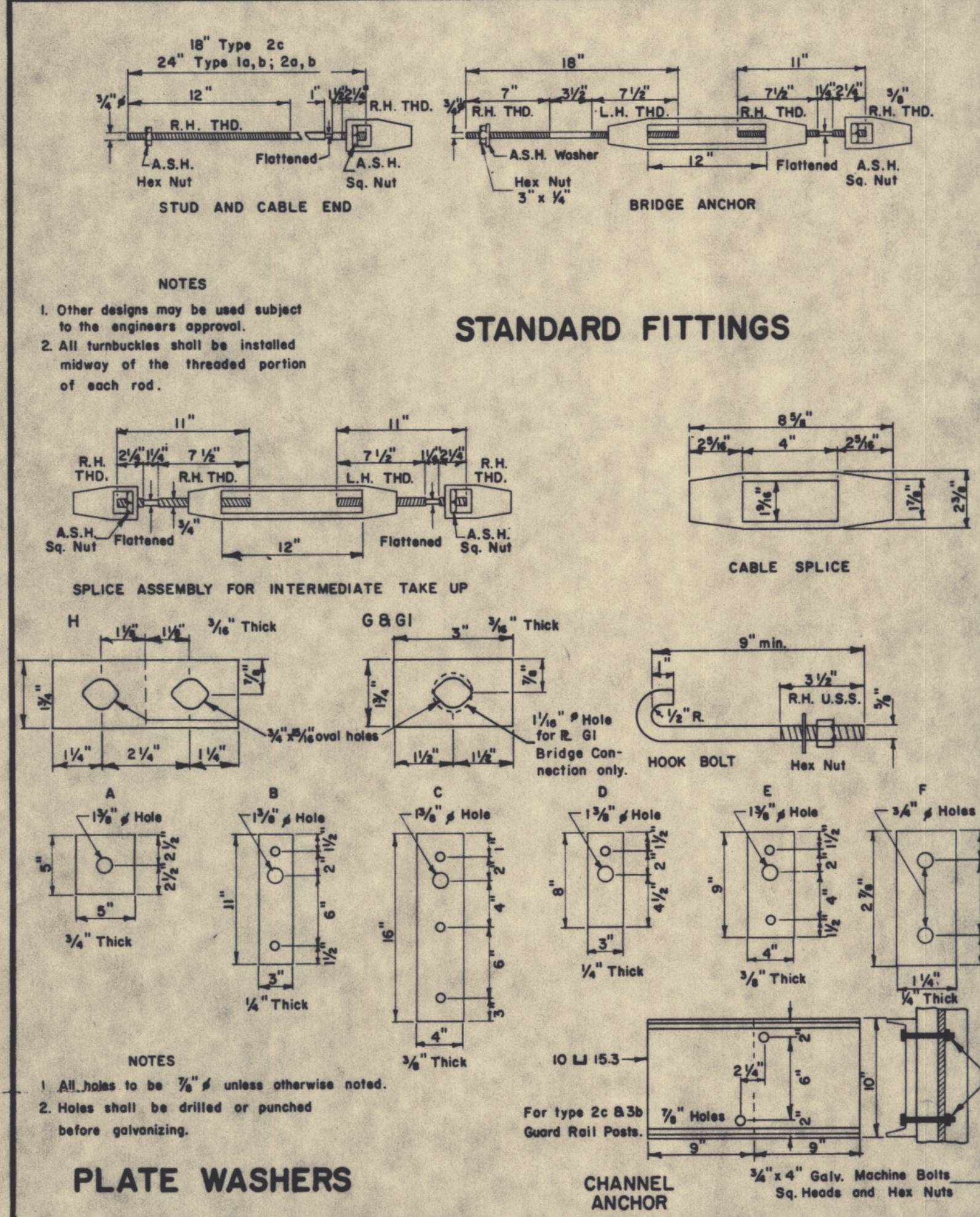
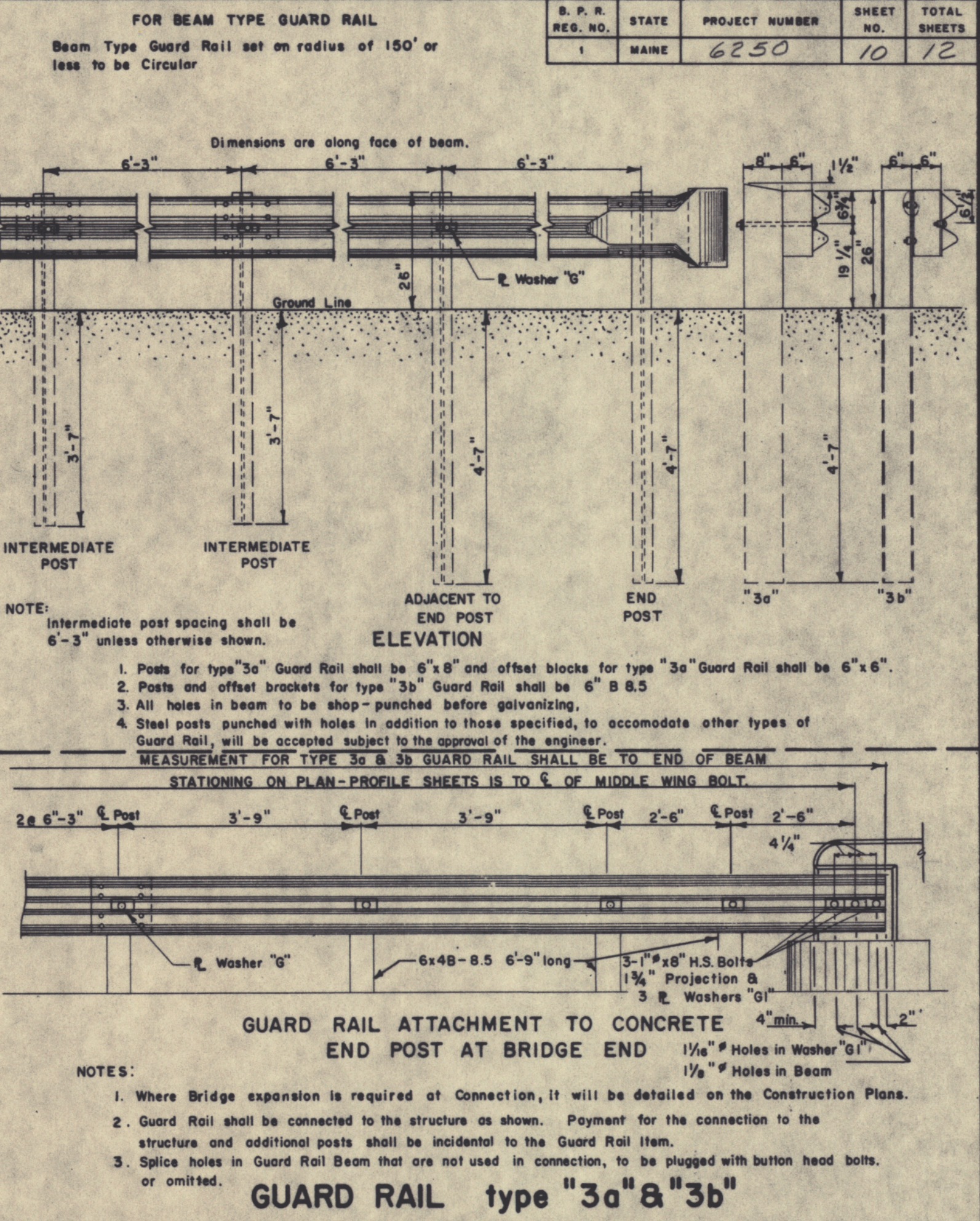
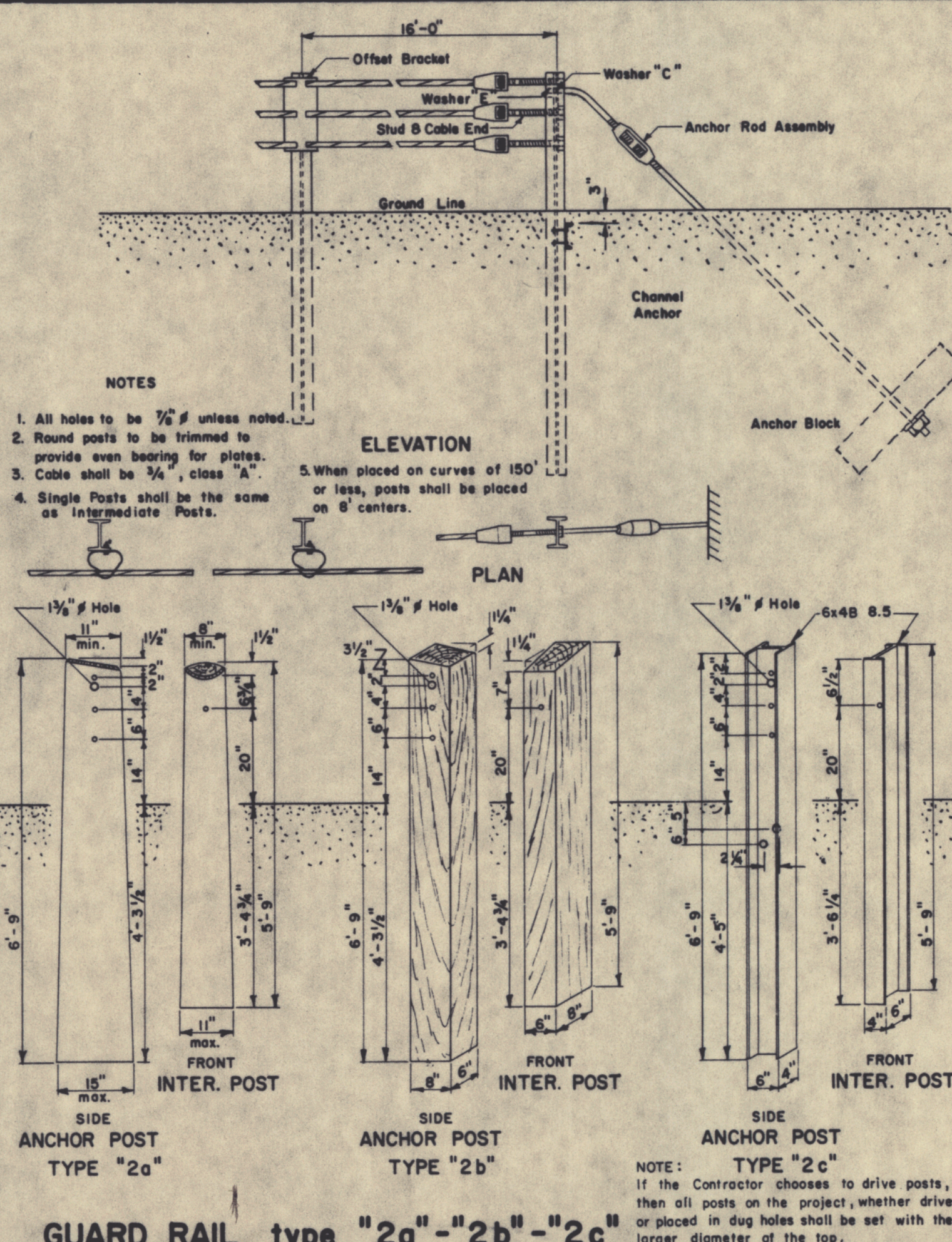
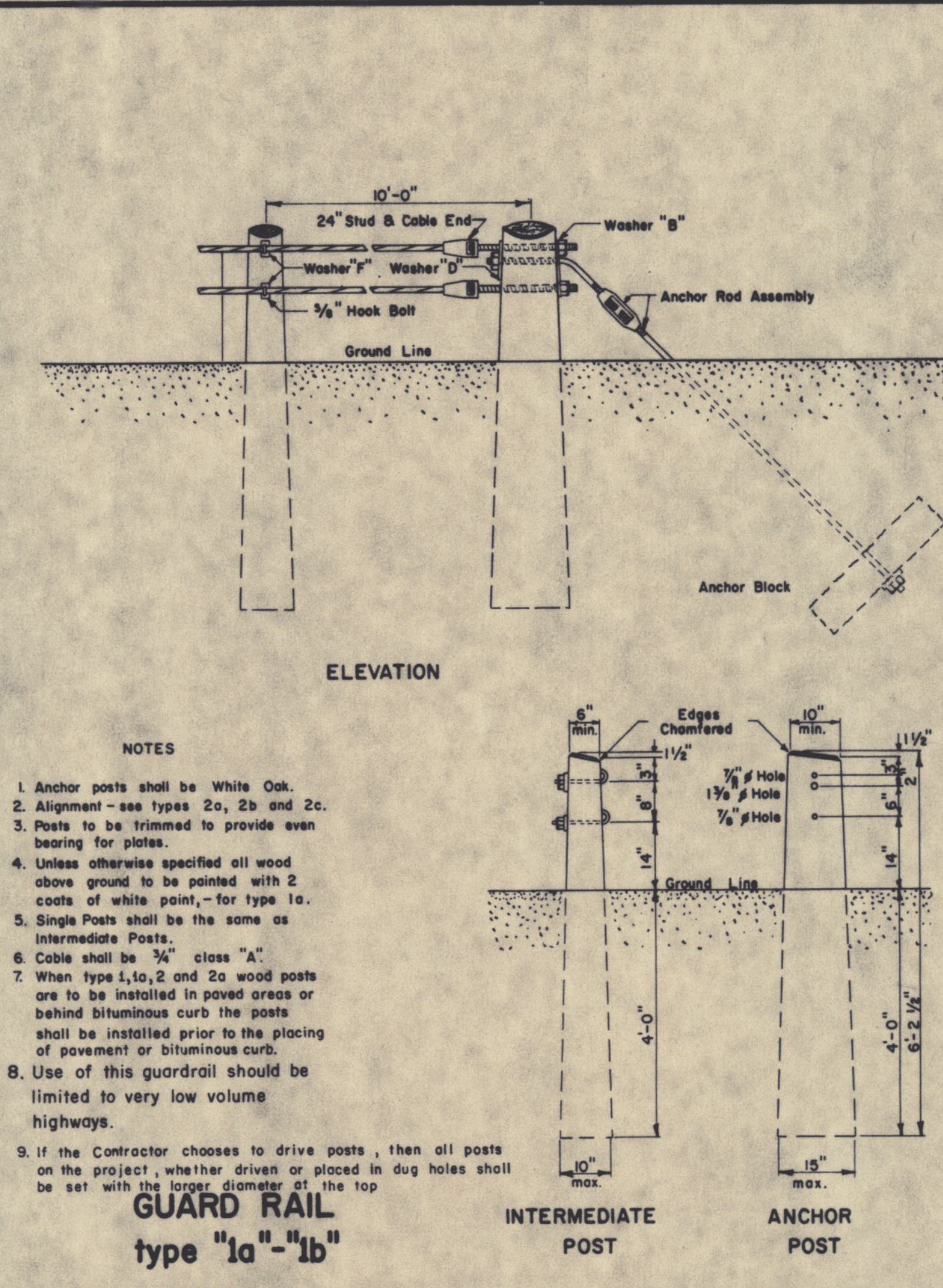
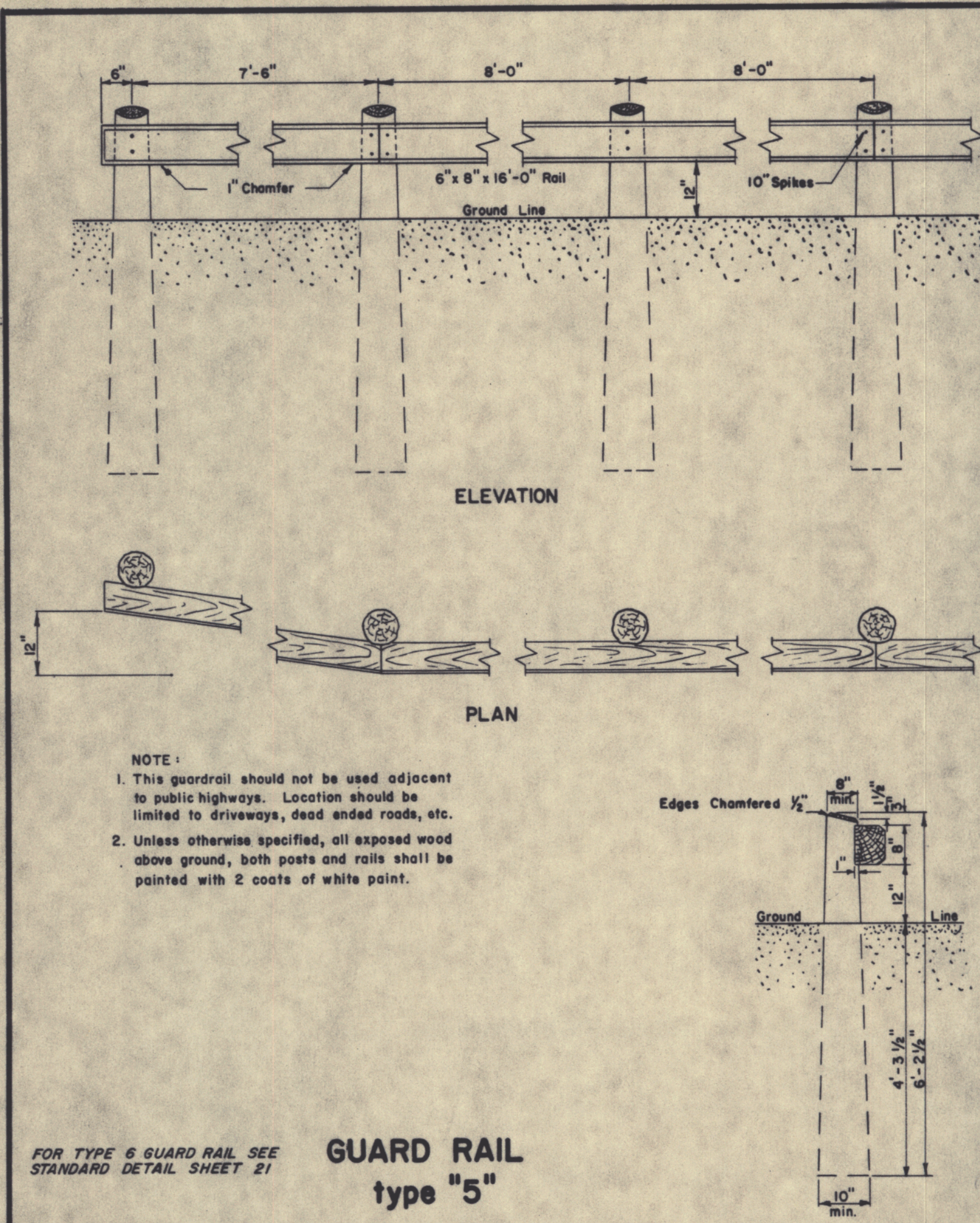
REVISIONS

MAINE STATE HIGHWAY COMMISSION
AUGUSTA, MAINE

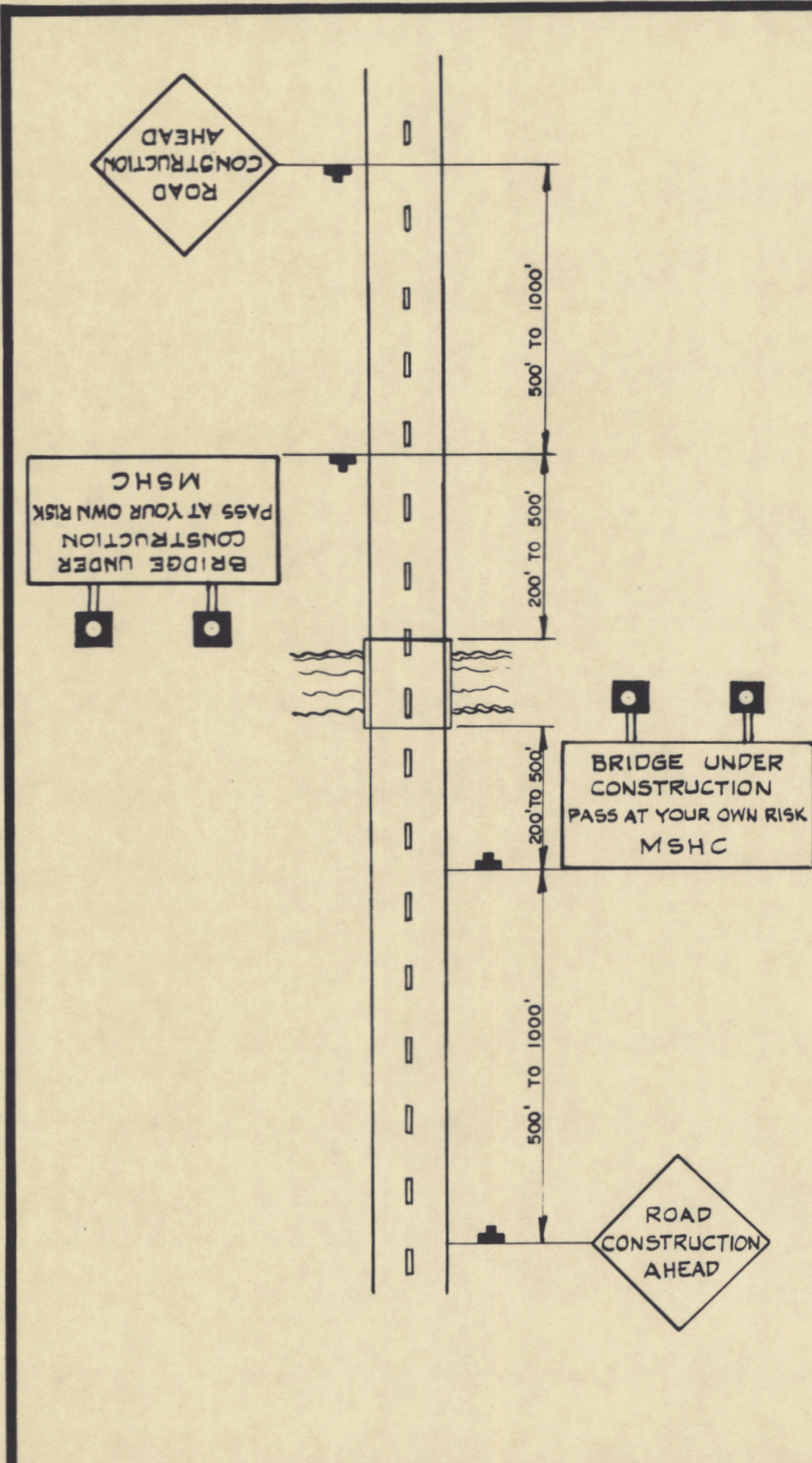
STANDARD DETAILS

DRIVEWAY DETAILS
FIELD OFFICES
TESTING LABORATORY

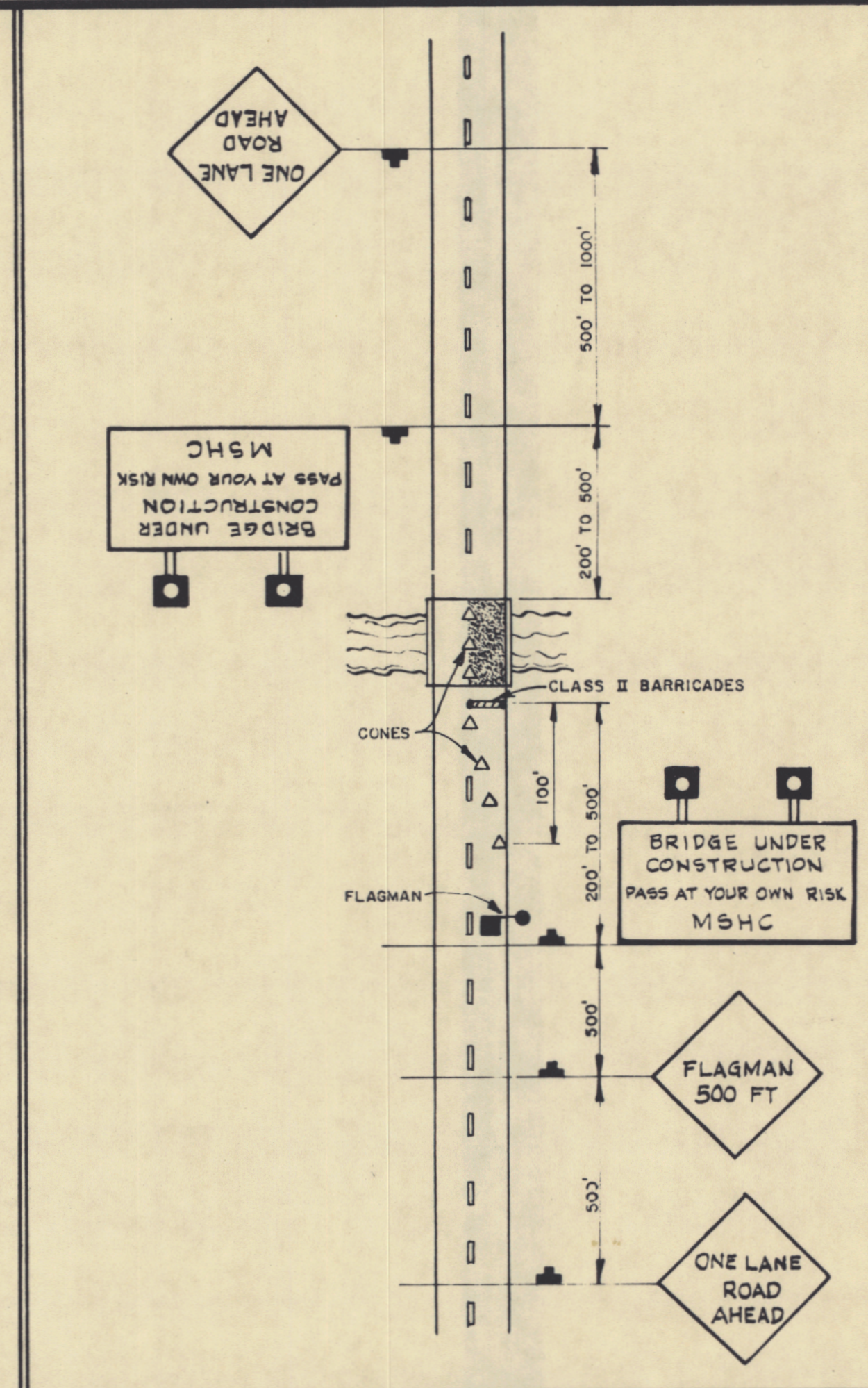
AUG. 1969



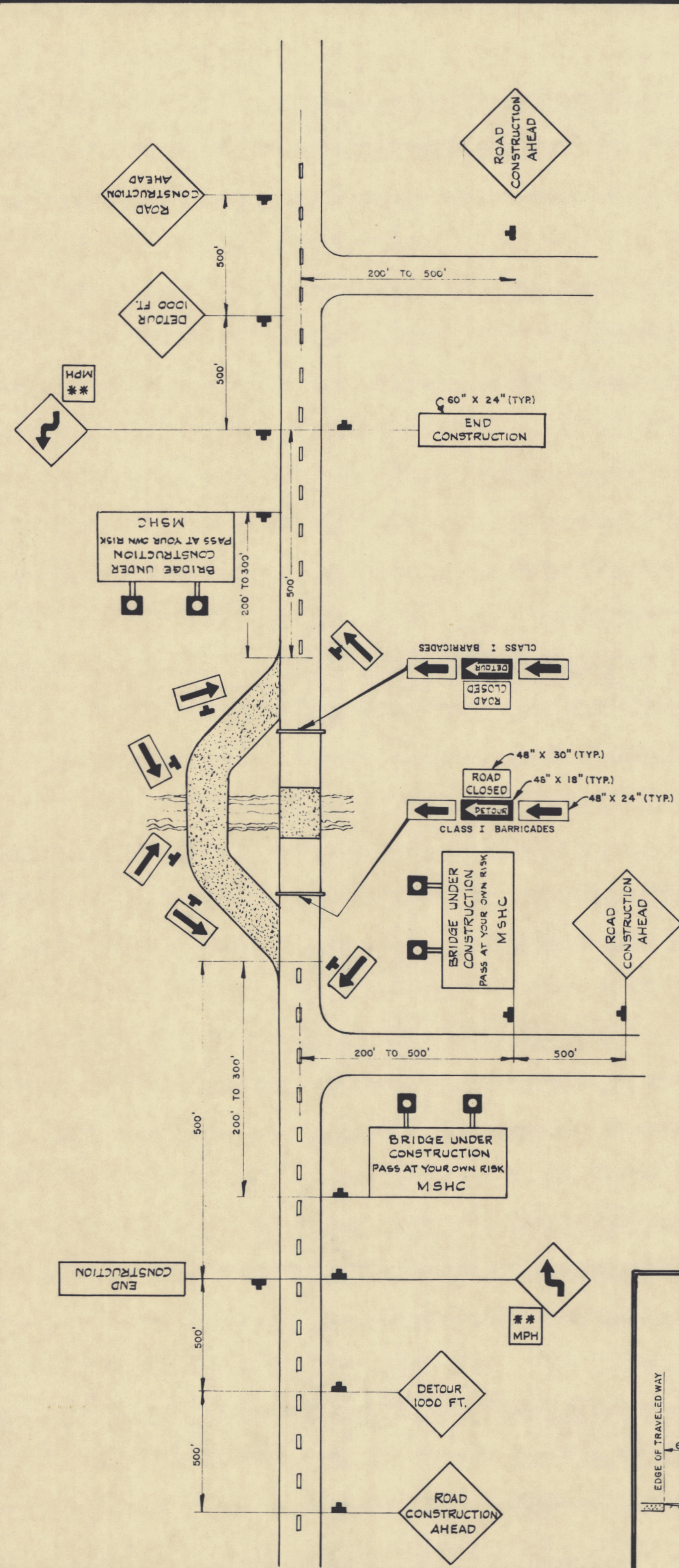
REVISIONS		MAINE STATE HIGHWAY COMMISSION AUGUSTA, MAINE			
		STANDARD DETAILS GUARD RAILS, ANCHOR ASSEMBLIES, PLATE WASHERS and STANDARD FITTINGS			
		AUG. 1969			



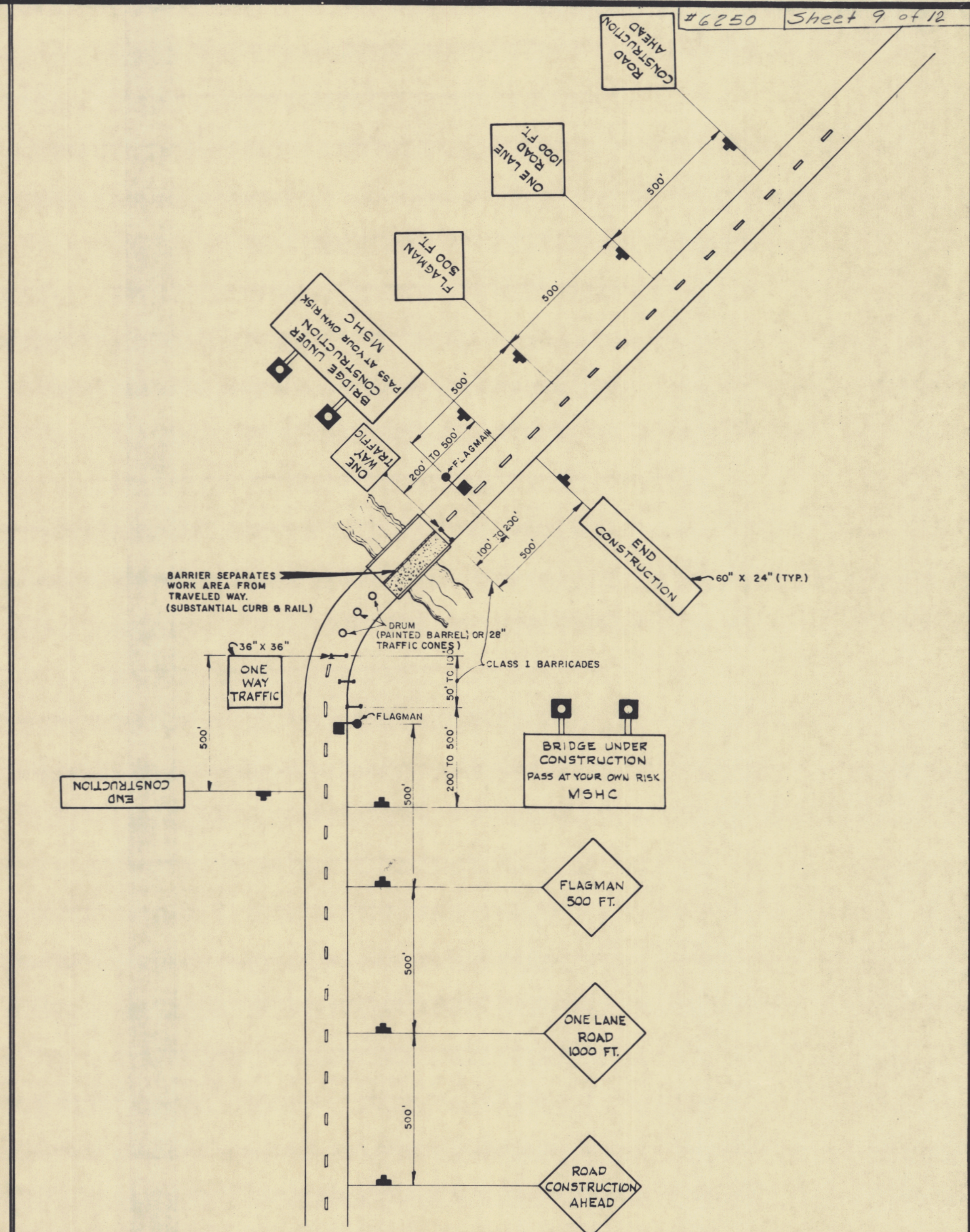
WHEN DETOURS OR LANE CLOSURES ARE NOT REQUIRED.



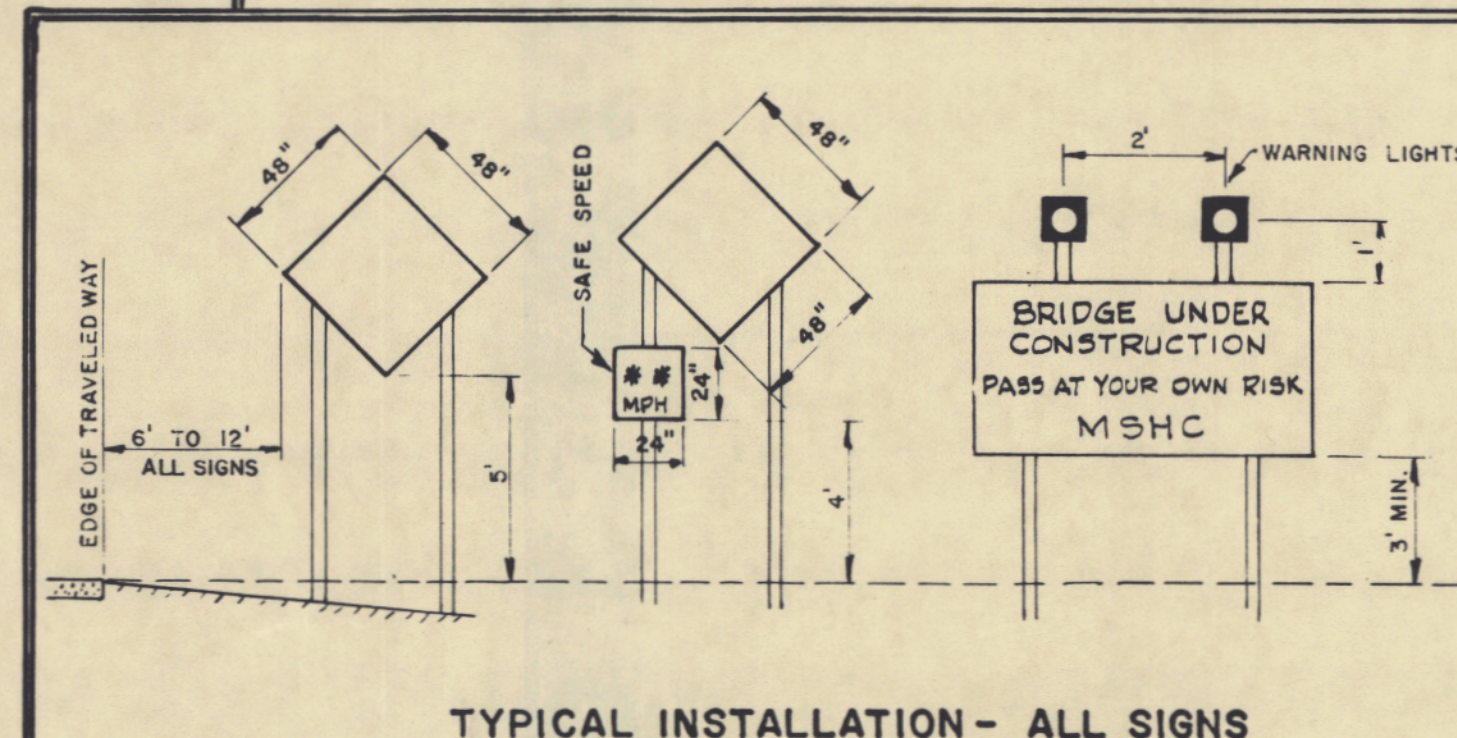
MINOR OPERATIONS OF SHORT DURATION REQUIRING LANE CLOSURE



FOR ALL TRAFFIC CONDITIONS WHEN DETOURS ARE REQUIRED



MAJOR OPERATIONS OF LONG DURATION REQUIRING LANE CLOSURE



TYPICAL INSTALLATION - ALL SIGNS

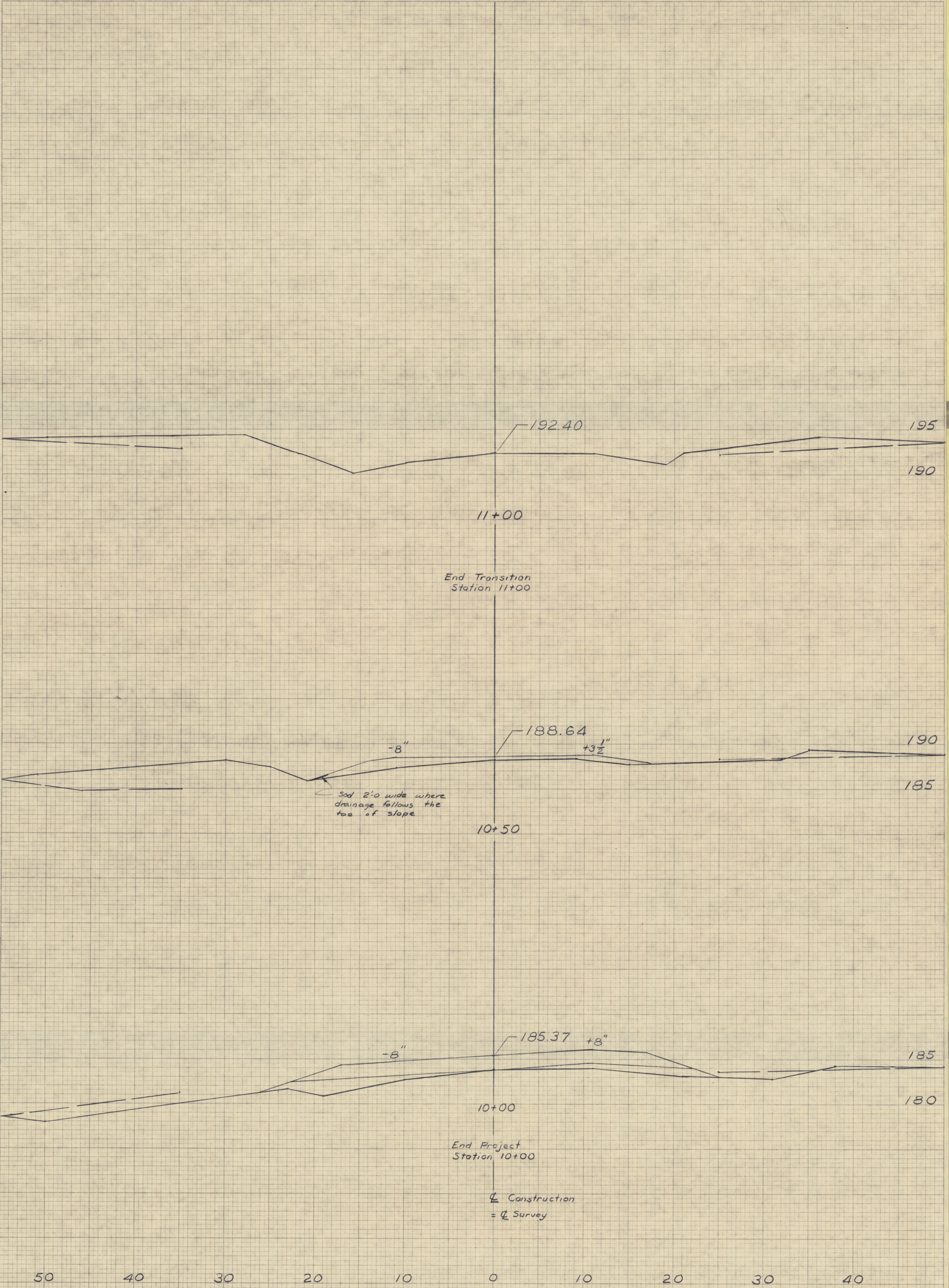
MAINE STATE HIGHWAY COMMISSION
AUGUSTA, MAINE

STANDARD DETAILS
(BD 111 - 69)

TRAFFIC CONTROL DEVICES
FOR BRIDGE PROJECTS ON 2-LANE HIGHWAYS

ORIGINAL SURVEY	SURVEYED	BY	DATE
NOTE BOOK NO.	PLOTTED		
	TEMPLATE	DEW	27 Jul 71
	AREAS		
	AREAS CHECKED	EBL	8-71

FINAL SURVEY	SURVEYED	BY	DATE
NOTE BOOK NO.	PLOTTED		
	TEMPLATE	DEW	7-71
	AREAS		
	AREAS CHECKED		

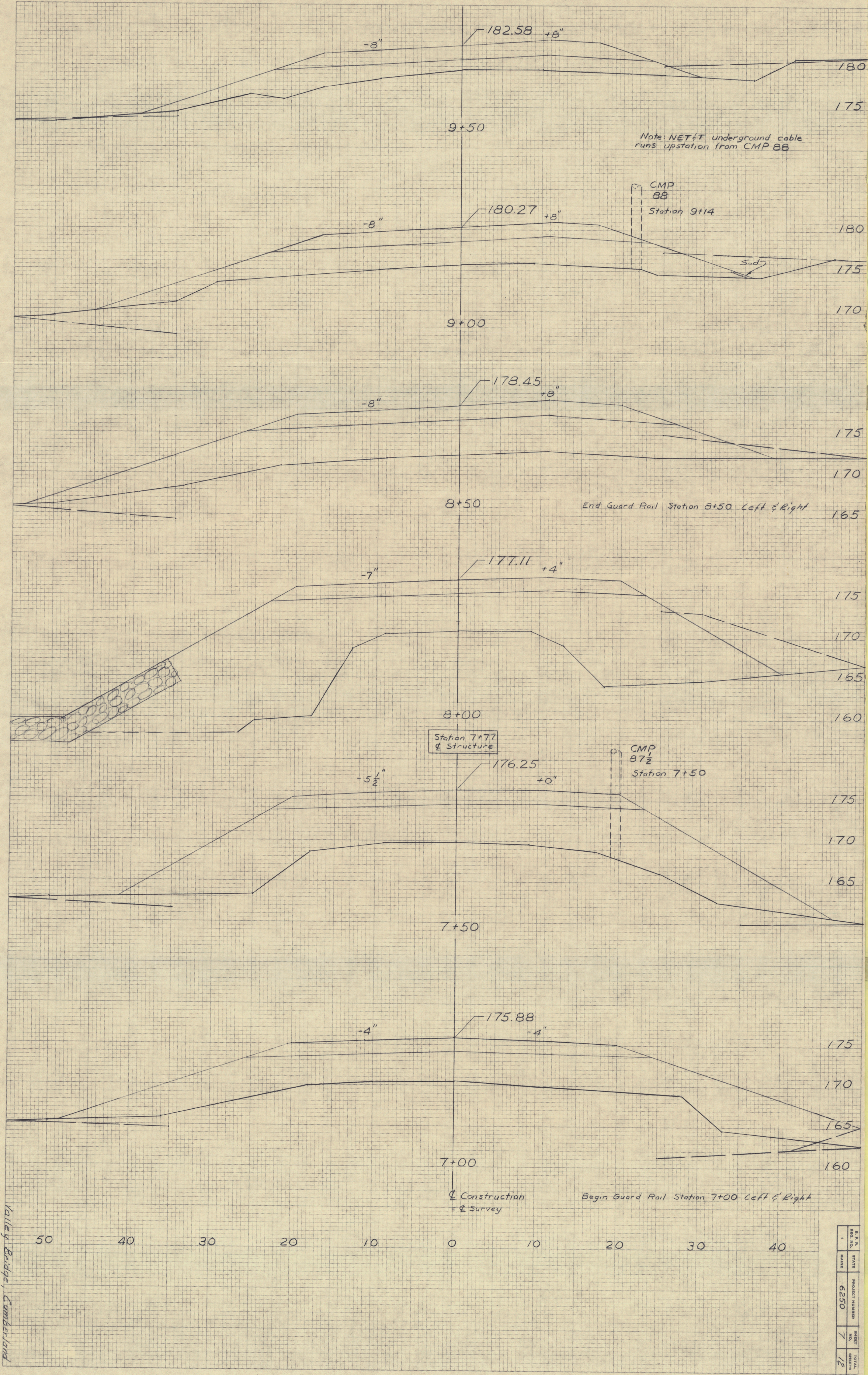


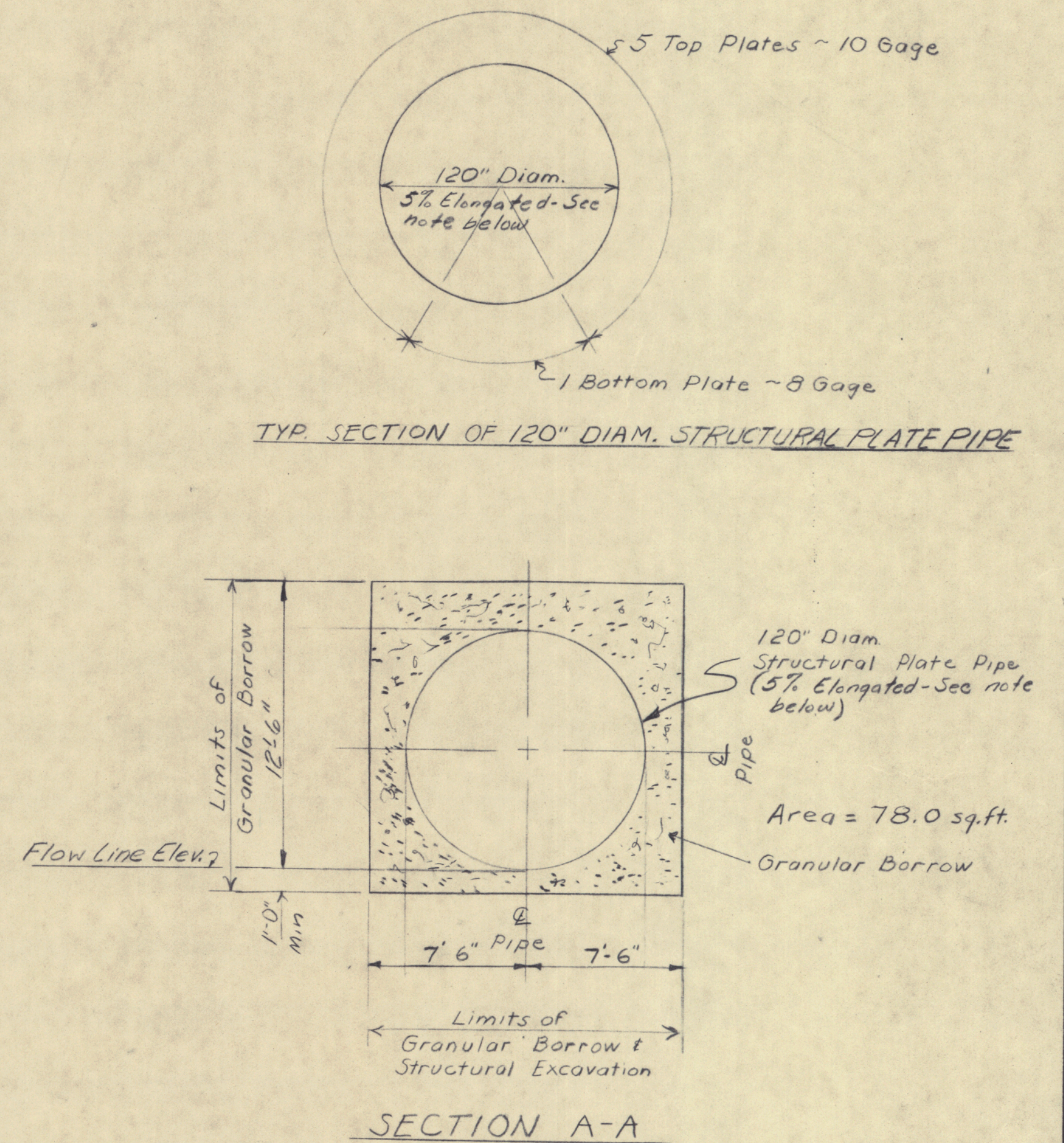
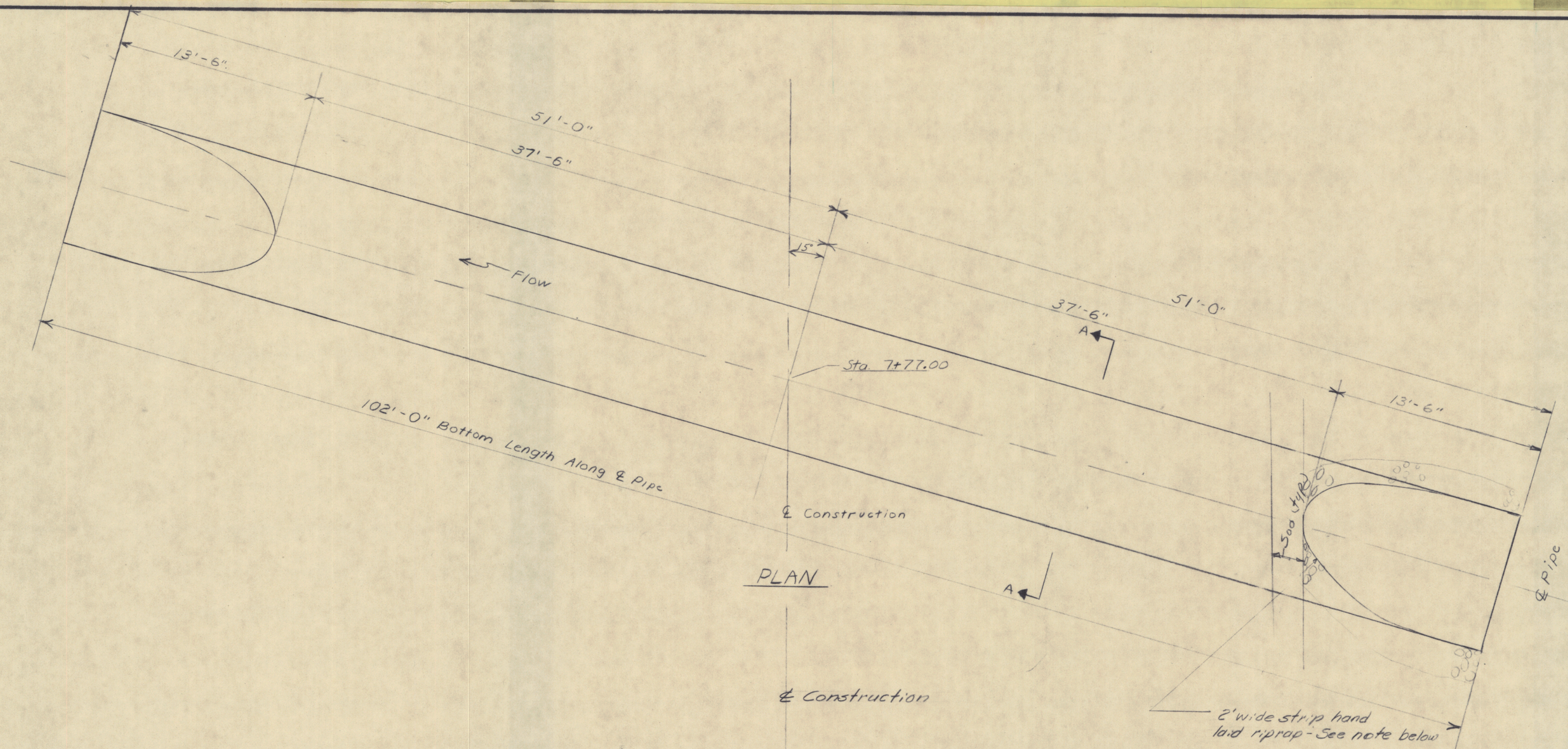
Valley Bridge, Cumberland

B. R. R.	STATE	PROJECT NUMBER	SHEET NO.	TOTAL SHEETS
1	MAINE	6250	8	12

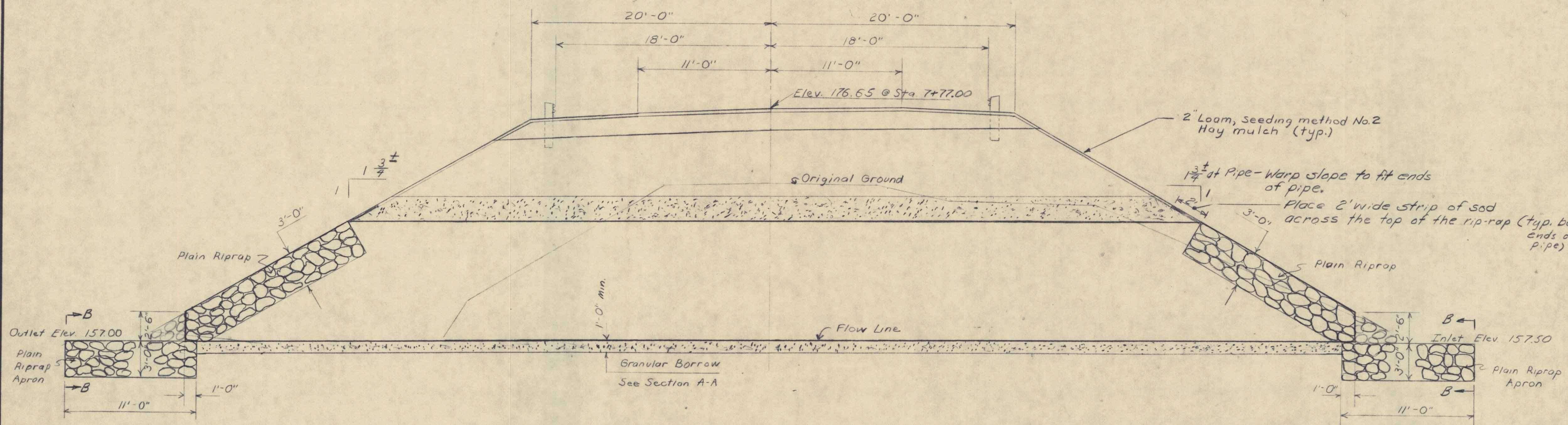
ORIGINAL SURVEY	SURVEYED	BY	DATE
NOTE BOOK	PLOTTED	DEW	27 Jul 71
NO.	TEMPLATE		
	AREAS CHECKED	EBC	8-71

FINAL SURVEY	SURVEYED	BY	DATE
NOTE BOOK	PLOTTED		
NO.	TEMPLATE		
	AREAS CHECKED		

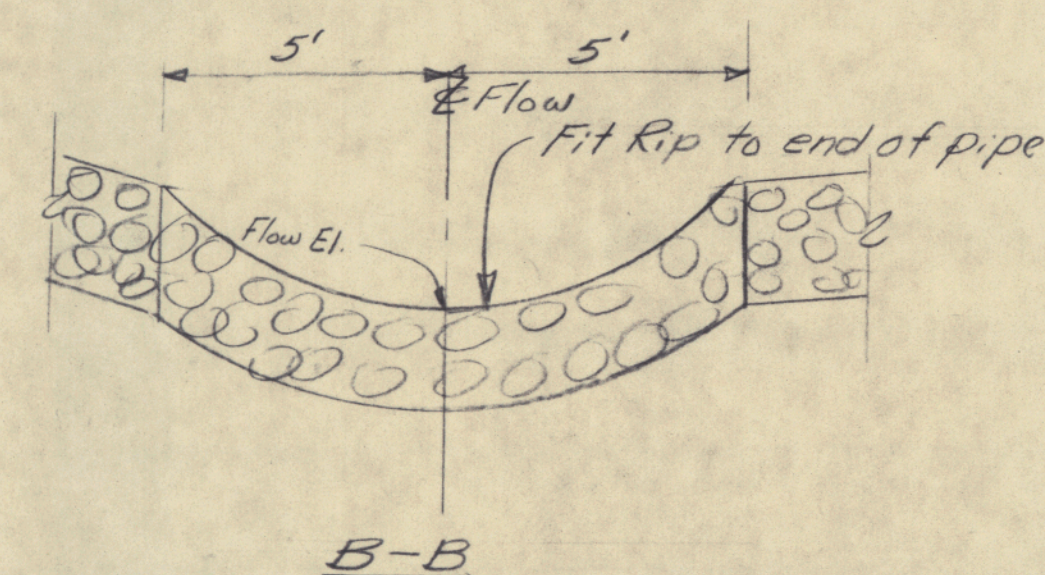




- NOTES:
1. One 120" Diameter Structural Plate Pipe Eq. Top Plates 10 Gage, Bottom Plate 8 Gage, Assembly With 3/4" Hot Dipped Galvanized Bolts (ASTM A325).
 2. The Vertical Axis of the Pipe Shall Be 5% Elongated.
 3. Granular Borrow Shall Meet the Requirements of Sub-Sect. 703.19, Granular Borrow Material for Underwater Backfill.



NOTE: Riprap shall be hand laid 2' wide around ends of pipe. Payment for this hand laying shall be included in the unit bid price for Item 610.03 "Plain Riprap."



STATE HIGHWAY COMMISSION

VALLEY BRIDGE

OVER

PRINCE STREAM

IN THE TOWN OF

CUMBERLAND

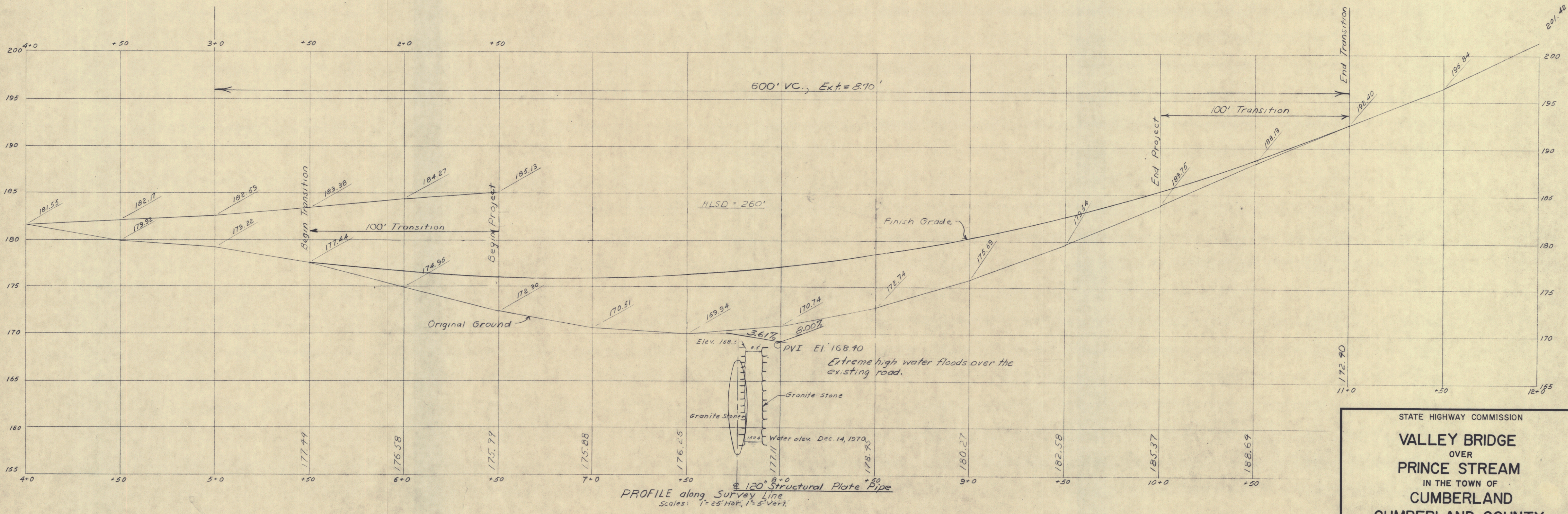
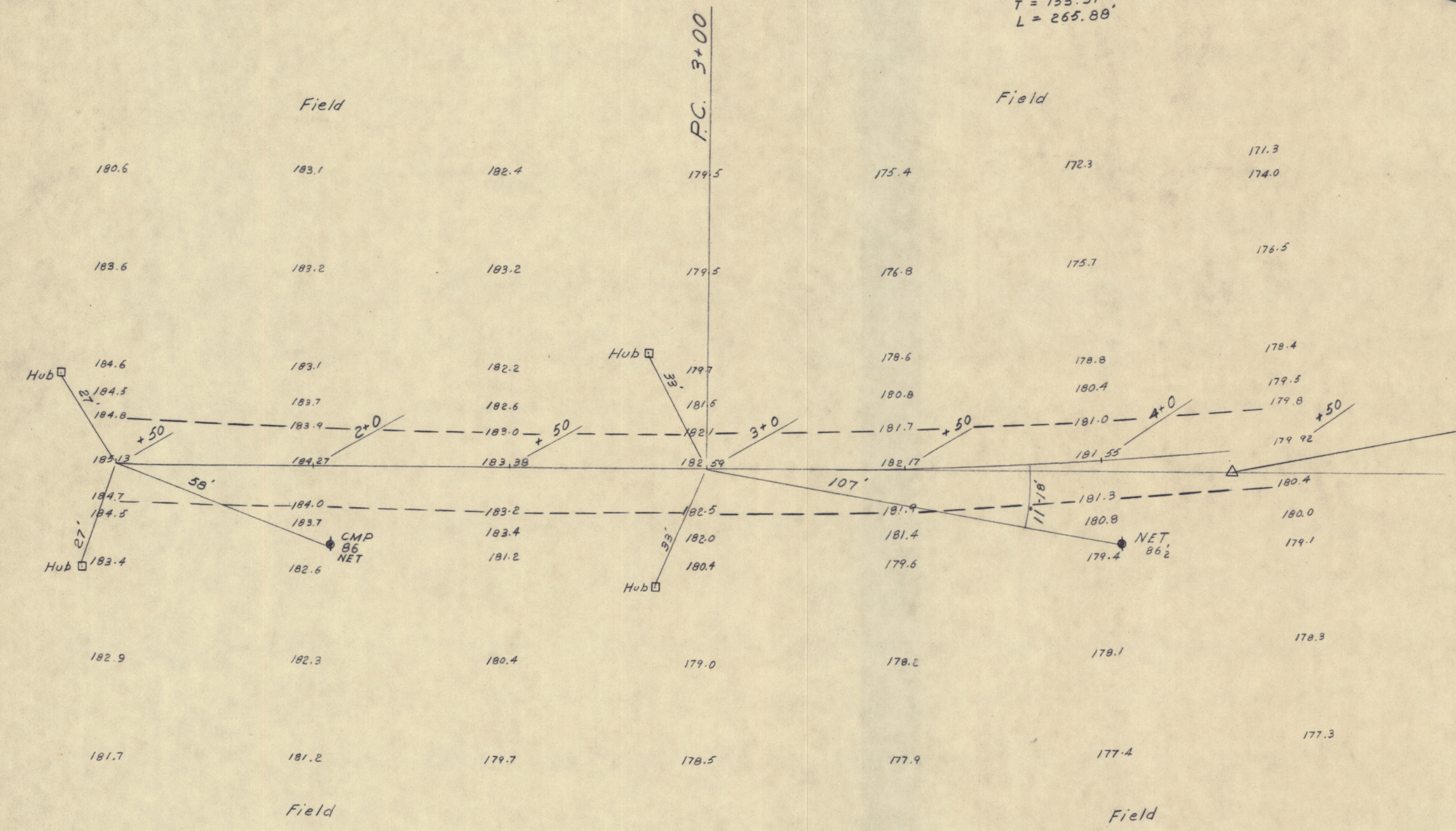
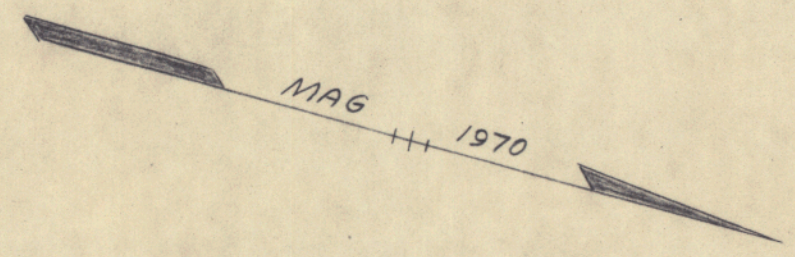
CUMBERLAND COUNTY

STRUCTURAL PLATE PIPE

SHEET 5 OF 12 AUGUSTA, MAINE JAN 1971

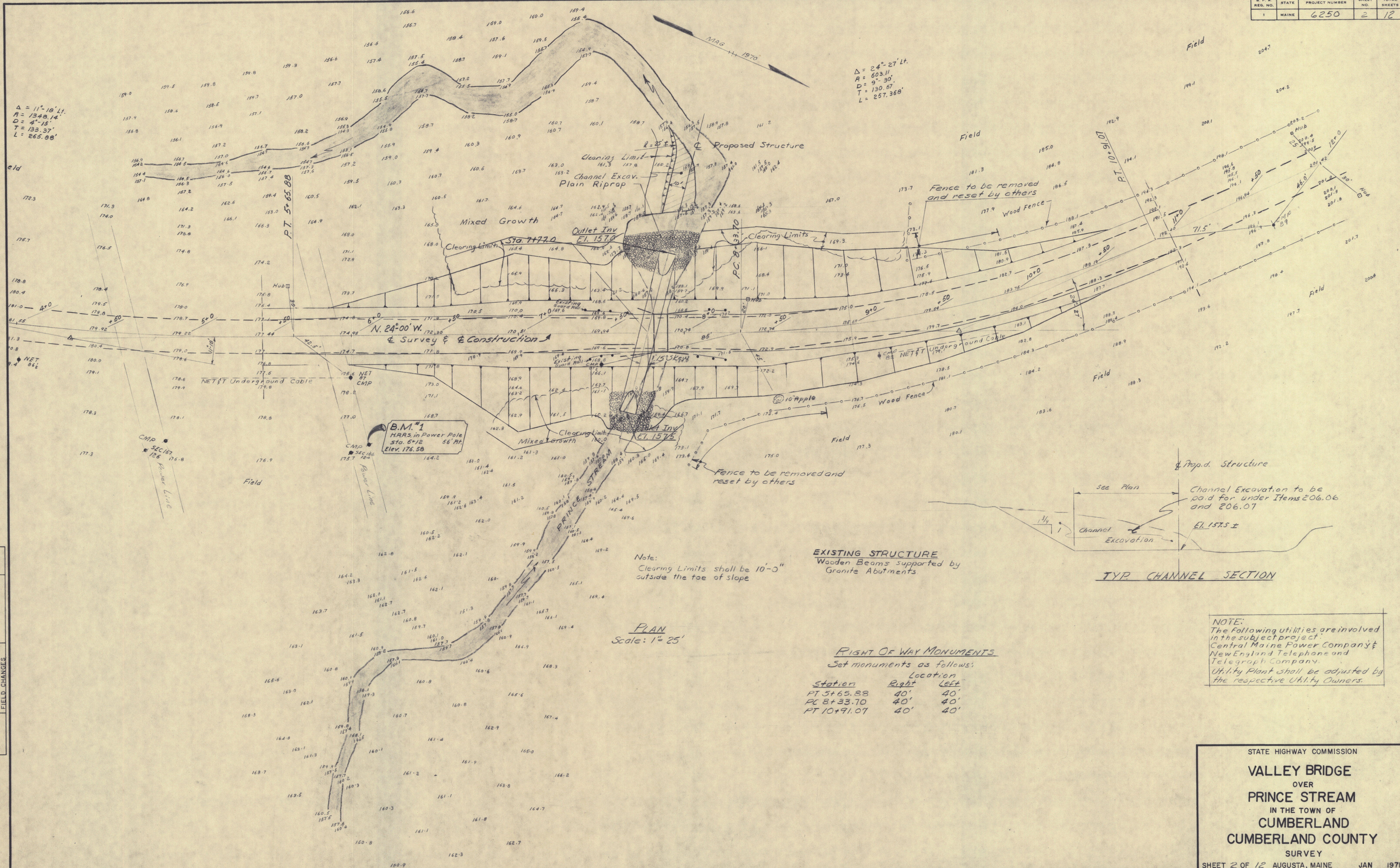
PLANS	DATE	BY	DESIGN - DETAIL	CHECKED	REVISIONS	FIELD CHANGES
	7-71	EC	EC	EC		
	8-71	EC				

$\Delta = 11^{\circ}-18' Lt.$
 $R = 1348.14'$
 $D = 4^{\circ}-15'$
 $T = 133.37'$
 $L = 265.88'$



Plat.	C.F.H.	Feb. 1971
By	W.K.	W.K.
DESIGN - DETAILED		
CHECKED		
REVISIONS		
FIELD CHANGES		

STATE HIGHWAY COMMISSION
VALLEY BRIDGE
 OVER
PRINCE STREAM
 IN THE TOWN OF
CUMBERLAND
CUMBERLAND COUNTY
 SURVEY
 SHEET 3 OF 12 AUGUSTA, MAINE JAN 1971



RIGHT OF WAY MONUMENTS
Set monuments as follows:

<u>Station</u>	<u>Right</u>	<u>Location</u> <u>Left</u>
PT 5+65.88	40'	40'
PC 8+33.70	40'	40'
PT 10+91.07	40'	40'

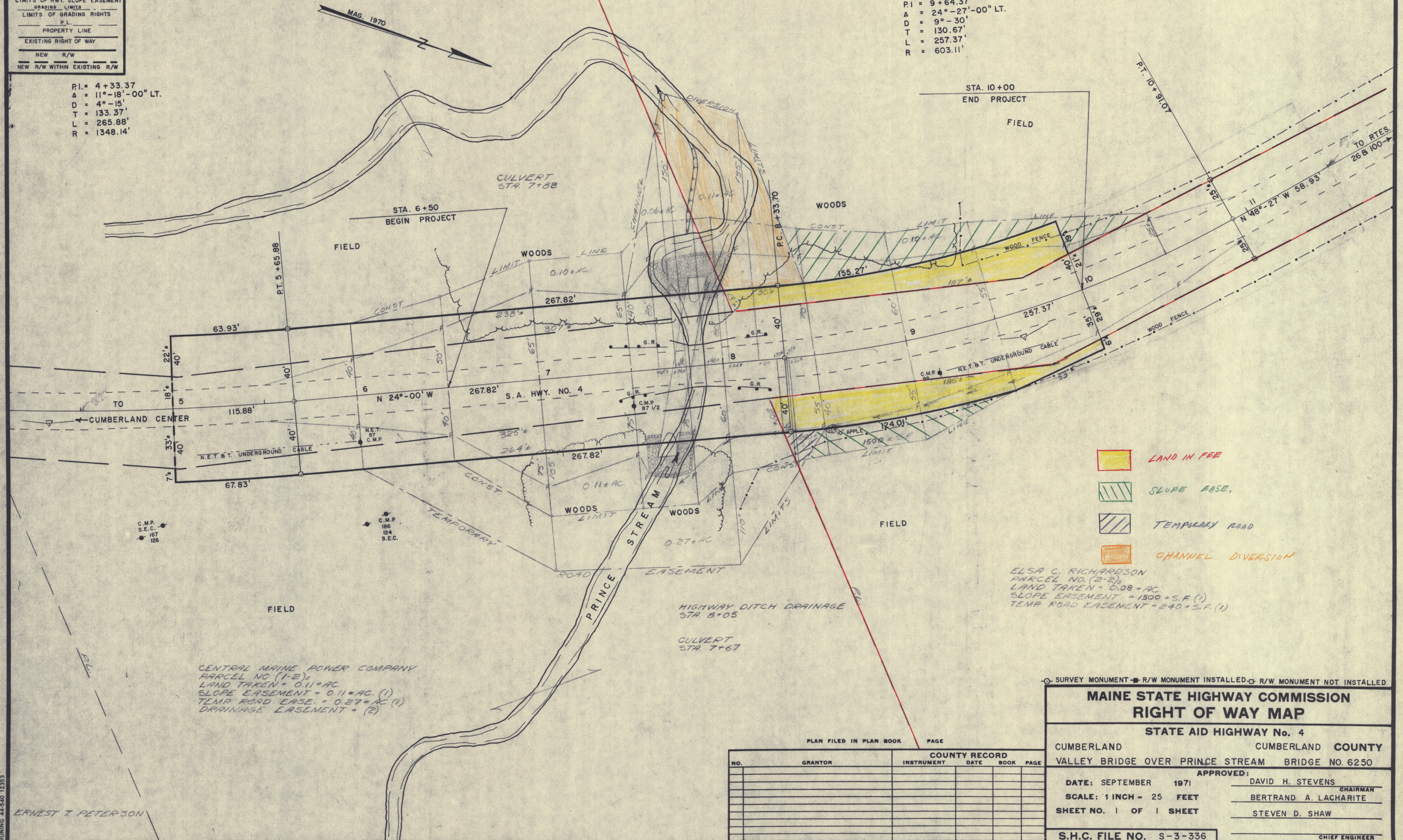
NOTE:
The following utilities are involved
in the subject project:
Central Maine Power Company &
New England Telephone and
Telegraph Company.
Utility Plant shall be adjusted by
the respective Utility Owners.

STATE HIGHWAY COMMISSION
VALLEY BRIDGE
OVER
PRINCE STREAM
IN THE TOWN OF
CUMBERLAND
CUMBERLAND COUNTY
SURVEY
SHEET 2 OF 12 AUGUSTA, MAINE JAN

P.I. = $4 + 33.37$
 $\Delta = 11^{\circ} - 18' - 00''$ LT.
 $D = 4^{\circ} - 15'$
 $T = 133.37'$
 $L = 265.88'$
 $R = 1348.14'$

ELSA C. RICHARDSON
PARCEL NO. (2-1)₂
LAND TAKEN = 0.06*AC.
SLOPE EASEMENT = 0.10*AC. (1)
CHANNEL DIVERSION = 0.11*AC. (1)

P.I = 9 + 64.37
A = 24° - 27' - 00" LT.
D = 9° - 30'
T = 130.67'
L = 257.37'
R = 603.11'



REVISIONS			BY
NO.	DATE	DESCRIPTION	
1			
2			
3			
4			
5			

ITEM	FIGURED	PLOTTED	CHECKED
BASE LINE		P.A.T.	W.L.T.
TOPOGRAPHY		P.A.T.	W.L.T.
R.W. LINES		P.A.T.	A.C.G.
AREAS		P.A.T.	K.J.C.
R.W. MON.		P.A.T.	W.E.B.
CO. RECORD			

[illegible]

SURVEY MONUMENT		R/W MONUMENT INSTALLED		G R/W MONUMENT NOT INSTALLED	
MAINE STATE HIGHWAY COMMISSION					
RIGHT OF WAY MAP					
STATE AID HIGHWAY No. 4					
CUMBERLAND			CUMBERLAND COUNTY		
VALLEY BRIDGE OVER PRINCE STREAM			BRIDGE NO. 6250		
APPROVED:					
DATE: SEPTEMBER 1971			DAVID H. STEVENS		
SCALE: 1 INCH = 25 FEET			BERTRAND A. LACHARITE		
SHEET NO. 1 OF 1 SHEET			STEVEN D. SHAW		
S.H.C. FILE NO. S-3-336			CHIEF ENGINEER		

TOWN'S COPY