

7-1-2011

# Veterans Employment Situation in Maine, 2011

Maine Department of Labor

Maine Center for Workforce Research and Information

Glenn A. Mills

*Maine Center for Workforce Research and Information, [glenn.a.mills@maine.gov](mailto:glenn.a.mills@maine.gov)*

Follow this and additional works at: [http://digitalmaine.com/cwri\\_docs](http://digitalmaine.com/cwri_docs)

---

## Recommended Citation

Maine Department of Labor; Maine Center for Workforce Research and Information; and Mills, Glenn A., "Veterans Employment Situation in Maine, 2011" (2011). *Center for Workforce Research and Information Documents*. Paper 27.  
[http://digitalmaine.com/cwri\\_docs/27](http://digitalmaine.com/cwri_docs/27)

This Text is brought to you for free and open access by the Labor at Maine State Documents. It has been accepted for inclusion in Center for Workforce Research and Information Documents by an authorized administrator of Maine State Documents. For more information, please contact [statedocs@maine.gov](mailto:statedocs@maine.gov).

# Veterans Employment Situation in Maine

Glenn Mills

Director of Economic Research

Center for Workforce Research & Information

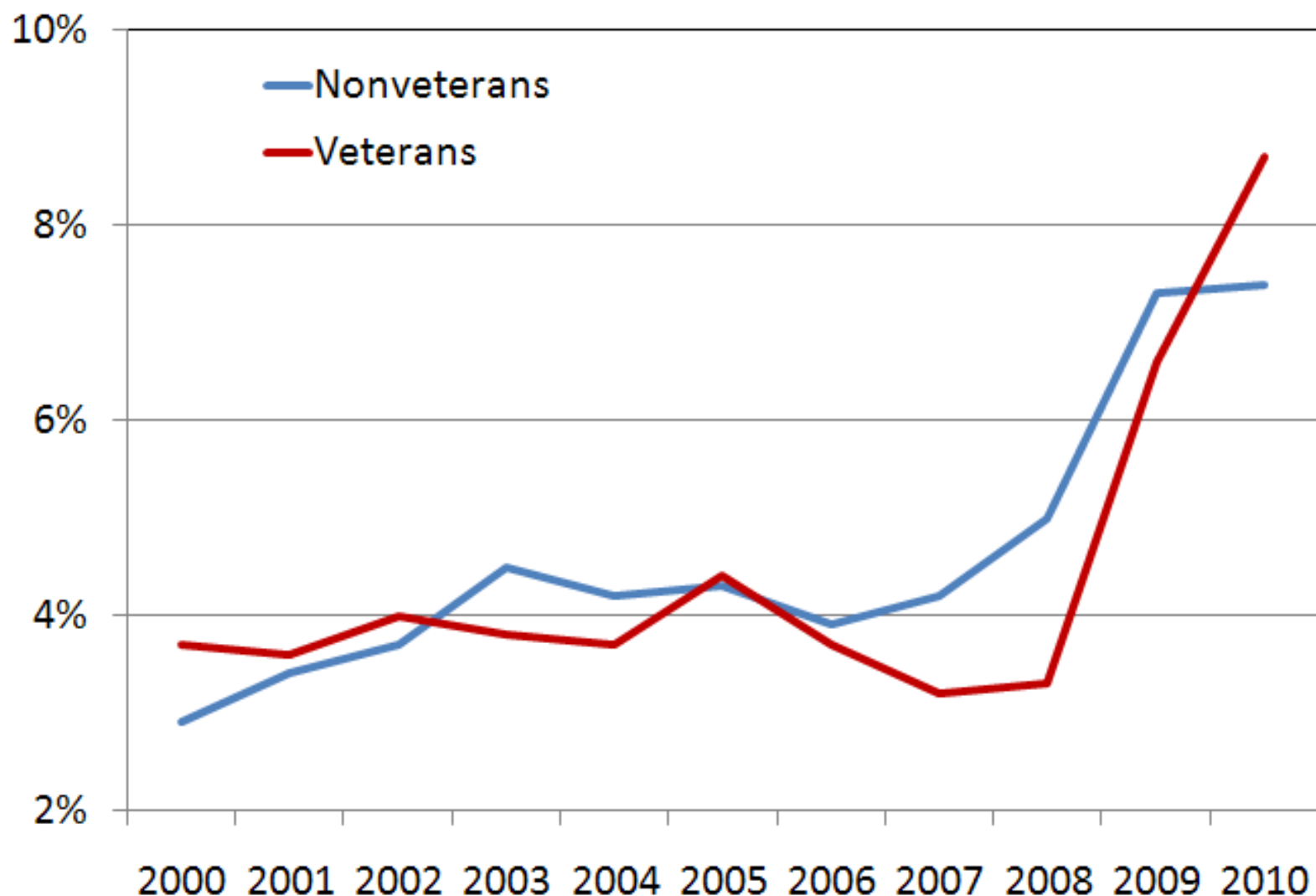
Maine Dept. of Labor

[glenn.mills@maine.gov](mailto:glenn.mills@maine.gov)

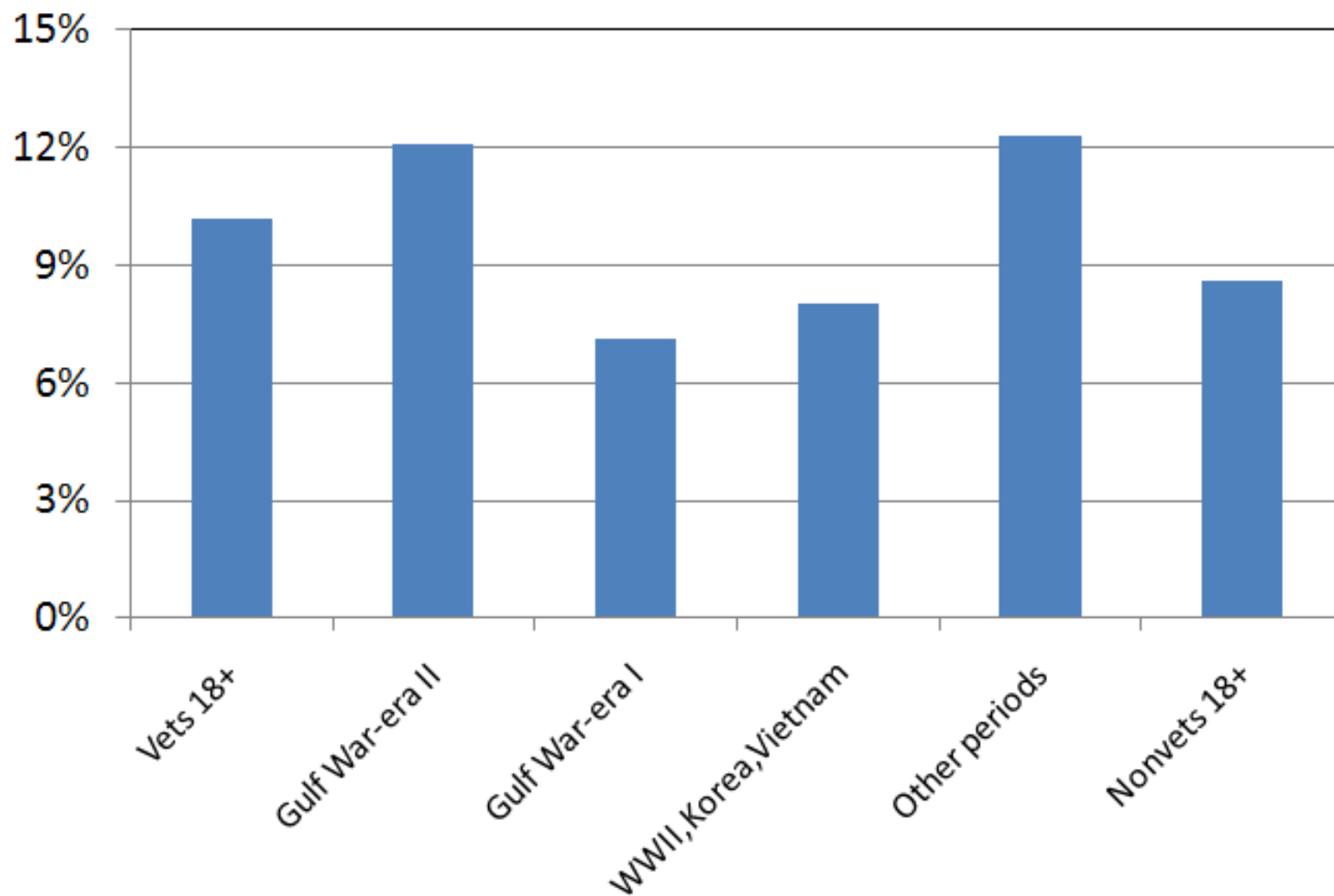
207-621-5192

July 19, 2011

## The unemployment rate for veterans was below the nonveteran rate until 2010 in Maine



## The U.S. unemployment rate for Gulf II era veterans is higher than average *(June 2011)*



**Which statement is most correct about veterans unemployment rates?**

Good indicator of workforce conditions for most veterans.

Poor indicator of workforce conditions for most veterans.

Averages sometimes lump unlike groups together. Some groups of veterans face very different circumstances than others.

**Several factors to consider when comparing  
unemployment rates of veterans and  
nonveterans. Veterans are:**

Mostly male (94%)

Older than the general adult population

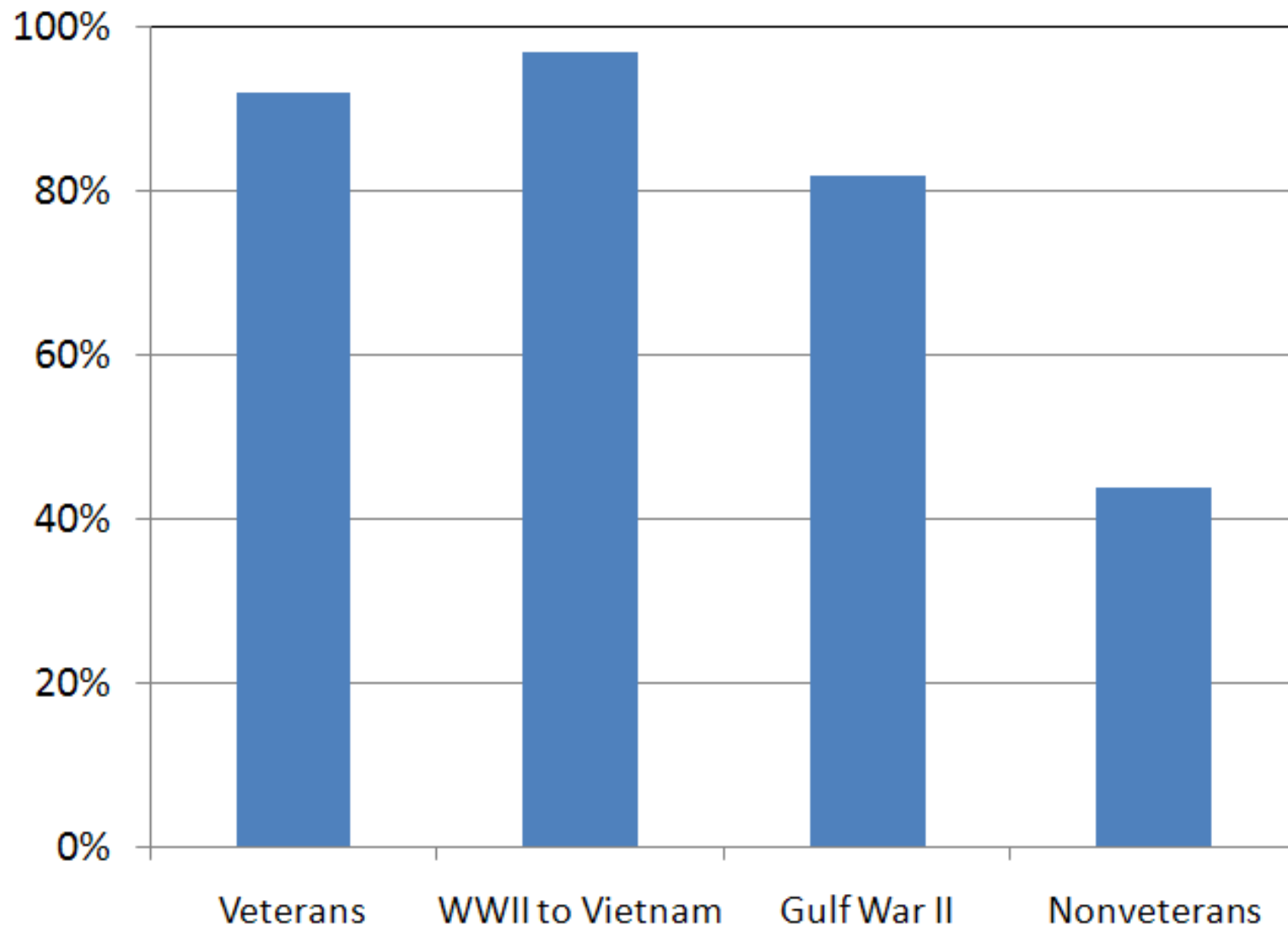
- Vets: 40% age 65+; 66% age 55+

- Nonvets: 17% age 65+; 33% age 55+

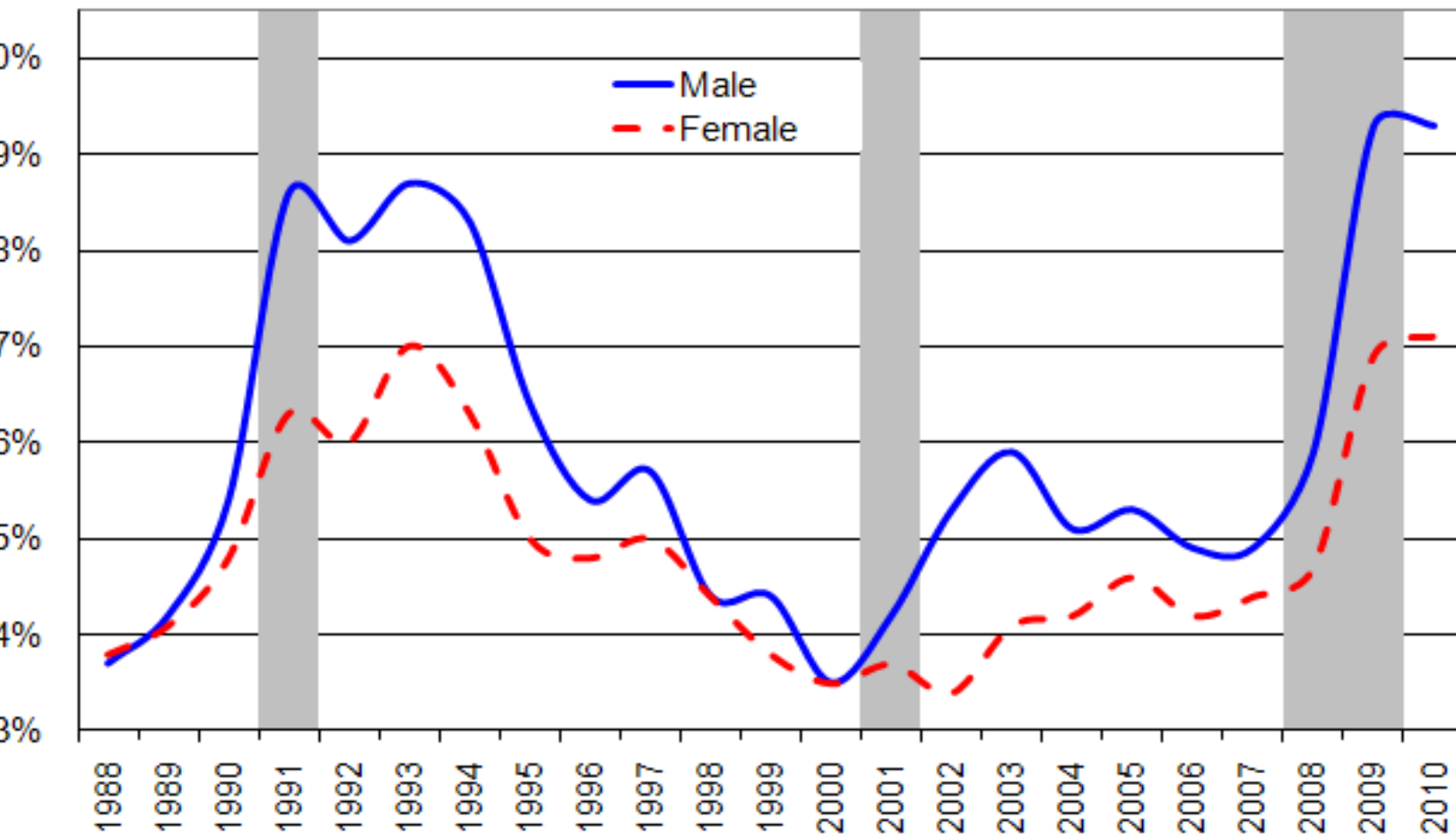
More likely to have a disability that prevents them  
from working.

- Those not looking for work are not unemployed

## Most veterans are male

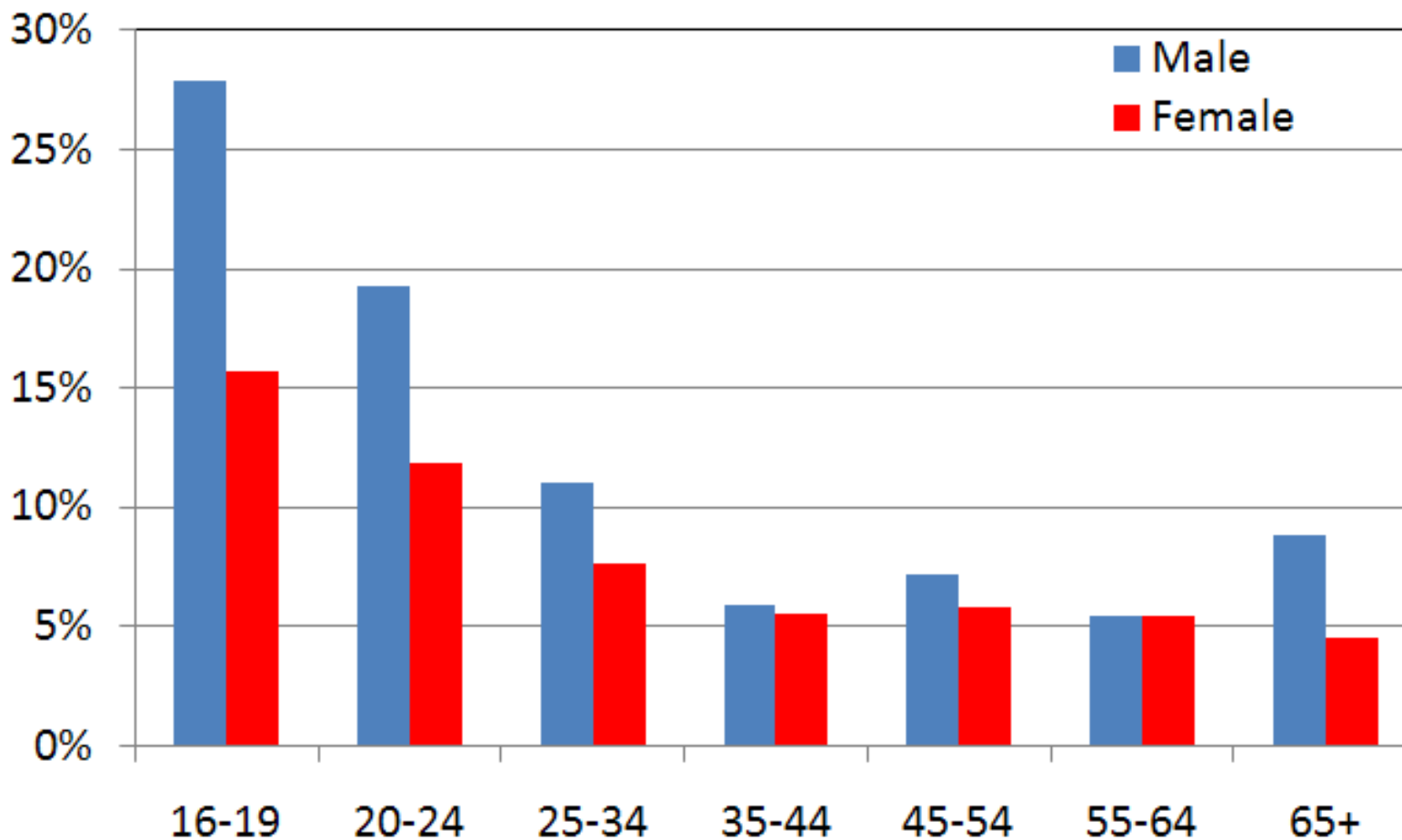


**Unemployment rates are not only higher among men than women, but they increase much more during and shortly after recessions** *(Maine annual averages)*

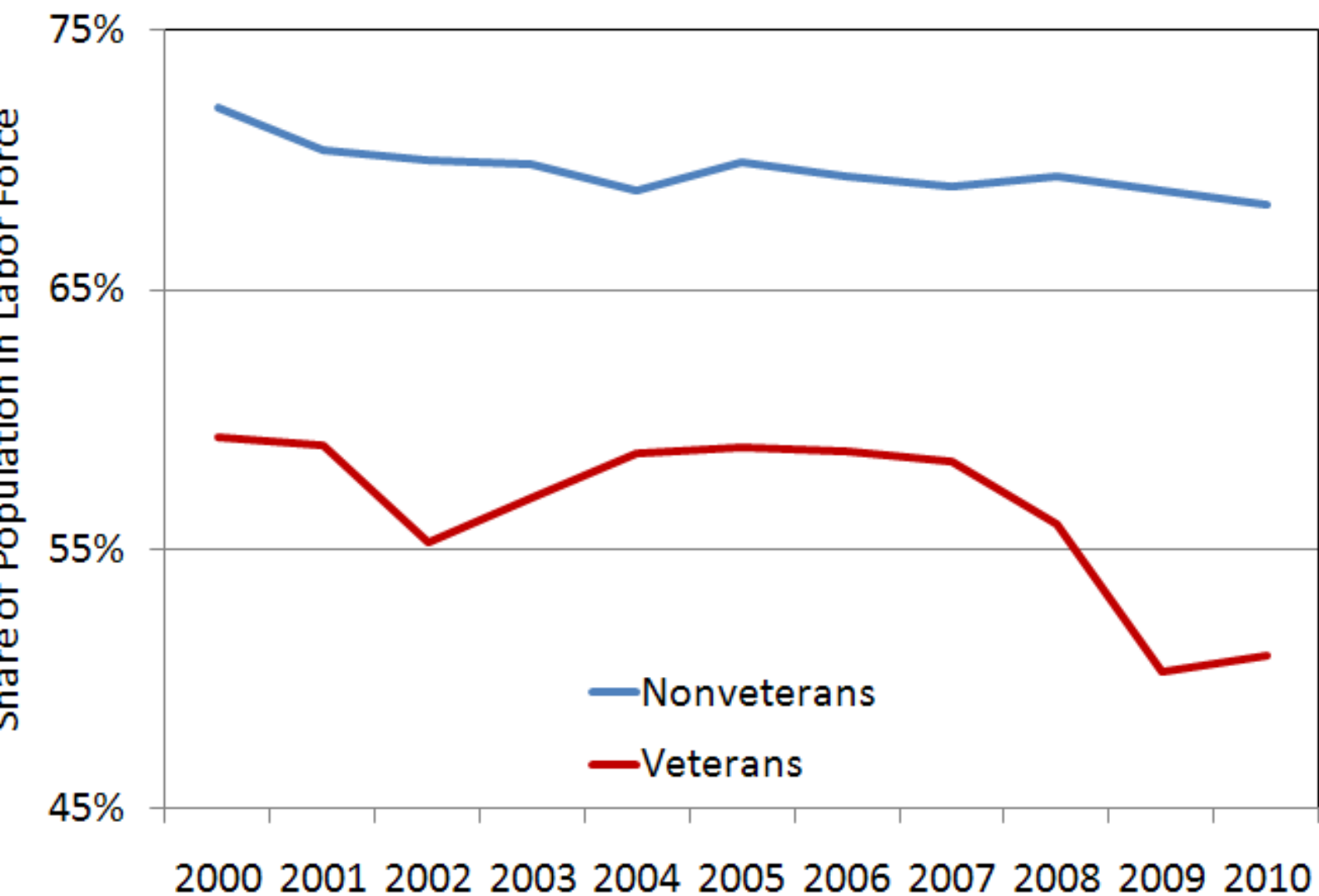




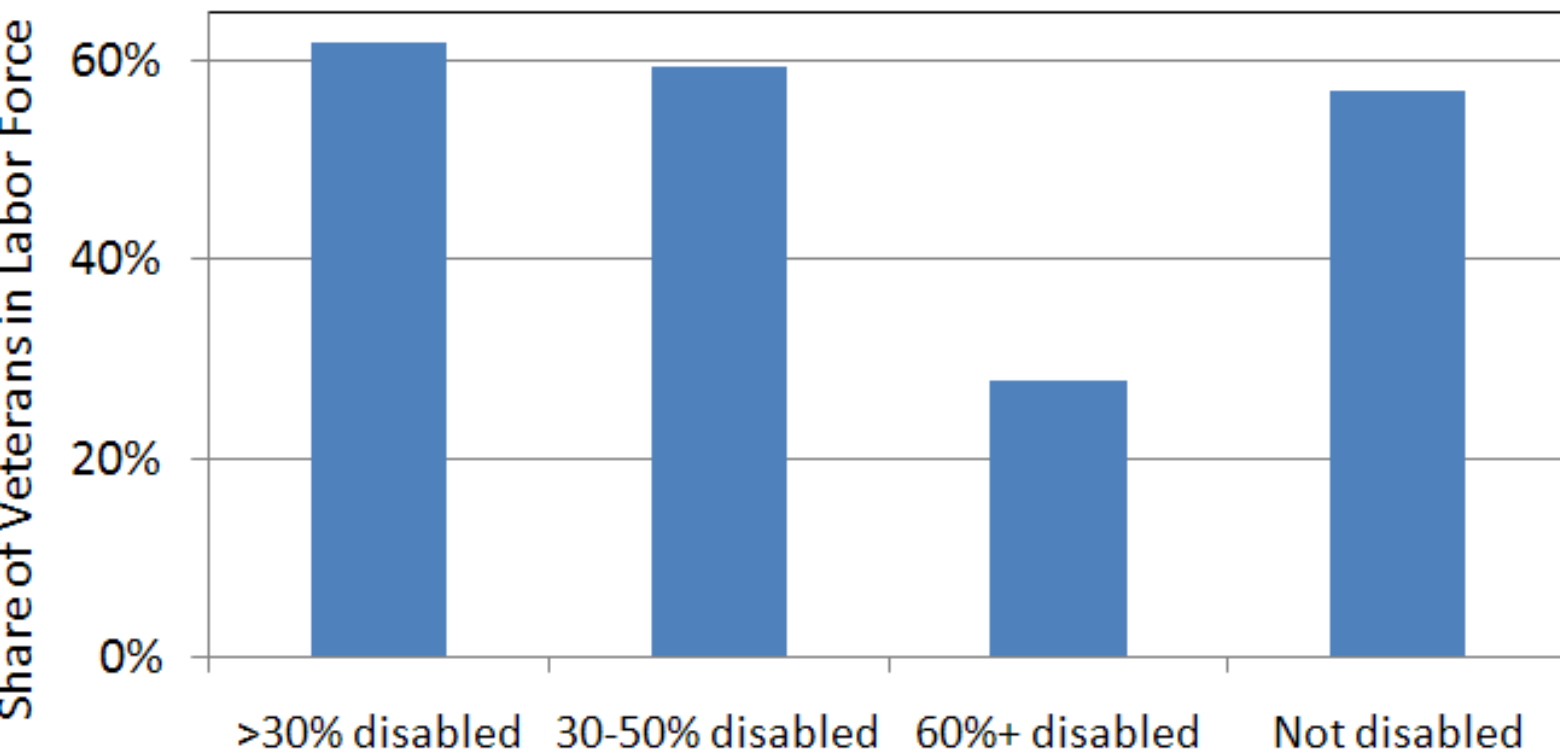
**Unemployment rates are lowest among middle-age and seniors and highest among young males** *(2010 annual average for Maine)*



## The labor force participation rate is lower and declining faster among veterans *(Maine averages)*

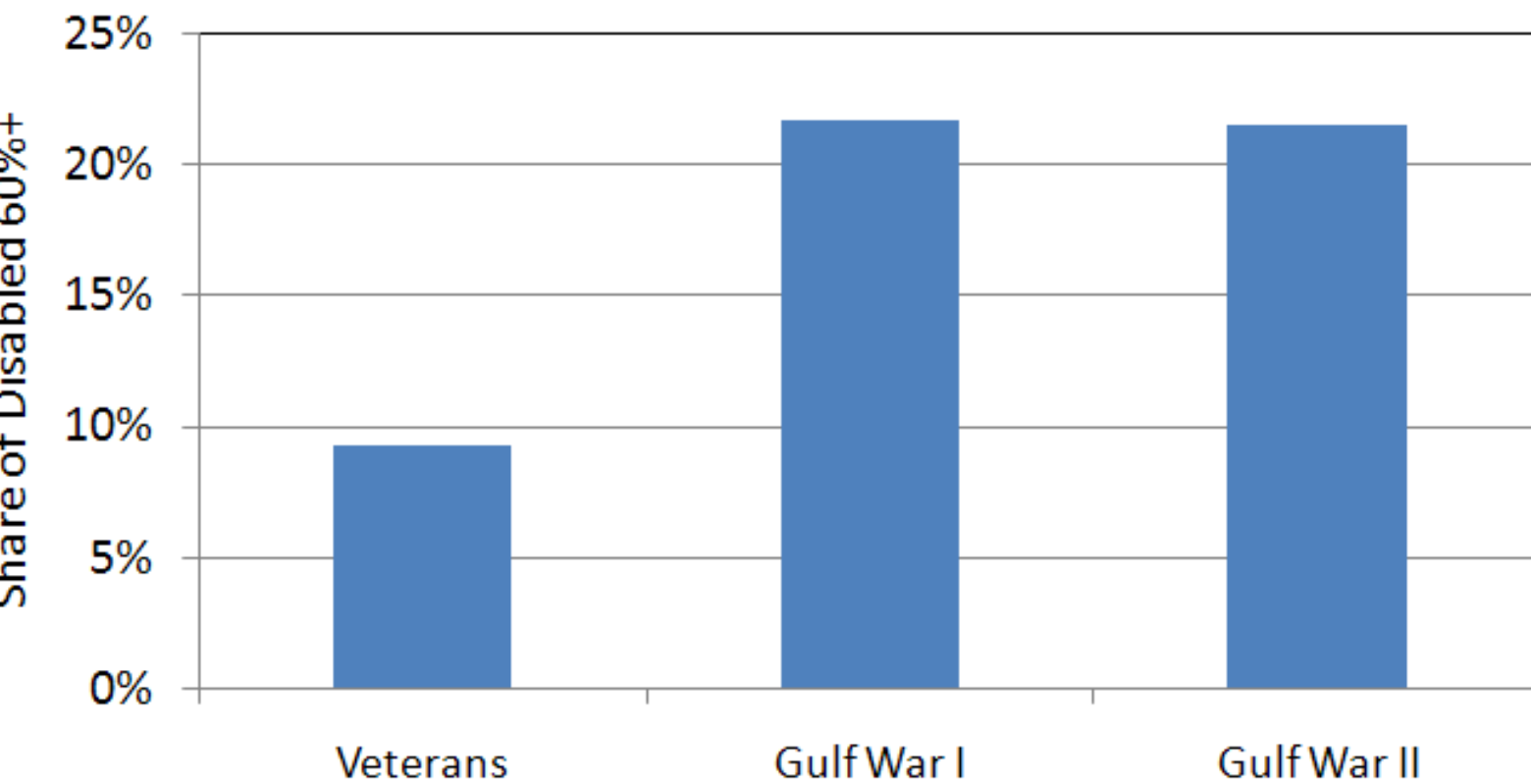


**Veterans with the most substantial levels of service-connected disability are less likely to be in the labor force, while those less than 50% disabled are more likely to be in the labor force (U.S. average, July 2010)**



**Among veterans with a service-connected disability, Gulf era veterans are more likely to be 60% or more disabled than previous groups, which limits their ability to work**

*(U.S. average, July 2010)*



Based on demographic trends, it is likely veterans labor force participation rates will continue to decline as older veterans retire. Unemployment rates for veterans are likely to remain higher than for nonveterans for several years because young men will comprise a rising share of the veterans labor force.

Many disabled veterans are not in the labor force. Official unemployment rates only include those actively engaged in work search.