

Summertime in the Belgrades



... Serving the Central Maine Lakes & Kennebec River Corridor

—A Cider Mill Press Publication—

VOLUME 20, NUMBER 3

Where Were We In '93???

by Esther J. Perne

Your Weekly Guide to the Best of the Belgrade Lakes Region

June 18, 1993

School's Out! Camp's In!

by Esther J. Perne

It was the turn of the century and a new movement was about: summer camps for boys and girls (separate, of course). There was a need to fill the void left by the short school year (a carryover from the days when children were needed to work on the nation's farms) and there was a desire to return to nature and to wholesome, healthy, resourceful values.

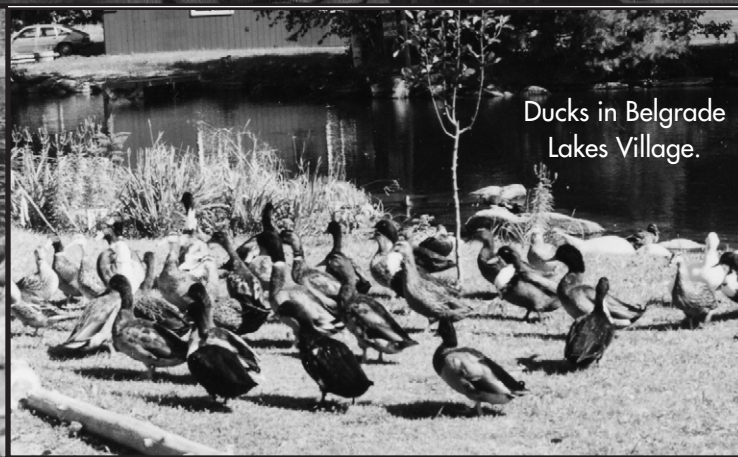
The mid-1850's had marked a period of great indoorness. Night air, indeed most outside air, was



A photo of campers from the twenties at Camp Abena on Great Pond.



Kennebec County Sheriff's Department divers practicing off Peninsula Park in Long Pond.



Ducks in Belgrade Lakes Village.



The Loon Calling Contest! sponsored by Castle Island Camps.

Continued on page 2

Mid-Maine Marine Inc.
885 Kennedy Memorial Drive, Oakland, ME 04963
1/2 Mile West of Exit 127 off I-95 • 1-800-649-2628
www.midmainmarine.com

HARRIS
2018 PONTON BOATS IN STOCK VIEW INVENTORY ONLINE

POWERED BY MERCURY

Join us...and help protect our lakes!

Belgrade Lakes Association
137 Main Street, Belgrade Lakes, Maine 04918
207-512-5150 • www.belgradelakesassociation.org

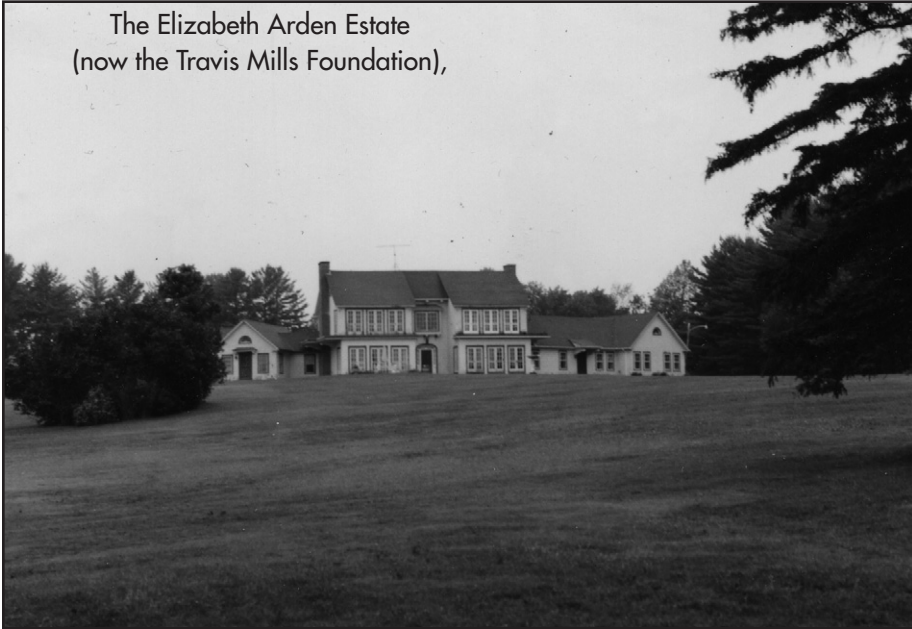
Hamlin's Marine

290 West River Road, Waterville • 207-872-5660
581 Main Road North, Hampden • 207-907-4385
www.hamlinmarine.com

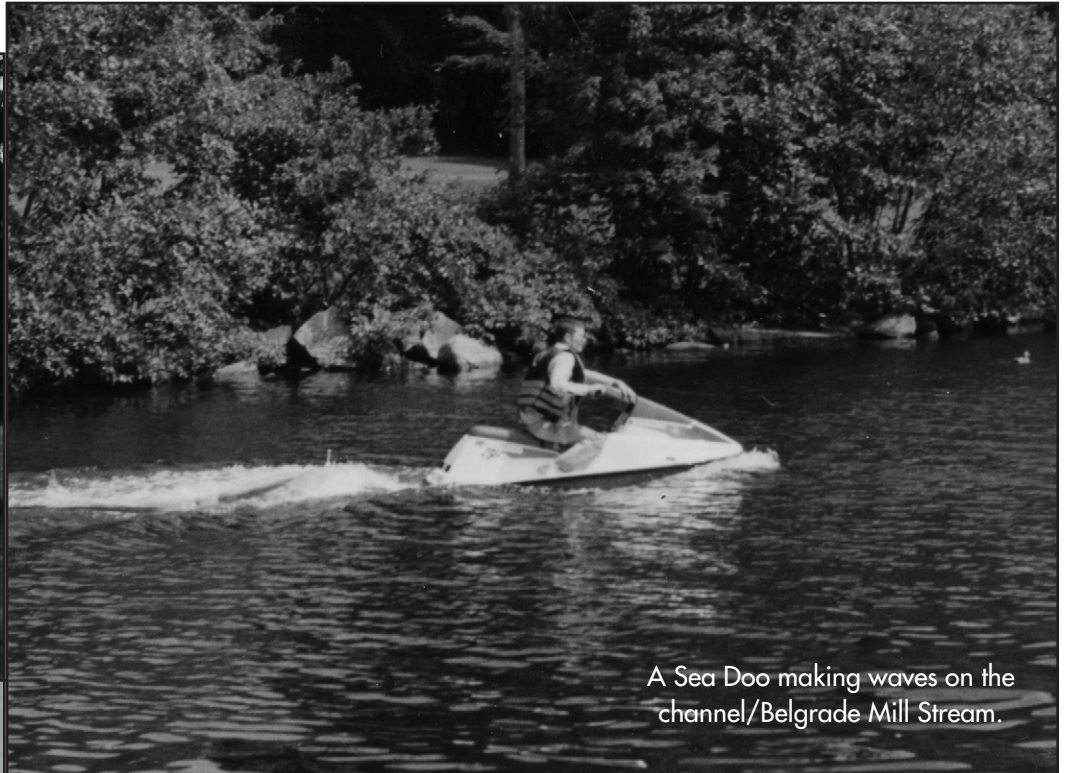
YAMAHA



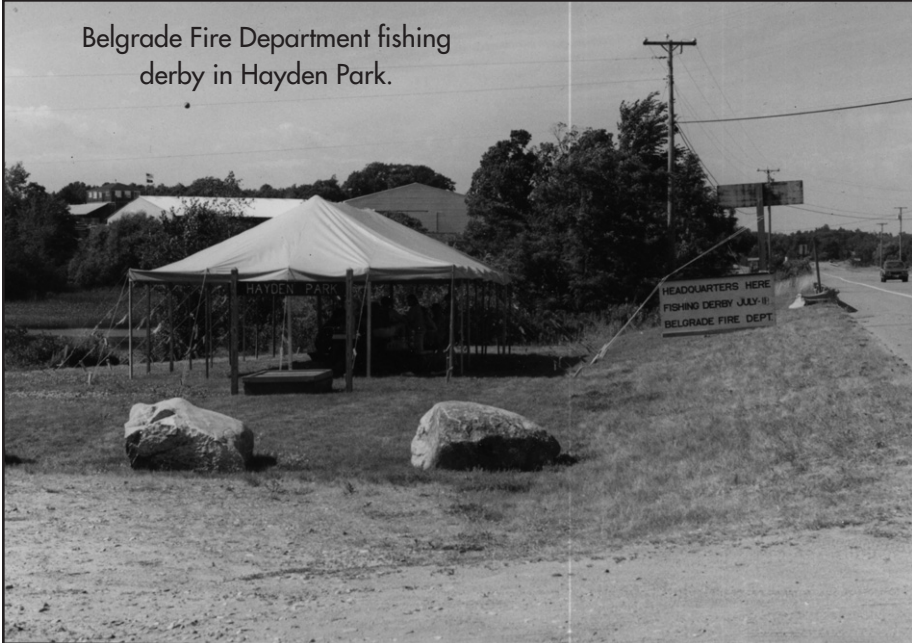
Continued from page 1



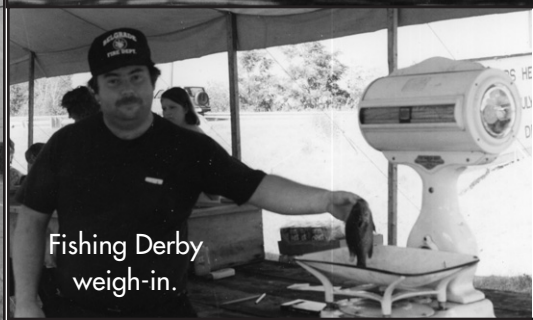
The Elizabeth Arden Estate
(now the Travis Mills Foundation),



A Sea Doo making waves on the
channel/Belgrade Mill Stream.



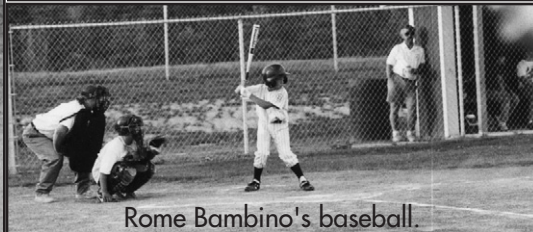
Belgrade Fire Department fishing
derby in Hayden Park.



Fishing Derby
weigh-in.



Snow Pond/Messalonskee Lake Association
placing a "No Wake" sign
at the Oakland boat landing.



Rome Bambino's baseball.

DINNER on the FARM

at Winterberry Farm, Route 27, Belgrade

Sunday, July 15th
starting at 5pm

Join us for a summer evening celebration of local food and farming, featuring a delicious meal, live music and a contradance with caller John McIntire and informal tours of the farm. All ages welcome - special kids' activities throughout the evening.

COST: (includes all food, beverages & activities)
\$ 40 per person
children 4-13 years: half price
free for children 3 years & under

ADVANCE RESERVATIONS
REQUIRED
for reservations/more information,
visit the Farm, call 649-3331,
find us on FaceBook, or visit
www.winterberryfarmstand.com

proceeds to benefit ...where children & veggies grow

Love where you live

Belgrade Lakes Village location! Permanent dock on Great Pond Stream. Beautifully remodeled spacious home with an oversized 2 car garage.

\$279,000

Over 3 acres on Great Pond! Acreage is wide open and level, with over 200 feet of waterfront. Large 3 bedroom home with 2 car garage.

\$439,000

LAKEHOME

GROUP

207-495-2500

REAL ESTATE

75 Main Street, Belgrade Lakes ME 04918 • Lakehomegroup.com



Table of Contents

Where Were We In '93??..... 1-2

Table of Contents.....3

Oakland: Blueprint for the Future..... 3

The Luckiest Boy: The Guide Ghosts of Great Pond..... 4

Take It Outside with Pete Kallin: Future Lake Stewards..... 5

Directory of Great Visits: Get Out and Go..... 6-7

The Dams Keeper Report..... 7

Greater Gardiner Day/Whatever..... 7

Calendar of Events: Dozens of Outings..... 8-9

The Kennebec Corridor Map 9

Belgrades and Beyond Map..... 10-11

Upcoming: Put These Outings on the Calendar..... 12

Conservation Too: Managing Invasives on a Farm..... 13

Recyclable Plastic..... 13

Accommodations: Stay For Awhile..... 14

Notes and News Everyone Can Use..... 14-15

Dining: Family-Friendly and Fun..... 15

Business Directory: Goods, Services, More..... 16-17

Barkley Reviews "Saving the Family Cottage" 18

Norlands Strawberry Festival..yum, yum, yum..... 19

To the Editor

Thank you for your coverage of the alum treatment we're doing on East Pond to alleviate algae blooms. The visibility you provided is valuable on a number of levels. We should, however, clarify that the source of some of the funding for the alum treatment of East Pond came from the U.S. Environmental Protection Agency under Section 319. The funding is administered by the Maine Department of Environmental Protection in partnership with the EPA.

I was remiss in not making that linkage clear in my statement and I wouldn't want to slight our true benefactors. We are most appreciative of the EPA's support and hope to continue helping the agency with its important work here in Maine. We thank them for their support and for their confidence in the method we're using for the restoration of East Pond's chemical balance. It will go a long way toward returning the area to its former pristine condition.

The project has taken the contributions of many entities, all of whom have our sincere thanks.

Gerald Tipper, Funding Chair
East Pond Associatio

Town of Oakland Embarks on Comprehensive Planning Process

The Town of Oakland is currently in the process of crafting a Comprehensive Plan with the goal of creating a blueprint for the future. Fifteen community members have volunteered to join the Oakland Comprehensive Planning Committee (OCPC), which is facilitating the process.

A Comprehensive Plan is a broad, long-range plan intended to guide the growth and development of a community. At its core, a Comprehensive Plan reviews the history of the municipality, evaluates its current status, and outlines a vision for its future. It typically describes the community's natural resources, housing, economy, infrastructure, transportation, recreation and public spaces, and community facilities, and provides recommendations for those components.

For Town Manager Gary Bowman, a Comprehensive Plan represents an important milestone for Oakland. "We have embarked on a two-year process to inventory the Town of Oakland and gather public input on a wide range of topics; this magnitude of data hasn't been compiled in over two decades, and it is critical for leading the Town in its desired direction for the next twenty years."

Volunteers on OCPC have convened for several months to build an inventory and to create methods of collecting public input. Their dedication to the process has impressed Bob Nutting, who participates in OCPC. "It's very special to have fifteen community members volunteer two years of their time, energy, and skill. Their volunteerism illustrates the passion OCPC members have for the Town of Oakland," said OCPC Chair Bob Nutting.

OCPC emphasizes the importance of community involvement in the Comprehensive Plan process. Input from the community is critical, as it shapes the vision for the Town's future.

This summer, all Oakland residents and businesses will have the opportunity to express their thoughts on Oakland's core values, possibilities, needs, and direction. OCPC looks forward to the community's participation in its efforts to collect input, including public workshops and a community-wide survey, which will be going live digitally and mailed to Oakland residents on Monday, July 2nd. The first public workshop will be held at the Town of Oakland's Cascade Room (6 Cascade Mill Rd, Oakland, ME 04963) on Thursday, June 21st at 4:00pm.

Continued on page 7...

Summertime in the Belgrades

--A Cider Mill Press Publication--
PO Box 290, Belgrade Lakes, ME 04918
Editor: Esther J. Perne, 207-495-3777 • ebelnews@earthlink.net
Layout Design: Michael Breault, 207-578-0226 • mo.breault@gmail.com
Webmaster : Gregor Smith • gregor@roadrunner.com
www.sumbelnews.com

This publication is copyrighted ©MMXVIII, Cider Mill Press Publications, All Rights Reserved.

CAYER SECURITY

RESIDENTIAL • COMMERCIAL • FINANCIAL

- Burglary & Fire Alarms
- Alarm Monitoring
- Access Control
- Video Surveillance

VOTED
Greater Waterville's
BEST
SECURITY COMPANY
5 Years Running
2013 - 2017

453-9177
www.cayersecurity.com

NORTH BAY ESTATES
ROUTE 8 • NORTH BELGRADE

~ FOR SALE ~

Custom Built Homes
by *Craig's Carpentry*
1 & 2 acre lots
with lake views from
Great Pond overlook
Craig Alexander
cell (207) 649-3749 • crgsnbe@yahoo.com

Belgrade Regional Health Center
Your family's home for health & wellness

Aaron "Jack" Barnard, PA
Call for an appointment with Jack today!

207.495.3323 • BelgradeCHC.org



—The Luckiest Boy— Trouble On the Lake—Another Ghostly Sighting

by Rod Johnson

The Guide Ghosts of Great Pond are certainly not a new phenomenon in these parts. Several years ago they were nearly caught partying out on Oak Island by Phil Cobb when he paddled his antique canoe there to check out mysterious music. Rod and Doris Johnson had a run-in with the ghosts a few seasons back, when returning from cousin Cary's camp around midnight. Last summer three separate incidents were called into the authorities by flatlanders, all relating to strange happenings on Great Pond.

Each time the Guide Ghosts were suspected as being the guilty culprits—at least by the locals. The cops seem to think we're all crazy up here and really don't follow up much. The Guide Ghost's M.O. seems to include foggy weather conditions (assumedly when no one can get a good peek at their faces,) and most times they seem to like to party on one of the islands, occasionally in their boats. One incident reported last year came from a fisherman caught out on Whale Rock, waiting for the fog to lift. He was nearly rammed by an old double-ended guide boat. His report included a vague description of the driver, said to be "a skeletal soul with wispy white hair." He also noted a rancid odor smelling of varnish, turpentine and home brew as the boat slid by, actually brushing his own Ranglely lapstrake.

The most recent return of the G.G.'s. was just a couple of weeks back. It caused quite a ruckus with Doris and I, as we were actually caught in a strange weather phenomenon that included a period of unexpected fog. We'd left the Mill Stream by boat after a nice meal at the Village Inn. There we had reconnected with old friends Steve and Edie Dubord and were invited for a "small snifter" (actually Uncle Byron's term for a night cap) at their summer home on Gleason's Shore. We hadn't caught

up with them for years and were wicked excited to do so. The dusky ride over with stars starting to appear was wonderful as the old '65 Lyman 19-footer, a gift from Bill and Joan Witkin, rode with her bow high and proud. The old GM 165 horsepower V/6 was cuttin' um off just right at 3500 rpm's. We arrived asap and totally enjoyed the long chat time we had. Time flew by and soon midnight was approaching and the little bird said it was time to go home. As we said our goodbyes and thanks to our hosts, we all walked out onto the dock. The sky did look a bit ominous, but not enough to be concerned, just another nice night on Great Pond. We could high tail it and be home in 15 minutes. NOT SO MY FRIENDS. We left Steve and Edie and cranked up the revs of the so-called Iron Horse motor and headed out through a tricky area crossing the submerged esker that connects Pine Island and Horse Point. I'd done it a thousand times since childhood and knew the general route, as many of the marker buoys were not there when we were kids. We had learned and always used landmarks. After leaving Oak Island on our port side and heading for the gut between the south end of Hoyt's and Long Point, I really had no worries about depth unless we slipped to starboard and got mixed up with the white ledges. A slight south wind had crept in and dampness was present. We cuddled for warmth while standing at the helm with the dual exhaust pipes bellowing in the night, smiling and realizing we had the world at our hands. How lucky could we be. Then, out of nowhere, the engine started skipping and quickly things changed. Within less than a minute the old girl had quit running and we were adrift. Not the end of the world, but it got our attention. Darn, the bliss is over, what in the devil is wrong with this. One of us muttered something less polite.

Continued on page 12...



winery & distillery

Locally Produced

Internationally Recognized



Absinthe Verte Awards:

- Downeast Magazine Best of Maine 2016
- Silver Medal, NY International Spirits Competition 2018
- Bronze Medal, NY International Spirits Competition 2015

Limoncello Award

- Bronze Medal, SFIC 2018

152 Fairfield St, Oakland, ME 04963 | 207-465-3007
www.treespiritsofmaine.com

Support at any point in your life

- Skilled nursing, personal care support and companionship services available.
- We can provide assistance with housekeeping, errands, and hygiene.
- Post-operative, short term, respite, and long term care available.
- As little as four hours a week up to twenty four hours a day

**Contact Jillian Jolicoeur, RN-BSN, MHA today
for your free in home assessment!**

 **Assistance
PLUS**



1-800-781-0070 ext. 408
www.assistanceplus.com



— Take It Outside —

Although according to the calendar summer has barely begun, it is already flying by with lots going on. This has been another busy week with lots of activities with the various groups I work with. For the most part, the weather has been dry and a bit windy, good for getting in a bit of hiking. I spent one afternoon clearing some blowdowns on the Great Pond Loop of The Mountain Trail with fellow 7-Lakes Alliance (former BRCA) Stewardship Committee volunteers, Peter Roderick and Andy Cook. The 7-LA Stewardship volunteers spend a lot of time and effort keeping the local trails in good shape. If you would like to help, please sign up with Mary Kerwood at the MLRC to get on our volunteer list. The work is actually a lot of fun and you will meet some interesting, dedicated people.

The day before, I had been hiking the trail and met the Blauvelt Family from Farmington. Doug Blauvelt is the Cubmaster for the local Cub Scout Pack and the Assistant Scoutmaster for the Boy Scouts. He was scouting the Mountain Trail for possible hikes with the Cubs, Boy Scouts, and the 4H Club of Farmington. They had hiked Mount Phillip in the past and wanted to look at some of the other trails in the area to do hikes of different lengths with various groups. Helping him in that task were Daniel (Cub Scouts and 4H), Tameeka (4H), Allison

Continued on page 15...

Training Future Lake Stewards

by Pete Kallin



Peter Roderick (with helmet, chaps, and saw) and Andy Cook clearing blowdowns across trail.



Blauvelt Family from Farmington L-R: Doug, Daniel, Tameeka, Alison, and Tyleek.

FOR SALE
HOANG
REALTY
623-0623



Amy Gray:
478-8921



Dave Barnard:
441-8486



Heidi Libby:
603-275-1580



Hoa Hoang:
485-1485



George & Erica O'Connor:
485-0277



Gail Dostie:
242-2017



Heidi Witham:
465-5764

Privacy, and 540 feet on Three Cornered Pond



AUGUSTA – This year-round home offers more features and advantages than you can easily count. Foremost among them: A 540-foot expanse of waterfront, truly a rare find; and a private, super-convenient location just 15 minutes from the city center.

Quality-built in 2003, the expanded (2,150 square feet) modified Cape sits on a 6.7-acre lot that slopes gently down to its level frontage on quiet, 181-acre Three Cornered Pond. It has a dock system. Residents here benefit from low boat traffic (there is no public access); and from

a lively fishery that includes bass and pickerel.

The property, which has hosted at least one wedding, is versatile. Horse-lovers need only add a barn. As a vacation rental, the home has proved a significant income-producer for the past four years. And, there is expansion potential: The adjacent, wooded five acres are also offered, with the buyer of this property having right of first refusal.

The total water frontage would then be 1,300, and the opportunity to create a family compound would be first-rate. Note, too, that a buyer

purchasing the five acres would be able to subdivide them after five years.

The three-bedroom, two-full-baths-with-tubs home combines classic Maine lakefront character with fine finishes, such as the hardwood floors. The big, tiled kitchen is dine-in; the master suite has the second level all to itself. Highlights include the cathedral-ceilinged great room with wood-burning fieldstone fireplace; the deep, wraparound porch that adds living and dining space in finer weather; and sweet sunrises, year-round.



The property at 3240 North Belfast Ave., Augusta, is listed for sale at \$425,000 by Merline Douglas of Hoang Realty in Augusta. For more information or to arrange a private viewing, please contact Merline at 485-0138 or at merlinedouglas@yahoo.com.



Karen Ramsay:
441-8186



Lisa Hicks:
592-5374



Michael Guajardo:
395-6593



Merline Douglas:
485-0138



Pam Armour:
314-7445



Brenda Adler:
215-5599



Melody Main:
485-2991



Remy Henry:
242-0450



Sarah Allarie:
242-9842



Calendar Directory

TOWN BY TOWN...

GREAT VISITS, AWESOME OUTINGS – ART, MUSIC, CULTURE, HISTORY, RECREATION, FARMERS' MARKETS, TRAILS, SCENIC SITES, AND MORE...

AUGUSTA

- **Viles Arboretum**, 224 acres with 6 miles of year round walking trails, including art and sculpture trail, open dawn to dusk, Visitor Center open Monday-Friday, 9 am-4 pm, admission free, 626-7989, www.vilesarboretum.org, 153 Hospital Street
- **Farmers' Market at the Arboretum**, indoors, Friday 1-5 pm
- **Art in the Capitol**, Maine Arts Commission monthly self-guided exhibits in State House hallways (Mon-Fri 8 am-5 pm), Blaine House (call for times), and Maine Arts Commission Office (8:30am-4:30 pm), 287-6746, mainearts.maine.gov
- **Children's Discovery Museum**, CDM, hands-on displays, activities, Tuesday-Thursday 10 am-4 pm, Friday-Saturday 10 am-5 pm, Sunday 11 am-4 pm, admission, 622-2209, www.childrensdiscoverymuseum.org, 171 Capitol Street
- **Danforth Gallery**, Jewett Hall, art exhibits, UMA-1234, www.uma.edu
- **Governor's Mansion**, 1830 Blaine House, Tuesday-Thursday 2-4 pm, 287-2121, www.blainehouse.org, State Street
- **Holocaust and Human Rights Center of Maine**, Michael Klahr Center, Monday-Friday 8 am-4 pm, 621-3530, www.hhrc.uma.edu, University of Maine at Augusta, off Route 27
- **Kennebec Historical Society**, Wednesday-Friday 10 am-2 pm, 622-7718, www.kennebechistorical.org, 107 Winthrop Street
- **Maine State Museum**, Tuesday-Friday 9 am-5 pm, Saturday 10 am-4 pm, \$2 adults, \$1 ages 6-18, 287-2301, www.maine-statemuseum.org
- **Maine State House**, Hall of Flags, House and Senate Rooms, Klir Beck dioramas, Monday-Friday 8 am-5 pm, book tours at Maine State Museum, walk-ins welcome 9 am-1 pm, 287-5600, www.maine.gov, State Street
- **Maine State Library**, Monday-Saturday opens 9 am, 287-5600, www.maine.gov/msl/, State Street
- **Museum in the Streets**, walking/history tour, www.augusta-maine.gov, Water Street/downtown.
- **Old Fort Western**, 1754 fort, house, store, 1-4 pm daily, admission \$6, 4-14 years \$4, 626-2385, www.oldfortwestern.org, Cony Street
- **Riverfront Park**, boat launch, Greenway Trail, playground, eastside Kennebec River
- **Kennebec River Rail Trailhead**, Maine State Housing Authority parking lot, 623-8162, www.krrt.org, Water Street
- **University of Maine at Augusta Fitness Trail**, 2 miles of wooded trails, near Civic Center, Route 27
- **Farmers' Market at Mill Park**, Tuesday 2-6 pm, 626-2305, www.farmersmarketmillpark.org/, North Water Street
- **Farmers' Market at Turnpike Mall**, 549-5112, Wednesday and Saturday 10 am-1 pm, Western Avenue

BELGRADE LAKES

- **Belgrade Lakes Market**, 320-8303, careybor@yahoo.com, Sunday 8 am-1 pm, Main Street

- **Great Pond Mailboat**, 592-1537, Monday-Saturday 9:15 am, Post Office, Main St.
- **The Belgrade Community Center for All Seasons**, pool and lakefront, gym, playground, picnic area, rec programs, 495-3481, www.belgrademaine.com, 1 Center Drive
- **Union Church Coffee House**, check for schedule, 7:30 pm, \$5, 495-3599, www.unionchurchmaine.org, Main Street
- **Belgrade Historical Society**, 495-2973, belgradehistoricalsociety.org
- **Belgrade Lakes Market**, Sun 8 am-1 pm, Main Street
- **Peninsula Park on Long Pond**, picnic tables, Main Street
- **Maine Lakes Resource Center**, 512-5150, www.mainelakesresourcecenter.org, 137 Main Street

FAIRFIELD

- **Fairfield Historical Society**, 1890 Cotton-Smith History House, every Tuesday 9 am-12 noon and 1-4 pm and second Saturday of month, 453-2998, www.fairfieldmehistoricalociety.net, 42 High Street
- **Farmers' Market**, 948-5724, Wednesday 2-6 pm, Saturday 9:30 am-1:30 pm, Nazarene Church parking lot, 81 Main Street

FARMINGTON

- **Farmington Historical Society, Titcomb House Museum**, 778-4275, Wednesday and Saturday, 11 am-2 pm, July-August, www.farmingtonhistory.org, 118 Academy Street
- **Nordica Homestead Museum**, opera singer Lillian Nordica costumes, jewelry, mementos, 778-2042, Tuesday-Saturday 10 am-12 noon and 1-5 pm, Sunday 1-5 pm, www.lillianordica.com, 116 Nordica Lane, Holley Road
- **Contra Dance**, 491-9928, www.starleft.org 2nd Saturday of the month, all welcome, 6:30-7:30 pm family dance, 8-11 pm regular dance, admission, Grange Hall, Bridge Street, Route 43, West Farmington
- **University of Maine campus and Arboretum**, four walking tours with informal guide pamphlet to campus trees, 581-1541, www.umaine.edu/arboretum/, downtown
- **Farmers' Market**, 778-6602, Friday 9 am-2 pm, Better Living Center parking lot, Front Street; Saturday 8 am-12 noon, Main Street
- **Meetinghouse Park and Gazebo**, weekly concerts throughout summer, downtown
- **Fairgrounds**, events throughout summer, Franklin County Fair in September, High Street

GARDINER

- **Artdogs and Circling the Square Fine Art Press**, Friday 1-5 pm, Saturday 10 am-4 pm, 582-6600, www.theartdogs.com, 275-277 Water Street
- **Johnson Hall Performing Arts Center**, 582-7144, www.johnsonhall.org 280 Water Street
- **Monkitree**, art exhibits, 512-4679, www.monkitree.com, Tuesday-Friday 10 am-6 pm, Saturday 12-6 pm, 263 Water Street
- **SpinOff Studio**, 588-7297, spinoffstudio.org, Monday-Friday 8:30 am-4:30 pm, 405 Water Street
- **Farmers' Market**, 512-8022, www.gardinerfarmersmarket.org, Wednesday 2-6 pm, rain or shine, The Common
- **Kennebec River Rail Trail**, 623-8162, www.krrt.org, access near Gardiner/Randolph Bridge, 6.5 miles to Augusta
- **Waterfront Park**, picnicking, events throughout summer, Kennebec River

GREENE

- **Araxine Wilkins Sawyer Memorial**, free entertainment programs, monthly - Friday 2 and 7 pm, 946-5311, www.sawyer-foundation.com, 371 Sawyer Road, off Route 202

HALLOWELL

- **Harlow Gallery**, Kennebec Valley Art Association, 622-3813, www.harlowgallery.org Wed- Sat, 12-6 pm, 160 Water Street
- **Gaslight Theater**, 626-3698, www.gaslighttheater.org City Hall, 1 Winthrop Street
- **Museum in the Streets**, history/walking tour, www.historichallowell.org, downtown
- **Farmers' Market**, 622-1350, Sun 3-6 pm, Water Street
- **Vaughn Woods and Homestead**, 166 acre park/trails/homestead, Middle Street
- **Kennebec River Rail Trail**, www.krrt.org, to Augusta, Farmingdale/Gardiner, Water Street
- **Waterfront Park**, deck/walkway on Kennebec River, North Water Street

HINCKLEY

- **L.C. Bates Museum at Good Will-Hinckley School**, early 20th century natural history and cultural exhibits, nature trails and camps, adults \$3, up to 17 years \$1, 238-4250, www.gwh.org Wednesday-Saturday 10 am-4:30 pm, Sunday 1-4:30 pm, Route 201

KINGFIELD

- **Ski Museum of Maine**, 265-2023, www.skimusuemofmaine.org, 256 Main Street
- **Stanley Museum**, 265-2729, www.stanleymuseum.org, memorabilia/displays on photographs, violins and Stanley Steamers, Tuesday-Sunday 1-4 pm, 40 School Street

LIVERMORE

- **Washburn-Norlands Living History Center**, 18th-19th century mansion/farmstead/schoolhouse, library, chapel, 897-4366, www.norlands.org, admission, living history tours Tuesday and Thursday 1-4 pm, 290 Norlands Road

MADISON

- **Lakewood Theater**, Maine's Summer Theater, Young Performers Camp, 474-7176, www.lakewoodtheater.org, Route 201
- **Skowhegan School of Painting and Sculpture**, 474-9345, www.skowheganart.org, summer evening artists lecture series, East Madison Road

MONMOUTH


- **Monmouth Museum**, local and regional Maine history, Wednesday-Sunday 1-4 pm, 933-2287, www.monmouthmuseum-inc.org, 751 Main Street
- **The Theater At Monmouth**, The Shakespeare Theater of Maine, Cumston Hall, 933-9999, www.theateratmonmouth.org, Main Street

MOUNT VERNON

- **D.E.W Animal Kingdom**, Zoo, 293-2837, 918 Pond Rd, Route 41

NEW PORTLAND

- **Nowetah's American Indian Museum and Craft Shop**, 628-4981, www.nowetahs.webs.com/, daily 10 am-5 pm, free,



THAYER ENGINEERING CO.
Land Surveyors
Civil Engineers
Planners

Elliot B. Thayer, PLS, PE
Andrew Dunbar, PLS, LPF, LSE

RESIDENTIAL & COMMERCIAL
SITE DESIGN
STATE & LOCAL
PERMIT APPLICATIONS
PREPARED & PRESENTED

17 Hasson Street
Farmingdale, ME 04344
582-7762
www.thayereng.com



MOSQUITO BANDITOS
207-613-5656

Protect your children and pets from:
Zika, West Nile Virus, Encephalitis, Heart Worms
Anaplasmosis, Lyme Disease, PowassanVirus

ENVIRO FRIENDLY TICK, BLACK FLY & MOSQUITO CONTROL
www.mosquitobanditos-maine.com



GENERATORS of MAINE INC.

SALES • SERVICE • INSTALLATION
www.generatorsofmaine.com 207-495-2285

KOHLER
IN POWER. SINCE 1920.

Platinum Dealer



628-4981, 2 Colegrove Road, Route 27

- **Wire Bridge**, 1864, probably only wire suspension bridge in U.S., off Route 27

NEW SHARON

- **Farmers' Market**, Saturday 9 am-1 pm, Douin's Market, 491-9025, 150 Mercer Road, Routes 2/27
- **New Sharon Historical Society**, Saturday 1-3, 778-4167, Routes 2/27

NORRIDGEWOCK

- **Norridgewock Historical Society Museum**, 1838 building, Saturday 10 am-1 pm, 634-5032, www.norridgewockmuseum.com, Mercer Road, Route 2
- **Oosoola Park**, picnic area, great playground, boat launch, on Kennebec River, Route 8

OAKLAND

- **Macartney House Museum, Oakland Area Historical Society**, 465-7549, Wednesday 1:30-4:30 pm, 1815 home with antique furnishings and Oakland artifacts, 25 Main Street
- **Town Parks**, playground, picnic tables, swimming area, boat launch area, Belgrade Road on Lake Messalonskee and McGrath Pond Road on McGrath Lake
- **Farmer's Market**, Friday 2-6 pm, 465-3094, Pine Acres Parking Lot, 895 Kennedy Memorial Drive

READFIELD

- **Readfield Historical Society and Museum** in 1853 school-house, 685-4662, www.readfieldhistorical.org, Thursday and Saturday 10 am-2 pm or by appointment, Route 17, Readfield Depot

ROME

- **Mt. Philip Grange**, suppers 3rd Sat of month, 4:30-6 pm, all you can eat beans, cornbread, rolls, chop suey, pies, Routes 135/225
- **Trails**: Mount Philip, Route 225; The Mountain, Route 27; French's Mountain and Kennebec Highlands, Watson Pond Road; for information call 495-6039 or visit www.belgradelakes.org; maps available at BRCA, 137 Main Street, Belgrade Lakes

SIDNEY

- **New England Music Camp**, concerts free and open to the public, Bowl-in-the-Pines on Lake Messalonskee, 465-3025, www.nemusiccamp.com, 8 Goldenrod Lane, Route 23
- **Sidney Historical Society**, 724-8032, www.sidneyhistoricalso-ciety.org, 2986 Middle Road
- **Silver Spur Riding Club**, horse shows, River Road, Route 104

SKOWHEGAN

- **Margaret Chase Smith Library**, residence, home, museum exhibits, 474-7133, www.mcslibrary.org, free, Monday-Friday, 10 am-4 pm, 54 Norridgewock Ave.
- **History House Museum**, 1800s local history and culture, heirloom gardens, free, Tuesday-Saturday, 10 am-4 pm, 474-6632, www.skowheganhistoryhouse.org, 66 Elm Street
- **Fairgrounds**, weekly horse shows/competitions, free public events, covered arena, Skowhegan State Fair in August, 474-3621, Madison Avenue, Route 201
- **Farmers' Market**, Wednesday 3-6 pm, Saturday 9 am-1 pm,

weekly entertainment, 938-3906, Somerset Gristmill parking lot, downtown

SMITHFIELD

- **Fairview Grange**, 362-2791, Route 8
- **Smithfield History Society "The Groves House,"** 634-4392, 21 Lakeview Drive
- **Sunbeam Roller Rink**, 362-4951, 830 Village Rd, Route 8
- **Sunset Camps**, public beach, 362-2611, www.sunsetcamps.com, 834 Village Road, Route 8

UNITY

- **Unity College Centre for the Performing Arts**, folk genre music, 568-3147, www.unitymaine.org, 42 Depot Street

WATERVILLE

- **Aqua City Actor's Theatre (ACAT)**, 873-7000, www.acattheatre.org. Waterville Opera House Studio Theater, Main Street
- **Museum in the Streets**, downtown history/walking tour, www.themuseuminthestreets.com/waterville.htm
- **Head of Falls Park/Two Cent Bridge**, historic foot bridge over Kennebec River connecting Waterville and Winslow, Front Street
- **Common Street Arts**, 872-2787, www.commonstreetarts.org, Wednesday-Friday 12-5 pm, Saturday 11 am-1 pm, 93 Main Street
- **Colby College Museum of Art**, 859-5600, www.colby.edu/museum/ Tuesday-Saturday 10 am-5 pm, Sunday 12-5 pm, free admission, Colby College Campus, Mayflower Hill
- **Colby College Special Collections**, Miller Library, Monday-Friday 10 am-12 noon and 1-4 pm, free admission
- **Thomas College Art Gallery**, 180 West River Road
- **Waterville Historical Society and Redington Museum**, 1814 home and pharmacy, 872-9439, www.redingtonmuseum.org. Tuesday-Saturday tours at 10 and 11 am, 1 and 2 pm, 62 Silver Street
- **Waterville Opera House**, 873-7000, www.operahouse.com, 93 Main Street
- **Farmers' Market**, Thursday 2-6 pm, 680-2055, www.watervillefarmersmarket.org,

WAYNE

- **Farmers' Market**, 685-4657, <http://waynefarmersmarket.weebly.com>, Saturday 9 am-noon, Town Green, at the Mill Pond, Main Street

WILTON

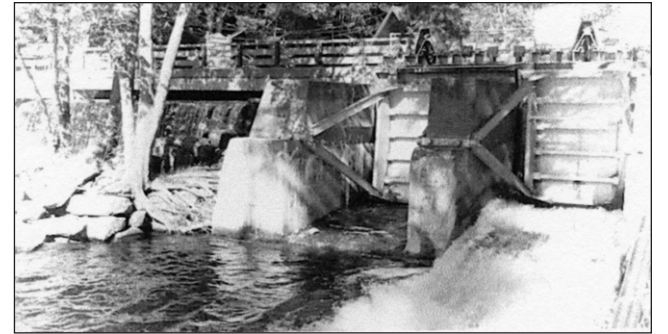
- **Wilton Farm & Home Museum**, 645-2091, 645-4578, www.thewiltonfarmandhomemuseum.org, Saturday 1-4 pm or by appointment, 10 Canal Street

WINSLOW

- **Fort Halifax on the Kennebec River**, historic fort tower, park, Route 201

WINTHROP

- **Norcross Park**, playground, picnic site, boat launch on Maranacook Lake
- **Farmers' Market**, 446-2899, Tuesday and Saturday 9 am-1 pm, town office parking lot, 17 Highland Avenue



The Dams Keeper Report

We're starting the unofficial beginning of Summer with our pond water levels slightly below where we would like to be. As of this writing, the Village spillway dam is 5.36" below full pond with Long Pond right at full with all gates at both dams opened just 2" or so for a slight flow. Last year at this time, both Great Pond and Long Ponds were above full, 2.7" and 3.7" respectfully. As with last summer, we were trying to have all of our ponds 'artificially' 3" above full because of the dryer than normal forecast. Although we were not able to get to the +3" Memorial Day benchmark due to the lack of rain, we are not shelving our objectives quite yet!

As I am writing this, we have missed the last 4 rain events (all have gone south of us) but the 10 day forecast now predicts a meager.63" of precipitation which is welcomed. The long term forecast for this summer is about the same as the past two summers with an average 24% less precipitation than normal: <http://longrangeweather.com/weather-forecasts/US-City.aspx>

Although this Chamber of Commerce weather is great for boating and water clarity, the lack of precipitation is proving detrimental to our water levels as well as our gardens!

And remember, with 85°F air temperatures, we lose ¾" per day just to evaporation, so we do need some rain – maybe just in the evenings and preferably not a real washout!

Enjoy your summer here in the beautiful Belgrades. And don't forget to pray for some rain!

Dick

Dick Greenan

Secretary, Belgrade Lakes Watershed Dams Committee

...Continued from page 3

Once the asset inventory analysis has been completed and public input has been collected, OCPC will craft a Comprehensive Plan that is easily-readable and usable. Comprehensive Plans are commonly used to promote quality of life, prosperity, and dialogue between neighbors, and to gain an advantage when applying to state and federal funding opportunities.

Information regarding methods by which the residents and businesses of the Town of Oakland can voice their opinions on the future of the community may also be accessed via OCPC's Comprehensive Planning website: <http://www.centralmaine.org/oakland-comprehensive-plan/>.

J & M Logging, Inc.
622-6353
 Cut to order
 in lengths from 14" to 23"
Firewood
 Green Certified Wood, Seasoned, & Ash
 Cut, Split & Delivered
 853 Civic Center Drive, Augusta, ME 04330

Changes?
 Updates?
 New contact information?
 Please let us know...
mo.breault@gmail.com
 or ebelnews@earthlink.net

BELGRADE BOAT STORAGE
DARE TO COMPARE
 Best Prices on Inside,
 Outside Boat Storage,
 Shrinkwrapping &
 Winterization
 Craig Pooler
 Cell: 207-314-3287 • Office: 207-495-3421
 Email: belgradeboatstorage1@yahoo.com
www.BelgradeBoatStorage.com



— Calendar —

Thursday 6/21 – Belgrade Historical Society Annual Meeting, “A Brief History of the Use of Outboard Motors on the Belgrade Chain of Lakes,” by Rod Johnson, 7 pm, Maine Lakes Resource Center, Main Street, Belgrade Lakes.

Thursday 6/21 - Active Shooter Training, sponsored by Belgrade Recreation Department, 6-9 pm, 495-3481, Belgrade Community Center for all Seasons, Route 27, Belgrade Lakes.

Friday 6/22 – KVCAP's 4th Annual Golf Tournament & Silent Auction “Tee Off for Transportation,” all proceeds support the Explorer public bus system, 9 am, 859-1630, Lakewood Golf Course, Route 201, Madison.

Friday 6/22 – Dogs For Paws Barbecue, to support the Kennebec Valley Humane Society & Somerset Humane Society, 9:30 am-2 pm, Maine State Credit Union, 200 Capitol Street, Augusta and 81 Grove Street, Waterville.

Friday 6/22 - “Maine Woods: Finding the Right Balance,” with Kevin Doran, Natural Science Educator, Maine Forest Service, lecture 10:30 am, Nature Walk 1:30 pm, free, lunch available for \$10, 293-2280, Bearnstow on Parker Pond, Mount Vernon.

Friday 6/22 – Hot Fiddle!, violinist Ashley Liberty and pianist Daniel Strange, free performances, 2 and 7 pm, 946-5311, Araxine Wilkins Sawyer Memorial, 371 Sawyer Road, Greene.

Friday 6/22 – Skosh, four-piece funk/classic rock/blues band, kick off

for Johnson Hall Free Waterfront Concert Series, 7-8:30 pm, fireworks to follow, www.johnsonhall.org, Waterfront Park, Gardiner.

Thursday 6/21 through Sunday 6/24 – “Little Shop of Horrors,” 474-7176, Lakewood Theater, Route 201, Madison.

Friday 6/22 through Sunday 6/24 – “Witness for the Prosecution,” by Agatha Christie, 7:30 pm Friday and Saturday, 2 pm Sunday, 626-3698, Gaslight Theater, Winthrop Street, City Hall, Hallowell.

Friday 6/22 – A Midsummer Night's Dream Masquerade Ball, to benefit the Augusta Downtown Alliance, 623-8211, Club Calumet, 334 West River Road, Augusta.

Saturday 6/23 and Sunday 6/24 - 3rd Annual New England Vintage Base Ball Festival, played by the rules of the 1860s, nine teams, 9:30 am Saturday, 8 am Sunday, admission free, food and ice cream concessions, shade tent, 625-3095 or 625-3281, Cornish Fairgrounds, Cornish.

Saturday 6/23 – Greater Gardiner River Festival, booths, food, music, children's activities, fun family outing, 9 am-10 pm, www.gardinermainstreet.org, on historic Water Street and beautiful Waterfront Park on the Kennebec River, Gardiner.

Saturday 6/23 - NEPHC Showdown in Skowtown APHA/All Breed Horse Show, covered arena, concessions, free to the public, 446-9910, Skowhegan Fairgrounds, Madison Avenue/Route 201, Skowhegan.

Saturday 6/23 and Sunday 6/24 - Annual Antique Tractor Festival, pulls, demos,

food, kids activities, 8 am, 431-2718, 351 Waterville Road, Norridgewock.

Saturday 6/23 – 48th Annual Maine Lakes Conference, speakers, workshops, networking, lunch, 1-855-463-2652.

Saturday 6/23 - 7th Annual Farm & Homestead Day, free admission for all, 568-4142, Maine Organic Farmers and Gardeners Association, Unity.

Saturday 6/23 – Petanque Tournament, 9 am, Mill Park, Water Street, Augusta.

Saturday 6/23 – Strawberry Festival, artisan show, tours of historic barn, home, schoolhouse, \$10 adults, \$6 ages 12 and under, fee charged for shortcake, 11 am-4 pm, Norlands Living History Center, Livermore.

Saturday 6/23 – Camp Mechuwana's 3rd Annual Golf Tournament, to support the scholarship program, rain or shine, 1 pm shotgun start, Springbrook Golf Course, Leeds.

Saturday 6/23 – Public supper, potluck, 5:30 pm, adults \$6, under 12 \$3, Smithfield Baptist Church, Route 137, Smithfield.

Saturday 6/23 – “Romeo and Juliet,” performed by the Recycled Shakespeare Company, a unique adaptation of Shakespeare's famous lovers, bring a chair or blanket, refreshments will be available, 7 pm, 314-8607, Castonquay Square, Main Street, Waterville.

Saturday 6/23 – Porch Party Mamas, urban folk, country and blues, 293-2674 or 293-2362, 7 pm, Vienna Union Hall, off Route 41, Vienna.

Saturday 6/23 – Simons and Goodwin, guitar/soloist duo, 7 pm, 778-2006, Farmington North Church, 118 High Street, Farmington.

Saturday 6/23 – “Pride@Prejudice,” opening night, 933-9999, Cumston Hall, The Theater at Monmouth.

Sunday 6/24 – First Annual Snow Pond Jazz Brunch, featuring faculty and students from the 21st Century Band Jazz Institute, includes of quiche, fresh fruit, homemade granola, maple mimosas and more, doors open 9:45 am, music 10:30 am-1 pm, 1-844-476-6976, ext. 1, Snow Pond Center for Arts, Pond Road, Route 23, Sidney.

Sunday 6/24 - Local Cheese, Bread and Beer celebration, demonstrations, noon to 4 pm, 612-2571, 474-3621, Bigelow Brewing Company, Skowhegan.

Sunday 6/24 - “Romeo and Juliet,” performed by the Recycled Shakespeare Company, a unique adaptation of Shakespeare's famous lovers, bring a chair or blanket, refreshments will be available, 2 pm, Coburn Park, Water Street, Skowhegan.

Monday 6/25 – Naturalists Arts Camp through 6/29, create art inspired by the natural world, 9 am-2 pm, 238-4250, L.C. Bates Museum, Route 201, Hinckley.

Tuesday 6/26 - “Fly Rod Crosby: the Woman Who Marketed Maine,” book discussion at the Maine State Museum, 5:30 pm, 237-2801, State Street, Augusta.

Tuesday 6/26 – Grief Support Walking Group for adults, designed to enjoy nature, share, listen, connect, 6 pm, pre-

MAINE-ly ELDER CARE

“Caring for the ones who cared for us”



In - Home Nursing • Personal Care Services • Homemakers
• Emergency Response Systems • Transportation Services

STATE REGISTERED PERSONAL CARE
AND HOME MAKER AGENCY

465-3249

28 Center St., Oakland, Me 04963

www.Maine-lyElderCare.com

denise@Maine-lyElderCare.com

Expanded in 2014 to Better Serve Our Customers



**Belgrade Lakes
Marine & Storage, Inc.**

Winter Storage for Summer Vehicles

Secure newer storage facilities accommodate boats on trailers, autos, and the largest RVs in 3 buildings totaling over 21,000 sq. ft. Electrical charging outlets are available. Reasonable rates for real protection from extreme winter storms and sun damage.

207-495-2378 • www.belgradelakesmarine.com

366 Augusta Road, Route 27, Belgrade, ME



registration required at 873-3615, ext. 19, Quarry Road Trails, off North Avenue, Waterville.

Tuesday 6/26 – The Great Race (Buffalo to Halifax), the world's premier classic car rally stops over in Gardiner, antique, vintage and collector cars from 1972 and older, food trucks – 2-9 pm, Classic Car Cruise-In – 3 pm, Great Race cars arrive – 5-7 pm, live music, fireworks – 9 pm, sponsored by Main Street Gardiner, 5-9 pm, 582-4460, downtown Gardiner.

Tuesday 6/26 – Skowhegan Free Movie Night Summer Kick Off, bring a picnic, kids, snacks, free water and popcorn available, 6-9 pm, Coburn Park, Water Street, Skowhegan.

Tuesday 6/26 – Alter Igor, riverfront concert, 7-8:30 pm, Water Street, Hallowell.

Wednesday 6/27 - 5th Annual Terrier Tee-Off Classic, to support student-athletes and teams of the Thomas College Athletic Program, 11 am registration, noon shotgun start, 859-1206, Waterville Country Club, Kennedy Memorial Drive, Oakland.

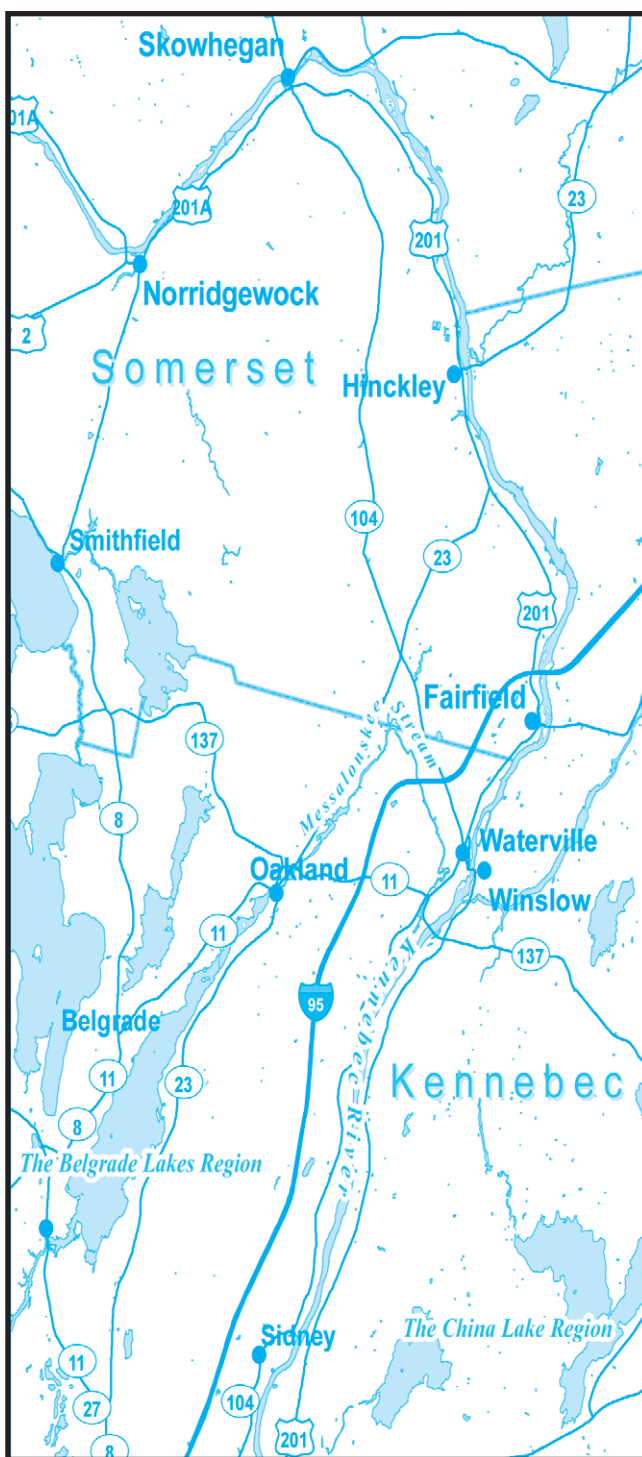
Wednesday 6/27 – Audubon Forestry for Maine Birds Workshop, managing woodlands and riparian habitat for healthy fish and connected streams, inside presentation followed by a visit to a wooded site, free but registration is required, rain date 6/26, 781-2330 ext 219 or email amcquirk@maineaudubon.org, 4 pm, Maine Lakes Resource Center, Main Street, Belgrade Lakes.

Wednesday 6/27 - Grange Turkey Supper, 5 pm, Fairview Grange, Route 8, Smithfield.

Wednesday 6/27 – Rob Burnell Band, Waterfront Wednesday Concert, sponsored by the City of Augusta Recreation Bureau, free, 6 pm-sunset, Waterfront Park, on the Kennebec, Augusta.

Wednesday 6/27 – DIY Fermentation: Sauerkraut, Kombucha & Vinegar, 6:30 pm, 626-2415, Lithgow Library, State Street, Augusta.

Kennebec Corridor



Wednesday 6/27 – Saturday 6/30 - "Little Shop of Horrors," 474-7176, Lakewood Theatre, Route 201, 76 Theatre Road, Madison.

Thursday 6/28 – Music in Oakland Waterfront Park, 6-9 pm, Lake Messalonskee, Old Belgrade Road, Oakland.



Greater Gardiner Riverfest June 23

From early morning breakfast to live music late in the night, on Saturday, June 23, Greater Gardiner will offer activities, entertainment, fun, food, demos, music, a book sale and boat rides in historic downtown Gardiner and in Waterfront Park on the Kennebec River. Highlights include:

- Breakfast, lunch and all-day-long food specials at vendor booths, downtown eateries and local organizations.
- The 17th Annual Gardiner Arts & Crafts Festival.

- Children's Activities from face painting to story walks to balloon animals.
 - Gardiner Public Library Book Sale.
 - Live entertainment at Johnson Hall and on the waterfront.
 - Free boat rides with Friends of the Cobbossee Watershed.
 - Gardiner's Annual Talent Show.
 - Fireworks.
- A complete schedule is available at www.gardinermainstreet.org or look for brochures at local businesses or call 623-4559.



QUALITY ANTIQUES
New Merchandise Arriving Daily!

Always Accepting Dealer Applications
Quality Antique Dealers Apply!
Contact- Deborah Stufflebeam
Manager- FMI:
207-522-1977

10,000 Sq. Ft. Multi Dealer Emporium offering Quality Antiques to Mid-Century Modern Treasures.

Air Conditioned • Ample Parking
Open Daily 10:00 a.m. - 5:00 p.m.

In the iconic former Hathaway Shirt Factory

10 Water Street
Waterville, ME
207-877-0250

HATHAWAY MILL ANTIQUES

www.hathawaymillantiques.com
e-mail: info@hathawaymillantiques.com

NEW MAINE TOURMALINE JEWELRY.

L. TARDIF JEWELER
62 Main Street
Waterville, Me.

Tues - Sat
9 - 5

est. 1935

207-872-7542

LakeHouse™ Renovations

Design • Build • Renovate

Traditional Style Camps,
Cottages and Lakefront Homes
207.242.3663
www.lakehousedesignbuild.com

ACME LAND SURVEYING, LLC

Professional Land Surveyors – Professional Foresters
Property Surveys, Subdivisions, Topographic Surveys, MLIs,
Elevation Certificates/LOMAs, ALTA/ACS Surveys,
Deed Research, Wetland Delineation, Forest Management

108 Fairbanks Rd., Suite 5
Farmington, ME 04938
Website: www.acmelandsurveying.com

Tel. (207) 778-4081
Toll Free (800) 778-4081
Email: info@acmelandsurveying.com

DAY'S REAL ESTATE

"The Waterfront Specialists"

262 Augusta Road, PO Box 284
Belgrade Lakes, Maine 04918
207-495-3111

www.daysrealestate.com
daysrealestate@roadrunner.com



207-474-2420

Design - Install - Maintain

Designing landscapes to beautify your property and protect our natural resources - Installing these landscapes in a manner that promotes sustainability and prevents erosion - Maintaining these landscape so your investment lasts a life time



Licensed, Certified & Accredited
For All Of Your Landscaping Needs



www.lynchlandscaping.com



Belgrade Vacation Rentals

LAKEFRONT RENTALS

Contact Us Today! (800) 760-1503
www.BelgradeVacationRentals.com


Own A Property? We Will Rent it for You!




Showing the Best of World and American Cinema

17 Railroad Square, Waterville, Maine, 04901
24-hour movie info:
207-873-6526
www.railroadsquarecinema.com

Home of the
Maine International
Film Festival
(July 13 - 22, 2018)
www.MIFF.org



free and open to the public



Colby College Museum of Art
Waterville, Maine
colby.edu/museum
207.859.5600



ST. MICHAEL SCHOOL

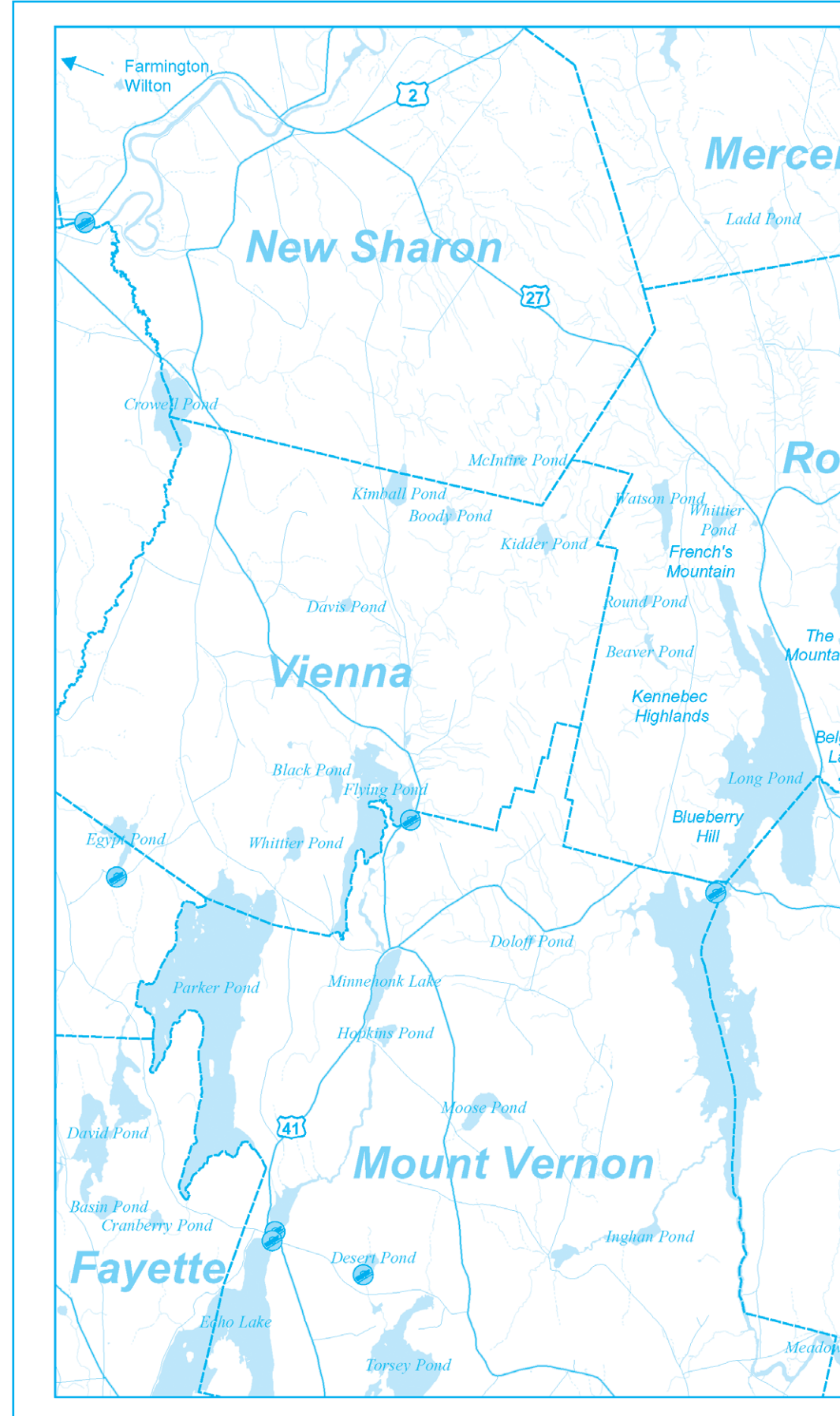
56 Sewall Street, Augusta, ME 04330
207.623.3491 www.smsmaine.org

**NEW Fall 2016...
PRE-K for 3 year-olds!**

St. Michael School will be opening a new Pre-School Program for 3 year-old children starting in the fall. This Program will have a curriculum, daily schedule and an overall program that is consistent with the mission and values that have been associated with a St. Michael School education. Register your child TODAY!



A Legacy of Excellence,
a Foundation for the Future.



EYE CARE OF MAINE

"Your Sight is Our Vision"

- Comprehensive Eye Exams
- Eyewear Center / Contact Lenses
- State of the Art Cataract Surgery
- Retinal Diseases and Glaucoma
- LASIK Refractive Surgery
- Laser Surgery
- Oculoplastic Diseases
- Botox, Juvederm and Latisse

• Ambulatory Surgery Center

www.Maine2020.com

 Steve R. Witkin, M.D.	 Peter C. Kohler, M.D.	 James R. Putnam, M.D.
 Marc B. Daniels, M.D.	 Helen Bell-Necevski, O.D.	
 Lorie Lepley Parks, O.D.	 Michael C. Parks, O.D.	 Ian M. Jones, O.D.

325A Kennedy Memorial Drive
Waterville, Maine 04901

873-2731
(800) 660-3403

RIVERSIDE FARM

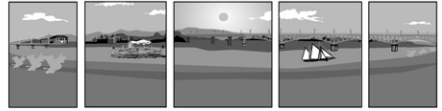
RESTAURANT & WINE MARKET

Restaurant Hours:
Brunch
Sundays - 10am-2pm
Lunch
Thursdays - Saturdays - 11am-2pm
Dinner
Thursdays - Saturdays - 5:30pm-8:30pm

Wine Market Hours:
Tuesdays - Fridays - 10am-5pm
Saturday - 10am-2pm

291 Fairfield Street
Oakland, ME 04963
For reservations call 207-465-4439

RiversideFarmMarket.com



RIVERFRONT BARBEQUE & GRILLE

WORLD CLASS BARBEQUE

SEAFOOD, PASTA, & VEGETARIAN ENTREES

207.622.8899

300 WATER STREET, AUGUSTA, MAINE

WWW.RIVERFRONTBBQ.COM

FULL SERVICE DINING ≠ CATERING ≠ BULK TAKE OUT



Augusta's finest upscale lounge featuring fine wine, martinis, and over 100 brands of beer from Germany to Japan

Thursday thru Saturday 3:00pm until Midnight,
Above the Riverfront Barbeque & Grille
at 300 Water Street
207.620.9200

Lakepoint REAL ESTATE

(207) 495-3700
221 Main Street, Belgrade Lakes

"Put The Team to Work For You"
GAIL RIZZO 207-242-8119
gail@gailrizzo.com
PAT DONAHUE 207-730-2331
pldcamp@msn.com



Western facing Long Pond four bedrooms, two bath classic log cottage featuring cathedral ceilings with ample light, retro kitchen, office, dining area, living room with field stone fireplace, glassed-in porch, deck at water's edge, two docks, two car garage, outbuildings for storage, 400' of waterfrontage and 2.50 acres expansive views!
MLS#: 1355032 \$679,000



Stunning Great Pond 4 bedroom, 2.5 bath, year-round home with spacious kitchen, dining area, living room w/fireplace, office area, expandable 24'X26' room on second floor and large deck! This level, well landscaped property boasts 150 +/- of private waterfrontage with a sandy beach - sunsets are simply breathtaking from this location!
MLS#: 1353732 \$585,000

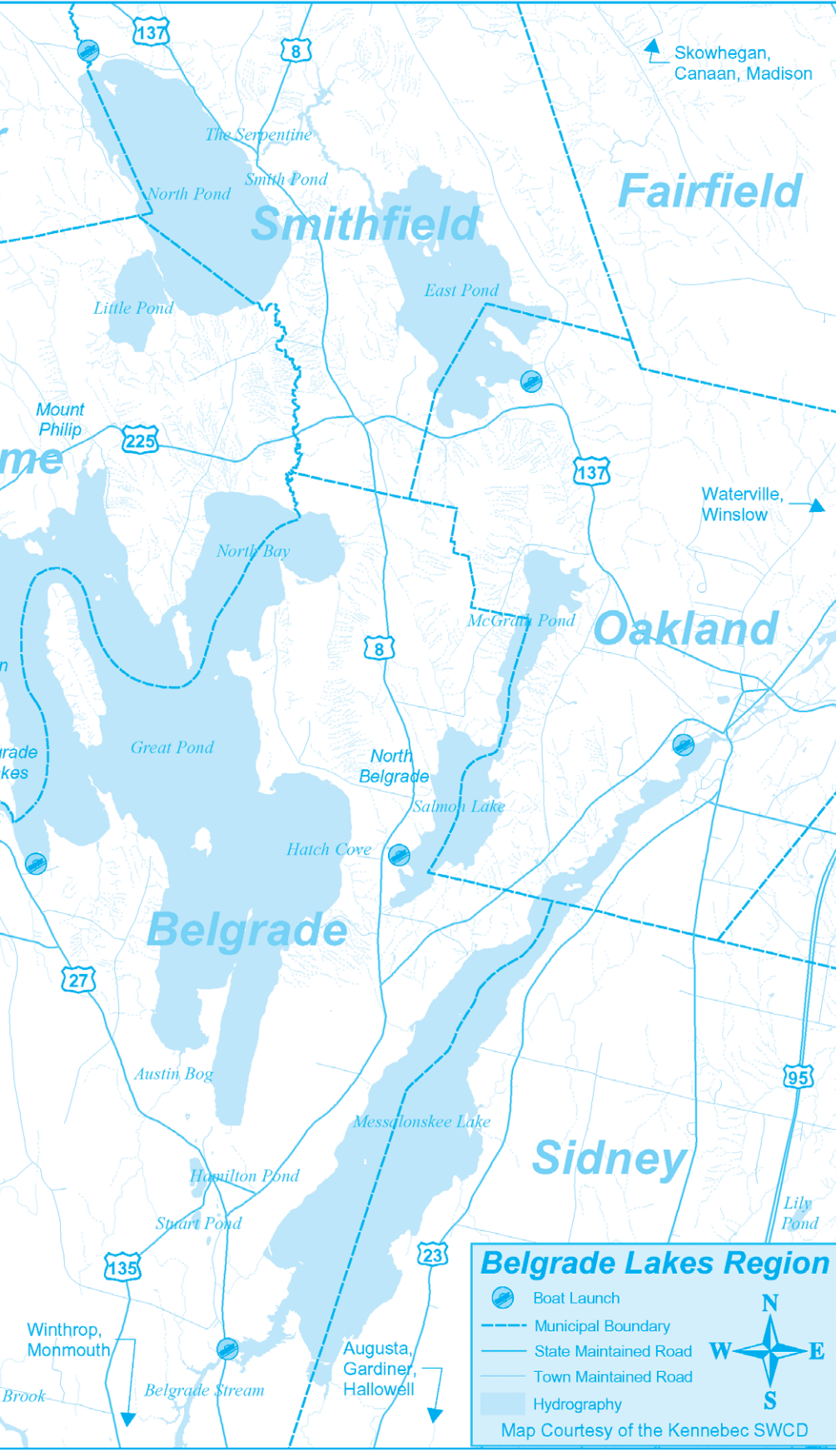


Messalonskee Lake Custom built log home featuring 3 bedrooms, three baths, plus a master suite with walk-in closet, bonus room, private deck overlooking waterfront, great room w/stone fireplace, dining area, kitchen with granite counters, custom cabinets with high end appliances all with views of Messalonskee Lake, exercise room, office, two car garage, wrap around decks, 250' +/- waterfront and 1.67 acres.
MLS#: 1348788 \$729,000



A must see, this custom built chalet-style home featuring four bedrooms, five bathrooms. Located on 43 acres atop westerly facing ridge overlooking two lakes with frequent breathtaking sunsets. Prominent view of Sugarloaf Mountain, Mount Blue, and Bigelow range. Hand-crafted cherry and maple cabinets with granite counter tops, living room with picture windows, vaulted ceiling truss work, and large stone masonry fireplace. Large deck for grilling and family gatherings with spectacular panoramic views. Three-car garage with large storage room above. Fully automatic, back-up generator. Nearly 2 miles of hiking trails leading from house throughout 40+ acres.
MLS#: 1354088 \$769,000

www.belgradelakepoint.com



Visit the Businesses on Marina Drive

GREAT POND MARINA

Old Town Fishing Kayaks



25 Marina Drive | Belgrade Lakes, ME
(207) 495-2213 | www.greatpondmarina.com
— TEST PADDLE BEFORE YOU BUY! —

Lakeside Cottage Rentals



Exclusive Lakeside Rentals in the Belgrade Lakes Region

Located at 25 Marina Dr.
(207) 495-4046
www.LCRentals.com

Waterfront Property Owners

We offer full service rental management services. Please call if you are interested in having us manage your home.

sadiesboathouse@hotmail.com

• 207-495-4045 •

Like us on Facebook!
Open Friday & Saturday
from 5 PM - 9 PM



Clark Marine

57 PUDDLEDOK ROAD, MANCHESTER, MAINE
207-622-7011 | CLARKMARINEMAINE.COM

GLASTON



Bryant



Avalon



CRESTLINER



The one stop shop for your fresh water boating needs!

G & L CONTRACTING

- New Construction
- Additions
- Dock Installations
- Jacking

207-495-9009

www.gandlcontractingmaine.com



Lift Services
Serving: Great and Long Pond, Messalonskee, and Cobscook



— Upcoming —

JUNE

• The 19th Annual Black Fly Follies, the Theater at Monmouth's annual variety show featuring the musical and comedic talents of the TAM summer company will be held on Saturday, June 30 at 7:30 pm at the Theater at Monmouth. 933-9999

JULY

• The Friends of the Cobbossee Watershed will hold the 16th Annual Friends on the 4th 5K - run, jog or walk, starting at Norcross Point in Winthrop at 8 am. 621-4100

• The Maine International Film Festival, featuring 50 filmmakers and over 100 films, will be held on July 13-22 in Waterville. www.Miff.org 861-8138

• The Mt. Philip Grange July Monthly Bean Supper will be Saturday, July 21, 4:30-6 pm, Route 25, Rome.

• The Annual 5K Road Race to benefit the Belgrade Public Library will be on Saturday, July 14, at 8 am at the Belgrade Central School. 465-3524

• The 5th Annual Public Drive Thru Chicken Barbecue at the Unity United Methodist Church, corner of Main and Depot Streets, will be held on Saturday, July 14, 11:30 am til gone. The \$9 diner includes ½ chicken, potato salad, coleslaw, dinner roll, dessert and beverage. 948-2455

• Colby College Museum of Art Community Day will be held on Sunday, July 15, noon to 2 pm, open to the public free to enjoy refreshments, art making for all ages, games, docent-led tours and live music by Gent Treadly. 859-5600

• On Sunday, July 15, Winterberry Farm in Belgrade will hold its 7th annual farm to table dinner starting at 5 pm. 649-3331

• "Klu Klux Klan in Maine" will be presented by author Mark Alan Leslie on Wednesday, July 25, 6-8 pm, at the Belgrade Public Library on Depot Street. 495-3508

• The 10th Annual University of Maine at Augusta Athletic Golf Tournament to benefit the sports program will be held on Thursday, July 26 at the Augusta Golf Course. 621-3512

• The annual conference of the Lake Stewards of Maine (formerly Volunteer Lake Monitors) and silent auction will be held on Saturday, July 28 at The Great Outdoors in Turner. 783-7733

AUGUST

• "The North Pond Hermit" will be the topic of a discussion on Wednesday, August 1 at the Belgrade Public Library, 6-8 pm. 495-3508

• On Sunday, August 5, 9 am-3 pm, the Belgrade Lakeside Artisan Show will be held at the Belgrade Community Center for All Seasons. 495-3481

• The Taste of Greater Waterville, sponsored by the Mid-Maine Chamber of Commerce, will be held on Wednesday, August 8 in downtown Waterville. 873-3315

• The 199th Skowhegan State Fair runs from August 9-18. www.skowheganstatefair.com

• "Mystery at the Museum - Resurrecting Rachel (Coburn) Parker," presented by Trustee Kay Marsh, will be presented on Friday, August 10, 7 pm, at the Skowhegan History House Museum. Free to the public, refreshments offered. 474-6632

• The August Blistered Fingers Family Bluegrass Music Festival with 12 outstanding bands will take place August 22-26 at the Litchfield Fairgrounds. 873-6539

• Maine author Monica Woods will be at the Belgrade Public Library on Wednesday, August 22, 6-8 pm, to talk about her book, "After Failure." 495-3508

SEPTEMBER

• The 4th Annual Skowhegan Craft Brew Festival with local food, live bands, guided tours of the Somerset Grist Mill and visits to the riverfront and the Langlais Art Trail will be held Saturday, September 1 in downtown Skowhegan. SkowheganCraftBrewFest.com



...Luckiest Boy continued from page 4

While Doris held the quickly draining cell phone flashlight, I opened the motor hatch and did a quick overview. Coil wire in, no noted items unhooked. At this time, it became apparent that a fog was settling over us. With the engine problem and the weather quickly becoming socked in, things were going to hell in a handbasket. With little flashlight battery left, I asked Doris to hold it close to the distributor. We popped off the cap to inspect the points. Without a decent flat bladed screw driver, the Leatherman had to do. At that time, we heard what sounded like an old violin or fiddle—and some muted voices from somewhere in the now heavy fog. Could this be a dream or did we drink some psychedelic wine? What in the devil is going on? In fifteen minutes or so, the south wind had moved us a quarter mile or so, and a loud CLUNK sounded. We had drifted over the white ledges and our skeg had hit aground. Wow, the plot thickened. No motor, no steerage, thin water and very little flashlight left. Of all things, old men's raspy voices now semi-clear and very close, are added to the list above. The next thing we knew the Lyman had drifted adjacent to a long double-ended guideboat, with no one aboard. An old hemp anchor line led over the bow and under the water holding the craft, and an old oil lantern was hanging on a hand hammered shepherds hook stuck in the biggest rock out there. I had been told as a child that the guides had drilled a hole in the big rock and set a lantern aglow each night to warn night boaters of the ledges. The old boys were at it again and we were about to finally witness one of their parties. Before we could completely digest the events that had overcome us, a quick updraft of breeze came over the area. In a

matter of minutes, the strange weather was leaving us as fast as it overtook us. Soon I saw the dull tiny green light on Glenn Baxter's point, and knew that the party was over. We may have scared them off and ruined the gathering. We were alone with no Guide Ghosts, and a quickly clearing sky with thousands of stars appearing. By now we had drifted north of the ledges into some deeper water. With the last remaining flashlight power for light, we rolled over the crankshaft of the big V/6 with a knucklebuster wrench on the damper pulley bolt head. Sure enough, the points had closed up as the set screw had loosened. We opened the points and set them to a match book cover thickness, then tightened the set screw and put the cap back on. (this was an old trick that Fred Saxton (alias Bucko) had passed along some 50 years ago while working on Pukin Betsy, our fun old '26 Chevy) Doris hit the starter switch and BINGO, the old girl fired up. None too soon as the flashlight went completely dead at that moment. We both chuckled, punched her up on a plane and headed to the Mill Stream. Just another day on the lake? We'd sooner think there's no doubt about it: The Guide Ghosts of Great Pond had once again, been caught red-handed!



Berry's Stationers

Art & Office Supplies

SEE US AT OUR NEW LOCATION!

New Showroom & Custom Framing Department
Convenient Parking

Art Supplies • Puzzles
Cards • Unique Projects
Coloring Books
Gift Certificates Available

835-B Kennedy Memorial Drive, Oakland, ME • Next to H&R Block
(207) 716-1076 • Open Monday-Friday 9AM-5PM & Saturday 9AM-3PM

Since 1897

Creative solutions for all your Mac needs

Macintosh and iOS support, based in Western Maine, working onsite throughout Maine

If you have Macs, iOS devices, software or network problems, websites you'd like built, or any ideas you would like to implement using Macintosh computers, give me a call and we can discuss if I can help...

207-578-0226 • www.michaelbreault.net



– Conservation Too –

More about Invasive Plants – How Invasive Plants Get Managed on a Farm

Guest author Luis Aponte, NRCS staff

A farm in Litchfield manages a dairy business with 88 head of cows. They are very focused and responsible farmers, and keeping their lands productive is on the top of their list of priorities (like most dairy farmers). Just like so many landowners in Maine right now, they have had a problem that, if left unmanaged, can take over lands and prevent them from being productive or manageable: invasive species. The invasive plants that have been pestering their farm for years are Multiflora Rose (*Rosa multiflora*), Japanese Honeysuckle (*Lonicera japonica*) and Japanese Barberry (*Berberis thunbergii*). Populations were growing on the field borders and even some spreading into the middle of the field. As they kept the fight going with different techniques, they decided to apply for USDA assistance and were granted dollars to control their invasive plant population through chemical control, under the practice “Brush Management”.

In 2017 they decided to acquire a 200 gallon tank sprayer with 300 feet hose capacity which he mounts to his tractor to reach far into areas that may not otherwise be accessible. With this instrument and some technical assistance by NRCS planners, he tackled his invasive plants head on. For chemical control he used two herbicides. The first one was a generic brand of Glyphosate. The other was 2-4 D. He followed the label instructions. For the multiflora rose and Japanese honeysuckle, glyphosate was a very effective control method, but in the case of Japanese barberry, glyphosate was ineffective. So he decided to buy 2-4 D and apply as the label mandated. He found that chemical to be very effective with barberry, as the effects could be seen rapidly. As he has dealt with invasives for years, he has learned to find which chemicals are more effective for certain plants.



200 Gallon tank used to spray.



Japanese Honeysuckle after being sprayed with Glyphosate

As the population of invasive plants grows in Maine, landowners have become very aware that this is a state-wide concern. You can hear about different techniques producers are utilizing, from bush hogging the fields, to pulling invasives with different types of homemade instruments. This farmer schedules two full weeks to tackle invasives every year,

and spends about \$10-\$15 an acre depending on the density of the plant population. Cost estimates from certified applicators were in the range of \$50-\$250 an acre. NRCS Brush Management helps pay for part of the practice i.e. herbicide, some of the labor and helped offset the cost of spraying equipment. The producer addressed 3 acres of invasive species under the program. They continue to control invasives on their own on an annual basis. The real issue is taking the time to be able to do that. They acknowledged that it is unreal to think that you can eradicate the species in your property, but keeping them controlled and away from the pasture and cropland can be realistic goals. To quote the producer, “Stay with it, and try to keep up” he described about his method of control.

It is very important to mention that there is a lot of guidance and technical assistance available. The Soil and Water Conservation Districts have been working side by side with the Maine Natural Areas Program to develop technical resources for landowners to identify, notify, and control invasive species on their land. In the last two years they developed invasive species surveys on agricultural lands that identify species, density of those species, methods of control and prioritization of attack. The person leading the charge for the Maine Natural Areas Program is Nancy Olmsted; she is an Invasive Plant Biologist. Nancy has been very active in many communities around Maine to answer questions and provide great guidance on invasive species and how to deal with this issues in different types of landbases.

For information about any of our conservation projects please contact Dale Finseth at 622-7847, x 3 or check our website at www.kcsxcd.org



Recyclable Plastics

Most of us have learned to identify recyclable waste plastics by a number ... 1 through 7 within a triangle ... stamped somewhere on the item. The number identifies the resin or mixture of resins that make up the plastic content. Over the years of recycling history, we, as the source of these particular solid wastes have come to trust that if it's plastic and has a number on it, it will be recycled.

Never have these numbers been so important as they are now, but for an unfortunate reason: A major buyer of American discarded but recyclable plastics, the country of China, has all but closed the door on further buying because they discovered they've been buying bales and bales of impure content: plastics mixed with batteries or paper, plastics covered with food, and plastics with dirty diapers mixed in. Thus, they've had to re-sort and discard at tremendous cost.

The jury is still out as to just where the blame falls along the recycling highway from your house to China, but there are many fingers pointing to the ease, convenience and profitability of single-stream sorting, pick-up and processing that has been adopted by many municipalities across the country.

What this has meant is for U.S. towns and cities, large and small, is that the market for certain plastics, particularly 3 through 7, has dried up and, while still collected as recyclables in many communities, are in fact being landfilled. So far, plastics

numbered 1 and 2 are still collected and sold for recycling.

Is There Something You Can Do?

- Studies show that most Americans care about recycling and want to do it correctly. If you count yourself as one of these, find out your town's or city's current recycling policies and practices and follow them. Stay in touch and try to understand burdensome or unfortunate changes as the result of a continuum of events starting well beyond your town or city boundaries. If you're a seasonal resident remember that recycling policies and practices at your temporary address may be (and probably are) different from those of your home town.
- Regardless of your jurisdiction's policies, there are some best practices for you when it comes to recycling plastics:
 - Don't toss anything in a recycling bin or bag that contains leftover food or scraps. Rinse it out, then throw.
 - Throw it in the right bin or bag. If you aren't sure, ask someone knowledgeable at town hall, city hall or the transfer station.
 - Create less waste. It is estimated that Americans create 4.4 pounds of solid waste each day, much of it plastic and used only once.
 - Recycle flexible (non-rigid) plastics by depositing

them at grocery store or big-box store drop-off sites. This category includes retail bags, wraps, packaging, produce bags, paper towel and beverage overwrap, Ziploc bags, newspaper wraps and dry-cleaning bags. These plastics, while usually not stamped with a number, are recyclable. However, they are not easily handled by transfer stations and recycling processors and while they may be collected they are not welcome and usually landfilled. For more information on what products are made from these filmy plastics and for collection sites nearest you visit: www.plasticfilmrecycling.com.

- Maine is one of only eleven states that has passed bottle bill legislation, a law that requires a minimum refundable deposit on beer, soft drink or other beverage containers which is refunded with their return when empty. The containers, many of which are plastic, are recycled by the source manufacturers. Please make sure you, your out-of-state friends and renters are aware of this Maine “tradition.”

Future articles will focus on other aspects of solid waste management, including disposal (e.g. landfilling) and diversion (ways to avoid landfilling) of common individual and household wastes. You can contact the author, Susan Littlefield, Belgrade resident, with comments or suggestions at selittlefield13@gmail.com.





F. A. Rizzo Appraisal Company

Frank Rizzo

Consultant/Appraiser

Estate Appraisal & Planning

Certified Residential cr709

tel. (207) 495-3365

cell (207) 458-4916

farizzo@roadrunner.com



Since 1992

— Accommodations —

Alden Camps, rustic lakeside cottages on East Pond, since 1911, American Plan meals, boat and motor rentals, dining and lobster bake open to public by reservation, 3 Alden Camps Cove, Oakland, 465-7703, www.aldencamps.com

Castle Island Camps, cottages on the water on Long Pond, American Plan meals, boat and kayak rentals, Castle Island Road, Belgrade Lakes, 495-3312, www.castleislandcamps.com

The Village Inn, rooms near the water, in the heart of the Village, 157 Main Street, Belgrade Lakes, 495-3553, www.villageinnandtavern.com

Belgrade Vacation Rentals, lakeside camp and cottage rentals throughout the area, long and short stays, many size accommodations and rates, 1-800-760-1503, www.belgradevacationrentals.com

Lakeside Cottage Rentals, featuring over 70 private homes, 24/7 customer friendly service, 25 Marina Drive, Belgrade Lakes, 592-5577, 495-4046, www.lcrentals.com



Notebook

Vintage Baseball Festival

• The 3rd Annual New England Vintage Baseball Festival, sponsored by the Cornish Historical Society and the Cornish Fairgrounds Committee, will be held June 23-24 at the historic Fairgrounds, Route 25. Nine teams will play 8-10 games per day on 3 fields. The games are played by 1864 rules using lemon peel baseballs and wooden bats, and the players wear 1860s wool uniforms. Vintage games begin at 9:30 am on Saturday and 8 am on Sunday. Sunday's first game will feature Cornish residents led by Alan Wentworth. FREE ADMISSION! Food & ice cream concessions. Bring a blanket or chair – large shade tent will be available. www.newenglandbaseballfestival.com 625-3095 or 625-3281

Maine Wildlife Park

• Summer Wildlife Days, sponsored by the Friends of the Maine Wildlife Park, will offer special programs most Saturdays 11 am-2 pm. The following programs have been scheduled for June and July: June 23 Sparks Ark rehabilitation work and outreach with nuisance wildlife and unwanted and illegal exotics; June 30 Wildlife Enrichment Day; July 7 Maine Nature Artists; July 14 Maine Wildlife Authors; July 21 Chainsaw Wildlife Artists; and July 28 ATV Maine. Opportunities at the park include volunteer positions, participation as a Friend, season passes and facilities for special occasions. 657-4977

BLA Adopt-A-Shoreline Program

• The Belgrade Lakes Association in collaboration with the 7 Lakes Alliance (formerly the Belgrade Regional Conservation Alliance), as part of the STOP Milfoil initiative, is urging any lakeshore property owner or group to participate in the early invasives detection Adopt-A-Shoreline program. A training session has been scheduled for Monday, July 9, 3 pm, at the Maine Lakes Resource Center in Belgrade Lakes and the association is available to attend local road association meetings or conduct the training at a place and time of convenience. 495-6039.

Kindfield POPS Lineup Released

• The performer lineup is all set for the 16th Kindfield POPS Concert to be held June 30, 4:30 pm, at the Kennedy Farm in Kingfield. The Western Mountain Trash Can Band will welcome the audience followed on stage by Shawn Toley, Golden Oak, Gypsy Tailwind Reunion featuring Anna Lombard, the Adam Ezra Group, the Bangor Symphony Orchestra and a special collaboration with Gypsy Tailwind and Adam Ezra Group. Fireworks will light up the sky with a Fabulous Finale around 9:30 pm. Tickets are available at Tranten's and Skowhegan Savings Bank in Kingfield and

Farmington and www.kingfieldpops.com

Augusta

• Le Festival de la Bastille is scheduled for July 13 and 14 at Pete Gagne Fields, 65 Old Belgrade Road. Saturday's activities will start at 2 pm with a Children's Program 2-4 pm and a chicken barbecue 4-6 pm. Music for the Festival will include: LeBlanc Family, Louise Mailhot, La Releve, Jimmy Jo and the Jambolayus and Les Jerrets Noir. Admission is \$5 per day; under 18 years of age free.

Hallowell

• The Harlow Gallery kicks off summer with the annual Summer Members Show & Sale, featuring a diverse collection of work by Harlow artists members. This year artists were invited to submit work responding to the theme of "Construction/Deconstruction" in celebration of the MaineDOT road construction project in Hallowell. The exhibition is on view July 6-28 at 100 Water Street in the upstairs gallery. The public is invited to attend the opening reception on Friday, July 6, 5-7 pm, which coincides with the opening for "Dog Days" on view in the downstairs gallery July 6-14. 622-3813

Monmouth

• The Theater at Monmouth's 2018 Family Show is "The True Story of Little Red," a new adaptation of the Brothers Grimm classic fairy tale. The run starts on Saturday, July 30 at 1 pm and continues throughout the season including matinee performances on both weekdays and weekends. This modern-day twist on a century's old classic, traditionally warning us not to trust strangers and to stay on the straight and narrow path, asks modern audiences to consider different points of view in an effort to avoid stereotypes and to better understand people different from ourselves. 933-9999

Oakland

• Oakfest, Celebrating All That Oakland Has To Offer!, will take place July 27, 28 and 29. A parade will march down Main Street on Friday, July 27 at 6 pm, followed by a Street Dance on Main Street. On Saturday, July 28, from 10 am to 4 pm, there will be an Open Air Market, live music, food, vendors, children's activities and more at Williams Elementary School on Pleasant Street. On Sunday, July 29, a Triathlon will be held at the Boat Landing. www.oakfestmaine.com

Readfield

• RSU 38 Maranacook Adult Education Kids' summer sports camps start Monday, June 25 as follows:
- Theatre Camp, grades 5-8; June 25-29
- Lady Black Bear Basketball – grades 4-8; June 25-

ALDEN CAMPS
Est. 1911

**3 Alden Camps Cove
Oakland, Me 04963
(207-465-7703)**

- Lobster Bakes on Friday nights by Reservation
- Lakeside Cottages • Boats & Motors
- Full American Plan
- Dining on the Porch by reservation Saturday through Wednesday

E-mail: info@aldencamps.com • Website: www.aldencamps.com

CHILDREN'S

BOOK CELLAR

BOOKS, PUZZLES, TOYS, GAMES

A store for children of all ages, the young and the young at heart.

Open Monday 12 to 5 • Tues. – Sat. 9 to 5
52 Main St. Waterville 872-4543

DAVID STEVENS

Excavation & Septic Systems

LOAM GRAVEL SAND

465-3815
Cell: 314-0314

P.O. Box 146 • Belgrade, Maine 04917

CASTLE ISLAND CAMPS

Bait, Tackle, Gas,
Boat, Kayak, and
Paddleboard
Rentals

Boats, Daily or
Weekly

495-3312
Rentals for
Long Pond Only

SPIRO & COMPANY

Gourmet Food Truck

"A Fresh Taste of Greece"

Belgrade Lakes • 441-2103

Open daily 11-4 • Friday 11-7

www.spiroandcompany.com

David J. Auclair
www.auclaircycle.com

**AUCLAIR
CYCLE & SKI**

64-66 BANGOR ST. AUGUSTA, ME 04330
623-4351 / 800-734-7171 • Fast Professional Service
Bicycles • Skateboards • Roof Racks • Rentals

www.MaineAdirondackChairs.com

Custom White Cedar Furniture
by Rob Lemire

207-620-2592
Vassalboro, Maine

Locally sourced
Maine White Cedar

Free delivery within
40 miles of Vassalboro

Assembled chairs
Planed & sanded one side
Thicker wood
Save money
Kits available for shipping



Dining

Augusta

• **Riverfront Barbeque & Grille and Gin Mill Lounge**, world class barbeque, seafood, pasta and vegetarian entrees, full service dining, catering, bulk take out, 300 Water Street, Augusta, www.riverfrontbbq.com, 622-8899

Belgrade

• **Sadie's Boathouse Restaurant** at Great Pond Marine, hearty contemporary American fare, 25 Marina Drive, Belgrade Lakes, 495-4045, 242-1273

• **Spiro & Company**, gourmet Greek food, Main Street, Belgrade Lakes Village, www.spiroandcompany.com, 441-2103

• **The Village Inn and Tavern**, 157 Main Street, Route 27, Belgrade Lakes Village, 495-3553, www.villageandtavern.com

• **Winterberry Farm Café**, homemade treats, pie, cookies, granola bars, grilled organic cheese sandwiches, veggies, drinks, Route 27, Belgrade, 649-3331

Oakland

• **Alden Camps**, lunch or dinner by reservation Saturday-Wednesday space permitting, lobster bakes on Friday night by reservation, 3 Alden Camps Cove, Oakland, www.aldencamps.com, 465-7703

• **Riverside Farm Restaurant & Wine Market**, simple, wholesome food and drink since 1990, 291 Fairfield Street, Oakland, www.riversidefarmmarket.com, 465-4439

Oakland - Wines & Spirits

• **Tree Spirits**, tasting room for award winning wines and spirits made from local apples, pears and maple syrup, tours available, 152 Fairfield Street, Oakland, www.treespiritsofmaine.com

28

- Boys' Blace Bear Basketball Camp - grades 4-8; June 25-28

- Lakers' Track Club - boys and girls ages 6-15; June 25-August 11

- Boys & Girls Soccer Camp, grades 3-8; July 9-13

- Little Kickers Soccer Camp, boys and girls ages 5-8; August 13-16

To register go to <http://maranacook.maineadult-ed.org> or call 685-4923, x 1065

Rome

• Monthly bean suppers will be held the 3rd Saturday of the month through October on the following dates: July 21, August 18, September 15, October 20. The menu includes 3 kinds of beans, American chop suey, hot dogs, bread, coleslaw, cornbread and homemade pies. All you can eat. Adults \$7, under 5 free. Family of 4 or more \$20. Presented by the Mt. Philip Grange \$545.

Skowegan

• Historical Tours of Skowegan have been scheduled throughout the summer as follows: June 29 - Old Bloomfield Cemetery Tour, off Route 201, rain date June 30; July 20 - Historic Skowegan Falls/Island Tour, meet at Arnold Park on the island, rain date July 21; July 27 - Southside Cemetery Tour,

...*Take it Outside continued from page 5*

(4H), and Tyleek (Boy Scouts). As a group, the family kind of epitomized the theme of this column: taking kids outside to gain outdoor experience and knowledge. I look forward to seeing them out on our trails in the future.

Among the many hats I wear, I serve as the president of the board of The Maine Lakes Society, a state-wide nonprofit dedicated to protecting the health of Maine's lakes for future generations through science-based education, action, and policy (<http://mainelakessociety.org/>). In addition to overseeing the LakeSmart Program for lake associations across Maine, we have a program called LakesAlive, designed to help train tomorrow's lake stewards. We have a 30-ft floating classroom (the Melinda Ann) that we use to take school students and other youth groups out on Maine lakes to give them some hands-on, experiential

upper Main Street, rain date July 28; August 17 - North Cemetery's "Useful Citizens" Tour, behind Walton Apartments on Madison Avenue, rain date August 18. All tours are on Friday at 10 am. Suggested donation is \$5 per participant. 474-6632

Waterville

• Mid-Maine Chamber of Commerce's 26th Annual Taste of Waterville will be held on Wednesday, August 8, 11 am-11 pm in Downtown Waterville and is now accepting applications for vendor booths. Participating booths from through the region include members and non-members. There are over 10,000 people expected to attend the Taste. Vendor booths include but are not limited to a ten foot space which allows for a canopy setup; they are open from 11 am-7 pm and are set up in the Concourse. 873-3315

• The Maine International Film Festival (MIFF), Maine's oldest and largest, is pleased to launch its new website - www.MIFF.org - in advance of this year's 21st annual event. The new MIFF website includes a mobile-first, smartphone-friendly platform, allowing Festival attendees to take full advantage of the free downtown Waterville WIFI. The website also features an easy-to-use ticketing system, helpful links to information about previous years' programs and video highlights of the MIFF experience. 232-6005

lake science, such as doing plankton tows and Secchi depth readings and learning to drive our video-equipped, remotely operated vehicle (ROV) that allows them to inspect the depths of the lake. They also use a benthic dredge to capture critters and sediments from the bottom. Last week, sponsored by the Town of Wilton and Friends of Wilson Lake, Phil Mulville and I towed the Melinda Ann to Wilson Lake where we took nearly 40 fourth-grade students from Academy Hill School (RSU-9) out on three trips, teaching them a bit about watersheds and lake science. The kids had a ball and learned a lot. On the plankton tow, they captured a real-life Cyclops zooplankton like the one on Sponge Bob Square Pants!

This area offers some great outdoor recreation, whether you like to hike, bike, birdwatch, fish, sail, or paddle a canoe or kayak. Pick up a

Continued on page 17...

157 Main Street/RT 27
Belgrade Lakes, Maine 04918
villageinnandtavern@gmail.com
207.495.3553
www.villageinnandtavern.com

THE VILLAGE INN AND TAVERN
Belgrade Lakes, Maine
SINCE 1921

WINTERBERRYFARMSTAND.COM
Route 27, Belgrade
207.649.3331

Farm-to-Table Dinner
AT WINTERBERRY FARM IN BELGRADE
A family friendly evening on the farm • Dinner • Live Music • Contra Dance
July 15th at 5 pm

Belgrade's working family farm
FARMSTORE & CAFÉ
Open 7 days a week, 9am - 6pm
Featuring all-organic products grown and produced here on the farm.
3 miles south of Belgrade Lakes Village on route 27.

Specializing In

CAMP JACKING AND LEVELING

John Webster
32 Webster Way
Belgrade, ME 04917

Sill Replacement
Retaining Walls

(207) 495-2965
35+ Years Experience

JOY M. INTRIAGO, CPA

INDIVIDUAL, BUSINESS, ESTATE TAX

87 MAIN STREET
BELGRADE LAKES, ME 04918
207-482-0636

JOY@INTRIAGOADVISORS.COM

Innovative Painting, LLC.

Epoxy Sales & Services

Residential/Commercial/Pressure Washing/
Interior/Exterior/Spray, Brush & Roll

Brian C. Jones
restorationjones.com
jonesbrian67@yahoo.com
(207) 462-4822

THE Peoples BOOK SHOP
USED BOOKS
BUY • SELL • TRADE

605 Wings Mill Road
Mount Vernon, Maine
620-2392
nosehead51@roadrunner.com



-Business Directory-

ACCOMMODATIONS

See page 18

ACCOUNTING AND TAX PREPARATION

Joy M. Intriago, CPA, 87 Main Street, Belgrade Lakes. 482-0636

ADIRONDACK CHAIRS

Maine Adirondack Chairs, 97 Holman Day Road, Vassalboro, 620-2592, www.maineadirondackchairs.com

ANTIQUES

Hathaway Mill Antiques, Multi-Dealer Emporium, 10 Water Street, Waterville, 877-0250, www.athawaymillantiques.com

ART

Colby College Museum of Art, 5600 Mayflower Hill, Waterville, 859-4000, www.colby.edu/museum/

ART AND OFFICE SUPPLIES

Berry's Stationers, 835-B Kennedy Memorial Drive, Oakland. 716-1076

BANKING

Skowhegan Savings Bank, 450 Civic Center Drive, Route 27, Augusta, 1-800-303-9511, 623-2300, www.skowsavings.com

BEVERAGES

Tree Spirits, 152 Fairfield Street, Oakland, 861-2723, www.treespiritsofmaine.com

BICYCLES

Auclair Cycle & Ski, 64 Bangor Street, Augusta, 623-4351, www.auclaircycle.com

BOAT COVERS

Covers It All Upholstery, 1042 Kennedy Memorial Dr, Oakland, 465-7847, www.waterville-upholstery.com

BOAT LIFTS

Hammond Lumber Company, Auburn, Bangor, Belgrade, Boothbay Harbor, Brunswick, Damariscotta, Fairfield, Farmington, Greenville, Pemiquid, Portland, Skowhegan, Wilton, 1 866-HAMMOND, www.hammondlumber.com

BOAT MOORINGS

Great Pond Marina, 25 Marina Drive, Route 27, Belgrade Lakes, 495-2213, www.greatpondmarina.com

BOAT RENTALS

Castle Island Camps, Long Pond, 441 Castle Island Road, Belgrade Lakes, 495-3312, www.castleislandcamps.com

Great Pond Marina, 25 Marina Drive, Route 27, Belgrade Lakes, 495-2213, www.greatpondmarina.com

BOAT SALES AND SERVICES

Clark Marine, 57 Puddledock Road, Manchester, 622-7011, mail@clarkmarine.biz, funonthewaterstartshere.com

Hamlin's Marine, 290 West River Road, Waterville, 872-5660, www.hamlinsmarine.com

Mid-Maine Marine and RV, 885 Kennedy Memorial Drive, Oakland, 465-2146, www.mid-mainemarine.com

BOAT STORAGE

Belgrade Boat Storage, 31 Pinkham's Cove Road, Belgrade, 495-3421, 314-3287, www.belgradeboatstorage.com

Belgrade Lakes Marine and Storage, Inc, 366 Augusta Road, Belgrade, 495-2378, www.belgradelakesmarine.com

Clark Marine, 57 Puddledock Road, Manchester, 622-7011; and Route 202, Monmouth, mail@clarkmarine.biz, funonthewaterstartshere.com

Great Pond Marina, 25 Marina Drive, Route 27, Belgrade Lakes, 495-2213, www.greatpondmarina.com

Hamlin's Marine, 290 West River Road, Waterville, 872-5660, www.hamlinsmarine.com

Mid-Maine Marine, 885 Kennedy Memorial Drive, Oakland, 465-2146, www.midmainemarine.com

BOOKS

Children's Book Cellar, 52 Main Street, Waterville, 872-4543, childrensbookcellar.com

BUILDERS

Craig's Carpentry/North Bay Estates, Route 8, North Belgrade, Craig Alexander, 649-3749

G&L Contracting, 116 Lakeshore Drive, Belgrade Lakes, 215-7951, 495-2325, 233-7408, gandlcontractingmaine.com

LakeHouse Design, Build, Renovations, 17 Birchwood Road, Augusta, 242-3663, www.lakehousedesignbuild.com

BUILDING MATERIALS

Hammond Lumber Company, Auburn, Bangor, Belgrade, Boothbay Harbor, Brunswick, Damariscotta, Fairfield, Farmington, Greenville, Pemiquid, Portland, Skowhegan, Wilton, 1 866-HAMMOND, www.hammondlumber.com

CAMP JACKING

John Webster, Jacking and Leveling, 32 Webster Way, Belgrade. 495-2965

COMPUTER CONSULTANTS

Macintosh Solutions, Michael Breault, 24 Welch Road, Wilton, 645-5083, cell 578-0226, www.michaelbreault.net

DINING

See Directory on page 15

DOCKS

G&L Contracting, 116 Lakeshore Drive, Belgrade Lakes, 495-2325, 215-7951, 233-7408, gandlcontractingmaine.com

Hammond Lumber Company, Auburn, Bangor, Belgrade, Boothbay Harbor, Brunswick, Damariscotta, Fairfield, Farmington, Greenville, Pemaquid, Portland, Skowhegan, Wilton, 1 866-HAMMOND, www.hammondlumber.com

ELDER CARE

Maine-ly Elder Care, 28 Center Street, Oakland, 465-3249, www.maine-lyeldercare.com

ENGINEERING

Thayer Engineering, septic design, storm water mitigation, permitting, 17 Hasson Street, Farmingdale, 582-7762, www.thayereng.com

ESTATE APPRAISALS

F.A. Rizzo Appraisal Company, estate appraisal and planning for real estate, 495-3365, 458-4916, farizzo@roadrunner.com

EXCAVATING

Belgrade Boat Storage, 31 Pinkham's Cove Road, Belgrade, 495-3421, 314-3287, belgradeboatrentals.com

David Stevens, P0 Box 146, Belgrade, 465-3815, cell 314-0314

EYE CARE

Eye Care of Maine, 325 E. Kennedy Memorial Drive, Waterville, 873-2731, 1-800-660-3403, www.Maine2020.com

FARMSTANDS

Winterberry Farm, 538 Augusta Road, Route 27, Belgrade, 495-2593, 649-3331, www.winterberryfarmstand.com

FINANCIAL PLANNING

Golden Pond Wealth Management, 129 Silver Street, Waterville, 873-2200, www.golden-pondwealth.com

FIREWOOD

J & M Logging, Inc. 853 Civic Center Drive, Augusta, 622-6353, www.jmlogginginc.com



FLOORING

Hammond Lumber Company, Auburn, Bangor, Belgrade, Boothbay, Brunswick, Damariscotta, Fairfield, Farmington, Greenville, Pemaquid, Portland, Skowhegan, Wilton, 866-HAMMOND, www.hammondlumber.com

GENERATORS

Generators of Maine, 262 Augusta Road, Belgrade, 495-2285, www.generatorsofmaine.com

HEALTH CENTERS

Belgrade Regional Health Center, 4 Clement Way, Belgrade Lakes, 495-3323, www.healthreachchc.org, belgradechc.org

INSECT CONTROL

Mosquito Banditos, mosquitobanditos-maine.com, 613-5656

JEWELRY

L.Tardif Jeweler, 62 Main St., Waterville, 872-7542, ltardifjewelers.com

KITCHENS

Hammond Lumber Company, Auburn, Bangor, Belgrade, Boothbay, Brunswick, Damariscotta, Fairfield, Farmington, Greenville, Pemaquid, Portland, Skowhegan, Wilton, 866-HAMMOND, www.hammondlumber.com

LAKE ASSOCIATIONS

Belgrade Lakes Association (BLA), Long Pond and Great Pond, PO Box 551, 137 Main Street, Belgrade Lakes, 512-5150, belgradelakesassociation.org

LANDSCAPING

G&L Contracting, Belgrade Lakes, 215-7951, 495-2325, 233-7408, gandlcontractingmaine.com
Lynch Landscaping, Skowhegan, 474-2420, lynchlandscaping.com

MOVIE THEATERS

Railroad Square Cinema, call for titles and times, 17 Railroad Square, Waterville, 873-6526, www.railroadsquarecinema.com

MUSEUMS

Colby College Museum of Art, 5600 Mayflower Hill, Waterville, 859-5600, www.colby.edu/museum/

PHYSICAL THERAPY

Dockside Physical Therapy, 47 Main Street, Belgrade Lakes, 495-3195, 512-2544, Fax 512-2545

PIANO ENJOYMENT

Diane Gorman, 191B Bartlett Road, Belgrade, 495-3222

Take it Outside continued from page 15....

map of the local trails at Day's Store or from the 7-LA at the Maine Lakes Resource Center (MLRC). (Check out the Belgrade Lakes Association's (BLA) LakeSmart Program while you are there). Get out and explore! Sign your kids up to learn to sail through the Great Pond Yacht Club (<https://greatpondyachtclub.com/junior-sailing-program/>). On Friday, July 6th, at 2 PM, staff from Chewonki will be doing a presentation on "Owls of Maine." Keep an eye on the sign in front of the MLRC and check the 7-LA web site and Facebook page for further updates. And make sure you take a kid along on your next outdoor adventure!



Academy Hill fourth graders on the Melinda Ann, examining the "catch" from the benthic dredge on Wilson Lake.

REAL ESTATE DEVELOPMENTS

North Bay Estates, Belgrade, 649-3749, crgsnbe@yahoo.com

REAL ESTATE

Day's Real Estate, 262 Augusta Road, Route 27, Belgrade Lakes, 495-3111, www.daysrealestate.com
Hoang Realty, 31 Western Ave., Augusta, 623-0623, www.hoangrealty.com
LakeHome Group, Main Street, Belgrade Lakes, 495-2500,
Lakepoint Real Estate, 221 Main Street, Belgrade Lakes, 495-3700, www.belgradelakepoint.com
Sprague & Curtis Real Estate, 75 Western Avenue, Augusta, 623-1123, www.spragueandcurtis.com

LODGING RESERVATIONS

See page 14

RESTAURANTS

See Dining Directory on page 15

RETIREMENT COMMUNITIES

Granite Hill Estates, 60 Balsam Drive, Hallowell, 626-7786, 1-888-321-1119, www.granitehillestates.com

SCHOOLS

St. Michael School, grades pre-K 3-year-old through 8th, 56 Sewell Street, Augusta, 623-3491, www.smsmaine.org

SECURITY SYSTEMS

Cayer Security Services, Inc, 208 College Avenue, Waterville, 453-9177, www.cayersecurity.com

SURVEYING

Acme Land Surveying, 108 Fairbanks Road, Suite 5, Farmington, 778-4081, www.acmelandsurveying.com

WINDOWS

Hammond Lumber Company. Auburn, Bangor, Belgrade, Boothbay, Brunswick, Damariscotta, Fairfield, Farmington, Greenville, Pemaquid, Portland, Skowhegan, Wilton, 1-866-HAMMOND, www.hammondlumber.com

Changes?
 Updates?
 New contact information?
 Please let us know...
mo.breault@gmail.com
 or ebelnews@earthlink.net



Saving the Family Cottage

by Martha F. Barkley

The Fifth Edition of this 2009 book of legal advice is out and has been generously given to our Belgrade Public Library. When you have three lawyers writing 198 pages of common sense approaches to saving the vacation spot full of family memories, it is certainly worth a look.

I do not pretend to understand the many complex issues of taxes, rentals, sharing a family cottage, but the Table of Contents will guide you: Trouble in Paradise, Minimizing the Federal Tax Bite, Scheduling and Use, etc.

Our Maine term for a lakeside family home is camp, not cottage. The glossary in this book had Cabbage listed with two definitions: "(1) A vacation home larger than a cabin but smaller than a cottage; (2) something that must be spent each year for the privilege of keeping a cottage."

Page 31 was helpful to my understanding. "According to the most recent U.S. census data, Florida leads in the number of seasonal recreational properties with 485,000, followed by California (239,000), New York (236,000), and Michigan (235,000). Three New England states claim the highest saturation of cottages: 16% of homes in Maine are cottages, followed by 15% in Vermont, and 10% in New Hampshire."

The husband / wife lawyer authors are accompanied by a third lawyer who is a fourth-genera-

"As is true for so many families, the cottage was the elixir that brought our family closer together. And so it is some kind of tragic irony that, when the time comes to discuss changes in ownership...sorting out the particulars can shred the same family ties that the cottage made strong."

tion Michigan cottage owner. Their expertise offers many plans to consider along with an up to date website to consult.

I was struck by the reference in this informative book to John Nash, Nobel Prize Winner for game theory. His story in A Beautiful Mind was a prize winning biography and movie. Partition Planning apparently seems to be the worst, according to Chapter 2. Other plans provide a smooth transition from one generation to the next. The Rabbit Problem can almost be figured out by anyone without checking the chart on page 30.

Mal Dawson gave me the book for our Belgrade Public Library after giving away many copies to friends who wondered how to save their Maine camps. The Great Pond lakeside home of Arthur Godfrey was purchased and

moved to Dawson's property on a nearby lake years ago. It was first placed 75 feet back, but then moved again when Maine regulations changed to 100 feet back from the water line. It is now their guest house.

We also experienced that 75 feet change to 100 feet from the lake, so we sold our Jamaica Point land, with a Maine Conservancy contribution. Check out this library book which is "A Guide to Succession Planning for Your Cottage, Cabin, Camp or Vacation Home". Thank goodness Cabbage was NOT on the book jacket!

Elk Lake is in the dedication and the three authors all have Lake Superior and Michigan roots in vacation homes. Deborah Wyatt Fellows, Founder, Traverse, Northern Michigan's Magazine, waxes poetic in her Foreword.

"As is true for so many families, the cottage was the elixir that brought our family closer together. And so it is some kind of tragic irony that, when the time comes to discuss changes in ownership...sorting out the particulars can shred the same family ties that the cottage made strong."

"Those families know that as the world moves faster and faster...there will always be a need for a simple place, bathed in sunlight and solace, that quite effortlessly brings us closer together."



spragueandcurtis.com

623.1123

75 Western Ave. • Augusta, ME

<p>AUGUSTA - NEW LISTING - Wonderful neighborhood, double lot, west side location, 3-4BR, 2.5 BA Cape style home. Eat-in Oak kitchen w/brick hearth & cozy wood stove, open LR/DR w/fireplace & access to the 3 season sunroom & outside deck. 2 1st floor BD plus full BA. Upstairs: BD w/window dormers, a full BA, & an attic storage room. Daylight lower level w/ rec room/FR w/wet bar, half BA, laundry area, workshop/utility area & walk out access to the back yard. MLS#1355714 \$249,900</p>	<p>WINDSOR-NEW LISTING -Cape style home, great rural & private location. 2.5AC lot, ample waterfrontage on Sheepscot River, sunny kitchen w/ vaulted ceilings & exposed beams, large LR w/gas stove/hearth, 2-3BR, full BA w/laundry, office, paved drive, new forced hot air furnace & water tank (to be installed in late June) 22x22 garage, open concept living area. 2nd level of house not finished- could be 2BR and bath. COME SEE! MLS#1355702 \$159,900</p>	<p>OAKLAND-NEW LISTING-LAND - Very nice buildable lot in desirable Oakland area. This large in-town lot sits on the corner of High Street and S. Gage Road and is close to all local amenities. MLS #1355238 \$24,999</p>
<p>LITCHFIELD-NEW LISTING - Beautiful custom built home at the end of a private road. Main level features an open kitchen/LR/DR. Appliance kitchen, center bar. Three BR and two BA (master w/private bath). Lower level features an office or den and massive family/rec room w/pellet stove. Separate laundry area. One car garage under plus detached oversize garage. MLS#1354651 \$290,000</p>	<p>AUGUSTA-NEW LISTING - Very nice Raised Ranch in very desirable East side Mayfair neighborhood. 3+BR, 1 full BA and two 1/2 BA. Master BR w/half BA. New tile and carpets throughout. Updated kitchen which opens to back deck overlooking the backyard and woods. Beautiful brick fireplace in LR and FR. Newer Buderus boiler, 1 car garage and more! MLS #1354496 \$179,500</p>	<p>AUGUSTA-NEW LISTING - Charming Cape Cod home in this pleasant Augusta neighborhood! First floor offers an appliance kitchen with lots of cabinets, LR with hardwood floors. 2BR (one could be a den or office) and full bath. The second floor offers two bedrooms. Full basement. Oil heat. Nice backyard. MOVE IN CONDITION! Convenient to everything! MLS#1354454 \$128,000</p>
<p>CHELSEA-NEW LISTING - Spacious 3 BR, 2 BA ranch. Eat-in kitchen, LR/den. Massive master BD w/private BA. Three season sun-room. Finished room in the basement, 3 bay garage under the house, plus a 2 car detached garage leave plenty of room for storage, vehicles, and much more! Surveyed in 2018, this 5.8 acre lot includes 248' on Togus Stream. Priced below assessed value! Lots of possibilities here. MLS #1354322 \$199,000</p>	<p>WINTHROP-NEW LISTING - Here's a spacious home in a lovely neighborhood of Winthrop! 1st floor offers open kitchen/LR/DR. Office, BA, BD and FR also on the first floor. Second floor offers 3+ bedrooms and bath (master is huge). Also included is a 2 car garage with charming efficiency apartment for guests or rental income. MLS#1354191 \$165,000</p>	<p>READFIELD-NEW LISTING - Spectacular, elegant luxury estate on gorgeous hilltop setting, 30+/- acres - you can see for miles, including Cobossee Lake. Manicured grounds w/brick terrace, deck overlooking pond & stone walls. Stunning foyer, DR w/custom moldings, sunken LR w/brick fireplace opens to porch & the view! Appliance kitchen w/ cherry cabinets/breakfast bar. Huge FR. Master suite and a private office w/fireplace. 1st floor has a 2 BD suite w/bath & common playroom. Wing has guest suite with bath or is a 4th bedroom. Media/entertainment room. 3 car attached garage. Large basement with 4th garage for boat/car, heated storage. MLS#1355241 \$799,900</p>

July 27, 28 & 29

www.oakfestmaine.com

OAKFEST

Celebrating All That Oakland Has To Offer!

<p>PARADE - MAIN STREET FRIDAY JULY 27 - 6:00 PM</p>	<p>STREET DANCE - MAIN STREET FOLLOWING PARADE</p>
<p>PARADE!</p>	<p>VENDORS!</p>
<p>MAINE 20TH</p>	<p>Open Air Market Saturday July 28 10am-4pm Pleasant Street at Williams Elementary School</p>
<p>CHILDREN'S ACTIVITIES!</p>	<p>TRIATHLON - 9 AM SUNDAY JULY 29 BOAT LANDING</p>
<p>LIVE MUSIC!</p>	<p>FOOD!</p>

2018 Grand Marshals
Donna & Charlie Pullen

United Rentals

MATHIEU'S
CYCLE & FITNESS STORE

Higgins & Bolduc

Hammond Lumber Company

Fabian

Camden NATIONAL BANK

More Information at www.oakfestmaine.com



Strawberry Festival, Craft Fair and Living History at the Norlands

A Strawberry Festival featuring a craft fair and local history will be held on Saturday, June 23, 2018, 11am to 4pm, at the Washburn-Norlands Living History Center, in Livermore. This biennial event features artisans on the front lawn demonstrating hand-made craft and selling original artwork. Other day-long activities include horse-drawn hayrides, tours of the 1867 Washburn family mansion, blacksmithing demonstrations, lessons of the past in the one-room schoolhouse, children's craft activities, living history in the farmer's cottage, special presentations in the meeting house, a guided nature walk and old-fashioned outdoor games such as hoops & graces.

STRAWBERRY SHORTCAKE made with homemade biscuits, local strawberries, and real whipped cream will be sale. (\$4 each benefits the Norlands)

For an enchanted experience and to get inspired about life in 19th-century Maine and Livermore's celebrated Washburn family – visit the Norlands – where history comes to life! Experience the smells, sounds, and sights of living in the 1800s. The buildings, the landscape, and the activities all serve to provide an enchanted experience, a step back in time. All tours and special programs are presented by Norlands volunteers in period dress.

BRING THE FAMILY AND STAY THE ENTIRE DAY. The Jay/Livermore Falls Lions Club will be selling hamburgers and hot dogs. Or, bring a picnic lunch and enjoy the beautiful grounds.

General admission is \$10; \$6 ages 12 and under; \$25 family rate for 2 adults with up to 3 children



Hiram Briggs at Norlands

under age 18. Children age 5 and under are admitted free. Members of Norlands enjoy a 20% discount on admission (\$8 individual/\$20 family rate). A membership to Norlands is a year-round connection to history and fun! Memberships start at \$15.00 for individuals and come with discount on admissions and purchases in the gift shop. Visit our website – www.norlands.org/become-a-member.html for details.

The Norlands is located at 290 Norlands Road in Livermore. FMI and updates to the program schedule: 207-897-4366 or www.norlands.org.

SPECIAL PRESENTATIONS INCLUDE

"A Letter to Father: General Cadwallader Colden Washburn" at Noon and 3pm. It's the mid-1800s at Norlands and Nettie and Fanny are living with their grandparents, Israel and Patty. Their mother is hospitalized and their father, Cadwallader Colden

Washburn, is a congressman and businessman living in Wisconsin. He has sent his young daughters to live with their grandparents, on the same farm where he grew up. In this special vignette, see "Patty" help her granddaughters write a letter to their father sharing their adventures and perspectives about life on a farm. The audience will be encouraged to help them out! The program is based on actual letters in the family archives.

"Meet the Bradford Family" in the Farmer's Cottage throughout the day. The Bradfords were neighbors to the Washburns. Talk to members of the family, portrayed by Norlands' interpreters, as they go about their daily living and prepare the "nooning" meal on the woodstove. The "Bradfords" will also share cooking tips as they prepare their meal that includes strawberry pie.

At 1pm, visitors may take a Guided Nature Walk to the Pools of Simeon. Take a guided walk on an old carriage trail to two reflecting pools. In 1903, William Drew, the youngest of the seven Washburn brothers, took advantage of a natural spring to build the pools, under the cover of several massive pine trees. In the shelter of the forest, learn about how the landscape has changed in 200 years as you explore the trees, flowers, and living creatures on, above, and possibly below the trail. Wear sturdy footwear and prepare for a slight incline on the return trip. Children must be accompanied by an adult. Led by Anthony Underwood, a Maine Master Naturalist.



An afternoon of joyful singing with Kiersten Curtis with guest musicians Logan K. MacDonald & Ida Santos



Please join us for this free concert
 Sunday, June 24th at 2pm at Waterville First Baptist Church
 1 Park Street Waterville, Maine
 to celebrate the bicentennial of our congregation
 in Waterville's oldest public building
 Reception to follow



**"The Golden Age is before us, not behind us"
William Shakespeare**



**Whether you are 55 or 85
 Our mission is the same...
 Grow and protect your family's
 treasure for your "Golden Age"**

129 Silver St, Waterville, ME Phone: (207) 873-2200
www.goldenpondwealth.com

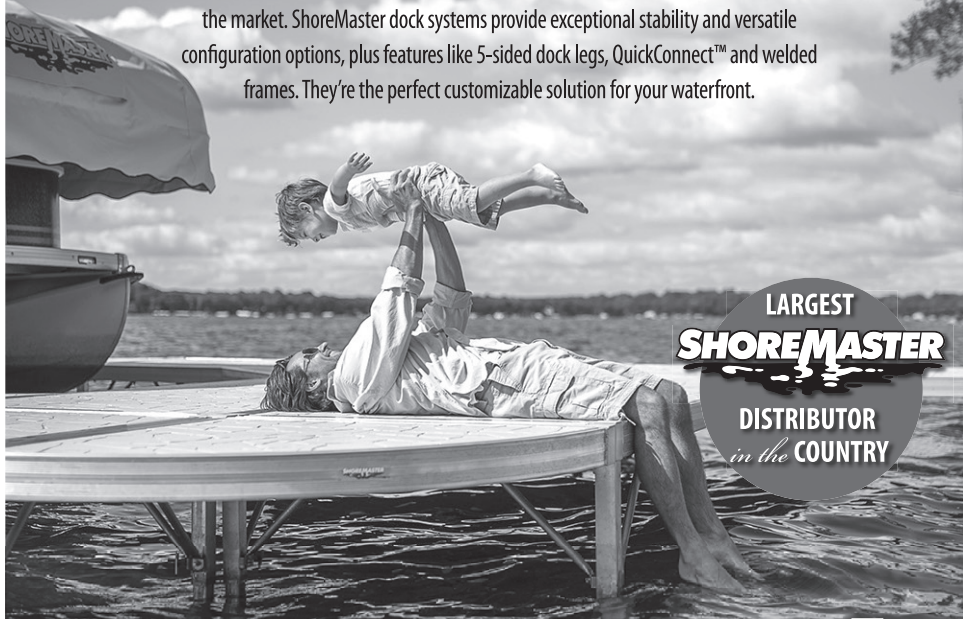
Securities offered through LPL Financial, Member FINRA/SIPC



ALUMINUM DOCKS, BOAT LIFTS AND SWIM RAFTS | COMPLETE INSTALLATION SERVICE AVAILABLE
15 YEAR WARRANTY | FACTORY DIRECT PRICING | FREE DELIVERY*

EXCEPTIONAL STABILITY & VERSATILE CONFIGURATION

Create your perfect waters edge experience with the most user-friendly dock systems on the market. ShoreMaster dock systems provide exceptional stability and versatile configuration options, plus features like 5-sided dock legs, QuickConnect™ and welded frames. They're the perfect customizable solution for your waterfront.



LARGEST
SHOREMASTER
DISTRIBUTOR
in the COUNTRY

Hammond Lumber Company

Toll-free 1-866-HAMMOND | hammondlumber.com

AUBURN • BANGOR • BELGRADE • BOOTHBAY HARBOR • BRUNSWICK • DAMARISCOTTA
FAIRFIELD • FARMINGTON • GREENVILLE • PEMAQUID • PORTLAND • SKOWHEGAN • WILTON

*In our normal delivery areas. Delivery charge may be applied to outlying areas.

Lakepoint

REAL ESTATE
(207) 495-3700
221 Main Street, Belgrade Lakes



Close to Downtown Belgrade lakes with water access to Long Pond. One Bedroom and 1 Bathroom.
MLS# 1325924 \$199,000



Messalonskee Lake Custom built log home featuring, 3 bedrooms, three baths, plus a master suite with walk in closet, bonus room, private deck.
MLS# 1348788 \$729,000



Gorgeous estate with 3 bedroom, 2.5 bath main house and 2 bedroom, 1 bath guest house over 2 car heated garage! Sandy frontage on Great Pond.
MLS# 1310458 \$779,000



With cathedral ceilings, private bathroom with each bedroom, large closets, butcher block counter top and a newly redone back porch for entertaining.
MLS# 1348512 \$250,000



Beautiful property in Belgrade with a 30X30 heated garage w/ 2 bedrooms, 2 bathrooms, and 2 acres.
MLS#1321071 \$249,900



True Maine living in a beautiful Log home with plenty of privacy. Perfect for the hunter, fisherman, or outdoors person in your life.
MLS#1350007 \$230,000

FEATURED LISTING



Year round Long Pond home with fabulous wrap around screened porch. Spend your leisure time relaxing and listening to nature on the comfortable porch. Features 3 bedrooms, 2 bathrooms and a huge walk in pantry all on one floor in a very secluded setting. Nicely landscaped, this property has earned the Lake Smart Award for lake-friendly practices.

MLS: 1348332
\$359,900

www.belgradelakepoint.com



GAIL RIZZO



PAT DONAHUE



STEPHANIE YEATON



REBECCA DUNBAR



JOELLE PELLITTER



TERRY SPENCER



JORDAN STOLT



BRENT KRIZO

GRANITE HILL ESTATES

Part of:
MaineGeneral Health



Retire your way. Today!
In a community that cares.

Now's the time to join the family at **Granite Hill Estates**, central Maine's premiere continuing care retirement community and part of **MaineGeneral Health**. Call 207-626-7786 or toll free 1-888-321-1119 today schedule a tour. Offering an impressive menu of amenities:

- Spacious cottage homes and apartments
- Elegant full-service dining plan
- Maintenance and housekeeping services
- Scheduled courtesy transportation
- Social, cultural and educational programs
- Indoor swimming pool complete with hot tub
- Cozy reading room, library and bank
- Attractive game, billiard, and meeting rooms
- Fitness center with an on-site fitness coordinator
- Convenient hair salon, massage spa and meditation room
- Wooded walking trails throughout our 135 acre campus



Holleran National Senior Living Survey



email: info@granitehillestates.com

60 Balsam Drive, Hallowell, ME 04347



207-626-7786

1-888-321-1119

granitehillestates.com

Can't find your dream home? Then build it.



Apply now and start building today!

Build your dream home with a single-close construction loan from Skowhegan Savings. Lock in your mortgage rate today with up to 95% financing, low closing costs and pay interest only for up to 12 months.*

Visit us at
SkowheganSavings.com
or call 800.303.9511

*Subject to credit approval.



Skowhegan Savings FDIC

Straight Talk. Fair Deals.