

# Summertime in the Belgrades



... Serving the Central Maine Lakes & Kennebec River Corridor

—A Cider Mill Press Publication—

VOLUME 20, NUMBER 1

## Summer 2018: Time to Celebrate

by Esther J. Perne



**L**ive here? Summer is especially welcome. Vacation here? What a grand season to return to. Visit here? Discover the find of a lifetime.

All summers in this beautiful region are wonderful, welcome, something to celebrate.

But the summer of 2018? Bring it on.

Following a winter of record length and bitter strength and a spring that wouldn't be, the Belgrades and all of Maine are ready for the greening of the land, the climbing heat, even the bugs.

The region is ready for seasonal businesses to open, tourists to stroll the sidewalks and water-

ways to sparkle in the distance around almost every bend in the road.

The region is ready for a good old-fashioned summer, whether it's sandals to work or bare feet in the water, ready for that first dip in the lake, that first tug on the fishing line, that first cook-

*Continued on page 2*

**Mid-Maine Marine Inc.**  
885 Kennedy Memorial Drive, Oakland, ME 04963  
1/2 Mile West of Exit 127 off I-95 • 1-800-649-2628  
[www.midmainmarine.com](http://www.midmainmarine.com)

**HARRIS**  
2018 PONTON BOATS IN STOCK VIEW INVENTORY ONLINE

**POWERED BY MERCURY**

Join us...and help protect our lakes!

**Belgrade Lakes Association**  
137 Main Street, Belgrade Lakes, Maine 04918  
207-512-5150 • [www.belgradelakesassociation.org](http://www.belgradelakesassociation.org)

**Hamlin's Marine**

290 West River Road, Waterville • 207-872-5660  
581 Main Road North, Hampden • 207-907-4385  
[www.hamlinmarine.com](http://www.hamlinmarine.com)

**YAMAHA**





Continued from page 1



Bitter winter!



Free summer meals for local children.



On the art trail.



Take a trip to the LL Bean store.

out, picnic or visit to a scenic height and all the other celebrations of summer.

This is the season when dressing less is best, when eating outdoors is awesome, when it's fun to sit in the sun or jump in the water. It's also fun and easy to visit the area's historic and cultural sites, pack into crowded seasonal events and attractions, linger in parks and outdoor cafes, take part in all the free activities and presentations that the region provides or plan an awesome day trip to the coast, the mountains or Maine destinations yet

unfamiliar.

This is the season when for those who have work schedules as usual, with regular jobs or with seasonally long hours helping others enjoy summer, there is celebration, too, be it the occasional day or hour or break.

This is the season when there are moments to be taken to appreciate that living here is what guests to the area only get to dream ... and seasonally visit ... and celebrate.

Celebrate the summer of 2018: Bring it on.

## BELGRADE REGIONAL HEALTH CENTER

4 Clement Way, Belgrade, ME 04917 • 207.495.3323 • BelgradeCHC.org

*Your Family's Home for Health and Wellness*



### OUR SERVICES

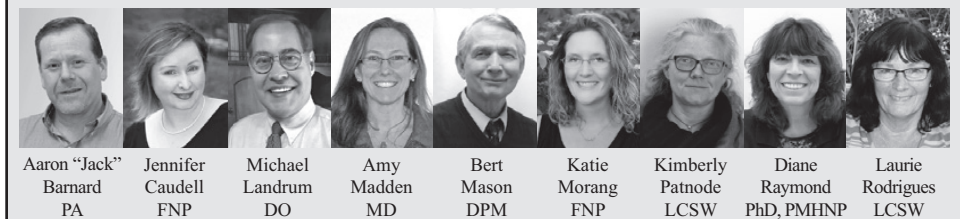
- Women's Health
- Men's Health
- Pediatric Services
- Counseling
- Osteopathic Manipulation
- Care Management
- Adult Psychiatric Medication Management
- Podiatry Services
- Joint Injections
- Referrals

### HOURS OF OPERATION

**Regular Office Hours**  
Monday through Friday  
7:30 a.m. - 4:30 a.m.

### Walk-In Hours (for current patients)

Monday through Friday  
8:00 a.m. - 9:00 a.m.



Aaron "Jack" Barnard PA	Jennifer Caudell FNP	Michael Landrum DO	Amy Madden MD	Bert Mason DPM	Katie Morang FNP	Kimberly Patnode LCSW	Diane Raymond PhD, PMHNP	Laurie Rodrigues LCSW
----------------------------	-------------------------	-----------------------	------------------	-------------------	---------------------	--------------------------	-----------------------------	--------------------------

We Accept All Insurances, MaineCare and offer Sliding Fee Scale

*Love* where you live



Custom built home, sunny open floorplan, cathedral ceilings, beautiful stone fireplace, gorgeous panoramic views just steps from the water.

\$679,000



500 Acres very close to Belgrade Lakes Village. Choose your building site- High land with Beautiful views from everywhere!

\$399,000

# LAKEHOME GROUP



## 207-495-2500

REAL ESTATE

75 Main Street, Belgrade Lakes ME 04918 • Lakehomegroup.com





## Table of Contents

2018: A Season To Celebrate..... 1-2

Greetings To Our Readers..... 3

Table of Contents..... 3

Belgrade's "The Luckiest Boy" Time To Remember, and Look Ahead..... 4

Civil War in Readfield Presentation..... 4

"Take It Outside" with Pete Kallin..... 5

Directory of Where to Go, What to Do, Town by Town..... 6-7

Dam Keeper's Report on the Belgrades Dams..... 7

Calendar of Events: Awesome Activities Start the Season..... 8-9

Kennebec Corridor Map: Along the Mighty River..... 9

Paddle With Pine Tree Camp: Solon to North Anson..... 9

Family-Friendly Fiber Frolic at Windsor Fairgrounds..... 9

Belgrades Watershed Map..... 10-11

Upcoming Events: Reasons to Stay, Reasons To Return..... 12

Conservation Too by the Kennebec Soil and Water Conservation District..... 13

Atlantic Salmon Federation's Fish Friends Program with Winslow Students..... 13

Accommodations: Lake Region Overnights..... 14

Notebook: Announcements, Notes, News..... 14

Dining Suggestions: Fine Food to Picnic Fare..... 15

Waterville's ACAT Theatre: Moonlight and Magnolias..... 15

Business Directory: Guide to the Area's Best Businesses and Services ..... 16-17

Music At First in Waterville..... 17

Association Directory: A Group For Every Reason ..... 17

The Great War 100 Years Ago: Book Review by Martha Barkley..... 18

The Great War Exhibit, Maine State Museum, Augusta..... 18

Hinckley: LC Bates Exhibit: Birds in Urban and Natural Landscapes ..... 19

## Welcome Letter

### Dear Readers:

Welcome to the summer of 2018, to the season of warmth and renewal, to the time of year when outdoor events abound, when relaxation is in the air and when nature provides a full array of adventure and discovery, of beauty and peacefulness.

For Summertime in the Belgrades, summer means greeting returnees to the world they love, encouraging year-rounders to take part in the vacation side of this beautiful, bountiful region, delivering the paper in Waterville, Augusta, Skowhegan, Farmington, all the Belgrades, all the Kennebec corridor and river towns in central Maine and wherever we have advertisers, and enjoying some of the many opportunities for theater, art, music, festivals, public suppers, water sports, scenic drives and views and back-to-nature opportunities featured in our pages.

With each new season (this is our 27th) there will be change: new faces, new names, new construction, new places to eat and new first annual events. But there is changelessness, too: the same scents and sounds of summer since time way gone by, the same delighted expressions of children splashing in the water or eating ice cream or cheering on a parade, the same appreciation of adults from all over the world who vacation, visit or pass through this area and recognize that here is a special place.

It is changelessness that Summertime in the Belgrades will refreshingly provide throughout the season of 2018. The same popular columnists are returning: Pete Kallin taking it outside and encouraging everyone else to do the same, Belgrade's luckiest boy - Rod Johnson - sharing the town's history; Dale Finseth and team at the Kennebec County Soil and Water Conservation District presenting conservation wisdom; Martha Barkley reviewing a potpourri of Maine books; Dick Greenan dam reports; and feedback from groups and organizations working as they have for decades toward goals of protected waters and preserved lands.

Summertime's Calendar of Events will again reflect the continuity of annual occasions and outings, the Notebook will be filled with actions and visions that have endured and each issue will promote advertisers who have a long history (as long as 27 years) of supporting us. - for which we thank them.

Welcome to the summer of 2018. Take a hike, go jump in a lake, listen to an outdoor concert and enjoy reading Summertime in the Belgrade.

The team: Esther, Corey, Ethan  
Michael and Gregor



*Summertime in the Belgrades*

--A Cider Mill Press Publication--  
PO Box 290, Belgrade Lakes, ME 04918  
Editor: Esther J. Perne, 207-495-3777 • ebelnews@earthlink.net  
Layout Design: Michael Breault, 207-578-0226 • mo.breault@gmail.com  
Webmaster : Gregor Smith • gregor@roadrunner.com  
[www.sumbelnews.com](http://www.sumbelnews.com)

This publication is copyrighted ©MMXVIII, Cider Mill Press Publications, All Rights Reserved.

**CAYER SECURITY**

RESIDENTIAL • COMMERCIAL • FINANCIAL

- Burglary & Fire Alarms
- Alarm Monitoring
- Access Control
- Video Surveillance

VOTED Greater Waterville's BEST SECURITY COMPANY 5 Years Running 2013 - 2017

**453-9177**  
[www.cayersecurity.com](http://www.cayersecurity.com)

NORTH BAY ESTATES  
ROUTE 8 • NORTH BELGRADE

~ FOR SALE ~

**Custom Built Homes**  
by *Craig's Carpentry*  
1 & 2 acre lots  
with lake views from  
Great Pond overlook  
Craig Alexander  
cell (207) 649-3749 • crgsnbe@yahoo.com

**Belgrade Regional Health Center**  
*Your family's home for health & wellness*

Aaron "Jack" Barnard, PA  
Call for an appointment with Jack today!

207.495.3323 • BelgradeCHC.org





## —The Luckiest Boy—

## Time to Remember, Time to Look Ahead

by Rod Johnson

Welcome All. Here we are again, meeting for the first time in 2018. Thanks to Esther Perne and the The Summertime news crew, each May and June we gather and catch up—with renewed hope and excitement that another summer is nearly upon us.

Speaking of winter, let's chat briefly about what a brut it was for all that stayed here. Like many, I'm a coward and ran away to Florida, but saw all the photos and heard the chatter about how tough it was at times. No sooner had the area semi-recovered from the late October storm that devastated much of the state of Maine, when the temperatures plummeted to some record setting low numbers. As people adjusted to the severity of the cold temperatures, it warmed up slightly and dumped snow storm after snow-storm to set more records on given dates. All in all, with the longevity of winter thrown in for good measure, people were TIRED of winter when March rolled around.


Happily, spring has sprung and summer is on the forefront. How do we know all this? Let us ponder it and list some of the signs. We cannot ignore the forsythia's bright yellow flowers as we come up the Maine turnpike, or the crocuses that have popped up around the foundation of the houses. Both are early bloomers, and as dependable as old friends. Memorial Day weekend is not far off and is the first major drawing card. It signifies a beginning, an opening time, and shoots us out of the gate into full-fledged summer.

As we move ahead through June and look forward to family and friends visiting, the July 4th fireworks and boat parades, let us thank our lucky stars. We have the beautiful State of Maine and in particular, the gorgeous Belgrades and surrounding area in which to enjoy some time. Let us also thank all the people who, in various organizations, work their tails off and donate money to preserve what is here.



Things are not without change. This summer, changes in Belgrade Lakes village will be extremely evident as the rebuilding of the road and sidewalks is beginning. The initial phases will no doubt shock us, as part of the project involves taking down most all of the elderly maples that line Main Street. Each of us must come to terms with the new look that will emerge as the final phases are completed in 2019/2020—and be patient during the construction period.

In closing this "remembrance and looking ahead" story, it is appropriate to give a salute to those Belgrade dwellers who passed away during 2017 and early 2018—and welcome the newborns that have taken their places here among us.

Having just read E.B. White's *Once More To The Lake*, I personally am excited and elated that another spring has sprung. Welcome All. 



winery & distillery

**Locally Produced**

**Internationally Recognized**



#### Absinthe Verte Awards:

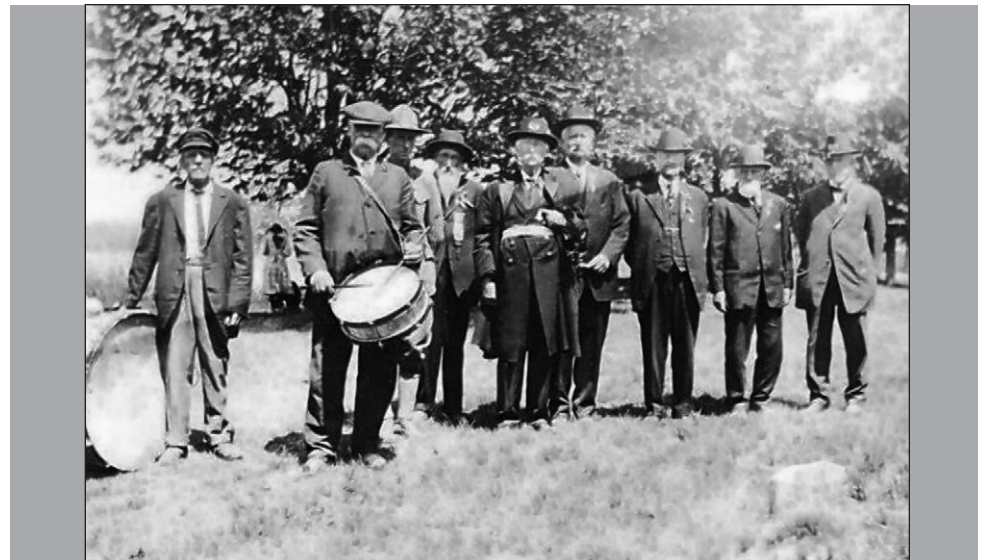
- Downeast Magazine Best of Maine 2016
- Silver Medal, NY International Spirits Competition 2018
- Bronze Medal, NY International Spirits Competition 2015

#### Limoncello Award

- Bronze Medal, SFIC 2018

152 Fairfield St, Oakland, ME 04963 | 207-465-3007  
www.treespiritsofmaine.com


## Civil War in Readfield Presentation Slated for May 30th



These Civil War veterans were photographed as they participated in Readfield's Memorial Day parade about 1920. Those identified left to right: ?, ?, ?, Cinklar "Zink" Kimball, John M. Williams, William Hackett, George Russell, George Armstrong and William Laughton.

"Some Readfield heroes of the Civil War" will be presented by Dale Potter-Clark at Maranacook Adult & Community Education on May 30th at 6:30pm.

Between 1861 and 1865 the town of Readfield, population 1,500 at the time, bid farewell to one-hundred sixty men as they left to serve in the Civil War. Twenty-seven of them were killed or wounded. In this presentation you will hear some of their stories and also about some of the War's impact on Readfield. What better time to honor them in this way than during Memorial Day week?

Registration fee is \$12.50. To register contact Maranacook Adult and Community Education Phone: 207-685-4923 x 1065 or online using a debit or credit card via <http://maranacook.maineadulted.org>. FMI about other historical presentations visit [www.readfieldhistorywalks.blogspot.com](http://www.readfieldhistorywalks.blogspot.com) or call Potter-Clark at (207) 441-9184. Proceeds will help fund a historical site markers project in Readfield 





## — Take It Outside —

## Welcome Back to Summer

by Pete Kallin

Greetings to the greater Belgrade Lakes Community and welcome back summer residents and visitors!

When I was growing up and there was any kind of ruckus in the house, which was pretty common with six kids, my mother would tell us to, "Take it outside!" We would then head out to the woods behind the house to find something to do. My mother was a wise woman. Fifty years before Richard Louv wrote *Last Child in the Woods* in 2008, she had an innate understanding of "Nature Deficit Disorder" and knew that direct exposure to nature is essential for a child's healthy physical and emotional development. Louv later proved that kids who spend a lot of time outside are healthier, have longer attention spans, and are less likely to suffer from depression or childhood obesity. If you haven't read Louv's book, you should. I hope this column will inspire you to take advantage of all the outdoor recreation opportunities in our area and especially about the importance of getting youngsters outside and interacting with Mother Nature. Mother Nature is an amazing teacher and we can all learn from her.

Like last year, this winter seemed to come and go, with snow followed by melting, rain, and then more snow and cold. The ice fishing was tough due to the cold and wind but the skiing was good in protected areas. The ice went out in the fourth week of April, more like the old days rather than recent times. The fishing has been good, especially for bass, pike, and trout. Once the surface water hit

*Continued on page 12...*



Amanda Simpson of Sidney snowshoeing with her kids at French Mountain on the 1st Day of Spring.



22" salmon showing wound from pike near anal fin.

**FOR SALE**  
**HOANG REALTY**  
**623-0623**



Amy Gray:  
478-8921



Dave Barnard:  
441-8486



Heidi Libby:  
603-275-1580



Hoa Hoang:  
485-1485



George & Erica O'Connor:  
485-0277



Gail Dostie:  
242-2017



Heidi Witham:  
465-5764

### A cottage-character gem on Sheepscot Lake

**PALERMO** – The spring canopy of leaves has spread out, the waters of pristine, 1,274-acre Sheepscot Lake are warming fast, and the dock and float are ready to go in. The peak months for enjoying this cottage, its half-acre lot, and its 121 feet of private waterfront are just beginning.

Quality-built in 2000, the 1,274-square-foot property combines classic Maine lakefront character with the low-maintenance, ease-of-living quality of a contemporary house. It is seasonal, but heated by propane via a handsome stove, and could be modified to become year-round.

Tongue-and-groove, paneled ceilings and pine floors lend a pleasantly rustic feel to the interior. The enclosed, screened porch – ideal for relaxing and for dining, and of course for sleeping on summer nights – not only expands living space, it also provides sweet views out over the lake. East-facing, the porch also catches the sunrise.

The main level is open-concept, and has a generous living room area; a well-appointed, dine-in kitchen that features a gas range; and a full bath with tub. Upstairs are the cathedral-ceiling master bedroom, and a pair of smaller rooms that share a doorway, but serve as two bedrooms, if you like.

A large garden shed for storing kayaks, yard implements and other gear sits to one side of the brick walkway. Stairs lead down to

the shore, where the dock and float will delight swimmers, boaters, and fishermen.

The fishing – landlocked salmon, lake trout, brook trout, and both largemouth and smallmouth bass – is excellent, and the water quality superb, thanks in large part to the stewardship of the Sheepscot Lake Association and its low-impact-development "lake



smart" effort.

The property at 309 Bald Head Island West, Palermo, is listed at \$259,000 by Hoa Hoang of Hoang Realty. (The convenient location, just off U.S. Route 3 only a half-hour from Augusta, is actually a peninsula, not an island.)



Please contact Hoa at 485-1485 or at [realtor2074851485@gmail.com](mailto:realtor2074851485@gmail.com).

Hoa Hoang, Broker/Owner at Hoang Realty in Augusta, has been selling real estate for 15 years. Hoang Realty will celebrate its fifth anniversary in August.



Karen Ramsay:  
441-8186



Lisa Hicks:  
592-5374



Merline Douglas:  
485-0138



Pam Armour:  
314-7445



Brenda Adler: 215-5599  
Melody Main: 485-2991



Remy Henry:  
242-0450



Sarah Allarie:  
242-9842





## Calendar Directory

### TOWN BY TOWN...

GREAT VISITS, AWESOME OUTINGS – ART, MUSIC, CULTURE, HISTORY, RECREATION, FARMERS' MARKETS, TRAILS, SCENIC SITES, AND MORE...

#### AUGUSTA

- **Viles Arboretum**, 224 acres with 6 miles of year round walking trails, including art and sculpture trail, open dawn to dusk, Visitor Center open Monday-Friday, 9 am-4 pm, admission free, 626-7989, [www.vilesarboretum.org](http://www.vilesarboretum.org), 153 Hospital Street
- **Farmers' Market at the Arboretum**, indoors, Friday 1-5 pm
- **Art in the Capitol**, Maine Arts Commission monthly self-guided exhibits in State House hallways (Mon-Fri 8 am-5 pm), Blaine House (call for times), and Maine Arts Commission Office (8:30am-4:30 pm), 287-6746, [mainearts.maine.gov](http://mainearts.maine.gov)
- **Children's Discovery Museum**, CDM, hands-on displays, activities, Tuesday-Thursday 10 am-4 pm, Friday-Saturday 10 am-5 pm, Sunday 11 am-4 pm, admission, 622-2209, [www.childrensdiscoverymuseum.org](http://www.childrensdiscoverymuseum.org), 171 Capitol Street
- **Danforth Gallery**, Jewett Hall, art exhibits, UMA-1234, [www.uma.edu](http://www.uma.edu)
- **Governor's Mansion**, 1830 Blaine House, Tuesday-Thursday 2-4 pm, 287-2121, [www.blainehouse.org](http://www.blainehouse.org), State Street
- **Holocaust and Human Rights Center of Maine**, Michael Klahr Center, Monday-Friday 8 am-4 pm, 621-3530, [www.hhrc.uma.edu](http://www.hhrc.uma.edu), University of Maine at Augusta, off Route 27
- **Kennebec Historical Society**, Wednesday-Friday 10 am-2 pm, 622-7718, [www.kennebechistorical.org](http://www.kennebechistorical.org), 107 Winthrop Street
- **Maine State Museum**, Tuesday-Friday 9 am-5 pm, Saturday 10 am-4 pm, \$2 adults, \$1 ages 6-18, 287-2301, [www.maine-statemuseum.org](http://www.maine-statemuseum.org)
- **Maine State House**, Hall of Flags, House and Senate Rooms, Klir Beck dioramas, Monday-Friday 8 am-5 pm, book tours at Maine State Museum, walk-ins welcome 9 am-1 pm, 287-5600, [www.maine.gov](http://www.maine.gov), State Street
- **Maine State Library**, Monday-Saturday opens 9 am, 287-5600, [www.maine.gov/msl/](http://www.maine.gov/msl/), State Street
- **Museum in the Streets**, walking/history tour, [www.augusta-maine.gov](http://www.augusta-maine.gov), Water Street/downtown.
- **Old Fort Western**, 1754 fort, house, store, 1-4 pm daily, admission \$6, 4-14 years \$4, 626-2385, [www.oldfortwestern.org](http://www.oldfortwestern.org), Cony Street
- **Riverfront Park**, boat launch, Greenway Trail, playground, eastside Kennebec River
- **Kennebec River Rail Trailhead**, Maine State Housing Authority parking lot, 623-8162, [www.krrt.org](http://www.krrt.org), Water Street
- **University of Maine at Augusta Fitness Trail**, 2 miles of wooded trails, near Civic Center, Route 27
- **Farmers' Market at Mill Park**, Tuesday 2-6 pm, 626-2305, [www.farmersmarketmillpark.org/](http://www.farmersmarketmillpark.org/), North Water Street
- **Farmers' Market at Turnpike Mall**, 549-5112, Wednesday and Saturday 10 am-1 pm, Western Avenue

#### BELGRADE LAKES

- **Belgrade Lakes Market**, 320-8303, [careybor@yahoo.com](mailto:careybor@yahoo.com), Sunday 8 am-1 pm, Main Street
- **Great Pond Mailboat**, 592-1537, Monday-Saturday 10 am,

Post Office, Main St.

- **The Belgrade Community Center for All Seasons**, pool and lakefront, gym, playground, picnic area, rec programs, 495-3481, [www.belgrademaine.com](http://www.belgrademaine.com), 1 Center Drive
- **Union Church Coffee House**, check for schedule, 7:30 pm, \$5, 495-3599, [www.unionchurchmaine.org](http://www.unionchurchmaine.org), Main Street
- **Belgrade Historical Society**, 495-2973, [belgradehistoricalsociety.org](http://belgradehistoricalsociety.org)
- **Belgrade Lakes Market**, Sun 8 am-1 pm, Main Street
- **Peninsula Park on Long Pond**, picnic tables, Main Street
- **Maine Lakes Resource Center**, 512-5150, [www.maine-lakes-resource-center.org](http://www.maine-lakes-resource-center.org), 137 Main Street

#### FAIRFIELD

- **Fairfield Historical Society**, 1890 Cotton-Smith History House, every Tuesday 9 am-12 noon and 1-4 pm and second Saturday of month, 453-2998, [www.fairfieldmehistoricalociety.net](http://www.fairfieldmehistoricalociety.net), 42 High Street
- **Farmers' Market**, 948-5724, Wednesday 2-6 pm, Saturday 9:30 am-1:30 pm, Nazarene Church parking lot, 81 Main Street

#### FARMINGTON

- **Farmington Historical Society, Titcomb House Museum**, 778-4275, Wednesday and Saturday, 11 am-2 pm, July-August, [www.farmingtonhistory.org](http://www.farmingtonhistory.org), 118 Academy Street
- **Nordica Homestead Museum**, opera singer Lillian Nordica costumes, jewelry, mementos, 778-2042, Tuesday-Saturday 10 am-12 noon and 1-5 pm, Sunday 1-5 pm, [www.lillianordica.com](http://www.lillianordica.com), 116 Nordica Lane, Holley Road
- **Contra Dance**, 491-9928, [www.starleft.org](http://www.starleft.org) 2nd Saturday of the month, all welcome, 6:30-7:30 pm family dance, 8-11 pm regular dance, admission, Grange Hall, Bridge Street, Route 43, West Farmington
- **University of Maine campus and Arboretum**, four walking tours with informal guide pamphlet to campus trees, 581-1541, [www.umaine.edu/arboretum/](http://www.umaine.edu/arboretum/), downtown
- **Farmers' Market**, 778-6602, Friday 9 am-2 pm, Better Living Center parking lot, Front Street; Saturday 8 am-12 noon, Main Street
- **Meetinghouse Park and Gazebo**, weekly concerts throughout summer, downtown
- **Fairgrounds**, events throughout summer, Franklin County Fair in September, High Street

#### GARDINER

- **Artdogs and Circling the Square Fine Art Press**, Friday 1-5 pm, Saturday 10 am-4 pm, 582-6600, [www.theartdogs.com](http://www.theartdogs.com), 275-277 Water Street
- **Johnson Hall Performing Arts Center**, 582-7144, [www.johnsonhall.org](http://www.johnsonhall.org) 280 Water Street
- **Monkitree**, art exhibits, 512-4679, [www.monkitree.com](http://www.monkitree.com), Tuesday-Friday 10 am-6 pm, Saturday 12-6 pm, 263 Water Street
- **SpinOff Studio**, 588-7297, [spinoffstudio.org](http://spinoffstudio.org), Monday-Friday 8:30 am-4:30 pm, 405 Water Street
- **Farmers' Market**, 512-8022, [www.gardinerfarmersmarket.org](http://www.gardinerfarmersmarket.org), Wednesday 2-6 pm, rain or shine, The Common
- **Kennebec River Rail Trail**, 623-8162, [www.krrt.org](http://www.krrt.org), access near Gardiner/Randolph Bridge, 6.5 miles to Augusta
- **Waterfront Park**, picnicking, events throughout summer, Kennebec River

#### GREENE

- **Araxine Wilkins Sawyer Memorial**, free entertainment programs, monthly - Friday 2 and 7 pm, 946-5311, [www.sawyer-foundation.com](http://www.sawyer-foundation.com), 371 Sawyer Road, off Route 202

#### HALLOWELL

- **Harlow Gallery**, Kennebec Valley Art Association, 622-3813, [www.harlowgallery.org](http://www.harlowgallery.org) Wed- Sat, 12-6 pm, 160 Water Street
- **Gaslight Theater**, 626-3698, [www.gaslighttheater.org](http://www.gaslighttheater.org) City Hall, 1 Winthrop Street
- **Museum in the Streets**, history/walking tour, [www.historichallowell.org](http://www.historichallowell.org), downtown
- **Farmers' Market**, 622-1350, Sun 3-6 pm, Water Street
- **Vaughn Woods and Homestead**, 166 acre park/trails/homestead, Middle Street
- **Kennebec River Rail Trail**, [www.krrt.org](http://www.krrt.org), to Augusta, Farmingdale/Gardiner, Water Street
- **Waterfront Park**, deck/walkway on Kennebec River, North Water Street

#### HINCKLEY

- **L.C. Bates Museum at Good Will-Hinckley School**, early 20th century natural history and cultural exhibits, nature trails and camps, adults \$3, up to 17 years \$1, 238-4250, [www.gwh.org](http://www.gwh.org) Wednesday-Saturday 10 am-4:30 pm, Sunday 1-4:30 pm, Route 201

#### KINGFIELD

- **Ski Museum of Maine**, 265-2023, [www.skimusuemofmaine.org](http://www.skimusuemofmaine.org), 256 Main Street
- **Stanley Museum**, 265-2729, [www.stanleymuseum.org](http://www.stanleymuseum.org), memorabilia/displays on photographs, violins and Stanley Steamers, Tuesday-Sunday 1-4 pm, 40 School Street

#### LIVERMORE

- **Washburn-Norlands Living History Center**, 18th-19th century mansion/farmstead/schoolhouse, library, chapel, 897-4366, [www.norlands.org](http://www.norlands.org), admission, living history tours Tuesday and Thursday 1-4 pm, 290 Norlands Road

#### MADISON

- **Lakewood Theater**, Maine's Summer Theater, Young Performers Camp, 474-7176, [www.lakewoodtheater.org](http://www.lakewoodtheater.org), Route 201
- **Skowhegan School of Painting and Sculpture**, 474-9345, [www.skowheganart.org](http://www.skowheganart.org), summer evening artists lecture series, East Madison Road

#### MONMOUTH


- **Monmouth Museum**, local and regional Maine history, Wednesday-Sunday 1-4 pm, 933-2287, [www.monmouthmuseum-inc.org](http://www.monmouthmuseum-inc.org), 751 Main Street
- **The Theater At Monmouth**, The Shakespeare Theater of Maine, Cumston Hall, 933-9999, [www.theateratmonmouth.org](http://www.theateratmonmouth.org), Main Street

#### MOUNT VERNON

- **D.E.W Animal Kingdom**, Zoo, 293-2837, 918 Pond Rd, Route 41

#### NEW PORTLAND

- **Nowetah's American Indian Museum and Craft Shop**, 628-4981, [www.nowetahs.webs.com/](http://www.nowetahs.webs.com/), daily 10 am-5 pm, free,



**THAYER ENGINEERING CO.**  
Land Surveyors  
Civil Engineers  
Planners

**Elliot B. Thayer, PLS, PE**  
**Andrew Dunbar, PLS, LPF, LSE**  
RESIDENTIAL & COMMERCIAL  
SITE DESIGN  
STATE & LOCAL  
PERMIT APPLICATIONS  
PREPARED & PRESENTED

17 Hasson Street  
Farmingdale, ME 04344  
582-7762  
[www.thayereng.com](http://www.thayereng.com)



**MOSQUITO BANDITOS**  
207-613-5656

Protect your children and pets from:  
Zika, West Nile Virus, Encephalitis, Heart Worms  
Anaplasmosis, Lyme Disease, PowassanVirus

ENVIRO FRIENDLY TICK, BLACK FLY & MOSQUITO CONTROL  
[www.mosquitobanditos-maine.com](http://www.mosquitobanditos-maine.com)



**GENERATORS of MAINE INC.**  
SALES • SERVICE • INSTALLATION  
[www.generatorsofmaine.com](http://www.generatorsofmaine.com) 207-495-2285

**KOHLER**  
IN POWER. SINCE 1920.

Platinum Dealer





628-4981, 2 Colegrove Road, Route 27

- **Wire Bridge**, 1864, probably only wire suspension bridge in U.S., off Route 27

**NEW SHARON**

- **Farmers' Market**, Saturday 9 am-1 pm, Douin's Market, 491-9025, 150 Mercer Road, Routes 2/27
- **New Sharon Historical Society**, Saturday 1-3, 778-4167, Routes 2/27

**NORRIDGEWOCK**

- **Norridgewock Historical Society Museum**, 1838 building, Saturday 10 am-1 pm, 634-5032, [www.norridgewockmuseum.com](http://www.norridgewockmuseum.com), Mercer Road, Route 2
- **Oosoola Park**, picnic area, great playground, boat launch, on Kennebec River, Route 8

**OAKLAND**

- **Macartney House Museum, Oakland Area Historical Society**, 465-7549, Wednesday 1:30-4:30 pm, 1815 home with antique furnishings and Oakland artifacts, 25 Main Street
- **Town Parks**, playground, picnic tables, swimming area, boat launch area, Belgrade Road on Lake Messalonskee and McGrath Pond Road on McGrath Lake
- **Farmer's Market**, Friday 2-6 pm, 465-3094, Pine Acres Parking Lot, 895 Kennedy Memorial Drive

**READFIELD**

- **Readfield Historical Society and Museum** in 1853 school-house, 685-4662, [www.readfieldhistorical.org](http://www.readfieldhistorical.org), Thursday and Saturday 10 am-2 pm or by appointment, Route 17, Readfield Depot

**ROME**

- **Mt. Philip Grange**, suppers 3rd Sat of month, 4:30-6 pm, all you can eat beans, cornbread, rolls, chop suey, pies, Routes 135/225
- **Trails**: Mount Philip, Route 225; The Mountain, Route 27; French's Mountain and Kennebec Highlands, Watson Pond Road; for information call 495-6039 or visit [www.belgradelakes.org](http://www.belgradelakes.org); maps available at BRCA, 137 Main Street, Belgrade Lakes

**SIDNEY**

- **New England Music Camp**, concerts free and open to the public, Bowl-in-the-Pines on Lake Messalonskee, 465-3025, [www.nemusiccamp.com](http://www.nemusiccamp.com), 8 Goldenrod Lane, Route 23
- **Sidney Historical Society**, 724-8032, [www.sidneyhistoricalociety.org](http://www.sidneyhistoricalociety.org), 2986 Middle Road
- **Silver Spur Riding Club**, horse shows, River Road, Route 104

**SKOWHEGAN**

- **Margaret Chase Smith Library**, residence, home, museum exhibits, 474-7133, [www.mcslibrary.org](http://www.mcslibrary.org), free, Monday-Friday, 10 am-4 pm, 54 Norridgewock Ave.
- **History House Museum**, 1800s local history and culture, heirloom gardens, free, Tuesday-Saturday, 10 am-4 pm, 474-6632, [www.skowheganhistoryhouse.org](http://www.skowheganhistoryhouse.org), 66 Elm Street
- **Fairgrounds**, weekly horse shows/competitions, free public events, covered arena, Skowhegan State Fair in August, 474-3621, Madison Avenue, Route 201
- **Farmers' Market**, Wednesday 3-6 pm, Saturday 9 am-1 pm,

weekly entertainment, 938-3906, Somerset Gristmill parking lot, downtown

**SMITHFIELD**

- **Fairview Grange**, 362-2791, Route 8
- **Smithfield History Society "The Groves House,"** 634-4392, 21 Lakeview Drive
- **Sunbeam Roller Rink**, 362-4951, 830 Village Rd, Route 8
- **Sunset Camps**, public beach, 362-2611, [www.sunsetcamps.com](http://www.sunsetcamps.com), 834 Village Road, Route 8

**UNITY**

- **Unity College Centre for the Performing Arts**, folk genre music, 568-3147, [www.unitymaine.org](http://www.unitymaine.org), 42 Depot Street

**WATERVILLE**

- **Aqua City Actor's Theatre (ACAT)**, 873-7000, [www.acattheatre.org](http://www.acattheatre.org). Waterville Opera House Studio Theater, Main Street
- **Museum in the Streets**, downtown history/walking tour, [www.themuseuminthestreets.com/waterville.htm](http://www.themuseuminthestreets.com/waterville.htm)
- **Head of Falls Park/Two Cent Bridge**, historic foot bridge over Kennebec River connecting Waterville and Winslow, Front Street
- **Common Street Arts**, 872-2787, [www.commonstreetarts.org](http://www.commonstreetarts.org), Wednesday-Friday 12-5 pm, Saturday 11 am-1 pm, 93 Main Street
- **Colby College Museum of Art**, 859-5600, [www.colby.edu/museum/](http://www.colby.edu/museum/) Tuesday-Saturday 10 am-5 pm, Sunday 12-5 pm, free admission, Colby College Campus, Mayflower Hill
- **Colby College Special Collections**, Miller Library, Monday-Friday 10 am-12 noon and 1-4 pm, free admission
- **Thomas College Art Gallery**, 180 West River Road
- **Waterville Historical Society and Redington Museum**, 1814 home and pharmacy, 872-9439, [www.redingtonmuseum.org](http://www.redingtonmuseum.org). Tuesday-Saturday tours at 10 and 11 am, 1 and 2 pm, 62 Silver Street
- **Waterville Opera House**, 873-7000, [www.operahouse.com](http://www.operahouse.com), 93 Main Street
- **Farmers' Market**, Thursday 2-6 pm, 680-2055, [www.watervillefarmersmarket.org](http://www.watervillefarmersmarket.org),

**WAYNE**

- **Farmers' Market**, 685-4657, <http://waynefarmersmarket.weebly.com>, Saturday 9 am-noon, Town Green, at the Mill Pond, Main Street

**WILTON**

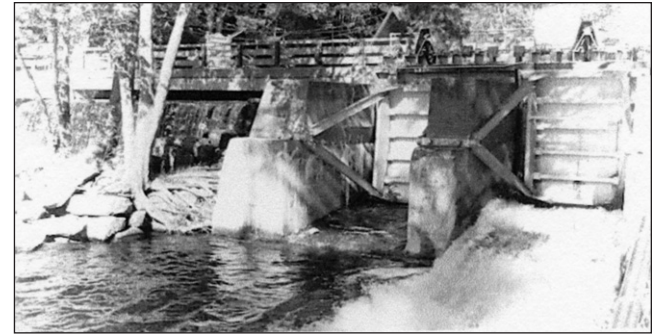
- **Wilton Farm & Home Museum**, 645-2091, 645-4578, [www.thewiltonfarmandhomemuseum.org](http://www.thewiltonfarmandhomemuseum.org), Saturday 1-4 pm or by appointment, 10 Canal Street

**WINSLOW**

- **Fort Halifax on the Kennebec River**, historic fort tower, park, Route 201

**WINTHROP**

- **Norcross Park**, playground, picnic site, boat launch on Maranacook Lake
- **Farmers' Market**, 446-2899, Tuesday and Saturday 9 am-1 pm, town office parking lot, 17 Highland Avenue



## The Dams Keeper Report

Welcome back to another Summertime in the Belgrades! The Dams Keeper Report is a weekly column to familiarize residents and visitors with not only the current water levels of our Belgrade Lakes, but the short and long term water level objectives. Based on long term forecasts and the whims of Mother Nature, your inter-local Dams Committee does try to maintain all of our lakes at full pond throughout the summer. With another dry summer in the forecast we are trying to keep our ponds at 3" above full pond for as long as we can, i.e. the water flowing over the spillways is 3" deep.

As of this writing, Tim at the village spillway dam has been very proactive allowing Great Pond to come up slowly from the winter draw-down while trying not to flood out Long Pond. The water flow is also ideal for fishing the spillways right now. As of this writing, Great Pond is now right at 3" below full pond and still coming up slowly. Long Pond at the Wings Mill Dam is 1.44" above full pond with all gates opened just 3" or so for a slight flow – an ideal balance for the fisherman, boaters, those still putting in their docks and, more importantly, our nesting feathered friends.

Welcome Home!  
Dick

Dick Greenan  
Secretary, Belgrade Lakes Watershed Dams Committee



Pete Kallin of Maine Lakes Society and 7 Lakes Alliance demonstrates water conservation using Maine Lakes Resource Center's driveway; permeable pavers vs. tar with Mrs. Stone's kindergarten class. Go to page 13 for more.

**J & M Logging, Inc.**  
**Firewood**  
622-6353  
Cut to order  
in lengths from 14" to 23"  
Green Certified Wood, Seasoned, & Ash  
Cut, Split & Delivered  
853 Civic Center Drive, Augusta, ME 04330

Changes?  
Updates?  
New contact information?  
Please let us know...  
mo.breault@gmail.com  
or ebelnews@earthlink.net

**BELGRADE BOAT STORAGE**  
**DARE TO COMPARE**  
Best Prices on Inside, Outside Boat Storage, Shrinkwrapping & Winterization  
Craig Pooler  
Cell: 207-314-3287 • Office: 207-495-3421  
Email: [belgradeboatstorage1@yahoo.com](mailto:belgradeboatstorage1@yahoo.com)  
[www.BelgradeBoatStorage.com](http://www.BelgradeBoatStorage.com)





## — Calendar —

**Wednesday 5/30 through Saturday 6/2** – “Women in Jeopardy,” 474-7176, Lakewood Theater, Route 201, Madison.

**Friday 6/1** - 10th Annual Healthy Aging Expo, 10 am-3 pm, informative, inspiring, fun, exhibits, healthy cooking tips, door prizes, lunch available \$6.50, 626-7777, Cohen Community Center, 22 Town Farm Road, Hallowell.

**Friday 6/1 - Sunday 6/1** - "Moonlight & Magnolias," an ACAT production, 873-7000, www.acattheatre.org, Studio 93 at The Center, Main Street, Waterville.

**Saturday 6/2 and Sunday 6/3** – 18th Annual Maine Fiber Frolic, great family outing, sheep, llamas, alpacas, goats, rabbits, fleece/fiber products, sheep and alpaca shearing, shows, drills, demonstrations, parades, children's area, educational presentations and much more; new - Sheep Shearing Contest; food concessions available, picnic tables, most exhibits under cover, 9 am-4 pm, adults \$5 (2-day pass \$8), seniors \$2, children under 12 free, www.fiberfrolic.com, Windsor Fairgrounds, Route 32, Windsor.

**Saturday 6/2** - Central Maine Garden Club Plant Sale, plants, food, garden items, jewelry, 8 am-noon, Oakland United Methodist Church, 20 West School Street, Oakland.

**Saturday 6/2** - Watercraft Safety Course, Maine Department of Inland Fisheries and Wildlife Boating Safety Course, includes free lunch, 9 am-3:30 pm, 985-7271, Fairview Grange, 342 Village Road, Route 8, Smithfield.

**Saturday 6/2** - Positively Poultry Club, 1st Annual Show and Auction, open to public, food, bake sale, 9 am, 547-4605, Skowhegan Fairgrounds, Madison

Avenue, Skowhegan.

**Saturday 6/2** – Paddle for Pine Tree Camp, paddle with a purpose by raising pledges to benefit campers with disabilities; 7-mile, two-hour paddle on the Kennebec River, Solon to North Anson, family-oriented, appropriate for all ages, skill levels and abilities, followed by a celebratory barbecue and free time, \$100 minimum pledge, register at www.pinetreesociety.org, 443-3341, to reserve a campsite 643-2324, 8 am registration for paddle, starts at 9:30 am at Evergreen Campground, Solon.

**Saturday 6/2** - Cruisin' For A Cure Car Show to benefit Maine Children's Cancer Program, many classes, People's Choice and Best of Show awards, rain or shine, 10 am-2 pm, registration 8 am \$10 entry fee, info@newdimensionsfcu, Faith Evangelical Free Church, 250 Kennedy Memorial Drive, Waterville.

**Saturday 6/2** – Celebrate National Trails Day, join a group or enjoy your own private walk, hike or bike, for information about planned programs contact local trails and recreation associations listed on page 17 in Summertime in the Belgrades.

**Saturday 6/2** - Exploring Nature Along the Trails, hike, kids activities, draw in a nature journal, 3 miles, 238-4250, L.C. Bates Museum, Route 201, Hinckley.

**Saturday 6/2** - National Trails Day Hike & Bike, walk, bike, 9 am, Alford Youth Center Kids Fun Run, 11 am Interactive Art and Science Walk at Quarry Road Trails, www.QuarryRoad.org, Waterville.

**Saturday 6/2** - Pat Colwell and the Soul Sensations, 7:30 pm, \$16, \$14 and \$5, 582-7144, www.johnsonhall.org, Johnson Hall, Water Street, Gardiner.

**Sunday 6/3** - Music At First, Augusta Symphony Orchestra, wind quartet, \$10, 3 pm, 872-8976, First Congregational

Church, 7 Eustis Parkway, Waterville.

**Monday 6/4** - Chamber Golf Classic, sponsored by the Mid-Maine Chamber of Commerce, raffles, food, beer, competitive contests, a chance to win \$1,000,000, 11 am shotgun start, 873-3315, Waterville Country Club, Kennedy Memorial Drive, Oakland.

**Tuesday 6/5** - Annual Garden Remembrance Ceremony, sponsored by the Hospice Volunteers of Somerset County, 5:30 pm, Bloomfield Garden Club, Coburn Park, Water Street, Skowhegan.

**Wednesday 6/6** - 19th Annual Charity Golf Tournament sponsored by the Kennebec Valley Board of Realtors to benefit LifeFlight of Maine, 12 noon shotgun start, team scramble, 622-1234, Natanis Golf Course, Webber Pond Road, Vassalboro.

**Thursday 6/7 and Friday 6/8** - Open Book Players - "James and the Giant Peach," 7:30 pm Thursday, 2 pm Friday, \$8 and \$5, Johnson Hall, Water Street, Gardiner.

**Thursday 6/7 through Sunday 6/10** - "Incorruptible," 474-7176, Lakewood Theater, Route 201, Madison.

**Friday 6/8 through Sunday 6/10** - Skowhegan Moose Festival, food, activities, drawing for moose permits on 6/9, 474-3621, Skowhegan Fairgrounds, Route 201, Madison Avenue, Skowhegan.

**Friday 6/8** - The Downeasters Chorus, men's a capella barbershop, 2 pm and 7 pm, free admission, 946-5311, Araxine Wilkins Sawyer Memorial, 371 Sawyer Road, Greene.

**Saturday 6/9** - Annual Yard Sale sponsored by the Friends of the Belgrade Public Library, 8 am-2 pm, 495-2101, Day's Real Estate, Route 27, Belgrade Lakes.

**Saturday 6/9** - Maine Mountain Chamber

Music Concert, sponsored by Arts Institute of Western Maine, 7:30 pm, 778-5074, \$15, free for 18 and under and students with ID, Nordica Auditorium, University of Maine, Farmington.

**Saturday 6/9** - Maine Event Comedy, for mature audiences, 21+, 7:30 pm, \$16 and \$14, 582-144, Johnson Hall, Water Street, Gardiner.

**Sunday 6/10** - Music At First, Reinos Ensemble, \$10, 3 pm, 872-8976, First Congregational Church, 7 Eustis Parkway, Waterville.

**Wednesday 6/13** - Whatever 2018 Family Festival begins, sponsored by the Kennebec Valley Chamber of Commerce, annual celebration, activities and free events for all ages, 623-4559, www.augustamaine.com, greater Augusta area.

**Wednesday 6/13** - Annual Appeal and Youth Talent Show, dinner and show featuring the skills and talents of Waterville area youth, Colby College Page Commons

**Wednesday 6/13 through Sunday 6/17** - Blistered Fingers Family Bluegrass Music Festival, a dozen great bands, giant tent, food, camping areas - free hot showers and indoor bathroom facilities, fun - children love bluegrass - great family event, children 16 and under free with adult, 873-6539, Fairgrounds, Litchfield.

**Wednesday 6/13 through Saturday 6/16** - "Home Sweet Home," 474-7176, Lakewood Summer Theater, Route 201, Madison.

**Thursday 6/14** - Composting, Learn How to Compost at Home, with Caragh Fitzgerald of the University of Maine Cooperative Extension, 6:30 pm, 626-2415, Community Meeting Room, Lithgow Public Library, 45 Winthrop Street, Augusta.



## MAINE-ly ELDER CARE

“Caring for the ones who cared for us”



In - Home Nursing • Personal Care Services • Homemakers  
• Emergency Response Systems • Transportation Services

STATE REGISTERED PERSONAL CARE  
AND HOMEMAKER AGENCY

465-3249

28 Center St., Oakland, Me 04963

www.Maine-lyElderCare.com

denise@Maine-lyElderCare.com

Expanded in 2014 to Better Serve Our Customers



**Belgrade Lakes  
Marine & Storage, Inc.**

**Winter Storage for Summer Vehicles**

Secure newer storage facilities accommodate boats on trailers, autos, and the largest RVs in 3 buildings totaling over 21,000 sq. ft. Electrical charging outlets are available. Reasonable rates for real protection from extreme winter storms and sun damage.

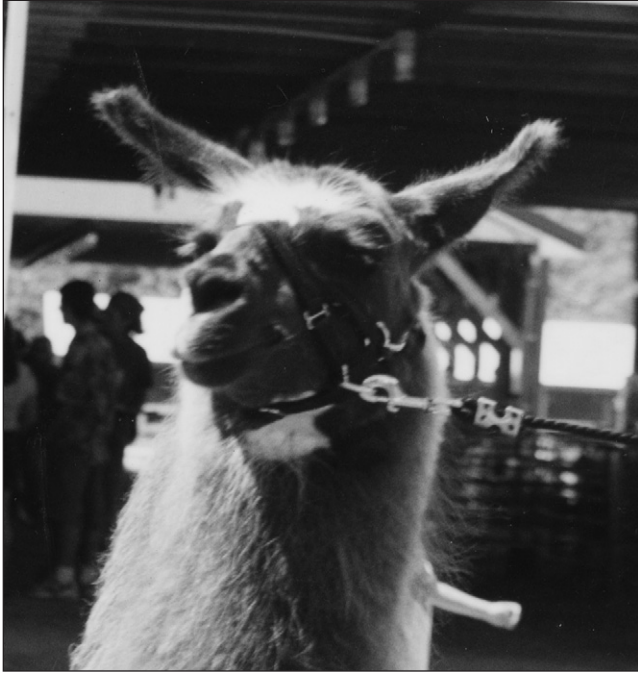
207-495-2378 • www.belgradelakesmarine.com

366 Augusta Road, Route 27, Belgrade, ME





## Take the Family to the Fiber Frolic

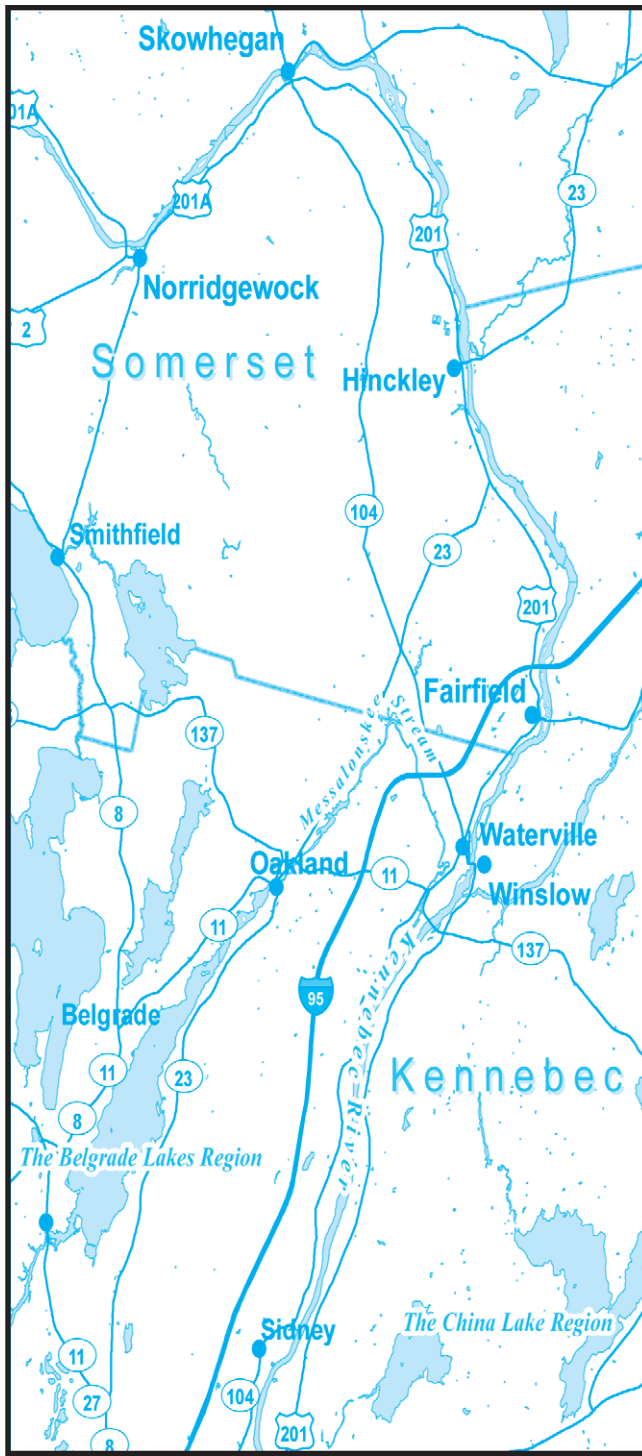


The 16th Annual Maine Fiber Frolic, featuring all the fiber-producing animals, food and fun will be held on Saturday and Sunday, June 2 and 3, 9 am-4 pm at the Windsor Fairgrounds.

It's a great show to get close to the sheep, goats, rabbits, llamas and alpacas that provide hair, wool and fur for warm clothing and cozy covers, learn how these animals are cared for and discover the many uses of fiber from hobby to business from fad to fashion.

The Fiber Frolic is a scenic destination to meet farm animals and their owners, to watch artisans at work and to wander among the barns, watch the competitions, shop the booths and relax at a

## Kennebec Corridor



favorite food concession.

Throughout the day, farmers and spinners and weavers engage in equipment discussions, serious workshops and peer networking while guests can admire the fiber products, attend shearing demos (new this year is a sheep shearing contest), enjoy musical and children's entertainment.

The parking easy and the price right. Adults are \$5 (2-day \$8), seniors \$2, children under 12 free. In case of rain, many of the events, the barns and the exhibit halls and many of the food concessions provide indoor diversion.

For a detailed program, workshop registration or vendor registration go to [www.fiberfrolic.com](http://www.fiberfrolic.com)

## 22nd Annual Paddle for Pine Tree Camp on June 2

Paddle down the might Kennebec River from Solon to Madison, raise money for Pine Tree Camp, join a like-minded group of all ages and have a lot of fun. On Saturday, June 2, the family-friendly 22nd Annual Paddle for Pine Tree Camp will feature a seven-mile scenic excursion that raises money to make possible for Maine children and adults with disabilities to attend an extraordinary, barrier-free summer camp in Rome, Maine.

Since 1945, the Pine Tree Camp has welcomed all who could benefit from its programming and proceeds from the paddle event will go directly

to the camper fund.

The two-hour paddle down the Kennebec River will start at 8 am at Evergreens Campground in Solon, a unique site on the route of Benedict Arnold's trek to Quebec, where Indians once camped and where ancient petroglyphs can be viewed, and will end at 1:30 pm in North Anson.

Teams of friends, family and coworkers are encouraged. A minimum of \$100 per registrant must be raised.

For more information or to register visit [www.pinetreesociety.org](http://www.pinetreesociety.org) or call 443-3341.

**QUALITY ANTIQUES**  
*New Merchandise Arriving Daily!*

Always Accepting Dealer Applications  
Quality Antique Dealers Apply!  
Contact- Deborah Stufflebeam  
Manager- FMI: 207-522-1977

10,000 Sq. Ft. Multi Dealer Emporium offering Quality Antiques to Mid-Century Modern Treasures.

Air Conditioned • Ample Parking  
Open Daily 10:00 a.m. - 5:00 p.m.

*In the iconic former Hathaway Shirt Factory*

10 Water Street  
Waterville, ME  
207-877-0250

**HATHAWAY MILL ANTIQUES**

[www.hathawaymillantiques.com](http://www.hathawaymillantiques.com)  
e-mail: [info@hathawaymillantiques.com](mailto:info@hathawaymillantiques.com)

NEW MAINE TOURMALINE JEWELRY.

L. TARDIF JEWELER  
62 Main Street  
Waterville, Me.

Tues - Sat  
9 - 5

est. 1935

207-872-7542

**LakeHouse™ Renovations**

Design • Build • Renovate

Traditional Style Camps,  
Cottages and Lakefront Homes

207.242.3663  
[www.lakehousedesignbuild.com](http://www.lakehousedesignbuild.com)

**ACME LAND SURVEYING, LLC**

Professional Land Surveyors – Professional Foresters  
Property Surveys, Subdivisions, Topographic Surveys, MLIs,  
Elevation Certificates/LOMAs, ALTA/ACS Surveys,  
Deed Research, Wetland Delineation, Forest Management

108 Fairbanks Rd., Suite 5  
Farmington, ME 04938  
Website: [www.acmelandsurveying.com](http://www.acmelandsurveying.com)

Tel. (207) 778-4081  
Toll Free (800) 778-4081  
Email: [info@acmelandsurveying.com](mailto:info@acmelandsurveying.com)

**DAY'S REAL ESTATE**

*"The Waterfront Specialists"*

262 Augusta Road, PO Box 284  
Belgrade Lakes, Maine 04918  
207-495-3111

[www.daysrealestate.com](http://www.daysrealestate.com)  
[daysrealestate@roadrunner.com](mailto:daysrealestate@roadrunner.com)





207-474-2420

Design - Install - Maintain

Designing landscapes to beautify your property and protect our natural resources - Installing these landscapes in a manner that promotes sustainability and prevents erosion - Maintaining these landscape so your investment lasts a life time



Licensed, Certified & Accredited  
For All Of Your Landscaping Needs



www.lynchlandscaping.com



## Belgrade Vacation Rentals

### LAKEFRONT RENTALS

**Contact Us Today!** (800) 760-1503  
www.BelgradeVacationRentals.com


**Own A Property? We Will Rent it for You!**




### Showing the Best of World and American Cinema

17 Railroad Square, Waterville, Maine, 04901  
24-hour movie info:  
207-873-6526  
www.railroadsquarecinema.com

Home of the  
Maine International  
Film Festival  
(July 13 - 22, 2018)  
www.MIFF.org



free and open to the public



Colby College Museum of Art  
Waterville, Maine  
colby.edu/museum  
207.859.5600



### ST. MICHAEL SCHOOL

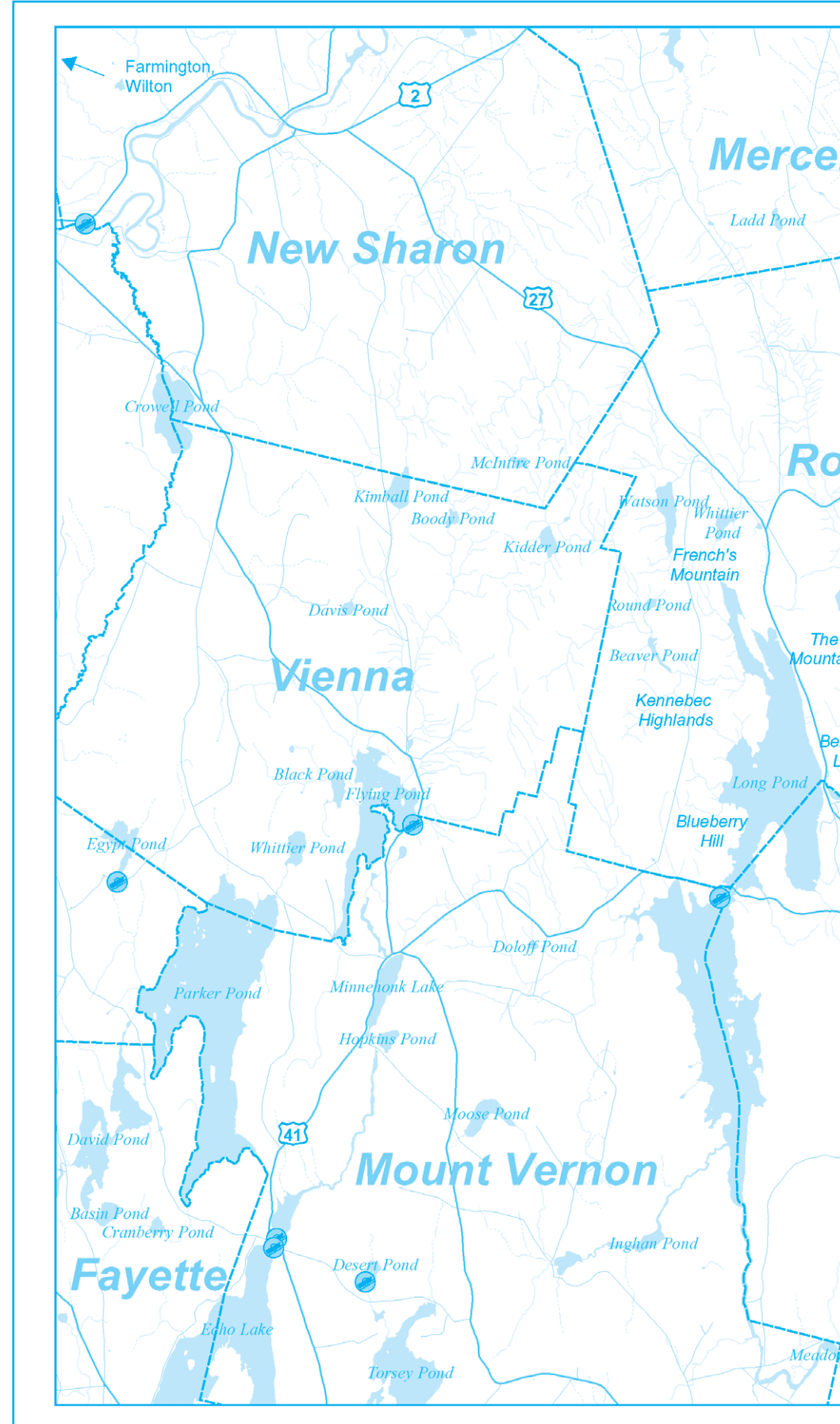
56 Sewall Street, Augusta, ME 04330  
207.623.3491 www.smsmaine.org

**NEW Fall 2016...  
PRE-K for 3 year-olds!**

St. Michael School will be opening a new Pre-School Program for 3 year-old children starting in the fall. This Program will have a curriculum, daily schedule and an overall program that is consistent with the mission and values that have been associated with a St. Michael School education. Register your child TODAY!



A Legacy of Excellence,  
a Foundation for the Future.



### EYE CARE OF MAINE

"Your Sight is Our Vision"

- Comprehensive Eye Exams
- Eyewear Center / Contact Lenses
- State of the Art Cataract Surgery
- Retinal Diseases and Glaucoma
- LASIK Refractive Surgery
- Laser Surgery
- Oculoplastic Diseases
- Botox, Juvederm and Latisse

• Ambulatory Surgery Center

www.Maine2020.com

 Steve R. Witkin, M.D.	 Peter C. Kohler, M.D.	 James R. Putnam, M.D.
 Marc B. Daniels, M.D.	 Helen Bell-Necevski, O.D.	
 Lorie Lepley Parks, O.D.	 Michael C. Parks, O.D.	 Ian M. Jones, O.D.

325A Kennedy Memorial Drive  
Waterville, Maine 04901

**873-2731**  
**(800) 660-3403**

# RIVERSIDE FARM

## RESTAURANT & WINE MARKET

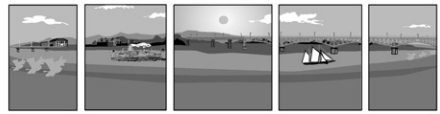
**Restaurant Hours:**  
Brunch  
Sundays - 10am-2pm  
Lunch  
Thursdays - Saturdays - 11am-2pm  
Dinner  
Thursdays - Saturdays - 5:30pm-8:30pm

**Wine Market Hours:**  
Tuesdays - Fridays - 10am-5pm  
Saturday - 10am-2pm

291 Fairfield Street  
Oakland, ME 04963  
For reservations call 207-465-4439

RiversideFarmMarket.com





## RIVERFRONT BARBEQUE & GRILLE

### WORLD CLASS BARBEQUE

SEAFOOD, PASTA, & VEGETARIAN ENTREES

207.622.8899

300 WATER STREET, AUGUSTA, MAINE  
WWW.RIVERFRONTBBQ.COM

FULL SERVICE DINING ≠ CATERING ≠ BULK TAKE OUT



## The Gin Mill

Augusta, Maine

Augusta's finest upscale lounge featuring fine wine, martinis, and over 100 brands of beer from Germany to Japan

Thursday thru Saturday 3:00pm until Midnight,  
Above the Riverfront Barbeque & Grille  
at 300 Water Street  
207.620.9200

## Lakepoint REAL ESTATE

"Put The Team to Work For You"

207.495.3700

GAIL RIZZO 207-242-8119  
gail@gailrizzo.com



PAT DONAHUE 207-730-2331  
pldcamp@msn.com



This home offers spacious home office on the first floor with side access, a gym/media room in daylight basement, 4 bedrooms three with lake views, 2.5 bathrooms, two car attached garage with 90' on China Lake and 5+/- acres.  
MLS# 1343161 \$789,000



Unique waterfront home on Long Pond. Custom designed with many fine details. First floor master with walk in closet. Living room with a gas fireplace, wrap around deck, covered porches, custom lighting throughout. Great waterfront with expansive views of the lake.  
MLS# 1334442 \$1,585,000

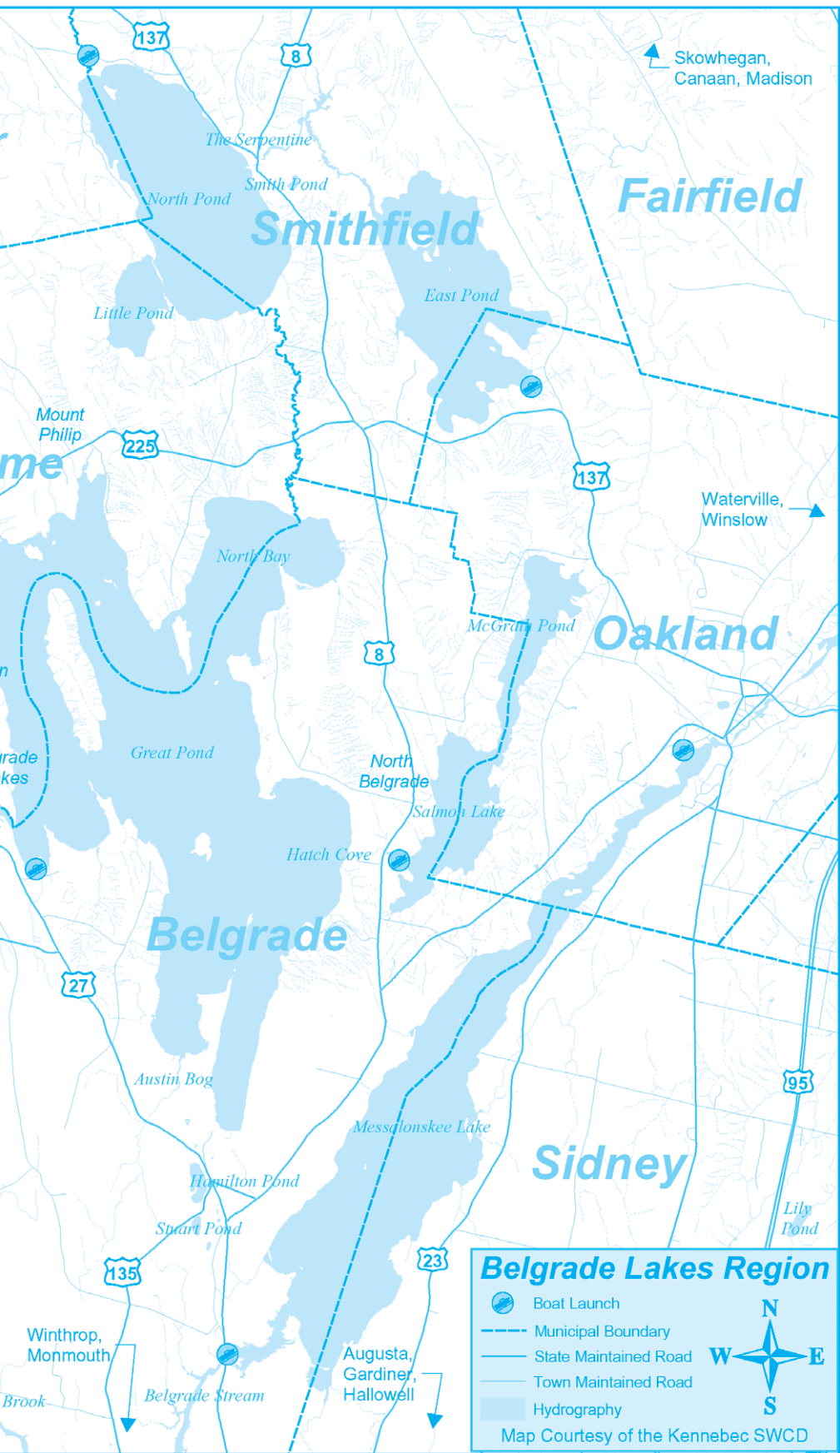


Private 15 room farmhouse in walking distance to Belgrade Lakes village. Ask about this homes history!  
MLS# 1330826 \$199,000



Belgrade Lakes 1917 colonial, country kitchen, sun room, spacious deck over two car garage, views of Long Pond, great village location.  
MLS# 1276273 \$262,499

221 Main Street, Belgrade Lakes, Maine 04918



## Visit the Businesses on Marina Drive

### GREAT POND MARINA

Old Town Fishing Kayaks



25 Marina Drive | Belgrade Lakes, ME  
(207) 495-2213 | www.greatpondmarina.com  
— TEST PADDLE BEFORE YOU BUY! —

## Lakeside Cottage Rentals



Exclusive Lakeside Rentals in the Belgrade Lakes Region

Located at 25 Marina Dr.

(207) 495-4046

www.LCRentals.com

### Waterfront Property Owners

We offer full service rental management services. Please call if you are interested in having us manage your home.

sadiesboathouse@hotmail.com

• 207-495-4045 •

Like us on Facebook!  
Open Friday & Saturday  
from 5 PM – 9 PM



## Clark Marine

Manchester - Monmouth - Belgrade

57 PUDDLEDOCK ROAD, MANCHESTER, MAINE  
207-622-7011 | CLARKMARINEMAINE.COM

GLASTRON



Bryant



Avalon



CRESTLINER



The one stop shop for your fresh water boating needs!

## G & L CONTRACTING

New Construction  
• Additions  
• Dock Installations  
• Jacking

207-495-9009

www.gandlcontractingmaine.com



Lift Services  
Serving: Great and Long Pond, Messalonskee, and Cobbossee





## — Upcoming —

### JUNE

• Trek Across Maine, the 180-mile ride from the mountains of Bethel to the sea at Belfast bicycle fundraiser to benefit the American Lung Association is scheduled for June 15-17. 1, 2 or 3 day options available. Volunteers needed. 1-800-499-LUNG

• Waterville Opera House presents "Seussical the Musical" June 15, 16, 22 at 7:30 pm and June 17, 23, 24 at 2 pm. 873-7000

• KVCAP's 4th Annual Golf Tournament & Silent Auction "Tee Off for Transportation" will be on Friday, June 22 at the Lakewood Golf Course, starting at 9 am. All proceeds support the Explorer public bus system. 859-1630

• Greater Gardiner River Festival is scheduled for Saturday, June 23, 9 am-10 pm on Gardiner's Historic Water Street and beautiful Waterfront Park on the Kennebec River. [www.gardinermainstreet.org](http://www.gardinermainstreet.org)

• The Maine Lakes Conference, the premier event for lake users and stewards, will be held on Saturday, June 23. 1-855-463-2652

• The 7th Annual Farm & Homestead Day will be held at Maine Organic Farmers and Gardeners Association on Saturday, June 23. Free admission for all. 568-4142

• The 2018 summer repertory season at the Theater at Monmouth, ROAR! The Year of the Woman, starts on June 23 with opening night of "Pride@Prejudice." 933-9999

• The 5th Annual Terrier Tee-Off Classic to support student-athletes and teams of the Thomas College Athletic program will be held on Wednesday, June 27 at the Waterville Country Club. Registration at 11 am; noon shotgun start. 859-1206

• Kennebec River Day will be held on Saturday, June 30 from 11 am-3 pm at Mill Park on Water Street in Augusta. The event will include homemade craft vendors, live music, games and local food. 623-4559

• The 2018 Kingfield POPS, the 16th annual, is set for Saturday, June 30 with the Bangor Symphony Orchestra and a great lineup of other performers starting at 4:30 pm. Youth 17 and under are free. Adult tickets on sale now in Kingfield and Farmington at Tranten's Store and Skowhegan Savings Bank and [www.kingfieldpops.com](http://www.kingfieldpops.com)

### JULY

• The 21st Annual Maine International Film Festival will take place July 13-22 in Waterville - 10 days, 100 films, 50 filmmakers 10,000 filmgoers. Order passes, make donations or volunteer at [www.miff.org](http://www.miff.org) or 861-8138.

• The Wall That Heals, Vietnam Veterans Memorial Replica & Mobile Education Center will be on Gardiner

Common, 2 Dresden Avenue, July 19 through July 22. [www.VVMF.org](http://www.VVMF.org)

• Old Hallowell Day - exhibits, parade, music, food, art and more - will be held on Saturday, July 21 on Water Street in downtown Hallowell.

### AUGUST

• Loon Call 5K Road Race on Saturday, August 4, along scenic shores of North Pond, 7:30 am registration, 8 am race, followed by Fun Run. 362-4772

• The annual Taste of Waterville - food, fun, music and dining outdoors - will be held on Wednesday, August 8, in downtown Waterville. 873-3315

• Readfield Heritage Days will be held August 10-11 with competitions, food, historical displays and more. 685-4939

• The 51st Blistered Fingers Family Bluegrass Music Festival will take place August 22-26 at the Litchfield Fairgrounds. 873-6539

### SEPTEMBER

• Save the Date for the Maine Preservation Gala, Friday, September 7 at the Portland Masonic. 847-3577

• The Common Ground Country Fair will be Friday through Sunday, September 21 through 23 in Unity. Gates open at 9 am. 568-4142



....Take it Outside continued from page 5

about 50 degrees (F) the fish began to get active and I caught a lot of very large (3- to 4.5-pound range) bass on flies fished deep near the bottom in about 20 feet of water near dropoffs. By the time this article is published, the water temperature will be in the mid to high 60's in most of our lakes and the bass will be in the shallows, either on their own beds or chasing sunfish on their beds. Fast action can be had with streamer flies, surface poppers, jerk baits, or Senko type jigs. There have also been some nice trout taken in the spillway below the Belgrade Lakes dam, including a couple of nice salmon I caught just after ice out. I released a 24", 4-pounder and kept the smaller of the two (22") because it had recently been wounded by an attack by a large pike and wasn't doing well.

Every spring I act as a "Fish Friends" mentor for the Atlantic Salmon Federation (ASF). I work with



Gabriella Blanco (Winthrop HS) taking pictures of her salmon fry with her I-phone.

several schools (and the MLRC) to help students raise Atlantic Salmon fry in refrigerated tanks in the classroom from eggs we receive from the National Hatchery at Green Lake in Ellsworth. The students study salmon life cycles and migrations and the fish are eventually stocked into the Bond Brook in Augusta to help restore this Federally-listed endangered species. This year the MLRC and students from Readfield Elementary, Winthrop HS,

and St Johns in Winslow released nearly 800 salmon fry. This is a great program and gets young people excited about this critical species.

The hiking trails in the Kennebec Highlands and nearby 7 Lakes Alliance (former BRCA) properties like French Mountain, Mount Phillip, and The Mountain are beautiful, verdant, and awash in spring and early summer wildflowers like trillium and lady slippers and birds and other wildlife. Check the 7LA FaceBook site for upcoming events (<https://www.facebook.com/belgradelakes/>) In April, students from the Kent's Hill School worked a Community Service Day with the 7LA Stewardship Committee to help clean up the trails on The Mountain. I encourage everyone to take advantage of the wealth of recreational opportunities this area offers. Take a kid fishing or on a hike, or paddling in a canoe. It's how memories are made. Or take a parent, so they can become a kid again.



**Pine Tree Camp**

**Paddle with a purpose on June 2**

22<sup>nd</sup> annual Paddle for Pine Tree Camp  
Saturday, June 2, 2018 | Kennebec River | Solon, ME  
Register today at [www.pinetreesociety.org](http://www.pinetreesociety.org)

**M O B** **MICHAEL BREAU** Creative solutions for all your Mac needs

**Macintosh and iOS support, based in Western Maine, working onsite throughout Maine**

If you have Macs, iOS devices, software or network problems, websites you'd like built, or any ideas you would like to implement using Macintosh computers, give me a call and we can discuss if I can help...

207-578-0226 • [www.michaelbreault.net](http://www.michaelbreault.net)





## — Conservation Too —

## Your Part in Protecting Water Quality

By Dale Finseth

I suppose Spring is officially here, It is time to start thinking about getting your feet wet and enjoying the summer season in your watershed. I'd like to start the season with an overview about water quality in our ponds and streams! Next week I'll speak more about invasive plants.

But first let's discuss "non-point source pollution" or NPS. The term means just what it implies. The pollution comes from many sources instead of a single "point". It's the rain runoff from roofs, parking areas and roadways. It includes the unimpeded runoff from your yard/lawn or a farmer's field. It may include the runoff from a local commercial/retail activity. Some of it may come from an area of the watershed where septic systems are not working effectively. NPS at all those sites add up and have a cumulative effect on our lakes. The spring runoff from heavy rainfall and such can heighten the impact of NPS. That's why its called "stormwater runoff".

How do we address these NPS sites? We use another "three letter abbreviation", a BMP or "Best Management Practice". I prefer to use the term "Better Management Practice". It's presumptuous to think we know what is best. A BMP is a practice done to address the problem caused by the Non-Point Source. Confused yet? It doesn't need to be that complicated. Staff here at the Kennebec District or your local watershed group are able to identify different types of BMP's designed to intercept water runoff. The practice either removes or decreases that runoff's impact on a stream or pond.

As a landowner what can you do to help protect and even improve the water quality of our marvelous watersheds? We work with various pond




and lake associations and individual landowners. This summer's issues of "Summertime In the Belgrades", will help readers identify different issues and how to address them. While we often focus on people who own camps on the water's edge our suggestions are for everybody who uses the resources in that area whether you simply walk on the beach, live year-round on the shoreline, or occasionally drop a boat into the water. Regardless of where you live, you are in some watershed. The water that leaves your property ends up in one of our streams or ponds. Even if it seems to disappear down a storm drain, that water runoff ends up somewhere. Think about your impact on that water and what it carries to the larger water body.

Some people like to focus on how they manage their yard. Minimize your lawn and only fertilize if you absolutely need to and then only in the fall. Keep the lawn well back from the water's edge. A good buffer planting of shrubs with erosion control

mulch [ECM] does a good job of intercepting water runoff, slowing its speed and filtering it before it gets to the lake. Control the water runoff from your buildings or driveway and parking areas. These impervious surfaces concentrate rainwater runoff and funnel it into the lake. Clean and manage drainage ditches. Divert that water into the woods or otherwise filter it so it doesn't transport soil, chemicals, or other toxics into the water. If you have a driveway or share a camp road, make sure it is designed and maintained to collect the rainwater and divert it into either filter ponds or a vegetative area where the water has time to settle before it gets to the lake. Check the road surface, the ditches and the culverts to see that they are NOT simply channeling soil particles and other pollutants into the lake. If you use a boat, keep it maintained. Don't spill or drain engine fluids into the water. Make sure you check your boat and trailer for any petroleum residue and/or other pollutants. ...AND MAINTAIN YOUR SEPTIC SYSTEM!!! Have it checked regularly and pumped as needed.

Remember, there is a lot to do in working to protect water quality.

For information about any of our conservation projects please contact Dale Finseth at 622-7847, x 3 or check our website at [www.kcswcd.org](http://www.kcswcd.org)

And in the next issue I'll talk about Invasive Plants. If you have been using other media, then you've already begun to read about identifying invasive plants this spring. I suggest an article in the May edition of Maine Home Garden News, a monthly newsletter published by the University of Maine Cooperative Extension. 

## Lakes Alliance and St. John Catholic School Team Up for Salmon

by Jodie Mosher-Towle

The Atlantic Salmon Federation's Fish Friends Program brought the 7 Lakes Alliance in Belgrade Lakes and St. John Catholic School in Winslow together for a day celebrating salmon and learning about conservation in the Belgrade Watershed on Monday. The Fish Friends Program is a statewide conservation effort which relies on volunteers in the classroom as well as volunteers to help the program run efficiently and reach as many school children throughout the state as possible.

Pete Kallin, Fish Friends volunteer and board member of the 7 Lakes Alliance, the result of the Belgrade Regional Conservation Alliance and Maine Lakes Resource Center combining recently to realize their shared conservation goals for the Belgrade Watershed, joined forces with Jodie Mosher-Towle, former Fish Friends Coordinator for the state and middle school teacher at St. John Catholic School to combine being Atlantic Salmon stewards and learning more about the food they would survive on and conservation in general. Pete needed students to help him release the eggs from his tank and the students of St. John were happy to help!

Both the school and 7 Lakes Alliance received 200 eyed salmon eggs to care for in February. Watching them hatch and develop while learning about each stage of their lives with fun activities and lessons helped reinforce how each one of them can help ensure salmon can thrive once again in



Pete Kallin counts out salmon fry to 1st grader, a surprised and excited Julia Robbins.

Maine's rivers.


Phil Mulville, captain of the science boat *The Melinda Ann*, was on hand to share retrieval of

macroinvertebrates, the main food for the newly released salmon fry, from the shore of the stream leading from Great Pond. Students collected creatures like snails, dragonfly and mosquito larvae and proceeded to get an up close view of each creature using a televised microscope.

Lauren Pickford shared the watershed model where the flow of pollutants is demonstrated as it flows into waterways and sent the students on a scavenger hunt searching for lake conservation examples on the resource center property.

Pete Kallin demonstrated how permeable pavers used in the construction of the driveway at the resource center help water absorb into the ground rather than flowing off like it did on the tar in the road. The water on the pavers was long gone but the water on the tar was a puddle even after an hour!

Many students said the most fun was releasing the fry into Bond Brook in Augusta. "It was so cool to watch them grow. I will miss them in my school" said kindergartner Danny Watkin.

Each fish was counted and tallied before each child dipped their clear plastic cups into the brook for release of the fry which are only about an inch long. Kallin and Pickford counted 199 from their batch and St. John had 188. Their release results are reported to the Atlantic Salmon Federation of Maine. 





## F. A. Rizzo Appraisal Company

### Frank Rizzo

Consultant/Appraiser

### Estate Appraisal & Planning

Certified Residential cr709

tel. (207) 495-3365

cell (207) 458-4916

farizzo@roadrunner.com



Since 1992

## — Accommodations —

**Alden Camps**, rustic lakeside cottages on East Pond, since 1911, American Plan meals, boat and motor rentals, dining and lobster bake open to public by reservation, 3 Alden Camps Cove, Oakland, 465-7703, [www.aldencamps.com](http://www.aldencamps.com)

**Castle Island Camps**, cottages on the water on Long Pond, American Plan meals, boat and kayak rentals, Castle Island Road, Belgrade Lakes, 495-3312, [www.castleislandcamps.com](http://www.castleislandcamps.com)

**The Village Inn**, rooms near the water, in the heart of the Village, 157 Main Street, Belgrade Lakes, 495-3553, [www.villageinnandtavern.com](http://www.villageinnandtavern.com)

**Belgrade Vacation Rentals**, lakeside camp and cottage rentals throughout the area, long and short stays, many size accommodations and rates, 1-800-760-1503, [www.belgradevacationrentals.com](http://www.belgradevacationrentals.com)

**Lakeside Cottage Rentals**, featuring over 70 private homes, 24/7 customer friendly service, 25 Marina Drive, Belgrade Lakes, 592-5577, 495-4046, [www.lcrentals.com](http://www.lcrentals.com)



## ALDEN CAMPS

Est. 1911



- Lobster Bakes on Friday nights by Reservation
- Lakeside Cottages • Boats & Motors
- Full American Plan
- Dining on the Porch by reservation Saturday through Wednesday

3 Alden Camps Cove  
Oakland, Me 04963  
(207-465-7703)

E-mail: [info@aldencamps.com](mailto:info@aldencamps.com) • Website: [www.aldencamps.com](http://www.aldencamps.com)

## Notebook

### Wild Woodland Workshop: Creating Habitat for Birds, Fish and Other Wildlife

• On Tuesday, June 27 an informative workshop by Maine Audubon for landowners will focus on the "Forestry for Maine Birds" approach to managing woodlands and on riparian habitat management for healthy fish and connected streams. Workshop attendees spend the first hour inside with a brown bag dinner learning about the program, then head out to a nearby forest site to discuss habitat connectivity, forest habitat features, and management approaches for habitat enhancement. Attendees will leave with a list of experienced woodland professionals and with a next steps plan for hiring a professional to visit their woodland and craft a management plan that meets their long-term goals and objectives. Workshop is free, but space is limited. Location: Maine Lakes Resource Center, 137 Main Street, Belgrade Lakes. 781-2330 ext. 219

25-29. Lady Black Bear Basketball and Boys' Black Bear Basketball Camps, grades 4-8, will be held June 25-28; Lakers Track Club (boys and girls ages 6-15) June 25 through August 11. In July Girls & Boys Soccer Camp, grades 3-8, will be July 9 through 13 and Little Kickers Soccer Camp, ages 5-8 will be August 13-16. 685-4923, ext. 1065

### Augusta

• 2018 Waterfront Wednesday Concerts, sponsored by the City of Augusta Recreation Bureau, will be held from 6 pm to sunset at Waterfront Park (off Water Street) on the following dates: June 20 - Sharon Hood and Dixon Road; June 27 - Rob Burnell Band; July 11 - Sundog; July 18 - Nikki Hunt Band; July 25 - Borderline Express; August 1 - TICKLE. 626-2350

### Belgrade

• Belgrade Regional Health Center has been recognized as a Let's Go! Site of Distinction. 5210 Let's Go! is a nationally recognized childhood obesity prevention program that helps create healthier communities, reaching children and their families wherever they live, learn, work and play to promote improved nutrition and increased physical activity. Belgrade is one of 11 practices of HealthReach Community Health Centers, which provide medical and behavioral health services to local residents from birth through retirement and beyond. This past year Belgrade engaged children and families with the 5210 message (5 servings of fruits and vegetable, 2 hours or less of recreational screen time, 1 hour or more of physical activity, and no sugary drinks) through posters in the waiting room and in exam rooms, utilized the Healthy Habits Questionnaire, measured Body Mass Index at every well child check and partnered with Maine SNAP-ed to facilitate a free Ten-Tips nutrition class at the Union Church of Belgrade Lakes. 660-9914

### East Madison

• The East Madison Historical Association is holding its annual yard and bake sale fundraiser on Saturday and Sunday, June 2 and 3, at 1108 East Madison Road in Madison.

### Gardiner

• On Tuesday, June 26, from 5-9 pm, Gardiner will host a stopover of the Buffalo, New York to Halifax, Nova Scotia Great Race. The race is an antique, vintage and collector car competitive controlled-speed endurance road rally on public highways with cars from 1972 and older. It is a test of a driver/navigator team's ability to follow precise course instruction and the car's and team's ability to endure on a cross-country trip. It is not a test of top speed. Sponsored by Main Street Gardiner, the event will feature antique cars, food trucks, live music and fireworks.



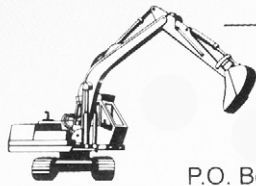
### BOOKS, PUZZLES, TOYS, GAMES

A store for children of all ages,  
the young and the young at heart.

Open Monday 12 to 5 • Tues. - Sat. 9 to 5  
52 Main St. Waterville 872-4543

## DAVID STEVENS

Excavation & Septic Systems



LOAM GRAVEL SAND

465-3815

Cell: 314-0314

P.O. Box 146 • Belgrade, Maine 04917

### CASTLE ISLAND CAMPS

Bait, Tackle, Gas,  
Boat, Kayak, and  
Paddleboard  
Rentals



Boats, Daily or  
Weekly

495-3312

Rentals for  
Long Pond Only

## SPIRO & COMPANY

### Gourmet Food Truck "A Fresh Taste of Greece"

Belgrade Lakes • 441-2103

Open daily 11-4 • Friday 11-7

[www.spiroandcompany.com](http://www.spiroandcompany.com)

David J. Auclair  
[www.auclaircycle.com](http://www.auclaircycle.com)

### AUCLAIR CYCLE & SKI

64-66 BANGOR ST. AUGUSTA, ME 04330  
623-4351 / 800-734-7171 • Fast Professional Service  
Bicycles • Skateboards • Roof Racks • Rentals

### Maine Farmland Trust

• Maine Fare is a month-long traveling series of hands-on field trips and workshops that highlight different regions throughout the state throughout the month of June: June 3 - Indigenous Food Traditions; June 10 - Foraging and Growing Mushrooms; June 17 - Farmstead Cheesemaking; June 24 - Whole Lamb Butchery; and June 30 - Finale Feast. For locations and other questions contact [Mainefarmlandtrust.org](http://Mainefarmlandtrust.org)

### Maranacook Summer Sports Camps

• Summer sports camps are starting soon at Maranacook High School in Readfield. New this year Theatre Camp for grades 5-8 will be held June

### [www.MaineAdirondackChairs.com](http://www.MaineAdirondackChairs.com)



Custom White Cedar Furniture  
by Rob Lemire

207-620-2592  
Vassalboro, Maine

Locally sourced  
Maine White Cedar

Free delivery within  
40 miles of Vassalboro

Assembled chairs  
Planed & sanded one side  
Thicker wood  
Save money  
Kits available for shipping





## Dining

### Augusta

• **Riverfront Barbeque & Grille and Gin Mill Lounge**, world class barbeque, seafood, pasta and vegetarian entrees, full service dining, catering, bulk take out, 300 Water Street, Augusta, [www.riverfrontbbq.com](http://www.riverfrontbbq.com), 622-8899

### Belgrade

• **Sadie's Boathouse Restaurant** at Great Pond Marine, hearty contemporary American fare, 25 Marina Drive, Belgrade Lakes, 495-4045, 242-1273

• **Spiro & Company**, gourmet Greek food, Main Street, Belgrade Lakes Village, [www.spiroandcompany.com](http://www.spiroandcompany.com), 441-2103

• **The Village Inn and Tavern**, 157 Main Street, Route 27, Belgrade Lakes Village, 495-3553, [www.villageandtavern.com](http://www.villageandtavern.com)

• **Winterberry Farm Café**, homemade treats, pie, cookies, granola bars, grilled organic cheese sandwiches, veggies, drinks, Route 27, Belgrade, 649-3331

### Oakland

• **Alden Camps**, lunch or dinner by reservation Saturday-Wednesday space permitting, lobster bakes on Friday night by reservation, 3 Alden Camps Cove, Oakland, [www.aldencamps.com](http://www.aldencamps.com), 465-7703

• **Riverside Farm Restaurant & Wine Market**, simple, wholesome food and drink since 1990, 291 Fairfield Street, Oakland, [www.riversidefarmmarket.com](http://www.riversidefarmmarket.com), 465-4439

### Oakland - Wines & Spirits

• **Tree Spirits**, tasting room for award winning wines and spirits made from local apples, pears and maple syrup, tours available, 152 Fairfield Street, Oakland, [www.treespiritsofmaine.com](http://www.treespiritsofmaine.com)

157 Main Street/RT 27  
Belgrade Lakes, Maine 04918  
[villageinnandtavern@gmail.com](mailto:villageinnandtavern@gmail.com)  
207.495.3553  
[www.villageinnandtavern.com](http://www.villageinnandtavern.com)

THE VILLAGE INN AND TAVERN  
Belgrade Lakes, Maine  
SINCE 1921

WINTERBERRYFARMSTAND.COM  
Route 27, Belgrade  
207.649.3331

**SUMMER CSA**  
WEEKLY BASKET OF ORGANIC VEGETABLES ALL SUMMER  
SIGN UP NOW!

Belgrade's working family farm  
**FARMSTORE & CAFÉ**  
Open 7 days a week, 9am - 6pm  
Featuring all-organic products grown and produced here on the farm.  
3 miles south of Belgrade Lakes Village on route 27.

## ACAT ends season with comedy "Moonlight and Magnolias"

Aqua City Actors Theatre (ACAT) concludes its 2017-2018 season—MAINE, MANNERS AND MAYHEM—with the comedy "Moonlight and Magnolias" by Ron Hutchinson. Performances are June 1-2 and 8-9 at 7:30 p.m., and June 3 and 10 at 2:00 p.m., in Studio 93 at The Center, 93 Main Street, Waterville.

"Moonlight and Magnolias" is set in 1939, widely considered Hollywood's greatest year. This comedy-farce imagines the rewriting of the screenplay for the much anticipated film "Gone with the Wind," based on Margaret Mitchell's popular novel. Legendary

582-4460

### Hinkley

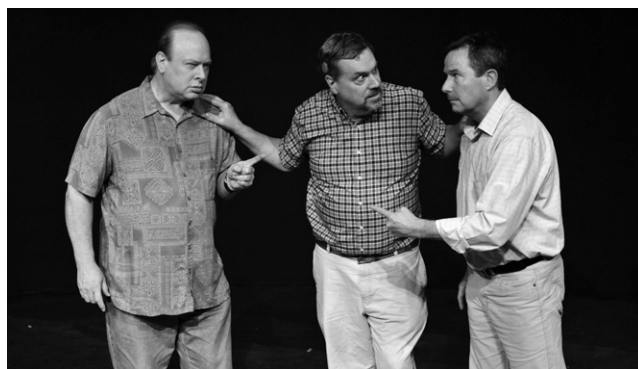
• L.C. Bates Museum on the campus of Good Will-Hinckley will host nature-oriented day camps for children and teens throughout the summer, including Naturalists Arts 6/25-29, Time Travel 7/5-6, Safari Camp 7/9-13, Camp Rock 7/16-20, Astronomy 7/23-27, Very Young Naturalists Camp 7/30-8/3, Science Buddies (STEAM) Camp 8/6-10 and Junior Curators 8/13-17. For ages, rates and times, contact [lcbates@gwh.org](mailto:lcbates@gwh.org) or 238-4250.

### Monmouth

• CampShakes at the Theater at Monmouth 2018 offers three one-week sessions of William Shakespeare day camp, 9 am-4 pm for fall grades 3-8: July 16-20 "As You Like It," July 23-27 "Romeo & Juliet," July 30-August 3 "Twelfth Night." Tuition for each session is \$225. Scholarships are available. 933-9999 or [theateratmonmouth.org/education/campshakes](http://theateratmonmouth.org/education/campshakes)

### Mount Vernon

• Natural History Week, presentations and nature walks by visiting naturalists, is scheduled for June 18-22 and July 2 at Bearnstow on Parker Pond. Morning lectures are at 10:30 am, afternoon nature walks 1:30 pm. The following topics will be highlighted: 6/18 - "Maine Forests: Past, Present and Future," 6/19 - "Plant Mating Systems and Strategies," 6/20 - "Maine's Native Bumble Bees," 6/21 - "Climate Change in New England: A Long-term Perspective from Lakes," 6/22 - "Maine Woods:



Joe Klapatch, Randolph M. Jones and Peter Diplock in ACAT's Moonlight and Magnolias

Finding the Right Balance," 7/2 - "Parker Pond's Animals without Backbones." Admission is free; contributions are greatly appreciated. Lunch available for \$10 during full-day programs. 293-2280

### Sidney

• The 3rd Annual Halee Lyn Cummings Memorial Barrel Race will be held on Friday, June 29 through Sunday, July 1 at the Silver Spur Riding Club, 3130 West River Road. The event will include live music, concessions and camping. The late entry fee for contestants is June 15. 215-7222.

### Smithfield

• Public suppers, potluck, will be held at the Smithfield Baptist Church, downtown Smithfield (Route 137) at 5:30 pm on the following dates: June 23, July 7 and 21, August 4 and 16 and September 1. Adults are \$6, under 12 \$3.

### Waterville

• Through a partnership between Colby College and Central Maine Growth Council free wireless will make Waterville's downtown among the most connected in Maine. The range will span from the Hathaway Creative Center to Post Office Square and from the western edge of the Concourse to the Head of Falls and the riverwalk. The wireless signals will be strongest outdoors and are primarily intended for use in public spaces. The service will be a bonus for businesses, downtown residents and summer residents and vacationers shopping and attending events.

producer David O. Selznick has fired the director of his new epic and shut down production, because the original screenplay simply doesn't work. While fending off the film's stars, gossip columnists and his own father-in-law, Selznick sends for screenwriter Ben Hecht and pulls director Victor Fleming from the set of "The Wizard of Oz." Locked in Selznick's office for five days, the three men hysterically act out iconic scenes from the novel and labor to fashion a screenplay that will become the blueprint for one of the most successful and beloved films of all time.

Directed by Michael Jinbo, the play features a quartet of veteran ACAT actors: Randolph M. Jones as Hollywood producer David O. Selznick; Peter Diplock as screenwriter and newspaperman Ben Hecht; Joe Klapatch as film director Victor Fleming; and Karen LaPlante as Selznick's secretary, Miss Poppengul.

"This romp of a play is a love letter to Hollywood that peeks behind the scenes or behind the screen, as it were," says director Jinbo. "Set during Hollywood's 'golden era,' it will particularly appeal to movie buffs and lovers of fast-paced comedy."

General admission tickets are \$15 for adults; \$10 for senior citizens (age 60 and older) and youth (age 18 and younger). Tickets will be available at the door and can be reserved in advance through ACAT's website. For more information, visit ACAT at [www.acattheatre.org](http://www.acattheatre.org) and [www.facebook.com/acattheatre](http://www.facebook.com/acattheatre).

Those with a peanut allergy are warned that peanuts are used extensively on the set in this production.

**UNION COFFEEHOUSE**

Featuring  
**The Racket Factory**  
Playing Goodtime Toe-Tapping Music - Reels, Jigs, Folk Songs, Hambos, and Polkas  
Plus Open Mic Hour  
**Saturday, June 9 - 7:00 PM**  
Union Church - Route 27 in Downtown Belgrade Lakes  
Refreshments \$5.00 Donation at the Door





## -Business Directory-

### ACCOMMODATIONS

See page 18

### ADIRONDACK CHAIRS

**Maine Adirondack Chairs**, 97 Holman Day Road, Vassalboro, 620-2592, [www.maineadirondackchairs.com](http://www.maineadirondackchairs.com)

### ANTIQUES

**Hathaway Mill Antiques**, Multi-Dealer Emporium, 10 Water Street, Waterville, 877-0250, [www.athawaymillantiques.com](http://www.athawaymillantiques.com)

### ART

**Colby College Museum of Art**, 5600 Mayflower Hill, Waterville, 859-4000, [www.colby.edu/museum/](http://www.colby.edu/museum/)

### BANKING

**Skowhegan Savings Bank**, 450 Civic Center Drive, Route 27, Augusta, 1-800-303-9511, 623-2300, [www.skowsavings.com](http://www.skowsavings.com)

### BEVERAGES

**Tree Spirits**, 152 Fairfield Street, Oakland, 861-2723, [www.treespiritsofmaine.com](http://www.treespiritsofmaine.com)

### BICYCLES

**Auclair Cycle & Ski**, 64 Bangor Street, Augusta, 623-4351, [www.auclaircycle.com](http://www.auclaircycle.com)

### BOAT COVERS

**Covers It All Upholstery**, 1042 Kennedy Memorial Dr, Oakland, 465-7847, [www.watervilleupholstery.com](http://www.watervilleupholstery.com)

### BOAT LIFTS

**Hammond Lumber Company**, Auburn, Bangor, Belgrade, Boothbay Harbor, Brunswick, Damariscotta, Fairfield, Farmington, Greenville, Pemaquid, Portland, Skowhegan, Wilton, 1 866-HAMMOND, [www.hammondlumber.com](http://www.hammondlumber.com)

### BOAT MOORINGS

**Great Pond Marina**, 25 Marina Drive, Route 27, Belgrade Lakes, 495-2213, [www.greatpondmarina.com](http://www.greatpondmarina.com)

### BOAT RENTALS

**Castle Island Camps**, Long Pond, 441 Castle Island Road, Belgrade Lakes, 495-3312, [www.castleislandcamps.com](http://www.castleislandcamps.com)

**Great Pond Marina**, 25 Marina Drive, Route 27, Belgrade Lakes, 495-2213, [www.greatpondmarina.com](http://www.greatpondmarina.com)

### BOAT SALES AND SERVICES

**Clark Marine**, 57 Puddledock Road, Manchester, 622-7011, [mail@clarkmarine.biz](mailto:mail@clarkmarine.biz), [funonthewaterstartshere.com](http://funonthewaterstartshere.com)

**Hamlin's Marine**, 290 West River Road, Waterville, 872-5660, [www.hamlinsmarine.com](http://www.hamlinsmarine.com)

**Mid-Maine Marine and RV**, 885 Kennedy Memorial Drive, Oakland, 465-2146, [www.midmainemarine.com](http://www.midmainemarine.com)

### BOAT STORAGE

**Belgrade Boat Storage**, 31 Pinkham's Cove Road, Belgrade, 495-3421, 314-3287, [www.belgradeboatstorage.com](http://www.belgradeboatstorage.com)

**Belgrade Lakes Marine and Storage, Inc**, 366 Augusta Road, Belgrade, 495-2378, [www.belgradelakesmarine.com](http://www.belgradelakesmarine.com)

**Clark Marine**, 57 Puddledock Road, Manchester, 622-7011; and Route 202, Monmouth, [mail@clarkmarine.biz](mailto:mail@clarkmarine.biz), [funonthewaterstartshere.com](http://funonthewaterstartshere.com)

**Great Pond Marina**, 25 Marina Drive, Route 27, Belgrade Lakes, 495-2213, [www.greatpondmarina.com](http://www.greatpondmarina.com)

**Hamlin's Marine**, 290 West River Road, Waterville, 872-5660, [www.hamlinsmarine.com](http://www.hamlinsmarine.com)

**Mid-Maine Marine**, 885 Kennedy Memorial Drive, Oakland, 465-2146, [www.midmainemarine.com](http://www.midmainemarine.com)

### BOOKS

**Children's Book Cellar**, 52 Main Street, Waterville, 872-4543, [childrensbookcellar.com](http://childrensbookcellar.com)

### BUILDERS

**Craig's Carpentry/North Bay Estates**, Route 8, North Belgrade, Craig Alexander, 649-3749

**G&L Contracting**, 116 Lakeshore Drive, Belgrade Lakes, 215-7951, 495-2325, 233-7408, [gandlcontractingmaine.com](http://gandlcontractingmaine.com)

**LakeHouse Design, Build, Renovations**, 17 Birchwood Road, Augusta, 242-3663, [www.lakehousedesignbuild.com](http://www.lakehousedesignbuild.com)

### BUILDING MATERIALS

**Hammond Lumber Company**, Auburn, Bangor, Belgrade, Boothbay Harbor, Brunswick, Damariscotta, Fairfield, Farmington, Greenville, Pemaquid, Portland, Skowhegan, Wilton, 1 866-HAMMOND, [www.hammondlumber.com](http://www.hammondlumber.com)

### COMPUTER CONSULTANTS

**Macintosh Solutions**, Michael Breault, 24 Welch Road, Wilton, 645-5083, cell 578-0226, [www.michaelbreault.net](http://www.michaelbreault.net)

### DINING

See Directory on page 15

### DOCKS

**G&L Contracting**, 116 Lakeshore Drive, Belgrade Lakes, 495-2325, 215-7951, 233-7408, [gandlcontractingmaine.com](http://gandlcontractingmaine.com)

**Hammond Lumber Company**, Auburn, Bangor, Belgrade, Boothbay Harbor, Brunswick, Damariscotta, Fairfield, Farmington, Greenville, Pemaquid, Portland, Skowhegan, Wilton, 1 866-HAMMOND, [www.hammondlumber.com](http://www.hammondlumber.com)

### ELDER CARE

**Maine-ly Elder Care**, 28 Center Street, Oakland, 465-3249, [www.maine-lyeldercare.com](http://www.maine-lyeldercare.com)

### ENGINEERING

**Thayer Engineering**, septic design, storm water mitigation, permitting, 17 Hasson Street, Farmingdale, 582-7762, [www.thayereng.com](http://www.thayereng.com)

### ESTATE APPRAISALS

**F.A. Rizzo Appraisal Company**, estate appraisal and planning for real estate, 495-3365, 458-4916, [farizzo@roadrunner.com](mailto:farizzo@roadrunner.com)

### EXCAVATING

**Belgrade Boat Storage**, 31 Pinkham's Cove Road, Belgrade, 495-3421, 314-3287, [belgradeboatrentals.com](http://belgradeboatrentals.com)  
**David Stevens**, P0 Box 146, Belgrade, 465-3815, cell 314-0314

### EYE CARE

**Eye Care of Maine**, 325 E. Kennedy Memorial Drive, Waterville, 873-2731, 1-800-660-3403, [www.Maine2020.com](http://www.Maine2020.com)

### FARMSTANDS

**Winterberry Farm**, 538 Augusta Road, Route 27, Belgrade, 495-2593, 649-3331, [www.winterberryfarmstand.com](http://www.winterberryfarmstand.com)

### FINANCIAL PLANNING

**Golden Pond Wealth Management**, 129 Silver Street, Waterville, 873-2200, [www.goldenpondwealth.com](http://www.goldenpondwealth.com)

### FIREWOOD

**J & M Logging, Inc.** 853 Civic Center Drive, Augusta, 622-6353, [www.jmlogginginc.com](http://www.jmlogginginc.com)

### FLOORING

**Hammond Lumber Company**, Auburn, Bangor, Belgrade, Boothbay, Brunswick, Damariscotta, Fairfield, Farmington, Greenville, Pemaquid, Portland, Skowhegan, Wilton, 866-HAMMOND, [www.hammondlumber.com](http://www.hammondlumber.com)

### GENERATORS

**Generators of Maine**, 262 Augusta Road, Belgrade, 495-2285, [www.generatorsofmaine.com](http://www.generatorsofmaine.com)

### HEALTH CENTERS

**Belgrade Regional Health Center**, 4 Clement Way, Belgrade Lakes, 495-3323, [www.healthreachchc.org](http://www.healthreachchc.org), [belgradechc.org](http://belgradechc.org)

### INSECT CONTROL

**Mosquito Banditos**, [mosquitobanditos-maine.com](http://mosquitobanditos-maine.com), 613-5656

### JEWELRY

**L.Tardif Jeweler**, 62 Main St., Waterville, 872-7542, [ltardifjewelers.com](http://ltardifjewelers.com)





## KITCHENS

**Hammond Lumber Company**, Auburn, Bangor, Belgrade, Boothbay, Brunswick, Damariscotta, Fairfield, Farmington, Greenville, Pemaquid, Portland, Skowhegan, Wilton, 866-HAMMOND, [www.hammondlumber.com](http://www.hammondlumber.com)

## LAKE ASSOCIATIONS

**Belgrade Lakes Association (BLA)**, Long Pond and Great Pond, PO Box 551, 137 Main Street, Belgrade Lakes, 512-5150, [belgradelakesassociation.org](http://belgradelakesassociation.org)

## LANDSCAPING

**G&L Contracting**, Belgrade Lakes, 215-7951, 495-2325, 233-7408, [gandlcontractingmaine.com](http://gandlcontractingmaine.com)  
**Lynch Landscaping**, Skowhegan, 474-2420, [lynchlandscaping.com](http://lynchlandscaping.com)

## MOVIE THEATERS

**Railroad Square Cinema**, call for titles and times, 17 Railroad Square, Waterville, 873-6526, [www.railroadsquarecinema.com](http://www.railroadsquarecinema.com)

## MUSEUMS

**Colby College Museum of Art**, 5600 Mayflower Hill, Waterville, 859-5600, [www.colby.edu/museum/](http://www.colby.edu/museum/)

## PHYSICAL THERAPY

**Dockside Physical Therapy**, 47 Main Street, Belgrade Lakes, 495-3195, 512-2544, Fax 512-2545

## PIANO ENJOYMENT

**Diane Gorman**, 191B Bartlett Road, Belgrade, 495-3222

## REAL ESTATE DEVELOPMENTS

**North Bay Estates**, Belgrade, 649-3749, [crgsnbe@yahoo.com](mailto:crgsnbe@yahoo.com)

## REAL ESTATE

**Day's Real Estate**, 262 Augusta Road, Route 27, Belgrade Lakes, 495-3111, [www.daysrealestate.com](http://www.daysrealestate.com)  
**Hoang Realty**, 31 Western Ave., Augusta, 623-0623, [www.hoangrealty.com](http://www.hoangrealty.com)  
**LakeHome Group**, Main Street, Belgrade Lakes, 495-2500,  
**Lakepoint Real Estate**, 221 Main Street, Belgrade Lakes, 495-3700, [www.belgradelakepoint.com](http://www.belgradelakepoint.com)  
**Sprague & Curtis Real Estate**, 75 Western Avenue, Augusta, 623-1123, [www.spragueandcurtis.com](http://www.spragueandcurtis.com)

## LODGING RESERVATIONS

See page 14

## RESTAURANTS

See Dining Directory on page 15

## Music at First Concerts to Raise Funds for Essentials Closet

by Gregor Smith



On June 3 and 10, Waterville's First Congregational Church will hold classical music concerts to raise money for its Essentials Closet, which provides toiletries and other household necessities to those in need. The Sunday afternoon performances, by the Augusta Symphony Orchestra Wind Quintet on June 3 and the Resinosa

Ensemble on June 10, will take place at 3:00. The suggested donation is \$10.

Composed of members of the Augusta Symphony Orchestra, the wind quintet formed approximately one year ago and has been performing publicly since last November. Its players are flutist Chris Lansley, oboist Necia Chaparin, clarinetist Louise Foxwell, French hornist Lee Lenfest, and bassoonist Chris Falcone. Their program will include works by Wolfgang Amadeus Mozart, Franz Ignaz Danzi, Johann Sebastian Bach, Carl Philip Emmanuel Bach, Terence Greaves, and Denes Agay, among others.

Also recently formed, the Resinosa Ensemble comprises mezzo soprano Jo\_lle Morris, cellist Eliza Meyer, and pianist Bridget Convey. In their inaugural season, in 2016, they performed diverse works from female composers spanning nine centuries from twelfth-century Christian mystic Hildegard Von Bingen and Renaissance Venetian singer and composer Barbara Strozzi to Americans Amy Beach (1867-1944) and Libby Larsen (b. 1950). In the next few years, Resinosa will present new works by Maine composers. Their current concert will feature pieces by Leonard Bernstein, Beth Wiemann, Henriette Hilda Bosmans, Johannes Brahms, Bohuslav Jan MartinŮ, Paul John Rudoi, and Blossom Dearie.

The Waterville Area Essentials Closet stocks care products and household items, e.g. soap, deodorant, shampoo, toilet paper, tooth paste, diapers, and laundry detergent, which are not covered by the Supplemental Nutrition Assistance Program (SNAP), a.k.a. "food stamps," or other governmental assistance programs. Although sponsored by a church, the Essentials Closet is available to all who are in need, regardless of religious affiliation or lack thereof. It does not receive any money from the local, state, or federal government; rather it relies on pledges and fundraising by the congregation, as well as outside grants and donations. It was recently awarded \$1200 from Inland Hospital through the hospital's Community Benefit Program.

The two June concerts are the middle two in a series of four Music At First performances. Pianist Christine Letcher gave a recital on May 19, and the duo ScheckMate, with Raffael Scheck on cello and baroque cello and Timothy Burris on guitar and the-*orbo*, will perform on August 25.

The church is located at the corner of Eustis Parkway and Main Street in Waterville. For more information, call 872-8976 or visit [www.watervilleucc.org](http://www.watervilleucc.org).

## RETIREMENT COMMUNITIES

**Granite Hill Estates**, 60 Balsam Drive, Hallowell, 626-7786, 1-888-321-1119, [www.granitehillestates.com](http://www.granitehillestates.com)

## SCHOOLS

**St. Michael School**, grades pre-K 3-year-old through 8th, 56 Sewell Street, Augusta, 623-3491, [www.smsmaine.org](http://www.smsmaine.org)

## SECURITY SYSTEMS

**Cayer Security Services, Inc**, 208 College Avenue, Waterville, 453-9177, [www.cayersecurity.com](http://www.cayersecurity.com)

## SURVEYING

**Acme Land Surveying**, 108 Fairbanks Road, Suite 5, Farmington, 778-4081, [www.acmelandsurveying.com](http://www.acmelandsurveying.com)

## WINDOWS

**Hammond Lumber Company**. Auburn, Bangor, Belgrade, Boothbay, Brunswick, Damariscotta, Fairfield, Farmington, Greenville, Pemaquid, Portland, Skowhegan, Wilton, 1-866-HAMMOND, [www.hammondlumber.com](http://www.hammondlumber.com)

Changes?  
Updates?  
New contact information?  
Please let us know...  
[mo.breault@gmail.com](mailto:mo.breault@gmail.com)  
or [ebelnews@earthlink.net](mailto:ebelnews@earthlink.net)





## The Great War 100 Years Ago

by Martha F. Barkley

Last summer at the Belgrade Public Library, Richard Rubin from Brunswick, Maine, reminded the crowd gathered that the French have not forgotten what the American soldiers sacrificed for them one hundred years ago. Maybe we Americans have, but the French have not.

*The Last of the Doughboys*, 2013, and the newly published *Back Over There* by historian Rubin both tell the stories of "The Forgotten Generation and Their Forgotten World War". After he spent years traveling to interview WWI veterans across the USA before they died, Rubin's historical account made such a splash that the New York Times sent him to France to find the farm fields and forests where these momentous battles were fought when American troops entered in 1917.

We were shown slides of some of the WWI vets covered extensively in *Doughboys*: Moses Hardy of Aberdeen, Mississippi on his 113th birthday and Samuel Goldberg in Greenville, RI at age 106, et al. Yes, alive and responsive to Rubin's several visits and multiple interviews.

"Some say (doughboys) refers to the phenomenon of infantry, covered in dust after a long march down dirt roads, looking as if they had rolled in flour; others attribute it to the popularity of doughnuts--distributed by the Salvation Army..."

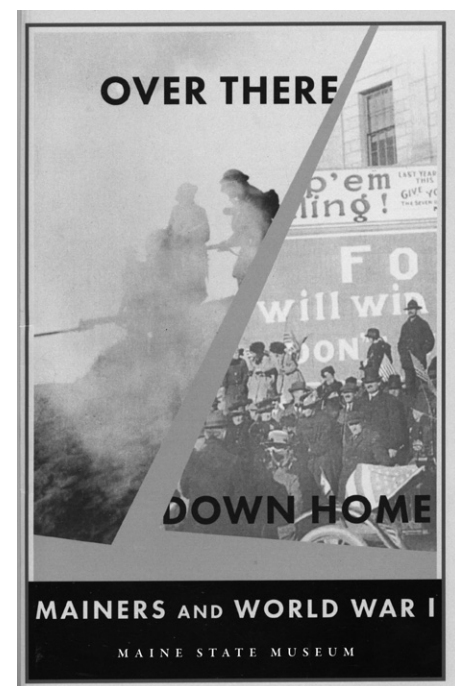
Most of the slides shared at the library presentation were from Rubin's later visits to the verdant Alsace farming country and tractor roads where the bloody battles took place. The beautiful Argonne forests have vacation pathways where off, in the trees, are trenches, cement and earthen, and much evidence of WWI. He collected many a souvenir of war, one quite dangerous that he did not touch. His local guide and WWI museum owner, sprayed the dangerous munition with bright orange. After twenty or so such finds, the explosive experts will arrive to remove them. Too often people are hurt or killed in this area of embattlement 100 years later.

One particular find surprised me greatly. Rubin said there were many, like mushrooms, when fields were tilled. They are the German electrical connectors for all their cement trenches and underground tunnels. The Germans electrified villages as they conquered them.

"In the last forty-seven days of World War I, 26,277 Americans were killed fighting in the vicinity, in what is now known as the Meuse-Argonne Offensive; it remains, to this day, the deadliest battle in American history. More than fourteen thousand of them are buried in Romagne, spread out over 130 acres in what is the largest American cemetery in Europe". General Pershing was the man in charge of these

magnificent cemeteries with rows and rows of crosses or the Star of David for every soldier.

Not many Americans visit these places, but the local French people smiled every time Rubin revealed he was American and not British. Perhaps some of us could make the pilgrimage to find these same places so carefully explored in *Back Over There*, "One American Time-Traveller, 100 Years Since the Great War, 500 Miles of Battle-Scarred French Countryside, and Too Many Trenches, Shells, Legends, and Ghosts to Count."



Visit the Maine State Museum to view the exhibit *Over There, Mainers and World War I*.

s p r a g u e a n d c u r t i s . c o m

6 2 3 . 1 1 2 3

75 Western Ave. • Augusta, ME

**CHINA-THREE MILE POND** — Beautiful, custom built, high quality 3-BR, 3.5 BA waterfront home excellent frontage, gorgeous westerly views. LG indoor rec room w/tub & lap pool. Cherry kitchen w/granite & center island, open DR/LR w/coffered ceilings. Master w/private BA w/water views. Lower level w/FR w/gas fireplace, kitchenette, glass doors to the patio/front yard, full BA, rec room w/10'x36' heated lap pool, lots of glass overlooking the water. MANY EXTRAS. CALL US!  
MLS #1350861 \$499,000

**CHINA-CHINA LAKE** — Beautiful lakefront living, over 760' of waterfront, 12+ acres, peaceful cove setting. Gorgeous lake views. Spacious 4BR, 2.5BA Colonial home w/spectacular 1st floor cathedral FR w/built-ins, fireplace. Cherry kitchen w/breakfast nook, formal DR and LR library/den, master suite w/bath. Lower level rec room, 3 car attached w/storage. Lawn, fields, woods.  
MLS #1346281 \$549,000

**WINTHROP-COBOSSEE LAKE** — Wonderful 3 season cottage on Spectacular Cobossee Lake. 300' of prime lake frontage. Main Cottage offers 2BR & open kitchen/LR, enclosed porch, a second screened porch for summer enjoyment. Also has an adorable "bunk house" for kids or guests. Deck & dock included. Enjoy relaxing at this great property! MLS #1342432 \$425,000

**ROME-GREAT POND** — Classic Maine Cottage. Enjoy days & nights on spectacular Great Pond in the Belgrade Lakes Region. Open, 1 floor living w/2BR, kitchen & dining & living areas. Just steps to Great Pond and your own dock! The access road is plowed year round. Enjoy swimming, boating, exploring, fishing, or just relaxing on your own piece of heaven! MLS #1341612 \$299,900

**WAYNE-ANDROSCOGGIN LAKE** — Classic Maine Cape, over 4 ac & over 800' frontage on Mill Stream & Androscoggin Lake. Sunny interior w/great south exposure. Kitchen, spacious LR w/wood burning fireplace, DR w/stone fireplace & charming 3 season porch w/built-ins. Master BR on 1st floor w/bath, office. Very private yet walk to the village store, post office, yacht club. Dock system for summer fun!  
MLS#1338179 \$575,000

**LITCHFIELD-SAND POND-TACOMA LAKES** — Beautiful waterfront Contemporary home, 290' of pristine waterfront. Vaulted ceilings w/water views, only 7 years old, Oak kitchen w/Corian counters, 2 full BA w/stone & tile showers, very elegant throughout. Master suite on 2nd level, 3 season RM, 2BR on 1st level, laundry rm, gentle slope to water w/nice beach for swimming. A REAL MUST SEE!  
MLS #1320954 \$429,900

**WINTHROP** — Cobossee Lake Cottage. Lovely 3 season West shore Cottage with year round access. Easy access, convenient location. Extensively renovated approx. 20 years ago. Electric heat plus a wood stove. Sliding glass doors to the side deck. Wood siding, metal roof, hardwood floors, modern kitchen and bath. Insulated walls. Pretty views of the lake. Lots to enjoy! MLS #1290689 \$249,900

**LITCHFIELD-LAND** - Fantastic opportunity to own 6.2 acres on Woodbury Pond. Property has approx. 740 feet of owned water frontage. Gorgeous south westerly views. Land is at the end of a private dirt road. Keep it all or subdivide down the road.  
MLS #1276011 \$149,999

**SIDNEY-WARD POND** — Quiet and peaceful Ward Pond- minutes from I-95, MaineGeneral Hospital/Civic Center/Marketplace. Pleasant 3BR, 1.5 BA, Gambrel style home on 2 acre lot w/200 feet of waterfront. Moderately private setting. Open DR/LR w/gorgeous stone fireplace. Front screened porch. 24x26 barn garage w/full second floor, 12x20 open shed. Full basement. Nice frontage with a gentle incline into the water.  
MLS #1275808 \$229,900

### ACME LAND SURVEYING, LLC

Professional Land Surveyors • Professional Foresters

108 Fairbanks Rd., Suite 5  
Farmington, ME 04938  
Telephone 207 778-4081  
Fax 207 778-4081  
Email: info@acmelandsurveying.com  
Web: www.acmelandsurveying.com

Hello,

We are contacting you because you may own land located on a water course, such as a lake, pond, river or stream.

Recently the Federal Emergency Management Agency (FEMA) has made some policy changes and will be increasing insurance rates for many property owners who are paying for flood insurance. In many cases FEMA has mapped a homeowner's structure within the flood zone when it actually is located above the base flood elevation (BFE). In these cases a letter of map amendment (LOMA) can be prepared by Acme Land Surveying to try to have the structure and/or parcel taken out of the flood hazard zone. In other cases we find a structure is in the 100-year flood plain but not as significant as rated and an Elevation Certificate can be completed by Acme for the insurance company to set a more favorable rating, reducing annual premiums.

If you are mapped in the flood plain and are not required to purchase flood insurance, this policy change could still affect you. If you should sell your home and the buyer needs to go through a bank and is required to buy flood insurance it would add a monthly insurance cost to their mortgage.

Acme Land Surveying has performed hundreds of Elevation Certificates and LOMAs and has had great success in removing structures from the special flood hazard zone or reducing the rate for our clients therefore saving them hundreds of dollars over time in flood insurance premiums. In many cases the cost of our services is recovered in a year or less with the reduction in premium costs.

If we can assist you with a LOMA, an Elevation Certificate or any other survey needs, including boundary surveys, please feel free to contact us and we would be happy to discuss all your options.

Sincerely,

*Erik Lochmann*

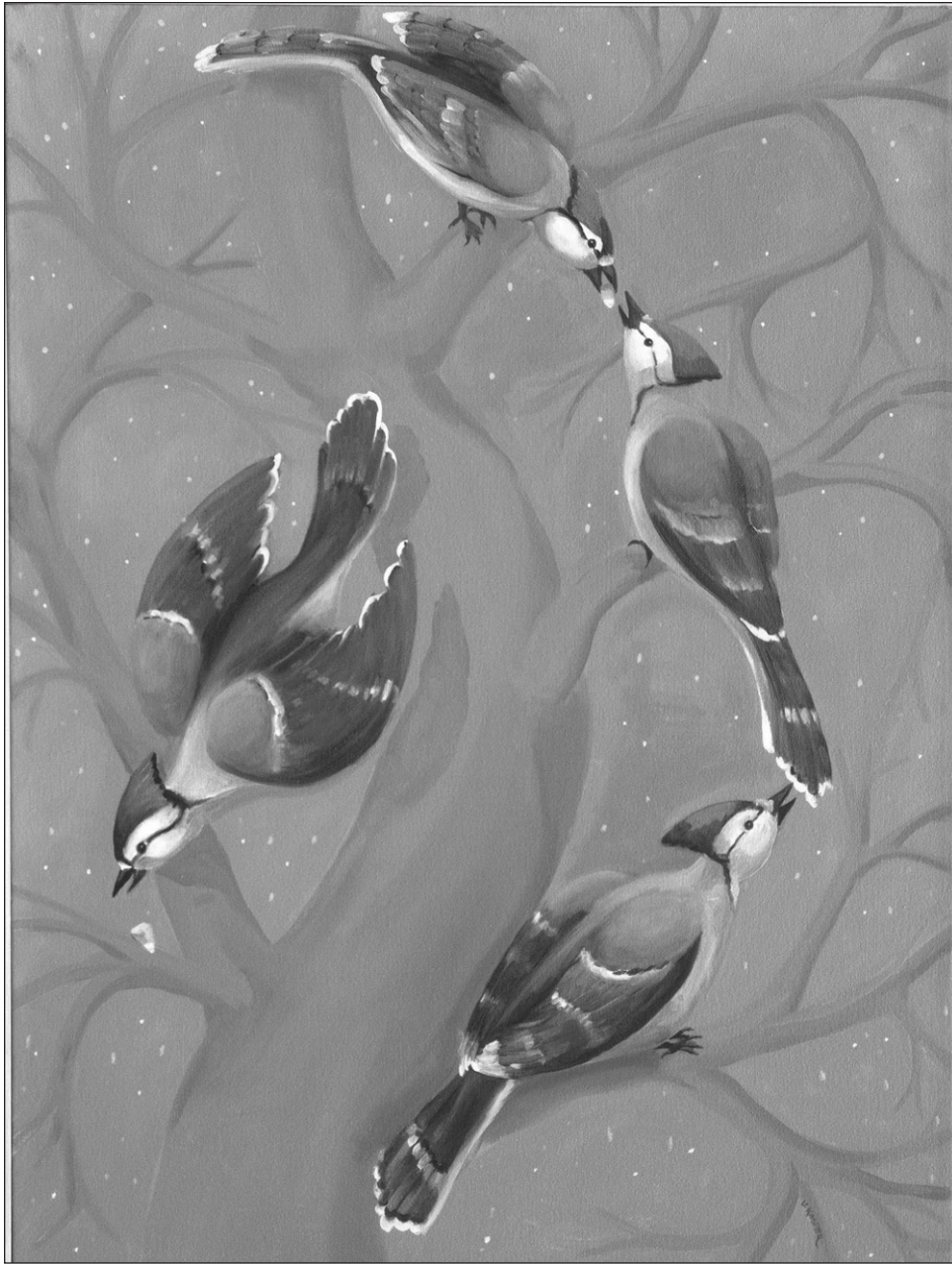
Erik Lochmann  
Project Manager





## “On and Off the Wire: Birds in Urban and Natural Landscapes”

*Opening Reception May 11, 5:30 to 7:30 for Maine Artists Inspired By Birds*



*Jays by Janice Kasper*

The L.C.Bates Museum is excited to share its summer 2018 art exhibition “On and Off the Wire: Birds in Urban and Natural Landscapes” with visitors. We will host an opening reception on Friday, May 11 from 5:30 to 7:30, a time for visitors to meet the artists and enjoy refreshments. The exhibition displays works of art representing birds, as well as bird-related objects--feathers, nests, bird feeders, etc. The exhibition will run until October 15, 2018.

For over a century, visitors to the historic L. C. Bates Museum at Good Will-Hinckley have been captivated by the Audubon Gallery, with its hundreds of colorful and diverse taxidermied birds – including the Maine bird dioramas with backgrounds hand-painted by impressionist Charles Hubbard in the 1920s.

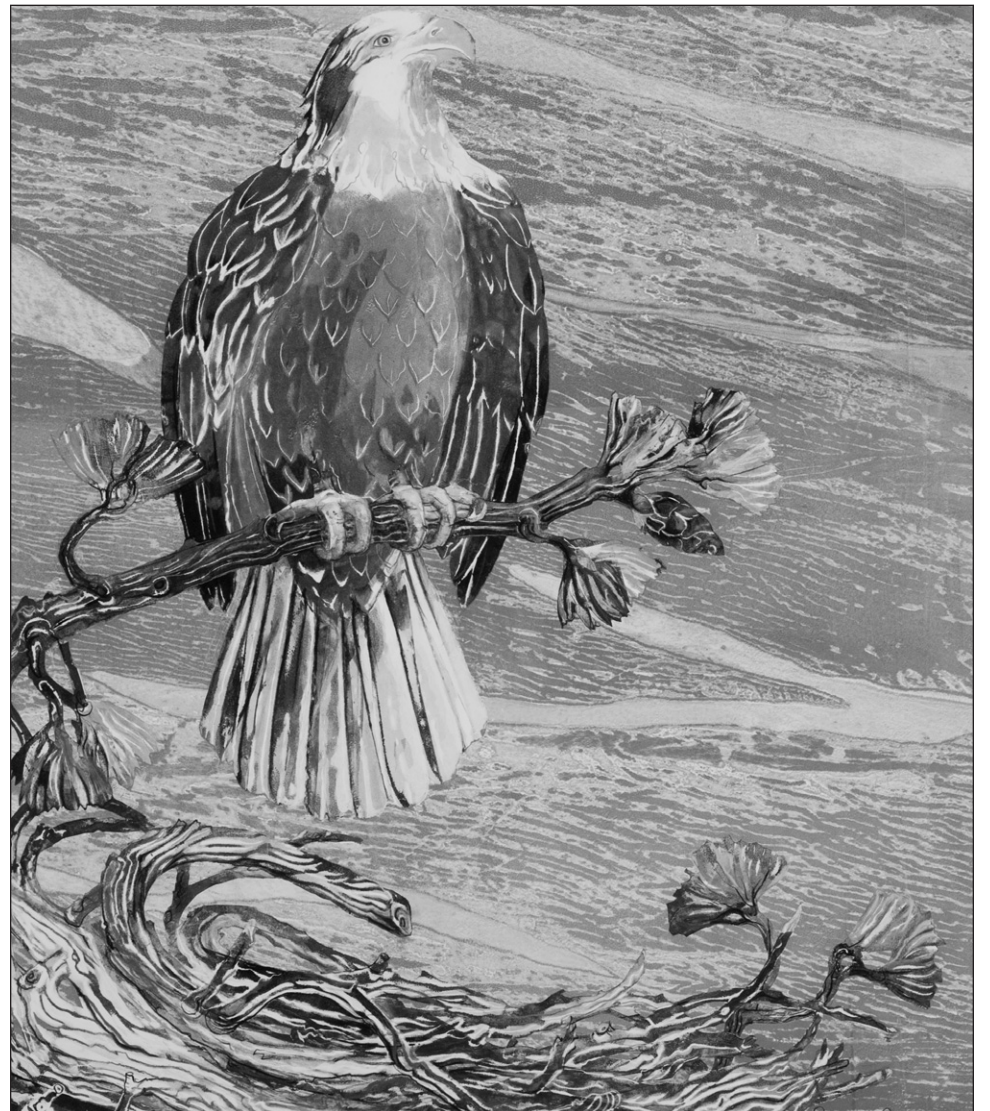
It is only fitting, then, that the Museum’s recently announced summer art exhibition, “On and Off the Wire”, deals exclusively with birds and their role in fine art – as muses, as subjects, and as symbols.

Over twenty Maine artists will show work, depicting birds in a wide array of forms and settings. Contributing artists include Nina Bolen, Milton Christian, Abbott Meader, Sharon Yates, and Holly Berry. For Holly Berry, one of our featured artists, “birds are magical and mysterious to me. I long to touch, hold and hug one but have never had any physical contact with a bird in my life. Actually, I have no true desire to capture and contain such fantastic creatures.” Berry’s linocuts capture in precise and yet playful detail birds’ unique essence.

Over the summer, the Museum also plans to hold several artists’ workshops for children, which will stimulate creativity and shed light on the artistic process. Artist Jon Meader will also offer a Bird Migration program on July 25 in his traveling planetarium.

The exhibition is co-curated by Colby College sophomores Yuzhou Cen and Emily Carter, under the guidance of Professor Véronique Plesch, and has been organized with generous support from the Colby College Center for the Arts and Humanities.

For more information about the L.C. Bates Museum’s summer art exhibition and related programs contact the L.C.Bates Museum at Good Will-Hinckley 207-238-4250 or [lcbates@gwh.org](mailto:lcbates@gwh.org). The L.C. Bates Museum is located on Rt 201 in Hinckley, Maine on the campus of Good Will-Hinckley.



*Eagle Nest by Susan Amons*



**“ The Golden Age is before us, not behind us”  
....William Shakespeare**



**Whether you are 55 or 85  
Our mission is the same...  
Grow and protect your family’s  
treasure for your “Golden Age”**

129 Silver St, Waterville, ME Phone: (207) 873-2200  
[www.goldenpondwealth.com](http://www.goldenpondwealth.com)

Securities offered through LPL Financial, Member FINRA/SIPC





ALUMINUM DOCKS, BOAT LIFTS AND SWIM RAFTS | COMPLETE INSTALLATION SERVICE AVAILABLE  
15 YEAR WARRANTY | FACTORY DIRECT PRICING | FREE DELIVERY\*

## EXCEPTIONAL STABILITY & VERSATILE CONFIGURATION

Create your perfect waters edge experience with the most user-friendly dock systems on the market. ShoreMaster dock systems provide exceptional stability and versatile configuration options, plus features like 5-sided dock legs, QuickConnect™ and welded frames. They're the perfect customizable solution for your waterfront.



LARGEST  
**SHOREMASTER**  
DISTRIBUTOR  
in the COUNTRY

# Hammond Lumber Company

Toll-free 1-866-HAMMOND | hammondlumber.com

AUBURN • BANGOR • BELGRADE • BOOTHBAY HARBOR • BRUNSWICK • DAMARISCOTTA  
FAIRFIELD • FARMINGTON • GREENVILLE • PEMAQUID • PORTLAND • SKOWHEGAN • WILTON

\*In our normal delivery areas. Delivery charge may be applied to outlying areas.

# Lakepoint

REAL ESTATE

207.495.3700

221 Main St.,  
Belgrade Lakes, ME 04918

www.belgradelakepoint.com



With cathedral ceilings, private bathroom with each bedroom, large closets, butcher block counter top and a newly redone back porch for entertaining.  
MLS# 1348512 \$255,000



Messalonskee Lake Custom built log home featuring, 3 bedrooms, three baths, plus a master suite with walk in closet, bonus room, private deck  
MLS# 1338302 \$729,000



Brand new 3 season cottage on Long Pond! Master suite, 2 additional br, 1 br and 1 ba guest cottage with a porch.  
MLS# 1346379 \$725,000



This adorable piece of property is one you can't let pass you by. With two bedrooms an open concept living area and a cozy glassed in porch, and with easy water access to Long Pond.  
MLS# 1344874 \$249,900



With cathedral ceilings, private bathroom with each bedroom, large closets, butcher block counter top and a newly redone back porch for entertaining.  
MLS# 1348512 \$255,000



Great Pond private Hoyt Island retreat featuring custom kitchen, summer kitchen, workshop, fireplace, decks and private dock!  
MLS# 1346891 \$459,000



Rare opportunity to buy 315 feet of frontage on beautiful Long Pond. Comes with a seasonal cottage Year round road.  
MLS# 1320367 \$399,000



Stunning Long Pond year round, contemporary. Family room with gas, stone fireplace and cathedral ceilings.  
MLS# 1332993 \$875,000



Gorgeous estate with 3 bedroom, 2.5 bath main house and 2 bedroom, 1 bath guest house over 2 car heated garage! Sandy frontage on Great Pond  
MLS# 1310458 \$779,000

## GRANITE HILL ESTATES

Part of:  
MaineGeneral Health



Retire your way. Today!  
In a community that cares.

Now's the time to join the family at **Granite Hill Estates**, central Maine's premiere continuing care retirement community and part of **MaineGeneral Health**. Call 207-626-7786 or toll free 1-888-321-1119 today schedule a tour. Offering an impressive menu of amenities:

- Spacious cottage homes and apartments
- Elegant full-service dining plan
- Maintenance and housekeeping services
- Scheduled courtesy transportation
- Social, cultural and educational programs
- Indoor swimming pool complete with hot tub
- Cozy reading room, library and bank
- Attractive game, billiard, and meeting rooms
- Fitness center with an on-site fitness coordinator
- Convenient hair salon, massage spa and meditation room
- Wooded walking trails throughout our 135 acre campus



Holleran National Senior Living Survey



email: info@granitehillestates.com

60 Balsam Drive, Hallowell, ME 04347

207-626-7786

1-888-321-1119

granitehillestates.com



## Can't find your dream home? Then build it.



Apply now and start building today!

Build your dream home with a single-close construction loan from Skowhegan Savings. Lock in your mortgage rate today with up to 95% financing, low closing costs and pay interest only for up to 12 months.\*

Visit us at  
**SkowheganSavings.com**  
or call 800.303.9511

\*Subject to credit approval.



Skowhegan Savings FDIC

Straight Talk. Fair Deals.