

# Summertime in the Belgrades



... Serving the Central Maine Lakes & Kennebec River Corridor

— A Cider Mill Press Publication —

VOLUME 19, NUMBER 5

## Buying the Dream: a Place On a Lake

by Esther J. Perne



There's movement on the lakes this summer - real estate movement - and although there is always a strong ebb and flow of lake property ownership, this season it is being

described as busy, crazy, awesome and good news for everyone.

Cabin, camp or castle, there's something magical almost mythical about a place - a family

place, your own place - on a lake. That's where, it seems, babies sleep more peacefully, where children are raised and absolutely blossom, where teens are influenced to seek summer jobs and

*Continued on page 2*

**Mid-Maine Marine Inc.**  
885 Kennedy Memorial Drive, Oakland, ME 04963  
1/2 Mile West of Exit 127 off I-95 • 1-800-649-2628  
[www.midmainmarine.com](http://www.midmainmarine.com)

**HARRIS**  
IN STOCK  
16, 18, 22, & 24 FT




**PLAY FISH SKI RELAX**

Join us...and help  
protect our lakes!



**Belgrade Lakes Association**  
137 Main Street, Belgrade Lakes, Maine 04918  
207-512-5150 • [www.belgradelakesassociation.org](http://www.belgradelakesassociation.org)

**Hamlin's Marine**



290 West River Road, Waterville • 207-872-5660  
581 Main Road North, Hampden • 207-907-4385  
[www.hamlinsmarine.com](http://www.hamlinsmarine.com)

**YAMAHA**





Continued from page 1

later select a college nearby, where the temptation for working away from the office can be a reality and definitely where retirement beckons.

A place on a lake is also where relatives and acquaintances suddenly want to visit, where it's cool to bring young adult friends home, where simple shenanigans provide memories throughout the other seasons and where serious proposals seal the fate of future generations who will dream of a place on a lake.

Of course, lakeside property is a purchase of love and there are true stories of offers accepted before properties were seriously looked at, and happiness still prevailed. But, love aside, there are factors about lakes that must be considered.

First, fishing. Fish - or rather men (there were yet to be women) who fished and talked - are what put the lakes of Maine on the map. Fish are still a main attraction and there is nothing as rewarding as stepping out the front door, gear in hand, and into your ready and waiting boat...as long as your fish type of preference is also ready and waiting. That's easy enough to check out lake by lake; fishermen still talk.

Next, children. Children are a huge input to buying lake property. Historically, locations with good swimming, safe boating, nearby trails and understanding neighbors were selected to help work off that young energy, often complemented with an area youth camp connection to channel more energy. Today, ditto swimming, boating, trails and neighbors; add in a wealth of day camp and sports camp resources in the region. Other parents and grandparents will happily share the details. Children still have energy.

Finally, all other: View of sunrise vs sunset? One season (summer-only, rustic), 3 season (summer, spring and fall, somewhat heatable) or 4 season (year-round ready) structure? Guest(s) space or lack of? Electronics reception or lack of? Proximity to town or remoteness? Rentable? Renovate-able? Retirement feasible?

Most important, every pond is a golden pond when the sun shimmers across the water and another fun day is done and every cabin, camp or castle on a lake, pond or stream is a dream.



**Bearnstow**  
On Parker Pond, Mount Vernon, Maine

## Public Events Calendar Summer 2017

June 19-23: Natural History Week at Bearnstow

### Wednesday Classes at the Mount Vernon Community Center (All classes are at 7:30 p.m. and free to all.)

- June 28: Ruth Grauert: "Shape, Space, Time, and Motion"
- July 5: Véronique MacKenzie: "We All Can Dance"
- July 12: Peter Kyle/Scott Guigere: "Slow Tempo"
- July 19: Robin Gilmore "Exploring How We Move"
- July 26: K.J. Holmes: "Creative Performance"
- August 2: Claire Porter: "Writing and Moving"
- August 9: Sara Pearson & Patrik Widrig: "Improvisation and Choreography"
- August 16: Cathy Nicoli: "Bodies in Space and Place"
- August 28: Jonathan Trejo: "Exploring Folkloric Dance"

### Friday Performances at Bearnstow, 84 Bearnstow Road (All events are at 7:30 p.m. unless otherwise noted and are free.)

- June 30: "Climate Change and Habitat Fragmentation of Maine Bees," presented by biologist Matt Scott
- July 7: Day Camp Performance at 3:30 p.m.
- July 7: Grauert/Mackensie Performance
- July 14: Peter Kyle/Scott Guigere Performance
- July 16: Songwriter/guitarist Gary Wittner and saxophonist Gideon Forbes in Concert
- July 21: Robin Gilmore Performance
- July 28: K.J. Holmes Performance
- August 4: Claire Porter Performance
- August 11: Pearson-Widrig Performance
- August 18: Cathy Nicoli Performance

### Formal Performances at the Union Hall in Vienna, Maine

- August 26: Jonathan Trejo (from Mexico): A Concert of Mexican Folklorico at 7:30 p.m.
- September 2: Bearnstow Artist Residents Performance at 7:30 p.m.

All events are open and free to the public.  
Bearnstow is a 501(c)(3) nonprofit organization. Tax-deductible contributions are gratefully accepted.  
For more information: please visit [www.bearnstow.org](http://www.bearnstow.org) or phone 207-293-2280.

## Bear Spring Camps

Lakeside cabins on Great Pond in the heart of the  
Belgrade Lakes Region



~Fishing ~Swimming~Tennis~Boat Rentals~ Sand beach~Home cooked meals~

[www.bearspringcamps.com](http://www.bearspringcamps.com) ~207.397.2341~60 Jamaica Point Rd, Rome, ME 04963



**MICHAEL  
BREAU**

Creative  
solutions for  
all your Mac needs

**Macintosh and iOS  
support, based in  
Western Maine,  
working onsite throughout Maine**



If you have Macs, iOS devices, software or network problems, websites you'd like built, or any ideas you would like to implement using Macintosh computers, give me a call and we can discuss if I can help...

207-578-0226 • [www.michaelbreault.net](http://www.michaelbreault.net)



*Great family care, as unique  
as you are—how convenient.*

With locations in Waterville, Oakland, North Anson, Unity and Madison, **we're right down the street** from where you work or live. And with personal attention for every patient, not to mention a direct connection to the world-class specialists of EMHS, it's no wonder more of your neighbors are turning to Inland Family Care.

**Welcoming new patients today!**

Call our Provider Finder Service at 800-914-1409  
or email us at [inlandproviderfinder@emhs.org](mailto:inlandproviderfinder@emhs.org).



**Inland Family Care**

A Department of Inland Hospital

EMHS MEMBER



[inlandhospital.org](http://inlandhospital.org)

Offices in Waterville, Oakland, North Anson, Unity and Madison





Table of Contents

Buying the Lakeside Dream..... 1-2

Table of Contents..... 3

Are You Buff Enuf??..... 3

The Luckiest Boy: Local Characters of Bygone Days..... 4

Take It Outside:Grandkids and Loon Chicks ..... 5

Directory of Great Visits: Get Up, Get Out and Go..... 6-7

The Dams Keeper Report..... 7

Calendar of Events: Something For Everyone ..... 8-9

The Kennebec Corridor Map..... 9

Statewide Fishing Derby..... 9

Belgrades and Beyond Map..... 10-11

Upcoming; A busy July and August..... 12

Conservation Too: Invasive Bugs in the Woods..... 13

Accommodations: Near a Lake, Hear a Loon ..... 14

Notebook: Random But Newsworthy ..... 14-15

Dining and Eating and Picnicking, Too..... 15

Business Directory: Shops, Services and More.....16-17

Atlantic Music Festival at Colby College, Waterville..... 18

August's Holocaust Center Seminars..... 19

Real Estate and Views..... 19

Are You Buff Enough  
How to Become LakeSmart-er Workshop III

by Jodie Mosher-Towle



Nathan Durant, Youth Conservation Corps director, shares how infiltration steps installed by YCC on the embankment to North Pond behind Fairview Grange #342 in Smithfield to participants of Are you Buff Enough? How to Become LakeSmart-er Workshop in 2016. (Photo by Jodie Mosher-Towle)

The North Pond Association, is pleased to announce the first of many workshops and educational events in its newly acquired 10-year Watershed-Based Protection Plan (WBPP) for North and Little Ponds. The *Are You Buff Enough? How to Become LakeSmart-er Workshop* is designed to help property owners watershed wide, on the water or not, to look at their property from a ‘health of the lake’ point of view. Read on!

North Pond Association’s membership voted to help fund the approximate \$10,000 cost of a shoreline survey of the entire lake at the annual association meeting last August with some of the cost covered by grant money. Jennifer Jesperson of Ecological Instincts in central Maine was hired to organize and help NPA perform the survey. Her expertise was not only necessary but also above and beyond our expectations.

As a result, we know that our lake is exposed to nutrient loading, which is the cause of algae blooms, from many different areas around the 9 miles of shoreline and we have pinpointed the ‘hot spots’. Now the NPA is now eligible to apply for state and federal funding to make improvements to the shoreline, and other areas where there are erosion and run off concerns.

All shoreline property owners that opted to participate received follow up reports on how their property fared. There were 81 letters sent to participants explaining what the problems were and recommendations were made on ways to fix them, based on LakeSmart Best Management

Continued on page 13...

**Summertime in the Belgrades**

--A Cider Mill Press Publication--  
PO Box 290, Belgrade Lakes, ME 04918  
Editor: Esther J. Perne, 207-495-3777 • ebelnews@earthlink.net  
Advertising Director: Erle Morse, 207-495-3777 • ebelnews@earthlink.net  
Layout Design: Michael Breault, 207-578-0226 • mo.breault@gmail.com  
Webmaster : Gregor Smith • gregor@roadrunner.com  
[www.sumbelnews.com](http://www.sumbelnews.com)

This publication is copyrighted ©MMXVII, Cider Mill Press Publications, All Rights Reserved.

**CSS Cayer**  
Security Services, Inc.

**COMMERCIAL & RESIDENTIAL**  
Burglary & Fire Alarm Systems  
Video Surveillance & CCTV  
Access Control  
24 Hour UL Listed Monitoring Service

**453-9177**  
[www.cayersecurity.com](http://www.cayersecurity.com)

**NORTH BAY ESTATES**  
ROUTE 8 • NORTH BELGRADE

~ **FOR SALE** ~

**Custom Built Homes**  
by *Craig's Carpentry*  
1 & 2 acre lots  
with lake views from  
Great Pond overlook  
*Craig Alexander*  
cell (207) 649-3749 • [crgsnbe@yahoo.com](mailto:crgsnbe@yahoo.com)

**BELGRADE REGIONAL HEALTH CENTER**

*New Patients  
of All Ages  
Welcome*

**4 Clement Way (off Rt. 27), Belgrade**  
**207-495-3323 | [BelgradeCHC.org](http://BelgradeCHC.org)**





## —The Luckiest Boy—

## Memories: More Local Characters of Days Gone By

by Rod Johnson

After three summer seasons and 36 stories from The Luckiest Boy, I thought perhaps the fodder of story material was running thin. Just when the barrel seemed about empty, one of the old timers that were still hanging on around Belgrade Lakes in the middle of the last century comes to mind. I've mentioned many of them in the Guides stories and you've seen pictures of many of them as well. This season I decided to tell you about at least three of the characters that stand out in my memories as being characters never to be forgotten.

**CASS FRENCH:** Cass, often referred to as Cassie or Cass the Baitman lived on School Street in Belgrade Lakes with his wife Grace up through the 1960's. They had one daughter, Louise, who I believe moved to California when she became an adult. Cass and Grace lived a quiet, minimalistic life in the small wooden house right beside the 2-room school house located on School St. in Belgrade Lakes. We saw them daily as we all went to that school up through the 5th grade before being moved down to Belgrade Depot for 6th grade thru high school. Gracie, as she was mostly called, always had a nice wave as the kids paraded past her house. Their house still exists today as does the school house, though the school house was phased out and became the first Belgrade Regional Health Center back in the 1970's. I remember Cassie as a short man with a great smile, perhaps one or two teeth left in front, a craggy face that made kids feel safe and not scared, like might be so with some older men. He was missing part of a finger and we kids always secretly talked about how and why that was the case. Oh, and always the tobacco juice creeping out of one corner of his mouth. Cass, like his cohort Clyde Dalton, usually smoked a corn cob pipe with George Washington pipe tobacco. They both claimed that George Washington was the best "cause you kin smuck (their word) it or chew it." Cassie never sported a beard, but always had at least 3 days of growth on his face and some tufts of gray or whitish hair peeking out around all sides of his felt crusher hat.

Cass's primary employment during the summer season was pickin' and sellin' fishing bait. This included night crawlers, frogs, crawfish and hellgrammites (the larva stage of the Dobson fly). Fishing was still quite popular in the

50's and 60's and the demand for bait was considerable. Cass picked much of the bait he sold but he also bought from other pickers, many of whom were the kids in the village that had acquired the skills to catch the critters. Cass was always friendly to all of us, even when we went to his house at odd hours to sell him our catches. Sometimes it was a big sale like 2 dozen crawfish at 5 cents each or 100 crawlers at 1 cent apiece. Older kids could even catch a dozen hellgrammites, though catching them was difficult and required some equipment. They are found under rocks in a stream and require putting a screen down stream and turning rocks upstream so the hellgies wash into the screen. Most any time if we were bored or needed money for a soda, we could easily catch crawfish at night down at the old spillway. Using a flashlight while wading around, we would slowly turn over rocks with hopes to expose some of the critters. Catching them had its tricks but it didn't take long to get a dozen or more. Another way to make easy money was catching night crawlers on smooth grass that had been mowed, so we all hit the original Belgrade golf course. After the hotel burned in 1956 the fairways were no longer mowed and picking there was over. My Uncle Al Johnson often went to the Augusta golf course and in 3 or 4 hours would pick a thousand crawlers. Cass could be found each morning hanging out beside his old truck right across from Day's Store. Before Cass got his 52 Chevy pickup, he always drove a Ford Model A coupe. People and guides came wandering down from the Belgrade, Lakeshore and Locust House hotels to get their bait for the morning fish. By noon Cass went home and rested up to pick more bait later in the day and at night.

Grace outlived Cass by a few years and eventually went to live with her daughter. Uncle Al took over the bait business, truck included, and later my cousin Cary took it over from his dad. As the summers went by, less and less fishing and more artificial bait rendered the bait business no longer profitable.

Cass was a WWI combatant and was buried in the Veteran's Cemetery, Augusta, Maine. There's a picture of him selling bait on page 79 of my earlier book Luckiest Boy Season II, complete with crusher hat and corn cob pipe! Hats off to Cassie French the Baitman.



### Experience the Legend



New England's only  
distiller of Absinthe

Maine's Best Spirit, 2016  
—Down East Magazine

152 Fairfield Street, Oakland, ME 04963  
[www.treespiritsofmaine.com](http://www.treespiritsofmaine.com)

Join us ... and help protect our Lakes



Raffle for the Lakes – Buy your tickets now!  
Drawing August 6



First Prize \$30,095 Edendriver  
With motor and trailer



Raffle table by the Post Office  
Belgrade Lakes – come on down!

137 Main Street, Belgrade Lakes, Maine 04918  
207-512-5150 [www.belgradelakeassociation.org](http://www.belgradelakeassociation.org)





## — Take It Outside —

## Grandkids and Loon Chicks Back on the Lake

by Pete Kallin

Last week began with a couple of days in Orono at the Maine Lakes Society's annual meeting. The Maine Lakes Society, on whose board I serve, is a statewide nonprofit membership organization dedicated to the protection of all of Maine's lakes through science-based education, advocacy, and action. The only other statewide lakes nonprofit is the Maine Volunteer Lake Monitoring Program (VLMP), for which I am a volunteer water quality monitor. The VLMP trains, certifies and provides technical support to hundreds of volunteers who monitor a wide range of indicators of water quality, assess watershed health and function, and screen lakes for invasive aquatic plants and animals. Formed in 1971, Maine's VLMP is the longest-standing state-wide citizen lake monitoring program in the U.S., as well as one of the largest, with more than 1,200 active volunteers monitoring more than 500 lakes statewide. On Sunday morning, I was recertified for taking temperature oxygen profiles. I collect dissolved oxygen (DO) and temperature profiles every two weeks. That information not only helps monitor lake conditions, but gives me insight into where the fish (especially salmon and trout) will be hanging out.

Now that school is out I also get to spend a little more time with my grandkids. My grandson, Nathan, came to visit for a couple of days while his sister was attending an acting camp.

*Continued on page 12...*



Grandson, Nathan, with Long Pond Bass



Bass caught by Grandpa with photo by Nathan.

**FOR SALE**  
**HOANG**  
**REALTY**  
**623-0623**



Amy Gray:  
478-8921



Dave Barnard:  
441-8486



Erica O'Connor:  
485-0277



Hoa Hoang:  
485-1485



George O'Connor:  
438-1674



Gail Dostie:  
242-2017



Heidi Witham:  
465-5764



Karen Ramsay:

I have lived a majority of my life in Central Maine except for brief stints in Pennsylvania and Connecticut. I am married and have three daughters,

all of whom I'm very proud of. We love to spend time together - whether it be camping, vacationing, or attending various events our daughters participate in.

Throughout the years, I have always thought real estate would be a great fit for me but wanted to raise my family first. In 2016 I decided it was time, and boy was it. In my real estate debut, I was named Rookie of the Year and reigned in the New Year as Realtor of the Month. My family, friends and clients say I have found my calling. Because of my outgoing personality I have the ability to make long-lasting relationships with each client I meet.



### BELGRADE

EXTRAORDINARY CUSTOM BUILT HOME WITH 10 PLUS ACRES! This lovely home has many notable features 4 bedrooms, grand foyer, spacious living room with fireplace & built-ins, formal dining with built-ins, stylish designed eat-in kitchen, large deck off the kitchen & living room and 2 car garage. Gorgeous landscaped yard with rock walls. Association includes a fabulous clubhouse on Great Pond, mooring for a boat, tennis courts, sandy beach for swimming and fishing. Your spectacular sunset views are awaiting you! MLS# 1302196 \$595,000



SOLD — \$142,900

### BELGRADE

A sunshiny Cape complete w/ a welcoming kitchen which provides plenty of cabinet space. Kitchen is open to diningrmw/ doors to the back deck, hot tub & views of a magnificent magnolia tree. A spacious living rm, 2BA, 3BR, ea w/ generous walk in closets. Lg family rm in daylight basement w/ stone fireplace, a laundry area & workshop. Heated garage w/ access to basement.



SOLD — \$187,500

### READFIELD

Impressive 1800's Federal style home situated on 9 acres of gently rolling fields, trees, and lush greenery. This historic home is meticulously cared for with many new updates including kitchen (gorgeous cherry cabinets and quartz countertops), wiring, water heater, flooring, oil tank, new septic, roof and much more. Beautifully crafted Russian fireplace.



SOLD — \$223,500

### MANCHESTER

Beautiful Dutch-Colonial style home with lots of character & a nice layout for entertaining. The warm, inviting main living area flows from an updated kitchen through the dining area & into a large living room. Relax on the back deck overlooking park-like grounds & a small orchard, or in the man-cave/garage workshop. A 1st floor bedroom & 1st floor bath/laundry makes single level living an option.



Karen Ramsay:  
441-8186



Lisa Hicks:  
592-5374



Loretta Burk:  
458-0910



Merline Douglas:  
485-0138



Pam Armour:  
314-7445



Patrice Lessard:  
314-5976



Remy Henry:  
242-9842



Sarah Allarie:  
242-9842



Tanja McCarthy:  
660-5427





## Calendar Directory

### TOWN BY TOWN...

GREAT VISITS, AWESOME OUTINGS – ART, MUSIC, CULTURE, HISTORY, RECREATION, FARMERS' MARKETS, TRAILS, SCENIC SITES, AND MORE...

#### AUGUSTA

- **Viles Arboretum**, 224 acres with 6 miles of year round walking trails, including art and sculpture trail, open dawn to dusk, Visitor Center open Monday-Friday, 9 am-4 pm, admission free, 626-7989, [www.vilesarboretum.org](http://www.vilesarboretum.org), 153 Hospital Street
- **Farmers' Market at the Arboretum**, indoors, Friday 1-5 pm
- **Art in the Capitol**, Maine Arts Commission monthly self-guided exhibits in State House hallways (Mon-Fri 8 am-5 pm), Blaine House (call for times), and Maine Arts Commission Office (8:30am-4:30 pm), 287-6746, [mainearts.maine.gov](http://mainearts.maine.gov)
- **Children's Discovery Museum**, CDM, hands-on displays, activities, Tuesday-Thursday 10 am-4 pm, Friday-Saturday 10 am-5 pm, Sunday 11 am-4 pm, admission, 622-2209, [www.childrensdiscoverymuseum.org](http://www.childrensdiscoverymuseum.org), 171 Capitol Street
- **Danforth Gallery**, Jewett Hall, art exhibits, UMA-1234, [www.uma.edu](http://www.uma.edu)
- **Governor's Mansion**, 1830 Blaine House, Tuesday-Thursday 2-4 pm, 287-2121, [www.blainehouse.org](http://www.blainehouse.org), State Street
- **Holocaust and Human Rights Center of Maine**, Michael Klahr Center, Monday-Friday 8 am-4 pm, 621-3530, [www.hhrc.uma.edu](http://www.hhrc.uma.edu), University of Maine at Augusta, off Route 27
- **Kennebec Historical Society**, Wednesday-Friday 10 am-2 pm, 622-7718, [www.kennebechistorical.org](http://www.kennebechistorical.org), 107 Winthrop Street
- **Maine State Museum**, Tuesday-Friday 9 am-5 pm, Saturday 10 am-4 pm, \$2 adults, \$1 ages 6-18, 287-2301, [www.maine.statemuseum.org](http://www.maine.statemuseum.org)
- **Maine State House**, Hall of Flags, House and Senate Rooms, Klir Beck dioramas, Monday-Friday 8 am-5 pm, book tours at Maine State Museum, walk-ins welcome 9 am-1 pm, 287-5600, [www.maine.gov](http://www.maine.gov), State Street
- **Maine State Library**, Monday-Saturday opens 9 am, 287-5600, [www.maine.gov/msl/](http://www.maine.gov/msl/), State Street
- **Museum in the Streets**, walking/history tour, [www.augusta-maine.gov](http://www.augusta-maine.gov), Water Street/downtown.
- **Old Fort Western**, 1754 fort, house, store, 1-4 pm daily, admission \$6, 4-14 years \$4, 626-2385, [www.oldfortwestern.org](http://www.oldfortwestern.org), Cony Street
- **Riverfront Park**, boat launch, Greenway Trail, playground, eastside Kennebec River
- **Kennebec River Rail Trailhead**, Maine State Housing Authority parking lot, 623-8162, [www.krrt.org](http://www.krrt.org), Water Street
- **University of Maine at Augusta Fitness Trail**, 2 miles of wooded trails, near Civic Center, Route 27
- **Farmers' Market at Mill Park**, Tuesday 2-6 pm, 626-2305, [www.farmersmarketmillpark.org/](http://www.farmersmarketmillpark.org/), North Water Street
- **Farmers' Market at Turnpike Mall**, 549-5112, Wednesday and Saturday 10 am-1 pm, Western Avenue

#### BELGRADE LAKES

- **Belgrade Lakes Market**, 320-8303, [careybor@yahoo.com](mailto:careybor@yahoo.com), Sunday 8 am-1 pm, Main Street
- **Great Pond Mailboat**, 592-1537, Monday-Saturday 10 am,

Post Office, Main St.

- **The Belgrade Community Center for All Seasons**, pool and lakefront, gym, playground, picnic area, rec programs, 495-3481, [www.belgrademaine.com](http://www.belgrademaine.com), 1 Center Drive
- **Union Church Coffee House**, check for schedule, 7:30 pm, \$5, 495-3599, [www.unionchurchmaine.org](http://www.unionchurchmaine.org), Main Street
- **Belgrade Historical Society**, 495-2973, [belgradehistoricalsociety.org](http://belgradehistoricalsociety.org)
- **Belgrade Lakes Market**, Sun 8 am-1 pm, Main Street
- **Peninsula Park on Long Pond**, picnic tables, Main Street
- **Maine Lakes Resource Center**, 512-5150, [www.maine.lakesresourcecenter.org](http://www.maine.lakesresourcecenter.org), 137 Main Street

#### FAIRFIELD

- **Fairfield Historical Society**, 1890 Cotton-Smith History House, every Tuesday 9 am-12 noon and 1-4 pm and second Saturday of month, 453-2998, [www.fairfieldmehistoricalociety.net](http://www.fairfieldmehistoricalociety.net), 42 High Street
- **Farmers' Market**, 948-5724, Wednesday 2-6 pm, Saturday 9:30 am-1:30 pm, Nazarene Church parking lot, 81 Main Street

#### FARMINGTON

- **Farmington Historical Society, Titcomb House Museum**, 778-4275, Wednesday and Saturday, 11 am-2 pm, July-August, [www.farmingtonhistory.org](http://www.farmingtonhistory.org), 118 Academy Street
- **Nordica Homestead Museum**, opera singer Lillian Nordica costumes, jewelry, mementos, 778-2042, Tuesday-Saturday 10 am-12 noon and 1-5 pm, Sunday 1-5 pm, [www.lilliannordica.com](http://www.lilliannordica.com), 116 Nordica Lane, Holley Road
- **Contra Dance**, 491-9928, [www.starleft.org](http://www.starleft.org) 2nd Saturday of the month, all welcome, 6:30-7:30 pm family dance, 8-11 pm regular dance, admission, Grange Hall, Bridge Street, Route 43, West Farmington
- **University of Maine campus and Arboretum**, four walking tours with informal guide pamphlet to campus trees, 581-1541, [www.umaine.edu/arboretum/](http://www.umaine.edu/arboretum/), downtown
- **Farmers' Market**, 778-6602, Friday 9 am-2 pm, Better Living Center parking lot, Front Street; Saturday 8 am-12 noon, Main Street
- **Meetinghouse Park and Gazebo**, weekly concerts throughout summer, downtown
- **Fairgrounds**, events throughout summer, Franklin County Fair in September, High Street

#### GARDINER

- **Artdogs and Circling the Square Fine Art Press**, Friday 1-5 pm, Saturday 10 am-4 pm, 582-6600, [www.theartdogs.com](http://www.theartdogs.com), 275-277 Water Street
- **Johnson Hall Performing Arts Center**, 582-7144, [www.johnsonhall.org](http://www.johnsonhall.org) 280 Water Street
- **Monkitree**, art exhibits, 512-4679, [www.monkitree.com](http://www.monkitree.com), Tuesday-Friday 10 am-6 pm, Saturday 12-6 pm, 263 Water Street
- **SpinOff Studio**, 588-7297, [spinoffstudio.org](http://spinoffstudio.org), Monday-Friday 8:30 am-4:30 pm, 405 Water Street
- **Farmers' Market**, 512-8022, [www.gardinerfarmersmarket.org](http://www.gardinerfarmersmarket.org), Wednesday 2-6 pm, rain or shine, The Common
- **Kennebec River Rail Trail**, 623-8162, [www.krrt.org](http://www.krrt.org), access near Gardiner/Randolph Bridge, 6.5 miles to Augusta
- **Waterfront Park**, picnicking, events throughout summer, Kennebec River

#### GREENE

- **Araxine Wilkins Sawyer Memorial**, free entertainment programs, monthly - Friday 2 and 7 pm, 946-5311, [www.sawyer-foundation.com](http://www.sawyer-foundation.com), 371 Sawyer Road, off Route 202

#### HALLOWELL

- **Harlow Gallery**, Kennebec Valley Art Association, 622-3813, [www.harlowgallery.org](http://www.harlowgallery.org) Wed- Sat, 12-6 pm, 160 Water Street
- **Gaslight Theater**, 626-3698, [www.gaslighttheater.org](http://www.gaslighttheater.org) City Hall, 1 Winthrop Street
- **Museum in the Streets**, history/walking tour, [www.historichallowell.org](http://www.historichallowell.org), downtown
- **Farmers' Market**, 622-1350, Sun 3-6 pm, Water Street
- **Vaughn Woods and Homestead**, 166 acre park/trails/homestead, Middle Street
- **Kennebec River Rail Trail**, [www.krrt.org](http://www.krrt.org), to Augusta, Farmingdale/Gardiner, Water Street
- **Waterfront Park**, deck/walkway on Kennebec River, North Water Street

#### HINCKLEY

- **L.C. Bates Museum at Good Will-Hinckley School**, early 20th century natural history and cultural exhibits, nature trails and camps, adults \$3, up to 17 years \$1, 238-4250, [www.gwh.org](http://www.gwh.org) Wednesday-Saturday 10 am-4:30 pm, Sunday 1-4:30 pm, Route 201

#### KINGFIELD

- **Ski Museum of Maine**, 265-2023, [www.skimusuemofmaine.org](http://www.skimusuemofmaine.org), 256 Main Street
- **Stanley Museum**, 265-2729, [www.stanleymuseum.org](http://www.stanleymuseum.org), memorabilia/displays on photographs, violins and Stanley Steamers, Tuesday-Sunday 1-4 pm, 40 School Street

#### LIVERMORE

- **Washburn-Norlands Living History Center**, 18th-19th century mansion/farmstead/schoolhouse, library, chapel, 897-4366, [www.norlands.org](http://www.norlands.org), admission, living history tours Tuesday and Thursday 1-4 pm, 290 Norlands Road

#### MADISON

- **Lakewood Theater**, Maine's Summer Theater, Young Performers Camp, 474-7176, [www.lakewoodtheater.org](http://www.lakewoodtheater.org), Route 201
- **Skowhegan School of Painting and Sculpture**, 474-9345, [www.skowheganart.org](http://www.skowheganart.org), summer evening artists lecture series, East Madison Road

#### MONMOUTH

- **Monmouth Museum**, local and regional Maine history, Wednesday-Sunday 1-4 pm, 933-2287, [www.monmouthmuseum-minc.org](http://www.monmouthmuseum-minc.org), 751 Main Street
- **The Theater At Monmouth**, The Shakespeare Theater of Maine, Cumston Hall, 933-9999, [www.theateratmonmouth.org](http://www.theateratmonmouth.org), Main Street

#### MOUNT VERNON

- **D.E.W Animal Kingdom**, Zoo, 293-2837, 918 Pond Rd, Route 41

#### NEW PORTLAND

- **Nowetah's American Indian Museum and Craft Shop**, 628-4981, [www.nowetahs.webs.com/](http://www.nowetahs.webs.com/), daily 10 am-5 pm, free,



Elliot B. Thayer, PLS, PE  
Andrew Dunbar, PLS, LPF, LSE  
RESIDENTIAL & COMMERCIAL  
SITE DESIGN  
STATE & LOCAL  
PERMIT APPLICATIONS  
PREPARED & PRESENTED  
17 Hasson Street  
Farmingdale, ME 04344  
582-7762  
[www.thayereng.com](http://www.thayereng.com)



**MOSQUITO BANDITOS**  
207-613-5656

Protect your children and pets from:

Zika, West Nile Virus, Encephalitis, Heart Worms  
Anaplasmosis, Lyme Disease, Powassan Virus

ENVIRO FRIENDLY TICK, BLACK FLY & MOSQUITO CONTROL  
[www.mosquitobanditos-maine.com](http://www.mosquitobanditos-maine.com)

## PAUL HANNA'S PLUMBING



207-495-3805

New Homes and Remodels ~ Camps  
Water and Sewer Pumps ~ Water Filtration  
Paul Hanna, Licensed Master Plumber





628-4981, 2 Colegrove Road, Route 27

- **Wire Bridge**, 1864, probably only wire suspension bridge in U.S., off Route 27

NEW SHARON

- **Farmers’ Market**, Saturday 9 am-1 pm, Douin’s Market, 491-9025, 150 Mercer Road, Routes 2/27
- **New Sharon Historical Society**, Saturday 1-3, 778-4167, Routes 2/27

NORRIDGEWOCK

- **Norridgewock Historical Society Museum**, 1838 building, Saturday 10 am-1 pm, 634-5032, [www.norridgewockmuseum.com](http://www.norridgewockmuseum.com), Mercer Road, Route 2
- **Oosoola Park**, picnic area, great playground, boat launch, on Kennebec River, Route 8

OAKLAND

- **Macartney House Museum, Oakland Area Historical Society**, 465-7549, Wednesday 1:30-4:30 pm, 1815 home with antique furnishings and Oakland artifacts, 25 Main Street
- **Town Parks**, playground, picnic tables, swimming area, boat launch area, Belgrade Road on Lake Messalonskee and McGrath Pond Road on McGrath Lake
- **Farmer’s Market**, Friday 2-6 pm, 465-3094, Pine Acres Parking Lot, 895 Kennedy Memorial Drive

READFIELD

- **Readfield Historical Society and Museum** in 1853 school-house, 685-4662, [www.readfieldhistorical.org](http://www.readfieldhistorical.org), Thursday and Saturday 10 am-2 pm or by appointment, Route 17, Readfield Depot

ROME

- **Mt. Philip Grange**, suppers 3rd Sat of month, 4:30-6 pm, all you can eat beans, cornbread, rolls, chop suey, pies, Routes 135/225
- **Trails**: Mount Philip, Route 225; The Mountain, Route 27; French's Mountain and Kennebec Highlands, Watson Pond Road; for information call 495-6039 or visit [www.belgradelakes.org](http://www.belgradelakes.org); maps available at BRCA, 137 Main Street, Belgrade Lakes

SIDNEY

- **New England Music Camp**, concerts free and open to the public, Bowl-in-the-Pines on Lake Messalonskee, 465-3025, [www.nemusiccamp.com](http://www.nemusiccamp.com), 8 Goldenrod Lane, Route 23
- **Sidney Historical Society**, 724-8032, [www.sidneyhistoricalociety.org](http://www.sidneyhistoricalociety.org), 2986 Middle Road
- **Silver Spur Riding Club**, horse shows, River Road, Route 104

SKOWHEGAN

- **Margaret Chase Smith Library**, residence, home, museum exhibits, 474-7133, [www.mcslibrary.org](http://www.mcslibrary.org), free, Monday-Friday, 10 am-4 pm, 54 Norridgewock Ave.
- **History House Museum**, 1800s local history and culture, heirloom gardens, free, Tuesday-Saturday, 10 am-4 pm, 474-6632, [www.skowheganhistoryhouse.org](http://www.skowheganhistoryhouse.org), 66 Elm Street
- **Fairgrounds**, weekly horse shows/competitions, free public events, covered arena, Skowhegan State Fair in August, 474-3621, Madison Avenue, Route 201
- **Farmers’ Market**, Wednesday 3-6 pm, Saturday 9 am-1 pm,

weekly entertainment, 938-3906, Somerset Gristmill parking lot, downtown

SMITHFIELD

- **Fairview Grange**, 362-2791, Route 8
- **Smithfield History Society “The Groves House,”** 634-4392, 21 Lakeview Drive
- **Sunbeam Roller Rink**, 362-4951, 830 Village Rd, Route 8
- **Sunset Camps**, public beach, 362-2611, [www.sunsetcamps.com](http://www.sunsetcamps.com), 834 Village Road, Route 8

UNITY

- **Unity College Centre for the Performing Arts**, folk genre music, 568-3147, [www.unitymaine.org](http://www.unitymaine.org), 42 Depot Street

WATERVILLE

- **Aqua City Actor's Theatre (ACAT)**, 873-7000, [www.acattheatre.org](http://www.acattheatre.org). Waterville Opera House Studio Theater, Main Street
- **Museum in the Streets**, downtown history/walking tour, [www.themuseuminthestreets.com/waterville.htm](http://www.themuseuminthestreets.com/waterville.htm)
- **Head of Falls Park/Two Cent Bridge**, historic foot bridge over Kennebec River connecting Waterville and Winslow, Front Street
- **Common Street Arts**, 872-2787, [www.commonstreetarts.org](http://www.commonstreetarts.org), Wednesday-Friday 12-5 pm, Saturday 11 am-1 pm, 93 Main Street
- **Colby College Museum of Art**, 859-5600, [www.colby.edu/museum/](http://www.colby.edu/museum/) Tuesday-Saturday 10 am-5 pm, Sunday 12-5 pm, free admission, Colby College Campus, Mayflower Hill
- **Colby College Special Collections**, Miller Library, Monday-Friday 10 am-12 noon and 1-4 pm, free admission
- **Thomas College Art Gallery**, 180 West River Road
- **Waterville Historical Society and Redington Museum**, 1814 home and pharmacy, 872-9439, [www.redingtonmuseum.org](http://www.redingtonmuseum.org). Tuesday-Saturday tours at 10 and 11 am, 1 and 2 pm, 62 Silver Street
- **Waterville Opera House**, 873-7000, [www.operahouse.com](http://www.operahouse.com), 93 Main Street
- **Farmers’ Market**, Thursday 2-6 pm, 680-2055, [www.watervillefarmersmarket.org](http://www.watervillefarmersmarket.org),

WAYNE

- **Farmers' Market**, 685-4657, <http://waynefarmersmarket.weebly.com>, Saturday 9 am-noon, Town Green, at the Mill Pond, Main Street

WILTON

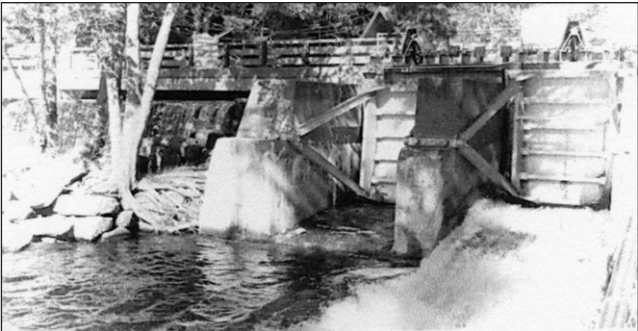
- **Wilton Farm & Home Museum**, 645-2091, 645-4578, [www.thewiltonfarmandhomemuseum.org](http://www.thewiltonfarmandhomemuseum.org), Saturday 1-4 pm or by appointment, 10 Canal Street

WINSLOW

- **Fort Halifax on the Kennebec River**, historic fort tower, park, Route 201

WINTHROP

- **Norcross Park**, playground, picnic site, boat launch on Maranacook Lake
- **Farmers’ Market**, 446-2899, Tuesday and Saturday 9 am-1 pm, town office parking lot, 17 Highland Avenue



The Dams Keeper Report

As of this writing both Great Pond, Long Pond and Salmon/McGrath as well as most of our ponds are fortunately, still holding their own - thanks to those afternoon scattered thunderstorms. Remember that the weather folks had originally forecasted another dry summer just like last year!

With daily management, Great Pond is now 1.92” above full pond with Gate 1 opened just 3” to offer a bit of current in the stream as well as to make room for those afternoon showers. Long Pond is currently at 1.08” above full with both gates now completely closed to get Long Pond back up to the desired 3” above full pond. Due to its relatively flat watershed, Salmon/McGrath is currently still right at full pond.

For the next 7 days, they are forecasting more afternoon and evening showers adding up to 1.19” of rain which should allow us to maintain status quo. Scattered showers are always preferred and result in a lot less phosphorus run off into our ponds than the gully washers!



Enjoy this beautiful summer, weather and your vacation!

Dick

Dick Greenan  
Secretary, Belgrade Lakes Watershed Dams Committee

Are You Buff Enough?

How to Become LakeSmart-er Workshop III

Hosted by North Pond Association at Fairview Grange 826 Village Road, Smithfield

Co-sponsored by the Belgrade Regional Conservation Alliance Lake Trust  
Saturday, July 8, 9am-11am  
Optional Pontoon Boat Ride – 11am-12pm



DARE TO COMPARE

Best Prices on Inside, Outside Boat Storage, Shrinkwrapping & Winterization

Craig Pooler  
Cell 207-314-3287 • Office 207-495-3421  
Email: [belgradeboatstorage1@yahoo.com](mailto:belgradeboatstorage1@yahoo.com) ;  
[www.BelgradeBoatStorage.com](http://www.BelgradeBoatStorage.com)



**J & M Logging, Inc.**  
**Firewood**  
622-6353  
Cut to order  
in lengths from 14" to 23"

Green Certified Wood, Seasoned, & Ash  
Cut, Split & Delivered  
853 Civic Center Drive, Augusta, ME 04330

Changes?  
Updates?  
New contact information?  
Please let us know...  
mo.breault@gmail.com  
or ebelnews@earthlink.net





## — Calendar —

**Thursday 7/6 through Sunday 7/9** - "Those Crazy Ladies in the House on the Corner," 474-7176, Lakewood Theater, Route 201, Madison.

**Thursday 7/6 through Saturday 7/8** - "The Learned Ladies," by Moliere, 933-9999, The Theater at Monmouth.

**Friday 7/7** - Guided Walking Tour of Historic Skowhegan, "Early Settlers," 10 am, 474-6632, History House, Skowhegan.

**Friday 7/7** - "Skosh," Summer Waterfront Concert, free - donations accepted, 582-7144, 280 Water Street, Gardiner.

**Saturday 7/8** - Yard Sale, Oakland Lions Club, 314-9746, 15 Hubbard Street, Oakland.

**Saturday 7/8** - Are You Buff Enough? How to Become LakeSmart-er Workshop 2017, sponsored by the North Pond Association, 362-5533, 9-11 am, optional pontoon boat ride 11 am- 12 pm, Fairview Grange, Main Street, Smithfield.

**Saturday 7/8** - B-Well Revolution Festival for holistic health practitioners, 10 am-4 pm, 495-2650, Center for All Seasons, Route 27, Belgrade Lakes.

**Saturday 7/8** - Community Day, Colby College Museum of Art, public invited, museum hours 10 am-5 pm, Summer Luncheon honoring David Driscoll - to purchase luncheon tickets call 859-5600, Colby College, Mayflower Hill, Waterville.

**Saturday 7/8** - Annual Firefighters Chicken BBQ, to help purchase equipment, \$8, 11 am til gone, Oakland Fire Station, Fairfield Street, Oakland.

**Saturday 7/8** - Drive Thru Chicken Barbecue, \$9, 11:30 am til gone, Unity United Methodist Church, corner of Main & Depot Street, Unity.

**Saturday 7/8** - Free Weekend Concert, New England Music Camp, historic Bowl in the Pines, Messalonskee Lake, 3 pm, 465-3025, Pond Road, Route 23, Sidney.

**Saturday 7/8** - Sandy River Ramblers Concert, to benefit Rte. 27 Arts, a non-profit organization, 7 pm, \$10, students 6-18 \$5, under 6 free, 246-2300, Stratton Community Building, Route 27, Stratton.

**Saturday 7/8** - Atlantic Music Festival Opening Concert, 7 pm, free, open to public, reservations encouraged, 316-2162, Colby College, Waterville.

**Saturday 7/8** - "Salome," 873-7000, Waterville Opera House, Main Street, Waterville.

**Saturday 7/8** - Bill Berlinghoff at the Union Coffeehouse, followed by open mic, donations \$5, 7 pm, Union Church, Main Street, Belgrade Lakes.

**Saturday 7/8** - "Three Days of Rain," by Richard Greenberg, 7:30 pm, 933-9999, Cumston Hall, The Theater at Monmouth.

**Sunday 7/9** - "My Father's Dragon," family show, 1 pm, 933-9999, Cumston Hall, The Theater at Monmouth.

**Sunday 7/9** - Paper Cut Painting with Gayle Chung, a Second Sunday free community art-related event, open to the public, all ages welcome, 587-7027, Harlow Gallery, Water Street, Hallowell.

**Sunday 7/9** - New England Music Camp Concert, rain or shine, free to the public, everyone welcome, 3 pm, 465-3025, Bowl in the Pines, Pond Road, Route 23, Sidney.

**Sunday 7/9** - Kennebec Performing Arts Council, free concert, Coburn Park, Water Street, Skowhegan.

**Tuesday 7/11 and Wednesday 7/12** - Summer Seminar for educators and life-long learners, "Yearning to Breathe Free: The Immigrant Experience in Maine," first session in a series

of three, 9 am-4 pm, 621-3532, Michael Klahr Center, University of Maine, Augusta.

**Tuesday 7/11** - Quarry Road Summer Race, 3K at 6 pm; fun run for youth 12 and under at 5:30 pm, www.quarryroadraces.com, Quarry Road Trails, Waterville.

**Tuesday 7/11** - "One Man's Meat," E.B. White, "Let's Talk About It" book group discussion, 5:30 pm, register at 287-5600, Maine State Library, Capitol Complex, State Street, Augusta.

**Tuesday 7/11** - "State of the Loons" and how you can help them to continue to thrive in our watershed, update by Susan Gallo, head of the Maine Loon Project at Maine Audubon, 512-5150, Maine Lakes Resource Center, Main Street, Belgrade Lakes.

**Wednesday 7/12** - 1775 Arnold Expedition, 474-3362, Skowhegan History House, 66 Elm Street, Skowhegan.

**Wednesday 7/12 through Saturday 7/15** - Spinoff Studios Pup-up Shop, offering a vibrant selection of original art and crafts, 12-6 pm Wed-Fri, 10 am-6 pm Sat, 622-2813, Harlow Gallery, Water Street, Hallowell.

**Wednesday 7/12** - Annual July Turkey Supper with roast turkey and all the trimmings and homemade pies, adults \$10, children 6-12 \$5, 5-7 pm, Oakland-Sidney United Methodist Church, West School Street, Oakland.

**Wednesday 7/12** - Grange Supper, \$8, 5 pm, Main Street/Route 11, Smithfield.

**Wednesday 7/12** - Author Bruce Robert Coffin, presentation on 1st novel "Among the Shadows" and upcoming novel "Beneath the Depths," a mystery series set in Portland, books available for sale, light refreshments, 6-8 pm, 495-3508, Belgrade Public Library, 124 Depot Road, Belgrade.

**Wednesday 7/12** - Open Country Jam, sing, play or listen, all acoustic, weather permit-

ting, free admission, 6:30-9 pm, United Methodist Church Hall, Starks Road, New Sharon.

**Wednesday 7/11** - Free outdoor family movie night, "Finding Nemo," bring the kids, a picnic, a blanket, some snacks, water and popcorn provided, in case of rain postponed until Wednesday, 474-3621, Coburn Park, Water Street, Skowhegan.

**Wednesday 7/12** - Atlantic Music Festival, chamber concert, free and open to the public, 7 pm, 316-2162, Lorimer Chapel, Colby College, Waterville.

**Wednesday 7/12 through Saturday 7/15** - "Those Crazy Ladies in the House on the Corner," 474-7176, Lakewood Theater, Route 201, Madison.

**Wednesday 7/12** - Public supper, turkey pie, beverage, homemade dessert, 5 pm, adults \$8, children \$4, Fairview Grange, Route 8, downtown Smithfield.

**Wednesday 7/12** - Waterfront Wednesday Concert Series, wonderful family event, free for the public, 6 pm, Waterfront Park, Augusta.

**Thursday 7/13** - McGrath Pond/Salmon Lake Association 2017 Annual Meeting, 6 pm, North Belgrade Community Center, Route 8, North Belgrade.

**Thursday 7/13** - Atlantic Music Festival concert, free and open to the public, 7 pm, 316-2162, Lorimer Chapel, Colby College, Waterville.

**Thursday 7/13 through Saturday 7/15** - "Macbeth," Thursday preview show, Friday opening, 7:30 pm, 933-9999, Cumston Hall, The Theater at Monmouth.

**Thursday 7/13 through Saturday 7/15** - ASAM Summer Spectacular Horse Show, free, open to public, great family outing, visit barns, covered arena, concessions, 474-2947, Fairgrounds, Route 201, Skowhegan.

## MAINE-ly ELDER CARE

"Caring for the ones who cared for us"



In - Home Nursing • Personal Care Services • Homemakers  
• Emergency Response Systems • Transportation Services

STATE REGISTERED PERSONAL CARE  
AND HOME MAKER AGENCY

**465-3249**

28 Center St., Oakland, Me 04963

[www.Maine-lyElderCare.com](http://www.Maine-lyElderCare.com)

[denise@Maine-lyElderCare.com](mailto:denise@Maine-lyElderCare.com)

Expanded in 2014 to Better Serve Our Customers



**Belgrade Lakes  
Marine & Storage, Inc.**

### Winter Storage for Summer Vehicles

Secure newer storage facilities accommodate boats on trailers, autos, and the largest RVs in 3 buildings totaling over 21,000 sq. ft. Electrical charging outlets are available. Reasonable rates for real protection from extreme winter storms and sun damage.

**207-495-2378 • [www.belgradelakesmarine.com](http://www.belgradelakesmarine.com)**

366 Augusta Road, Route 27, Belgrade, ME





...Continued from page 19

ers who hold contrary views from their own.

Facing History and Ourselves is a worldwide organization that enables transformative dialogue, fosters empathy and reflection, and has been shown to improve students' academic performance. Through rigorous investigation of the events that led to the Holocaust and other recent examples of genocide and mass violence, students in the Facing History class learn to choose knowledge over misinformation, compassion over prejudice or bullying, and participation over indifference or resignation.

The final seminars will focus on civil discourse. The Democracy is Noisy program will be held on August 2nd and 3rd for educators and life-long learners, and on August 8th and 9th for students in grades 8 through 12. This project has been developed in partnership with the Gannet House First Amendment Museum in Augusta.

Both programs will feature a variety of speakers, including representatives from the Marlin Fitzwater Center for Communication, the Margaret Chase Smith Library and Museum, the Maine Legislature, the Maine Department of Education, and several other organizations. In addition, these workshops will examine some of the many tools that are freely available on-line from Teaching Tolerance, The National Institute for Civil Discourse, and others.

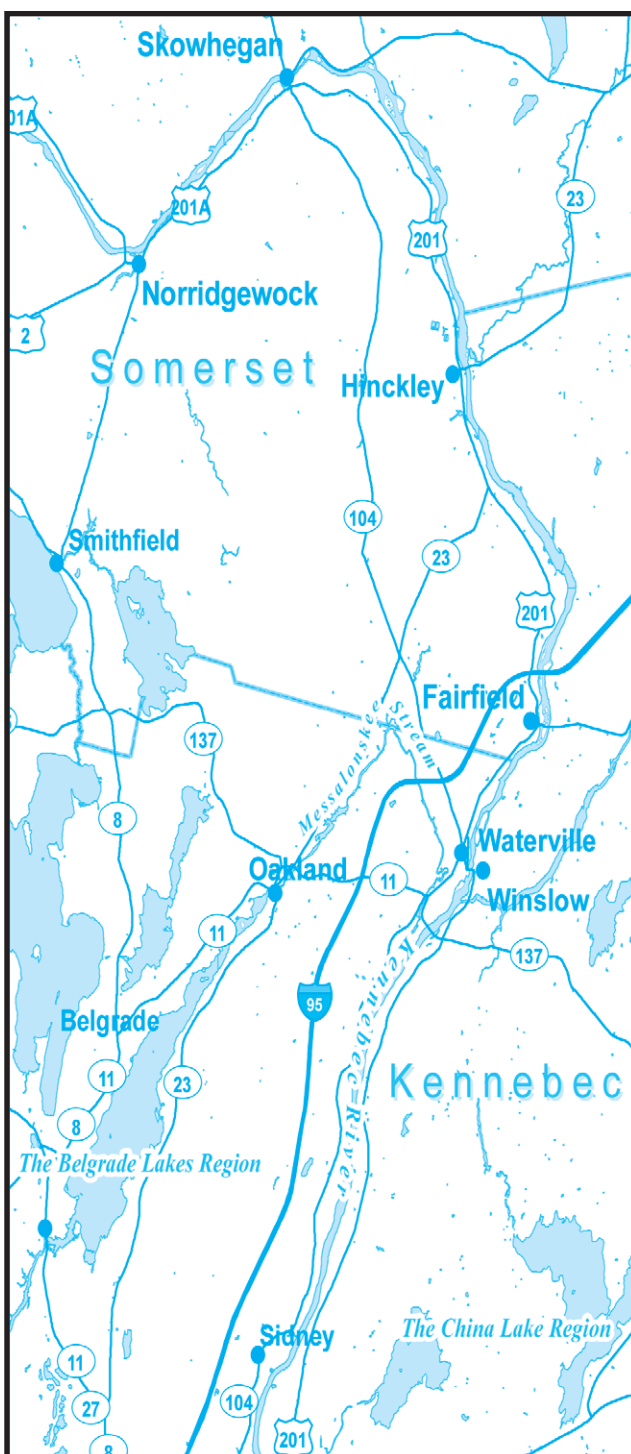
Registration forms are available online at [hhrc-maine.org/summer-seminar](http://hhrc-maine.org/summer-seminar) and are due with payment two weeks prior to the seminar start date. Tuition is \$100 for all three seminars. Those participating in "Holocaust and Human Behavior" have the option of purchasing the text of the same name for an additional \$40. Tuition includes light snacks and lunch.

Each seminar runs daily from 9 AM – 4 PM and provides 12 contact hours for educators. There are also a limited number of stipends available for those traveling 80 miles or further from Augusta.

The summer seminars are supported by the Oak Grove School Foundation and the UMA Diversity Committee.

The Michael Klahr Center, home of the HHRC, is located at 46 University Drive in Augusta and is

## Kennebec Corridor



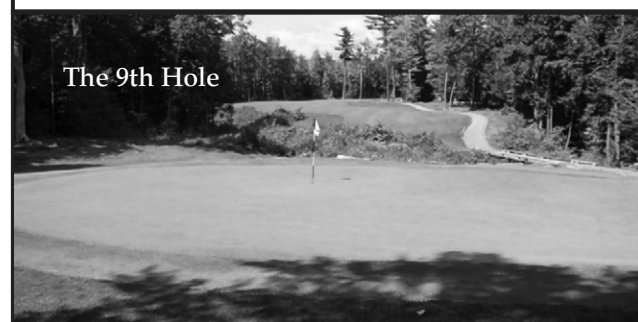
open 10 a.m. – 4 p.m. on Mondays – Fridays or by appointment. For more information about the seminars or about the Klahr Center, contact HHRC Executive Director Elizabeth Helitzer at (207) 621-3532 or [elizabeth.helitzer@maine.edu](mailto:elizabeth.helitzer@maine.edu)

**THIRTY-SIX  
GREAT REASONS**  
MAINE'S ONLY 36-HOLE  
PUBLIC GOLF COURSE  
THE LARGEST GOLF FACILITY  
NORTH OF BOSTON

Championship Golf, Full Pro Shop,  
Driving Range, & Modern Clubhouse.  
Groups Welcome

**Natanis**  
GOLF COURSE

Webber Pond Road,  
Vassalboro, ME • 207-622-3561



**LakeHouse™**  
Renovations

Design • Build • Renovate

Traditional Style Camps,  
Cottages and Lakefront Homes  
**207.242.3663**  
[www.lakehousedesignbuild.com](http://www.lakehousedesignbuild.com)

**ACME LAND SURVEYING, LLC**  
Professional Land Surveyors – Professional Foresters  
Property Surveys, Subdivisions, Topographic Surveys, MLIs,  
Elevation Certificates/LOMAs, ALTA/ACS Surveys,  
Deed Research, Wetland Delineation, Forest Management

108 Fairbanks Rd., Suite 5  
Farmington, ME 04938  
Website: [www.acmelandsurveying.com](http://www.acmelandsurveying.com)

Tel. (207) 778-4081  
Toll Free (800) 778-4081  
Email: [info@acmelandsurveying.com](mailto:info@acmelandsurveying.com)

**DAY'S REAL ESTATE**  
"The Waterfront Specialists"

262 Augusta Road, PO Box 284  
Belgrade Lakes, Maine 04918  
**207-495-3111**  
[www.daysrealestate.com](http://www.daysrealestate.com)  
[daysrealestate@roadrunner.com](mailto:daysrealestate@roadrunner.com)

**Jeannie G., LMT**  
Licensed Massage Therapist  
120 Drummond Avenue, Suite 1  
Waterville, Maine 04901  
Phone: **207-509-1251**  
[jeannieglmt@gmail.com](mailto:jeannieglmt@gmail.com)  
Veteran and Clergy Preference Discount

An essential component of Self-care and recovery, stress reduction and improved circulation, consider Massage Therapy as preventative maintenance for improved quality of life. Call for flexible scheduling, Monday through Saturday.  
**Member AMTA**

## "50/50" Statewide Fishing Derby



From June 20th to July 20th, bait your hook, cast your line and you might reel in not only fish, but Cash & Prizes too. In this Statewide Fishing Derby, earn your chance to win cash prizes from 50% of the ticket proceeds and sponsorships. This is a fundraising derby to benefit the programs of Friends of Messalonskee that directly fight the battle against the invasive aquatic plant Variable Leaf Milfoil.

There are thirteen species of fish that qualify. Enter as many fish in as many categories that you wish-no limit of entries! There is no weigh station- just take a picture of the fish against a measuring tape, include the FOM ticket in the photo, and email it to [friendsofmessalonskee@gmail.com](mailto:friendsofmessalonskee@gmail.com). A weekly updated leaderboard will be available on our Facebook as well as our website. All first through

third place winners in each category will be placed in a raffle style drawing, respectively, and winners will be drawn for the cash prizes. Out of the 50% purse, 60% of will be first place, 30% second place, and 10% third place. Winners also have chances to win other great prizes as well!

Winners will be drawn on July 22nd at Oakfest in Oakland, Maine, where derby door prizes will be drawn and a separate 50/50 raffle will take place. Order tickets through our website at [www.friendsofmessalonskee.com](http://www.friendsofmessalonskee.com) or call (207) 465-8333. Derby Rules, How-to video, and other information can be found on our website! You can also go to our Facebook Derby Page: All Belgrade Lakes Fishing Derby (This particular Derby is Statewide) Have Fun!!





**Design - Install - Maintain**

**Lake Smart Certified for all your Waterfront Needs**

Plant Intallation, Patios, Walks, Permeable Pavers Driveways, Plant Maintenance, Mowing, Fertilizing, Spring & Fall Clean Up



Serving all of Central Maine

**474-2420**

[www.lynchlandscaping.com](http://www.lynchlandscaping.com)



**Showing the Best of World and American Cinema**

17 Railroad Square, Waterville, Maine, 04901

24-hour movie info:

**207-873-6526**

[www.railroadsquarecinema.com](http://www.railroadsquarecinema.com)



**Home of the  
Maine International  
Film Festival  
(July 14 - 23, 2017)  
[www.MIFF.org](http://www.MIFF.org)**



**free and open to the public**



**Colby College Museum of Art**  
Waterville, Maine  
[colby.edu/museum](http://colby.edu/museum)  
207.859.5600



**ST. MICHAEL SCHOOL**

56 Sewall Street, Augusta, ME 04330  
207.623.3491 [www.smsmaine.org](http://www.smsmaine.org)

**NEW Fall 2016...  
PRE-K for 3 year-olds!**

St. Michael School will be opening a new Pre-School Program for 3 year-old children starting in the fall. This Program will have a curriculum, daily schedule and an overall program that is consistent with the mission and values that have been associated with a St. Michael School education. Register your child TODAY!



**A Legacy of Excellence,  
a Foundation for the Future.**



## Belgrade Vacation Rentals

### CAMP & COTTAGE RENTALS

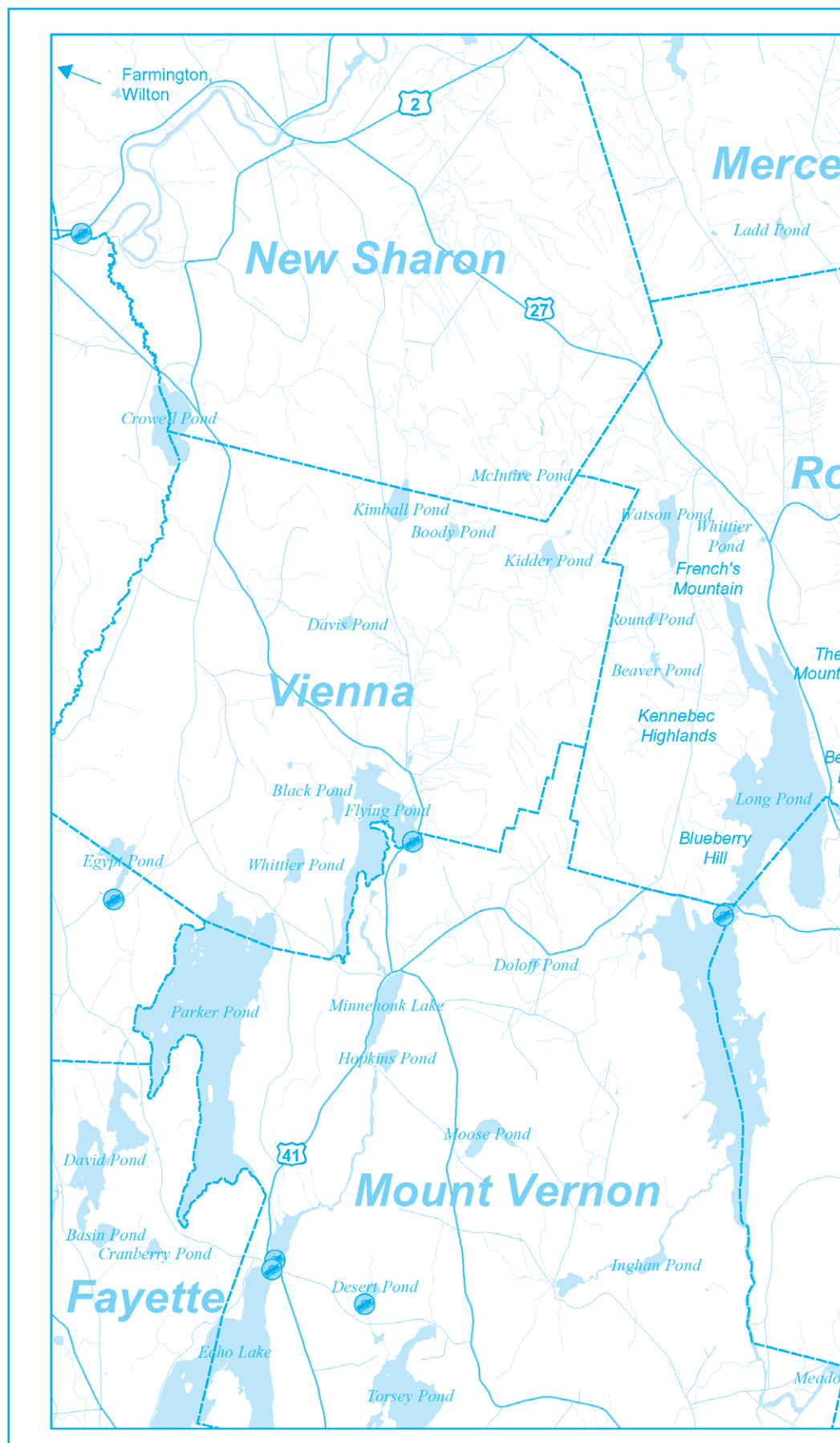
Located next to Pete's Pig Barbecue!

**Contact Us Today!**

**(207) 495-4011**

[www.BelgradeVacationRentals.com](http://www.BelgradeVacationRentals.com)

**Own A Property? We Will Rent it for You!**



"Your Sight is Our Vision"

- Comprehensive Eye Exams
- Eyewear Center / Contact Lenses
- State of the Art Cataract Surgery
- Retinal Diseases and Glaucoma
- LASIK Refractive Surgery
- Laser Surgery
- Oculoplastic Diseases
- Botox, Juvederm and Latisse

• Ambulatory Surgery Center

[www.Maine2020.com](http://www.Maine2020.com)



Steve R. Witkin, M.D.



Peter C. Kohler, M.D.



James R. Putnam, M.D.



Marc B. Daniels, M.D.



Helen Bell-Necevski, O.D.



Lorie Lepley Parks, O.D.



Michael C. Parks, O.D.



Ian M. Jones, O.D.

325A Kennedy Memorial Drive  
Waterville, Maine 04901

**873-2731**  
**(800) 660-3403**

## RIVERSIDE FARM

### RESTAURANT & WINE MARKET

**Restaurant Hours:**

**Brunch**

**Saturdays & Sundays - 10am-2pm**

**Lunch**

**Tuesdays - Fridays - 11am-2pm**

**Dinner**

**Thursdays - Saturdays - 5:30pm-8:30pm**

**Wine Market Hours:**

**Tuesdays - Fridays - 10am-5pm**

**Saturday - 10am-2pm**

**291 Fairfield Street  
Oakland, ME 04963**

**For reservations call 207-465-4439**

[RiversideFarmMarket.com](http://RiversideFarmMarket.com)





## RIVERFRONT BARBEQUE & GRILLE

### WORLD CLASS BARBEQUE

SEAFOOD, PASTA, & VEGETARIAN ENTREES

207.622.8899

300 WATER STREET, AUGUSTA, MAINE

WWW.RIVERFRONTBBQ.COM

FULL SERVICE DINING \* CATERING \* BULK TAKE OUT



## The Gin Mill

Augusta, Maine

Augusta's finest upscale lounge featuring fine wine, martinis, and over 100 brands of beer from Germany to Japan

Thursday thru Saturday 3:00pm until Midnight, Above the Riverfront Barbeque & Grille

at 300 Water Street

207.620.9200

## Lakepoint REAL ESTATE

"Put The Team to Work For You"

207.495.3700

GAIL RIZZO 207-242-8119  
gail@gailrizzo.com



PAT DONAHUE 207-730-2331  
pdcamp@msn.com



**FLYING POND, VIENNA:**  
133' Lakefront, cust kitchen, living room, dining area, expansive views. #1310054  
\$296,900



**BELGRADE:** 3BR/2.5BA, country kitchen w/bar area, playroom, deck off Master BR w/hot tub. 2nd deck. All on 2.5 Acres #1306681  
\$236,200

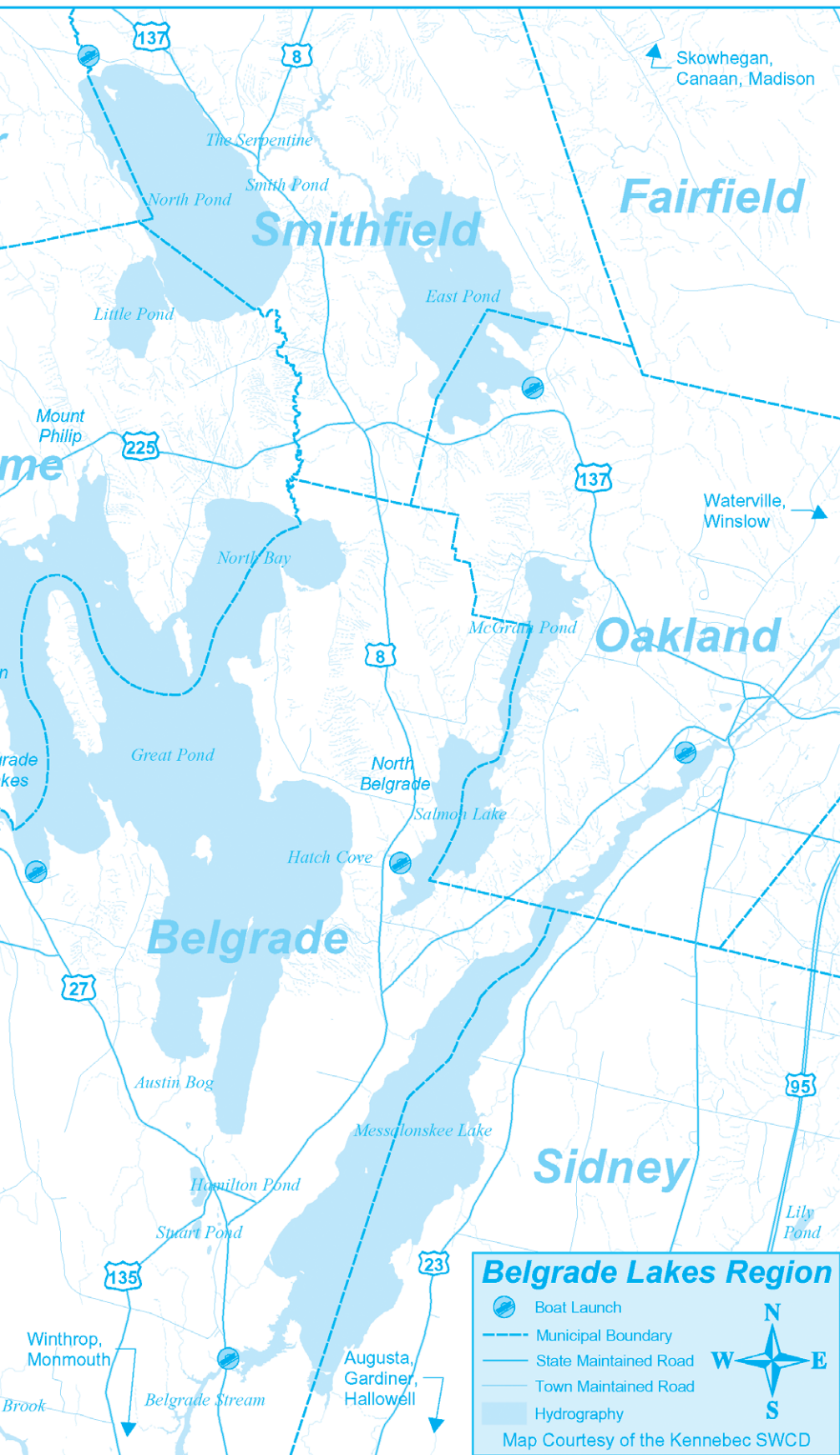


**GREAT POND, BELGRADE:**  
2000' lakefront. Classic 1912 Cottage on Baxter Point. Winter home at water's edge. #1313155  
\$1,490,000



**GREAT POND, ROME:** 2 Classic Cottages, 2 boat-houses, 12+ acres, 299' +/- lakefront. Amazing views located in the Jamaica Point Area. #1293715 \$799,000

221 Main Street, Belgrade Lakes, Maine 04918



## Visit the Businesses on Marina Drive

### Family Fun Days BOAT RENTALS



O'Brien Water-Sports Pro Shop

**Don't Be Left  
Standing On  
The Dock**

**Reservations:  
Online Only**

www.greatpondmarina.com **Open Every Day 9-4**

**Old Town**  
CANOES \* KAYAKS

### Lakeside Cottage Rentals



**Exclusive  
Lakeside  
Rentals in the  
Belgrade  
Lakes Region**

Located at 25 Marina Dr.  
(207) 495-4046  
www.LCRentals.com

### Waterfront Property Owners

We offer full service rental management services. Please call if you are interested in having us manage your home.



sadiesboathouse@hotmail.com

• 207-495-4045 •

Like us on Facebook!  
Open Friday & Saturday  
from 5 PM - 9 PM

### ShoreStation®

The original since 1959

### Brown Dock Services

George: 495.2600 Jason: 316.7514

Display Docks & Lifts at Great Pond Marina

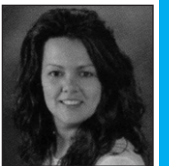
www.browndockservices.com

## Lakepoint REAL ESTATE

221 Main Street  
Belgrade Lakes, Maine 04918  
Cell: (207) 592-5577  
Office: (207) 495-3700  
www.belgradelakepoint.com  
stephanie@belgradelakepoint.com



**Long Pond**-Beautiful year round home w/200' private frontage. True western exposure w/spectacular sunsets. Single flr living, 3BR/3BA, open concept kitchen/living/dining, cathedral ceilings w/great light, hardwood flrs & fireplace. Mature landscaping, paved drive, 2 car garage & meticulously maintained. Located conveniently 1 mile drive or short boat ride from the village & all its amenities! \$549,900



**Stephanie  
Yeaton**  
Broker



## Clark Marine

Manchester - Monmouth - Belgrade

57 PUDDLEDOK ROAD, MANCHESTER, MAINE  
207-622-7011 | CLARKMARINEMAINE.COM

**GLASTON**



**Bryant**



**Avalon**



**CRESTLINER**



The one stop shop for your fresh water boating needs!

## G & L CONTRACTING

- New Construction
- Additions
- Dock Installations
- Jacking

207-495-9009

www.gandlcontractingmaine.com



### Lift Services

Serving: Great and Long Pond,  
Messalonskee, and Cobbossee





## — Upcoming —

### JULY

• The Mt. Philip Grange monthly Bean Supper will be on Saturday, July 15, Routes 225 and 27 In Rome, starting at 4:30 pm; adults \$7, under 5 free, family of 4 or more \$20.

• On Monday, July 17 at 10 am the 22nd Annual Kennebec Valley Chamber of Commerce Golf Tournament to benefit the Kennebec Leadership Institute will be held at the Augusta Country Club. [Kennebecvalleychamber.com](http://Kennebecvalleychamber.com)

• On Wednesday, July 26, 6-8 pm, at the Belgrade Public Library, 124 Depot Road, Lee Ann and Thomas Mark Szelog will present a journey on the wild side through Maine's woods and coast. Free and open to the public. 495-3508

• A Potluck in the Park, i.e. Gardiner Commons will be held on Wednesday, July 26th at 6:30 pm to welcome new residents and strengthen neighborhoods. [Danstevens43@hotmail.com](mailto:Danstevens43@hotmail.com)

• A Classical Suite on Mill Stream: A New England Music Camp Recital will be held on Thursday, July 27 at 3 pm at the Maine Lakes Resource Center in Belgrade Lakes. 620-6029

• On July 21-23 OakFest will be celebrated in Oakland with a parade, street dance, special sales and food, Open Air Market, music and more. [www.oakfestmaine.com](http://www.oakfestmaine.com)

....Continued from page 5

Nathan is an avid fisherman and we spent most of a day fishing, catching a few bass and a bunch of yellow perch that made a nice breakfast the next day. Nathan honed his skills in operating the electric trolling motor and improving his flycasting with a conventional flyrod. He has been using a Tenkara rod for a few years, which is much easier to use but doesn't really do the distance and depth necessary for fishing a big, deep lake like Long Pond. We also got to see a lot of birds and other wildlife and spend some time checking out the bog bridge under construction at BRCA's Fogg Island preserve. A highlight this week was the appearance of at least three loon chicks on Long Pond. The new generation is beginning to appear at all the lakes in the area and it is a special time to watch the parents nourish their young and teach them to survive on their own. Bring a pair of binoculars so you don't have to get too close. I will be talking more about loons in a couple of weeks after the annual loon count on July 15th.

There were frequent showers this week but I squeezed a couple of hikes in between the weather. I began searching for chanterelle and black trumpet mushrooms, which I anticipate will be appearing shortly but so far, no luck.

This area offers some great outdoor recreation, whether you like to hike, bike, bird-watch, fish, sail, or paddle a canoe or kayak. Pick up a map of the local trails at Day's Store or from the BRCA at the Maine Lakes Resource

• Farmington Summer Fest will be Friday, July 21, 2-9 pm and Saturday, July 22, 10 am-9 pm.

• On Friday, July 28, a free outdoor concert will be held in Waterville's Castonguay Square from 6-8 pm.

• The Annual 5K Road Race to benefit the Belgrade Public Library will be held on Saturday, July 29, at 8 am at the Belgrade Central School. 495-3508

• "Beauty Lou and the Country Beast" will be performed on Saturday, July 29 at 2 pm at the Waterville Opera House, by the Missoula Children's Theater camp.

• Belgrade Fire and Rescue will hold its Annual Auto Show on Sunday, July 30 next to Belgrade Central School; gates open at 8 am, awards at 2 pm, rain or shine. 215-6142

### AUGUST

• "You're a Good Man Charlie Brown" will be presented on Thursday and Friday, August 3 and 4 at 7:30 pm at Alumni Hall, New England Music Camp. Tickets: \$20, students \$15. 465-3025

• Dave Mallett will be performing at Goodwill-Hinckley on Saturday, August 5 at 7 pm. 238-4280

• The Belgrade Fire and Rescue Bean Hole Bean supper at the Belgrade Community Center for All Seasons, 5-7 pm, followed by the Annual Loon Calling Contest in Belgrade Lakes will be on Saturday, August 5; sign up for the Loon Calling outside Lakepoint Real Estate at 6:30 pm. 495-3312

• The Taste of Greater Waterville, sponsored by the Mid-Maine Chamber of Commerce, will be held on Wednesday, August 2, 9 am-11 pm. 660-4939

• The drawing for the Raffle for the Lakes will be held on Sunday, August 6. First Prize is an \$30,095 Edendriver boat with motor and trailer. The raffle table is by the Post Office in Belgrade Lakes. 512-5150

• The Town of Belgrade will have a paint recycling event on August 9, 10 and 12 for residents and summer citizens. Only architectural products accepted; must be in original containers with original label and secure lid. 592-0678

• Simons & Goodwin will perform at the Union Coffeehouse in Belgrade Lakes on Saturday, August 12 at 7 pm. An hour of open mic will follow.

• The Winthrop Sidewalk Art Show, food, sales, farmers' market and festivities will be held on Saturday, August 19 in downtown Winthrop.

• On August 23-27, the 45th Blistered Fingers Family Bluegrass Music Festival with 12 major bands, an extra large tent area for spectators, a Kids Academy, concessions, camping and more is scheduled at the Litchfield Fairgrounds. Children 16 and under free with adult. 873-6539

• Color Me United 5K run/walk will be held on Saturday August 26, 9 am-12 noon, at the Narrow Gauge Cinema/Prescott Field parking lot in Farmington.



Tools of the trade: WQ Meter, Secchi disk, Aquascope, and nice brown trout caught by fishing at the right depth in the temperature-oxygen profile.



Loon chicks with mother.

Center (MLRC). And make sure you take a kid along on your next outdoor adventure and help create some memories. Also, please check the MLRC web site for details on some interesting events scheduled this summer (<https://mainelakesresourcecenter.org/upcoming-events/>). They will have presentations on loons (July 11), native plants (July 18th), New England Music Camp recitals (July 27). August begins with one of my favorite authors, renowned naturalist Bernd Heinrich, who will be speaking on the first of the month and signing books. There will be many other interesting events through the summer. Check the web site and keep an eye on the sign out front.



## UNION COFFEEHOUSE



**Featuring Singer/Songwriter**

**Bill Berlinghoff**

**Plus Open Mic Hour**

**Saturday, July 8<sup>th</sup> - 7:00 PM**

**Union Church - Route 27 in Downtown Belgrade Lakes**  
**Refreshments \$5.00 Donation at the Door**





## —Conservation Too—

## Invasive Bugs – Be a Citizen Scientist

By Dale Finseth

I'm letting my conservation characters take a break this week. It is that time of the season when we want to help people out hiking or even in their back yards to identify invasive forest pests.

Maine's Soil & Water Conservation Districts are working with the Maine Forest Service to help people identify invasive forest pests i.e. bugs that could do serious damage to our woodlands. While some of those bugs have not yet appeared in Maine, we need to be vigilant and identify them should they appear.

Some are already here. Hemlock Woolly Adelgid is not that uncommon. We have been working to identify its location, possible spread and efforts to control damage. Evidence of its existence is the "wooly" collections on the underside of hemlock branches along the stems where needles occur.

The Browntail Moth is already here. It is slowly spreading. Efforts to not only identify its spread, but manage and minimize damage are in process. This moth's caterpillar has two distinct red/orange dots on its back. Its "tents" are also distinctive. They appear at the end of branches rather than closer to the trunk in crotches of the branches.

The Browntail Moth caterpillar has tiny (0.15 mm) poisonous hairs (setae) that cause der-



matitis (skin rash) similar to poison ivy on sensitive individuals. Direct contact with the caterpillar or indirect contact with airborne hairs may cause the reaction. Most people affected by the hairs develop a localized rash lasting a few hours or several days but on some sensitive individuals the rash can be severe and last for weeks.

Some of these bugs have not yet been reported in Maine. The Emerald Ash Borer can devastate woodlots of Ash trees. Once established,

clear cutting and destroying the wood is often the best option. The small shiny green insects bore into the Ash trees and destroy the tree from the inside. Sick Ash trees should become suspect. The insects are tiny [see photo of examples placed on a penny] and the actual holes in the tree's bark are also very small. The damage to the Ash tree is the best way to begin identification.

What can a person do? Try and learn how to identify some of these nasty Forest Pests. The Maine Forest Service of the Maine Dept. of Agriculture, Conservation and Forestry has an excellent website for all invasives including these Forest Pests. [www.informe.org/portal/about\\_me/invasives.html](http://www.informe.org/portal/about_me/invasives.html) If you think you have identified one of these critters, do not be afraid to call the Maine Forest Service. 207-287-3891. They would rather help you learn it is NOT an invasive than have you fail to report the real deal. Take a picture or collect the bug in a bag or bottle and keep it in the freezer. Help out in this effort to protect Maine from these invasives.

Remember, protecting the woods is one way to protect water quality. Do your part!



For information about any of our conservation projects please contact Dale Finseth at 622-7847, x 3 or check our website at [www.kcswwcd.org](http://www.kcswwcd.org)

...continued from page 3

Practices. (BMPs). Then NPA, with funds from donors, wanted to help encourage property owners to improve their properties and is offering \$150 seed money to help defray the cost of materials and plants to the first 20 property owners to contact them. Our efforts will help preserve the "healthy" areas and improve upon problem hot spots around the lake, while beautifying them at the same time!

This rain or shine event is FREE to all participants and includes: complimentary light breakfast, an information packet jam-packed with ideas about best management practices, FREE site visit from the YCC or LakeSmart representative, pontoon boat ride, discount coupon to participating nurseries and landscape businesses, guided tour of BMPs grounds at the grange hall, which is LakeSmart

certified, how to create a rain garden, spread erosion control mulch (ECM), optional pontoon boat ride to view buff enough and LakeSmart properties, and a FREE buffer plant to take home to get you on your way to being Buff Enough!

ADDED BONUS...Attendees will get a unique first-hand look at the work in progress on the shore of Sunbeam Roller Rink, one of the first to request funding for the work being done, on Saturday, July 8th with YCC director, Nathan Durant, explaining why the work is needed, how it works and what it entails.

Copies of the survey report are on sale for \$15 at Rome, Smithfield and Mercer town offices and MLRC in Belgrade Lakes Village! Another option...find it on the web: <https://tinyurl.com/yb5gnlzy>

To RSVP or FMI contact Linda Rice, cell/text (207) 313-2494, telephone 362-4631 or email [lindarice74@yahoo.com](mailto:lindarice74@yahoo.com)

We suggest you RSVP but just dropping in is fine, too!

And remember on any rainy day you can watch where your run off travels, take a look around the yard and ask yourself, "Am I Buff Enough?"

*Are You Buff Enough? Workshop is hosted by the North Pond Association and co-sponsored by the Belgrade Regional Conservation Alliance Lake Trust members comprised of the BRCA and all 5 lake associations: Belgrade Lakes Association, East Pond Association, Friends of Messalonskee, McGrath Pond-Salmon Lake Association and North Pond Association.*



### ESTATE SALE

Saturday July 8th from 9am-1pm

Furniture, boats, canoes w/wooden oars, paddle boat, furniture, tools, accessories etc

112 Northshore Dr., Smithfield, Maine



**SALES • SERVICE • INSTALLATION**  
[www.generatorsofmaine.com](http://www.generatorsofmaine.com) 207-495-2285

**KOHLER**  
 IN POWER. SINCE 1920.

Platinum Dealer

Specializing In

### CAMP JACKING AND LEVELING

John Webster  
 32 Webster Way  
 Belgrade, ME 04917

Sill Replacement  
 Retaining Walls

(207) 495-2965  
 35+ Years Experience





## F. A. Rizzo Appraisal Company Frank Rizzo

Consultant/Appraiser

### Estate Appraisal & Planning

Certified Residential cr709

tel. (207) 495-3365

cell (207) 458-4916

farizzo@roadrunner.com



Since 1992

## ALDEN CAMPS

Est. 1911



- Lobster Bakes on Friday nights by Reservation
- Lakeside Cottages • Boats & Motors
- Full American Plan
- Dining on the Porch by reservation Saturday through Wednesday

3 Alden Camps Cove  
Oakland, Me 04963  
(207-465-7703)

E-mail: info@aldencamps.com • Website: www.aldencamps.com



## BOOKS, PUZZLES, TOYS, GAMES

A store for children of all ages,  
the young and the young at heart.

Open Monday 12 to 5 • Tues. - Sat. 9 to 5  
52 Main St. Waterville 872-4543

## Maple Leaf Self Storage

Belgrade Me - 3.3 mi off Rte 27 on Route 135

495-2191

Various size units  
Owners live on site



Boat / Auto Storage  
By foot or unit

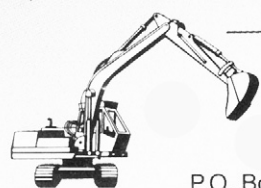
David J. Auclair  
www.auclaircycle.com

## AUCLAIR CYCLE & SKI

64-66 BANGOR ST. AUGUSTA, ME 04330  
623-4351 / 800-734-7171 • Fast Professional Service  
Bicycles • Skateboards • Roof Racks • Rentals

## DAVID STEVENS

Excavation &amp; Septic Systems



LOAM GRAVEL SAND

465-3815

Cell: 314-0314

P.O. Box 146 • Belgrade, Maine 04917

## CASTLE ISLAND CAMPS

Bait, Tackle, Gas,  
Boat, Kayak, and  
Paddleboard  
Rentals



Boats, Daily or  
Weekly

495-3312

Rentals for  
Long Pond Only

## ANTIQUE OUTBOARDS of BELGRADE

MUSEUM / DISPLAY

Wednesdays - 1-6 p.m. Saturdays - 9-12 a.m.

51 Dry Point Drive, Rome  
(in past Wings Hill 1/8th mi.)

495-3302

Luckiest Boy Books too!

## HOANG REALTY

### Pam Armour

Realtor

31 Western Ave.  
Augusta, Me 04330  
207.314.7445 cell  
207.623.0623 office  
pbrunye@yahoo.com



## — Accommodations —

**Alden Camps**, lakeside cottages on East Pond, established 1911, American Plan meals, boat and motor rentals, dining and lobster bake open to public by reservation, 3 Alden Camps Cove, Oakland, 465-7703, [www.aldencamps.com](http://www.aldencamps.com)

**Bear Spring Camps**, waterfront cottages on Great Pond, home-style meals, sandy beach, boats, motors, docks, 60 Jamaica Point Road, Rome, 397-2341, [www.bearspringcamps.com](http://www.bearspringcamps.com)

**Castle Island Camps**, cottages on the water, Long Pond, American Plan meals, boat and kayak rentals, Castle Island

Road, Belgrade Lakes, 495-3312, [www.castleislandcamps.com](http://www.castleislandcamps.com)

**The Village Inn**, rooms near the water, in the heart of the Village, 157 Main Street, Belgrade Lakes, 495-3553, [www.villageinnandtavern.com](http://www.villageinnandtavern.com)

**Belgrade Vacation Rentals**, lakeside camp and cottage rentals throughout the area, long and short stays, many size accommodations and rates, 81 Main Street, downtown Belgrade Lakes, 495-4011, [www.belgradevacationrentals.com](http://www.belgradevacationrentals.com)

**Lakeside Cottage Rentals**, featuring over 70 private homes, 24/7 customer friendly service, 25 Marina Drive, Belgrade Lakes, 592-5577, 495-4046, [www.lcrentals.com](http://www.lcrentals.com)



## — Notebook —

### Product Safety Alliance

• A PSA Grower Training Course presented by the Maine Department of Agriculture, Conservation and Forestry, will be held on Friday, July 21, 9am-6 pm, at the Maine Forest Products Council Building, 535 Civic Center Drive, Augusta for produce growers interested in learning about produce safety, the Food Safety Modernization Act Produce Safety Rule, Good Agricultural Practices, and co-management of natural resources and food safety. The course will satisfy the rule requirement that at least one supervisor or responsible party for a farm must have successfully completed food safety training. Registration required by July 14; \$25 includes lunch/snacks. 622-7847 x3

### Write On Golden Pond

• Academy Award-winning writer Ernest Thompson offers his exclusive Write On Golden Pond workshop at his home in the Lakes Region of New Hampshire. Open to 8 writers only of any age, experience, background or interest - film, theater or prose. Each writer creates a new short play, 5 pages, in an inspiring, safe and distraction-free environment with constant hands-on guidance. 603 744-3652

### Summer Nature Day Camp

• Friends of the Cobbossee Watershed are offering a Summer Nature Day Camp for 4th, 5th and 6th graders during sessions July 17-21 and July 31-August 4 at the YMCA Camp of Maine on Cobbossee Lake. \$230 per 5-day session includes lunch, all instruction and equipment and a special session of Tadpole Patrol aboard the Friends' 22' pontoon boat, the OTTER II. 621-4100

### Greene

• Father and son duo Ralph and Averill Lovely will be performing at the Sawyer Memorial on Friday, July 14 at 2 and 7 pm. Admission is free, the building is air conditioned. For more information call 946-5311. The Araxine Wilkins Sawyer Memorial is located at 371 Sawyer Road, Greene.

### Hallowell

• The Harlow Gallery invites artists working in the comic book industry and artists inspired by comic book art and themes to submit work to be considered for POW!, a juried art show on view September 8 through October 21. The deadline is August 1 by 11 pm. 622-3813

### Hinckley

• Make summer special this year for children; give them the gift of educational fun. For information about the L.C. Bates Museum's summer camps in July and August and other activities contact 238-4250.

### Monmouth

• Theater at Monmouth audience members can attend the pre-show discussion for "Macbeth" on Friday, July 14, 5:30-6:30 pm for in-depth information on the play before attending the production. The discussion will be lead by scholars or artists connected with the play. 933-9999

### Mount Vernon

• The Mt. Vernon Vienna Garden Club presents A Home and Garden Tour on Saturday, July 22, 10 am-4 pm. The \$15 tour ticket includes a brief description of each site and a map and may be purchased from Longfellow's Greenhouse, the Calico Patch, members of the club and, at the start of the tour, the Mt. Vernon Community Center. Proceeds will benefit three local groups. Luncheon is available for \$12, reservation required, and will be served at the Mr. Vernon Community Center from 11 am-1 pm. 293-3150 or 293-2670

### Oakland

• The Oakland Area Historical Society will hold Ice Cream Socials on Tuesday, July 18 and Tuesday August 15 at 6:30 pm in the parking lot in front of the MacCartney House Museum. Rain dates will be July 25 and August 22. Listen to the R.B. Hall Band, visit the Museum, enjoy ice cream. Bring your own chairs. The MacCartney House Museum on Main Street is open during July and August on Wednesdays 1:30-4:30 pm. 465-7549





## Dining

### Augusta

- **Riverfront Barbeque & Grille and Gin Mill Lounge**, world class barbeque, seafood, pasta and vegetarian entrees, full service dining, catering, bulk take out, 300 Water Street, Augusta, [www.riverfrontbbq.com](http://www.riverfrontbbq.com), 622-8899

### Belgrade

- **Pete's Pig**, 81 Main Street, sandwiches and platters for picnic-style eating on the premises or to go, , also offering a full range of catering, Main Street, Belgrade Lakes Village, [www.petespig.com](http://www.petespig.com), 495-4095
- **Sadie's Boathouse Restaurant** at Great Pond Marine, hearty contemporary American fare, 25 Marina Drive, Belgrade Lakes, 495-4045, 242-1273
- **Spiro & Company**, gourmet Greek food, Main Street, Belgrade Lakes Village, [www.spiroandcompany.com](http://www.spiroandcompany.com), 441-2103
- **The Village Inn and Tavern**, 157 Main Street, Route 27, Belgrade Lakes Village, 495-3553, [www.villageandtavern.com](http://www.villageandtavern.com)

- **Winterberry Farm Café**, homemade treats, pie, cookies, granola bars, grilled organic cheese sandwiches, veggies, drinks, Route 27, Belgrade, 649-3331

### Oakland

- **Alden Camps**, lunch or dinner by reservation Saturday-Wednesday space permitting, lobster bakes on Friday night by reservation, 3 Alden Camps Cove, Oakland, [www.alden-camps.com](http://www.alden-camps.com), 465-7703
- **Riverside Farm Restaurant & Wine Market**, simple, whole-some food and drink since 1990, 291 Fairfield Street, Oakland, [www.riversidefarmmarket.com](http://www.riversidefarmmarket.com), 465-4439

### Oakland - Wines & Spirits

- **Tree Spirits**, tasting room for award winning wines and spirits made from local apples, pears and maple syrup, tours available, 152 Fairfield Street, Oakland, [www.treespiritsofmaine.com](http://www.treespiritsofmaine.com)



157 Main Street/RT 27  
Belgrade Lakes, Maine 04918  
[villageinnandtavern@gmail.com](mailto:villageinnandtavern@gmail.com)  
207.495.3553  
[www.villageinnandtavern.com](http://www.villageinnandtavern.com)

THE VILLAGE INN AND TAVERN  
Belgrade Lakes, Maine  
since 1921



WINTERBERRYFARMSTAND.COM

Route 27, Belgrade  
207.649.3331

**Cut Your Own Flowers**  
VISIT THE FARM ANIMALS AT WINTERBERRY FARM  
All Welcome!

Belgrade's working family farm  
**FARMSTORE & CAFÉ**  
Open 7 days a week, 9am - 6pm  
Featuring all-organic products grown and produced here on the farm.  
3 miles south of Belgrade Lakes  
Village on route 27.



### Skowhegan

- The Town of Skowhegan's Run of River Committee has received a \$15,000 grant from the Davis Conservation Foundation for the Run of River Whitewater Recreation Area. The area, in and around the Kennebec River Gorge in downtown Skowhegan, will include a whitewater park; an expanded and developed network of 4-season, non-motorized trails; a riverfront promenade; fishing waters with improved fish habitat and a boathouse/events center. For more about the project see [RunofRiver.org](http://RunofRiver.org). 612-2571
- Researchers on Mondays! Skowhegan History House Museum & Research Center is reserving Mondays for researchers only. The center is staffed with assistants who have experience conducting research, especially genealogy, from 10 am-1 pm, excluding holidays and holiday weekends. Regular services and tours will be offered Tuesday through Saturday, 10 am-4 pm through October 21. 474-6632

### Smithfield

- Smithfield Maine Historical Society is holding a Pancake Breakfast and food sale on Saturday, July 15 at the Smithfield Baptist Church on Lake View Drive, 7-10 am. Menu includes: hot fresh pancakes (with optional mini-chocolate chips, berries, crushed pineapple and whipped cream), sausage, baked beans, fruit bowl, orange juice and coffee. Adults \$7, children \$4 and preschoolers and younger free. There will also be a bake sale and yard sale next door at the Groves House, 8 am-3 pm.
- North and Little Pond residents can come by boat to the Acoustic Jam sessions being held the 3rd Saturday of every month, 6-9 pm at Fairview Grange, where the North Pond Association has added docks. The music is a great mix of per-

formers; bring your own acoustic instruments. Light food and drink are available for a modest charge, typically \$3. Donations are accepted at the door. Next session July 15.

### Waterville

- The Mid-Maine Chamber of Commerce has available a resource for bass fishermen, [www.midmainebass.com](http://www.midmainebass.com), to help local and visiting anglers find their way around Mid-Maine for the best bass fishing. The site includes topographical maps, photos of boat launches, lists of bait shops, marinas, lodging and restaurants, an events and tournaments section and a local lunkers and photo gallery. 873-3315
- A 2-day event, the Maine Celebrity Classic, to benefit the Alford Youth Center, North Street, Waterville, will take place at Sugarloaf Mountain on Wednesday and Thursday, July 26 and 27. On the 26th the Chef Celebrity Gala and on the 27 the Golf Celebrity Classic will feature 12 award-winning chefs to prepare dinner, live auction, silent auction, live music, dancing, overnight, and golf with one of 10 sports legends. [MaineCelebrityClassic.org](http://MaineCelebrityClassic.org)



See page 18 for more information on the Atlantic Music Festival.



**Pete's Pig**  
CATERING & BARBEQUE

Now Booking for 2018

- Corporate Functions
- Weddings & Rehearsals
- Special Events

Call (877) 860-1503  
(207) 495-4095

[www.petespig.com](http://www.petespig.com)

NEW MAINE TOURMALINE JEWELRY.

L. TARDIF JEWELER  
62 Main Street  
Waterville, Me.  
est. 1955

Tues - Sat  
9 - 5

207-872-7542

**SPIRO & COMPANY**  
**Gourmet Food Truck**  
**"A Fresh Taste of Greece"**  
Belgrade Lakes • 441-2103  
Open daily 11-4 • Friday 11-7  
[www.spiroandcompany.com](http://www.spiroandcompany.com)

[www.MaineAdirondackChairs.com](http://www.MaineAdirondackChairs.com)


Custom White Cedar Furniture  
by Rob Lemire

207-620-2592  
Vassalboro, Maine

Locally sourced  
Maine White Cedar

Free delivery within  
40 miles of Vassalboro

Assembled chairs  
Planed & sanded one side  
Thicker wood  
Save money  
Kits available for shipping







## -Business Directory-

### ACCOMMODATIONS

See page 18

### ADIRONDACK CHAIRS

**Maine Adirondack Chairs**, Vassalboro, 620-2592, [www.maineadirondackchairs.com](http://www.maineadirondackchairs.com)

### ART

**Colby College Museum of Art**, 5600 Mayflower Hill, Waterville, 859-4000, [www.colby.edu/museum/](http://www.colby.edu/museum/)

### BEVERAGES

**Tree Spirits**, 152 Fairfield St, Oakland, 861-2723, [www.treespiritsofmaine.com](http://www.treespiritsofmaine.com)

### BICYCLES

**Auclair Cycle & Ski**, 64 Bangor St, Augusta, 623-4351, [www.auclaircycle.com](http://www.auclaircycle.com)

### BOAT COVERS

**Waterville Upholstery & Canvas**, 1042 Kennedy Memorial Dr, Oakland, 465-7847, [www.watervilleupholstery.com](http://www.watervilleupholstery.com)

### BOAT LIFTS

**Hammond Lumber Company**, Auburn, Bangor, Belgrade, Boothbay Harbor, Brunswick, Damariscotta, Fairfield, Farmington, Greenville, Pemaquid, Portland, Skowhegan, Wilton, 1 866-HAMMOND, [www.hammondlumber.com](http://www.hammondlumber.com)

### BOAT MOORINGS

**Great Pond Marina**, 25 Marina Drive, Route 27, Belgrade Lakes, 495-2213, [www.greatpondmarina.com](http://www.greatpondmarina.com)

### BOAT RENTALS

**Castle Island Camps**, Long Pond, 441 Castle Island Road, Belgrade Lakes, 495-3312, [www.castleislandcamps.com](http://www.castleislandcamps.com)

**Great Pond Marina**, 25 Marina Drive, Route 27, Belgrade Lakes, 495-2213, [www.greatpondmarina.com](http://www.greatpondmarina.com)

### BOAT SALES AND SERVICES

**Clark Marine**, 57 Puddledock Road, Manchester, 622-7011, [mail@clarkmarine.biz](mailto:mail@clarkmarine.biz), [funonthewaterstartshere.com](http://funonthewaterstartshere.com)

**Hamlin's Marine**, 290 West River Road, Waterville, 872-5660, [www.hamlinsmarine.com](http://www.hamlinsmarine.com)

**Mid-Maine Marine and RV**, 885 Kennedy Memorial Drive, Oakland, 465-2146, [www.midmainemarine.com](http://www.midmainemarine.com)

### BOAT STORAGE

**Belgrade Boat Storage**, 31 Pinkham's Cove Road, Belgrade, 495-3421, 314-3287, [www.belgradeboatstorage.com](http://www.belgradeboatstorage.com)

**Belgrade Lakes Marine and Storage, Inc**, 366 Augusta Road, Belgrade, 495-2378, [www.belgradelakesmarine.com](http://www.belgradelakesmarine.com)

**Clark Marine**, 57 Puddledock Road, Manchester, 622-7011; and Route 202, Monmouth, [mail@clarkmarine.biz](mailto:mail@clarkmarine.biz), [funonthewaterstartshere.com](http://funonthewaterstartshere.com)

**Great Pond Marina**, 25 Marina Drive, Route 27, Belgrade Lakes, 495-2213, [www.greatpondmarina.com](http://www.greatpondmarina.com)

**Hamlin's Marine**, 290 West River Road, Waterville, 872-5660, [www.hamlinsmarine.com](http://www.hamlinsmarine.com)

**Maple Leaf Self Storage**, 688 Manchester Road, Route 135, Belgrade, 495-2191, 441-5529

**Mid-Maine Marine**, 885 Kennedy Memorial Drive, Oakland, 465-2146, [www.midmainemarine.com](http://www.midmainemarine.com)

### BOOKS

**Children's Book Cellar**, 52 Main Street, Waterville, 872-4543, [childrensbookcellar.com](http://childrensbookcellar.com)

### BUILDERS

**Craig's Carpentry/North Bay Estates**, Route 8, North Belgrade, Craig Alexander, 649-3749

**G&L Contracting**, 116 Lakeshore Drive, Belgrade Lakes, 215-7951, 495-2325, 233-7408, [gandlcontractingmaine.com](http://gandlcontractingmaine.com)

**LakeHouse Design, Build, Renovations**, 17 Birchwood Road, Augusta, 242-3663, [www.lakehousedesignbuild.com](http://www.lakehousedesignbuild.com)

### BUILDING MATERIALS

**Hammond Lumber Company**, Auburn, Bangor, Belgrade, Boothbay Harbor, Brunswick, Damariscotta, Fairfield, Farmington, Greenville, Pemaquid, Portland, Skowhegan, Wilton, 1 866-HAMMOND, [www.hammondlumber.com](http://www.hammondlumber.com)

### CAMP JACKING

Jacking and Leveling, John Webster, 32 Webster Way, Belgrade, 495-2965

### COMPUTER CONSULTANTS

**Macintosh Solutions**, Michael Breault, 24 Welch Road, Wilton, 645-5083, cell 578-0226, [www.michaelbreault.net](http://www.michaelbreault.net)

### DENTAL CARE

**Dental Hygiene Services**, North Vassalboro, 680-9377

### DINING

See Directory on page 15

### DOCKS

**Brown's Dock Services at Great Pond Marina**, 495-2600, 316-7514, [www.browndockservices.com](http://www.browndockservices.com)

**G&L Contracting**, 116 Lakeshore Drive, Belgrade Lakes, 495-2325, 215-7951, 233-7408, [gandlcontractingmaine.com](http://gandlcontractingmaine.com)

**Hammond Lumber Company**, Auburn, Bangor, Belgrade, Boothbay Harbor, Brunswick, Damariscotta, Fairfield, Farmington, Greenville, Pemaquid, Portland, Skowhegan, Wilton, 1 866-HAMMOND, [www.hammondlumber.com](http://www.hammondlumber.com)

### ELDER CARE

**Maine-ly Elder Care**, 28 Center Street, Oakland, 465-3249, [www.maine-lyeldercare.com](http://www.maine-lyeldercare.com)

### ENGINEERING

**Thayer Engineering**, septic design, storm water mitigation, permitting, 17 Hasson Street, Farmingdale, 582-7762, [www.thayereng.com](http://www.thayereng.com)

### ESTATE APPRAISALS

**F.A. Rizzo Appraisal Company**, estate appraisal and planning for real estate, 495-3365, 458-4916, [farizzo@roadrunner.com](mailto:farizzo@roadrunner.com)

### EXCAVATING

**Belgrade Boat Storage**, 31 Pinkham's Cove Road, Belgrade, 495-3421, 314-3287, [belgradeboatrentals.com](http://belgradeboatrentals.com)

**David Stevens**, P.O. Box 146, Belgrade, 465-3815, cell 314-0314

### EYE CARE

**Eye Care of Maine**, 325 E. Kennedy Memorial Drive, Waterville, 873-2731, 1-800-660-3403, [www.Maine2020.com](http://www.Maine2020.com)

### FARMSTANDS

**Winterberry Farm**, 538 Augusta Road, Route 27, Belgrade, 495-2593, 649-3331, [www.winterberryfarmstand.com](http://www.winterberryfarmstand.com)

### FINANCIAL PLANNING

**Golden Pond Wealth Management**, 129 Silver Street, Waterville, 873-2200, [www.goldenpondwealth.com](http://www.goldenpondwealth.com)

### FIREWOOD

**J & M Logging, Inc.** 853 Civic Center Drive, Augusta, 622-6353, [www.jmlogginginc.com](http://www.jmlogginginc.com)

### FLOORING

**Hammond Lumber Company**, Auburn, Bangor, Belgrade, Boothbay, Brunswick, Damariscotta, Fairfield, Farmington, Greenville, Pemaquid, Portland, Skowhegan, Wilton, 866-HAMMOND, [www.hammondlumber.com](http://www.hammondlumber.com)

### GENERATORS

**Generators of Maine**, 262 Augusta Road, Belgrade, 495-2285, [www.generatorsofmaine.com](http://www.generatorsofmaine.com)

### GOLF

**Natanis Golf Course**, 735 Webber Pond Road, Vassalboro, 622-3561, [www.natanisgc.com](http://www.natanisgc.com)

### HEALTH CENTERS

**Belgrade Regional Health Center**, 4 Clement Way, Belgrade Lakes, 495-3323, [www.healthreachchc.org](http://www.healthreachchc.org), [belgradechc.org](http://belgradechc.org)

**Inland Hospital**, 200 Kennedy Memorial Drive, Waterville, 861-3000, 1-800-491-8600, [www.inlandhospital.org](http://www.inlandhospital.org)





INSECT CONTROL

Mosquito Banditos, ,  
mosquitobanditos-maine.com, 613-5656

JEWELRY

L.Tardif Jeweler, 62 Main St., Waterville,  
872-7542, ltardifjewelers.com

KITCHENS

Hammond Lumber Company, Auburn, Bangor,  
Belgrade, Boothbay, Brunswick, Damariscotta,  
Fairfield, Farmington, Greenville, Pemaquid,  
Portland, Skowhegan, Wilton, 866-HAMMOND,  
www.hammondlumber.com

LAKE ASSOCIATIONS

Belgrade Lakes Association (BLA), Long Pond  
and Great Pond, PO Box 551, 137 Main Street,  
Belgrade Lakes, 512-5150,  
belgradelakesassociation.org

LANDSCAPING

G&L Contracting, Belgrade Lakes, 215-7951,  
495-2325, 233-7408, gandlcontractingmaine.com  
Lynch Landscaping, Skowhegan, 474-2420,  
lynchlandscaping.com

MASSAGE THERAPIST

Jeannie G., 120 Drummond Avenue,  
Suite 1, Waterville, 509-1251

MOVIE THEATERS

Railroad Square Cinema, call for titles and times,  
17 Railroad Square, Waterville, 873-6526,  
www.railroadsquarecinema.com

MUSEUMS

Antique Outboards of Belgrade, 51 Dry Point  
Drive, Rome, 495-3302  
Colby College Museum of Art, 5600 Mayflower  
Hill, Waterville, 859-5600, www.colby.edu/museum/

PHYSICAL THERAPY

Dockside Physical Therapy, 47 Main Street,  
Belgrade Lakes, 495-3195, 512-2544,  
Fax 512-2545

PIANO ENJOYMENT

Diane Gorman, 906 Manchester Road, Belgrade,  
495-3222

PLUMBING

Paul Hanna's Plumbing, Belgrade, 495-3805

REAL ESTATE DEVELOPMENTS

North Bay Estates, Belgrade, 649-3749,  
crgsnbe@yahoo.com

REAL ESTATE

Day's Real Estate, 262 Augusta Road, Route 27,  
Belgrade Lakes, 495-3111, www.daysrealestate.com  
Hoang Realty, 31 Western Ave., Augusta, 623-0623,  
www.hoangrealty.com

Lakepoint Real Estate, 221 Main Street, Belgrade  
Lakes, 495-3700,  
www.belgradelakepoint.com

Sprague & Curtis Real Estate, 75 Western Avenue,  
Augusta, 623-1123,  
www.spragueandcurtis.com

LODGING RESERVATIONS

See page 14

RESTAURANTS

See Dining Directory on page 15

RETIREMENT COMMUNITIES

Granite Hill Estates, 60 Balsam Drive, Hallowell,  
626-7786, 1-888-321-1119,  
www.granitehillestates.com

SAILING

Crooked Island Sailing, lessons, rentals, deliveries,  
Peter McManus, Belgrade Lakes, 495-9066,

SCHOOLS

St. Michael School, grades pre-K 3-year-old  
through 8th, 56 Sewell Street, Augusta,  
623-3491, www.smsmaine.org

SECURITY SYSTEMS

Cayer Security Services, Inc, 208 College Avenue,  
Waterville, 453-9177,  
www.cayersecurity.com

SELF STORAGE

Maple Leaf Self Storage, 688 Manchester Road.,  
Route 135, Belgrade, 495-2191

SURVEYING

Acme Land Surveying, 108 Fairbanks Road, Suite  
5, Farmington, 778-4081,  
www.acmelandsurveying.com

WINDOWS

Hammond Lumber Company. Auburn, Bangor,  
Belgrade, Boothbay, Brunswick, Damariscotta,  
Fairfield, Farmington, Greenville, Pemaquid,  
Portland, Skowhegan, Wilton, 1-866-HAMMOND,  
www.hammondlumber.com

LAKE AND LAND ASSOCIATIONS

THE BELGRADES...

- East Pond Association, Smithfield/Oakland,  
www.eastpond.org
- North Pond Association,  
Smithfield/Rome/Mercer, www.northpond.net
- McGrath Pond/Salmon Lake Association (MPSL),  
Belgrade/Oakland, P.O. Box 576, Oakland, 04963,  
873-5285, www.mcgrathpond-salmonlake.org
- Belgrade Lakes Association (BLA) for Great Pond  
and Long Pond, Belgrade/Rome/Mount Vernon, PO  
Box 551, 137 Main Street, Belgrade Lakes, 04918,  
512-5150, www.belgradelakesassociation.org
- Friends of Messalonskee,  
Oakland/Belgrade/Sidney, PO Box 532, Oakland,  
04963, 465-4622, www.friendsofmessalonskee.com
- Belgrade Regional Conservation Alliance and  
BRCA Conservation Corps, PO Box 250, 137 Main  
Street, Belgrade Lakes, 04918, 495-6039,  
www.belgradelakes.org
- Belgrade Lakes Region Business Group  
(BLRBG), PO Box 596, Belgrade Lakes, 04918,  
495-3700, www.belgradelakesmaine.com
- Maine Lakes Resource Center/Docks to  
Doorways, PO Box 431, 137 Main Street, Belgrade  
Lakes, 04918, 495-3617, 620-6029,  
www.mainelakesresourcecenter.org

BEYOND...

- Friends of the Cobbossee Watershed, PO Box  
5003, Augusta, 04332-5003, 621-4100,  
www.watershedfriends.com
- Franklin County Soil & Water Conservation  
District, 107 Park Street, Farmington 04938, 778-4279,  
www.franklincswcd.org
- Kennebec County Soil & Water Conservation  
District, 21 Enterprise Drive, Augusta 04330,  
622-7847, ext. 3, www.kcswwcd.org
- Somerset County Soil & Water Conservation  
District, 12 High Street, Skowhegan 04976, 474-8324,  
www.somersetswcd.org
- Kennebec Land Trust (KLT), PO Box 261, 331  
Main Street, Winthrop, 04364, 377-2848, www.tkl.org
- Kennebec Messalonskee Trails, PO Box 2388,  
Waterville, 04903, 873-6443, www.kmtrails.org
- Kennebec River Rail Trail, PO Box 2195, Augusta,  
04338, 623-8162, www.krrt.org
- 30 Mile River Watershed Association (30 MRWA),  
Kimball Pond in Vienna to the Androscoggin River,  
PO Box 132, Mt Vernon, 04352, 685-4956,  
www.30mileriver.org
- Maine Lakes Society, formerly Congress of Lake  
Associations, PO Box 447, 137 Main Street, Belgrade  
Lakes, 04918, 1-855-463-2652
- Central Maine chapter of the New England  
Mountain Bike Association (CeMeNEMBA),  
441-6227, www.cemenemba.org

Changes?  
Updates?

New contact information?  
Please let us know...  
mo.breault@gmail.com  
or ebelnews@earthlink.net





## Music Festival Offers Free Classical Concerts in Waterville

by Grgor Smith

Classic music lovers, rejoice! Starting this Saturday and continuing for the rest of July, the Atlantic Music Festival will present a series of free concerts at Colby College on Mayflower Hill Drive in Waterville.

Now in its ninth year, the festival will bring some 180 musicians — faculty, students, fellows, and guest artists — to the Colby campus for four weeks of private lessons, master classes, rehearsals, and performances. The students and fellows are mostly in their twenties and are either still in school or just starting their professional careers, while the faculty and guest artists tend to be older, more established musicians. Although at least half of the participants are from the United States, fifteen other countries on six continents will be represented this year, most prominently South Korea, China, Taiwan, and Australia.

Thanks to its Composition Program, which enables aspiring composers to refine their craft, new music has always been a hallmark of the festival. During its first eight years, the festival has offered world premieres of over 300 works — pieces that have not been previously performed in public or commercially recorded. During its ninth season, the festival expects to introduce at least 40 more.

Thus it is fitting that this year's opening concert will be of new music. (And no, "new" does not mean weird or atonal; most of the works are quite melodic.) That concert will take place Saturday, July 8, at 1:00 p.m. in Lorimer Chapel. If you can't make it on Saturday, you will have two more chances to hear new music, on Thursday, July 13 and Tuesday, July 18, both days at 7:00 p.m.

The festival's concert series will begin in earnest the following Wednesday, July 12, with the first of seven chamber music performances. From that point on, there will be a concert nearly every night, and on Saturday afternoons as well, until July 29.

These chamber music soirées will feature soloists, duets, trios, and other small ensembles playing instrumental works of different eras and styles. These 7:00 p.m. chamber concerts form the festival's backbone; they will be held every Wednesday and Friday through July 28, and also on Saturday, July 22.

While Wednesdays and Fridays will be devoted to instrumental music, one can thrill to vocal pyrotechnics on Thursdays. On July 20, members of the AMF



Opera Workshop will present a series of semi-staged opera scenes in Strider Theater, with costumes and some props and set pieces. The following Thursday, they will present a more basic performance of art songs in the chapel.

Lovers of piano music will get their turn on Saturdays, July 15 & 22, at 3:00 in Given Auditorium, when participants in the festival's Piano Institute will demonstrate their skill. Additionally, the winner of the festival's annual piano competition, a juried competition in which students compete for a \$1000 cash prize, will perform a solo recital on Monday, July 24, at 7:00 in Lorimer Chapel.

Finally, if you crave the sound of a full symphony orchestra, come to the chapel on Saturdays, July 15 & 29. In the first performance, the AMF Orchestra will present Richard Strauss's orchestral suite *Der Bürger als Edelmann*, Ludwig van Beethoven's *Leonora Overture No. 3*, and Béla Bartók's *Dance Suite*. The program for the second concert, which will close this year's festival, has yet to be announced.

Admission to all AMF performances is free, and except where noted above, concerts will take place in Lorimer Chapel and will start at 7:00 p.m. The schedule is subject to change, and more performances may be added. For the latest information, visit the AMF website at [www.atlanticmusicfestival.org](http://www.atlanticmusicfestival.org) or call the AMF office at (888) 704-1311.



Original Artwork Designed by Nate Tremé

20th Annual  
**MIFF**  
Maine International Film Festival  
July 14-23, 2017  
[miff.org](http://miff.org)

Colby Waterville Creates! MPBN MAINE FILM CENTER

spragueandcurtis.com

**Sprague & Curtis**  
Real Estate

6 2 3 . 1 1 2 3

75 Western Ave. • Augusta, ME

WATERFRONT-PURGATORY STREAM — Like new, top quality home w/large well landscaped yard & stream views. Open interior w/vaulted ceilings. Bright & airy. Glass doors to yard/back deck. Beautiful kitchen w/center island, 3BR (master suite w/bath), DR, lg LR, 2 full BA w/skylights, separate laundry rm. 2X30 oversized 2 car garage w/paved drive. A must see!! PROPERTY PRICED BELOW TOWN ASSESSED VALUE. #1302710 \$174,900

WATERFRONT-COBBOSEE LAKE — Wonderful turn of the century 3BR, 1.5 BA seasonal cottage on the W shore of 9 mi Cobbosee Lake. Wonderful for boating, fishing, or just relaxing. Pretty setting, gorgeous lake views. Simple, rustic, charming. Lots of enjoyment to be had here. Furnished. Convenient location, easy access to Augusta, Winthrop and I-95. Brand new septic treatment system being installed. #1303011 \$225,000

WATERFRONT-WARD POND — Quiet & peaceful, just minutes from I-95, Maine General Hospital & Civic Center/Marketplace. Pleasant 3BR, 1.5 BA, Gambrel style home on a pretty 2 ac lot w/200 ft of waterfront. Moderately private setting. Open DR/LR w/gorgeous stone fireplace. Front screened porch. 24x26 barn garage w/full 2ND fl, 12x20 open shed. Full basement. Mostly wooded, quiet setting, nice frontage w/gentle incline into the water. #1275808 \$229,900

WATERFRONT-COBBOSEE LAKE — Lovely 3 season West shore Cottage w/yr round access. Easy access, convenient location. Extensively renovated approx. 20 yrs ago. Bunk house/shed. Electric heat plus a wood stove. Sliding glass doors to side deck. Wood siding, metal roof, HW floors, modern kitchen, BA. Insulated walls. Pretty views of the lake. Lots to enjoy! #1290689 \$275,000

WATERFRONT-MARANACOOK LAKE — 1.5 acre lot w/beautiful Lake views. Excellent Village location near schools, easy commute to Augusta or Winthrop. Level lot, excellent frontage, Southerly views. Lots like this are hard to find. Great opportunity! #1122954 \$279,900

WATERFRONT-ANNABESSACOOK LAKE — Meticulously kept 3BR year round home w/spectacular lake views. Lots of recent updates, including new kitchen w/granite, open interior w/lots of windows, fabulous lake views from most rooms. Open feel, updated throughout. Remodeled baths, newer windows, metal roof, vinyl siding, more. Nice basement storage/workshop. Oversized 1 car garage. Convenient location, easy access, dock. #1303050 \$279,900

COMMERICAL WATERFRONT-KENNEBEC RIVER — Charming Circa 1800's storefront building in beautiful and Historic Hallowell. Retail space on street level plus a charming two bedroom apartment on the upper level. The apartment has a balcony and beautiful views of the Kennebec River as it makes its way to the ocean. Be a part of this vibrant little city. #1308348 \$280,000

WATERFRONT-CHINA LAKE — Very well maintained waterfront home w/many nice features! Lrg 1.3 ac lot w/back & front yards and a gentle decline to the water, 150' of WF, 3-4BR, 2 full BA, newer kitchen w/appliances, dining area w/vaulted ceilings, bright/sunny, freshly painted exterior, FR & BR in lower level, gas fireplace in LR, generator included. Newer dock system. #1313781 \$369,000

WATERFRONT-TOGUS POND — Over 11 ac-3 separate lots- 310' of waterfrontage. Level entry into water, completely updated 2007-08. Loft office w/excellent water view, beautiful chefs kitchen w/lrg center Isle & pantry, open concept- 1 level living, mahogany HW flrs- ceramic tile, Gas stove w/hearth in LR, 2-3BR, 2 full BA (stunning master bath) heated 2 car grg, 3 season rm, private back patio, radiant propane heat, roof solar panels. Pretty landscaping w/berry/fruit trees. A MUST SEE!! #1309469 \$389,900





# Summer Seminars to be Held at the Klahr Center

The Holocaust and Human Rights Center of Maine [HHRC] has scheduled three, two-day Summer Seminars for educators and life-long learners; and one Summer Seminar for students in grades 8 through 12 at the Michael Klahr Center, located on the University of Maine at Augusta campus this July and August.

On July 11th and 12th the HHRC will offer Yearning to Breathe Free: The Immigrant Experience in Maine. Inspired by the HHRC’s recent exhibit of the same name, this program will focus on firsthand stories of past and current immigration, as well as how to teach Maine history through the eyes of immigrants. Participants will learn about the histories of the Swedes and Armenians in Maine, as well as get a sneak preview of the upcoming exhibit at the Maine State Museum focusing on Jewish life in Maine. Additional sessions will focus on the experiences of refugees, municipalities and immigration, a first person account from a volunteer at an internment camp for Latino and Mexican nationals in Texas, and an up to the minute report on immigrant and refugee issues addressed in the latest session of the Maine Legislature.

The second seminar, Democracy at Risk: Holocaust and Human Behavior, will be held on July 17th and 18th. Presented in partnership with the award-winning curriculum of Facing History

and Ourselves, participants will learn current scholarship on the history of the Holocaust and new research focused on human behavior, group dynamics, and bias; Increase their ability to facilitate respectful classroom discussions on difficult issues such as racism, antisemitism, and other forms of exclusion in a way that invites personal reflection and critical analysis; Learn a new way of structuring curriculum to help students connect history to their own lives and the choices they make; Engage with classroom-ready multimedia resources and learn how to build a customized unit

that meets your curriculum objectives; Discover new teaching strategies that help students interrogate text, think critically, and discuss controversial issues respectfully.

This workshop is intended for middle and high school teachers of history, literature and humanities. Independent evaluation has shown that implementing Facing History’s approach improves students’ higher-order thinking skills, increases students’ civic efficacy and engagement with civic matters, and increases students’ tolerance for oth-

Continued on page 9....



### The Top Five Places for a Great View in Belgrade Lakes

Some of the best things to do in Belgrade Lakes come with amazing views of the area.

- #5: **French Mountain**; With just a short hike you'll have incredible views of the Lakes.
- #4: **Round Top Trailhead**; These trails are a part of the Kennebec Highlands and the trails are made for biking and hiking.
- #3: **The Mountain Trailhead**; This hike is a little easier with amazing views of Long Pond.
- #2: **Blue Berry Hill**; No hiking required on this one! Just a short drive to the top and you'll have amazing views of the Lakes.
- #1: **Belgrade Lakes Golf Course**; There is no better place to play golf and see the Lakes! Have a beer on the patio and get lost in the tranquil sights of both Great Pond and Long Pond!

For more information and trail maps call your local real estate office!

## BELGRADE REGIONAL HEALTH CENTER

4 Clement Way, Belgrade, ME 04917 • 207.495.3323 • BelgradeCHC.org

Your Family's Home for Health and Wellness



Please join us  
in welcoming  
◀ Katie Morang, FNP  
and  
Janine White, FNP ▶  
to our health center!



Have a Healthy and Safe Summer!



Jennifer Caudell FNP	Amy Madden MD	Bert Mason DPM	Katie Morang FNP	Kimberly Patnode LCSW	Diane Raymond PhD, PMHNP	Janine White FNP
----------------------------	---------------------	----------------------	------------------------	-----------------------------	--------------------------------	------------------------

We Accept All Insurances, MaineCare and offer Sliding Fee Scale



“ The Golden Age is before us, not behind us”  
....William Shakespeare



Whether you are 55 or 85  
Our mission is the same...  
Grow and protect your family's  
treasure for your “Golden Age”

129 Silver St, Waterville, ME Phone: (207) 873-2200  
www.goldenpondwealth.com

Securities offered through LPL Financial, Member FINRA/SIPC





## Your own little island of

# FUN

**LARGEST  
SHOREMASTER  
DISTRIBUTOR  
in the  
COUNTRY**

Improve your lake shore living experience with a **SHOREMASTER SWIM RAFT**. Kids and adults alike will enjoy years of fun and treasured memories.

We Cover The Waterfront.

**SHOREMASTER**

### SWIM RAFTS

90" x 114" Poly Swim Raft – Poly Deck - Yellow or Gray	<b>\$1,169</b>
8'x8' Aluminum Swim Raft Cedar Deck	<b>\$1,629</b>
8'x8' Aluminum Swim Raft Aluminum Deck	<b>\$2,059</b>
8'x8' Aluminum Swim Raft White Aluminum	<b>\$2,139</b>
Rip Raft – Tan or Orange	<b>\$879</b>

Ladder sold separately

3 step pivot ladder	\$289
4 step pivot ladder	\$339
5 step pivot ladder	\$399
Nylon Rope Ladder (Rip Raft only)	\$57
2 step Rip Raft Ladder	\$215

Toll-free 1-866-HAMMOND

## Hammond Lumber Company

Visit us online at  
[www.hammond-shoremaster.com](http://www.hammond-shoremaster.com)  
for a 82-page Product Planning  
Guide & Price List.

AUBURN • BANGOR • BELGRADE • BOOTHBAY HARBOR • BRUNSWICK • DAMARISCOTTA  
FAIRFIELD • FARMINGTON • GREENVILLE • PEMAQUID • PORTLAND • SKOWHEGAN • WILTON

# Lakepoint

REAL ESTATE

207.495.3700

221 Main St.,  
Belgrade Lakes, ME 04918

[www.belgradelakepoint.com](http://www.belgradelakepoint.com)



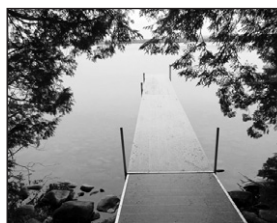
**FAIRFIELD**: Charming Antique Cape w/historic beams, original wood floors and 2 stall garage. #1312950 **\$104,900**



**SMITHFIELD**: Over 3100 Sq.Ft living space. 7.4 acres. 2-3 stable barn. Beautiful "Fireplace Xtraordinary". Stereo Surround Sound. Radiant Heat. Much more. #1297082 **\$199,000**



**LONG POND, BELGRADE**: 3BR/2BA, deck, 1st floor insulated for year-round use and lots of extra space with a sleeping loft and beautiful Sandy Cove Beach. #1309003 **\$255,000**



**GREAT POND, BELGRADE**: Remarkable 60 +/- acres w/deeded access on Great Pond. Beautiful sunsets. Boat to Belgrade Lakes Village #1308516 **\$299,000**



**LITTLE NORTH POND, ROME**: Open floorplan with lots of windows, stone hearth, 2 full baths, lge master BR, home comes furnished. #1269882 **\$245,000**



**MT VERNON**: 11 rooms w/4 plus BR/2BA in main house. 50x20 3 bay garage, 36x41 Barn w/room for 7 guests. Loads more. #1313641 **\$419,000**



**VIENNA**: 25 acres of paradise. Peaceful views, lots of wildlife with 2 private ponds (5 acres and 2 acres). #1313205 **\$119,000**



**LONG POND ACCESS, MT VERNON**: 4BR/3BA, 8.95 acres. 850' shared waterfront. 2 horse stall barn. Lge deck, porch, shop and more. #1282731 **\$269,000**



**LONG POND, MT VERNON**: Large views all the way up Long Pond! Open living Log Cabin right at water's edge with great deck! Guest cottage. 200' +/- frontage on 2.25 acres. #1306038 **\$524,900**

## GRANITE HILL ESTATES

Part of:  
MaineGeneral Health



## Retire your way. Today!

In a community that cares.

Now's the time to join the family at **Granite Hill Estates**, central Maine's premiere continuing care retirement community and part of **MaineGeneral Health**. Call 207-626-7786 or toll free 1-888-321-1119 today schedule a tour. Offering an impressive menu of amenities:

- Spacious cottage homes and apartments
- Elegant full-service dining plan
- Maintenance and housekeeping services
- Scheduled courtesy transportation
- Social, cultural and educational programs
- Indoor swimming pool complete with hot tub
- Cozy reading room, library and bank
- Attractive game, billiard, and meeting rooms
- Fitness center with an on-site fitness coordinator
- Convenient hair salon, massage spa and meditation room
- Wooded walking trails throughout our 135 acre campus

Awarded  
**Highest Honors**  
for  
**Resident  
Satisfaction**

Holleran National  
Senior Living Survey



email: [info@granitehillestates.com](mailto:info@granitehillestates.com)

60 Balsam Drive, Hallowell, ME 04347

207-626-7786

1-888-321-1119

[granitehillestates.com](http://granitehillestates.com)

## What goes up must come down?

Avoid fluctuating interest rates.

Lock in a low fixed rate  
mortgage today.

And you could save  
**\$500 off closing costs.**

Apply now at  
[skowhegansavings.com](http://skowhegansavings.com)  
or call **1.800.303.9511**



\*Offer good for new mortgages from May 1st to July 31st, 2017. Not applicable for Maine State Housing. Cannot be combined with any other offer. All loans are subject to credit approval.



**Skowhegan  
Savings** FDIC

**Straight Talk. Fair Deals.**