

8-2005

Maine Economic & Demographic Trends, 2005

Maine State Planning Office

Galen Rose

Maine State Planning Office

Follow this and additional works at: http://digitalmaine.com/spo_docs

Recommended Citation

Maine State Planning Office and Rose, Galen, "Maine Economic & Demographic Trends, 2005" (2005). *State Planning Office*. Paper 19.

http://digitalmaine.com/spo_docs/19

This Text is brought to you for free and open access by the State Documents at Maine State Documents. It has been accepted for inclusion in State Planning Office by an authorized administrator of Maine State Documents. For more information, please contact statedocs@maine.gov.

Maine Economic & Demographic Trends

By Galen Rose

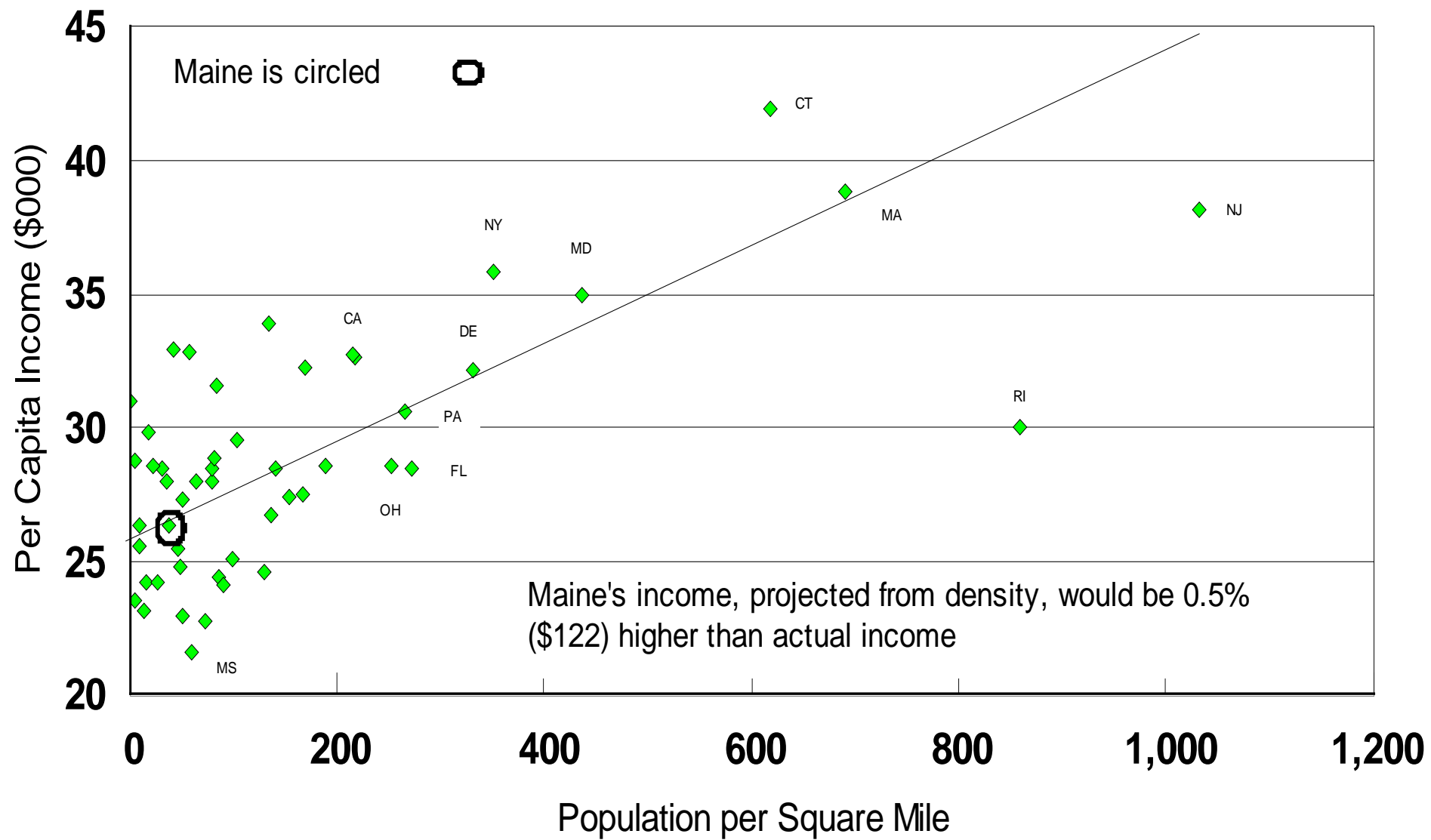
Economist

Maine State Planning Office

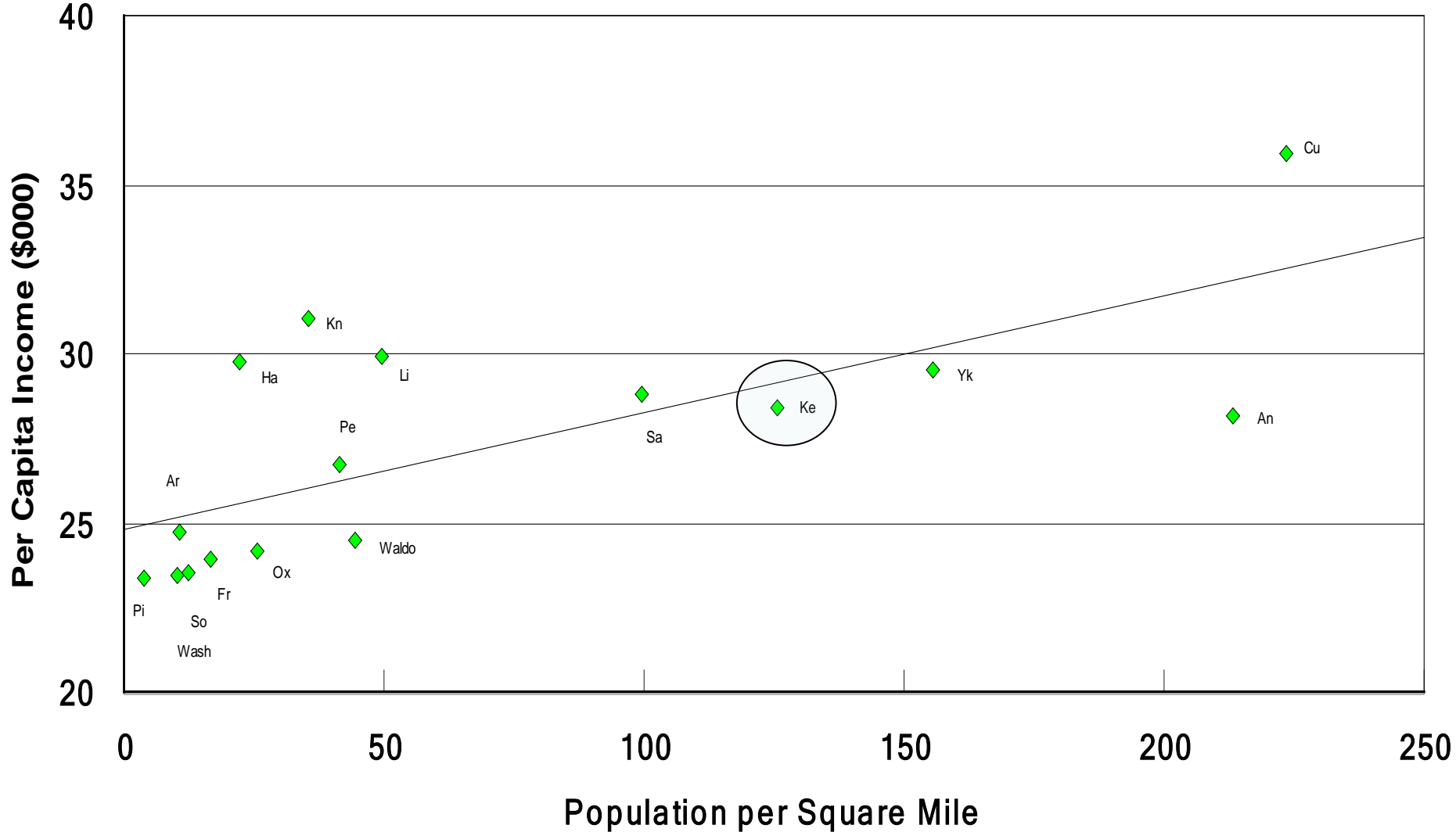
August 2005



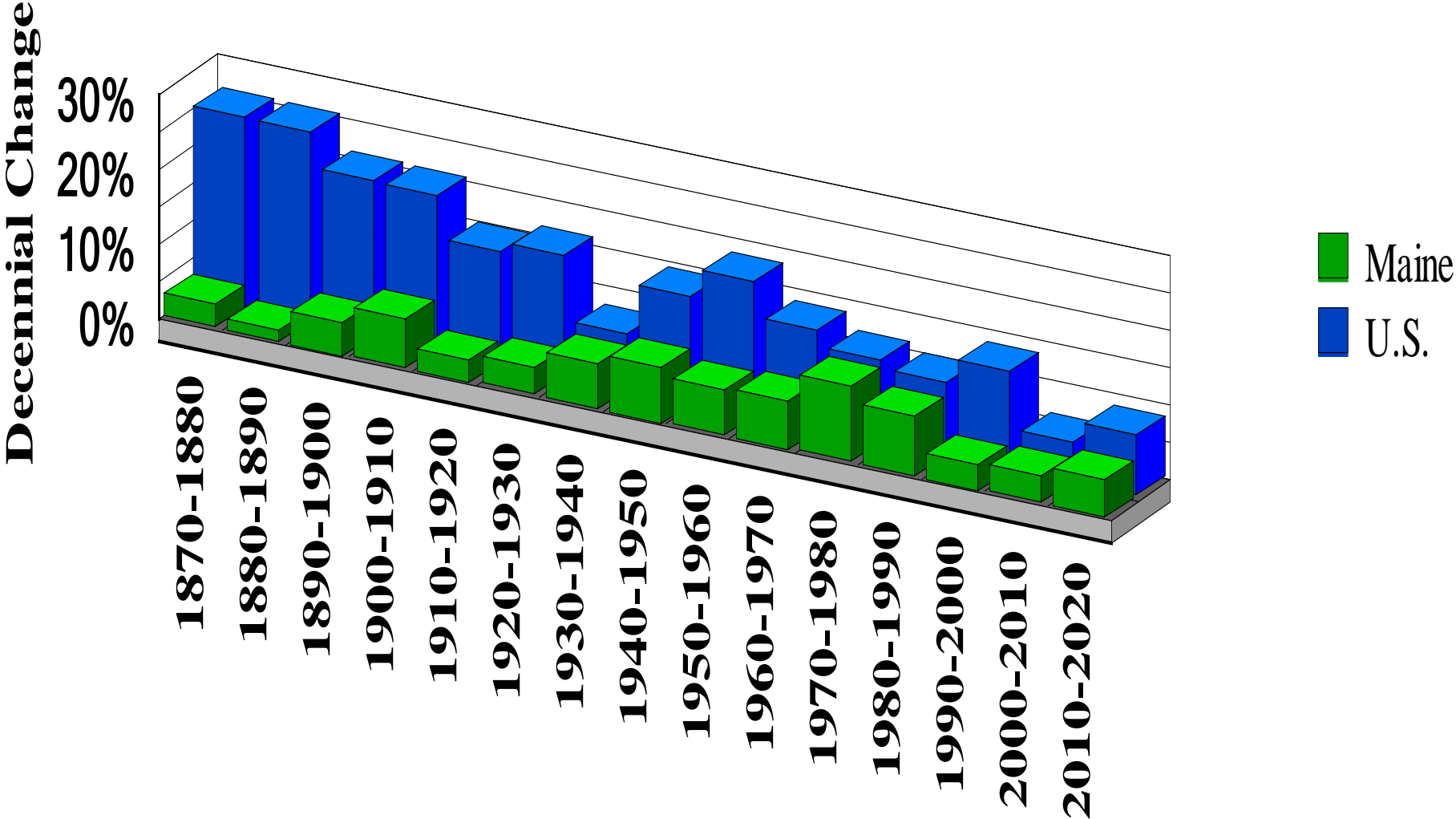
State Per Capita Income versus Population Density (2003)



Maine County Per Capita Income versus Population Density (2003)



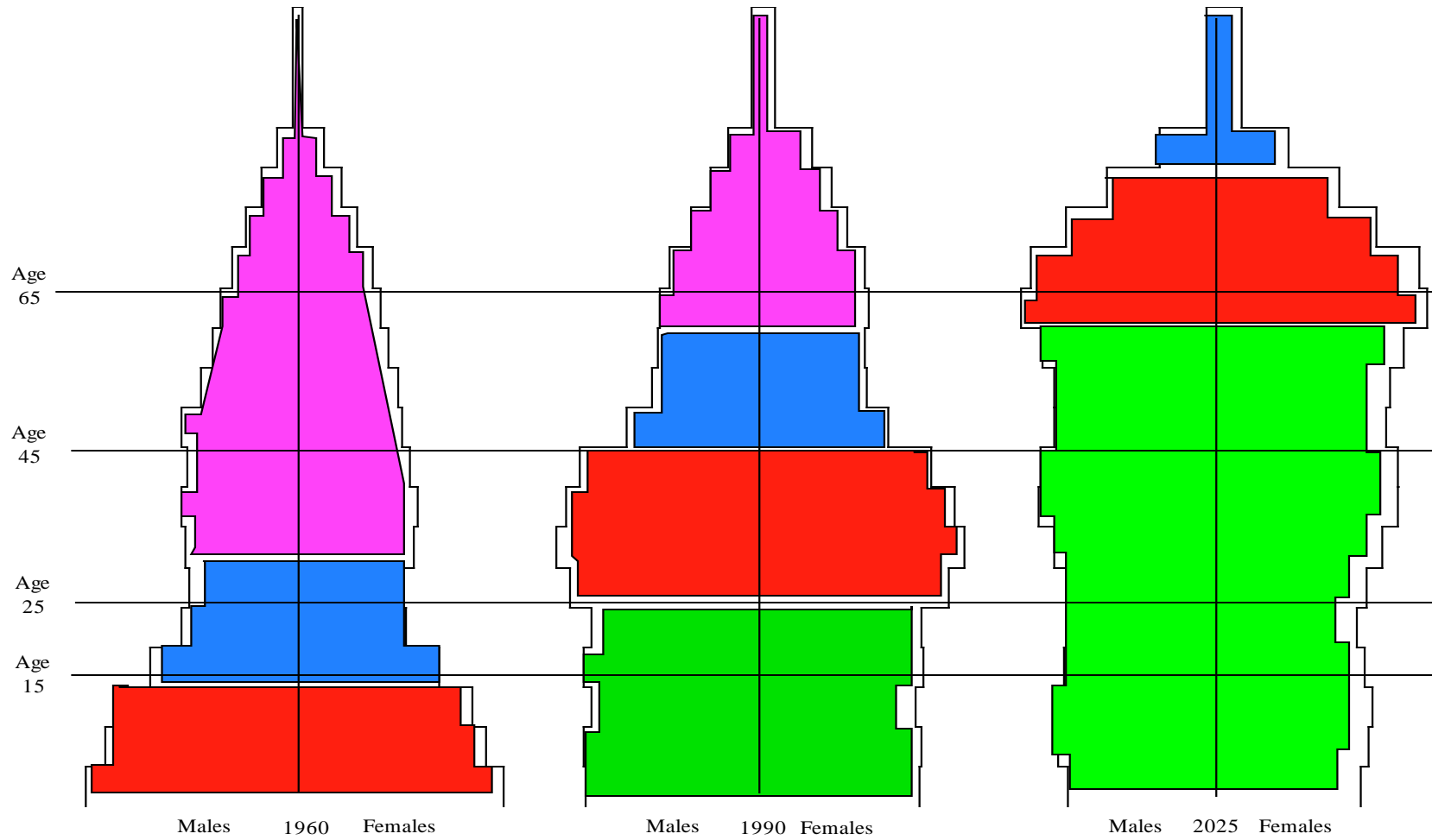
Actual and Projected Decennial Population Increases Maine and U.S. 1870 to 2020



Reasons for Maine's slow Population Growth

- **Average age is oldest of all US states (40.2 in 2003)**
- **Predominately white population (97%)**
- **Not a major immigration destination**

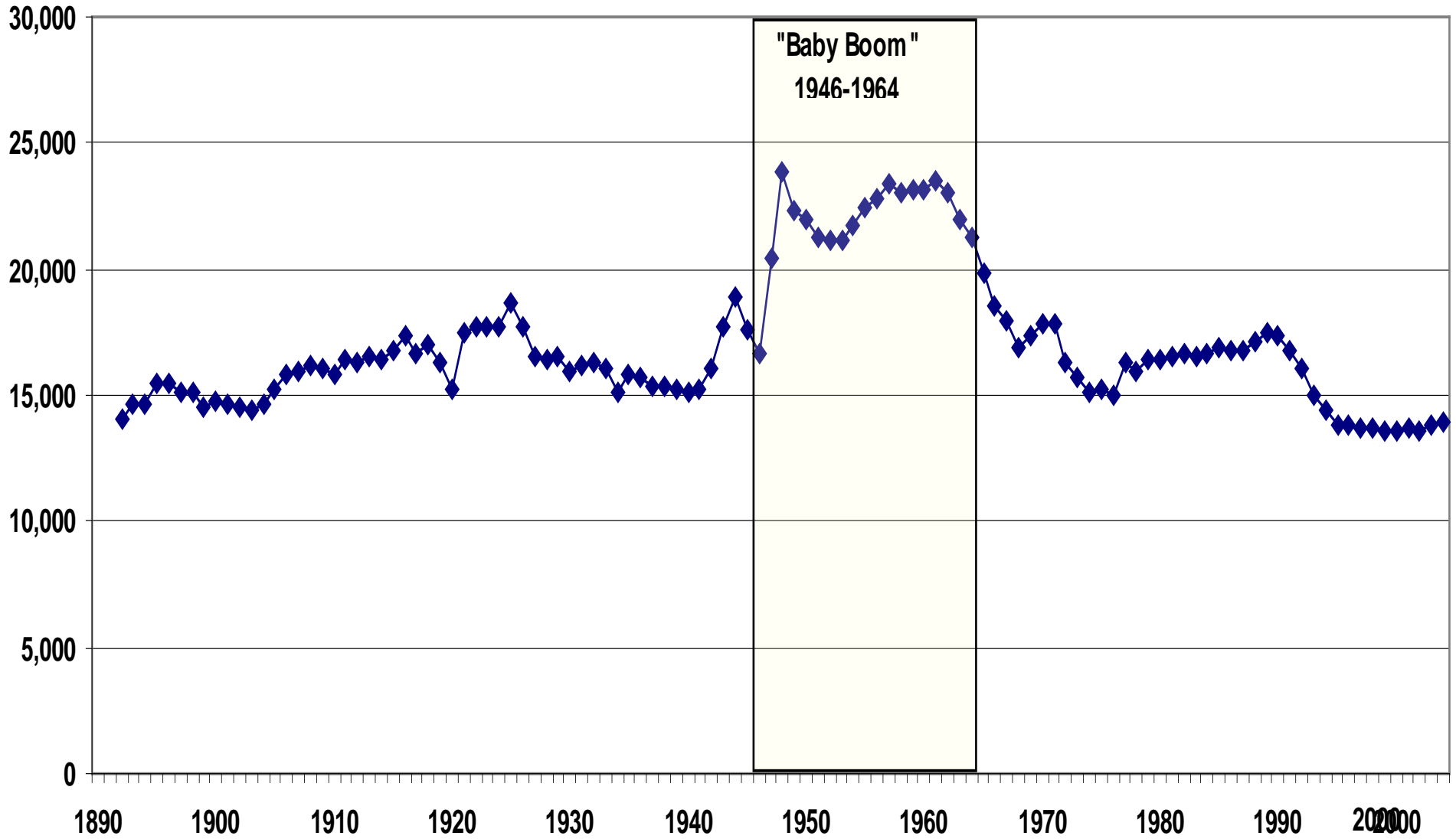
Age and Sex Composition of the Maine Population 1960, 1990 and 2025



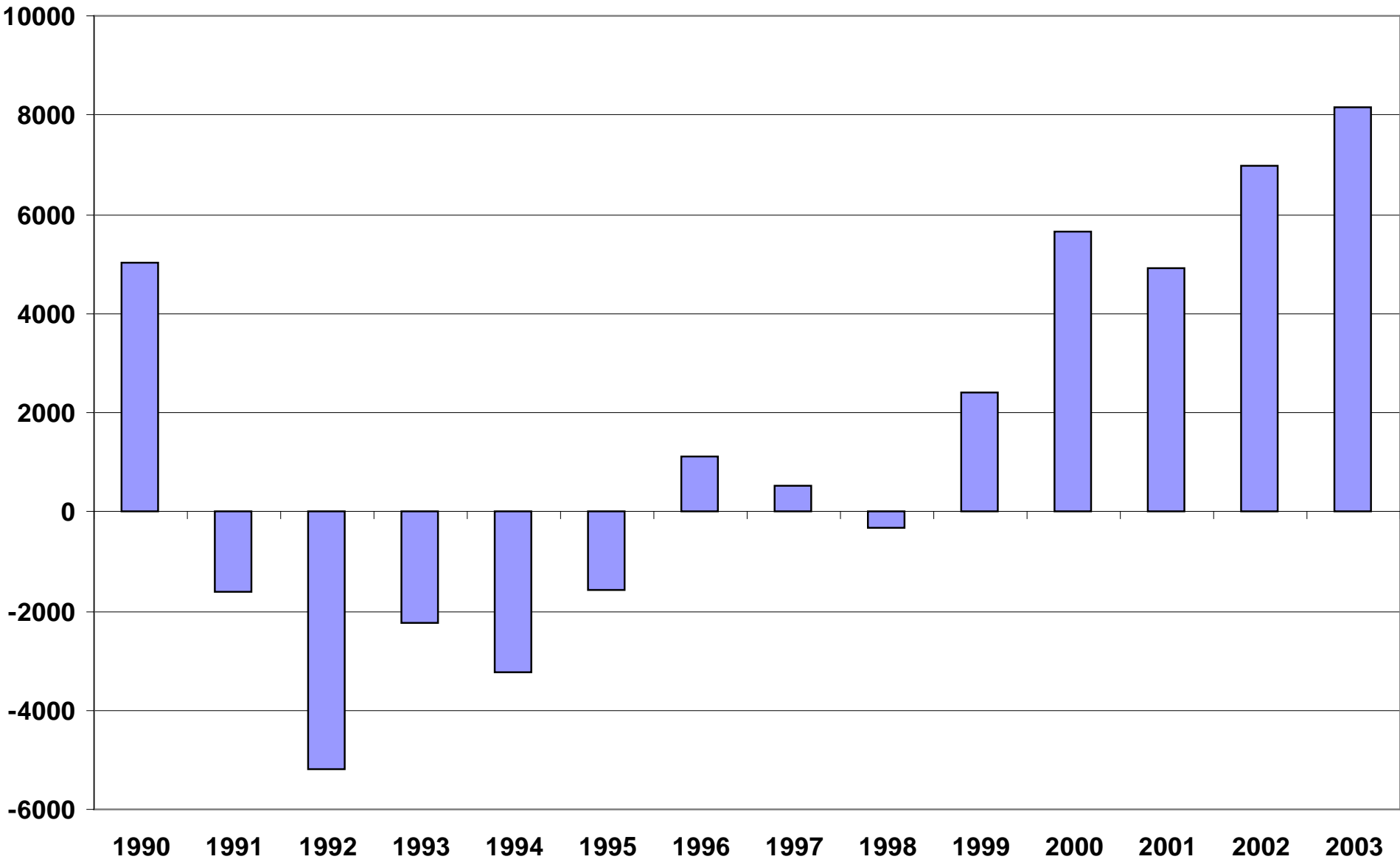
Data Source: U.S. Census Bureau, 1960 and 1990 Decennial Censuses and Projection Issued October 1996

Born before Great Depression
 Born during Great Depression & WWII
 Born during Post-WWII Baby Boom
 Born after Post-WWII Baby Boom

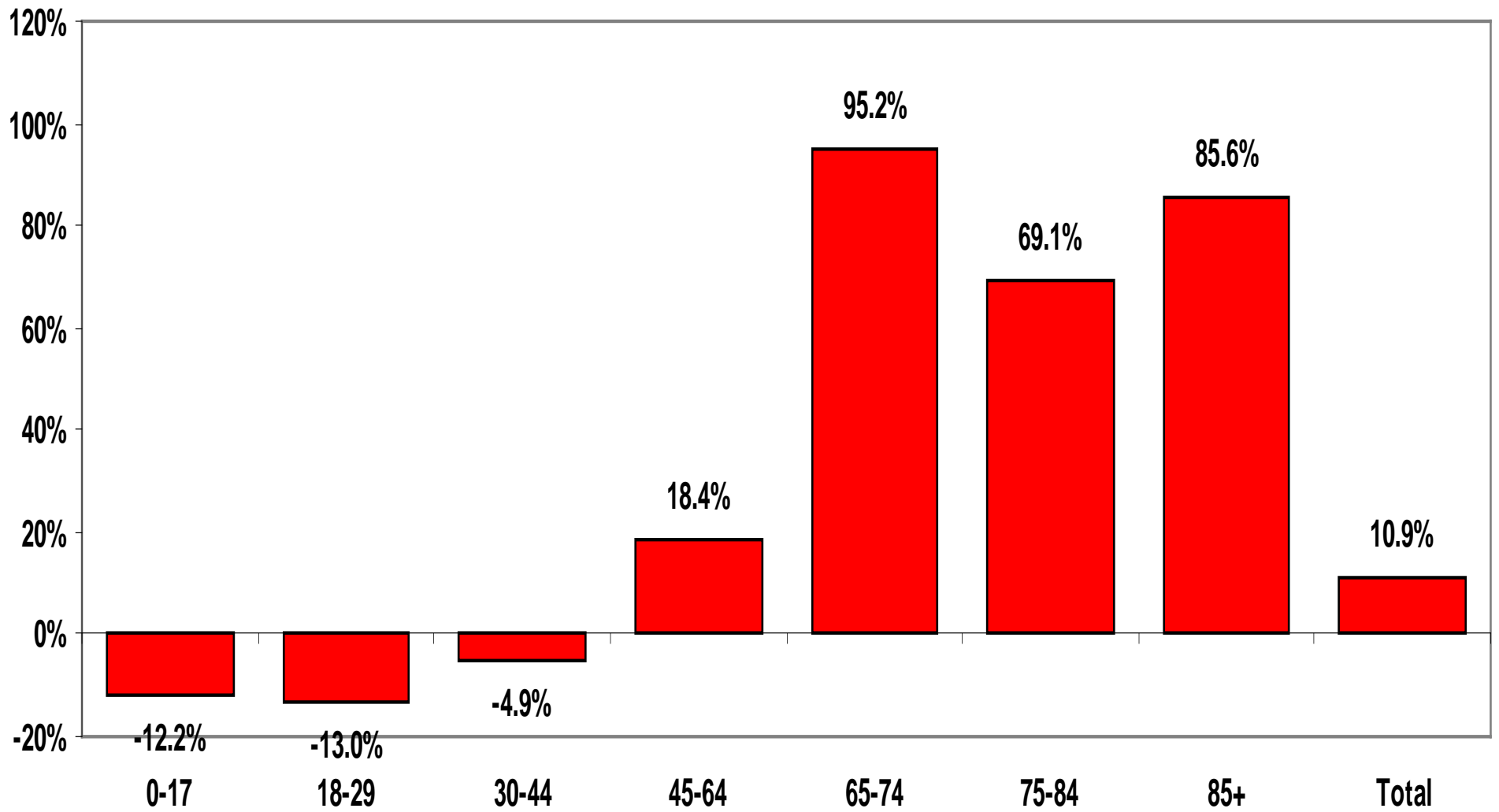
Maine Births; 1892-2004

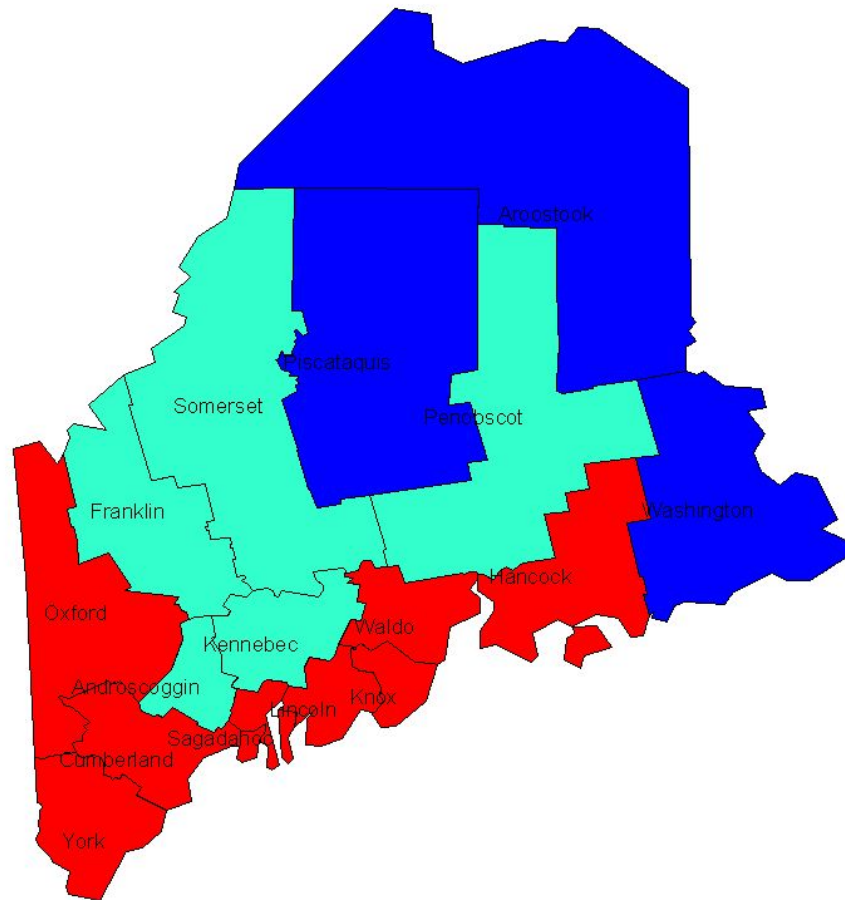


Maine Net US Migration

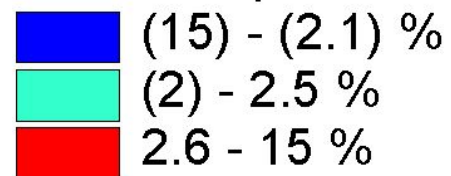


Population Change by Age Group Maine 2000 to 2025

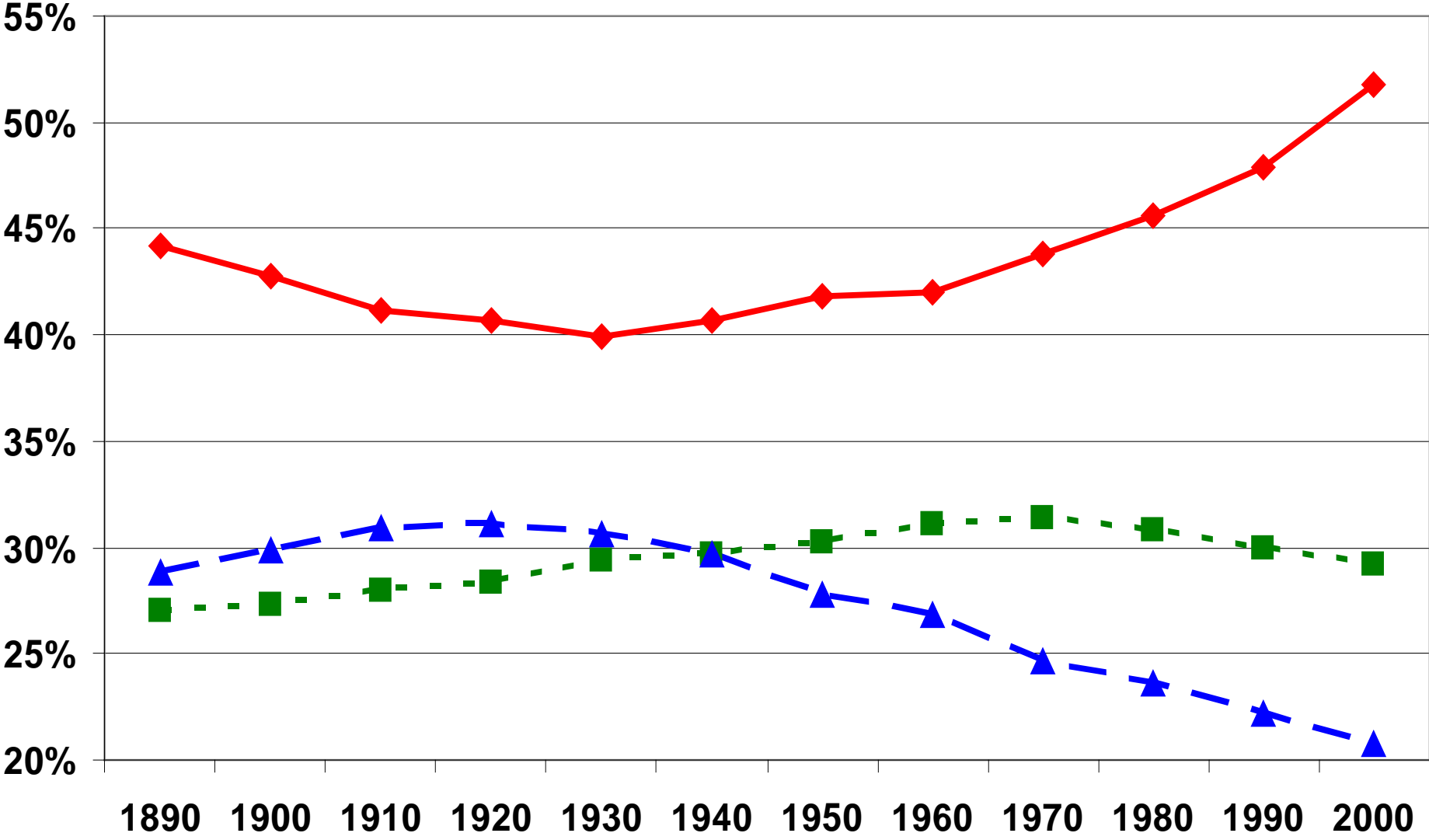




Rate of Population Change 1990 - 2000

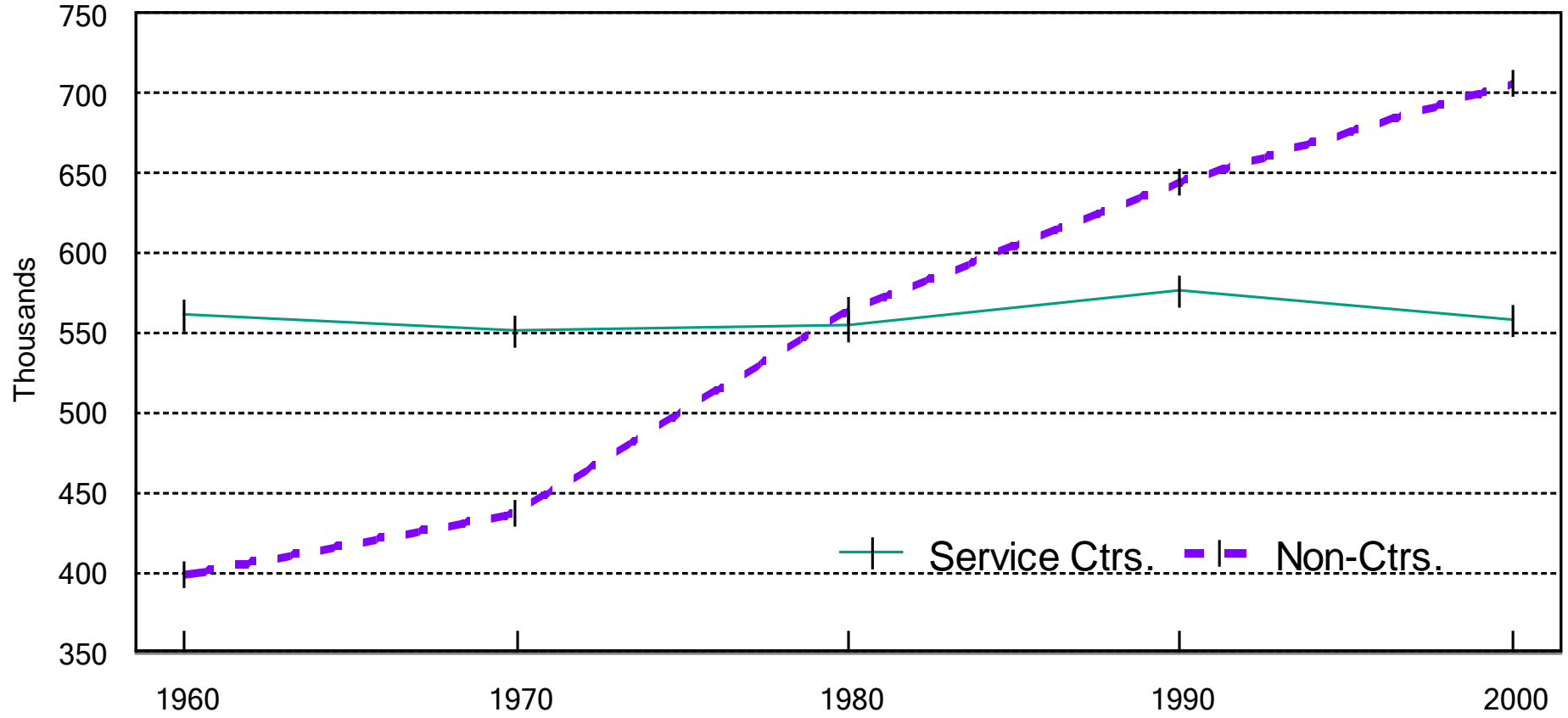


Population Distribution of Maine Regions

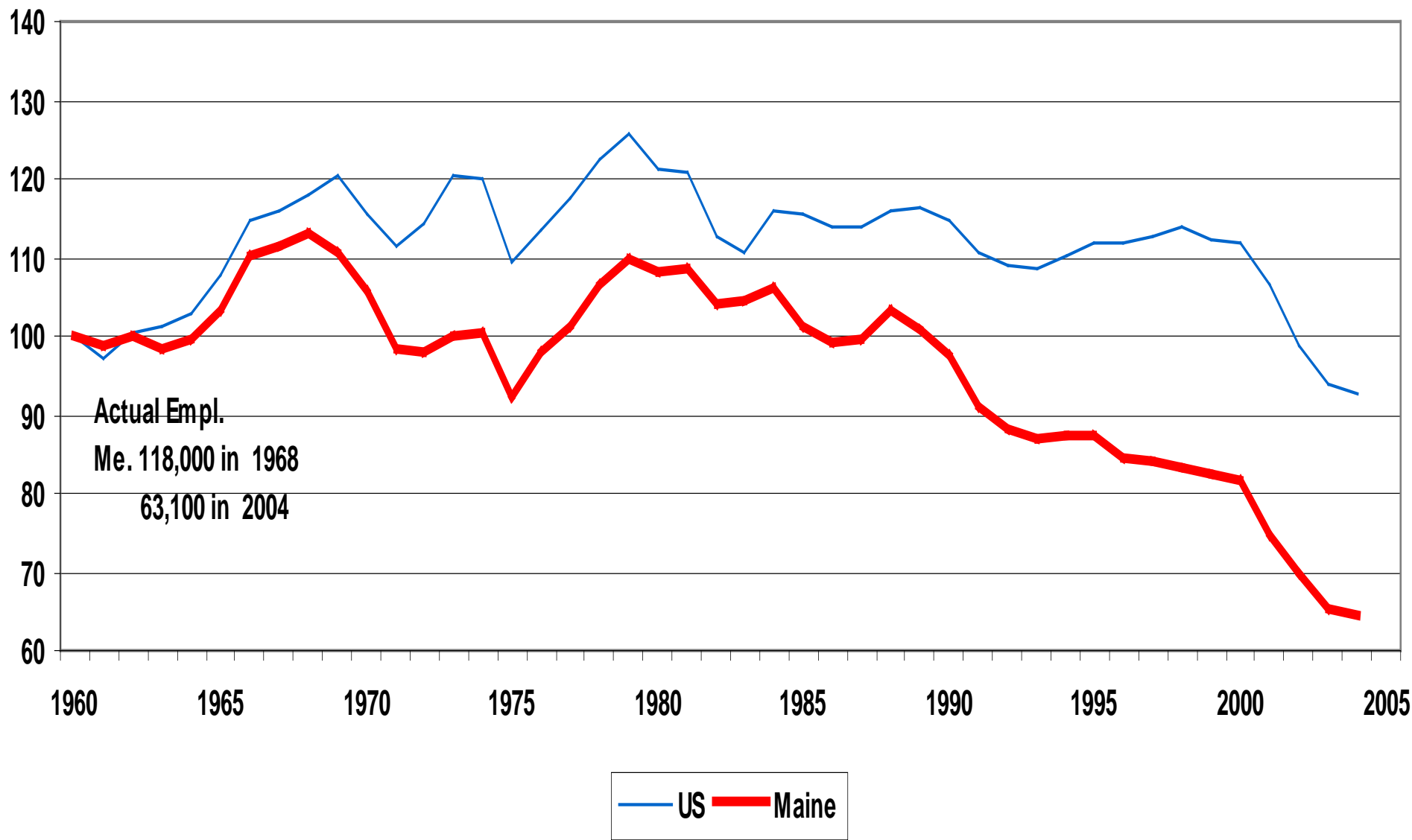


—◆— Coastal -■- Central -▲- Rim

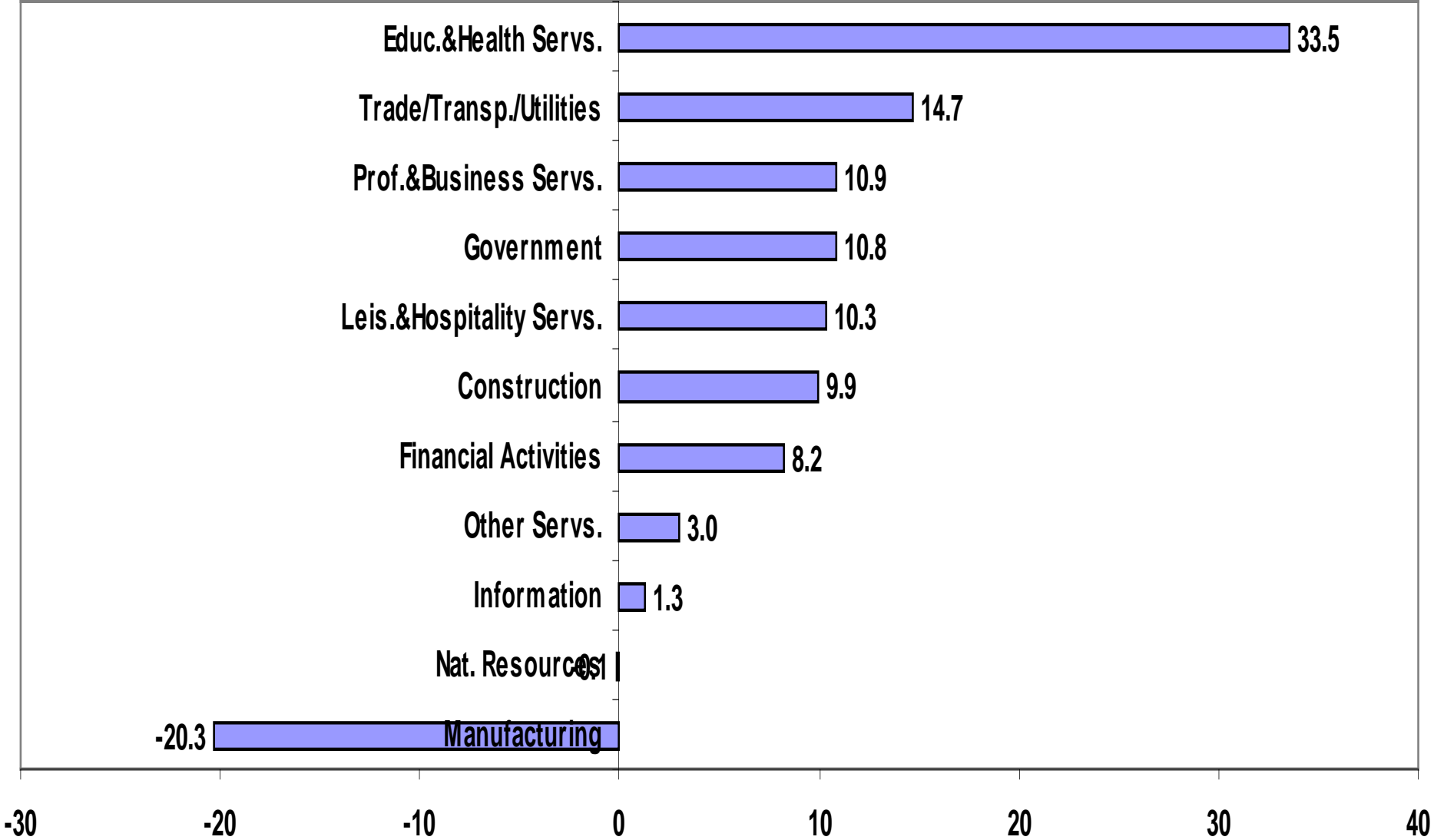
Maine Population; 1960-2000



Index of Maine & US Manufacturing Employment (1960=100)



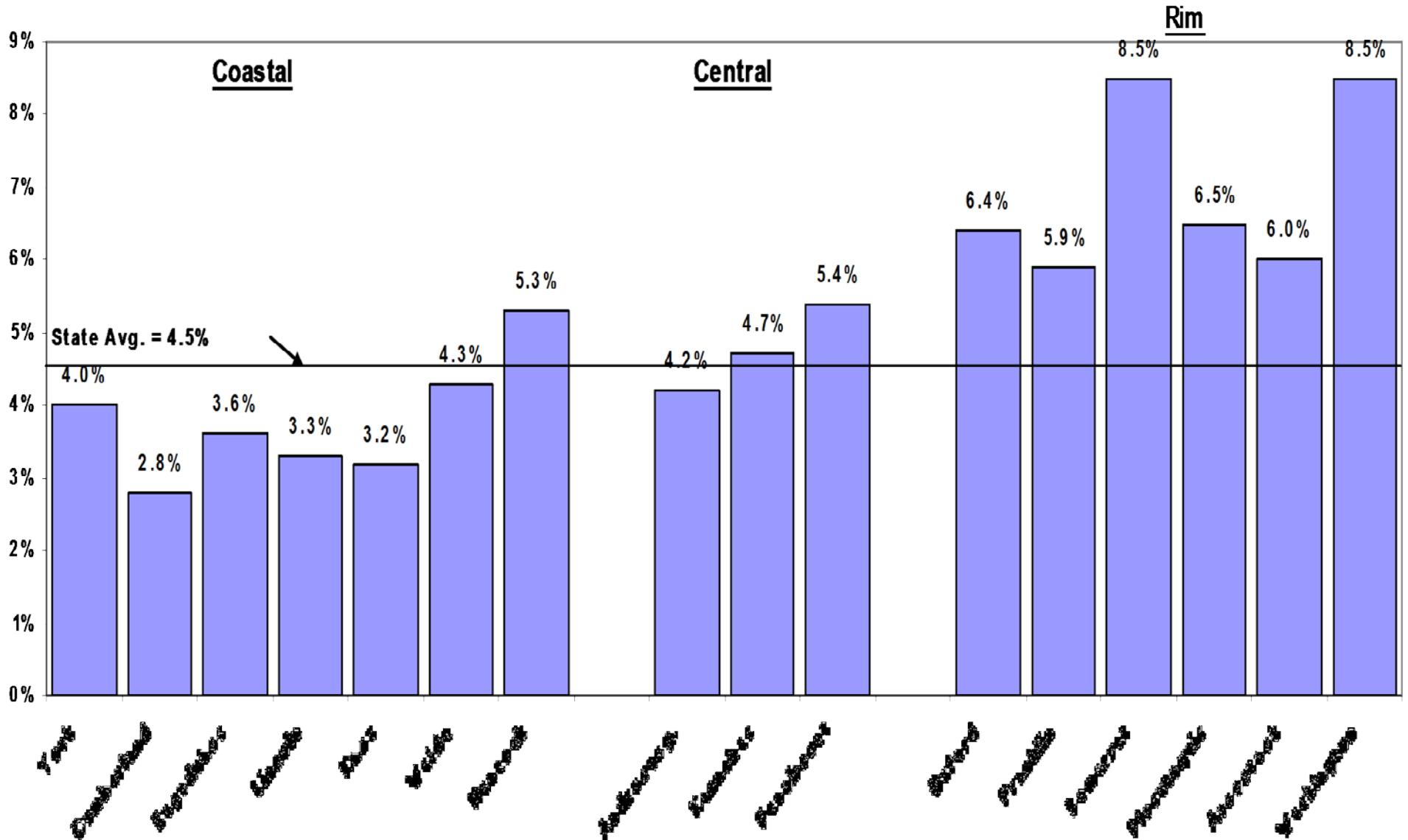
Maine Payroll Job Change 1994-2004 (1,000s)



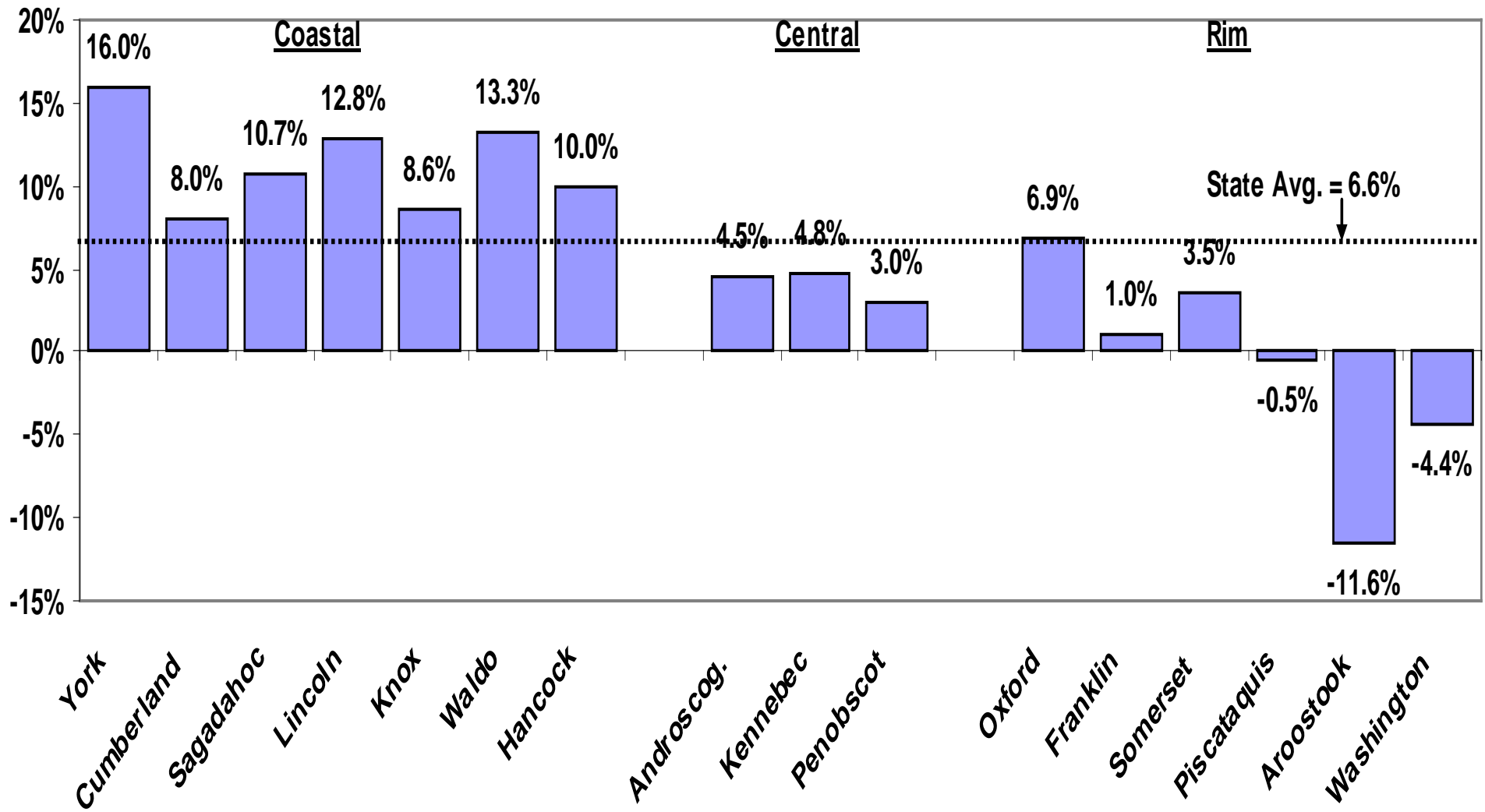
Employers in Waterville Micropolitan Area with 100 or More Employees, October to December, 2004

Rank	Employer	Town	Empl. Range	Description
1	MAINEGENERAL MEDICAL CTR AUGUSTA	WATERVILLE	1001-1200	General medical and surgical hospitals
2	L L BEAN INC	WATERVILLE	801-900	Mail-order houses
3	COLBY COLLEGE	WATERVILLE	601-700	Colleges and universities
4	WATERVILLE SCHOOL DEPT	WATERVILLE	401-450	Elementary and secondary schools
5	INLAND HOSPITAL	WATERVILLE	401-450	General medical and surgical hospitals
6	HUHTAMAKI PACKAGING	WATERVILLE	401-450	All other converted paper product mfg.
7	MESSALONSKEE HIGH SCHOOL ET AL	OAKLAND	301-350	Elementary and secondary schools
8	CARE & COMFORT	WATERVILLE	301-350	Home health care services
9	WAL MART ASSOCIATES INC	WATERVILLE	201-250	Discount department stores
10	MOUNT ST JOSEPH NURSING HOME	WATERVILLE	201-250	Nursing care facilities
11	COLBY COLLEGE FOOD SERVICE	WATERVILLE	151-200	Food service contractors
12	ASSISTANCE PLUS	WATERVILLE	151-200	Services for the elderly and disabled
13	REHABWORKS LLC	WATERVILLE	151-200	Offices of specialty therapists
14	SHAWS SUPERMARKETS INC	WATERVILLE	151-200	Supermarkets and other grocery stores
15	COMPUTER SCIENCES CORPORATION	WINSLOW	151-200	Computer facilities management services
16	BENTON ELEMENTARY SCHOOL	BENTON	101-150	Elementary and secondary schools
17	FORMTEK INC	CLINTON	101-150	Other metalworking machinery manufacturing
18	HANNAFORD BROS CO	WATERVILLE	101-150	Supermarkets and other grocery stores
19	HOME DEPOT USA INC	WATERVILLE	101-150	Home centers
20	OAK GROVE NURSING CARE CENTER	WATERVILLE	101-150	Nursing care facilities
21	HANNAFORD BROS CO	WATERVILLE	101-150	Supermarkets and other grocery stores
22	UNITED PARCEL SERVICE	WATERVILLE	101-150	Couriers
23	THOMAS COLLEGE	WATERVILLE	101-150	Colleges and universities
24	J C PENNEY CO INC	WATERVILLE	101-150	Department stores, except discount
25	HEALTH REACH NETWORK	WATERVILLE	101-150	Home health care services
26	MID STATE MACHINE PRODUCTS INC	WINSLOW	101-150	Machine shops
27	THULE TRAILERS INC	WINSLOW	101-150	Travel trailer and camper manufacturing

Unemployment Rates of Maine Counties - 2004



Population Growth by County 2003-2015
(SPO Forecast of 2005)



HISTORICAL GROWTH RANKINGS

Population Growth 1990 – 2000

Avg. Annual Rate (Maine = 0.4%)

1 York	1.3%
2 Lincoln	1.0%
3 Waldo	1.0%
4 Hancock	1.0%
5 Cumberland	0.9%
6 Knox	0.8%
7 Sagadahoc	0.5%
8 Oxford	0.4%
9 Somerset	0.2%
10 Franklin	0.1%
11 Kennebec	0.1%
12 Penobscot	-0.1%
13 Androscoggin	-0.2%
14 Washington	-0.4%
15 Piscataquis	-0.8%
16 Aroostook	-1.6%

Full & Part-Time Empl. Growth 1990-2000

Avg. Annual Rate (Maine = 1.2%)

1 Waldo	3.5%
2 Knox	2.7%
3 Lincoln	2.6%
4 Hancock	2.5%
5 Washington	1.8%
6 Cumberland	1.7%
7 Somerset	1.3%
8 Androscoggin	1.1%
9 York	1.1%
10 Oxford	1.0%
11 Penobscot	0.9%
12 Franklin	0.0%
13 Kennebec	0.3%
14 Piscataquis	0.2%
15 Sagadahoc	-0.6%
16 Aroostook	-0.7%

Taxable Ret. Sales Growth 1990-2000

Avg. Annual Rate (Maine = 4.5%)

1 Lincoln	5.9%
2 Waldo	5.9%
3 Hancock	5.5%
4 Cumberland	5.5%
5 York	5.4%
6 Knox	5.2%
7 Androscoggin	4.4%
8 Penobscot	4.3%
9 Kennebec	4.1%
10 Oxford	4.0%
11 Piscataquis	2.3%
12 Franklin	1.9%
13 Sagadahoc	1.4%
14 Aroostook	1.2%
15 Washington	1.2%
16 Somerset	0.8%

Personal Income Growth 1990-2000

Avg. Annual Rate (Maine = 4.2%)

1 Waldo	5.6%
2 Knox	5.1%
3 Cumberland	4.8%
4 York	4.7%
5 Hancock	4.6%
6 Lincoln	4.1%
7 Penobscot	3.9%
8 Oxford	3.9%
9 Washington	3.8%
10 Franklin	3.8%
11 Sagadahoc	3.7%
12 Somerset	3.7%
13 Androscoggin	3.6%
14 Kennebec	3.5%
15 Piscataquis	3.2%
16 Aroostook	2.1%

Per Capita Income Growth 1990-2000

Avg. Annual Rate (Maine = 3.8%)

1 Waldo	4.6%
2 Washington	4.3%
3 Knox	4.2%
4 Penobscot	4.1%
5 Piscataquis	4.0%
6 Cumberland	3.9%
7 Aroostook	3.8%
8 Androscoggin	3.8%
9 Franklin	3.7%
10 Hancock	3.7%
11 Oxford	3.5%
12 Somerset	3.5%
13 Kennebec	3.4%
14 York	3.3%
15 Sagadahoc	3.3%
16 Lincoln	3.1%

FORECAST GROWTH RANKINGS

Population Growth 2000 – 2010

Avg. Annual Rate (Maine = 0.5%)

1 York	1.0%
2 Hancock	0.9%
3 Waldo	0.8%
4 Lincoln	0.8%
5 Knox	0.7%
6 Cumberland	0.7%
7 Sagadahoc	0.5%
8 Oxford	0.3%
9 Franklin	0.3%
10 Somerset	0.2%
11 Kennebec	0.2%
12 Penobscot	0.1%
13 Androscoggin	-0.0%
14 Washington	-0.2%
15 Aroostook	-0.2%
16 Piscataquis	-0.5%

Full & Part-Time Empl. Growth 2000-2010

Avg. Annual Rate (Maine = 1.7%)

1 Lincoln	4.2%
2 Hancock	2.7%
3 Washington	2.4%
4 Cumberland	2.3%
5 Waldo	2.3%
6 Knox	2.2%
7 Somerset	1.7%
8 Kennebec	1.3%
9 Oxford	1.3%
10 York	1.2%
11 Penobscot	1.2%
12 Aroostook	1.1%
13 Franklin	1.0%
14 Androscoggin	0.9%
15 Piscataquis	0.4%
16 Sagadahoc	-1.4%

Taxable Ret. Sales Growth 2000-2010

Avg. Annual Rate (Maine = 5.0%)

1 Waldo	6.2%
2 Hancock	6.1%
3 Cumberland	6.1%
4 York	5.9%
5 Sagadahoc	5.9%
6 Lincoln	5.8%
7 Knox	5.7%
8 Oxford	5.0%
9 Kennebec	4.5%
10 Androscoggin	3.4%
11 Penobscot	3.3%
12 Franklin	2.5%
13 Washington	2.3%
14 Piscataquis	2.1%
15 Somerset	1.9%
16 Aroostook	1.8%

Personal Income Growth 2000-2010

Avg. Annual Rate (Maine = 4.9%)

1 Waldo	6.2%
2 Cumberland	6.1%
3 Hancock	6.1%
4 Knox	5.7%
5 Lincoln	5.6%
6 York	5.6%
7 Penobscot	5.1%
8 Sagadahoc	5.0%
9 Oxford	4.6%
10 Kennebec	4.3%
11 Franklin	3.9%
12 Somerset	3.8%
13 Piscataquis	3.5%
14 Aroostook	3.5%
15 Androscoggin	2.9%
16 Washington	2.9%

Per Capita Income Growth 2000-2010

Avg. Annual Rate (Maine = 4.4%)

1 Cumberland	5.3%
2 Waldo	5.3%
3 Hancock	5.1%
4 Penobscot	5.0%
5 Knox	4.9%
6 Lincoln	4.7%
7 York	4.6%
8 Sagadahoc	4.5%
9 Oxford	4.2%
10 Piscataquis	4.1%
11 Kennebec	4.1%
12 Aroostook	3.7%
13 Franklin	3.6%
14 Somerset	3.6%
15 Washington	3.0%
16 Androscoggin	3.0%