

Summertime in the Belgrades



... Serving the Central Maine Lakes & Kennebec River Corridor

— A Cider Mill Press Publication —

VOLUME 19, NUMBER 3

On the Stand: 25 Years Ago

by Esther J. Perne

Twenty-five years ago gas cost around a dollar, a Bush and a Clinton were campaigning for President and in the Belgrades a new publication appeared. It was billed as the weekly guide to the best of the Belgrade Lakes Region and its mission was to represent the wonderful positives and proactivity of this unique lake-rich area: the history, the livelihood, the outdoor lifestyle, the enrichment and the mystique of such a vast and diverse region.

"Other people dream of a Belgrade Lakes-style summer," the paper pointed out to readers. "You are living it. In a world where change is the norm, changes in the Belgrades never seem to alter the basic beauty, peacefulness and rusticity."

Twenty-five years ago, the region pulsed on small-time, small-town, small-news events just as it does today.

The Calendar of Events was filled with a schedule of summer theater productions, car shows, square dances, children's reading programs, fishing tournaments, canoe races, nature appreciation workshops, chicken barbeques, parades, public suppers, free concerts indoors and out, and, of course, mailboat rides on Great Pond.

- The gala of the summer - at the Village Inn - was the 15th birthday of the Belgrade Regional Health Center, located at that time in the former Belgrade Elementary School, for residents old and new to meet each other - besides in the waiting room.

- A door-to-door petition spearheaded by two customers convinced Skowhegan Savings Bank to



Continued on page 2

Mid-Maine Marine Inc.
885 Kennedy Memorial Drive, Oakland, ME 04963
1/2 Mile West of Exit 127 off I-95 • 1-800-649-2628
www.midmainmarine.com

HARRIS
IN STOCK
16, 18, 22, & 24 FT

PLAY FISH SKI RELAX

Join us...and help
protect our lakes!

Protect and Preserve

EST. B.L.A. 1908

Belgrade Lakes Association
137 Main Street, Belgrade Lakes, Maine 04918
207-512-5150 • www.belgradelakesassociation.org

Hamlin's Marine

290 West River Road, Waterville • 207-872-5660
581 Main Road North, Hampden • 207-907-4385
www.hamlinsmarine.com

YAMAHA



Continued from page 1

stay in town.

- The McGrath Pond/Salmon Lake Association was four years old and already holding winter and summer annual meetings, publishing a newsletter, distributing lake preservation literature, giving out trees and plants to replenish the shoreline.

- It was year three for the Snow Pond/Messalonskee Lake Association. Members were picking up their free spruce trees, taking home dye pills to put through their septic systems and thinking about the threat of phosphorus to their lake.

- A new dam was built at the end of Messalonskee Lake by Central Maine Power, involving the construction of a cofferdam to hold water back while the spillway was being repaired.

- Loon experts estimated there were 4,000 loons in Maine, 182 in Vermont, 20 in Massachusetts and 495 in New Hampshire. Massachusetts lost its loons to acid rain, Vermont to development as did New Hampshire with a low of 77 loons in 1978 until the state staged a campaign for man-made nesting islands.

- Children's Book Cellar, Railroad Square and Hamlin's Marine in Waterville, Mid-Maine Marine and Alden Camps in Oakland, and Day's Real Estate, Great Pond Marina in Belgrade Lakes and Hammond Lumber in Belgrade were advertisers - and still are.

- Exciting activities among the lakes included berry-picking, antiquing, fishing, attending public



suppers, water sports, shopping and a few hikes.

- The Belgrades were faced with an almost lack of public lands. Blueberry Hill, the boat launches, and two parcels of land in Rome (including French's Mountain) held by the Belgrade Region Conservation Alliance comprised almost the entire public or preserved lands.

- A GMC 1992 Extended Cab 4x4 cost \$16,752.

- The 100-year-old, five-story Cascade Woolen Mill in Oakland offered over 250 styles and colors of wool and wool blends in its outlet store.

- The 18th Annual Buttermilk Hill Music Festival was held on the Gawler Farm in Belgrade Lakes - for an old-time good old time.

- Mount Vernon celebrated its Bicentennial with a year's worth of fabulous activities, looked back on more thriving times and myriad changes and concluded the community remained essentially what it set out to be 200 years ago: a community distinct and unto itself.

- In real estate an unfinished cabin at Woodland Camps could be purchased for \$45,000, a 3-bedroom log home with 5+ acres for \$119,000 and a year-round, 2-bedroom house on Great Pond for \$139,000.

- Smithfield, age 152, had a population of 865, one store, one church, one garage, one fire station, one grange hall, one antique shop, one post office, one beach and one roller skating rink. There were 12 births, 5 deaths and 6 marriages during the previous year.

- Popular mailman (there had yet to be a

Continued on page 4...

Bear Spring Camps

Lakeside cabins on Great Pond in the heart of the
Belgrade Lakes Region

~Fishing ~Swimming~Tennis~Boat Rentals~ Sand beach~Home cooked meals~

www.bearspringcamps.com ~207.397.2341~60 Jamaica Point Rd, Rome, ME 04963

MICHAEL BREAUULT Creative solutions for all your Mac needs

Macintosh and iOS support, based in Western Maine, working onsite throughout Maine

If you have Macs, iOS devices, software or network problems, websites you'd like built, or any ideas you would like to implement using Macintosh computers, give me a call and we can discuss if I can help...

207-578-0226 • www.michaelbreault.net

Great family care, as unique as you are—how convenient.

With locations in Waterville, Oakland, North Anson, Unity and Madison, **we're right down the street** from where you work or live. And with personal attention for every patient, not to mention a direct connection to the world-class specialists of EMHS, it's no wonder more of your neighbors are turning to Inland Family Care.

Welcoming new patients today!
Call our Provider Finder Service at 800-914-1409
or email us at inlandproviderfinder@emhs.org.

Inland Family Care
A Department of Inland Hospital
EMHS MEMBER

inlandhospital.org
Offices in Waterville, Oakland, North Anson, Unity and Madison



Table of Contents

The Year Summertime Was Born.....1-2

Table of Contents..... 3

In the Moon’s Shadow..... 3

The Luckiest Boy: Play Ball..... 4

Take It Outside: Training Future Lake Stewards. 5

Directory of Great Visits: Get Out and Go..... 6-7

The Dams Keeper Report: Ponds Holding Up..... 7

Kennebec River Day New This Year..... 7

Calendar of Events: Dozens of Outings..... 8-9

The Kennebec Corridor Map9

Belgrades and Beyond Map.....10-11

Upcoming: Put These Outings on the Calendar..... 12

Cobbossee's Tadpole Patrol.....12

Conservation Too: Let's Get Blueberries 13

Accommodations: Stay For Awhile.....14

Notebook and News Everyone Can Use..... 14-15

Dining: Family-Friendly and Fun.....15

Business Directory: Goods, Services, More..... 16-17

Associations, Organizations, Groups.....17

North Pond President’s Letter..... 19

Real Estate Among the Lakes..... 19

Summertime in the Belgrades

--A Cider Mill Press Publication--
PO Box 290, Belgrade Lakes, ME 04918
Editor: Esther J. Perne, 207-495-3777 • ebelnews@earthlink.net
Advertising Director: Erle Morse, 207-495-3777 • ebelnews@earthlink.net
Layout Design: Michael Breault, 207-578-0226 • mo.breault@gmail.com
Webmaster : Gregor Smith • gregor@roadrunner.com
www.sumbelnews.com

This publication is copyrighted ©MMXVII, Cider Mill Press Publications, All Rights Reserved.

The Belgrade-Nebraska Total Eclipse Connection

To Benefit Friends of the Belgrade Library
A staged reading from the screenplay

In THE MOON’S SHADOW

Sunday
July 2, 2017
7-8:30 pm
Tickets \$10

Featuring lead actors Debra Lord Cooke and Elissa Piszal
Q&A with director Alvin Case
Followed by refreshments

Belgrade Community Center for All Seasons
1 Center Drive, Belgrade Lakes, Maine

Advance tickets available for purchase at the Belgrade Public Library and the evening of the presentation at the door.

On Sunday, July 2, 7-8:30 pm, there will be a reading at the Belgrade Center for All Seasons of the screenplay "In the Moon's Shadow" to benefit the Friends of the Belgrade Library.

The story, which will be filmed in Belgrade and in Nebraska, involves the lives of three people - a family who has lost touch with each other, their journey to Nebraska, the climactic total eclipse of the sun on August 21 and the hope that it will make them a family once again.

The one constant throughout the ages has been the celestial bodies moving in their predictable orbits and the moon circling the earth every 26.5 days, a predictability that is in contrast to the lives of humans which are unpredictable, chaotic and neglectful of relationships..

"In the Moon's Shadow" is a picture of family, ambition, love and the rare celestial event that changes their lives. It also will capture the spectators who will have journeyed great distances to see the eclipse and to interact with the actors.



CSS Cayer
Security Services, Inc.

COMMERCIAL & RESIDENTIAL
Burglary & Fire Alarm Systems
Video Surveillance & CCTV
Access Control
24 Hour UL Listed Monitoring Service

453-9177
www.cayersecurity.com

NORTH BAY ESTATES
ROUTE 8 • NORTH BELGRADE

~ **FOR SALE** ~

Custom Built Homes
by *Craig’s Carpentry*
1 & 2 acre lots
with lake views from
Great Pond overlook
Craig Alexander
cell (207) 649-3749 • crgsnbe@yahoo.com

ANNUAL RAFFLE
Buy a ticket and help protect our lakes!

Protect and Preserve

EST. **B.L.A.** 1908

Belgrade Lakes Association
137 Main Street, Belgrade Lakes, Maine 04918
207-512-5150 • www.belgradelakesassociation.org



—The Luckiest Boy—

YES, those were the words that we liked to hear. It didn't really matter if it was baseball or basketball, either way it meant fun and the excitement of either going to another school or having them visit us in Belgrade. Young people all over the world have a few things in common, and perhaps one of them is the elation felt when you and your team are about to partake in a competitive game. Certainly the rules vary and the goal may look different from here to elsewhere, but the nervous elation is the same. Every youngster that participates in a sport during his growing-up years can remember and recite some of the particular actions and scores that happened during their heyday! I thought it would be fun to tell you what The Luckiest Boy remembers about the baseball and basketball teams from Belgrade High School circa 1960s.

During the 60's decade, Belgrade High School had in the range of 60 to 100 students total (all 4 high school grades) in any given year. I graduated in 1965 in a class of 21 students and our class was the largest to that date due to what was known as the wave of "war babies", mostly the offspring of World War II veterans. With small numbers of students to pick from who had the desire and grades to play, fielding either a baseball or basketball team wasn't always an easy task for the coaches. Often the team might only have a few spare players other than those on the field or court. Both boys and girls teams were able to be put together, but up until 1960 or so the school had no gymnasium. Practices were spotty at borrowed gyms during odd hours, including Mr. Harold Alford's personal gym at his camp on Point Road. The ceiling was low and shooting was pretty much limited to lay ups. I remember going there to the unheated building a few times and seeing our breath due to low temps. Once our new gym was completed we became part of a league and had a regular schedule each year.

In that era the advent of school districts had not come into vogue. Most towns had their own schools and took in students who lived in smaller towns or rural areas. Schools in Maine were broken into 4 sizes: S for small, M for medium, L and LL for large and larger schools. We were a class S school and played other towns such as Liberty, Clinton, Kingfield, Albion,

Play Ball

by Rod Johnson

New Sharon, Phillips, Canton, Kingfield and several others. Each class had its own league complete with playoffs, state championships, etc. Often, Beals Island/Jonesport won the State of Maine Class S basketball championship with as few as 6 or 7 players in total on their squad. Wow, they sure could play ball. For away basketball games, boys and girls traveled together on a bus, often for long runs like Western Maine or the Maine coastal towns. Many of the girl players were also cheerleaders and did double duty. The long rides home were interesting to say the least. Our bus driver was Jamie Minot who was one of our best fans both at home and away games.

When spring came it was time for baseball and softball, sports that had a longer history at Belgrade High. Our fathers and even grandfathers could recite wins and scores from 20 to 40 years prior. Away games in the spring were especially fun, and unlike the bus trips with basketball, we were allowed to go in our own cars. Usually we took one or two of our own cars and the coach took his with a few players as well. My fondest memory of an away game was on a warm spring afternoon and 5 of us were riding to Albion in a 1958 Ford convertible with owner Barry Morrell at the wheel. With the top down, this was freedom personified as we screamed and yelled when the wind blew our hats off and tears of joy streamed down our faces. Home games were fun too, with parents and grandparents coming to watch. It was customary for them to sit in their cars up on the hill overlooking the ball diamond. When on occasion one of us hit a good one, the yells would come and the car horns blasted. How good does it get? Weren't we The Luckiest Boys?

Hats off to the boys and girls of the '65 Belgrade High School baseball and softball teams. Barry Morrell, Jimmy Stevens, Rick Johnson, Rod Johnson, Dave Berger, Dwight Cummings, Tom Endicott, Howdy Downing, Ray Hammond, Dave Sprague, Mark Isbister, Richard Nickless, Donny Hammond, Gary Sirois, Rodney Cook, Gerry Barber, Jeff Wyman, Steve Jenny and Ray Barker and Coach Doug Look

Here's to the ladies: Mary Damren, Dale Sprague, Sally Strickland, Brenda Hatt, Linda Blaisdell, Alice Beaulieu, Elaine Edgecomb, Rebecca Salisbury, Sally Cook, Linda Sawyer, Penny Wing, Arlette Douglas and Jane Wyman. Coach not listed but think Vernal Finemore, BHS Principal

It's hard to believe that was 52 years ago. It sure would be nice to have another ride in the '58 Ford convert.



...Continued from page 2



Experience the Legend



New England's only
distiller of Absinthe

Maine's Best Spirit, 2016
—Down East Magazine

152 Fairfield Street, Oakland, ME 04963
www.treespiritsofmaine.com



woman), Dave Webster, offered passengers "the best sightseeing opportunity in the Belgrades." He also delivered messages to remote lakedwellers, once saved a drowning child at one of his stops, successfully headed off a runaway speedboat and hosted a wedding (also successful) ceremony on the boat.

- The 84-year-old Sidney Fair, the only agricultural fair in the Belgrade area offered horse, oxen and pony pulling, dozens of concessions and an antique midway.

- People were just starting to ask, wouldn't it be nice if the next generation and the one after that and indeed the ones beyond could enjoy the lakes and the land the way they were?

- Because they did ask and because they joined forces, preserved land, monitored water quality, and advocated remediation the Belgrades continue to offer the basic beauty, peacefulness and rusticity that other people only dream and those who work, play, visit and vacation here continue to live.





— Take It Outside —

Although according to the calendar summer has barely begun, it is already flying by with lots going on. Most of our snowbird summer residents are back already and increasing numbers of out of town visitors are appearing. Every day it is harder to find a parking spot in the village. As schools are getting out, more and more young faces are appearing throughout the watershed. This week began with a weekend visit from an old friend followed by a multi-day trip to western Maine with a couple of short hikes and fishing trips in between.

My friend, Steve Jurmu, whom I have known since he was born six months after I was, came for a visit. Steve's mother was my mother's best friend and growing up, we spent our summers together on the shores Lake Michigan in Escanaba, Michigan, a small Upper Peninsula town that has much in common with Belgrade Lakes. As kids, we spent nearly every day fishing, swimming, sailing, water skiing, and going on hikes. During his visit we became kids again, and tried to cram as many of those activities as possible into a couple of days. We relived many old memories and created new ones. I look forward to our next chance to get together.

The weather has continued to be inconsistent, sometimes warm, sometimes cool and windy, sometimes wet, sometimes dry. The

Continued on page 13...

Training Future Lake Stewards

by Pete Kallin



The Mountain Kennel Club: Lynn Matson, Barbara, Allen, Harriet Perez, Shelley Fitzgerald along with Sydney, Cody, Roxy, Lexi, and Juneau.



Doing a plankton tow from the Melinda Ann on Kezar Lake with MSAD 72 students

FOR SALE
HOANG
REALTY
623-0623



Amy Gray:
478-8921



Dave Barnard:
441-8486



Erica O'Connor:
485-0277



Hoa Hoang:
485-1485



George O'Connor:
458-1674



Gail Dostie:
242-2017



Heidi Witham:
465-5764



BELGRADE

Sandy Beach with gorgeous views and lovely sunsets. 2 miles of open view across the lake. Private boat launch with 90 ft of waterfront with docking system and boat lift for a 21 ft. aluminum boat. Accessible during all seasons. Just under an acre on the lake with an additional +/- 4 acres from the waterfront lot. 4 bay garage with storage. Please note the additional 2,390 square ft. to be finished by Buyer. MLS#: 1217329 \$1,400,000



BELGRADE

EXTRAORDINARY CUSTOM BUILT HOME WITH 10 PLUS ACRES! 4 bedrooms, grand foyer, spacious living room with fireplace & built-ins, formal dining, stylish designed eat-in kitchen, large deck off the kitchen & living room and 2 car garage. Gorgeous landscaped yard with rock walls. Association includes a clubhouse on Great Pond, mooring for a boat, tennis courts, sandy beach for swimming and fishing! MLS#: 1302196 \$595,000



BELGRADE

Year round living with sunsets and 205 feet of waterfront on Great Pond! This waterfront home features 11 rooms, 3 bdrm, 2 full baths, walkout basement, 3 season screened porch, deck and attached 2 car garage. 3.15 acres on sub dividable lot. Close to Belgrade Lakes Village. Be sure to view the 3D Matterport Virtual Tour. MLS#: 1305616 \$494,900



BELGRADE

Prime open lot with 1200ft of road frontage on Route 27/Augusta Rd in Belgrade. 26x40ft garage with one 10x12ft and one 7x9ft garage door, 12ft 6in ceilings, fully equipped auto-body shop with 2 post hydraulic lift, tire machine, tire balancer, overhead air lines. Efficient, comfortable workshop w/forced hot air furnace, electric hot H2O heater, and full bath (private well, septic on site). Additional 50 amp service designed for camper hookup. MLS#: 1292690 \$182,900



BELGRADE

Here's your chance to own the adorable "Sugar Shack!" Built with heavy timber construction, gas stone fireplace, unique kitchen design and open concept in a very private setting. Deeded access to Great Pond Stream leading out to Great Pond. Dock is already in place-2012, 18 foot pontoon boat available to purchase for \$10,000. Walking distance to the village and all it's amenities. MLS#: 1301369 \$175,000



BELGRADE

Two bedrooms, one bath, five bay garage, large kitchen and dining area, large living room, huge leveled background with privacy. Close to Oakland, Waterville, Belgrade and Augusta.

MLS#: 1298757 \$130,000



BELGRADE

Property is located on a private, year round, maintained road. There is a common well and shared beach area available to owners. Close to golf course, schools, community center, and Belgrade Lakes Village. Wooded lot allows a new home to maintain privacy. MLS#: 1145264 \$49,900



BELGRADE

OWNERS SAY TO BRING OFFERS - COME TAKE A LOOK! Beautiful level 9 acre building lot in the country with approximately 4 acres of field and 5 wooded acres in the rear. Great spot if you have a horse or two. This lot is close to shopping, the new hospital and all of the lakes and ponds in the Belgrade Lakes area. Soils tested. Take a walk on the lot to discover how it would feel living in your dream home on this country lot. MLS#: 1292228 \$48,500



BELGRADE

Lovely, open, level, lot ready for your building design. Surveyed boundary lines and preliminary soils investigation completed. Rural quiet location, but close to shopping, and an easy commute to I-95. Great sun exposure. MLS#: 1312289 \$19,500



SMITHFIELD

16+ acres, 4 bedrooms, 4 baths, 3 car garage, privacy, guest cottage, finished basement, 920 ft of East Pond waterfront, sun room/solarium, huge deck, gigantic barn, automatic generator, underground power, lower property taxes, master bedroom w/ bath, walk-in closet, close to I-95, Colby College, hospitals, stunning stone fireplace, granite counter tops, daylight basement, move in ready, 4,380 sq ft, You've made it w/this "Paradise on Earth" home. MLS#: 1300717 \$850,000



ROME

Fabulous sunsets from this camp on 200 feet of frontage on Long Pond. Year round 1 bedroom cottage with a 1 bedroom guest quarters with it's own bath! New leach field in 2015, new expansive dock and well. Come make this inexpensive year round home yours! MLS#: 1301949 \$259,900



FAYETTE

Deeded access to association beach and boat launch on Lovejoy Pond.

MLS#: 1110898 \$11,000



Karen Ramsay:
441-8186



Lisa Hicks:
592-5374



Loretta Burk:
458-0910



Merline Douglas:
485-0138



Pam Armour:
314-7445



Patrice Lessard:
314-7976



Remy Henry:
242-0450



Sarah Allarie:
242-9842



Tanja McCarthy:
660-5427

www.hoangrealty.com • 31 WESTERN AVENUE • AUGUSTA, MAINE 04330 • 623-0623



Calendar Directory

TOWN BY TOWN...

GREAT VISITS, AWESOME OUTINGS – ART, MUSIC, CULTURE, HISTORY, RECREATION, FARMERS' MARKETS, TRAILS, SCENIC SITES, AND MORE...

AUGUSTA

- **Viles Arboretum**, 224 acres with 6 miles of year round walking trails, including art and sculpture trail, open dawn to dusk, Visitor Center open Monday-Friday, 9 am-4 pm, admission free, 626-7989, www.vilesarboretum.org, 153 Hospital Street
- **Farmers' Market at the Arboretum**, indoors, Friday 1-5 pm
- **Art in the Capitol**, Maine Arts Commission monthly self-guided exhibits in State House hallways (Mon-Fri 8 am-5 pm), Blaine House (call for times), and Maine Arts Commission Office (8:30am-4:30 pm), 287-6746, mainearts.maine.gov
- **Children's Discovery Museum**, CDM, hands-on displays, activities, Tuesday-Thursday 10 am-4 pm, Friday-Saturday 10 am-5 pm, Sunday 11 am-4 pm, admission, 622-2209, www.childrensdiscoverymuseum.org, 171 Capitol Street
- **Danforth Gallery**, Jewett Hall, art exhibits, UMA-1234, www.uma.edu
- **Governor's Mansion**, 1830 Blaine House, Tuesday-Thursday 2-4 pm, 287-2121, www.blainehouse.org, State Street
- **Holocaust and Human Rights Center of Maine**, Michael Klahr Center, Monday-Friday 8 am-4 pm, 621-3530, www.hhrc.uma.edu, University of Maine at Augusta, off Route 27
- **Kennebec Historical Society**, Wednesday-Friday 10 am-2 pm, 622-7718, www.kennebechistorical.org, 107 Winthrop Street
- **Maine State Museum**, Tuesday-Friday 9 am-5 pm, Saturday 10 am-4 pm, \$2 adults, \$1 ages 6-18, 287-2301, www.mainestatemuseum.org
- **Maine State House**, Hall of Flags, House and Senate Rooms, Klir Beck dioramas, Monday-Friday 8 am-5 pm, book tours at Maine State Museum, walk-ins welcome 9 am-1 pm, 287-5600, www.maine.gov, State Street
- **Maine State Library**, Monday-Saturday opens 9 am, 287-5600, www.maine.gov/msl/, State Street
- **Museum in the Streets**, walking/history tour, www.augusta-maine.gov, Water Street/downtown.
- **Old Fort Western**, 1754 fort, house, store, 1-4 pm daily, admission \$6, 4-14 years \$4, 626-2385, www.oldfortwestern.org, Cony Street
- **Riverfront Park**, boat launch, Greenway Trail, playground, eastside Kennebec River
- **Kennebec River Rail Trailhead**, Maine State Housing Authority parking lot, 623-8162, www.krrt.org, Water Street
- **University of Maine at Augusta Fitness Trail**, 2 miles of wooded trails, near Civic Center, Route 27
- **Farmers' Market at Mill Park**, Tuesday 2-6 pm, 626-2305, www.farmersmarketmillpark.org/, North Water Street
- **Farmers' Market at Turnpike Mall**, 549-5112, Wednesday and Saturday 10 am-1 pm, Western Avenue

BELGRADE LAKES

- **Belgrade Lakes Market**, 320-8303, careybor@yahoo.com, Sunday 8 am-1 pm, Main Street
- **Great Pond Mailboat**, 592-1537, Monday-Saturday 10 am,

Post Office, Main St.

- **The Belgrade Community Center for All Seasons**, pool and lakefront, gym, playground, picnic area, rec programs, 495-3481, www.belgrademaine.com, 1 Center Drive
- **Union Church Coffee House**, check for schedule, 7:30 pm, \$5, 495-3599, www.unionchurchmaine.org, Main Street
- **Belgrade Historical Society**, 495-2973, belgradehistoricalsociety.org
- **Belgrade Lakes Market**, Sun 8 am-1 pm, Main Street
- **Peninsula Park on Long Pond**, picnic tables, Main Street
- **Maine Lakes Resource Center**, 512-5150, www.maineakesresourcecenter.org, 137 Main Street

FAIRFIELD

- **Fairfield Historical Society**, 1890 Cotton-Smith History House, every Tuesday 9 am-12 noon and 1-4 pm and second Saturday of month, 453-2998, www.fairfieldmehistoricalociety.net, 42 High Street
- **Farmers' Market**, 948-5724, Wednesday 2-6 pm, Saturday 9:30 am-1:30 pm, Nazarene Church parking lot, 81 Main Street

FARMINGTON

- **Farmington Historical Society, Titcomb House Museum**, 778-4275, Wednesday and Saturday, 11 am-2 pm, July-August, www.farmingtonhistory.org, 118 Academy Street
- **Nordica Homestead Museum**, opera singer Lillian Nordica costumes, jewelry, mementos, 778-2042, Tuesday-Saturday 10 am-12 noon and 1-5 pm, Sunday 1-5 pm, www.lillianordica.com, 116 Nordica Lane, Holley Road
- **Contra Dance**, 491-9928, www.starleft.org 2nd Saturday of the month, all welcome, 6:30-7:30 pm family dance, 8-11 pm regular dance, admission, Grange Hall, Bridge Street, Route 43, West Farmington
- **University of Maine campus and Arboretum**, four walking tours with informal guide pamphlet to campus trees, 581-1541, www.umaine.edu/arboretum/, downtown
- **Farmers' Market**, 778-6602, Friday 9 am-2 pm, Better Living Center parking lot, Front Street; Saturday 8 am-12 noon, Main Street
- **Meetinghouse Park and Gazebo**, weekly concerts throughout summer, downtown
- **Fairgrounds**, events throughout summer, Franklin County Fair in September, High Street

GARDINER

- **Artdogs and Circling the Square Fine Art Press**, Friday 1-5 pm, Saturday 10 am-4 pm, 582-6600, www.theartdogs.com, 275-277 Water Street
- **Johnson Hall Performing Arts Center**, 582-7144, www.johnsonhall.org 280 Water Street
- **Monkitree**, art exhibits, 512-4679, www.monkitree.com, Tuesday-Friday 10 am-6 pm, Saturday 12-6 pm, 263 Water Street
- **SpinOff Studio**, 588-7297, spinoffstudio.org, Monday-Friday 8:30 am-4:30 pm, 405 Water Street
- **Farmers' Market**, 512-8022, www.gardinerfarmersmarket.org, Wednesday 2-6 pm, rain or shine, The Common
- **Kennebec River Rail Trail**, 623-8162, www.krrt.org, access near Gardiner/Randolph Bridge, 6.5 miles to Augusta
- **Waterfront Park**, picnicking, events throughout summer, Kennebec River

GREENE

- **Araxine Wilkins Sawyer Memorial**, free entertainment programs, monthly - Friday 2 and 7 pm, 946-5311, www.sawyer-foundation.com, 371 Sawyer Road, off Route 202

HALLOWELL

- **Harlow Gallery**, Kennebec Valley Art Association, 622-3813, www.harlowgallery.org Wed- Sat, 12-6 pm, 160 Water Street
- **Gaslight Theater**, 626-3698, www.gaslighttheater.org City Hall, 1 Winthrop Street
- **Museum in the Streets**, history/walking tour, www.historichallowell.org, downtown
- **Farmers' Market**, 622-1350, Sun 3-6 pm, Water Street
- **Vaughn Woods and Homestead**, 166 acre park/trails/homestead, Middle Street
- **Kennebec River Rail Trail**, www.krrt.org, to Augusta, Farmingdale/Gardiner, Water Street
- **Waterfront Park**, deck/walkway on Kennebec River, North Water Street

HINCKLEY

- **L.C. Bates Museum at Good Will-Hinckley School**, early 20th century natural history and cultural exhibits, nature trails and camps, adults \$3, up to 17 years \$1, 238-4250, www.gwh.org Wednesday-Saturday 10 am-4:30 pm, Sunday 1-4:30 pm, Route 201

KINGFIELD

- **Ski Museum of Maine**, 265-2023, www.skimusuemofmaine.org, 256 Main Street
- **Stanley Museum**, 265-2729, www.stanleymuseum.org, memorabilia/displays on photographs, violins and Stanley Steamers, Tuesday-Sunday 1-4 pm, 40 School Street

LIVERMORE

- **Washburn-Norlands Living History Center**, 18th-19th century mansion/farmstead/schoolhouse, library, chapel, 897-4366, www.norlands.org, admission, living history tours Tuesday and Thursday 1-4 pm, 290 Norlands Road

MADISON

- **Lakewood Theater**, Maine's Summer Theater, Young Performers Camp, 474-7176, www.lakewoodtheater.org, Route 201
- **Skowhegan School of Painting and Sculpture**, 474-9345, www.skowheganart.org, summer evening artists lecture series, East Madison Road

MONMOUTH

- **Monmouth Museum**, local and regional Maine history, Wednesday-Sunday 1-4 pm, 933-2287, www.monmouthmuseum-minc.org, 751 Main Street
- **The Theater At Monmouth**, The Shakespeare Theater of Maine, Cumston Hall, 933-9999, www.theateratmonmouth.org, Main Street

MOUNT VERNON

- **D.E.W Animal Kingdom**, Zoo, 293-2837, 918 Pond Rd, Route 41

NEW PORTLAND

- **Nowetah's American Indian Museum and Craft Shop**, 628-4981, www.nowetahs.webs.com/, daily 10 am-5 pm, free,



Elliot B. Thayer, PLS, PE
Andrew Dunbar, PLS, LPF, LSE
RESIDENTIAL & COMMERCIAL
SITE DESIGN
STATE & LOCAL
PERMIT APPLICATIONS
PREPARED & PRESENTED
17 Hasson Street
Farmingdale, ME 04344
582-7762
www.thayereng.com



MOSQUITO BANDITOS
207-613-5656

Protect your children and pets from:

Zika, West Nile Virus, Encephalitis, Heart Worms
Anaplasmosis, Lyme Disease, Powassan Virus

ENVIRO FRIENDLY TICK, BLACK FLY & MOSQUITO CONTROL
www.mosquitobanditos-maine.com

PAUL HANNA'S PLUMBING



207-495-3805

New Homes and Remodels ~ Camps
Water and Sewer Pumps ~ Water Filtration
Paul Hanna, Licensed Master Plumber



628-4981, 2 Colegrove Road, Route 27
• **Wire Bridge**, 1864, probably only wire suspension bridge in U.S., off Route 27

NEW SHARON

- **Farmers’ Market**, Saturday 9 am-1 pm, Douin’s Market, 491-9025, 150 Mercer Road, Routes 2/27
- **New Sharon Historical Society**, Saturday 1-3, 778-4167, Routes 2/27

NORRIDGEWOCK

- **Norridgewock Historical Society Museum**, 1838 building, Saturday 10 am-1 pm, 634-5032, www.norridgewockmuseum.com, Mercer Road, Route 2
- **Oosoola Park**, picnic area, great playground, boat launch, on Kennebec River, Route 8

OAKLAND

- **Macartney House Museum, Oakland Area Historical Society**, 465-7549, Wednesday 1:30-4:30 pm, 1815 home with antique furnishings and Oakland artifacts, 25 Main Street
- **Town Parks**, playground, picnic tables, swimming area, boat launch area, Belgrade Road on Lake Messalonskee and McGrath Pond Road on McGrath Lake
- **Farmer’s Market**, Friday 2-6 pm, 465-3094, Pine Acres Parking Lot, 895 Kennedy Memorial Drive

READFIELD

- **Readfield Historical Society and Museum** in 1853 school-house, 685-4662, www.readfieldhistorical.org, Thursday and Saturday 10 am-2 pm or by appointment, Route 17, Readfield Depot

ROME

- **Mt. Philip Grange**, suppers 3rd Sat of month, 4:30-6 pm, all you can eat beans, cornbread, rolls, chop suey, pies, Routes 135/225
- **Trails**: Mount Philip, Route 225; The Mountain, Route 27; French's Mountain and Kennebec Highlands, Watson Pond Road; for information call 495-6039 or visit www.belgradelakes.org; maps available at BRCA, 137 Main Street, Belgrade Lakes

SIDNEY

- **New England Music Camp**, concerts free and open to the public, Bowl-in-the-Pines on Lake Messalonskee, 465-3025, www.nemusiccamp.com, 8 Goldenrod Lane, Route 23
- **Sidney Historical Society**, 724-8032, www.sidneyhistoricalociety.org, 2986 Middle Road
- **Silver Spur Riding Club**, horse shows, River Road, Route 104

SKOWHEGAN

- **Margaret Chase Smith Library**, residence, home, museum exhibits, 474-7133, www.mcslibrary.org, free, Monday-Friday, 10 am-4 pm, 54 Norridgewock Ave.
- **History House Museum**, 1800s local history and culture, heirloom gardens, free, Tuesday-Saturday, 10 am-4 pm, 474-6632, www.skowheganhistoryhouse.org, 66 Elm Street
- **Fairgrounds**, weekly horse shows/competitions, free public events, covered arena, Skowhegan State Fair in August, 474-3621, Madison Avenue, Route 201
- **Farmers’ Market**, Wednesday 3-6 pm, Saturday 9 am-1 pm,

weekly entertainment, 938-3906, Somerset Gristmill parking lot, downtown

SMITHFIELD

- **Fairview Grange**, 362-2791, Route 8
- **Smithfield History Society “The Groves House,”** 634-4392, 21 Lakeview Drive
- **Sunbeam Roller Rink**, 362-4951, 830 Village Rd, Route 8
- **Sunset Camps**, public beach, 362-2611, www.sunsetcamps.com, 834 Village Road, Route 8

UNITY

- **Unity College Centre for the Performing Arts**, folk genre music, 568-3147, www.unitymaine.org, 42 Depot Street

WATERVILLE

- **Aqua City Actor's Theatre (ACAT)**, 873-7000, www.acattheatre.org. Waterville Opera House Studio Theater, Main Street
- **Museum in the Streets**, downtown history/walking tour, www.themuseuminthestreets.com/waterville.htm
- **Head of Falls Park/Two Cent Bridge**, historic foot bridge over Kennebec River connecting Waterville and Winslow, Front Street
- **Common Street Arts**, 872-2787, www.commonstreetarts.org, Wednesday-Saturday 12-6 pm, 16 Common Street
- **Colby College Museum of Art**, 859-5600, www.colby.edu/museum/ Tuesday-Saturday 10 am-5 pm, Sunday 12-5 pm, free admission, Colby College Campus, Mayflower Hill
- **Colby College Special Collections**, Miller Library, Monday-Friday 10 am-12 noon and 1-4 pm, free admission
- **Thomas College Art Gallery**, 180 West River Road
- **Waterville Historical Society and Redington Museum**, 1814 home and pharmacy, 872-9439, www.redingtonmuseum.org. Tuesday-Saturday tours at 10 and 11 am, 1 and 2 pm, 62 Silver Street
- **Waterville Opera House**, 873-7000, www.operahouse.com, 93 Main Street
- **Farmers’ Market**, Thursday 2-6 pm, 680-2055, www.watervillefarmersmarket.org,

WAYNE

- **Farmers' Market**, 685-4657, <http://waynefarmersmarket.weebly.com>, Saturday 9 am-noon, Town Green, at the Mill Pond, Main Street

WILTON

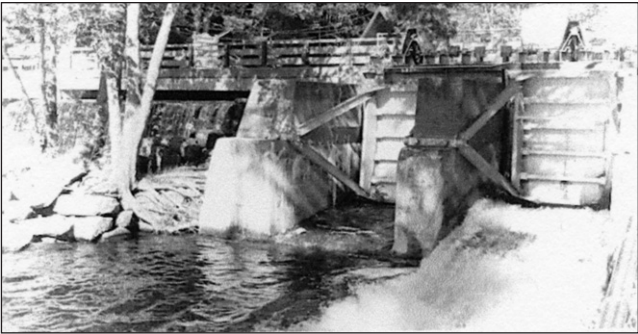
- **Wilton Farm & Home Museum**, 645-2091, 645-4578, www.thewiltonfarmandhomemuseum.org, Saturday 1-4 pm or by appointment, 10 Canal Street

WINSLOW

- **Fort Halifax on the Kennebec River**, historic fort tower, park, Route 201

WINTHROP

- **Norcross Park**, playground, picnic site, boat launch on Maranacook Lake
- **Farmers’ Market**, 446-2899, Tuesday and Saturday 9 am-1 pm, town office parking lot, 17 Highland Avenue



The Dams Keeper Report

As of this writing, all of our Ponds are holding their own and fall within our 3” or so above full pond objectives. The forecasters are still predicting a dryer and slightly warmer summer – just like last summer! (<http://longrangeweather.com/weather%2Dforecasts/US-City.aspx>) In other words, another beautiful summer in the Belgrades!

Great Pond is currently 2.16” above full pond with Gate 1 opened just 9”. Long Pond at the Wings Mill dam, as well as upper Long Pond nine miles to the North, is currently at 3.48” above full with both Wings Mill gates completely closed. Due to our forecast, we are once again trying to hold the water level reserves as long as we can. So far, so good!

Enjoy this beautiful summer, weather and your vacation!



Dick

Dick Greenan
Secretary, Belgrade Lakes Watershed Dams Committee

Kennebec River Day: Highlight of Whatever

New this year as part of the Whatever Family Festival, the Kennebec Valley Chamber of Commerce is introducing Kennebec River Day, Saturday, June 24, 11 am-3 pm, in Mill Park in Augusta.

River Day will still host kids' events but will now have activities targeted for all ages in Mill Park and throughout the area including downtown on Water Street and at Old Fort Western. It will also have 3 stages: one will combine the dance and kids stage and the other two are for bands and Bee a Country Star.

Some of the great activities of the day will include: a petanque tournament, bounce house, chainsaw wood carving demos, face painting, fire truck display, wagon rides, clothing vendors and many food vendors.

The rain location will be the Augusta Civic Center.

All attendees are encouraged to bring blankets, lawn chairs, sunscreen, and good walking shoes. For more information visit www.AugustaMaine.com or call 623-4559.





622-6353

Cut to order
in lengths from 14” to 23”

Green Certified Wood, Seasoned, & Ash
Cut, Split & Delivered

853 Civic Center Drive, Augusta, ME 04330

Changes?
Updates?

New contact information?
Please let us know...

mo.breault@gmail.com
or ebelnews@earthlink.net



DARE TO COMPARE

Best Prices on Inside,
Outside Boat Storage,
Shrinkwrapping &
Winterization

Craig Pooler
Cell 207-314-3287 • Office 207-495-3421
Email: belgradeboatstorage@yahoo.com
www.BelgradeBoatStorage.com



— Calendar —

Friday 6/23 and Saturday 6/24 -
Summer Yard Sales, hundreds of items,
something for everyone, 314-9746,
Lions Club, 15 Hubbard Street,
Oakland.

Thursday 6/22 through Sunday 6/25 -
"Shout! A Swinging 60s Sensation,"
474-7176, Lakewood Theater, Route
201, Madison.

Friday 6/23 through Sunday 6/25 -
"Noises Off," 7:30 pm Friday and
Saturday, 2 pm Sunday, 626-3698,
Gaslight Theater, Winthrop Street, City
Hall, Hallowell.

Saturday 6/24 and Sunday 6/25 -
NEPHC Showdown in Skowtown
APHA/All Breed Horse Show, covered
arena, concessions, free to the public,
446-9910, Skowhegan Fairgrounds,
Madison Avenue/Route 201,
Skowhegan.

Saturday 6/24 and Sunday 6/25 - Bond
Brook Mountain Bike Race and
Festival, 2-day stage race, live music,
kids fun race, camping, tasty food,
www.treadfest.org, Bond Brook trails,
Augusta.

Saturday 6/24 and Sunday 6/25 -
Annual Antique Tractor Festival, pulls,
demos, food, kids activities, 8 am, \$5
pp, 431-2718, 351 Waterville Road,
Norridgewock.

Saturday 6/24 - Country Breakfast, full
menu, 7-10 am, \$6.50 adults, \$3 10 and
under, 634-5313, First Congregational
Church, 36 River Road, Norridgewock.



Bearnstow
On Parker Pond, Mount Vernon, Maine

Public Events Calendar Summer 2017

June 19–23: Natural History Week at Bearnstow

Wednesday Classes at the Mount Vernon Community Center (All classes are at 7:30 p.m. and free to all.)

June 28: Ruth Grauert: "Shape, Space, Time, and Motion"

July 5: Véronique MacKenzie: "We All Can Dance"

July 12: Peter Kyle/Scott Guigere: "Slow Tempo"

July 19: Robin Gilmore "Exploring How We Move"

July 26: K.J. Holmes: "Creative Performance"

August 2: Claire Porter: "Writing and Moving"

August 9: Sara Pearson & Patrik Widrig: "Improvisation and Choreography"

August 16: Cathy Nicoli: "Bodies in Space and Place"

August 28: Jonathan Trejo: "Exploring Folkloric Dance"

Friday Performances at Bearnstow, 84 Bearnstow Road (All events are at 7:30 p.m. unless otherwise noted and are free.)

June 30: "Climate Change and Habitat Fragmentation of Maine Bees," presented by biologist Matt Scott

July 7: Day Camp Performance at 3:30 p.m.

July 7: Grauert/Mackensie Performance

July 14: Peter Kyle/Scott Guigere Performance

July 16: Songwriter/guitarist Gary Wittner and saxophonist Gideon Forbes in Concert

July 21: Robin Gilmore Performance

July 28: K.J. Holmes Performance

August 4: Claire Porter Performance

August 11: Pearson-Widrig Performance

August 18: Cathy Nicoli Performance

Formal Performances at the Union Hall in Vienna, Maine

August 26: Jonathan Trejo (from Mexico): A Concert of Mexican Folklorico at 7:30 p.m.

September 2: Bearnstow Artist Residents Performance at 7:30 p.m.

All events are open and free to the public.

Bearnstow is a 501(c)(3) nonprofit organization. Tax-deductible contributions are gratefully accepted.

For more information: please visit www.bearnstow.org or phone 207-293-2280.

MAINE-ly ELDER CARE

"Caring for the ones who cared for us"



In - Home Nursing • Personal Care Services • Homemakers
• Emergency Response Systems • Transportation Services

STATE REGISTERED PERSONAL CARE
AND HOMEMAKER AGENCY

465-3249

28 Center St., Oakland, Me 04963

www.Maine-lyElderCare.com

denise@Maine-lyElderCare.com

Expanded in 2014 to Better Serve Our Customers



**Belgrade Lakes
Marine & Storage, Inc.**

Winter Storage for Summer Vehicles

Secure newer storage facilities accommodate boats on trailers,
autos, and the largest RVs in 3 buildings totaling over 21,000 sq. ft.
Electrical charging outlets are available. Reasonable rates for real
protection from extreme winter storms and sun damage.

207-495-2378 • www.belgradelakesmarine.com

366 Augusta Road, Route 27, Belgrade, ME



Saturday 6/24 – 47th Annual Maine Lakes Conference, speakers, workshops, networking, lunch, 495-3617, University of Maine, Orono.

Saturday 6/24 - Annual BBQ, to raise funds for Smithfield Volunteer Fire Department, 11 am 'til gone, \$8, bring the children and sign them up for the Second Annual Junior Firefighter Challenge, Main Street, Route 11, Smithfield.

Saturday 6/24 - Fort Halifax Days, French and Indian War Reenactments by Living History Reenactors, musical entertainment, food, children's events, noon to 4 pm, Fort Halifax Park, Winslow.

Saturday 6/24 - Antique Outboard Museum, prview opening, 4-7 pm, 495-3302, Dry Point Drive, Belgrade Lakes.

Saturday 6/24 - Baked Bean Supper, 5-6 pm, \$7 adults, \$5.50 children, under 5 free, United Methodist Church, Highland Avenue, Gardiner.

Saturday 6/24 - Public Supper, sponsored by the Vernon Valley Masonic Lodge #99 to raise funds for Bikes for Books, 5 pm, \$10 adults, \$5 children, \$25 family, the Center for All Seasons, Route 27, Belgrade Lakes.

Saturday 6/24 - Kingfield Pops with the Bangor Symphony Orchestra, other entertainment and a fireworks finale, 265-7677, www.kingfieldpops.com, concert at the Kennedy Farm, Kingfield.

Saturday 6/24 - "My Father's Dragon," family show, 7:30 pm, 933-9999, Cumston Hall, The Theater at Monmouth.

Sunday 6/25 - Kennebec River Rail Trail Half Marathon, Relay and 5K Race/Walk, to benefit the maintenance of the trail, 7:30 am, www.krrt.org, 213-6007, City Center, Augusta.

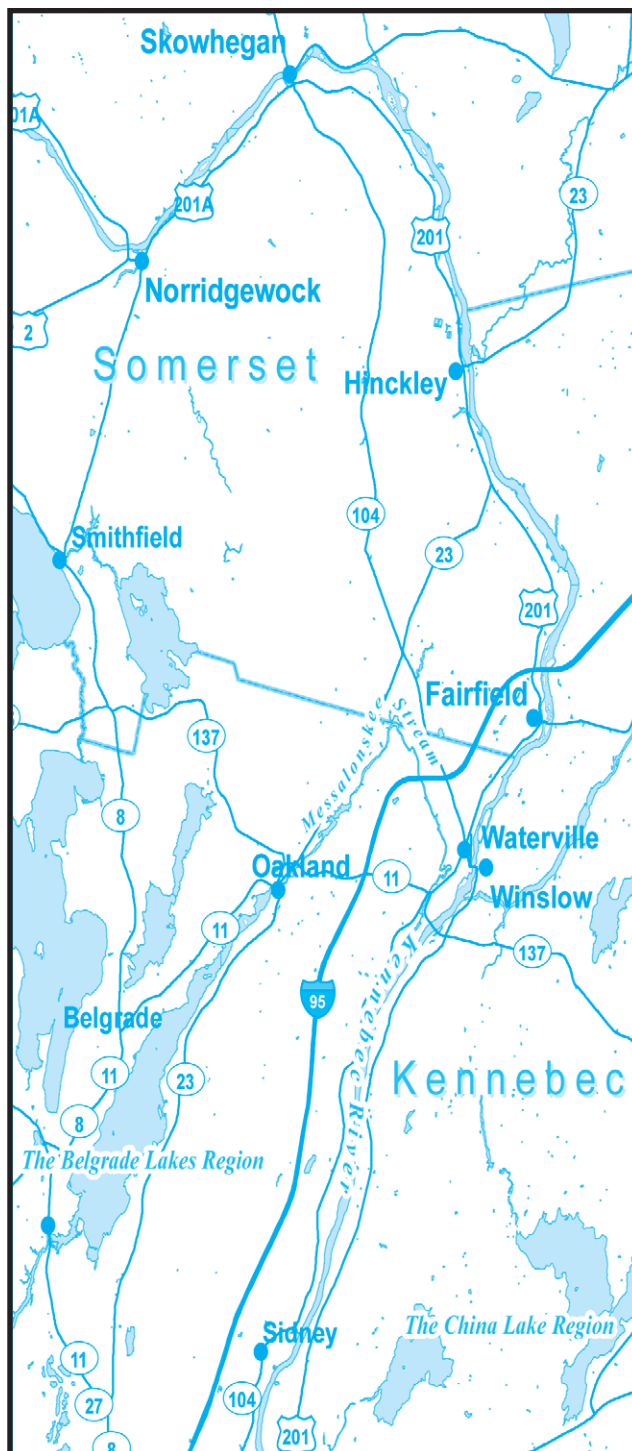
Sunday 6/25 - Local Cheese, Bread and Beer celebration, demonstrations, to benefit Somerset Cultural Planning, Wesserunsett Arts Council, \$10 in advance, \$15 at door, noon to 4 pm, 612-2571, Bigelow Brewing Company, Skowhegan.

Sunday 6/25 - Gershwin Under the Stars, Snow Pond Symphony, 7:30 pm, 844-476-6976, Snow Pond Center for the Arts, Sidney.

Tuesday 6/27 - Mad Science of Maine, "Engineering a Better World," an interactive children's show sponsored by the Belgrade Public Library, 10-11 am, free and open to the public, 495-3508, Center For All Seasons, Route 27, Belgrade Lakes.

Tuesday 6/27 - "Collected Lyrics," Edna St. Vincent Millay, "Let's Talk About It" Book Group, 5:30 pm, must be registered, 287-5600, Maine State Library, Augusta.

Kennebec Corridor



Tuesday 6/27 through Friday 6/30 - Oakland Public Library Book & Bake Sale, four days only, select gently used hardcover and paperback books, as well as rare and out of print titles, homemade bread, pies and cookies, 10 am-7 pm Tuesday, 10 am-6 pm Wednesday-Friday, 465-7533, 18 Church Street, Oakland

Wednesday 6/28 - Walking Tour of Waterville with Paul Urenock, director of real estate at Colby College, free, noon, 872-ARTS, Main Street, Waterville.

Thursday 6/29 - Opening Night Pop-Up Natural History Museum, 7 pm, donated admission, 832-0343, Maine Lakes Resource Center, Main Street, Belgrade Lakes.

Wednesday 6/28 - Public supper, entrée, rolls, coffee or lemonade, homemade dessert, 5 pm, \$8, Fairview Grange, Route 8, Smithfield.

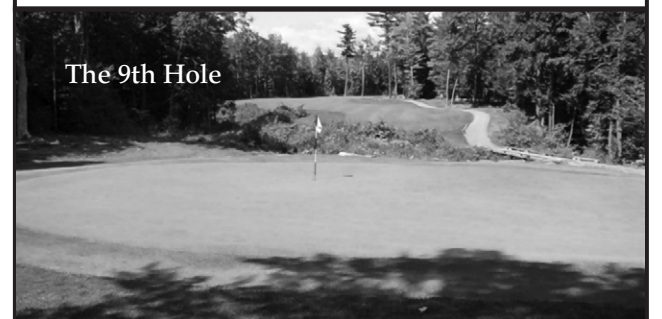


**THIRTY-SIX
GREAT REASONS**
MAINE'S ONLY 36-HOLE
PUBLIC GOLF COURSE
THE LARGEST GOLF FACILITY
NORTH OF BOSTON

Championship Golf, Full Pro Shop,
Driving Range, & Modern Clubhouse.
Groups Welcome

Natanis
GOLF COURSE

Webber Pond Road,
Vassalboro, ME • 207-622-3561



The 9th Hole

LakeHouse™
Renovations

Design • Build • Renovate



Traditional Style Camps,
Cottages and Lakefront Homes
207.242.3663

www.lakehousedesignbuild.com



ACME LAND SURVEYING, LLC

Professional Land Surveyors – Professional Foresters
Property Surveys, Subdivisions, Topographic Surveys, MLIs,
Elevation Certificates/LOMAs, ALTA/ACS Surveys,
Deed Research, Wetland Delineation, Forest Management

108 Fairbanks Rd., Suite 5

Farmington, ME 04938

Website: www.acmelandsurveying.com

Tel. (207) 778-4081

Toll Free (800) 778-4081

Email: info@acmelandsurveying.com



DAY'S REAL ESTATE

"The Waterfront Specialists"

262 Augusta Road, PO Box 284

Belgrade Lakes, Maine 04918

207-495-3111

www.daysrealestate.com

daysrealestate@roadrunner.com



Jeannie G., LMT

Licensed Massage Therapist

120 Drummond Avenue, Suite 1
Waterville, Maine 04901

Phone: 207-509-1251

jeanniegmt@gmail.com

Veteran and Clergy Preference Discount

An essential component of Self-care and recovery, stress reduction and improved circulation, consider Massage Therapy as preventative maintenance for improved quality of life. Call for flexible scheduling, Monday through Saturday.

Member AMTA





Lynch

LANDSCAPING INC.
FOR THOSE WHO DESIRE QUALITY

207-474-2420

Design - Install - Maintain

Designing landscapes to beautify your property and protect our natural resources - *Installing* these landscapes in a manner that promotes sustainability and prevents erosion - *Maintaining* these landscape so your investment lasts a life time



Licensed, Certified & Accredited
For All Of Your Landscaping Needs

www.lynchlandscaping.com



Belgrade Vacation Rentals

CAMP & COTTAGE RENTALS

Located next to Pete's Pig Barbecue!

Contact Us Today! **(207) 495-4011**

www.BelgradeVacationRentals.com

Own A Property? We Will Rent it for You!



RAILROAD SQUARE CINEMA

Showing the Best of World and American Cinema


17 Railroad Square, Waterville, Maine, 04901

24-hour movie info:
207-873-6526

www.railroadsquarecinema.com



Home of the
Maine International
Film Festival
(July 14 - 23, 2017)
www.MIFF.org



COLBY MUSEUM OF ART

free and open to the public

Colby College Museum of Art
Waterville, Maine
colby.edu/museum
207.859.5600




ST. MICHAEL SCHOOL

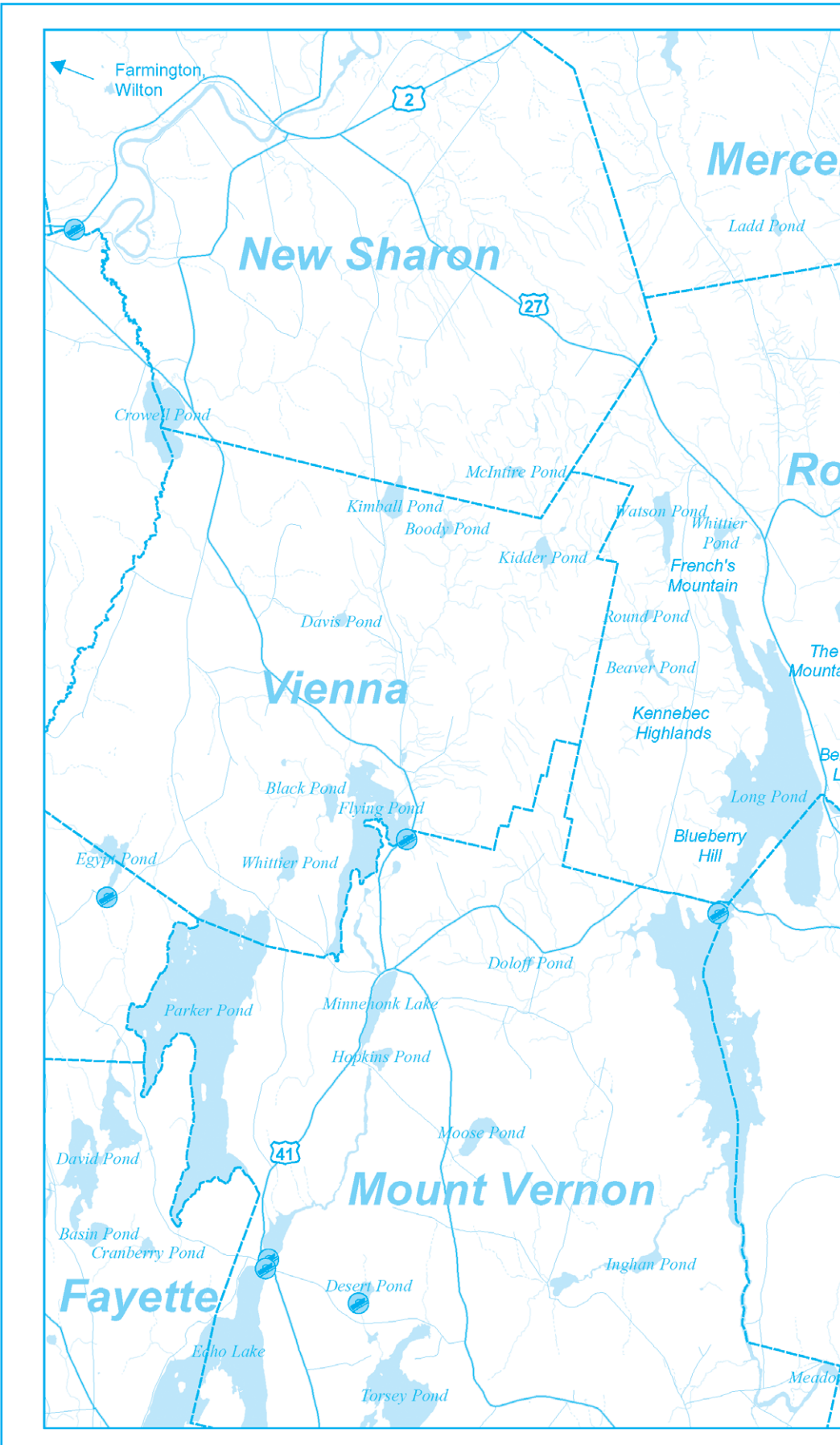
56 Sewall Street, Augusta, ME 04330
207.623.3491 www.smsmaine.org

**NEW Fall 2016...
PRE-K for 3 year-olds!**

St. Michael School will be opening a new Pre-School Program for 3 year-old children starting in the fall. This Program will have a curriculum, daily schedule and an overall program that is consistent with the mission and values that have been associated with a St. Michael School education. Register your child TODAY!



A Legacy of Excellence,
a Foundation for the Future.




EYE CARE OF MAINE

"Your Sight is Our Vision"


- Comprehensive Eye Exams
- Eyewear Center / Contact Lenses
- State of the Art Cataract Surgery
- Retinal Diseases and Glaucoma
- LASIK Refractive Surgery
- Laser Surgery
- Oculoplastic Diseases
- Botox, Juvederm and Latisse

• Ambulatory Surgery Center


www.Maine2020.com




Steve R. Witkin, M.D.



Peter C. Kohler, M.D.




James R. Putnam, M.D.




Marc B. Daniels, M.D.




Helen Bell-Necevski, O.D.



Lorie Lepley Parks, O.D.



Michael C. Parks, O.D.



Ian M. Jones, O.D.

325A Kennedy Memorial Drive
Waterville, Maine 04901

873-2731
(800) 660-3403

RIVERSIDE FARM

RESTAURANT & WINE MARKET

Restaurant Hours:
Brunch
Saturdays & Sundays - 10am-2pm
Lunch
Tuesdays - Fridays - 11am-2pm
Dinner
Thursdays - Saturdays - 5:30pm-8:30pm

Wine Market Hours:
Tuesdays - Fridays - 10am-5pm
Saturday - 10am-2pm

291 Fairfield Street
Oakland, ME 04963

For reservations call 207-465-4439

RiversideFarmMarket.com



RIVERFRONT BARBEQUE & GRILLE

WORLD CLASS BARBEQUE

SEAFOOD, PASTA, & VEGETARIAN ENTREES

207.622.8899

300 WATER STREET, AUGUSTA, MAINE

WWW.RIVERFRONTBBQ.COM

FULL SERVICE DINING * CATERING * BULK TAKE OUT



The Gin Mill

Augusta, Maine

Augusta's finest upscale lounge featuring
fine wine, martinis, and over 100 brands
of beer from Germany to Japan

Thursday thru Saturday 3:00pm until Midnight,
Above the Riverfront Barbeque & Grille
at 300 Water Street
207.620.9200

Lakepoint REAL ESTATE

"Put The Team to Work For You"

207.495.3700

GAIL RIZZO 207-242-8119
gail@gailrizzo.com



PAT DONAHUE 207-730-2331
pldcamp@msn.com



GREAT POND, BELGRADE: 200'
Lakefront. 4.9 Acres with
Sunset Views. Short
boat ride to Belgrade
Lakes Village.
#1303529 \$125,000



NEW LISTING

FLYING POND, VIENNA:
133' Lakefront. 4BR/2BA
Year-round. Custom kitchen,
living room, dining area,
expansive views. Family
room, walkout finished
basement. #1310054
\$296,900

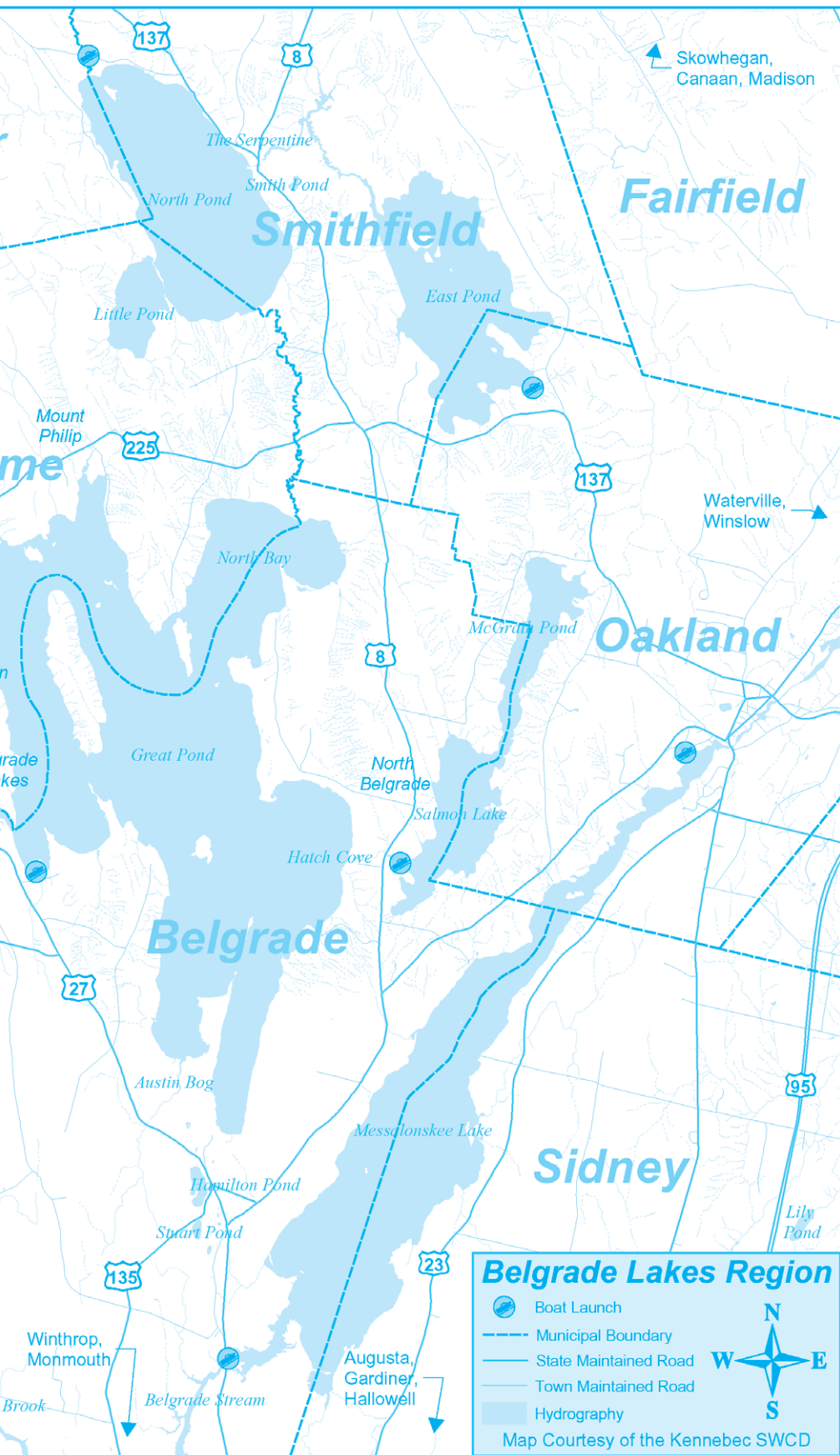


**GREAT POND, BEL-
GRADE:** Two cottages,
one on the water.
4BR/2BA, custom
kitchen, LR, deck. 150'
frontage. #1210659
\$349,900



**GREAT POND ACCESS,
BELGRADE:** In Cedar
Camps Community with
own dock. 2BR Cottage,
screened porch.
Renovated in 1990.
#1281147 \$192,000

221 Main Street, Belgrade Lakes, Maine 04918



Visit the Businesses on Marina Drive

Family Fun Days BOAT RENTALS



O'Brien Water-Sports Pro Shop

**Don't Be Left
Standing On
The Dock**

**Reservations:
Online Only**

www.greatpondmarina.com **Open Every Day 8-5**

Old Town
CANOES * KAYAKS

Lakeside Cottage Rentals



**Exclusive
Lakeside
Rentals in the
Belgrade
Lakes Region**

Located at 25 Marina Dr.
(207) 495-4046
www.LCRentals.com

Waterfront Property Owners

We offer full service rental management services. Please
call if you are interested in having us manage your home.



sadiesboathouse@hotmail.com

• 207-495-4045 •

Like us on Facebook!
Open Friday & Saturday
from 5 PM - 9 PM

Brown Dock Services

George: 495.2600 Jason: 316.7514

Display Docks & Lifts at Great Pond Marina

www.browndockservices.com

Lakepoint REAL ESTATE

P.O. Box 221, 221 Main Street
Belgrade Lakes, Maine 04918
Cell: (207) 592-5577
Office: (207) 495-3700
Fax: (207) 495-3707
www.belgradelakepoint.com
stephanie@belgradelakepoint.com



Stephanie Yeaton
Broker

Clark Marine

Manchester - Monmouth - Belgrade

57 PUDDLEDOK ROAD, MANCHESTER, MAINE
207-622-7011 | CLARKMARINEMAINE.COM

GLASTON



Bryant



Avalon



CRESTLINER



The one stop shop for your fresh water boating needs!

G & L CONTRACTING

- New Construction
- Additions
- Dock Installations
- Construction

207-495-9009

www.gandlcontractingmaine.com



Lift Services

Serving: Great and Long Pond,
Messalonskee, and Cobbossee



— Upcoming —

JULY

- On Saturday, July 2 at 7:30 pm the Theater at Monmouth will hold its annual variety sho featuring the talents of the 2017 Summer Company. 933-9999
- The Friends of the Cobbossee Watershed will hold the 15th Annual Friends on the 4th 5K - run, jog or walk, starting at Norcross Point in Winthrop at 8 am. 621-4100
- The Friends of the Belgrade Public Library Book and Bake Sale will be held at the Center for All Seasons, 9 am-2 pm on Tuesday, July 4. 495-3508
- The 3rd Annual "Are You Buff Enough?" on Saturday, July 8, 9-11 am at the Fairview Grange in Smithfield is a How to Become LakeSmart-er Workshop. An optional pontoon boat ride to follow, weather permitting. 313-2494
- On Saturday, July 8 a B-Well Revolution Festival will be held 10 am-4 pm at the Center for All Seasons in Belgrade Lakes. 495-2560
- The 4th Annual Drive Thru Chicken Barbecue at Unity United Methodist Church will be held on Saturday, July 8, 11:30 am til gone, \$9.

- Bill Berlinghoff will be the featured singer at the Union Coffeehouse on Saturday, July 8, at 7 pm, followed by open mic. Donations \$5.
- The 2017 Annual Meeting of the McGrath Pond/Salmon Lake Association will be on Thursday, July 13 at 6 pm at the North Belgrade Community Center, Route 8, North Belgrade.
- The Maine International Film Festival, featuring 50 filmmakers and over 100 films, will be held on July 14-23 in Waterville. Miff.org 861-8138
- The Mt. Philip Grange July Monthly Bean Supper will be Saturday, July 15, 4:30-6 pm, Route 25, Rome.
- A Golf Tournament, to benefit the Kennebec Leadership Institute, will be held on Monday, July 17 at 10 am at the Augusta Country Club. KennebecValleyChamber.com
- The Annual 5K Road Race to benefit the Belgrade Public Library will be on Saturday, July 29, at 8 am at the Belgrade Central School. 495-3508
- On August 2-5, River Fest will be held in Skowhegan including Moonlight Madness, the Rotary Lobster Bake and events on the Kennebec River. 612-2571

AUGUST

- The Taste of Greater Waterville, sponsored by the Mid-Maine Chamber of Commerce, will be held on Wednesday, August 2 in downtown Waterville. 873-3315
- A Town of Belgrade Recycling Event will be held August 9, 10 and 12 for old paints, primers, stains, sealer and clear coatings - architectural type only, no aerosols, solvents - in original container, original label and secure lid. Belgrade Transfer Station. 592-0678
- The 198th Skowhegan State Fair runs from August 10-19. www.skowheganstatefair.com
- Live! On the Lake Music Festival! Is scheduled for Saturday, August 19 at Snow Pond's Bowl in the Pines, Sidney. 465-3025
- The August Blistered Fingers Family Bluegrass Music Festival with 12 outstanding bands will take place August 23-27 at the Litchfield Fairgrounds. 873-6539

SEPTEMBER

- The 2nd Annual Skowhegan Craft Brew Festival with local food, live bands, guided tours of the Somerset Grist Mill and visits to the riverfront and the Langlais Art Trail will be held Saturday, September 2 in downtown Skowhegan. SkowheganCraftBrewFest.com



Tadpole Patrol- Summer Fun in the Watershed!

Tadpole Patrol is the Friends of the Cobbossee Watershed's innovative and immersive learning experience aboard the OTTER II, our 22' pontoon boat. For 13 years, children have boarded our "floating classroom" to learn about lake ecology and how to test and protect water quality. Today, we offer five different versions of Tadpole Patrol for children of all ages to explore, play and learn outdoors in the Cobbossee Watershed!

The Tadpole Patrol program offers five different levels of lake exploration. Level 1 is the original Tadpole Patrol program geared for children entering grades 2-4. At this level, children will experience the ecology of the lake through exploration, observing wildlife both in and out of the water and learn the basics of water testing with professional equipment! The second level is TP II- Lake Science Investigators (LSI) and is for children entering grades 4-6. Level II investigators become "science investigators" as they practice their observation and data collection skills with their own keepsake journal. Participants are able to view aquatic life using an underwater camera and begin to learn about identifying native and non-native plant species as well as the threat of invasive aquatic plants to the area. TP3- Jr. Lake Monitors is the third level offered for youth entering grades 6 and up. Level 3 participants continue their scientific investigations as they are educated to conduct proper water quality date measurements themselves and will compare their collected data with data recorded by the scientists at Cobbossee Watershed District. Our fourth version, Spotter's Amphibious Adventures is for children ages 8 and older where both land and water are explored! Participants cruise with the Friends to a private island to explore, learn all about the importance of riparian areas and the basics of "Leave No Trace"



principles. Lastly, we've heard from years that parents would like to join the Friends on our "floating classroom"! What better way to enjoy a beautiful summer day than out on the lakes with the whole family! Families enjoy an 1-hour excursion where "kids of all ages" can observe wildlife above and below the water, share historical lake facts and experience water monitoring with professional equipment.

All Tadpole Patrol programs take place aboard the Friend's 22' pontoon boat, the Otter II. This

"floating classroom" enables all participants to have a unique, interactive, and most importantly FUN experience that teaches them about the importance of watershed protection and water quality. The Friend's 2017 Tadpole Patrol programs are generously supported by Clark Marine, Augusta Fuel Company and Kennebec Savings Bank. Please contact Cami Wilbert, Education & Programs Director at: cami@watershedfriends.com or 621-4100 for the 2017 Tadpole Patrol schedule and registration forms.





— Conservation Too —

Let's Get Blueberries: Conservation Practices in Blueberries

Wild blueberries have become part of the culture of Maine. It seems like they have been around forever, and every year people are more and more encouraged to consume this fruit fresh for its health benefits (antioxidant, anticarcinogenic, etc.). Maine is the top producer of wild blueberries in the country, consisting of around 44,000 acres of production. And what is most incredible about this crop is that most of the fields occurred naturally and were discovered hundreds of years ago. As the years have gone past, and production of these has become widely important, the cultural practices have changed. Now production has been established as a two year cycle, one for growth and one for harvest.

Once the harvest is done, plants are pruned so they start their vegetative growth cycle again. Traditionally, farmers have used burning as their pruning technique. More recently, as a way to reduce emissions and protect air quality, farmers have been encouraged to mow these fields. But before pruning, farmers have to remove the rocks and boulders from the fields. Since wild blueberries were some of the first plants to appear after the glaciers receded, these rocks were left standing in these fields and are one of the reasons that farmers burn, as a way to work around them. These rocks can cause major problems for mowing equipment, and it is better to take them out ahead of time. It cannot be denied that burning has its advantages, as the incidence of pest (insects, diseases) is lower. But mowing presents some incredible advantages of its own. Most people who burn their fields use flammable oil, and the price of oil these days is not a pretty sight to look at. Plus every acre of blueberry crops burned consumes around 80 gallons of flammable oil, pretty high price for a farmer to incur every 2 years. Mowing presents a great opportunity for farmers to reduce their cost of pruning.

...continued from page 4

Guest Article by Luis Aponte via Kennebec County Soil & Water Conservation District.

The practices identified by Luis are equally valid for landowners considering ways to manage their property and the stormwater erosion that may occur there. Plus you learn more about Wild Blueberries.



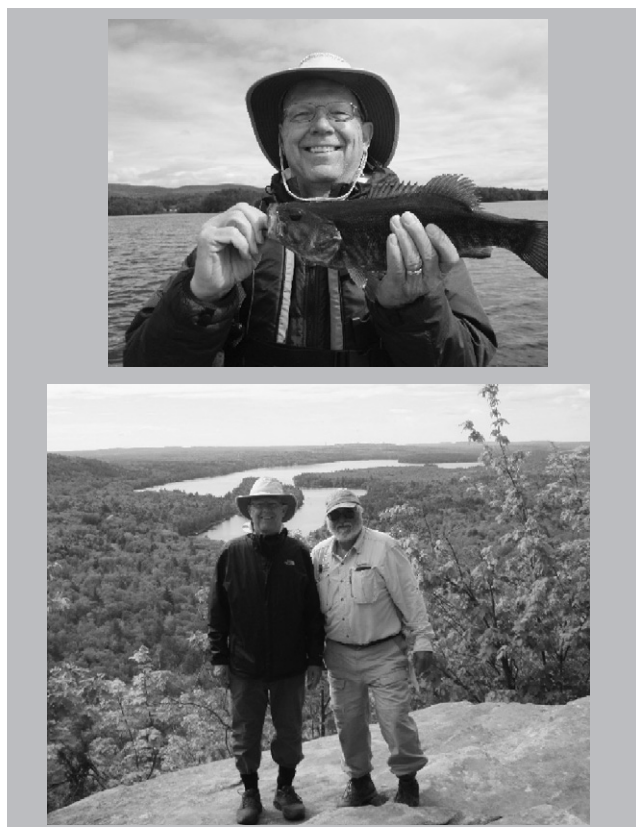
Additionally, by mowing farmers can take advantage of the removed vegetation to increase the organic matter of the soil, thus promoting a healthier environment for the new stems to grow in. Truth be told, pest management has to be more intensive when the stems are mowed. The farmers have to be much more perceptive to issues like mummyberry, blight and insects including the blueberry maggot and flea beetle. However, with a good scouting systems and enough monitoring this should not be a problem. As long as these pests are detected early on, they can be managed/sprayed as needed. Even with its greater management level, mowing makes for a healthier and more environmentally friendly system.

Blueberry plants spread throughout the field as rhizomes that branch out of the mother plant, which is also known as a clone. Each of these clones will be different, and an average clone can cover up to 250 square feet of land. As these rhizomes spread, the field will be covered more evenly. The spread of rhizomes throughout the field will increase the production and can sometimes even double the average production values.

There has been extensive research on how to promote these rhizomes to spread more rapidly, and as some of the techniques involve maintaining soil health and nutrient management, there is a conservation practice that stands out. Mulching has proved to be an important practice in the production of blueberries. By mulching, farmers are creating an environment that greatly improves conditions for these plants to spread evenly and healthy. Mulching not only increases soil organic matter, but also moderates soil temperature, increases soil moisture, protects plants from frost heaving and reduces soil erosion. There are various types of mulch that farmers can use, from sawdust to bark. But the vast majority of farmers use wood chips, as they are cost effective and easy to find. It has become a very important practice inside the blueberry community, and its increased use has helped farmers achieve greater yields.

There are some other conservation practices that could help blueberry farmers maintain a healthy environment and keep the plants productive and healthy. Pollination is very important in blueberries, and the establishment of a native pollinator habitat can help increase yields. Soil erosion in blueberry fields is a big concern, especially in farms with little cover and steep slopes. To address erosion issues lined waterways can be established to slow down the flow of water and reduce soil loss. Establishing an integrated pest management plan can reduce the use of chemicals and develop a more efficient system to deal with pests. There are many more, but the general idea is to work in the most environmentally friendly way to make the land more productive and the operations more efficient.

For information about any of our conservation projects please contact Dale Finseth at 622-7847, x 3 or check our website at www.kcsowcd.org



Steve Jurmu with nice Long Pond bass and with me atop French Mountain

local hiking trails are in pretty good shape, very lush, and I expect much better mushroom foraging than last year. There is a group of dog owners who, almost every day, get together early in the morning to hike BRCA's Mountain Trail off Mountain Drive. Hiking with a dog is a great way to really learn a property and see how it changes over the season. Dogs keep you in shape because they won't let you skip too many days. Their senses, especially smell, are keener than yours and they will usually spot most wildlife before you do. The BRCA allows dogs on our hiking trails but the dogs must be

under the control of the owner, either on lead or under verbal control. If your dog, "does its business" on the trail, please take a stick and move it well off the trail into the woods. If you see hikers approaching, please put your pet "on lead" until they pass, in case they are not "dog people."

Among the many hats I wear, I serve as the president of the board of The Maine Lakes Society, a state-wide nonprofit dedicated to protecting the health of Maine's lakes for future generations through science-

Continued on page 15....

SALES • SERVICE • INSTALLATION
www.generatorsofmaine.com 207-495-2285

KOHLER
 IN POWER. SINCE 1920.

Platinum Dealer

Specializing In

CAMP JACKING AND LEVELING

John Webster
 32 Webster Way
 Belgrade, ME 04917

Sill Replacement
 Retaining Walls

(207) 495-2965
 35+ Years Experience



F. A. Rizzo Appraisal Company Frank Rizzo

Consultant/Appraiser

Estate Appraisal & Planning

Certified Residential cr709

tel. (207) 495-3365

cell (207) 458-4916

farizzo@roadrunner.com



Since 1992

ALDEN CAMPS

Est. 1911



- Lobster Bakes on Friday nights by Reservation
- Lakeside Cottages • Boats & Motors
- Full American Plan
- Dining on the Porch by reservation Saturday through Wednesday

3 Alden Camps Cove
Oakland, Me 04963
(207-465-7703)

E-mail: info@aldencamps.com • Website: www.aldencamps.com



BOOKS, PUZZLES, TOYS, GAMES

A store for children of all ages,
the young and the young at heart.

Open Monday 12 to 5 • Tues. - Sat. 9 to 5
52 Main St. Waterville 872-4543

Maple Leaf Self Storage

Belgrade Me - 3.3 mi off Rte 27 on Route 135

495-2191

Various size units
Owners live on site



Boat / Auto Storage
By foot or unit

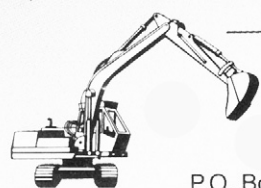
David J. Auclair
www.auclaircycle.com

AUCLAIR CYCLE & SKI

64-66 BANGOR ST. AUGUSTA, ME 04330
623-4351 / 800-734-7171 • Fast Professional Service
Bicycles • Skateboards • Roof Racks • Rentals

DAVID STEVENS

Excavation & Septic Systems



LOAM GRAVEL SAND

465-3815

Cell: 314-0314

P.O. Box 146 • Belgrade, Maine 04917

CASTLE ISLAND CAMPS

Bait, Tackle, Gas,
Boat, Kayak, and
Paddleboard
Rentals



Boats, Daily or
Weekly

495-3312

Rentals for
Long Pond Only

ANTIQUE OUTBOARDS of BELGRADE

MUSEUM / DISPLAY

Wednesdays - 1-6 p.m. Saturdays - 9-12 a.m.

51 Dry Point Drive, Rome
(in past Wings Hill 1/8th mi.)

495-3302

Luckiest Boy Books too!

HOANG REALTY

Pam Armour

Realtor

31 Western Ave.
Augusta, Me 04330
207.314.7445 cell
207.623.0623 office
pbrunye@yahoo.com



— Accommodations —

Alden Camps, lakeside cottages on East Pond, established 1911, American Plan meals, boat and motor rentals, dining and lobster bake open to public by reservation, 3 Alden Camps Cove, Oakland, 465-7703, www.aldencamps.com

Bear Spring Camps, waterfront cottages on Great Pond, home-style meals, sandy beach, boats, motors, docks, 60 Jamaica Point Road, Rome, 397-2341, www.bearspringcamps.com

Castle Island Camps, cottages on the water, Long Pond, American Plan meals, boat and kayak rentals, Castle Island

Road, Belgrade Lakes, 495-3312, www.castleislandcamps.com

The Village Inn, rooms near the water, in the heart of the Village, 157 Main Street, Belgrade Lakes, 495-3553, www.villageinnandtavern.com

Belgrade Vacation Rentals, lakeside camp and cottage rentals throughout the area, long and short stays, many size accommodations and rates, 81 Main Street, downtown Belgrade Lakes, 495-4011, www.belgradevacationrentals.com

Lakeside Cottage Rentals, featuring over 70 private homes, 24/7 customer friendly service, 25 Marina Drive, Belgrade Lakes, 592-5577, 495-4046, www.lcrentals.com



— Notebook —

Vintage Baseball Festival

• The 2nd Annual New England Vintage Baseball Festival, sponsored by the Cornish Historical Society and the Cornish Fairgrounds Committee, will be held June 24-25 at the historic Fairgrounds, Route 25. Nine teams representing 6 states will play 8 games per day on 3 fields. The games are played by 1864 rules using lemon peel baseballs and wooden bats, and the players wear 1860s wool uniforms. There will be a youth baseball clinic on Saturday at 1:30 pm, a visitors' tent, food concessions, historic exhibits and souvenir t-shirts. On Saturday, Maine Baseball Hall of Farmer Mort Soule will perform "Casey at the Bat." \$5 adults, \$3 ages 6-12, under 6 free. 625-3095 or 625-3281

Friends of Messalonskee "50/50" Statewide Fishing Derby

• Bait your hook, cast your line and reel in cash. The Friends of Messalonskee are sponsoring a statewide fishing derby through Thursday, July 20 to raise funds to benefit the programs that directly fight the battle against the invasive aquatic plant Variable Leaf Milfoil. There are 13 species of fish that qualify. Enter as many fish in as many categories as you wish - no limit of entries. No weigh-in; just take a picture of the fish against a measuring tape, include the FOM ticket in the photo and email it to friendsofmesalonskee@gmail.com. 465-8333

Friends of the Cobbossee Watershed

• Nature Day Camp will be offered July 17-21 and July 31-August 4, 8:30 am-4:30 pm, at the YMCA Camp of Maine in East Winthrop for children entering grades 4, 5 and 6. The cost of \$230 per 5-day session includes lunch, all instruction and equipment, plus a special camp session of Tadpole Patrol aboard the Friends' 22' pontoon boat, the OTTER II. Early Bird registration \$220 until July 1. Cami Wilbert at 621-4100

Maine Preservation

• Maine Preservation is seeking statewide nominations of historic properties for inclusion on the 19th annual list of Most Endangered Historic Places. The nomination deadline for 2017 is June 23. 847-3577

Volunteer Lake Monitor Program

• The Maine VLMP is holding a Lake Vulnerability Workshop on Friday, June 30 at 24 Maple Hill Road, Auburn at which researchers will present the findings of a 2-year project on factors that influence the vulnerability of Maine lakes. Entitled "Engaging Citizen Scientists to Evaluate the Potential for Water Quality Decline in Maine Lakes: A Social Science-Physical Science Collaboration for Lake Stewardship," the workshop will meet from 10 am-3:15 pm. Refreshments and lunch are offered at no charge. Pre-registration is required. 783-7733

Augusta

• The City of Augusta's Bicentennial Nature Park for Augusta City residents and guests is open for the season. Hours of operation are 11 am-7 pm seven days a week. There is a nominal charge to Augusta families and individuals. Season pass and daily admission information is available at the Park office or at Buker Community Center. Available are swimming, picnicking, hiking, fishing, beautiful scenery and wildlife, including loons and ospreys on the lake. The park's entrance is located on Route 3, 1/2 mile east of the Weeks Mills Road. 626-2352, 620-7010

Belgrade

• Belgrade Regional Health Center welcomes a new provider to the medical team, Kathryn Morang, who recently completed the Family Nurse Practitioner program at the University of Southern Maine. Previously she obtained associate and bachelor degrees at UMA. A native of the area, Kathryn has 7 years of nursing in the areas of emergency, hospice, surgery and pediatrics. 495-3323

Gardiner

• Waterfront Park is the site of two exciting summer activities every week: antique cars and evening concerts. Every Thursday a Classic Car Cruise In plus music, food booths and vendors takes place 5-7 pm at the park. Every Friday through August 25 a free concert sponsored by Johnson Hall is scheduled for 6:30 pm on the waterfront. www.johnson-hall.org

Hallowell

• The Harlow Gallery invites artists working in



Dining

Augusta

• **Riverfront Barbeque & Grille and Gin Mill Lounge**, world class barbeque, seafood, pasta and vegetarian entrees, full service dining, catering, bulk take out, 300 Water Street, Augusta, www.riverfrontbbq.com, 622-8899

Belgrade

• **Pete's Pig**, 81 Main Street, sandwiches and platters for picnic-style eating on the premises or to go, also offering a full range of catering, Main Street, Belgrade Lakes Village, www.petespig.com, 495-4095

• **Sadie's Boathouse Restaurant** at Great Pond Marine, hearty contemporary American fare, 25 Marina Drive, Belgrade Lakes, 495-4045, 242-1273

• **Spiro & Company**, gourmet Greek food, Main Street, Belgrade Lakes Village, www.spiroandcompany.com, 441-2103

• **The Village Inn and Tavern**, 157 Main Street, Route 27, Belgrade Lakes Village, 495-3553, www.villageandtavern.com

• **Winterberry Farm Café**, homemade treats, pie, cookies, granola bars, grilled organic cheese sandwiches, veggies, drinks, Route 27, Belgrade, 649-3331

Oakland

• **Alden Camps**, lunch or dinner by reservation Saturday-Wednesday space permitting, lobster bakes on Friday night by reservation, 3 Alden Camps Cove, Oakland, www.aldencamps.com, 465-7703

• **Riverside Farm Restaurant & Wine Market**, simple, wholesome food and drink since 1990, 291 Fairfield Street, Oakland, www.riversidefarmmarket.com, 465-4439

Oakland - Wines & Spirits

• **Tree Spirits**, tasting room for award winning wines and spirits made from local apples, pears and maple syrup, tours available, 152 Fairfield Street, Oakland, www.treespiritsofmaine.com

Smithfield

• **Smithfield Ice Cream Place**, lunch, dinner and dessert, 855 Village Road, smithfieldicecreamplace.com, 368-5039

the comic book industry and artists inspired by comic book art and themes to submit work to be considered for POW, a juried art show on view September 8 - October 21. Deadline for email submission is August 1 by 11 pm. 622-3813

• "Second Sundays," a series of free community art-related events has programs scheduled through the end of 2017 with plans to continue into 2018. The 2-4 pm series is open to all levels and ages; children under 10 must be accompanied by an adult. Upcoming Sundays include: July 9, Paper Cut Painting; August 13, Poetry; and September 10, Creative Writing. 622-3813 Mount Vernon

Readfield

• RSU 38 Maranacook Adult Education Kids' summer sports camps start Monday, June 26 as follows:

- Boys' Basketball Camp - grades 4-8: June 26-29
- Lakers' Track Club - boys and girls ages 6-15; June 26-August 12
- Boys & Girls Soccer Camp, grades 3-8; July 10-14
- Field Hockey Clinic, grades 4-8; July 25-28
- Little Kickers Soccer Camp, boys and girls ages 5-8; August 14-17

To register go to <http://maranacook.maineadulted.org> or call 685-4923, x 1065

Skowhegan

• The Town of Skowhegan's Run of River Committee has received a \$15,000 grant from the Davis Conservation Foundation for the Run of River Whitewater Recreation Area. Run of River will be a whitewater recreation area in and around the Kennebec River Gorge in downtown Skowhegan. It will include a whitewater park, an expanded and developed network of four-season, non-motorized trails, a riverfront promenade, fishing waters with improved fish habitat and a boathouse/events center. 614-4078

....Continued from page 13

based education, action, and policy (<http://mainelakesociety.org/>). In addition to overseeing the LakeSmart Program for lake associations across Maine, we have a program called LakesAlive, designed to help train tomorrow's lake stewards. We have a 30-ft floating classroom (the Melinda Ann) that we use to take school students and other youth groups out on Maine lakes to give them some hands-on, experiential lake science, such as doing plankton tows and Secchi depth readings. Last week, sponsored by the Kezar Lake Watershed Association, Phil Mulville and I towed the Melinda Ann to Kezar Lake where we took nearly 50 students from Molly Ockett Middle School and New Suncook Elementary School out over two days, teaching them a bit about watersheds and lake science. The kids had a ball and learned a lot. On the 5th of July, thanks to the Onion Foundation and the Maine Outdoor Heritage Fund (MOHF), we will be conducting a similar program at Belgrade's Center for All Seasons (CFAS) for their Camp Loon and Camp Golden Pond campers.

This area offers some great outdoor recreation, whether you like to hike, bike, birdwatch, fish, sail, or paddle a canoe or kayak. Pick up a map of the local trails at Day's Store or from the BRCA at the Maine Lakes Resource Center (MLRC). (Check out the Belgrade Lakes Association's (BLA) LakeSmart Program while you are there). Get out and explore! Sign your kids up to learn to sail through the Great Pond Yacht Club (<https://greatpondyachtclub.com/junior-sailing-program/>). And make sure you take a kid along on your next outdoor adventure.



157 Main Street/RT 27
Belgrade Lakes, Maine 04918
villageinnandtavern@gmail.com
207.495.3553
www.villageinnandtavern.com

THE VILLAGE INN AND TAVERN
Belgrade Lakes, Maine
since 1921



WINTERBERRYFARMSTAND.COM

Route 27, Belgrade
207.649.3331

KIDS FARM CAMP
Offering two one week sessions - 8:30-4pm daily
June 26 - 30 & July 24-28
Ages 5-11 \$200.00

Belgrade's working family farm
FARMSTORE & CAFÉ
Open 7 days a week, 9am - 6pm
Featuring all-organic products grown and produced here on the farm.
3 miles south of Belgrade Lakes
Village on route 27.




Pete's Pig
CATERING & BARBEQUE

Now Booking for 2018

- Corporate Functions
- Weddings & Rehearsals
- Special Events

Call (877) 860-1503
(207) 495-4095

www.petespig.com

NEW MAINE TOURMALINE JEWELRY.

L. TARDIF JEWELER
62 Main Street
Waterville, Me.
est. 1955

Tues - Sat
9 - 5

207-872-7542

SPIRO & COMPANY
Gourmet Food Truck
"A Fresh Taste of Greece"
Belgrade Lakes • 441-2103
Open Sun-Wed 11-4, Thurs-Sat 11-7
www.spiroandcompany.com

CROOKED ISLAND SAILING
LESSONS-RENTALS-DELIVERIES



207-495-9066



-Business Directory-

ACCOMMODATIONS

See page 18

ART

Colby College Museum of Art, 5600 Mayflower Hill, Waterville, 859-4000, www.colby.edu/museum/

BEVERAGES

Tree Spirits, 152 Fairfield St, Oakland, 861-2723, www.treespiritsofmaine.com

BICYCLES

Auclair Cycle & Ski, 64 Bangor St, Augusta, 623-4351, www.auclaircycle.com

BOAT COVERS

Waterville Upholstery & Canvas, 1042 Kennedy Memorial Dr, Oakland, 465-7847, www.watervilleupholstery.com

BOAT LIFTS

Hammond Lumber Company, Auburn, Bangor, Belgrade, Boothbay Harbor, Brunswick, Damariscotta, Fairfield, Farmington, Greenville, Pemaquid, Portland, Skowhegan, Wilton, 1 866-HAMMOND, www.hammondlumber.com

BOAT MOORINGS

Great Pond Marina, 25 Marina Drive, Route 27, Belgrade Lakes, 495-2213, www.greatpondmarina.com

BOAT RENTALS

Castle Island Camps, Long Pond, 441 Castle Island Road, Belgrade Lakes, 495-3312, www.castleislandcamps.com

Great Pond Marina, 25 Marina Drive, Route 27, Belgrade Lakes, 495-2213, www.greatpondmarina.com

BOAT SALES AND SERVICES

Clark Marine, 57 Puddledock Road, Manchester, 622-7011, mail@clarkmarine.biz, funonthewaterstartshere.com

Hamlin's Marine, 290 West River Road, Waterville, 872-5660, www.hamlinsmarine.com

Mid-Maine Marine and RV, 885 Kennedy Memorial Drive, Oakland, 465-2146, www.midmainemarine.com

BOAT STORAGE

Belgrade Boat Storage, 31 Pinkham's Cove Road, Belgrade, 495-3421, 314-3287, www.belgradeboatstorage.com

Belgrade Lakes Marine and Storage, Inc, 366 Augusta Road, Belgrade, 495-2378, www.belgradelakesmarine.com

Clark Marine, 57 Puddledock Road, Manchester, 622-7011; and Route 202, Monmouth, mail@clarkmarine.biz, funonthewaterstartshere.com

Great Pond Marina, 25 Marina Drive, Route 27, Belgrade Lakes, 495-2213, www.greatpondmarina.com

Hamlin's Marine, 290 West River Road, Waterville, 872-5660, www.hamlinsmarine.com

Maple Leaf Self Storage, 688 Manchester Road, Route 135, Belgrade, 495-2191, 441-5529

Mid-Maine Marine, 885 Kennedy Memorial Drive, Oakland, 465-2146, www.midmainemarine.com

BOOKS

Children's Book Cellar, 52 Main Street, Waterville, 872-4543, childrensbookcellar.com

BUILDERS

Craig's Carpentry/North Bay Estates, Route 8, North Belgrade, Craig Alexander, 649-3749

G&L Contracting, 116 Lakeshore Drive, Belgrade Lakes, 215-7951, 495-2325, 233-7408, gandlcontractingmaine.com

LakeHouse Design, Build, Renovations, 17 Birchwood Road, Augusta, 242-3663, www.lakehousedesignbuild.com

BUILDING MATERIALS

Hammond Lumber Company, Auburn, Bangor, Belgrade, Boothbay Harbor, Brunswick, Damariscotta, Fairfield, Farmington, Greenville, Pemaquid, Portland, Skowhegan, Wilton, 1 866-HAMMOND, www.hammondlumber.com

CAMP JACKING

Jacking and Leveling, John Webster, 32 Webster Way, Belgrade, 495-2965

COMPUTER CONSULTANTS

Macintosh Solutions, Michael Breault, 24 Welch Road, Wilton, 645-5083, cell 578-0226, www.michaelbreault.net

DENTAL CARE

Dental Hygiene Services, North Vassalboro, 680-9377

DINING

See Directory on page 15

DOCKS

Brown's Dock Services at Great Pond Marina, 495-2600, 316-7514, www.browndockservices.com

G&L Contracting, 116 Lakeshore Drive, Belgrade Lakes, 495-2325, 215-7951, 233-7408, gandlcontractingmaine.com

Hammond Lumber Company, Auburn, Bangor, Belgrade, Boothbay Harbor, Brunswick, Damariscotta, Fairfield, Farmington, Greenville, Pemaquid, Portland, Skowhegan, Wilton, 1 866-HAMMOND, www.hammondlumber.com

ELDER CARE

Maine-ly Elder Care, 28 Center Street, Oakland, 465-3249, www.maine-lyeldercare.com

ENGINEERING

Thayer Engineering, septic design, storm water mitigation, permitting, 17 Hasson Street, Farmingdale, 582-7762, www.thayereng.com

ESTATE APPRAISALS

F.A. Rizzo Appraisal Company, estate appraisal and planning for real estate, 495-3365, 458-4916, farizzo@roadrunner.com

EXCAVATING

Belgrade Boat Storage, 31 Pinkham's Cove Road, Belgrade, 495-3421, 314-3287, belgradeboatrentals.com

David Stevens, P.O. Box 146, Belgrade, 465-3815, cell 314-0314

EYE CARE

Eye Care of Maine, 325 E. Kennedy Memorial Drive, Waterville, 873-2731, 1-800-660-3403, www.Maine2020.com

FARMSTANDS

Winterberry Farm, 538 Augusta Road, Route 27, Belgrade, 495-2593, 649-3331, www.winterberryfarmstand.com

FINANCIAL PLANNING

Golden Pond Wealth Management, 129 Silver Street, Waterville, 873-2200, www.goldenpondwealth.com

FIREWOOD

J & M Logging, Inc. 853 Civic Center Drive, Augusta, 622-6353, www.jmlogginginc.com

FLOORING

Hammond Lumber Company, Auburn, Bangor, Belgrade, Boothbay, Brunswick, Damariscotta, Fairfield, Farmington, Greenville, Pemaquid, Portland, Skowhegan, Wilton, 866-HAMMOND, www.hammondlumber.com

GENERATORS

Generators of Maine, 262 Augusta Road, Belgrade, 495-2285, www.generatorsofmaine.com

GOLF

Natanis Golf Course, 735 Webber Pond Road, Vassalboro, 622-3561, www.natanisgc.com

HEALTH CENTERS

Inland Hospital, 200 Kennedy Memorial Drive, Waterville, 861-3000, 1-800-491-8600, www.inlandhospital.org

ICE CREAM

Smithfield Ice Cream Place, 855 Village Road, smithfieldicecreamplace.com, 368-5039



INSECT CONTROL

Mosquito Banditos, ,
mosquitobanditos-maine.com, 613-5656

JEWELRY

L.Tardif Jeweler, 62 Main St., Waterville,
872-7542, *ltardifjewelers.com*

KITCHENS

Hammond Lumber Company, Auburn, Bangor,
Belgrade, Boothbay, Brunswick, Damariscotta,
Fairfield, Farmington, Greenville, Pemaquid,
Portland, Skowhegan, Wilton, 866-HAMMOND,
www.hammondlumber.com

LAKE ASSOCIATIONS

Belgrade Lakes Association (BLA), Long Pond
and Great Pond, PO Box 551, 137 Main Street,
Belgrade Lakes, 512-5150,
belgradelakesassociation.org

LANDSCAPING

G&L Contracting, Belgrade Lakes, 215-7951, 495-
2325, 233-7408, *gandlcontractingmaine.com*
Lynch Landscaping, Skowhegan, 474-2420,
lynchlandscaping.com

MASSAGE THERAPIST

Jeannie G., 120 Drummond Avenue, Suite
1, Waterville, 509-1251

MOVIE THEATERS

Railroad Square Cinema, call for titles and times,
17 Railroad Square, Waterville, 873-6526,
www.railroadsquarecinema.com

MUSEUMS

Antique Outboards of Belgrade, 51 Dry Point
Drive, Rome, 495-3302
Colby College Museum of Art, 5600 Mayflower
Hill, Waterville, 859-5600, *www.colby.edu/museum/*

PHYSICAL THERAPY

Dockside Physical Therapy, 47 Main Street,
Belgrade Lakes, 495-3195, 512-2544,
Fax 512-2545

PIANO ENJOYMENT

Diane Gorman, 906 Manchester Road, Belgrade,
495-3222

PLUMBING

Paul Hanna's Plumbing, Belgrade, 495-3805

REAL ESTATE DEVELOPMENTS

North Bay Estates, Belgrade, 649-3749,
crgsnbe@yahoo.com

REAL ESTATE

Day's Real Estate, 262 Augusta Road, Route 27,
Belgrade Lakes, 495-3111, 1-888-495-3111,
www.daysrealestate.com

Hoang Realty, 31 Western Ave., Augusta, 623-0623,
www.hoangrealty.com

Lakepoint Real Estate, 221 Main Street, Belgrade
Lakes, 495-3700,
www.belgradelakepoint.com

Sprague & Curtis Real Estate, 75 Western Avenue,
Augusta, 623-1123,
www.spragueandcurtis.com

LODGING RESERVATIONS

See page 14

RESTAURANTS

See Dining Directory on page 15

RETIREMENT COMMUNITIES

Granite Hill Estates, 60 Balsam Drive, Hallowell,
626-7786, 1-888-321-1119,
www.granitehillestates.com

SAILING

Crooked Island Sailing, lessons, rentals, deliveries,
Peter McManus, Belgrade Lakes, 495-9066,

SCHOOLS

St. Michael School, grades pre-K 3-year-old
through 8th, 56 Sewell Street, Augusta,
623-3491, *www.smsmaine.org*

SECURITY SYSTEMS

Cayer Security Services, Inc, 208 College Avenue,
Waterville, 453-9177,
www.cayersecurity.com

SELF STORAGE

Maple Leaf Self Storage, 688 Manchester Road.,
Route 135, Belgrade, 495-2191

SURVEYING

Acme Land Surveying, 108 Fairbanks Road, Suite
5, Farmington, 778-4081,
www.acmelandsurveying.com

WINDOWS

Hammond Lumber Company. Auburn, Bangor,
Belgrade, Boothbay, Brunswick, Damariscotta,
Fairfield, Farmington, Greenville, Pemaquid,
Portland, Skowhegan, Wilton, 1-866-HAMMOND,
www.hammondlumber.com

LAKE AND LAND ASSOCIATIONS

THE BELGRADES...

- **East Pond Association,** Smithfield/Oakland,
www.eastpond.org
- **North Pond Association,**
Smithfield/Rome/Mercer, *www.northpond.net*
- **McGrath Pond/Salmon Lake Association (MPSL),**
Belgrade/Oakland, P.O. Box 576, Oakland, 04963,
873-5285, *www.mcgrathpond-salmonlake.org*
- **Belgrade Lakes Association (BLA) for Great Pond
and Long Pond,** Belgrade/Rome/Mount Vernon, PO
Box 551, 137 Main Street, Belgrade Lakes, 04918, 512-
5150, *www.belgradelakesassociation.org*
- **Friends of Messalonskee,**
Oakland/Belgrade/Sidney, PO Box 532, Oakland,
04963, 465-4622, *www.friendsofmessalonskee.com*
- **Belgrade Regional Conservation Alliance and
BRCA Conservation Corps,** PO Box 250, 137 Main
Street, Belgrade Lakes, 04918, 495-6039, *www.bel-
gradelakes.org*
- **Belgrade Lakes Region Business Group
(BLRBG),** PO Box 596, Belgrade Lakes, 04918, 495-
3700, *www.belgradelakesmaine.com*
- **Maine Lakes Resource Center/Docks to
Doorways,** PO Box 431, 137 Main Street, Belgrade
Lakes, 04918, 495-3617, 620-6029, *www.minelakesre-
sourcecenter.org*

BEYOND...

- **Friends of the Cobbossee Watershed,** PO Box
5003, Augusta, 04332-5003, 621-4100, *www.watershed-
friends.com*
- **Franklin County Soil & Water Conservation
District,** 107 Park Street, Farmington 04938, 778-4279,
www.franklincswcd.org
- **Kennebec County Soil & Water Conservation
District,** 21 Enterprise Drive, Augusta 04330, 622-
7847, ext. 3, *www.kcswcd.org*
- **Somerset County Soil & Water Conservation
District,** 12 High Street, Skowhegan 04976, 474-8324,
www.somersetswcd.org
- **Kennebec Land Trust (KLT),** PO Box 261, 331
Main Street, Winthrop, 04364, 377-2848, *www.tkltr.org*
- **Kennebec Messalonskee Trails,** PO Box 2388,
Waterville, 04903, 873-6443, *www.kmtrails.org*
- **Kennebec River Rail Trail,** PO Box 2195, Augusta,
04338, 623-8162, *www.krrt.org*
- **30 Mile River Watershed Association (30 MRWA),**
Kimball Pond in Vienna to the Androscoggin River,
PO Box 132, Mt Vernon, 04352, 685-4956,
www.30mileriver.org
- **Maine Lakes Society,** formerly Congress of Lake
Associations, PO Box 447, 137 Main Street, Belgrade
Lakes, 04918, 1-855-463-2652
- **Central Maine chapter of the New England
Mountain Bike Association (CeMeNEMBA),** 441-
6227, *www.cemenemba.org*

Changes?
Updates?

New contact information?
Please let us know...
mo.breault@gmail.com
or ebelnews@earthlink.net



Bearnstow
On Parker Pond, Mount Vernon Maine

A Natural History Week at Bearnstow
June 19-22 and 30, 2017

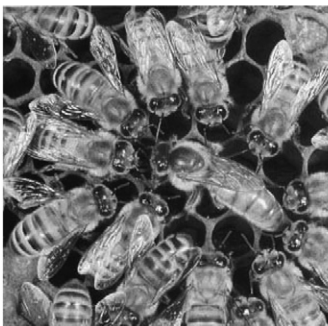
Program for Sunday, June 30

EVENING: 7:30 P.M., BEARNSTOW MAIN HALL

"Climate Change and Habitat Fragmentation of Maine Bees"
Matt Scott, Former Aquatic Biologist for the State of Maine



Matt Scott is a retired aquatic biologist who worked for the State of Maine for 38 years. He holds both bachelors and masters degrees from the University of Maine. Matt was co-founder of the Maine State Beekeepers Association (MSBA) and was president in 1976. He was awarded Beekeeper of the Year in 1986. He continually provides advice and bee lectures to many of Maine's chapter associations of the MSBA, University of Maine extension offices, and environmental groups. He owns a 135-acre farm in Belgrade where he maintains several colonies of honeybees. He clearly understands the connection and value of these important insects to Maine agriculture, associated wildlife, and the environment.



Queen bee surrounded by workers'



Hives in the snow

Admission is free, but contributions for the nature walks and presentations are greatly appreciated. Please reserve for any event by calling 207-293-2280 after June 15. Lunch is also available (\$10). Bearnstow is located at 84 Bearnstow Road in Mount Vernon. See www.bearnstow.org/contact.htm for directions.

Classic Farms Inc.

WORKING RANCH ADVENTURE

HORSE & CATTLE CO.

Hey City Slickers,
Want To Be A Real **BUCKEROO!!**
Don't Day Dream Anymore. Pack Your Bag &
GET OUT OF DODGE!!



- Rent horses by the hour, day, week or month.
- Group hay rides and carriage rentals for special occasions.
- Small cattle drives, over 400 acres.
- Nature and foliage rides.
- Pack trips, by appointment.
- Week long farm stays.

- Open pit beef roast, monthly.
- Country music by the "Duke".
- Real cowboy games.
- Training services, limited to the driving horse. Show, pleasure, competition.
- Morgan horse stallion services.
- Horse and prime beef sales.

For The Stressed Out Cowpokes, Come See Us Now!!

-AT-

Classic Farms Inc.
HORSE & CATTLE CO.

RT. 8, SMITHFIELD, MAINE
Mailing Address: RFD 2, Box 2870, Oakland, ME 04963

(207) 634-3409
Call or Write for Complete Information Package

A very interesting ad from the first season. For more go to page 1 for the lead story.

Join us for our 15th Anniversary

KINGFIELD POPS



Saturday, June 24, 2017
Gate opens at 4:30 PM at the Kennedy Farm • Kingfield, Maine

The Bangor Symphony Orchestra conducted by Lucas Richman
with guests Sultans of String
And featuring Ghost of Paul Revere
The Jason Spooner Band • Maine Youth Rock Orchestra
Lula Wiles • The Western Mountain Trash Can Band

Tickets \$20 until May 15
\$25 until gate opens,
\$30 at gate
17 and younger FREE

Valley Gas & Oil Company

Skowhegan Savings

UNITED INSURANCE
Shiretown Agency

Franklin Savings Bank

Poland Spring

TransCanada
In business to deliver

SUGARLOAF


Sprague & Curtis

Real Estate


spragueandcurtis.com

6 2 3 . 1 1 2 3

75 Western Ave. • Augusta, ME




NEW LISTING-WINTHROP — Beautifully maintained home in a great location. 2-3BR home w/in-law apartment in basement, large intown lot, LR fireplace & a cozy propane stove in the basement, full kitchen & BA in basement. Attach 2 car garage, glass sunroom w/hot tub to relax in. Stained glass windows throughout! #1311683 \$164,900




NEW LISTING-RICHMOND — Immaculate 3BR, 2BA Geothermal Ranch style home on 17.8+/- ac. Never pay for oil or propane again. Lrg open fields w/shooting range & wildlife galore! Beautiful 4 season sun rm overlooking backfield. Lrg kit w/center isl. Open LR & DR. Mud rm w/laundry. Att. 2 car garage, back deck & central air. Also has a Ranch style storage building. Home is like new! #1311549 \$295,000




NEW LISTING-CHINA — Nice 2 acre building lot with driveway cut in place. Wooded lot, east facing sunrise to set your new home. The lot has 200' of road frontage is 400'deep. Bring your building plans- no deed restrictions. Centrally located to both Augusta & Waterville, & China lakes region. #1311493 \$18,500




NEW LISTING-RANDOLPH — Great Investment Property! Two unit building is perfect for owner occupied. Newer boiler in basement, newer roof, nice landscaping and close to the River. Don't miss out on this one!! This building could easily be converted back to a single family home as well! #1311499 \$89,900




NEW LISTING-WINTHROP — Gracious ca1800 Cape Cod style home, beautiful setting in E. Winthrop. Modern updates incl kitchen w/cathedral ceiling/center bar, Viking gas range & slate counter. 1ST flr MBR w/BA & walk-in closet. Beautiful wood flrs in most rms. Lovely LR, library & office. Great 3 story barn. Charming patio & fire pit. 5 ac near lakes & easy drive to I-95. Enjoy this Historic home w/custom amenities! #1311422 \$295,000




NEW LISTING-CHESTERVILLE — Cape Cod style home w/much potential. First flr offers kitchen, LR, BA & DR. 2nd level offers 3 bedrooms. Home was never finished so here's your chance to complete to your taste. Owner occupant purchases only for the first 20 days on the market. #1311216 \$29,900



NEW LISTING-WEST GARDINER — Lovely home in popular West Gardiner. Offering 2-3BR, appliances kitchen and LR/DR w/oak hardwood floors. Attached breezeway & a one car garage. The grounds are beautiful with perennials, flowering trees, a small pond, 2 sheds & woods all the way to Cobbossee Stream. A great find! #1310915 \$159,000



NEW LISTING-AUGUSTA — Spacious two story New England style home in the heart of Augusta. Front porch, 3 bedrooms, 1.5 baths, & many rooms have hardwood floors. Detached garage. Do some work and build equity here! #1310650 \$45,000



NEW LISTING-WINDSOR — Immaculate 3BD/3BA home on 2.48 ac. Beautiful hardwood flooring throughout the eat-in kitchen, DR & LR. 1st flr BA w/laundry. Mudroom, massive 26x26 garage w/10' ceilings & 9' garage doors. Spacious MBR suite w/sitting area, walk-in closet & MBA. Room above garage could be finished, now used as game rm. Freshly painted interior. Fantastic location! #1310147 \$265,000



North Pond Association President's Letter

Dear residents of Mercer, Rome and Smithfield,

I am writing to introduce myself as the new president of North Pond Association and to inform you of NPA's continuing investments of passion, energy, time and money to protect North Pond and Little Pond. As a greenhorn following Rick Watson's ten years of excellent leadership, I know I have a lot to learn. But I also know that through NPA I have met dozens of smart, experienced people who care about our watershed. I am learning from them, and I vow to do my best to serve everyone who cares about our beautiful environment.

Besides a new president, NPA also has a new vice president, Kelly Marshall, and we have a new treasurer, Don Bushnell. Linda Rice remains our secretary and our ever vigilant Courtesy Boat Inspector and LakeSmart coordinator. No list of NPA VIPs would be complete without mentioning Jodie Mosher-Towle, our major grant writer, editor of this newsletter, creator of our unique Are Your Buff Enough program, defender of loons and rescuer of those in the water. I am lucky to be working with and learning from these fine folks.

As many of you know, the biggest news of 2016 was the survey. We are still working on the final report, but the bottom line is that we have discovered many more ways to improve our water quality.

Of course we will continue with the programs that exemplify our commitment to preserving the highest quality of life in our three towns. I'll be out on the lake with other Board members and volunteers conducting "Eyes on the Water" invasive plant

patrols. We'll be repeating the Boating Safety Course at the Grange on June 3, 2017. We'll maintain the dam which kept water levels up during last summer's drought. The Plants of North Pond book will be ready for the annual meeting. We'll invest heavily again in manning the boat ramp with Courtesy Boat Inspectors, and we'll have the porta-potty installed next to the kiosk. We'll participate in the loon count and protect loons, their nests and their young. Going back to the boat ramp for a moment, vandalism was a problem again in 2016. Please keep an eye on activity there, and don't hesitate to call the police when you see suspicious activity. Thank you Linda Rice and George Fowler for "replanting" the kiosk on

two occasions.

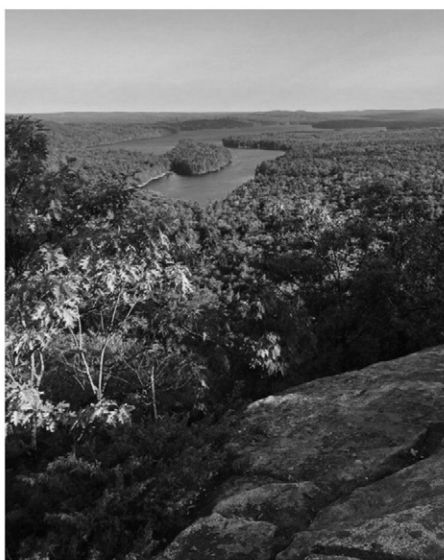
When I joined NPA six years ago, I had no idea how much time and energy was involved in protecting North and Little Ponds. Now, as president, I find it a bit overwhelming at times, just like life. But NPA members and the Board are a force to be reckoned with: Watch out milfoil! Watch out algae! Watch out run-off and erosion! The NPA is gearing up for another great year of protecting, preserving, and educating to benefit North Pond, Little Pond and all users thereof.

Thank you everyone for your support. I look forward to working with you.

Sincerely, Doug "Woody" Woodsum



The Best Part of Staying in the Belgrades



When it comes to the Belgrade Lakes there is plenty to do and see. Besides staying on the water while you are here and participating in water activities, the best part is coming to Belgrade Lakes Village.

Whether it's grabbing a donut in the morning at Day's Store, coming by boat for dinner at the Village Inn and Tavern, or stopping in at the Maine Made Store there is always something happening around town. Visiting with old friends and new the sense of community in the Village is like no where else. If you are looking to visit, rent, or buy in the Belgrade Lakes, make sure to check with your local real estate office to find out what's happening around town!

Original Artwork Designed by Nate Tremé

20th Annual
MIFF
Maine International Film Festival
July 14-23, 2017
miff.org

Colby Waterville Creates! MPN MAINE FILM CENTER

"The Golden Age is before us, not behind us"
....William Shakespeare

**Whether you are 55 or 85
Our mission is the same...
Grow and protect your family's
treasure for your "Golden Age"**

129 Silver St, Waterville, ME Phone: (207) 873-2200
www.goldenpondwealth.com
Securities offered through LPL Financial, Member FINRA/SIPC



Your own little island of

FUN

**LARGEST
SHOREMASTER
DISTRIBUTOR
in the
COUNTRY**

Improve your lake shore living experience with a **SHOREMASTER SWIM RAFT**. Kids and adults alike will enjoy years of fun and treasured memories.

We Cover The Waterfront.

SHOREMASTER

SWIM RAFTS

90" x 114" Poly Swim Raft – Poly Deck - Yellow or Gray	\$1,169
8'x8' Aluminum Swim Raft Cedar Deck	\$1,629
8'x8' Aluminum Swim Raft Aluminum Deck	\$2,059
8'x8' Aluminum Swim Raft White Aluminum	\$2,139
Rip Raft – Tan or Orange	\$879

Ladder sold separately

3 step pivot ladder	\$289
4 step pivot ladder	\$339
5 step pivot ladder	\$399
Nylon Rope Ladder (Rip Raft only)	\$57
2 step Rip Raft Ladder	\$215

Toll-free 1-866-HAMMOND

Hammond Lumber Company

Visit us online at
www.hammond-shoremaster.com
for a 82-page Product Planning
Guide & Price List.

AUBURN • BANGOR • BELGRADE • BOOTHBAY HARBOR • BRUNSWICK • DAMARISCOTTA
FAIRFIELD • FARMINGTON • GREENVILLE • PEMAQUID • PORTLAND • SKOWHEGAN • WILTON

Lakepoint

REAL ESTATE

207.495.3700

221 Main St.,
Belgrade Lakes, ME 04918

www.belgradelakepoint.com



NEW LISTING

GREAT POND, BELGRADE: Hoyt Island—200' lakefront. For power, choose propane, generator, or 7 solar panels. Includes dock and mooring and fantastic lake views. Serene Island Living. #1311905 **\$225,000**



NEW PRICE

LONG POND, BELGRADE: 98' Lakefront. Custom 3BR/3BA, stunning screen porch and 2 open decks. Lake views from each of 3 levels. Within walking distance to the Village. 1305315 **\$699,900**



NEW PRICE

LONG POND ACCESS, MT VERNON: 4BR/3BA, 8.95 acres. 800' shared waterfront. 2 horse stall barn. Lge deck, porch, shop and more. #1282731 **\$269,000**



NORTH POND, SMITHFIELD: 3BR/4BA, 127' waterfront. Year-round home with custom built kitchen, large stone fireplace and panoramic views from over sized porch. #1299846 **\$719,000**



GREAT POND, BELGRADE: 3BR/2.5BA main home. 2BR/1BA guest quarters above 2 car heated garage. Pvt sandy frontage, on 4.11 acres. #1310458 **\$895,000**



LITTLE NORTH POND, ROME: Open floorplan with lots of windows, stone hearth, 2 full baths, lge master BR, home comes furnished. #1269882 **\$245,000**



LONG POND ACCESS, BELGRADE: 2BR, 2BA, well maintained Modular. Short walk to lake access or Village. New 1 car garage. Nice setting. #1287679 **\$89,000**



SALMON LAKE, BELGRADE: 3BR/2.5BA, 200'+/- lakefront, 2 car gar, Master 1297268 **\$425,000**



AUGUSTA: NEW CONSTRUCTION to be completed Summer of 2017. Beautiful area. 3BR/2BA, full basement or two car garage, your choice. #1301919 **\$179,000**

GRANITE HILL ESTATES

Part of:
MaineGeneral Health



Retire your way. Today!

In a community that cares.

Now's the time to join the family at **Granite Hill Estates**, central Maine's premiere continuing care retirement community and part of **MaineGeneral Health**. Call 207-626-7786 or toll free 1-888-321-1119 today schedule a tour. Offering an impressive menu of amenities:

- Spacious cottage homes and apartments
- Elegant full-service dining plan
- Maintenance and housekeeping services
- Scheduled courtesy transportation
- Social, cultural and educational programs
- Indoor swimming pool complete with hot tub
- Cozy reading room, library and bank
- Attractive game, billiard, and meeting rooms
- Fitness center with an on-site fitness coordinator
- Convenient hair salon, massage spa and meditation room
- Wooded walking trails throughout our 135 acre campus

Awarded
Highest Honors
for
**Resident
Satisfaction**

Holleran National
Senior Living Survey



email: info@granitehillestates.com

60 Balsam Drive, Hallowell, ME 04347

207-626-7786

1-888-321-1119

granitehillestates.com

What goes up must come down?

Avoid fluctuating interest rates.

Lock in a low fixed rate
mortgage today.

And you could save
\$500 off closing costs.

Apply now at
skowhegansavings.com
or call **1.800.303.9511**



*Offer good for new mortgages from May 1st to July 31st, 2017. Not applicable for Maine State Housing. Cannot be combined with any other offer. All loans are subject to credit approval.



**Skowhegan
Savings** FDIC

Straight Talk. Fair Deals.