

Summertime in the Belgrades



... Serving the Central Maine Lakes & Kennebec River Corridor

—A Cider Mill Press Publication—

VOLUME 19, NUMBER 2

Let the Leisure Seize Ya

by Esther J. Perne



The season of leisure is here! Summer enrichment activities, opportunities and options are setting in. Every day of the week there will be free outdoor music floating through the air. Every weekend there will be an art or photography or craft exhibit, also usually free. Most evenings there will be theater performances. Most any time there will be jam sessions and poetry readings and classes and workshops on arts and crafts and creativity. And always there will be museums and libraries and historic sites and studios open longer hours or summer-only hours with a lot of special exhibits during this season of the year.

This summer grow rich! Put some culture in the mind bank, some classes, some craft know-how. Put some music in the memories, some artwork, some theater, some living history.



Continued on page 2

Mid-Maine Marine Inc.
885 Kennedy Memorial Drive, Oakland, ME 04963
1/2 Mile West of Exit 127 off I-95 • 1-800-649-2628
www.midmainmarine.com

HARRIS
IN STOCK
16, 18, 22, & 24 FT

PLAY FISH SKI RELAX

Join us...and help
protect our lakes!

Belgrade Lakes Association
137 Main Street, Belgrade Lakes, Maine 04918
207-512-5150 • www.belgradelakesassociation.org

Hamlin's Marine

290 West River Road, Waterville • 207-872-5660
581 Main Road North, Hampden • 207-907-4385
www.hamlinmarine.com

YAMAHA



Continued from page 1



Invest in a small way in attending everything that's no admission, in admiring in passing a roadside artist, a solo sidewalk entertainer, a birder with binoculars standing silently across from a picturesque marshland. Invest in a large way with a season-long theater or museum pass, a music or film festival pass, a ticket to special seating or VIP benefits. Thrive either way in the balance of summer's natural settings and the season's unique artistic and cultural opportunities.

This summer get involved in enrichment. Volunteer, sponsor, fundraise, promote. Attend a dance workshop, join a rural stage production. This summer share. Take the children, the guests, even the dog to an outdoor concert. This summer venture out to an event or presentation in a neighboring town, a new-to-you waterfront. This summer let the leisure of the season set in.



Bearnstow
On Parker Pond, Mount Vernon Maine

A Natural History Week at Bearnstow

June 19-22 and 30, 2017

Program for Sunday, June 30

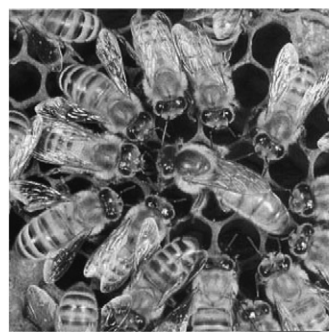
EVENING: 7:30 P.M., BEARNSTOW MAIN HALL

"Climate Change and Habitat Fragmentation of Maine Bees"

Matt Scott, Former Aquatic Biologist for the State of Maine



Matt Scott is a retired aquatic biologist who worked for the State of Maine for 38 years. He holds both bachelors and masters degrees from the University of Maine. Matt was co-founder of the Maine State Beekeepers Association (MSBA) and was president in 1976. He was awarded Beekeeper of the Year in 1986. He continually provides advice and bee lectures to many of Maine's chapter associations of the MSBA, University of Maine extension offices, and environmental groups. He owns a 135-acre farm in Belgrade where he maintains several colonies of honeybees. He clearly understands the connection and value of these important insects to Maine agriculture, associated wildlife, and the environment.



Queen bee surrounded by workers



Hives in the snow

Admission is free, but contributions for the nature walks and presentations are greatly appreciated. Please reserve for any event by calling 207-293-2280 after June 15. Lunch is also available (\$10). Bearnstow is located at 84 Bearnstow Road in Mount Vernon. See www.bearnstow.org/contact.htm for directions.



**Great family care, as unique
as you are—how convenient.**

With locations in Waterville, Oakland, North Anson, Unity and Madison, **we're right down the street** from where you work or live. And with personal attention for every patient, not to mention a direct connection to the world-class specialists of EMHS, it's no wonder more of your neighbors are turning to Inland Family Care.

Welcoming new patients today!

Call our Provider Finder Service at 800-914-1409
or email us at inlandproviderfinder@emhs.org.



Inland Family Care

A Department of Inland Hospital

EMHS MEMBER



inlandhospital.org

Offices in Waterville, Oakland, North Anson, Unity and Madison



**MICHAEL
BREAUULT**

Creative
solutions for
all your Mac needs

**Macintosh and iOS
support, based in
Western Maine,
working onsite throughout Maine**



If you have Macs, iOS devices, software or network problems, websites you'd like built, or any ideas you would like to implement using Macintosh computers, give me a call and we can discuss if I can help...

207-578-0226 • www.michaelbreault.net



Table of Contents

The Enrichment Invasion..... 1-2

Table of Contents..... 3

Hikes and History 3

"The Luckiest Boy" Games With the Gang 4

"Take It Outside" with Pete Kallin..... 5

Directory of Where, When, What Town by Town..... 6-7

Dam Keeper's Report..... 7

Calendar of Events: Awesome Activities Start the Season..... 8-9

Kennebec Corridor Map: Along the Mighty River..... 9

Along the Corridor News..... 9

Underground Railroad History Walk..... 9

Belgrades Watershed Map..... 10-11

Upcoming Events Throughout the Summer..... 12

Nature Day Camp..... 12

Conservation Too: Land Invasives Are Taking Over..... 13

The Stranger in the Woods..... 13

Accommodations: Tarry A While..... 14

Notebook: Announcements, Notes, News..... 14

Dining Suggestions: Fine Food to Picnic Fare..... 15

Business Directory: The Best Businesses and Services Guide 16-17

Association Directory: A Group For Every Reason 17

Norlands 18-19

Hikes, History and Heroes



Back to Great Pond. It’s usually around Memorial Day when we return for the summer. As always, I’m drawn to the little cemetery on Watson Pond Road -- to visit Ezra Willard’s grave. My first encounter with Ezra was in 2007. My husband and I were hiking in the Kennebec Highlands --a three-mile loop -- and somehow wandered off trail. Eventually we found a path and reached the parking lot – but it wasn’t the lot where our car was parked. As we headed down the road we came upon a little graveyard tucked up against the woods. A shady, undisturbed spot to have our sandwiches. So we ate our lunch among the souls from the 1800s.

The stones tell stories, though many of the etchings are wearing away and impossible to read. But there in the middle of the serene little hill, a small American flag was waving, next to a stone that says,

Ezra Willard. Died 1851. Age 90.
A Soldier of the Revolution

This peaceful little place had an effect on me, and every year I make this little pilgrimage on Memorial Day. For me, it's a time to remember all the Ezras who risked their young lives to make our nation a reality. It’s a time to think about war. And it’s easy to get a bit teary-eyed and feel melancholy. But Memorial Day is a time to reflect, so I visit Rome’s Revolutionary War soldier, and I tell him, “You were there fighting for our independence. We honor you on Memorial Day and celebrate again, lighting up the skies with fireworks, on the 4th of July.

Thank you for your Service Ezra.”

Note: Rome, ME sent 103 to the War of Rebellion. 40 died. Ezra was 90 years old when he died. Next to Ezra in the cemetery is Elizabeth, who died at age 10; and further down is Jonathon Trask’s beloved wife, a woman in her early 20s.

Submitted by Kathleen Overfield

Summertime in the Belgrades

--A Cider Mill Press Publication--
PO Box 290, Belgrade Lakes, ME 04918
Editor: Esther J. Perne, 207-495-3777 • ebelnews@earthlink.net
Advertising Director: Erle Morse, 207-495-3777 • ebelnews@earthlink.net
Layout Design: Michael Breault, 207-578-0226 • mo.breault@gmail.com
Webmaster : Gregor Smith • gregor@roadrunner.com
www.sumbelnews.com

This publication is copyrighted ©MMXVII, Cider Mill Press Publications, All Rights Reserved.

CSS Cayer
Security Services, Inc.

COMMERCIAL & RESIDENTIAL
Burglary & Fire Alarm Systems
Video Surveillance & CCTV
Access Control
24 Hour UL Listed Monitoring Service

453-9177
www.cayersecurity.com

NORTH BAY ESTATES
ROUTE 8 • NORTH BELGRADE

~ FOR SALE ~

Custom Built Homes
by Craig’s Carpentry
1 & 2 acre lots
with lake views from
Great Pond overlook
Craig Alexander
cell (207) 649-3749 • crgsnbe@yahoo.com

ANNUAL RAFFLE
Buy a ticket and help protect our lakes!

Protect and Preserve

EST. B.L.A. 1908

Belgrade Lakes Association
137 Main Street, Belgrade Lakes, Maine 04918
207-512-5150 • www.belgradelakesassociation.org



—The Luckiest Boy—

Kick the Can or Put Out the Tire

by Rod Johnson

Which is it going to be tonight? That's the question that we few village kids would toss around when it was time to go in our respective homes for supper, knowing that we would regather after. In the 1950s village families all ate at pretty much 5 p.m. sharp, and we kids were expected to be at the table with washed hands and combed hair. The usual question, "got any homework" came from mother as we gulped down our food and asked to be excused. After the usual minor interrogation as to what the day was like and us saying "we had no homework," we'd get the o.k. to get up then bolt for the door. Regardless of time of year or weather conditions, some regathering of 4 to 6 village kids would take place and we'd decide on what to do for an hour or two before our parents' 7 p.m. curfew arrived. Some of our nightly indulgences included riding bikes, skating, building snow forts, playing baseball on the old hotel golf course or ping pong in the cellar. When we needed a change someone would suggest playing *kick the can* or *put out the tire*.

In pondering this story and my memories of the above list, I realize that sometimes we weren't exactly goodie two-shoes kids and did sometimes add a little extra pizzazz to what we called fun. The bike riding for instance, included riding bikes through a pile of burning leaves beside the road. In those days, burning leaves was not only acceptable but expected, it's what you did with leaves, period. Going in the house with black sooty pants was commonplace in the fall season, complete with a verbal scolding for riding through the fire. Building snow forts became competitive for a few winters. As the snow banks grew from the plows winging back during large storms, we built multi-room caves in the banks. The mischievous part came from making snow balls to stockpile in the caves, only to pepper vehicles as they passed by on occasion, then hiding deep in

the caves if the driver stopped to give us hell. Kick the can was pretty straight forward as I recall, and it was really for the younger years. As we aged into young teens a fun/devious game we called "putting out the tire" became the craze. In those days, new tires were wrapped in brown paper. We wrapped an old tire and placed it along the roadside after dark, with enough showing that drivers would spot it in their head lights. Probably one in ten drivers would pull over to pick up what they thought was a new tire that had fallen off a delivery truck. Just as the driver bent over to pick up the tire, we would pull the 50-foot rope we had tied to it while hiding in the nearby woods. The vocal response from the duped driver was interesting and may have been where we learned many new swear words. We had a couple chase us into the woods but we were never caught. One guy shot his shotgun into the air and scared the daylights out of us and we quit that gig for a few weeks.

I hope this little story may bring back some memories for you—especially if you were a little on the naughty side!



...Continued from page 5



My nine-pound pike caught on a big streamer fly.

salmon have headed for deeper, cooler water while the bass, sunfish, and landlocked alewives have headed for shallower, warmer water. The pike have finished their early spring spawning and are hungrily chasing whatever fish they can catch. I have caught several on my 9-weight fly-rod, which is a real battle. Teenager Joe Ardito recently landed a nice nine-pound pike while fishing with his dad, Mark, behind their house on lower Long Pond, across from BRCA's Fogg Island Preserve. That is the kind of experience that creates strong father-son bonds and creates memories that will last a lifetime.

While I was fishing on Long Pond recently a Bald Eagle flew overhead toward a nearby wetland. Suddenly a Red-wing Blackbird flew straight at the eagle trying to chase it away from its nesting area. The little bird landed right on the eagle's back, right between the shoulder blades! The eagle dipped and turned to shed the blackbird. The blackbird once again flew above the eagle and landed on its back again, successfully driving the eagle off. It happened so quickly I couldn't get a picture but I now have a permanent memory of the event. It was more exciting than watching Maverick drive off the bogeys in the movie, Top Gun.

This area offers some great outdoor recreation, whether you like to hike, bike, birdwatch, fish, sail, or paddle a canoe or kayak. Pick up a map of the local trails at Day's Store or from the BRCA at the Maine Lakes Resource Center (MLRC). Get out and explore! Sign your kids up to learn to sail through the Great Pond Yacht Club (<https://greatpondyachtclub.com/junior-sailing-program/>). And make sure you take a kid along on your next outdoor adventure.



Experience the Legend



New England's only
distiller of Absinthe

Maine's Best Spirit, 2016
—Down East Magazine

152 Fairfield Street, Oakland, ME 04963
www.treespiritsofmaine.com



— Take It Outside —

Summer seems to be in full swing, with long lines at Day’s Store and more out-of-state license plates than Maine plates on the cars parked in the village. The BRCA Courtesy Boat Inspectors (CBIs) have been on duty for over a week already at the seven public boat launches in the Belgrades, doing their part to prevent the spread of invasive plants into our lakes. Last year, these CBIs inspected 13,000 boats between Memorial Day and Labor Day and made multiple “saves” of invasives entering our lakes.

This past week has seen a mixture of weather, some hot, some cool, some wind and off and on rain and thunderstorms. I have gotten a little bit of hiking in and have been rewarded with some beautiful flowers such as trillium and lady slippers. The BRCA Stewardship Committee began another project at their Fogg Island Preserve on lower Long Pond in Mount Vernon. Toni Pied, Roy Bouchard, Brian Alexander and I ferried four loads of hemlock planks from the Castle Island boat launch to Cedar Beach on Fogg Island where the lumber will be used to build a Maine DEP-permitted bog bridge through a cedar bog to extend a trail to the island. Please contact Toni Pied at the BRCA office (495-6039) if you would like to volunteer to help construct this project later this month.

As the weather has warmed, the trout and

Continued on page 4...

Take it Outside!

by Pete Kallin



Lady slipper on The Mountain



Trillium on Mount Phillip.



Brian Alexander, Toni Pied, and Roy Bouchard at Fogg Island.



Joe Ardito with a nine-pound pike from Long Pond.



Amy Gray: 478-8921



Dave Barnard: 441-8486



Hoa Hoang: 485-1485



Erica O'Connor: 485-0277



George O'Connor: 458-1674



Tanja McCarthy: 660-5427



Sarah Allarie: 242-9842



Remy Henry: 242-0450



Patrice Lessard: 314-5976



Pam Armour: 314-7445



Merline Douglas: 485-0138



Loretta Burk: 458-0910



Lisa Hicks: 592-5374

FOR SALE

HOANG

REALTY

623-0623



Gail Dostie: 242-2017



Heidi Witham: 465-5764



Karen Ramsay: 441-8186



Calendar Directory

TOWN BY TOWN...

GREAT VISITS, AWESOME OUTINGS – ART, MUSIC, CULTURE, HISTORY, RECREATION, FARMERS' MARKETS, TRAILS, SCENIC SITES, AND MORE...

AUGUSTA

- **Viles Arboretum**, 224 acres with 6 miles of year round walking trails, including art and sculpture trail, open dawn to dusk, Visitor Center open Monday-Friday, 9 am-4 pm, admission free, 626-7989, www.vilesarboretum.org, 153 Hospital Street
- **Farmers' Market at the Arboretum**, indoors, Friday 1-5 pm
- **Art in the Capitol**, Maine Arts Commission monthly self-guided exhibits in State House hallways (Mon-Fri 8 am-5 pm), Blaine House (call for times), and Maine Arts Commission Office (8:30am-4:30 pm), 287-6746, mainearts.maine.gov
- **Children's Discovery Museum**, CDM, hands-on displays, activities, Tuesday-Thursday 10 am-4 pm, Friday-Saturday 10 am-5 pm, Sunday 11 am-4 pm, admission, 622-2209, www.childrensdiscoverymuseum.org, 171 Capitol Street
- **Danforth Gallery**, Jewett Hall, art exhibits, UMA-1234, www.uma.edu
- **Governor's Mansion**, 1830 Blaine House, Tuesday-Thursday 2-4 pm, 287-2121, www.blainehouse.org, State Street
- **Holocaust and Human Rights Center of Maine**, Michael Klahr Center, Monday-Friday 8 am-4 pm, 621-3530, www.hhrc.uma.edu, University of Maine at Augusta, off Route 27
- **Kennebec Historical Society**, Wednesday-Friday 10 am-2 pm, 622-7718, www.kennebechistorical.org, 107 Winthrop Street
- **Maine State Museum**, Tuesday-Friday 9 am-5 pm, Saturday 10 am-4 pm, \$2 adults, \$1 ages 6-18, 287-2301, www.maine.statemuseum.org
- **Maine State House**, Hall of Flags, House and Senate Rooms, Klir Beck dioramas, Monday-Friday 8 am-5 pm, book tours at Maine State Museum, walk-ins welcome 9 am-1 pm, 287-5600, www.maine.gov, State Street
- **Maine State Library**, Monday-Saturday opens 9 am, 287-5600, www.maine.gov/msl/, State Street
- **Museum in the Streets**, walking/history tour, www.augusta-maine.gov, Water Street/downtown.
- **Old Fort Western**, 1754 fort, house, store, 1-4 pm daily, admission \$6, 4-14 years \$4, 626-2385, www.oldfortwestern.org, Cony Street
- **Riverfront Park**, boat launch, Greenway Trail, playground, eastside Kennebec River
- **Kennebec River Rail Trailhead**, Maine State Housing Authority parking lot, 623-8162, www.krrt.org, Water Street
- **University of Maine at Augusta Fitness Trail**, 2 miles of wooded trails, near Civic Center, Route 27
- **Farmers' Market at Mill Park**, Tuesday 2-6 pm, 626-2305, www.farmersmarketmillpark.org/, North Water Street
- **Farmers' Market at Turnpike Mall**, 549-5112, Wednesday and Saturday 10 am-1 pm, Western Avenue

BELGRADE LAKES

- **Belgrade Lakes Market**, 320-8303, careybor@yahoo.com, Sunday 8 am-1 pm, Main Street
- **Great Pond Mailboat**, 592-1537, Monday-Saturday 10 am,

Post Office, Main St.

- **The Belgrade Community Center for All Seasons**, pool and lakefront, gym, playground, picnic area, rec programs, 495-3481, www.belgrademaine.com, 1 Center Drive
- **Union Church Coffee House**, check for schedule, 7:30 pm, \$5, 495-3599, www.unionchurchmaine.org, Main Street
- **Belgrade Historical Society**, 495-2973, belgradehistoricalsociety.org
- **Belgrade Lakes Market**, Sun 8 am-1 pm, Main Street
- **Peninsula Park on Long Pond**, picnic tables, Main Street
- **Maine Lakes Resource Center**, 512-5150, www.maine.lakesresourcecenter.org, 137 Main Street

FAIRFIELD

- **Fairfield Historical Society**, 1890 Cotton-Smith History House, every Tuesday 9 am-12 noon and 1-4 pm and second Saturday of month, 453-2998, www.fairfieldmehistoricalociety.net, 42 High Street
- **Farmers' Market**, 948-5724, Wednesday 2-6 pm, Saturday 9:30 am-1:30 pm, Nazarene Church parking lot, 81 Main Street

FARMINGTON

- **Farmington Historical Society, Titcomb House Museum**, 778-4275, Wednesday and Saturday, 11 am-2 pm, July-August, www.farmingtonhistory.org, 118 Academy Street
- **Nordica Homestead Museum**, opera singer Lillian Nordica costumes, jewelry, mementos, 778-2042, Tuesday-Saturday 10 am-12 noon and 1-5 pm, Sunday 1-5 pm, www.lilliannordica.com, 116 Nordica Lane, Holley Road
- **Contra Dance**, 491-9928, www.starleft.org 2nd Saturday of the month, all welcome, 6:30-7:30 pm family dance, 8-11 pm regular dance, admission, Grange Hall, Bridge Street, Route 43, West Farmington
- **University of Maine campus and Arboretum**, four walking tours with informal guide pamphlet to campus trees, 581-1541, www.umaine.edu/arboretum/, downtown
- **Farmers' Market**, 778-6602, Friday 9 am-2 pm, Better Living Center parking lot, Front Street; Saturday 8 am-12 noon, Main Street
- **Meetinghouse Park and Gazebo**, weekly concerts throughout summer, downtown
- **Fairgrounds**, events throughout summer, Franklin County Fair in September, High Street

GARDINER

- **Artdogs and Circling the Square Fine Art Press**, Friday 1-5 pm, Saturday 10 am-4 pm, 582-6600, www.theartdogs.com, 275-277 Water Street
- **Johnson Hall Performing Arts Center**, 582-7144, www.johnsonhall.org 280 Water Street
- **Monkitree**, art exhibits, 512-4679, www.monkitree.com, Tuesday-Friday 10 am-6 pm, Saturday 12-6 pm, 263 Water Street
- **SpinOff Studio**, 588-7297, spinoffstudio.org, Monday-Friday 8:30 am-4:30 pm, 405 Water Street
- **Farmers' Market**, 512-8022, www.gardinerfarmersmarket.org, Wednesday 2-6 pm, rain or shine, The Common
- **Kennebec River Rail Trail**, 623-8162, www.krrt.org, access near Gardiner/Randolph Bridge, 6.5 miles to Augusta
- **Waterfront Park**, picnicking, events throughout summer, Kennebec River

GREENE

- **Araxine Wilkins Sawyer Memorial**, free entertainment programs, monthly - Friday 2 and 7 pm, 946-5311, www.sawyer-foundation.com, 371 Sawyer Road, off Route 202

HALLOWELL

- **Harlow Gallery**, Kennebec Valley Art Association, 622-3813, www.harlowgallery.org Wed- Sat, 12-6 pm, 160 Water Street
- **Gaslight Theater**, 626-3698, www.gaslighttheater.org City Hall, 1 Winthrop Street
- **Museum in the Streets**, history/walking tour, www.historichallowell.org, downtown
- **Farmers' Market**, 622-1350, Sun 3-6 pm, Water Street
- **Vaughn Woods and Homestead**, 166 acre park/trails/homestead, Middle Street
- **Kennebec River Rail Trail**, www.krrt.org, to Augusta, Farmingdale/Gardiner, Water Street
- **Waterfront Park**, deck/walkway on Kennebec River, North Water Street

HINCKLEY

- **L.C. Bates Museum at Good Will-Hinckley School**, early 20th century natural history and cultural exhibits, nature trails and camps, adults \$3, up to 17 years \$1, 238-4250, www.gwh.org Wednesday-Saturday 10 am-4:30 pm, Sunday 1-4:30 pm, Route 201

KINGFIELD

- **Ski Museum of Maine**, 265-2023, www.skimusuemofmaine.org, 256 Main Street
- **Stanley Museum**, 265-2729, www.stanleymuseum.org, memorabilia/displays on photographs, violins and Stanley Steamers, Tuesday-Sunday 1-4 pm, 40 School Street

LIVERMORE

- **Washburn-Norlands Living History Center**, 18th-19th century mansion/farmstead/schoolhouse, library, chapel, 897-4366, www.norlands.org, admission, living history tours Tuesday and Thursday 1-4 pm, 290 Norlands Road

MADISON

- **Lakewood Theater**, Maine's Summer Theater, Young Performers Camp, 474-7176, www.lakewoodtheater.org, Route 201
- **Skowhegan School of Painting and Sculpture**, 474-9345, www.skowheganart.org, summer evening artists lecture series, East Madison Road

MONMOUTH

- **Monmouth Museum**, local and regional Maine history, Wednesday-Sunday 1-4 pm, 933-2287, www.monmouthmuseum-minc.org, 751 Main Street
- **The Theater At Monmouth**, The Shakespeare Theater of Maine, Cumston Hall, 933-9999, www.theateratmonmouth.org, Main Street

MOUNT VERNON

- **D.E.W Animal Kingdom**, Zoo, 293-2837, 918 Pond Rd, Route 41

NEW PORTLAND

- **Nowetah's American Indian Museum and Craft Shop**, 628-4981, www.nowetahs.webs.com/, daily 10 am-5 pm, free,



Elliot B. Thayer, PLS, PE
Andrew Dunbar, PLS, LPF, LSE
RESIDENTIAL & COMMERCIAL
SITE DESIGN
STATE & LOCAL
PERMIT APPLICATIONS
PREPARED & PRESENTED
17 Hasson Street
Farmingdale, ME 04344
582-7762
www.thayereng.com



MOSQUITO BANDITOS
207-613-5656

Protect your children and pets from:

Zika, West Nile Virus, Encephalitis, Heart Worms
Anaplasmosis, Lyme Disease, Powassan Virus

ENVIRO FRIENDLY TICK, BLACK FLY & MOSQUITO CONTROL
www.mosquitobanditos-maine.com

PAUL HANNA'S PLUMBING



207-495-3805

New Homes and Remodels ~ Camps
Water and Sewer Pumps ~ Water Filtration
Paul Hanna, Licensed Master Plumber



628-4981, 2 Colegrove Road, Route 27

- **Wire Bridge**, 1864, probably only wire suspension bridge in U.S., off Route 27

NEW SHARON

- **Farmers' Market**, Saturday 9 am-1 pm, Douin's Market, 491-9025, 150 Mercer Road, Routes 2/27
- **New Sharon Historical Society**, Saturday 1-3, 778-4167, Routes 2/27

NORRIDGEWOCK

- **Norridgewock Historical Society Museum**, 1838 building, Saturday 10 am-1 pm, 634-5032, www.norridgewockmuseum.com, Mercer Road, Route 2
- **Oosoola Park**, picnic area, great playground, boat launch, on Kennebec River, Route 8

OAKLAND

- **Macartney House Museum, Oakland Area Historical Society**, 465-7549, Wednesday 1:30-4:30 pm, 1815 home with antique furnishings and Oakland artifacts, 25 Main Street
- **Town Parks**, playground, picnic tables, swimming area, boat launch area, Belgrade Road on Lake Messalonskee and McGrath Pond Road on McGrath Lake
- **Farmer's Market**, Friday 2-6 pm, 465-3094, Pine Acres Parking Lot, 895 Kennedy Memorial Drive

READFIELD

- **Readfield Historical Society and Museum** in 1853 school-house, 685-4662, www.readfieldhistorical.org, Thursday and Saturday 10 am-2 pm or by appointment, Route 17, Readfield Depot

ROME

- **Mt. Philip Grange**, suppers 3rd Sat of month, 4:30-6 pm, all you can eat beans, cornbread, rolls, chop suey, pies, Routes 135/225
- **Trails**: Mount Philip, Route 225; The Mountain, Route 27; French's Mountain and Kennebec Highlands, Watson Pond Road; for information call 495-6039 or visit www.belgradelakes.org; maps available at BRCA, 137 Main Street, Belgrade Lakes

SIDNEY

- **New England Music Camp**, concerts free and open to the public, Bowl-in-the-Pines on Lake Messalonskee, 465-3025, www.nemusiccamp.com, 8 Goldenrod Lane, Route 23
- **Sidney Historical Society**, 724-8032, www.sidneyhistoricalociety.org, 2986 Middle Road
- **Silver Spur Riding Club**, horse shows, River Road, Route 104

SKOWHEGAN

- **Margaret Chase Smith Library**, residence, home, museum exhibits, 474-7133, www.mcslibrary.org, free, Monday-Friday, 10 am-4 pm, 54 Norridgewock Ave.
- **History House Museum**, 1800s local history and culture, heirloom gardens, free, Tuesday-Saturday, 10 am-4 pm, 474-6632, www.skowheganhistoryhouse.org, 66 Elm Street
- **Fairgrounds**, weekly horse shows/competitions, free public events, covered arena, Skowhegan State Fair in August, 474-3621, Madison Avenue, Route 201
- **Farmers' Market**, Wednesday 3-6 pm, Saturday 9 am-1 pm,

weekly entertainment, 938-3906, Somerset Gristmill parking lot, downtown

SMITHFIELD

- **Fairview Grange**, 362-2791, Route 8
- **Smithfield History Society "The Groves House,"** 634-4392, 21 Lakeview Drive
- **Sunbeam Roller Rink**, 362-4951, 830 Village Rd, Route 8
- **Sunset Camps**, public beach, 362-2611, www.sunsetcamps.com, 834 Village Road, Route 8

UNITY

- **Unity College Centre for the Performing Arts**, folk genre music, 568-3147, www.unitymaine.org, 42 Depot Street

WATERVILLE

- **Aqua City Actor's Theatre (ACAT)**, 873-7000, www.acattheatre.org. Waterville Opera House Studio Theater, Main Street
- **Museum in the Streets**, downtown history/walking tour, www.themuseuminthestreets.com/waterville.htm
- **Head of Falls Park/Two Cent Bridge**, historic foot bridge over Kennebec River connecting Waterville and Winslow, Front Street
- **Common Street Arts**, 872-2787, www.commonstreetarts.org, Wednesday-Saturday 12-6 pm, 16 Common Street
- **Colby College Museum of Art**, 859-5600, www.colby.edu/museum/ Tuesday-Saturday 10 am-5 pm, Sunday 12-5 pm, free admission, Colby College Campus, Mayflower Hill
- **Colby College Special Collections**, Miller Library, Monday-Friday 10 am-12 noon and 1-4 pm, free admission
- **Thomas College Art Gallery**, 180 West River Road
- **Waterville Historical Society and Redington Museum**, 1814 home and pharmacy, 872-9439, www.redingtonmuseum.org. Tuesday-Saturday tours at 10 and 11 am, 1 and 2 pm, 62 Silver Street
- **Waterville Opera House**, 873-7000, www.operahouse.com, 93 Main Street
- **Farmers' Market**, Thursday 2-6 pm, 680-2055, www.watervillefarmersmarket.org,

WAYNE

- **Farmers' Market**, 685-4657, <http://waynefarmersmarket.weebly.com>, Saturday 9 am-noon, Town Green, at the Mill Pond, Main Street

WILTON

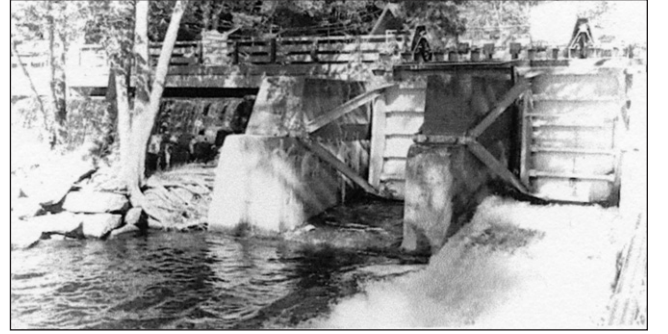
- **Wilton Farm & Home Museum**, 645-2091, 645-4578, www.thewiltonfarmandhomemuseum.org, Saturday 1-4 pm or by appointment, 10 Canal Street

WINSLOW

- **Fort Halifax on the Kennebec River**, historic fort tower, park, Route 201

WINTHROP

- **Norcross Park**, playground, picnic site, boat launch on Maranacook Lake
- **Farmers' Market**, 446-2899, Tuesday and Saturday 9 am-1 pm, town office parking lot, 17 Highland Avenue



The Dams Keeper Report

We're starting the unofficial beginning of Summer with our ponds in great shape. Great Pond is presently at 2.76" above full pond (i.e. the water is 2.76" deep as it flows over the Village stone spillway) with Gate 1 opened just 9". We're still trying to move the 2" of rain we've received in the past week downstream! As the long range forecast is predicting another dry summer, the objective is to begin the summer with both Great and Long Ponds at 3" above full pond— just like last year!

Long Pond at the Wings Mill Dam is 3.72" above full pond with both gates now completely closed. We are trying to keep as much water in reserve as we can without flooding out the loon nests and your docks!

Enjoy your summer! We've been waiting long enough for it!



Dick

Dick Greenan

Secretary, Belgrade Lakes Watershed Dams Committee



Dick and Marcia Cylik Reenactors with 3rd ME Regiment Company A in front of Meeting House at Norlands. See page 18 for more.

622-6353

Cut to order
in lengths from 14" to 23"

Green Certified Wood, Seasoned, & Ash
Cut, Split & Delivered

853 Civic Center Drive, Augusta, ME 04330

Changes?
Updates?

New contact information?
Please let us know...

mo.breault@gmail.com
or ebelnews@earthlink.net

DARE TO COMPARE

Best Prices on Inside,
Outside Boat Storage,
Shrinkwrapping &
Winterization

Craig Pooler
Cell 207-314-3287 • Office 207-495-3421
Email: belgradeboatstorage1@yahoo.com
www.BelgradeBoatStorage.com



— Calendar —

Wednesday 6/14 through Sunday 6/18 – Blistered Fingers Family Bluegrass Music Festival, a dozen great bands, giant tent, plenty of parking, food, camping areas, children 16 and under free with adult, Gospel Sing & Jam on Sunday, www.blisteredfingers.com, 873-6539, Fairgrounds, Litchfield.

Wednesday 6/14 through Saturday 6/17 – "Some Sweet Day," 474-7176, Lakewood Theater, Route 201, Madison.

Friday 6/16 through Sunday 6/18 - Trek Across Maine, sponsored by the American Lung Association, 624-0306, Bethel to Belfast with overnights at the University of Maine at Farmington and Colby College in Waterville; 2-day option 6/17-6/18 Waterville-Belfast.

Friday 6/16 through Sunday 6/18 - Maine Horse Association Downeast Horse Show, public welcome, covered arena, concessions, free admission, Skowhegan Fairgrounds, Madison Avenue, Skowhegan.

Friday 6/16 and Saturday 6/17 – "As You Like It," performed by the Recycled Shakespeare Company community theater, farce/slapstick, free admission, family friendly, free admission, refreshments will be sold, Friday - noon, Coburn Park, Skowhegan; Saturday - 7 pm, 314-8607, United Church of Christ, Eustis Parkway, Waterville.

Friday 6/16 through Sunday 6/18 – "Noises Off," a hilarious farce, \$12 adults, \$10 students and seniors, 7:30 pm Friday and Saturday, 2 pm Sunday, 626-3698, Gaslight Theater, Hallowell City Hall, Winthrop Street, Hallowell.

Friday 6/16 - History Walk focusing on the Underground Railroad in Metcalf Neighborhood, Winthrop, 10 am-12 noon, free, 441-9184, meet in parking lot behind Congregational Church, Main Street, Winthrop.

Friday 6/16 - Erica Brown and the Bluegrass Connection, free admission, 2 and 7 pm, 946-5311, The Araxine Wilkins Sawyer Memorial, 371 Sawyer Road, Greene.

Friday 6/16 – The Bob JRS (classic rock), free Waterfront Concert, 7:30 pm, followed by fireworks, 582-7144, Waterfront Park, Gardiner.

Friday 6/16 through Sunday 6/18 - "Exit Laughing," 7:30 pm Fri and Sat, 2 pm Sun, 873-7000, Waterville Opera House, 93 Main Street, Waterville.

Saturday 6/17 and Sunday 6/18 - The 6th Rally for Norlands, reenactment, encampment, family activities, music, food, battles, pig roast and gala barn dance on Saturday night, www.norlands.org, 897-4366, Washburn-Norlands Living History Center, 290 Norlands Road, Livermore.

Saturday 6/17 - PFBF CPA's "Run the Numbers" 5K Road Race and Kids Fun Run to benefit Special Olympics Maine, msawyer@pfbf.com, 873-1603, Camp Tracy, Oakland.

Saturday 6/17 - Maine's Mega Yard Sale, to benefit the Franklin County Animal Shelter, Fairgrounds, Farmington.

Saturday 6/17 – Greater Gardiner River Festival, events all day, in historic downtown and on the Kennebec River, sales, children's activities, crafts, Coast Guard Vessel tours, food, music, carnival, Talent Show, Fireworks, 8 am-dark, Water

Street and Waterfront Park, Gardiner.

Saturday 6/17 - American Cancer Society Relay For Life of Greater Augusta, 12 noon-12 midnight, 1-800-227-2345, Windsor Fair Grounds, 82 Ridge Road, Windsor.

Saturday 6/17 – Public supper, 3 kinds of beans, American Chop Suey, hot dogs, coleslaw, bread, corn bread and home-made pies, all you can eat, adults \$7, under 5 free, family of 4 or more \$20, 4:30 pm, Mt. Philip Grange, Route 225, Rome.

Saturday 6/17 - "Let's Have a Summer Picnic," ham and potato salad dinner, 5-7 pm, Union Church, Belgrade Lakes.

Saturday 6/17 - Acoustic Jam Session, bring own instruments, donations accepted, 6-9 pm, 612-9357, Fairview Grange, 826 Village Road, Smithfield.

Saturday 6/17 - Martin Swinger, singer/songwriter, 7-9 pm, \$10, 293-2674, Vienna Union Hall, Vienna Mountain Road, off Route 41, Vienna.

Tuesday 6/20 to Thursday 7/20 - "50/50" Statewide Fishing Derby, win cash prizes, 13 species qualify, no limit of entries, submit a picture of the fish against a measuring tape and email to friendsofmessalonskee@gmail.com, order tickets through website or call 465-8333, Friends of Messalonskee Lake, Oakland.

Tuesday 6/20 - "Does the Sun Shine for Everyone?" World Refugee Day Artist Reception, a show by and about immigrants and their contributions to our communities, 4 artists featured, 5:30-8 pm, free and open to the public, 512-4679, Monkittree, 263 Water Street, Gardiner.

Tuesday 6/20 – Quarry Road Race, 8 K at 6 pm/registration 5 pm, Kids Fun Run at 5:30 pm, www.quarryroadraces.com, Quarry Road, Waterville.

Tuesday 6/20 - Natural History Week at Camp Bearnstow, lecture presentations and nature walks by visiting naturalists, June 20-23, 26 and 30, lectures at 10:30 am, walks at 1:30 pm, 293-2280, 84 Bearnstow Road, Mount Vernon.

Tuesday 6/20 - Movie in the park, "The Angry Birds," at dark, 8 pm, rain date Wed 6/21, Coburn Park, Water Street, Skowhegan.

Wednesday 6/21 – Waterfront Wednesday Free Concert, concessions, activities for children, 6 pm, Waterfront Park, Downtown Augusta.

Thursday 6/22 - Family Fun Field Day, free event, refreshments, door prizes, rain date, Tuesday, June 27, 5:30-7 pm, registration required 872-4102, Kennebec Valley YMCA, 31 Union Street, Augusta.

Thursday 6/22 – An Enchanted Evening in the Gardens, to benefit Hospice Volunteers of Waterville Area, 5-8 pm, 873-3615, Fieldstone Gardens, 55 Quaker Lane, Vassalboro.

Thursday 6/22 - "Banned Plants: Maine's Most Unwanted Plants," invasive plants that threaten our landscape, presented by Gary Fish, Maine Department of Agriculture, 7 pm, 495-3617, Maine Lakes Resource Center, Main Street, Belgrade Lakes.

Thursday 6/22 through Sunday 6/25 – "Shout! A Swinging 60s Sensation," 474-7176, Lakewood Theater, Route 201, Madison.



MAINE-ly ELDER CARE

"Caring for the ones who cared for us"



In - Home Nursing • Personal Care Services • Homemakers
• Emergency Response Systems • Transportation Services

STATE REGISTERED PERSONAL CARE
AND HOME MAKER AGENCY

465-3249

28 Center St., Oakland, Me 04963

www.Maine-lyElderCare.com

denise@Maine-lyElderCare.com

Expanded in 2014 to Better Serve Our Customers



**Belgrade Lakes
Marine & Storage, Inc.**

Winter Storage for Summer Vehicles

Secure newer storage facilities accommodate boats on trailers, autos, and the largest RVs in 3 buildings totaling over 21,000 sq. ft. Electrical charging outlets are available. Reasonable rates for real protection from extreme winter storms and sun damage.

207-495-2378 • www.belgradelakesmarine.com

366 Augusta Road, Route 27, Belgrade, ME

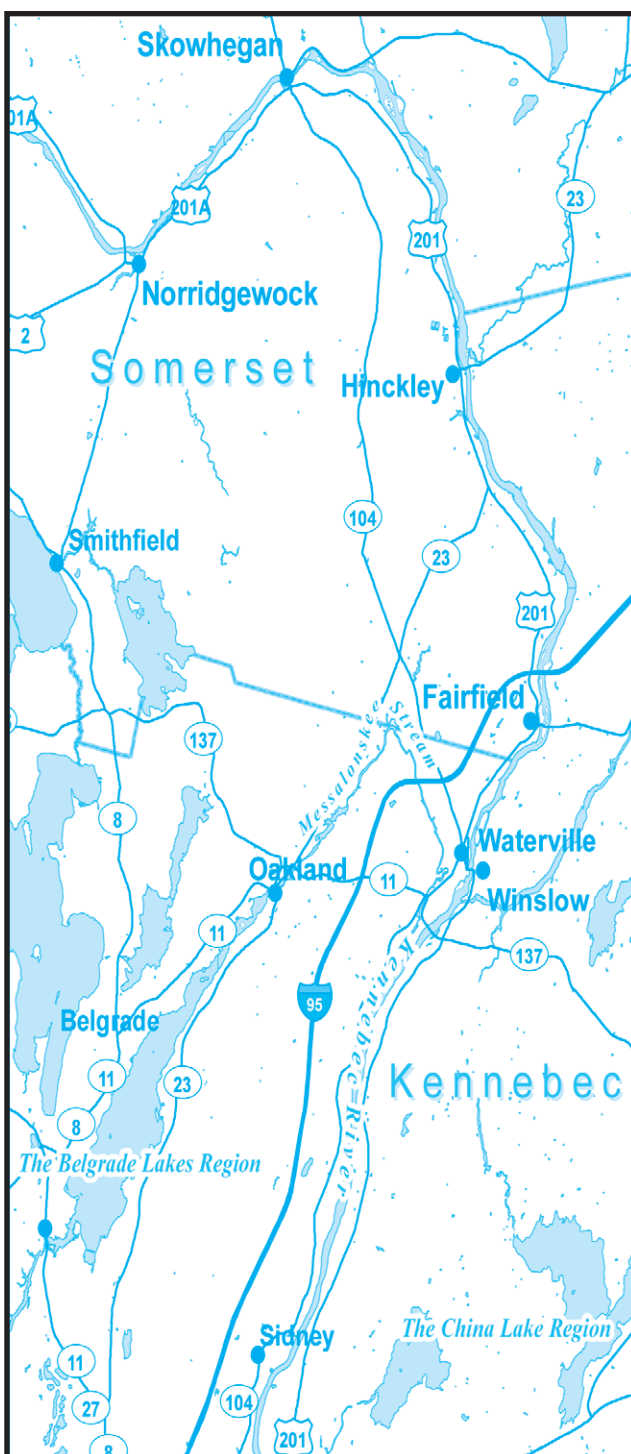


...Continued from page 15

returning from Florida, Rod told me he would like to build an outboard museum, and add a display of ice harvesting tools from days gone by. I thought it was a wonderful idea and we immediately made a rough plan. The next morning, we were off to Tukey Lumber for some wide green hemlock boards to make our display walls. After working many hours over the last month, the Antique Outboard Museum is ready to show off the motors, the old boathouse office and desk, a torn down motor in the workshop and the ice tools—and a few grand old pictures. A preview or grand opening if you will, is scheduled for June 24th, 4-7 p.m. (wine and snacks). On June 28 limited hours will begin each week on Wednesdays 1-6 p.m., Saturdays 9-12 a.m., thru Labor Day. Admission is by donation, funds being shared with the Museum's overhead costs, GPYC kid's sailing program and Belgrade Historical Society's Town House Renovation Fund. Cellar stairs have to be used to access the museum. For questions call Rod or Doris at 207-495-3302



Kennebec Corridor



Rally for Norlands
Civil War Reenactment Weekend
JUNE 17 & 18, 2017

Underground Railroad History Walk

There will be a History Walk on June 16th 10a.m. - 12noon. Co-sponsored by the Readfield and Winthrop Historical Societies, the tour will focus on Rev. David Thurston and the Underground Railroad in Metcalf Neighborhood, Winthrop. Rev. Thurston served the Winthrop Congregational Church 1807-1851. His anti-slavery views and efforts began in the 1820s and an Underground Railroad route was established through Winthrop due to his advocacy. In 1833 he was a delegate at the founding convention of the American Anti-Slavery Society in Philadelphia and helped draft their "Declaration of Sentiments". In 1837 he took a year's leave from the church in order to serve as agent of the Society. He was in demand as a speaker on their "circuit" and over time became more and more assertive that his congregation should hold his views on slavery. Some of his Whig Party parishioners did not agree and because of that he was finally asked to resign after 44 years of serving their church. Following that he wrote the first History of Winthrop in 1855, various papers on religion, temperance and anti-slavery; and preached in Vassalboro, Sidney, Searsport and finally in Litchfield where he died in 1865. He is buried in Metcalf Cemetery, Winthrop near where he lived for nearly twenty years

This History Walk will include some driving as



In 1825 Peter Kittredge of Readfield and his brother Dr. Ingalls Kittredge of Beverly MA bought 90 acres they later developed into the eastern section of Readfield Corner. Ingalls Kittredge was a strong anti-slavery man who helped many escaped slaves flee into Canada and he managed the line of "underground railroad" through Essex County, MA. Uncovering this information led Potter-Clark toward clues that the Underground Railroad existed in Readfield and the immediate area.

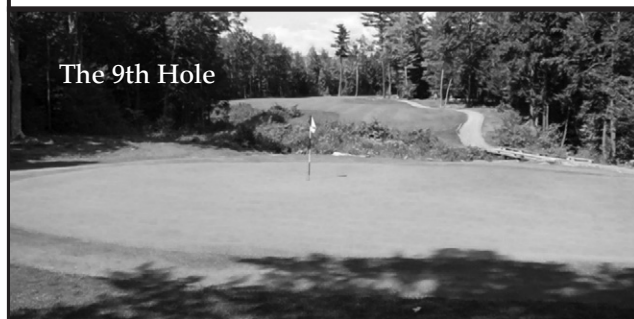
well as easy walking. Meet in the parking lot behind the Congregational Church, Main St. Winthrop by 10:00am and the tour will begin from there. FMI crossings4u@gmail.com; (207) 441-9184; readfield-historywalks.blogspot.com. There is no fee.

**THIRTY-SIX
GREAT REASONS**
MAINE'S ONLY 36-HOLE
PUBLIC GOLF COURSE
THE LARGEST GOLF FACILITY
NORTH OF BOSTON

Championship Golf, Full Pro Shop,
Driving Range, & Modern Clubhouse.
Groups Welcome

Natanis
GOLF COURSE

Webber Pond Road,
Vassalboro, ME • 207-622-3561



LakeHouse™
Renovations
Design • Build • Renovate

Traditional Style Camps,
Cottages and Lakefront Homes
207.242.3663
www.lakehousedesignbuild.com

ACME LAND SURVEYING, LLC
Professional Land Surveyors – Professional Foresters
Property Surveys, Subdivisions, Topographic Surveys, MLIs,
Elevation Certificates/LOMAs, ALTA/ACS Surveys,
Deed Research, Wetland Delineation, Forest Management

108 Fairbanks Rd., Suite 5
Farmington, ME 04938
Website: www.acmelandsurveying.com

Tel. (207) 778-4081
Toll Free (800) 778-4081
Email: info@acmelandsurveying.com

DAY'S REAL ESTATE
"The Waterfront Specialists"

262 Augusta Road, PO Box 284
Belgrade Lakes, Maine 04918
207-495-3111
www.daysrealestate.com
daysrealestate@roadrunner.com

Jeannie G., LMT
Licensed Massage Therapist
120 Drummond Avenue, Suite 1
Waterville, Maine 04901
Phone: **207-509-1251**
jeanniegmt@gmail.com
Veteran and Clergy Preference Discount

An essential component of Self-care and recovery, stress reduction and improved circulation, consider Massage Therapy as preventative maintenance for improved quality of life. Call for flexible scheduling, Monday through Saturday.
Member AMTA



Lynch
LANDSCAPING INC.
FOR THOSE WHO DESIRE QUALITY

207-474-2420

Design - Install - Maintain

Designing landscapes to beautify your property and protect our natural resources - *Installing* these landscapes in a manner that promotes sustainability and prevents erosion - *Maintaining* these landscape so your investment lasts a life time



Licensed, Certified & Accredited
For All Of Your Landscaping Needs



www.lynchlandscaping.com



Belgrade Vacation Rentals

CAMP & COTTAGE RENTALS

Located next to Pete's Pig Barbecue!

Contact Us Today!

(207) 495-4011

www.BelgradeVacationRentals.com

Own A Property? We Will Rent it for You!



RAILROAD SQUARE CINEMA

Showing the Best of World and American Cinema

17 Railroad Square, Waterville, Maine, 04901

24-hour movie info:

207-873-6526

www.railroadsquarecinema.com



Home of the
Maine International
Film Festival
(July 14 - 23, 2017)
www.MIFF.org



free and open to the public

**COLBY
MUSEUM
OF ART**

Colby College Museum of Art
Waterville, Maine
colby.edu/museum
207.859.5600



ST. MICHAEL SCHOOL

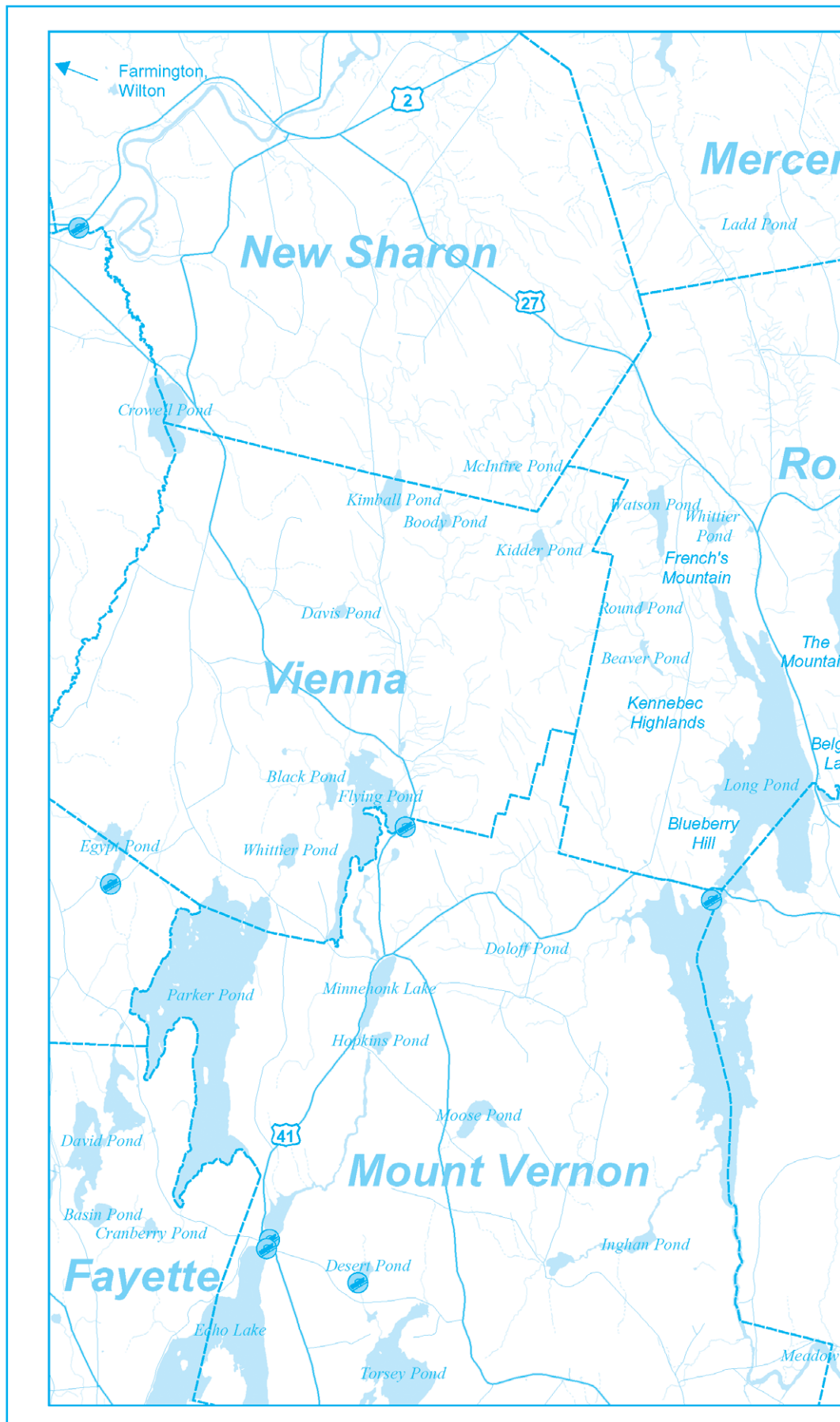
56 Sewall Street, Augusta, ME 04330
207.623.3491 www.smsmaine.org

**NEW Fall 2016...
PRE-K for 3 year-olds!**

St. Michael School will be opening a new Pre-School Program for 3 year-old children starting in the fall. This Program will have a curriculum, daily schedule and an overall program that is consistent with the mission and values that have been associated with a St. Michael School education. Register your child TODAY!



*A Legacy of Excellence,
a Foundation for the Future.*



**EYE CARE
OF MAINE**

"Your Sight is Our Vision"

- Comprehensive Eye Exams
- Eyewear Center / Contact Lenses
- State of the Art Cataract Surgery
- Retinal Diseases and Glaucoma
- LASIK Refractive Surgery
- Laser Surgery
- Oculoplastic Diseases
- Botox, Juvederm and Latisse

• Ambulatory Surgery Center

www.Maine2020.com



Steve R. Witkin, M.D.



Peter C. Kohler, M.D.



James R. Putnam, M.D.



Marc B. Daniels, M.D.



Helen Bell-Necevski, O.D.



Lorie Lepley Parks, O.D.



Michael C. Parks, O.D.



Ian M. Jones, O.D.

325A Kennedy Memorial Drive
Waterville, Maine 04901

**873-2731
(800) 660-3403**

RIVERSIDE FARM
RESTAURANT & WINE MARKET

Restaurant Hours:

Brunch

Saturdays & Sundays - 10am-2pm

Lunch

Tuesdays - Fridays - 11am-2pm

Dinner

Thursdays - Saturdays - 5:30pm-8:30pm

Wine Market Hours:

Tuesdays - Fridays - 10am-5pm

Saturday - 10am-2pm

291 Fairfield Street
Oakland, ME 04963

For reservations call 207-465-4439

RiversideFarmMarket.com



RIVERFRONT BARBEQUE & GRILLE

WORLD CLASS BARBEQUE

SEAFOOD, PASTA, & VEGETARIAN ENTREES

207.622.8899

300 WATER STREET, AUGUSTA, MAINE

WWW.RIVERFRONTBBQ.COM

FULL SERVICE DINING * CATERING * BULK TAKE OUT



*The
Gin Mill*
Augusta, Maine

*Augusta's finest upscale lounge featuring
fine wine, martinis, and over 100 brands
of beer from Germany to Japan*

**Thursday thru Saturday 3:00pm until Midnight,
Above the Riverfront Barbeque & Grille
at 300 Water Street
207.620.9200**

Lakepoint REAL ESTATE

"Put The Team to Work For You"

207.495.3700

GAIL RIZZO 207-242-8119
gail@gailrizzo.com



PAT DONAHUE 207-730-2331
pldcamp@msn.com



**LONG POND ACCESS, MT
VERNON:** 50' Shared
Waterfront. 3BR/2.5BA, yr-
rmd. Custom kit, LR w/brick
hearth, pellet stove, sun
room, office, workshop, 2
car garage on 1.58 Acres.
\$299,000 #1303135



**GREAT POND ACCESS,
BELGRADE:** 2BR/1BA,
screened porch, private
dock, common beach area,
tennis court. One of the best
waterfront communities.
#1307762 **\$181,000**



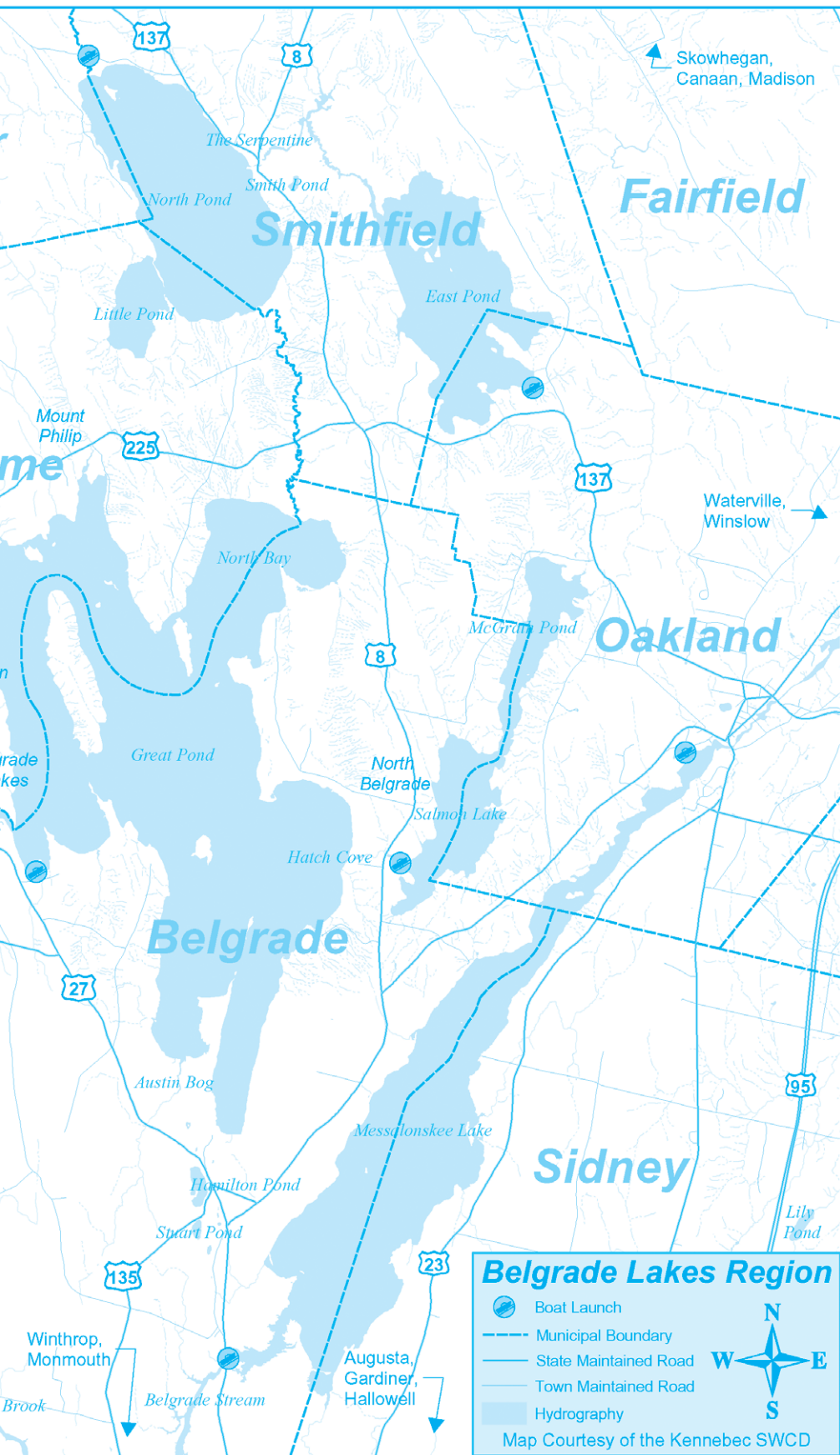
FLYING POND, VIENNA:
133' lakefront on Flying
Pond. 4 BR/2BA, expan-
sive views, family room
walkout **\$296,900**
#1310054



**GREAT POND,
BELGRADE:** 200' lake-
front, on Hoyt Island, 5.80
acres, 3BR/2BA, fireplaces,
summer kitchen, open
decks, amazing setting.
#1284313 **\$459,000**

NEW LISTING

221 Main Street, Belgrade Lakes, Maine 04918



Visit the Businesses on Marina Drive

Family Fun Days BOAT RENTALS



**Reservations:
Online Only**

www.greatpondmarina.com **Open Every Day 8-5**



**GREAT
POND
MARINA
INCORPORATED**

O'Brien Water-Sports Pro Shop

**Don't Be Left
Standing On
The Dock**

Old Town
CANOES * KAYAKS

Lakeside Cottage Rentals



**Exclusive
Lakeside
Rentals in the
Belgrade
Lakes Region**

Located at 25 Marina Dr.
(207) 495-4046
www.LCRentals.com

Waterfront Property Owners

We offer full service rental management services. Please
call if you are interested in having us manage your home.



sadiesboathouse@hotmail.com

• 207-495-4045 •

Like us on Facebook!
Open Friday & Saturday
from 5 PM - 9 PM

Brown Dock Services

George: 495.2600 Jason: 316.7514

Display Docks & Lifts at Great Pond Marina

www.browndockservices.com

Lakepoint REAL ESTATE

P.O. Box 221, 221 Main Street
Belgrade Lakes, Maine 04918
Cell: (207) 592-5577
Office: (207) 495-3700
Fax: (207) 495-3707
www.belgradelakepoint.com
stephanie@belgradelakepoint.com



Stephanie Yeaton
Broker

Clark Marine

Manchester - Monmouth - Belgrade

57 PUDDLEDOK ROAD, MANCHESTER, MAINE
207-622-7011 | CLARKMARINEMAINE.COM

GLASTON



Bryant



Avalon



CRESTLINER



The one stop shop for your fresh water boating needs!

G & L CONTRACTING

- New Construction
- Additions
- Dock Installations
- Construction

207-495-9009

www.gandlcontractingmaine.com



Lift Services

Serving: Great and Long Pond,
Messalonskee, and Cobbossee



— Upcoming —

JUNE

- The 47th Annual Maine Lakes Conference, focusing on the Forest-Freshwater Connection, will be held on Saturday, June 24 at the University of Maine at Orono. 495-3617
- A Country Breakfast will be held on Saturday 6/24, 7-10 am, at the First Congregational Church, 36 River Road, Norridgewock. \$6.50 for adults, \$3 age 10 and under includes pancakes, eggs, bacon, sausage, French toast, baked beans and more. 634-5313
- The Smithfield Volunteer Fire Department Annual BBQ will be on Saturday, June 24, 11 am til gone at the fire station, Route 11, Main Street, Smithfield.
- Kingfield Pops with the Bangor Symphony Orchestra will take place on Saturday, June 24 under the stars in Kingfield. Tickets at www.kingfieldpops.com
- The 9th Annual Kennebec River Rail Trail _ Marathon, _ Marathon Relay and 5K Race/Walk to benefit the maintenance of the trail takes place on Sunday, June 25 starting at City Center in Augusta. 623-8162
- The Oakland Public Library, 18 Church Street, Summer Book and Bake Sale will take place June 27 to 30, 10 am-7 pm on Tuesday, 10 am-6 pm Wed-Fri. Gently used books and fresh baked pies, breads and other pastries will be available. 465-7533
- On Wednesday, June 28, a free Walking Tour of Waterville with Paul Urenock, director of commercial real estate at Colby College will be held at noon. 872-ARTS
- In memory of Halee Lynn Cummings of Sidney, the 2nd Annual Barrel Race will be Friday-Sunday, June 30-July 2, at the Silver Spur Riding Club, River Road. 215-7222

Openings Still Available for Summer "Nature Day Camp"!



Campers explore the waters at the YMCA camp hoping to find all sorts of creatures!

Come explore the outdoors with the Friends of the Cobbossee Watershed through five full days of FUN for children entering grades 4-5-6! Two 1-week sessions – July 17th-21st and July 31st-August 4th– are being held at the YMCA Camp of Maine on Cobbossee Lake in East Winthrop, ME. Campers will enhance their relationship with the natural world as they explore, observe and experience the nearby ponds, forests and fields through hiking, fishing, swimming, canoeing & kayaking; record observations in their own nature journal; learn basic wilderness skills; and participate in ecology skits, crafts and games. Campers will also be treated to a special session of "Tadpole Patrol" aboard the Friends 22' pontoon boat, the OTTER II. Camp will run from 8:30 a.m. – 4:30 p.m. daily. Cost for each 5-day camp session is \$230/pp, and includes lunch and afternoon snack. Limited camp scholarships are available! Register by July 1st for only \$220.00!! For more information, call the Friends office at 621-4100, contact Friends Watershed Educator & Programs Director Cami Wilbert via email camiw@watershedfriends.com, or visit their website: www.watershedfriends.com.



JULY

- On Tuesday, July 4, the Friends of the Belgrade Public Library Book and Bake Sale will be held at the Center for all Seasons in Belgrade Lakes from 9 am-2 pm. 495-3508
- Friends of the Cobbossee Watershed will hold the 15th Annual Friends on the 4th 5K - run, jog or walk, starting at Norcross Point in Winthrop at 8 am. 621-4100
- A guided walking tour of historic Skowhegan featuring "Early Settlers" will be held on Wednesday, July 7 at 10 am. 474-6632
- The Maine Genealogy Fair will be held at the Maine State Museum in Augusta on Saturday, July 8, 9 am-2 pm. Free admission to museum 10 am-4 pm. 287-2301
- The State of the Loons will be presented on Tuesday, July 11 by Susan Gallo, head of the Maine Loon Project at Maine Audubon, at the Maine Lakes Resource Center in Belgrade Lakes. 495-3617
- Bill Berlinghoff will perform on Saturday, July 9, 7 pm, at the Union Coffehouse, on Main Street in Belgrade Lakes, followed by an hour of open mic.
- The 19th Annual Maine International Film Festival with 100 films and 50 filmmakers will run from July 14 through July 23 in Waterville. 861-8138
- Maine Appreciation Day will be Sunday, July 19, 1-5 pm at the Snow Pond Center of the Arts and the New England Music Camp; free concert 3 pm. 465-3025
- Farmington Summer Fest, featuring food, fun, competitions, a talent show, bed race and more, is scheduled for Friday and Saturday, July 21 and 22. 491-5533
- The Annual 5K Road Race to benefit the Belgrade Public Library will be Saturday, July 29 at the Belgrade Central School at 7:30 am. 495-3508

AUGUST

- River Fest Skowhegan, celebrating recreation and life on the Kennebec River, and highlighting the Kennebec River Gorge as the future home of the Run of River Whitewater Recreation Area, will be held August 2-5. 612-2571
- The Taste of Greater Waterville presented by the Mid-Maine Chamber of Commerce will be held Wednesday, August 2, featuring children's activities on the Concourse, food, music, sales and more food along Main Street in downtown Waterville. 873-3315
- On Saturday, August 5, the Belgrade Fire & Rescue Association Bean Hole Supper will be at the Center for all Seasons, Belgrade Lakes, 5-7 pm.
- Tuesday 8/8 - Owls of Maine, by Chewonki, featuring live owls, come early to get a seat, sponsored by the Belgrade Lakes Association, 512-5150, Maine Lakes Resource Center, Belgrade Lakes.
- The 49th Blistered Fingers Family Bluegrass Music Festival will take place August 23-27 at the Litchfield Fairgrounds. 873-6539



... Continued from page 13

He just does not sound like a 20-year hermit to me...

The author expresses gratitude to Christopher Knight "For responding with elegance and intelligence" at the end of the book. How many people have retained their sanity after years of solitude? Not many according to Finkel's research.

Reading books is a big part of Christopher Knight's life, so North Pond owners began leaving bags of books outside for him to take so that he would not have to break in! Yes, they even left food donations...

Michael Finkel also went camping often near the hermit's locale...now it has been cleaned up by a team and little evidence remains...it still is difficult for Finkel to find, no matter how many times he returns to camp and experience the silence and sounds of the woods that Knight sought. Years of propane tanks were buried and the "hermit home" was clean and neat when finally found, just as he was shaved and well dressed when captured at Pine Tree Camp in the middle of the night. His burglaries were at night and often he canoed around North Pond to the hundreds of camps. Knight's sense of hearing was extraordinary and helped him hide. He and his brothers all have a very graceful way of moving which helped him glide through the woods unnoticed, between boulders and the elusive elephant rock entrance.





—Conservation Too—

Recently Public TV had a series on the secret life of plants and “What Plants Talk About”. Well, I’m focusing this week’s article on “bad plants” with a focus on terrestrial plants and particularly on “terrestrial invasive plants”. Over the past few years there has been an increase in terrestrial invasives. Local land owners, foresters, land trust managers and State of Maine officials are taking notice. An invasive plant is defined as a plant that 1] is not native to a particular ecosystem, 2] whose introduction does or is likely to cause economic damage or environmental harm or 3] may cause harm to human health. Approximately one third of Maine’s plant species are not native. Only a small fraction of those are considered “invasive”. These have the potential to cause great harm to our landscape. Check the Maine Natural Areas Program list of fact sheets to determine if a particular species is considered invasive in Maine. The MNAP is the ‘go to’ State agency in Maine for answering questions and getting information about invasive plants. http://www.maine.gov/dacf/mnap/features/invasive_plants/inv sheets.htm There is also a generic State website for all types of invasives i.e. animals, forest pests, aquatic plants, and terrestrial plants http://www.maine.gov/portal/about_me/invasives.html These websites have ‘gallery views’ available which provide good photos to use in identification.

We need to come to grips with the invasive plants that are doing damage to our natural areas and native

plants.

In the Belgrades most people are fully aware of the problem caused by waterbased invasives like Milfoil and Hydrilla. Hours of time and thousands of dollars are spent trying to control their spread. But 70-80,000 acres of the Belgrade area is land. There is a great deal more land that is being invaded than the shoreline waters.

The culprits? In recent years the spread of Multi Flora Rose [see picture], Barberry and Autumn Olive seem particularly robust. Asiatic Bittersweet vine and Common Buckthorn are beginning to appear. Japanese Knotweed frequently gets established when fill is added at a construction site or as we do landscaping. Your back yards are feeling the pressure of these invasive plants. There is a list of these invasive plants with both a list and pictures [see above]. Check the Maine Lakes Center or Cooperative Extension, or our office and pick up some of the handouts.

The first line of defense is to accurately identify the plant. Usually trying to control their spread is the only choice. They will eventually appear.

Recognize that there is a problem. That occasional plant out back with interesting foliage and a pretty flower might become a thick bank of vegetation if you leave it be. Look along the edge of the woods on your property and note the occasional spring clusters of white flowers which indicate Multi Flora Rose. Next year that small patch of white flowers will be joined by additional mounds of nasty thorn covered plants. At

that point removal is much more difficult. That area can become a breeding ground of fruit and seeds which get spread to neighboring properties.

Our natural landscape is part of what Maine is all about. Its future depends on the choices we make. When buying plants or moving them from place to place, consider whether the plants are likely to escape. Plants advertised as fast growing, prolific, and soil tolerant are often the ones that become invasive. Maine just won’t be Maine if the plants dominating our landscape are all from away. As Harry Potter’s professor, Mad Eye Moody, would say, ‘constant vigilance’.

- Replace invasive plants in your garden with non-invasive alternatives.
- DO NOT attack the problem with in-discriminant herbicides. They may have a place in your management plan but they are NOT a magic bullet. Be careful with their use.
- Check out the Maine Natural Areas IMapInvasive program and become a citizen scientist.

Remember, there is a lot to do in order to protect water quality. Managing invasive plants is part of that effort. While we may talk about managing our tourists [the other “invasives”], those people usually leave in the fall. We frequently benefit from their visit. Not so with the invasive plants. :-()



For information about any of our conservation projects please contact Dale Finseth at 622-7847, x 3 or check our website at www.kcswood.org

North Pond Hermit Story

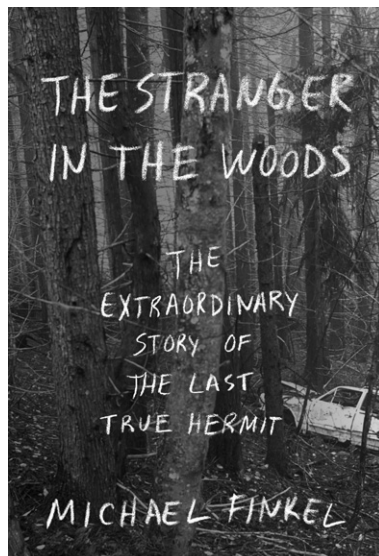
By Martha Barkley

With so many Maine authors to read (Richard Russo, Monica Woods, Kathy Swegar right here in Rome, etc.), what should I borrow from our Belgrade public library? The 2017 thoroughly researched story of Christopher Knight and his twenty years of survival in our local North Pond Maine woods. New York author and journalist Michael Finkel established a correspondence with “the hermit” while he served his time in jail. Meeting and talking to him regularly proved revealing.

I found the story dumbfounding in many ways. How could he survive those twenty below zero winter nights without a fire? Christopher prized his need for solitude in the woods so highly that he faced death every winter of those twenty years. Only three minutes from a North Pond camp, how could his well established camp site be so well hidden?

His repeated invasions of The Pine Tree Camp was where he was finally caught.

We buy our annual Christmas cards from Pine Tree Camp, so I found this connection very personal. Also the news coverage locally of so many North Pond burglaries was the talk for many summers. Knight’s stolen goods were rather small and he always careful-



hermit.

The author not only investigates Knight, but he covers solitary confinement victims and hermits around the globe. The history lessons are many. I found his John McCain experience of solitary interesting, because choosing to be a hermit is quite different from punishment imposed in prison.

The Albion family who welcomed their missing family member back home is quite moving. Every

ly replaced screens and windows when he left...very neat and meticulous burglar.

The prosecution for only the last two years of burglaries was the legal evidence presented in court. Minor amounts of often less than twenty dollars of goods carried away by the

aspect of this story in our own backyard has so many ramifications. The camps on North Pond dealt both generously, by leaving bags of books on their exterior doors for him, and also judgmentally as well. Their privacy had been repeatedly invaded and clothes, food, and propane tanks stolen. Batteries were another important item taken.

His well being today is one that may still seem precarious, even though his family has helped Christopher to meet all the court’s demands, including weekly tests for drugs and alcohol, etc. when he never abused drugs. Knight works alone in the barn on his mother’s forty-acre farm, repairing metal machinery for his brother’s business. He still longs for the quiet of the woods even though he could hear the summer sounds of motor boating on North Pond while hiding for two decades.

Not many humans have achieved what Christopher Knight accomplished and yet remained sensitive and responsive in mind and spirit to tell the tale. Tears were shared between Knight and Finkel. Knight told Finkel to go home to his wife and children in Montana more than once! “The Hermit” loved the photos of the author’s family, calling the two children “the cowboys,”

Continued on page 12...

GENERATORS of MAINE INC.
SALES • SERVICE • INSTALLATION
www.generatorsofmaine.com 207-495-2285

KOHLER
IN POWER. SINCE 1920.

Platinum Dealer

Bear Spring Camps
Lakeside cabins on Great Pond in the heart of the Belgrade Lakes Region

~Fishing ~Swimming~Tennis~Boat Rentals~ Sand beach~Home cooked meals~

www.bearspringcamps.com ~207.397.2341~60 Jamaica Point Rd, Rome, ME 04963

Dental Hygiene Services LLC, PA
Nicole E. Wasilewski
Independent Practice Dental Hygienist
207-557-5611
913 Main Street, N. Vassalboro, ME 04962
Open Mon., Tues., Thurs., & Sat.
Evening Hours by Appointment
We accept MaineCare and most dental insurances
Established in 2013



F. A. Rizzo Appraisal Company Frank Rizzo

Consultant/Appraiser

Estate Appraisal & Planning

Certified Residential cr709

tel. (207) 495-3365

cell (207) 458-4916

farizzo@roadrunner.com



Since 1992

ALDEN CAMPS

Est. 1911



- Lobster Bakes on Friday nights by Reservation
- Lakeside Cottages • Boats & Motors
- Full American Plan
- Dining on the Porch by reservation Saturday through Wednesday

3 Alden Camps Cove
Oakland, Me 04963
(207-465-7703)

E-mail: info@aldencamps.com • Website: www.aldencamps.com



BOOKS, PUZZLES, TOYS, GAMES

A store for children of all ages,
the young and the young at heart.

Open Monday 12 to 5 • Tues. - Sat. 9 to 5
52 Main St. Waterville 872-4543

Maple Leaf Self Storage

Belgrade Me - 3.3 mi off Rte 27 on Route 135
495-2191

Various size units
Owners live on site



Boat / Auto Storage
By foot or unit

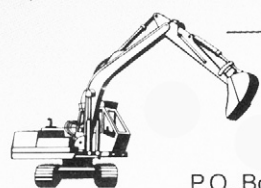
David J. Auclair
www.auclaircycle.com

AUCLAIR CYCLE & SKI

64-66 BANGOR ST. AUGUSTA, ME 04330
623-4351 / 800-734-7171 • Fast Professional Service
Bicycles • Skateboards • Roof Racks • Rentals

DAVID STEVENS

Excavation & Septic Systems



LOAM GRAVEL SAND

465-3815
Cell: 314-0314

P.O. Box 146 • Belgrade, Maine 04917

CASTLE ISLAND CAMPS
Bait, Tackle, Gas,
Boat, Kayak, and
Paddleboard
Rentals



Boats, Daily or
Weekly

495-3312
Rentals for
Long Pond Only

ANTIQUE OUTBOARDS of BELGRADE MUSEUM / DISPLAY

Wednesdays - 1-6 p.m. Saturdays - 9-12 a.m.

51 Dry Point Drive, Rome
(in past Wings Hill 1/8th mi.)

495-3302

Luckiest Boy Books too!

HOANG REALTY

Pam Armour

Realtor

31 Western Ave.
Augusta, Me 04330
207.314.7445 cell
207.623.0623 office
pbrunye@yahoo.com



— Accommodations —

Alden Camps, lakeside cottages on East Pond, established 1911, American Plan meals, boat and motor rentals, dining and lobster bake open to public by reservation, 3 Alden Camps Cove, Oakland, 465-7703, www.aldencamps.com

Bear Spring Camps, waterfront cottages on Great Pond, home-style meals, sandy beach, boats, motors, docks, 60 Jamaica Point Road, Rome, 397-2341, www.bearspringcamps.com

Castle Island Camps, cottages on the water, Long Pond, American Plan meals, boat and kayak rentals, Castle Island

Road, Belgrade Lakes, 495-3312, www.castleislandcamps.com

The Village Inn, rooms near the water, in the heart of the Village, 157 Main Street, Belgrade Lakes, 495-3553, www.villageinnandtavern.com

Belgrade Vacation Rentals, lakeside camp and cottage rentals throughout the area, long and short stays, many size accommodations and rates, 81 Main Street, downtown Belgrade Lakes, 495-4011, www.belgradevacationrentals.com

Lakeside Cottage Rentals, featuring over 70 private homes, 24/7 customer friendly service, 25 Marina Drive, Belgrade Lakes, 592-5577, 495-4046, www.lcrentals.com



— Notebook —

Masonic Lodge #99 Bikes for Books

• The Vernon Valley Masonic Lodge #99 will be holding a public supper on Saturday, June 24 at 5 pm at the Center for All Seasons in Belgrade Lake to raise funds for Bikes for Books, a program that partners the lodge with local elementary schools to encourage students to read and report on as many books as they can over a certain period. For each book read, the reader can enter a raffle, and for each time period completed a girl and a boy from each grade is awarded a brand-new bicycle. In March the lodge presented its first 12 bicycles to students at Mount Vernon elementary school. The students had read over 600 books in a one-month period. With the help of the June 24 fundraiser, the lodge hopes to continue the program and to expand into Belgrade. Tickets for the supper are \$10 per adult and \$5 per child or \$25 per family.

Maine Wildlife Park

• The Maine Wildlife Park in Gray offers a schedule of programs throughout the spring, summer and fall, usually on Saturday from 11 am-2 pm. On June 17 "Mr. Drew and His Animals Too" "hands-on" session introduces rescue animals and on June 24 staff from the International Cryptozoology Museum introduces visitors to the "study of hidden and unknown animals." For a complete schedule visit mainewildlifepark.com

Write On Golden Pond

• On July 14-16, Maine's own "On Golden Pond" award-winning (Great Pond) writer teaches this intensive, confidence-inspiring two-day course in creating a new short play to be performed by professional actors at the completion of the weekend. The workshop setting is Whitebridge Farm in the Lakes Region of New Hampshire. Only 8 participants accepted. 603-744-3652

Augusta

• What are you reading this summer? "Let's Talk About It," a free reading and discussion group provided by the Maine Humanities Council's Maine Center for the Book in cooperation with the Maine State Library is offering a series titled "The Passage of Time, the Meaning of Change" on Tuesdays, June 13-August 8, at 5:30 pm for 90

minutes. Books included are: "The Country of the Pointed Firs" by Sarah Orne Jewett; "Collected Lyrics" by Edna St. Vincent Millay; "One Man's Meat" by E.B. White; "As We Are Now" by May Sarton; and "The Beans of Egypt, Maine" by Carolyn Chute. Registration limited. 287-5600

Belgrade

• The Belgrade Community Center for All Seasons is offering three camp programs this summer. Camp Golden Pond for grades K-6th and Camp Loon for grades 6-9 will start on Monday, June 26. Camp Golden Pond runs for 8 weeks and includes weekly day trips. Camp Loon runs for 7 weeks and will have weekly off-site trips as well as 3 overnight tenting experiences during the summer. The Belgrade Lakes Youth Sailing program begins July 10 and runs for six weeks. Classes are half day. 495-3481

Farmington

• The Shiretown Bookers presents the exhibit "Cockamamie!" Old and Unusual Books from Members' Collections" in the Bookers' display area through September 22, Mantor Library, 116 South Street. shiretownbookers@gmail.com

Gardiner

• Spark, Theater Fun & Training for Kids offers 6 sessions in July and August: Beginner's Camp, Creation Lab and Advanced Workshop. The classes are held in historic Johnson Hall on Water Street and are designed to help young people find what sparks their interest in the performing arts. Classes are 9 am-4 pm. 582-7144

Hallowell

• Gaslight Theater opens its spring production "Noises Off" on Friday, June 16. Written by Michael Frayn and directed by Linda Duarte, Noises Off is actually a play within a play depicting a troupe of ill-prepared actors attempting to stage "Nothing's On." Performances will be Friday-Sunday, June 16-18 and 23-25 at Hallowell City Hall, 1 Winthrop Street. 626-3698

Monmouth

• Classics in Context discussions at the Theater at Monmouth provide in-depth information on plays before they are attended. The four pre-show discussions for the 2017 season include: The Learned Ladies July 7, Macbeth July 14,



Dining

Augusta

• **Riverfront Barbeque & Grille and Gin Mill Lounge**, world class barbeque, seafood, pasta and vegetarian entrees, full service dining, catering, bulk take out, 300 Water Street, Augusta, www.riverfrontbbq.com, 622-8899

Belgrade

• **Pete's Pig**, 81 Main Street, sandwiches and platters for picnic-style eating on the premises or to go, also offering a full range of catering, Main Street, Belgrade Lakes Village, www.petespig.com, 495-4095

• **Sadie's Boathouse Restaurant** at Great Pond Marine, hearty contemporary American fare, 25 Marina Drive, Belgrade Lakes, 495-4045, 242-1273

• **Spiro & Company**, gourmet Greek food, Main Street, Belgrade Lakes Village, www.spiroandcompany.com, 441-2103

• **The Village Inn and Tavern**, 157 Main Street, Route 27, Belgrade Lakes Village, 495-3553, www.villageandtavern.com

• **Winterberry Farm Café**, homemade treats, pie, cookies, granola bars, grilled organic cheese sandwiches, veggies, drinks, Route 27, Belgrade, 649-3331

Oakland

• **Alden Camps**, lunch or dinner by reservation Saturday-Wednesday space permitting, lobster bakes on Friday night by reservation, 3 Alden Camps Cove, Oakland, www.aldencamps.com, 465-7703

• **Riverside Farm Restaurant & Wine Market**, simple, wholesome food and drink since 1990, 291 Fairfield Street, Oakland, www.riversidefarmmarket.com, 465-4439

Oakland - Wines & Spirits

• **Tree Spirits**, tasting room for award winning wines and spirits made from local apples, pears and maple syrup, tours available, 152 Fairfield Street, Oakland, www.treespiritsofmaine.com

Smithfield

• **Smithfield Ice Cream Place**, lunch, dinner and dessert, 855 Village Road, smithfieldicecreamplace.com, 368-5039

Othello July 17 and Red Velvet July 28. All discussions are on Friday, 5:30-6:30 pm. 933-9999

Skowhegan

• Tour the Sappi Somerset Mill, a world-class pulp and paper operation. Tours begin June 26 and end August 11, Mondays and Fridays, 8:30 am-3:30 pm, and run approximately an hour and a half. Learn about the paper making process, energy consumption and production, forest sustainability, the innovation of the company and much more. All visitors must be at least 16, wear long pants and long-sleeved shirts, wear comfortable walking shoes (no sandals) and be prepared to walk at least a mile in warm weather. Reserve at least one day in advance. 238-3098

• Local cheese, bread and beer will be celebrated on Sunday, June 25, noon to 4 pm at Bigelow Brewing Co. in Skowhegan. A variety of samples will be offered from local cheese makers and bread makes and there will be demonstrating of fire-baking. Tickets are \$10 in advance, \$15 at the door. All proceeds benefit Somerset Cultural Planning, a project of the Wesserunsett Arts Council. 612-2571

Waterville

• Yard Sale Vendors Wanted for the Maine International Film Festival outdoor art sale scheduled for July 15-23 in the Railroad Square Cinema parking lot. Sale hours are 11 am-6:30 pm weekends and 2-6:30 pm weekdays. The deadline to reserve space is July 8. 873-2425

Winslow

• Fort Halifax Days will be celebrated on Saturday June 24, noon to 4 pm, in Fort Halifax Park. Open and free to the public, the event will include French and Indian War Reenactments by Living History Reenactors, musical entertainment, food and children's events. Please bring chairs to watch the reenactments.



Local Boy's Love of Outboard Motors Turns Into Small Museum

By Doris Mathias

It was 1953 (or 4), when at age 5 or 6, my now husband Rod Johnson secretly (he thought) snuck into old Bill Pulsifer's boathouse to try and catch a perch. An old outboard stood in the corner closet, covered with a film of oil, spider dung and dirt. None the less, the intrigue began right there.

After being "caught red-handed" by the old man Bill P., he was asked if he would like to use the motor if it would run. Things were never the same again. The 4 horsepower Champion plied the waters of Mill Stream and Great Pond for a couple of years until more horsepower seemed interesting. Every year or two, a "new" motor (actually a tinkered up clunker) would appear.

Teenage life brought a racing skiff with a hopped-up Chris Craft outboard, then young married family life sported the cat's meow, a wooden 21 foot Grady White with an 80 horse Evinrude. Evening barbeques on the boat were the in thing for the locals and often we'd overload the boat with as many as a dozen folks at once. Working at Day's Marina offered many opportunities to acquire trade-ins from the summer crowd, thanks to bosses Darryl and Linda Day.

During mid-life, carpentry had to take over as employment, and sailing began the new intrigue. After 15 years of Morgans and Mainships, the time has come to scale it back to where it started.

The collection of 38 antique outboards has been ongoing for several years, with many donated and some purchased. They have been paraded through town on the 4th of July, but now it's time to let them rest in their new home (our basement museum). This spring after

Continued on page 9....



157 Main Street/RT 27
Belgrade Lakes, Maine 04918
villageinnandtavern@gmail.com
207.495.3553
www.villageinnandtavern.com

THE VILLAGE INN AND TAVERN
Belgrade Lakes, Maine
since 1921



WINTERBERRYFARMSTAND.COM

Route 27, Belgrade
207.649.3331

SUMMER CSA
WEEKLY BASKET OF ORGANIC VEGETABLES ALL SUMMER
SIGN UP NOW!

Belgrade's working family farm
FARMSTORE & CAFÉ
Open 7 days a week, 9am - 6pm
Featuring all-organic products grown and produced here on the farm.
3 miles south of Belgrade Lakes Village on route 27.




Pete's Pig
CATERING & BARBEQUE

Now Booking for 2018

- Corporate Functions
- Weddings & Rehearsals
- Special Events

Call (877) 860-1503
(207) 495-4095
www.petespig.com

NEW MAINE TOURMALINE JEWELRY.

L. TARDIF JEWELER
62 Main Street
Waterville, Me.
est. 1955

Tues - Sat
9 - 5

207-872-7542



The Ice Cream Place

855 Village Road, Smithfield, ME
Across from the Post Office
362-5039 • Open 11am-9pm
smithfieldicecreamplace.com

Ice Cream
Lobster Rolls
Sub Rolls
Pizza

Accessible by Boat from East Pond

CROOKED ISLAND SAILING
LESSONS-RENTALS-DELIVERIES



207-495-9066



-Business Directory-

ACCOMMODATIONS

See page 18

ART

Colby College Museum of Art, 5600 Mayflower Hill, Waterville, 859-4000, www.colby.edu/museum/

BEVERAGES

Tree Spirits, 152 Fairfield St, Oakland, 861-2723, www.treespiritsofmaine.com

BICYCLES

Auclair Cycle & Ski, 64 Bangor St, Augusta, 623-4351, www.auclaircycle.com

BOAT COVERS

Waterville Upholstery & Canvas, 1042 Kennedy Memorial Dr, Oakland, 465-7847, www.watervilleupholstery.com

BOAT LIFTS

Hammond Lumber Company, Auburn, Bangor, Belgrade, Boothbay Harbor, Brunswick, Damariscotta, Fairfield, Farmington, Greenville, Pemaquid, Portland, Skowhegan, Wilton, 1 866-HAMMOND, www.hammondlumber.com

BOAT MOORINGS

Great Pond Marina, 25 Marina Drive, Route 27, Belgrade Lakes, 495-2213, www.greatpondmarina.com

BOAT RENTALS

Castle Island Camps, Long Pond, 441 Castle Island Road, Belgrade Lakes, 495-3312, www.castleisland-camps.com

Great Pond Marina, 25 Marina Drive, Route 27, Belgrade Lakes, 495-2213, www.greatpondmarina.com

BOAT SALES AND SERVICES

Clark Marine, 57 Puddledock Road, Manchester, 622-7011, mail@clarkmarine.biz, funonthewaterstartshere.com

Hamlin's Marine, 290 West River Road, Waterville, 872-5660, www.hamlinsmarine.com

Mid-Maine Marine and RV, 885 Kennedy Memorial Drive, Oakland, 465-2146, www.midmainemarine.com

BOAT STORAGE

Belgrade Boat Storage, 31 Pinkham's Cove Road, Belgrade, 495-3421, 314-3287, www.belgradeboatstorage.com

Belgrade Lakes Marine and Storage, Inc, 366 Augusta Road, Belgrade, 495-2378, www.belgradelakesmarine.com

Clark Marine, 57 Puddledock Road, Manchester, 622-7011; and Route 202, Monmouth, mail@clarkma-

rine.biz, funonthewaterstartshere.com

Great Pond Marina, 25 Marina Drive, Route 27, Belgrade Lakes, 495-2213, www.greatpondmarina.com

Hamlin's Marine, 290 West River Road, Waterville, 872-5660, www.hamlinsmarine.com

Maple Leaf Self Storage, 688 Manchester Road, Route 135, Belgrade, 495-2191, 441-5529

Mid-Maine Marine, 885 Kennedy Memorial Drive, Oakland, 465-2146, www.midmainemarine.com

BOOKS

Children's Book Cellar, 52 Main Street, Waterville, 872-4543, childrensbookcellar.com

BUILDERS

Craig's Carpentry/North Bay Estates, Route 8, North Belgrade, Craig Alexander, 649-3749

G&L Contracting, 116 Lakeshore Drive, Belgrade Lakes, 215-7951, 495-2325, 233-7408, gandlcontractingmaine.com

LakeHouse Design, Build, Renovations, 17 Birchwood Road, Augusta, 242-3663, www.lakehousedesignbuild.com

BUILDING MATERIALS

Hammond Lumber Company, Auburn, Bangor, Belgrade, Boothbay Harbor, Brunswick, Damariscotta, Fairfield, Farmington, Greenville, Pemaquid, Portland, Skowhegan, Wilton, 866-HAMMOND, www.hammondlumber.com

COMPUTER CONSULTANTS

Macintosh Solutions, Michael Breault, 24 Welch Road, Wilton, 645-5083, cell 578-0226, www.michael-breault.net

DENTAL CARE

Dental Hygiene Services, North Vassalboro, 680-9377

DINING

See Directory on page 15

DOCKS

Brown's Dock Services at Great Pond Marina, 495-2600, 316-7514, www.browndockservices.com

G&L Contracting, 116 Lakeshore Drive, Belgrade Lakes, 495-2325, 215-7951, 233-7408, gandlcontractingmaine.com

Hammond Lumber Company, Auburn, Bangor, Belgrade, Boothbay Harbor, Brunswick, Damariscotta, Fairfield, Farmington, Greenville, Pemaquid, Portland, Skowhegan, Wilton, 866-HAMMOND, www.hammondlumber.com

ELDER CARE

Maine-ly Elder Care, 28 Center Street, Oakland, 465-3249, www.maine-lyeldercare.com

ENGINEERING

Thayer Engineering, septic design, storm water mitigation, permitting, 17 Hasson Street, Farmingdale, 582-7762, www.thayereng.com

ESTATE APPRAISALS

F.A. Rizzo Appraisal Company, estate appraisal and planning for real estate, 495-3365, 458-4916, farizzo@roadrunner.com

EXCAVATING

Belgrade Boat Storage, 31 Pinkham's Cove Road, Belgrade, 495-3421, 314-3287, belgradeboatrentals.com
David Stevens, P0 Box 146, Belgrade, 465-3815, cell 314-0314

EYE CARE

Eye Care of Maine, 325 E. Kennedy Memorial Drive, Waterville, 873-2731, 1-800-660-3403, www.Maine2020.com

FARMSTANDS

Winterberry Farm, 538 Augusta Road, Route 27, Belgrade, 495-2593, 649-3331, www.winterberryfarmstand.com

FINANCIAL PLANNING

Golden Pond Wealth Management, 129 Silver Street, Waterville, 873-2200, www.goldenpondwealth.com

FIREWOOD

J & M Logging, Inc. 853 Civic Center Drive, Augusta, 622-6353, www.jmlogginginc.com

FLOORING

Hammond Lumber Company, Auburn, Bangor, Belgrade, Boothbay, Brunswick, Damariscotta, Fairfield, Farmington, Greenville, Pemaquid, Portland, Skowhegan, Wilton, 866-HAMMOND, www.hammondlumber.com

GENERATORS

Generators of Maine, 262 Augusta Road, Belgrade, 495-2285, www.generatorsofmaine.com

GOLF

Natanis Golf Course, 735 Webber Pond Road, Vassalboro, 622-3561, www.natanisgc.com

HEALTH CENTERS

Inland Hospital, 200 Kennedy Memorial Drive, Waterville, 861-3000, 1-800-491-8600, www.inlandhospital.org

ICE CREAM

Smithfield Ice Cream Place, 855 Village Road,



smithfieldicecreamplace.com, 368-5039

INSECT CONTROL

Mosquito Banditos, ,
mosquitobanditos-maine.com, 613-5656

JEWELRY

L.Tardif Jeweler, 62 Main St., Waterville,
872-7542, ltardifjewelers.com

KITCHENS

Hammond Lumber Company, Auburn, Bangor,
Belgrade, Boothbay, Brunswick, Damariscotta,
Fairfield, Farmington, Greenville, Pemaquid,
Portland, Skowhegan, Wilton, 866-HAMMOND,
www.hammondlumber.com

LAKE ASSOCIATIONS

Belgrade Lakes Association (BLA), Long Pond
and Great Pond, PO Box 551, 137 Main Street,
Belgrade Lakes, 512-5150,
belgradelakesassociation.org

LANDSCAPING

G&L Contracting, Belgrade Lakes, 215-7951, 495-
2325, 233-7408, gandlcontractingmaine.com
Lynch Landscaping, Skowhegan, 474-2420,
lynchlandscaping.com

MASSAGE THERAPIST

Jeannie G., 120 Drummond Avenue, Suite
1, Waterville, 509-1251

MOVIE THEATERS

Railroad Square Cinema, call for titles and times,
17 Railroad Square, Waterville, 873-6526,
www.railroadsquarecinema.com

MUSEUMS

Antique Outboards of Belgrade, 51 Dry Point
Drive, Rome, 495-3302
Colby College Museum of Art, 5600 Mayflower
Hill, Waterville, 859-5600, www.colby.edu/museum/

PHYSICAL THERAPY

Dockside Physical Therapy, 47 Main Street,
Belgrade Lakes, 495-3195, 512-2544,
Fax 512-2545

PIANO ENJOYMENT

Diane Gorman, 906 Manchester Road, Belgrade,
495-3222

PLUMBING

Paul Hanna's Plumbing, Belgrade, 495-3805

REAL ESTATE DEVELOPMENTS

North Bay Estates, Belgrade, 649-3749,
crgsnbe@yahoo.com

REAL ESTATE

Day's Real Estate, 262 Augusta Road, Route 27,

Belgrade Lakes, 495-3111, 1-888-495-3111,
www.daysrealestate.com

Hoang Realty, 31 Western Ave., Augusta, 623-0623,
www.hoangrealty.com

Lakepoint Real Estate, 221 Main Street, Belgrade
Lakes, 495-3700,
www.belgradelakepoint.com

Sprague & Curtis Real Estate, 75 Western Avenue,
Augusta, 623-1123,
www.spragueandcurtis.com

LODGING RESERVATIONS

See page 14

RESTAURANTS

See Dining Directory on page 15

RETIREMENT COMMUNITIES

Granite Hill Estates, 60 Balsam Drive, Hallowell,
626-7786, 1-888-321-1119,
www.granitehillestates.com

SAILING

Crooked Island Sailing, lessons, rentals, deliveries,
Peter McManus, Belgrade Lakes, 495-9066,

SCHOOLS

St. Michael School, grades pre-K 3-year-old
through 8th, 56 Sewell Street, Augusta,
623-3491, www.smsmaine.org

SECURITY SYSTEMS

Cayer Security Services, Inc, 208 College Avenue,
Waterville, 453-9177,
www.cayersecurity.com

SELF STORAGE

Maple Leaf Self Storage, 688 Manchester Road.,
Route 135, Belgrade, 495-2191

SURVEYING

Acme Land Surveying, 108 Fairbanks Road, Suite
5, Farmington, 778-4081,
www.acmelandsurveying.com

WINDOWS

Hammond Lumber Company. Auburn, Bangor,
Belgrade, Boothbay, Brunswick, Damariscotta,
Fairfield, Farmington, Greenville, Pemaquid,
Portland, Skowhegan, Wilton, 1-866-HAMMOND,
www.hammondlumber.com

LAKE AND LAND ASSOCIATIONS

THE BELGRADES...

- **East Pond Association**, Smithfield/Oakland,
www.eastpond.org
- **North Pond Association**,
Smithfield/Rome/Mercer, www.northpond.net
- **McGrath Pond/Salmon Lake Association (MPSL)**,
Belgrade/Oakland, P.O. Box 576, Oakland, 04963,
873-5285, www.mcgrathpond-salmonlake.org
- **Belgrade Lakes Association (BLA) for Great Pond
and Long Pond**, Belgrade/Rome/Mount Vernon, PO
Box 551, 137 Main Street, Belgrade Lakes, 04918, 512-
5150, www.belgradelakesassociation.org
- **Friends of Messalonskee**,
Oakland/Belgrade/Sidney, PO Box 532, Oakland,
04963, 465-4622, www.friendsofmessalonskee.com
- **Belgrade Regional Conservation Alliance and
BRCA Conservation Corps**, PO Box 250, 137 Main
Street, Belgrade Lakes, 04918, 495-6039, www.belgradelakes.org
- **Belgrade Lakes Region Business Group
(BLRBG)**, PO Box 596, Belgrade Lakes, 04918, 495-
3700, www.belgradelakesmaine.com
- **Maine Lakes Resource Center/Docks to
Doorways**, PO Box 431, 137 Main Street, Belgrade
Lakes, 04918, 495-3617, 620-6029, www.mainelakesresourcecenter.org

BEYOND...

- **Friends of the Cobbossee Watershed**, PO Box
5003, Augusta, 04332-5003, 621-4100, www.watershed-friends.com
- **Franklin County Soil & Water Conservation
District**, 107 Park Street, Farmington 04938, 778-4279,
www.franklincswcd.org
- **Kennebec County Soil & Water Conservation
District**, 21 Enterprise Drive, Augusta 04330, 622-
7847, ext. 3, www.kcswwcd.org
- **Somerset County Soil & Water Conservation
District**, 12 High Street, Skowhegan 04976, 474-8324,
www.somersetswcd.org
- **Kennebec Land Trust (KLT)**, PO Box 261, 331
Main Street, Winthrop, 04364, 377-2848, www.tkltr.org
- **Kennebec Messalonskee Trails**, PO Box 2388,
Waterville, 04903, 873-6443, www.kmtrails.org
- **Kennebec River Rail Trail**, PO Box 2195, Augusta,
04338, 623-8162, www.krrt.org
- **30 Mile River Watershed Association (30 MRWA)**,
Kimball Pond in Vienna to the Androscoggin River,
PO Box 132, Mt Vernon, 04352, 685-4956,
www.30mileriver.org
- **Maine Lakes Society**, formerly Congress of Lake
Associations, PO Box 447, 137 Main Street, Belgrade
Lakes, 04918, 1-855-463-2652
- **Central Maine chapter of the New England
Mountain Bike Association (CeMeNEMBA)**, 441-
6227, www.cemenemba.org

Changes?
Updates?

New contact information?
Please let us know...
mo.breault@gmail.com
or ebelnews@earthlink.net



The Washburn-Norlands Living History Center Hosts its 6th RALLY for NORLANDS: CIVIL WAR REENACTMENT WEEKEND

The Washburn-Norlands Living History Center in Livermore is hosting its 6th Civil War Reenactment Weekend on June 17 & 18, 2017. Don't miss the largest Civil War reenactment in Maine that features a wide variety of living history demonstrations, exhibits, and engaging activities remembering the activities of the Civil War. This family-friendly event is organized by the 3rd Maine Company A and 15th Alabama Company G to benefit Maine's oldest living history farm and museum.

The Norlands is a 445-acre museum and working farm that is the ancestral home of the Washburn family. The rolling hills surrounding the mansion, meeting house, cape house, and one-room schoolhouse make Norlands an ideal place to experience the battles once fought in similar communities to the south and the impact of war on the families who remained on the rural home front. While no actual battles took place at Norlands, the historic site has a real connection to the Civil War. The Washburns from Livermore are one of the nations' most influential political families of the 19th century and had a hand in transforming the nation at the time of the Civil War. Israel Washburn, Jr. was elected as governor of Maine in 1861 and quickly became known as Maine's little-known giant of the Civil War. He sent more troops per capita than any other northern state. Cadwallader served as a Major General during the War. Elihu was instrumental in getting Abraham Lincoln elected to the Presidency. Samuel served in the U.S. Navy and was Acting Master of the ironclad gunboat, U.S.S. Galena, when it sustained fire on the James River. Caroline married Freeland Holmes, a doctor from Foxcroft, who volunteered with the 6th Maine Regiment. Freeland died in 1863 leaving Caroline as a widow with two small children. Hear more about the Washburn's remarkable influence and achievements and how the War affected their lives at home during Rally for Norlands.

Union and Confederate military and civilian reenactors from across New England will be camped on the grounds. Cavalry units are also planning to attend. Living historians will scrimmage with replica weaponry and perform



Union Soldiers at Rally for Norlands 2015

drilling and firing demonstrations. The 6th Maine Battery will be on hand to fire their Parrott Rifle/cannon. A full-scale battle scenario will be staged each day on the hay fields of the Norlands (2:30pm on Saturday and 2:00pm on Sunday). There will be ongoing presentations in the surgeon's tent and in the field hospital after each battle.

Visitors will also enjoy horse-drawn wagon rides, military field music, tours of the elegant 1867 Washburn estate, Victorian fashion shows, a period-correct sermon on temperance in the 1828 meeting house, blacksmithing, a historic dress-up tent, craft activities, one-room schoolhouse, old-fashioned games, guided nature walks, farm life in Norlands farmer's cottage, and talks on Maine's Joshua Chamberlain, Civil War firearms, and more.

On Saturday night, a gala affair begins at 4pm with dance lessons in the easy and fun country dance style. At 4:30pm witness a Civil War era period wedding, reenacted by members of the 3rd ME Company A. Celebrate with the newlyweds at a Pig Roast at 5:00pm, prepared fresh by Valley View Farm of Auburn. To purchase tickets for the pig roast, visit www.norlands.org/6th-

Join us for our 15th Anniversary

KINGFIELD POPS

Saturday, June 24, 2017
 Gate opens at 4:30 PM at the Kennedy Farm • Kingfield, Maine

The Bangor Symphony Orchestra conducted by Lucas Richman
 with guests Sultans of String
 And featuring Ghost of Paul Revere
 The Jason Spooner Band • Maine Youth Rock Orchestra
 Lula Wiles • The Western Mountain Trash Can Band

Tickets \$20 until May 15
 \$25 until gate opens,
 \$30 at gate
 17 and younger FREE

spragueandcurtis.com

6 2 3 . 1 1 2 3

75 Western Ave. • Augusta, ME

MANCHESTER-COBBOSEE LAKE – Incredible location, spectacular lake/westerly/sunset views, gorgeous yard/level lawn to water, granite lined waterfront w/beach, & fabulous custom built 2500' +/- square feet, 3 BR, 3.5 BA expandable cape. Open interior, spacious kitchen w/island, formal lakeside LR/DR w/fireplace/WS/HW floors & a wall of windows. 1st floor master suite.

#1307818 \$1,475,000

WINTHROP-Price Reduced – One of the best lots on COBBOSSEE LAKE!! Incredible views looking down the whole lake! Totally level lot w/210' of deep water frontage. The home is year round that has 3BR & 1.5BA. Updates include windows, siding & roof. Diningroom has a Fieldstone fireplace with woodstove insert. FR in the basement has a woodstove. Great Bass fishing & close to the Country Club. **#1300700 \$449,000**

WINTHROP-ANNA BESSACOOK LAKE – Meticulously kept 3BR year round home w/spectacular lake views. New kitchen w/granite, open interior w/lots of windows, fabulous lake views from most rooms. Newer windows, metal roof, vinyl siding & more. Nice basement storage/workshop. Front lawn area open to lake. Oversized 1 car garage. Convenient location, easy access, dock. **#1303050 \$279,900**

NEW LISTING-MANCHESTER– Lovely 4BR, 1.5BA Colonial in Gardencrest neighborhood. Pretty lot, spacious yard. Bright & airy interior. Hardwood fls throughout. Front to back LR w/fireplace/woodstove, Formal DR or den, half BA, & kitchen w/breakfast nook. 4BR's up w/remodeled bath. Full daylight basement w/mostly finished rec room w/hearth & woodstove. 2 car garage. Great neighborhood, a wonderful home. **#1310228 \$179,000**

READFIELD-MARANACOOK LAKE –Beautiful 3-4 BR Readfield home w/shared lake access/beach. Nice layout, LR w/fireplace, formal DR, some hardwood floors, 1st fl den/office, lovely breezeway family room w/skylights & glass doors to back deck, 2 car w/overhead storage, more. Spacious yard, lovely area, nice neighborhood, good schools. **#1219174 \$229,000**

EMBDEN-EMBDEN POND– Yr round home on beautiful Emden Pond. Great lake views from the LR/DR areas. Oak hardwood floors & cathedral ceiling in the LR. Spacious Oak kitchen. Offering 3BR, 2 full BA and FR. Sits right on the water! **#1298036 \$165,000**

LITCHFIELD-COBBOSEE STREAM– Wonderful piece of land in Litchfield. Wooded parcel goes to Cobbossee Stream which is just a short distance to Pleasant Pond. Wonderful lot to build a home. Driveway is already in place. Lots of privacy. Short distance to I-95, Maine Turnpike. **#1293181 \$75,000**



15th Alabama Co. G Camp of Instruction at Norlands May 2017

rally-for-norlands.html or call the Norlands at 207-897-4366. At 6:00pm, join in a lively gala barn dance with twirling hoop skirts, uniformed reenactors, and fiddlers of The Racket Factory. The contra dance is free with the purchase of a supper ticket or general event admission; otherwise a \$5 donation is suggested.

History exhibits and demonstrations of traditional crafts take place on Norlands’ picturesque front lawn. Participating vendors include AgNO3 Lab Tintype Portraits with Cole Caswell, Phoenix Pottery with Sarah Delaney, Shaky Barn Farm Gardens, Malbons Mills Blacksmith Shop, Forrest Bonney Handcrafted Furniture, Creative Basketry by Diane Wheeler, BaahHumdBuzz Farm Soaps with Karen Shumac, Good Tydden Farm with Noni Badershall, crocheting and paper craft with

Stamping with Corinne, and historical displays by Androscoggin Historical Society, Jay Historical Society, Lillian Nordica Homestead Museum and Minot Historical Society.

The Jay-Livermore Falls Lions Club will serve hamburgers, hot dogs, French Fries, and drinks on Saturday. Other lunch and snack items will be for sale on Sunday, while supplies last. Visitors are welcome to bring a picnic lunch and enjoy the beautiful grounds.

Experience the sights, sounds, and smells of the Civil War Era. There are plenty of hands-on history activities for all ages during two days of living history fun at the Norlands!

Gates open at 9:00 a.m. daily. Daily rate: \$12 adult; \$7 for children age 12 and under. Weekend pass: \$18 adult; \$11 for children age 12 and under.

To Benefit Friends of the Belgrade Library
A staged reading from the screenplay

Sunday
July 2, 2017
7-8:30 pm
Tickets \$10

In
THE
MOON’S
SHADOW

Featuring lead actors Debra Lord Cooke and Elissa Piszel
Q&A with director Alvin Case
Followed by refreshments

Belgrade Community Center for All Seasons
1 Center Drive, Belgrade Lakes, Maine

Advance tickets available for purchase at the Belgrade Public Library and the evening of the presentation at the door.

Free for ages 5 and under. Enter the event at the admission gate located behind the church. Parking is in the field, across the street from the church. For the safety and comfort of all animals and visitors, there are no dogs or other pets allowed on the property during Rally for Norlands. Service animals are the exception.

Rally for Norlands is made possible with the generous support of Franklin Savings Bank, Prentiss & Carlisle, ReEnergy Livermore Falls LLC, Main-Land Development Consultants Inc., Payroll Management Inc., and United Insurance-Shiretown Agency.

Please visit the Norlands website: www.NORLANDS.org/6th-rally-for-norlands.html for more details and the schedule of activities. The Norlands is located at 290 Norlands Road in Livermore.

Original Artwork Designed by Nate Tremé

20th Annual
MIFF
Maine International Film Festival
July 14-23, 2017
miff.org

Colby Waterville Creates! MPBN MAINE FILM CENTER

At Golden Pond, we have been handcrafting and managing personalized investment portfolios which reflect the values of Maine families and nonprofits for over 25 years.

GOLDEN POND
WEALTH MANAGEMENT

129 Silver St, Waterville, ME Phone: (207) 873-2200
www.goldenpondwealth.com

Securities offered through LPL Financial, Member FINRA/SIPC



Your own little island of

FUN

**LARGEST
SHOREMASTER
DISTRIBUTOR
in the
COUNTRY**

Improve your lake shore living experience with a **SHOREMASTER SWIM RAFT**. Kids and adults alike will enjoy years of fun and treasured memories.

We Cover The Waterfront.

SHOREMASTER

SWIM RAFTS

90" x 114" Poly Swim Raft – Poly Deck - Yellow or Gray	\$1,169
8'x8' Aluminum Swim Raft Cedar Deck	\$1,629
8'x8' Aluminum Swim Raft Aluminum Deck	\$2,059
8'x8' Aluminum Swim Raft White Aluminum	\$2,139
Rip Raft – Tan or Orange	\$879

Ladder sold separately

3 step pivot ladder	\$289
4 step pivot ladder	\$339
5 step pivot ladder	\$399
Nylon Rope Ladder (Rip Raft only)	\$57
2 step Rip Raft Ladder	\$215

Toll-free 1-866-HAMMOND

Hammond Lumber Company

Visit us online at
www.hammond-shoremaster.com
for a 82-page Product Planning
Guide & Price List.

AUBURN • BANGOR • BELGRADE • BOOTHBAY HARBOR • BRUNSWICK • DAMARISCOTTA
FAIRFIELD • FARMINGTON • GREENVILLE • PEMAQUID • PORTLAND • SKOWHEGAN • WILTON

Lakepoint

REAL ESTATE

207.495.3700

221 Main St.,
Belgrade Lakes, ME 04918

www.belgradelakepoint.com



NEW LISTING

COBBOSSEE LAKE, LITCHFIELD: Beautiful sprawling home on 5.3 acres with 206' Lakefront and over 4700 sq. ft living space. You really need to see this gorgeous home! **\$1,200,000** #1306652



200' LONG POND – ISLAND LOT: Private large waterfront. Serene views of surrounding lands. Driveway entrance in place. Septic Design for 6BR on file. Close to Belgrade Lakes Village. **\$229,000** #1303830

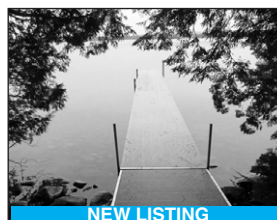


NEW LISTING

LONG POND, BELGRADE: 180' +/- Lakefront on quiet lower Long Pond. Quaint A-Frame with fabulous views in a private location. Cottage needs some work and will be sold "as is". Use this cottage or build a new one. #1308896 **\$250,000**



ALBION: 3BR/2BA with magnificent views. Open concept, 3 bay garage, radiant heat throughout, front and back porches all on 3.16 acres. **\$269,900** #1299434



NEW LISTING

GREAT POND, BELGRADE: 60+ Acres. 75' Great Pond. Swimming, fishing, water skiing, tubing and trips to Belgrade Lakes Village by boat. **\$299,000** #1308516



NEW LISTING

ROME: GREAT INVESTMENT! Immaculate 3BR Double-wide on 3 acres. Convenient location to Augusta, Waterville, Farmington. Country living at its best. #1302343 **\$125,000**



NEW PRICE

VIENNA: Contemporary on 4 acres. 400' +/- brook runs through right edge of property. Deck, patio, porch, 3 car att heated garage. #1255120 **\$199,900**



LONG POND ACCESS, BELGRADE: 2BR, 2BA, well maintained Modular. Short walk to lake access or Village. New 1 car garage. Nice setting. #1287679 **\$89,000**



ROME: Well insulated and maintained 2BR/1.5BA mobile on 12 acres offering great views. Away from the road with tree line as buffer. #1292080 **\$72,500**

GRANITE HILL ESTATES

Part of:
MaineGeneral Health



Retire your way. Today!

In a community that cares.

Now's the time to join the family at **Granite Hill Estates**, central Maine's premiere continuing care retirement community and part of **MaineGeneral Health**. Call 207-626-7786 or toll free 1-888-321-1119 today schedule a tour. Offering an impressive menu of amenities:

- Spacious cottage homes and apartments
- Elegant full-service dining plan
- Maintenance and housekeeping services
- Scheduled courtesy transportation
- Social, cultural and educational programs
- Indoor swimming pool complete with hot tub
- Cozy reading room, library and bank
- Attractive game, billiard, and meeting rooms
- Fitness center with an on-site fitness coordinator
- Convenient hair salon, massage spa and meditation room
- Wooded walking trails throughout our 135 acre campus

Awarded
Highest Honors
for
**Resident
Satisfaction**

Holleran National
Senior Living Survey



email: info@granitehillestates.com

60 Balsam Drive, Hallowell, ME 04347

207-626-7786

1-888-321-1119

granitehillestates.com

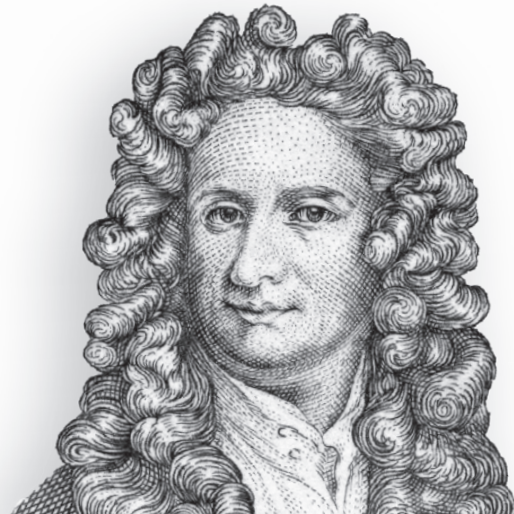
What goes up must come down?

Avoid fluctuating interest rates.

Lock in a low fixed rate
mortgage today.

And you could save
\$500 off closing costs.

Apply now at
skowhegansavings.com
or call **1.800.303.9511**



*Offer good for new mortgages from May 1st to July 31st, 2017. Not applicable for Maine State Housing. Cannot be combined with any other offer. All loans are subject to credit approval.



**Skowhegan
Savings** FDIC

Straight Talk. Fair Deals.