

3-28-2011

# Maine Combined Sewer Overflow 2010 Status Report

Maine Department of Environmental Protection

Maine Bureau of Land and Water Quality

Follow this and additional works at: [https://digitalmaine.com/lwq\\_docs](https://digitalmaine.com/lwq_docs)

---

## Recommended Citation

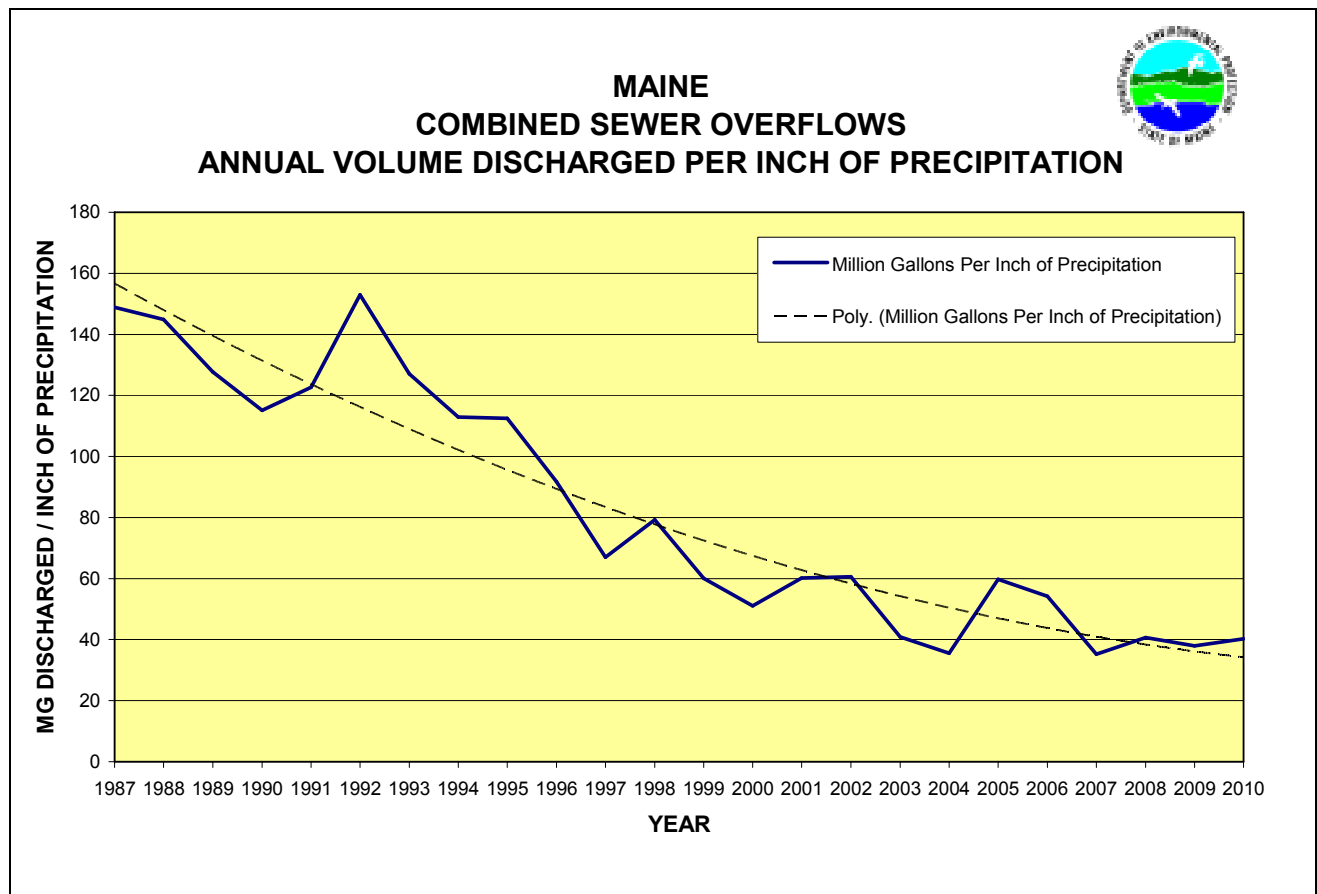
Maine Department of Environmental Protection and Maine Bureau of Land and Water Quality, "Maine Combined Sewer Overflow 2010 Status Report" (2011). *Land and Water Quality Documents*. 10.  
[https://digitalmaine.com/lwq\\_docs/10](https://digitalmaine.com/lwq_docs/10)

This Text is brought to you for free and open access by the Department of Environmental Protection at Digital Maine. It has been accepted for inclusion in Land and Water Quality Documents by an authorized administrator of Digital Maine. For more information, please contact [statedocs@maine.gov](mailto:statedocs@maine.gov).

# MAINE COMBINED SEWER OVERFLOW 2010 STATUS REPORT

Date: March 28, 2011  
Document No.: DEPLW0972C-2011

Prepared by:  
David P. Breau, P.E.  
CSO Coordinator  
Division of Water Quality Management  
Bureau of Land and Water Quality Control  
Department of Environmental Protection



## **TABLE OF CONTENTS**

INTRODUCTION .....	1
WHAT ARE CSOs?.....	1
WHAT ARE THE IMPACTS OF CSOs? .....	2
WHAT IS A CSO COMMUNITY? .....	2
WHERE DID WE START? .....	3
WHAT IS BEING DONE TO ABATE CSO DISCHARGES?.....	3
WHERE ARE WE NOW? – 2010 STATUS.....	4

## **TABLES**

MAINE - CSO COMMUNITY LIST .....	8
MAINE - CSO COMMUNITY FLOW DATA .....	9
MAINE - CSO COMMUNITY ANNUAL NUMBER OF CSO DISCHARGE EVENTS .....	10
MAINE – CSO ANNUAL WATERSHED FLOWS .....	19

## **CHARTS**

MAINE – STATEWIDE COMBINED SEWER OVERFLOW VOLUME DISCHARGED .....	11
MAINE – STATEWIDE COMBINED SEWER OVERFLOW ANNUAL NUMBER OF DISCHARGE EVENTS ...	12
MAINE – STATEWIDE NUMBER OF COMBINED SEWER OVERFLOW OUTFALLS .....	13
MAINE COMBINED SEWER OVERFLOWS	
ANNUAL VOLUME DISCHARGED PER INCH OF PRECIPITATION .....	14
MAINE YEARLY CSO VOLUMES AND PRECIPITATION .....	15
2010 CSO FLOW COMPARISON - PIE CHART .....	16
2010 CSO FLOW COMPARISON BY COMMUNITY - BAR CHART .....	17
2010 CSO WATERSHED FLOWS - PIE CHART .....	18

## **INTRODUCTION**

The purpose of this report is to inform the Combined Sewer Overflow (CSO) Communities and the general public on the status of the CSO program in Maine.

This information is compiled from various documents and reports submitted to the Maine Department of Environmental Protection by the CSO Communities (City/Town/District) or their consultants on their behalf. A majority of the information comes from the CSO Master Plans (a.k.a. Long Term Control Plans), Sewer System Evaluation Studies, Infiltration/Inflow Reports, Annual CSO Progress Reports, and general correspondence.

At the start of any CSO Community's abatement program, initial flow data was collected to estimate the existing discharge volumes and frequencies, define the problems, and establish a corrective course of action. This often occurred over a relatively short period of time (a year or two) and may not have captured as many good wet weather events as desired. However, this data was the best available information at the time and established the overflow baselines that are used within this report. Since then, CSO flow monitoring plans have continued to improve and overall data reliability has increased, giving the program better data for specific yearly wet weather patterns.

## **WHAT ARE CSOs?**

- Combined Sewer Overflows (CSOs) are discharges of untreated wastewater from municipal sewerage systems that carry mixtures of sanitary sewage, storm water, and sometimes industrial wastes.
- They occur mostly during and after rain events or snowmelt. Flows within the combined sewer system during these wet weather events can be as high as fifty (50) times the normal dry weather flows.
- Large volumes of water entering the combined sewer system (CSS) through catch basins, old and leaky pipes, roof drains, cellar drains, sump pumps, and other sources cause the capacity of the system to be exceeded.
- Hydraulic relief points within the CSS allow the excess flows to be discharged. These relief points are generally near pump stations and river crossings.
- Excess volumes of combined sewage can also cause treatment facility upsets, street flooding, and back-ups into basements.

## **WHAT ARE THE IMPACTS OF CSOs?**

- Currently in Maine there are 32 communities (towns or cities) with CSO discharge points in their sewerage systems (down from an original 60). These communities collectively have 164 individual CSO discharge points (down from an original 340).
- The frequency of discharges varies greatly from community to community, ranging from seldom to occurring in response to all but the smallest rain storms.
- In large communities hundreds of millions of gallons per year of untreated combined sanitary sewage and storm water may be discharged. Statewide, approximately 1.5 to 2.5 billion gallons are discharged annually from CSOs (down from an estimated original volume of 6.2 billion gallons).
- CSOs discharge untreated combined sewage to receiving waters that vary in size from the ocean and large rivers to small streams and drainage creeks.
- Water quality is impaired by the addition of floatables, bacteria, and sometimes industrial pollutants.
- Shellfishing areas and beaches can be closed and drinking water supplies threatened.

## **WHAT IS A CSO COMMUNITY?**

- CSO Communities are permitted dischargers of combined sanitary and storm waters. The Department of Environmental Protection issues CSO permittees a wastewater discharge license that requires them to implement EPA's Nine Minimum Control Best Management Practices (BMPs), develop a Long Term Control Plan (LTCP) (a.k.a. Master Plan) to eliminate or abate their overflows, and finally to implement the plan and bring them into compliance with EPA's April 8, 1994 Combined Sewer Overflow (CSO) Control Policy.
- Special Conditions in their Maine Pollutant Discharge Elimination System (MEPDES) permit requires all CSO permittees to submit an Annual CSO Progress Report to the Department for the previous year by March 1st.
- The Progress Report documents the Community's efforts to comply with the Nine Minimum Controls, and collects pertinent fiscal and logistical information about their CSO abatement program. This information is used to track their CSO abatement progress and gather state-wide information on the CSO program and fiscal needs.

## **WHERE DID WE START?**

- The CSO movement started in 1989 with the clarification of the Clean Water Act through the publication of the National CSO Control Strategy by the Environmental Protection Agency (EPA).
- At that time the State had about 60 CSO Communities that discharged an estimated 6.2 billion gallons of combined wastewater and storm water during wet weather events.
- Statewide it was estimated that overflow events happened approximately 1,700 times a year through approximately 340 different CSO outfalls.
- On April 19, 1994 EPA issued a national policy statement entitled “Combined Sewer Overflow (CSO) Control Policy.” This policy provides guidance to permittees with CSOs, and State permit and water quality standards authorities on coordinating the planning, selection, and implementation of CSO controls that meet the requirements of the Clean Water Act (CWA).
- In February 2000, the Maine Department of Environmental Protection Chapter 570 Rules, entitled “Combined Sewer Overflow Abatement,” became effective. This chapter establishes procedures for CSO evaluation, preparation of an abatement plan, and sets forth minimum controls to reduce CSOs while long-range plans are being completed.
- In December 2000, as part of the Consolidated Appropriations Act for Fiscal Year 2001 (P.L. 106-554), Congress amended the Clean Water Act (CWA) by adding Section 402(q), commonly referred to as the Wet Weather Water Quality Act of 2000. Section 402(q) requires that each permit, order, or decree issued pursuant to the CWA for a discharge from a municipal combined sewer system shall conform to the CSO Control Policy.

## **WHAT IS BEING DONE TO ABATE CSO DISCHARGES?**

- All of Maine’s CSO Communities have completed or are working on comprehensive CSO studies or facilities plans. These plans are often referred to as Master Plans (MPs) or Long Term Control Plans (LTCPs). These documents define the magnitude of the CSO discharges, their impacts on the environment, and evaluate a range of abatement control alternatives and their financial impact.
- Abatement projects have reduced untreated discharges in all of the CSO Communities. A number of communities have eliminated their CSO discharges and are no longer licensed to discharge untreated combined sewage during wet weather.

- Statewide, CSO Communities report that they have invested a total of \$375.6 million in CSO abatement (\$26.0 million in 2010) and anticipate the CSO needs for the next five years to be \$141.3 million. Beyond that, the expected need to bring them into compliance with the CSO Control Policy is an additional \$300+ million.

## WHERE ARE WE NOW? – 2010 STATUS

- 1) Maine started 2010 with 33 CSO Communities and finished the year with 32. The City of Rockland, which is responsible for Rockland's sewer system, completed its CSO abatement program and will not be re-licensed as a CSO Community in 2011. A complete listing of Maine's CSO Communities, their number of CSO outfalls and the outfall receiving waters is listed on page 8.
- 2) The volume of combined sewage discharged statewide in 2010 was reported at 2.00 billion gallons. The table on page 9, Maine CSO Community Flow Data, contains a historic listing of the yearly overflows from each CSO Community. The 2010 CSO Flow Comparison pie chart on page 16 and the 2010 CSO Flow Comparison by Community bar chart on page 17 are graphical comparisons of the overflow volumes between the CSO Communities.
- 3) In 2010, the CSO Communities reported a total of 606 overflow events. This total is arrived at by summing the number of days that each CSO Community experienced an overflow event. An overflow event is any calendar day in which one or more CSOs within a community discharge. The table on page 10, Maine CSO Community Annual Number of CSO Discharge Events, contains a historic listing of the annual number of CSO discharge events for each CSO Community.
- 4) Twenty-eight (28) of the 32 CSO Communities reported experiencing at least one combined sewer overflow discharge in 2010, while five (5) reported no overflows.
- 5) In 2010, twelve (12) of the communities reported discharging less in 2010 than in 2009, fifteen (15) reported discharging more, while three (3) reported no change with a zero discharge. The maximum number of days that overflow events were reported from a single community was 79. The average (mean) number of discharge events for all of the communities was 18 and the median was 12. Additional information is given in the table on page 10.
- 6) The volume and frequency of CSO discharges varies from one wet weather event to another based on existing groundwater conditions, frozen or thawed ground, snowmelt, and rainfall volume, duration, and intensity. To evaluate abatement progress it is best to look for an overall trend in reduction, versus trends from year to year. The chart on page 11, Combined Sewer Overflow Volume Discharged, illustrates an overall downward trend in the CSO volumes being discharged annually. Since 1989, the volume of combined sewage discharged has decreased by approximately 60 - 70%. This is stated as a range

because of the correlation of overflow volumes to variations in annual weather patterns.

- 7) Similarly, the chart on page 12, Combined Sewer Overflow Annual Number of Discharge Events, shows a downward trend in the number of overflow days per year. Since 1989, the number of overflow days has decreased by approximately 55 - 65%, once again stated as a range.
- 8) In 2010 Maine CSO Communities reduced the total number of CSO discharge locations by seven (7), down from 171 to 164. Reductions were in the communities of: Augusta – Greater Augusta Utility District (1), Brewer (1), Lewiston (2), Portland (2), Saco (1), and the removal of Rockland (2) from the CSO Program. There were nine discharge points removed, however, two new CSO discharge locations were added this year – one in Lewiston and one in Winslow, which were previously unknown. The chart on page 13, Maine – Statewide Number of Combined Sewer Overflow Outfalls, shows a 50% reduction in the number of CSO outfalls since 1989.
- 9) Trying to compare CSO abatement progress from year to year is difficult because of the number of conditions that influence the volume and frequency of overflows, not the least of which is yearly precipitation patterns. To partially compensate for the fluctuation in yearly precipitation patterns, the total volume of combined sewage discharged has been unitized by taking into consideration the average annual precipitation amount for the CSO communities. The average annual precipitation amount for all of the communities was calculated by applying a weighted precipitation amount, based on their percentage of the total statewide overflow volume, to each community's annual precipitation amount and then summing the total. The chart on page 14, CSO Annual Volume Discharged Per Inch of Precipitation, illustrates this and shows a continual downward trend in the volume of combined sewage discharged per inch of annual precipitation. Since 1989, overflow volumes have decreased from approximately 149 million gallons per inch of precipitation to 35 - 40 million gallons per inch of precipitation, 40 million in 2010. Although this type of analysis is rough, it is a good indicator of the CSO abatement progress that is being made.
- 10) The average annual precipitation for all of Maine's CSO Communities is approximately 45 inches. In 2010, the annual precipitation for the CSO Communities varied significantly from 30 - 65 inches. CSO Communities in northern and central Maine experienced normal or slightly below normal precipitation (down as much as 30%) while areas of coastal Maine experienced higher than normal precipitation amounts (up as much as 45%). The Yearly CSO Volumes and Precipitation chart on page 15 shows a comparison between annual CSO volumes and yearly precipitation. The graph shows that CSO volumes tend to follow the yearly ups and downs in precipitation levels. The chart shows a widening gap between the yearly precipitation amount and the yearly volume of combined sewage discharged. This widening gap clearly



indicates that the CSO abatement is being accomplished and that overflow volumes are becoming less influenced by precipitation events.

- 11) 2010 was another above average precipitation year (50"), but was less than the previous year's weighted average of 54". As a result of ongoing CSO abatement work and lower precipitation amounts, the statewide volume of CSO discharges decreased by 54 million gallons or 2.6%, from 2.058 to 2.004 billion gallons in 2010.
- 12) The CSOs from the City of Portland and Portland Water District in Portland comprised approximately 39% of the State's total overflow volume in 2010; see the CSO Flow Comparison Pie Chart on page 16. Given the large impact that Portland's data has on the State's total, it might be prudent to look at the rest of the state without utilizing Portland's data. After removing Portland's overflow data from the state total, the overflow volume for the remaining CSO Communities increased by 3.25% from 2009 to 2010, 1.18 to 1.22 billion gallons respectively.
- 13) In 2010, the top twelve (12) dischargers accounted for approximately 98% of the total volume of combined sewage discharged in the State, while the remaining sixteen (16) communities that discharged accounted for 2%. See the CSO Flow Comparison Pie Chart on page 16.
- 14) Abatement of CSOs is a costly endeavor. To date Maine CSO Communities have reported expending \$375.6 million implementing their CSO abatement projects. In the 2010 Annual CSO Progress Reports submitted to the State, these communities reported expending \$26.0 million on abatement work in 2010. It is estimated that the future needs of these communities to complete their CSO abatement plans totals \$300+ million, in 2010 dollars.
- 15) CSO abatement progress can not be measured solely by comparing the volumes discharged from one year to the next. The reason is that the volume discharged is influenced by variations in precipitation amount, intensity and timing, the rate of snow melt, frozen or thawed ground, and existing groundwater levels. Even given the same annual precipitation, no two years would result in the same volume of CSO discharges.
- 16) The relationship between the annual precipitation and the annual volume of combined sewage discharged is not linear. As a general rule, as precipitation levels increase, the volume of combined sewage discharged also increases per inch of precipitation. Simply put, once the capacity of the combined sewer system is reached, any additional rainfall or snowmelt overflows the already inundated system.
- 17) Different wet weather conditions and precipitation patterns also affect individual CSO Communities differently. This is due mostly to the make up of the sewer system, the number of catch basins connected, the area of impermeable surface, and the specific hydraulic restriction(s) causing the overflows, to name just a few. The overflows in some communities are more susceptible or responsive to intense summer storms, while in other communities it might be

high ground water. Direct comparisons between various communities should not be made.

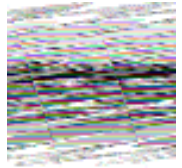
- 18) It is well established that CSOs can and do have impacts on beach and shellfish closures. Stating that a specific CSO event or series of events is responsible for a specific closure is more difficult and will not be attempted in this report. In some areas there are a number of other factors that might enter into a beach or shellfishing area being closed. These are, but not necessarily limited to, urban storm water runoff, malfunctioning septic systems, domestic and non-domestic animal waste, agricultural runoff, and bathers, to name just a few. What is assessed in the Annual Reports is which beach and shellfishing areas may be impacted by the CSOs.

In 2010, five (5) CSO Communities listed ten (10) beach areas that could be impacted by their CSO discharges. They were: Bar Harbor (Town Beach off Town Pier & Hulls Cove); Biddeford (Hills Beach, Biddeford Pool & Camp Ellis); Cape Elizabeth (Cliff House Beach, Casino Beach & Fort Williams Park); Portland (East End Beach); and South Portland (Willard Beach). In 2010, the following beach closures or advisories were reported at several of the beaches, though not specifically identified as being caused by CSO activity (Bar Harbor – Town Beach, 1 advisory; Bar Harbor – Hulls Cove, 1 advisory; Portland – East End, 4 closures, 5 advisories; South Portland – Willard Beach, 7 advisories).

In 2010, five (5) CSO Communities listed shellfishing areas that were closed in their area (Bar Harbor, Calais, Machias, Portland & South Portland). Three (3) of these communities (Bar Harbor, Machias and Portland) reported that the closures were caused in whole or in part by CSO activity.

- 19) The chart on page 18 – 2010 CSO Watershed Flows, shows a graphical representation of the CSO volume discharged by watershed. In 2010, Casco Bay received approximately 42% of the statewide CSO volume discharged, followed by Penobscot River at 31%, the Androscoggin River at 15%, the Saco River at 6%, the Kennebec River at 4%, and the St. Croix River at 1.5%. Discharges to the St. John River, Frenchman Bay, the Machias River, and Penobscot Bay account for the remaining 0.5 - 1% of combined sewer overflow volume. The Table on page 19 – CSO Annual Watershed Flows, shows the actual CSO volumes by discharger associated with the individual watersheds for 2010 as well as for the previous four years.

# MAINE – COMBINED SEWER OVERFLOW (CSO) COMMUNITY LIST (As of December 31, 2010)



	COMMUNITY/PERMITTEE	CSOs	Number of CSOs & Receiving Water
1.	AUBURN SEWERAGE DISTRICT .....	3	3-Androscoggin Rv.
2.	BANGOR .....	7	3-Kenduskeag Str., 4-Penobscot Rv.
3.	BAR HARBOR (Hulls Cove) .....	1	1-Frenchman Bay
4.	BAR HARBOR (Main Plant) .....	3	2-Frenchman Bay, 1-Eddie Brook
5.	BATH .....	4	4-Kennebec Rv.
6.	BELFAST .....	2	2-Passagassawakeag River/Belfast Harbor
7.	BIDDEFORD .....	10	9-Saco Rv., 1-Thatcher Bk.
8.	BREWER .....	5	4-Penobscot River, 1-Sedgeunkendunk Str.
9.	BUCKSPORT .....	1	1-Penobscot Rv.
10.	CALAIS .....	5	4-St. Croix Rv., 1-Landing Brook
11.	CAPE ELIZABETH – Ottawa Road PS (Co-Permittees - So. Portland, PWD, & Cape Eliz.)	1	1-Atlantic Ocean
12.	FAIRFIELD .....	2	2-Kennebec Rv.
13.	GARDINER .....	1	1-Kennebec Rv.
14.	GREATER AUGUSTA UTILITY DISTRICT (GAUD) (Includes Hallowell Sanitary Sewers & CSO) ...	22	4-Bond Bk., 1-Kennedy Bk., 16-Kennebec Rv., 1-Whitney Bk.
15.	HAMPDEN .....	1	1-Souadabscook Str.
16.	KENNEBEC SANITARY TREATMENT District (KSTD)	3	3-Kennebec Rv.
17.	LEWISTON .....	20	8-Androscoggin Rv., 1-Gully Bk., 1 -Hart Bk., 10-Jepson Bk.
18.	LEWISTON-AUBURN Water Pollution Control Authority (LAWPCA) .....	1	1-Androscoggin Rv.
19.	MACHIAS .....	2	2-Machias Rv.
20.	MADAWASKA .....	2	2-St. John Rv.
21.	MECHANIC FALLS SANITARY DISTRICT .....	3	3-Little Androscoggin Rv.
22.	MILFORD .....	1	1-Penobscot Rv.
23.	OLD TOWN .....	3	2-Penobscot Rv., 1-Stillwater Rv.
24.	ORONO .....	1	1-Penobscot Rv.
25.	PARIS UD .....	1	1-Little Androscoggin Rv.
26.	PORTLAND – CITY .....	11	6-Back Cove, 2-Capiscic Bk., 2-Portland Harbor., 1-Nason Bk. (marsh)
27.	PORTLAND – PORTLAND WATER DISTRICT (PWD)	21	9-Back Cove, 3-Casco Bay, 7-Fore Rv., 2- Portland Harbor
28.	RANDOLPH .....	1	1-Kennebec Rv.
29.	SACO .....	4	1-Bear Bk., 3-Saco Rv.
30.	SANFORD SANITARY DISTRICT .....	1	1-Mousam Rv.
31.	SKOWHEGAN .....	7	7-Kennebec Rv.
32.	SOUTH PORTLAND .....	6	1-Barberry Ck., 1-Fore Rv., 1-Calvery Pond., 2-Portland Hbr., 1-Long Creek
33.	WESTBROOK .....	5	5-Presumpscot Rv.
34.	WINSLOW .....	2	2-Sebasticook Rv.
35.	WINTERPORT SEWERAGE DISTRICT .....	1	1-Penobscot Rv.
TOTAL CSOs		164	

35 CSO Permits, permitting 32 CSO Towns/Cities

Two or more permits in one CSO Town/City

Two CSO Towns/Cities covered in one permit

**Bold** = 10 communities with sewer system only. Sewers discharge to a POTW controlled by another entity.

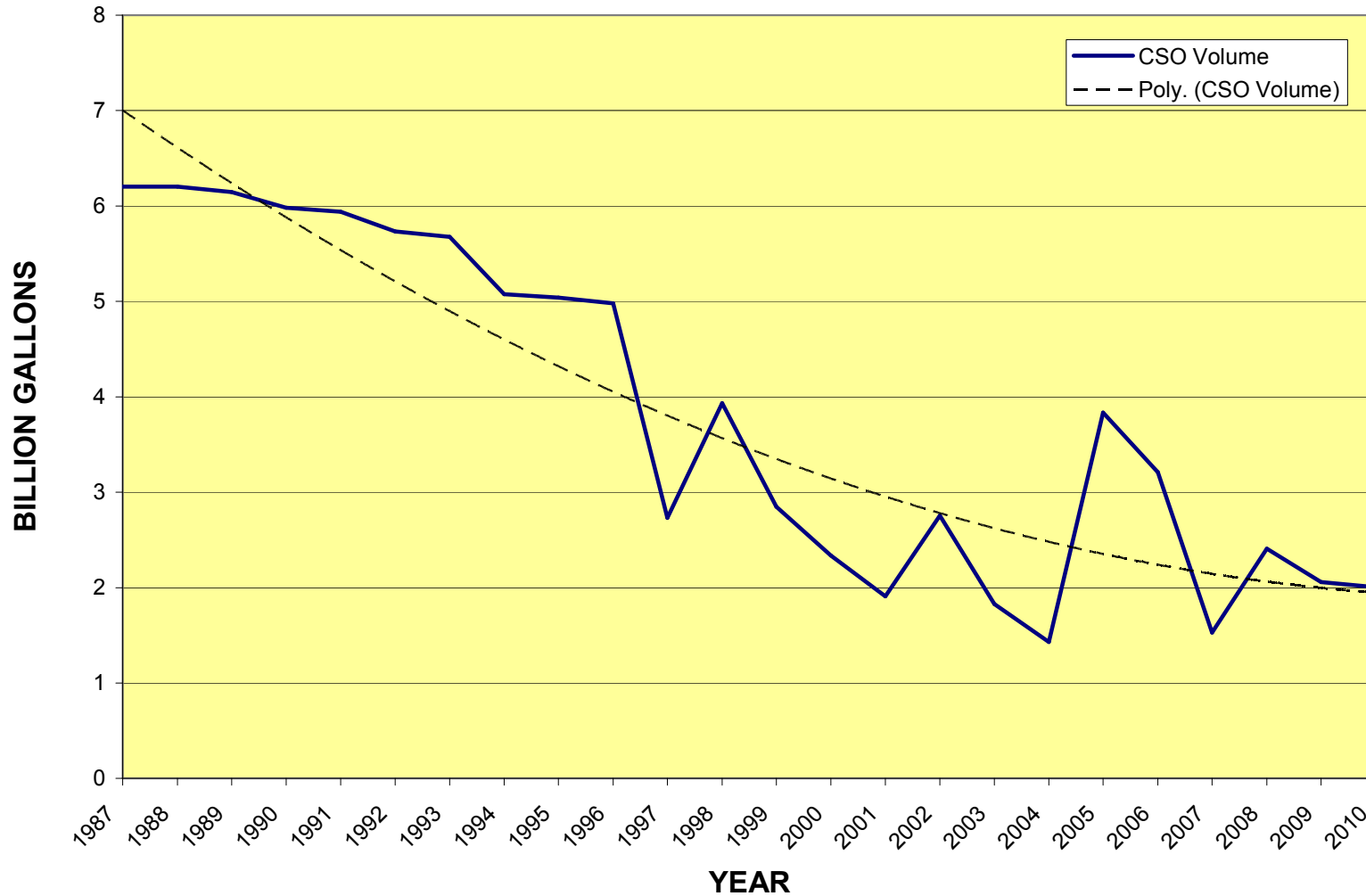
MAINE CSO COMMUNITY FLOW DATA

		Annual Volumes (Gallons)																							
No longer a CSO Community																									
Community	NPDES Permit No.	1987	1988	1989	1990	1991	1992	1993	1994	1995	1996	1997	1998	1999	2000	2001	2002	2003	2004	2005	2006	2007	2008	2009	2010
Auburn S.D.	ME0100005	99,720,000	99,720,000	99,720,000	99,720,000	99,720,000	99,720,000	99,720,000	99,720,000	99,720,000	99,720,000	99,720,000	99,720,000	78,340,742	102,297,387	199,674,605	66,307,631	19,197,928	4,687,316	37,155,818	28,936,137	23,622,547	23,984,272	19,440,841	12,952,500
Bangor	ME0100781	635,000,000	635,000,000	635,000,000	525,000,000	533,000,000	386,000,000	384,000,000	403,000,000	416,000,000	344,000,000	317,730,000	329,000,000	285,910,000	230,190,000	88,430,000	161,000,000	204,000,000	193,870,000	303,160,000	272,750,000	150,580,000	378,640,000	347,360,000	389,300,000
Bar Harbor	ME0101214 & ME0102466	32,000,000	32,000,000	32,000,000	32,000,000	32,000,000	32,000,000	32,000,000	31,900,000	14,700,000	14,700,000	13,160,915	1,919,628	17,627,806	4,730,155	384,531	2,729,389	2,845,621	290,133	13,661,958	5,102,820	8,719,436	12,601,889	11,935,337	6,930,405
Bath	ME0100021	600,000,000	600,000,000	600,000,000	600,000,000	600,000,000	600,000,000	600,000,000	52,600,000	37,000,000	37,000,000	37,000,000	37,000,000	37,000,000	5,910,364	6,173,760	4,341,921	16,496,467	6,055,666	60,338,026	36,105,688	20,783,335	24,383,599	11,323,060	12,930,203
Belfast	ME0101532	736,000	736,000	736,000	736,000	736,000	736,000	736,000	736,000	736,000	736,000	736,000	736,000	736,000	736,000	736,000	736,000	736,000	736,000	736,000	736,000	736,000	736,000	736,000	736,000
Biddeford	ME0100048	400,000,000	400,000,000	400,000,000	400,000,000	400,000,000	400,000,000	400,000,000	400,000,000	400,000,000	400,000,000	400,000,000	400,000,000	286,924,366	191,155,589	234,987,578	145,356,657	415,694,234	136,417,937	101,087,776	301,372,131	163,423,632	150,304,402	147,313,000	146,452,750
Brewer	ME0100072	750,000,000	750,000,000	750,000,000	750,000,000	750,000,000	750,000,000	725,000,000	725,000,000	725,000,000	725,000,000	725,000,000	725,000,000	210,670,800	423,644,459	322,168,651	243,176,051	417,536,641	509,412,078	279,830,419	592,984,187	247,538,580	231,283,607	289,560,294	229,270,683
Bucksport	ME0100111	53,000,000	53,000,000	53,000,000	53,000,000	53,000,000	53,000,000	53,000,000	53,000,000	53,000,000	53,000,000	53,000,000	53,000,000	53,000,000	53,000,000	53,000,000	53,000,000	53,000,000	53,000,000	53,000,000	5,546,501	20,000	0	0	0
Calais	ME0100129	42,000,000	42,000,000	42,000,000	42,000,000	42,000,000	42,000,000	42,000,000	42,000,000	42,000,000	42,000,000	42,000,000	42,000,000	42,000,000	42,000,000	42,000,000	42,000,000	42,000,000	42,000,000	26,280,000	5,290,000	42,140,000	20,409,850	22,060,520	18,989,779
Cape Elizabeth	ME0102806	5,400,000	5,400,000	5,400,000	5,400,000	5,400,000	5,400,000	5,400,000	5,400,000	5,400,000	5,400,000	5,400,000	5,400,000	5,400,000	5,400,000	5,400,000	5,400,000	5,400,000	5,400,000	5,400,000	5,400,000	5,400,000	5,400,000	5,400,000	5,400,000
Corinna S.D.	ME0100153	40,000,000	40,000,000	40,000,000	40,000,000	40,000,000	40,000,000	40,000,000	40,000,000	40,000,000	40,000,000	40,000,000	40,000,000	22,000	27,000	31,000	25,000	2,000	2,000	0	0	0	0	0	0
Dover-Foxcroft	ME0100501	16,000	16,000	16,000	16,000	16,000	16,000	16,000	16,000	16,000	16,000	16,000	16,000	16,000	16,000	16,000	16,000	16,000	16,000	16,000	16,000	16,000	16,000	16,000	16,000
East Millinocket	ME0100196	1,200,000	1,200,000	1,200,000	1,200,000	1,200,000	1,200,000	1,200,000	1,200,000	1,200,000	1,200,000	1,200,000	1,200,000	1,200,000	1,200,000	1,200,000	1,200,000	1,200,000	1,200,000	1,200,000	1,200,000	1,200,000	1,200,000	1,200,000	1,200,000
Fairfield	ME0102393	300,000	300,000	300,000	300,000	300,000	300,000	300,000	300,000	300,000	300,000	300,000	300,000	301,461	221,954	221,954	221,954	221,954	65,296	0	0	0	0	0	0
Fort Kent U.D.	ME0102369	3,000	3,000	3,000	3,000	3,000	3,000	3,000	3,000	3,000	3,000	3,000	3,000	3,000	3,000	3,000	3,000	3,000	3,000	3,000	3,000	3,000	3,000	3,000	3,000
Gardiner	ME0101702	44,000,000	44,000,000	44,000,000	44,000,000	44,000,000	44,000,000	44,000,000	44,000,000	44,000,000	44,000,000	44,000,000	44,000,000	43,948,000	7,843,400	8,278,600	6,487,000	11,528,900	13,149,700	5,113,000	46,616,000	10,269,400	2,487,000	5,000,000	1,380,000
Greater Augusta U.D.	ME0100013	72,554,000	72,554,000	72,554,000	72,554,000	72,554,000	72,554,000	72,554,000	72,554,000	72,554,000	72,554,000	72,554,000	72,554,000	1,053,717	3,411,410	72,554,222	5,615,140	2,705,324	2,191,067	7,089,337	3,881,421	26,553,055	14,539,424	10,000,000	48,965,215
Hallowell W.D. - 2008 GAUD	ME0101010	350,000	350,000	350,000	350,000	350,000	350,000	350,000	350,000	350,000	350,000	350,000	350,000	350,000	350,000	350,000	350,000	350,000	350,000	350,000	350,000	350,000	350,000	350,000	350,000
Hampden	ME0102512	1,201,000	39,600	389,000	797,500	282,875	265,834	1,703,766	493,399	528,980	1,716,002	106,355	113,282	1,474,767	1,218,000	0	262,900	0	858,175	341,948	2,438,706	385,734	1,136,649	2,209,107	0
Kennebec S.T.D.	ME0100854	2,500,000	2,500,000	2,500,000	2,500,000	2,500,000	2,500,000	2,500,000	2,500,000	2,500,000	2,500,000	2,500,000	2,500,000	436,994	399,843	3,088,240	3,043,421	421,162	0	858,175	341,948	2,438,706	385,734	1,136,649	2,209,107
Kittery	ME0100285	350,000	350,000	350,000	350,000	350,000	350,000	350,000	350,000	350,000	350,000	350,000	350,000	350,000	350,000	350,000	350,000	350,000	350,000	350,000	350,000	350,000	350,000	350,000	350,000
Lewiston	ME0100994	208,900,000	208,900,000	208,900,000	208,900,000	208,900,000	208,900,000	208,900,000	208,900,000	208,900,000	208,900,000	208,900,000	208,900,000	94,105,000	142,000,000	215,300,000	136,898,295	61,370,660	176,395,415	199,236,985	82,766,343	249,891,633	159,807,018	90,983,189	152,039,341
Lewiston-Auburn W.P.C.A.	ME0101478	480,000,000	480,000,000	480,000,000	480,000,000	480,000,000	480,000,000	480,000,000	480,000,000	480,000,000	480,000,000	480,000,000	480,000,000	480,000,000	480,000,000	480,000,000	480,000,000	480,000,000	480,000,000	480,000,000	480,000,000	480,000,000	480,000,000	480,000,000	480,000,000
Lincoln S.D.	ME0101796	2,400,000	2,400,000	2,400,000	2,400,000	2,400,000	2,400,000	2,400,000	2,400,000	2,400,000	2,400,000	2,400,000	2,400,000	1,216,350	86,982	2,411,050	349,276	1,057,000	0	0	0	0	0	0	0
Lisbon	ME0100307	600,000	600,000	600,000	600,000	600,000	600,000	600,000	600,000	600,000	600,000	600,000	600,000	600,000	600,000	600,000	600,000	600,000	600,000	600,000	600,000	600,000	600,000	600,000	600,000
Livermore Falls	ME0100315													0	0	0	0	0	0	0	0	0	0	0	0
Machias	ME0100323	7,000,000	7,000,000	7,000,000	7,000,000	7,000,000	7,000,000	7,000,000	7,000,000	7,000,000	7,000,000	7,000,000	7,000,000	963,952	1,184,000	690,000	0	722,293	2,533,245	2,124,118	6,646,222	3,008,025	2,263,720	2,328,905	4,073,938
Madawaska	ME 0101681	3,200,000	3,200,000	3,200,000	3,200,000	3,200,000	3,200,000	3,200,000	3,200,000	3,200,000	3,200,000	3,200,000	3,200,000	457,409	0	610,000	11,398	3,692	100,000	1,749,764	8,215,460	3,700,002	26,667,765	24,194,225	15,800,000
Mechanic Falls S.D.	ME0100391	18,000,000	18,000,0																						

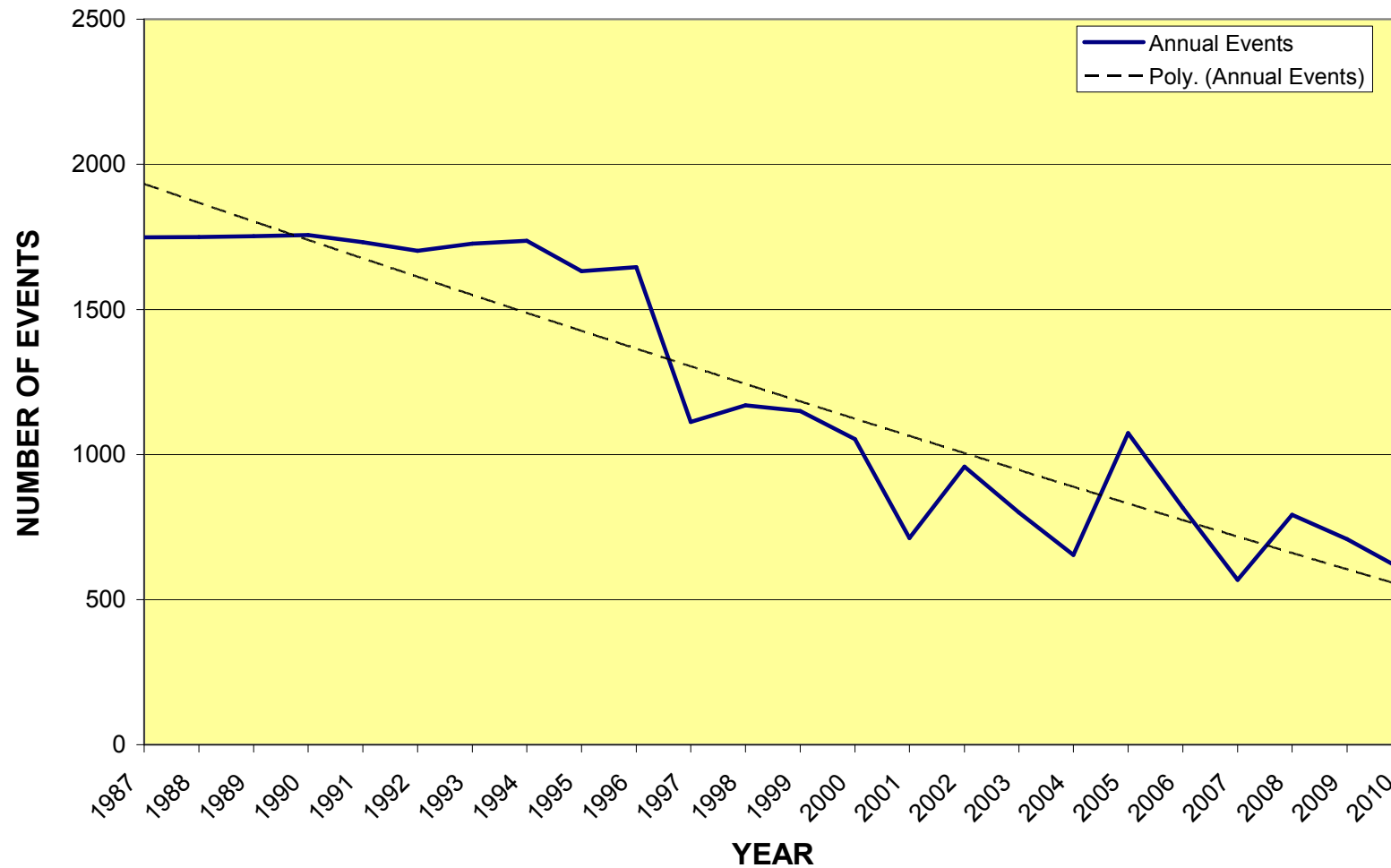
MAINE CSO COMMUNITY ANNUAL NUMBER OF CSO DISCHARGE EVENTS

		Annual Number of CSO Discharge Events																							
No longer a CSO Community		Year																							
Community	NPDES Permit No.	1987	1988	1989	1990	1991	1992	1993	1994	1995	1996	1997	1998	1999	2000	2001	2002	2003	2004	2005	2006	2007	2008	2009	2010
Auburn S.D.	99720000	80	80	80	80	80	80	21	21	10	10	7	7	7	7	44	67	62	24	58	37	42	59	61	37
Bangor	63500000	53	53	53	53	52	37	46	49	49	41	38	44	33	37	20	40	49	42	46	58	25	65	78	73
Bar Harbor	32000000	155	155	155	155	155	155	155	155	155	155	154	47	98	44	7	21	16	5	22	18	10	27	28	19
Bath	60000000	64	64	64	64	64	64	64	64	64	64	64	30	37	21	10	25	23	20	33	32	25	29	21	20
Belfast	736000	7	7	7	7	7	7	7	7	7	7	7	5	7		1	0	0	0	5	3	5	4	3	6
Biddeford	40000000	180	180	180	180	180	180	180	180	180	180	94	147	162	184	140	150	93	61	104	82	70	53	46	28
Brewer	75000000	95	95	95	95	95	95	66	66	66	66	22	92	95	80	53	72	66	72	78	45	38	59	56	50
Bucksport	53000000	53	53	53	53	53	53	53	53	53	53	53	10	17	10	32	24	25	8	24	18	2	0	0	0
Calais	42000000	15	15	15	15	15	15	15	15	15	15	15	15	15	15	15	15	9	15	5	8	10	14	8	8
Cape Elizabeth	ME0102806	5	5	5	5	5	5	5	5	5	5	2	3	5	5	3	0	2	5	20	20	5	11	17	12
Corinna S.D.		30	30	30	30	30	30	30	30	30	30	15	16	26	23	19	1	1	0						
Dover-Foxcroft		8	8	8	8	8	2	8	6	1	4	0	3	0	1	0	0	0	0	2	0				
East Millinocket		1200000	11	11	11	11	11	11	11	11	11	11	11	11	0	0	0	0	0	0	0				
Fairfield	300000	15	15	15	15	15	15	15	15	15	15	4	4	4	4	4	4	0	0	0	0	0	0	0	0
Fort Kent U.D.	3000	10	10	10	10	10	10	10	10	10	10			0	2	0	0	2	1	4					
Gardiner	44000000	40	40	40	40	40	40	40	40	40	40	5	19	11	13	9	13	24	11	41	14	2	8	2	12
Greater Augusta U.D.	72554000	80	80	80	80	80	80	80	80	80	80	39	79	59	73	25	58	70	58	73	50	29	34	35	32
Hallowell W.D. - 2008 GAUD	350000	14	14	14	14	14	14	14	14	14	14	3	4	6	3	0	0	2	0	14	3	3	-	-	-
Hampden	1201000	1	3	8	10	7	4	17	18	8	14	8	1	11	9	0	0	2	0	13	0	1	0	1	1
Kennebec S.T.D.	2500000	15	15	15	15	15	15	15	15	15	15	15	8	6	6	4	0	5	7	9	3	1	4	0	0
Kittery	350000	7	7	7	7	7	7	7	7	7	7	3	2	0	1	1	0	0	1	0					
Lewiston	208900000	80	80	80	80	80	80	80	80	80	80	46	71	62	70	43	57	55	65	69	70	38	71	58	68
Lewiston-Auburn W.P.C.A.	480000000	80	80	80	80	80	80	80	80	80	80	80	80	80	41	28	25	23	35	49	44	29	38	36	44
Lincoln S.D.	2400000	10	10	10	10	10	10	10	10	10	5	1	3	11	2										
Lisbon	600000	5	5	5	5	5	5	5	5	5	5	5	5	1	1	1	0	0	0						
Livermore Falls	0											0	0												
Machias	7000000	15	15	15	15	5	7	3	9	3	3	3	2	9	5	0	4	16	8	15	10	5	12	13	9
Madawaska	3200000	16	16	16	16	16	16	91	91	27	26	16	12	0	3	1	1	7	4	65	14	17	18	32	17
Mechanic Falls S.D.	18000000	42	42	42	42	42	42	42	42	42	42	24	25	18		10	15	20	12	29	23	9	42	42	18
Milford	220000	8	8	8	8	8	8	8	8	8	8	8	8	8	8	8	8	8	8	0	8	0	4	1	3
Milo W.D.	10000	3	3	3	3	3	3	3	3	3	3	3	3	3	1	0	0	1	0	1	0	2	1		
Old Town	6300000	25	25	25	25	25	25	25	25	25	25	25	3	5	4	0	5	7	1	13	1	4	4	0	1
Orono	31000000	30	30	28	29	19	12	25	27	18	37	3	7	12	4	0	1	2	0	12	3	6	7	3	3
Paris U.D.	1000000	5	5	5	5	5	5	5	5	5	5	0	1	0	1	0	0	1	0	2	2	2	2	0	4
Portland & PWD	1800000000	100	100	100	100	100	100	100	100	100	100	61	102	81	83	58	141	71	86	88	93	58	87	104	79
Presque Isle	27500000	26	26	26	26	26	26	26	26	26	26	17	26	12	14	4									
Randolph	10000000	23	23	23	23	23	23	23	23	23	23	23	23	23	23	19	3	2	0	8	3	1	9	7	3
Rockland	47000000	23	23	23	23	23	23	23	23	23	23	12	23	18	8	5	11	6	2	0	0	0	0	0	
Saco	176000000	44	44	44	44	44	44	44	44	44	44	36	33	39	44	22	36	22	32	41	24	12	12	9	10
Sanford S.D.	4000000	10	10	10	10	10	10	10	10	10	10	10	10	3	1	0	0	0	0	0	1	0	0	0	0
Skowhegan	48000000	160	160	160	160	160	160	160	160	160	160	108	111	111	161	95	115	77	53	81	81	55	58	17	23
South Portland	500000000	23	23	23	23	23	23	23	23	23	23	21	23	23	15	12	11	10	10	20	20	5	10	10	12
Westbrook (PWD)	50000000	50	50	50	50	50	50	50	50	50	50	34	30	30	16	15	33	7	13	17	31	55	50	11	12
Winslow	1300000	20	20	20	20	20	20	20	20	20	20	10	10	1	0	0	0	0	0	1	0	3	3	3	2
Winterport S.D.	680000	8	8	8	8	8	8	8	8	8	8	8	8	8	8	3	8	8	1	2	0	1	1	1	0
Yarmouth	1000	4	4	4	4	4	4	4	4	4	4	0	4	4	2	1	0								
Total		1748	1750	1753	1756	1732	1703	1727	1737	1632	1646	1113	1170	1150	1053	712	959	800	654	1074	816	568	792	709	606
Median		23	23	23	23	20	20	23	23	20	23	12	10	11	8	4.5	4	7	5	15	12	5	10	10.5	12
Mean		39	39	39	39	38	38	38	39	36	37	25	26	26	24	16	22	19	16	27	21	16	23	21	18
Numbers in blue are estimated from LTCP/MP or other source.																									

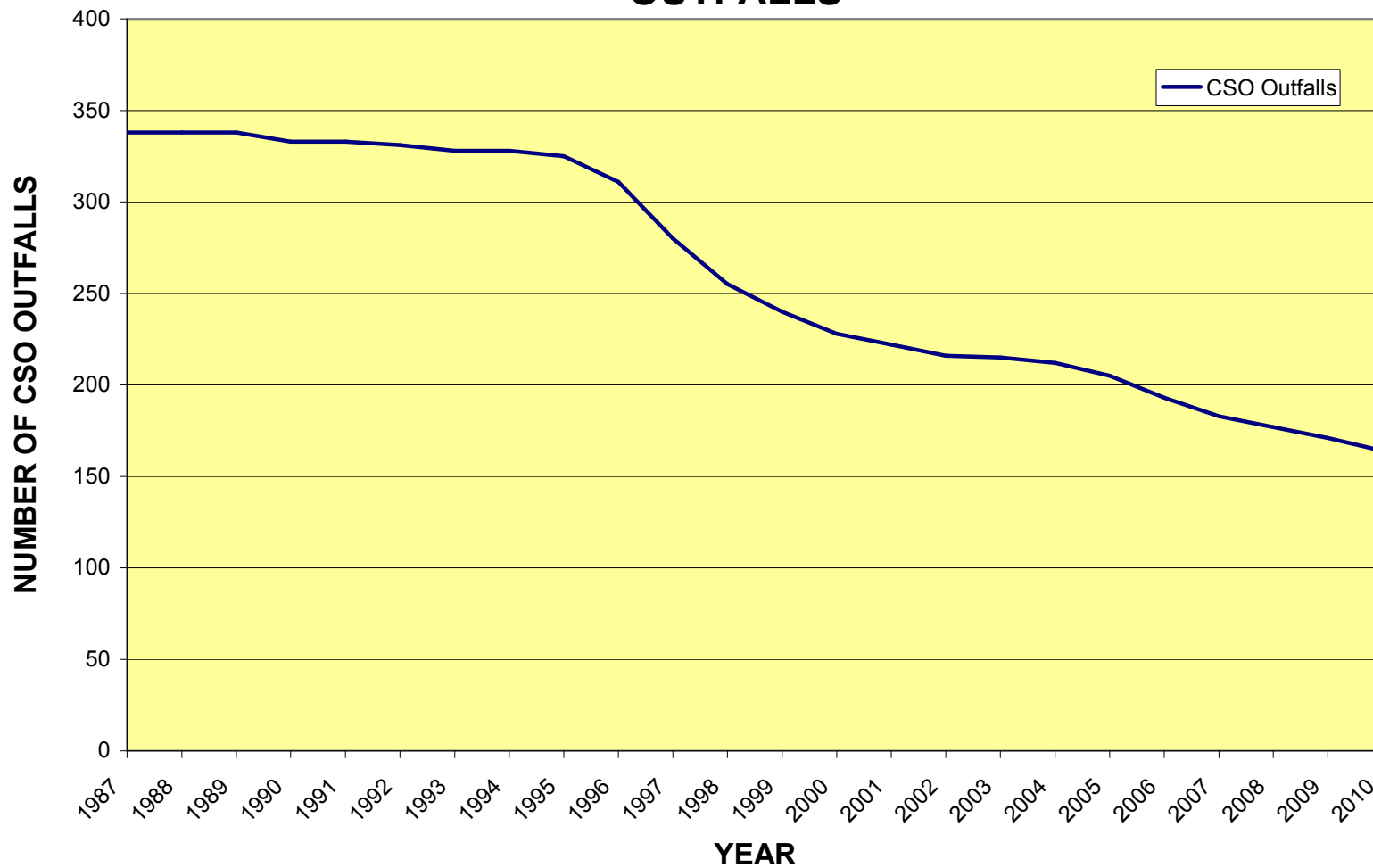
# MAINE - STATEWIDE COMBINED SEWER OVERFLOW (CSO) VOLUME DISCHARGED



# MAINE - STATEWIDE COMBINED SEWER OVERFLOW (CSO) ANNUAL NUMBER OF DISCHARGE EVENTS



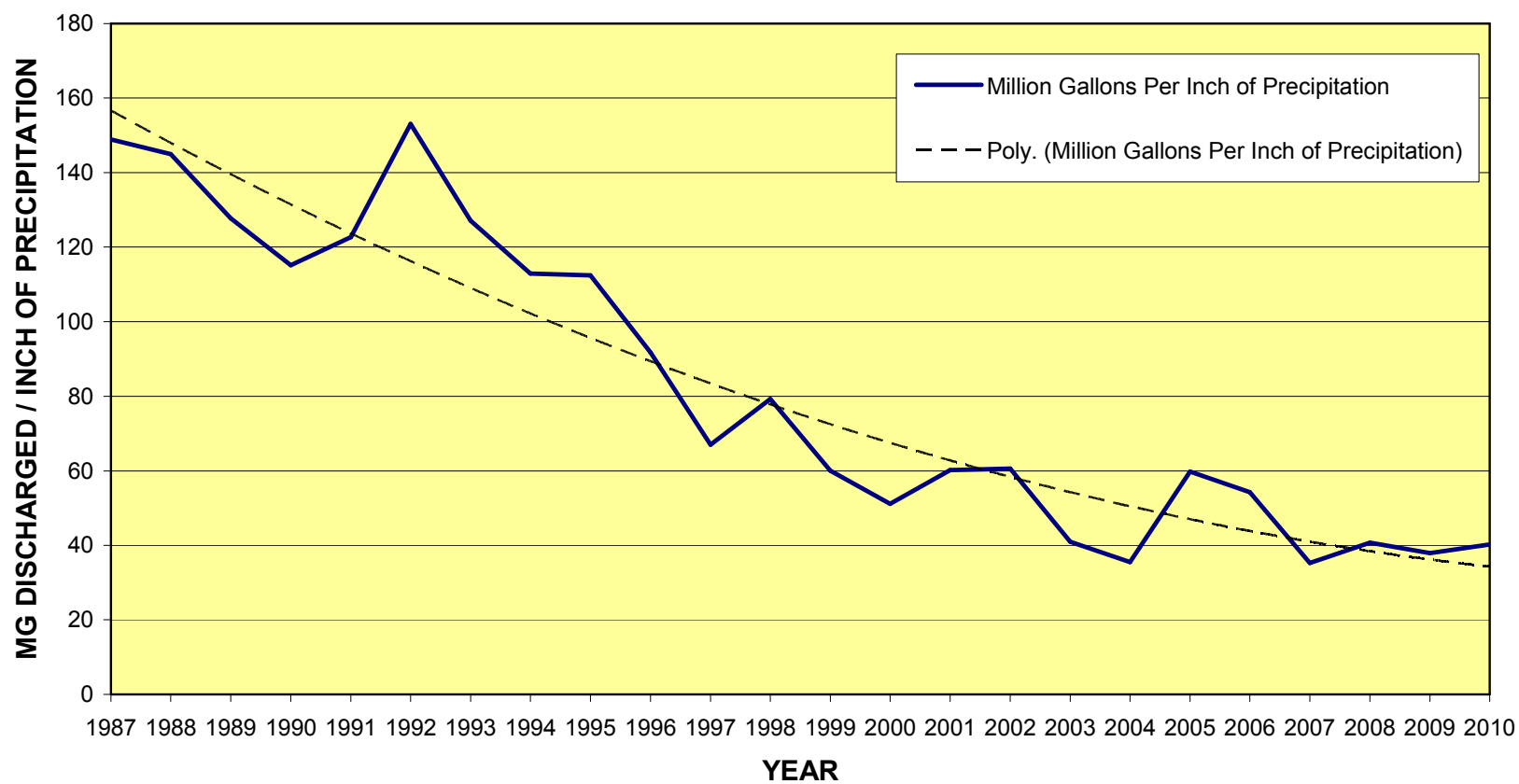
# MAINE - STATEWIDE NUMBER OF COMBINED SEWER OVERFLOW (CSO) OUTFALLS



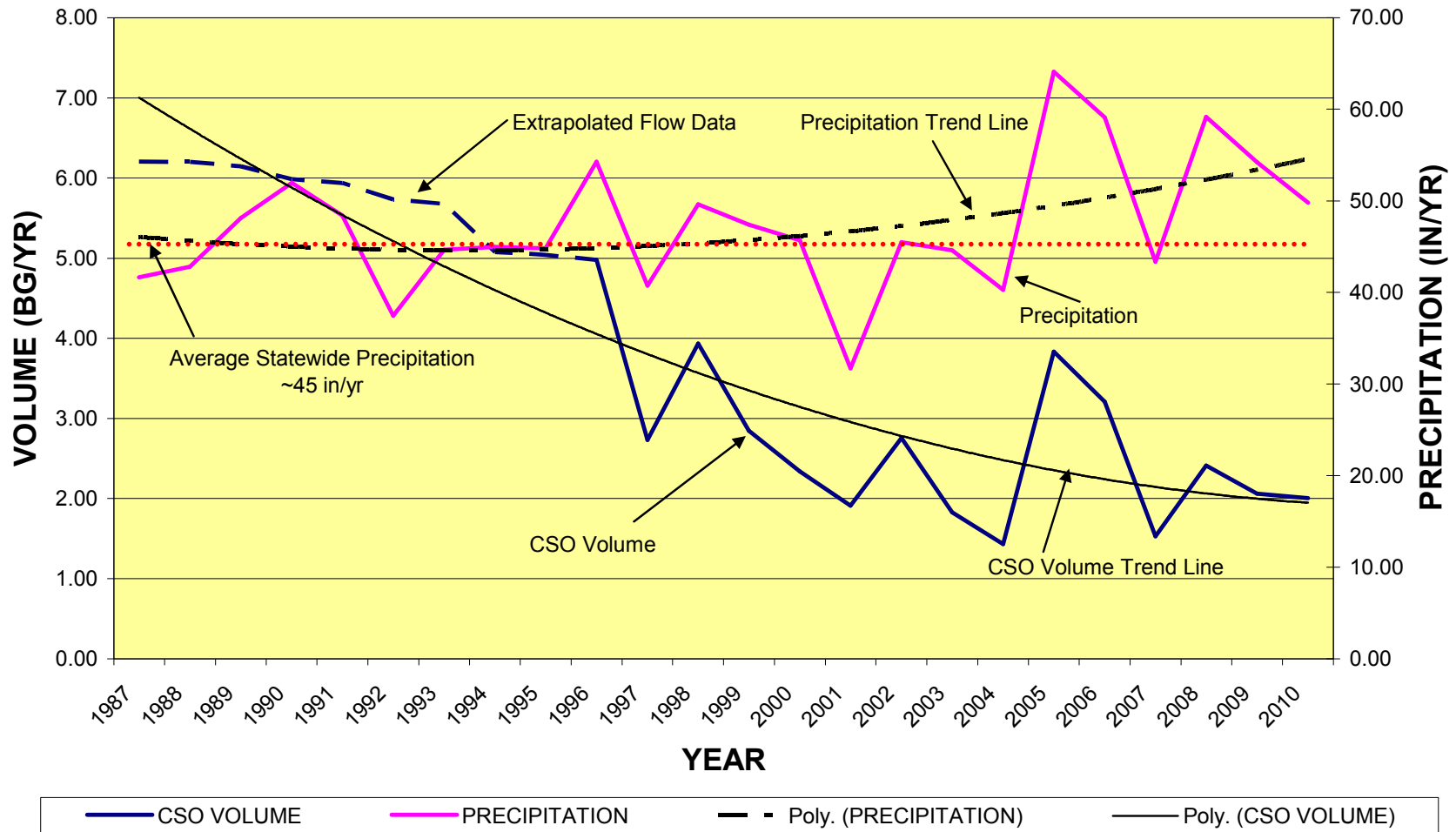




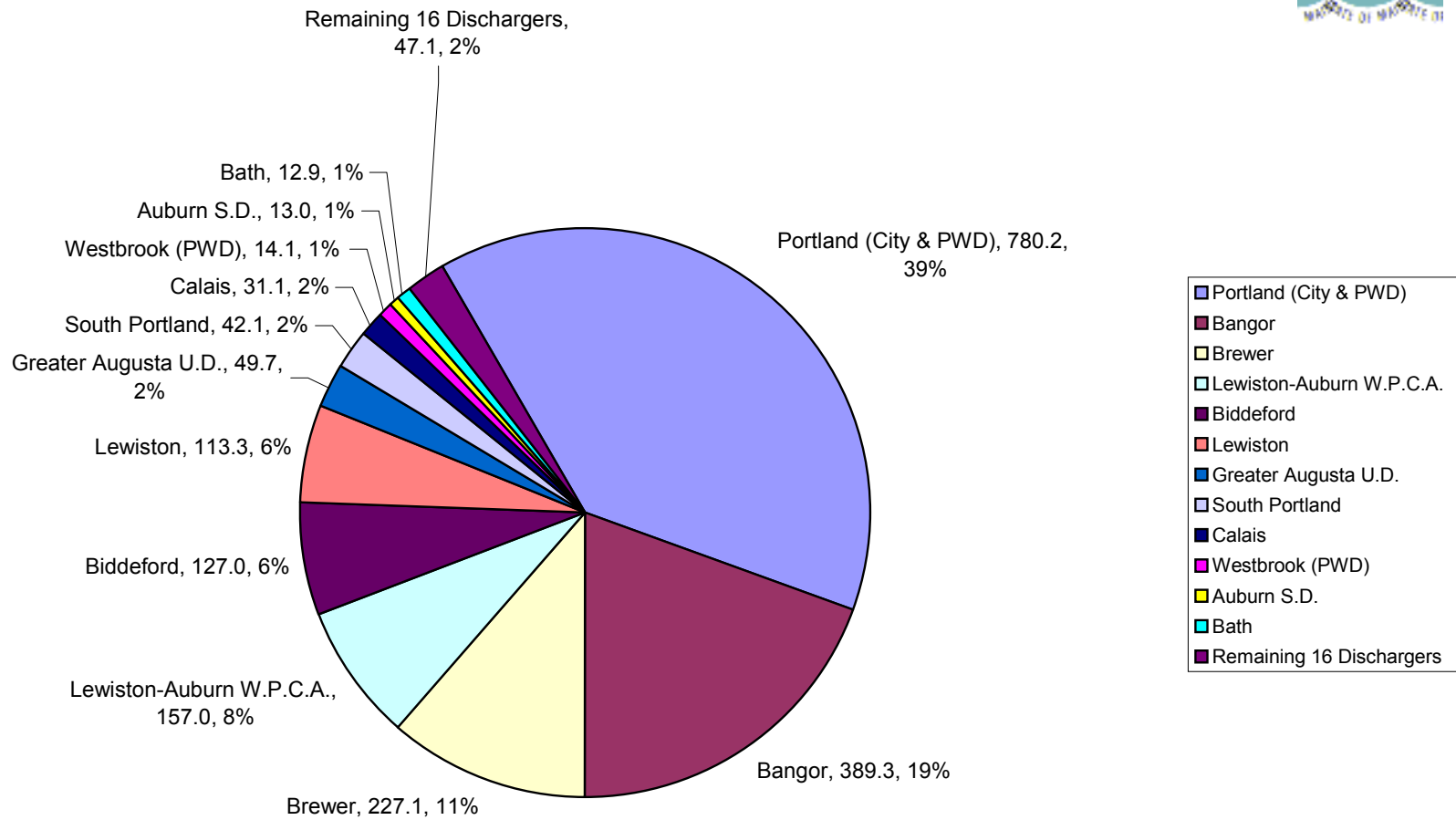
# MAINE COMBINED SEWER OVERFLOWS ANNUAL VOLUME DISCHARGED PER INCH OF PRECIPITATION



# MAINE YEARLY CSO VOLUMES AND PRECIPITATION

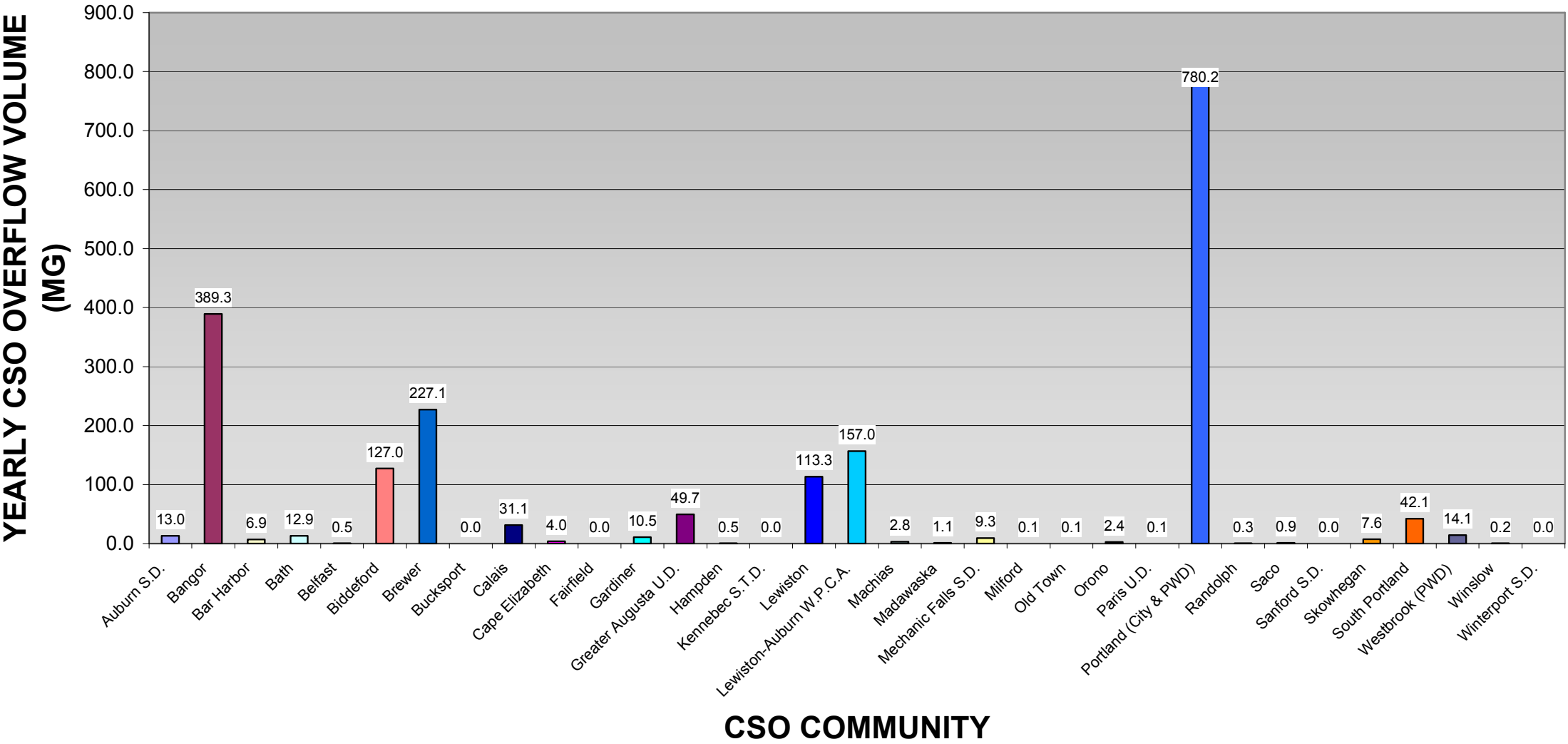


**2010 CSO FLOW COMPARISON  
32 CSO COMMUNITIES  
28 DISCHARGERS - 2.00 BILLION GALLONS**



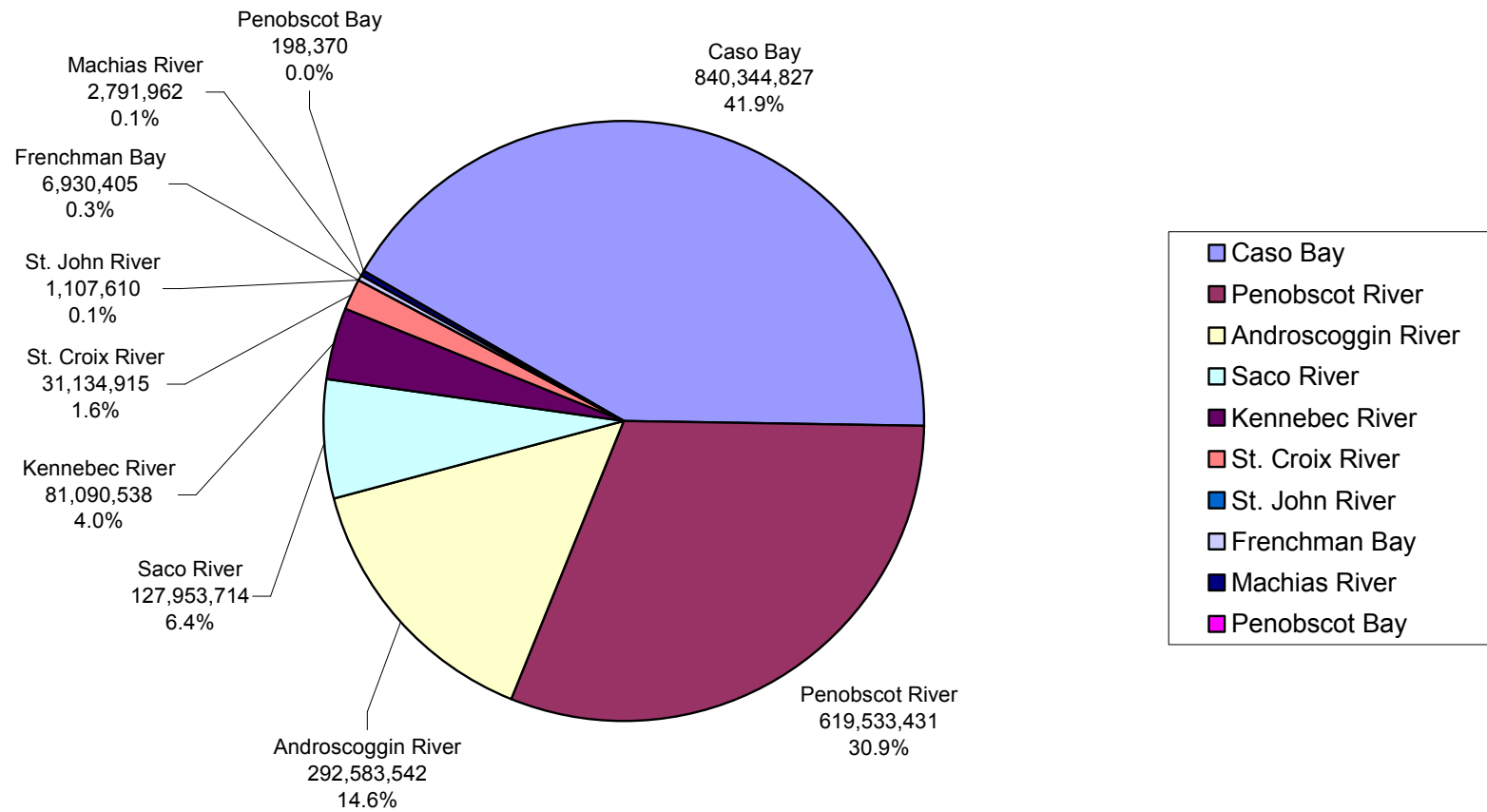
**Discharger, Overflow in Million Gallons (MG), Percent of Total**

# 2010 CSO FLOW COMPARISION BY COMMUNITY 2.00 Billion Gallons





## 2010 CSO Watershed Flows 2.00 Billion Gallons



Discharger, Overflow in Million Gallons (MG), Percent of Total

# MAINE CSO ANNUAL WATERSHED FLOWS

	Community	Annual CSO Flows (Gallons)				
		2006	2007	2008	2009	2010
Androscoggin River	Auburn SD	28,936,137	23,622,547	23,984,272	19,440,841	12,952,500
	Lewiston-Auburn WPCA	265,521,000	142,286,000	292,244,000	207,794,000	156,986,000
	Lewiston	159,807,018	90,983,189	152,039,341	116,557,656	113,285,042
	Mechanic Falls SD	9,419,000	11,853,000	11,223,600	6,231,000	9,250,000
	Paris UD	173,500	206,000	84,000	0	110,000
	<b>Sub Total</b>	<b>463,856,655</b>	<b>268,950,736</b>	<b>479,575,213</b>	<b>350,023,497</b>	<b>292,583,542</b>
Casco Bay	Cape Elizabeth	5,365,000	3,254,000	2,567,000	3,527,000	3,955,292
	Portland-City & PWD	1,816,525,856	589,203,712	883,105,087	872,751,281	780,188,153
	South Portland	26,118,706	15,727,553	12,883,433	12,183,196	42,095,393
	Westbrook	40,636,729	15,879,000	7,379,066	7,069,280	14,105,989
	<b>Sub Total</b>	<b>1,888,646,291</b>	<b>624,064,265</b>	<b>905,934,586</b>	<b>895,530,757</b>	<b>840,344,827</b>
Frenchman Bay	Bar Harbor	5,102,820	8,719,436	12,601,889	11,935,337	6,930,405
	<b>Sub Total</b>	<b>5,102,820</b>	<b>8,719,436</b>	<b>12,601,889</b>	<b>11,935,337</b>	<b>6,930,405</b>
Kennebec River	Augusta SD	14,539,424	10,000,000	48,965,215	15,723,000	49,670,000
	Bath	36,105,688	20,783,335	24,383,599	11,323,060	12,930,203
	Fairfield	0	0	0	0	0
	Gardiner	10,269,400	2,487,000	5,000,000	1,380,000	10,453,761
	Hallowell WD	150,000	150,000	-	-	-
	Kennebec STD	385,734	1,136,649	2,209,107	0	0
	Randolph	266,256	459,476	1,413,880	488,645	285,719
	Skowhegan	31,314,358	21,596,631	61,963,453	6,073,919	7,550,855
	Winslow	0	725,000	235,000	5,001	200,000
	<b>Sub Total</b>	<b>93,030,860</b>	<b>57,338,091</b>	<b>144,170,254</b>	<b>34,993,625</b>	<b>81,090,538</b>
Machias River	Machias	3,008,025	2,263,720	2,328,905	4,073,938	2,791,962
	<b>Sub Total</b>	<b>3,008,025</b>	<b>2,263,720</b>	<b>2,328,905</b>	<b>4,073,938</b>	<b>2,791,962</b>
Mousam River	Sanford SD	15,000	0	0	0	0
	<b>Sub Total</b>	<b>15,000</b>	<b>0</b>	<b>0</b>	<b>0</b>	<b>0</b>
Penobscot Bay	Belfast	485,451	1,035,392	198,370	198,370	198,370
	Rockland	0	0	0	0	0
	<b>Sub Total</b>	<b>485,451</b>	<b>1,035,392</b>	<b>198,370</b>	<b>198,370</b>	<b>198,370</b>
Penobscot River	Bangor	272,750,000	150,580,000	378,640,000	347,360,000	389,300,000
	Brewer	247,538,580	231,283,607	289,560,294	229,270,683	227,139,515
	Bucksport	5,546,501	20,000	0	0	0
	Dover-Foxcroft	0	0	0	0	0
	East Millinocket	0	0	0	0	0
	Hampden	0	85,000	0	500,000	500,000
	Milford	211,070	0	88,365	66,285	52,006
	Milo WD	0	501,000	750	0	0
	Old Town	321,105	770,699	254,967	0	125,000
	Orono	1,314,000	7,360,000	4,820,000	371,471	2,416,910
	Winterport SD	0	102,000	252,000	18,000	0
	<b>Sub Total</b>	<b>527,681,256</b>	<b>390,702,306</b>	<b>673,616,376</b>	<b>577,586,439</b>	<b>619,533,431</b>
Saco River	Biddeford	163,423,532	150,304,402	147,313,000	146,452,750	127,029,700
	Saco	38,451,182	1,950,000	100,000	27,015	924,014
	<b>Sub Total</b>	<b>201,874,714</b>	<b>152,254,402</b>	<b>147,413,000</b>	<b>146,479,765</b>	<b>127,953,714</b>
St. Croix River	Calais	20,409,850	22,060,520	18,989,779	21,263,750	31,134,915
	<b>Sub Total</b>	<b>20,409,850</b>	<b>22,060,520</b>	<b>18,989,779</b>	<b>21,263,750</b>	<b>31,134,915</b>
St. John River	Madawaska	3,700,002	2,667,765	24,194,225	15,800,000	1,107,610
	<b>Sub Total</b>	<b>3,700,002</b>	<b>2,667,765</b>	<b>24,194,225</b>	<b>15,800,000</b>	<b>1,107,610</b>
<b>Total Annual Flow</b>		<b>3,207,810,924</b>	<b>1,530,056,633</b>	<b>2,409,022,597</b>	<b>2,057,885,478</b>	<b>2,003,669,314</b>