

Summertime in the Belgrades



... Serving the Central Maine Lakes & Kennebec River Corridor

— A Cider Mill Press Publication —

VOLUME 18, NUMBER 8

In Search of the Perfect Cone

by Esther J. Perne

OK, here's the scoop. It's summer and it's acceptable to splurge on ice cream. Better than that, it's downright expected. Why else would there be so many ice cream stands so crowded with such happy adults, children and dogs openly enjoying bigger, better, more towering, more exciting cone and dish fuffs. And why else would ice cream be so easy to find?

There are no secrets where ice cream reigns. Of course, there are little secrets like keep a metal spoon hidden in the car for faster consumption, sit beside the child with the smallest appetite who will need help, or offer to share an order with a slow eater or one who is not passionate about your favorite flavor, which you will, of course, order.

But big secrets? No. There are no secret ice cream locations like there are fishing holes or fiddlehead patches or wild berry picking trails, no secret servings, no secret handouts, no secret cameras, don't we hope.

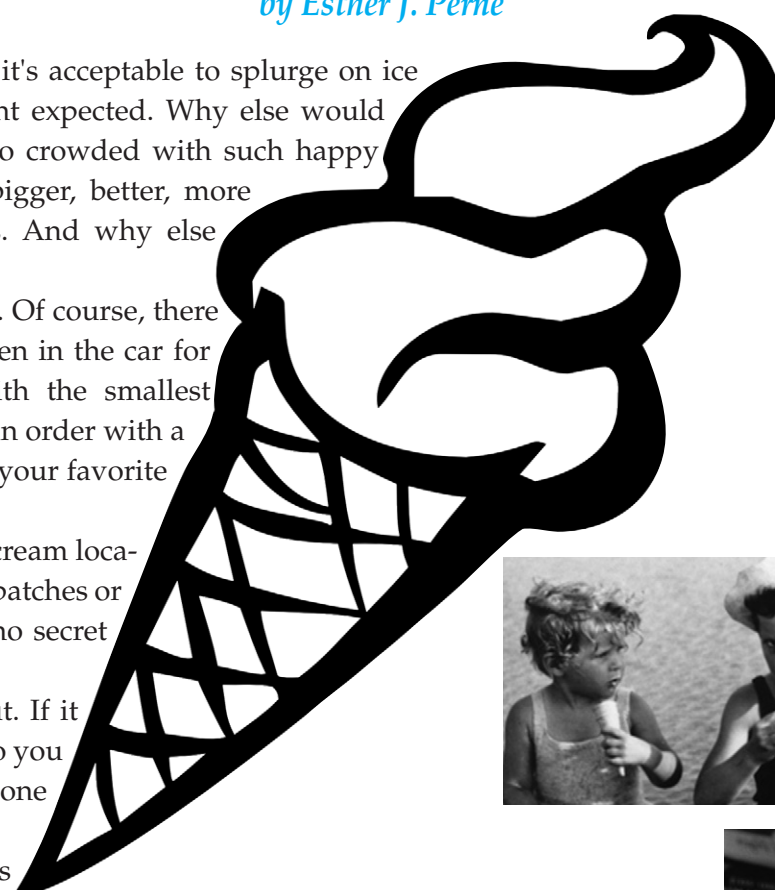
Where there is ice cream the word gets out. If it doesn't it's just like computers - ask a child. (Do you mean the place we went after soccer or the one you promised when I had shots??)

Of course, there are names for these places brand names, location names, owner names, cutesy names - but by any name they are the same - the place where you get ice cream which is so astoundingly logical that it's hats off to The Ice Cream Place in Smithfield.

Where there is ice cream, there is also a size and flavor maze that in Maine definitely one-ups the game of trivia. Sports teams, almost every type of berry, outdoor themes, moose and caribou (of which there are none in Maine) figure high. With a little luck during a lull in the line you can obtain samples of some of them (but not in that metal spoon you have hidden in the car).

As for size, think dish. Dish under the cone, dish over the cone, dish empty or full it's the best chance for catching a tipping, dripping cone overflow of ice cream, which is to say every size is bigger than you would ever expect.

So, how about that perfect cone? Wherever place, whatever flavor, whichever melting size, there is no cone more perfect than the cone of the moment.



Mid-Maine Marine Inc.
885 Kennedy Memorial Drive, Oakland, ME 04963
1/2 Mile West of Exit 127 off I-95 • 1-800-649-2628
www.midmainmarine.com

hello summer!
sales event

Up to 6 years limited coverage on portable Mercury Outboards!
2.5-20 HP Outboards Qualify

Wings Hill
Inn & Restaurant

Gourmet Dining
Culinary Institute Chefs
Casually Elegant Accommodations
Attentive Service
BELGRADE LAKES
www.wingshillinn.com
207-495-2400



Hamlin's
Marine

G SERIES
BENNINGTON



290 West River Road, Waterville • 207-872-5660
581 Main Road North, Hampden • 207-907-4385
www.hamlinmarine.com

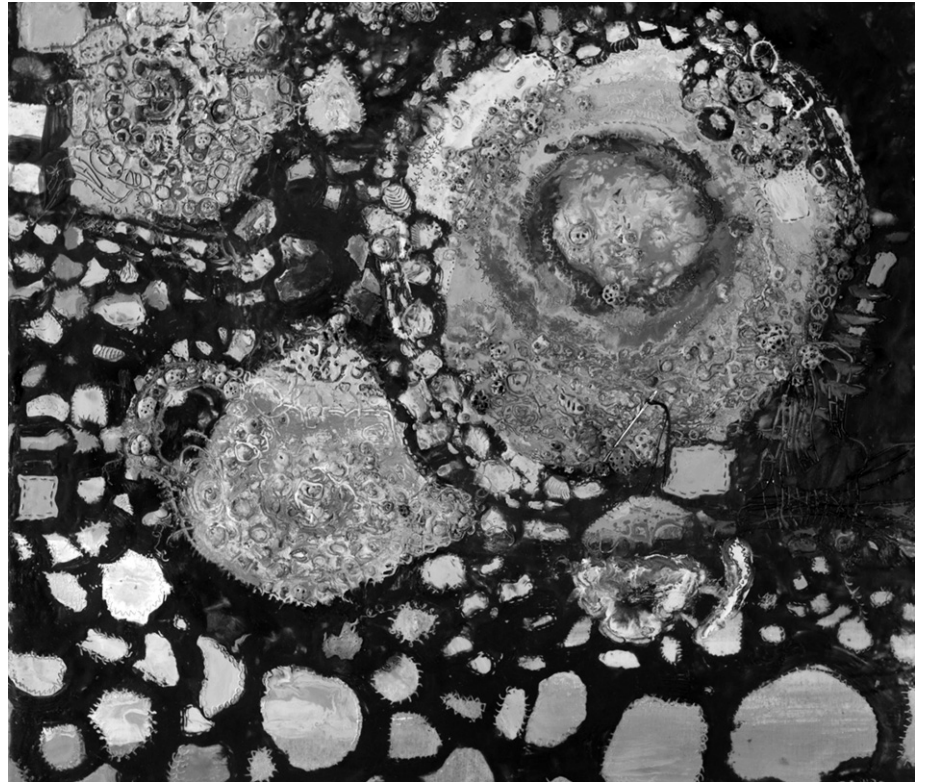
YAMAHA



Stitches in Time: Recent Works by Betsy Cook



Love Outside the Box, Mixed Media Collage



Stitches in Time, Encaustic Mixed Media Collage

Eight years after leaving Augusta's Senator Inn, former owner and artist Betsy Cook will present a solo show of her recent work at Monkitree in Gardiner. The show, entitled "Stitches in Time," introduces a collage of paintings, most of which feature actual stitches—some made by hand, some by machine, some even etched or drawn into wax.

"Looking back over the time in which these pieces were created," Cook says, "I have a prospective whereby I can appreciate this body of work as a visual diary of sorts, a chronicle of my life's 'rich tapestry,' the best and worst 'darn' experiences, that which has 'kept me in stitches,' and the events which have challenged me to 'thread the needle.'"

Monkitree, a gallery at 263 Water Street in historic downtown Gardiner, will host the show, with an opening reception on Friday July 29, 2016, from 5:30 to 8 p.m. A second reception the following Friday, August 6, will coincide with Gardiner Artwalk. The show will run through August 24.



How will you use your Home Equity Line of Credit?

3.25% APR*
2 Years

After the first 24 months, rate will be variable based on the Prime Rate, minimum **3.99% APR***

Other rates and terms available.



Pay for college?



Knock down high interest debt?



Fix up your home?

More than just a line, it's straight talk and a fair deal. Call **800.303.9511** or visit **SkowheganSavings.com**



FDIC



Skowhegan Savings

Straight Talk. Fair Deals.

We put you on the best path to find a primary care provider.



Finding a primary care provider who listens. Who delivers high quality, personal care. It should be easy—we agree. It's why Inland Hospital gives you *three simple ways* to find the respectful care you and your family deserve:

Call us at 1-800-914-1409 or
email us at inlandproviderfinder@emhs.org or
visit inlandhospital.org/providerfinder.

Whatever way is most convenient for you!



Inland Hospital

EMHS MEMBER

200 Kennedy Memorial Drive • Waterville • 861-3000
inlandhospital.org



MICHAEL BREAUT

Creative solutions for all your Mac needs

Macintosh and iOS support, based in Western Maine, working onsite throughout Maine



If you have Macs, iOS devices, software or network problems, websites you'd like built, or any ideas you would like to implement using Macintosh computers, give me a call and we can discuss if I can help...

207-578-0226 • www.michaelbreault.net



Table of Contents

Ice Cream in the Belgrades..... 1

"Stitches in Time" in Gardiner..... 2

Table of Contents..... 3

Belgrade Fire & Rescue Car Show 7/31..... 3

The Luckiest Boy: "Big Day" on Great Pond..... 4

Take It Outside: Great to be Back in Maine..... 5

Directory of Sites and Sights..... 6-7

Calendar of Events: So Much To Do..... 8-9

Kennebec Corridor Map..... 9

Belgrade Lakes Region Map.....10-11

Upcoming and Future Events..... 12

Preserving Grassland Bird Habitat..... 13

Accommodations: Don't Leave; Do Linger..... 14

Notebook: News You Can Use..... 14

Dining and Deli-ing Suggestions..... 15

Taste of Waterville..... 15

Business Directory: Services, Shops, More..... 16-17

Skowhegan Historic Cemetery Tour..... 18

Hammond Lumber Earns Safety Award..... 19

Belgrade Fire and Rescue Car Show



TASTE
of Waterville

August 3, 2016
11AM - 11PM
Downtown Waterville
www.tasteofwaterville.com

- ★ Over 30 Food Venders
- ★ Live Music all day
- ★ Street-Side Dancing
- ★ Children's Events
- ★ Beer Garden 5pm-11pm

MID-MAINE
CHAMBER OF
COMMERCE
Making the Difference

On Sunday, July 31, Belgrade Fire & Rescue will hold its 10th Annual Auto Show next to Belgrade Central School, rain or shine. Gates will open at 8 am, with awards at 2 pm. Admission is \$10 for a car and one passenger, \$3 for spectators, under 6 free.

The show will feature an awesome range of classes including antiques, foreign, and the best of the 50s, 60s, 70s, 80s, 90s and 2000s. No smoking, pets or alcohol allowed. For more information call 458-1837.

Summertime in the Belgrades

--A Cider Mill Press Publication--
PO Box 290, Belgrade Lakes, ME 04918
Editor: Esther J. Perne, 207-495-3777 • ebelnews@earthlink.net
Advertising Director: Erle Morse, 207-495-3777 • ebelnews@earthlink.net
Layout Design: Michael Breault, 207-578-0226 • mo.breault@gmail.com
Webmaster : Gregor Smith • gregor@roadrunner.com
www.sumbelnews.com

This publication is copyrighted ©MMXVI, Cider Mill Press Publications, All Rights Reserved.

CSS Cayer
Security Services, Inc.

COMMERCIAL & RESIDENTIAL
Burglary & Fire Alarm Systems
Video Surveillance & CCTV
Access Control
24 Hour UL Listed Monitoring Service

453-9177
www.cayersecurity.com

NORTH BAY ESTATES
ROUTE 8 • NORTH BELGRADE

~ **FOR SALE** ~

Custom Built Homes
by *Craig's Carpentry*
1 & 2 acre lots
with lake views from
Great Pond overlook
Craig Alexander
cell (207) 649-3749 • crgsnbe@yahoo.com

Join us...and help protect our lakes!

Protect and Preserve

B.L.A.
EST. 1908

Belgrade Lakes Association
137 Main Street, Belgrade Lakes, Maine 04918
207-512-5150 • www.belgradelakesassociation.org



—The Luckiest Boy—

The “Big Day” on Great Pond

by Rod Johnson



Sistership of the Dennis family's 23' Lyman. This beauty plies the waters of Great Pond today and is owned by Ben and Barb Ford.

Every now and then something happens that we witness or hear about that really is a Big Deal. The true story I am about to tell you, I do believe, falls into that category.

One warm August day in 1960, the youth of Great Pond were doing what they did best—waterskiing. In that era, water skiing was IN, and there were some powerful boats around the lake that could do the pulling. One such boat was a nearly new 23 foot Lyman, powered by a Gray Marine/AMC 8 cylinder engine. No ordinary engine, this 260 horsepower puppy had been equipped with dual side draft carbs to give it a lot of extra soup!

Dr. Richard Dennis of Waterville had purchased the boat the previous year from Frost Marine in Portland. Mrs. Dennis named the boat Antigua and it was

truly a beautiful craft, with varnished deck and rails, glossy white lapstrake hull and trimmed with bronze and brass hardware. Dr. Dennis or his son Dick were often seen coming into the Belgrade Lakes Village stream to purchase fuel and supplies from Day's Marina, or the store located across the street. A few of you newcomers probably didn't know the marina was located in what is now the Lakes Resource Center annex and post office.

A little aside here for history's sake. The marina was a congregating spot during most summer days, with boats coming in to refuel and get snacks from the store. Dick and a local boy Joe Tinker both worked at the Day's Marina for a season or two, and neither was a stranger to the lake. They were both good skiers as were many of the “lake kids.” Tink and I had learned as early teenagers using Camp Abena's old 15 h.p. Evinrude on a Richline aluminum boat. (Tink's parents owned the Abena girls camp at that time)

The “Big Day” started out with Dick towing a couple of skiers up in North Bay, just off the sandy beach of Bear Spring Camps. Before long, a group of teenagers had formed and someone suggested seeing how many skiers could be pulled at one time. After borrowing some additional skis and ropes from other boaters and camp owners, and not without difficulty, a record of 6 people got up at once and were towed around the cove. The scene got lots of attention from local camp owners along the shore from Bear Springs up to Jamacia Point, one of whom was Howard Gray who worked for the Waterville Morning Sentinel. After the boat returned to the beach and the skiers dropped off, Mr. Gray came down and asked Dick and the skiers if they could perform that feat the next day. He would have the newspaper's photographer properly set up to take some photos, with the promise that they would get posted on the front page of the Sentinel. Of course they all agreed and were sure they would get the notoriety of the Cypress Gardens skiers!

The “Big Day” arrived and the group had borrowed some more lines and skis. At the intended hour the next afternoon, Dick had the Lyman warmed up and the crew had upped the ante to attempt ten skiers at once, an unheard of feat on Great Pond. With 10 lines to the hitching post on the boat, and ten skiers in the water, Dick slowly tensioned all the lines with the big V/8 loping at idle. When given the thumbs up go sign, Dick put the hammer down and the big engine began its work with a roar. After struggling mightily with skiers' arms getting tired, the big boat made progress and one at a time the skiers all got up and going. Memories say there were 3 people with slalom skis and 7 on pairs. Dick remembers that the boat planed out at 26 mph with all skiers up, rather than it's normal 36 mph. A true feat for man and machine and well recorded it was by Howard Gray. True to his word, the photo appeared on the front page of the Waterville Sentinel.

Most of the skier's names have been lost to time, though the Dubord boys, Steve and Bill, were two of the slalomers. We hope some of our readers might recall this event, or perhaps were on the tow lines some 56 years ago. THE END

Author's note: Stay tuned for more true Lake Stories from days gone by.



Tree Spirits
winery & distillery

Visit our tasting room
for award winning
wines and spirits made
from local apples,
pears and maple syrup.
Now distilling Absinthe.
Private group tastings
and tours available.

152 Fairfield Street
Oakland, ME 04963
www.treespiritsofmaine.com



— Take It Outside —

I was out of town most of last week visiting some of my wife's relatives in Dayton, Ohio. While there, I took a four-mile hike in a local county park with some of my in-laws. It was fun to get out into some terrain that is very different than ours but I was shocked to see so many dead and dying ash trees that had been infested by the Emerald Ash Borer (*Agrilus planipennis*) (EAB). The EAB is a small, bright green beetle (about 3/4" long) that is native to Asia that was first found in this country in Michigan in 2002. It has since spread to over 15 states and has reached Massachusetts. Maine Department of Agriculture, Conservation, and Forestry (DACF) is monitoring for the beetle and has placed strict restrictions on imports of firewood from out-of-state. You may have noticed some of their purple traps hanging in the tops of trees along roads near ash trees (at least one along Rt 225 in Rome). Please help do your part by being vigilant and not importing any firewood from another state.

It felt great to get back to Maine. I spent a bit of time foraging in the woods, picking red and black raspberries, blueberries, and searching for mushrooms. It has been so dry the mushrooms are way behind where they normally are although I found a really nice Chicken of the Woods mushroom that I have harvested most of and shared with some friends and neighbors. This large, bright orange shelf fungus really does taste like chicken and can be substituted for chicken in various recipes, including stir fry. I also got a chance to hike French Mountain with my old friend Margaret Pietrak and her 6-month old son, Zeke. Margaret is a former resident of Rome and was active with the BRCA's Stewardship and Education Committees when she lived here. A former park ranger and current middle school science teacher, Margaret was the primary BRCA Steward for French Mountain until she moved to Bangor two years ago when her husband, Mike, completed his Ph.D. at UMO and got a job in that area doing research on salmon aquaculture diseases. It was fun to share the experience of taking her new son on one of her favorite hikes.

I also hiked The Mountain this week and met my neighbor, Shelly Fitzgerald, her dog, Juneau, and her friends, Tom and Jane, from PA and Great Pond, with their dog. Shelly hikes nearly every day with her dog, usually on The Mountain. It is amazing how much you can learn about a property hiking with a dog on a regular basis. They will usually smell or see most wildlife well before you will and if you pay attention, you will learn a lot about the creatures inhabiting our forests.

Great to Be Back in Maine

by Pete Kallin



Ash tree defoliated by Emerald Ash Borer.



Chicken of the Woods mushroom.



Margaret and Zeke on top French Mountain.



Shelly Fitzgerald and friends, Tom and Jane on The Mountain with their dogs.

On Thursday, July 27, at 7 PM, Mel Croft and I will be doing a lecture at the Maine Lakes Resource Center (MLRC), entitled, "Belgrade Lakes, The Last Two Million Years." Mel will talk about how plate tectonics and ice ages sculpted the basic landscape over the last few

million years and I will talk about how the bare rock and melted ice water evolved over the past 15,000 years to become the lakes and forest we have today. Come on out and hopefully you will learn something. And bring a kid or two.





Calendar Directory

TOWN BY TOWN...

GREAT VISITS, AWESOME OUTINGS – ART, MUSIC, CULTURE, HISTORY, RECREATION, FARMERS' MARKETS, TRAILS, SCENIC SITES, AND MORE...

AUGUSTA

- **Viles Arboretum**, 224 acres with 6 miles of year round walking trails, including art and sculpture trail, open dawn to dusk, Visitor Center open Monday-Friday, 9 am-4 pm, admission free, 626-7989, www.vilesarboretum.org, 153 Hospital Street
- **Farmers' Market at the Arboretum**, indoors, Friday 1-5 pm
- **Art in the Capitol**, Maine Arts Commission monthly self-guided exhibits in State House hallways (Mon-Fri 8 am-5 pm), Blaine House (call for times), and Maine Arts Commission Office (8:30am-4:30 pm), 287-6746, mainearts.maine.gov
- **Children's Discovery Museum**, CDM, hands-on displays, activities, Tuesday-Thursday 10 am-4 pm, Friday-Saturday 10 am-5 pm, Sunday 11 am-4 pm, admission, 622-2209, www.childrensdiscoverymuseum.org, 171 Capitol Street
- **Danforth Gallery**, Jewett Hall, art exhibits, UMA-1234, www.uma.edu
- **Governor's Mansion**, 1830 Blaine House, Tuesday-Thursday 2-4 pm, 287-2121, www.blainehouse.org, State Street
- **Holocaust and Human Rights Center of Maine**, Michael Klahr Center, Monday-Friday 8 am-4 pm, 621-3530, www.hhrc.uma.edu, University of Maine at Augusta, off Route 27
- **Kennebec Historical Society**, Wednesday-Friday 10 am-2 pm, 622-7718, www.kennebechistorical.org, 107 Winthrop Street
- **Maine State Museum**, Tuesday-Friday 9 am-5 pm, Saturday 10 am-4 pm, \$2 adults, \$1 ages 6-18, 287-2301, www.maine.statemuseum.org
- **Maine State House**, Hall of Flags, House and Senate Rooms, Klir Beck dioramas, Monday-Friday 8 am-5 pm, book tours at Maine State Museum, walk-ins welcome 9 am-1 pm, 287-5600, www.maine.gov, State Street
- **Maine State Library**, Monday-Saturday opens 9 am, 287-5600, www.maine.gov/msl/, State Street
- **Museum in the Streets**, walking/history tour, www.augusta-maine.gov, Water Street/downtown.
- **Old Fort Western**, 1754 fort, house, store, 1-4 pm daily, admission \$6, 4-14 years \$4, 626-2385, www.oldfortwestern.org, Cony Street
- **Riverfront Park**, boat launch, Greenway Trail, playground, eastside Kennebec River
- **Kennebec River Rail Trailhead**, Maine State Housing Authority parking lot, 623-8162, www.krrt.org, Water Street
- **University of Maine at Augusta Fitness Trail**, 2 miles of wooded trails, near Civic Center, Route 27
- **Farmers' Market at Mill Park**, Tuesday 2-6 pm, 626-2305, www.farmersmarketmillpark.org/, North Water Street
- **Farmers' Market at Turnpike Mall**, 549-5112, Wednesday and Saturday 10 am-1 pm, Western Avenue

BELGRADE LAKES

- **Belgrade Lakes Market**, 320-8303, careybor@yahoo.com, Sunday 8 am-1 pm, Main Street
- **Great Pond Mailboat**, 592-1537, Monday-Saturday 10 am,

Post Office, Main St.

- **The Belgrade Community Center for All Seasons**, pool and lakefront, gym, playground, picnic area, rec programs, 495-3481, www.belgrademaine.com, 1 Center Drive
- **Union Church Coffee House**, check for schedule, 7:30 pm, \$5, 495-3599, www.unionchurchmaine.org, Main Street
- **Belgrade Historical Society**, 495-2973, belgradehistoricalsociety.org
- **Belgrade Lakes Market**, Sun 8 am-1 pm, Main Street
- **Peninsula Park on Long Pond**, picnic tables, Main Street
- **Maine Lakes Resource Center**, 512-5150, www.maine.lakesresourcecenter.org, 137 Main Street

FAIRFIELD

- **Fairfield Historical Society**, 1890 Cotton-Smith History House, every Tuesday 9 am-12 noon and 1-4 pm and second Saturday of month, 453-2998, www.fairfieldmehistoricalociety.net, 42 High Street
- **Farmers' Market**, 948-5724, Wednesday 2-6 pm, Saturday 9:30 am-1:30 pm, Nazarene Church parking lot, 81 Main Street

FARMINGTON

- **Farmington Historical Society, Titcomb House Museum**, 778-4275, Wednesday and Saturday, 11 am-2 pm, July-August, www.farmingtonhistory.org, 118 Academy Street
- **Nordica Homestead Museum**, opera singer Lillian Nordica costumes, jewelry, mementos, 778-2042, Tuesday-Saturday 10 am-12 noon and 1-5 pm, Sunday 1-5 pm, www.lilliannordica.com, 116 Nordica Lane, Holley Road
- **Contra Dance**, 491-9928, www.starleft.org 2nd Saturday of the month, all welcome, 6:30-7:30 pm family dance, 8-11 pm regular dance, admission, Grange Hall, Bridge Street, Route 43, West Farmington
- **University of Maine campus and Arboretum**, four walking tours with informal guide pamphlet to campus trees, 581-1541, www.umaine.edu/arboretum/, downtown
- **Farmers' Market**, 778-6602, Friday 9 am-2 pm, Better Living Center parking lot, Front Street; Saturday 8 am-12 noon, Main Street
- **Meetinghouse Park and Gazebo**, weekly concerts throughout summer, downtown
- **Fairgrounds**, events throughout summer, Franklin County Fair in September, High Street

GARDINER

- **Artdogs and Circling the Square Fine Art Press**, Friday 1-5 pm, Saturday 10 am-4 pm, 582-6600, www.theartdogs.com, 275-277 Water Street
- **Johnson Hall Performing Arts Center**, 582-7144, www.johnsonhall.org 280 Water Street
- **Monkitree**, art exhibits, 512-4679, www.monkitree.com, Tuesday-Friday 10 am-6 pm, Saturday 12-6 pm, 263 Water Street
- **SpinOff Studio**, 588-7297, spinoffstudio.org, Monday-Friday 8:30 am-4:30 pm, 405 Water Street
- **Farmers' Market**, 512-8022, www.gardinerfarmersmarket.org, Wednesday 2-6 pm, rain or shine, The Common
- **Kennebec River Rail Trail**, 623-8162, www.krrt.org, access near Gardiner/Randolph Bridge, 6.5 miles to Augusta
- **Waterfront Park**, picnicking, events throughout summer, Kennebec River

GREENE

- **Araxine Wilkins Sawyer Memorial**, free entertainment programs, monthly - Friday 2 and 7 pm, 946-5311, www.sawyer-foundation.com, 371 Sawyer Road, off Route 202

HALLOWELL

- **Harlow Gallery**, Kennebec Valley Art Association, 622-3813, www.harlowgallery.org Wed- Sat, 12-6 pm, 160 Water Street
- **Gaslight Theater**, 626-3698, www.gaslighttheater.org City Hall, 1 Winthrop Street
- **Museum in the Streets**, history/walking tour, www.historichallowell.org, downtown
- **Farmers' Market**, 622-1350, Sun 3-6 pm, Water Street
- **Vaughn Woods and Homestead**, 166 acre park/trails/homestead, Middle Street
- **Kennebec River Rail Trail**, www.krrt.org, to Augusta, Farmingdale/Gardiner, Water Street
- **Waterfront Park**, deck/walkway on Kennebec River, North Water Street

HINCKLEY

- **L.C. Bates Museum at Good Will-Hinckley School**, early 20th century natural history and cultural exhibits, nature trails and camps, adults \$3, up to 17 years \$1, 238-4250, www.gwh.org Wednesday-Saturday 10 am-4:30 pm, Sunday 1-4:30 pm, Route 201

KINGFIELD

- **Ski Museum of Maine**, 265-2023, www.skimusuemofmaine.org, 256 Main Street
- **Stanley Museum**, 265-2729, www.stanleymuseum.org, memorabilia/displays on photographs, violins and Stanley Steamers, Tuesday-Sunday 1-4 pm, 40 School Street

LIVERMORE

- **Washburn-Norlands Living History Center**, 18th-19th century mansion/farmstead/schoolhouse, library, chapel, 897-4366, www.norlands.org, admission, living history tours Tuesday and Thursday 1-4 pm, 290 Norlands Road

MADISON

- **Lakewood Theater**, Maine's Summer Theater, Young Performers Camp, 474-7176, www.lakewoodtheater.org, Route 201
- **Skowhegan School of Painting and Sculpture**, 474-9345, www.skowheganart.org, summer evening artists lecture series, East Madison Road

MONMOUTH

- **Monmouth Museum**, local and regional Maine history, Wednesday-Sunday 1-4 pm, 933-2287, www.monmouthmuseum-inc.org, 751 Main Street
- **The Theater At Monmouth**, The Shakespeare Theater of Maine, Cumston Hall, 933-9999, www.theateratmonmouth.org, Main Street

MOUNT VERNON

- **D.E.W Animal Kingdom**, Zoo, 293-2837, 918 Pond Rd, Route 41
- **Villages Market**, farmers/crafters, Saturday 10 am-2 pm (start end of June), next to Flying Pond Store, sharihamilton@gmail.com, Route 41



Elliot B. Thayer, PLS, PE
Andrew Dunbar, PLS, LPF, LSE
RESIDENTIAL & COMMERCIAL
SITE DESIGN
STATE & LOCAL
PERMIT APPLICATIONS
PREPARED & PRESENTED
17 Hasson Street
Farmingdale, ME 04344
582-7762
www.thayereng.com

Lakepoint

REAL ESTATE

P.O. Box 221, 221 Main Street
Belgrade Lakes, Maine 04918
Cell: (207) 592-5577
Office: (207) 495-3700
Fac: (207) 495-3707
www.belgradelakepoint.com
stephanie@belgradelakepoint.com



Stephanie Yeaton
Broker

PAUL HANNA'S PLUMBING



207-495-3805

New Homes and Remodels ~ Camps
Water and Sewer Pumps ~ Water Filtration
Paul Hanna, Licensed Master Plumber



NEW PORTLAND

- **Nowetah's American Indian Museum and Craft Shop**, 628-4981, www.nowetahs.webs.com/, daily 10 am-5 pm, free, 628-4981, 2 Colegrove Road, Route 27
- **Wire Bridge**, 1864, probably only wire suspension bridge in U.S., off Route 27

NEW SHARON

- **Farmers' Market**, Saturday 9 am-1 pm, Douin's Market, 491-9025, 150 Mercer Road, Routes 2/27
- **New Sharon Historical Society**, Saturday 1-3, 778-4167, Routes 2/27

NORRIDGEWOCK

- **Norridgewock Historical Society Museum**, 1838 building, Saturday 10 am-1 pm, 634-5032, www.norridgewockmuseum.com, Mercer Road, Route 2
- **Oosoola Park**, picnic area, great playground, boat launch, on Kennebec River, Route 8

OAKLAND

- **Macartney House Museum, Oakland Area Historical Society**, 465-7549, Wednesday 1:30-4:30 pm, 1815 home with antique furnishings and Oakland artifacts, 25 Main Street
- **Town Parks**, playground, picnic tables, swimming area, boat launch area, Belgrade Road on Lake Messalonskee and McGrath Pond Road on McGrath Lake
- **Farmer's Market**, Friday 2-6 pm, 465-3094, Pine Acres Parking Lot, 895 Kennedy Memorial Drive

READFIELD

- **Readfield Historical Society and Museum** in 1853 school-house, 685-4662, www.readfieldhistorical.org, Thursday and Saturday 10 am-2 pm or by appointment, Route 17, Readfield Depot

ROME

- **Mt. Philip Grange**, suppers 3rd Sat of month, 4:30-6 pm, all you can eat beans, cornbread, rolls, chop suey, pies, Routes 135/225
- **Trails**: Mount Philip, Route 225; The Mountain, Route 27; French's Mountain and Kennebec Highlands, Watson Pond Road; for information call 495-6039 or visit www.belgradelakes.org; maps available at BRCA, 137 Main Street, Belgrade Lakes

SIDNEY

- **New England Music Camp**, concerts free and open to the public, Bowl-in-the-Pines on Lake Messalonskee, 465-3025, www.nemusiccamp.com, 8 Goldenrod Lane, Route 23
- **Sidney Historical Society**, 724-8032, www.sidneyhistoricalociety.org, 2986 Middle Road
- **Silver Spur Riding Club**, horse shows, River Road, Route 104

SKOWHEGAN

- **Margaret Chase Smith Library**, residence, home, museum exhibits, 474-7133, www.mcslibrary.org, free, Monday-Friday, 10 am-4 pm, 54 Norridgewock Ave.
- **History House Museum**, 1800s local history and culture, heirloom gardens, free, Tuesday-Saturday, 10 am-4 pm, 474-6632, www.skowheganhistoryhouse.org, 66 Elm Street
- **Fairgrounds**, weekly horse shows/competitions, free public

events, covered arena, Skowhegan State Fair in August, 474-3621, Madison Avenue, Route 201

- **Farmers' Market**, Wednesday 3-6 pm, Saturday 9 am-1 pm, weekly entertainment, 938-3906, Somerset Gristmill parking lot, downtown

SMITHFIELD

- **Fairview Grange**, 362-2791, Route 8
- **Smithfield History Society "The Groves House,"** 634-4392, 21 Lakeview Drive
- **Sunbeam Roller Rink**, 362-4951, 830 Village Rd, Route 8
- **Sunset Camps**, public beach, 362-2611, www.sunsetcamps.com, 834 Village Road, Route 8

UNITY

- **Unity College Centre for the Performing Arts**, folk genre music, 568-3147, www.unitymaine.org, 42 Depot Street

WATERVILLE

- **Aqua City Actor's Theatre (ACAT)**, 873-7000, www.acattheatre.org. Waterville Opera House Studio Theater, Main Street
- **Museum in the Streets**, downtown history/walking tour, www.themuseuminthestreets.com/waterville.htm
- **Head of Falls Park/Two Cent Bridge**, historic foot bridge over Kennebec River connecting Waterville and Winslow, Front Street
- **Common Street Arts**, 872-2787, www.commonstreetarts.org, Wednesday-Saturday 12-6 pm, 16 Common Street
- **Colby College Museum of Art**, 859-5600, www.colby.edu/museum/ Tuesday-Saturday 10 am-5 pm, Sunday 12-5 pm, free admission, Colby College Campus, Mayflower Hill
- **Colby College Special Collections**, Miller Library, Monday-Friday 10 am-12 noon and 1-4 pm, free admission
- **Thomas College Art Gallery**, 180 West River Road
- **Waterville Historical Society and Redington Museum**, 1814 home and pharmacy, 872-9439, www.redingtonmuseum.org. Tuesday-Saturday tours at 10 and 11 am, 1 and 2 pm, 62 Silver Street
- **Waterville Opera House**, 873-7000, www.operahouse.com, 93 Main Street
- **Farmers' Market**, Thursday 2-6 pm, 680-2055, www.watervillefarmersmarket.org, The Concourse parking lot

WAYNE

- **Farmers' Market**, 685-4657, <http://waynefarmersmarket.weebly.com>, Saturday 9 am-noon, Town Green, at the Mill Pond, Main Street

WILTON

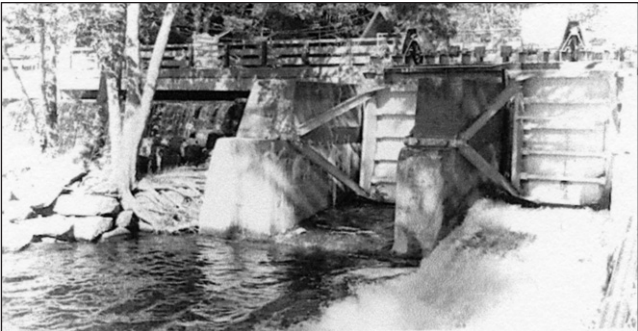
- **Wilton Farm & Home Museum**, 645-2091, 645-4578, www.thewiltonfarmandhomemuseum.org, Saturday 1-4 pm or by appointment, 10 Canal Street

WINSLOW

- **Fort Halifax on the Kennebec River**, historic fort tower, park, Route 201

WINTHROP

- **Norcross Park**, playground, picnic site, boat launch on Maranacook Lake
- **Farmers' Market**, 446-2899, Tuesday and Saturday 9 am-1 pm, town office parking lot, 17 Highland Avenue



The Dams Keeper Report

Well, as of this writing it looks like the honey-moon is over! Both Great and Long Ponds are really starting to show evidence of the dry conditions we're experiencing this summer. The Village has had only 2.9" of rain in the past 30 days. Unfortunately the storms that rolled through two days ago went North and South of us – once again!

Great Pond is now 4.8" below full pond with both gates completely closed. Long Pond at the Wings Mill dam has now dropped to 3" below full for the first time this year with upper Long Pond, nine miles to the North, presently at 1.5" below full pond but dropping slowly each day. Like the Village spillway dam, both Wings Mill gates remain completely closed. If anyone knows a good rain dance, now would be the time to show your stuff!

There are some benefits to a dry weather pattern with one, of course, being an incredibly beautiful classic Maine summer. Along with that, is a reduction in runoff, which limits those nasty algal blooms.

Enjoy this beautiful summer, weather and your vacation!

Dick Greenan

Secretary, Belgrade Lakes Watershed Dams Committee



...Calendar continued from page 7

speaker Cheryl Patten, well-known local historian and President of the Maine Old Cemeteries Association, free to the public, refreshments offered, 474-6632, Skowhegan History House Museum & Research Center, 66 Elm Street, Skowhegan.

Thursday 8/4 - Lyme Disease in Maine, Dr. Beatrice Szantyr, medical director for Maine Lyme, will focus on awareness, risk factors, prevention, and symptoms of this tick-borne disease that is steadily increasing in Maine, sponsored by the Belgrade Regional Conservation Alliance, 7 pm, 495-6039, Maine Lakes Resource Center, Main Street, Belgrade Lakes.

Thursday 8/4 and Friday 8/5 - "Little Women," presented by New England Music Camp Musical Theater, ticketed event, 7:30 pm, 844-476-6976, Alumni Hall, NEMC, 8 Goldenrod Lane, Sidney.

Additions/Updates/Corrections: Please contact Summertime in the Belgrades, 495-3777, with changes to this Directory.



J & M Logging, Inc.
Firewood

622-6353
Cut to order
in lengths from 14" to 23"

Green Certified Wood, Seasoned, & Ash
Cut, Split & Delivered

853 Civic Center Drive, Augusta, ME 04330



BELGRADE BOAT STORAGE

FREE LAKESIDE BOAT
PICKUP & DELIVERY

DARE TO COMPARE
Best Prices on Inside,
Outside Boat Storage,
Shrinkwrapping &
Winterization

Craig Pooler
Cell 207-314-3287 • Office 207-495-3421
Email: cpooler1@myfairpoint.net
www.BelgradeBoatStorage.com

Have a bucket list? Want a new expierence?



C+E SEGWAYS

Located in Manchester, Maine
We offer tours by appointment only for
ages 12 and up.
Safe, quiet and a wicked good time!
Reasonable Rates!
(207)215-4529
Call now to book a new adventure with us!

WATCHES • DIAMONDS
EXPERT WATCH REPAIR • STONESETTING • GOLDSMITHING

Larsen's Jewelry
SERVING YOU SINCE 1962



57 MAIN STREET
WATERVILLE, MAINE 04901

MARK A. LARSEN

207-872-6301
1-800-697-1874



— Calendar —

Thursday 7/28 and Friday 7/29 - Kneading Conference, workshops, tours, presentations, ovens, grains, events in the area, www.heartofmaine.org/kneading/, 947-6622, Fairgrounds, Skowhegan.

Thursday 7/28 through Saturday 7/30 - Vienna Historical Society 34th annual original plays set in 1920s Vienna, by Beverly Wight Smith and Cheryl Herr-Rains, entertainment by Brent Smith and Ellie Andrews, admission \$6, refreshments available, 7 pm each evening, 2 pm Saturday matinee, Vienna Union Hall, off Route 41, Vienna.

Thursday 7/28 and Friday 7/29 - "The Illusion," by Pierre Corneille, preview Thursday, opening Friday, 7:30 pm, 933-9999, Cumston Hall, Theater At Monmouth.

Friday 7/29 through Sunday 7/31 - Eastern Maine Agility & Dog Show, covered arena, open to public, 586-5110, Fairgrounds, Madison Avenue, Skowhegan.

Wednesday 7/27 through Saturday 7/30 - "Young Frankenstein," 474-7176, Lakewood Theater, Route 201, Madison.

Friday 7/29 - Guided Walking Tour of the North Cemetery, sponsored by Skowhegan History House, \$5 donation, 10 am, 474-6632, meet at cemetery gate, North Avenue, Skowhegan.

Friday 7/29 - Market Square Melodies, free live music on your lunch break, 11 am-1 pm, Market Square Park, Water Street, downtown Augusta.

Friday 7/29 - Summer Busk in the Park, featuring The Sweet Beets, 5-5:45 pm, Johnson Hall Park, Water Street, Gardiner.

Friday 7/29 - Waterfront Concert Series, featuring Ale House String Band, free, 6-7:30 pm, Waterfront Park, Gardiner.

Friday 7/29 - Opening Reception, Stitches in Time: Recent Works by Betsy Cook, 5:30-8 pm,

512-4679, show runs through 8/24, free and open to the public, Monkitee Gallery, 263 Water Street, Gardiner.

Friday 7/29 and Saturday 7/30 - Bossuv Ballet, "Don Quixote." \$15, \$12 students and seniors, 7 pm Friday, 2 pm Saturday, Waterville Opera House, Main Street, Waterville.

Friday 7/29 - Student Honor Recital, New England Music Camp, free, 7:30 pm, 844-476-6976, Alumni Hall, 8 Goldenrod Lane, Sidney.

Friday 7/29 - Skowhegan School of Painting Lecture Series, George Lewis, Paul Mellon Distinguished Fellow, free and open to the public, 474-9345, 8:30 pm, Old Dominion Fresco Barn, 39 Art School Road, Madison.

Saturday 7/30 - Pancake Breakfast, sponsored by Smithfield Historical Society, pancakes, sausage, homemade baked beans, juice and coffee, \$6 adults, \$4 children, preschoolers free, also bake sale, 7-10 am, Smithfield Baptist Church next to Groves History House, Lakeview Drive, Smithfield.

Saturday 7/30 - Open House at Groves History House, weaving, spinning and quilting demonstrations, antique car show, homemade ice cream with maple syrup will be available, 9 am-2 pm, Smithfield Maine Historical Society, Groves History House, Lakeview Drive, Smithfield.

Saturday 7/30 - Paddle Trek, day long guided trip, Mount Vernon Village to Wayne Village, sponsored by the 30 Mile River Watershed Association, register at www.30mileriver.org, 7:30 am-3 pm, 860-4043, depart downtown Mount Vernon.

Saturday 7/30 - 2016 VLMP Annual Lake Monitoring Conference, 783-7733, Great Outdoors, Pleasant Pond, Turner.

Saturday 7/30 - 7th Annual Friends of the Belgrade Public Library 5K Road Race, featuring The Summer Camp Challenge, registration 7 am, race 8 am, \$20 day of race, \$15 pre-registration at RunReg.com, 465-3524, Belgrade Central School, Depot Street, Belgrade.

Saturday 7/30 - Maine Artisan Bread Fair, over

60 vendors, delicious breads, pastries, books, equipment, professional bakers, live music, demos, superb Maine made foods, free, everyone is invited, 9 am-3 pm, 717-4578, Skowhegan Fairgrounds, Route 201, Madison Avenue, Skowhegan.

Saturday 7/30 and Sunday 7/31 - Maine-ly Harmony women's barbershop singers annual fundraiser yard sale, 9 am-3 pm, 582-5523, Davis Hill Gardens, Route 3, Palermo.

Saturday 7/30 - Scavenger Hunt in Gardiner, hosted by The Sensory Gym, kids will go around to businesses and get a stamp, when board is complete they will bring it back to the gym for a prize, 9 am-noon, 213-7069, Water Street, Gardiner.

Saturday 7/30 - Fairy and Toad Houses, make your own along the trail, use fun natural materials, learn a few tricks of construction, discover the beauty of the trails, 1-3 pm, 238-4250, L.C. Bates Museum, Route 201, Hinckley.

Saturday 7/30 - "Cyrano," 1 pm, "Henry V," 7:30 pm, 933-9999, Cumston Hall, The Theater At Monmouth.

Saturday 7/30 - New England Music Camp Concert, free and open to the public, 3 pm, 465-3025, Bowl in the Pines, Route 23, Sidney.

Saturday 7/30 - North Pond Association Annual Meeting, hear about accomplishments and plans for the future, guest speakers, vote on new president and board members, discuss funding for lakewide shoreline survey, 4-5 pm social appetizers, 5-6 pm meeting, 362-5533, Fairview Grange, Main Street, Smithfield.

Saturday 7/30 - Summer Smorgasbord, baked beans, casseroles, salads, bread, beverages, summery desserts or ice cream sundae bar, adults \$8, children 5-12 \$4, 5-6:30 pm, 872-8976, First Congregational Church, corner of Eustis Parkway and Main Street, Waterville.

Saturday 7/30 - Rock For The Dock, a fundraiser to benefit the dock-purchase fund for the Belgrade Lakes Youth Sailing Program, live music Slygo Road with special guest Molly Gibbs, \$20 per person, byob, 6-9 pm, Loon Cove Community Building, Loon Call Drive,

off Smithfield Road, Belgrade.

Saturday 7/30 - Friends of Messalonskee Meet-and-Greet, Annual Meeting, meet lake neighbors and learn about efforts on Messalonskee Lake, guest speaker Maggie Shannon, 4:30 pm, followed by BBQ at 5:30 pm (ticketed) and Al Corey Band at 7:30 pm (ticketed event), 240-7440, Snow Pond Center for the Arts, 8 Goldenrod Lane, Sidney.

Saturday 7/30 - Jazz Under The Stars featuring The Al Corey Band, guest soloist Bill McHenry, Saxophone, 80th Anniversary celebration of New England Music Camp, ticketed event, 7:30 pm, 844-476-6976, Bowl in The Pines, Snow Pond Center For The Arts, 8 Goldenrod Lane, Sidney.

Sunday 7/31 - Annual Car Show, Belgrade Fire & Rescue Association, gates open 8 am, awards 2 pm, dozens of classes, rain or shine, 215-6142, next to Belgrade Central School, Depot Street, Belgrade.

Sunday 7/31 - "Love's Labour's Lost," by William Shakespeare, 1 pm, "The Barber of Seville," 7 pm, 933-9999, Cumston Hall, The Theater at Monmouth.

Sunday 7/31 - The Colwell Brothers Band, blues, free and open to the public, 2-4 pm, Summer Concerts at Norcross Point, Lake Maranacook, Winthrop.

Sunday 7/31 - New England Music Camp Concert, "Bowl in the Pines," free, everyone welcome, 3 pm, 465-3025, Route 23, Goldenrod Lane, Sidney.

Sunday 7/31 - Belgrade Lakes Association Meeting, Great Pond and Long Pond, speakers: world-renowned limnologist Ken Wagner, PhD and Dr. Whitney King, Colby College water quality research report, 3:30-6 pm, 512-5150, Belgrade Community Center for All Seasons, Route 27, Belgrade Lakes.

Sunday 7/31 - Skowhegan Community Orchestra, Coburn Park Concerts, bring lawn chairs and blankets, 5-6:15 pm, Philbrick Gazebo, Route 2, Skowhegan.

Monday 8/1 - Hall of Fame Pitcher Goose Gossage and other major league players at the

MAINE-ly ELDER CARE

"Caring for the ones who cared for us"



In - Home Nursing • Personal Care Services • Homemakers
• Emergency Response Systems • Transportation Services

STATE REGISTERED PERSONAL CARE
AND HOMEMAKER AGENCY

465-3249

28 Center St., Oakland, Me 04963

www.Maine-lyElderCare.com

denise@Maine-lyElderCare.com

DAY'S REAL ESTATE

"The Waterfront Specialists" 207-495-3111

262 Augusta Road (Route 27) • Belgrade Lakes, Maine 04918 •

Web: www.daysrealestate.com • e-mail: daysrealestate@roadrunner.com



LONG POND ~ Terrific westerly views from this classic Maine cottage with bunkhouse and 200' +/- shore-front. Property includes a new leach field, well and new dock. All this awaits your summer fun! **\$259,900**



ROME ~ Very nice 2 family home. Great tenant currently in Unit 2 with Unit 1 open so that new owner can occupy. Hardwood floors, great location and large lot. Unit 1 had 3 BR and 1.5 baths; Unit 2 is 2 BR and 1 bath. **\$145,000**



PITTSTON ~ 2.8 acres and an older mobile home with many additions and several outbuildings. A great starter home or tear down and start new with a beautiful level lot and existing septic and well. **\$64,999**



Baseball Camp at Camp Tracy at Fenway Park in Belgrade, followed by the Annual Ray Haskell Ford Major League Baseball Alumni golf tournament, to benefit the Alford Youth Center programming, 1 pm, 873-0684, Golf Course, Belgrade Lakes.

Tuesday 8/2 through Saturday 8/6 - Skowhegan RiverFest 2016, celebrating recreation and life on the Kennebec River, highlights include Moonlight Madness, Rotary Lobster Bake, Drivers and Duffers Golf Classic, 474-3621, events centered on the Kennebec River and downtown Skowhegan.

Tuesday 8/2 - "Puss in Boots," 1 pm, 933-9999, Cumston Hall, The Theater At Monmouth.

Tuesday 8/2 - Final Score! Summer Reading, Sarah and Gene, 1 pm, 465-7533, Oakland Public Library, 18 Church Street, Oakland.

Tuesday 8/2 - Quarry Road Summer Race Series, 8K 6 pm, fun run for 12 and under 5:30 pm, www.quarryroadraces.com, Quarry Road, off North Avenue, Waterville.

Tuesday 8/2 - "The Barber of Seville," 7:30 pm, 933-9999, Cumston Hall, The Theater At Monmouth.

Tuesday 8/2 - Student Honor Recital, New England Music Camp, 7:30 pm, 844-476-6976, free, Alumni Hall, 8 Goldenrod Lane, Sidney.

Wednesday 8/3 - Taste of Greater Waterville, over 30 food vendors, live music all day, street-side dancing, children's events, beer garden 5-11 pm, sit-down dining hosted by local restaurants, activities from 9 am-11 pm, 873-3315, Chamber of Commerce, downtown Waterville.

Wednesday 8/3 - Art Afternoon, fun mini workshop, create art with all mediums, be inspired by the collections, guided by staff members, 1 pm, 238-4250, L.C. Bates Museum, Route 201, Hinckley.

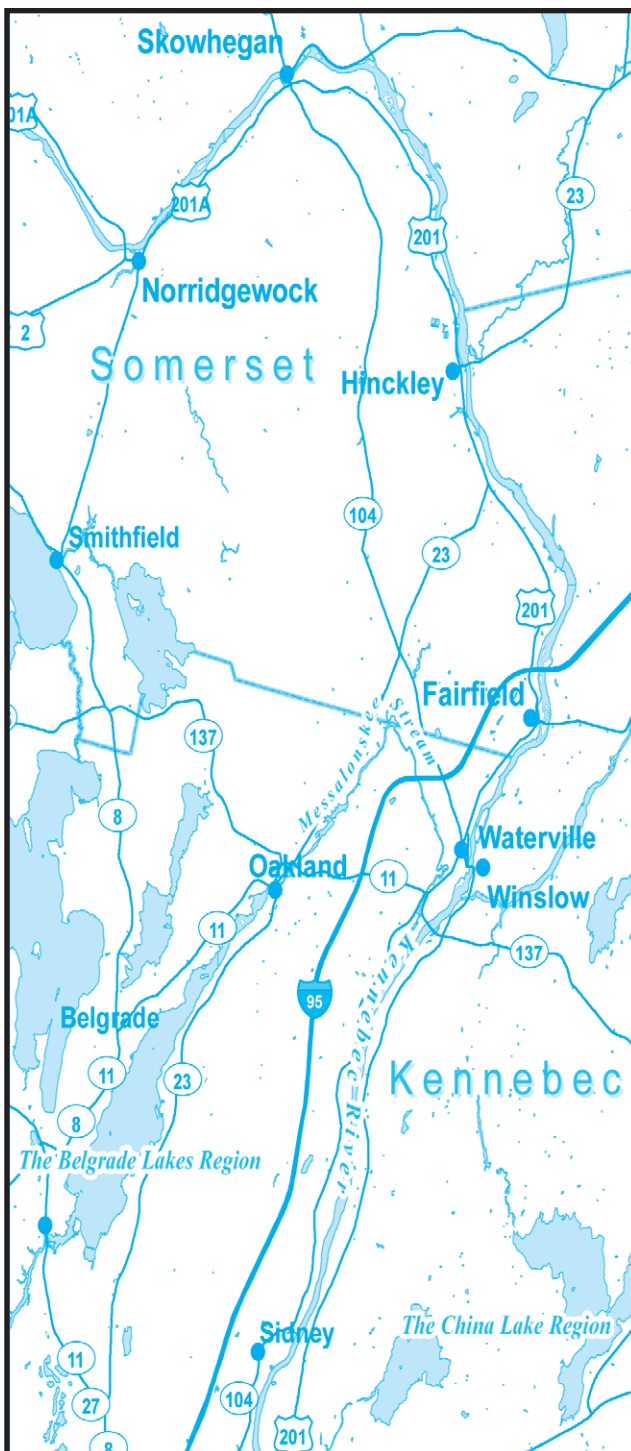
Wednesday 8/3 - "The Barber of Seville," 1 pm, "Henry V," 7:30 pm, 933-9999, Cumston Hall, The Theater At Monmouth.

Wednesday 8/3 - Public Supper, final of the season, baked ham, potato, vegetable, bread, beverage, dessert, 5 pm, Fairview Grange, Main Street, Route 8, Smithfield.

Wednesday 8/3 - Author Joyce Lovely, "God, Gasmasks and Ice Cream," presentation, selling and signing, 6 pm, 495-3508, Belgrade Public Library, 124 Depot Road, Belgrade.

Thursday 8/4 through Sunday 8/7 - "Death by Design," 474-7176, Lakewood Theater, Route 201, Madison.

Kennebec Corridor



Thursday 8/4 - Invasive Plant Patrol Workshop - Kayak/Canoe coves of Messalonskee Lake to ID native and invasive plants, learn how to be a responder, some kayaks available, please RSVP, www.friendsofmessalonskee.com, Oakland, Belgrade, Sidney.

Thursday 8/4 - "Love's Labour's Lost," 1 pm, "Cyrano," 7:30 pm, 933-9999, Cumston Hall, Theater At Monmouth.

Thursday 8/4 - Museum After Hours with Presentation: "History and Use of the Sanborn Insurance Maps," tours, presentations on programs and future direction,

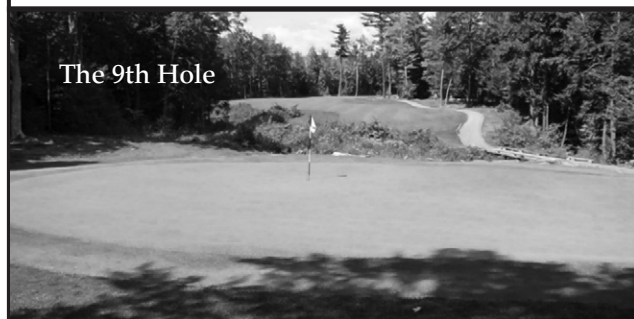
Continued on page 7...

**THIRTY-SIX
GREAT REASONS**
MAINE'S ONLY 36-HOLE
PUBLIC GOLF COURSE
THE LARGEST GOLF FACILITY
NORTH OF BOSTON

Championship Golf, Full Pro Shop,
Driving Range, & Modern Clubhouse.
Groups Welcome

Natanis
GOLF COURSE

Webber Pond Road,
Vassalboro, ME • 207-622-3561



LakeHouse™
Renovations

Design • Build • Renovate

**Traditional Style Camps,
Cottages and Lakefront Homes**
207.242.3663
www.lakehousedesignbuild.com

ACME LAND SURVEYING, LLC
Professional Land Surveyors - Professional Foresters
Property Surveys, Subdivisions, Topographic Surveys, MLIs,
Elevation Certificates/LOMs, ALTA/ACS Surveys,
Deed Research, Wetland Delineation, Forest Management

108 Fairbanks Rd., Suite 5
Farmington, ME 04938
Website: www.acmelandsurveying.com

Tel. (207) 778-4081
Toll Free (800) 778-4081
Email: info@acmelandsurveying.com

Expanded in 2014 to Better Serve Our Customers

**Belgrade Lakes
Marine & Storage, Inc.**

Winter Storage for Summer Vehicles
Secure newer storage facilities accommodate boats on trailers,
autos, and the largest RVs in 3 buildings totaling over 21,000 sq. ft.
Electrical charging outlets are available. Reasonable rates for real
protection from extreme winter storms and sun damage.

207-495-2378 • www.belgradelakesmarine.com
366 Augusta Road, Route 27, Belgrade, ME

Whatever needs updating at your house, we
have the **home equity loan** to get you started.

5-year	10-year
4.21% APR¹	4.61% APR¹

Apply Today! Stop by your local Maine State Credit Union branch
or call us at 623-1851.

¹The rate listed above is a fixed rate for a second mortgage. Closing costs and certain property/equity requirements apply. Rates presented above are for individuals with credit scores of 680 or higher. Individuals with credit scores of 679 and lower will receive a rate of 1.00% higher for each loan type. Loans are subject to approval and certain conditions may apply. ²The annual percentage rate (APR) for the 5-year home equity loan is 4.213% and is 4.612% for the 10-year fixed home equity loan. The APR is subject to change at anytime. Repayments for the 5-year loan are \$18.42 per \$1,000 for 60 months and \$10.36 per \$1,000 for 120 months for the 10-year loan. Federally insured by NCUA. Equal Housing Lender.

Maine State Credit Union
Doing Business the Maine Way



Lynch

LANDSCAPING INC
FOR THOSE WHO DESIRE QUALITY

Design - Install - Maintain

Lake Smart Certified for all your Waterfront Needs

Plant Intallation, Patios, Walks, Permeable Pavers Driveways, Plant Maintenance, Mowing, Fertilizing, Spring & Fall Clean Up

Serving all of Central Maine

474-2420

www.lynchlandscaping.com

Belgrade Vacation Rentals

CAMP & COTTAGE RENTALS

Located next to Pete's Pig Barbecue!

Contact Us Today!

(207) 495-4011

www.BelgradeVacationRentals.com

Own A Property? We Will Rent it for You!

RAILROAD SQUARE CINEMA

Showing the Best of World and American Cinema

17 Railroad Square, Waterville, Maine, 04901

24-hour movie info:
207-873-6526

www.railroadsquarecinema.com

Home of the
Maine International Film Festival
(July 8 - 17, 2016)
www.MIFF.org

COLBY MUSEUM OF ART

A USABLE PAST

American Folk Art at the Colby College Museum of Art

July 9, 2016–January 8, 2017

Colby College Museum of Art, Waterville, Maine
colby.edu/museum 207.859.5600

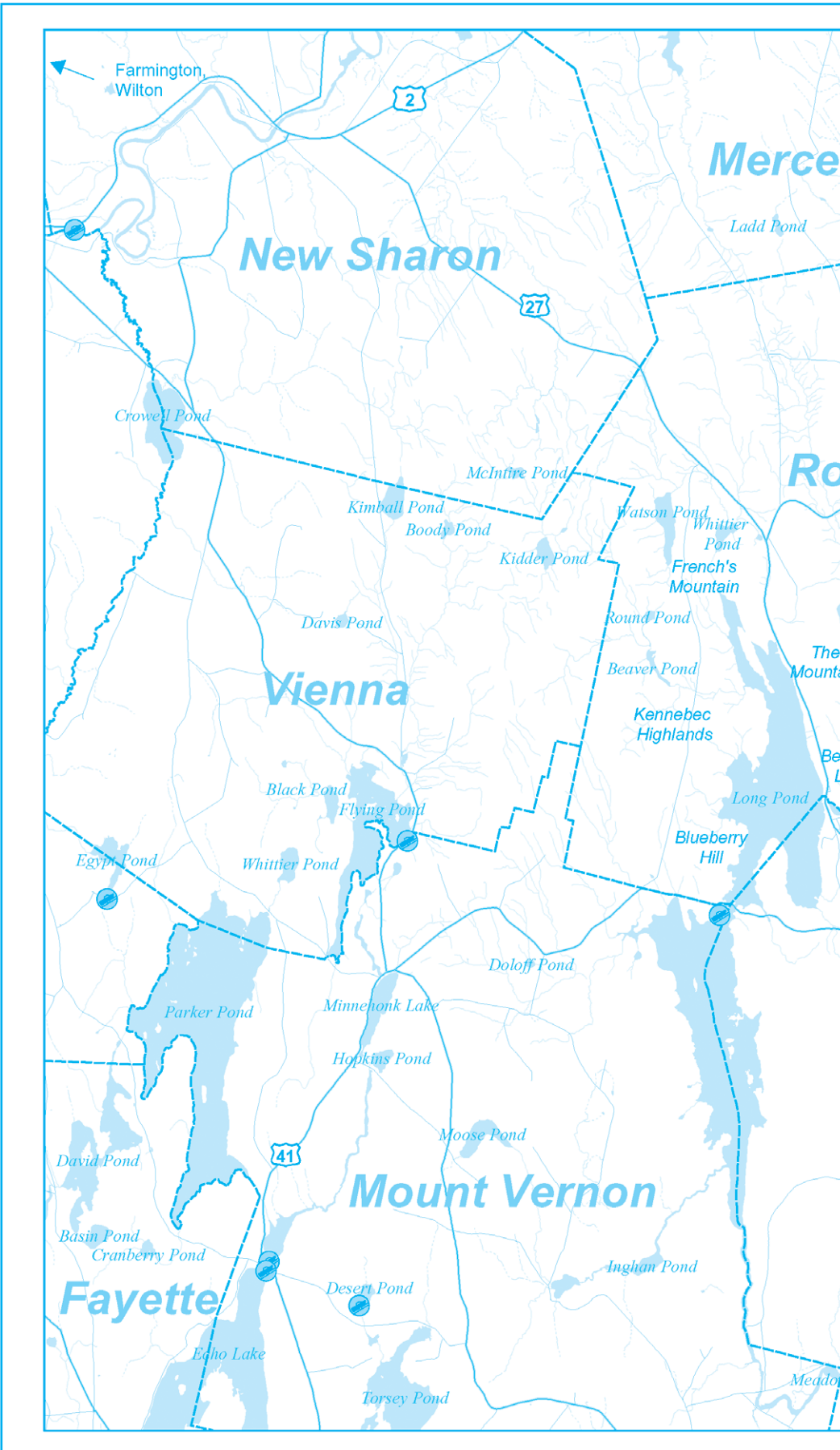
ST. MICHAEL SCHOOL

56 Sewall Street, Augusta, ME 04330
207.623.3491 www.smsmaine.org

NEW Fall 2016... PRE-K for 3 year-olds!

St. Michael School will be opening a new Pre-School Program for 3 year-old children starting in the fall. This Program will have a curriculum, daily schedule and an overall program that is consistent with the mission and values that have been associated with a St. Michael School education. Register your child TODAY!

**A Legacy of Excellence,
a Foundation for the Future.**



EYE CARE OF MAINE

"Your Sight is Our Vision"

- Comprehensive Eye Exams
- Eyewear Center / Contact Lenses
- State of the Art Cataract Surgery
- Retinal Diseases and Glaucoma
- LASIK Refractive Surgery
- Laser Surgery
- Oculoplastic Diseases
- Botox, Juvederm and Latisse

Ambulatory Surgery Center

www.Maine2020.com

Steve R. Witkin, M.D.

Peter C. Kohler, M.D.

James R. Putnam, M.D.

Marc B. Daniels, M.D.

Helen Bell-Necevski, O.D.

Lorie Lepley Parks, O.D.

Michael C. Parks, O.D.

Ian M. Jones, O.D.

325A Kennedy Memorial Drive
Waterville, Maine 04901

873-2731
(800) 660-3403

RIVERSIDE FARM

RESTAURANT & WINE MARKET

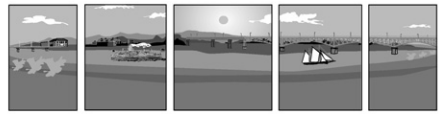
Restaurant Hours:
Brunch
Saturdays & Sundays - 10am-2pm
Lunch
Tuesdays - Fridays - 11am-2:30pm
Dinner
Thursdays - Saturdays - 5:30pm-8:30pm

Wine Market Hours:
Tuesdays - Fridays - 10am-5:30pm
Saturday - 10am-3pm

291 Fairfield Street
Oakland, ME 04963

For reservations call 207-465-4439

RiversideFarmMarket.com



RIVERFRONT BARBEQUE & GRILLE

WORLD CLASS BARBEQUE

SEAFOOD, PASTA, & VEGETARIAN ENTREES

207.622.8899

300 WATER STREET, AUGUSTA, MAINE

WWW.RIVERFRONTBBQ.COM

FULL SERVICE DINING * CATERING * BULK TAKE OUT



The Gin Mill

Augusta, Maine

*Augusta's finest upscale lounge featuring
fine wine, martinis, and over 100 brands
of beer from Germany to Japan*

**Thursday thru Saturday 3:00pm until Midnight,
Above the Riverfront Barbeque & Grille
at 300 Water Street
207.620.9200**

Lakepoint REAL ESTATE

"Put The Team to Work For You"

207.495.3700

GAIL RIZZO 207-242-8119
gail@gailrizzo.com



PAT DONAHUE 207-730-2331
pdcamp@msn.com



**GREAT POND SHARED,
BELGRADE:** Hoyt Island
3BR cottage steps from
lake w/ views. Seasonal
ferry service, clubhouse,
laundry facilities.
#1143354 \$221,000



**GREAT POND,
BELGRADE:** 2BR/1BA
Part of Hoyt Island Camps
sharing 15 acres, 2100'
waterfront with own dock,
club house, laundry.
#1230934 \$165,000

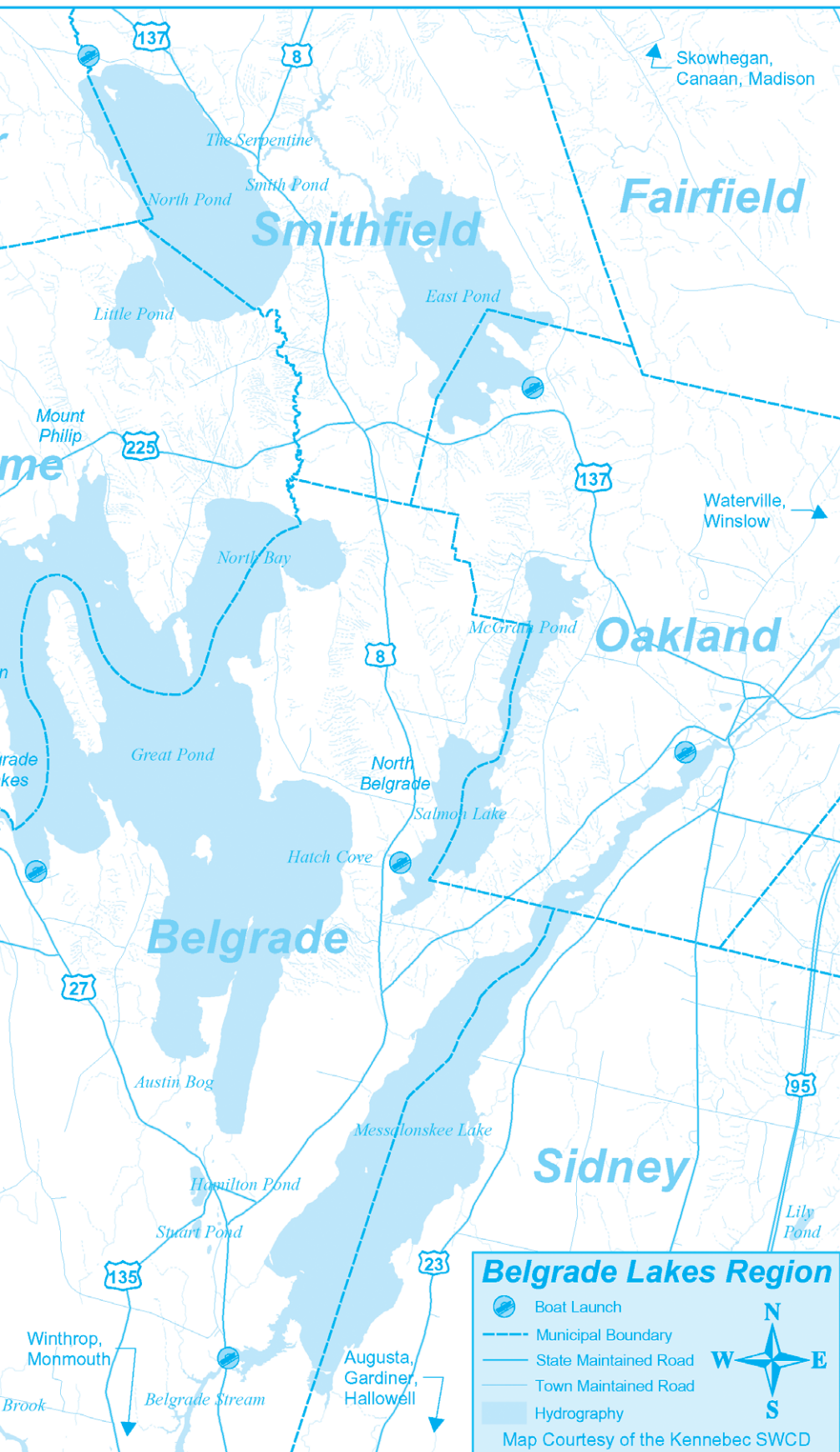


LONG POND, ROME:
Yr-rnd 3BR/3BA, DR, LR
w/fireplace, deck, 200'
lakefront, 2 car gar,
walking distance to
Belgrade Lakes village.
#1248911 \$599,900



**LONG POND, MT
VERNON:** 200' Lakefront
on 2.16 acres. Soils
tested for 6-bedroom
home. Surveyed, level
building lot. #1259551
\$229,500

221 Main Street, Belgrade Lakes, Maine 04918



Visit the Businesses on Marina Drive

sadiesboathouse@hotmail.com

• 207-495-4045 •

Like us on Facebook!

Open Friday & Saturday

from 5 PM – 9 PM



Family Fun Days BOAT RENTALS



**GREAT
POND
MARINA**
INCORPORATED
O'Brien Water-Sports Pro Shop

**Don't Be Left
Standing On
The Dock**

**Call for
Reservations:
495-2213**

www.greatpondmarina.com
Belgrade Lakes

Open Every Day 8-5

ShoreStation®

The original since 1959

**Why Shore Station?
Docks & Boat Lifts
Dependable, Rugged.**

**Docks = Stability
A-frame stance handles
a 6,000lb boat**

Boat Lifts 1,500 to 15,000 lbs.

Shoreland'r Trailers

Brown Dock Services

www.browndockservices.com

George: 495.2600 Jason: 316.7514

Display Docks & Lifts at Great Pond Marina



ShoreStation® The original since 1959

Clark Marine

Manchester - Monmouth - Belgrade

**We Service
Honda, Mercury, Evinrude,
and Yamaha Motors**

Keeping You On The Water!

207-622-7011

57 Puddledock Rd.

Manchester, Me.



Check-Out Our
New Boats



www.ClarkMarineMaine.com

G & L CONTRACTING

- New Construction
- Additions
- Dock Installations
- Construction

www.gandlcontractingmaine.com

207-495-9009

Lakeside Cottage Rentals



**Exclusive
Lakeside
Rentals in the
Belgrade
Lakes Region**

Located off Rt 27 in Belgrade Lakes

(207) 495-4046

www.LCRentals.com

Waterfront Property Owners

We offer full service rental management services. Please
call if you are interested in having us manage your home.



— Upcoming —

AUGUST

- The Maine Highland Fiddlers will be playing at the Sawyer Memorial, 371 Sawyer Road, Greene on August 5 at 2 and 7 pm. Free admission. 946-5311
- Britannica Acoustic Duo will perform at the Belgrade Community Center for All Seasons to benefit the Belgrade Public Library on Friday, August 5 at 7 pm. 495-3111
- August 11-20 are the dates of the Skowhegan State Fair, featuring a huge midway, animal exhibits, crafts, commercial exhibits, flower shows, animal pull events and harness racing.
- On Saturday, August 13 at 7 pm the Union Coffeehouse in Belgrade Lakes will provide two hours of singing entertainment. Ruth Hill, folk and bluegrass singer, will be the featured performer; open mic will follow. Donation \$5 at the door includes refreshments.
- An Ice Cream Social and RB Hall Band Concert will be held on Tuesday 8/16 (rain date August 23) at 6 pm at the Oakland Historical Society Macartney House Museum. 649-4942
- "Maine's Wabanaki Native Americans" will be presented by Ken Hamilton at the Belgrade Historical Society meeting at the Maine Lakes Resource Center, Belgrade Lakes, on Thursday, August 18 at 7:30 pm. 495-2310
- The Annual Sidewalk Art Festival in Winthrop will be Saturday, August 20, 10 am- 3 pm, with a showcase of regional artists, sales, food, music and recreation. 377-8020
- On Wednesday and Thursday, August 24 and 25, 9 am-4 pm, the annual Maine Farm Days will be held at Misty Meadows Farm in Clinton, a large dairy farm (over 800 cows) that grows hundreds of acres of crops. There will be a kid's tent, equipment displays, a wagon tour, many exhibits and concessions - all free to the public. www.MaineFarmDays.com
- On August 24-27, the 47th Blistered Fingers Family Bluegrass Music Festival will be held at Litchfield Fairgrounds with 12 bands, Kids Academy, camping, food, field pickin' and more. Children 16 and under free with adult. 873-6539
- December '63, Frankie Valli & The Four Seasons Tribute Concert will be held on Thursday, August 25 at the Bowl In The Pines, Snow Pond Center for the Arts, Sidney. 844-476-6076
- The Windsor Fair is Sunday August 28 through Labor Day, September 5, with free parking every day, season passes, campground reservations at 446-6461, race simulcasting daily, many barns and exhibition halls, an Historical Society museum, midway and full entertainment schedule. Gate open at 9 am every day. www.windsorfair.com



DON'T WAIT UNTIL NEXT SPRING!

Schedule boat top, cover and seat repair work for the OFF SEASON. Some items can be left with us all winter for SPRING DELIVERY!

Call Now for more information

Repairs & Alterations Welcome!

ATTENTION BOAT OWNERS
Tops, Covers & Interiors for Boats

WATERVILLE UPHOLSTERY & CANVAS
watervilleupholstery.com



1-1/2 Miles West, Exit 127, I-95,
Kennedy Memorial Drive, Oakland • 465 - 7847



ROCK FOR THE DOCK



**A fundraiser to benefit
the dock-purchase fund for the
Belgrade Lakes Youth Sailing Program**



with special guest Molly Gibbs

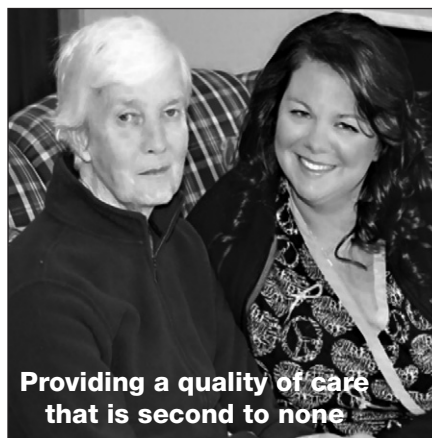
Saturday July 30 • 6 – 9pm
Loon Cove Community Building
End of Loon Call Drive • Off Smithfield Road (Rt. 8), Belgrade

\$20 per person • BYOB

PAY AT THE DOOR • PROCEEDS BENEFIT BELGRADE LAKES YOUTH SAILING PROG.

BEDSIDE MANOR

ALZHEIMER'S CARE FACILITY



**Providing a quality of care
that is second to none**



MAKING EVERY DAY SPECIAL

- 24-Hour Alzheimer's and Dementia Care
- Respite Care *(based on availability)*
- Adult Day Service *(based on availability)*
- Private, Secure, Non-institutional
- Creative Activities
- Occasional Outings
- Salon Service
- Compassionate Staff

461 Belgrade Road, Oakland, ME 04963
(207) 465-2527

210 Country Club Road, Oakland, ME 04963
(207) 465-8382

Find Us On Facebook

www.bedsidemanorcare.com



—Conservation Too—

Local Dairy Farm Conserves Grassland Bird Habitat

Guest author Laura Suomi-Lecker at Somerset SWCD

In a first-time partnership effort, Gold Top Dairy Farm of Knox Ridge collaborated with the Somerset and Waldo County Soil and Water Conservation Districts this summer to conserve more than 40 acres of active hayland as grassland bird habitat. Gold Top farm is run by brothers Mike and Greg Ingraham and their wives Jackie and Shirley, Greg's son, Isaac and employee, Alex Green. The farm, started in 1876 and now on its fourth generation, is an icon in the town of Knox, and consists of 1400 acres. Ingrahams milk 400 cows.

In return for an incentive payment to help offset loss in forage quality, Mike, Greg and family consented to delay mowing on a particularly productive parcel of active bobolink habitat at the end of June. This was a tremendous conservation effort, and resulted in the fledging of at least 50 bobolink youngsters last week. Bobolink family groups were up and about by Friday afternoon, July 8th, gliding over the grassland, hunting for insects and making their joyous calls. In addition to hosting bobolinks, the fields were also nesting grounds for savannah sparrows and possibly a meadowlark family. Incentive funds were provided by the Davis Conservation Foundation for the Somerset County District's Agricultural Allies program, an outreach and education project intended to encourage safe nesting habitat for grassland birds. Bobolinks are a historic sight and sound each spring in the fields and meadows of Maine. In addition to being a delight to see and hear, bobolinks and other grassland birds are true agricultural allies to central Maine farmers as these birds consume large quantities of both insect pests and weed seeds each growing season. Unfortunately, the population of these beneficial birds has been in a steady and precipitous decline since the 1960s, according to the State of the Birds 2014 (www.stateofthebirds.org) report. The bobolink appears on their Watchlist of bird species most in need of conservation action. Here in Maine, the reason there is habitat for these birds at all is because of our agricultural landscape. Unfortunately, however, most hayfields are cut at least once during the nesting timeframe (end of May – mid July), which results in total nestling mortality, a pattern that plays out across the northeast.

Ingraham's delay in mowing, just over a week in



Gold Top Farm grassland bird fields



Recently fledged juvenile bobolink

duration, was the key to survival for this large group of bobolink nestlings. The willingness of the Ingrahams to work with the Districts on this issue (even extending the delay past the agreed timeframe, allowing additional time for late nesters) was a tangible and significant

benefit for the grassland birds of central Maine.

It is not only farmers who can help grassland birds, however. "Everyone can have a hand in helping these birds", says Laura Suomi-Lecker, Technical Director for Somerset County SWCD. "If we as the general public could leave grass areas un-mowed until August 1st, including letting some lawn area 'go natural', we could help create non-competitive grasslands for birds, pollinators and other wildlife." Reducing manicured lawn in favor of meadow creation not only benefits wildlife, but it saves time, fuel

and money for landowners, making it a true win-win situation. We encourage people to contact the Somerset County SWCD (at 474-8324 x 3; www.somersetswcd.org) to find out other ways that they can get involved with this critical conservation effort

For information about any of our conservation projects please contact Dale Finseth at 622-7847, x 3 or check our website at www.kcswwcd.org



Masonry

Fireplaces • Stonework
Chimneys • Waterproofing
Chimney Inspection
Restoration • Chimney Liner

Alan Berube

213-8815
Sidney, Maine

SPIRO & COMPANY

Gourmet Food Truck "A Fresh Taste of Greece"

Belgrade Lakes • 441-2103

Open Sun-Wed 11-4, Thurs-Sat 11-7

www.spiroandcompany.com

Bear Spring Camps

- Waterfront cottages
- Home-style meals
- Bass, pike, and brown-trout fishing
- Boats, motors, docks
- Sandy beach
- 3.5 hours from Boston
- May-September



on Great Pond in the
Belgrade Lakes Region

www.bearspringcamps.com

207-397-2341

**Visit Us for
All Your
Local Foods!**

**Fresh Veggies • Bakery •
Milk • Eggs • Beer • Wine & More**
Open Monday-Friday 9-5 • Saturday 9-4
318 Readfield Rd. (Rt. 17), Manchester
207 622 2479

Specializing In

CAMP JACKING AND LEVELING

John Webster
32 Webster Way
Belgrade, ME 04917

Sill Replacement
Retaining Walls

(207) 495-2965
35+ Years Experience

GENERATORS of MAINE
495-2285

Doug Sawyer, Owner
Cell: 207-215-0617
doug@generatorsofmaine.com
www.generatorsofmaine.com
262 Augusta Road • Belgrade, Maine

**KOHLER
Generators**
Authorized Dealer

Call Us For Boat Tops, Covers & Interiors

Keep You and Your Boat Clean & Dry

Protect the Interior
Repairs & Alterations
Welcome!

Pontoon Boats Too!

WATERVILLE UPHOLSTERY & CANVAS
(watervilleupholstery@outlook.com)

1 1/2 Miles West Exit 127, I-95, KMD, Oakland
465-7847



BELGRADE REGIONAL HEALTH CENTER

*New Patients
of All Ages
Welcome*

4 Clement Way, Belgrade
207-495-3323 | BelgradeCHC.org

ALDEN CAMPS
Est. 1911

• Lobster Bakes on Friday nights by Reservation
• Lakeside Cottages • Boats & Motors
• Full American Plan
• Dining on the Porch by reservation Saturday through Wednesday

3 Alden Camps Cove
Oakland, Me 04963
(207-465-7703)

E-mail: info@aldencamps.com • Website: www.aldencamps.com

CHILDREN'S BOOK CELLAR

BOOKS, PUZZLES, TOYS, GAMES

A store for children of all ages, the young and the young at heart.

Open Monday 12 to 5 • Tues. - Sat. 9 to 5
52 Main St. Waterville 872-4543

DAVID STEVENS
Excavation & Septic Systems

LOAM GRAVEL SAND
465-3815
Cell: 314-0314
P.O. Box 146 • Belgrade, Maine 04917

CASTLE ISLAND CAMPS

Boats, Bait, Tackle, Gas, Kayaks

Boats, Daily or Weekly
495-3312
Rentals for Long Pond Only

David J. Auclair
www.auclaircycle.com

AUCLAIR CYCLE & SKI

64-66 BANGOR ST. AUGUSTA, ME 04330
623-4351 / 800-734-7171 • Fast Professional Service
Bicycles • Skateboards • Roof Racks • Rentals

NEW MAINE TOURMALINE JEWELRY.

L. TARDIF JEWELER
62 Main Street Waterville, Me.

est. 1935

Tues - Sat 9 - 5

— Accommodations —

Alden Camps, lakeside cottages on East Pond, established 1911, American Plan meals, boat and motor rentals, dining and lobster bake open to public by reservation, 3 Alden Camps Cove, Oakland, 465-7703, www.aldencamps.com

Bear Spring Camps, waterfront cottages on Great Pond, home-style meals, sandy beach, boats, motors, docks, 60 Jamaica Point Road, Rome, 397-2341, www.bearspringcamps.com

Castle Island Camps, cottages on the water, Long Pond, American Plan meals, boat and kayak rentals, Castle Island Road, Belgrade Lakes, 495-3312, www.castleislandcamps.com

Whisperwood Cottages, overlooking Salmon Lake, American Plan

meals, fishing boat rentals, open to the public for dining by reservation only, 103 Taylor Woods Road, North Belgrade, 465-3983, www.whisperwoodlodge.com

Wings Hill Inn, historic Inn & Restaurant, casually elegant accommodations, centrally located in Belgrade Lakes Village, Route 27, Belgrade Lakes, 495-2400, 866-495-2400, www.wingshillinn.com

Belgrade Vacation Rentals, lakeside camp and cottage rentals throughout the area, long and short stays, many size accommodations and rates, 81 Main Street, downtown Belgrade Lakes, 495-4011, www.belgradevacationrentals.com

Lakeside Cottage Rentals, featuring over 70 private homes, 24/7 customer friendly service, 25 Marina Drive, Belgrade Lakes, 592-5577, 495-4046, www.lcrentals.com



Notebook

Siesta Sanctuary

• Hear parrots talk and sing. See beautiful birds. Visit Maine's inland parrot sanctuary at 104 Brown Road in Harmony. August 13 and 14, noon to 5 pm, the sanctuary will be holding Open House. Come meet the parrots. 683-6322

Augusta

• You're invited to the 46th Annual Golf Scramble of United Way of Kennebec Valley on Monday, August 15 at the Augusta Country Club. There will be a Hole in One, Putting Contest, On the Green/Off the Green, Closest to the Line, Raffles and Lunch & Dinner. Tee Off at 12 pm. Reserve Your Spot today! 626-3400

Belgrade

• Mind Body Spirit/B-Well Revolution Festival! Saturday August 13, 10 am-4 pm. Rejuvenate your spirit with holistic healing therapies, natural and organic skin care products, crystals, gems and jewelry, readings from psychics and mediums, aura/chakra readings, medical intuitive, past life readings, enlightening workshops for children and adults, and a lot more. \$5 admission includes most workshops; other workshops require paid tickets. Belgrade Community Center for All Seasons, Belgrade Lakes. www.mindbodyspiritfestival.org

Belgrade Lakes author Maureen Milliken has recently had a second book in her Bernie O'Dea mystery series released. "No News is Bad News," a grisly murder mystery, is set in northern Franklin County. The book is available at Children's Book Cellar in Waterville and at Pine Bluff Farm Store and Day's Store in Belgrade Lakes.

The 1st Annual Belgrade Regional Conservation Alliance Open at the Belgrade Lakes Disc Golf Course will take place on August 20, 7:30 am-4:30 pm. In partnership with the Belgrade Lakes Disc Golf Course and the Maine Golf Tour, the BRCA will co-host a disc golf tournament for participants of all ages (children under 13 require adult supervision); cash prizes for winners. 495-6039

Hinkley

• Train to be a junior docent for the museum. Are you in junior high or high school and love the museum? We are training young people to learn to be a museum docent for three mornings in a row, August 11-13, 10 am-noon, with fun hands-on tips, projects to discover and behind the scenes wonders. Ages 10-18. 238-4250

Mercer

• 80 years is a lot to celebrate...and celebrate, they will.

Join in for laughs with Juston McKinney on Friday, August 5 at 7 pm at the Mercer Community Center. Tickets are \$20. Wave with us as the parade goes by, join us for laughs at the kids' activities, eat Maine Lobster, enjoy a show, and dance the night away at Mercer Old Home Days. 587-2225

Monmouth

• Non-equity performers are being sought for the Theater at Monmouth's tour of "The Tempest." Auditions will be held Saturday, July 30, 10 am at Helen Melledy Hall, 775 Main Street. The 5-week contract begins rehearsals September 25; the production tours October 10-29. Please prepare a 2-minute monologue from the play. 933-9999

Readfield

• RSU 38 Maranacook Adult Ed: Look for our Fall catalog in your mailbox the 2nd week of August. We have lots of brand-new classes! For details and to view all classes, go to: <http://maranacook.maineadult-ed.org> 685-4923 x1065

Sidney

• Snow Pond Center for the Arts and the New England Music Camp are excited to welcome Alumni Visiting Artist, violinist, Giora Schmidt, From July 25-31. Giora will play several free performances throughout the week and will be conducting master classes and workshops with various students. Performances include: Saturday, July 30, 3 pm - Carmen Fantasy by Pabla De Sarasate and Sunday, July 31, 3 pm - Violin Concerto No. 1 in G minor by Max Buch. 844-476-6976

Wayne

• The Cary Library's Annual Silent Auction starts Thursday, August 4 with an informal Opening Reception, 5-7 pm at the Williams House, 14 Old Winthrop Road. Items will include handcrafts, furniture, glassware, needlework, framed art, vintage attic treasures, quilted pieces, jewelry, children's products, and a classic plywood dinghy built and donated by Chris Cushman of Androscoggin Wooden Boatworks in honor of his niece Heather Black who recently passed away. Bidding is in person starting 9 am-3 pm August 6, the day of the Library's 5K, Cary Festival and Lobster Roll Lunch, and will close at noon on Saturday, August 13. 685-3612

Winthrop

• Looking for paddle boats. Do you have a paddle boat in good condition that you don't use anymore? Please consider donating it to Camp Mechuwana. Paddle boats are popular, especially with the younger campers. 377-2924





Dining

Augusta

• **Riverfront Barbeque & Grille and Gin Mill Lounge**, world class barbeque, seafood, pasta and vegetarian entrees, full service dining, catering, bulk take out, 300 Water Street, Augusta, www.riverfrontbbq.com, 622-8899

Belgrade

• **Pete's Pig**, 81 Main Street, sandwiches and platters for picnic-style eating on the premises or to go, also offering a full range of catering, Main Street, Belgrade Lakes Village, 495-4095, www.petespig.com

• **Sadie's Boathouse Restaurant at Great Pond Marina**, hearty contemporary American fare, 25 Marina Drive, Belgrade Lakes, 495-4045, 242-1273

• **Spiro & Company**, gourmet Greek food, Main Street, Belgrade Lakes Village, www.spiroandcompany.com, 441-2103

• **The Village Inn and Tavern**, 157 Main Street, Route 27, Belgrade Lakes Village, 495-3553, www.villageinnandtavern.com

• **Whisperwood Lodge and Cottages**, Salmon Lake/McGrath Pond, homestyle cooking, traditional fishing camp diningroom, open to the public by reservation only, 103 Taylor Woods Road, Belgrade, 465-3983, www.whisperwoodlodge.com

• **Wings Hill Inn and Restaurant**, gourmet fine dining in historic inn, daily culinary chef's specialties, Route 27/Main Street, Belgrade Lakes Village, www.wingshillinn.com, 495-2400 or 800-495-2400,

• **Winterberry Farm Café**, homemade treats, pie, cookies, granola bars, grilled organic cheese sandwiches, veggies, drinks, Route 27, Belgrade, 649-3331

Manchester

• **Lakeside Orchards**, bakery, veggies, dairy products, drinks, 318 Readfield Road, Route 17, Manchester, 622-2479

Oakland

• **Alden Camps**, lunch or dinner by reservation Saturday-Wednesday space permitting, lobster bakes on Friday night by reservation, 3 Alden Camps Cove, Oakland, www.aldencamps.com, 465-7703

• **Riverside Farm Restaurant & Wine Market**, simple, wholesome food and drink since 1990, 291 Fairfield Street, Oakland, www.riversidefarmmarket.com, 465-4439

Oakland-Wines & Spirits

• **Tree Spirits**, tasting room for award winning wines and spirits made from local apples, pears and maple syrup, tours available, 152 Fairfield Street, Oakland, www.treespiritsofmaine.com

Smithfield

• **Smithfield Ice Cream Place**, lunch, dinner and dessert, 855 Village Road, smithfieldicecreamplace.com, 368-5039

Waterville Festival Offers Something for All "Tastes"

On Wednesday, August 3, the Mid-Maine Chamber of Commerce presents the day-long festival, now in its 24th year and a perennial favorite of locals and visitors to mid-Maine alike. Locals enjoy attending as they can catch up with old friends and visitors get to enjoy what the region has to offer.

In recent years, the Taste has grown to be mid-Maine's largest outdoor festival with average crowds of up to 10,000, becoming a day-long family event which not only features an array of restaurants but a variety of entertainers and vendors with free admission. Downtown businesses will also be offering specials and activities at their locations and local gymnastic and dance studios will perform starting at 5pm on Main Street.

Another highlight of the event is the ever-popular Beer Garden, open from 5-11 PM in the Concourse and featuring live music.

The Taste offers something for everyone. A full day of children's activities is planned for families, and rows of vendors offer items and activities for all interests. There will be snacks and meals throughout the day, and Main Street will be lined with area



restaurants offering up à la carte dinner options beginning at 5PM.

For a full schedule of events, menus, parking and more, visit www.tasteofwaterville.com or call Mid-Maine Chamber of Commerce at 873-3315

Mind Body Spirit/B-Well Revolution Festival Saturday, August 13 Belgrade 10:00-4:00

Massage, Reiki, crystals, gems, jewelry, psychics and mediums, organic health products, workshops, and a lot more. \$5.00 admission includes most workshops. Belgrade Community Center for All Seasons, 1 Center Drive, Route 27, Belgrade. www.mindbodyspiritfestival.org



Jeannie G., LMT

Licensed Massage Therapist

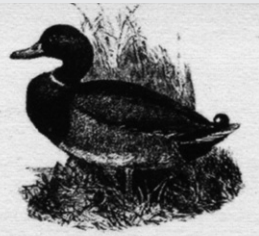
120 Drummond Avenue, Suite 1
Waterville, Maine 04901

Phone: **207-509-1251**

Veteran, Student, Loyalty and Referral Discounts



An essential component of Self-care, massage therapy improves heart rate, blood pressure, circulation and decreases stress levels thereby improving one's well-being. Call for flexible scheduling, Monday through Saturday.
Member AMTA



157 Main Street/RT 27
Belgrade Lakes, Maine 04918

villageinnandtavern@gmail.com

207.495.3553

www.villageinnandtavern.com

THE
VILLAGE INN
AND TAVERN
Belgrade Lakes, Maine
SINCE 1921



Fayette – David Pond – Immaculate custom 4 bedroom/3 bath lake-front Ranch with walkout basement on tranquil and pristine David Pond. Open floor plan with hardwood floors, Anderson windows, Cherry cabinets, granite and stainless kitchen, radiant heat, ductless A/C, security system, 12 kva generator, oversized garage, screen porch, 3.8 acres, 201' frontage. **\$473,000**. Adjoining 3.1 waterfront lot also available for only **\$125,000**.

Call Brian Rizzo at Rizzo Mattson, Realtors
RE/MAX



219 Capitol St., Augusta 622-9000 ~ 215-9793
brizzo@rizzomattson.com

WHISPERWOOD LODGE & COTTAGES

Located on the South end of Salmon Lake in North Belgrade

Fishing Boat Rentals on Salmon Lake & McGrath Pond

All boats shown on our website

Now open to the Public for Dining by reservation only. 465-3983

Breakfast 8:am - 9:am, Dinner served at 5:pm
Daily menu listed on our website
Boat docking available for Lake Residents

www.whisperwoodlodge.com

Winterberry Farm

WINTERBERRYFARMSTAND.COM

Route 27, Belgrade
207.649.3331

CAFÉ AT WINTERBERRY FARM
Fresh Salads, Veggie and Cheese Sandwiches and Soups
Come have lunch or afternoon tea at the farm!

Belgrade's working family farm

FARMSTORE & CAFÉ
Open 7 days a week, 9am - 6pm
Featuring all-organic products grown and produced here on the farm.
3 miles south of Belgrade Lakes Village on route 27.

F. A. Rizzo Appraisal Company

Frank Rizzo

Consultant/Appraiser

**Estate Appraisal
& Planning**

Certified Residential cr709

tel. (207) 495-3365

cell (207) 458-4916

farizzo@roadrunner.com



Since 1992



**Now Booking
for 2017**

- Corporate Functions
 - Weddings & Rehearsals
 - Special Events
- Call (877) 860-1503
(207) 495-4095

www.petespig.com

Maple Leaf Self Storage

Belgrade Me - 3.3 mi off Rte 27 on Route 135

495-2191

Various size units
Owners live on site



Boat / Auto Storage
By foot or unit

The Ice Cream Place

855 Village Road, Smithfield, ME
Across from the Post Office
362-5039 • Open 11am-9pm
smithfieldicecreamplace.com



Lobster Rolls

Pizza

Accessible by Boat from East Pond



-Business Directory-

ACCOMMODATIONS

See page 18

ART

Colby College Museum of Art, 5600 Mayflower Hill, Waterville, 859-4000, www.colby.edu/museum/

BANKING

Kennebec Savings Bank, 150 State Street, Augusta, 622-5801, www.kennebecsavings.com

Maine State Credit Union, 200 Capitol Street, Augusta, 623-1851, www.mainestatecu.org

Skowhegan Savings Bank, 450 Civic Center Drive, Route 27, Augusta, 1-800-303-9511, 623-2300, www.skowsavings.com

BEVERAGES

Tree Spirits, 152 Fairfield St, Oakland, 861-2723, www.treespiritsofmaine.com

BICYCLES

Auclair Cycle & Ski, 64 Bangor St, Augusta, 623-4351, www.auclaircycle.com

BOAT COVERS

Waterville Upholstery & Canvas, 1042 Kennedy Memorial Dr, Oakland, 465-7847, www.watervilleupholstery.com

BOAT LIFTS

Brown Dock Service, Marina Drive, Route 27, Belgrade Lakes, 495-2600, 316-7514, www.browndockservices.com

Hammond Lumber Company, Auburn, Bangor, Belgrade, Boothbay Harbor, Brunswick, Damariscotta, Fairfield, Farmington, Greenville, Pemaquid, Portland, Skowhegan, Wilton, 1 866-HAMMOND, www.hammondlumber.com

BOAT MOORINGS

Great Pond Marina, 25 Marina Drive, Route 27, Belgrade Lakes, 495-2213, www.greatpondmarina.com

BOAT RENTALS

Belgrade Canoe & Kayak, canoes, kayaks and paddleboards, 1005 Augusta Road, Route 27, Belgrade, 495-2000, www.kayakandcanoe.com

Castle Island Camps, Long Pond, 441 Castle Island Road, Belgrade Lakes, 495-3312, www.castleislandcamps.com

Great Pond Marina, 25 Marina Drive, Route 27, Belgrade Lakes, 495-2213, www.greatpondmarina.com

Whisperwood Cottages, Salmon Lake/McGrath Pond, 103 Taylor Woods Road, Belgrade, 465-3983, www.whisperwoodlodge.com

BOAT SALES AND SERVICES

Clark Marine, 57 Puddledock Road, Manchester, 622-7011, mail@clarkmarine.biz, funonthewaterstartshere.com

Hamlin's Marine, 290 West River Road, Waterville, 872-5660, www.hamlinsmarine.com

Mid-Maine Marine and RV, 885 Kennedy Memorial

Drive, Oakland, 465-2146, www.midmainemarine.com

BOAT STORAGE

Belgrade Boat Storage, 31 Pinkham's Cove Road, Belgrade, 495-3421, 314-3287, www.belgradeboatstorage.com

Belgrade Lakes Marine and Storage, Inc, 366 Augusta Road, Belgrade, 495-2378, www.belgradelakesmarine.com

Clark Marine, 57 Puddledock Road, Manchester, 622-7011; and Route 202, Monmouth, mail@clarkmarine.biz, funonthewaterstartshere.com

Hamlin's Marine, 290 West River Road, Waterville, 872-5660, www.hamlinsmarine.com

Maple Leaf Self Storage, 688 Manchester Road, Route 135, Belgrade, 495-2191, 441-5529

Mid-Maine Marine, 885 Kennedy Memorial Drive, Oakland, 465-2146, www.midmainemarine.com

BOOKS

Children's Book Cellar, 52 Main Street, Waterville, 872-4543, childrensbookcellar.com

BUILDERS

Craig's Carpentry/North Bay Estates, Route 8, North Belgrade, Craig Alexander, 649-3749

G&L Contracting, 116 Lakeshore Drive, Belgrade Lakes, 215-7951, 495-2325, 233-7408, gandlcontractingmaine.com

LakeHouse Design, Build, Renovations, 17 Birchwood Road, Augusta, 242-3663, www.lakehousedesignbuild.com

John Webster, jacking, raising, 32 Webster Way, Belgrade, 495-2965

BUILDING MATERIALS

Hammond Lumber Company, Auburn, Bangor, Belgrade, Boothbay Harbor, Brunswick, Damariscotta, Fairfield, Farmington, Greenville, Pemaquid, Portland, Skowhegan, Wilton, 866-HAMMOND, www.hammondlumber.com

COMPUTER CONSULTANTS

Macintosh Solutions, Michael Breault, 24 Welch Road, Wilton, 645-5083, cell 578-0226, www.michaelbreault.net

DEMENTIA/ALZHEIMER'S CARE

Bedside Manor, Alzheimer's Care Facility, 461 Belgrade Road and 210 Country Club Road, Oakland, 465-2527, 465-8382, www.bedsidemanorcare.com

DINING

See Directory on page 15

DOCKS

Brown's Dock Services at Great Pond Marina, 495-2600, 316-7514, www.browndockservices.com

G&L Contracting, 116 Lakeshore Drive, Belgrade Lakes, 495-2325, 215-7951, 233-7408, gandlcontractingmaine.com

Hammond Lumber Company, Auburn, Bangor, Belgrade, Boothbay Harbor, Brunswick, Damariscotta, Fairfield, Farmington, Greenville, Pemaquid, Portland, Skowhegan, Wilton, 866-HAMMOND, www.hammondlumber.com

ELDER CARE

Maine-ly Elder Care, 28 Center Street, Oakland, 465-3249, www.maine-lyeldercare.com

ENGINEERING

Thayer Engineering, septic design, storm water mitigation, permitting, 17 Hasson Street, Farmingdale, 582-7762, www.thayereng.com

ESTATE APPRAISALS

F.A. Rizzo Appraisal Company, estate appraisal and planning for real estate, 495-3365, 458-4916, farizzo@roadrunner.com

EXCAVATING

Belgrade Boat Storage, 31 Pinkham's Cove Road, Belgrade, 495-3421, 314-3287, belgradeboatrentals.com

David Stevens, P0 Box 146, Belgrade, 465-3815, cell 314-0314

EYE CARE

Eye Care of Maine, 325 E. Kennedy Memorial Drive, Waterville, 873-2731, 1-800-660-3403, www.Maine2020.com

FARMSTANDS

Lakeside Orchards, 318 Readfield Road, Route 17, Manchester, 622-2479

Winterberry Farm, 538 Augusta Road, Route 27, Belgrade, 495-2593, 649-3331, www.winterberryfarmstand.com

FINANCIAL PLANNING

Golden Pond Wealth Management, 129 Silver Street, Waterville, 873-2200, www.goldenpondwealth.com

FIREWOOD

J & M Logging, Inc. 853 Civic Center Drive, Augusta, 622-6353, www.jmlogginginc.com

FLOORING

Hammond Lumber Company, Auburn, Bangor, Belgrade, Boothbay, Brunswick, Damariscotta, Fairfield, Farmington, Greenville, Pemaquid, Portland, Skowhegan, Wilton, 866-HAMMOND, www.hammondlumber.com

GENERATORS

Generators of Maine, 262 Augusta Road, Belgrade, 495-2285, www.generatorsofmaine.com

GOLF

Natanis Golf Course, 735 Webber Pond Road, Vassalboro, 622-3561, www.natanisgc.com

HEALTH CENTERS

Belgrade Regional Health Center, 4 Clement Way, Belgrade Lakes, 495-3323, www.healthreachchc.org, belgradechc.org

Inland Hospital, 200 Kennedy Memorial Drive, Waterville, 861-3000, 1-800-491-8600, www.inlandhospital.org

MaineGeneral Medical Center, Alfond Center for Health, 35 Medical Center Parkway, Augusta; Thayer Center for



Health, 149 North Street, Waterville,
1-855-4463, www.mainegeneral.org

HOME HEALTH CARE

Assistance Plus, 1-800-781-0070 ext. 400,
www.assistanceplus.com

ICE CREAM

Smithfield Ice Cream Place, 855 Village Road,
smithfieldicecreamplace.com, 368-5039

JEWELRY

Larsen’s Jewelers, 57 Main Street, Waterville, 872-6301, 1-800-697-1874, www.larsensjewelers.com
L.Tardif Jeweler, 62 Main Street, Waterville, 872-7542, 1-800-834-3638, ltardiffjewelers.com

KITCHENS

Hammond Lumber Company, Auburn, Bangor, Belgrade, Boothbay, Brunswick, Damariscotta, Fairfield, Farmington, Greenville, Pemaquid, Portland, Skowhegan, Wilton, 866-HAMMOND,
www.hammondlumber.com

LAKE ASSOCIATIONS

Belgrade Lakes Association (BLA), Long Pond and Great Pond, PO Box 551, 137 Main Street, Belgrade Lakes, 512-5150, belgradelakesassociation.org

LANDSCAPING

G&L Contracting, Belgrade Lakes, 215-7951, 495-2325, 233-7408, gandlcontractingmaine.com
Lynch Landscaping, Skowhegan, 474-2420, lynchlandscaping.com

MASONRY

Alan Berube, Sidney, 213-8815

MASSAGE THERAPIST

Jeannie G., 120 Drummond Avenue, Suite 1, Waterville, 509-1251

MOVIE THEATERS

Railroad Square Cinema, call for titles and times, 17 Railroad Square, Waterville, 873-6526,
www.railroadsquarecinema.com

MUSEUMS

Colby College Museum of Art, 5600 Mayflower Hill, Waterville, 859-5600, www.colby.edu/museum/

MUSIC/CONCERTS

Snow Pond Center For The Arts and New England Music Camp, 8 Goldenrod Lane, Sidney, 844-476-6976, www.snowpond.org

ORCHARDS

Lakeside Orchards and Farm Market, 318 Readfield Road, Route 17, Manchester, 622-2479

PHYSICAL THERAPY

Dockside Physical Therapy, 47 Main Street, Belgrade

Lakes, 495-3195, 512-2544, Fax 512-2545

PIANO ENJOYMENT

Diane Gorman, 906 Manchester Road, Belgrade, 495-3222

PLUMBING

Paul Hanna's Plumbing, Belgrade, 495-3805

REAL ESTATE DEVELOPMENTS

North Bay Estates, Belgrade, 649-3749, crgsnbe@yahoo.com

REAL ESTATE

Better Homes and Gardens, The Masiello Group, 207-215-7349, Les@LesPriest.com
Coldwell Banker Rizzo Mattson, 219 Capitol Street, Augusta, 622-9000, www.rizzomattson.com
Day's Real Estate, 262 Augusta Road, Route 27, Belgrade Lakes, 495-3111, 1-888-495-3111, www.daysrealestate.com
Lakepoint Real Estate, 221 Main Street, Belgrade Lakes, 495-3700, www.belgradelakepoint.com
Sprague & Curtis Real Estate, 75 Western Avenue, Augusta, 623-1123, www.spragueandcurtis.com

LODGING RESERVATIONS

See page 14

RESTAURANTS

See Dining Directory on page 15

RETIREMENT COMMUNITIES

Granite Hill Estates, 60 Balsam Drive, Hallowell, 626-7786, 1-888-321-1119, www.granitehillestates.com

SAILING

Crooked Island Sailing, lessons, rentals, deliveries, Peter McManus, Belgrade Lakes, 495-9066,

SCHOOLS

St. Michael School, grades pre-K 3-year-old through 8th, 56 Sewell Street, Augusta, 623-3491, www.smsmaine.org
Snow Pond Arts Academy, 8 Goldenrod Lane, Sidney, 844-476-6976, www.snowpond.org

SECURITY SYSTEMS

Cayer Security Services, Inc, 208 College Avenue, Waterville, 453-9177, www.cayersecurity.com

SELF STORAGE

Maple Leaf Self Storage, 688 Manchester Road., Route 135, Belgrade, 495-2191

SURVEYING

Acme Land Surveying, 108 Fairbanks Road, Suite 5, Farmington, 778-4081, www.acmelandsurveying.com

WINDOWS

Hammond Lumber Company. Auburn, Bangor, Belgrade, Boothbay, Brunswick, Damariscotta, Fairfield, Farmington, Greenville, Pemaquid, Portland, Skowhegan, Wilton, 1-866-HAMMOND, www.hammondlumber.com

ASSOCIATIONS/GROUPS

THE BELGRADES...

- East Pond Association, Smithfield/Oakland, www.eastpond.org
- North Pond Association, Smithfield/Rome/Mercer, www.northpond.net
- McGrath Pond/Salmon Lake Association (MPSL), Belgrade/Oakland, P.O. Box 576, Oakland, 04963, 873-5285, www.mcgrathpond-salmonlake.org
- Belgrade Lakes Association (BLA) for Great Pond and Long Pond, Belgrade/Rome/Mount Vernon, PO Box 551, 137 Main Street, Belgrade Lakes, 04918, 512-5150, www.belgradelakesassociation.org
- Friends of Messalonskee, Oakland/Belgrade/Sidney, PO Box 532, Oakland, 04963, 465-4622, www.friendsofmessalonskee.com
- Belgrade Regional Conservation Alliance and BRCA Conservation Corps, PO Box 250, 137 Main Street, Belgrade Lakes, 04918, 495-6039, www.belgradelakes.org
- Belgrade Lakes Region Business Group (BLRBG), PO Box 596, Belgrade Lakes, 04918, 495-3700, www.belgradelakesmaine.com
- Maine Lakes Resource Center/Docks to Doorways, PO Box 431, 137 Main Street, Belgrade Lakes, 04918, 495-3617, 620-6029, www.mainelakesresourcecenter.org

BEYOND...

- Friends of the Cobbossee Watershed, PO Box 5003, Augusta, 04332-5003, 621-4100, www.watershed-friends.com
- Franklin County Soil & Water Conservation District, 107 Park Street, Farmington 04938, 778-4279, www.franklincswcd.org
- Kennebec County Soil & Water Conservation District, 21 Enterprise Drive, Augusta 04330, 622-7847, ext. 3, www.kcswcd.org
- Somerset County Soil & Water Conservation District, 12 High Street, Skowhegan 04976, 474-8324, www.somersetswcd.org
- Kennebec Land Trust (KLT), PO Box 261, 331 Main Street, Winthrop, 04364, 377-2848, www.tkltr.org
- Kennebec Messalonskee Trails, PO Box 2388, Waterville, 04903, 873-6443, www.kmtrails.org
- Kennebec River Rail Trail, PO Box 2195, Augusta, 04338, 623-8162, www.krrrt.org
- 30 Mile River Watershed Association (30 MRWA), Kimball Pond in Vienna to the Androscoggin River, PO Box 132, Mt Vernon, 04352, 685-4956, www.30mileriver.org
- Maine Lakes Society, formerly Congress of Lake Associations, PO Box 447, 137 Main Street, Belgrade Lakes, 04918, 1-855-463-2652
- Central Maine chapter of the New England Mountain Bike Association (CeMeNEMBA), 441-6227, www.cemenemba.org



"Useful Citizen's Tour" Guided Walking Tour of the North Cemetery

Skowhegan History House Museum & Research Center will be hosting a tour of the historic North Cemetery off Madison Avenue on July 29th at 10 AM. During this guided walking tour participants will visit with some notable citizens that proved to be useful in developing country, community, and business. In her two volume history of Skowhegan, Skowhegan on the Kennebec, Louise Helen Coburn selected a few useful citizens that "may be regarded as representative of the human stream, which during the late 18th century and early 19th flowed eastward and northward to come to rest beside the Kennebec near Skowhegan Falls, and here to pause for a generation before flowing outward to the ends of the known world." Many of these notable souls rest in the North Cemetery.

This tour visits many prominent citizens of early Skowhegan including Amos Mann and Asa Dyer. Dr. Amos Angier Mann practiced medicine in Skowhegan for many years preceding 1882. He evidently didn't go to school until he was 15, attended Lancaster (NH) for one term and served as assistant teacher in that institute. Being an unusual doctor, he was sometimes summoned as a last resort because he did things that no other practitioner would dare attempt. In some cases of indigestion he would prescribe "plenty of pork and beans and stuff the potatoes right to her." Dr.



Mann was interested in politics and did not hesitate to share his opinion in his newspaper entitled "Mann's Family Physician and Down East Screamer." His home was located on the corner of the Dr. Mann and the Athens' road.

Many of the homes and businesses in Skowhegan are constructed of brick. Most of those bricks were manufactured by two firms in Skowhegan, one being owned by Asa Dyer. Louise Coburn notes that Asa was the first settler on his considerable farm of 85 acres which ran eastward across the plains on what was considered upper Madison Street known as Dyer Hill. Mr. Dyer ran a brick-yard just behind his home and the business was later carried on by his sons, Chandler and Isaac. Isaac Dyer, notable Civil War General, is also at rest in the North Cemetery along with his servant slave Morgan Ellis.

Skowhegan History House Museum & Research Center strives to bring local history alive through guided tours and research assistance at the museum, history related presentations, and by hosting tours featuring historic Skowhegan. After the Useful Citizens Tour, there is one remaining tour scheduled for this season and it is new. Early Bloomfield Settlers, Tour of the Bloomfield Cemetery on August 12th at 10 AM.

Participants will meet tour guide Melvin Burnham at the cemetery gate and a donation of \$5.00 per person is suggested. For more information: info@skowheganhistoryhouse.org



This Week's LakeSmart Tip WATER BARS



Before water bar



After water bar

Water bars slow concentrated storm water traveling down moderately steep paths, trails, and other sloping areas to slow and divert water off into vegetated areas and woods. Multiple water bars made of wood placed closer together are recommended for steeper areas. Rot-resistant woods such as cedar, spruce, fir, or hemlock work well.

For a free labor contact:

Nathan Durant, Youth Conservation Corps Director,
brcacc@mainelakes.org
Logan Parker, LAKESMART Coordinator,
lparker.mainelakes@gmail.com
Maine Lakes Resource Center 207-495-3617

Sprague & Curtis
Real Estate

spragueandcurtis.com

6 2 3 . 1 1 2 3

75 Western Ave. • Augusta, ME



AUGUSTA — Cod style home in popular Mayfair neighborhood. Home offers a kitchen, spacious LR, up to 4 BR. Most rooms have hardwood floors. Modern oil furnace. Shed for storage, paved drive. Nice curb appeal and wonderful area. Lovely yard with lots of perennial plants. Update the interior to call this your own! **MLS 1273920 \$115,900**



PITTSFORD — Cape style home w/beautiful land-29+/- acres of fields/woods to call your own. Lots of road frontage. Antique Cape w/1BR apartment, space that could easily be incorporated into the main living area. Restore & update to your liking. New furnace being installed. Absolutely beautiful land- this much acreage is hard to find so close to Augusta! Also ideal as a farm or if you want animals. **MLS 1274529 \$259,000**



MANCHESTER LAND-RARE OPPORTUNITY! — 45 acres on prestigious Pond Road. 300 ft on Cobbosseecontee Stream. 917 ft of road frontage. Close to Country Club in an area of fine homes! Close to Augusta, Winthrop & Lewiston. **SPECIAL. MLS#1204090 \$130,000**



SIDNEY — Large Sidney Ranch, great curb appeal & a 1 acre corner lot. Updated 1976-3BR, 1BA Very pleasant & bright kitchen that flows to open DR & LR. Lg deck to enjoy the lovely grounds. New laminate wood floors, tile bath & kitchen. Updates include newer oil boiler, paved drive, vinyl siding & windows, new roof, extra attic insulation. Lower level can be finished for FR. 3 mi to medical center. **MLS 1274087 \$167,500**



WHITEFIELD — Complete renovation/restoration in 2004. Beautiful 4BR Antique Farmhouse w/30 acres of land. All rebuilt, new kitchen w/granite, 3 new baths, 3 new fireplaces, wiring, insulation, windows, roof, etc. HW flrs, lots of charm. Lovely rural setting. **MLS1098694 \$249,900**



SIDNEY — Spacious, like new, 3-4BR, 3 BA, 2,800 SF home in rural, private setting just minutes from I-95, the new Hospital, and the MarketPlace. Expanded, totally renovated in 2011. Lg open interior. Oak kitchen/DR w/stone fireplace. Beautiful floors. Fabulous front screened porch with vaulted ceiling. Extra spacious Master suite w/modern bath/jetted tub. Lower level rec room. Oversized heated 2 car gar. Easy to heat. More! **MLS 1238746 \$244,900**



AUGUSTA — Affordable Waterfront living, private setting with 420' on Togus Pond. Screened room by the water, level waterfront w/dock. 2 BR Ranch w/attach. garage. Master BR w/vaulted ceiling & balcony overlooking water. Large LR w/hardwood floors, lots of windows. 1 ac of land. New boiler, newer roof & septic system. About 10 min to town for I-95 & all amenities. **MLS 1274394 \$169,900**



AUGUSTA — One of Augusta's most exceptional homes. Over 8,000 sf, 4 bedrooms, 4.5 BA, 7 ac of park like grounds. Quality built, brick exterior, 7 car garage, central air. Expansive kitchen, high end appliances. Grand cathedral foyer, sunken LR w/2 story cathedral ceiling & stone fireplace, master suite w/den, spa bath, huge daylight FR w/fireplace, private swim spa, more! Extras galore! **MLS 1231871 \$399,000**



SIDNEY — Spacious 2,200 SF 4+BR house with potential 2 car garage (now converted to utility room) on a nice 0.9 acre lot. Nice layout, spacious kitchen, LR w/fireplace, 2-3BR's down, 2 up. Full basement. Possible business use, convenient to I-95, new Regional Hospital. **MLS 1248090 \$149,900**



Business

One Million Hours and Still Counting National Safety Council recognizes Hammond Lumber

Between May 2012 and November 2015, the Employees of Hammond Lumber Company's Belgrade store worked more than one million consecutive hours without a job-related injury or illness that resulted in lost time. The National Safety Council (NSC) has recognized that accomplishment with its Million Work Hours Award.

And, according to Hammond Safety Director Bruce Pelletier, the streak is still going.

"We've now gone beyond 1,189,500 hours at the Belgrade facility," says Pelletier, "and the strong commitment to keep it going starts with the Hammond family's emphasis on keeping all of us safe. They really care about the people who work here and want to make sure that when we go home we're not missing out on playing with kids because of an injury."

Clifton "Skip" Hammond started the company as a three-man sawmill in 1953. Skip's focus on safety was shared by his wife, Verna, and it extended to their son Donald, grandson Michael, and granddaughter Sarah Krizo as Hammond Lumber grew into one of Maine's largest independent building suppliers. There are now 13 Hammond Lumber locations and 450 employees. Donald, who started the first



retail store next to the sawmill in 1967, is Hammond Lumber's president while Mike is vice-president and Sarah is employed with the company as well. Skip and Verna are retired but still involved.

"They're a family that understands what it's like for the families of the people who work for them," says Pelletier, who is responsible for overseeing safety for all Hammond locations. "They have an intense feeling for their employees that goes beyond business."

On the wall of Pelletier's office are 45 certificates and plaques given to the company over the years from not only the NSC, but also from the Northeastern Lumber Manufacturers Association (NeLMA), Maine Employers

Mutual Insurance Company (MEMIC) and various organizations within the building trades. One of the certificates is a previous Million Work Hours Award for a Belgrade streak extending from February 2005 to April 2008.

None of the other Hammond stores have as many employees as does Belgrade, so it takes more time to build up combined accident-free hours. However, they may have safety streaks that run even longer when measured in years.

"The Farmington and Skowhegan facilities," Pelletier points out, "are half to three-quarters of the way to a million hours, yet they have only 19 employees each. They haven't had a lost-time accident in more than fifteen years."

Pelletier was hired by Hammond Lumber in 2005 as the company's first full-time safety director, and it is his sole focus. In addition to staying on top of government regulations and performing frequent inspections of all areas of all Hammond locations, he conducts safety orientations and ongoing training for the entire Hammond staff.

More information about Hammond Lumber Company's safety programs, as well as its products and services, is available at 1-866-HAMMOND and www.hammondlumber.com.

Support at any point in your life

- Skilled nursing, personal care support and companionship services available.
- We can provide assistance with housekeeping, errands, and hygiene.
- Post-operative, short term, respite, and long term care available.
- As little as one hour a week up to twenty four hours a day.

Contact Jillian Jolicoeur, RN-BSN today
for your free in home assessment!



1-800-781-0070 ext. 408 • www.assistanceplus.com



SNOW POND
CENTER FOR THE ARTS
2016 SUMMER MUSIC SERIES



LITTLE WOMEN
the Broadway musical

Presented by
NEMC Musical Theater
August 4 and 5, 7:30 pm,
Alumni Hall
TICKETED EVENT

LITTLE WOMEN is presented through special arrangement with Music Theatre International (MTI). All authorized performance materials are also supplied by MTI. www.MTIshows.com

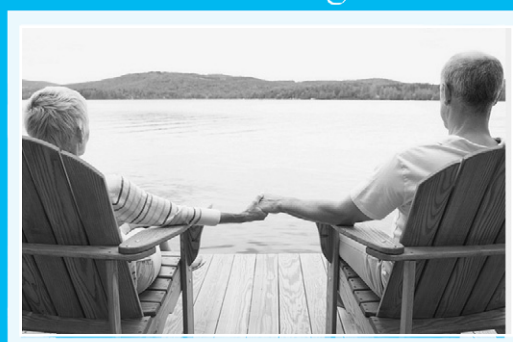


Tickets and information
available at www.snowpond.org
8 Goldenrod Lane, Sidney, Maine 04330 844-476-6976



"The Golden Age is before us, not behind us"
...William Shakespeare

Whether you are 55 or 85 our mission is the same...
grow and protect your family's treasure for your
'Golden Age'



129 Silver St, Waterville, ME
Phone: (207) 873-2200
www.goldenpondwealth.com

Securities offered through LPL Financial, Member FINRA/SIPC



Your own little island of

FUN

**LARGEST
SHOREMASTER
DISTRIBUTOR
in the
COUNTRY**

Improve your lake shore living experience with a **SHOREMASTER SWIM RAFT**. Kids and adults alike will enjoy years of fun and treasured memories.

We Cover The Waterfront.

SHOREMASTER

SWIM RAFTS

90" x 114" Poly Swim Raft – Poly Deck - Yellow or Gray	\$1,129
8'x8' Aluminum Swim Raft Cedar Deck	\$1,589
8'x8' Aluminum Swim Raft Aluminum Deck	\$2,029
8'x8' Aluminum Swim Raft White Aluminum	\$2,099
Rip Raft – Tan or Orange	\$849

Ladder sold separately

3 step pivot ladder	\$269
4 step pivot ladder	\$329
5 step pivot ladder	\$369
Nylon Rope Ladder (Rip Raft only)	\$57
2 step Rip Raft Ladder	\$215

Toll-free 1-866-HAMMOND

Hammond Lumber Company

Visit us online at www.hammond-shoremaster.com for a 82-page Product Planning Guide & Price List.

AUBURN • BANGOR • BELGRADE • BOOTHBAY HARBOR • BRUNSWICK • DAMARISCOTTA
FAIRFIELD • FARMINGTON • GREENVILLE • PEMAQUID • PORTLAND • SKOWHEGAN • WILTON

Lakepoint

REAL ESTATE

207.495.3700

221 Main St.,
Belgrade Lakes, ME 04918

www.belgradelakepoint.com



NEW LISTING

MESSALONSKEE LAKE, OAKLAND: 12 room year round Contemporary on 100' lakefront. 4BR, 3BA, Master Suite with porch overlooking the lake. #1270669 **\$549,900**



CHESTERVILLE: Breathtaking mountain views. Stain glass windows, marble floor, Count Rumford Fireplace. All on 8.5 private acres. #1265643 **\$299,900**



ROME: Former school house, transformed into efficient open living on 4+ acres. 1BR/1BA, living/dining area. Affordable, in charming area. #1250599 **\$68,900**



GREAT POND, BELGRADE: 3BR/2.5BA main home. 2BR/1BA guest quarters above 2 car heated garage. Pvt sandy frontage, on 4.11 acres. #1141526 **\$895,000**



NEW SHARON: 100 Acres. Near to Kennebec Highlands. Very private wooded lot. Power installed, soil test available. #1259273 **\$129,000**



NORTH POND, SMITHFIELD: Charming Cottage steps from water's edge. Remodeled with wood floors and walls. Expansive views. #1258180 **\$154,000**



VIENNA: Seasonal Cottage on 1.75 acres. 2BR, 1 BA, woodstove in living room, deck. 1 mile from Parker Pond Public Boat Landing. #1268081 **\$62,500**



FAYETTE: Surveyed 2.1 acre lot of beautiful field/pasture. Enjoy wonderful views from your new home. Quiet location. #1255117 **\$37,500**



BELGRADE: 3BR/1BA, attached 2 car garage, great location and value. Incl 2BR rental unit built on trailer frame. Great rental history. #1247059 **\$109,900**

GRANITE HILL ESTATES

MARTHA BALLARD
ASSISTED LIVING

Part of:
MaineGeneral Health

Retire your way. Today!

In a community that cares.

Now's the time to join the family at **Granite Hill Estates**, central Maine's premiere continuing care retirement community and part of **MaineGeneral Health**. Call 207-626-7786 or toll free 1-888-321-1119 today to schedule a tour. Offering an impressive menu of amenities:

- Spacious cottage homes and apartments
- Elegant full-service dining plan
- Maintenance and housekeeping services
- Scheduled courtesy transportation
- Social, cultural and educational programs
- Indoor pool complete with hot tub
- Cozy reading room, library and bank
- Attractive game, billiard, and meeting rooms
- Fitness center with an on-site fitness coordinator
- Convenient hair salon, massage spa and meditation room
- Wooded walking trails throughout our 135 acre campus

Awarded
Highest Honors
for
Resident
Satisfaction

Holleran National
Senior Living Survey



email: info@granitehillestates.com

60 Balsam Drive, Hallowell, ME 04347

207-626-7786

1-888-321-1119

granitehillestates.com



in a GREAT PLACE



For 146 years we have helped make Kennebec County a great place to work, live and play.



Kennebec Savings Bank

Where banking is easy.

Augusta | Waterville | Farmingdale | Winthrop

www.kennebecsavings.com

