

1930

Maine Fishing, 1930

Maine Development Commission

Follow this and additional works at: http://digitalmaine.com/tourism_books

Recommended Citation

Maine Development Commission, "Maine Fishing, 1930" (1930). *Maine Tourism Books*. 5.
http://digitalmaine.com/tourism_books/5

This Text is brought to you for free and open access by the Economic and Community Development at Digital Maine. It has been accepted for inclusion in Maine Tourism Books by an authorized administrator of Digital Maine. For more information, please contact statedocs@maine.gov.

D60-2:
Fi 532/930

Copy 1

Maine



Fishing



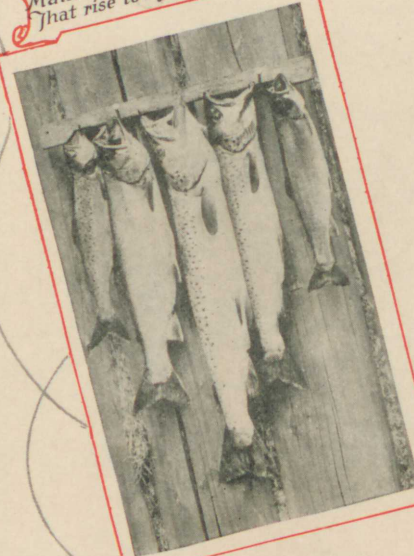
Maine's first sea salmon
Goes to the White
House

Fishermen's Luck.
One happy sportsman
and three jealous ones



Looks like good
Fishing Weather

Maine Trout and Salmon
That rise to Fly and Lure



At the edge of the
white water where the
big ones lurk

When a Maine black bass
strikes - you know it.



Guess I'll try 'em to-day



With waders and short-
net along the riffles or
deepest pool

Ice fishing - lunch
beside a roaring fire
- what fun!



Many a Salmon
and Trout hide
along the log booms

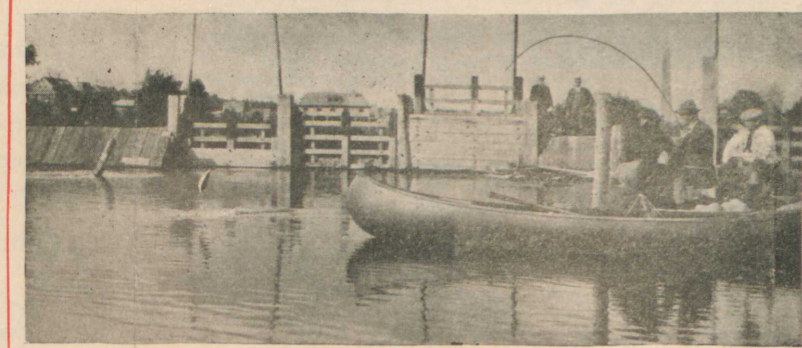
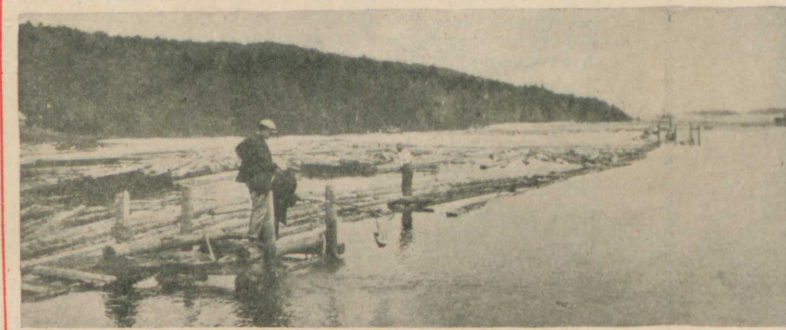


Moosehead Lake
Home of salmon, squawtail and togue

Queen of the Waters



When a
Salmon jumps
So does the
blood pressure



THE SEBAGO, LONG LAKE AND OXFORD COUNTY REGION

The Sebago Lake Region embraces all of the southern part of the State with Sebago Lake as its hub. This is the oldest and best known fishing section of the State. It has been famous for generations. It includes meadow, streams and mountain brooks where trout fishing is excellent together with large streams and ponds where bass, pickerel and perch are found in abundance.

The famous Sebago salmon are a species of game fish originally native to this lake. Far plunging, lively, powerful, they afford the finest sport early in the spring just after the ice goes out, as they are close to shore and rush at smelt and spinner (the season opens in the spring as soon as the ice goes out). Later in the season, as insects hatch, they offer opportunity for fly fishing and still later may be taken in the deep cold water, where again smelts and spinners are effective.

North from Sebago and almost equally good for angling, especially for black bass, is Long Lake in the towns of Bridgeton and Harrison with trout and salmon to test the anglers' mettle. About Long Lake are many streams and ponds, easily accessible, where fish are plentiful and boats are available. At Waterford there is splendid bass fishing in Lake Keoka, while Highland Lake, in Bridgeton, offers ideal bass fishing. Brownfield offers excellent trout fishing and Lake Kezar, in the town of Lovell, is well stocked with salmon and small mouthed bass, pickerel and the like. This is one of the largest bodies of water in this section north of Sebago and Long Lake, being nine miles long.

A description of the fishing waters of this section cannot be complete without mention of beautiful Lake Thompson in Oxford, long famed as premier fishing waters, and of Lake Pennessewassee nestled amongst the Norway hills where some of the best bass fishing may be found in that part of the State.

These are only a few of the lakes and ponds of this section, the angler will find many smaller ponds and innumerable streams where he can have the sort of fishing for which he is looking. In fact, many of these lesser known streams and ponds may offer just the spot for the purchase or erection of a summer camp so that one may own a little bit of Maine.

RANGELEY LAKES AND DEAD RIVER REGION

There are probably no large sport fishing lakes in America that are as well known as the Rangeleys. These lakes, with their long, tongue-twisting Indian names, first won fame for the size and fighting qualities of their trout, which are taken at all weights up to ten pounds. Some thirty or forty years ago, salmon were introduced here so that today their numbers have increased to the point where there are more of them taken than trout. One can get in the Rangeley Lakes Region just the sort of a fishing vacation that is desired, by staying at the finest hotel, the sporting camp or on "your own" with guide, tent and outdoor cooking material—this can even be varied by staying at the hotel of your choice and taking overnight camping trips to distant waters.

West of the Rangeley Lakes, and extending to the New Hampshire border and south to the Androscoggin River, is an area traversed by streams which has been noted for years amongst anglers. The Magalloway River and the huge lake known as Sawyer Lake, made by damming the river years ago, offers today some wonderful trout fishing and an opportunity of getting "way back" into the woods by motor boat, without the usual trials of canoe and portage.

Four well known streams in the southern section are the Cambridge River in Grafton, Bear River and Sunday River in Newry, and the Ellis River in Andover. Lake Anasagunticook in Canton offers splendid bass and perch fishing.

The Dead River Region, the country where Arnold trod, offers a tremendous variety of lake and stream fishing. This country is a perfect network of small lakes from one mile to four or five miles long where fly fishing is practiced exclusively. As all of these lakes are at high level, from 1800 feet up, the water remains cold throughout the season and practically every day during open season good catches of fish can be made. Tim pond and Round Mountain pond are good examples of this where sometime during the day trout can be caught on the fly every day throughout the open season.

This whole Rangeley and Dead River Region has many camps and hotels, as well as farm houses, where the fishermen may find the sort of accommodations to suit, and the sort of fishing that he most desires.

BELGRADE LAKES REGION

The Belgrade Lakes Region, a glance at the map will show its location, has long been famous amongst anglers who consider the small mouthed black bass, the supreme fighter of all fish. The angler who demands action, who already appreciates or wants a demonstration of the fighting qualities of black bass, should fish these Belgrade waters. In recent years, due to careful stocking with trout and salmon, this form of fishing has come into great favor and now, from the time the ice goes out in the spring until well into the summer, anglers can find here a sport to meet their requirements.

In the Belgrade Chain proper is found six lakes, North Pond, East Pond, Great Pond, Long Pond, Salmon Lake and Messalonskee. Other lakes that may be really considered a part of this chain are Cobboscontee, in the towns of Manchester and Monmouth; the twin lakes of Winthrop, Maranacook and Annabessacook; Androscoggin Lake in Wayne and the long chain of smaller lakes north from it in Readfield, Fayette and Mt. Vernon. West of the Kennebec, but still a part of this region, lies a series of good fishing waters to within a few miles of the coast. Some of these ponds, well known to the angler, are Webber Pond, Three Mile Pond, China Lake, Palermo Pond, Damariscotta Lake and St. Georges Pond, where salmon, trout, bass, white perch and pickerel are found in abundance.

In many of the lakes of the state, just after the ice has gone out, there is a run of fresh water smelts from the lake up into the tributary streams to the spawning beds. As this run occurs early in the fishing season, there are few non-resident fishermen who have had the fortune to participate in a real old fashioned smelting party. The smelts are taken at night with a big dip net and spot light. These fish are dressed, dipped in egg, rolled in bread crumbs and fried in deep fat. The result is one of the finest fish dishes imaginable and those who have never eaten them should see that their next Maine fishing trip is taken sufficiently early so that Maine fresh water smelts appear on their bill of fare.

Every lake in this locality has its fine hotel, its sporting camp and its farm house where the sportsman can find just the environment which he desires. This region, as well as all other Maine fishing regions, is well served by the railroads of the state.

MOOSEHEAD LAKE REGION

The Moosehead Lake Region is largely a primeval wilderness of lakes, streams and mighty forests. Here spring comes a little later than in southern and western Maine. Square-tailed trout, togue and landlocked salmon provide the thrills that start the heart of any angler to thumping.

Moosehead Lake, the largest body of fresh water within the confines of any state, is regarded by those who know it as the queen of Maine's waters and is visited yearly by hundreds of anglers who get their full share of the big fish which cruise its cold, clear depths. Its open season is from May first to September thirtieth and during that time a great variety of fish can be taken by fly and bait.

Moose River, the largest tributary to Moosehead Lake, empties its waters about half-way up the lake. This river, fed by literally hundreds of small streams and ponds, drains a vast territory extending westward to the Canadian border. It connects Moosehead with Brassua Lake, Long Pond, Wood Pond, Atean Pond, Holeb and Misery Ponds, all well known for their fine fishing.

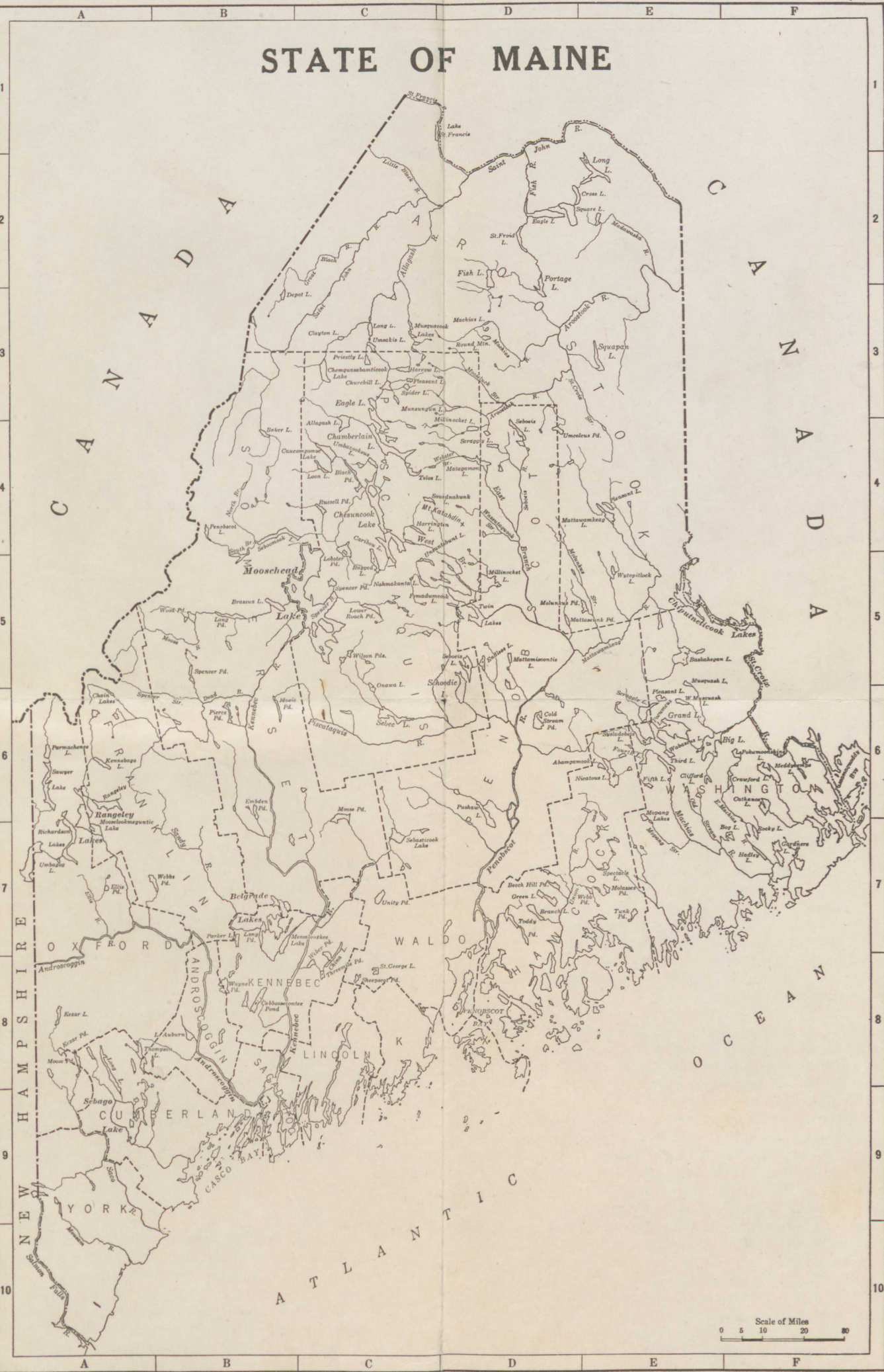
MAINE FISHING REGIONS

Maine with its five thousand lakes and streams can be divided into seven great fishing districts if it be understood that each one of these districts can in turn, be divided into many subdivisions.

For the first we have the Sebago, Long Lake and Oxford County region, in southwestern Maine; for the second the Rangeley Lakes and Dead River region in west central Maine; for the third, the Belgrade Lake region in central Maine; next the Moosehead region of north central Maine, then the Allagash region of northwestern Maine, extending to the Canadian border; sixth, the Fish River region with its chain of lakes in northeastern Maine and lastly the Grand Lakes and Schoodic Grand Lakes region of eastern Maine.

A glance at the map just below will show clearly these regions and will also show the tremendous amount of water in the State. Much of the northern, central and eastern part of Maine is an angler's paradise with vast areas of this that may be considered almost virgin country.

There follows briefly a short description of each of these regions. These descriptions are purposely short as to write of them fully would call for a large volume instead of a small pamphlet.



I N D E X											
		Cross Lake	E-2	Little Black River	C-2	Moxie Pond	B-6	Round Mountain L.	D-3	Telos Lake	C-4
				Lobster Pond	C-5	Munsungun Lake	C-3	Russell Pond	C-4	Third Lake	E-6
Abamgamook Lake	E-6	Dead River	B-6	Long Lake	A-8	Musquacook Lakes	C-3			Thompson Lake	A-8
Allagash Lake	C-4	Depot Lake	B-3	Long Lake	E-2	Musquash Lake	E-5	Saco River	A-9	Threemile Pond	C-8
Allagash River	C-2			Long Lake	C-3			St. Croix River	F-5	Toddy Pond	D-1
Androscoggin River	B-8	Eagle Lake	C-3	Long Pond	B-7	Nahmakanta Lake	C-5	St. Croix Stream	D-3	Tunk Pond	D-7
Aroostook River	D-3	Eagle Lake	C-3	Long Pond	B-5	Nicatus Lake	B-6	St. Francis Lake	D-1	Twin Lakes	A-5
		E. Branch Penobscot R.	D-5	Loon Lake	C-4	N. Br. Penobscot R.	E-4	St. Francis River	C-1		
Baker Lake	B-4	E. Machias River	A-7	Lower Roach Pond	C-5			St. Froid Lake	D-2	Umhagog Lake	A-6
Baskahagan Lake	E-5	Ellis Pond	F-6			Old Stream	E-6	St. George Lake	C-8	Unashookus Lake	E-4
Beech Hill Pond	D-7	Ellis River	A-7	Machias Lake	D-3	Onawa Lake	C-5	St. John River	C-2	Unleucos Pond	C-4
Belgrade Lakes	B-7	Emden Pond	B-6	Machias River	E-7			Salmon Falls River	A-10	Unsakis Lake	C-3
Big Lake	E-6	Endless Lake	D-5	Madawaska River	E-2	Parker Lake	B-7	Sandy River	B-7	Union River	D-8
Black Pond	C-4			Matagamon Lake	D-4	Parmachenee Lake	A-6	Sawyer Lake	A-6	Unity Pond	C-7
Bog Lake	F-7	Fifth Lake	E-6	Mattamincotis Lake	D-5	Pasamunquoddy Bay	F-6	Schoodic Lake	D-5	Unashantub Lake	D-4
Branch Lake	D-7	Fish Lake	D-2	Mattausunk Pond	E-4	Pemaduncook Lake	C-5	Scraggly Lake	E-6		
Brassua Lake	B-5	Fish River	D-2	Mattawamkeag Lake	E-5	Penabscot Bay	D-8	Scraggly Lake	D-6	Wabassus Lake	E-6
		Fourth Lake	E-6	Mattawamkeag River	E-5	Penobscot Lake	B-4	Sebago Lake	A-9	Wasstataquoik Stream	D-4
Carillon Lake	C-4			Meddybemps Lake	F-6	Penobscot River	B-7	Sebasticook Lake	C-7	Wayne Pond	B-8
Casco Bay	B-9	Gardners Lake	F-7	Messonslake Lake	B-7	Pierce Pond	B-6	Sebec Lake	C-6	Webb Pond	E-7
Cathance Lake	F-6	Grand Lake	E-6	Millinocket Lake	E-7	Piscataquis River	D-4	Schoeis Lake	D-5	Webbs Pond	B-7
Caucomgomoc Lake	C-4	Great Black River	C-2	Moosehead Lake	D-3	Pleasant Lake	E-6	Schoeis River	D-4	Weber Pond	C-8
Chain Lakes	A-6	'Green Lake	D-7	Moosekun Pond	E-5	Pleasant Lake	E-4	Schoomook Lake	C-4	W. Br. Penobscot R.	E-6
Chamberlain Lake	A-6			Molunkus Stream	E-5	Pocumcus Lake	E-6	Sheepscot Pond	B-8	W. Musquash Lake	C-6
Chemquassabamticook L.	C-3	Hadley Lake	F-7	Moosehead Lake	B-5	Pokamoonshine Lake	F-6	Spectacle Lake	E-7	Wilson Ponds	C-5
Chesuncook Lake	C-3	Harrington Lake	C-4	Moosehead Stream	D-3	Portage Lake	D-2	Spencer Stream	A-6	Wood Pond	B-6
China Lake	C-8	Harrow Lake	C-3	Mooselookmeguntic L.	A-7	Priestley Lake	C-3	Spencer Pond	B-5	Wytopitlock Lake	E-5
Chiputiticook Lakes	E-5			Moose Pond	A-8	Pushaw Lake	D-6	Spencer Bay	C-5		
Churchill Lake	C-3	Kennebago Lake	A-6	Moose Pond	C-6			Spider Lake	C-4		
Clayton Lake	C-3	Kennebec River	B-8	Moose River	B-5	Ragged Lake	C-5	S. Br. Penobscot R.	B-3		
Clifford Lake	E-6	Kezar Lake	A-8	Mopang Lakes	E-7	Rangleys Lake	A-6	Squapan Lake	E-3		
Cobboscontee Pond	B-8	Kezar Pond	A-8	Mopang Stream	E-7	Rangleys Lakes	A-6	Square Lake	E-2		
Cold Stream Pond	D-6			Mount Katahdin	A-7			Syladobets Lake	E-6		
Crawford Lake	F-6	Lake Auburn	B-8	Mousam River	A-10	Rocky Lake	F-7				

BAITS, FLIES, and LURES
for Maine Waters

Salmon For early fishing as soon as the ice leaves and for the following week or two	Smelt on Single Hooks Archer Spinners with smelt Cupsuptic Baits with smelt Phantoms Rangeley Spinners with smelt Nature Baits
Salmon Flies These flies have a long shank hook and a bunch of worms is used with the fly They are fished as wet flies; no bait, when fly fishing only is permitted	Maine Lake Trolling Flies Parmachenee Belle Silver Doctor Durham Ranger Jock Scott Dusty Miller Thunder & Lightning Mitchell
Salmon Baits For later fishing	Cupsuptic Baits with worms Rangeley Spinners with worms Other similar bait which law permits
Trout Baits For early fishing Trout will take worms more readily than salmon	Smelt on Single Hook Archer Spinner Cupsuptic Baits with worms Phantoms Rangeley Spinner with worms
Maine Lake Trolling Flies for Salmon and Trout Most common patterns	Bucktail Black Gnat Brown Hackle* Coachman Dusty Miller Gray Hackle* Grizzly King Hares Ear Ibis Jessabo Jock Scott Jungle Cock King of Waters Lester Montreal* Also some patterns of Dry Flies
Stream Fishing	Flies as per above list, also best patterns of Dry Flies
Trout	Small Gold Spinners with worms Tacoma Baits Pearl Spoons with worms Emeric Spinners Denver Spinners
Bass	Lake Trolling Willow Leaf Fluted Baits Gold Bowl
Any of the common trolling Spoons	Black Bass Pork Rind Baits Wildier Dilo Lures
Bass Flies	Black Gnat Brown Hackle Coachman Col. Fuller Grizzly King Ibis Lord Baltimore
Bass	Bait Casting with Live Bait Such as shiners, helgramites, frogs, lizards, etc., and with artificial baits
Pickereel	Almost any legal spinner or bait with red in it will attract the voracious pickereel Baits should have short wire leader
White Perch	Any of the smaller spinners such as: Roman Spinners Denver Spinners Tacoma Baits

The above baits and flies are standard for any of Maine's inland waters. In each locality however there is some special bait which is thought to be better than any other. Information regarding them may best be obtained of local guides, camp or hotel proprietors, and sporting goods dealers.
*See Colored Flies Around Pictures.

Fishing Licenses

According to law, a non-resident is required to take out an annual fishing license. This license costs \$3.15 for the privilege of fishing one month and \$5.15 for the privilege of fishing the entire season—(this includes the right to fish through the ice). These licenses are on sale at most of the camps and hotels, at many sporting goods stores, by game wardens, town clerks and other officials. They can be sent by mail from the Department of Inland Fisheries and Game, State House, Augusta, Maine, on receipt of price and the following information:

Age Height Weight Complexion
Color Hair Color Eyes and Nationality
and must be signed by the licensee before it is effective.

Non-residents cannot build camp fires while on a fishing trip in unorganized townships, except within the limits of public campsites maintained by the Maine Forest Service, unless they are in charge of a registered guide. The unorganized Townships, or so-called wild land territory, is broadly speaking, that section of the State of Maine, north of a line drawn from Bethel on the west to Mattawamkeag and Houlton on the east, with the exception of Penobscot County, in the vicinity of Patten; Aroostook County in the vicinity of Houlton; northern and eastern Aroostook County along the New Brunswick border; Piscataquis County in the vicinity of Dover-Foxcroft and Greenville. The greater part of Washington County is unorganized territory with the exception of the coast towns and those along the St. Croix River.

Inland fishing laws on lakes and ponds: on salmon, land-locked salmon, trout and togue—from the time the ice goes out in the spring, to September 30th, inclusive; on rivers—from the time the ice goes out in the spring to September 15th, inclusive; and in streams and brooks—from the time the ice is out until August 15th, inclusive. Bass and white perch—from June 21st to September 30th, both dates inclusive, and bass on fly, June 1st to June 20th.

There are many special laws governing fishing in the State and methods of fishing so that those interested in a particular section should procure from the Department of Inland Fisheries and Game a copy of the fishing laws.

For further information on Maine fishing or for a free copy of any of the publications listed below, write:

MAINE DEVELOPMENT COMMISSION
State House, Augusta, Maine

- Eastward Ho to Maine
- Maine by Motor (with Highway Map)
- Maine Camping and Canoeing
- Maine Highway Map
- Maine Agriculture
- Maine Hardwoods
- Maine Hunting (ready for distribution July 15, 1930)
- Patriotic Plantations, Towns and Cities

While fishing on any of the lakes, ponds, streams or brooks in Maine, you are on privately owned lands. Please do your part by PREVENTING FOREST FIRES.

I. WALTON, M. D.

OPPOSITE P. O.

ANYWHERE, U. S. A.

For Mr. Heathman
Address Augusta, U. S. A. Date March 28, 1929
Two weeks fishing trip in Maine
All necessary fishing equipment
Take daily for two weeks as soon as the ice goes out of my good fishing lake in Maine.
Repeat throughout the fishing season as necessary
I. Walton M. D.
Augusta, U. S. A. ADDRESS

You had been having an argument with one of your fishing friends as to whether or not the Silver Doctor trout fly had any red and yellow in it and you had gotten out your tackle box to settle the dispute. Right in the top tray you find this prescription. Until you read it you think what a strange place to leave a prescription, but after you have read it, it all comes back to you. You remember that you thought what an unusual prescription this had been. You remember how you woke up one morning the spring before with a dull headache, with smarting eyes, with chills running up and down your back. How the cold shower didn't seem to put the usual pep into you. You went to the Doctor and he gave you this very unusual prescription. You followed it and were cured at once and too soon.

You never will forget the fun you had while on the trip, how you ate, how you slept and how the big ones made your heart thump when they struck. After reading the Doctor's orders of a year ago, you don't feel so well and after you have proved to your friend that there is both red and yellow in a Silver Doctor, you know you should feel better, but in reality you feel worse. You know you have a bad case of that dread disease known as FISHING FEVER. You pace the floor, you read camp and fishing bulletins, you overhaul your fishing equipment, you buy new flies, you eagerly await the call from Maine, "THE ICE IS OUT, COME AND GET THEM." You say to yourself, and anyone else who is foolish enough to ask if you are going, "TRY AND STOP ME." "ME. FOR MAINE."

Copyright
1930
MAINE DEVELOPMENT COMMISSION
Printed in U.S.A. on paper made in Maine.

