

Summertime in the Belgrades



... Serving the Central Maine Lakes & Kennebec River Corridor

— A Cider Mill Press Publication —

VOLUME 18, NUMBER 3

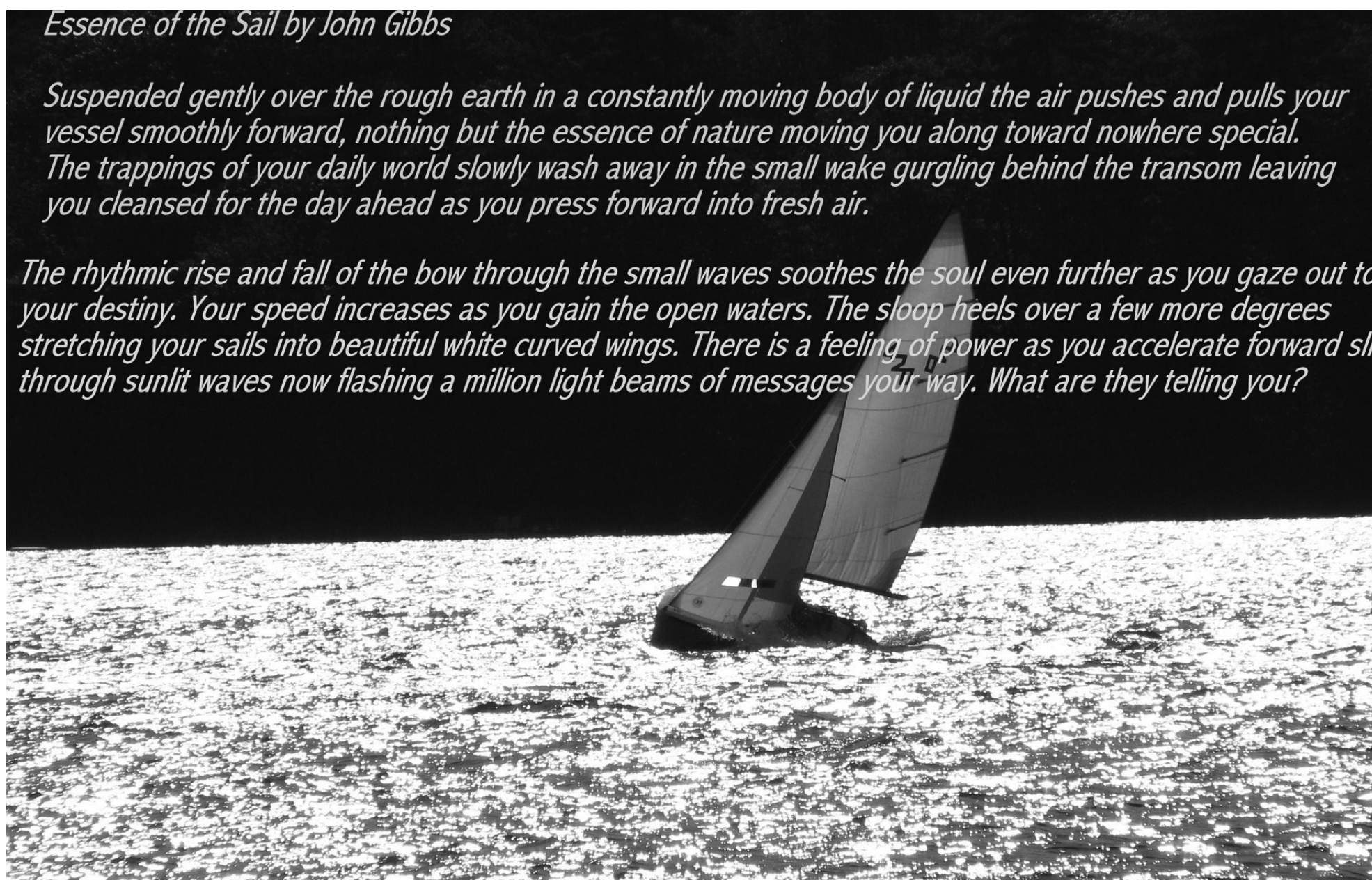
The Quest For Quiet

by Esther J. Perne

Essence of the Sail by John Gibbs

Suspended gently over the rough earth in a constantly moving body of liquid the air pushes and pulls your vessel smoothly forward, nothing but the essence of nature moving you along toward nowhere special. The trappings of your daily world slowly wash away in the small wake gurgling behind the transom leaving you cleansed for the day ahead as you press forward into fresh air.

The rhythmic rise and fall of the bow through the small waves soothes the soul even further as you gaze out to your destiny. Your speed increases as you gain the open waters. The sloop heels over a few more degrees stretching your sails into beautiful white curved wings. There is a feeling of power as you accelerate forward sliding through sunlit waves now flashing a million light beams of messages your way. What are they telling you?



Canoes gliding along the shoreline, bikes coasting down country roads, hikers entering woods and gaining heights that are of

The 420 sloop "Sun Stream" in front of The Mountain on Great Pond, owned by John Gibbs, Great Pond Yacht Club Commodore.

Continued on page 2

Mid-Maine Marine Inc.
885 Kennedy Memorial Drive, Oakland, ME 04963
1/2 Mile West of Exit 127 off I-95 • 1-800-649-2628
www.midmainmarine.com

Check for Specials

Harris FlokBot

- See inventory,
- Used boats,
- Get quotes online

Pontoon Boat Packages to CELEBRATE Summer 2016

Wings Hill
Inn & Restaurant

Gourmet Dining
Culinary Institute Chefs
Casually Elegant Accommodations
Attentive Service

BELGRADE LAKES
www.wingshillinn.com
207-495-2400

CIRCA 1800

Hamlin's Marine

G SERIES BENNINGTON

290 West River Road, Waterville • 207-872-5660
581 Main Road North, Hampden • 207-907-4385
www.hamlinmarine.com

YAMAHA



Continued from page 1

The Noises of Silence

A waterfall
Waves on the shore
Wind in the trees
Raindrops...

These
The noises of silence
Are quieter still
Than no sound at all.

by Lionel Tardif,
year round Great Pond resident

another world, kayaks skimming across the open water, rowboats bobbing with the rhythm of the waves and sailboats... taking off like magic with the wind.

Whether for love or escape the quiet side of summer recreation ranks high among the lure of the region and is one of the most rewarding. Quiet pursuits, quiet power, quiet times that balance out the other lives that people have to live.



Hike & Bike: looking for a family fun adventure. LET'S GO! Sponsored by Inland Hospital is June 25, 10-noon at East Kennebec Trail, Benton Avenue, Winslow.

Quiet in recreation is not library, not museum quiet, although we have that, too. It is the quiet of undertones that soothe the soul. Hoof beats on hard pack, the whirl of a bicycle's wheel, the dip and drip of a canoe or kayak paddle and the snapping line of a casting rod, the crunch-crunch of hiking through leaves, the songs of so many birds that none stands out.

Through the quietness of the outdoors and outdoor recreation, there can be great bonding, observations and conversation, families can share an activity in common and all ages can gain a new respect for healthy exercise.

This summer be a birder, a hiker, a biker. Cross a cove in a sailboat, a kayak or a canoe. Fish early, take a walk late, and listen. It's all here...quietly.

How will you use your Home Equity Line of Credit?

3.25%
APR*
2Years

After the first 24 months, rate will be variable based on the Prime Rate, minimum
3.99%
APR*

Other rates and terms available.



Pay for college?



Knock down
high interest debt?



Fix up your home?

More than just a line, it's straight talk and a fair deal.
Call 800.303.9511 or visit SkowheganSavings.com



FDIC

*Offer good through June 30, 2016. No closing costs for customers with an Integrity Plus checking account unless an appraisal is required. Maximum loan-to-value is 85% on a 1-4 family, owner-occupied residence. APR rates based on a minimum draw of \$10,000 of new money. Introductory rate of 3.25% will remain fixed for 24 months after the date of closing then convert to a variable rate based on the Wall Street Prime rate at that time. This rate will be subject to change but will not be lower than 3.99% APR or higher than 16% APR. Usual closing costs range from \$300-\$400. All loans subject to credit approval. Other restrictions may apply.



Skowhegan
Savings

Straight Talk. Fair Deals.

We put you on the best path to find a primary care provider.



Finding a primary care provider who listens. Who delivers high quality, personal care. It should be easy—we agree. It's why Inland Hospital gives you *three simple ways* to find the respectful care you and your family deserve:

Call us at 1-800-914-1409 or
email us at inlandproviderfinder@emhs.org or
visit inlandhospital.org/providerfinder.

Whatever way is most convenient for you!



Inland Hospital

EMHS MEMBER

200 Kennedy Memorial Drive • Waterville • 861-3000
inlandhospital.org



MICHAEL
BREault

Creative
solutions for
all your Mac needs

Macintosh and iOS
support, based in
Western Maine,
working onsite throughout Maine



If you have Macs, iOS devices, software or network problems, websites you'd like built, or any ideas you would like to implement using Macintosh computers, give me a call and we can discuss if I can help...

207-578-0226 • www.michaelbreault.net



Table of Contents

The Quest for Quietness..... 1-2

Table of Contents..... 3

Loon Phrenology Presentation..... 3

The Luckiest Boy: When Guns and School Did Mix..... 4

Take It Outside: High Winds Lead To Great Hikes..... 5

Directory of Great Visits: Get Out and Go..... 6-7

The Dams Keeper Report..... 7

Calendar of Events: Dozens of Outings..... 8-9

The Kennebec Corridor Map 9

Kids Day in Capitol Park..... 9

Belgrades and Beyond Map..... 10-11

Cobbossee Watershed Map..... 12

Upcoming: Put These Outings on the Calendar..... 12

Conservation Too: Stormwater Runoff 13

Cobbossee 5K on July 4..... 13

Accommodations: Stay For Awhile..... 14

Notebook and News Everyone Can Use..... 14

Dining: Family-Friendly and Fun..... 15

Grill Safety Guidelines..... 15

Business Directory: Goods, Services, More..... 16-17

Associations, Organizations, Groups..... 17

Expressions: Crafts and History; Fiberarts Exhibit..... 18

LakeSmart: Erosion Control Mulch..... 18

Business: A Grant for Smithfield Food Pantry..... 19

UMaine Offers
Signs of the Seasons
Training Program



The lilacs are blooming, dandelions cover the fields, and birds of all sizes and colors are coming back to Maine. These common signs of spring are just a few indicators of a much larger cycle of seasonal changes that affect the plants, animals, and humans of Maine. The study of these seasonal changes is called phenology, and it can help the illuminate the local effects of global climate change. A six-year-old University of Maine Cooperative Extension and Maine Sea Grant program called Signs of the Seasons is doing just this – with the help of volunteers.

Volunteers of all ages are invited to become citizen scientists through Signs of the Seasons trainings offered across the state, including one in Belgrade Lakes on Wednesday June 29th. New this year, a subset of trainings will focus on observing loons in partnership with Maine Audubon. Participants will learn how to identify and record changes in plants and animals found in their own backyards, schoolyards, and other favorite outdoor locations. Data collected will be contributed to an online database hosted by the National Phenology Network. For more information about Signs of the Seasons and to register for a training, visit <http://umaine.edu/signs-of-the-seasons/> or contact Esperanza Stancioff at esp@maine.edu or (207) 832-0343. All trainings are free and open to the public, though registration is required.

Summertime in the Belgrades

--A Cider Mill Press Publication--
PO Box 290, Belgrade Lakes, ME 04918
Editor: Esther J. Perne, 207-495-3777 • ebelnews@earthlink.net
Advertising Director: Erle Morse, 207-495-3777 • ebelnews@earthlink.net
Layout Design: Michael Breault, 207-578-0226 • mo.breault@gmail.com
Webmaster : Gregor Smith • gregor@roadrunner.com
www.sumbelnews.com

This publication is copyrighted ©MMXVI, Cider Mill Press Publications, All Rights Reserved.

CSS Cayer
Security Services, Inc.

COMMERCIAL & RESIDENTIAL
Burglary & Fire Alarm Systems
Video Surveillance & CCTV
Access Control
24 Hour UL Listed Monitoring Service

453-9177
www.cayersecurity.com

NORTH BAY ESTATES
ROUTE 8 • NORTH BELGRADE

~ **FOR SALE** ~

Custom Built Homes
by *Craig's Carpentry*
1 & 2 acre lots
with lake views from
Great Pond overlook
Craig Alexander
cell (207) 649-3749 • crgsnbe@yahoo.com

Join us...and help protect our lakes!

Protect and Preserve



EST. **B.L.A.** 1908

Belgrade Lakes Association
137 Main Street, Belgrade Lakes, Maine 04918
207-512-5150 • www.belgradelakesassociation.org



—The Luckiest Boy—

Guns After School circa 1960

by Rod Johnson

First off, let me say this story is not some sort of political viewpoint concerning guns in our midst. I do memoirs as I recall them and this story struck me—as times have changed in so many ways in very few years. Perhaps that has always been the way of things, but in thinking about this gun story and looking back 56 years, the changes are dramatic.

Yes, we lived in Maine, so we were not exactly mainstream America but certainly on the fringes. We live in a less populated state than many in the USA, and we have a history of hunting, trapping, being independent, and so on. Even our state's economy had some to do with the hunting seasons, which offered cabins to stay in along with promises of bagging a deer or some grouse during the months of October and November. This, coupled with spring and summer fishing seasons, helped bolster the shoulder seasons for Mom and Pop small business. All of this, along with the paper industries, gave the Maine folks a chance to make a living while continuing some of the ways of our forefathers.

At very young ages, the kids who were interested in going hunting with their fathers got to do so. This often happened at the ages of perhaps 8 or 10 years. The fathers saw it as a chance to teach and share, almost like on the job training. Most of the boys in my town of Belgrade were part of that scene, and to this day I think many still are. The dad's first responsibility was to tell us that you never ever point a gun at anyone, only a target or wild game you intend to kill. Often, target shooting took place in a gravel pit, where those rules applied and were constantly reinforced.

By the time we were 12 or 14, many of us had been on real hunts and some of us had shot deer, or at least shot at deer. Grouse (partridge), pheasant or woodcock, were also seasonal targets. Usually, young boys learned to shoot a 22 caliber first, then a light shotgun such as a 20 gauge, and eventually a powerful long reaching deer rifle such as a 30-30 Winchester. Some of our fathers still had old rifles used in earlier wars such as the 30-40 Krag, Carabines, British 303, 38-40, and more. That was the case at my house and the "trapping room" had at least a dozen guns of varying types for various uses, Grampa's old 10 gauge scatter gun included. Use of these weapons was not



The Luckiest Boy with first deer, age 10

only allowed, but condoned with proper caution, as well as the responsibility to care for them. A gun left uncleaned was an offense most fathers would not tolerate and we had to remedy that quickly.

A couple of stories that drive home the picture of kids using guns during this era come to mind and here they are. Let's back up in time to the mid 1950's when my older brother was a senior at Belgrade High School. The new young teacher that came to Belgrade that year was a young man from Portland named John Caminiti. Throughout his life, John loved to tell stories of his indoctrination into country living during his first few months at Belgrade High. John had homeroom for the seniors and the room overlooked Depot Road and the ridge up behind Reggie and Phronie Hammond's house. One of the boys in the room yelled DEER and pointed to the ridge across the road. An uproar ensued and a half dozen or so of the boys got up and ran out the door. Some of the names remembered are Buster Hammond, Dick Johnson, Mel Pray and Tom Sawyer. They ran to their cars and got their rifles, then headed across the street to chase the deer. John was somewhat flabbergasted but ultimately came to love Belgrade, married Murner Pray and became a local character himself. He and Murner lived on Woodland Camp Road for many years until his recent passing. John is sadly missed by all.

The above true story illustrates that it was not abnormal at all for teenagers to bring their rifles with them to school during hunting season. Often, boys hunted early in the morning before school and again after school until dusk.

Back in the '60's friends Rick, Howard and I would come home from school, get off the bus, run home to change clothes and get our guns. During the fall months we would often set a place to regroup with our 22 rifles and head off to hunt squirrels over on Dry Point Drive, where my wife and I now live. The camps were all empty and the owners had returned home by late September. We had the place to ourselves. Mother's only words when I went out the door were: be careful and be home by 5 o'clock. Father's only words were: keep those guns pointed at the ground and no shooting insulators off the telephone poles. Hearing gunshots in the fall was so commonplace that no one thought much about it. Most of the shots were guys shooting at targets, honing their skills, and certainly no one had thoughts that anything wrong was going on. How things have changed in 50 to 60 years, some for the better and some not! THE END



Tree spirits
winery & distillery

Visit our tasting room
for award winning
wines and spirits made
from local apples,
pears and maple syrup.
Now distilling Absinthe.
Private group tastings
and tours available.

152 Fairfield Street
Oakland, ME 04963
www.treespiritsofmaine.com



— Take It Outside —

When the Wind Blows: Hike

by Pete Kallin

The weather this week has been very windy, which has cut into my fishing a bit. However, it has made for nearly perfect hiking weather- cool with a brisk wind to keep the bugs away. I hiked several of the BRCA hiking trails this week and ran into many others out doing the same. At Mount Phillip, I ran into the Webelos Den of Boy Scout Pack 436 of Waterville. Webelos (derived from the words: “WE’LL BE LOyal Scouts”) are 10- and 11-year old boys who are transitioning from Cub Scouts to Boy Scouts. Several of the boys were earning their “hiking belt loop” on the trail, which is just challenging enough to give the boys the taste of climbing hills and earning a beautiful view at the top without being so difficult it discourages them. I managed to get a few of them to sit still for a photo (It was slightly easier to get the adult leaders to sit still). The adult den leader had first hiked that trail almost 40 years ago when he was 6 or 7, well before BRCA purchased the property in partnership with Pine Island Camp in 2004. He said it is much nicer and better marked now and is a popular destination for the Waterville scouts. The Boy Scouts of America (BSA) and Girls Scouts of America (GSA) are great programs for getting young people introduced to basic outdoor skills and learning other valuable life lessons

Also at Mount Phillip this weekend was Julie, a young software consultant and sales representative from Cambridge, MA, who was up for the weekend. Julie grew up in Oakland and last hiked Mount Phillip with her parents when she was “a little girl.” She said that while Cambridge is exciting and stimu-



Julie sitting in the Jean Anderberg bench on Mt Phillip.



Landlocked alewife.

lating, she loves coming back to Maine in the summertime to hike in the woods near the lakes to relax and recharge her batteries.

Most of the fishing I’ve done this week has been targeted at catching small fish in the weedy shallow areas where small fish try to hide from the big fish

that like to eat them. My purpose was to collect some specimens for the fish tanks at the Maine Lakes Resource Center (MLRC). Normally transporting live fish in Maine is illegal and subject to fines up to \$10,000 but we received a special, limited-time per-

Continued on page 19...



When your provider is not available, you have two choices:



MaineGeneral Express Care for non-life-threatening symptoms

Including

- Minor injuries, illnesses, aches or pains
- Colds, flu, fever, seasonal allergies
- Cuts, rashes & other skin problems
- Sprains & strains
- Infections

Costs

- Similar to provider practice costs

Hours

- Open 7 days a week
- Monday - Friday: 8 a.m. - 7:30 p.m.
- Saturday, Sunday and Holidays: 8 a.m. - 5 p.m.
- Closed Thanksgiving and Christmas

Convenience

- Walk-in care: no appointment needed
- We update your medical records
- If you do not have a primary care provider, we will treat you and help you find a provider

Or

Emergency Department for severe or life-threatening symptoms

Including

- A hard time breathing
- Sudden or severe pain
- Chest pain
- Sudden weakness or trouble speaking
- Bleeding that won’t stop
- Severe headache
- Thoughts of harming yourself or others

Costs

- Higher costs than MaineGeneral Express Care
- Co-payments can vary widely

Hours

- Open 24/7

Convenience

- Wait time varies. Patients with the most severe symptoms are treated first.

Make the smart choice for you.

MaineGeneral Express Care | 15 Enterprise Drive | Augusta, ME 04330 | 207.621.8880 • 211 Main Street | Waterville, ME 04901 | 207.877.3450 | mainegeneral.org





Calendar Directory

TOWN BY TOWN...

GREAT VISITS, AWESOME OUTINGS – ART, MUSIC, CULTURE, HISTORY, RECREATION, FARMERS' MARKETS, TRAILS, SCENIC SITES, AND MORE...

AUGUSTA

- **Viles Arboretum**, 224 acres with 6 miles of year round walking trails, including art and sculpture trail, open dawn to dusk, Visitor Center open Monday-Friday, 9 am-4 pm, admission free, 626-7989, www.vilesarboretum.org, 153 Hospital Street
- **Farmers' Market at the Arboretum**, indoors, Friday 1-5 pm
- **Art in the Capitol**, Maine Arts Commission monthly self-guided exhibits in State House hallways (Mon-Fri 8 am-5 pm), Blaine House (call for times), and Maine Arts Commission Office (8:30am-4:30 pm), 287-6746, mainearts.maine.gov
- **Children's Discovery Museum**, CDM, hands-on displays, activities, Tuesday-Thursday 10 am-4 pm, Friday-Saturday 10 am-5 pm, Sunday 11 am-4 pm, admission, 622-2209, www.childrensdiscoverymuseum.org, 171 Capitol Street
- **Danforth Gallery**, Jewett Hall, art exhibits, UMA-1234, www.uma.edu
- **Governor's Mansion**, 1830 Blaine House, Tuesday-Thursday 2-4 pm, 287-2121, www.blainehouse.org, State Street
- **Holocaust and Human Rights Center of Maine**, Michael Klahr Center, Monday-Friday 8 am-4 pm, 621-3530, www.hhrc.uma.edu, University of Maine at Augusta, off Route 27
- **Kennebec Historical Society**, Wednesday-Friday 10 am-2 pm, 622-7718, www.kennebechistorical.org, 107 Winthrop Street
- **Maine State Museum**, Tuesday-Friday 9 am-5 pm, Saturday 10 am-4 pm, \$2 adults, \$1 ages 6-18, 287-2301, www.mainestatemuseum.org
- **Maine State House**, Hall of Flags, House and Senate Rooms, Klir Beck dioramas, Monday-Friday 8 am-5 pm, book tours at Maine State Museum, walk-ins welcome 9 am-1 pm, 287-5600, www.maine.gov, State Street
- **Maine State Library**, Monday-Saturday opens 9 am, 287-5600, www.maine.gov/msl/, State Street
- **Museum in the Streets**, walking/history tour, www.augusta-maine.gov, Water Street/downtown.
- **Old Fort Western**, 1754 fort, house, store, 1-4 pm daily, admission \$6, 4-14 years \$4, 626-2385, www.oldfortwestern.org, Cony Street
- **Riverfront Park**, boat launch, Greenway Trail, playground, eastside Kennebec River
- **Kennebec River Rail Trailhead**, Maine State Housing Authority parking lot, 623-8162, www.krrt.org, Water Street
- **University of Maine at Augusta Fitness Trail**, 2 miles of wooded trails, near Civic Center, Route 27
- **Farmers' Market at Mill Park**, Tuesday 2-6 pm, 626-2305, www.farmersmarketmillpark.org/, North Water Street
- **Farmers' Market at Turnpike Mall**, 549-5112, Wednesday and Saturday 10 am-1 pm, Western Avenue

BELGRADE LAKES

- **Belgrade Lakes Market**, 320-8303, careybor@yahoo.com, Sunday 8 am-1 pm, Main Street
- **Great Pond Mailboat**, 215-7520, Monday-Saturday 10 am,

Post Office, Main St.

- **The Belgrade Community Center for All Seasons**, pool and lakefront, gym, playground, picnic area, rec programs, 495-3481, www.belgrademaine.com, 1 Center Drive
- **Union Church Coffee House**, check for schedule, 7:30 pm, \$5, 495-3599, www.unionchurchmaine.org, Main Street
- **Belgrade Historical Society**, 495-2973, belgradehistoricalsociety.org
- **Belgrade Lakes Market**, Sun 8 am-1 pm, Main Street
- **Peninsula Park on Long Pond**, picnic tables, Main Street
- **Maine Lakes Resource Center**, 512-5150, www.maine-lakesresourcecenter.org, 137 Main Street

FAIRFIELD

- **Fairfield Historical Society**, 1890 Cotton-Smith History House, every Tuesday 9 am-12 noon and 1-4 pm and second Saturday of month, 453-2998, www.fairfieldmehistoricalociety.net, 42 High Street
- **Farmers' Market**, 948-5724, Wednesday 2-6 pm, Saturday 9:30 am-1:30 pm, Nazarene Church parking lot, 81 Main Street

FARMINGTON

- **Farmington Historical Society, Titcomb House Museum**, 778-4275, Wednesday and Saturday, 11 am-2 pm, July-August, www.farmingtonhistory.org, 118 Academy Street
- **Nordica Homestead Museum**, opera singer Lillian Nordica costumes, jewelry, mementos, 778-2042, Tuesday-Saturday 10 am-12 noon and 1-5 pm, Sunday 1-5 pm, www.lilliannordica.com, 116 Nordica Lane, Holley Road
- **Contra Dance**, 491-9928, www.starleft.org 2nd Saturday of the month, all welcome, 6:30-7:30 pm family dance, 8-11 pm regular dance, admission, Grange Hall, Bridge Street, Route 43, West Farmington
- **University of Maine campus and Arboretum**, four walking tours with informal guide pamphlet to campus trees, 581-1541, www.umaine.edu/arboretum/, downtown
- **Farmers' Market**, 778-6602, Friday 9 am-2 pm, Better Living Center parking lot, Front Street; Saturday 8 am-12 noon, Main Street
- **Meetinghouse Park and Gazebo**, weekly concerts throughout summer, downtown
- **Fairgrounds**, events throughout summer, Franklin County Fair in September, High Street

GARDINER

- **Artdogs and Circling the Square Fine Art Press**, Friday 1-5 pm, Saturday 10 am-4 pm, 582-6600, www.theartdogs.com, 275-277 Water Street
- **Johnson Hall Performing Arts Center**, 582-7144, www.johnsonhall.org 280 Water Street
- **Monkitree**, art exhibits, 512-4679, www.monkitree.com, Tuesday-Friday 10 am-6 pm, Saturday 12-6 pm, 263 Water Street
- **SpinOff Studio**, 588-7297, spinoffstudio.org, Monday-Friday 8:30 am-4:30 pm, 405 Water Street
- **Farmers' Market**, 512-8022, www.gardinerfarmersmarket.org, Wednesday 2-6 pm, rain or shine, The Common
- **Kennebec River Rail Trail**, 623-8162, www.krrt.org, access near Gardiner/Randolph Bridge, 6.5 miles to Augusta
- **Waterfront Park**, picnicking, events throughout summer, Kennebec River

GREENE

- **Araxine Wilkins Sawyer Memorial**, free entertainment programs, monthly - Friday 2 and 7 pm, 946-5311, www.sawyer-foundation.com, 371 Sawyer Road, off Route 202

HALLOWELL

- **Harlow Gallery**, Kennebec Valley Art Association, 622-3813, www.harlowgallery.org Wed- Sat, 12-6 pm, 160 Water Street
- **Gaslight Theater**, 626-3698, www.gaslighttheater.org City Hall, 1 Winthrop Street
- **Museum in the Streets**, history/walking tour, www.historichallowell.org, downtown
- **Farmers' Market**, 622-1350, Sun 3-6 pm, Water Street
- **Vaughn Woods and Homestead**, 166 acre park/trails/homestead, Middle Street
- **Kennebec River Rail Trail**, www.krrt.org, to Augusta, Farmingdale/Gardiner, Water Street
- **Waterfront Park**, deck/walkway on Kennebec River, North Water Street

HINCKLEY

- **L.C. Bates Museum at Good Will-Hinckley School**, early 20th century natural history and cultural exhibits, nature trails and camps, adults \$3, up to 17 years \$1, 238-4250, www.gwh.org Wednesday-Saturday 10 am-4:30 pm, Sunday 1-4:30 pm, Route 201

KINGFIELD

- **Ski Museum of Maine**, 265-2023, www.skimusuemofmaine.org, 256 Main Street
- **Stanley Museum**, 265-2729, www.stanleymuseum.org, memorabilia/displays on photographs, violins and Stanley Steamers, Tuesday-Sunday 1-4 pm, 40 School Street

LIVERMORE

- **Washburn-Norlands Living History Center**, 18th-19th century mansion/farmstead/schoolhouse, library, chapel, 897-4366, www.norlands.org, admission, living history tours Tuesday and Thursday 1-4 pm, 290 Norlands Road

MADISON

- **Lakewood Theater**, Maine's Summer Theater, Young Performers Camp, 474-7176, www.lakewoodtheater.org, Route 201
- **Skowhegan School of Painting and Sculpture**, 474-9345, www.skowheganart.org, summer evening artists lecture series, East Madison Road

MONMOUTH

- **Monmouth Museum**, local and regional Maine history, Wednesday-Sunday 1-4 pm, 933-2287, www.monmouthmuseum-inc.org, 751 Main Street
- **The Theater At Monmouth**, The Shakespeare Theater of Maine, Cumston Hall, 933-9999, www.theateratmonmouth.org, Main Street

MOUNT VERNON

- **D.E.W Animal Kingdom**, Zoo, 293-2837, 918 Pond Rd, Route 41
- **Villages Market**, farmers/crafters, Saturday 10 am-2 pm (start end of June), next to Flying Pond Store, sharihamilton@gmail.com, Route 41



Elliot B. Thayer, PLS, PE
Andrew Dunbar, PLS, LPF, LSE
RESIDENTIAL & COMMERCIAL
SITE DESIGN
STATE & LOCAL
PERMIT APPLICATIONS
PREPARED & PRESENTED
17 Hasson Street
Farmingdale, ME 04344
582-7762
www.thayereng.com

Lakepoint

REAL ESTATE

P.O. Box 221, 221 Main Street
Belgrade Lakes, Maine 04918
Cell: (207) 592-5577
Office: (207) 495-3700
Fac: (207) 495-3707
www.belgradelakepoint.com
stephanie@belgradelakepoint.com



Stephanie Yeaton
Broker

PAUL HANNA'S PLUMBING



207-495-3805

New Homes and Remodels ~ Camps
Water and Sewer Pumps ~ Water Filtration
Paul Hanna, Licensed Master Plumber



NEW PORTLAND

- **Nowetah's American Indian Museum and Craft Shop**, 628-4981, www.nowetahs.webs.com/, daily 10 am-5 pm, free, 628-4981, 2 Colegrove Road, Route 27
- **Wire Bridge**, 1864, probably only wire suspension bridge in U.S., off Route 27

NEW SHARON

- **Farmers' Market**, Saturday 9 am-1 pm, Douin's Market, 491-9025, 150 Mercer Road, Routes 2/27
- **New Sharon Historical Society**, Saturday 1-3, 778-4167, Routes 2/27

NORRIDGEWOCK

- **Norridgewock Historical Society Museum**, 1838 building, Saturday 10 am-3 pm, 634-5032, www.norridgewock.com, Mercer Road, Route 2
- **Oosoola Park**, picnic area, great playground, boat launch, on Kennebec River, Route 8

OAKLAND

- **Macartney House Museum, Oakland Area Historical Society**, 465-7549, Wednesday 1:30-4:30 pm, 1815 home with antique furnishings and Oakland artifacts, 25 Main Street
- **Town Parks**, playground, picnic tables, swimming area, boat launch area, Belgrade Road on Lake Messalonskee and McGrath Pond Road on McGrath Lake
- **Farmer's Market**, Friday 2-6 pm, 465-3094, Pine Acres Parking Lot, 895 Kennedy Memorial Drive

READFIELD

- **Readfield Historical Society and Museum** in 1853 school-house, 685-4662, www.readfieldhistorical.org, Thursday and Saturday 10 am-2 pm or by appointment, Route 17, Readfield Depot

ROME

- **Mt. Philip Grange**, suppers 3rd Sat of month, 4:30-6 pm, all you can eat beans, cornbread, rolls, chop suey, pies, Routes 135/225
- **Trails**: Mount Philip, Route 225; The Mountain, Route 27; French's Mountain and Kennebec Highlands, Watson Pond Road; for information call 495-6039 or visit www.belgradelakes.org; maps available at BRCA, 137 Main Street, Belgrade Lakes

SIDNEY

- **New England Music Camp**, concerts free and open to the public, Bowl-in-the-Pines on Lake Messalonskee, 465-3025, www.nemusiccamp.com, 8 Goldenrod Lane, Route 23
- **Sidney Historical Society**, 724-8032, www.sidneyhistoricalociety.org, 2986 Middle Road
- **Silver Spur Riding Club**, horse shows, River Road, Route 104

SKOWHEGAN

- **Margaret Chase Smith Library**, residence, home, museum exhibits, 474-7133, www.mcslibrary.org, free, Monday-Friday, 10 am-4 pm, 54 Norridgewock Ave.
- **History House Museum**, 1800s local history and culture, heirloom gardens, free, Tuesday-Saturday, 10 am-4 pm, 474-6632, www.skowheganhistoryhouse.org, 66 Elm Street
- **Fairgrounds**, weekly horse shows/competitions, free public

events, covered arena, Skowhegan State Fair in August, 474-3621, Madison Avenue, Route 201

- **Farmers' Market**, Wednesday 3-6 pm, Saturday 9 am-1 pm, weekly entertainment, 938-3906, Somerset Gristmill parking lot, downtown

SMITHFIELD

- **Fairview Grange**, 362-2791, Route 8
- **Smithfield History Society "The Groves House,"** 634-4392, 21 Lakeview Drive
- **Sunbeam Roller Rink**, 362-4951, 830 Village Rd, Route 8
- **Sunset Camps**, public beach, 362-2611, www.sunsetcamps.com, 834 Village Road, Route 8

UNITY

- **Unity College Centre for the Performing Arts**, folk genre music, 568-3147, www.unitymaine.org, 42 Depot Street

WATERVILLE

- **Aqua City Actor's Theatre (ACAT)**, 873-7000, www.acattheatre.org, Waterville Opera House Studio Theater, Main Street
- **Museum in the Streets**, downtown history/walking tour, www.themuseuminthestreets.com/waterville.htm
- **Head of Falls Park/Two Cent Bridge**, historic foot bridge over Kennebec River connecting Waterville and Winslow, Front Street
- **Common Street Arts**, 872-2787, www.commonstreetarts.org, Wednesday-Saturday 12-6 pm, 16 Common Street
- **Colby College Museum of Art**, 859-5600, www.colby.edu/museum/ Tuesday-Saturday 10 am-5 pm, Sunday 12-5 pm, free admission, Colby College Campus, Mayflower Hill
- **Colby College Special Collections**, Miller Library, Monday-Friday 10 am-12 noon and 1-4 pm, free admission
- **Thomas College Art Gallery**, 180 West River Road
- **Waterville Historical Society and Redington Museum**, 1814 home and pharmacy, 872-9439, www.redingtonmuseum.org. Tuesday-Saturday tours at 10 and 11 am, 1 and 2 pm, 62 Silver Street
- **Waterville Opera House**, 873-7000, www.operahouse.com, 93 Main Street
- **Farmers' Market**, Thursday 2-6 pm, 680-2055, www.watervillefarmersmarket.org, The Concourse parking lot

WAYNE

- **Farmers' Market**, 685-4657, <http://waynefarmersmarket.weebly.com>, Saturday 9 am-noon, Town Green, at the Mill Pond, Main Street

WILTON

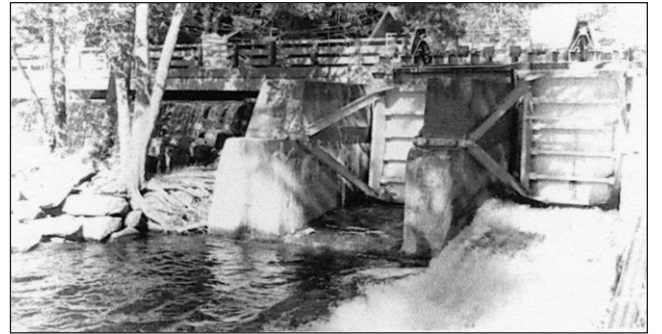
- **Wilton Farm & Home Museum**, 645-2091, 645-4578, www.thewiltonfarmandhomemuseum.org, Saturday 1-4 pm or by appointment, 10 Canal Street

WINSLOW

- **Fort Halifax on the Kennebec River**, historic fort tower, park, Route 201

WINTHROP

- **Norcross Park**, playground, picnic site, boat launch on Maranacook Lake
- **Farmers' Market**, 446-2899, Tuesday and Saturday 9 am-1 pm, town office parking lot, 17 Highland Avenue



The Dams Keeper Report

As of this writing and without any rain in the past week, Great Pond is presently at 2" below full pond (i.e. the water is just about 2" below the Village stone spillway). Gate 1 is open just about 3" which does give our residents and fisheries a little water to work with.

With both gates completely closed at Wings Mill, Long Pond is right at full pond as is upper Long Pond, nine miles to the North. Present objectives are still to maintain Great and Long Ponds at 2" above full just in case we end up with another dry summer like last year. We would like to keep a little water in reserve if we can and a little help from mother nature in the way of some precipitation would be nice!

Enjoy your summer! We've been waiting long enough for it!

Dick Greenan

Secretary, Belgrade Lakes Watershed Dams Committee



Webelos Scouts Sam Bernier and Ezra Haviland with adult leaders from Pack 436. Go to page 5 for more of Peter Kallin's *Taking It Outside*.

Additions/Updates/Corrections: Please contact Summertime in the Belgrades, 495-3777, with changes to this Directory.

Have a bucket list? Want a new experience?



C+E SEGWAYS

Located in Manchester, Maine

We offer tours by appointment only for ages 12 and up.

Safe, quiet and a wicked good time!

Reasonable Rates!

(207)215-4529

Call now to book a new adventure with us!

WATCHES • DIAMONDS
EXPERT WATCH REPAIR • STONESETTING • GOLDSMITHING

Larsen's Jewelry

SERVING YOU SINCE 1962



57 MAIN STREET
WATERVILLE, MAINE 04901

MARK A. LARSEN

207-872-6301
1-800-697-1874

J & M Logging, Inc.

622-6353

Cut to order
in lengths from 14" to 23"

Firewood

Green Certified Wood, Seasoned, & Ash
Cut, Split & Delivered

853 Civic Center Drive, Augusta, ME 04330

BELGRADE BOAT STORAGE

FREE LAKESIDE BOAT
PICKUP & DELIVERY

DARE TO COMPARE

Best Prices on Inside,
Outside Boat Storage,
Shrinkwrapping &
Winterization

Craig Pooler
Cell 207-314-3287 • Office 207-495-3421
Email: cpooler1@myfairpoint.net
www.BelgradeBoatStorage.com



— Calendar —

Friday 6/24 and Saturday 6/25 - Kingfield Pops 2016 Festival of the Arts, featuring Friday night Art Walk, Saturday Road Race and art festival and Saturday night the POPS Concert with the Bangor Symphony Orchestra, other entertainment and a fireworks finale, 265-7677, www.kingfieldpops.com, concert at the Kennedy Farm, art events in downtown Kingfield.

Thursday 6/23 through Saturday 7/2 - "Always, Patsy Cline," 474-7176, Lakewood Theater, Route 201, Madison.

Friday 6/24 through Sunday 6/26 - "Are You Being Served?", based on popular British television comedy, 7:30 pm Friday and Saturday, 2 pm Sunday, 626-3698, Gaslight Theater, Winthrop Street, City Hall, Hallowell.

Friday 6/24 - "Historic Skowhegan Falls/Island," led by Melvin Burnham, Director Skowhegan History House, 10 am, 474-6632, meet at Arnold Park, Skowhegan Island, rear of the Federated Church Parking Lot, Skowhegan.

Friday 6/24 - SNAFU Comedy, two masters of the ridiculous, suitable for all ages, 2 and 7 pm, air-conditioned, free, 946-5311, Araxine Wilkins Sawyer Foundation, Sawyer Road, Greene.

Friday 6/24 - "Dangerous Liaisons," a Franco-American Masquerade Ball with Local Celebrity Auction, to benefit the Augusta Downtown Alliance and the colonial Theatre, business attire and mask required, tickets available at Calumet Club and participating businesses, \$25 per person, 7 pm-midnight, 623-8211, Le Club Calumet, 334 West River Road, Augusta.

Friday 6/24 - Skowhegan School of

Painting Lecture Series, Joanna Malinowska, resident artist, free and open to the public, 8:30 pm, 474-9345, Old Dominion Fresco Barn, 39 Art School Road, Madison.

Saturday 6/25 and Sunday 6/26 - NEPHC Showdown in Skowtown APHA/All Breed Horse Show, covered arena, concessions, free to the public, 446-9910, Skowhegan Fairgrounds, Madison Avenue/Route 201, Skowhegan.

Saturday 6/25 - 46th Annual Maine Lakes Conference, speakers, workshops, networking, lunch, 495-2302, Unity College Center for the Performing Arts, Unity.

Saturday 6/27 - Huge Indoor Yard, Bake & Book Sale, 8 am-2 pm, 622-0552, South Parish Congregational Church, Augusta.

Saturday 6/25 - Petanque Tournament, admission charged, 9 am, 622-3389, Mill Park Petanque, Augusta.

Saturday 6/25 - LET'S GO Hike & Bike, Inland Hospital's free Family Fun Series, 10 am-noon, 861-3292, East Kennebec Trail, Benton Avenue, Winslow.

Saturday 6/25 - Kids Day In Capitol Park, activities, demonstrations, characters, entertainment, food, fun, free for children and families, 11 am-3 pm, rain location Augusta Civic Center, sponsored by Kennebec Valley Chamber of Commerce, 623-4559, Capitol Park, Augusta.

Saturday 6/25 - Strawberry Festival, crafts, farm tours, shortcake, more, 11 am-4 pm, 897-4366, Washburn-Norlands Living History Center, Livermore.

Saturday 6/25 - Annual BBQ, to raise funds for Smithfield Volunteer Fire Department, 11 am 'til gone, Main Street, Smithfield.

Saturday 6/25 - Italian Night, public sup-

per, 4-course meal, \$10 adults, \$5 youth 5-12 years, under 5 free, 5-8:30 pm, 5-6 pm dinner only, 6:30 seating includes Murder Mystery, Union Church, Main Street, Belgrade Lakes.

Saturday 6/25 - Haunted History Lantern Tour, 7:30 pm, 380-3806, Hallowell.

Saturday 6/25 - Opening, "Cyrano," 933-9999, Cumston Hall, The Theater at Monmouth.

Sunday 6/26 - Kennebec River Rail Trail Half Marathon, Relay and 5K Race/Walk, 7:30 am, www.krrt.org, 213-6007, City Center, Augusta.

Sunday 6/26 - International Sun Day celebration, look through a telescope safely at the sun or enjoy great rainy day activities inside, 1-4 pm, 238-4250, L.C. Bates Museum, Route 201, Hinckley.

Sunday 6/26 - Belgrade Regional Conservation Alliance Hike, with Mel Croft and Peter Kallin, 2 pm, 495-6039, The Mountain, Route 27, Rome.

Sunday 6/26 - Presentation and signing by Maine author Ellen Cooney, who wrote "The Mountaintop School for Dogs and Other Second Chances," free and everyone invited, 3 pm, reception following, 685-3612, Cary Memorial Library, 17 Old Winthrop Road, off Route 133, downtown Wayne.

Sunday 6/26 - Snow Pond Symphony Orchestra with Guest Soloist Jo-Ann Sternberg on the clarinet, classical and pops favorites, ticketed event, 3 pm, 465-3025, Bowl-in-the-Pines, NEMC, 8 Goldenrod Lane, Sidney.

Monday 6/27 - Free Collections Care Workshop, how to treat and handle organic objects, Conservator Ron Harvey will demonstrate and teach professional methods, 9 am-3 pm, Restoration of the

Hemingway Marlin, 2-3 pm, free and open to the public, 238-4250, L.C. Bates Museum, Route 201, Hinckley.

Tuesday 6/28 through Friday 7/1 - Oakland Public Library Book & Bake Sale, four days only, select gently used hardcover and paperback books, as well as rare and out of print titles, homemade bread, pies and cookies, 10 am-7 pm Tuesday, 10 am-6 pm Wednesday-Friday, 465-7533, 18 Church Street, Oakland.

Tuesday 6/28 - Mad Science of Maine "Olympic Madness, 10 am, 495-3508, Center for All Seasons, Route 27, Belgrade Lakes.

Tuesday 6/28 - Veayo Twins, Red Barn Free Summer Concert Series, 7-8:30 pm, 660-3663, Augusta.

Tuesday 6/28 - Quarry Road Summer Race Series, Makeup or Course Previews, to benefit the Boys & Girls Clubs and YMCA, 6 pm, (Kids Race 5:30 pm), fun, family friendly, all abilities, \$35, www.quarry-roadraces.com, Quarry Road Trails, Waterville.

Tuesday 6/30 - Rock On The River Music Series, free outdoor concert, 7-8:30 pm, Hallowell Riverfront Boardwalk, Water Street, Hallowell.

Wednesday 6/29 - Afternoon Art Program, fun mini workshop exploring watercolors, pencils, collage, charcoal, etc. 1 pm, 238-4250, L.C. Bates Museum, Route 201, Hinckley.

Wednesday 6/29 - "Signs of the Season," a New England Phrenology Program, focus on loons, 4-6:30 pm, free, 832-0343, Maine Lakes Resource Center, Main Street, Belgrade Lakes.

Wednesday 6/29 - Public supper, entrée, rolls, coffee or lemonade, homemade dessert, 5 pm, Fairview Grange, Route 8,

MAINE~LY ELDER CARE

"Caring for the ones who cared for us"



In - Home Nursing • Personal Care Services • Homemakers
• Emergency Response Systems • Transportation Services

STATE REGISTERED PERSONAL CARE
AND HOME MAKER AGENCY

465-3249

28 Center St., Oakland, Me 04963

www.Maine-lyElderCare.com

denise@Maine-lyElderCare.com

DAY'S REAL ESTATE

"The Waterfront Specialists" 207-495-3111

262 Augusta Road (Route 27) • Belgrade Lakes, Maine 04918 •

Web: www.daysrealestate.com • e-mail: daysrealestate@roadrunner.com



GREAT POND~HOYT ISLAND ~ Wonderful 7.4 acre +/- lot with 265' +/- shorefront with one room camp with 12x12 deck, generator power, gas lights, outhouse and 22' wooden dock. Electricity nearby. **\$110,000**



GREAT POND~ Quaint, private 2 BR cottage at the water's edge with 200' +/- shorefront and includes additional building with its own dock & many possibilities. Motivated seller. Priced to sell! **\$209,900**



BELGRADE ~ Build your dream home in this wonderful subdivision with a view of Great Pond. Private 1.3 acre +/- wooded lot. Easy commute to Waterville, Augusta and surrounding areas. **\$27,900**



Smithfield.

Wednesday 6/29 - Waterfront Wednesday series, 6 pm, 626-2352, Waterfront Park, downtown Augusta.

Wednesday 6/29 - Illustrated Talk by Susan Beegel on Voyage to Ernest Hemingway's "The Old Man and the Sea," 7 pm, 238-4250, Prescott Auditorium, Good Will campus, Route 201, Hinckley.

Wednesday 6/29 - Free Summer Series, Faculty Recital, 7-9 pm, free, no ticket required, 476-6976, Alumni Hall, New England Music Camp, 8 Goldenrod Lane, off Route 23, Sidney.

Wednesday 6/29 - Skowhegan School of Painting Lecture Series, Yael Bartana, resident artist, free and open to the public, 8:30 pm, 474-9345, Old Dominion Fresco Barn, 39 Art School Road, Madison.

A Day Just For Kids - June 25

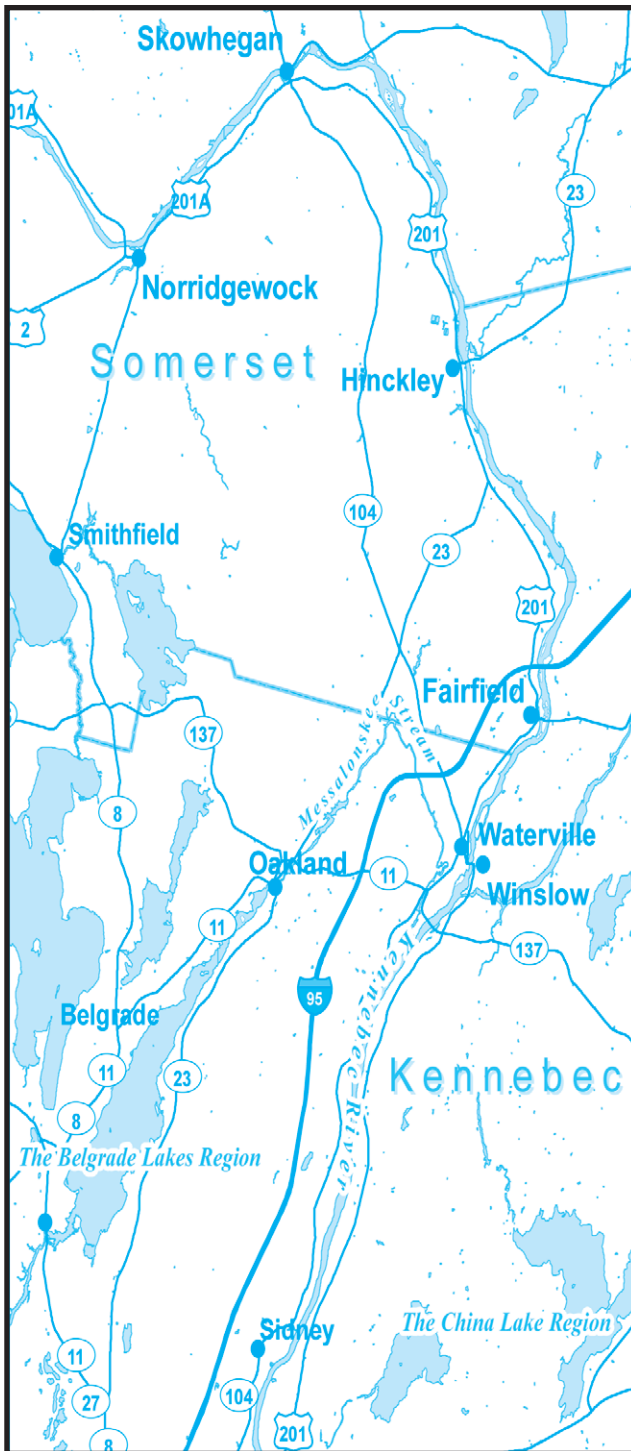
Booths, exhibits, displays, trucks of all sizes and types, vendors, concessions, entertainment, and character figures will fill Capitol Park (or the Augusta Civic Center if it rains) and amuse and entertain children and the young at heart at Augusta's Whatever Family Festival – a free event on Saturday, June 25, 11 am-3 pm.

There will be three stages for entertainment – a Kids Stage, a Dance Stage and the Capital Stage where B 98.5 will hold a country singing competition featuring up to 20 contestants qualified to make it to the finals. There'll be a half dozen Park Characters and almost three dozen Kids Activities. There will be a Touch A Truck area featuring fire, construction, boom and forklift trucks, the Hannaford antique truck, a helicopter and Firefighter and Jaws of Life demos.

The Park Characters will include Smokey Bear, Spotter the Otter, Earnie the Starfish, Lloyd the Android, Trusty Tree, Dr. Seymour Clearly the Owl, and Frozen's Elsa and Olaf.

Kids Activities will include face painting, bal-

Kennebec Corridor



loon animals, caricatures, bounces, crafts, photos, races and contests, treats, fun science, first aid and more. The Maine State Museum will have free admission from 10 am-4 pm. And there will be family activities at the YMCA.

All attendees to Kids Day in Capitol Park are encouraged to bring blankets, lawn chairs, sunscreen, and good walking shoes. For more information visit www.AugustaMaine.com or call 623-4559.

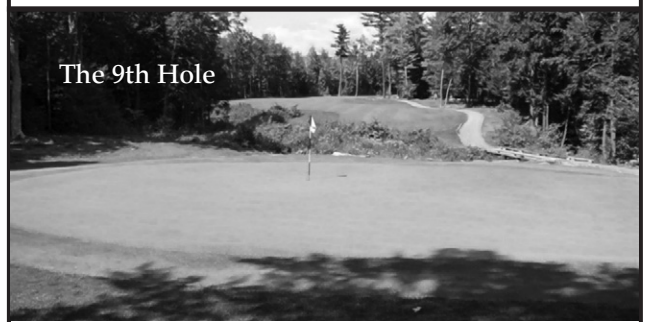


**THIRTY-SIX
GREAT REASONS**
MAINE'S ONLY 36-HOLE
PUBLIC GOLF COURSE
THE LARGEST GOLF FACILITY
NORTH OF BOSTON

Championship Golf, Full Pro Shop,
Driving Range, & Modern Clubhouse.
Groups Welcome

Natanis
GOLF COURSE

Webber Pond Road,
Vassalboro, ME • 207-622-3561



LakeHouse™
Renovations
Design • Build • Renovate

Traditional Style Camps,
Cottages and Lakefront Homes
207.242.3663
www.lakehousedesignbuild.com

ACME LAND SURVEYING, LLC
Professional Land Surveyors – Professional Foresters
Property Surveys, Subdivisions, Topographic Surveys, MLIs,
Elevation Certificates/LOMs, ALTA/ACS Surveys,
Deed Research, Wetland Delineation, Forest Management

108 Fairbanks Rd., Suite 5
Farmington, ME 04938
Website: www.acmelandsurveying.com

Tel. (207) 778-4081
Toll Free (800) 778-4081
Email: info@acmelandsurveying.com

Expanded in 2014 to Better Serve Our Customers

**Belgrade Lakes
Marine & Storage, Inc.**

Winter Storage for Summer Vehicles
Secure newer storage facilities accommodate boats on trailers, autos, and the largest RVs in 3 buildings totaling over 21,000 sq. ft. Electrical charging outlets are available. Reasonable rates for real protection from extreme winter storms and sun damage.

207-495-2378 • www.belgradelakesmarine.com
366 Augusta Road, Route 27, Belgrade, ME

Whatever needs updating at your house, we have the **home equity loan** to get you started.

5-year	10-year
4.21% APR¹	4.61% APR¹

Apply Today! Stop by your local Maine State Credit Union branch or call us at 623-1851.

¹The rate listed above is a fixed rate for a second mortgage. Closing costs and certain property/equity requirements apply. Rates presented above are for individuals with credit scores of 680 or higher. Individuals with credit scores of 679 and lower will receive a rate of 1.00% higher for each loan type. Loans are subject to approval and certain conditions may apply. ²The annual percentage rate (APR) for the 5-year home equity loan is 4.213% and is 4.612% for the 10-year fixed home equity loan. The APR is subject to change at anytime. Repayments for the 5-year loan are \$18.42 per \$1,000 for 60 months and \$10.36 per \$1,000 for 120 months for the 10-year loan. Federally insured by NCUA. Equal Housing Lender.

Maine State Credit Union
Doing Business the Maine Way



Lynch

LANDSCAPING INC
FOR THOSE WHO DESIRE QUALITY

207-474-2420

Design - Install - Maintain

Designing landscapes to beautify your property and protect our natural resources - *Installing* these landscapes in a manner that promotes sustainability and prevents erosion - *Maintaining* these landscape so your investment lasts a life time

Licensed, Certified & Accredited
For All Of Your Landscaping Needs

www.lynchlandscaping.com

Belgrade Vacation Rentals

CAMP & COTTAGE RENTALS
Located next to Pete's Pig Barbecue!

Contact Us Today! **(207) 495-4011**
www.BelgradeVacationRentals.com

Own A Property? We Will Rent it for You!

RAILROAD SQUARE CINEMA

Showing the Best of World and American Cinema

17 Railroad Square, Waterville, Maine, 04901

24-hour movie info:
207-873-6526
www.railroadsquarecinema.com

Home of the
Maine International Film Festival
(July 8 - 17, 2016)
www.MIFF.org

COLBY MUSEUM OF ART

A USABLE PAST
American Folk Art at the Colby College Museum of Art
July 9, 2016–January 8, 2017

Colby College Museum of Art, Waterville, Maine
colby.edu/museum 207.859.5600

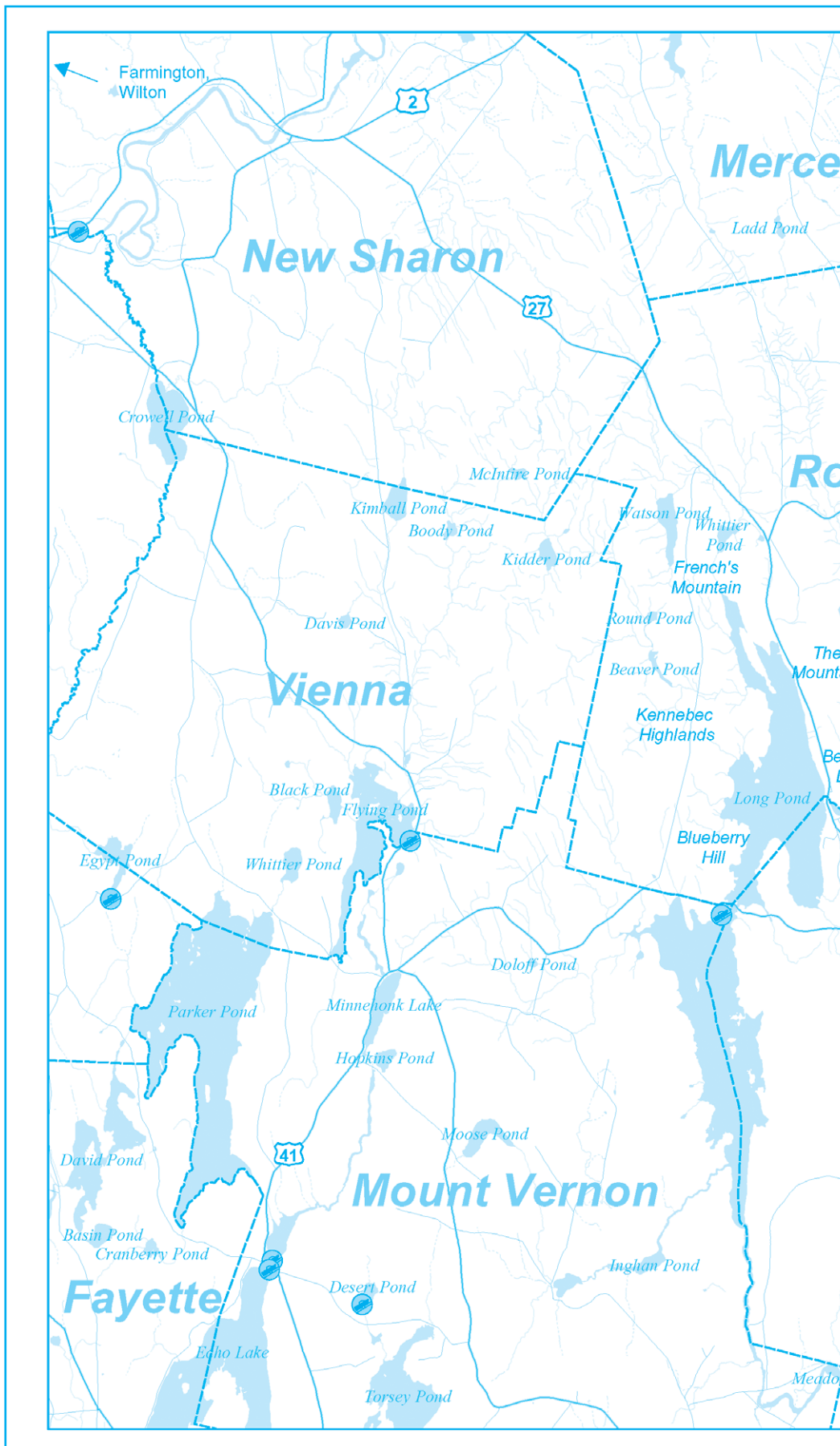
ST. MICHAEL SCHOOL

56 Sewall Street, Augusta, ME 04330
207.623.3491 www.smsmaine.org

NEW Fall 2016... PRE-K for 3 year-olds!

St. Michael School will be opening a new Pre-School Program for 3 year-old children starting in the fall. This Program will have a curriculum, daily schedule and an overall program that is consistent with the mission and values that have been associated with a St. Michael School education. Register your child TODAY!

*A Legacy of Excellence,
a Foundation for the Future.*



EYE CARE OF MAINE

"Your Sight is Our Vision"

- Comprehensive Eye Exams
- Eyewear Center / Contact Lenses
- State of the Art Cataract Surgery
- Retinal Diseases and Glaucoma
- LASIK Refractive Surgery
- Laser Surgery
- Oculoplastic Diseases
- Botox, Juvederm and Latisse

• Ambulatory Surgery Center

www.Maine2020.com

Steve R. Witkin, M.D.

Peter C. Kohler, M.D.

James R. Putnam, M.D.

Marc B. Daniels, M.D.

Helen Bell-Necevski, O.D.

Lorie Lepley Parks, O.D.

Michael C. Parks, O.D.

Ian M. Jones, O.D.

325A Kennedy Memorial Drive
Waterville, Maine 04901

873-2731
(800) 660-3403

RIVERSIDE FARM

RESTAURANT & WINE MARKET

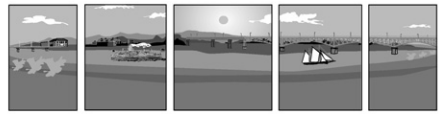
Restaurant Hours:
Brunch
Sundays - 10am-2pm
Lunch
Tuesdays - Saturdays - 11am-2:30pm
Dinner
Thursdays -- Sunday - 5:30pm-8:30pm

Wine Market Hours:
Tuesdays - Fridays - 10am-5:30pm
Saturday - 10am-3pm

291 Fairfield Street
Oakland, ME 04963

For reservations call 207-465-4439

RiversideFarmMarket.com



RIVERFRONT BARBEQUE & GRILLE

WORLD CLASS BARBEQUE

SEAFOOD, PASTA, & VEGETARIAN ENTREES

207.622.8899

300 WATER STREET, AUGUSTA, MAINE

WWW.RIVERFRONTBBQ.COM

FULL SERVICE DINING * CATERING * BULK TAKE OUT



The
Gin Mill
Augusta, Maine

Augusta's finest upscale lounge featuring
fine wine, martinis, and over 100 brands
of beer from Germany to Japan

Thursday thru Saturday 3:00pm until Midnight,
Above the Riverfront Barbeque & Grille
at 300 Water Street
207.620.9200

Lakepoint REAL ESTATE

"Put The Team to Work For You"

207.495.3700

GAIL RIZZO 207-242-8119
gail@gailrizzo.com



PAT DONAHUE 207-730-2331
pdcamp@msn.com



FLYING POND, VIENNA:
4BR/1BA 16x16 screened
porch, lge deck,
boathouse, 2.05 acres,
357' +/- lakefront, near
Mt. Vernon Village. MLS
#1211821 \$339,900



EAST POND, SMITHFIELD:
4BR/4BA Contemporary
on 16+ acres with 920' +/-
lakefront. Many amenities
w/guest cottage 25' from
the lake. #1212172
\$849,000

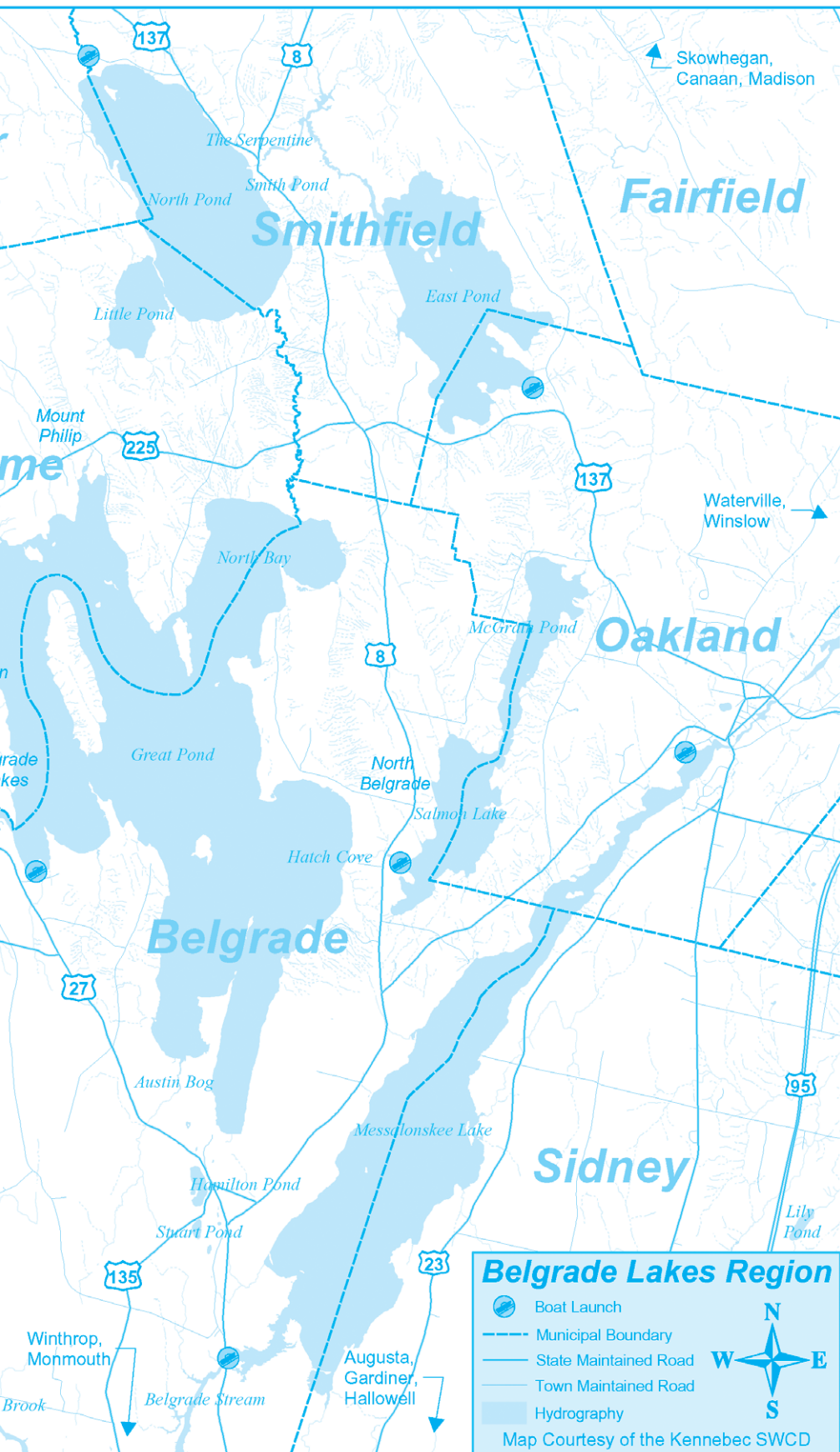


GREAT POND, ROME:
2BR + loft/1 BA Cottage in
waterfront community.
Pvt dock. Close to Mt.
Philip and Kennebec
Highlands hiking trails.
#1219480 \$179,000



**GREAT POND,
BELGRADE:** 150'
Lakefront. 3BR cottage at
water's edge, plus year
round 2BR above 2 car
garage. Sandy swim area,
sunset views. #1262021
\$449,900

221 Main Street, Belgrade Lakes, Maine 04918



Visit the Businesses on Marina Drive



sadiesboathouse@hotmail.com

• 207-495-4045 •

Like us on Facebook!

Open Friday & Saturday

from 5 PM – 9 PM

Family Fun Days BOAT RENTALS



O'Brien Water-Sports Pro Shop

*Don't Be Left
Standing On
The Dock*

**Call for
Reservations:
495-2213**

www.greatpondmarina.com
Belgrade Lakes

Open Every Day 8-5

ShoreStation®

The original since 1959

Why Shore Station?
Docks & Boat Lifts
Dependable, Rugged.

Docks = Stability
A-frame stance handles
a 6,000lb boat

Boat Lifts 1,500 to 15,000 lbs.

Shoreland'r Trailers

Brown Dock Services www.browndockservices.com

George: 495.2600 Jason: 316.7514

Display Docks & Lifts at Great Pond Marina



ShoreStation® The original since 1959

Clark Marine

Manchester - Monmouth - Belgrade

We Service
Honda, Mercury, Evinrude,
and Yamaha Motors

Keeping You On The Water!

207-622-7011

57 Puddledock Rd.

Manchester, Me.



Check-Out Our
New Boats



www.ClarkMarineMaine.com

G & L CONTRACTING

- New Construction
- Additions
- Dock Installations
- Construction

www.gandlcontractingmaine.com

207-495-9009

Lakeside Cottage Rentals



**Exclusive
Lakeside
Rentals in the
Belgrade
Lakes Region**

Located off Rt 27 in Belgrade Lakes

(207) 495-4046

www.LCRentals.com

Waterfront Property Owners

We offer full service rental management services. Please
call if you are interested in having us manage your home.



— Upcoming —

JULY

- On Saturday, July 2, the 17th Annual Black Fly Follies will be presented at 7:30 pm at The Theater At Monmouth. 933-9999
- The Friends of the Cobbossee Watershed will hold the 14th Annual Friends on the 4th 5K - run, jog or walk, starting at Norcross Point in Winthrop at 8 am. 621-4100
- The Maine International Film Festival, featuring 50 filmmakers and over 100 films, will be held on July 8-17 in Waterville. Miff.org
- BRIO will be the featured appearance at the Union Coffeehouse on Saturday, July 9, at 7 pm, followed by open mic. Donations \$5.
- On Wednesday, July 13, the Oakland-Sidney United Methodist Church, West School Street, Oakland will hold its annual July Turkey Supper from 5-7 pm, with roast turkey and all the trimmings and homemade pies. Adults \$5, children 6-12 \$4.
- The Mt. Philip Grange July Monthly Bean Supper will be Saturday, July 16, 4:30-6 pm, Route 25, Rome.
- Farmington Summer Fest, featuring the Great Float Race, a Talent Show and a Bed Race will be held on Friday and

- Saturday, July 22 and 23 in downtown Farmington. 491-5333
- The Annual 5K Road Race to benefit the Belgrade Public Library will be on Saturday, July 30, at 8 am at the Belgrade Central School. 495-3508
 - Skowhegan Fairgrounds will be the site of the annual Kneading Conference on July 28 and 29 and the Artisan Bread Fair on July 30. 276-0545
 - On Saturday, July 30 there will be a Summer Smorgasbord at Waterville’s First Congregational Church, corner of Eustis Parkway and Main Street, 5-6:30 pm, with baked beans, casseroles, salads, bread, beverages and summery desserts or an ice cream sundae bar. Adults \$8, children 5-12 \$4. 872-8976
 - Jazz Under the Stars at the Bowl-In-The-Pines at New England Music Camp on Saturday, July 30, featuring the Al Corey Band. 7:30 pm, ticketed event. 465-3739

AUGUST

- On Tuesday, August 2, River Fest begins in Skowhegan including Moonlight Madness, the Rotary Lobster Bake and many events on and near the Kennebec River. 474-3621
- The Taste of Greater Waterville, sponsored by the Mid-Maine Chamber of Commerce, will be held on Wednesday, August 3, 9 am-11 pm in downtown Waterville. 873-3315

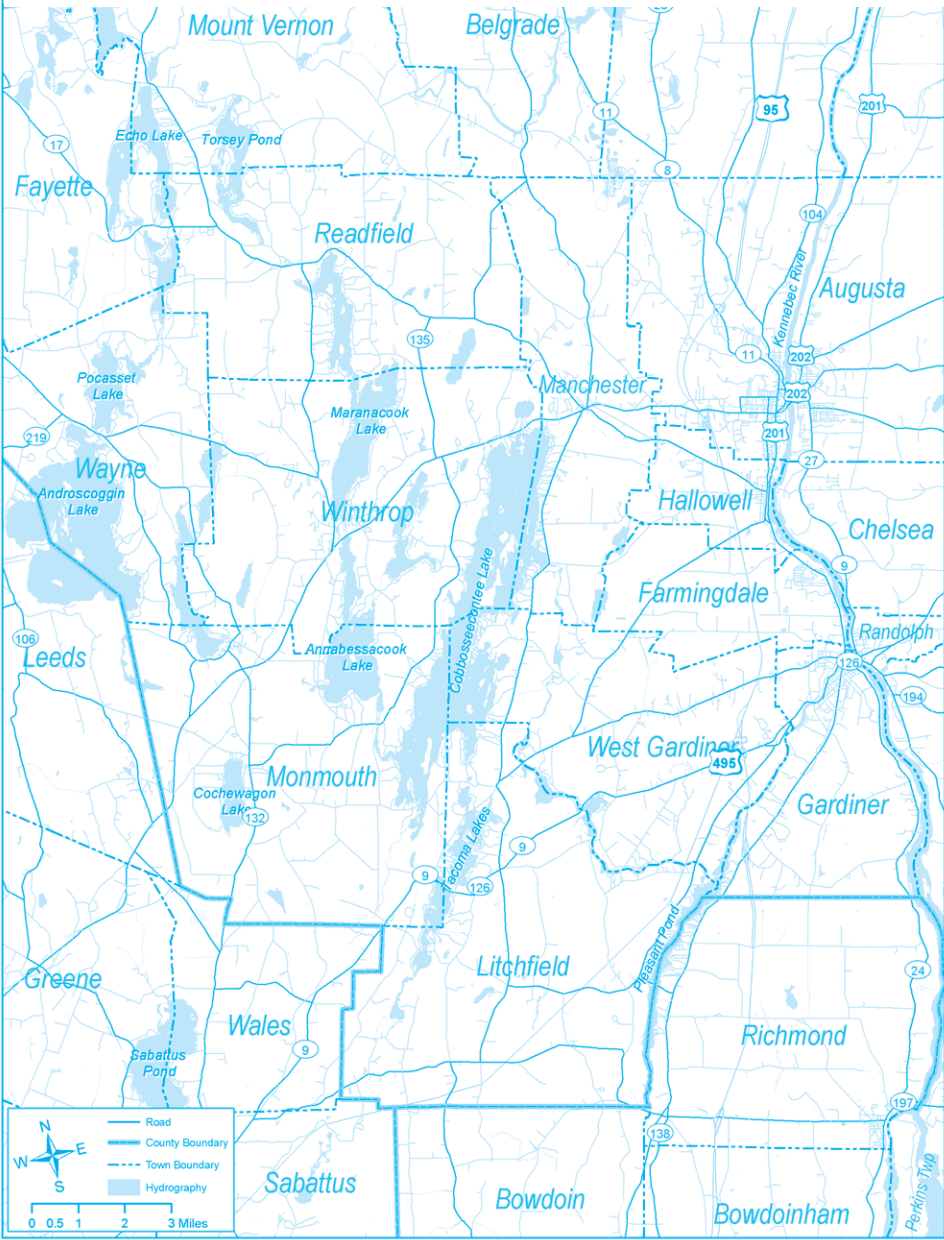
- Thursday, August 18 is Children's Day at the Araxine Wilkins Sawyer Foundation. "The Headless Horseman," with the Frogtown Puppeteers. Children must be accompanied by an adult; 2 pm only. Free. 946-5311
- Belgrade Lakeside Artisan Show will be held Sunday, August 7, 9 am-3 pm at the Belgrade Community Center for All Seasons. 495-3481
- The Oakland Alumni Annual Banquet buffet luncheon will be held on Saturday, August 13 at the Waterville Elks Lodge, starting at 10:30 am, for all past graduates of Oakland, Williams and Messalonskee High Schools. 465-2849
- The 199th Skowhegan State Fair runs from August 11-20. www.skowheganstatefair.com
- The August Blistered Fingers Family Bluegrass Music Festival will be the 24-27 at the Litchfield Fairgrounds. Children 16 and under free with adult. 873-6539

SEPTEMBER

- The 4th Annual Somerset Sports & Fitness Sprint Triathlon will be held Sunday, September 11 at Lake George and the Fitness Center. www.lakegeorgesft-triathlon.webs.com
- The Common Ground Country Fair, sponsored by the Maine Organic Farmers and Gardeners Association, will be September 23-25 in Unity. Gates open at 9 am. 568-4142

www.sumbelnews.com

Cobbossee Watershed



BEDSIDE MANOR

ALZHEIMER'S CARE FACILITY



Providing a quality of care that is second to none



MAKING EVERY DAY SPECIAL

- 24-Hour Alzheimer's and Dementia Care
- Respite Care (based on availability)
- Adult Day Service (based on availability)
- Private, Secure, Non-institutional
- Creative Activities
- Occasional Outings
- Salon Service
- Compassionate Staff

461 Belgrade Road, Oakland, ME 04963
(207) 465-2527
210 Country Club Road, Oakland, ME 04963
(207) 465-8382

Find Us On Facebook

www.bedsidemanorcare.com



-Conservation Too- Stormwater Runoff – Avoid a Disaster

By Dale Finseth

This year we have been short of rain. ...and we certainly have NOT had one of those massive rain storms. It is unlikely to remain that way all season. Other parts of the country have not been so lucky. So..., be prepared by addressing problems now.

We have talked about stormwater runoff before. "Stormwater" is just that – the rainfall or other precipitation that then runs across the landscape in liquid form. The ditch next to your driveway will have a lot of water in it during and soon after a rainstorm. The culvert beneath your driveway will run full. But, what's the big deal? The pond level may rise a bit and waves might lap against the shoreline. Isn't that just nature doing what nature does? Nature sometimes does more than usual, and that is the part we need to prepare for.

Like anything else in our life, if we anticipate it and make informed decisions, we can affect its impact. In the case of a rainstorm, we can design our landscape and manage our property in a manner so that the rainwater's impact on water quality is mod-



This is what poorly managed "stormwater" can do.

erated. Where we put our roadways, buildings, lawns, patios and other structures affects how the water runs across the landscape. We have all seen how the stormwater flow can generate erosion and silt as it heads towards the nearby wetland, stream or pond. Designers and engineers as well as municipal officials, road managers and the Maine DEP refer to this as "stormwater control". It may be an overstatement to assume "control", but how we place and

manage our structures on the landscape can mitigate their impact on water quality.

Let's start with some numbers :-). We measure rainfall as so many "inches of rain". Given that most of us measure liquids in gallons or liters, it's hard to translate what an inch of rain is.

One inch of rain on a single square foot of pavement, sidewalk or roof = 0.6234 gallons of water.

If you have a parking area or a building that is near the shoreline, all the rain falling on that surface is diverted to the lowest point and then leaves that surface into a concentrated runoff area. How much water gets focused to that area? If you have a 25' x 40' building or parking area, you have 1,000 square feet of impervious area. A square foot is 144 square inches. One inch of rain on that surface translates into 625 gallons of water. Now consider your property. How much impervious surface do you have? An impervious surface doesn't soak up the rain but carries it off to another location. For every inch of rain that falls on those surfaces, your property needs to deal with ten's of thousands of gallons of water. And that is only one inch of rain. What happens when you get 6-8 inches of rain? Depending upon how your structures are designed, that additional water is all being directed towards a few specific points on your property. That concentration of water can do a lot of damage.

What can a property owner do in order to mitigate the damage? Plan for it! Direct runoff into vegetated areas or rain gardens. Design drip edge areas where the runoff leaves your roof. Maintain your driveway and parking so the water sheets off the edges and into areas that will not erode when the concentrated runoff occurs. Be prepared. Take the opportunity now to use some of those BMP's [Best Management Practices]. Focus on how to manage your yard and property. Control the water runoff. Look for places that have been damaged in past storms. It will happen again unless you do something.

A good buffer planting if well established, does a good job of intercepting water runoff and filtering it before it gets to the lake. The objective is to filter it so it doesn't concentrate and transport soil, chemicals, or other toxics into the water.

Remember, there is a lot to do in order to protect water quality.

For information about any of our conservation projects please contact Dale Finseth at 622-7847, x 3 or check our website at www.kcsacd.org

"Central Maine's Biggest Road Race" Returns for the 14th Year in a Row!

Come join the Friends of the Cobbossee Watershed on the 4th of July for their 14th Annual "Friends on the 4th" 5K Run/Jog/Walk! The race will be held Monday, July 4, 2016 at 8:00 a.m. in Winthrop, Maine along the beautiful eastern shore of Lake Maranacook.

Pre-registration is \$22 and open until 10:00 a.m. on Friday, July 1st, 2016 guaranteeing participants a free t-shirt sporting the Friend's "Spotter the Otter" race logo and a stuffed gift bag! Event day registration is \$25 with no guarantee of a free t-shirt and gift bag. Registration will begin at 7:00 a.m. at the American Legion on Bowdoin Street in Winthrop. Stick around after the race for the awards ceremony



ny and free raffle with a list of wonderful prizes!

FMI or to download a registration form or register online, visit www.watershedfriends.com or call the Friend's office at 621-4100



Visit Us for All Your Local Foods!

LAKESIDE ORCHARDS AND FARM MARKET

Fresh Veggies • Bakery • Milk • Eggs • Beer • Wine & More

Open Monday-Friday 9-5 • Saturday 9-4

318 Readfield Rd. (Rt. 17), Manchester

207 622 2479

Specializing In

CAMP JACKING AND LEVELING

John Webster
32 Webster Way
Belgrade, ME 04917

Sill Replacement
Retaining Walls

(207) 495-2965
35+ Years Experience

GENERATORS of MAINE

495-2285

Doug Sawyer, Owner
Cell: 207-215-0617
doug@generatorsofmaine.com
www.generatorsofmaine.com
262 Augusta Road • Belgrade, Maine

KOHLER Generators
Authorized Dealer

Call Us For Boat Tops, Covers & Interiors

Protect the Interior
Repairs & Alterations
Welcome!

Keep You and Your Boat Clean & Dry

Pontoon Boats Too!

WATERVILLE UPHOLSTERY & CANVAS
(watervilleupholstery@outlook.com)

1 1/2 Miles West Exit 127, I-95, KMD, Oakland
465-7847

VISA MasterCard

Bear Spring Camps

- Waterfront cottages
- Home-style meals
- Bass, pike, and brown-trout fishing
- Boats, motors, docks
- Sandy beach
- 3.5 hours from Boston
- May-September

on Great Pond in the
Belgrade Lakes Region
www.bearspringcamps.com
207-397-2341



BELGRADE REGIONAL HEALTH CENTER

*New Patients
of All Ages
Welcome*

4 Clement Way, Belgrade
207-495-3323 | BelgradeCHC.org

ALDEN CAMPS
Est. 1911

- Lobster Bakes on Friday nights by Reservation
- Lakeside Cottages • Boats & Motors
- Full American Plan
- Dining on the Porch by reservation Saturday through Wednesday

3 Alden Camps Cove
Oakland, Me 04963
(207-465-7703)

E-mail: info@aldencamps.com • Website: www.aldencamps.com

CHILDREN'S BOOK CELLAR

BOOKS, PUZZLES, TOYS, GAMES

A store for children of all ages, the young and the young at heart.

Open Monday 12 to 5 • Tues. - Sat. 9 to 5
52 Main St. Waterville 872-4543

DAVID STEVENS
Excavation & Septic Systems

LOAM GRAVEL SAND
465-3815
Cell: 314-0314
P.O. Box 146 • Belgrade, Maine 04917

CASTLE ISLAND CAMPS

Boats, Bait, Tackle, Gas, Kayaks

Boats, Daily or Weekly
495-3312
Rentals for Long Pond Only

David J. Auclair
www.auclaircycle.com

AUCLAIR CYCLE & SKI

64-66 BANGOR ST. AUGUSTA, ME 04330
623-4351 / 800-734-7171 • Fast Professional Service
Bicycles • Skateboards • Roof Racks • Rentals

The Jewelry Enthusiast's Jeweler.

L. TARDIF JEWELER
62 Main Street Waterville, Me.

Tues - Sat
est. 1935
9 - 5

Accommodations

Alden Camps, lakeside cottages on East Pond, established 1911, American Plan meals, boat and motor rentals, dining and lobster bake open to public by reservation, 3 Alden Camps Cove, Oakland, 465-7703, www.aldencamps.com

Bear Spring Camps, waterfront cottages on Great Pond, home-style meals, sandy beach, boats, motors, docks, 60 Jamaica Point Road, Rome, 397-2341, www.bearspringcamps.com

Castle Island Camps, cottages on the water, Long Pond, American Plan meals, boat and kayak rentals, Castle Island Road, Belgrade Lakes, 495-3312, www.castleislandcamps.com

Whisperwood Cottages, overlooking Salmon Lake, American Plan

meals, fishing boat rentals, open to the public for dining by reservation only, 103 Taylor Woods Road, North Belgrade, 465-3983, www.whisperwoodlodge.com

Wings Hill Inn, historic Inn & Restaurant, casually elegant accommodations, centrally located in Belgrade Lakes Village, Route 27, Belgrade Lakes, 495-2400, 866-495-2400, www.wingshillinn.com

Belgrade Vacation Rentals, lakeside camp and cottage rentals throughout the area, long and short stays, many size accommodations and rates, 81 Main Street, downtown Belgrade Lakes, 495-4011, www.belgradevacationrentals.com

Lakeside Cottage Rentals, featuring over 70 private homes, 24/7 customer friendly service, 25 Marina Drive, Belgrade Lakes, 592-5577, 495-4046, www.lcrentals.com



Notebook

Waterville Country Club

• The Waterville Country Club in Oakland welcomes everyone in the community to join its 100th Anniversary events July 6-9. Nightly entertainment and \$19.16 guest greens fees will also be offered all week. Events include: Wednesday, July 6, "Old 9" Tournament, WCC Trivia Night at the Club House; Thursday, July 7, Open House tours, Lobster & Clam Bake \$19.16 pp; Friday, July 8, Alfred's Famous Pig Roast \$19.16 per couple, enjoy the sounds of "The House Band"; Saturday, July 9, Centennial Tourney, 100th Anniversary banquet, dance to live music from The Dapper Gents. info@watervillecountryclub.com, Office 465-2838, tee times 465-9861; food reservations 465-7774

Augusta

• The City of Augusta's Bicentennial Nature Park for Augusta City residents and guests is open for the season. Hours of operation are 11 am-7 pm seven days a week. There is a nominal charge to Augusta families and individuals. Season pass and daily admission information is available at the Park office or at Buker Community Center. Available are swimming, picnicking, hiking, fishing, beautiful scenery and wildlife, including loons and ospreys on the lake. The park's entrance is located on Route 3, 1/2 mile east of the Weeks Mills Road. 626-2350, 620-7010

Hinkley

• On Wednesday, June 29 at 7 pm, the LC. Bates Museum will present a free illustrated talk by Hemingway scholar Dr. Susan F. Beegel entitled Voyage To Ernest Hemingway's The Old Man and the Sea. Beegel's talk will examine the marine life in the book and the history of the museum's 12-foot long Blue Marlin which was caught in 1935 in Bimini by Hemingway and mounted by well-known taxidermist Fred C. N. Parke of Bangor. Prior to the talk, at 6 pm, visit the museum to see the marlin. There will be a family/children's hunt through the exhibition for marine life in Hemingway's book. At 2 pm on Monday, June 27 conservator Ron Harvey of Tuckerbrook Conservation will explain his process for preserving the marlin. 238-4250

Mount Vernon

• The 6th Annual Classic Meets Pop Concert and Fireworks featuring award winning NPR From the Top Alumni Musicians will be hosted at the Mount Vernon Community Center, Sunday, July 3 at 7:30 pm. Five award winning and internationally celebrated classical musicians will present an exciting

concert of classical and pop music. Tickets are \$10/adult, \$5/child for indoor general admission seating. Reservations are strongly recommended as indoor seating is limited - email Dan Onion dkonion@gmail.com or 293-2076. Guests are also encouraged to bring blankets or chairs and sit on the lawn for free. Fireworks will follow the concert at 9:15 pm. The concert will benefit the 30-Mile River Watershed Association and the Parker Pond Association. <http://www.30mileriver.org/> or <http://www.parkerpond.org/>

Readfield

• RSU 38 Maranacook Adult Education has a new course lineup for Summer 2016:

- JUNE
- Lakers' Track Club - ages 6-15; June 20-August 13
 - Boys' Black Bear Basketball Camp, grades 4-8; June 20-23
 - Lady Black Bears Basketball, grades 4-8; June 27-29
- JULY
- Boys & Girls Soccer Camp, grades 3-8; July 11-15
 - Field Hockey Clinic, grades 4-8; July 25-28

AUGUST

- Little Kickers Soccer Camp, ages 5-8; August 15-18

To register with a debit/credit care visit <http://maranacook.maineadulted.org> 685-4923, x 1065

Sidney

• Snow Pond Center for the Arts kicks off its 2016 Summer Music Series with the Snow Pond Symphony Orchestra's inaugural performance on Sunday, June 26 at 3 pm at the Bowl in The Pines amphitheater under the Music Direction of Maestro Leon Gregorian. Snow Pond faculty member and former member of Orpheus Chamber Orchestra, Jo-Ann Sternberg, will solo on the Mozart Clarinet Concerto in A Major. Classical program selections include: The Mozart Clarinet Concerto in A Major, Leonard Bernstein's Overture to Candide, and Nikolai Rimsky Korsakov's Capriccio Espagnole. Pops selections include music from Star Wars, West Side Story, The Music Man, and a Salute to O' Blue Eyes. Tickets are \$20 adults, \$10 students at SnowPond.org. 1-844-476-6976

Vienna

• On Tuesday, July 5 at 7:30 pm, the Village Harmony Youth World Music Ensemble will perform at the Union Hall in Vienna. The group includes 25 teen singers from around the country, who will sing traditional songs and choral arrangements from South America, Lithuania and Corsica, American songs, sea chanties, lullabies, songs for social change and several original compositions by the directors. \$10 suggested, \$5 for students and seniors. 495-2928

Continued on page 15...



Dining

Augusta

• **Riverfront Barbeque & Grille and Gin Mill Lounge**, world class barbeque, seafood, pasta and vegetarian entrees, full service dining, catering, bulk take out, 300 Water Street, Augusta, www.riverfrontbbq.com, 622-8899

Belgrade

- **Pete's Pig**, 81 Main Street, sandwiches and platters for picnic-style eating on the premises or to go, also offering a full range of catering, Main Street, Belgrade Lakes Village, 495-4095, www.petespig.com
- **Sadie's Boathouse Restaurant at Great Pond Marina**, hearty contemporary American fare, 25 Marina Drive, Belgrade Lakes, 495-4045, 242-1273
- **The Village Inn and Tavern**, 157 Main Street, Route 27, Belgrade Lakes Village, 495-3553, www.villageinnandtavern.com
- **Whisperwood Lodge and Cottages**, Salmon Lake/McGrath Pond, homestyle cooking, traditional fishing camp diningroom, open to the public by reservation only, 103 Taylor Woods Road, Belgrade, 465-3983, www.whisperwoodlodge.com
- **Wings Hill Inn and Restaurant**, gourmet fine dining in historic inn, daily culinary chef's specialties, Route 27/Main Street,

Belgrade Lakes Village, www.wingshillinn.com, 495-2400 or 800-495-2400,

• **Winterberry Farm Café**, homemade treats, pie, cookies, granola bars, grilled organic cheese sandwiches, veggies, drinks, Route 27, Belgrade, 649-3331

Manchester

• **Lakeside Orchards**, bakery, veggies, dairy products, drinks, 318 Readfield Road, Route 17, Manchester, 622-2479

Oakland

- **Alden Camps**, lunch or dinner by reservation Saturday-Wednesday space permitting, lobster bakes on Friday night by reservation, 3 Alden Camps Cove, Oakland, www.aldencamps.com, 465-7703
- **Riverside Farm Restaurant & Wine Market**, simple, wholesome food and drink since 1990, 291 Fairfield Street, Oakland, www.riversidefarmmarket.com, 465-4439

Oakland-Wines & Spirits

• **Tree Spirits**, tasting room for award winning wines and spirits made from local apples, pears and maple syrup, tours available, 152 Fairfield Street, Oakland, www.treespiritsofmaine.com

Smithfield

• **Smithfield Ice Cream Place**, lunch, dinner and dessert, 855 Village Road, smithfieldicecreamplace.com, 368-5039

Grilling is Great, But...

Safety tips and a warning from the Belgrade Fire & Rescue Department:

As summer and grilling season are here, we urge you to practice safe grilling. According to the NFPA an average of 8,800 home fires are started each year from grilling and in 2012 18,900 people want to emergency rooms from injuries resulting from grilling accidents. Some basic grilling safety tips are:

- Keep pets and children away from grill at all times.
- Clean out excess grease, debris, and fat off grill surface and catch trays.
- Inspect all gas grills for gas leaks in hoses & fittings. This can be done by using a soapy water solu-

....Continued from page 14

Waterville

• The Waterville Opera House announces WOH Presents, a new multimedia, immersive concert experience starting this summer. The first concert of WOH Presents will be on Saturday, July 2 in partnership with The Great North music and arts festival as an official "Road to Great North" event. The concert will feature performances by Viral Sound, Chromatropic and Merther, as well as live painting by Ryan Kohler

157 Main Street/RT 27
Belgrade Lakes, Maine 04918
villageinnandtavern@gmail.com
207.495.3553
www.villageinnandtavern.com

THE VILLAGE INN AND TAVERN
Belgrade Lakes, Maine
SINCE 1921

CROOKED ISLAND SAILING
LESSONS-RENTALS-DELIVERIES

207-495-9066

tion and checking for air bubbles. If any leaks are found do not use the grill.

- Keep all grills outside, away from any combustible materials, away from buildings, off decks, and away from any overhanging structures.

- Always keep the lid of the grill open when igniting.

- Never leave grill unattended.

Help support the Belgrade Fire & Rescue association by contributing to the toll booth in front of the Belgrade Lakes fire station on July 4th and by attending the Car Show on July 26 at Belgrade Central School and the Beanhole Supper on August 1 at the Center for All Seasons in Belgrade Lakes.

Winthrop

• Camp Mechuwana will hold its First Annual Golf Tournament on Saturday, August 6 at Springbrook Golf Course in Leeds with a 1 pm shotgun start, rain or shine. The tournament is open to all golfers and all proceeds will go toward Mechuwana's scholarship program. Sponsorships for each hole are available. The camp will be hosting an annual Open House/ Alumni Day starting at 1 pm with tours of the facilities, swimming, boating, arts and crafts and more. The day will end with dinner for all guests and golfers at 5:30 pm. Register at www.mechuwana.org

Fayette - David Pond - Immaculate custom 4 bedroom/3 bath lake-front Ranch with walkout basement on tranquil and pristine David Pond. Open floor plan with hardwood floors, Anderson windows, Cherry cabinets, granite and stainless kitchen, radiant heat, ductless A/C, security system, 12 kva generator, oversized garage, screen porch, 3.8 acres, 201' frontage. **\$473,000**. Adjoining 3.1 waterfront lot also available for only **\$125,000**.

Call Brian Rizzo at Rizzo Mattson, Realtors
COLDWELL BANKER

219 Capitol St., Augusta 622-9000 ~ 215-9793
brizzo@rizzomattson.com

Fishing Boat Rentals on Salmon Lake & McGrath Pond
All boats shown on our website
Now open to the Public for Dining by reservation only. **465-3983**
Breakfast 8:am - 9:am, Dinner served at 5:pm
Daily menu listed on our website
Boat docking available for Lake Residents
www.whisperwoodlodge.com

WINTERBERRY FARM STAND.COM
Route 27, Belgrade
207.649.3331

KIDS FARM CAMP
Offering two one week sessions - 8:30-4pm daily
June 27th - July 1st & July 25th - 29th
Ages 5-11 \$200.00

Belgrade's working family farm
FARMSTORE & CAFÉ
Open 7 days a week, 9am - 6pm
Featuring all-organic products grown and produced here on the farm.
3 miles south of Belgrade Lakes Village on route 27.

F. A. Rizzo Appraisal Company
Frank Rizzo
Consultant/Appraiser
Estate Appraisal & Planning
Certified Residential cr709
tel. (207) 495-3365
cell (207) 458-4916
farizzo@roadrunner.com

Since 1992

Pete's Pig CATERING & BARBEQUE

Now Booking for 2017

- Corporate Functions
- Weddings & Rehearsals
- Special Events

Call (877) 860-1503
(207) 495-4095
www.petespig.com

Maple Leaf Self Storage
Belgrade Me - 3.3 mi off Rte 27 on Route 135
495-2191

Various size units
Owners live on site

Boat / Auto Storage
By foot or unit

The Ice Cream Place
855 Village Road, Smithfield, ME
Across from the Post Office
362-5039 • Open 11am-9pm
smithfieldicecreamplace.com

Ice Cream
Sub Rolls
Pizza
Lobster Rolls
Accessible by Boat from East Pond



-Business Directory-

ACCOMMODATIONS

See page 18

ART

Colby College Museum of Art, 5600 Mayflower Hill, Waterville, 859-4000, www.colby.edu/museum/

BANKING

Kennebec Savings Bank, 150 State Street, Augusta, 622-5801, www.kennebecsavings.com

Maine State Credit Union, 200 Capitol Street, Augusta, 623-1851, www.maine-statecu.org

Skowhegan Savings Bank, 450 Civic Center Drive, Route 27, Augusta, 1-800-303-9511, 623-2300, www.skowsavings.com

BEVERAGES

Tree Spirits, 152 Fairfield St, Oakland, 861-2723, www.treespiritsofmaine.com

BICYCLES

Auclair Cycle & Ski, 64 Bangor St, Augusta, 623-4351, www.auclaircycle.com

BOAT COVERS

Waterville Upholstery & Canvas, 1042 Kennedy Memorial Dr, Oakland, 465-7847, www.watervilleupholstery.com

BOAT LIFTS

Brown Dock Service, Marina Drive, Route 27, Belgrade Lakes, 495-2600, 316-7514, www.browndockservices.com

Hammond Lumber Company, Auburn, Bangor, Belgrade, Boothbay Harbor, Brunswick, Damariscotta, Fairfield, Farmington, Greenville, Pemaquid, Portland, Skowhegan, Wilton, 1 866-HAMMOND, www.hammondlumber.com

BOAT MOORINGS

Great Pond Marina, 25 Marina Drive, Route 27, Belgrade Lakes, 495-2213, www.greatpondmarina.com

BOAT RENTALS

Castle Island Camps, Long Pond, 441 Castle Island Road, Belgrade Lakes, 495-3312, www.castleislandcamps.com

Great Pond Marina, 25 Marina Drive, Route 27, Belgrade Lakes, 495-2213, www.greatpondmarina.com

Whisperwood Cottages, Salmon Lake/McGrath Pond, 103 Taylor Woods Road, Belgrade, 465-3983, www.whisperwoodlodge.com

BOAT SALES AND SERVICES

Clark Marine, 57 Puddledock Road, Manchester, 622-7011, mail@clarkmarine.biz, funonthewaterstartshere.com

Hamlin's Marine, 290 West River Road, Waterville, 872-5660, www.hamlinsmarine.com

Mid-Maine Marine and RV, 885 Kennedy Memorial Drive, Oakland, 465-2146, www.midmainemarine.com

BOAT STORAGE

Belgrade Boat Storage, 31 Pinkham's Cove Road, Belgrade, 495-3421, 314-3287, www.belgradeboatstorage.com

Belgrade Lakes Marine and Storage, Inc, 366 Augusta Road, Belgrade, 495-2378, www.belgradelakesmarine.com

Clark Marine, 57 Puddledock Road, Manchester, 622-7011; and Route 202, Monmouth, mail@clarkmarine.biz, funonthewaterstartshere.com

Hamlin's Marine, 290 West River Road, Waterville, 872-5660, www.hamlinsmarine.com

Maple Leaf Self Storage, 688 Manchester Road, Route 135, Belgrade, 495-2191, 441-5529

Mid-Maine Marine, 885 Kennedy Memorial Drive, Oakland, 465-2146, www.midmainemarine.com

BOOKS

Children's Book Cellar, 52 Main Street, Waterville, 872-4543, childrensbookcellar.com

BUILDERS

Craig's Carpentry/North Bay Estates, Route 8, North Belgrade, Craig Alexander, 649-3749

G&L Contracting, 116 Lakeshore Drive, Belgrade Lakes, 215-7951, 495-2325, 233-7408, gandlcontractingmaine.com

LakeHouse Design, Build, Renovations, 17 Birchwood Road, Augusta, 242-3663, www.lakehousedesignbuild.com

John Webster, jacking, raising, 32 Webster Way, Belgrade, 495-2965

BUILDING MATERIALS

Hammond Lumber Company, Auburn, Bangor, Belgrade, Boothbay Harbor, Brunswick, Damariscotta, Fairfield, Farmington, Greenville, Pemaquid, Portland, Skowhegan, Wilton, 866-HAMMOND, www.hammondlumber.com

COMPUTER CONSULTANTS

Macintosh Solutions, Michael Breault, 24 Welch Road, Wilton, 645-5083, cell 578-0226, mo.breault@michael-breault.net, www.michaelbreault.net

DEMENTIA/ALZHEIMER'S CARE

Bedside Manor, Alzheimer's Care Facility, 461 Belgrade Road and 210 Country Club Road, Oakland, 465-2527, 465-8382, www.bedsidemanorcare.com

DINING

See Directory on page 15

DOCKS

Brown's Dock Services at Great Pond Marina, 495-2600, 316-7514, www.browndockservices.com

G&L Contracting, 116 Lakeshore Drive, Belgrade Lakes, 495-2325, 215-7951, 233-7408, gandlcontractingmaine.com

Hammond Lumber Company, Auburn, Bangor,

Belgrade, Boothbay Harbor, Brunswick, Damariscotta, Fairfield, Farmington, Greenville, Pemaquid, Portland, Skowhegan, Wilton, 866-HAMMOND, www.hammondlumber.com

ELDER CARE

Maine-ly Elder Care, 28 Center Street, Oakland, 465-3249, www.maine-lyeldercare.com

ENGINEERING

Thayer Engineering, septic design, storm water mitigation, permitting, 17 Hasson Street, Farmingdale, 582-7762, www.thayereng.com

ESTATE APPRAISALS

F.A. Rizzo Appraisal Company, estate appraisal and planning, 495-3365, 458-4916, farizzo@roadrunner.com

EXCAVATING

Belgrade Boat Storage, 31 Pinkham's Cove Road, Belgrade, 495-3421, 314-3287, belgradeboatrentals.com
David Stevens, P0 Box 146, Belgrade, 465-3815, cell 314-0314

EYE CARE

Eye Care of Maine, 325 E. Kennedy Memorial Drive, Waterville, 873-2731, 1-800-660-3403, www.Maine2020.com

FARMSTANDS

Lakeside Orchards, 318 Readfield Road, Route 17, Manchester, 622-2479

Winterberry Farm, 538 Augusta Road, Route 27, Belgrade, 495-2593, 649-3331, www.winterberryfarmstand.com

FINANCIAL PLANNING

Golden Pond Wealth Management, 129 Silver Street, Waterville, 873-2200, www.goldenpondwealth.com

FIREWOOD

J & M Logging, Inc. 853 Civic Center Drive, Augusta, 622-6353, www.jmlogginginc.com

FLOORING

HAMMOND LUMBER COMPANY, Auburn, Bangor, Belgrade, Boothbay, Brunswick, Damariscotta, Fairfield, Farmington, Greenville, Pemaquid, Portland, Skowhegan, Wilton, 866-HAMMOND, www.hammondlumber.com

GENERATORS

Generators of Maine, 262 Augusta Road, Belgrade, 495-2285, www.generatorsofmaine.com

GOLF

Natanis Golf Course. 735 Webber Pond Road, Vassalboro, 622-3561, www.natanisgc.com

HEALTH CENTERS

Belgrade Regional Health Center, 4 Clement Way,



Belgrade Lakes, 495-3323, www.healthreachchc.org/belgradechc.org

Inland Hospital, 200 Kennedy Memorial Drive, Waterville, 861-3000, 1-800-491-8600, www.inlandhospital.org

MaineGeneral Medical Center, Alfond Center for Health, 35 Medical Center Parkway, Augusta; Thayer Center for Health, 149 North Street, Waterville, 1-855-4463, www.maine-general.org

ICE CREAM

Smithfield Ice Cream Place, 855 Village Road, smithfieldicecreamplace.com, 368-5039

JEWELRY

Larsen’s Jewelers, 57 Main Street, Waterville, 872-6301, 1-800-697-1874, www.larsensjewelers.com
L.Tardif Jeweler, 62 Main Street, Waterville, 872-7542, 1-800-834-3638, ltardifjewelers.com

KITCHENS

Hammond Lumber Company, Auburn, Bangor, Belgrade, Boothbay, Brunswick, Damariscotta, Fairfield, Farmington, Greenville, Pemaquid, Portland, Skowhegan, Wilton, 866-HAMMOND, www.hammondlumber.com

LAKE ASSOCIATIONS

Belgrade Lakes Association (BLA), Long Pond and Great Pond, PO Box 551, 137 Main Street, Belgrade Lakes, 512-5150, belgradelakesassociation.org

LANDSCAPING

G&L Contracting, Belgrade Lakes, 215-7951, 495-2325, 233-7408, gandlcontractingmaine.com
Lynch Landscaping, Skowhegan, 474-2420, lynchlandscaping.com

MOVIE THEATERS

Railroad Square Cinema, call for titles and times, 17 Railroad Square, Waterville, 873-6526, www.railroadsquarecinema.com

MUSEUMS

Colby College Museum of Art, 5600 Mayflower Hill, Waterville, 859-5600, www.colby.edu/museum/

MUSIC/CONCERTS

Snow Pond Center For The Arts and New England Music Camp, 8 Goldenrod Lane, Sidney, 844-476-6976, www.snowpond.org

ORCHARDS

Lakeside Orchards and Farm Market, 318 Readfield Road, Route 17, Manchester, 622-2479

PHYSICAL THERAPY

Dockside Physical Therapy, 47 Main Street, Belgrade Lakes, 495-3195, 512-2544, Fax 512-2545

PIANO ENJOYMENT

Diane Gorman, 906 Manchester Road, Belgrade, 495-3222

PLUMBING

Paul Hanna's Plumbing, Belgrade, 495-3805

REAL ESTATE DEVELOPMENTS

North Bay Estates, Belgrade, 649-3749, crgsnbe@yahoo.com

REAL ESTATE

Coldwell Banker Rizzo Mattson, 219 Capitol Street, Augusta, 622-9000, www.rizzomattson.com
Day's Real Estate, 262 Augusta Road, Route 27, Belgrade Lakes, 495-3111, 1-888-495-3111, www.daysrealestate.com
Lakepoint Real Estate, 221 Main Street, Belgrade Lakes, 495-3700, www.belgradelakepoint.com
Sprague & Curtis Real Estate, 75 Western Avenue, Augusta, 623-1123, www.spragueandcurtis.com

LODGING RESERVATIONS

See page 14

RESTAURANTS

See Dining Directory on page 15

RETIREMENT COMMUNITIES

Granite Hill Estates, 60 Balsam Drive, Hallowell, 626-7786, 1-888-321-1119, www.granitehillestates.com

SAILING

Crooked Island Sailing, lessons, rentals, deliveries, Peter McManus, Belgrade Lakes, 495-9066,

SCHOOLS

St. Michael School, grades pre-K 3-year-old through 8th, 56 Sewell Street, Augusta, 623-3491, www.smsmaine.org
Snow Pond Arts Academy, 8 Goldenrod Lane, Sidney, 844-476-6976, www.snowpond.org

SECURITY SYSTEMS

Cayer Security Services, Inc, 208 College Avenue, Waterville, 453-9177, www.cayersecurity.com

SELF STORAGE

Maple Leaf Self Storage, 688 Manchester Road., Route 135, Belgrade, 495-2191

SURVEYING

Acme Land Surveying, 108 Fairbanks Road, Suite 5, Farmington, 778-4081, www.acmelandsurveying.com

WINDOWS

Hammond Lumber Company. Auburn, Bangor, Belgrade, Boothbay, Brunswick, Damariscotta, Fairfield, Farmington, Greenville, Pemaquid, Portland, Skowhegan, Wilton, 1-866-HAMMOND, www.hammondlumber.com

ASSOCIATIONS/GROUPS

THE BELGRADES...

- **East Pond Association**, Smithfield/Oakland, www.eastpond.org
- **North Pond Association**, Smithfield/Rome/Mercer, www.northpond.net
- **McGrath Pond/Salmon Lake Association (MPSL)**, Belgrade/Oakland, P.O. Box 2800, Oakland, 04963, 873-5285, www.mcgrathpond-salmonlake.org
- **Belgrade Lakes Association (BLA) for Great Pond and Long Pond**, Belgrade/Rome/Mount Vernon, PO Box 551, 137 Main Street, Belgrade Lakes, 04918, 512-5150, www.belgradelakesassociation.org
- **Friends of Messalonskee**, Oakland/Belgrade/Sidney, PO Box 532, Oakland, 04963, 465-4622, www.friendsofmessalonskee.com
- **Belgrade Regional Conservation Alliance and BRCA Conservation Corps**, PO Box 250, 137 Main Street, Belgrade Lakes, 04918, 495-6039, www.belgradelakes.org
- **Belgrade Lakes Region Business Group (BLRBG)**, PO Box 596, Belgrade Lakes, 04918, 495-3700, www.belgradelakesmaine.com
- **Maine Lakes Resource Center/Docks to Doorways**, PO Box 431, 137 Main Street, Belgrade Lakes, 04918, 495-3617, 620-6029, www.mainelakesresourcecenter.org

BEYOND...

- **Friends of the Cobbossee Watershed**, PO Box 5003, Augusta, 04332-5003, 621-4100, www.watershed-friends.com
- **Franklin County Soil & Water Conservation District**, 107 Park Street, Farmington 04938, 778-4279, www.franklincswcd.org
- **Kennebec County Soil & Water Conservation District**, 21 Enterprise Drive, Augusta 04330, 622-7847, ext. 3, www.kcswcd.org
- **Somerset County Soil & Water Conservation District**, 12 High Street, Skowhegan 04976, 474-8324, www.somersetswcd.org
- **Kennebec Land Trust (KLT)**, PO Box 261, 331 Main Street, Winthrop, 04364, 377-2848, www.tkltr.org
- **Kennebec Messalonskee Trails**, PO Box 2388, Waterville, 04903, 873-6443, www.kmtrails.org
- **Kennebec River Rail Trail**, PO Box 2195, Augusta, 04338, 623-8162, www.krrt.org
- **30 Mile River Watershed Association (30 MRWA)**, Kimball Pond in Vienna to the Androscoggin River, PO Box 132, Mt Vernon, 04352, 685-4956, www.30mileriver.org
- **Maine Lakes Society**, formerly Congress of Lake Associations, PO Box 447, 137 Main Street, Belgrade Lakes, 04918, 1-855-463-2652
- **Central Maine chapter of the New England Mountain Bike Association (CeMeNEMBA)**, 441-6227, www.cemenemba.org





Expressions

"Innovations: Contemporary Art" on View at Maine Fiberarts

A juried show of contemporary art is on exhibit at Maine Fiberarts in Topsham, June 10-September 3, 2016. The exhibit includes hooked work, woven tapestry, knitted wire, collaged fabric, paper assemblage, handwoven rugs, mixed media, needlepoint tapestry, felted work and embroidery and includes 30.

A reception will be held on Sunday, July 10, 2-5 pm, free of charge. The public is invited to attend. Many of the artists will be on hand to answer questions. Throughout the exhibition, knowledgeable staff and volunteers will be available.

Founded in 2000, statewide nonprofit Maine Fiberarts hosts a networking center at 13 Maine Street, Topsham that promotes the work of Maine artists, craftspeople, fiber farmers and entrepreneurs. Gallery hours are Wednesday-Friday 11 am-4 pm, Saturday 11 am-2 pm. The groups also hosts the Maine Fiberarts Digital Tour, workshops, special events and gatherings. www.maineiberarts.org; 721-0678.



Crafts, Strawberries and a Historical Setting at Norlands



A Strawberry Festival, Craft Fair and Living History Heritage Day will be held on Saturday, June 25 at the Washburn-Norlands Living History Center in Livermore from 11 am-4 pm. The Festival features a craft fair with artisans demonstrating handmade crafts and selling original artwork.

Step back into the 19th century for a day of crafts, heritage and fun. Meet craft vendors and demonstrators from around the state. Watch historic farmer "Edward Pratt" as he hand crafts wooden shingles (shakes). Children's craft activities

will include making kites, bean bags and handkerchief dolls to take home...

The Jay/Livermore Falls Lions Club will serve up hamburgers and hot dogs - or bring a picnic. Strawberry shortcake made with home-baked biscuits, local strawberries and real whipped cream will be on sale.

Admission to the craft fair is free. Regular admission applies to all other activities, which include tours, demonstrations, programs by costumed interpreters. www.norlands.org; 897-4366



This Week's LakeSmart Tip EROSION-CONTROL MULCH



Handful of ECM



Buffer path

Erosion Control Mulch absorbs nutrients from water, stabilizes slopes, and enriches soil. It is heavier and "chunkier" than landscape mulch to better retain moisture and control weeds. Use it on paths, bare spots where vegetation won't grow, or between plants.

For a free installation contact: Nathan Durant, Youth Conservation Corps Director, bracc@mainelakes.org
Logan Parker, LAKESMART Coordinator,
lparker.maineilakes@gmail.com
Maine Lakes Resource Center 207-495-3617

**Sprague
& Curtis**
Real Estate

spragueandcurtis.com

6 2 3 . 1 1 2 3

75 Western Ave. • Augusta, ME



AUGUSTA-TOGUS POND — Quiet cove setting w/over 300' of water frontage. Westerly views. Spacious 2-3 BR, 2 BA. Lg flat lot, easy water access. Mostly finished lower level rec room w/kitchenette, door to the front yard water. Oversized 1 car garage, metal roof, vinyl siding, bst storage, workshop, more. Convenient to Augusta, I-95, new Regional Hospital and the Market Place. **MLS 1260419 \$225,000**



FAYETTE-NEW LISTING - PARKER POND — Sandy frontage, water's edge deck, dock. Open design cottage w/2 loft BR. Lg front deck, 100' of quality frontage. Out building/bunk house. Sits close to the water, quiet cove setting. All this on fabulous 1500 acre Parker Pond with islands, coves and peninsulas. Convenient to Augusta, Farmington, or Lewiston/Auburn. **MLS 1266796 \$189,900**



LITCHFIELD- SAND POND — Contemporary Cape offers panoramic water views & 386' of frontage. Wrap around cedar deck, lower level walkout FR w/bath. Enjoy the clean Tacoma Lakes, & boat from Woodbury Pond to Sand to Buker. 3BR, 3BA, updated kitchen with granite & porcelain tile. Generator hookup, woodstove, lots of storage & oversize garage for your boat. Aluminum dock system. **MLS 1253339 \$419,900**



AUGUSTA-PRICE REDUCED-THREE CORNER POND — Beautiful 2,700 sq ft home, 3 BR, 2 BA w/2 car grg. Great room w/cathedral ceiling, tile floors, stone hearth & wood stove. Open concept dining & kitchen w/hickory cabinets, granite tile countertops & access to the deck. The 1st fl floor BR is steps away from a bath w/custom tile shower, Jacuzzi tub & granite counters. Newly finished daylight basement w/laundry & BR. **MLS 1219872 \$309,900**



FAYETTE-PRICE REDUCED-LOVEJOY POND — Wonderful sandy beach with 100' of frontage. Lg private lot (0.83 AC). Aluminum dock, fire pit, patio, gazebo. 1990 Contemp. w/cathedral ceiling & water views. Lg front deck. 3BR, 2BA, lower level FR w/woodstove & enclosed porch! Many updates. Income property in separate building over garage-2BR, 1BA, separate heating system. Yr round access. **MLS 1239771 \$329,900**



LITCHFIELD- PLEASANT POND — Spectacular custom built home. Top of the line kitchen w/tray ceilings, arched doorways, LR w/propane fireplace, master suite w/sitting room and elegant bath. Sun-room overlooks the water. Two garages, beautiful landscaping and dock on your own waterfront. Fish, swim or just relax at the lake. **MLS 1259483 \$699,900**



CHINA- CHINA LAKE — Beautiful 3 BR, 2 BA home, 200' water frontage. 2007 open concept ranch w/kitchen/DR/LR w/cathedral ceiling. Master BR w/separate bath. Finished office space & plumbing set up for additional bathroom in the walk-out basement. Lg deck, breathtaking westerly views. **MLS 127899 \$325,000**



LITCHFIELD- BUKER POND — Older mobile home, 2 car garage & shared access to Buker Pond. 2 BR, 1 BA on 0.8 acre lot. Property has a septic system, private water supply. Paved dead-end road town maintained. Shared lot has 77' water frontage & is in walking distance. This is a fantastic opportunity to fix up the mobile or build your new year-round or vacation home! **MLS 1256141 \$45,000**



SIDNEY — Beautiful, spacious, 3BR, 2.5BA, 2005 Colonial, lots of extras in tax friendly Sidney ell landscaped setting. Open, sunny interior, LR w/gas fireplace, sliding door opens to rear deck. Hardwood floors, 1st floor laundry. Large master suite & 2BR up, plus nice FR done in ship lap pine. Heated basement, automatic generator, fruit trees, great location & so much more. **MLS 1263617 \$259,900**



Business

Food Pantry Receives Grant to Supply Fresh Produce

The Smithfield Food Pantry has received a \$3,500 grant from Western Mountains Fund of the Maine Community Foundation to aid in the cost of installation of a hood ventilation system for the gas stove in the Municipal Complex kitchen. This will bring more locally grown produce to low-income and elderly town residents.

"This grant will help many people who struggle to feed their families," said Nicky Clarke, administrative assistant and pantry manager. "It will help eliminate waste of any produce grown

in the Smithfield Community Garden by allowing the abundance of produce to be canned and/or frozen for later use. Use of the 6 burner gas stove will allow us to preserve and distribute the produce into the winter months." She added, the cost of the project is about \$6,000; donations made out to the Town of Smithfield may be mailed to: Attn: Nicky Clarke, Pantry Fund, 926 Village Road, Smithfield, ME 04978.

According to Jodie Mosher-Towle, who wrote the grant, "One in 4 families in Maine is food

insecure and we are hoping to provide produce to supplement what families bring home with nutritious, fresh picked food by preserving what we can't distribute at harvest for later use." She added, "Any amount of donation is acceptable."

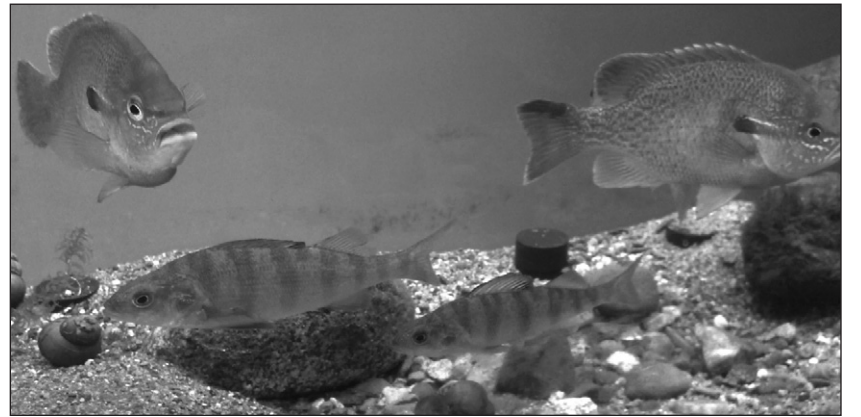
With offices in Ellsworth and Portland, the Maine Community Foundation works with donors and other partners to improve the quality of life for all Maine people. To learn more about the foundation, visit www.maineecg.org.

...continued from page 5

mit from IFW to stock our tanks, including a display permit for a mud puppy in a separate tank. These tanks have become a huge attraction for visitors to the MLRC, especially the kids of all ages (including some collecting social security). During the farmers' market last weekend, one girl of about 9 spent an hour in front of the tanks writing down "discriptions" (sic) of the fish in a journal. Possibly a budding ichthyologist in the making. Stop in to the MLRC to check out our new displays. During my collections I caught a 4-inch landlocked alewife, which I had never caught on rod and reel before. This fish is the primary forage fish in Long Pond that is eaten by our bass, trout, pike, and salmon. I also spent about 10 minutes playing a roughly 8-pound pike near the Great Pond boat launch from the Maine Lakes Society's 30-ft pontoon boat, the

Melinda Ann. It finally wrapped my 2 pound test line around a mooring and took off with the tiny jig I was using for yellow perch.

On Sunday, June 26th, at 2 PM, Mel Croft and I will be leading a hike on BRCA's Mountain property to show how the Belgrade Lakes region has changed over the past 200 million years. Mel will discuss how plate tectonics and various ice ages sculpted the basic landscape over the past 199.985 million years. I will then talk a bit about how the bare rocks and lakes containing lifeless, melted ice water evolved in the past 15,000 years or so since the last ice age to become the forested landscape and lakes teeming with life that we have today. This is always



Yellow perch and Red-breasted sunfish in tank at the MLRC

a popular hike so please call the BRCA office at 495-6039 to register so we can call you if there are any schedule changes. Check their web site at www.belgradelakes.org for the latest schedule. In the meantime, take a kid fishing or on a hike, or paddling in a canoe.

The Great Pond Yacht Club announces the

2016 Youth Sailing Program



When: July 25-July 29th, 2016
Aug. 1- Aug 5th, 2016
Aug. 8-Aug 12th, 2016
Aug. 15-Aug. 19th, 2016

Where: Center for All Seasons Shore

The Great Pond Yacht Club, in partnership with SailMaine is launching their 3rd youth sailing program on Great Pond again this summer. 2015 was a huge success for all of these young sailors! Families are not required to be members of the GPYC for their kids to attend.

Morning and afternoon classes are available in one-week-long sessions in July and August. Tuition is an affordable \$175/wk and scholarships are available so everyone can participate.

To learn more about the program, visit SailMaine's website: <http://www.sailmaine.org>.



SNOW POND
CENTER FOR THE ARTS
2016 SUMMER MUSIC SERIES

SNOW POND SYMPHONY
Leon Gregorian, Music Director
Jo-Ann Sternberg, Guest Soloist - Clarinet
June 26, 3:00 pm, Bowl in the Pines

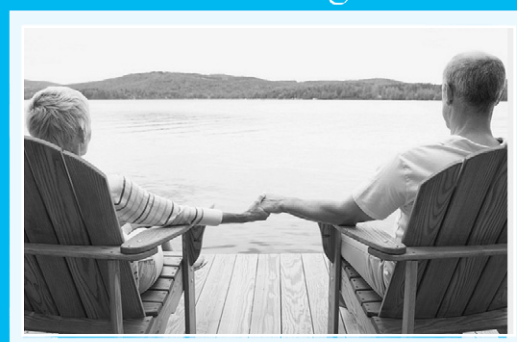


Tickets and information
available at www.snowpond.org
8 Goldenrod Lane, Sidney, Maine 04330 844-476-6976



"The Golden Age is before us, not behind us"
...William Shakespeare

Whether you are 55 or 85 our mission is the same...
grow and protect your family's treasure for your
'Golden Age'



129 Silver St, Waterville, ME
Phone: (207) 873-2200
www.goldenpondwealth.com

Securities offered through LPL Financial, Member FINRA/SIPC



Your own little island of

FUN

**LARGEST
SHOREMASTER
DISTRIBUTOR
in the
COUNTRY**

Improve your lake shore living experience with a **SHOREMASTER SWIM RAFT**. Kids and adults alike will enjoy years of fun and treasured memories.

We Cover The Waterfront.

SHOREMASTER

SWIM RAFTS

90" x 114" Poly Swim Raft – Poly Deck - Yellow or Gray	\$1,129
8'x8' Aluminum Swim Raft Cedar Deck	\$1,589
8'x8' Aluminum Swim Raft Aluminum Deck	\$2,029
8'x8' Aluminum Swim Raft White Aluminum	\$2,099
Rip Raft – Tan or Orange	\$849

Ladder sold separately

3 step pivot ladder	\$269
4 step pivot ladder	\$329
5 step pivot ladder	\$369
Nylon Rope Ladder (Rip Raft only)	\$57
2 step Rip Raft Ladder	\$215

Toll-free 1-866-HAMMOND

Hammond Lumber Company

Visit us online at www.hammond-shoremaster.com for a 82-page Product Planning Guide & Price List.

AUBURN • BANGOR • BELGRADE • BOOTHBAY HARBOR • BRUNSWICK • DAMARISCOTTA
FAIRFIELD • FARMINGTON • GREENVILLE • PEMAQUID • PORTLAND • SKOWHEGAN • WILTON

Lakepoint

REAL ESTATE

207.495.3700

221 Main St.,
Belgrade Lakes, ME 04918

www.belgradelakepoint.com



GREAT POND, BELGRADE: Sunset views steps from water's edge, decks, patio, outdoor 1 bar/kit/pizza oven, swim area, docks. #1238891 **\$295,000**



GREAT POND, BELGRADE: Currently living in yr-rd w/ 1.24 acres, 2 story boathouse, 24x30 insulated, heated gar/workshop. Excellent value! #1221295 **\$260,000**



SALMON LAKE, BELGRADE: 2 BR plus bonus room, 52' lakefront, well maintained perfect Maine Camp Get-away. Just steps to water. #1258125 **\$184,900**



WHITTIER POND, VIENNA: Year round access. 48.5 acres. 955' waterfront. Driveway is in and electricity is nearby. Enjoy true peace and quiet. #1260659 **\$275,000**



BELGRADE: 16.93 acres on town road. Rock wall at roadside, soils tested, surveyed. Wonderful bldg. lot with plenty of privacy. #1160962 **\$59,000**



GREAT POND, ROME: Cottage, guest cottage, two boat houses, wrap around porch, sunsets, swimming area 12 acres, 299' waterfront. #1057136 **\$769,000**



GREAT POND, BELGRADE: 2 BR + Loft, lge bath, screened porch, cust kit, pvt dock in waterfront community w/1400' on 6 acres. #1095281 **\$292,500**



BELGRADE: 3BR/2BA Cape, LR, Dining Area w/deck, lge Kitchen, mudroom, 1.01 acres, short dist to town beaches and 2 boat launch areas. #1146951 **\$169,900**



PARKER POND, CHESTERVILLE: 50' lakefront. 3BR, 1BA Cape. Kit w/nook, pvt living room w/ deck. 2 brick hearths and more. Scenic views. #1261917 **\$235,000**

GRANITE HILL ESTATES

MARTHA BALLARD
ASSISTED LIVING

Part of:
MaineGeneral Health

Retire your way. Today!

In a community that cares.

Now's the time to join the family at **Granite Hill Estates**, central Maine's premiere continuing care retirement community and part of **MaineGeneral Health**. Call 207-626-7786 or toll free 1-888-321-1119 today to schedule a tour. Offering an impressive menu of amenities:

- Spacious cottage homes and apartments
- Elegant full-service dining plan
- Maintenance and housekeeping services
- Scheduled courtesy transportation
- Social, cultural and educational programs
- Indoor pool complete with hot tub
- Cozy reading room, library and bank
- Attractive game, billiard, and meeting rooms
- Fitness center with an on-site fitness coordinator
- Convenient hair salon, massage spa and meditation room
- Wooded walking trails throughout our 135 acre campus

Awarded
Highest Honors
for
Resident
Satisfaction

Holleran National
Senior Living Survey



email: info@granitehillestates.com

60 Balsam Drive, Hallowell, ME 04347

207-626-7786

1-888-321-1119

granitehillestates.com



in a GREAT PLACE



For 146 years we have helped make Kennebec County a great place to work, live and play.

Kennebec Savings Bank

Where banking is easy.

Augusta | Waterville | Farmingdale | Winthrop

www.kennebecsavings.com

