

Workforce Conditions for Veterans in Maine

Glenn Mills
Chief Economist
Center for Workforce Research
Maine Dept. of Labor
glenn.mills@maine.gov
207-621-5192

May 7, 2013

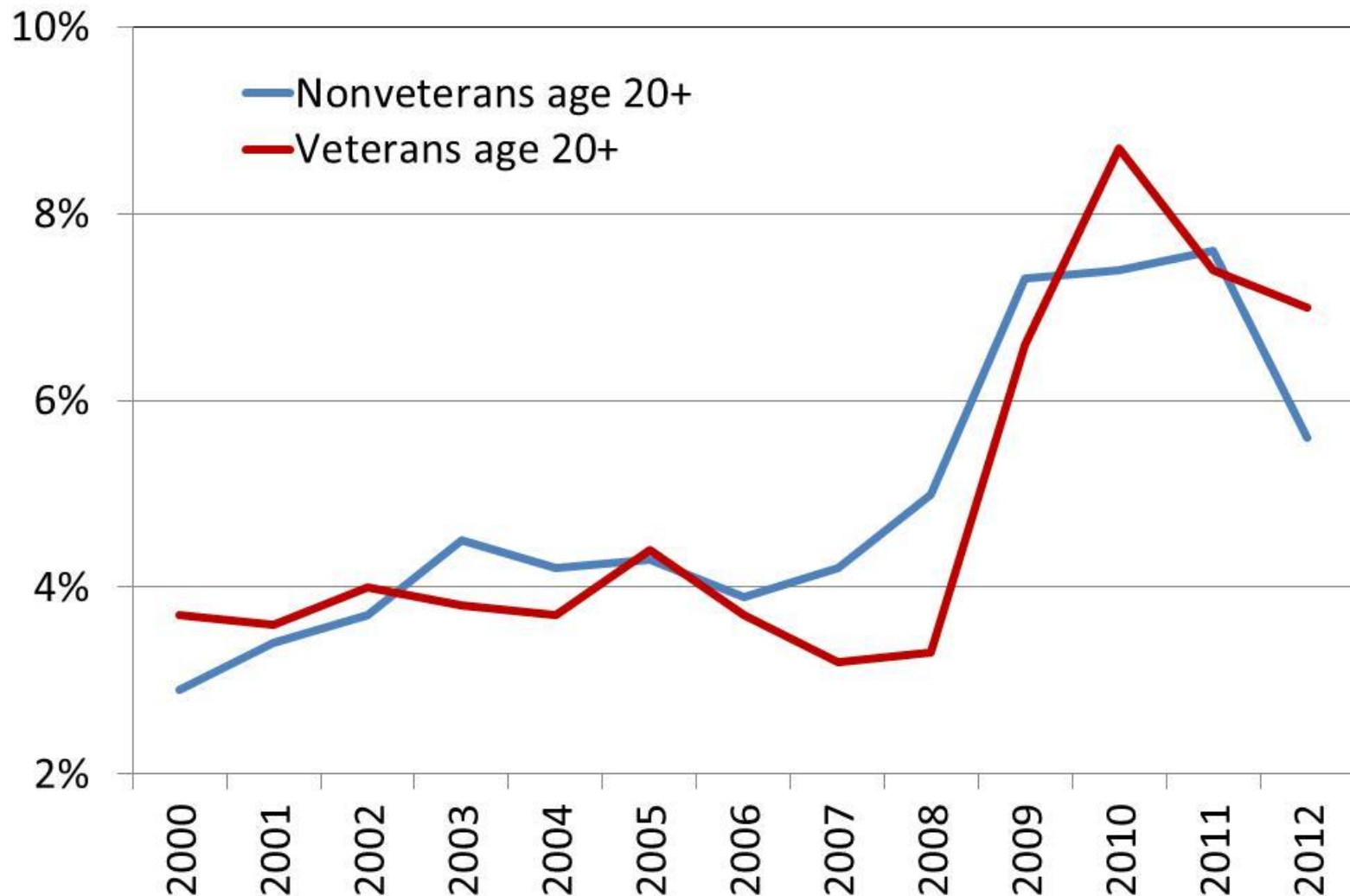
Unemployment and labor force participation rates differ among demographic groups, which is important to consider when comparing workforce conditions for veterans and nonveterans. Veterans are:

- 94% male
- Older than the general adult population
- More likely to have a disability that prevents them from working (those not looking for work are not counted as unemployed — they are not in the labor force).

Maine has a lot of Veterans:

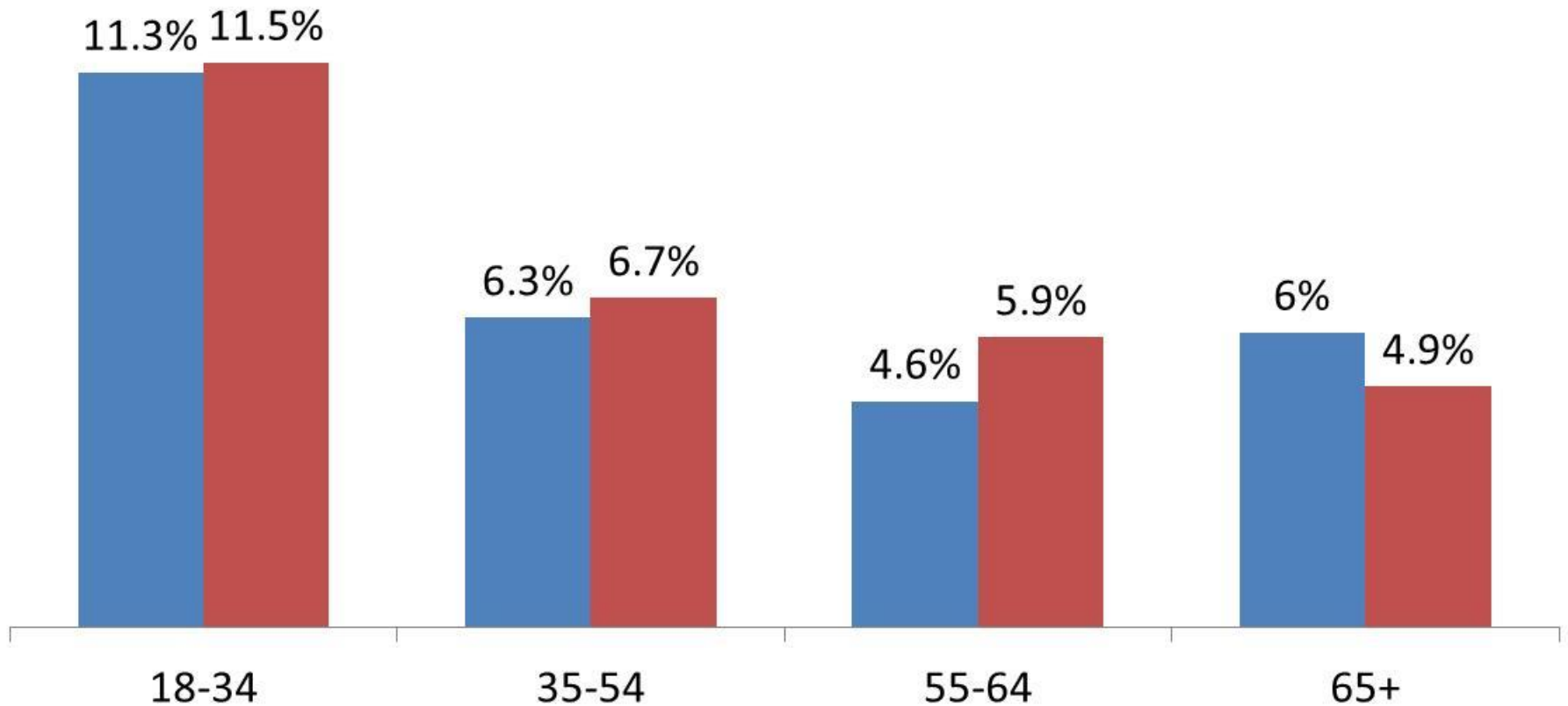
- 131,000...13% of the age 20+ population, which is the fourth highest rate in the nation.

Unemployment rates have started to trend lower, but remain elevated

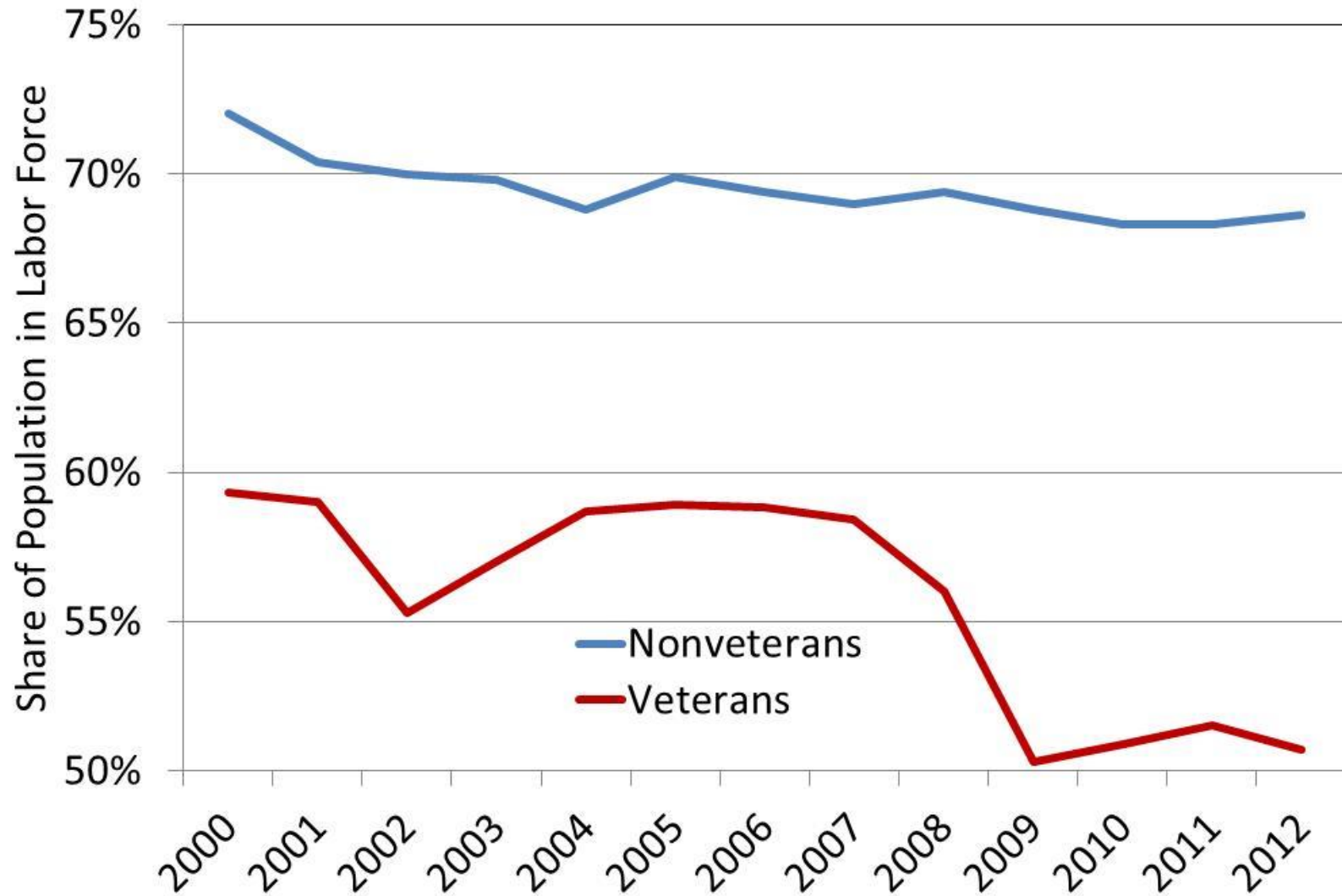


Unemployment rates are highest for younger workers in Maine, veteran and nonveteran (2009-2011 averages)

■ Nonveteran ■ Veteran

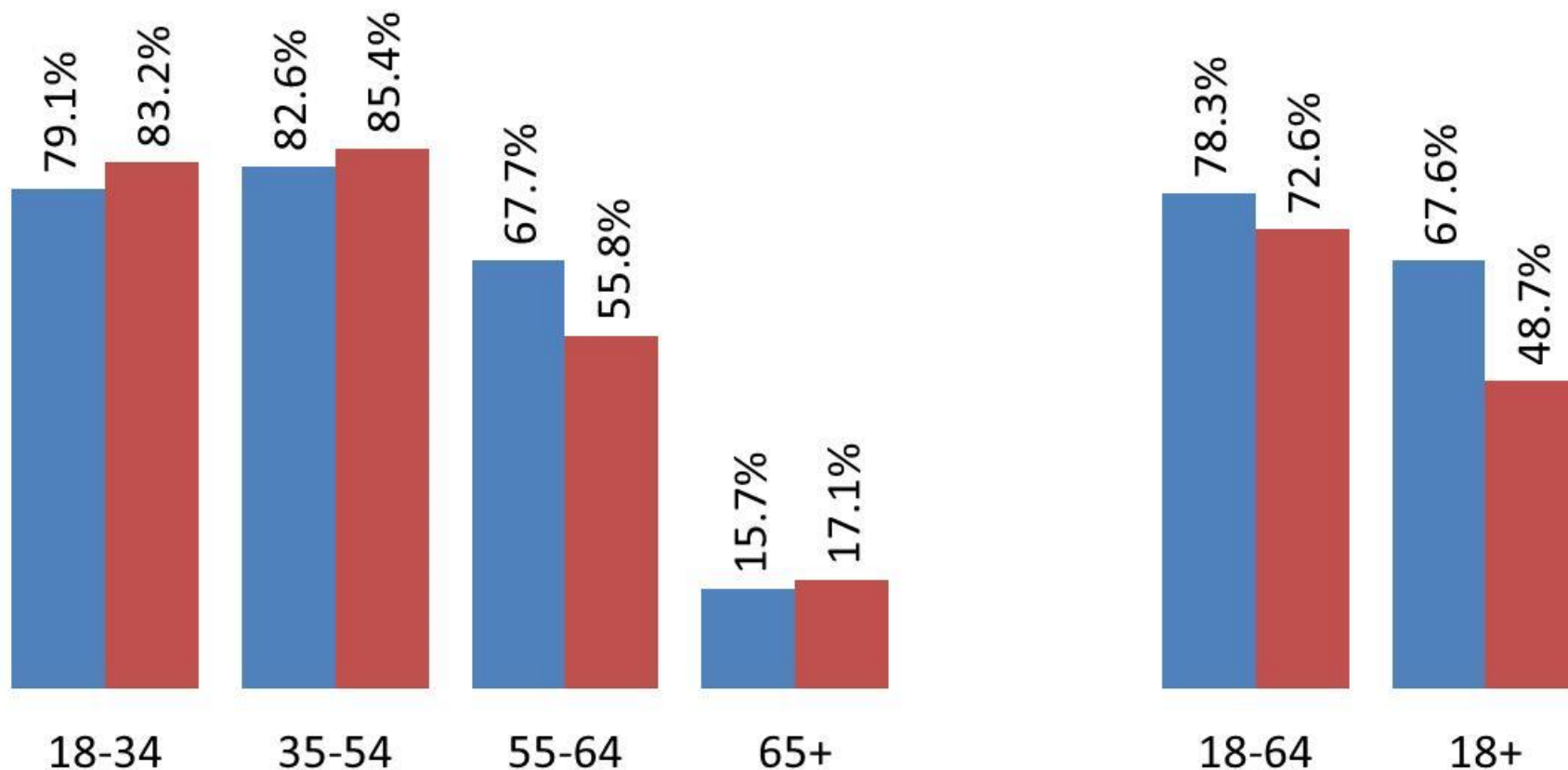


The average labor force participation rate for veterans is lower than for nonveterans...

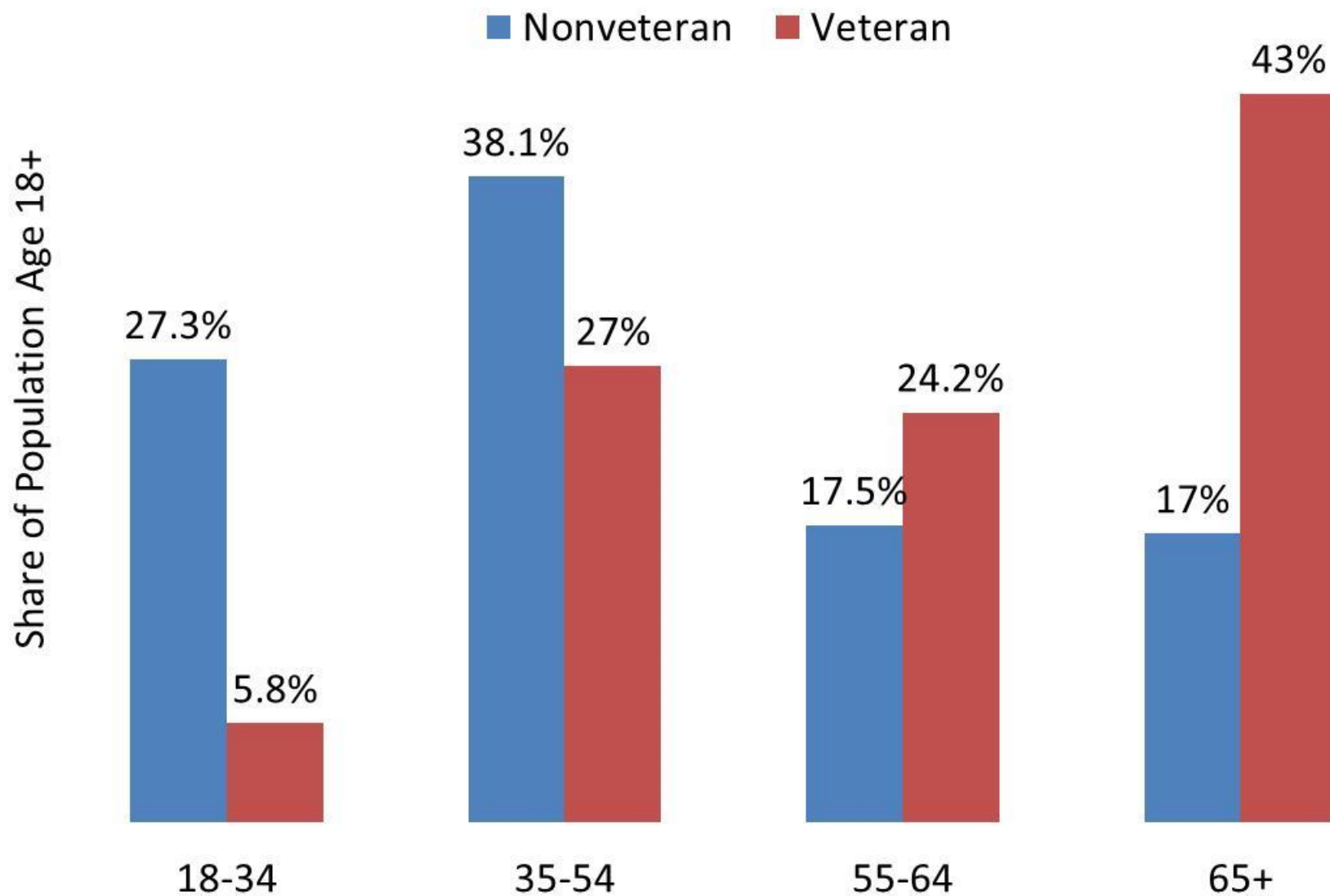


...but only among those nearing typical retirement age...

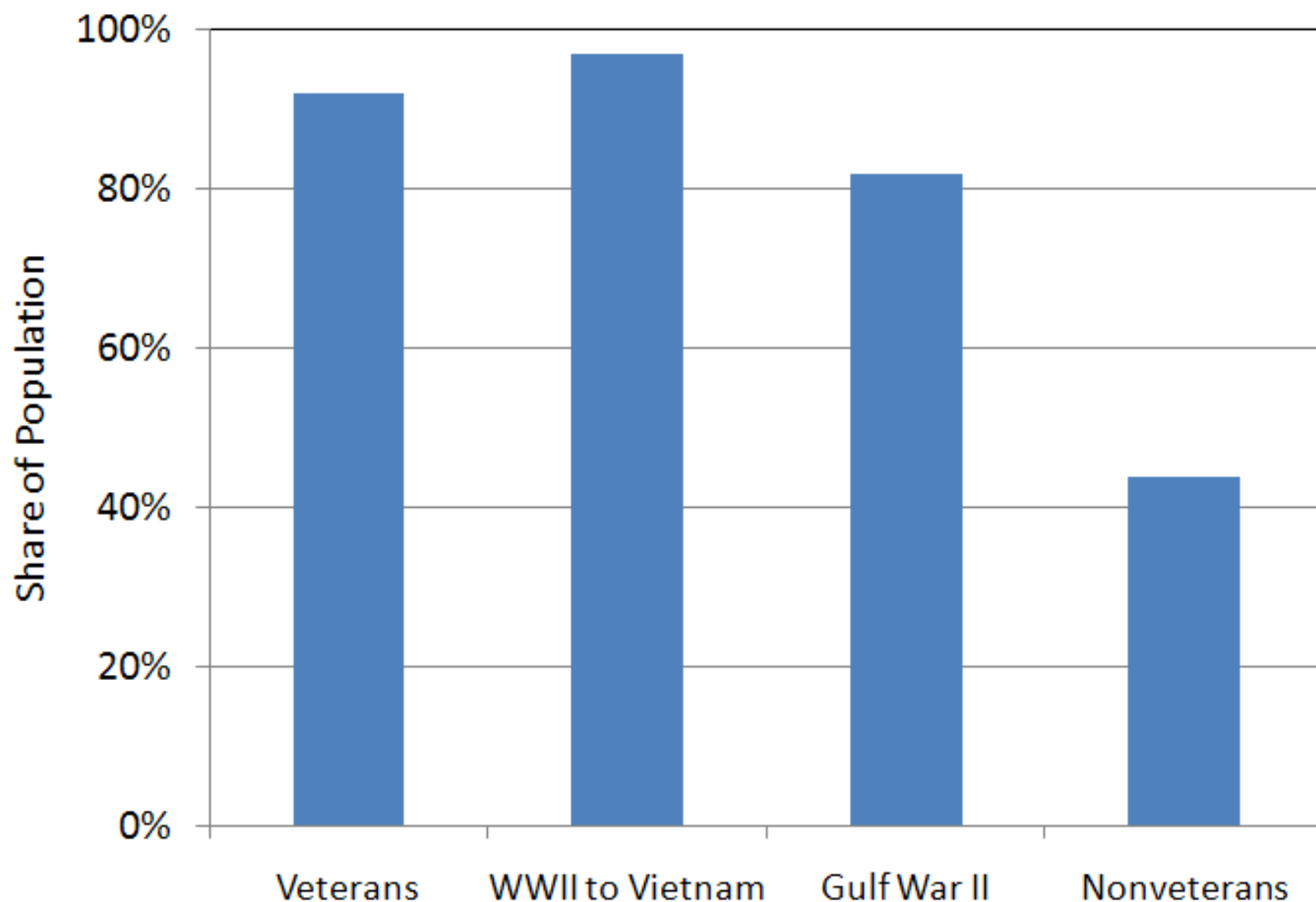
■ Nonveterans ■ Veterans



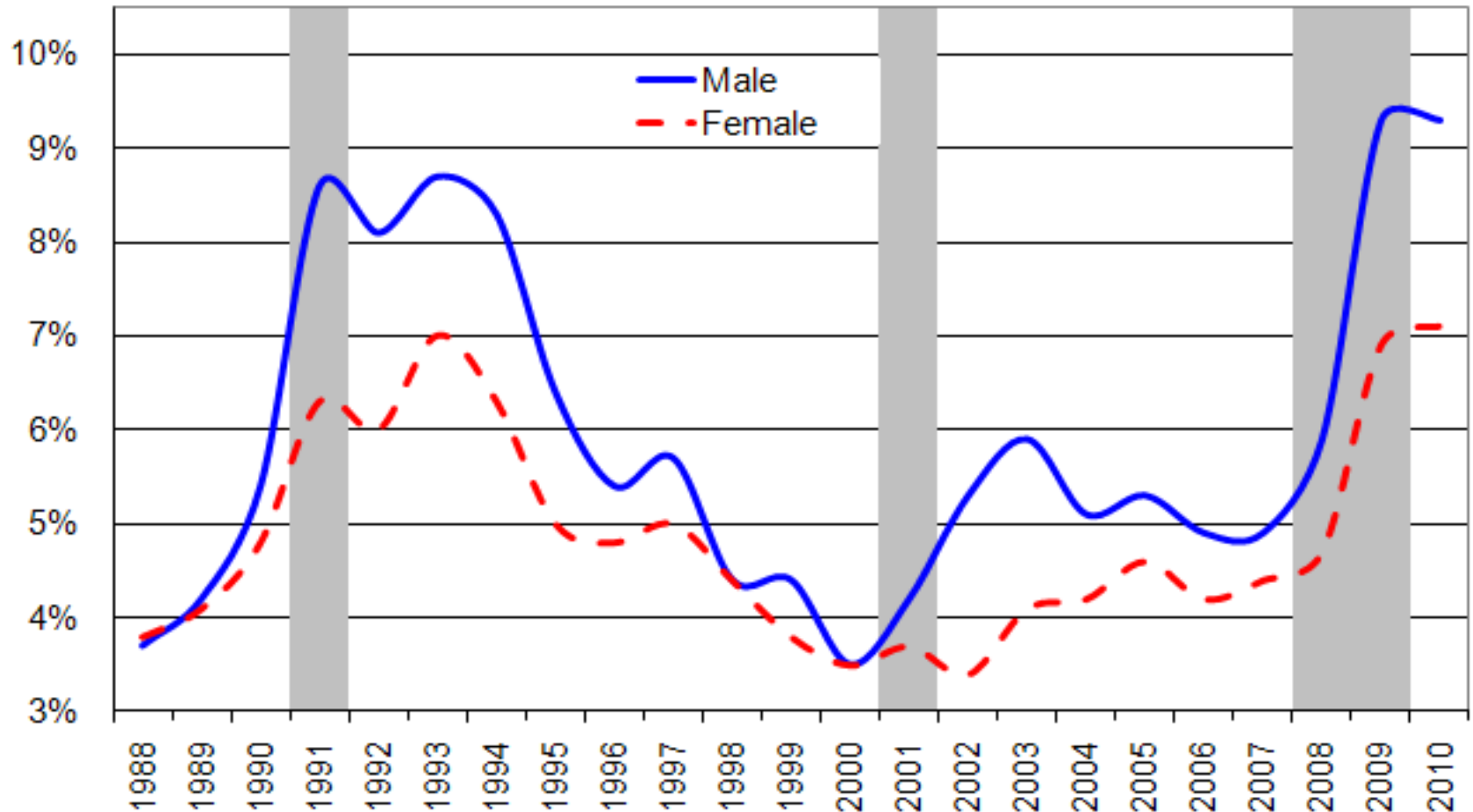
...and a large share of veterans are retirement age



Most veterans are male

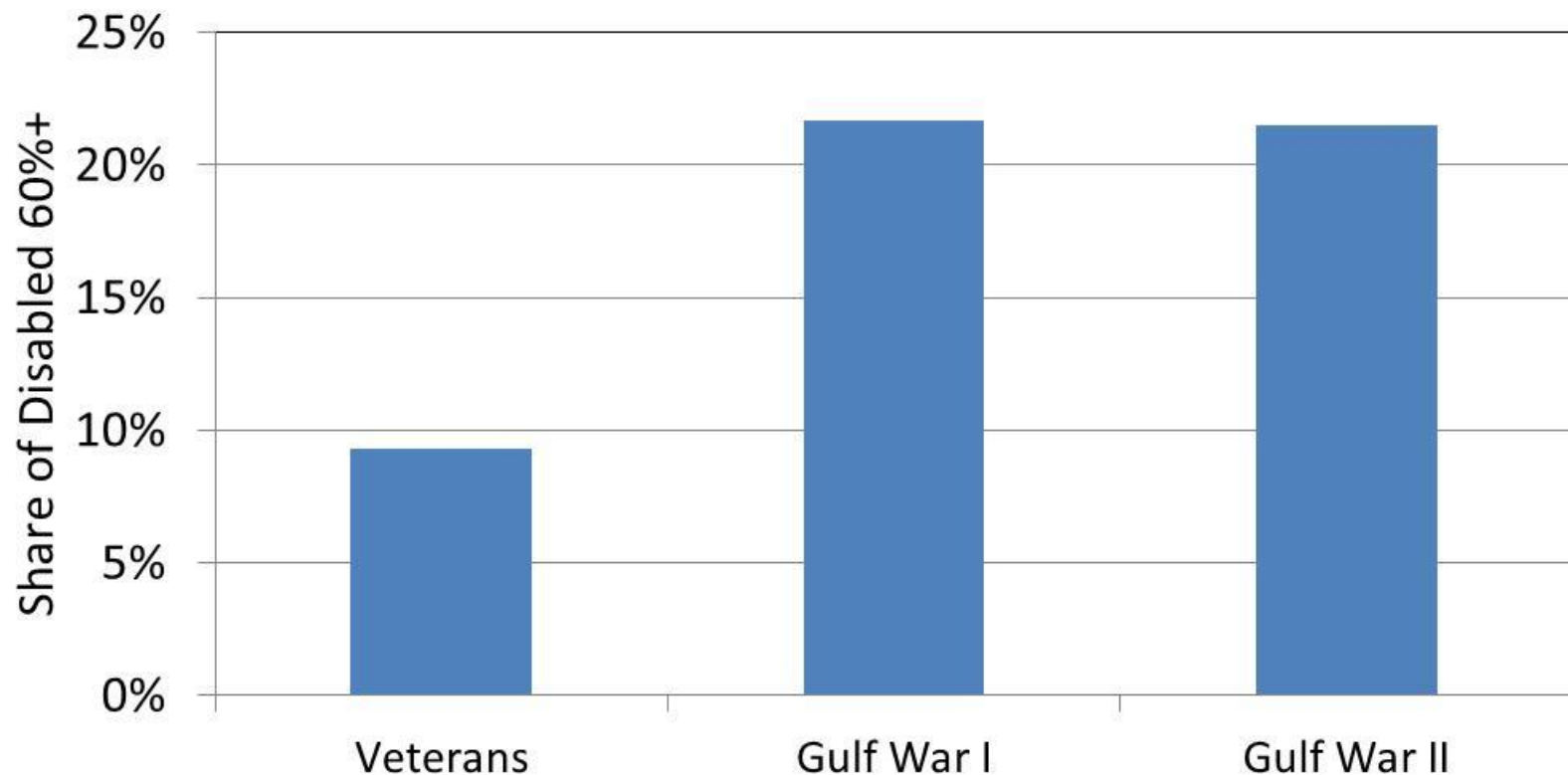


Unemployment rates are not only higher among men than women, but they increase much more during and shortly after recessions *(Maine annual averages)*



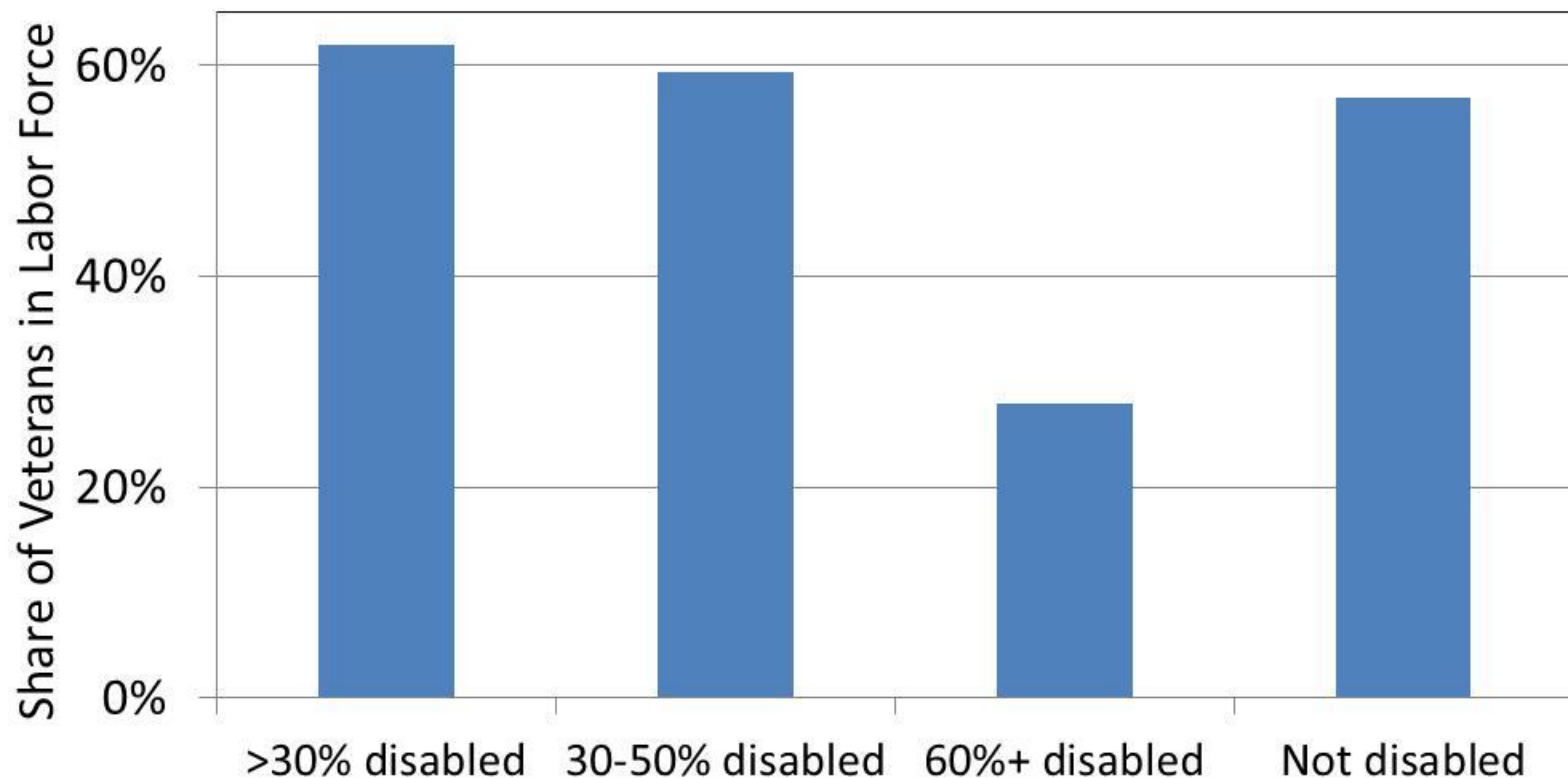
Among veterans with a service-connected disability, Gulf era veterans are more likely to be 60% or more disabled than previous groups, which limits their ability to work

(U.S. averages)



Veterans with the most substantial levels of service-connected disability are less likely to be in the labor force, while those less than 50% disabled are more likely to be in the labor force

(U.S. averages)



Based on demographic trends, veterans labor force participation rates will remain lower due to the high share of veterans at or near retirement age.

Unemployment rates for veterans may remain higher than for nonveterans for several years because young men will comprise a rising share of the veterans labor force (unemployment rates for men under 30 are nearly twice the average for those over 30).

Many disabled veterans are not in the labor force. Official unemployment rates only include individuals actively engaged in work search.