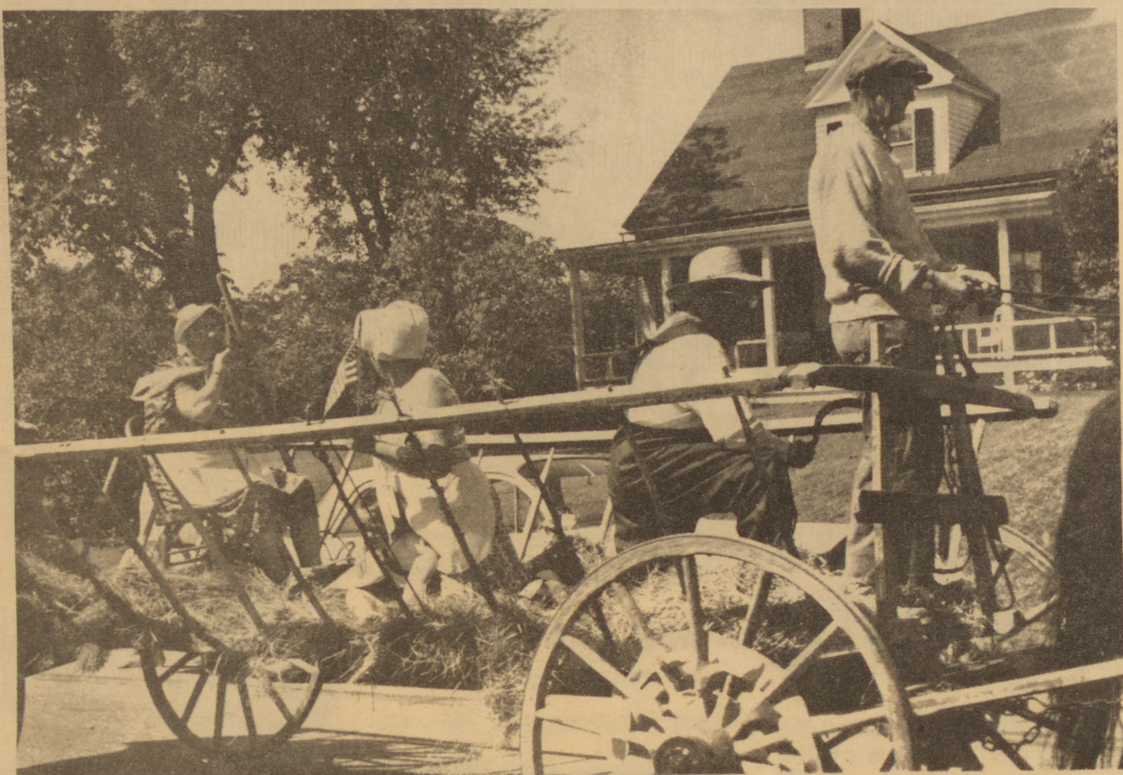


SURRY DAY

1766 SPECIAL SECTION 1966



THE ARBUTUS GRANGE FLOAT in the Surry Bicentennial parade Aug. 13, was an old-fashioned hay wagon driven by Otto Trundy. Also on the float were Howard Jellison, Stella Conary, Ray Gaspar and Abie Grant.



THE SURRY METHODIST CHURCH, which is now undergoing renovation to provide Sunday School rooms. The observance of Surry's 200th anniversary was a project of the church.

Church sponsors Surry birthday party

SURRY--It was almost a year ago that Rev. Kenneth Almeida assumed the pastorate at the Surry Methodist Church. For several months the church had had no pastor and Rev. Almeida's first sermon was preached to a congregation totaling six.

Since then the church has grown, and when talk of some sort of observance to honor the 200th anniversary of Surry's founding came up, it was the church that decided to sponsor it.

"They told me it couldn't be done," Rev. Almeida said, "but we did it anyway."

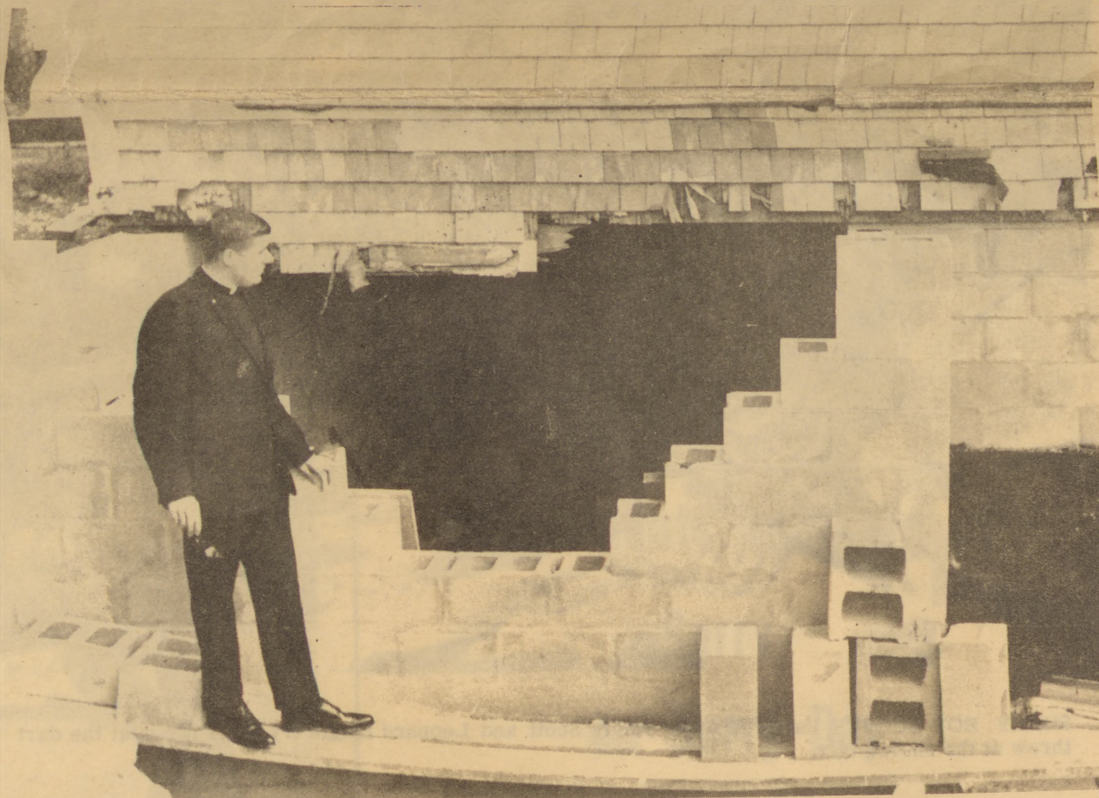
The day was a success. Hundreds of people were on hand for the morning parade; the church fair sold out--and netted between \$650 and \$700. A baseball game in the afternoon between the Little League and the old timers saw the latter the victor. The church supper ran out of food after three settings--serving 446 people--and had to turn away several hundred. The evening dance was well attended.

With this new vitality, the church is looking forward to a growing congregation and a more adequate building. The church recently elected Halton Foster lay leader, Daniel McGraw associate lay leader, Mrs. Rena Bonsey, financial secretary, Mrs. Mabel Lord, church treasurer, and Mrs. Foster Women's Society president. Mrs. Joseph Telford has been the church organist for a number of years.

The WEEKLY PACKET

Blue Hill, Maine, Thursday, August 25, 1966

20 cents a copy



PROCEEDS FROM THE SURRY DAY observance went into the Methodist Church building fund. So far the church has spent over \$3,000 in putting a basement under the church, giving it a 46 by 35 area which will house the Sunday school and a kitchen. This is the entrance to the new downstairs section. It is hoped to build another addition behind the church in the future. Looking at the entryway under construction is Rev. Kenneth Almeida, pastor of the church.



A PARADE drummer, Perry Astbury, North Blue Hill.



SMOKY THE BEAR, portrayed by Donald Fowler, in the Maine Forestry Service float. The truck was driven by David Livingston.

**EXTRA COPIES
of this
Special Section
on fine paper
may be secured at:**

Alexander's Drug
Ellsworth
McGraw's Market
Surry

**Or may be ordered
by mail from:**

The Surry Methodist
Church
Surry, Maine
at 20 cents per copy



PART OF SURRY DAY'S activities included pony rides for the children. Other activities, besides the parade, were a church fair, ball game, dance, and a supper which served 446 and turned hundreds more away.



PLAYING THE PART of the Clown during the parade was Mrs. Richard McGraw.



THE FLOAT OF THE Rainbow Grange, with Mr. and Mrs. Allen Lymburner and Norman Staples.



SURRY BOY SCOUTS Randy Moore, Teddy Scott and Leonard Daigle try their hands at the dart throw at the church fair.



THE THREE MISS SURRYS, at the Saturday night dance: Holly McGraw (Little Miss Surry); Elizabeth Wescott (Junior Miss Surry); and Susan Carter (Miss Surry).

**Abalena
Guest
Home**

Rt. 172

Surry, Maine

Tel. 667-2837

Jams,

Pickles,

Candy,

Home baked food

a specialty



Watch Repairing
Engraving
Diamond Setting
Ring Mounting
Jewelry Repairs
Jewelry Modernizing
Jewelry Appraisal
Trophies
Custom Jewelry

Donators of Gift Certificate to
Surry Day

All Work

Done on Premises

Visit Our

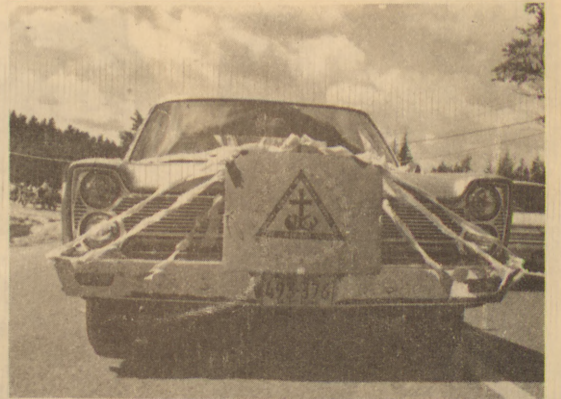
Downstairs Gift Shop

Britts of Ellsworth

Congratulations to Surry
Britts Dept. Store sponsored prizes for
Miss Surry
Miss Susan Carter



Carl Engstrom, Kenneth Almeida and Arthur Baribault.



Surry Methodist WSCS float. Insignia drawn by Joe Telford.



Surry Garden Club float. Occupants Mrs. Carlton House, Mrs. Herbert Vickers and Mrs. John McKay.



Robert McGraw (Oldtimer) runs out hit to first. Little Leaguer Gerey McNeal on first.



TOP: Bicycle riders in the parade. LEFT: Catcher Clinton McGraw signals the pitcher during the Little League vs. Oldtimers game. BELOW: The Surry Christmas Club float. Santa Claus was Roger Kane.



CHARLES McNEAL swings at a high one.



TWO UNIDENTIFIED patrons look over the selection at one of the tables at the church fair.



WILLIAM GREENE trundles home--safe.



Sears

CATALOG SALES AGENCY
Bob and Arlene Jordan

Theater Building - Main St. - 667-5381

ELLSWORTH

Let us open
a
Charge Account
For You

Shop in Person
or
by Phone or Mail

Payments
on
Sears Accounts
Accepted

Sponsored Prize for Little Miss Surry
Miss Holly McGraw

McGRAW'S MARKET

General Groceries

Tel. 667-5200

Surry, Maine

Congratulations

Carlisle's
Trading
Post

Surry, Maine

Congratulations
Surry

Compliments to Town of
Surry

on Surry Day

L. E. Leach

Insurance and Real Estate

374-2839

Congratulations to Surry

Women's Auxiliary

of the

Surry

Volunteer Fire Department



Bobby Ames, majorette mascot.



FORMING UP FOR THE PARADE



Pamela Hooper



Majorette Donna Ames



Dan McGraw gets a hit.



Little Miss Surry, Holly McGraw.



MAJORETTES Tone Marie Daigle, Debra McGraw, Theresa Daigle, Lee Stuart, Terry Curtis, Dorothy Sawyer, Barbara Saunders, Debra Carter, Patricia Ames, Jeanne Haydn and Donna Ames. Bobby Ames is mascot and Mrs. Louise Ames instructor.

Alexander's Pharmacy

Ellsworth

Modern Service

Old Fashioned Prices

Surgical Rentals and Sales

Prescription Service

Soda Fountain

Editions of this paper on sale at this store.

**Moore's
Drug
Store**

Ellsworth, Maine

Prescriptions

Outfit for
Little Miss Surry
Miss Holly McGraw
Donated by
The
**Adams
Corporation**

ZENITH

HANDCRAFTED
19" PORTABLE TV
19" overall diag. meas., 172 sq. in. rectangular picture area

FRED W. BEAL

Ellsworth

667-2569

Sound System for Surry Day
set up by Fred W. Beal, Inc.

Watch for Junior Miss Surry
--Miss Elizabeth Wescott--
donated by Fred W. Beal, Inc.



The TOURNEY • N2000C-6
The Slim Line Series
Lightweight, distinctive two-tone color
cabinet in Charcoal color and Off-White color.
Beautifully molded cabinet with matching UHF/VHF controls.
Deluxe Video Range Tuning System. Top Carry Handle.
Monopole Antenna.