

Summertime in the Belgrades



... Serving the Central Maine Lakes & Kennebec River Corridor

— A Cider Mill Press Publication —

VOLUME 18, NUMBER 1

Summer of 2016: Ready! Set! Enjoy!

by Esther J. Perne



Summer again means seeing the sandhill cranes.

Summer again! The season moves in. First the snowbirds return, the sandhill cranes, the loons, the Golden Pond sunsets and the early-season anglers. The open lakes beckon around every bend in the road and green creeps softly up the hills.

Wood deliveries and spring cleaning of yards and gardens catch the eye of the passerby, followed by the less visible tasks of tilling and planting - and the quiet nesting of the birds.

On the lakes motors hum, and occasionally sputter, and the voices of workmen and early camp openers carry clearly across the water. Familiar, eager, happy seasonal residents filter into villages, shops and local haunts. Greetings pervade along with gossip about changes since last summer.

Change is good, but not too much and that's



Summer businesses open.

Continued on page 2

Mid-Maine Marine Inc.
885 Kennedy Memorial Drive, Oakland, ME 04963
1/2 Mile West of Exit 127 off I-95 • 1-800-649-2628
www.midmainmarine.com

Check for Specials

See inventory,
Used boats,
Get quotes online

Pontoon Boat Packages to CELEBRATE Summer 2016

Wings Hill
Inn & Restaurant

Gourmet Dining
Culinary Institute Chefs
Casually Elegant Accommodations
Attentive Service

BELGRADE LAKES
www.wingshillinn.com
207-495-2400

CIRCA 1800

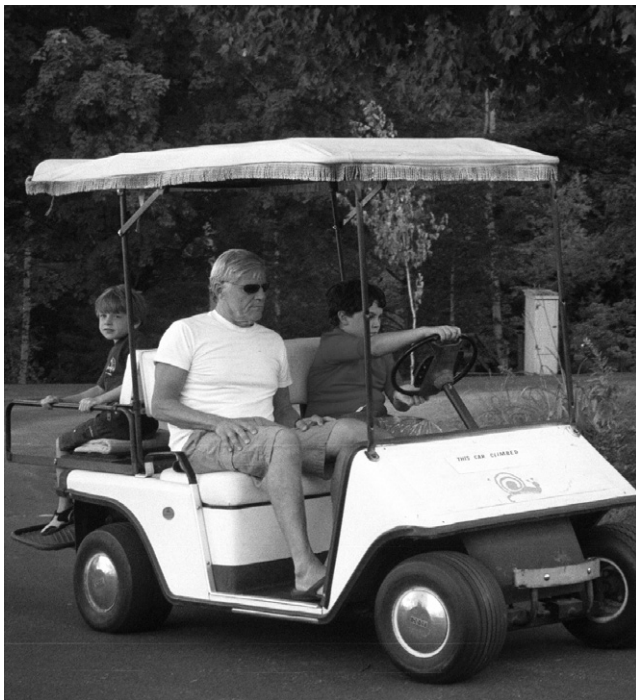
Hamlin's Marine

290 West River Road, Waterville • 207-872-5660
581 Main Road North, Hampden • 207-907-4385
www.hamlinsmarine.com

YAMAHA



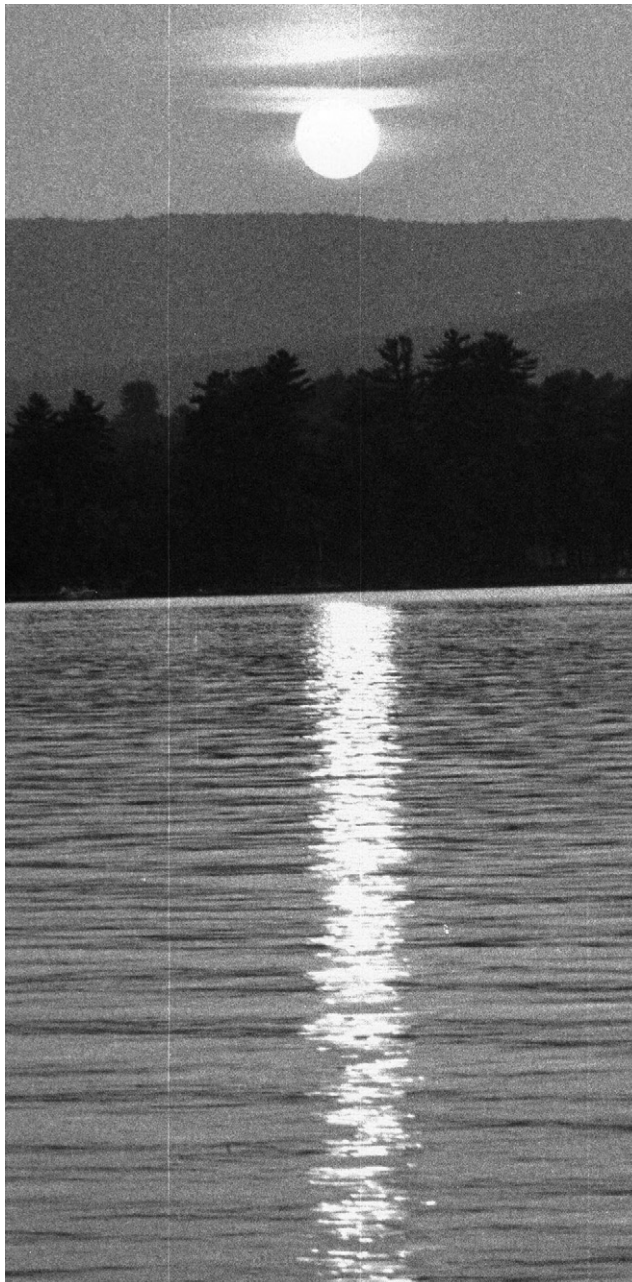
Continued from page 1



A long, proud history of summer followers. why the seasonals have returned here for generations - that plus the overwhelming beauty and peace and memories they embrace.

Soon the weekenders swoop in for a day here, an overnight there - families juggling diverse schedules of work and sports activities and dual homes - usually within a commutable radius. Not unlike the area's much-loved wildlife inhabitants, sometimes the weekenders have their young in tow and sometimes they are out foraging - a bit happily it appears - alone.

Close on the weekender/camp owner surge, the corps of students arrives, some to attend the



Golden Pond sunset...

traditional overnight youth camps and others to take up job posts throughout the region. They are young and enthusiastic and their school schedules provide the parameter for when many of the summer lodges and businesses are fully open and for when the boys and girls camps ring with comradeship and laughter. Without fail, some of these students will become addicted for life - to the lakes - and become the next generation of vacationers, weekenders and seasonals.

By now the area is bustling with extra people, with guests and visitors and vacationers and of course those love-to-visit-in-the-summer (and only then) relatives. It is also bustling with watercraft and roadcraft, with shoppers and browsers, with outdoor enthusiasts and event-goers of all ages.

The swell of the summer resort industry is the heritage of this region. It recalls a long, proud history of summer followers, provides a recharging of traditional events and activities, sets a precedent for appreciation of what those who live here might take for granted and is an invitation for everyone no matter where they are based in the Belgrades and beyond to venture out to the lakes that beckon around every bend in the road and the hills that are covered in green.

Ready, set, enjoy!



How will you use your Home Equity Line of Credit?

3.25% APR*
2 Years

After the first 24 months, rate will be variable based on the Prime Rate, minimum **3.99% APR***
Other rates and terms available.



Pay for college?



Knock down high interest debt?



Fix up your home?

More than just a line, it's straight talk and a fair deal.
Call **800.303.9511** or visit **SkowheganSavings.com**



*Offer good through June 30, 2016. No closing costs for customers with an Integrity Plus checking account unless an appraisal is required. Maximum loan-to-value is 85% on a 1-4 family, owner-occupied residence. APR rates based on a minimum draw of \$10,000 of new money. Introductory rate of 3.25% will remain fixed for 24 months after the date of closing then convert to a variable rate based on the Wall Street Prime rate at that time. This rate will be subject to change but will not be lower than 3.99% APR or higher than 18% APR. Usual closing costs range from \$300-\$400. All loans subject to credit approval. Other restrictions may apply.



Skowhegan Savings
Straight Talk. Fair Deals.

We put you on the best path to find a primary care provider.



Finding a primary care provider who listens. Who delivers high quality, personal care. It should be easy—we agree. It's why Inland Hospital gives you *three simple ways* to find the respectful care you and your family deserve:

Call us at 1-800-914-1409 or
email us at inlandproviderfinder@emhs.org or
visit inlandhospital.org/providerfinder.

Whatever way is most convenient for you!



Inland Hospital
EMHS MEMBER

200 Kennedy Memorial Drive • Waterville • 861-3000
inlandhospital.org



MICHAEL BREAUT

Creative solutions for all your Mac needs

"If you want a pro, call Bro"

Robert Lockwood, Designer, Painter, Author, Musician
designer of Newspapers Around the World

Macintosh and iOS support, based in Western Maine, working onsite throughout Maine



If you have Macs, iOS devices, software or network problems, websites you'd like built, or any ideas you would like to implement using Macintosh computers, give me a call and we can discuss if I can help...

207-578-0226 • www.michaelbreault.net



Table of Contents

2016: The Summer Season Moves In..... 1-2

Table of Contents..... 3

Welcome Back from "Summertime"..... 3

Legacies: "The Luckiest Boy"..... 4

Waterville Country Club Turns 100!..... 4

"Take It Outside" with Pete Kallin..... 5

Directory of Where to Go, What to Do, Town by Town..... 6-7

The Dam Keeper Report..... 7

Calendar of Events: Awesome Activities Start the Season..... 8-9

Kennebec Corridor Map: Along the River..... 9

Belgrades Watershed Map..... 10-11

Upcoming: Activities to Return For or To Stay For..... 12

Cobbossee Watershed Map: From Mount Vernon to Wayne..... 12

Friends of Cobbossee's Tadpole Patrol 13

Conservation Too: Keep Your Soil Out of the Water..... 13

Accommodations: Hunker Down for the Night..... 14

Notebook: Announcements, Notes, News..... 14

Dining Suggestions: Fine Food to Picnic Fare..... 15

Weekly Summer Races at Quarry Rd 15

Business Directory: The Best Businesses and Services in the Area 16-17

Association Directory: A Group For Every Reason 17

Espresssions: Summer Art Exhibits..... 18

LakeSmart: Infiltration Trenches..... 18

Business: Workforce Development in Central Maine..... 19

Welcome Letter



Dear Readers:

Welcome back....to Summertime in the Belgrades, to the region whose heartland is the lakes and waterways, to the season that so many visitors, vacationers and residents live for and love.

Although the classic Maine greeting always includes a weather remark, since the weather outside keeps changing, Summertime in the Belgrades starts this season with an ode to the predictable - the migration of people, that tide of seasonal returnees and new arrivals, who embrace the lifestyle, endorse the region and support the diverse activities our pages and the surroundings offer and do so regardless of the weather.

There is a tide of seasonal people, too - staff, columnists, advertisers and readers, both returning and new - that surface with the first issue of Summertime in the Belgrades. We welcome them all: you, the readers, definitely, but also the advertisers who make Summertime in the Belgrades possible and popular, the highly dedicated staff, and the columnists who form the frontline of communication.

This summer, weekly, Pete Kallin will be writing about the great outdoors and how great it is for all of us; Rod Johnson, aka The Luckiest Boy, returns with a warm and wonderful look back - but not too far - in Belgrade time; Susan Gay will offer LakeSmart tips in an "a-ha" format which clarifies all those conservation terms; The Kennebec County Soil and Water Conservation District through Dale Kineth and his staff will take us around the county introducing projects and problems that they work on daily; Dam Keeper/Captain Dick Greenan will provide reports on the dams and on the Great Pond Yacht Club and sailing activities; and we will be hearing from fishing guru Mike Guarino and other familiar contributors throughout the summer.

Since each summer experience may be relived but is also new each season, Summertime in the Belgrades salutes summer as a forward-looking season. Starting with the first - and the busiest - weekend in June, the events, the activities and the opportunities get bigger and better. There is a welcoming bustle to summer, a busyness balanced by a thankful laziness.

So here's to summer, here's to the freedom, adventure and beauty of the open water and scenic woodland, and here's to the seize-the-moment opportunity to step unhindered out the door and head to an activity or the nearest lounge chair.

Summer is fun and we wish the greatest of summertime fun to you.

Esther and Erle
Michael, Gregor
Corey and Ethan

Summertime in the Belgrades

--A Cider Mill Press Publication--
PO Box 290, Belgrade Lakes, ME 04918
Editor: Esther J. Perne, 207-495-3777 • ebelnews@earthlink.net
Advertising Director: Erle Morse, 207-495-3777 • ebelnews@earthlink.net
Layout Design: Michael Breault, 207-578-0226 • mo.breault@gmail.com
Webmaster : Gregor Smith • gregor@roadrunner.com
www.sumbelnews.com

This publication is copyrighted ©MMXVI, Cider Mill Press Publications, All Rights Reserved.

CSS Cayer
Security Services, Inc.

COMMERCIAL & RESIDENTIAL
Burglary & Fire Alarm Systems
Video Surveillance & CCTV
Access Control
24 Hour UL Listed Monitoring Service

453-9177
www.cayersecurity.com

NORTH BAY ESTATES
ROUTE 8 • NORTH BELGRADE

~ **FOR SALE** ~

Custom Built Homes
by *Craig's Carpentry*
1 & 2 acre lots
with lake views from
Great Pond overlook
Craig Alexander
cell (207) 649-3749 • crgsnbe@yahoo.com

Join us...and help protect our lakes!

Protect and Preserve

EST. **B.L.A.** 1908

Belgrade Lakes Association
137 Main Street, Belgrade Lakes, Maine 04918
207-512-5150 • www.belgradelakesassociation.org



—The Luckiest Boy—

What is it about this time of year that gives us all the feeling that something special is going on? There's a subtle but definite sense of enlightenment, a rekindled awareness of our surroundings, with noises and smells not heard or sensed for nearly a year. It's not just one or two things that cause us to feel a little giddy, but a whole shopping list.

I started to name some items that seem appropriate and realized that because there were so many, I needed to break them down into categories. I ended up with four columns: smells, noises, visuals and other.

Let's start with smells. How 'bout barbecue smoke from the neighbors grill, fresh earth from the tilled garden, mulch from the bark and leaf piles, apple blossoms and lilac buds, the list goes on. See what you can come up with.

Moving on to noises, oh yah, and there are plenty. Let's start with returning birds chirping their favorite songs, water running in the brooks and streams, kids yelling while playing outside after sup-



per, a lawn mower in the distance. Two of my favorites are the peeping and croaking frogs at dusk, and it nearly goes without saying, that the loons calling is most likely to be voted #1 sound.

The visuals seem most important. Here are some: pussy willows are easy to spot before the leaves come, and as the snow recedes, crocuses are the first color along the house foundation. The many kinds of tree buds have appeared, and especially noticeable are those of the red maples. The tulips are beautiful

but short lived, and the many species of ferns down in the wet areas are popping. As snowbirds ourselves and as we cruise up the Maine Pike around May 1st, there are always comments on the bright yellow forsythia growing around the bridge abutments.

What fits into the "other" column? Perhaps the longer days, damp morning air, the warming lake, and oh yes, let's not forget pot holes in the camp roads!

All in all, this list only scratches the surface, but one thing is for sure—they all add up to the many causes of SPRING FEVER. It's a time for new awakenings for all living things both plant and animal. Is spring your favorite time of year? THE END

Author's Note: By the time you read your first copy of The Summertime News, spring will be well on the way to summer. So enjoy what's left of spring and welcome in the summer of 2016. Thank you for being a reader. TLB 

— Legacies —

The Waterville Country Club is celebrating 100 years, 1916 to 2016 marks the centennial celebration planned for this July.

The founding of the Waterville Country Club was established in 1916 by a Nathaniel Barrows, along with many local residents and business members of the community. The club began with memberships starting at \$25 and set a limit on memberships at 300. Starting with the original 9-holes the Waterville Country Club expanded in 1965 to the full 18 holes that you see today.


Over the years the club has shared its course as a venue for a long list of



100 Years for Waterville Country Club

notable golf events. Hundreds of players come to Waterville for state wide events. Annually the club hosts a number of charity events. All these events enhance the reputation of a modest club and a wonderful golf course founded in 1916 that has been nurtured for a century by generations of Waterville members.

In July the Country Club has planned a vari-

ety of tournaments, dinners and entertainment for the enjoyment of the community and the members. Please see check the website at www.watervillecountryclub.com or call (207) 465-8238 for more information on how you can become involved in the wonderful series of events and opportunities to golf & dine at Waterville Country Club. 

UNION COFFEEHOUSE



Featuring Maine's Favorite Folksinging Duo

Simons & Goodwin

**Great Songs, Great Harmonies,
Great Guitar Playing, Great Fun!
Plus Open Mic Hour**

Saturday, June 11th - 7:00 PM

Union Church - Route 27 in Downtown Belgrade Lakes
Refreshments \$5.00 Donation at the Door



winery & distillery

Visit our tasting room
for award winning
wines and spirits made
from local apples,
pears and maple syrup.
Now distilling Absinthe.
Private group tastings
and tours available.

152 Fairfield Street
Oakland, ME 04963

www.treespiritsofmaine.com





— Take It Outside —

Greetings to the greater Belgrade Lakes Community and welcome back summer residents and visitors!

When I was growing up and there was any kind of ruckus in the house, which was pretty common with six kids, my mother would tell us to, "Take it outside!" We would then head out to the woods behind the house to find something to do. My mother was a wise woman. Fifty years before Richard Louv wrote *Last Child in the Woods* in 2008, she had an innate understanding of "Nature Deficit Disorder" and knew that direct exposure to nature is essential for a child's healthy physical and emotional development. Louv later proved that kids who spend a lot of time outside are healthier, have longer attention spans, and are less likely to suffer from depression or childhood obesity. If you haven't read Louv's book, you should. I hope this column will inspire you to take advantage of all the outdoor recreation opportunities in our area and especially about the importance of getting youngsters outside and interacting with Mother Nature. Mother Nature is an amazing teacher and we can all learn from her.

This year was an unusually warm winter with very little snow and a very early ice-out (March 29 on Great Pond and Long Pond), about 3 weeks earlier than normal. The early spring was cold and windy and the water took a while to begin warming up. Once the surface water hit about 50 degrees (F) the fish began to get active and I caught a lot of very large bass on flies fished deep near the bottom in about 20 feet of water near dropoffs. The first 10 smallmouth bass I caught this year were all in the 3-4.5 pound range. Also, the shortened ice fishing season has left a lot of nice trout in the lakes. At least one 8-pound brown came out of Great Pond, I got a 6-pounder from Long Pond and Mel Croft has been catching both brook and brown trout in East Pond. By the time this article is published, the water temperature will be in the mid to high 60's in most of our lakes and the bass will be in the shallows, either on beds or chasing sunfish on beds. Fast action can be had with surface poppers, jerk baits, or Senko type jigs.

The hiking trails in the Kennebec Highlands and nearby Belgrade Regional Conservation Alliance (BRCA) properties like French Mountain, Mount Phillip, and The Mountain are beautiful, verdant, and awash in spring and early summer wildflowers like trillium and lady slippers and birds and other wildlife. The black flies have already disappeared and it has been so dry the mosquitoes are barely noticeable, especially if there is a bit of a breeze. Hiking provides relaxation, improved fitness, and allows you to develop a new perspective about our region. My friend Kathi Wall works at the Maine Lakes Resource Center (MLRC) Annex in the village and has turned The Mountain Trail into her personal Fitbit. Several times a week, she hikes a specific stretch of the trail on her lunch hour and tracks her fitness improvement by tracking how

We Can All Learn from Mother Nature

by Pete Kallin



Long Pond brown trout



Mel Croft with East Pond brookie.



Alex and Kathi Wall on The Mountain.



American toad hiding under a rock next to the burned over area at French Mountain.



Fire hose across the top of French Mountain and some of the fire damage.

long it takes her to get to a certain point, and her pulse, and respiration rate when she gets there. At the same time she can see how the woods change with time, which flowers are blooming when, and what birds and animals are out and about.

When you are out in the woods and on the trails, please be careful and use common sense. In the third week of May, a careless hiker started a fire at the top of French Mountain that ended up burning several acres on the side of the cliffs overlooking Whittier Pond and some of the top of the mountain. A potential disaster was averted by the rapid response of fire companies from ten local towns and the Maine State Forest Service, which had two helicopters scooping water from nearby lakes in 250 gallon buckets and dropping it on the steep cliffs where the firemen couldn't reach. The local firefighters ran over a half mile of hose to the top of the mountain and spent hours containing the fire with shovels, axes, and five gallon "Indian fire pumps" on their backs. It actually took about

three days before the fire finally burned itself out. It was a heroic effort but an unfortunate and expensive expenditure of taxpayer resources because of someone's thoughtless careless actions. The next day I saw numerous birds like hermit thrushes, pine siskins, and various sparrows befuddled and searching for their burned out nests.

As you can see, there are plenty of recreational opportunities in the Belgrade Lakes Region. Groups like the Belgrade Regional Conservation Alliance (BRCA) lead hikes and paddles throughout the summer. Check their web site at www.belgradelakes.org for the latest schedule, which is usually included elsewhere in this paper. I will be writing about some of these trips throughout the summer in future editions of this column. In the meantime, take a kid fishing or on a hike, or paddling in a canoe. Or take a parent, so they can become a kid again.





Calendar Directory

TOWN BY TOWN...

GREAT VISITS, AWESOME OUTINGS – ART, MUSIC, CULTURE, HISTORY, RECREATION, FARMERS' MARKETS, TRAILS, SCENIC SITES, AND MORE...

AUGUSTA

- **Viles Arboretum**, 224 acres with 6 miles of year round walking trails, including art and sculpture trail, open dawn to dusk, Visitor Center open Monday-Friday, 9 am-4 pm, admission free, 626-7989, www.vilesarboretum.org, 153 Hospital Street
- **Farmers' Market at the Arboretum**, indoors, Friday 1-5 pm
- **Art in the Capitol**, Maine Arts Commission monthly self-guided exhibits in State House hallways (Mon-Fri 8 am-5 pm), Blaine House (call for times), and Maine Arts Commission Office (8:30am-4:30 pm), 287-6746, mainearts.maine.gov
- **Children's Discovery Museum**, CDM, hands-on displays, activities, Tuesday-Thursday 10 am-4 pm, Friday-Saturday 10 am-5 pm, Sunday 11 am-4 pm, admission, 622-2209, www.childrensdiscoverymuseum.org, 171 Capitol Street
- **Danforth Gallery**, Jewett Hall, art exhibits, UMA-1234, www.uma.edu
- **Governor's Mansion**, 1830 Blaine House, Tuesday-Thursday 2-4 pm, 287-2121, www.blainehouse.org, State Street
- **Holocaust and Human Rights Center of Maine**, Michael Klahr Center, Monday-Friday 8 am-4 pm, 621-3530, www.hhrc.uma.edu, University of Maine at Augusta, off Route 27
- **Kennebec Historical Society**, Wednesday-Friday 10 am-2 pm, 622-7718, www.kennebechistorical.org, 107 Winthrop Street
- **Maine State Museum**, Tuesday-Friday 9 am-5 pm, Saturday 10 am-4 pm, \$2 adults, \$1 ages 6-18, 287-2301, www.maine-statemuseum.org
- **Maine State House**, Hall of Flags, House and Senate Rooms, Klir Beck dioramas, Monday-Friday 8 am-5 pm, book tours at Maine State Museum, walk-ins welcome 9 am-1 pm, 287-5600, www.maine.gov, State Street
- **Maine State Library**, Monday-Saturday opens 9 am, 287-5600, www.maine.gov/msl/, State Street
- **Museum in the Streets**, walking/history tour, www.augusta-maine.gov, Water Street/downtown.
- **Old Fort Western**, 1754 fort, house, store, 1-4 pm daily, admission \$6, 4-14 years \$4, 626-2385, www.oldfortwestern.org, Cony Street
- **Riverfront Park**, boat launch, Greenway Trail, playground, eastside Kennebec River
- **Kennebec River Rail Trailhead**, Maine State Housing Authority parking lot, 623-8162, www.krrt.org, Water Street
- **University of Maine at Augusta Fitness Trail**, 2 miles of wooded trails, near Civic Center, Route 27
- **Farmers' Market at Mill Park**, Tuesday 2-6 pm, 626-2305, www.farmersmarketmillpark.org/, North Water Street
- **Farmers' Market at Turnpike Mall**, 549-5112, Wednesday and Saturday 10 am-1 pm, Western Avenue

BELGRADE LAKES

- **Great Pond Mailboat**, 215-7520, Monday-Saturday 10 am, Post Office, Main St.

- **The Belgrade Community Center for All Seasons**, pool and lakefront, gym, playground, picnic area, rec programs, 495-3481, www.belgrademaine.com, 1 Center Drive
- **Union Church Coffee House**, check for schedule, 7:30 pm, \$5, 495-3599, www.unionchurchmaine.org, Main Street
- **Belgrade Historical Society**, 465-7924, belgradehistoricalsociety.org
- **Belgrade Lakes Market**, Sun 8 am-1 pm, Main Street
- **Peninsula Park on Long Pond**, picnic tables, Main Street
- **Maine Lakes Resource Center**, 512-5150, www.minelakesresourcecenter.org, 137 Main Street

FAIRFIELD

- **Fairfield Historical Society**, 1890 Cotton-Smith History House, every Tuesday 9 am-12 noon and 1-4 pm and second Saturday of month, 453-2998, www.fairfieldmehistoricalociety.net, 42 High Street
- **Farmers' Market**, 948-5724, Wednesday 2-6 pm, Saturday 9:30 am-1:30 pm, Nazarene Church parking lot, 81 Main Street

FARMINGTON

- **Farmington Historical Society, Titcomb House Museum**, 778-4275, Wednesday and Saturday, 11 am-2 pm, July-August, www.farmingtonhistory.org, 118 Academy Street
- **Nordica Homestead Museum**, opera singer Lillian Nordica costumes, jewelry, mementos, 778-2042, Tuesday-Saturday 10 am-12 noon and 1-5 pm, Sunday 1-5 pm, www.lilliannordica.com, 116 Nordica Lane, Holley Road
- **Contra Dance**, 491-9928, www.starleft.org 2nd Saturday of the month, all welcome, 6:30-7:30 pm family dance, 8-11 pm regular dance, admission, Grange Hall, Bridge Street, Route 43, West Farmington
- **University of Maine campus and Arboretum**, four walking tours with informal guide pamphlet to campus trees, 581-1541, www.umaine.edu/arboretum/, downtown
- **Farmers' Market**, 778-6602, Friday 9 am-2 pm, Better Living Center parking lot, Front Street; Saturday 8 am-12 noon, Main Street
- **Meetinghouse Park and Gazebo**, weekly concerts throughout summer, downtown
- **Fairgrounds**, events throughout summer, Franklin County Fair in September, High Street

GARDINER

- **Artdogs and Circling the Square Fine Art Press**, Friday 1-5 pm, Saturday 10 am-4 pm, 582-6600, www.theartdogs.com, 275-277 Water Street
- **Johnson Hall Performing Arts Center**, 582-7144, www.johnsonhall.org 280 Water Street
- **Monkitree**, art exhibits, 512-4679, www.monkitree.com, Tuesday-Friday 10 am-6 pm, Saturday 12-6 pm, 263 Water Street
- **SpinOff Studio**, 588-7297, spinoffstudio.org, Monday-Friday 8:30 am-4:30 pm, 405 Water Street
- **Farmers' Market**, 512-8022, www.gardinerfarmersmarket.org, Wednesday 2-6 pm, rain or shine, The Common
- **Kennebec River Rail Trail**, 623-8162, www.krrt.org, access near Gardiner/Randolph Bridge, 6.5 miles to Augusta
- **Waterfront Park**, picnicking, events throughout summer, Kennebec River

GREENE

- **Araxine Wilkins Sawyer Memorial**, free entertainment

programs, monthly - Friday 2 and 7 pm, 946-5311, www.sawyer-foundation.com, 371 Sawyer Road, off Route 202

HALLOWELL

- **Harlow Gallery**, Kennebec Valley Art Association, 622-3813, www.harlowgallery.org Wed- Sat, 12-6 pm, 160 Water Street
- **Gaslight Theater**, 626-3698, www.gaslighttheater.org City Hall, 1 Winthrop Street
- **Museum in the Streets**, history / walking tour, www.historichallowell.org, downtown
- **Farmers' Market**, 622-1350, Sun 3-6 pm, Water Street
- **Vaughn Woods and Homestead**, 166 acre park/trails/homestead, Middle Street
- **Kennebec River Rail Trail**, www.krrt.org, to Augusta, Farmingdale/Gardiner, Water Street
- **Waterfront Park**, deck/walkway on Kennebec River, North Water Street

HINCKLEY

- **L.C. Bates Museum at Good Will-Hinckley School**, early 20th century natural history and cultural exhibits, nature trails and camps, adults \$3, up to 17 years \$1, 238-4250, www.gwh.org Wednesday-Saturday 10 am-4:30 pm, Sunday 1-4:30 pm, Route 201

KINGFIELD

- **Ski Museum of Maine**, 265-2023, www.skimusuemofmaine.org, 256 Main Street
- **Stanley Museum**, 265-2729, www.stanleymuseum.org, memorabilia/displays on photographs, violins and Stanley Steamers, Tuesday-Sunday 1-4 pm, 40 School Street

LIVERMORE

- **Washburn-Norlands Living History Center**, 18th-19th century mansion/farmstead/schoolhouse, library, chapel, 897-4366, www.norlands.org, admission, living history tours Tuesday and Thursday 1-4 pm, 290 Norlands Road

MADISON

- **Lakewood Theater**, Maine's Summer Theater, Young Performers Camp, 474-7176, www.lakewoodtheater.org, Route 201
- **Skowhegan School of Painting and Sculpture**, 474-9345, www.skowheganart.org, summer evening artists lecture series, East Madison Road

MONMOUTH

- **Monmouth Museum**, local and regional Maine history, Wednesday-Sunday 1-4 pm, 933-2287, www.monmouthmuseum-inc.org, 751 Main Street
- **The Theater At Monmouth**, The Shakespeare Theater of Maine, Cumston Hall, 933-9999, www.theateratmonmouth.org, Main Street

MOUNT VERNON

- **D.E.W Animal Kingdom**, Zoo, 293-2837, 918 Pond Rd, Route 41
- **Villages Market**, farmers/crafters, Saturday 10 am-2 pm (start end of June), next to Flying Pond Store, sharihamilton@gmail.com, Route 41

NEW PORTLAND

- **Nowetah's American Indian Museum and Craft Shop**, 628-4981, www.nowetahs.webs.com/, daily 10 am-5 pm, free, 628-



Elliot B. Thayer, PLS, PE
Andrew Dunbar, PLS, LPF, LSE
RESIDENTIAL & COMMERCIAL
SITE DESIGN
STATE & LOCAL
PERMIT APPLICATIONS
PREPARED & PRESENTED
17 Hasson Street
Farmingdale, ME 04344
582-7762
www.thayereng.com

Lakepoint

REAL ESTATE

P.O. Box 221, 221 Main Street
Belgrade Lakes, Maine 04918
Cell: (207) 592-5577
Office: (207) 495-3700
Fac: (207) 495-3707
www.belgradelakepoint.com
stephanie@belgradelakepoint.com



Stephanie Yeaton
Broker

PAUL HANNA'S PLUMBING



207-495-3805

New Homes and Remodels ~ Camps
Water and Sewer Pumps ~ Water Filtration
Paul Hanna, Licensed Master Plumber



4981, 2 Colegrove Road, Route 27

- **Wire Bridge**, 1864, probably only wire suspension bridge in U.S., off Route 27

NEW SHARON

- **Farmers' Market**, Saturday 9 am-1 pm, Douin's Market, 491-9025, 150 Mercer Road, Routes 2/27
- **New Sharon Historical Society**, Saturday 1-3, 778-4167, Routes 2/27

NORRIDGEWOCK

- **Norridgewock Historical Society Museum**, 1838 building, Saturday 10 am-3 pm, 634-5032, www.norridgewock.com, Mercer Road, Route 2
- **Oosoola Park**, picnic area, great playground, boat launch, on Kennebec River, Route 8

OAKLAND

- **Macartney House Museum, Oakland Area Historical Society**, 465-7549, Wednesday 1:30-4:30 pm, 1815 home with antique furnishings and Oakland artifacts, 25 Main Street
- **Town Parks**, playground, picnic tables, swimming area, boat launch area, Belgrade Road on Lake Messalonskee and McGrath Pond Road on McGrath Lake
- **Farmer's Market**, Friday 2-6 pm, 465-3094, Pine Acres Parking Lot, 895 Kennedy Memorial Drive

READFIELD

- **Readfield Historical Society and Museum** in 1853 school-house, 685-4662, www.readfieldhistorical.org, Thursday and Saturday 10 am-2 pm or by appointment, Route 17, Readfield Depot

ROME

- **Mt. Philip Grange**, suppers 3rd Sat of month, 4:30-6 pm, all you can eat beans, cornbread, rolls, chop suey, pies, Routes 135/225
- **Trails**: Mount Philip, Route 225; The Mountain, Route 27; French's Mountain and Kennebec Highlands, Watson Pond Road; for information call 495-6039 or visit www.belgradelakes.org; maps available at BRCA, 137 Main Street, Belgrade Lakes

SIDNEY

- **New England Music Camp**, concerts free and open to the public, Bowl-in-the-Pines on Lake Messalonskee, 465-3025, www.nemusiccamp.com, 8 Goldenrod Lane, Route 23
- **Sidney Historical Society**, 724-8032, www.sidneyhistoricalociety.org, 2986 Middle Road
- **Silver Spur Riding Club**, horse shows, River Road, Route 104

SKOWHEGAN

- **Margaret Chase Smith Library**, residence, home, museum exhibits, 474-7133, www.mcslibrary.org, free, Monday-Friday, 10 am-4 pm, 54 Norridgewock Ave.
- **History House Museum**, 1800s local history and culture, heirloom gardens, free, Tuesday-Saturday, 10 am-4 pm, 474-6632, www.skowheganhistoryhouse.org, 66 Elm Street
- **Fairgrounds**, weekly horse shows/competitions, free public events, covered arena, Skowhegan State Fair in August, 474-3621, Madison Avenue, Route 201
- **Farmers' Market**, Wednesday 3-6 pm, Saturday 9 am-1 pm,

weekly entertainment, 938-3906, Somerset Gristmill parking lot, downtown

SMITHFIELD

- **Fairview Grange**, 362-2791, Route 8
- **Smithfield History Society "The Groves House,"** 634-4392, 21 Lakeview Drive
- **Sunbeam Roller Rink**, 362-4951, 830 Village Rd, Route 8
- **Sunset Camps**, public beach, 362-2611, www.sunsetcamps.com, 834 Village Road, Route 8

UNITY

- **Unity College Centre for the Performing Arts**, folk genre music, 568-3147, www.unitymaine.org, 42 Depot Street

WATERVILLE

- **Aqua City Actor's Theatre (ACAT)**, 873-7000, www.acattheatre.org. Waterville Opera House Studio Theater, Main Street
- **Museum in the Streets**, downtown history/walking tour, www.themuseuminthestreets.com/waterville.htm
- **Head of Falls Park/Two Cent Bridge**, historic foot bridge over Kennebec River connecting Waterville and Winslow, Front Street
- **Common Street Arts**, 872-2787, www.commonstreetarts.org, Wednesday-Saturday 12-6 pm, 16 Common Street
- **Colby College Museum of Art**, 859-5600, www.colby.edu/museum/ Tuesday-Saturday 10 am-5 pm, Sunday 12-5 pm, free admission, Colby College Campus, Mayflower Hill
- **Colby College Special Collections**, Miller Library, Monday-Friday 10 am-12 noon and 1-4 pm, free admission
- **Thomas College Art Gallery**, 180 West River Road
- **Waterville Historical Society and Redington Museum**, 1814 home and pharmacy, 872-9439, www.redingtonmuseum.org. Tuesday-Saturday tours at 10 and 11 am, 1 and 2 pm, 62 Silver Street
- **Waterville Opera House**, 873-7000, www.operahouse.com, 93 Main Street
- **Farmers' Market**, Thursday 2-6 pm, 680-2055, www.watervillefarmersmarket.org, The Concourse parking lot

WAYNE

- **Farmers' Market**, 685-4657, <http://waynefarmersmarket.weebly.com>, Saturday 9 am-noon, Town Green, at the Mill Pond, Main Street

WILTON

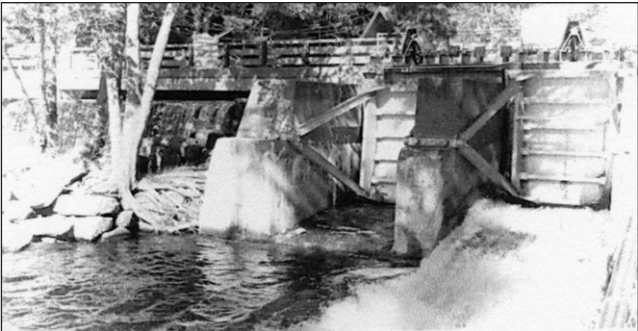
- **Wilton Farm & Home Museum**, 645-2091, 645-4578, www.thewiltonfarmandhomemuseum.org, Saturday 1-4 pm or by appointment, 10 Canal Street

WINSLOW

- **Fort Halifax on the Kennebec River**, historic fort tower, park, Route 201

WINTHROP

- **Norcross Park**, playground, picnic site, boat launch on Maranacook Lake
- **Farmers' Market**, 446-2899, Tuesday and Saturday 9 am-1 pm, town office parking lot, 17 Highland Avenue



The Dam Keeper Report

Welcome back to another Summertime in the Belgrades! The Dams Keeper Report will be a new weekly column to familiarize residents and visitors with not only the current water levels of our Belgrade Lakes, but the short and long term objectives. Based on long term forecasts and the whims of Mother Nature, your inter-local Dams Committee does try to maintain all of our lakes at full pond throughout the summer.

As of this writing, Tim at the village spillway dam has been very proactive allowing Great Pond to come up slowly from the winter draw-down while trying not to flood out Long Pond. The water flow is also ideal for fishing the spillways right now. Great Pond is now right at full pond, i.e. ready to flow over the spillway. Long Pond at the Wings Mill Dam is 1" above full pond and with today's forecast of .25" of rain, should come up to about 2" above full – an ideal balance for boaters as well as those still putting in their docks.

Welcome Home!

Dick Greenan
Secretary, Belgrade Lakes Watershed Dams Committee



Nancy Barron's "Chaos of Summer."

Go to Pg 18 for more information on L.C. Bates summer exhibit "Open Spaces: Reimagining Patoral Maine."

Additions/Updates/Corrections: Please contact Summertime in the Belgrades, 495-3777, with changes to this Directory.

J & M Logging, Inc.
Firewood
622-6353
Cut to order
in lengths from 14" to 23"

Green Certified Wood, Seasoned, & Ash
Cut, Split & Delivered
853 Civic Center Drive, Augusta, ME 04330

BELGRADE BOAT STORAGE
FREE LAKESIDE BOAT PICKUP & DELIVERY

DARE TO COMPARE
Best Prices on Inside, Outside Boat Storage, Shrinkwrapping & Winterization
Craig Pooler
Cell 207-314-3287 • Office 207-495-3421
Email: cpooler1@myfairpoint.net
www.BelgradeBoatStorage.com

WATCHES • DIAMONDS
EXPERT WATCH REPAIR • STONESETTING • GOLDSMITHING
Larsen's Jewelry
SERVING YOU SINCE 1962

57 MAIN STREET
WATERVILLE, MAINE 04901
MARK A. LARSEN

207-872-6301
1-800-697-1874



— Calendar —

Wednesday 6/1 through Saturday 6/4 – "Money Matters," 474-7176, Lakewood Theater, Route 201, Madison.

Friday 6/3 and Saturday 6/4 - Plant Sale, Yard Sale, 9 am-2 pm, Old South Church, 227 Main Street, Farmington.

Friday 6/3 through Sunday 6/5 - Northfield singing group performances, Friday 7:30 pm, Henderson Memorial Baptist Church, Academy Street, Farmington, Saturday 7 pm, Chesterville Meeting House, Sunday 4:30 pm Union Church, Belgrade Lakes, admission by donation, 778-5074.

Saturday 6/4 and Sunday 6/5 - Free Family Fishing Days, any person (except those whose license has been suspended or revoked) may fish without a license, statewide.

Saturday 6/4 and Sunday 6/5 - 37th Annual Spring Appaloosa Horse Show, free and open to the public, 368-4914, Skowhegan Fairgrounds, Route 201, Skowhegan.

Saturday 6/4 and Sunday 6/5 – 2016 Maine Fiber Frolic, 16th Annual, great family outing, sheep, llamas, alpacas, goats, rabbits, fleece/fiber products, sheep and alpaca shearing, shows, drills, demonstrations, parades, children's area, educational presentations and much more; food concessions available, picnic tables, most exhibits under cover, 9 am-4 pm, adults \$5, seniors \$2, children under 12 free, www.fiberfrolic.com, Windsor Fairgrounds, Route 32, Windsor.

Saturday 6/4 - Bloomfield Garden Club's 2016 Annual Plant Sale, rain or shine, 8-11 am, Skowhegan Savings Bank, Madison Avenue and Pleasant Street, Skowhegan.

Saturday 6/4 - Cruisin' For a Cure Car Show, to benefit Maine Children's Cancer Program, food, prizes, ribbons, trophies and more, many classes, \$10 per entrant, rain or shine, registration 8-10 am, show time 10 am-2 pm, Faith Evangelical Free Church, 250 Kennedy

Memorial Drive, Waterville.

Saturday 6/4 - The Color Dash, the first annual color dash through historic downtown Augusta, to benefit the Kennebec Valley Chamber of Commerce and the Augusta Downtown Alliance, packet pickup starts at 7 am, dash at 8 am, color explosion 9:30 am, register at CD5K.com, 623-4559, 16 Cony Street, Augusta.

Saturday 6/4 – 20th Annual Paddle for Pine Tree Camp, paddle with a purpose by raising pledges to benefit campers with disabilities; 7-mile, two-hour paddle on the Kennebec River, Solon to North Anson, family-oriented, appropriate for all ages, skill levels and abilities, followed by a celebratory barbecue and free time, \$100 minimum pledge, register at www.pine-treesociety.org, 443-3341, to reserve a campsite 643-2324, 8 am registration for paddle, starts at 9:30 am at Evergreen Campground, Solon.

Saturday 6/4 – Morning Bird Walk to celebrate National Trails Day, 8 am, on the beautiful trails on the Good Will-Hinckley campus with a museum expert, bring your own binoculars; Trail Walk 12:30 pm with museum guide, all events free and open to the public 238-4250, L.C. Bates Museum, Route 201, Hinckley.

Saturday 6/4 – Celebrate National Trails Day, for information about programs contact local trails and recreation associations listed on page 17 in Summertime in the Belgrades, including Kennebec Messalonskee Trails, 592-0004, Waterville and Skowhegan Parks and Recreation Department, www.skowhegan.org, 474-6901, Skowhegan.

Saturday 6/4 - Waterville Squadron Civil Air Patrol, CAP aircraft on display, drill and emergency services demonstrations, refreshments available, 10 am-2 pm, 509-6735, Robert LaFleur Airport, 2 LaFleur Road, Waterville.

Sunday 6/5 through Sunday 6/19 - Snow Pond Music Festival, featuring special performances from the Frederick L. Hempke Saxophone Institute and the Maine Chamber Music Seminar, Ted Atkatz Percussion Seminar and Composers' Workshop; 465-3739, 476-6976, 8 Goldenrod Lane, Sidney.

Monday 6/6 - Chamber Golf Classic, sponsored by the Mid-Maine Chamber of Commerce, rain date June 9, 11 am, 873-3315, Waterville Country Club, Kennedy Memorial Drive, Oakland.

Thursday 6/9 through Sunday 6/12 - "Last Roundup of the Guacomole Queens," 474-7176, Lakewood Theater, Route 201, Madison.

Friday 6/10 through Sunday 6/12 - "Naughty Nana's Knickers," 873-7000, The Waterville Opera House, Main Street, Waterville

Friday 6/10 - The Lorraine Ouellette Trio, country, French, polka and Cajun, 2 and 7 pm, free admission, 946-5311, Araxine Wilkins Sawyer Memorial, 371 Sawyer Road, off Route 202, Greene.

Friday 6/10 - Concerto Concert, presented by the Snow Pond Music Festival, 6-8 pm, 465-3025, Alumni Hall, Snow Pond Center for the Arts, Route 23, 8 Goldenrod Lane, Sidney.

Saturday 6/11 and Sunday 6/12 - Giant Yard Sale, sponsored by the Monmouth Lions Club to benefit community projects, scholarship prizes, vision assistance, 933-5885, TJ's Restaurant, 963 Route 202, Monmouth.

Saturday 6/11 - Annual Yard Sale sponsored by the Friends of the Belgrade Public Library, 8 am-2 pm, 495-2101, Day's Real Estate, Route 27, Belgrade Lakes.

Saturday 6/11 - Book Sale at Kennebec Historical Society, 9 am-2 pm, 622-7718, 107 Winthrop Street, Augusta.

Saturday 6/11 - Antique Power Show, 862-2074, Skowhegan Fairgrounds, Madison Avenue, Skowhegan.

Saturday 6/11 - Somerset County Relay for Life, American Cancer Society, 735-3875, Skowhegan Fairgrounds, Route 201, Skowhegan.

Saturday 6/11 - Union Coffeehouse, featuring Simons & Goodwin, plus open mic hour, refreshments, \$5 donation at door, 7 pm, Union

Church, Route 27, downtown Belgrade Lakes.

Saturday 6/11 - Brick Church Concert, "The Press Guy," 7 pm, \$10, 21 Cape Cod Hill, New Sharon.

Sunday 6/12 - Second Sunday Workshop, dance and expressive arts therapy, free and open to the public, 2-4 pm, 622-3813, Harlow Gallery, 160 Water Street, Hallowell.

Tuesday 6/14 - Flag Day!!!

Tuesday 6/14 - USAF Langley Woods, quartets, quintets and larger groups, free concert, 7 pm, Emery Community Arts Center, 111 South Street, Farmington.

Wednesday 6/15 through Monday 7/4 - Whatever 2016 Family Festival and Kids' Day in Capitol Park, sponsored by the Kennebec Valley Chamber of Commerce, 38th annual celebration, activities and events for all ages, 623-4559, www.augustamaine.com, greater Augusta area.

Wednesday 6/15 - Old Fort Western, nation's oldest surviving wooden fort, open every day during Whatever Family Festival, daily tours and demonstrations, admission charged, 626-2385, Cony Street, Augusta.

Wednesday 6/15 - "The Tiffany Windows of Augusta's South Parish Congregational Church," by Earle Shettleworth, 6:30 pm, 9 Church Street, Augusta.

Wednesday 6/15 through Saturday 6/18 - Blistered Fingers Family Bluegrass Music Festival, a dozen great bands, giant tent, food, camping areas, fun, children love bluegrass - great family event, children 16 and under free with adult, 873-6539, Fairgrounds, Litchfield.

Thursday 6/16 - 14th Annual Golf Fore A Cause, to benefit Spectrum Generations Programs, such as Meals on Wheels, that help seniors and disabled adults remain healthy, independent and at home, 9 am check in, 10 am tee time, registration due by June 13, 620-1677, Waterville Country Club, Kennedy Memorial Drive, Oakland



MAINE~LY ELDER CARE

"Caring for the ones who cared for us"



In - Home Nursing • Personal Care Services • Homemakers
• Emergency Response Systems • Transportation Services

STATE REGISTERED PERSONAL CARE
AND HOME MAKER AGENCY

465-3249

28 Center St., Oakland, Me 04963

www.Maine-lyElderCare.com

denise@Maine-lyElderCare.com

DAY'S REAL ESTATE

"The Waterfront Specialists" 207-495-3111

262 Augusta Road (Route 27) • Belgrade Lakes, Maine 04918 •

Web: www.daysrealestate.com • e-mail: daysrealestate@roadrunner.com



MESSALONSKEE LAKE ~ Spacious 3 BR + loft cottage at water's edge. Open concept, pine interior & private dock. Wonderful location. Come make your summer memories. **\$219,000**



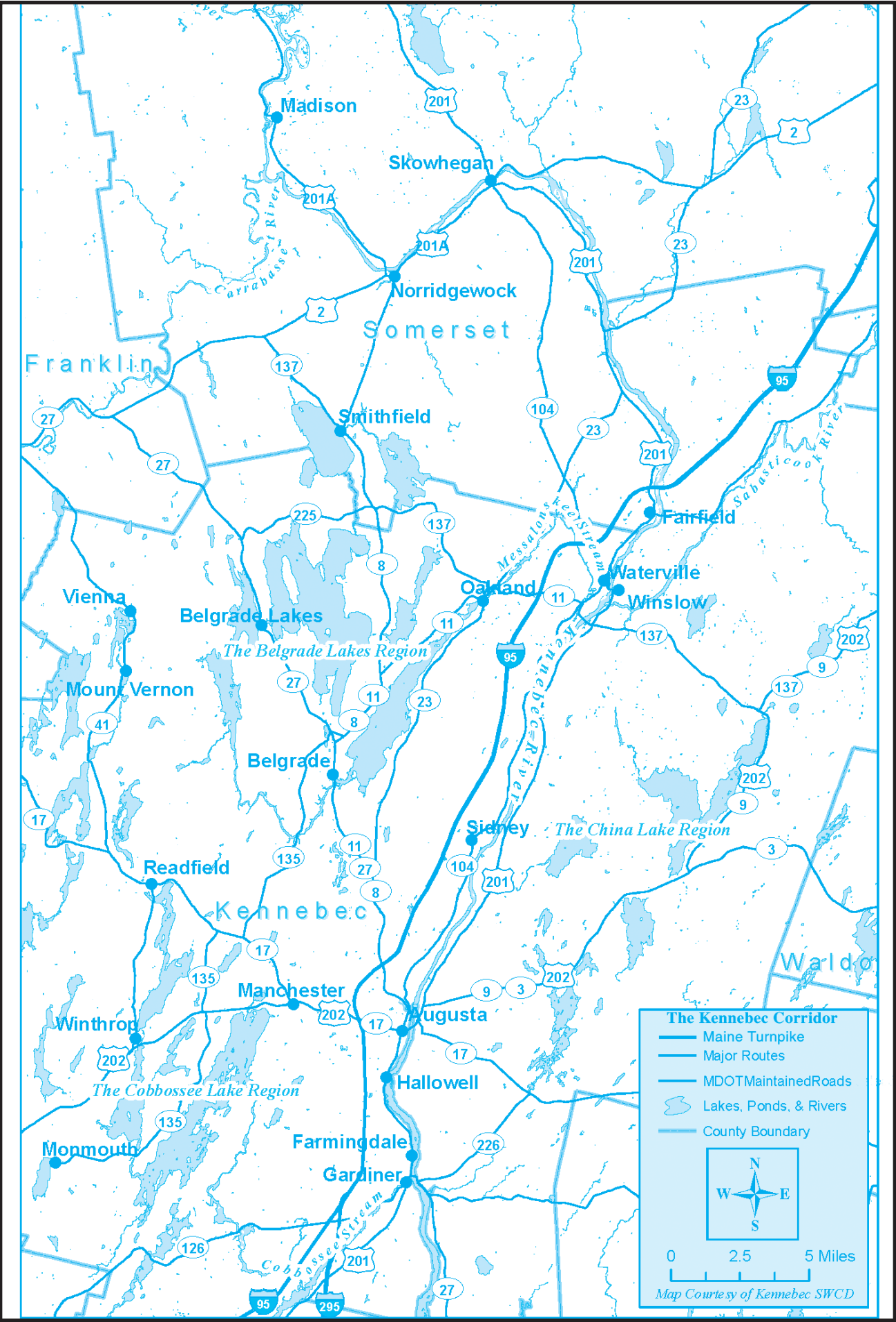
POCASSET LAKE ~ Custom-built 4 BR Colonial in picturesque subdivision with fireplace, lg deck, 266' +/- shorefront, west exposure & lots of common area for your enjoyment. **\$679,900**



McGRATH POND ~ Custom-built & spacious waterfront home with 3 BR, open concept, cathedral ceilings, farmer's porch, deck, family room, dock & 208' +/- shorefront. **\$449,900**



Kennebec Corridor

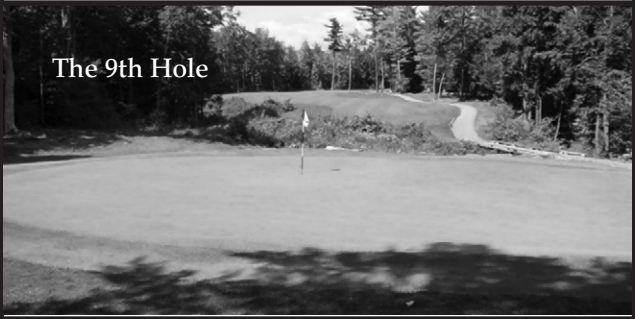


THIRTY-SIX
GREAT REASONS
MAINE'S ONLY 36-HOLE
PUBLIC GOLF COURSE
THE LARGEST GOLF FACILITY
NORTH OF BOSTON

Championship Golf, Full Pro Shop,
Driving Range, & Modern Clubhouse.
Groups Welcome

Natanis
GOLF COURSE

Webber Pond Road,
Vassalboro, ME • 207-622-3561



LakeHouse™
Renovations

Design • Build • Renovate



Traditional Style Camps,
Cottages and Lakefront Homes
207.242.3663

www.lakehousedesignbuild.com



ACME LAND SURVEYING, LLC

Professional Land Surveyors – Professional Foresters
Property Surveys, Subdivisions, Topographic Surveys, MLIs,
Elevation Certificates/LOMs, ALTA/ACS Surveys,
Deed Research, Wetland Delineation, Forest Management

108 Fairbanks Rd., Suite 5
Farmington, ME 04938

Website: www.acmelandsurveying.com

Tel. (207) 778-4081

Toll Free (800) 778-4081

Email: info@acmelandsurveying.com

Expanded in 2014 to Better Serve Our Customers



**Belgrade Lakes
Marine & Storage, Inc.**

Winter Storage for Summer Vehicles

Secure newer storage facilities accommodate boats on trailers,
autos, and the largest RVs in 3 buildings totaling over 21,000 sq. ft.
Electrical charging outlets are available. Reasonable rates for real
protection from extreme winter storms and sun damage.

207-495-2378 • www.belgradelakesmarine.com

366 Augusta Road, Route 27, Belgrade, ME

Whatever needs updating at your house, we
have the **home equity loan** to get you started.

| 5-year | 10-year |
|------------------------|------------------------|
| 4.21% APR ¹ | 4.61% APR ¹ |

Apply Today! Stop by your local Maine State Credit Union branch
or call us at 623-1851.

¹The rate listed above is a fixed rate for a second mortgage. Closing costs and certain
property/equity requirements apply. Rates presented above are for individuals with credit
scores of 680 or higher. Individuals with credit scores of 679 and lower will receive a rate of
1.00% higher for each loan type. Loans are subject to approval and certain conditions may
apply. *The annual percentage rate (APR) for the 5-year home equity loan is 4.213% and is
4.612% for the 10-year fixed home equity loan. The APR is subject to change at anytime.
Repayments for the 5-year loan are \$18.42 per \$1,000 for 60 months and \$10.36 per \$1,000
for 120 months for the 10-year loan. Federally insured by NCUA. Equal Housing Lender.



Doing Business the Maine Way



207-474-2420

Design - Install - Maintain

Designing landscapes to beautify your property and protect our natural resources - *Installing* these landscapes in a manner that promotes sustainability and prevents erosion - *Maintaining* these landscape so your investment lasts a life time



Licensed, Certified & Accredited
For All Of Your Landscaping Needs



www.lynchlandscaping.com



**Showing the Best of World
and American Cinema**

17 Railroad Square, Waterville, Maine, 04901

24-hour movie info:

207-873-6526

www.railroadsquarecinema.com



Home of the
Maine International
Film Festival
(July 8 - 17, 2016)
www.MIFF.org



**Picasso:
The Vollard Suite**

June 2, 2016 - August 21, 2016

Davis Gallery

Colby College Museum of Art, Waterville, Maine
colby.edu/museum 207.859.5600



ST. MICHAEL SCHOOL

56 Sewall Street, Augusta, ME 04330
207.623.3491 www.smsmaine.org

**NEW Fall 2016...
PRE-K for 3 year-olds!**

St. Michael School will be opening a new Pre-School Program for 3 year-old children starting in the fall. This Program will have a curriculum, daily schedule and an overall program that is consistent with the mission and values that have been associated with a St. Michael School education. Register your child TODAY!



*A Legacy of Excellence,
a Foundation for the Future.*



Belgrade Vacation Rentals

CAMP & COTTAGE RENTALS

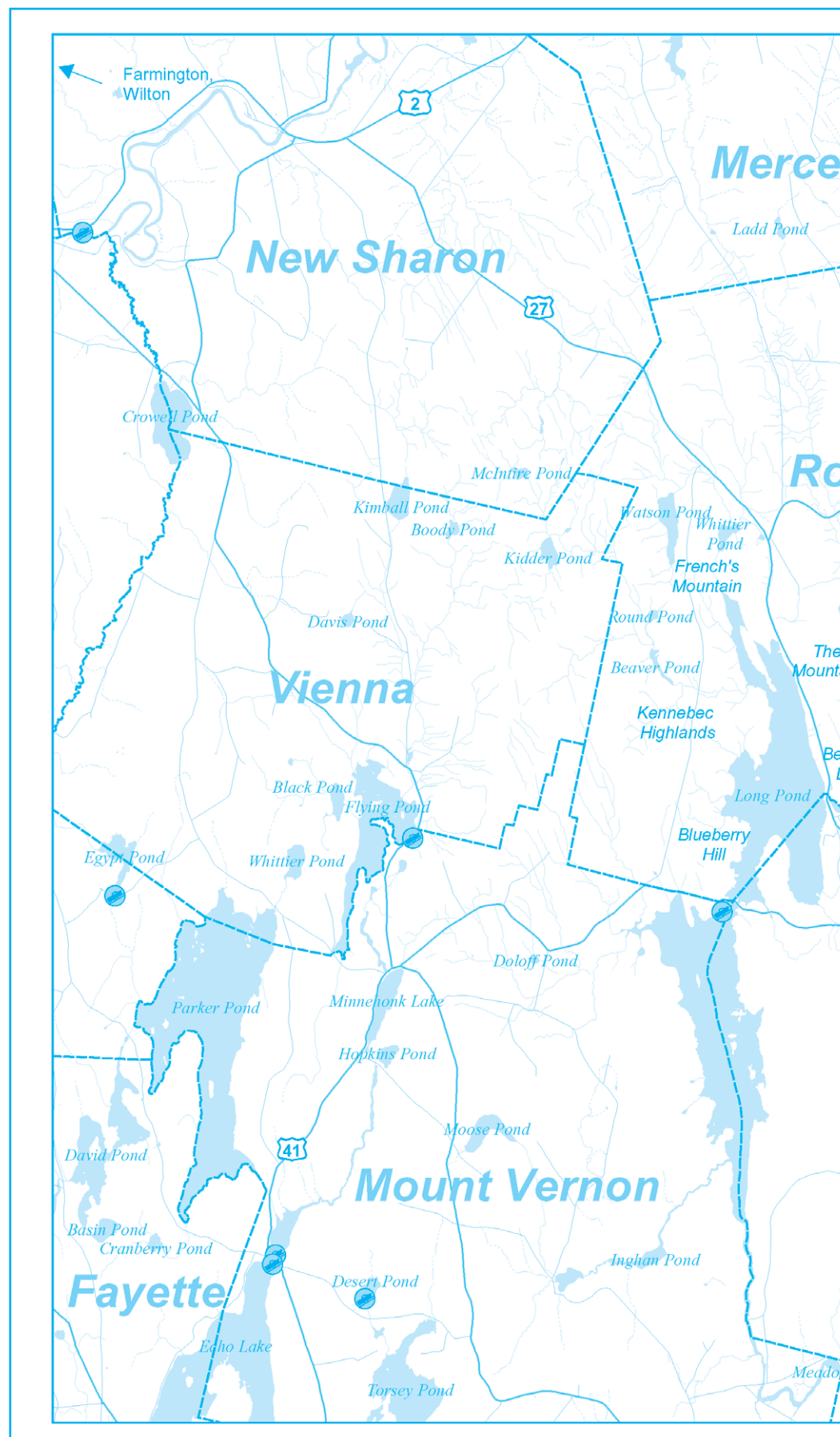
Located next to Pete's Pig Barbecue!

Contact Us Today!

(207) 495-4011

www.BelgradeVacationRentals.com

Own A Property? We Will Rent it for You!



"Your Sight is Our Vision"

- Comprehensive Eye Exams
- Eyewear Center / Contact Lenses
- State of the Art Cataract Surgery
- Retinal Diseases and Glaucoma
- LASIK Refractive Surgery
- Laser Surgery
- Oculoplastic Diseases
- Botox, Juvederm and Latisse

• Ambulatory Surgery Center

www.Maine2020.com



Steve R. Witkin, M.D.



Peter C. Kohler, M.D.



James R. Putnam, M.D.



Marc B. Daniels, M.D.



Helen Bell-Necevski, O.D.



Lorie Lepley Parks, O.D.



Michael C. Parks, O.D.



Ian M. Jones, O.D.

325A Kennedy Memorial Drive
Waterville, Maine 04901

873-2731
(800) 660-3403

RIVERSIDE FARM RESTAURANT & WINE MARKET

Restaurant Hours:

Brunch

Sundays - 10am-2pm

Lunch

Tuesdays - Saturdays - 11am-3pm

Dinner

Thursdays -- Sunday - 5:30pm-8:30pm

Wine Market Hours:

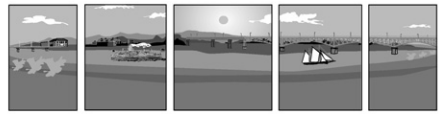
Tuesdays - Fridays - 10am-6pm

Saturday - 10am-4pm

**291 Fairfield Street
Oakland, ME 04963**

For reservations call 207-465-4439

RiversideFarmMarket.com



RIVERFRONT BARBEQUE & GRILLE

WORLD CLASS BARBEQUE

SEAFOOD, PASTA, & VEGETARIAN ENTREES

207.622.8899

300 WATER STREET, AUGUSTA, MAINE

WWW.RIVERFRONTBBQ.COM

FULL SERVICE DINING * CATERING * BULK TAKE OUT



The Gin Mill

Augusta, Maine

Augusta's finest upscale lounge featuring fine wine, martinis, and over 100 brands of beer from Germany to Japan

Thursday thru Saturday 3:00pm until Midnight,
Above the Riverfront Barbeque & Grille
at 300 Water Street
207.620.9200

Lakepoint REAL ESTATE

"Put The Team to Work For You"

207.495.3700

GAIL RIZZO 207-242-8119
gail@gailrizzo.com



PAT DONAHUE 207-730-2331
pldcamp@msn.com



NEW LISTING

GREAT POND, BELGRADE:
50' lakefront. 2BR/1BA
Post and Beam Cottage.
Covered porch with sunset
views. Short distance to
the Village. #1264450
\$409,000



**GREAT POND OUTLET
(MILL STREAM), ROME:**
22'x24' two bay gar
w/room above. 1.19 acres,
179' +/- lakefront w/boat-
house. Pvt building lot.
#1230336 \$225,000

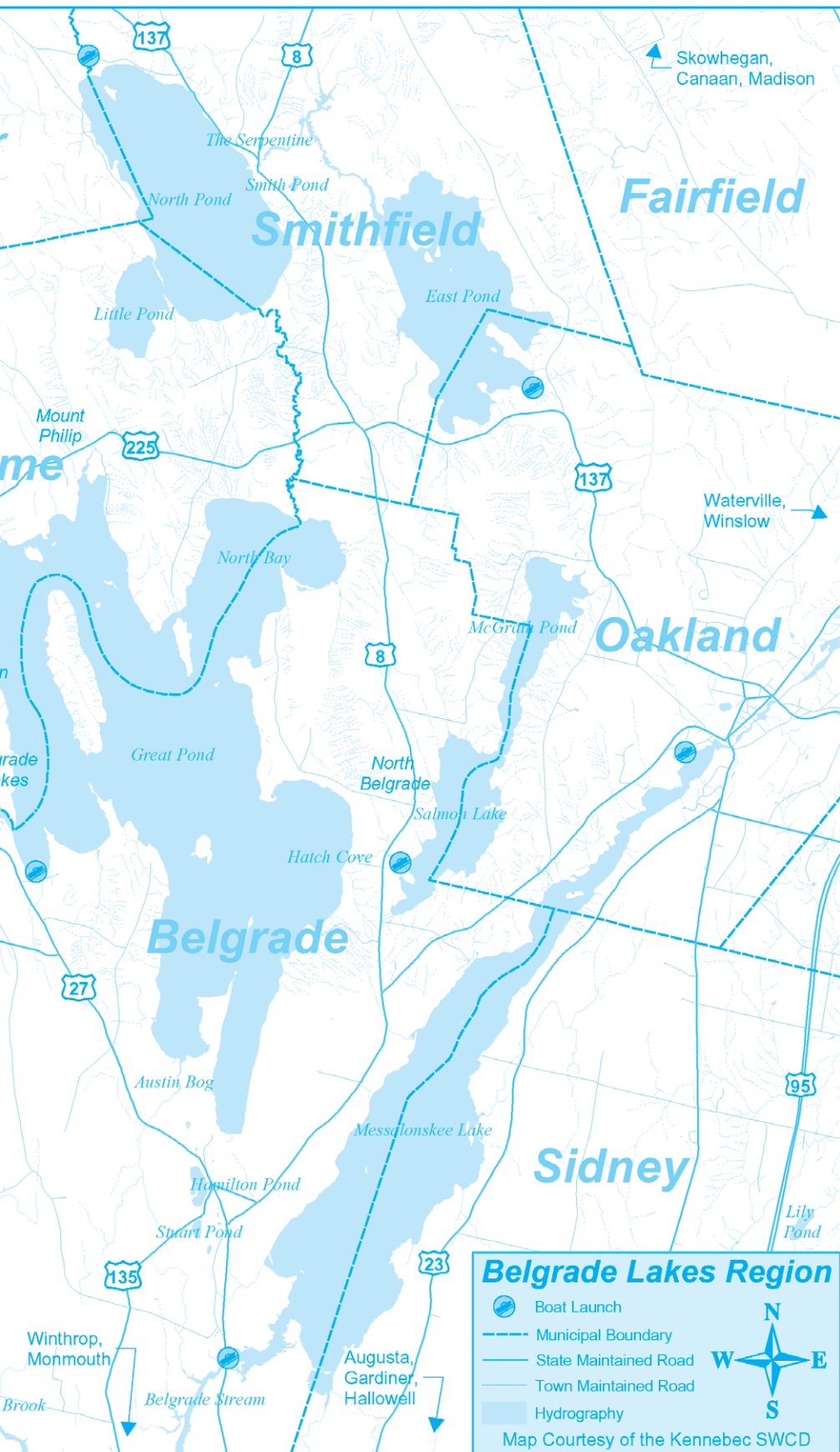


LONG POND, ROME: Yr-
md 3BR/3BA, DR, LR
w/fireplace, deck, 200'
lakefront, 2 car gar, walking
distance to Belgrade Lakes
village. #1248911
\$599,900



**GREAT POND,
BELGRADE:** 2BR/1BA
Part of Hoyt Island Camps
sharing 15 acres, 2100'
waterfront with own dock,
club house, laundry.
#1230934 \$165,000

221 Main Street, Belgrade Lakes, Maine 04918



Visit the Businesses on MARINA DR



sadiesboathouse@hotmail.com

• 207-495-4045 •

Like us on Facebook!

Open Friday & Saturday

from 5 PM - 9 PM

Family Fun Days BOAT RENTALS



SALES • SERVICE • STORAGE • RENTAL

**Don't Be Left
Standing On
The Dock**

**Call for
Reservations:
495-2213**

www.greatpondmarina.com
Belgrade Lakes

Open Every Day 8-5

ShoreStation® The original since 1959

Why Shore Station?
Docks & Boat Lifts
Dependable, Rugged,

Docks = Stability
A-frame stance handles
a 6,000lb boat

Accessories Galore

Easy installation

Brown Dock Services www.browndockservices.com

George: 495.2600 Jason: 316.7514

Display Docks & Lifts at Great Pond Marina



ShoreStation® The original since 1959

Clark Marine

Manchester - Monmouth - Belgrade

We Service
Honda, Mercury, Evinrude,
and Yamaha Motors

Keeping You On The Water!

207-622-7011

57 Puddledock Rd.
Manchester, Me.



Check-Out Our
New Boats



www.ClarkMarineMaine.com

G & L CONTRACTING

- New Construction
- Additions
- Dock Installations
- Construction

www.gandlcontractingmaine.com

207-495-9009

Lakeside Cottage Rentals



**Exclusive
Lakeside
Rentals in the
Belgrade
Lakes Region**

Located off Rt 27 in Belgrade Lakes

(207) 495-4046

www.LCRentals.com

Waterfront Property Owners

We offer full service rental management services. Please call if you are interested in having us manage your home.



— Upcoming —

JUNE

Trek Across Maine, the 180-mile ride from the mountains of Bethel to the sea at Belfast bicycle fundraiser to benefit the American Lung Association is scheduled for June 17-19. Volunteers needed. 1-800-499-LUNG, est. 0312

Gaslight Theater in Hallowell will perform "Are You Being Served?" based on a popular British television comedy, on June 17-19 and 24-26. 626-3698

Relay For Life of Greater Augusta will be held Saturday, June 18 at Windsor Fairgrounds, Relay for Life is the world's largest fundraising event to fight every cancer in every community. Register online at relayforlife.org or call 1 800-227-2345.

An Enchanted Evening in the Gardens at Fieldstone Gardens in Vassalboro to benefit Hospice Volunteers of Waterville Area is scheduled for June 23, 5-8 pm. 873-3615

Dangerous Liaisons, a Franco-American Masquerade Ball with Local Celebrity Auction will be held Friday, June 24, 7 pm-midnight at le Club Calumet to benefit the Augusta Downtown Alliance and the Colonial Theatre. Business attire and mask required, \$25 per person. Tickets available at Calumet Club and participating businesses.

Kid's Day in Capitol Park in Augusta, offering 70+ events from 11 am-3 pm and an evening concert at 6 pm will be held on Saturday, June 25. 623-4559

A Strawberry Festival will take place on Saturday, June 25 at the Washburn-Norlands Living History Center, Maine's oldest living history farm and museum, in Livermore from 11 am-4

pm, with crafts, tours, shortcake and more. 897-4366

The Smithfield Volunteer Fire Department Annual BBQ will be held on Saturday, June 25, 11 am 'til gone to raise funds for the SVFD.

The 2016 summer repertory season at the **Theater at Monmouth**, *Vive la France!*, starts on Saturday, June 25 with the play "Cyrano." 933-9999

The 8th Annual Kennebec River Rail Trail Marathon, Marathon Relay and 5K Race/Walk will be held on Sunday, June 26, starting at the City Center in Augusta at 7:30 am. kennebecrerrailtrail.org

The 2016 Kingfield POPS and Arts Festival is set for June 26 with the Bangor Symphony Orchestra. Tickets on sale now in Kingfield and Farmington at Tranten's Stores and Skowhegan Savings Banks locations.

JULY

The 19th Annual Maine International Film Festival will take place July 8-17 in Waterville - 10 days, 100 films, 50 filmmakers and many special guests. Order passes, make donations or volunteer at www.miff.org or call 861-8138.

Are You Buff Enough? How to Become LakeSmart-er Workshop 2016, sponsored by the North Pond Association, is scheduled for Saturday, July 9, 9 am. 362-5533

BRIO, featuring Matt Loosigian, Deb Hensley and Martin Swinger, will perform at the Union Coffeehouse in Belgrade Lakes on Saturday, July 9 at 7 pm.

The 20th Annual Kennebec Valley Chamber of Commerce Golf Tournament to benefit the Kennebec Leadership Institute is scheduled for Monday, July 11 at the Augusta Country Club. Sponsorship opportunities are available. 623-4559

On July 16 the Annual Yard Sale by the United Methodist Women will be held at the Union Church in Belgrade Lakes.

Farmington Summer Fest, featuring the Great Float Race, a Talent Show and a Bed Race will be held on Friday and Saturday, July 22 and 23 in downtown Farmington. 491-5533

Skowhegan Fairgrounds is the site of **The Kneading Conference** on July 28 and 29 and the Artisan Bread Fair on July 30. 276-0545

The Friends of the Belgrade Public Library 5K Walk, Jog or Run starts at the Library in Belgrade at 8 am; registration at the Central School at 7:30 am. 495-3508

AUGUST

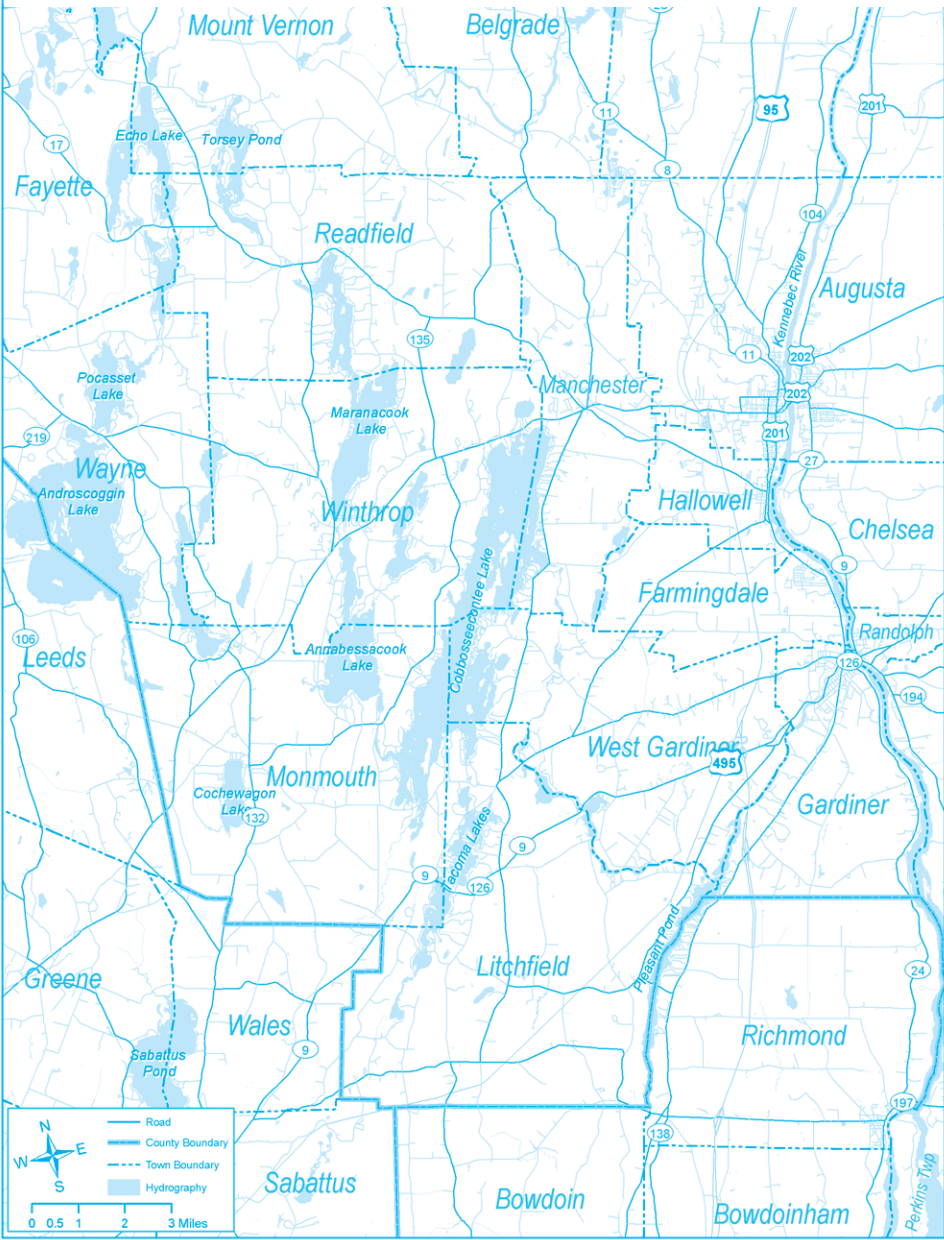
Taste of Waterville - food, fun, music and dining outdoors - will be held on Wednesday, August 3 in downtown Waterville. 873-3315

Adult Music Camp will be held August 22-28 at New England Music Camp in Sidney. 465-3025

The 47th Blistered Fingers Family Bluegrass Music Festival will take place August 24-27 at the Litchfield Fairgrounds. 873-6539



Cobbossee Watershed



Smile

YOU'RE AMONG FRIENDS AT KENNEBEC SAVINGS

You know us ... maybe not as Directors of Kennebec Savings Bank, but as your neighbors, local business people and members of your community organizations.



Kennebec Savings Bank has been serving and supporting you under the same name for over 145 years. We're a mutual organization; we belong to the community.

Our decisions are always about our customers' best interests.

Directors (L to R) Diane Hastings, Mark Johnston, Dick O'Connor, Mary Denison, Andrew Silsby, Doug Reinhardt, Bill Mitchell, Norm Elvin, Chuck Hays, Jr., & Bill Sprague, Jr.

Kennebec Savings Bank



Augusta 622-5801 • Waterville 872-5563
Winthrop 377-5801 • Farmingdale 588-5801
www.kennebecsavings.com





—Conservation Too—

Rule number one of lakeside living is to never, ever put anything into the water that you wouldn't want to drink, swim in, or find in the fish you catch and eat. If you wish your water to remain clear, not green, and free from algae and aquatic plants, remember to keep your property's soil out of the water. Erosion carries harmful pesticides and fertilizers into the lake and associated waterways. With soil erosion comes murky water, reduced oxygen levels for aquatic life, loss of aquatic habitat, sedimentation and loss of valuable waterfront property. And that's not good! Here's what you can do:

1. Consider a natural shoreline. Natural shorelines are buffers that generally include erosion-control fabrics, native vegetation, and rocks at the water's edge that protect the property from waves and erosion while improving ecological features and the shoreline's integrity.

2. Minimize exposure of the soil to lake water. At the waterfront, leave as many aquatic plants in place as possible to hold bottom sediments and to protect your shoreline from wind and ice action, as well as waves. Follow posted boating speed limits and obey no-wake zones.

3. Cover bare soil. Plant bare soil as quickly as possible with an appropriate vegetative cover,

Keep Your Soil Where it Belongs, Not in the Water!

Guest article by Catherine Perham, NRCS



such as sod or seed. Mulch the area with straw to prevent erosion until the seeds germinate, then leave the living root in the soil.

4. Make use of woody debris. Incorporate large woody debris, such as stumps, logs and tree trunks to provide essential aquatic habitat and stabilize shorelines.

5. Add some aquatic and wetland plants. If you have an existing structural seawall and are not ready to try a completely natural shoreline, supplement the area on the waterfront side with native aquatic vegetation to help restore lost habitat and on the upland side incorporate a

plant buffer. Contact the KCSWCD or your local USDA-NRCS for suggested plants. Many local nurseries are also beginning to carry such plants. They are becoming familiar with "LakeSmart principles" and can help you apply those.

6. Control invasive plants on your property. With the help of the KCSWCD and the USDA-NRCS, you can learn how to identify and remove aquatic invasive plant species without spreading their growth. Contact the Maine DEP or their website <http://www.maine.gov/dep/water/invasives/invknow.html> Contact your local watershed association for good reference material. Visit the Maine Lakes Resource Center in Belgrade Village.

You can also begin to identify and manage terrestrial invasives. These are the plants that grow around your property and compete with native species. Check the Maine Natural Areas Program website for good reference material. http://www.maine.gov/dacf/mnap/features/invasive_plants/inv sheets.htm#currinv

Now, enjoy your clean, healthy water!



For information about any of our conservation projects please contact Dale Finseth at 622-7847, x 3 or check our website at www.kcswwcd.org

Tadpole Patrol- Summer Fun in the Watershed!



Tadpole Patrol is the Friends of the Cobbossee Watershed's innovative and immersive learning experience aboard the OTTER II, our 22' pontoon boat. For 11 years, children have boarded our "floating classroom" to learn about lake ecology and

how to test and protect water quality. Today, we offer five different versions of Tadpole Patrol for children of all ages to explore, play and learn outdoors in the Cobbossee Watershed!

The Tadpole Patrol program offers five different levels of lake exploration. Level 1 is the original Tadpole Patrol program geared for children entering grades 2-4. At this level, children will experience the ecology of the lake through exploration, observing wildlife both in and out of the water and learn the basics of water testing with professional equipment! The second level is TP II-Lake Science Investigators (LSI) and is for children

entering grades 4-6. Level II investigators become "science investigators" as they practice their observation and data collection skills with their own keepsake journal. Participants are able to view aquatic life using an underwater camera and begin to learn about identifying native and non-native plant species as well as the threat of invasive aquatic plants to the area. TP3- Jr. Lake Monitors is the third level offered for youth entering grades 6 and up. Level 3 participants continue their scientific investigations as they are educated to conduct proper water quality data measurements themselves and will compare their collected data with data recorded by the scientists at Cobbossee Watershed District. Our fourth version, Spotter's Amphibious Adventures is for children ages 8 and older where both land and water are explored! Participants cruise with the Friends to a private island to explore, learn all about the importance of riparian areas and the basics of "Leave No Trace" principles. Lastly, we've heard for years that parents would like to join the Friends on our "floating classroom"! What better way to enjoy a beautiful summer day than out on

the lakes with the whole family! Families enjoy an 1-hour excursion where "kids of all ages" can observe wildlife above and below the water, share historical lake facts and experience water monitoring with professional equipment.

All Tadpole Patrol programs take place aboard the Friend's 22' pontoon boat, the Otter II. This "floating classroom" enables all participants to have a unique, interactive, and most importantly FUN experience that teaches them about the importance of watershed protection and water quality. The Friend's 2016 Tadpole Patrol programs are generously supported by Clark Marine, Augusta Fuel Company and Kennebec Savings Bank. Please visit the Friends website at www.watershedfriends.com for the 2016 Tadpole Patrol schedule and registration forms.



GENERATORS of MAINE
495-2285

Doug Sawyer, Owner
Cell: 207-215-0617

doug@generatorsofmaine.com

www.generatorsofmaine.com

262 Augusta Road • Belgrade, Maine



KOHLER
Generators
Authorized Dealer

Call Us For Boat Tops, Covers & Interiors

Keep You and Your Boat Clean & Dry
Protect the Interior
Repairs & Alterations
Welcome!



Pontoon Boats Too!

WATERVILLE UPHOLSTERY & CANVAS
(Waterville Auto Top)

1 1/2 Miles West Exit 127, I-95, KMD, Oakland
465-7847



Bear Spring Camps



- Waterfront cottages
- Home-style meals
- Bass, pike, and brown-trout fishing
- Boats, motors, docks
- Sandy beach
- 3.5 hours from Boston
- May-September

on Great Pond in the
Belgrade Lakes Region
www.bearspringcamps.com
207-397-2341



BELGRADE REGIONAL HEALTH CENTER

*New Patients
of All Ages
Welcome*

4 Clement Way, Belgrade
207-495-3323 | BelgradeCHC.org



**ALDEN
CAMPS**
Est. 1911



- Lobster Bakes on Friday nights by Reservation
- Lakeside Cottages • Boats & Motors
- Full American Plan
- Dining on the Porch by reservation Saturday through Wednesday

3 Alden Camps Cove
Oakland, Me 04963
(207-465-7703)

E-mail: info@aldencamps.com • Website: www.aldencamps.com

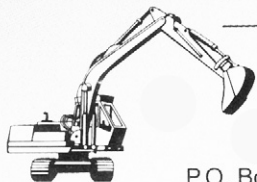


BOOKS, PUZZLES, TOYS, GAMES

A store for children of all ages,
the young and the young at heart.

Open Monday 12 to 5 • Tues. - Sat. 9 to 5
52 Main St. Waterville 872-4543

DAVID STEVENS
Excavation & Septic Systems



LOAM GRAVEL SAND

465-3815
Cell: 314-0314

P.O. Box 146 • Belgrade, Maine 04917

CASTLE ISLAND CAMPS

Boats, Daily or
Weekly

Boats, Bait,
Tackle, Gas,
Kayaks



495-3312
Rentals for
Long Pond Only

David J. Auclair
www.auclaircycle.com

AUCLAIR CYCLE & SKI

64-66 BANGOR ST. AUGUSTA, ME 04330
623-4351 / 800-734-7171 • Fast Professional Service
Bicycles • Skateboards • Roof Racks • Rentals

The Jewelry Enthusiast's Jeweler.

L. TARDIF JEWELER
62 Main Street Waterville, Me.



Tues - Sat

est. 1935

9 - 5

— Accommodations —

Alden Camps, lakeside cottages on East Pond, established 1911, American Plan meals, boat and motor rentals, dining and lobster bake open to public by reservation, 3 Alden Camps Cove, Oakland, 465-7703, www.aldencamps.com

Bear Spring Camps, waterfront cottages on Great Pond, home-style meals, sandy beach, boats, motors, docks, 60 Jamaica Point Road, Rome, 397-2341, www.bearspringcamps.com

Castle Island Camps, cottages on the water, Long Pond, American Plan meals, boat and kayak rentals, Castle Island Road, Belgrade Lakes, 495-3312, www.castleislandcamps.com

Whisperwood Cottages, overlooking Salmon Lake, American Plan meals, fishing boat rentals, open to the public for dining by

reservation only, 103 Taylor Woods Road, North Belgrade, 465-3983, www.whisperwoodlodge.com

Wings Hill Inn, historic Inn & Restaurant, casually elegant accommodations, centrally located in Belgrade Lakes Village, Route 27, Belgrade Lakes, 495-2400, 866-495-2400, www.wing-shillinn.com

Belgrade Vacation Rentals, lakeside camp and cottage rentals throughout the area, long and short stays, many size accommodations and rates, 81 Main Street, downtown Belgrade Lakes, 495-4011, www.belgradevacationrentals.com

Lakeside Cottage Rentals, featuring over 70 private homes, 24/7 customer friendly service, 25 Marina Drive, Belgrade Lakes, 592-5577, 495-4046, www.lcrentals.com



Notebook

New Trek Across Maine - 2-Day Ride Option

• Enjoy the Trek Across Maine in a new way! The 2-day option provides all the entertainment and fun associated with the traditional 3-day Trek, with shorter mileage - 97 miles - and a shorter time commitment. The ride begins at Colby College on Saturday, June 18 and finishes on the coast in Belfast with all other Trek cyclists on Sunday, June 19. Overnight accommodations at Colby College and transportation back to Colby on Sunday are available. For details visit BikeTrekNewEngland.org, 1-800-499-LUNG, ext. 0312

Holocaust and Human Rights Center of Maine Annual Meeting

• Join the Board and staff of the Holocaust and Human Rights Center of Maine for the 28th Annual Meeting, an event honoring students and individuals in Maine who are doing outstanding work on Holocaust and human rights awareness and education. The meeting will be on Sunday, June 5, 12-3 pm, at the Woodlands Club in Falmouth. The HHRC is located at the University of Maine in Augusta campus. 621-3530

Maine Lakes Conference Set At Unity College

• The 46th Annual Maine Lakes Conference will be held on Saturday June 25 at Unity College Center for the Performing Arts. Keynote Speaker Holly Ewing of Bates College will address *Gloeotrichia echinulata* blooms and GLEON, the Global Lake Ecological Observatory Network, which helps scientists and citizens better understand and communicate the way lakes are responding to changing climate. Workshops and networking will take place throughout the day. The Conference is organized by the Maine Lakes Society. 495-2302

Pesticide Disposal Program

• Mainers are urged to sign up for free disposal of banned, unusable pesticides. This October, the Maine Department of Agriculture, Conservation and Forestry's Board of Pesticides Control will team up with the Maine Department of Environmental Protection to make available free collection sites in Presque Isle, Bangor, Augusta and Portland. Registration by September 25, 2015 mandatory; drop-ins not permitted. <http://www.thinkfirst-spraylast.org>, 287-2731

Augusta

• The Annual Whatever Family Festival sponsored by the Kennebec Valley Chamber of Commerce, will be

held June 15 through the 4th of July. Kid's Day in Capitol Park on June 25 needs volunteers to help with safety, parking, traffic control, decorating and clean up. All volunteers receive a free Whatever T-shirt. This is a great opportunity for responsible high school students to earn community service hours. Sign up today at info@AugustaMaine.com or 623-4559.

Belgrade

• Neighbors Driving Neighbors, working with the Mount Vernon Community Partnership, is a volunteer transportation system that matches people who need rides with volunteer drivers. The system includes the communities of Belgrade, Fayette, Mount Vernon, Vienna and Rome and provides rides to Augusta, Farmington, Lisbon Falls and Waterville for medical appointments, shopping and social events. 397-3752

Oakland

• All past graduates of Oakland High School, Williams High School and Messalonskee High School are invited to the Oakland Alumni Annual Banquet on Saturday, August 13 at the Waterville Elks Lodge, 76 Industrial Street, Waterville. Doors will open at 10:30 am, buffet lunch at noon. Tickets are \$18 per person and must be purchased in advance from Dana Wrigley, 453 Fairfield Street, Oakland 04963. For more information call Kelly Roderick at 465-2849

Phillips

• Meet Kate Braestrup, Kelly Payen-Rompchaud and Jeffrey Thomas at the 2nd Annual Readers, Writers and Runners 5K. Starts at 10 am at the Phillips Public Library. \$10 for pre-registration; \$15 day of race. There will be awards, raffles, food and live music. Phillips is on Route 4 north of Farmington

Skowhegan

• Horse Shows, free admission and open to the public, will be held throughout the summer at the Skowhegan Fairgrounds covered arena, as follows:

- June 4 and 5, 37 Annual Spring Appaloosa Horse Show
 - June 17-19, MHA Downeast Horse Show
 - June 25 and 26, NEPHC Showdown in Skowtown
 - APHA/All Breed Horse Show
 - July 8-10, 4-H Eastern States Tryouts
 - July 15-17, ASAM Summer Spectacular Horse Show
 - August 4-6 47 Annual State Appaloosa Horse Show
 - September 2-4, Mainly Hunters and Jumpers
 - September 10 and 11, AHAME Autumnfest Horse Show
 - September 16-18, Downeast Medal Finals
 - September 23-25, They Maine Event Horse Show
 - October 1, Special Olympics Maine Equestrian Competition
- www.showheganstatefair.com





Dining

Augusta

• **Riverfront Barbeque & Grille and Gin Mill Lounge**, world class barbeque, seafood, pasta and vegetarian entrees, full service dining, catering, bulk take out, 300 Water Street, Augusta, www.riverfrontbbq.com, 622-8899

Belgrade

- **Pete's Pig**, 81 Main Street, sandwiches and platters for picnic-style eating on the premises or to go, also offering a full range of catering, Main Street, Belgrade Lakes Village, 495-4095, www.petespig.com
- **Sadie's Boathouse Restaurant at Great Pond Marine**, hearty contemporary American fare, 25 Marina Drive, Belgrade Lakes, 495-4045, 242-1273
- **Whisperwood Lodge and Cottages**, Salmon Lake/McGrath Pond, homestyle cooking, traditional fishing camp diningroom, open to the public by reservation only, 103 Taylor Woods Road, Belgrade, 465-3983, www.whisperwoodlodge.com
- **Wings Hill Inn and Restaurant**, gourmet fine dining in historic inn, daily culinary chef's specialties, Route 27/Main Street, Belgrade Lakes Village, www.wingshillinn.com, 495-2400 or 800-

495-2400,

Manchester

• **Lakeside Orchards**, bakery, veggies, dairy products, drinks, 318 Readfield Road, Route 17, Manchester, 622-2479

Oakland

- **Alden Camps**, lunch or dinner by reservation Saturday-Wednesday space permitting, lobster bakes on Friday night by reservation, 3 Alden Camps Cove, Oakland, www.aldencamps.com, 465-7703
- **Riverside Farm Restaurant & Wine Market**, simple, whole-some food and drink since 1990, 291 Fairfield Street, Oakland, www.riversidefarmmarket.com, 465-4439

Oakland-Wines & Spirits

• **Tree Spirits**, tasting room for award winning wines and spirits made from local apples, pears and maple syrup, tours available, 152 Fairfield Street, Oakland, www.treespiritsofmaine.com

Smithfield

• **Smithfield Ice Cream Place**, lunch, dinner and dessert, 855 Village Road, smithfieldicecreamplace.com, 368-5039

Weekly Summer Races Return to Quarry Road Trails on June 7



The fourth annual Quarry Road Summer Race Series kicks off on Tuesday, June 7, with a 3K trail race at Waterville's Quarry Road Trails.

The series, a favorite amongst local runners, offers weekly races most Tuesday nights, starting on June 7 and continuing through August 16. Races start at 6 p.m. and distances alternate between 3K, 5K, and 8K. Free weekly fun runs for youth 12 and under are held at 5:30 p.m.

Runners can pre-register online for the entire nine-race series for \$35 at <http://www.quarryroadraces.com/registration.html>

Runners also can register for individual races for \$5 the day of starting at 5 p.m. All race proceeds benefit the Boys & Girls Clubs and YMCA of Greater Waterville.

Last summer, more than 250 runners participated in the series. Numbers are expected to rise in 2016, according to Race Director Patrick Guerette, who organizes the series with support from the Central Maine Striders running club.

"We're fortunate to have access to such an amazing facility right in our backyard," said Guerette of the Quarry Road multi-use trails. "Each year runners bring more and more friends to the series to try it out. They have a great time, and keep coming back."

Each week the overall Male and Female finishers will receive a gift card from that week's race sponsor. 2016 sponsors include The End Zone, Selah Tea, Downtown Smoothie, It's A Good Pizza, and Big G's Deli.

Series runners also compete for Overall and Age

Group awards sponsored by New Balance, with their best time at each of the three distances (3K, 5K, and 8K) totaled into the overall standings.

Fun run sponsor Inland Hospital provides healthy prizes for each youth that finishes the weekly fun run.

"The series is a great way to get in a workout with other runners from around Central Maine on some beautiful trails," said Brendan Gilpatrick, Central Maine Striders club vice president.

"The Quarry Road trail races are fun, family-friendly, and welcoming for runners of all abilities," said Alicia MacLeay, a Central Maine Striders board member and series participant. "And the trails add an extra level of interest and challenge. You'll see everyone out there from kids completing their first race to top local runners blazing down the trails."

Series Schedule Featured races start at 6 p.m. Day-of registration opens at 5 p.m. Kids fun runs start at 5:30 p.m.

June 7: 3K; June 14: 5K; June 21: 8K; June 28: Makeup or Course Previews July 5: 3K; July 12: 5K; July 19: 8K; July 26: Makeup or Course Previews August 2: 8K; August 9: 5K; August 16: 3K & Awards August 23: Makeup or Course Previews

For more info on the Quarry Road Summer Race Series, please visit www.quarryroadraces.com.



Fayette – David Pond – Immaculate custom 4 bedroom/3 bath lake-front Ranch with walkout basement on tranquil and pristine David Pond. Open floor plan with hardwood floors, Anderson windows, Cherry cabinets, granite and stainless kitchen, radiant heat, ductless A/C, security system, 12 kva generator, oversized garage, screen porch, 3.8 acres, 201' frontage. **\$473,000**. Adjoining 3.1 waterfront lot also available for only **\$125,000**.

Call Brian Rizzo at Rizzo Mattson, Realtors

COLDWELL BANKER

219 Capitol St., Augusta 622-9000 ~ 215-9793
brizzo@rizzomattson.com

Whisperwood Lodge & Cottages

Fishing Boat Rentals on Salmon Lake & McGrath Pond

Located on the South end of Salmon Lake in North Belgrade

All boats shown on our website

Now open to the Public for Dining by reservation only. 465-3983

Breakfast 8:am - 9:am, Dinner served at 5:pm
Daily menu listed on our website
 Boat docking available for Lake Residents

www.whisperwoodlodge.com

WINTERBERRYFARMSTAND.COM

Route 27, Belgrade
 207.649.3331

KIDS FARM CAMP

Offering two one week sessions - 8:30-4pm daily
 June 27th - July 1st & July 25th - 29th
 Ages 5-11 \$200.00

Belgrade's working family farm

FARMSTORE & CAFÉ
 Open 7 days a week, 9am - 6pm

Featuring all-organic products grown and produced here on the farm.

3 miles south of Belgrade Lakes Village on route 27.

LAKESIDE ORCHARDS AND FARM MARKET

Visit Us for All Your Local Foods!

Fresh Veggies • Bakery • Milk • Eggs • Beer • Wine & More

Open Monday-Friday 9-5 • Saturday 9-4
 318 Readfield Rd. (Rt. 17), Manchester
207 622 2479

Pete's Pig CATERING & BARBEQUE

Now Booking for 2016

- Corporate Functions
- Weddings & Rehearsals
- Special Events

Call (877) 860-1503
 (207) 495-4095

www.petespig.com

Maple Leaf Self Storage

Belgrade Me - 3.3 mi off Rte 27 on Route 135
495-2191

Various size units
 Owners live on site

Boat / Auto Storage
 By foot or unit

The Ice Cream Place

855 Village Road, Smithfield, ME
 Across from the Post Office
 362-5039 • Open 11am-9pm
smithfieldicecreamplace.com

Opening on June 9

Lobster Rolls
 Accessible by Boat from East Pond

Sub Rolls
 Pizza



-Business Directory-

ACCOMMODATIONS

See page 18

ART

Colby College Museum of Art, 5600 Mayflower Hill, Waterville, 859-4000, www.colby.edu/museum/

BANKING

Kennebec Savings Bank, 150 State Street, Augusta, 622-5801, www.kennebecsavings.com

Maine State Credit Union, 200 Capitol Street, Augusta, 623-1851, www.mainestatecu.org

Skowhegan Savings Bank, 450 Civic Center Drive, Route 27, Augusta, 1-800-303-9511, 623-2300, www.skowsavings.com

BEVERAGES

Tree Spirits, 152 Fairfield St, Oakland, 861-2723, www.treespiritsofmaine.com

BICYCLES

Auclair Cycle & Ski, 64 Bangor St, Augusta, 623-4351, www.auclaircycle.com

BOAT COVERS

Waterville Upholstery & Canvas, 1042 Kennedy Memorial Dr, Oakland, 465-7847, www.watervilleupholstery.com

BOAT LIFTS

Hammond Lumber Company, Auburn, Bangor, Belgrade, Boothbay Harbor, Brunswick, Damariscotta, Fairfield, Farmington, Greenville, Pemaquid, Portland, Skowhegan, Wilton, 1 866-HAMMOND, www.hammondlumber.com

BOAT MOORINGS

Great Pond Marina. 25 Marina Drive, Route 27, Belgrade Lakes, 495-2213, www.greatpondmarina.com

BOAT RENTALS

Castle Island Camps, Long Pond, 441 Castle Island Road, Belgrade Lakes, 495-3312, www.castleislandcamps.com

Great Pond Marina, 25 Marina Drive, Route 27, Belgrade Lakes, 495-2213, www.greatpondmarina.com

Whisperwood Cottages, Salmon Lake/McGrath Pond, 103 Taylor Woods Road, Belgrade, 465-3983, www.whisperwoodlodge.com

BOAT SALES AND SERVICES

Clark Marine, 57 Puddledock Road, Manchester, 622-7011, mail@clarkmarine.biz, funonthewaterstartshere.com

Hamlin's Marine, 290 West River Road, Waterville, 872-5660, www.hamlinsmarine.com

Mid-Maine Marine and RV, 885 Kennedy Memorial Drive, Oakland, 465-2146, www.midmainemarine.com

BOAT STORAGE

Belgrade Boat Storage, 31 Pinkham's Cove Road, Belgrade, 495-3421, 314-3287, www.belgradeboatstorage.com

Belgrade Lakes Marine and Storage, Inc, 366 Augusta Road, Belgrade, 495-2378, www.belgradelakesmarine.com

Clark Marine, 57 Puddledock Road, Manchester, 622-7011; and Route 202, Monmouth, mail@clarkmarine.biz, funonthewaterstartshere.com

Great Pond Marina, 25 Marina Drive, Route 27, Belgrade Lakes, 495-2213, www.greatpondmarina.com

Hamlin's Marine, 290 West River Road, Waterville, 872-5660, www.hamlinsmarine.com

Maple Leaf Self Storage, 688 Manchester Road, Route 135, Belgrade, 495-2191, 441-5529

Mid-Maine Marine, 885 Kennedy Memorial Drive, Oakland, 465-2146, www.midmainemarine.com

BOOKS

Children's Book Cellar, 52 Main Street, Waterville, 872-4543, childrensbookcellar.com

BUILDERS

Craig's Carpentry/North Bay Estates, Route 8, North Belgrade, Craig Alexander, 649-3749

G&L Contracting, 116 Lakeshore Drive, Belgrade Lakes, 215-7951, 495-2325, 233-7408, gandlcontracting-maine.com

LakeHouse Design, Build, Renovations, 17 Birchwood Road, Augusta, 242-3663, www.lakehousedesignbuild.com

BUILDING MATERIALS

Hammond Lumber Company, Auburn, Bangor, Belgrade, Boothbay Harbor, Brunswick, Damariscotta, Fairfield, Farmington, Greenville, Pemaquid, Portland, Skowhegan, Wilton, 866-HAMMOND, www.hammond-lumber.com

COMPUTER CONSULTANTS

Macintosh Solutions, Michael Breault, 24 Welch Road, Wilton, 645-5083, cell 578-0226, mo.breault@michael-breault.net, www.michaelbreault.net

DINING

See Directory on page 15

DOCKS

-Brown's Dock Services at Great Pond Marina, 495-2600, 316-7514, www.browndockservices.com

G&L Contracting, 116 Lakeshore Drive, Belgrade Lakes, 495-2325, 215-7951, 233-7408, gandlcontracting-maine.com

Hammond Lumber Company, Auburn, Bangor, Belgrade, Boothbay Harbor, Brunswick, Damariscotta, Fairfield, Farmington, Greenville, Pemaquid, Portland,

Skowhegan, Wilton, 866-HAMMOND, www.hammondlumber.com

ELDER CARE

Maine-ly Elder Care, 28 Center Street, Oakland, 465-3249, www.maine-lyeldercare.com

ENGINEERING

Thayer Engineering, septic design, storm water mitigation, permitting, 17 Hasson Street, Farmingdale, 582-7762, www.thayereng.com

EXCAVATING

Belgrade Boat Storage, 31 Pinkham's Cove Road, Belgrade, 495-3421, 314-3287, belgradeboatrentals.com
David Stevens, P0 Box 146, Belgrade, 465-3815, cell 314-0314

EYE CARE

Eye Care of Maine, 325 E. Kennedy Memorial Drive, Waterville, 873-2731, 1-800-660-3403, www.Maine2020.com

FARMSTANDS

Lakeside Orchards, 318 Readfield Road, Route 17, Manchester, 622-2479

Winterberry Farm, 538 Augusta Road, Route 27, Belgrade, 495-2593, 649-3331, www.winterberryfarmstand.com

FINANCIAL PLANNING

Golden Pond Wealth Management, 129 Silver Street, Waterville, 873-2200, www.goldenpondwealth.com

FIREWOOD

J & M Logging, Inc. 853 Civic Center Drive, Augusta, 622-6353, www.jmlogginginc.com

FLOORING

HAMMOND LUMBER COMPANY, Auburn, Bangor, Belgrade, Boothbay, Brunswick, Damariscotta, Fairfield, Farmington, Greenville, Pemaquid, Portland, Skowhegan, Wilton, 866-HAMMOND, www.hammond-lumber.com

GENERATORS

Generators of Maine, 262 Augusta Road, Belgrade, 495-2285, www.generatorsofmaine.com

GOLF

Natanis Golf Course. 735 Webber Pond Road, Vassalboro, 622-3561, www.natanisgc.com

HEALTH CENTERS

Belgrade Regional Health Center, 4 Clement Way, Belgrade Lakes, 495-3323, www.healthreachchc.org, belgradechc.org



Inland Hospital, 200 Kennedy Memorial Drive, Waterville, 861-3000, 1-800-491-8600, www.inlandhospital.org
MaineGeneral Medical Center, Alfond Center for Health, 35 Medical Center Parkway, Augusta; Thayer Center for Health, 149 North Street, Waterville, 1-855-4463, www.mainegeneral.org

ICE CREAM
Smithfield Ice Cream Place, 855 Village Road, smithfieldicecreamplace.com, 368-5039

JEWELRY
Larsen's Jewelers, 57 Main Street, Waterville, 872-6301, 1-800-697-1874, www.larsensjewelers.com
L.Tardif Jeweler, 62 Main Street, Waterville, 872-7542, 1-800-834-3638, ltardifjewelers.com

KITCHENS
Hammond Lumber Company, Auburn, Bangor, Belgrade, Boothbay, Brunswick, Damariscotta, Fairfield, Farmington, Greenville, Pemaquid, Portland, Skowhegan, Wilton, 866-HAMMOND, www.hammondlumber.com

LAKE ASSOCIATIONS
Belgrade Lakes Association (BLA), Long Pond and Great Pond, PO Box 551, 137 Main Street, Belgrade Lakes, 512-5150, belgradelakesassociation.org

LANDSCAPING
G&L Contracting, Belgrade Lakes, 215-7951, 495-2325, 233-7408, gandlcontractingmaine.com
Lynch Landscaping, Skowhegan, 474-2420, lynchlandscaping.com

MOVIE THEATERS
Railroad Square Cinema, call for titles and times, 17 Railroad Square, Waterville, 873-6526, www.railroadsquarecinema.com

MUSEUMS
Colby College Museum of Art, 5600 Mayflower Hill, Waterville, 859-5600, www.colby.edu/museum/

MUSIC/CONCERTS
Snow Pond Center For The Arts and New England Music Camp, 8 Goldenrod Lane, Sidney, 844-476-6976, www.snowpond.org

ORCHARDS
Lakeside Orchards and Farm Market, 318 Readfield Road, Route 17, Manchester, 622-2479

PHYSICAL THERAPY
Dockside Physical Therapy, 47 Main Street, Belgrade Lakes, 495-3195, 512-2544, Fax 512-2545

PIANO ENJOYMENT
Diane Gorman, 906 Manchester Road, Belgrade, 495-3222

PLUMBING
Paul Hanna's Plumbing, Belgrade, 495-3805

REAL ESTATE DEVELOPMENTS
North Bay Estates, Belgrade, 649-3749, crgsnbe@yahoo.com

REAL ESTATE
Coldwell Banker Rizzo Mattson, 219 Capitol Street, Augusta, 622-9000, www.rizzomattson.com
Day's Real Estate, 262 Augusta Road, Route 27, Belgrade Lakes, 495-3111, 1-888-495-3111, www.daysrealestate.com
Lakepoint Real Estate, 221 Main Street, Belgrade Lakes, 495-3700, www.belgradelakepoint.com
Sprague & Curtis Real Estate, 75 Western Avenue, Augusta, 623-1123, www.spragueandcurtis.com

LODGING RESERVATIONS
See page 14

RESTAURANTS
See Dining Directory on page 15

RETIREMENT COMMUNITIES
Granite Hill Estates, 60 Balsam Drive, Hallowell, 626-7786, 1-888-321-1119, www.granitehillestates.com

SCHOOLS
St. Michael School, grades pre-K 3-year-old through 8th, 56 Sewell Street, Augusta, 623-3491, www.sms-maine.org
-Snow Pond Arts Academy, 8 Goldenrod Lane, Sidney, 844-476-6976, www.snowpond.org

SECURITY SYSTEMS
Cayer Security Services, Inc, 208 College Avenue, Waterville, 453-9177, www.cayersecurity.com

SELF STORAGE
Maple Leaf Self Storage, 688 Manchester Road., Route 135, Belgrade, 495-2191

SURVEYING
Acme Land Surveying, 108 Fairbanks Road, Suite 5, Farmington, 778-4081, www.acmelandsurveying.com

WINDOWS
Hammond Lumber Company. Auburn, Bangor, Belgrade, Boothbay, Brunswick, Damariscotta, Fairfield, Farmington, Greenville, Pemaquid, Portland, Skowhegan, Wilton, 1-866-HAMMOND, www.hammondlumber.com

ASSOCIATIONS/GROUPS

THE BELGRADES...

- **East Pond Association**, Smithfield/Oakland, www.eastpond.org
- **North Pond Association**, Smithfield/Rome/Mercer, www.northpond.net
- **McGrath Pond/Salmon Lake Association (MP/SL)**, Belgrade/Oakland, RR 2, Box 2800, Belgrade, 04917, 465-3983, www.mcgrathpond-salmonlake.org
- **Belgrade Lakes Association (BLA) for Great Pond and Long Pond**, Belgrade/Rome/Mount Vernon, PO Box 551, 137 Main Street, Belgrade Lakes, 04918, 512-5150, www.belgradelakesassociation.org
- **Friends of Messalonskee**, Oakland/Belgrade/Sidney, PO Box 532, Oakland, 04963, 465-4622, www.friendsofmessalonskee.com
- **Belgrade Regional Conservation Alliance and BRCA Conservation Corps**, PO Box 250, 137 Main Street, Belgrade Lakes, 04918, 495-6039, www.belgradelakes.org
- **Belgrade Lakes Region Business Group (BLRBG)**, PO Box 596, Belgrade Lakes, 04918, 495-3700, www.belgradelakesmaine.com
- **Maine Lakes Resource Center/Docks to Doorways**, PO Box 431, 137 Main Street, Belgrade Lakes, 04918, 495-3617, 620-6029, www.minelakesresourcecenter.org

BEYOND...

- **Friends of the Cobbossee Watershed**, PO Box 5003, Augusta, 04332-5003, 621-4100, www.watershed-friends.com
- **Franklin County Soil & Water Conservation District**, 107 Park Street, Farmington 04938, 778-4279, www.franklincswcd.org
- **Kennebec County Soil & Water Conservation District**, 21 Enterprise Drive, Augusta 04330, 622-7847, ext. 3, www.kcswcd.org
- **Somerset County Soil & Water Conservation District**, 12 High Street, Skowhegan 04976, 474-8324, www.somersetswcd.org
- **Kennebec Land Trust (KLT)**, PO Box 261, 331 Main Street, Winthrop, 04364, 377-2848, www.tkltr.org
- **Kennebec Messalonskee Trails**, PO Box 2388, Waterville, 04903, 873-6443, www.kmtrails.org
- **Kennebec River Rail Trail**, PO Box 2195, Augusta, 04338, 623-8162, www.krrt.org
- **30 Mile River Watershed Association (30 MRWA)**, Kimball Pond in Vienna to the Androscoggin River, PO Box 132, Mt Vernon, 04352, 685-4956, www.30mileriver.org
- **Maine Lakes Society**, formerly Congress of Lake Associations, PO Box 447, 137 Main Street, Belgrade Lakes, 04918, 1-855-463-2652
- **Central Maine chapter of the New England Mountain Bike Association (CeMeNEMBA)**, 441-6227, www.cemenemba.org



— Expressions —

Picasso To Highlight Colby Summer Exhibits



A large selection of prints from the recently-acquired deluxe set of 100 etchings by Pablo Picasso will be on view at the Colby College Museum of Art, Mayflower Hill, Waterville, from June 2 through August 21. Selected from the "Vollard Suite," the prints are etched in the neo-classical style that Picasso adapted from his studies of classical sculpture and which traces his artistic development during a critical period in his career. Colby's "Vollard Suite" is believed to be one of only eight signed deluxe sets and the only one held by a collegiate museum. For more information call 859-5600.



L.C. Bates Museum Exhibit Explores Maine's Fields



Colby Student Curators Nora Hill and Francesca Soriano selecting works for the exhibition.

"Open Spaces: Reimagining Pastoral Maine," the Summer Art Exhibition at L.C. Bates Museum on Route 201 in Hinckley represents a collaboration between the museum staff and two Colby College students, Francesca Soriano and Nora Hill, under the supervision of Professor Veronique Plesch. The exhibit aims to

explore the natural beauty of Maine's fields and the flora and fauna that fill them by combining scientific and artistic methods. Works in a variety of mediums from contemporary Maine artists are featured. Throughout the summer there will be various workshops with the artists. For more information call 238-4250.



This Week's LakeSmart Tip Dripline Infiltration Trenches



Before.



After

Collect and infiltrate runoff from rooftops, driveways, and other areas. Dig a trench 18 inches wide and 8 inches deep. Fill with crushed stone. A geo-textile liner can extend the life of the trench.

For a free installation contact: Nathan Durant, Youth Conservation Corps Director
Maine Lakes Resource Center 207-495-3617
brcacc@mainelakes.org

Sprague & Curtis
Real Estate

spragueandcurtis.com

6 2 3 . 1 1 2 3

75 Western Ave. • Augusta, ME



BELGRADE— Beautiful Ranch style home w/1 floor convenience. Wonderful condition, open Kitchen/LR/DR. MBR w/private BA & cozy gas stove in the LR. Private back yard, attach garage. Quiet dead-end street. Clay oven in the backyard for making pizza or bread! Note: See deed for Restrictions.
MLS 1259825 \$179,000



LIBERTY-LITTLE LAKE ST. GEORGE — Year round waterfront living. Spacious 3-4 BR, 2.5 BA home, 2 acres w/100' of owned water frontage. Eat in kitchen, formal DR & LR. Lg FR w/pellet stove. Deck off kitchen & family room adds great entertaining space. Fantastic view of the water. Quiet cove. Little Lake St. George connects to Lake St. George.
MLS 1262968 \$274,900



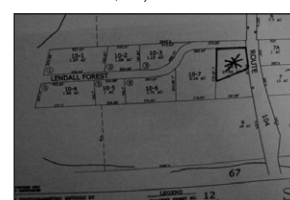
SIDNEY-WARD POND LAND — Rare Waterfront offering. A gorgeous parcel of land with over 450' of waterfront & 15+ acres. Beautiful frontage w/a very gentle incline into the water. Pretty Easterly pond views. Existing camp road on most of the property. Slightly rolling terrain, mostly wooded. Perfect for a single home or a small development. Surveyed.
MLS 1257763 \$249,900



MANCHESTER-COBBOSSEE LAKE — Lakefront living! Enjoy all 4 seasons. Offering LR w/brick fireplace, DR, updated kitchen, 3+ BDR's, 2 car garage w/loft, boat slip. Fish, swim, boat or just relax on your own dock. Westerly facing views w/spectacular sunsets. Rd by road association. 5 mi from Augusta.
MLS 1263394 \$890,000



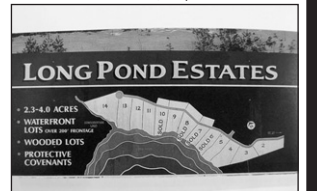
MONMOUTH-COBBOSSEE LAKE — Here is a seasonal cottage right on the shore. Featuring 2BR plus a Loft area. Front deck overlooking the lake. In need of updating & TLC but much potential—make memories here. Great for swimming, boating, or just relaxing on this premiere Central Maine Lake!
MLS 1224464 \$110,000



SIDNEY-LAND — Lovely Sidney Building lot on the corner of Lendall & West River Road. In an area of nice homes. Driveway to be off Lendall Forest.
MLS 1139411 \$29,900



WAYNE-POCASSET LAKE — Privacy, tranquility, shared 40+/- acre conservation/common area w/footpaths, quiet cove setting. 3,400+/- SF 3-4BR, 4A, Contemporary. Lots of glass. 22' vaulted LR w/fr to ceiling stone fireplace, master suite, lake level FR w/bar/entertain area, rec RM or 4th BR, much more.
MLS 1254287 \$649,000



ROME-LONG POND — 2 Spectacular Waterfront lots. All surveyed & soils tested and waiting for your new home. Long Pond is in the popular Belgrade Lakes chain. 1-95 is 25 minutes away & 40 minutes to Sugarloaf Ski Resort. Award winning Belgrade Lakes Golf Club and Kennebec Highlands are close by.
MLS 1248741 \$99,900, MLS 1248745 \$189,000



MONMOUTH-COBBOSSEE — Fabulous waterfront property- beautiful home AND cottage included! Immaculate condition, 3-4BR, 3BA, in-law apt, pretty kitchen w/DR, nice landscaping/yard, HUGE heated garage, cottage w/1BR, sandy beach, outdoor fireplace. MUCH MORE, MUST SEE!
MLS 1127463 \$429,900



Business

Central Maine Growth Council Makes Workforce Development a Priority

When asking hundreds of local business owners “What keeps you up at night?” the majority of people replied with the same statement: “I’m having a hard time to find good employees.” Central Maine Growth Council (CMGC) quickly convened its board, and colleagues at Colby College, Kennebec Valley Community College, Thomas College, Maine Department of Labor, Waterville Public Library Business and Career Center and other local economic development agencies to discuss ways to address the workforce development issue in the central Maine area.

In addition to these organizations, Central Maine Growth Council has solidified a great partnership with Mid-Maine Technical Center (MMTC) located adjacent to Waterville Senior High School. MMTC offers the area’s high school students twenty-five career and technical courses that have been approved for high school graduation credit. Each technical program at MMTC has achieved National Program Certification or is using State Licensing Standards that provides its students the opportunity to earn forty-two Industry Recognized Certifications. Participating high schools include: Lawrence, Messalonskee, Waterville, and Winslow High Schools. Students from area private schools and home-schooled students who live in a sending school district may also enroll at the Technical Center on a space available basis. CMGC has successfully introduced over 30 MMTC students over this school year to local businesses such as:

Wrabacon, Fabian Oil and Houle’s Plumbing, Heating & Air Conditioning that are looking to grow their future workforce.

“The connection between our students and businesses is fantastic!” states Tanya Verzoni, development coordinator for CMGC. “The students at MMTC that have demonstrated strong soft skills, technical skills and good grades in all of their classes get an opportunity to interview with a local business owner or manager for a pre-apprenticeship spot within a company. The successful student is then selected and once or twice a week during their class time, they go to ‘work’ at the local business learning what it takes to work within a specific trade. The pre-apprenticeship program gives the students the ability to try out a career and possibly get hired by the company for a summer job or a full-time job after graduation.

It’s a win, win!” Beth Carlton, student services coordinator/school counselor at Mid-Maine Technical Center notes. “The relationship between Mid-Maine Technical Center and the Central Maine Growth Council has provided the foundation to create internships for over 30 of our highest skilled students. These internships have proven to be an incredible opportunity for students to advance their skills and establish connections in industry while still in high school.” Feedback from local businesses has been just as positive. “The pre-apprenticeship students that worked with us were a joy to engage with. They were attentive, profes-

sional, and passionate about woodworking and took pride in the work they performed. The most priceless part of the pre-apprenticeship experience for me was the day of the 1st Annual Regional Career Fair that one of our pre-apprenticeship students attended. He kept bringing his classmates over to our table explaining with pride and enthusiasm the products he’d been working on at the shop and the quality of the products we made. In that setting, he was the best company advocate that a company could hope for! Seeing his genuine excitement of the Duratherm pre-apprenticeship experience he had confirmed for us that we had made a connection with this student and that the pre-apprenticeship pilot program we embarked on this year is something we hope to continue with in the future.” offers President of Duratherm Window Corporation, Timothy Downing.

In addition to the pre-apprenticeship program, CMGC has partnered with the four local high schools on a recent career fair that exposed 425 students to 36 local businesses such as: Durathem Window, Zimba Company, and Northeast Laboratory Services that are hiring or will be hiring in the near future. Garvan Donegan, economic development specialist says, “We must prepare our students with deep learning skills as to keep our local students from leaving mid-Maine after they graduate high school. We want to encourage them to attend one of our superb local colleges and/or establish a robust career in our region.”



SNOW POND
CENTER FOR THE ARTS
2016 SUMMER MUSIC SERIES



SNOW POND SYMPHONY

June 26, 3:00 pm
With Guest Soloist
Jo-Ann Sternberg, Clarinet
Bowl in the Pines
TICKETED EVENT



The Ballroom Thieves with The Maine Youth Rock Orchestra

July 12 - 5:00 pm BBQ Picnic - 6:00 pm Concert
Bowl In The Pines - TICKETED EVENT





37th Annual NEMC POPS

July 16, 7:30 pm
Messalonskee Performing Arts Center, Oakland, ME
TICKETED EVENT

July 30, 7:30 pm
Guest soloist
Bill McHenry, Saxophone
Bowl In The Pines
TICKETED EVENT



JAZZ
UNDER THE STARS
FEATURING
THE AL COREY BAND

DECEMBER '63
THE FRANKIE VALLI & THE FOUR SEASONS TRIBUTE CONCERT
August 25, 7:30 pm
Bowl In The Pines
TICKETED EVENT
*Sponsor Appreciation Night


LITTLE WOMEN
August 4 & 5, 7:30 pm, Alumni Hall
Presented by NEMC Musical Theater
TICKETED EVENT
LITTLE WOMEN is presented through special arrangement with Music Theatre International (MTI). All authorized performance materials are also supplied by MTI. www.MTIshows.com

FREE
Faculty & Student Recitals
Wednesdays & Fridays at 7:30
FREE Concerts
Every Saturday and Sunday at 3:00
Bowl in the Pines

Tickets and information
available at www.snowpond.org
8 Goldenrod Lane, Sidney, Maine 04330 844-476-6976
*Presented through special arrangement with Music Theatre International (MTI)




NEMC
EST. 1937



GOLDEN POND
WEALTH MANAGEMENT

“The Golden Age is before us, not behind us”
...William Shakespeare

Whether you are 55 or 85 our mission is the same...
grow and protect your family’s treasure for your
‘Golden Age’



129 Silver St, Waterville, ME
Phone: (207) 873-2200
www.goldenpondwealth.com

Securities offered through LPL Financial, Member FINRA/SIPC



Your own little island of

FUN

**LARGEST
SHOREMASTER
DISTRIBUTOR
in the
COUNTRY**

Improve your lake shore living experience with a **SHOREMASTER SWIM RAFT**. Kids and adults alike will enjoy years of fun and treasured memories.

We Cover The Waterfront.

SHOREMASTER

SWIM RAFTS

| | |
|--|----------------|
| 90" x 114" Poly Swim Raft – Poly Deck - Yellow or Gray | \$1,129 |
| 8'x8' Aluminum Swim Raft Cedar Deck | \$1,589 |
| 8'x8' Aluminum Swim Raft Aluminum Deck | \$2,029 |
| 8'x8' Aluminum Swim Raft White Aluminum | \$2,099 |
| Rip Raft – Tan or Orange | \$849 |

Ladder sold separately

| | |
|-----------------------------------|-------|
| 3 step pivot ladder | \$269 |
| 4 step pivot ladder | \$329 |
| 5 step pivot ladder | \$369 |
| Nylon Rope Ladder (Rip Raft only) | \$57 |
| 2 step Rip Raft Ladder | \$215 |

Toll-free 1-866-HAMMOND

Hammond Lumber Company

Visit us online at www.hammond-shoremaster.com for a 82-page Product Planning Guide & Price List.

AUBURN • BANGOR • BELGRADE • BOOTHBAY HARBOR • BRUNSWICK • DAMARISCOTTA
FAIRFIELD • FARMINGTON • GREENVILLE • PEMAQUID • PORTLAND • SKOWHEGAN • WILTON

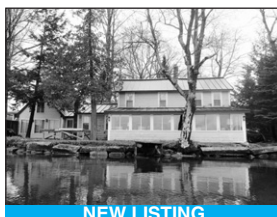
Lakepoint

REAL ESTATE

207.495.3700

221 Main St.,
Belgrade Lakes, ME 04918

www.belgradelakepoint.com



NEW LISTING

GREAT POND, ROME: 221' lakefront. Cottage just feet away from sandy lakefront. Attached guest quarters. Boat House. Amazing Space #1241846 **\$595,000**



NEW PRICE

LONG POND, ROME: 4BR/3.5BA, 100' +/- lakefront, huge deck overlooking lake, pvt setting, dock and swim float, great rental history! #1259116 **\$564,900**



LONG POND ACCESS, ROME: Spacious year round home on 1.8 acres with access to 300' sandy beach on Long Pond. Private setting. #1253653 **\$209,000**



NEW LISTING

LONG POND, ROME: 150' Lakefront 2BR, 1 BA, screened porch, new drilled well, deep waterfront, deck, mooring and Shoremaster dock. #1263688 **\$298,500**



GREAT POND, BELGRADE: 4BR/3BA year-round, landscaped, level w/130' +/- waterfront. Screened porch, deck, family room, 2 car garage. #1248495 **\$379,200**



FLYING POND, MT VERNON: 3BR Cottage, 150' waterfront, open concept kitchen/living, woodstove, screened porch, deck at water's edge. #1223724 **\$339,000**



NEW PRICE

SALMON LAKE, BELGRADE: 2 BR plus bonus room, 52' lakefront, well maintained perfect Maine Camp Get-away. Just steps to water. #1258125 **\$184,900**



NEW PRICE

LONG POND, BELGRADE: 3BR + loft, 2BA. Lots of space. Year round, 50' +/- on Long Pond. Each level has full kitchens. Dock included. #1258328 **\$265,000**



BELGRADE STREAM, BELGRADE: 425' stream frontage. 5.4 acres. 3BR, 2.5BA. Custom built exceptional home with many amenities. #1251229 **\$798,000**

GRANITE HILL ESTATES

MARTHA BALLARD
ASSISTED LIVING

Part of:
MaineGeneral Health



Retire your way. Today!
In a community that cares.

Now's the time to join the family at **Granite Hill Estates**, central Maine's premiere continuing care retirement community and part of **MaineGeneral Health**. Call 207-626-7786 or toll free 1-888-321-1119 today to schedule a tour. Offering an impressive menu of amenities:

- Spacious cottage homes and apartments
- Elegant full-service dining plan
- Maintenance and housekeeping services
- Scheduled courtesy transportation
- Social, cultural and educational programs
- Indoor pool complete with hot tub
- Cozy reading room, library and bank
- Attractive game, billiard, and meeting rooms
- Fitness center with an on-site fitness coordinator
- Convenient hair salon, massage spa and meditation room
- Wooded walking trails throughout our 135 acre campus

**Awarded
Highest Honors
for
Resident
Satisfaction**

Holleran National
Senior Living Survey



email: info@granitehillestates.com

60 Balsam Drive, Hallowell, ME 04347

207-626-7786

1-888-321-1119

granitehillestates.com

Watercraft Safety Class **FREE**

Date: Saturday, June 25th, 2016

Time: 9am-3pm

Place: Fairview Grange #342, 826 Village Road, Smithfield

Lunch Provided

Seating is limited to the **first 50** pre-registrants, to reserve your spot and FMI email: Jodie@NorthPond.net or call 362-1009

Participation in this boating education course will teach how to properly operate and maintain a boat/watercraft including:

- ∞ Proper Operation & Safety > Boating Handling-Equipment-Trailing
- ∞ Laws
- ∞ Emergencies & Survival
- ∞ Self Help First Aid
- ∞ Environment/Ethics
- ∞ Passage of a final exam is required to receive your certification.

*This class serves as the class for certification for 16-18 y/o to operate Personal Watercraft AKA Jet skis.



Brought to you by the **North Pond Association** in collaboration with the Maine Department of Inland Fisheries and Wildlife Safety Division. Gerry Craig, Regional Safety Coordinator of Kennebec County can be reached at 207-643-2203 FMI