

1939

Brochures from the Belvedere Inn / Belvedere Resort in Maranacook, Maine

Belevedere Inn

Follow this and additional works at: http://digitalmaine.com/winthrop_books

Recommended Citation

Belevedere Inn, "Brochures from the Belvedere Inn / Belvedere Resort in Maranacook, Maine" (1939). *Winthrop Books*. 2.
http://digitalmaine.com/winthrop_books/2

This Text is brought to you for free and open access by the Winthrop, Maine at Maine State Documents. It has been accepted for inclusion in Winthrop Books by an authorized administrator of Maine State Documents. For more information, please contact statedocs@maine.gov.



Belvedere Inn on Lake Maranacook · Maranacook, Maine

THE ADDITION to the dining room at BELVEDERE is one of the many improvements made for your enjoyment. The service that you receive here is courteous, pleasing and efficient. It is needless to say that our table offers you wide and tempting variety of delicious, well prepared food.

FOR REFERENCE regarding BELVEDERE won't you please read the letter from our Governor to a family, who for the past ten consecutive years have been coming to this resort. We feel sure that a satisfied guest over this period of years is indeed a very good recommendation.



THE INTERIOR OF A
PRIVATE COTTAGE
WITH PRIVATE BATH.



THE MODERN KITCHEN,
WHERE YOUR FOOD IS PRE-
PARED, DESERVES TO BE
SHOWN IN OUR BOOKLET.



LEWIS O. BARROWS

GOVERNOR



STATE OF MAINE

Executive Department

AUGUSTA

July 25, 1939

Mr. and Mrs. Albert Beach
Belvedere Inn
Maranacook, Maine

Dear Mr. and Mrs. Beach:

It has come to my attention that your family is spending its tenth consecutive year at Belvedere Inn and that special observances are marking the occasion.

Next to our own children, Maine has a special place in her heart for adopted sons and daughters who come here during the summer months for rest and recreation.

This being so, it is only fitting that I send my congratulations and best wishes to you. I hope that you will continue to come to Maine for many more years and that you will find the State and its people as pleasant in the future as you have in the past.

Very truly yours,

LEWIS O. BARROWS
Governor

LOB:R

Belvedere Resort

Is located on the western shore of Lake Maranacook about 3 miles from Winthrop, Maine, and 12 miles from Augusta, the State Capital.

We offer you the best facilities for an enjoyable stay in Maine.



One of our features is a series of woods trails, and an area is being prepared to provide for house and camp trailers.

The regular season runs from June 1 to Sept. 15, with pre- and post-season reservations at reduced rates. Please do not ask for reservations of less than a full week. For additional information or for reservations, write or call.

BELVEDERE RESORT, Winthrop, Maine 04364
Telephone 207 — 377-9731
Larry and Dottie Birkbeck, Hosts-Owners

BELVEDERE RESORT

**MOST ENJOYABLE SPOT
IN VACATIONLAND**



**Fishing
Boating
Swimming
Vacation Fun**

**ON LAKE MARANACOOK
WINTHROP, MAINE**

**In the Center of Maine's
Famous Lake Region**

Belvedere Resort

WELCOMES YOU to Maine and BEAUTIFUL LAKE MARANACOOK

We offer comfortable and attractive modern HOUSEKEEPING UNITS equipped to sleep from 2 to 7 persons. We have rollaways to take care of additional persons.

ALL COTTAGES are equipped with gas stoves, electric refrigerators, and sinks with hot and cold water. Dishes and Linen are furnished. All have COMPLETE BATHS — some with tubs — some showers. Cottages are HEATED on brisk days and cold nights.

Swimming in lake or pool, boating, fishing, tennis, ping pong, horseshoes, shuffleboard, pool, and badminton are offered.

Although famous for small-mouth bass, Lake Maranacook has been stocked with salmon and many large ones are being taken. Maranacook is seven miles in length, offering, besides fishing, excellent boating, swimming, water skiing, and skin diving in its crystal clear waters.

Our aquamarine swimming pool with diving board is kept filled with pure filtered water. Luxurious chaise lounges and pads surround the pool on its spacious apron for the utmost in relaxation and comfort.

Nearby is bowling, riding, and the Augusta Country Club for golfers. Many excellent eating places are accessible. Loafing in the sun or the shade of the beautiful rock maples and pines of our huge terrace is a popular pastime.





Call of Maine

"Have you stood on the shores of some wooded lake or stream at dawn and watched the day unfolding? Have you watched the rising mists roll along, clearing for a moment to let the sun sparkle on the surface of some stretch of quiet water, then close down as swiftly to be finally dispelled as the sun rises higher in ever thinning wisps?"

"Have you sat on some moss-grown log in the seeming silent forest and listened to the hum of insect life, where the breaking of a twig, the rustle of the foliage, shows the scampering squirrel or the dainty partridge out for its morning feeding, and have you heard the twittering of hidden warblers as they hop from limb to limb in search of food?"

"Have you been at night in some clearing under the sky, powdered with stars, and watched the moon rise, changing from red to mellow gold reflected in the waters at your feet? Have you looked up into the dazzling sheen of the Milky Way through openings between the spruce limbs and watched the stars stand out like beacon lights?"

"Have you heard one after another as the darkness thickens, the people of the night answering the summons of the stars, across the glistening waters the harsh love cry of the loon, in the river the night-feeding trout splash? Have you known that hush of night so profound that you hear the pulsating of the blood and feel that there is not silence nor yet sound, but a rhythmical, slow respiration as though the world breathed and you heard it, and hearing it felt that nature was mortal and that God was very near?"



Lazy Days



Comfortable bungalows with modern conveniences



Sport and Recreation for All at Belvedere

BELVEDERE INN has a commanding view of picturesque Lake Maranacook and its wooded hills for miles around, a scene not surpassed for beauty anywhere in New England. It is a picture that once seen will never be forgotten.

No place is more ideally situated for vacation joys than BELVEDERE INN. There are no dull moments here. You will find something to do from morn till night. Among the sports to be enjoyed at this Inn are tennis, boating, bathing, canoeing, diving boards, fishing, lawn golf, motoring, quoits, baseball and golf on practice fields. Only fifteen minutes' drive from the Country Club and an eighteen hole golf course. Dancing, movies, bowling and billiards make the evening enjoyable.

Comfortable Cabins and Cottages

Our individual log-cabins, accommodating two persons, offer you complete privacy. These cabins are a hundred feet from the main house, each having a ten foot porch facing the lake; they are comfortably furnished, well screened, lighted by electricity and have lavatories with running water. Frequently three young people want to occupy a cabin together in which case we can put in an extra bed. We also have large log-cabins that will accommodate parties of four or more persons. These cabins are well screened, have a large porch on the lake front, lighted by electricity, and have lavatories with running water. All of our cabins are immaculately kept by cabin girls; each party has its own cabin which insures the freedom and privacy of home.



A comfortable corner in the lobby

Our bungalows consist of two large sleeping rooms and a twenty-four foot porch; these rooms are cool and airy with cross ventilation, comfortably and daintily furnished. They are lighted by electricity and have a separate wash room with lavatory. These rooms have separate entrances and can be let to a party of two or four persons; they are seventy-five feet from the main building and dining room, and have hotel service. Rooms in the main building are all outside double rooms; they are well furnished with twin beds, and have adjoining baths.



BUSINESS men or women find the BELVEDERE INN ideally located and equipped to meet the sudden demand for their time and attention to business. There are telephone and telegraph connections both day and night; while transportation facilities, by frequent train and bus service, place them in constant communication with their business. The Inn has ample garage facilities and is within three miles of two fully equipped service stations.

Rates on application. Parties engaging rooms, bungalows, or log-cabins will kindly state when they will arrive; also how long they will occupy the same. Rooms will be at the disposal of guests, from date of engagement.

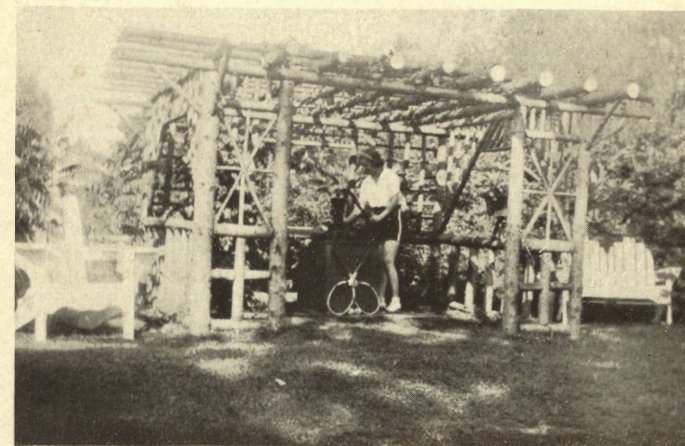
In the foregoing pages we have told you about BELVEDERE INN and what you may expect to find here. The congenial and delightful company with the spirit of good fellowship that always prevails, makes new guests feel immediately at home. We hope it will be our pleasure to have you as our guest this summer. But, whether our guest or not, we wish you a happy vacation in Maine.

Gentile clientele. For rates and reservations write

ALBERT L. NELSON, *Proprietor*

BELVEDERE INN

MARANACOOK, MAINE



Clear, sparkling water of unusual purity

Belvedere Inn

MARANACOOK, MAINE

A Vacation Inn for the Family



*On Lake Maranacook
In the Center of
Maine's Famous
Lake Region*



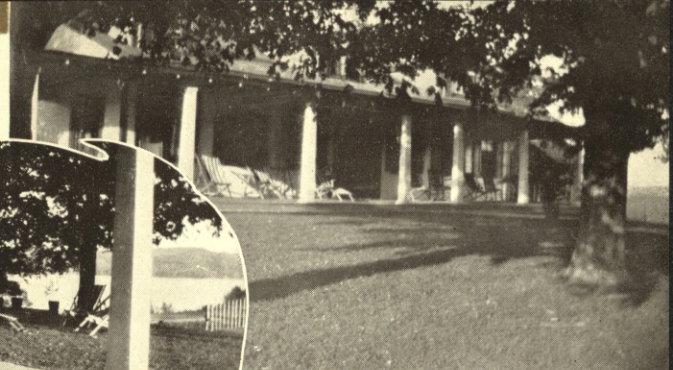
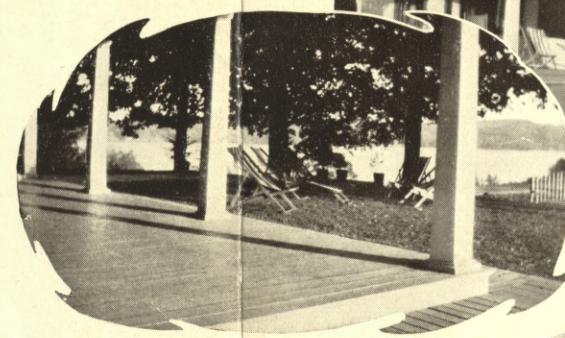
Individual Log Cabins with conveniences



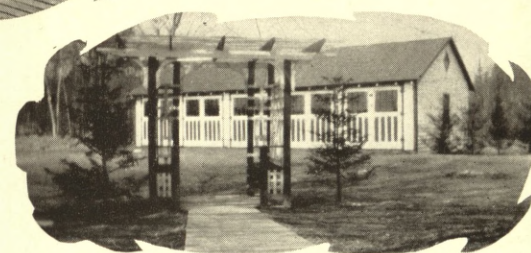
The cheerful Dining Room at Belvedere where service and cuisine are unexcelled



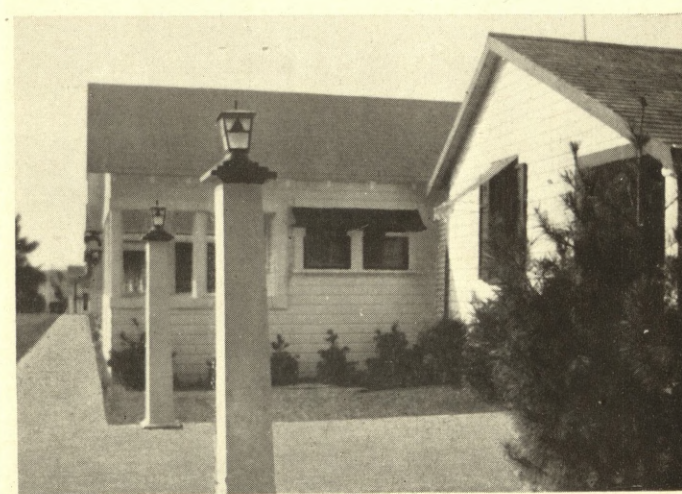
Spacious porches at Belvedere facing lake are a favorite meeting spot



Individual Garages



Below — Rooms that are well appointed for your comfort and convenience



Private cottages with screened in porch, hot and cold running water, and private bath. Just one of the many accommodations available at a most moderate rate. Every detail has been carefully gone over to insure you the comforts of your own home.

Belvedere Inn on this Beautiful Lake is Calling You

THIS DELIGHTFUL summer retreat is situated by the shore of Lake Maranacook, seven miles long in the central part of Maine's famous lake region. Here are Wayne, Cobbosseecontee, Annabessacook, Androscoggin, Torsey and Echo lakes, all within a short drive from the Inn. The doors that open to welcome you admit you to an Inn that has all the creature comforts and conveniences that make vacations in Maine so abundant and joyful.

The Inn is located twelve miles from the Capital City, Augusta, fifty-five miles from Portland and only three miles from the thriving little town of Winthrop where there are both Catholic and Protestant churches. Splendid motor roads lead from Columbus Circle in New York to Boston by way of Fordham, New Haven, New London, Stonington and Providence, a distance of 235 miles. From Boston to Maranacook, Maine, by the way of Newburyport, Portsmouth, Biddeford, Portland, Lewiston and Winthrop, is 165 miles. Those travelling by rail will find it convenient to use the Bar Harbor Express direct from Grand Central Station, New York, to Winthrop, leaving New York in the evening, and

arriving at Winthrop early the next morning. Trains leaving North Station at Boston arrive at Maranacook Station in the morning and afternoon. Maranacook Station is a ten minute walk from the Inn and we meet guests at the trains with automobile.

This Inn with its 125 feet of Colonial porch, surrounded by majestic maple shade trees and spacious lawns, invites cool breezes and shady comfort on warm afternoons or sultry evenings. Many happy vacation hours may be spent at the Inn where you will enjoy the genial atmosphere and the social life of this lake-side retreat from the moment you arrive until you say a reluctant "good bye."

The dining room is an intriguing feature of our Inn, tastefully and attractively decorated. Opening off the dining room is a spacious lounge and music room with comfortable chairs and reading tables where many pleasant hours can be spent with music, bridge and social life. Our table has gained for us an enviable reputation among the guests who patronize the Inn year after year. Plenty of fresh vegetables and berries are supplied from our own gardens and fresh milk, eggs, native lamb and poultry from nearby farms. The water used for drinking and cooking, analyzed at the Maine State Laboratory of Hygiene, is of purest quality.



The fast Tennis Court and our velvet lawns, beautifully landscaped with gardens of fragrant flowers



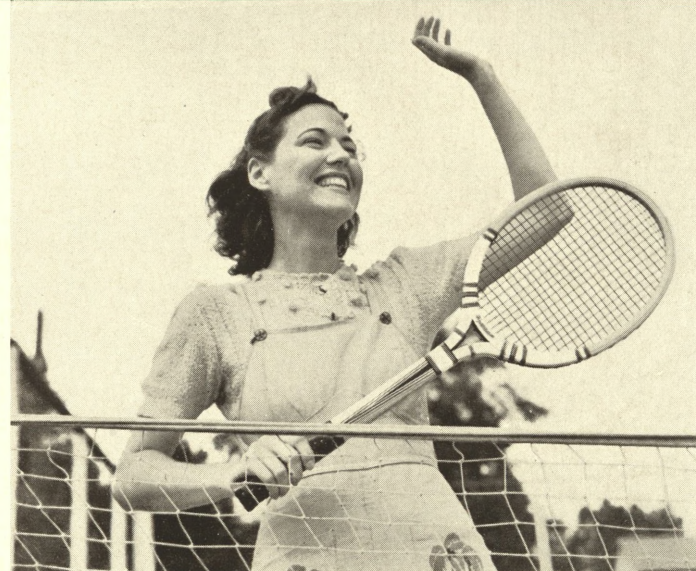


Belvedere Inn

This Inn with its 125 feet of Colonial porch, surrounded by majestic maple shade trees and spacious lawns, invites cool breezes and shady comfort on warm afternoons and evenings. Many happy vacation hours may be spent at the Inn where you will enjoy the genial atmosphere and the social life of this lakeside retreat from the moment you arrive until you say a reluctant "good bye."

The dining room at BELVEDERE is an intriguing feature of our Inn. The service that you receive here is courteous, pleasing and efficient. Our table has gained for us an enviable reputation among the guests who patronize the Inn year after year, and it is needless to say that the menu offers a wide and tempting variety of delicious and well prepared food. All fresh vegetables and berries, in season, fresh milk, cream, eggs, native lamb and poultry are delivered daily, from local farms.

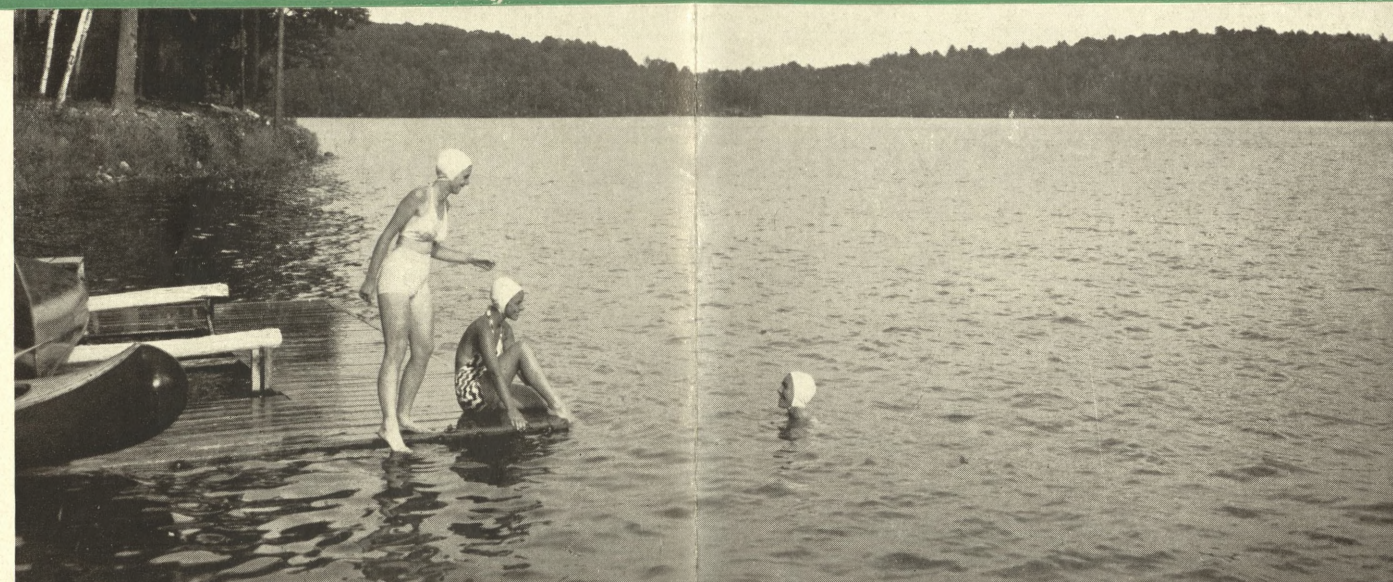
The water used for drinking and cooking, analyzed at the Maine State Laboratory of Hygiene, is of purest quality.



Sport and Recreation for All at Belvedere

BELVEDERE INN has a commanding view of picturesque Lake Maranacook and its wooded hills for miles around. If you are a fisherman, Lake Maranacook offers sport for the most discriminating angler, whether he uses fly or bait. Here you will find the big gamy bass, trout, perch and pickerel. This beautiful body of water, seven miles long, offers a variety of fish that must necessarily provide some perfect fishing during the sportsman's stay at BELVEDERE.

No place is more ideally situated for vacation joys than BELVEDERE INN. There are no dull moments here; you will find something to do from morn till night. Among the sports to be enjoyed at this Inn are splendid tennis courts, bathing, boating and canoeing, diving boards, excellent fishing, quoits, baseball and golf on practice fields, only a fifteen minute drive from



the Country Club and an eighteen hole golf course. Saddle horses are available. Dancing, movies, bowling make the evenings enjoyable.

Private Cottages and Cabins

Our individual log-cabins accommodate two persons and others accommodate four. These cabins are one-hundred feet from the main building and central dining room. Each one has a large porch facing the lake and are comfortably furnished. They are well screened, lighted by electricity and have lavatories with running water. Frequently, three young people want to occupy a cabin together, in which case we can put in an extra bed. Our large log-cabins consist of two double



rooms and accommodate four persons. All of the cabins are immaculately kept by cabin girls; each party has its own cabin which insures the freedom and privacy of home.

Our bungalows consist of two large sleeping rooms and a twenty-four foot porch; these rooms are cool and airy with cross ventilation, and are comfortably furnished. They are lighted by electricity, have running hot and cold water and flush toilet. These rooms have separate entrances and can be let to a party of two or four persons. In our main building we have double rooms with hot and cold running water and adjoining baths.

We have private cottages with private bath and every modern convenience. Many of these accommodate two persons in each one, and others accommodate four. All are facing the lake front and are located two-hundred feet from the main building and central dining room. Each and every one of our cabins, bungalows and cottages with private bath are cared for with complete hotel service. Every detail has been carefully gone over to insure you the comforts of your own home. The accommodations described in this booklet are available at a most moderate rate.



BUSINESS men or women find the BELVEDERE INN ideally located and equipped to meet the sudden demand for their time and attention to business. There are telephone and telegraph connections both day and night; while transportation facilities, by frequent train and bus service, place them in constant communication with their business. The Inn has ample garage facilities and is within three miles of two fully equipped service stations.

Rates on application. Parties engaging rooms, bungalows, or log-cabins will kindly state when they will arrive; also how long they will occupy the same. Rooms will be at the disposal of guests, from date of engagement.

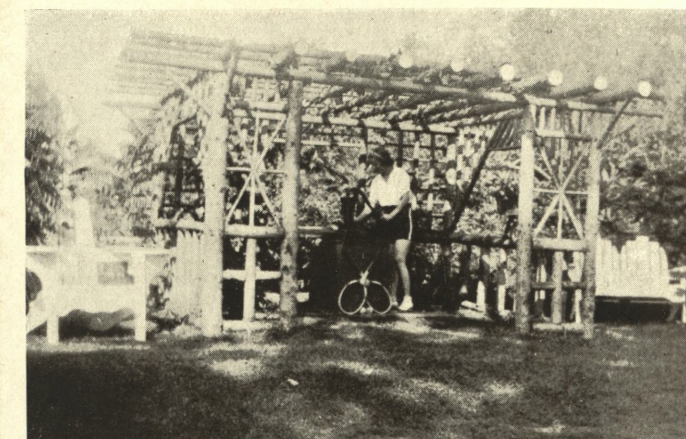
In the foregoing pages we have told you about BELVEDERE INN and what you may expect to find here. The congenial and delightful company with the spirit of good fellowship that always prevails, makes new guests feel immediately at home. We hope it will be our pleasure to have you as our guest this summer. But, whether our guest or not, we wish you a happy vacation in Maine.

Restricted clientele. For rates and reservations write

ALBERT L. NELSON, *Proprietor*

BELVEDERE INN

MARANACOOK, MAINE



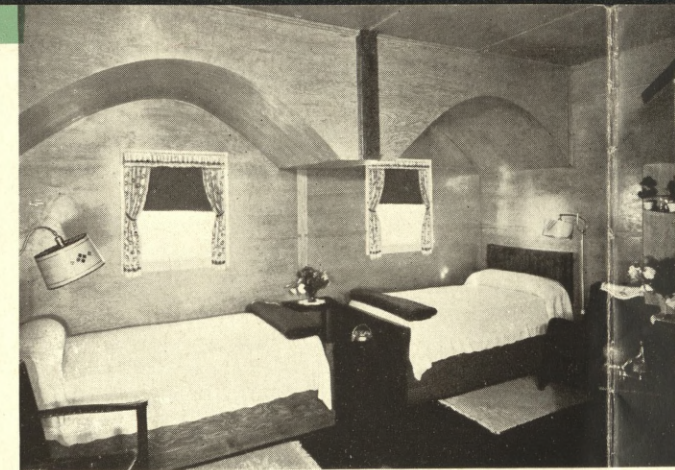
Belvedere Inn

MARANACOOK, MAINE

A Vacation Inn for the Family



On Lake Maranacook
In the Center of
Maine's Famous
Lake Region



Belvedere on this Beautiful Lake is Calling You

THIS delightful summer retreat is situated by the shore of Lake Maranacook, seven miles long, in the central part of Maine's famous lake region. Here are Wayne, Cobbosseecontee, Annabessacook, Androscoggin, Torsey and Echo lakes, all within a short distance from the Inn. The doors that open to welcome you admit you to an Inn that has all the comforts and conveniences that make vacations at BELVEDERE so abundant and joyful.

The Inn is located twelve miles from the Capital City, Augusta, fifty-five miles from Portland and only three miles from the thriving town of Winthrop, where there are both Catholic and Protestant churches. Splendid roads lead from Columbus Circle in New York to Boston by way of Fordham, New Haven, New London, Stonington and Providence, a distance of 235 miles. From Boston to Maranacook, Maine, by the way of Newburyport, Portsmouth, Biddeford, Portland, Lewiston and Winthrop is 165 miles. Those traveling by rail will find it convenient to use the through pullman service, direct from Grand Central Station, New York to Winthrop, leaving New York in the evening, and arriving at Winthrop, Maine early the next morning. Trains leaving North Station at Boston arrive at Winthrop in the morning and afternoon. Many of our guests travel by bus, from New York and Boston, arriving at Winthrop on the Greyhound or Maine Central bus line. All trains and buses are met at Winthrop; transportation from this station to BELVEDERE is furnished free.

