

Summertime in the Belgrades

... Serving the Central Maine Lakes & Kennebec River Corridor

— A Cider Mill Press Publication —

VOLUME 18, NUMBER 12



The Secrets of Autumn

by Esther J. Perne

Autumn! Breath-taking foliage! Placid lakes! Scenic views! What you see isn't what you get...

- The beauty of autumn is more than leaf deep: it is an experience - constantly changing, inviting, comforting; the last hurrah before the whites of winter; the long reward between two more bustling seasons.

- The lakes in autumn are inviting - for peacefulness, quiet and adventure. There are still warm days to swim, wade, paddle, sail, explore the shore, retrieve treasures - and trash - and bask in the rays of the slanted sunlight.

- The berries that linger into autumn are sweeter; so is the other bounty of the season: the produce, flowers, late season concerts, theatre and art shows.

- People are friendlier in autumn. Not true. They are as friendly as ever but the pace is more conducive to friendliness. Conversations edge out hasty "hi"s. Greetings become exchanges of information. Faces form personalities. Now that's friendliness.

- Exploring is more rewarding in autumn: a trail, a park, a campus, a cove, a historic site. It's the best time to venture out with no particular plan and to venture back with a much more specific knowledge of a trail, a park, a campus, a cove, a historic site.

- Mountains are easier to climb in autumn, paths are clearer, views are better. There is exhilaration and motivation in going up. There is a feeling of great accomplishment in coming



Sailing: Great Pond Yacht Club photo

down. The mountains are waiting.

- Mountains of yard work, house work and paper work are easier to tackle, too. Yeh!

- Fundraisers are more fun, special benefits more special as the energy and beauty of autumn complement the seriousness and sometimes sadness of the cause.

- Camps are cozier in autumn, cozy with sunlight streaming through windows and fires sending out a cheery glow and the scent of wood smoke.

- Indoor activities seem more sensible in autumn: libraries, story time, craft time, computer time, book time and indoor exercise are easier to put on the dwindling daylight agenda.

- Back to school is backwards. The school year is forward-facing, filled with newness, hopes, plans, expectations, goals and the boundless enthusiasm of energetic students.

- Apples, the great fruit of autumn, are amazing - to pick your own at an orchard, to munch, to pack for school.

- Autumn is romantic. That's no secret!!



Inland's LET'S GO starts September 17

Mid-Maine Marine Inc.
885 Kennedy Memorial Drive, Oakland, ME 04963
1/2 Mile West of Exit 127 off I-95 • 1-800-649-2628
www.midmainmarine.com

Check for Specials

August Clearance

Over 70 Models in Stock

- See
- Used boats,
- Get quotes online

Pontoon Boat Packages to CELEBRATE Summer 2016

Wings Hill
Inn & Restaurant

Gourmet Dining
Culinary Institute Chefs
Casually Elegant Accommodations
Attentive Service

BELGRADE LAKES
www.wingshillinn.com
207-495-2400

CIRCA 1800

Hamlin's Marine

290 West River Road, Waterville • 207-872-5660
581 Main Road North, Hampden • 207-907-4385
www.hamlinmarine.com



— End of Season Letter —

Dear Readers:

As the summer of 2016 winds down, it is time to take a look back at an outstanding season.

Looking back is rewarding. The summer offered some ideal vacation weather (yes, some do love it hot), the calendar of events presented a tantalizing overload of enrichment activities and recreation outlets, and our advertisers - the shops and businesses, entertainment and eateries - had a lot of happy visitors.

That's the way life should be.

Here at Summertime in the Belgrades we received overwhelming compliments from our readers - all very good, all very much appreciated. Our columnists and writers - especially Pete Kallin, Dale Finseth and Rod Johnson - supplied some extraordinary articles about the area. And, it was great to receive so many notices about events and opportunities that groups, organizations and institutions are sponsoring and supporting.

Once again, we thank our advertisers, who are the mainstay of Summertime in the Belgrades, we thank our readers who tell us time and again that Summertime is what connects the region (and let's them know what's going on), and we thank our staff who work very hard in a very short amount of time to produce and distribute the best of the Belgrades and beyond.

We wish everyone a great off-season. Until next summer....

Esther and Erle, Michael, Gregor, Corey and Ethan



How will you use
your Home Equity
Line of Credit?

3.25%
APR*
2 Years

After the first 24 months, rate will be variable
based on the Prime Rate, minimum
3.99%
APR*

Other rates and terms available.



Pay for college?



Knock down
high interest debt?



Fix up your home?

More than just a line, it's straight talk and a fair deal.
Call 800.303.9511 or visit SkowheganSavings.com



*Offer good through June 30, 2016. No closing costs for customers with an Integrity Plus checking account unless an appraisal is required. Maximum loan-to-value is 85% on a 1-4 family, owner-occupied residence. APR rates based on a minimum draw of \$10,000 of new money. Introductory rate of 3.25% will remain fixed for 24 months after the date of closing then convert to a variable rate based on the Wall Street Prime rate at that time. This rate will be subject to change but will not be lower than 3.99% APR or higher than 16% APR. Usual closing costs range from \$300-\$400. All loans subject to credit approval. Other restrictions may apply.



Skowhegan
Savings
Straight Talk. Fair Deals.



Welcome Dr. Danielle Gagnon!

OB/GYN in Waterville

Inland Women's Health Care is pleased to welcome home Danielle Gagnon, MD.

As a native to the area, Dr. Gagnon is coming back to her roots, making our already exceptional women's care team that much better for you.

Dr. Gagnon embodies our belief that *every woman deserves respectful care* no matter their background, from adolescence to menopause and beyond.

We're so excited she's here, and think you will be too.

**Welcoming new patients! Call 207-872-5529
and we'll get you right in.**



Inland Women's Health Care

A Department of Inland Hospital

EMHS MEMBER



180 Kennedy Memorial Drive, Medical Arts Building, Suite 104
Waterville • inlandhospital.org



**MICHAEL
BREAUULT**

*Creative
solutions for
all your Mac needs*

**Macintosh and iOS
support, based in
Western Maine,
working onsite throughout Maine**



If you have Macs, iOS devices, software or network problems, websites you'd like built, or any ideas you would like to implement using Macintosh computers, give me a call and we can discuss if I can help...

207-578-0226 • www.michaelbreault.net



Table of Contents

The Secrets of Autumn..... 1

Thanks for a Great Season 2

Neighbors Driving Neighbors To Appointments..... 3

Luckiest Boy: Curtain Calls..... 4

Take It Outside: Another Summer Wraps Up..... 5

Calendar Directory: Set Your Sights on These Sites..... 6-7

The Dams Keeper Report: Low Water..... 7

Calendar of Events: On To Autumn..... 8-9

Kennebec River Corridor Map..... 9

Map of the Beautiful Belgrades..... 10-11

Calendar and Upcoming 12

Conservation Too..... 13

Accommodations: The Best Beds Around..... 14

Notebook: Jots and Thoughts..... 14

Dining Guide: Great Eating Destinations..... 15

Designing Women Host Manchester Show..... 15

Business Directory: Handy Resources..... 16-17

BLA: Volunteers Retire; Raffle Winners..... 18

Concerts at Jewett 2016-17 Season..... 19

Neighbors Driving Neighbors



George needs a ride to the Alzheimer’s day care center three times a week so his wife can have a little relief from the full time job of caring for him. Margaret is blind and has an appointment to get root canal done on one of her teeth. Betty would like to visit her sister whom she has not seen in six months. Esther has 10 therapy appointments in the next 30 days. Millie needs to go to the food pantry.

What do all these people have in common? They do not drive, they live in Mount Vernon, Fayette, Belgrade, Rome or Vienna and they are receiving rides from volunteer drivers through a program called Neighbors driving Neighbors

Neighbors Driving Neighbors began in 2012 with concerned citizens from the towns of Vienna, Fayette and Mount Vernon coming together to discuss the problem of transportation for rural seniors. Citizens from Rome and Belgrade had also identified this as a problem and in 2014 joined the ongoing effort to organize a volunteer driving program. We received a planning grant from Maine Community Foundation. After a year of planning, form development, insurance investigation and bylaw development, we became our own non-profit 501c3 corporation and we were ready to go with helpful start up grants from The Bingham Program and The Betterment Fund in 2015.

Since November 2015 we have trained and vetted 25 volunteer drivers and given more than 122 rides. Our volunteers have traveled more than 5, 543 miles and given more than 300 hours of service. We provide free rides to residents of the 5 towns listed above who do not drive. Riders can request a ride for any purpose within a radius of 30 miles.

We are excited that our program is growing as more people hear of the service. If you or someone you know would like to participate in this program as a driver or a rider please contact Irene Goff, coordinator at 860-0677 or neighborsdrivingneighbors@gmail.com. Our web site neighborsdrivingneighbors.org also has great information and pictures!

Summertime in the Belgrades

--A Cider Mill Press Publication--
PO Box 290, Belgrade Lakes, ME 04918
Editor: Esther J. Perne, 207-495-3777 • ebelnews@earthlink.net
Advertising Director: Erle Morse, 207-495-3777 • ebelnews@earthlink.net
Layout Design: Michael Breault, 207-578-0226 • mo.breault@gmail.com
Webmaster : Gregor Smith • gregor@roadrunner.com
www.sumbelnews.com

This publication is copyrighted ©MMXVI, Cider Mill Press Publications, All Rights Reserved.

CSS Cayer
Security Services, Inc.

COMMERCIAL & RESIDENTIAL
Burglary & Fire Alarm Systems
Video Surveillance & CCTV
Access Control
24 Hour UL Listed Monitoring Service

453-9177
www.cayersecurity.com

NORTH BAY ESTATES
ROUTE 8 • NORTH BELGRADE

~ **FOR SALE** ~

Custom Built Homes
by *Craig's Carpentry*
1 & 2 acre lots
with lake views from
Great Pond overlook
Craig Alexander
cell (207) 649-3749 • crgsnbe@yahoo.com

Join us...and help protect our lakes!

Protect and Preserve

B.L.A.
EST. 1908

Belgrade Lakes Association
137 Main Street, Belgrade Lakes, Maine 04918
207-512-5150 • www.belgradelakesassociation.org



—The Luckiest Boy—

Well folks, it's time. I'm speaking of the inevitable process of when one summer season takes a bow and heads off stage. Sometimes they disperse rather grudgingly and other years they are gone in the blink of an eye. Oh yes, as we the audience clap or perhaps feel a little sad, she steps back on the stage for a curtain call. It may be for a nice long September weekend or occasionally for what we call an Indian summer. In our hearts, we know the summer play is over—but wait, at the same time a new cast is in the wings. We lose our sadness about summer's passing and become confident that the fall season will take the stage and give us a great show.

In thinking about the seasonal changes, especially summer into fall, we conjure up many scenes, noises and smells that mark the annual transition. Here are some that may ring a bell for you. I'll start with cooler nights as August nears its end, bringing cooler water in our lakes that puts an end to swimming. Along the brooks and bogs, the swamp maples are showing their first red leaf or two, hinting that full blown foliage is not far off. Shorter days are noticeable now with both sunrise and sunset somewhat shaved. People are wearing sweaters and light coats in the morning, showing plaids and corduroys as the summer shorts have been stowed for another year. Perhaps last but not least, it is the yellow school buses that have reappeared each morning and afternoon, reinforcing the fact that summer is all but gone.

Life moves on and we accept the new fall season. As we move well into September with October not far off, the leaves are becoming colorful in the higher elevations. We might go north for a "foliage ride" on Sunday to view the colorful vistas provided by Mother Nature. Our central Maine area of The Belgrades is practically empty now; the tourists have returned to places like Boston, Connecticut, New York and others. Some may return for a curtain call of their own during the Labor Day weekend, and perhaps a second call for Columbus Day. The leaves are

Summer's Curtain Calls

by Rod Johnson



Good Bye Summer, See You Next Year

now in their most spectacular dress, and we know that the annual phenomenon of seasonal changes is marching forward. Have a great fall and we'll see you next summer. THE END

Author's note #1: A question for all our readers: If you could only spend 30 days a year in Maine, when would it be? I've been pondering this for ages and fortunately don't have to decide. If I did, it would be the last half of September and the first half of October.

Note #2: Many thanks to you all for reading the Luckiest Boy stories again this summer. It's been a pleasure for me to write these. For 2013 and 2014 stories in book form, visit Day's Store in Belgrade Lakes, Maine. Also, thanks to friends Ralph and Jean Pope for their editing and to Esther and Erle for publishing the Summertime News! Until 2017, enjoy life and be well.



Experience the Legend



New England's only
distiller of Absinthe

Maine's Best Spirit, 2016
—Down East Magazine

152 Fairfield Street, Oakland, ME 04963
www.treespiritsofmaine.com

Your Family's Home for Health and Wellness



Please join us in welcoming
Jennifer Caudell, FNP
to our health center!

We are excited to have Jennifer join our
Medical team this September!

Time for Your Child's Back-to-School Checkups & Physicals!



Amy
Madden
MD

Lisa
LaGrange
FNP

Bert
Mason
DPM

Kimberly
Patnode
LCSW

Diane
Raymond
PhD, PMHNP

Michelle
Sweetser
FNP

We Accept All Insurances, MaineCare and offer Sliding Fee Scale



— Take It Outside —

Suddenly the days are getting a little shorter and I am beginning to notice leaves beginning to turn red in the wetlands and yellow high on the hillsides. It is still quite warm during the day but the nights are growing cooler. Soon it will become easier to find a parking place in the village. Like the birds and squirrels, I am double checking my summer “to do” list and trying to make sure everything gets done. My wife helps by leaving me friendly notes and reminders such as, “Call the chimney guy,” on the kitchen counter.

I have spent a fair amount of time foraging blueberries, blackberries, and elderberries. Soon I will be brewing my annual batch of blackberry-elderberry wine. I have also managed to squeeze in a few hikes here and there. On The Mountain last week, I ran into Dick and Sue Greenan hiking with Dick’s sister. It was good to see my friend, Dick, motoring along pain-free on his new hips. Hopefully he will be ready for some skiing this year when the snows come. I also met the McKenzie family from Andover, MA, who were renting a camp on Long Pond for the week. Kelly and Marty were hiking with their 6-year old daughter, Sophie, and the family dog, Cooper. Sophie was very excited as she told me all about the fun things they did while “living on the lake,” including all the stars she could see at night through the skylights of the room she slept in.

The bass fishing has continued to be excellent in Long Pond as the bass are gorging themselves on landlocked alewives. The alewives typically remain deep during the day but come up to feed near the surface at night. They come into the shallower coves

Another Summer Wraps Up Crepuscular Fishing

by Pete Kallin



Kelly, Marty, and Sophie McKenzie on The Mountain.

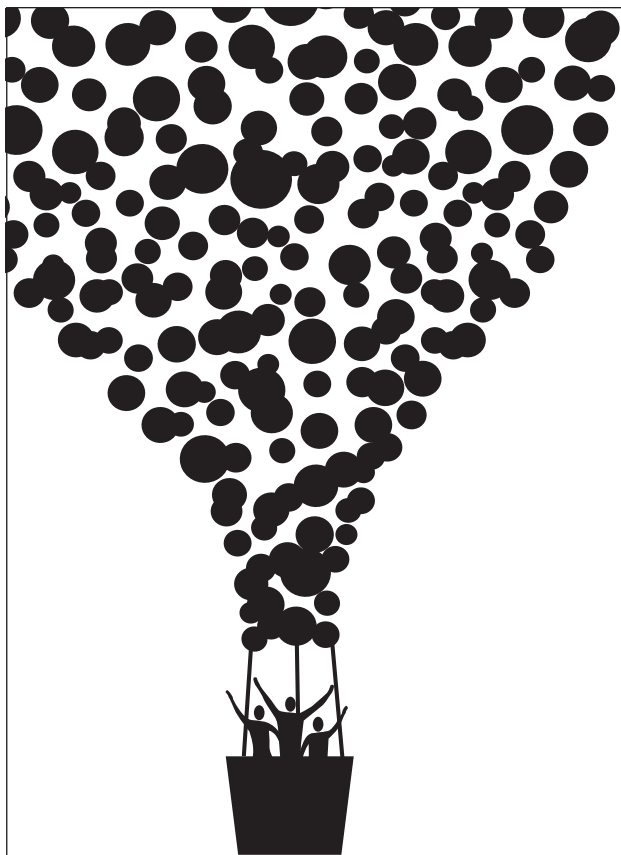


School of alewives on the surface being chased by bass.



Orup family and cousins practicing their 3-meter platform diving.

Continued on page 19....



Cancer Survivors Day

Please join us for a day of
Celebration, Education & Networking!



Milad
Bozorgnia



Patty
Morini



Adriana
Walsh

This year’s opening ceremony features three survivors who will share their stories of gratitude and purpose. This free family event is for anyone whose life has been touched by cancer — patients, families, friends . . . our community.

This year’s theme is focused on gratitude. Gratitude has the power to heal, energize and change lives. What are you grateful for?

Take the time to visit the vendors offering you free screenings, education, samplings of resources and more.

Don’t miss this wonderful experience.

Saturday, Sept. 10, 2016 • 1 - 5 p.m.

Harold Alfond Center for Cancer Care
361 Old Belgrade Road, Augusta
To learn more, call 626-4858 or visit
www.maine-general.org/cancer

MaineGeneral
Harold Alfond Center
for Cancer Care
www.maine-general.org



Rain or shine!





Calendar Directory

TOWN BY TOWN...

GREAT VISITS, AWESOME OUTINGS – ART, MUSIC, CULTURE, HISTORY, RECREATION, FARMERS' MARKETS, TRAILS, SCENIC SITES, AND MORE...

AUGUSTA

- **Viles Arboretum**, 224 acres with 6 miles of year round walking trails, including art and sculpture trail, open dawn to dusk, Visitor Center open Monday-Friday, 9 am-4 pm, admission free, 626-7989, www.vilesarboretum.org, 153 Hospital Street
- **Farmers' Market at the Arboretum**, indoors, Friday 1-5 pm
- **Art in the Capitol**, Maine Arts Commission monthly self-guided exhibits in State House hallways (Mon-Fri 8 am-5 pm), Blaine House (call for times), and Maine Arts Commission Office (8:30am-4:30 pm), 287-6746, mainearts.maine.gov
- **Children's Discovery Museum**, CDM, hands-on displays, activities, Tuesday-Thursday 10 am-4 pm, Friday-Saturday 10 am-5 pm, Sunday 11 am-4 pm, admission, 622-2209, www.childrensdiscoverymuseum.org, 171 Capitol Street
- **Danforth Gallery**, Jewett Hall, art exhibits, UMA-1234, www.uma.edu
- **Governor's Mansion**, 1830 Blaine House, Tuesday-Thursday 2-4 pm, 287-2121, www.blainehouse.org, State Street
- **Holocaust and Human Rights Center of Maine**, Michael Klahr Center, Monday-Friday 8 am-4 pm, 621-3530, www.hhrc.uma.edu, University of Maine at Augusta, off Route 27
- **Kennebec Historical Society**, Wednesday-Friday 10 am-2 pm, 622-7718, www.kennebechistorical.org, 107 Winthrop Street
- **Maine State Museum**, Tuesday-Friday 9 am-5 pm, Saturday 10 am-4 pm, \$2 adults, \$1 ages 6-18, 287-2301, www.mainestatemuseum.org
- **Maine State House**, Hall of Flags, House and Senate Rooms, Klir Beck dioramas, Monday-Friday 8 am-5 pm, book tours at Maine State Museum, walk-ins welcome 9 am-1 pm, 287-5600, www.maine.gov, State Street
- **Maine State Library**, Monday-Saturday opens 9 am, 287-5600, www.maine.gov/msl/, State Street
- **Museum in the Streets**, walking/history tour, www.augusta-maine.gov, Water Street/downtown.
- **Old Fort Western**, 1754 fort, house, store, 1-4 pm daily, admission \$6, 4-14 years \$4, 626-2385, www.oldfortwestern.org, Cony Street
- **Riverfront Park**, boat launch, Greenway Trail, playground, eastside Kennebec River
- **Kennebec River Rail Trailhead**, Maine State Housing Authority parking lot, 623-8162, www.krrt.org, Water Street
- **University of Maine at Augusta Fitness Trail**, 2 miles of wooded trails, near Civic Center, Route 27
- **Farmers' Market at Mill Park**, Tuesday 2-6 pm, 626-2305, www.farmersmarketmillpark.org/, North Water Street
- **Farmers' Market at Turnpike Mall**, 549-5112, Wednesday and Saturday 10 am-1 pm, Western Avenue

BELGRADE LAKES

- **Belgrade Lakes Market**, 320-8303, careybor@yahoo.com, Sunday 8 am-1 pm, Main Street
- **Great Pond Mailboat**, 592-1537, Monday-Saturday 10 am,

Post Office, Main St.

- **The Belgrade Community Center for All Seasons**, pool and lakefront, gym, playground, picnic area, rec programs, 495-3481, www.belgrademaine.com, 1 Center Drive
- **Union Church Coffee House**, check for schedule, 7:30 pm, \$5, 495-3599, www.unionchurchmaine.org, Main Street
- **Belgrade Historical Society**, 495-2973, belgradehistoricalsociety.org
- **Belgrade Lakes Market**, Sun 8 am-1 pm, Main Street
- **Peninsula Park on Long Pond**, picnic tables, Main Street
- **Maine Lakes Resource Center**, 512-5150, www.maine-lakesresourcecenter.org, 137 Main Street

FAIRFIELD

- **Fairfield Historical Society**, 1890 Cotton-Smith History House, every Tuesday 9 am-12 noon and 1-4 pm and second Saturday of month, 453-2998, www.fairfieldmehistoricalociety.net, 42 High Street
- **Farmers' Market**, 948-5724, Wednesday 2-6 pm, Saturday 9:30 am-1:30 pm, Nazarene Church parking lot, 81 Main Street

FARMINGTON

- **Farmington Historical Society, Titcomb House Museum**, 778-4275, Wednesday and Saturday, 11 am-2 pm, July-August, www.farmingtonhistory.org, 118 Academy Street
- **Nordica Homestead Museum**, opera singer Lillian Nordica costumes, jewelry, mementos, 778-2042, Tuesday-Saturday 10 am-12 noon and 1-5 pm, Sunday 1-5 pm, www.lilliannordica.com, 116 Nordica Lane, Holley Road
- **Contra Dance**, 491-9928, www.starleft.org 2nd Saturday of the month, all welcome, 6:30-7:30 pm family dance, 8-11 pm regular dance, admission, Grange Hall, Bridge Street, Route 43, West Farmington
- **University of Maine campus and Arboretum**, four walking tours with informal guide pamphlet to campus trees, 581-1541, www.umaine.edu/arboretum/, downtown
- **Farmers' Market**, 778-6602, Friday 9 am-2 pm, Better Living Center parking lot, Front Street; Saturday 8 am-12 noon, Main Street
- **Meetinghouse Park and Gazebo**, weekly concerts throughout summer, downtown
- **Fairgrounds**, events throughout summer, Franklin County Fair in September, High Street

GARDINER

- **Artdogs and Circling the Square Fine Art Press**, Friday 1-5 pm, Saturday 10 am-4 pm, 582-6600, www.theartdogs.com, 275-277 Water Street
- **Johnson Hall Performing Arts Center**, 582-7144, www.johnsonhall.org 280 Water Street
- **Monkitree**, art exhibits, 512-4679, www.monkitree.com, Tuesday-Friday 10 am-6 pm, Saturday 12-6 pm, 263 Water Street
- **SpinOff Studio**, 588-7297, spinoffstudio.org, Monday-Friday 8:30 am-4:30 pm, 405 Water Street
- **Farmers' Market**, 512-8022, www.gardinerfarmersmarket.org, Wednesday 2-6 pm, rain or shine, The Common
- **Kennebec River Rail Trail**, 623-8162, www.krrt.org, access near Gardiner/Randolph Bridge, 6.5 miles to Augusta
- **Waterfront Park**, picnicking, events throughout summer, Kennebec River

GREENE

- **Araxine Wilkins Sawyer Memorial**, free entertainment programs, monthly - Friday 2 and 7 pm, 946-5311, www.sawyer-foundation.com, 371 Sawyer Road, off Route 202

HALLOWELL

- **Harlow Gallery**, Kennebec Valley Art Association, 622-3813, www.harlowgallery.org Wed- Sat, 12-6 pm, 160 Water Street
- **Gaslight Theater**, 626-3698, www.gaslighttheater.org City Hall, 1 Winthrop Street
- **Museum in the Streets**, history/walking tour, www.historichallowell.org, downtown
- **Farmers' Market**, 622-1350, Sun 3-6 pm, Water Street
- **Vaughn Woods and Homestead**, 166 acre park/trails/homestead, Middle Street
- **Kennebec River Rail Trail**, www.krrt.org, to Augusta, Farmingdale/Gardiner, Water Street
- **Waterfront Park**, deck/walkway on Kennebec River, North Water Street

HINCKLEY

- **L.C. Bates Museum at Good Will-Hinckley School**, early 20th century natural history and cultural exhibits, nature trails and camps, adults \$3, up to 17 years \$1, 238-4250, www.gwh.org Wednesday-Saturday 10 am-4:30 pm, Sunday 1-4:30 pm, Route 201

KINGFIELD

- **Ski Museum of Maine**, 265-2023, www.skimusuemofmaine.org, 256 Main Street
- **Stanley Museum**, 265-2729, www.stanleymuseum.org, memorabilia/displays on photographs, violins and Stanley Steamers, Tuesday-Sunday 1-4 pm, 40 School Street

LIVERMORE

- **Washburn-Norlands Living History Center**, 18th-19th century mansion/farmstead/schoolhouse, library, chapel, 897-4366, www.norlands.org, admission, living history tours Tuesday and Thursday 1-4 pm, 290 Norlands Road

MADISON

- **Lakewood Theater**, Maine's Summer Theater, Young Performers Camp, 474-7176, www.lakewoodtheater.org, Route 201
- **Skowhegan School of Painting and Sculpture**, 474-9345, www.skowheganart.org, summer evening artists lecture series, East Madison Road

MONMOUTH

- **Monmouth Museum**, local and regional Maine history, Wednesday-Sunday 1-4 pm, 933-2287, www.monmouthmuseum-inc.org, 751 Main Street
- **The Theater At Monmouth**, The Shakespeare Theater of Maine, Cumston Hall, 933-9999, www.theateratmonmouth.org, Main Street

MOUNT VERNON

- **D.E.W Animal Kingdom**, Zoo, 293-2837, 918 Pond Rd, Route 41
- **Villages Market**, farmers/crafters, Saturday 10 am-2 pm (start end of June), next to Flying Pond Store, sharihamilton@gmail.com, Route 41



Elliot B. Thayer, PLS, PE
Andrew Dunbar, PLS, LPF, LSE
RESIDENTIAL & COMMERCIAL
SITE DESIGN
STATE & LOCAL
PERMIT APPLICATIONS
PREPARED & PRESENTED
17 Hasson Street
Farmingdale, ME 04344
582-7762
www.thayereng.com

Lakepoint

REAL ESTATE

P.O. Box 221, 221 Main Street
Belgrade Lakes, Maine 04918
Cell: (207) 592-5577
Office: (207) 495-3700
Fac: (207) 495-3707
www.belgradelakepoint.com
stephanie@belgradelakepoint.com



Stephanie Yeaton
Broker

PAUL HANNA'S PLUMBING



207-495-3805

New Homes and Remodels ~ Camps
Water and Sewer Pumps ~ Water Filtration
Paul Hanna, Licensed Master Plumber



NEW PORTLAND

- **Nowetah's American Indian Museum and Craft Shop**, 628-4981, www.nowetahs.webs.com/, daily 10 am-5 pm, free, 628-4981, 2 Colegrove Road, Route 27
- **Wire Bridge**, 1864, probably only wire suspension bridge in U.S., off Route 27

NEW SHARON

- **Farmers' Market**, Saturday 9 am-1 pm, Douin's Market, 491-9025, 150 Mercer Road, Routes 2/27
- **New Sharon Historical Society**, Saturday 1-3, 778-4167, Routes 2/27

NORRIDGEWOCK

- **Norridgewock Historical Society Museum**, 1838 building, Saturday 10 am-1 pm, 634-5032, www.norridgewockmuseum.com, Mercer Road, Route 2
- **Oosoola Park**, picnic area, great playground, boat launch, on Kennebec River, Route 8

OAKLAND

- **Macartney House Museum, Oakland Area Historical Society**, 465-7549, Wednesday 1:30-4:30 pm, 1815 home with antique furnishings and Oakland artifacts, 25 Main Street
- **Town Parks**, playground, picnic tables, swimming area, boat launch area, Belgrade Road on Lake Messalonskee and McGrath Pond Road on McGrath Lake
- **Farmer's Market**, Friday 2-6 pm, 465-3094, Pine Acres Parking Lot, 895 Kennedy Memorial Drive

READFIELD

- **Readfield Historical Society and Museum** in 1853 school-house, 685-4662, www.readfieldhistorical.org, Thursday and Saturday 10 am-2 pm or by appointment, Route 17, Readfield Depot

ROME

- **Mt. Philip Grange**, suppers 3rd Sat of month, 4:30-6 pm, all you can eat beans, cornbread, rolls, chop suey, pies, Routes 135/225
- **Trails**: Mount Philip, Route 225; The Mountain, Route 27; French's Mountain and Kennebec Highlands, Watson Pond Road; for information call 495-6039 or visit www.belgradelakes.org; maps available at BRCA, 137 Main Street, Belgrade Lakes

SIDNEY

- **New England Music Camp**, concerts free and open to the public, Bowl-in-the-Pines on Lake Messalonskee, 465-3025, www.nemusiccamp.com, 8 Goldenrod Lane, Route 23
- **Sidney Historical Society**, 724-8032, www.sidneyhistoricalsociety.org, 2986 Middle Road
- **Silver Spur Riding Club**, horse shows, River Road, Route 104

SKOWHEGAN

- **Margaret Chase Smith Library**, residence, home, museum exhibits, 474-7133, www.mcslibrary.org, free, Monday-Friday, 10 am-4 pm, 54 Norridgewock Ave.
- **History House Museum**, 1800s local history and culture, heirloom gardens, free, Tuesday-Saturday, 10 am-4 pm, 474-6632, www.skowheganhistoryhouse.org, 66 Elm Street
- **Fairgrounds**, weekly horse shows/competitions, free public

events, covered arena, Skowhegan State Fair in August, 474-3621, Madison Avenue, Route 201

- **Farmers' Market**, Wednesday 3-6 pm, Saturday 9 am-1 pm, weekly entertainment, 938-3906, Somerset Gristmill parking lot, downtown

SMITHFIELD

- **Fairview Grange**, 362-2791, Route 8
- **Smithfield History Society "The Groves House,"** 634-4392, 21 Lakeview Drive
- **Sunbeam Roller Rink**, 362-4951, 830 Village Rd, Route 8
- **Sunset Camps**, public beach, 362-2611, www.sunsetcamps.com, 834 Village Road, Route 8

UNITY

- **Unity College Centre for the Performing Arts**, folk genre music, 568-3147, www.unitymaine.org, 42 Depot Street

WATERVILLE

- **Aqua City Actor's Theatre (ACAT)**, 873-7000, www.acattheatre.org, Waterville Opera House Studio Theater, Main Street
- **Museum in the Streets**, downtown history/walking tour, www.themuseuminthestreets.com/waterville.htm
- **Head of Falls Park/Two Cent Bridge**, historic foot bridge over Kennebec River connecting Waterville and Winslow, Front Street
- **Common Street Arts**, 872-2787, www.commonstreetarts.org, Wednesday-Saturday 12-6 pm, 16 Common Street
- **Colby College Museum of Art**, 859-5600, www.colby.edu/museum/ Tuesday-Saturday 10 am-5 pm, Sunday 12-5 pm, free admission, Colby College Campus, Mayflower Hill
- **Colby College Special Collections**, Miller Library, Monday-Friday 10 am-12 noon and 1-4 pm, free admission
- **Thomas College Art Gallery**, 180 West River Road
- **Waterville Historical Society and Redington Museum**, 1814 home and pharmacy, 872-9439, www.redingtonmuseum.org. Tuesday-Saturday tours at 10 and 11 am, 1 and 2 pm, 62 Silver Street
- **Waterville Opera House**, 873-7000, www.operahouse.com, 93 Main Street
- **Farmers' Market**, Thursday 2-6 pm, 680-2055, www.watervillefarmersmarket.org, The Concourse parking lot

WAYNE

- **Farmers' Market**, 685-4657, <http://waynefarmersmarket.weebly.com>, Saturday 9 am-noon, Town Green, at the Mill Pond, Main Street

WILTON

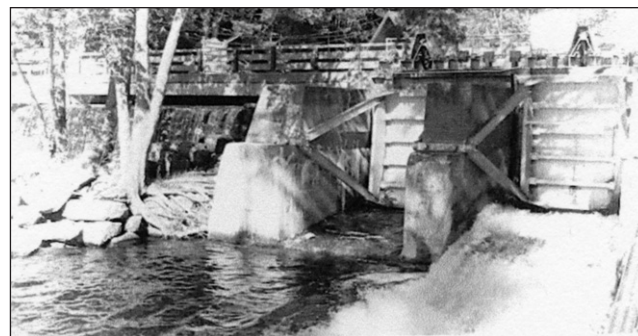
- **Wilton Farm & Home Museum**, 645-2091, 645-4578, www.thewiltonfarmandhomemuseum.org, Saturday 1-4 pm or by appointment, 10 Canal Street

WINSLOW

- **Fort Halifax on the Kennebec River**, historic fort tower, park, Route 201

WINTHROP

- **Norcross Park**, playground, picnic site, boat launch on Maranacook Lake
- **Farmers' Market**, 446-2899, Tuesday and Saturday 9 am-1 pm, town office parking lot, 17 Highland Avenue



The Dams Keeper Report

Well the forecasted rain we received a couple of days ago amounted to a paltry 6/10" – hardly enough to make a dent in our water levels. Our ponds are still in desperate need of rain.

Great Pond, is holding at 7.56" below full pond with Long Pond currently now at 9.72" below full. Like the Village spillway dam, both Wings Mill gates have remained completely closed since early May.

Both Great and Long Ponds are still losing about 3/10" per day so it's easy to do the math and calculate when it's time to pull your boat! For those of you on Long Pond, the State just relocated a few of the buoys on the Castle Island thoroughfare and as a result it is a tough course for the pontoon boats to navigate and even more difficult for those with inboards due to the low water and adjacent rocks. I confirmed this yesterday and would heed the warning. If not, you could be in for a surprise!

And another reminder for those with boat lifts, now would be a good time to see if you can still get your boat off. Apparently this is the price we're paying for this incredibly beautiful weather!

Dick Greenan

Secretary, Belgrade Lakes Watershed Dams Committee

Give Your Cat the Freedom To Come & Go

No More Opening the Door For Your Pet!



CAT Cat American Toy
617-529-9366
see website
petswindow.org



Have a bucket list? Want a new experience?



C+E SEGWAYS

Located in Manchester, Maine

We offer tours by appointment only for ages 12 and up.

Safe, quiet and a wicked good time!

Reasonable Rates!

(207)215-4529

Call now to book a new adventure with us!

WATCHES • DIAMONDS
EXPERT WATCH REPAIR • STONESETTING • GOLDSMITHING

Larsen's Jewelry

SERVING YOU SINCE 1962



57 MAIN STREET
WATERVILLE, MAINE 04901

MARK A. LARSEN

207-872-6301
1-800-697-1874

J & M Logging, Inc.

622-6353

Cut to order
in lengths from 14" to 23"

Firewood

Green Certified Wood, Seasoned, & Ash
Cut, Split & Delivered

853 Civic Center Drive, Augusta, ME 04330

BELGRADE BOAT STORAGE

FREE LAKESIDE BOAT
PICKUP & DELIVERY

DARE TO COMPARE

Best Prices on Inside,
Outside Boat Storage,
Shrinkwrapping &
Winterization

Craig Pooler
Cell 207-314-3287 • Office 207-495-3421
Email: cpooler1@myfairpoint.net
www.BelgradeBoatStorage.com



— Calendar —

Wednesday 8/24 through Saturday 8/27 – Blistered Fingers Family Bluegrass Music Festival, 12 live bands, extra large tent area, food concessions, camping, security, www.blisteredfingers.com, 873-6539, Litchfield Fairgrounds, Litchfield.

Wednesday 8/24 through Saturday 8/27 – "Hello Dolly," Lakewood Theater, 474-7176, Rt. 201, Madison.

Thursday 8/25 through Sunday 8/28 – Anson-Madison Day, community celebration, competitions, sales, food, parade, more, on the Kennebec River, Route 16, Anson and Madison.

Thursday 8/25 through 9/5 – Windsor Fair – Extensive agricultural, art/crafts exhibits, large midway, animal pull events, harness racing, food, concessions, historical section, more, 549-7121, www.windsorfair.com, off Route 3, Windsor.

Thursday 8/25 – December '63, Frankie Valli & The Four Seasons Tribute Concert ticketed event, 7:30 pm, 844-476-6976, Bowl in the Pines, New England Music Camp, Snow Pond Center for the Arts, off Route 23, Sidney.

Friday 8/26 – Seth Pillsbury, jazz and classical guitar, Market Square Melodies, free live music on your lunch hour, 11 am-1 pm, Market Square Park, Water Street, Augusta.

Friday 8/26 – "In The Blood," presented by Sumner McKane, documentary film and multimedia presentation illustrating the life, history and character of turn-of-the-century Maine lumbermen and river drivers, free admission, 2 and 7 pm, 946-5311, Sawyer Foundation, 371 Sawyer Road,

Greene.

Friday 8/26 – The Bearnstow Dancers in Concert, presented by Bearnstow and Vienna Arts, admission free, contributions gratefully accepted, 7:30 pm, 293-2280, Union Hall, off Route 41, Vienna.

Friday 8/26 through Sunday 8/28 – "Black Coffee," by Agatha Christie, \$12 adults, \$10 students and seniors, 7:30 pm Friday and Saturday, 2 pm Sunday, 626-3698, Gaslight Theater, Hallowell City Hall, Winthrop Street, Hallowell.

Saturday 8/27 – New Balance Family 5K, to help provide school supplies and holiday gifts to children in foster adoptive and kinship care, registration begins at 8 am 800-833-9786, New Balance Factory Store, 12 Walnut Street, Skowhegan.

Saturday 8/27 – Fine Art and Craft Show, hosted by Designing Women, high quality and beautifully handcrafted pottery, handbags, glasswork, handwoven clothing and accessories, home accents, stained glass, sculptural ceramic art, Maine mystery writers and children's book authors, live music, \$2 donation and lunch/refreshment proceeds to benefit Winthrop's Sexual Assault Crisis and Support Center, 9:30 am-4:00 pm, 582-7985, Longfellow's Greenhouse, 81 Puddledock Road, Manchester.

Saturday 8/27 – 3rd Annual Friends and Family Fun Day to benefit PALS No-Kill Cat Shelter, silent auction, face painting, yard sale, bake sale, book sale, games, crafts, art, raffles and more, 11 am-3 pm, 395-4274, 188 Case Road, Winthrop.

Saturday 8/27 – Rocks Rock!! Come explore rocks, make a small collection to bring home, try opening a geode, look under a backlight, gaze through fiber optics, 1 pm, 238-4250, L.C. Bates

Museum, Route 201, Hinckley.

Saturday 8/27 – Potluck Supper, \$6 adults, \$3 children 12 and under, 5:30 pm, Smithfield Baptist Church, North Shore Drive, Smithfield.

Saturday 8/27 – Ruth Hill singer/songwriter, 7 pm, \$10 at door, 293-2674, Vienna Union Hall, off Route 41, Vienna.

Sunday 8/28 – Concert at Norcross Point, Mike Whitehead Group, some of the best jazz in the state, free, 2-4 pm, 620-6231, Norcross Point, Maranacook Lake, off Bowdoin Street and Memorial Drive, Winthrop.

Sunday 8/28 – "The Sunday Project," Coburn Park Concert, 5-6:15 pm, free, bring lawn chairs and blankets, 474-0527, Coburn Park Bandstand, Route 2, Water Street, Skowhegan.

Sunday 8/28 and Monday 8/29 – Auditions for "Born Yesterday" with Monmouth Community Players, show dates October 28-30 and November 4-6, auditions at 6 pm, raymondmfletcher@yahoo.com, Cumston Hall, the Theater at Monmouth.

Sunday 8/28 – A Julia Child evening, starring country singer Linda Kenyon, fun-filled and sumptuous, a fundraiser for Wayne Community Church, \$20, 7 pm, Ladd Rec Center, Wayne.

Monday 8/29 – Waterville Police Department Charity Golf Classic, to benefit Waterville's High Hopes Club House, 18 holes, cart, lunch, scramble format, \$80 per person, Waterville Country Club, off Kennedy Memorial Drive, Oakland.

Tuesday 8/30 – State of the Bats, presented by Logan Parker, 6:30 pm, 495-3617, Maine Lakes Resource Center, Main

Street, Belgrade Lakes.

Tuesday 8/30 – Auditions for Snow Pond Youth Symphony, information, application, practice and concert schedules available at 621-4166 or pinelandsuzuki@gmail.com, 6:30 pm on, Snow Pond Center for the Performing Arts, New England Music Camp, Route 23, Sidney.

Tuesday 8/30 – Vishten in Concert, internationally acclaimed Acadian-style music, 7 pm, \$15, 778-0111, Old South Church, UCC, 235 Main Street, Farmington.

Wednesday 8/31 – "Discovering New England Stone Walls" author Kevin Gardner, free and open to the public, 6-8 pm, 495-3508, Belgrade Public Library, Depot Road, Belgrade.

Thursday 9/1 through Monday 9/5 – Harmony Free Fair, free admission, free parking, stage shows, animal and mechanical pulling, midway, demo derby, livestock and exhibit hall, www.harmonyfreefair.org, Harmony.

Thursday 9/1 through Sunday 9/4 – "Of Mice and Men," 474-7176, Lakewood Theater, Route 201, Madison.

Thursday 9/1 – Deadline for artist applications for Community Supporting Artists program, pairing artists and farmers for 2017 growing season, 11 pm, 622-3813, Harlow Gallery, Water Street, Hallowell.

Friday 9/2 – Mo' Hope, Americana music, Market Square Medodies, free music on your lunch hour, 11 am-1 pm, Market Square Park, Water Street, Augusta.

Friday 9/2 through Sunday 9/4 – Mainely Hunters & Jumpers Horse Show, free

MAINE~LY ELDER CARE

"Caring for the ones who cared for us"



In - Home Nursing • Personal Care Services • Homemakers
• Emergency Response Systems • Transportation Services

STATE REGISTERED PERSONAL CARE
AND HOME MAKER AGENCY

465-3249

28 Center St., Oakland, Me 04963

www.Maine-lyElderCare.com

denise@Maine-lyElderCare.com

DAY'S REAL ESTATE

"The Waterfront Specialists" 207-495-3111

262 Augusta Road (Route 27) • Belgrade Lakes, Maine 04918 •

Web: www.daysrealestate.com • e-mail: daysrealestate@roadrunner.com



LONG POND ~ Terrific westerly views from this classic Maine cottage with 200' +/- shorefront. Cottage also has a 1 BR bunkhouse, well, new leach field and new dock. All this await your summer fun! **\$259,900**



GREAT POND ~Quaint, private 2 BR cottage sitting at the water's edge with 200' +/- shorefront and additional building with its own dock & many possibilities. Come get your piece of the lake! Motivated seller. **\$194,900**



SNOW POND ~ Spacious 3 BR + loft cottage at the water's edge with open concept, pine interior and private dock. Wonderful location. Come make your summer memories on the lake! **\$219,000**



admission, covered arena, concessions, 532-3268, Fairgrounds, Madison Avenue, Route 201, Skowhegan.

Saturday 9/3 – 5K Race for the Lakes, sponsored by the Belgrade Regional Conservation Alliance, \$20 pre-registration by 8/27, \$25 day of race, visit www.belgrade-lakes.org to register, 495-6039, 8 am, Camp Runoia, Point Road, Belgrade.

Saturday 9/3 - Bird Migration Walk, 10 am. 238-4250, L.C. Bates Museum, Hinckley.

Saturday 9/3 - Skowhegan Craft Brew Festival, local fare, live music, 2-7 pm, 612-2571, Water Street, downtown Skowhegan.

Monday 9/5 - Oosoola Park Family Fun Day (aka Frog Day), parade 9 am down Main Street to Oosoola Park, famous frog jumping contests, booths, food, family events, children's craft and game area, boat landing, 634-2252, Oosoola Park, Route 2, Norridgewock.

Wednesday 9/7 – Belgrade Regional Conservation Alliance Annual Meeting and dinner at Alden Camps, reserved limited seating, 5:15 pm, 495-6039, Alden Camps, East Pond, Route 225, Oakland.

Wednesday 9/7 through Saturday 9/10 – "Of Mice and Men," 474-7176, Lakewood Theater, Route 201, Madison.

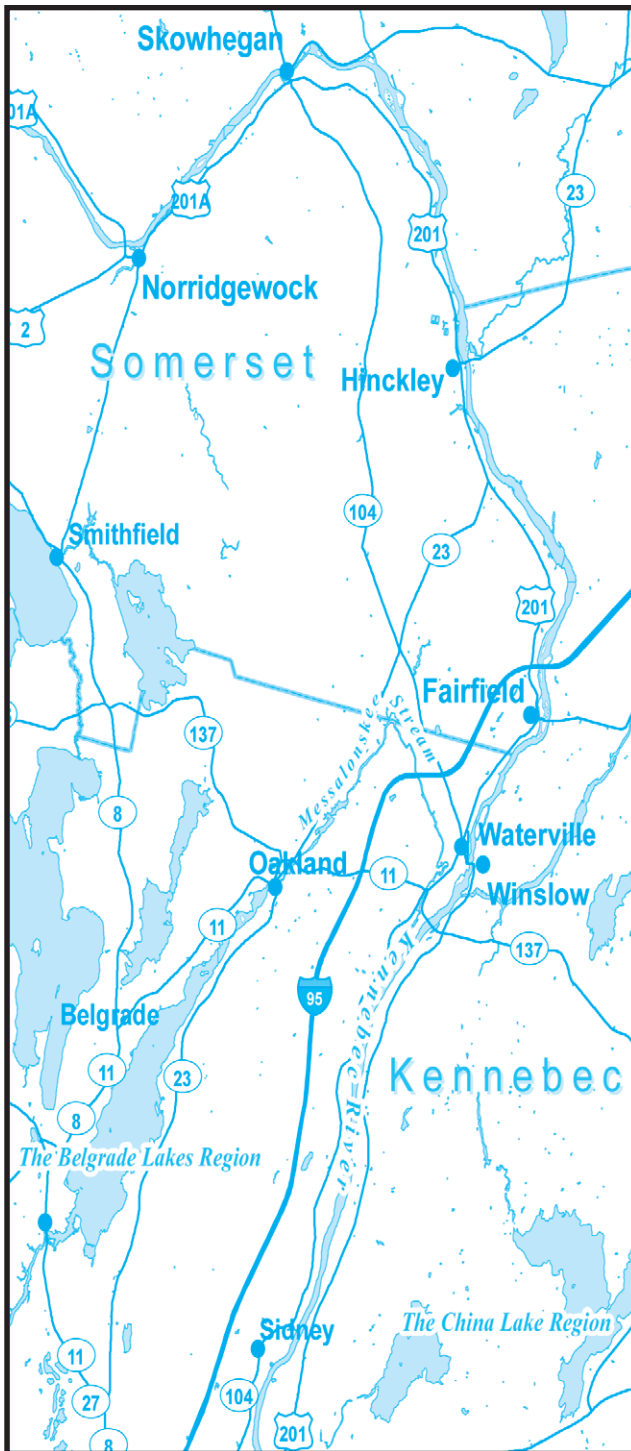
Friday 9/9 through Sunday 9/11 - Litchfield Fair, agricultural displays, pulling events, barrel racing, food, small midway, easy parking, children's activities - pig scramble, coin hunt, bike giveaway, 353-8105, litchfieldfair.com, Litchfield.

Friday 9/9 – Peter Mezoian, banjoist, 2 and 7 pm, free admission, 946-5311, Araxine Wilkins Sawyer Memorial, Sawyer Road, Greene

Saturday 9/10 and Sunday 9/11 - Autumnfest Horse Show, free, open to the public, covered arena, 474-2947, Skowhegan Fairgrounds, Madison Avenue/Route 201, Skowhegan.

Saturday 9/10 - Teal Ribbon Race, walk, jog or run, to benefit Sexual Assault Prevention and Response Services, register by 8/31 \$15 and free t-shirt

Kennebec Corridor



<http://5k.sapars.com>, at race 9 am \$20, race at 10 am, 778-9522, Farmington.

Saturday 9/10 - Public Chicken Barbecue and Yard Sale, \$8, 948-2455, 11:30 am until gone, Masonic Lodge, 60 Gordon Hill Road, Route 139, Thorndike.

Sunday 9/11 – Lake George-Somerset Sports & Fitness point-to-point Sprint Triathlon, 474-2224, Lake George Regional Park, Route 2, Canaan.

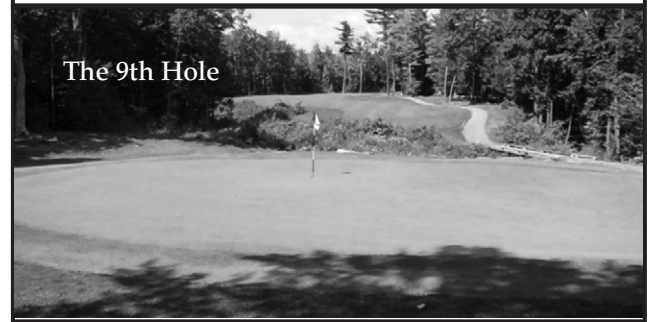
Continued on page 12...

**THIRTY-SIX
GREAT REASONS**
MAINE'S ONLY 36-HOLE
PUBLIC GOLF COURSE
THE LARGEST GOLF FACILITY
NORTH OF BOSTON

Championship Golf, Full Pro Shop,
Driving Range, & Modern Clubhouse.
Groups Welcome

Natanis
GOLF COURSE

Webber Pond Road,
Vassalboro, ME • 207-622-3561



The 9th Hole

LakeHouse™
Renovations

Design • Build • Renovate



Traditional Style Camps,
Cottages and Lakefront Homes
207.242.3663

www.lakehousedesignbuild.com

ACME LAND SURVEYING, LLC
Professional Land Surveyors – Professional Foresters
Property Surveys, Subdivisions, Topographic Surveys, MLIs,
Elevation Certificates/LOMs, ALTA/ACS Surveys,
Deed Research, Wetland Delineation, Forest Management

108 Fairbanks Rd., Suite 5
Farmington, ME 04938
Website: www.acmelandsurveying.com

Tel. (207) 778-4081
Toll Free (800) 778-4081
Email: info@acmelandsurveying.com

Expanded in 2014 to Better Serve Our Customers

**Belgrade Lakes
Marine & Storage, Inc.**

Winter Storage for Summer Vehicles

Secure newer storage facilities accommodate boats on trailers, autos, and the largest RVs in 3 buildings totaling over 21,000 sq. ft. Electrical charging outlets are available. Reasonable rates for real protection from extreme winter storms and sun damage.

207-495-2378 • www.belgradelakesmarine.com

366 Augusta Road, Route 27, Belgrade, ME

Whatever needs updating at your house, we have the **home equity loan** to get you started.

5-year 10-year
4.21% APR¹ 4.61% APR¹

Apply Today! Stop by your local Maine State Credit Union branch or call us at 623-1851.

¹The rate listed above is a fixed rate for a second mortgage. Closing costs and certain property/equity requirements apply. Rates presented above are for individuals with credit scores of 680 or higher. Individuals with credit scores of 679 and lower will receive a rate of 1.00% higher for each loan type. Loans are subject to approval and certain conditions may apply. ²The annual percentage rate (APR) for the 5-year home equity loan is 4.213% and is 4.612% for the 10-year fixed home equity loan. The APR is subject to change at anytime. Repayments for the 5-year loan are \$18.42 per \$1,000 for 60 months and \$10.36 per \$1,000 for 120 months for the 10-year loan. Federally insured by NCUA. Equal Housing Lender.



Lynch

LANDSCAPING INC
FOR THOSE WHO DESIRE QUALITY

Design - Install - Maintain

Lake Smart Certified for all your Waterfront Needs

Plant Installation, Patios, Walks, Permeable Pavers Driveways, Plant Maintenance, Mowing, Fertilizing, Spring & Fall Clean Up

Serving all of Central Maine

474-2420

www.lynchlandscaping.com

Belgrade Vacation Rentals

CAMP & COTTAGE RENTALS

Located next to Pete's Pig Barbecue!

Contact Us Today!

(207) 495-4011

www.BelgradeVacationRentals.com

Own A Property? We Will Rent it for You!

RAILROAD SQUARE CINEMA

Showing the Best of World and American Cinema

17 Railroad Square, Waterville, Maine, 04901

24-hour movie info:
207-873-6526

www.railroadsquarecinema.com

Home of the
Maine International Film Festival
(July 8 - 17, 2016)
www.MIFF.org

A USABLE PAST

American Folk Art at the Colby College Museum of Art

July 9, 2016–January 8, 2017

Colby College Museum of Art, Waterville, Maine
colby.edu/museum 207.859.5600

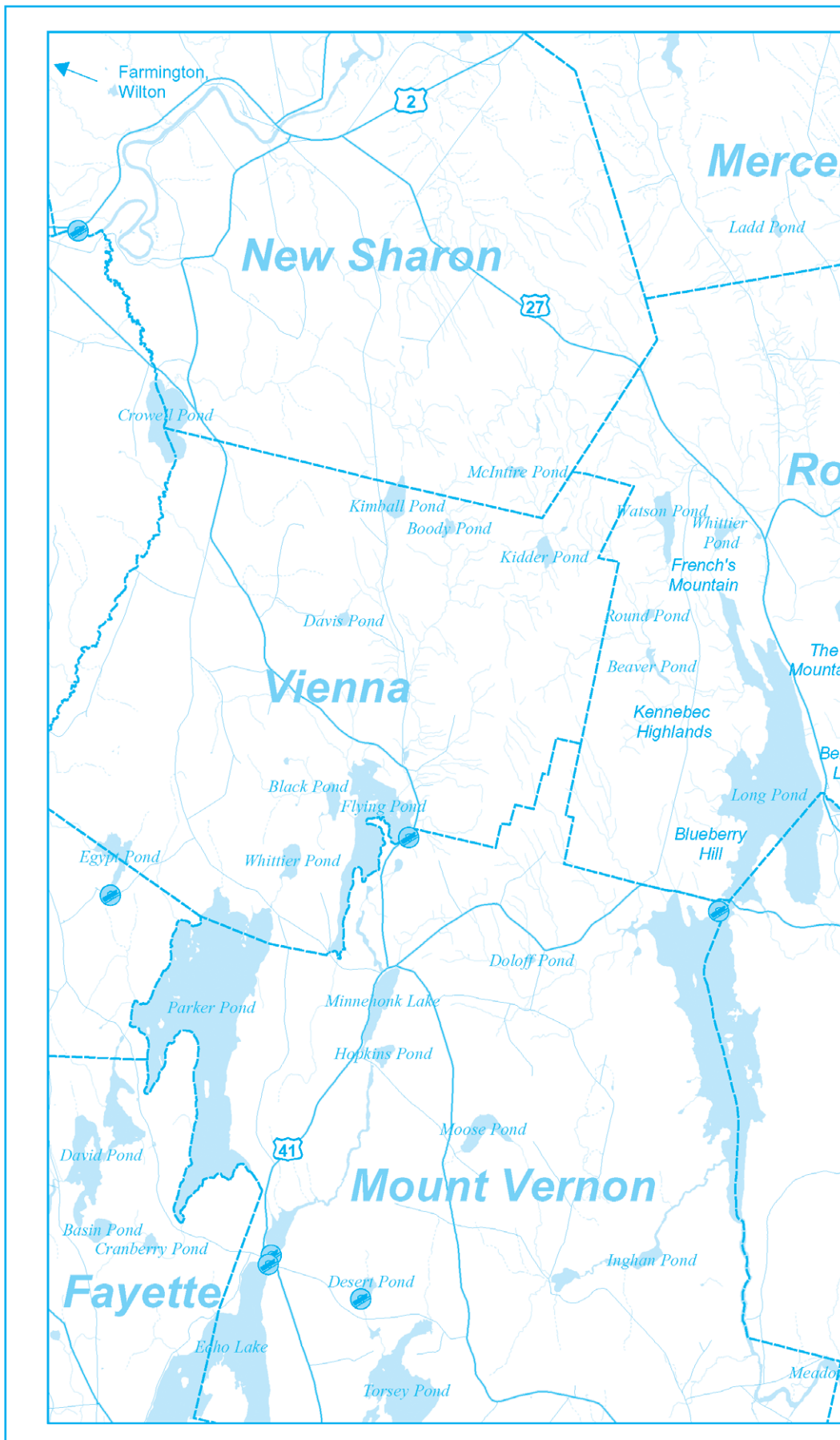
ST. MICHAEL SCHOOL

56 Sewall Street, Augusta, ME 04330
207.623.3491 www.smsmaine.org

**NEW Fall 2016...
PRE-K for 3 year-olds!**

St. Michael School will be opening a new Pre-School Program for 3 year-old children starting in the fall. This Program will have a curriculum, daily schedule and an overall program that is consistent with the mission and values that have been associated with a St. Michael School education. Register your child TODAY!

**A Legacy of Excellence,
a Foundation for the Future.**



EYE CARE OF MAINE

"Your Sight is Our Vision"

- Comprehensive Eye Exams
- Eyewear Center / Contact Lenses
- State of the Art Cataract Surgery
- Retinal Diseases and Glaucoma
- LASIK Refractive Surgery
- Laser Surgery
- Oculoplastic Diseases
- Botox, Juvederm and Latisse

• Ambulatory Surgery Center

www.Maine2020.com

Steve R. Witkin, M.D.

Peter C. Kohler, M.D.

James R. Putnam, M.D.

Marc B. Daniels, M.D.

Helen Bell-Necevski, O.D.

Lorie Lepley Parks, O.D.

Michael C. Parks, O.D.

Ian M. Jones, O.D.

325A Kennedy Memorial Drive
Waterville, Maine 04901

873-2731
(800) 660-3403

RIVERSIDE FARM

RESTAURANT & WINE MARKET

Restaurant Hours:

Brunch
Saturdays & Sundays - 10am-2pm

Lunch
Tuesdays - Fridays - 11am-2:30pm

Dinner
Thursdays - Saturdays - 5:30pm-8:30pm

Wine Market Hours:
Tuesdays - Fridays - 10am-5:30pm
Saturday - 10am-3pm

291 Fairfield Street
Oakland, ME 04963

For reservations call 207-465-4439

RiversideFarmMarket.com



RIVERFRONT BARBEQUE & GRILLE

WORLD CLASS BARBEQUE

SEAFOOD, PASTA, & VEGETARIAN ENTREES

207.622.8899

300 WATER STREET, AUGUSTA, MAINE

WWW.RIVERFRONTBBQ.COM

FULL SERVICE DINING * CATERING * BULK TAKE OUT



The Gin Mill

Augusta, Maine

Augusta's finest upscale lounge featuring
fine wine, martinis, and over 100 brands
of beer from Germany to Japan

Thursday thru Saturday 3:00pm until Midnight,
Above the Riverfront Barbeque & Grille
at 300 Water Street
207.620.9200

Lakepoint REAL ESTATE

"Put The Team to Work For You"

207.495.3700

GAIL RIZZO 207-242-8119
gail@gailrizzo.com



PAT DONAHUE 207-730-2331
pldcamp@msn.com



GREAT POND, BELGRADE:
150' Lakefront. 3BR cottage
at water's edge, plus year
round 2BR above 2 car
garage. Sandy swim area,
sunset views. #1262021
\$449,900



**GREAT POND,
BELGRADE:** 50' lakefront.
2BR/1BA Post and Beam
Cottage. Covered porch
with sunset views. Short
distance to the Village.
#1264450 \$379,000

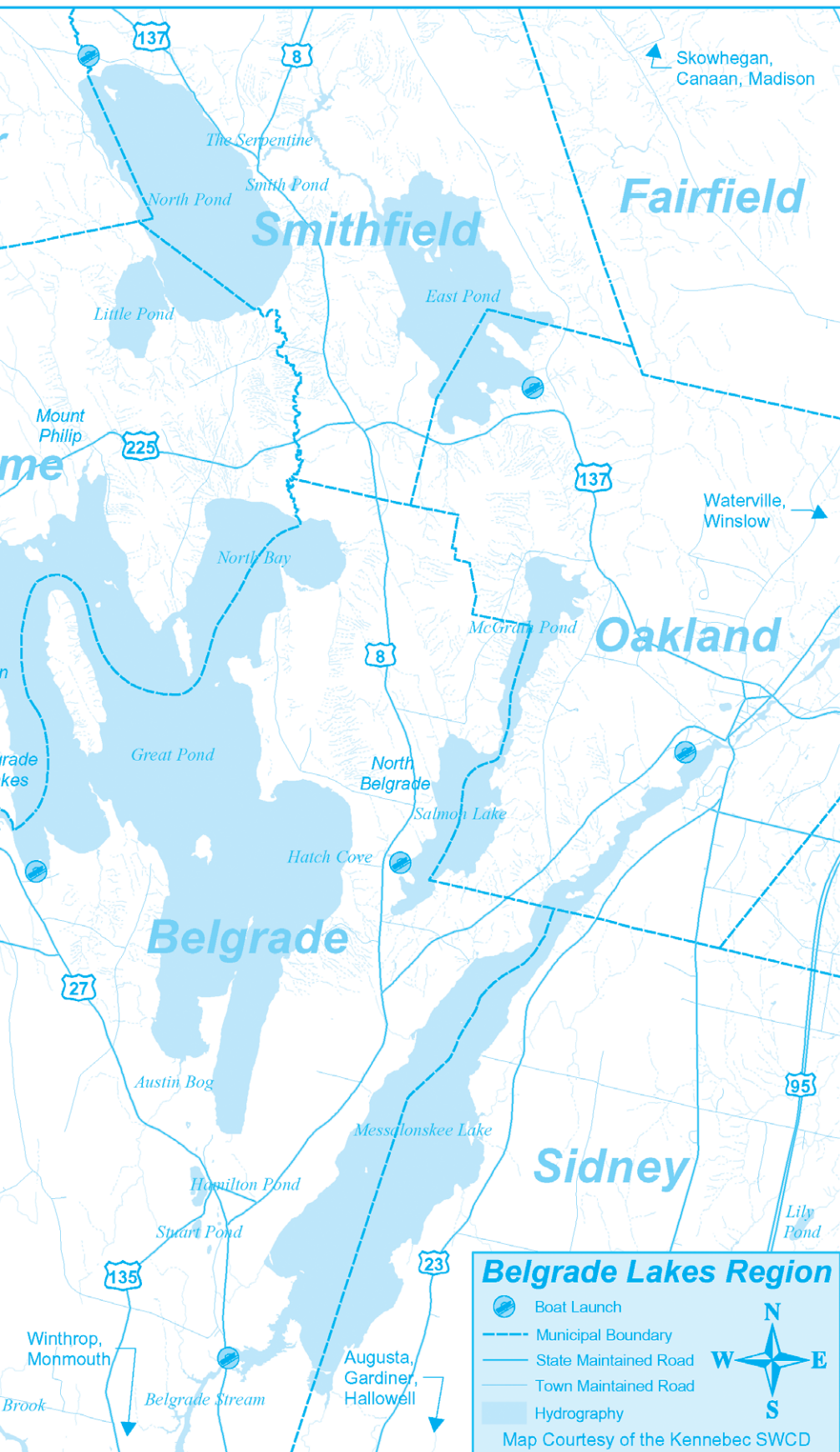


**SALMON LAKE, OAK-
LAND:** 3BR/4BA, field-
stone fireplace, exercise
rm, stone patio, 340'
waterfront, on a point. A
must see! #1221647
\$799,900



EAST POND, SMITHFIELD:
4BR/4BA Contemporary on
16+ acres with 920' +/-
lakefront. Many amenities
w/guest cottage 25' from
the lake. #1212172
\$849,000

221 Main Street, Belgrade Lakes, Maine 04918



Visit the Businesses on Marina Drive

sadiesboathouse@hotmail.com

• 207-495-4045 •

Like us on Facebook!

Open Friday & Saturday

from 5 PM – 9 PM



Family Fun Days BOAT RENTALS



**GREAT
POND
MARINA**
INCORPORATED
O'Brien Water-Sports Pro Shop

**Don't Be Left
Standing On
The Dock**

**Call for
Reservations:
495-2213**

www.greatpondmarina.com
Belgrade Lakes

Open Every Day 8-5

ShoreStation®

The original since 1959

Why Shore Station?
Docks & Boat Lifts
Dependable, Rugged.

Docks = Stability
A-frame stance handles
a 6,000lb boat

Boat Lifts 1,500 to 15,000 lbs.

Shoreland'r Trailers

Brown Dock Services

www.browndockservices.com

George: 495.2600 Jason: 316.7514

Display Docks & Lifts at Great Pond Marina



ShoreStation® The original since 1959

Clark Marine

Manchester - Monmouth - Belgrade

We Service
Honda, Mercury, Evinrude,
and Yamaha Motors

Keeping You On The Water!

207-622-7011

57 Puddledock Rd.

Manchester, Me.



Check-Out Our
New Boats



www.ClarkMarineMaine.com

G & L CONTRACTING

- New Construction
- Additions
- Dock Installations
- Construction

www.gandlcontractingmaine.com

207-495-9009

Lakeside Cottage Rentals



**Exclusive
Lakeside
Rentals in the
Belgrade
Lakes Region**

Located off Rt 27 in Belgrade Lakes

(207) 495-4046

www.LCRentals.com

Waterfront Property Owners

We offer full service rental management services. Please
call if you are interested in having us manage your home.



....Calendar/Upcoming continued from page 9

Thursday 9/15 through Sunday 9/25 – "Boeing Boeing," comedy, 933-9999, Cumston Hall, The Theater At Monmouth.

Thursday 9/15 through Sunday 9/18 and Wednesday 9/21 through Saturday 9/24 - "Confessions of a Dirty Blonde," 474-7176, Lakewood Theater, Route 201, Madison.

Thursday 9/15 - "French Canadian Immigrants," by Rachel Desgrosseilliers, sponsored by Belgrade Historical Society, 7:30 pm, Maine Lakes Resource Center, Main Street, Belgrade Lakes.

Friday 9/16 through Sunday 9/18 - Downeast Medal Finals Horse Show, free admission, covered arena, concessions, 329-0514, Fairgrounds, Madison Avenue, Skowhegan.

Saturday 9/17 and Sunday 9/18 - Community Boutique Sale, beautiful "gently worn" clothing for men, women and children, domestics and accessories, 100% of proceeds to benefit Wayne Community Church outreach program, Saturday 8 am-1 pm, Sunday 10:30 am-12:30 pm, 593-9393, Community Church, Wayne.

Saturday 9/17 - Harvest Heritage Tea presentation by author/researcher Jan Eakins on her study of Maine families and the California Gold Rush, co-sponsored by

the Bloomfield Garden Club and the Skowhegan History House Museum, 1-3 pm, free to the public, refreshments offered, 474-6632, 66 Elm Street, Skowhegan.

Saturday 9/17 – Monthly Bean Supper, all you can eat, to benefit all the 3rd grade students in Rome, Belgrade, Sidney and Oakland to take part in the Scholastic Reading Program, 4:30-6 pm, tickets \$7, under 5 free, family of 4 or more \$20, Mt. Philip Grange, Routes 225 and 27, Rome.

Sunday 9/18 through Saturday 9/24 – Farmington Fair, large midway, exhibit halls, livestock exhibits, animal pull events, harness racing, food, fun, special days for seniors, children, 778-6083, Fairgrounds, Farmington.

Sunday 9/18 – 7th Annual Debbie Myers and Friends Maine's Homeless Veterans Benefit Concert, showcasing "A Celebration to Conway Twitty and Loretta Lynn" with son Michael Twitty, plus other talented national and Maine country music performers, 12 pm show starts, www.mhvhbc.org, 712-2392, Civic Center, Augusta.

Thursday 9/22, Tuesday 10/27 and Thursday 10/29 - Literacy Volunteers Waterville Area 3-day tutor training workshop, 5-8 pm, 873-7786, Educare, Waterville.

Friday 9/23 – 23rd Annual Rise 'N Shine 5K Road Race, sponsored by Kennebec Savings Bank, 6:28 am, 622-9622, Kennebec Valley YMCA, Augusta.

Friday 9/23 through Sunday 9/25 - The Maine Event Horse Show, free, open to the public, covered arena, 272-0082, Skowhegan Fairgrounds, Route 201 / Madison Avenue, Skowhegan.

Friday 9/23 through Sunday 9/25 – Common Ground Fair, a celebration of rural life, demonstrations, Maine-organic produced foods and crafts as well as livestock exhibits, gates open 9 am, www.mofga.org, 568-4142, Fairground, Unity.

Friday 9/23 – Ralph & Averill Lovely, bluegrass, country and hillbilly swing, free admission, 2 and 7 pm, 946-5311, Araxine Wilkins Sawyer Foundation, Sawyer Road, Greene.

Saturday 9/24 - 5K Walk/Run for Pancreatic Cancer Research, registration 8 am, Kids Run Run 9 am, 5K 10 am, awards 11 am, 1-866-789-1000, Coburn Park, Route 2, Skowhegan.

Friday 9/30 - Sawyer Brown, award-winning country band. 8 pm, 873-7000, Waterville Opera House, Main Street, Waterville.

Sunday 10/2 through Sunday 10/9 – Fryeburg Fair, Maine's largest agricultural fair. Beautiful setting in prime foliage season, exhibit halls, museum, harness racing and livestock shows, 935-3268, Route 5, Fryeburg.



FINE ART & CRAFT
AUGUST 27, 2016
9:30 am to 4:00 pm
Manchester, ME
Longfellow's Greenhouse

Maine Mystery Writers • Children's Book Authors
Light Lunch • Live Music

A suggested \$2 donation at the entrance and profits derived from food sales will benefit the Sexual Assault Crisis and Support Center in Winthrop

designing women

DON'T WAIT UNTIL NEXT SPRING!

Schedule boat top, cover and seat repair work for the OFF SEASON. Some items can be left with us all winter for SPRING DELIVERY!

Repairs & Alterations Welcome!

ATTENTION BOAT OWNERS
Tops, Covers & Interiors for Boats

WATERVILLE UPHOLSTERY & CANVAS
watervilleupholstery.com

1-1/2 Miles West, Exit 127, I-95,
Kennedy Memorial Drive, Oakland • 465-7847

BEDSIDE MANOR
ALZHEIMER'S CARE FACILITY

Providing a quality of care that is second to none

MAKING EVERY DAY SPECIAL

- 24-Hour Alzheimer's and Dementia Care
- Respite Care (based on availability)
- Adult Day Service (based on availability)
- Private, Secure, Non-institutional
- Creative Activities
- Occasional Outings
- Salon Service
- Compassionate Staff

461 Belgrade Road, Oakland, ME 04963
(207) 465-2527

210 Country Club Road, Oakland, ME 04963
(207) 465-8382

Find Us On Facebook

www.bedsidemanorcare.com



—Conservation Too—

Over the years I have often referenced the “LakeSmart” program. It is a voluntary program where shoreline landowners on some lakes have their property evaluated to review its impact on the lake water quality. The intent is to identify properties on the shorefront that exhibit the “LakeSmart gold standard” practices to control erosion and phosphorus runoff, also called “Stormwater Runoff Control.” It is also the case that “LakeSmart” practices also do an excellent job of protecting shoreline habitat. It is a demanding evaluation that sets a very high standard. Everyone who has a “LakeSmart” review, learns about what they can do to minimize their impact on their lake or pond. It’s all about cleaner more healthy water conditions and minimizing how your use of the property might adversely effect the water quality.

Landowners who meet the “LakeSmart” standard receive a “LakeSmart Award” sign which they can place on their property. People cruising by in their boat can see which properties meet those standards. It is hoped that these examples will be copied by others around the shoreline with the goal of improving water quality. This does NOT mean that only “LakeSmart”



practices will protect the lake’s water quality. It is entirely possible that a properly engineered stormwater control system may also minimize stormwater runoff into the lake and intercept runoff. Many of you may have seen an industrial park with manicured lawns, armored sediment ponds, and even underground stormwater runoff holding tanks. These may be very effective. They are usually inconsistent with “LakeSmart” standards. There remains the question of whether these methods also protect shoreline habitat. But that is another issue....

So... during recent weeks I did a few evaluations in the Belgrades. The properties have been very different. All have effectively protected water quality given the way owners use their

The LakeSmart Story - A Buffer Drama

By Dale Finseth

property. But not all have been “LakeSmart.” The “LakeSmart” designation is based upon a set of standards that are heavily reliant upon vegetative buffers. Those vegetative buffers need to be between the lake and the areas of human activity such as recreation areas and the structures. For “LakeSmart” those vegetative buffers are determined as the more effective means to intercept and filter stormwater runoff. As I’ve said earlier, “LakeSmart” methods are not the only effective methods, but they are the methods prioritized by the “LakeSmart” program.

On my return to the office I’ve come to realize that the most important reason why a property protects water quality is the landowner’s attitude. How focused are they on ways to minimize the impact of their land-use on the lake? If the property is referred to me for an evaluation, it nearly always means that the landowner is very interested in behaving in a manner to protect the lake. It is just a question of whether they have chosen methods that meet the “LakeSmart” criteria.

If you are interested in signing up for the “LakeSmart” program, contact Dave Gay, the Belgrade Lakes Association Coordinator at info@BLAMaine.org or call him at 512-5150. If you are in another watershed, contact Logan at the Maine Lakes Resource Center in Belgrade. He can provide a local contact for you.

Remember... It’s all about protecting water quality,

For information about any of our conservation projects please contact Dale Finseth at 622-7847, x 3 or check our website at www.kcswwd.org

Maine Homeless Veterans Benefit Concert

A Special Celebration To

Sunday, September 18

PETER ALLEN
THE OVERLOOKS
DEB MORIN
DEBBIE MYERS
ALLISON AMES BAND
SHIRLEY MYERS
TRAVIS PINKHAM
(last year's contest winner)

Conway Twitty & Loretta Lynn
with Conway's son Michael Twitty

Michael Twitty
additional performers to be announced

DEBBIE MYERS & **productive**
PRODUCTIONS & **graphics**

LAKESIDE ORCHARDS AND FARM MARKET

Visit Us for All Your Local Foods!

APPLES

Fresh Veggies • Bakery •
Milk • Eggs • Beer • Wine & More

Open Daily 9-5

318 Readfield Rd. (Rt. 17), Manchester

207 622 2479

Specializing In

CAMP JACKING AND LEVELING

John Webster
32 Webster Way
Belgrade, ME 04917

Sill Replacement
Retaining Walls

(207) 495-2965
35+ Years Experience

Masonry

Fireplaces • Stonework
Chimneys • Waterproofing
Chimney Inspection
Restoration • Chimney Liner

Alan Berube
213-8815
Sidney, Maine

GENERATORS of MAINE

495-2285

Doug Sawyer, Owner
Cell: 207-215-0617
doug@generatorsofmaine.com
www.generatorsofmaine.com
262 Augusta Road • Belgrade, Maine

KOHLER
Generators
Authorized Dealer

Call Us For Boat Tops, Covers & Interiors

Protect the Interior
Repairs & Alterations
Welcome!

Keep You and Your Boat Clean & Dry

Pontoon Boats Too!

WATERVILLE UPHOLSTERY & CANVAS
(watervilleupholstery@outlook.com)

1 1/2 Miles West Exit 127, I-95, KMD, Oakland

465 - 7847

VISA MasterCard

Bear Spring Camps

- Waterfront cottages
- Home-style meals
- Bass, pike, and brown-trout fishing
- Boats, motors, docks
- Sandy beach
- 3.5 hours from Boston
- May-September

on Great Pond in the
Belgrade Lakes Region
www.bearspringcamps.com
207-397-2341



BELGRADE REGIONAL HEALTH CENTER

*New Patients
of All Ages
Welcome*

4 Clement Way, Belgrade
207-495-3323 | BelgradeCHC.org

ALDEN CAMPS
Est. 1911

- Lobster Bakes on Friday nights by Reservation
- Lakeside Cottages • Boats & Motors
- Full American Plan
- Dining on the Porch by reservation Saturday through Wednesday

3 Alden Camps Cove
Oakland, Me 04963
(207-465-7703)

E-mail: info@aldencamps.com • Website: www.aldencamps.com

CHILDREN'S BOOK CELLAR

BOOKS, PUZZLES, TOYS, GAMES

A store for children of all ages, the young and the young at heart.

Open Monday 12 to 5 • Tues. - Sat. 9 to 5
52 Main St. Waterville 872-4543

DAVID STEVENS
Excavation & Septic Systems

LOAM GRAVEL SAND
465-3815
Cell: 314-0314
P.O. Box 146 • Belgrade, Maine 04917

CASTLE ISLAND CAMPS

Boats, Bait, Tackle, Gas, Kayaks

Boats, Daily or Weekly
495-3312
Rentals for Long Pond Only

David J. Auclair
www.auclaircycle.com

AUCLAIR CYCLE & SKI

64-66 BANGOR ST. AUGUSTA, ME 04330
623-4351 / 800-734-7171 • Fast Professional Service
Bicycles • Skateboards • Roof Racks • Rentals

NEW MAINE TOURMALINE JEWELRY.

L. TARDIF JEWELER
62 Main Street Waterville, Me.

Tues - Sat est. 1935 9 - 5

— Accommodations —

Alden Camps, lakeside cottages on East Pond, established 1911, American Plan meals, boat and motor rentals, dining and lobster bake open to public by reservation, 3 Alden Camps Cove, Oakland, 465-7703, www.aldencamps.com

Bear Spring Camps, waterfront cottages on Great Pond, home-style meals, sandy beach, boats, motors, docks, 60 Jamaica Point Road, Rome, 397-2341, www.bearspringcamps.com

Castle Island Camps, cottages on the water, Long Pond, American Plan meals, boat and kayak rentals, Castle Island Road, Belgrade Lakes, 495-3312, www.castleislandcamps.com

Whisperwood Cottages, overlooking Salmon Lake, American Plan

meals, fishing boat rentals, open to the public for dining by reservation only, 103 Taylor Woods Road, North Belgrade, 465-3983, www.whisperwoodlodge.com

Wings Hill Inn, historic Inn & Restaurant, casually elegant accommodations, centrally located in Belgrade Lakes Village, Route 27, Belgrade Lakes, 495-2400, 866-495-2400, www.wingshillinn.com

Belgrade Vacation Rentals, lakeside camp and cottage rentals throughout the area, long and short stays, many size accommodations and rates, 81 Main Street, downtown Belgrade Lakes, 495-4011, www.belgradevacationrentals.com

Lakeside Cottage Rentals, featuring over 70 private homes, 24/7 customer friendly service, 25 Marina Drive, Belgrade Lakes, 592-5577, 495-4046, www.lcrentals.com



— Notebook —

Watershed Survey Training Workshop

- Learn how to identify, monitor and mitigate ways in which watershed land use influences lake water quality on Friday, September 9, 10 am-3 pm at the Volunteer Lake Monitoring Program Lakes Center, 24 Maple Hill Road, Auburn. Inside discussion, followed by field trip. Bring bag lunch and sturdy walking shoes. Free workshop, space limited. 783-7733

Pancreatic Cancer Research 5K

- On Saturday, September 24 the annual 5K to benefit pancreatic cancer research will take place at Coburn Park in Skowhegan at 10 am with walkers leaving at 10:15 am. All donations go to The Lustgarten Foundation in honor of Brian Michonski and Chuck Robbins, in honor of their wish to raise hope for those diagnosed in the future. Teams and individuals are welcome. Register at <http://2016skowheganwalkrun.kintera.org/> for a free t-shirt; or at the race, no t-shirt. Gift cards and other prizes will be presented after the walkers return to Coburn Park.

Augusta

- The Maine Wood Carvers Association 30th Annual Show and Competition will be held Saturday, September 17. 9 am-4 pm at the Buker Community Center, 22 Armory Street. The show will include wood carving displays and competitions, vendor booths Wood-n-Things gift shop and raffle. Admission is \$4, under 14 years free. Mainewoodcarvers.org

Norridgewock

- Wilder Hill Trails, a system of non-motorized public access trails, is open to interested walkers/hikers/bikers at 137 Oak Hill Road off North Shore Drive. Currently available is a parking area, a sign-up system and 1 1/2 miles of field trails, with a mile of woods trail in development. For information contact wilderhilltrail@gmail.com

Sidney

- Snow Pond Youth Symphony auditions will be Tuesday, August 30, 6:30 pm. The Symphony is for Snow Pond Community Music School, Snow Pond Arts Academy and other serious music students, grades 7-12, who wish to play standard full orchestra repertoire in addition to participating in their local school's music program. Rehearsals will be Tuesdays, 6:30-8:30 pm; concerts are December 6, March 12 and May 2. 621-4166

Skowhegan

- "Our river is flowing. So is the brew." The Skowhegan Craft Brew Festival on Saturday, September 3, 2-7 pm, will feature Maine-crafted libations, farm-to-table fare, and live music in the streets of Skowhegan, as well as guided riverfront walks and tours of Maine Grains and Skowhegan's portion of the Langlais Art Trail. SkowheganCraftBrewFest.com, 612-2571

Waterville

- Important progress is being made in the revitalization of downtown, as Colby College renovates one historic building to accommodate up to 200 new high-tech workers, creates new sites for future development where vacant and damaged buildings now stand, works to ease parking challenges on Main Street's north end and plans to bring high-speed internet to the downtown area. In the last year Colby has purchased five properties downtown and will complete a purchase of land along Main Street for a planned student apartment complex. 859-4000

Wayne

- Cary Memorial Library will host Brian Adams, young adult author of "Love in the Time of Climate Change" on Wednesday, September 7, 6 pm, for a reading from his latest book "KABOOM!" the candidly comical and dynamic story of two teens from West Virginia who become activists when their beloved mountain is threatened by Big Coal. The library is at 17 Winthrop Road, off Route 133. 685-3612





Dining

Augusta

• **Riverfront Barbeque & Grille and Gin Mill Lounge**, world class barbeque, seafood, pasta and vegetarian entrees, full service dining, catering, bulk take out, 300 Water Street, Augusta, www.riverfrontbbq.com, 622-8899

Belgrade

• **Pete's Pig**, 81 Main Street, sandwiches and platters for picnic-style eating on the premises or to go, also offering a full range of catering, Main Street, Belgrade Lakes Village, 495-4095, www.petespig.com

• **Sadie's Boathouse Restaurant at Great Pond Marina**, hearty contemporary American fare, 25 Marina Drive, Belgrade Lakes, 495-4045, 242-1273

• **Spiro & Company**, gourmet Greek food, Main Street, Belgrade Lakes Village, www.spiroandcompany.com, 441-2103

• **The Village Inn and Tavern**, 157 Main Street, Route 27, Belgrade Lakes Village, 495-3553, www.villageinnandtavern.com

• **Whisperwood Lodge and Cottages**, Salmon Lake/McGrath Pond, homestyle cooking, traditional fishing camp diningroom, open to the public by reservation only, 103 Taylor Woods Road, Belgrade, 465-3983, www.whisperwoodlodge.com

• **Wings Hill Inn and Restaurant**, gourmet fine dining in historic inn, daily culinary chef's specialties, Route 27/Main Street, Belgrade Lakes Village, www.wingshillinn.com, 495-2400 or 800-495-2400,

• **Winterberry Farm Café**, homemade treats, pie, cookies, granola bars, grilled organic cheese sandwiches, veggies, drinks, Route 27, Belgrade, 649-3331

Manchester

• **Lakeside Orchards**, bakery, veggies, dairy products, drinks, 318 Readfield Road, Route 17, Manchester, 622-2479

Oakland

• **Alden Camps**, lunch or dinner by reservation Saturday-Wednesday space permitting, lobster bakes on Friday night by reservation, 3 Alden Camps Cove, Oakland, www.aldencamps.com, 465-7703

• **Riverside Farm Restaurant & Wine Market**, simple, wholesome food and drink since 1990, 291 Fairfield Street, Oakland, www.riversidefarmmarket.com, 465-4439

Oakland-Wines & Spirits

• **Tree Spirits**, tasting room for award winning wines and spirits made from local apples, pears and maple syrup, tours available, 152 Fairfield Street, Oakland, www.treespiritsofmaine.com

Smithfield

• **Smithfield Ice Cream Place**, lunch, dinner and dessert, 855 Village Road, smithfieldicecreamplace.com, 368-5039

Designing Women Host 10th Annual Manchester Fine Art and Craft Show Benefiting The Sexual Assault Crisis and Support Center in Winthrop

Designing Women, a non-profit volunteer corporation that celebrates female artisans and works to support other local, non-profit organizations that help women and families, will hold their 10th annual juried fine art and craft show at Longfellow's Greenhouses, located at 81 Puddleduck Road in Manchester, on Saturday, August 27, 2016 from 9:30am through 4:00pm.

Join Designing Women in celebration at Longfellow's Greenhouses with over 20 of Maine's most talented lady artisans, featuring handmade and beautifully crafted pottery, exquisite weaving, stained glass, jewelry, clothing, home decorations and accents, handmade soaps and body care, and much more. Returning again this year will be an "Emerging Female Artisan" tent, which will showcase some of Maine's newest talent. Enjoy live music and peruse Longfellow's end of the season sales. The suggested \$2.00 door donation and all lunch/refreshment proceeds will be collected by

and donated to The Sexual Assault Crisis and Support Center.

For additional information regarding Designing Women's upcoming show, please contact Mary Kay Spencer at The Potter's House at 207-582-7985 or visit Designing Women's website at <http://designingwomen.org>.

ABOUT DESIGNING WOMEN – Designing Women is a nonprofit volunteer corporation established by female artisans from New England in 1991 to bridge art and the community by sponsoring shows that benefit local nonprofit services that support women and families.

ABOUT THE SEXUAL ASSAULT CRISIS AND SUPPORT CENTER – Providing free and confidential services to Kennebec, Somerset, Knox & Waldo counties for over 25 years, The Sexual Assault Crisis and Support Center is a non-profit corporation based in Winthrop, Maine. Services include working to lessen the trauma-related suffering of sexual assault and to promote healing by guiding those affected by sexual violence toward survival through support, advocacy, education and community collaboration. For more information, please visit <http://www.silentnomore.org>.



Jeannie G., LMT

Licensed Massage Therapist

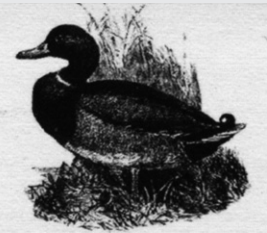
120 Drummond Avenue, Suite 1
Waterville, Maine 04901

Phone: **207-509-1251**

Veteran, Student, Loyalty and Referral Discounts

An essential component of Self-care, massage therapy improves heart rate, blood pressure, circulation and decreases stress levels thereby improving one's well-being. Call for flexible scheduling, Monday through Saturday.

Member AMTA



157 Main Street/RT 27
Belgrade Lakes, Maine 04918

villageinnandtavern@gmail.com

207.495.3553

www.villageinnandtavern.com

THE
VILLAGE INN
AND TAVERN
Belgrade Lakes, Maine
SINCE 1921



Fayette – David Pond – Immaculate custom 4 bedroom/3 bath lake-front Ranch with walkout basement on tranquil and pristine David Pond. Open floor plan with hardwood floors, Anderson windows, Cherry cabinets, granite and stainless kitchen, radiant heat, ductless A/C, security system, 12 kva generator, oversized garage, screen porch, 3.8 acres, 201' frontage. **\$473,000**. Adjoining 3.1 waterfront lot also available for only **\$125,000**.

Call Brian Rizzo at Rizzo Mattson, Realtors
RE/MAX

COLDWELL
BANKER

219 Capitol St., Augusta 622-9000 ~ 215-9793
brizzo@rizzomattson.com

Fishing Boat Rentals on Salmon Lake & McGrath Pond

Located on the South end of Salmon Lake in North Belgrade

Now open to the Public for Dining by reservation only. 465-3983

Breakfast 8:am - 9:am, Dinner served at 5:pm
Daily menu listed on our website
Boat docking available for Lake Residents

www.whisperwoodlodge.com

WINTERBERRYFARMSTAND.COM

Route 27, Belgrade
207.649.3331

HARVEST SEASON
at Winterberry Farm

PUMPKINS, GOURDS, CORNSTALKS, PUMPKIN PIE, APPLE CIDER, APPLE BUTTER, APPLES AND APPLE PIE

Belgrade's working family farm

FARMSTORE & CAFÉ
Open 7 days a week, 9am - 6pm
Featuring all-organic products grown and produced here on the farm.
3 miles south of Belgrade Lakes Village on route 27.

F. A. Rizzo Appraisal Company
Frank Rizzo
Consultant/Appraiser

Estate Appraisal & Planning

Certified Residential cr709
tel. (207) 495-3365
cell (207) 458-4916
farizzo@roadrunner.com

Since 1992

Pete's Pig CATERING & BARBEQUE

Now Booking for 2017

- Corporate Functions
- Weddings & Rehearsals
- Special Events

Call (877) 860-1503
(207) 495-4095

www.petespig.com

Maple Leaf Self Storage
Belgrade Me - 3.3 mi off Rte 27 on Route 135
495-2191

Various size units
Owners live on site

Boat / Auto Storage
By foot or unit

The Ice Cream Place

855 Village Road, Smithfield, ME
Across from the Post Office
362-5039 • Open 11am-9pm
smithfieldicecreamplace.com

Ice Cream

Sub Rolls

Lobster Rolls

Pizza

Accessible by Boat from East Pond



-Business Directory-

ACCOMMODATIONS

See page 18

ART

Colby College Museum of Art, 5600 Mayflower Hill, Waterville, 859-4000, www.colby.edu/museum/

BANKING

Kennebec Savings Bank, 150 State Street, Augusta, 622-5801, www.kennebecsavings.com

Maine State Credit Union, 200 Capitol Street, Augusta, 623-1851, www.mainestatecu.org

Skowhegan Savings Bank, 450 Civic Center Drive, Route 27, Augusta, 1-800-303-9511, 623-2300, www.skowsavings.com

BEVERAGES

Tree Spirits, 152 Fairfield St, Oakland, 861-2723, www.treespiritsofmaine.com

BICYCLES

Auclair Cycle & Ski, 64 Bangor St, Augusta, 623-4351, www.auclaircycle.com

BOAT COVERS

Waterville Upholstery & Canvas, 1042 Kennedy Memorial Dr, Oakland, 465-7847, www.watervilleupholstery.com

BOAT LIFTS

Brown Dock Service, Marina Drive, Route 27, Belgrade Lakes, 495-2600, 316-7514, www.browndockservices.com
Hammond Lumber Company, Auburn, Bangor, Belgrade, Boothbay Harbor, Brunswick, Damariscotta, Fairfield, Farmington, Greenville, Pemaquid, Portland, Skowhegan, Wilton, 1 866-HAMMOND, www.hammondlumber.com

BOAT MOORINGS

Great Pond Marina, 25 Marina Drive, Route 27, Belgrade Lakes, 495-2213, www.greatpondmarina.com

BOAT RENTALS

Belgrade Canoe & Kayak, canoes, kayaks and paddleboards, 1005 Augusta Road, Route 27, Belgrade, 495-2000, www.kayakandcanoe.com

Castle Island Camps, Long Pond, 441 Castle Island Road, Belgrade Lakes, 495-3312, www.castleislandcamps.com

Great Pond Marina, 25 Marina Drive, Route 27, Belgrade Lakes, 495-2213, www.greatpondmarina.com

Whisperwood Cottages, Salmon Lake/McGrath Pond, 103 Taylor Woods Road, Belgrade, 465-3983, www.whisperwoodlodge.com

BOAT SALES AND SERVICES

Clark Marine, 57 Puddledock Road, Manchester, 622-7011, mail@clarkmarine.biz, funonthewaterstartshere.com

Hamlin's Marine, 290 West River Road, Waterville, 872-5660, www.hamlinsmarine.com

Mid-Maine Marine and RV, 885 Kennedy Memorial

Drive, Oakland, 465-2146, www.midmainemarine.com

BOAT STORAGE

Belgrade Boat Storage, 31 Pinkham's Cove Road, Belgrade, 495-3421, 314-3287, www.belgradeboatstorage.com

Belgrade Lakes Marine and Storage, Inc, 366 Augusta Road, Belgrade, 495-2378, www.belgradelakesmarine.com

Clark Marine, 57 Puddledock Road, Manchester, 622-7011; and Route 202, Monmouth, mail@clarkmarine.biz, funonthewaterstartshere.com

Hamlin's Marine, 290 West River Road, Waterville, 872-5660, www.hamlinsmarine.com

Maple Leaf Self Storage, 688 Manchester Road, Route 135, Belgrade, 495-2191, 441-5529

Mid-Maine Marine, 885 Kennedy Memorial Drive, Oakland, 465-2146, www.midmainemarine.com

BOOKS

Children's Book Cellar, 52 Main Street, Waterville, 872-4543, childrensbookcellar.com

BUILDERS

Craig's Carpentry/North Bay Estates, Route 8, North Belgrade, Craig Alexander, 649-3749

G&L Contracting, 116 Lakeshore Drive, Belgrade Lakes, 215-7951, 495-2325, 233-7408, gandlcontractingmaine.com

LakeHouse Design, Build, Renovations, 17 Birchwood Road, Augusta, 242-3663, www.lakehousedesignbuild.com

John Webster, jacking, raising, 32 Webster Way, Belgrade, 495-2965

BUILDING MATERIALS

Hammond Lumber Company, Auburn, Bangor, Belgrade, Boothbay Harbor, Brunswick, Damariscotta, Fairfield, Farmington, Greenville, Pemaquid, Portland, Skowhegan, Wilton, 866-HAMMOND, www.hammondlumber.com

COMPUTER CONSULTANTS

Macintosh Solutions, Michael Breault, 24 Welch Road, Wilton, 645-5083, cell 578-0226, www.michaelbreault.net

DEMENTIA/ALZHEIMER'S CARE

Bedsid Manor, Alzheimer's Care Facility, 461 Belgrade Road and 210 Country Club Road, Oakland, 465-2527, 465-8382, www.bedsidemanorcare.com

DINING

See Directory on page 15

DOCKS

Brown's Dock Services at Great Pond Marina, 495-2600, 316-7514, www.browndockservices.com

G&L Contracting, 116 Lakeshore Drive, Belgrade Lakes, 495-2325, 215-7951, 233-7408, gandlcontractingmaine.com

Hammond Lumber Company, Auburn, Bangor, Belgrade, Boothbay Harbor, Brunswick, Damariscotta, Fairfield, Farmington, Greenville, Pemaquid, Portland, Skowhegan, Wilton, 866-HAMMOND, www.hammondlumber.com

ELDER CARE

Maine-ly Elder Care, 28 Center Street, Oakland, 465-3249, www.maine-lyeldercare.com

ENGINEERING

Thayer Engineering, septic design, storm water mitigation, permitting, 17 Hasson Street, Farmingdale, 582-7762, www.thayereng.com

ESTATE APPRAISALS

F.A. Rizzo Appraisal Company, estate appraisal and planning for real estate, 495-3365, 458-4916, farizzo@roadrunner.com

EXCAVATING

Belgrade Boat Storage, 31 Pinkham's Cove Road, Belgrade, 495-3421, 314-3287, belgradeboatrentals.com
David Stevens, P0 Box 146, Belgrade, 465-3815, cell 314-0314

EYE CARE

Eye Care of Maine, 325 E. Kennedy Memorial Drive, Waterville, 873-2731, 1-800-660-3403, www.Maine2020.com

FARMSTANDS

Lakeside Orchards, 318 Readfield Road, Route 17, Manchester, 622-2479

Winterberry Farm, 538 Augusta Road, Route 27, Belgrade, 495-2593, 649-3331, www.winterberryfarmstand.com

FINANCIAL PLANNING

Golden Pond Wealth Management, 129 Silver Street, Waterville, 873-2200, www.goldenpondwealth.com

FIREWOOD

J & M Logging, Inc. 853 Civic Center Drive, Augusta, 622-6353, www.jmlogginginc.com

FLOORING

Hammond Lumber Company, Auburn, Bangor, Belgrade, Boothbay, Brunswick, Damariscotta, Fairfield, Farmington, Greenville, Pemaquid, Portland, Skowhegan, Wilton, 866-HAMMOND, www.hammondlumber.com

GENERATORS

Generators of Maine, 262 Augusta Road, Belgrade, 495-2285, www.generatorsofmaine.com

GOLF

Natanis Golf Course, 735 Webber Pond Road, Vassalboro, 622-3561, www.natanisgc.com

HEALTH CENTERS

Belgrade Regional Health Center, 4 Clement Way, Belgrade Lakes, 495-3323, www.healthreachchc.org, belgradechc.org

Inland Hospital, 200 Kennedy Memorial Drive, Waterville, 861-3000, 1-800-491-8600, www.inlandhospital.org

MaineGeneral Medical Center, Alfond Center for Health, 35 Medical Center Parkway, Augusta; Thayer Center for



Health, 149 North Street, Waterville,
1-855-4463, www.mainegeneral.org

HOME HEALTH CARE

Assistance Plus, 1-800-781-0070 ext. 400,
www.assistanceplus.com

ICE CREAM

Smithfield Ice Cream Place, 855 Village Road,
smithfieldicecreamplace.com, 368-5039

JEWELRY

Larsen’s Jewelers, 57 Main Street, Waterville, 872-6301, 1-800-697-1874, www.larsensjewelers.com
L.Tardif Jeweler, 62 Main Street, Waterville, 872-7542, 1-800-834-3638, ltardiffjewelers.com

KITCHENS

Hammond Lumber Company, Auburn, Bangor, Belgrade, Boothbay, Brunswick, Damariscotta, Fairfield, Farmington, Greenville, Pemaquid, Portland, Skowhegan, Wilton, 866-HAMMOND,
www.hammondlumber.com

LAKE ASSOCIATIONS

Belgrade Lakes Association (BLA), Long Pond and Great Pond, PO Box 551, 137 Main Street, Belgrade Lakes, 512-5150, belgradelakesassociation.org

LANDSCAPING

G&L Contracting, Belgrade Lakes, 215-7951, 495-2325, 233-7408, gandlcontractingmaine.com
Lynch Landscaping, Skowhegan, 474-2420, lynchlandscaping.com

MASONRY

Alan Berube, Sidney, 213-8815

MASSAGE THERAPIST

Jeannie G., 120 Drummond Avenue, Suite 1, Waterville, 509-1251

MOVIE THEATERS

Railroad Square Cinema, call for titles and times, 17 Railroad Square, Waterville, 873-6526,
www.railroadsquarecinema.com

MUSEUMS

Colby College Museum of Art, 5600 Mayflower Hill, Waterville, 859-5600, www.colby.edu/museum/

MUSIC/CONCERTS

Snow Pond Center For The Arts and New England Music Camp, 8 Goldenrod Lane, Sidney, 844-476-6976, www.snowpond.org

ORCHARDS

Lakeside Orchards and Farm Market, 318 Readfield Road, Route 17, Manchester, 622-2479

PHYSICAL THERAPY

Dockside Physical Therapy, 47 Main Street, Belgrade

Lakes, 495-3195, 512-2544, Fax 512-2545

PIANO ENJOYMENT

Diane Gorman, 906 Manchester Road, Belgrade, 495-3222

PLUMBING

Paul Hanna's Plumbing, Belgrade, 495-3805

REAL ESTATE DEVELOPMENTS

North Bay Estates, Belgrade, 649-3749, crgsnbe@yahoo.com

REAL ESTATE

Better Homes and Gardens, The Masiello Group, 207-215-7349, Les@LesPriest.com
Coldwell Banker Rizzo Mattson, 219 Capitol Street, Augusta, 622-9000, www.rizzomattson.com
Day's Real Estate, 262 Augusta Road, Route 27, Belgrade Lakes, 495-3111, 1-888-495-3111, www.daysrealestate.com
Lakepoint Real Estate, 221 Main Street, Belgrade Lakes, 495-3700, www.belgradelakepoint.com
Sprague & Curtis Real Estate, 75 Western Avenue, Augusta, 623-1123, www.spragueandcurtis.com

LODGING RESERVATIONS

See page 14

RESTAURANTS

See Dining Directory on page 15

RETIREMENT COMMUNITIES

Granite Hill Estates, 60 Balsam Drive, Hallowell, 626-7786, 1-888-321-1119, www.granitehillestates.com

SAILING

Crooked Island Sailing, lessons, rentals, deliveries, Peter McManus, Belgrade Lakes, 495-9066,

SCHOOLS

St. Michael School, grades pre-K 3-year-old through 8th, 56 Sewell Street, Augusta, 623-3491, www.smsmaine.org
Snow Pond Arts Academy, 8 Goldenrod Lane, Sidney, 844-476-6976, www.snowpond.org

SECURITY SYSTEMS

Cayer Security Services, Inc, 208 College Avenue, Waterville, 453-9177, www.cayersecurity.com

SELF STORAGE

Maple Leaf Self Storage, 688 Manchester Road., Route 135, Belgrade, 495-2191

SURVEYING

Acme Land Surveying, 108 Fairbanks Road, Suite 5, Farmington, 778-4081, www.acmelandsurveying.com

WINDOWS

Hammond Lumber Company. Auburn, Bangor, Belgrade, Boothbay, Brunswick, Damariscotta, Fairfield, Farmington, Greenville, Pemaquid, Portland, Skowhegan, Wilton, 1-866-HAMMOND, www.hammondlumber.com

ASSOCIATIONS/GROUPS

THE BELGRADES...

- East Pond Association, Smithfield/Oakland, www.eastpond.org
- North Pond Association, Smithfield/Rome/Mercer, www.northpond.net
- McGrath Pond/Salmon Lake Association (MPSL), Belgrade/Oakland, P.O. Box 576, Oakland, 04963, 873-5285, www.mcgrathpond-salmonlake.org
- Belgrade Lakes Association (BLA) for Great Pond and Long Pond, Belgrade/Rome/Mount Vernon, PO Box 551, 137 Main Street, Belgrade Lakes, 04918, 512-5150, www.belgradelakesassociation.org
- Friends of Messalonskee, Oakland/Belgrade/Sidney, PO Box 532, Oakland, 04963, 465-4622, www.friendsofmessalonskee.com
- Belgrade Regional Conservation Alliance and BRCA Conservation Corps, PO Box 250, 137 Main Street, Belgrade Lakes, 04918, 495-6039, www.belgradelakes.org
- Belgrade Lakes Region Business Group (BLRBG), PO Box 596, Belgrade Lakes, 04918, 495-3700, www.belgradelakesmaine.com
- Maine Lakes Resource Center/Docks to Doorways, PO Box 431, 137 Main Street, Belgrade Lakes, 04918, 495-3617, 620-6029, www.mainelakesresourcecenter.org

BEYOND...

- Friends of the Cobbossee Watershed, PO Box 5003, Augusta, 04332-5003, 621-4100, www.watershed-friends.com
- Franklin County Soil & Water Conservation District, 107 Park Street, Farmington 04938, 778-4279, www.franklincswcd.org
- Kennebec County Soil & Water Conservation District, 21 Enterprise Drive, Augusta 04330, 622-7847, ext. 3, www.kcswcd.org
- Somerset County Soil & Water Conservation District, 12 High Street, Skowhegan 04976, 474-8324, www.somersetswcd.org
- Kennebec Land Trust (KLT), PO Box 261, 331 Main Street, Winthrop, 04364, 377-2848, www.tkl.org
- Kennebec Messalonskee Trails, PO Box 2388, Waterville, 04903, 873-6443, www.kmtrails.org
- Kennebec River Rail Trail, PO Box 2195, Augusta, 04338, 623-8162, www.krrt.org
- 30 Mile River Watershed Association (30 MRWA), Kimball Pond in Vienna to the Androscoggin River, PO Box 132, Mt Vernon, 04352, 685-4956, www.30mileriver.org
- Maine Lakes Society, formerly Congress of Lake Associations, PO Box 447, 137 Main Street, Belgrade Lakes, 04918, 1-855-463-2652
- Central Maine chapter of the New England Mountain Bike Association (CeMeNEMBA), 441-6227, www.cemenemba.org





Maslak and Witkin Leave Lasting Legacy


The Belgrade Lakes Association recently recognized Maureen Maslak and Bill Witkin for their many years of service as members of the BLA Board of Directors. Maureen and Bill received a standing ovation and the heart felt thanks of the large crowd at the July 31st BLA Member Reception and Annual Meeting.

Maureen became the BLA secretary shortly after joining the board in 1995. In that capacity she helped undertake the herculean job of compiling a list of Great Pond and Long Pond shorefront property owners. Thanks to her “door to door” and “dock to dock” efforts on both lakes, membership in the BLA more than doubled.

When the threat of invasive aquatic plants came along, Maureen was quick to recognize the danger to our lakes and take action. She helped start the Courtesy Boat Inspection Program and supervised it so well that our program led the state in the number of yearly inspections.

Bill Witkin joined the BLA board way back in the 1980s at the invitation of Eddie Mayer, surely becoming our longest-serving board member. In all those years, Bill always brought his positive outlook, sage advice and great wisdom to the board.

Bill's dedication to the BLA and our lake community was evident in his year round attendance at our meetings, traveling to Belgrade every month with his wife, Joan, from their home in Chappaqua, New York. Bill recently recalled driving all the way up in a snowstorm, finally arriving in Belgrade, only to discover the BLA meeting had been cancelled due to weather. Bill and Joan are also strong supporters of the BLA programs, like the STOP MILFOIL Capital Campaign.

Thank you Maureen and Bill for your many years of distinguished service and your lasting contributions to the BLA and this community. Your love of our lakes and work for their betterment is testimony to why you are so loved and admired. You are an inspiration to us all. 



BLA Draws Raffle Winners

Fourteen tickets were pulled and the winning names announced at the Belgrade Lakes Association Annual Raffle drawing on Sunday, August 7th. While these lucky winners will receive some wonderful prizes, everyone who purchased a ticket is really a winner, as every dollar of the record \$34,194 collected from ticket sales this year goes to protecting and improving our lakes.

Here are the 2016 BLA Raffle prize winners:

PRIZE	WINNER	HOME TOWN
1. Scout Boat, Motor and Trailer, donated by Hamlin's Marine	Paul Cloutier	Belgrade Lakes, ME
2. Shoremaster Boat Lift, donated by Hammond Lumber	Paul Hanna	Belgrade, ME
3. Shoremaster Dock Sections, donated by Hammond Lumber	Meg Loubier	Winslow, ME
4. 7 HP Elco Electric Motor, donated by Brightside Wooden Boat Services	Laurie & Chris Raleigh – Donating prize back to BLA	New Canaan, CT
5. 5 HP Elco Electric Motor, donated by Brightside Wooden Boat Services	George Morton	Somers, CT
6. Big Green Egg Cooker, donated by Somerset Stone & Stove	Matt Byrd	South Berwick, ME
7. Free Snake Point Great Pond Camp Rental, donated by Anne & Steve Smith	Kurt Furbush	Belgrade Lakes, ME
8. Free Tearmann Loch Great Pond Camp Rental, donated by Lynn & John Gibbs	Robert Johnson	Belgrade, ME
9. Adirondack Chair,	Scott Whiteside	Lincoln University,



The 2016 BLA Raffle tickets were pulled during the Farmer's Market at the Maine Lakes Resource Center on August 7th. Congratulations to our winners and many thanks to our sponsors and everyone who purchased tickets. Photo courtesy of Dr. Alex Wall.

donated by Stephanie & Adam Gardner		PA
10. Adirondack Chair, donated by Phyllis & Lynn Matson	Mary Lachapelle	Seattle, WA
11. Day's Famous Picnic Basket, donated by Diane & Kerry Oliver	Arthur Hartwig	Belgrade Lakes, ME
12. Four Rounds of Golf at Belgrade Lakes Golf Club, donated by Gail & Frank Rizzo	Richard Smith	Belgrade Lakes, ME

Continued on page 20

Continued on page 19....

Sprague & Curtis

Real Estate

spragueandcurtis.com

6 2 3 . 1 1 2 3

75 Western Ave. • Augusta, ME

MAINE

MLS

Equal Housing



AUGUSTA-LAND — Incredible views from these 3 build-able lots being sold as one! Overlooks Augusta's West side with beautiful sunset views. Very desirable neighborhood and close to everything. Protective covenants to protect your investment. **PRICED TO SELL! #1277889 \$129,000**



WINTHROP-WATERFRONT — Country Farmhouse overlooking Berry Pond. Also your own waterfrontage on the pond. Very spacious with 4BR, 2.5B. Lots of rooms with hardwood floors. Several outbuildings including a large barn. Lots of potential and priced way below assessed value! **#1278107 \$142,800**



MONMOUTH — Antique Cape in a Village/neighborhood setting. Potential but lots of work required including foundation work. Offers 3 bedrooms. **#1278290 \$14,900**



CHELSEA-MULTI FAMILY — Spacious 2BR apartments in this one level building. Easy commute to Augusta or Gardiner areas. Level, open lot. Attic storage. Each unit has their own heating system and stove and refrigerator. Ideal as owner occupied or as an investment property. **#1278354 \$150,000**



WATERVILLE — In town Waterville house that had a fire in 2015. Repair and remodel or tear down and use the lot. Detached 2 car garage was not affected. House had 3 bedrooms. Total rehab but price reflects the work needed! **#1278469 \$12,500**



READFIELD — Beautiful 3-4 bedroom Readfield home with shared Maranacook Lake access/beach. Nice layout, living room with fireplace, formal dining room, some hardwood floors, 1st floor den/office, lovely breezeway family room with skylights and glass doors to back deck, 2 car with overhead storage, more. Spacious yard, lovely area, nice neighborhood, good schools. Lots to offer, a wonderful home. **#1219174 \$229,000**



SIDNEY — Quiet and peaceful Ward Pond—just minutes from I-95, MaineGeneral Hospital and the Civic Center/Marketplace. Pleasant 3BR, 1.5 bath, Gambrel style home on a pretty 2 acre lot w/200 feet of waterfront. Moderately private setting. Open DR/LR w/gorgeous stone fireplace. Front screened porch. 24x26 barn garage w/full second floor, 12x20 open shed. Full basement. Mostly wooded, quiet setting, nice frontage with a gentle incline into the water. **#1275808 \$249,000**



AUGUSTA-VERY ELEGANT AND WELL KEPT YEAR ROUND WATERFRONT HOME! - Private location, pretty kitchen w/granite counter tops, 1st level master bedroom w/bath & Jacuzzi tub, cathedral ceilings in LR, nice hardwood floors, loft/office, screened deck w/water views, new roof and 24x24 garage, walkout basement, propane generator, paved driveway, well landscaped, 100 feet water frontage, easy access to water, more. A PRIVATE PARADISE! **#1268128 \$249,900**



READFIELD — Like new, 4BR, 2BA Colonial w/private setting on Torsey Pond. Complete privacy! You see nothing but the waterfront! Year round home with wood-stove in the LR, HW floors, beautiful knotty pine sun room overlooking the water, deck, 1 car garage and dock. **PRICED TO SELL! #1269200 \$249,900**



Announcing the 14th Season of “Concerts at Jewett”

The University of Maine at Augusta College of Arts and Sciences and UMA Senior College announce the 2016-2017 concert schedule for the 14th season of “Concerts at Jewett” held at Jewett Hall Auditorium. Tickets are \$10, students and ages 13-18, \$5, and children 12 and under free. Tickets are available at Pat’s Pizza of Augusta, Dave’s Appliance in Winthrop and at the door. Subscriptions (7 or more concerts) at reduced rates are available by mail. Be a PATRON – contribute \$100 or more to the Community Presentations Fund and attend all concerts free. For further information call 621-3551, email umasc@maine.edu, or visit concertsatjewett.com.

The series, sponsored by local businesses and private contributions, features talented Maine performers representing a variety of musical forms. Profits will be used to subsidize present and future lectures and concerts to benefit the community.

The following artists will perform:

Sunday, October 16, 2016, 2PM – Fiddle-icious. A multi-generational orchestra from across Maine, preserving the cultural heritage of Maine, French and Canadian fiddle music and step-dancing; directed by legendary Don Roy. At Cony High School, 60 Pierce Drive, Augusta.

Sunday, November 6, 2016, 2PM – (snow date Nov.20) – Don Campbell

...continued from page 18

- | | | |
|---|--------------------------|----------------|
| 13. Dinner for Four at the Village Inn, donated by the Village Inn & Tavern | Linda & Jeff Alder/Kurtz | Washington, DC |
| 14. 10' Stand Up Paddle Board, donated by Lakepoint Real Estate | Mark Jablonowski | Washington, DC |

The Belgrade Lakes Association wishes to thank everyone who purchased raffle tickets this year, our very generous sponsors, all our volunteers who sold tickets, and our BLA Raffle Master, Dick Greenan. Thank you all ... and good luck next year.

Honors American Veterans. Don and his band join UMA/UMASC in honoring Veterans of all ages and branches of the military. Vets admitted free. Invite an American hero to join you for this very special concert.

Sunday, December 18, 2016, 2PM – A Christmas Concert with Downeast Brass and Jay Zoller, organist. This annual concert features a stellar brass quintet, an outstanding organist and a restored 1866 E.&G.G. Hook organ. At South Parish Congregational Church, 9 Church St., Augusta.

Sunday, January 8, 2017, 2PM – (snow date Jan.15) – Dave Rowe and The Squid Jiggers return to Jewett at our audience’s request. Dave presents his reflective originals and, when paired with Troy Bennett, great vocal and instrumental harmonies on robust Maine and Maritime songs.

Sunday, February 12, 2017, 2PM – (snow date Feb. 19) – The Plaid Dragonflies. Enthusiastically recommended by Senior College students, Tess Zardus and Val Bennett will present a medley of popular songs from the 40’s through today.

Sunday, March 5, 2017, 2PM - (no snow date) – Choro Louco, a Brazilian Choro band from Portland will present the unique rhythms and intricate harmonies of Brazil’s Choro music.

Sunday, April 9, 2017, 2PM – Sarah Geller, a young Farmington native who performs in NYC, will share her outstanding violin skills. “Ms. Geller’s talents shine through to audiences who thrill at her abundant musicality and probing interpretations.” Michael Shapiro, Music Dir. and Conductor, The Chappaqua Orchestra (NY).

Sunday, May 7, 2017, 2PM – Masanobu Ikemiya, a highly acclaimed concert pianist, peace activist and environmental steward. He is also a Concerts @ Jewett favorite, featuring intricate pieces by master composers, light-hearted ragtime rhythms and videos of places and projects that inspire him.

All concerts, except for Oct. 16th and Dec. 18th are at UMA Jewett Auditorium. Call 621-3551 for information and/or tickets. Website: www.concertsatjewett.com.

Media contact: Irene Forster – 445-5227 – iforster@fairpoint.net

...continued from page 5

to spawn. I like to go out early in the morning or in the evening on calm days when these schools are easy to find. Casting a fly or other lure (e.g., a small floating Rapala) that looks like an alewife into the school is an exciting way to quickly catch a lot of fish.

The water is still warm and I’m seeing lots of people out swimming and otherwise recreating on the water. My neighbors, the Orups, from Sudbury, MA and Peninsula Drive in Rome recently had a big family get together and kids were getting in some practice on the 3-meter diving platform in preparation for the 2020 Olympics. If the Olympics have inspired you to do a bit of running, please sign up for BRCA’s ninth annual “Run for the Lakes” 5K race on Saturday September 3rd. Call 495-6039 for more info and to register.

It is hard to believe that this is the final issue of “Summertime in the Belgrades” for this year. I hope this column has inspired some of you to get out and explore the outdoor recreation opportunities the region has to offer and I hope you took a kid or two along. Until next year I encourage everyone to “Take it Outside.”




THE SNOW POND YOUTH SYMPHONY
Conductor Jinwook Park
Now Auditioning!

Snow Pond invites all serious music students of orchestral instruments in grades 7-12 to audition for the Snow Pond Youth Symphony
AUDITIONS:
Tuesday August 30 from 6:30 pm
Additional days to be scheduled


CONTACT: To schedule audition and for any questions and more information, contact **Betsy Kobayashi**
pinelandsuzuki@gmail.com **207-621-4166**

8 Goldenrod Lane, Sidney ME 04330 • 844-476-6976



“The Golden Age is before us, not behind us”
...William Shakespeare

Whether you are 55 or 85 our mission is the same...
grow and protect your family’s treasure for your
‘Golden Age’



129 Silver St, Waterville, ME
Phone: (207) 873-2200
www.goldenpondwealth.com

Securities offered through LPL Financial, Member FINRA/SIPC



Your own little island of

FUN

**LARGEST
SHOREMASTER
DISTRIBUTOR
in the
COUNTRY**

Improve your lake shore living experience with a **SHOREMASTER SWIM RAFT**. Kids and adults alike will enjoy years of fun and treasured memories.

We Cover The Waterfront.

SHOREMASTER

SWIM RAFTS

90" x 114" Poly Swim Raft – Poly Deck - Yellow or Gray	\$1,129
8'x8' Aluminum Swim Raft Cedar Deck	\$1,589
8'x8' Aluminum Swim Raft Aluminum Deck	\$2,029
8'x8' Aluminum Swim Raft White Aluminum	\$2,099
Rip Raft – Tan or Orange	\$849

Ladder sold separately

3 step pivot ladder	\$269
4 step pivot ladder	\$329
5 step pivot ladder	\$369
Nylon Rope Ladder (Rip Raft only)	\$57
2 step Rip Raft Ladder	\$215

Toll-free 1-866-HAMMOND

Hammond Lumber Company

Visit us online at www.hammond-shoremaster.com for a 82-page Product Planning Guide & Price List.

AUBURN • BANGOR • BELGRADE • BOOTHBAY HARBOR • BRUNSWICK • DAMARISCOTTA
FAIRFIELD • FARMINGTON • GREENVILLE • PEMAQUID • PORTLAND • SKOWHEGAN • WILTON

Lakepoint

REAL ESTATE

207.495.3700

221 Main St.,
Belgrade Lakes, ME 04918

www.belgradelakepoint.com



MESSALONSKEE LAKE, OAKLAND: 12 room year round Contemporary on 100' lakefront. 4BR, 3BA, Master Suite with porch overlooking the lake. #1270669 **\$549,900**



GREAT POND, BELGRADE: 3BR + loft, 2BA. Lots of space. Year round, 50' +/- on Long Pond. Each level has full kitchens. Dock included. #1258328 **\$259,900**



DAVID POND, FAYETTE: 193' owned lakefront. 225' additional in common. 1.2 acre year-round building lot in Lake View Estates. #1275392 **\$135,000**



LITTLE NORTH POND, ROME: Open floor-plan with lots of windows, stone hearth, 2 full baths, 1ge master BR, home comes furnished. #1269882 **\$269,900**



GREAT POND, ROME: 221' lakefront. Cottage just feet away from sandy lakefront. Attached guest quarters. Boat House. Amazing Space #1241846 **\$595,000**



NORRIDGEWOCK: 4BR/2BA 1867 Victorian on the National Registry. Marble mantles, attached barn, updated electrical, large level lot. #1278523 **\$189,000**



SALMON LAKE, BELGRADE: Duplex with 382' +/- on Salmon Lake. Total 4 BR, 2 full BA, 2 half BA. 2 car garage. 4.56 Acres of open fields. #1255952 **\$285,000**



GREAT POND, ROME: Cottage, guest cottage, two boat houses, wrap around porch, sunsets, swimming area 12 acres, 299' waterfront. #1057136 **\$769,000**



GREAT POND, BELGRADE: Two cottages, one on the water. 4BR/2BA, custom kitchen, LR, deck. 150' frontage. #1210659 **\$349,000**

GRANITE HILL ESTATES

MARTHA BALLARD
ASSISTED LIVING

Part of:
MaineGeneral Health

Retire your way. Today!

In a community that cares.

Now's the time to join the family at **Granite Hill Estates**, central Maine's premiere continuing care retirement community and part of **MaineGeneral Health**. Call 207-626-7786 or toll free 1-888-321-1119 today to schedule a tour. Offering an impressive menu of amenities:

- Spacious cottage homes and apartments
- Elegant full-service dining plan
- Maintenance and housekeeping services
- Scheduled courtesy transportation
- Social, cultural and educational programs
- Indoor pool complete with hot tub
- Cozy reading room, library and bank
- Attractive game, billiard, and meeting rooms
- Fitness center with an on-site fitness coordinator
- Convenient hair salon, massage spa and meditation room
- Wooded walking trails throughout our 135 acre campus

Awarded
Highest Honors
for
Resident
Satisfaction

Holleran National
Senior Living Survey



email: info@granitehillestates.com

60 Balsam Drive, Hallowell, ME 04347

207-626-7786

1-888-321-1119

granitehillestates.com



in a GREAT PLACE



For 146 years we have helped make Kennebec County a great place to work, live and play.



Kennebec Savings Bank

Where banking is easy.

Augusta | Waterville | Farmingdale | Winthrop

www.kennebecsavings.com

