

11-2011

History of Annual Municipal Revenue Sharing: Municipal Revenue Sharing, Monthly Distributions, FY 95-12

Timothy Rodriguez
Office of the Maine State Treasurer

Follow this and additional works at: http://digitalmaine.com/treas_docs

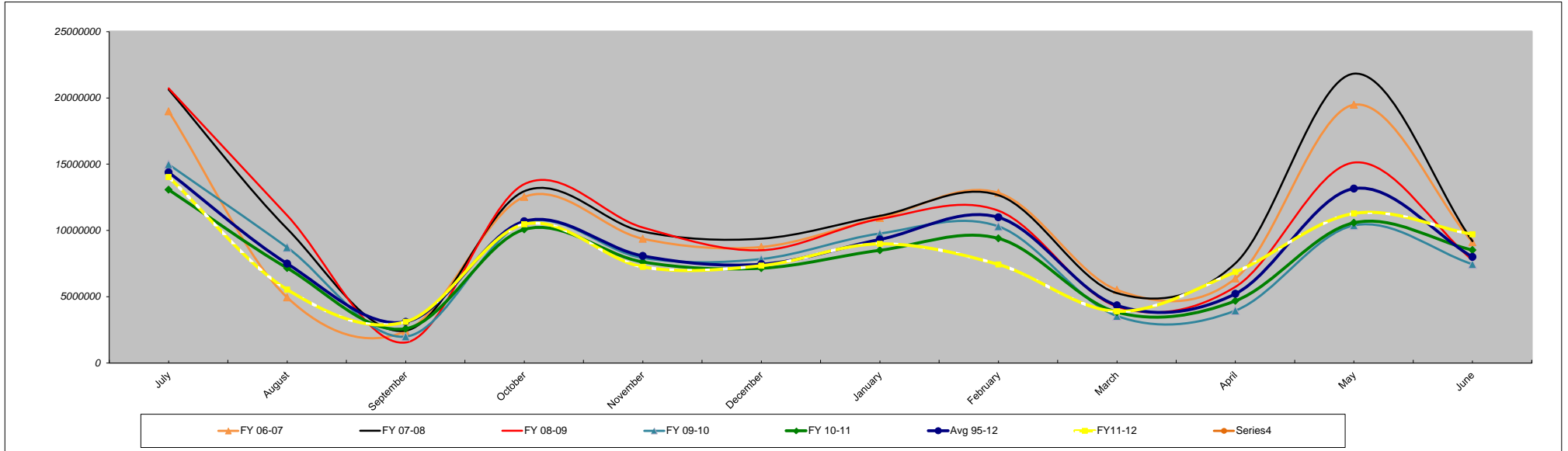
Recommended Citation

Rodriguez, Timothy, "History of Annual Municipal Revenue Sharing: Municipal Revenue Sharing, Monthly Distributions, FY 95-12" (2011). *Treasurer's Documents*. Paper 1.
http://digitalmaine.com/treas_docs/1

This Text is brought to you for free and open access by the State Documents at Maine State Documents. It has been accepted for inclusion in Treasurer's Documents by an authorized administrator of Maine State Documents. For more information, please contact statedocs@maine.gov.

**Municipal Revenue Sharing
Monthly Distributions
FY 95-12**

<u>Mo. of Collection*</u>	<u>July</u>	<u>August</u>	<u>September</u>	<u>October</u>	<u>November</u>	<u>December</u>	<u>January</u>	<u>February</u>	<u>March</u>	<u>April</u>	<u>May</u>	<u>June</u>	<u>Total</u>
FY 11-12	14,024,436.01	5,536,482.31	3,102,848.60	10,465,800.93	7,247,645.14	7,336,602.86	8,985,571.20	7,430,241.89	3,897,011.94	6,863,387.92	11,278,488.00	9,707,190.07	95,875,706.87
Revl	11,640,281.89	5,425,280.32	2,575,363.60	8,686,600.04	6,015,503.29	6,089,362.95	7,458,000.15	6,167,099.93	3,234,499.97	5,696,599.97	9,361,100.06	5,566,930.02	77,916,622.19
RevlI	2,384,154.12	111,201.99	527,485.00	1,779,200.89	1,232,141.85	1,247,239.91	1,527,571.05	1,263,141.96	662,511.97	1,166,787.95	1,917,387.94	4,140,260.05	17,959,084.68
FY 10-11	13,069,627.90	7,159,374.98	2,585,499.85	10,073,899.98	7,619,570.00	7,145,799.98	8,498,418.08	9,397,188.72	3,828,848.15	4,684,195.89	10,575,977.39	8,516,069.10	93,154,470.02
Revl	11,109,099.88	6,013,999.96	2,171,699.89	8,462,000.01	6,400,370.02	5,871,800.00	7,138,558.05	7,893,612.75	3,216,209.60	3,934,724.55	8,883,821.01	5,053,498.04	76,149,393.76
RevlI	1,960,528.02	1,145,375.02	413,799.96	1,611,899.97	1,219,199.98	1,273,999.98	1,359,860.03	1,503,575.97	612,638.55	749,471.34	1,692,156.38	3,462,571.06	17,005,076.26
FY 09-10	14,978,871.03	8,714,933.40	1,988,253.97	10,585,897.83	7,922,092.00	7,841,803.91	9,763,570.05	10,302,994.03	3,542,326.99	3,949,371.06	10,378,894.88	7,446,098.09	97,415,107.24
Revl	12,732,000.07	7,407,653.32	1,689,999.98	8,997,999.90	6,733,793.00	6,664,299.93	8,298,999.99	8,757,500.02	3,011,000.00	3,357,000.00	8,821,999.96	4,629,100.02	81,101,346.19
RevlI	2,246,870.96	1,307,280.08	298,253.99	1,587,897.93	1,188,299.00	1,177,503.98	1,464,570.06	1,545,494.01	531,326.99	592,371.06	1,556,894.92	2,816,998.07	16,313,761.05
FY 08-09	20,720,263.78	11,128,399.99	1,544,000.08	13,492,900.02	10,218,099.87	8,503,222.36	10,860,099.91	11,488,499.93	4,256,999.97	5,743,660.70	15,121,999.91	7,758,287.89	120,836,434.41
Revl	-	11,128,399.99	1,544,000.08	13,492,900.02	10,218,099.87	8,503,222.36	10,860,099.91	11,488,499.93	4,256,999.97	5,743,660.70	15,121,999.91	7,758,287.89	100,116,170.63
RevlI	20,720,263.78	-	-	-	-	-	-	-	-	-	-	-	20,720,263.78
Total FY 95-07	175,528,855.01	92,183,999.77	44,106,700.09	134,594,500.23	101,595,699.74	93,668,438.66	118,161,100.35	142,946,599.68	56,899,300.02	66,810,499.84	165,727,500.28	103,060,262.32	1,295,283,455.99
Avg 95-12	14,385,957.09	7,491,549.47	3,097,825.33	10,688,464.60	8,074,533.04	7,443,321.47	9,316,516.97	10,987,828.90	4,340,969.12	5,218,225.15	13,154,863.08	7,998,136.51	102,334,460.63
Qtrly Average			24,975,331.89			26,206,319.11			24,645,314.99			26,371,224.75	102,198,190.73
% of total	14.058%	7.321%	3.027%	10.445%	7.890%	7.274%	9.104%	10.737%	4.242%	5.099%	12.855%	7.816%	100%
Qtrly % of total			24%			26%			24%			26%	100%



* Distribution of collected revenues to municipalities occurs during the following month on or before the 20th per Statute.