

Summertime in the Belgrades



... Serving the Central Maine Lakes & Kennebec River Corridor

— A Cider Mill Press Publication —

VOLUME 18, NUMBER 11

The World of Names in Maine

by Esther J. Perne

Maine is in France, right? It was a hereditary countship in the 10th century. But who thinks of that. Maine is here and it's a great place to be. So, what are some other location names and what do they bring to mind?

Take Belgrade, for starters. Like its ancestor on the Balkan Peninsula, it has watery surroundings far and wide and there's a river (a stream) not exactly the Danube and a village not exactly a bustling commercial center but it's a legendary summer vacation center.

A short drive north from Belgrade the road leads to Rome, westward it leads to Vienna, both quiet villages compared to their Italian and Austrian counterparts, but popular destinations today for their extensive mountain trails.

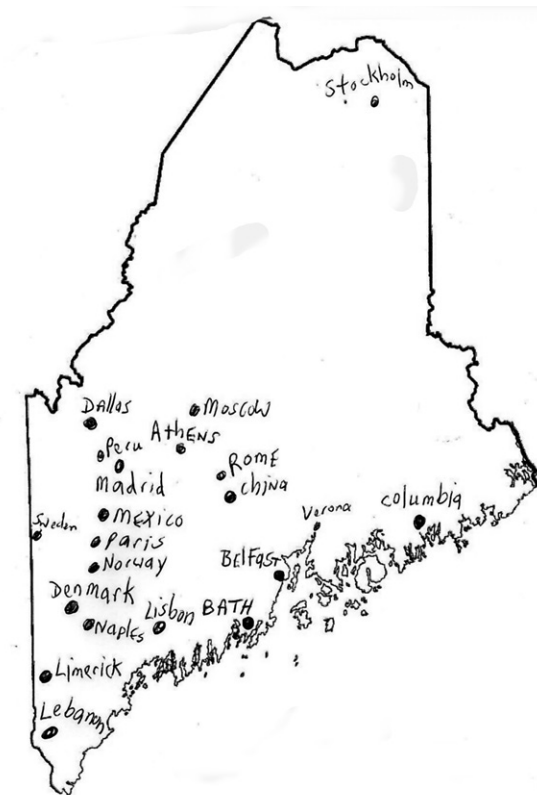
Beyond Rome are the towns of Norridgewock and Skowhegan on the Kennebec River. Like many names of area lakes, mountains and parks, these town names come from the native Indians.

Southward from Belgrade and to the west is picturesque Mount Vernon, which conjures up



references to the country's first President. To the east is Sidney, which even without the same spelling, brings to mind Australia.

North of Sidney lie the "ville," the "land" and the "fields," Waterville, Oakland, Smithfield and Fairfield. These are the towns - and there are many more like them - whose names typically are basic descriptions of what transpired historically, who figured prominently or what characteristic predominated (water, oak trees).



Too practical? Too basic? Then it's time to explore Maine's world of names some more. There are countries to visit: Sweden, Denmark, Norway, China - and cities, too, like Paris, Madrid and Athens....



Mid-Maine Marine Inc.
885 Kennedy Memorial Drive, Oakland, ME 04963
1/2 Mile West of Exit 127 off I-95 • 1-800-649-2628
www.midmainemarine.com

Check for Specials

August Clearance

- See
- Used boats,
- Get quotes online

Pontoon Boat Packages to CELEBRATE Summer 2016

Harris FlokBot

Over 70 Models in Stock

Wings Hill Inn & Restaurant

Gourmet Dining
Culinary Institute Chefs
Casually Elegant Accommodations
Attentive Service

BELGRADE LAKES

www.wingshillinn.com
207-495-2400

CIRCA 1800

Hamlin's Marine

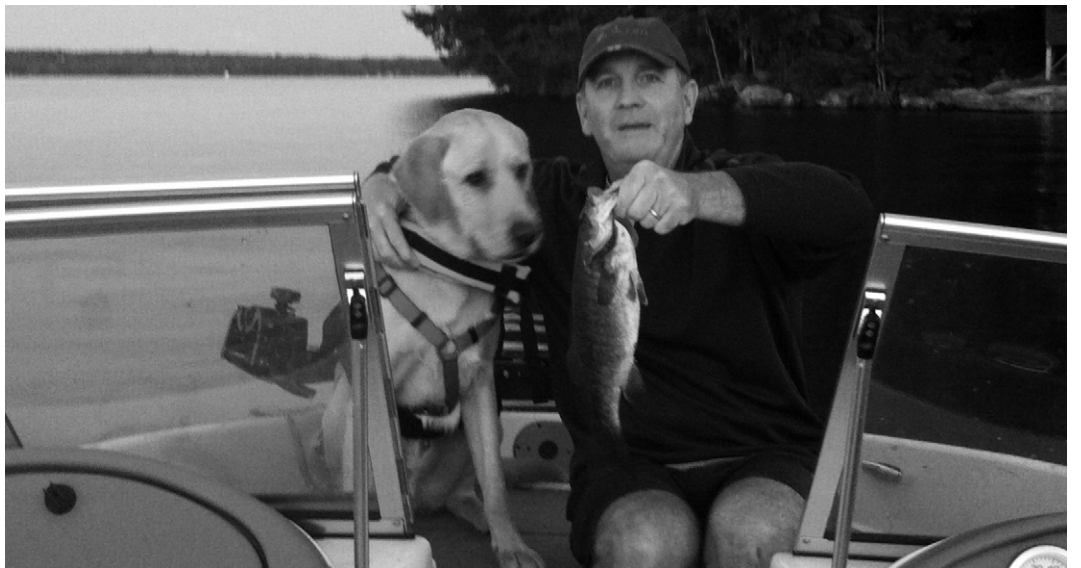
G SERIES BENNINGTON

290 West River Road, Waterville • 207-872-5660
581 Main Road North, Hampden • 207-907-4385
www.hamlinmarine.com

YAMAHA



The Dog Who Loves To Fish



Meet Cameron, who has a family home on North Pond and LOVES to fish. What a perfect way to spend the dog days of summer. Kudos to Cameron for observing the boating laws and the buddy system by wearing a life jacket while out on the boat and bringing a human along.

How will you use
your Home Equity
Line of Credit?

3.25%
APR*
2 Years

After the first 24 months, rate will be variable
based on the Prime Rate, minimum
3.99%
APR*

Other rates and terms available.



Pay for college?



Knock down
high interest debt?



Fix up your home?

More than just a line, it's straight talk and a fair deal.
Call 800.303.9511 or visit SkowheganSavings.com



FDIC

*Offer good through June 30, 2016. No closing costs for customers with an Integrity Plus checking account unless an appraisal is required. Maximum loan-to-value is 85% on a 1-4 family, owner-occupied residence. APR rates based on a minimum draw of \$10,000 of new money. Introductory rate of 3.25% will remain fixed for 24 months after the date of closing then convert to a variable rate based on the Wall Street Prime rate at that time. This rate will be subject to change but will not be lower than 3.99% APR or higher than 18% APR. Usual closing costs range from \$300-\$400. All loans subject to credit approval. Other restrictions may apply.



Skowhegan
Savings

Straight Talk. Fair Deals.

We put you on the best path to
find a primary care provider.



Finding a primary care provider who listens. Who delivers high quality, personal care. It should be easy—we agree. It's why Inland Hospital gives you *three simple ways* to find the respectful care you and your family deserve:

Call us at 1-800-914-1409 or
email us at inlandproviderfinder@emhs.org or
visit inlandhospital.org/providerfinder.

Whatever way is most convenient for you!



Inland Hospital

EMHS MEMBER

200 Kennedy Memorial Drive • Waterville • 861-3000
inlandhospital.org



MICHAEL
BREault

Creative
solutions for
all your Mac needs

Macintosh and iOS
support, based in
Western Maine,
working onsite throughout Maine



If you have Macs, iOS devices, software or network problems, websites you'd like built, or any ideas you would like to implement using Macintosh computers, give me a call and we can discuss if I can help...

207-578-0226 • www.michaelbreault.net



Table of Contents

The World of Maine..... 1

Fishing with Cameron..... 2

Table of Contents..... 3

Team Hallowell Helps Dempsey Challenge..... 3

Designing Women Annual Show..... 3

Luckiest Boy: Water Skiing Behind A Plane..... 4

Take It Outside: Summer Time Flies..... 5

Directory of Outings, Sites and Sights..... 6-7

The Dams Keeper Report..... 7

Calendar: Late Summer Events..... 8

Map of the Kennebec Corridor..... 9

Belgrade Lakes Region Map..... 10-11

Upcoming: Look Ahead, Enjoy Later..... 12

Conservation Too: Local Agriculture..... 13

Accommodations: Good Nights..... 14

Notebook, News, Notations, Trivia..... 14

Dining: Nearby and Awesome..... 15

Inland Hospital's LET'S GO..... 15

Business Directory: Services, Shops..... 16-17

Successful Season for GP Yacht Club..... 18

LakeSmart Tip..... 18

Gaslight Presents Black Coffee..... 19

Team Hallowell/2016 Dempsey Challenge

The Dempsey Challenge presented by Amgen is a run, walk and cycle fundraising experience for The Patrick Dempsey Center for Cancer Hope & Healing in Lewiston, Maine. The 2016 Dempsey Challenge will take place on October 1 & 2!

One-hundred percent of funds raised by Dempsey Challenge participants directly benefits the Dempsey Center, allowing us to provide free support, education and integrative medicine services to anyone impacted by cancer.

Comprised of various cycling distances (10, 25, 50, 70 and 100 miles), and a 5K (3.1 mile) and 10K (6.2 mile) run/walk, participants 18 and over are required to raise \$150 (and encouraged to raise even more!) as they prepare for The Dempsey Challenge.

More than just a fundraising event, the Dempsey Challenge also includes a free, family-friendly Festival in the Park, Kids' Fun Run, Survivor Walk.

This is a weekend of hope and camaraderie integrates the passion and support of the cancer.

We have many items up for bid because of generous supporters, such as, Red Barn, Early Bird Restaurant, Aroma Joes, Detailz Salon Last Unicorn, Thirsty Mule, Sams Club, D&L Store, Korner Store, Longhorns, Ruby Tuesday, Sweet Dreams, Hammond Lumber, McCormack Lumber, Whisperwood Camps, Country Crows, David Hallowell Construction, Wings Hill, David Stevens, Jason Stevens, Bob the Plumber, Augusta Fuel, Dead River, Kennebec Federal Savings and that is listing just a few...with lots more.



Designing Women

On Saturday, August 27, Designing Women will hold its annual outside show at Longfellow's Greenhouse in Manchester from 9:30 am to 4 pm.

The event will feature over twenty local female artisans and will have on display high quality and beautifully handcrafted pottery, handbags, jewelry, glasswork, handwoven clothing and accessories, home accents, stained glass, naturally beauty and body care products, sculptural ceramic art and more. It's a great opportunity to buy gifts or treat one's self.

There will also be Maine Mystery Writers and Children's Book Authors to sign and sell their books and live music during the show.

The suggested \$2.00 door donation and all lunch/refreshment proceeds will be donated directly to the Sexual Assault Crisis and Support Center in Winthrop.

Longfellow's is located at 81 Puddledock Road and will be offering end-of-the-season specials during the show. For more information call 582-7985.



Summertime in the Belgrades

--A Cider Mill Press Publication--
PO Box 290, Belgrade Lakes, ME 04918
Editor: Esther J. Perne, 207-495-3777 • ebelnews@earthlink.net
Advertising Director: Erle Morse, 207-495-3777 • ebelnews@earthlink.net
Layout Design: Michael Breault, 207-578-0226 • mo.breault@gmail.com
Webmaster : Gregor Smith • gregor@roadrunner.com
www.sumbelnews.com

This publication is copyrighted ©MMXVI, Cider Mill Press Publications, All Rights Reserved.

CSS Cayer Security Services, Inc.
COMMERCIAL & RESIDENTIAL
Burglary & Fire Alarm Systems
Video Surveillance & CCTV
Access Control
24 Hour UL Listed Monitoring Service
453-9177
www.cayersecurity.com

NORTH BAY ESTATES
ROUTE 8 • NORTH BELGRADE
~ FOR SALE ~
Custom Built Homes
by Craig's Carpentry
1 & 2 acre lots
with lake views from
Great Pond overlook
Craig Alexander
cell (207) 649-3749 • crgsnbe@yahoo.com

Join us...and help protect our lakes!

Protect and Preserve
B.L.A.
EST. 1908
Belgrade Lakes Association
137 Main Street, Belgrade Lakes, Maine 04918
207-512-5150 • www.belgradelakesassociation.org



—The Luckiest Boy—

Water Skiing behind Junior's Airplane

by Rod Johnson

Here we go with another Great Pond adventure from a long time ago. I must admit being a spectator only, as this happened when I was 7 or 8 years old.

Boys will be boys as one old adage says, and they seem to want to press the limits in attempting various feats that might cause their demise. Having a brother ten years older allowed me to get a front row seat on some of the antics that he and the other local boys that age were up to during the summers of 1954 and '55.

One antic/feat that I was able to watch, was bro and his friends water skiing behind an airplane over in Sahagian Cove, between Woodland Camps and Abena Peninsula. One young man a little older named Junior Sahagian was fortunate enough to own, and probably with his father's help, a Republic Seabee RC-3 airplane. These planes were built during the mid 1940s under contract from the Army and Navy. After WWII it was the hope that returning war flyers would want them for recreation. The planes were well made, powered by 210 horsepower Franklin engines, but demand was spotty and the last Seabee was sold in 1948 for \$6,000.

Junior's Seabee was often kept down in the end of the cove where his dad owned what we now call Sahagian's beach. Several of the local boys asked Junior if he would tow them on water skis. I remember they did it several times one summer with varying results. The idea was for the plane to pull them up one at a time, which was agonizingly slow. Once the skier was up Junior would increase the flying boat's speed to above 50 miles per hour and lift the plane barely off the water. By then the skiers had either fallen or were so tired and scared as to not let go. Of course there were bets and counter bets as to who could stay on for the longest time. The older boys were as red as a cooked lobster when they finished their turn, and every one complained that the water spray behind the plane felt like BBs hitting them. No one got hurt badly that I know of, but



RB3 Republic SeaBee like Junior's

let's tip one to the boys who gave it a ruddy go—Beaver Pray, Karl Johnson, Dick Johnson, Mel Pray, Puggy Damren, and probably others, too.

If you ever see a Seabee at some little airport or a museum, you'll appreciate it. Google says there are about 250 Seabees in the world that are still flying. Some were altered over the years with the addition of a second engine, which made a huge difference in the plane's performance. THE END (included is a photo of a Seabee airplane, often referred to as a flying boat)

Author's note: Hang in there, we got a few more for ya! There's only a few folks left that remember this but special thanks to Bill Pulsifer on Main Street, who told me that he remembers taking some 5 gallon cans of gas in his little boat out to Junior when the airplane had run out of gas!



Experience the Legend



New England's only
distiller of Absinthe

Maine's Best Spirit, 2016
—Down East Magazine

152 Fairfield Street, Oakland, ME 04963
www.treespiritsofmaine.com

Your Family's Home for Health and Wellness



Please join us in welcoming
Jennifer Caudell, FNP
to our health center!

We are excited to have Jennifer join our
Medical team this September!

Time for Your Child's Back-to-School Checkups & Physicals!



Amy
Madden
MD

Lisa
LaGrange
FNP

Bert
Mason
DPM

Kimberly
Patnode
LCSW

Diane
Raymond
PhD, PMHNP

Michelle
Sweetser
FNP

We Accept All Insurances, MaineCare and offer Sliding Fee Scale



— Take It Outside —

Over two thousand years ago, the Roman poet, Virgil, wrote of the rapid (and irretrievable) passage of time, usually expressed by the Latin phrase, “Tempus fugit.” According to physicists (at least prior to Einstein) and clockmakers, time passes at a constant rate but the human brain processes time at different rates depending on your age and what you are doing. I know that some things, such as waiting for this Presidential election to be over, seem to take forever whereas a day on the water catching lots of fish seems to pass in the blink of an eye. There is an old expression that says, “Time flies when you’re having fun.” I must be having a lot of fun because I am completely amazed at how quickly this summer has flown by. This is already my 11th weekly “Take it Outside” column this summer and every week seems to go by quicker than the last.

A bit of tendinitis in one of my knees kept me off the steeper trails this week but I spent a lot of time wandering the woods and fields picking blueberries and blackberries. At one point I was picking high-bush blueberries along the shoreline and was pressed up against a bush a couple of feet taller than I while reaching into the center of the bush to pick a particularly large, ripe berry. Suddenly a flock of about six Tufted Titmice landed on the other side of the bush and one bird landed right next to the berry I was reaching for and plucked it as I tried to remain motionless. Time seemed to stand still as the bird suddenly spotted my hand about 6 inches in front of its beak and slowly turned his head to follow my arm until he spotted me staring at him. He cocked his head, stared back for several seconds and then

Time Flies When You Are Having Fun

by Pete Kallin



School of bass over school of alewives. Bass diving into low oxygen layer to feed on alewives

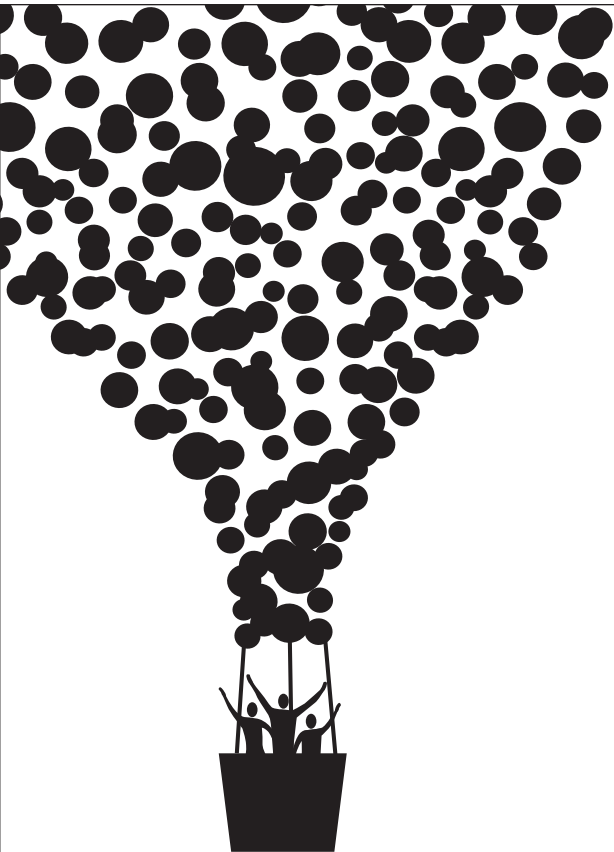


19-in bass on white zonker.



18-in bass on jigging Rapala.

Continued on page 9....



Cancer Survivors Day

Rain or shine!

Please join us for a day of Celebration, Education & Networking!



Milad Bozorgnia



Patty Morini



Adriana Walsh

This year’s opening ceremony features three survivors who will share their stories of gratitude and purpose. This free family event is for anyone whose life has been touched by cancer — patients, families, friends . . . our community.

This year’s theme is focused on gratitude. Gratitude has the power to heal, energize and change lives. What are you grateful for?

Take the time to visit the vendors offering you free screenings, education, samplings of resources and more.

Don’t miss this wonderful experience.

Saturday, Sept. 10, 2016 • 1 - 5 p.m.

Harold Alfond Center for Cancer Care
361 Old Belgrade Road, Augusta
To learn more, call 626-4858 or visit www.maine-general.org/cancer

MaineGeneral
Harold Alfond Center
for Cancer Care
www.maine-general.org





Calendar Directory

TOWN BY TOWN...

GREAT VISITS, AWESOME OUTINGS – ART, MUSIC, CULTURE, HISTORY, RECREATION, FARMERS' MARKETS, TRAILS, SCENIC SITES, AND MORE...

AUGUSTA

- **Viles Arboretum**, 224 acres with 6 miles of year round walking trails, including art and sculpture trail, open dawn to dusk, Visitor Center open Monday-Friday, 9 am-4 pm, admission free, 626-7989, www.vilesarboretum.org, 153 Hospital Street
- **Farmers' Market at the Arboretum**, indoors, Friday 1-5 pm
- **Art in the Capitol**, Maine Arts Commission monthly self-guided exhibits in State House hallways (Mon-Fri 8 am-5 pm), Blaine House (call for times), and Maine Arts Commission Office (8:30am-4:30 pm), 287-6746, mainearts.maine.gov
- **Children's Discovery Museum**, CDM, hands-on displays, activities, Tuesday-Thursday 10 am-4 pm, Friday-Saturday 10 am-5 pm, Sunday 11 am-4 pm, admission, 622-2209, www.childrensdiscoverymuseum.org, 171 Capitol Street
- **Danforth Gallery**, Jewett Hall, art exhibits, UMA-1234, www.uma.edu
- **Governor's Mansion**, 1830 Blaine House, Tuesday-Thursday 2-4 pm, 287-2121, www.blainehouse.org, State Street
- **Holocaust and Human Rights Center of Maine**, Michael Klahr Center, Monday-Friday 8 am-4 pm, 621-3530, www.hhrc.uma.edu, University of Maine at Augusta, off Route 27
- **Kennebec Historical Society**, Wednesday-Friday 10 am-2 pm, 622-7718, www.kennebechistorical.org, 107 Winthrop Street
- **Maine State Museum**, Tuesday-Friday 9 am-5 pm, Saturday 10 am-4 pm, \$2 adults, \$1 ages 6-18, 287-2301, www.maine.statemuseum.org
- **Maine State House**, Hall of Flags, House and Senate Rooms, Klir Beck dioramas, Monday-Friday 8 am-5 pm, book tours at Maine State Museum, walk-ins welcome 9 am-1 pm, 287-5600, www.maine.gov, State Street
- **Maine State Library**, Monday-Saturday opens 9 am, 287-5600, www.maine.gov/msl/, State Street
- **Museum in the Streets**, walking/history tour, www.augusta-maine.gov, Water Street/downtown.
- **Old Fort Western**, 1754 fort, house, store, 1-4 pm daily, admission \$6, 4-14 years \$4, 626-2385, www.oldfortwestern.org, Cony Street
- **Riverfront Park**, boat launch, Greenway Trail, playground, eastside Kennebec River
- **Kennebec River Rail Trailhead**, Maine State Housing Authority parking lot, 623-8162, www.krrt.org, Water Street
- **University of Maine at Augusta Fitness Trail**, 2 miles of wooded trails, near Civic Center, Route 27
- **Farmers' Market at Mill Park**, Tuesday 2-6 pm, 626-2305, www.farmersmarketmillpark.org/, North Water Street
- **Farmers' Market at Turnpike Mall**, 549-5112, Wednesday and Saturday 10 am-1 pm, Western Avenue

BELGRADE LAKES

- **Belgrade Lakes Market**, 320-8303, careybor@yahoo.com, Sunday 8 am-1 pm, Main Street
- **Great Pond Mailboat**, 592-1537, Monday-Saturday 10 am,

Post Office, Main St.

- **The Belgrade Community Center for All Seasons**, pool and lakefront, gym, playground, picnic area, rec programs, 495-3481, www.belgrademaine.com, 1 Center Drive
- **Union Church Coffee House**, check for schedule, 7:30 pm, \$5, 495-3599, www.unionchurchmaine.org, Main Street
- **Belgrade Historical Society**, 495-2973, belgradehistoricalsociety.org
- **Belgrade Lakes Market**, Sun 8 am-1 pm, Main Street
- **Peninsula Park on Long Pond**, picnic tables, Main Street
- **Maine Lakes Resource Center**, 512-5150, www.maine.lakesresourcecenter.org, 137 Main Street

FAIRFIELD

- **Fairfield Historical Society**, 1890 Cotton-Smith History House, every Tuesday 9 am-12 noon and 1-4 pm and second Saturday of month, 453-2998, www.fairfieldmehistoricalociety.net, 42 High Street
- **Farmers' Market**, 948-5724, Wednesday 2-6 pm, Saturday 9:30 am-1:30 pm, Nazarene Church parking lot, 81 Main Street

FARMINGTON

- **Farmington Historical Society, Titcomb House Museum**, 778-4275, Wednesday and Saturday, 11 am-2 pm, July-August, www.farmingtonhistory.org, 118 Academy Street
- **Nordica Homestead Museum**, opera singer Lillian Nordica costumes, jewelry, mementos, 778-2042, Tuesday-Saturday 10 am-12 noon and 1-5 pm, Sunday 1-5 pm, www.lilliannordica.com, 116 Nordica Lane, Holley Road
- **Contra Dance**, 491-9928, www.starleft.org 2nd Saturday of the month, all welcome, 6:30-7:30 pm family dance, 8-11 pm regular dance, admission, Grange Hall, Bridge Street, Route 43, West Farmington
- **University of Maine campus and Arboretum**, four walking tours with informal guide pamphlet to campus trees, 581-1541, www.umaine.edu/arboretum/, downtown
- **Farmers' Market**, 778-6602, Friday 9 am-2 pm, Better Living Center parking lot, Front Street; Saturday 8 am-12 noon, Main Street
- **Meetinghouse Park and Gazebo**, weekly concerts throughout summer, downtown
- **Fairgrounds**, events throughout summer, Franklin County Fair in September, High Street

GARDINER

- **Artdogs and Circling the Square Fine Art Press**, Friday 1-5 pm, Saturday 10 am-4 pm, 582-6600, www.theartdogs.com, 275-277 Water Street
- **Johnson Hall Performing Arts Center**, 582-7144, www.johnsonhall.org 280 Water Street
- **Monkitree**, art exhibits, 512-4679, www.monkitree.com, Tuesday-Friday 10 am-6 pm, Saturday 12-6 pm, 263 Water Street
- **SpinOff Studio**, 588-7297, spinoffstudio.org, Monday-Friday 8:30 am-4:30 pm, 405 Water Street
- **Farmers' Market**, 512-8022, www.gardinerfarmersmarket.org, Wednesday 2-6 pm, rain or shine, The Common
- **Kennebec River Rail Trail**, 623-8162, www.krrt.org, access near Gardiner/Randolph Bridge, 6.5 miles to Augusta
- **Waterfront Park**, picnicking, events throughout summer, Kennebec River

GREENE

- **Araxine Wilkins Sawyer Memorial**, free entertainment programs, monthly - Friday 2 and 7 pm, 946-5311, www.sawyer-foundation.com, 371 Sawyer Road, off Route 202

HALLOWELL

- **Harlow Gallery**, Kennebec Valley Art Association, 622-3813, www.harlowgallery.org Wed- Sat, 12-6 pm, 160 Water Street
- **Gaslight Theater**, 626-3698, www.gaslighttheater.org City Hall, 1 Winthrop Street
- **Museum in the Streets**, history/walking tour, www.historichallowell.org, downtown
- **Farmers' Market**, 622-1350, Sun 3-6 pm, Water Street
- **Vaughn Woods and Homestead**, 166 acre park/trails/homestead, Middle Street
- **Kennebec River Rail Trail**, www.krrt.org, to Augusta, Farmingdale/Gardiner, Water Street
- **Waterfront Park**, deck/walkway on Kennebec River, North Water Street

HINCKLEY

- **L.C. Bates Museum at Good Will-Hinckley School**, early 20th century natural history and cultural exhibits, nature trails and camps, adults \$3, up to 17 years \$1, 238-4250, www.gwh.org Wednesday-Saturday 10 am-4:30 pm, Sunday 1-4:30 pm, Route 201

KINGFIELD

- **Ski Museum of Maine**, 265-2023, www.skimusuemofmaine.org, 256 Main Street
- **Stanley Museum**, 265-2729, www.stanleymuseum.org, memorabilia/displays on photographs, violins and Stanley Steamers, Tuesday-Sunday 1-4 pm, 40 School Street

LIVERMORE

- **Washburn-Norlands Living History Center**, 18th-19th century mansion/farmstead/schoolhouse, library, chapel, 897-4366, www.norlands.org, admission, living history tours Tuesday and Thursday 1-4 pm, 290 Norlands Road

MADISON

- **Lakewood Theater**, Maine's Summer Theater, Young Performers Camp, 474-7176, www.lakewoodtheater.org, Route 201
- **Skowhegan School of Painting and Sculpture**, 474-9345, www.skowheganart.org, summer evening artists lecture series, East Madison Road

MONMOUTH

- **Monmouth Museum**, local and regional Maine history, Wednesday-Sunday 1-4 pm, 933-2287, www.monmouthmuseum-inc.org, 751 Main Street
- **The Theater At Monmouth**, The Shakespeare Theater of Maine, Cumston Hall, 933-9999, www.theateratmonmouth.org, Main Street

MOUNT VERNON

- **D.E.W Animal Kingdom**, Zoo, 293-2837, 918 Pond Rd, Route 41
- **Villages Market**, farmers/crafters, Saturday 10 am-2 pm (start end of June), next to Flying Pond Store, sharihamilton@gmail.com, Route 41



Elliot B. Thayer, PLS, PE
Andrew Dunbar, PLS, LPF, LSE
RESIDENTIAL & COMMERCIAL
SITE DESIGN
STATE & LOCAL
PERMIT APPLICATIONS
PREPARED & PRESENTED
17 Hasson Street
Farmingdale, ME 04344
582-7762
www.thayereng.com

Lakepoint

REAL ESTATE

P.O. Box 221, 221 Main Street
Belgrade Lakes, Maine 04918
Cell: (207) 592-5577
Office: (207) 495-3700
Fac: (207) 495-3707
www.belgradelakepoint.com
stephanie@belgradelakepoint.com



Stephanie Yeaton
Broker

PAUL HANNA'S PLUMBING



207-495-3805

New Homes and Remodels ~ Camps
Water and Sewer Pumps ~ Water Filtration
Paul Hanna, Licensed Master Plumber



NEW PORTLAND

- **Nowetah's American Indian Museum and Craft Shop**, 628-4981, www.nowetahs.webs.com/, daily 10 am-5 pm, free, 628-4981, 2 Colegrove Road, Route 27
- **Wire Bridge**, 1864, probably only wire suspension bridge in U.S., off Route 27

NEW SHARON

- **Farmers' Market**, Saturday 9 am-1 pm, Douin's Market, 491-9025, 150 Mercer Road, Routes 2/27
- **New Sharon Historical Society**, Saturday 1-3, 778-4167, Routes 2/27

NORRIDGEWOCK

- **Norridgewock Historical Society Museum**, 1838 building, Saturday 10 am-1 pm, 634-5032, www.norridgewockmuseum.com, Mercer Road, Route 2
- **Oosoola Park**, picnic area, great playground, boat launch, on Kennebec River, Route 8

OAKLAND

- **Macartney House Museum, Oakland Area Historical Society**, 465-7549, Wednesday 1:30-4:30 pm, 1815 home with antique furnishings and Oakland artifacts, 25 Main Street
- **Town Parks**, playground, picnic tables, swimming area, boat launch area, Belgrade Road on Lake Messalonskee and McGrath Pond Road on McGrath Lake
- **Farmer's Market**, Friday 2-6 pm, 465-3094, Pine Acres Parking Lot, 895 Kennedy Memorial Drive

READFIELD

- **Readfield Historical Society and Museum** in 1853 school-house, 685-4662, www.readfieldhistorical.org, Thursday and Saturday 10 am-2 pm or by appointment, Route 17, Readfield Depot

ROME

- **Mt. Philip Grange**, suppers 3rd Sat of month, 4:30-6 pm, all you can eat beans, cornbread, rolls, chop suey, pies, Routes 135/225
- **Trails**: Mount Philip, Route 225; The Mountain, Route 27; French's Mountain and Kennebec Highlands, Watson Pond Road; for information call 495-6039 or visit www.belgradelakes.org; maps available at BRCA, 137 Main Street, Belgrade Lakes

SIDNEY

- **New England Music Camp**, concerts free and open to the public, Bowl-in-the-Pines on Lake Messalonskee, 465-3025, www.nemusiccamp.com, 8 Goldenrod Lane, Route 23
- **Sidney Historical Society**, 724-8032, www.sidneyhistoricalsociety.org, 2986 Middle Road
- **Silver Spur Riding Club**, horse shows, River Road, Route 104

SKOWHEGAN

- **Margaret Chase Smith Library**, residence, home, museum exhibits, 474-7133, www.mcslibrary.org, free, Monday-Friday, 10 am-4 pm, 54 Norridgewock Ave.
- **History House Museum**, 1800s local history and culture, heirloom gardens, free, Tuesday-Saturday, 10 am-4 pm, 474-6632, www.skowheganhistoryhouse.org, 66 Elm Street
- **Fairgrounds**, weekly horse shows/competitions, free public

events, covered arena, Skowhegan State Fair in August, 474-3621, Madison Avenue, Route 201

- **Farmers' Market**, Wednesday 3-6 pm, Saturday 9 am-1 pm, weekly entertainment, 938-3906, Somerset Gristmill parking lot, downtown

SMITHFIELD

- **Fairview Grange**, 362-2791, Route 8
- **Smithfield History Society "The Groves House,"** 634-4392, 21 Lakeview Drive
- **Sunbeam Roller Rink**, 362-4951, 830 Village Rd, Route 8
- **Sunset Camps**, public beach, 362-2611, www.sunsetcamps.com, 834 Village Road, Route 8

UNITY

- **Unity College Centre for the Performing Arts**, folk genre music, 568-3147, www.unitymaine.org, 42 Depot Street

WATERVILLE

- **Aqua City Actor's Theatre (ACAT)**, 873-7000, www.acattheatre.org, Waterville Opera House Studio Theater, Main Street
- **Museum in the Streets**, downtown history/walking tour, www.themuseuminthestreets.com/waterville.htm
- **Head of Falls Park/Two Cent Bridge**, historic foot bridge over Kennebec River connecting Waterville and Winslow, Front Street
- **Common Street Arts**, 872-2787, www.commonstreetarts.org, Wednesday-Saturday 12-6 pm, 16 Common Street
- **Colby College Museum of Art**, 859-5600, www.colby.edu/museum/ Tuesday-Saturday 10 am-5 pm, Sunday 12-5 pm, free admission, Colby College Campus, Mayflower Hill
- **Colby College Special Collections**, Miller Library, Monday-Friday 10 am-12 noon and 1-4 pm, free admission
- **Thomas College Art Gallery**, 180 West River Road
- **Waterville Historical Society and Redington Museum**, 1814 home and pharmacy, 872-9439, www.redingtonmuseum.org. Tuesday-Saturday tours at 10 and 11 am, 1 and 2 pm, 62 Silver Street
- **Waterville Opera House**, 873-7000, www.operahouse.com, 93 Main Street
- **Farmers' Market**, Thursday 2-6 pm, 680-2055, www.watervillefarmersmarket.org, The Concourse parking lot

WAYNE

- **Farmers' Market**, 685-4657, <http://waynefarmersmarket.weebly.com>, Saturday 9 am-noon, Town Green, at the Mill Pond, Main Street

WILTON

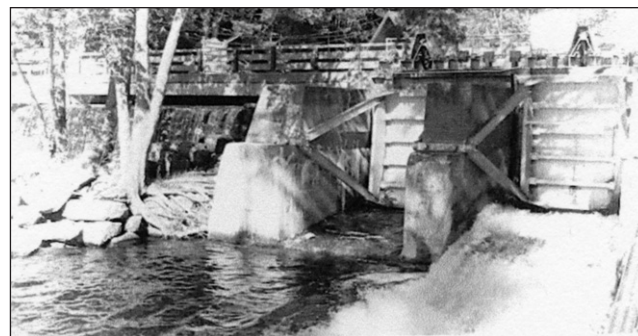
- **Wilton Farm & Home Museum**, 645-2091, 645-4578, www.thewiltonfarmandhomemuseum.org, Saturday 1-4 pm or by appointment, 10 Canal Street

WINSLOW

- **Fort Halifax on the Kennebec River**, historic fort tower, park, Route 201

WINTHROP

- **Norcross Park**, playground, picnic site, boat launch on Maranacook Lake
- **Farmers' Market**, 446-2899, Tuesday and Saturday 9 am-1 pm, town office parking lot, 17 Highland Avenue



The Dams Keeper Report

Your representatives on the Interlakes Dams Committee wish that we could magically add some water to our ponds but such is still past our reach! Our ponds are all in desperate need of rain.

Great Pond is now 7.56" below full pond with Long Pond currently at 8.76" below full. Like the Village spillway dam, both Wings Mill gates have remained completely closed since early May.

Both Great and Long Ponds are losing about 3/10" per day at this rate, which in doing some research are actually normal evaporation rates. An interesting article by C.E. Grunsky entitled "Evaporation from lakes and reservoirs" going back to September 1931 suggests that the evaporation rate with an ambient outside temperature of 85F is approximately 3/10" per day. Add that to our camps still using lake water in addition to the slight seepage from our dams and you can see why there are rocks now that we haven't seen since last fall's drawdown!

For those of you with boatlifts, now would be a good time to see if you can still get your boat off and if so, will you be able to by Labor Day without the needed precipitation.

Enjoy this beautiful summer weather and your vacation – it has been an incredible one!

Dick Greenan

Secretary, Belgrade Lakes Watershed Dams Committee



See page 18 for more on the Great Pond Yacht Club's successful season.

Additions/Updates/Corrections: Please contact Summertime in the Belgrades, 495-3777, with changes to this Directory.

Have a bucket list? Want a new experience?



C+E SEGWAYS

Located in Manchester, Maine

We offer tours by appointment only for ages 12 and up.

Safe, quiet and a wicked good time!

Reasonable Rates!

(207)215-4529

Call now to book a new adventure with us!

WATCHES • DIAMONDS
EXPERT WATCH REPAIR • STONESETTING • GOLDSMITHING

Larsen's Jewelry

SERVING YOU SINCE 1962



MARK A. LARSEN

57 MAIN STREET
WATERVILLE, MAINE 04901

207-872-6301
1-800-697-1874

J & M Logging, Inc.

622-6353

Cut to order
in lengths from 14" to 23"

Firewood

Green Certified Wood, Seasoned, & Ash
Cut, Split & Delivered

853 Civic Center Drive, Augusta, ME 04330

BELGRADE BOAT STORAGE

FREE LAKESIDE BOAT
PICKUP & DELIVERY

DARE TO COMPARE

Best Prices on Inside,
Outside Boat Storage,
Shrinkwrapping &
Winterization

Craig Pooler
Cell 207-314-3287 • Office 207-495-3421
Email: cpooler1@myfairpoint.net
www.BelgradeBoatStorage.com



— Calendar —

Thursday 8/18 through Sunday 8/21 - "Hello Dolly," Lakewood Theater, 474-7176, Rt. 201, Madison.

Thursday 8/18 - Sue Poliacik's Rutgers Trio, an evening of music at the Endowment Ministry Concert to support Love of Neighbor Fund, 7 pm, Union Church, Main Street, Belgrade Lakes.

Friday 8/19 - David Mello, Market Square Melodies, free live music on your lunch hour, 11 am-1 pm, Market Square Park, Water Street, Augusta.

Friday 8/19 - "The Illusion," by Pierre Corneille, 1 pm; "Cyrano," 7:30 pm, 933-9999, Cumston Hall, Theater at Monmouth.

Friday 8/19 through Sunday 8/21 - "Black Coffee," by Agatha Christie, \$12 adults, \$10 seniors and students, 7:30 pm Friday and Saturday, 2 pm Sunday, 626-3698, Gaslight Theater, Hallowell City Hall, Winthrop Street, Hallowell.

Saturday 8/20 - 1st Annual Belgrade Regional Conservation Alliance Disc Golf Open, in partnership with the Belgrade Lakes Disc Golf Course and the Maine Golf Tour, open to all ages, children under 13 require adult supervision, cash prizes for winners, 7:30 am-4 pm, 495-6039, Belgrade Lakes Disc Golf Course, 311 Mercer Road, off Route 225, Rome.

Saturday 8/20 - Lovejoy Shores Neighborhood Yard Sale, items include a dress-making mannequin, bicycle, Peruvian blanket, photographic materials, lawnmower and much more, participating households will have a colored

Yard Sale sign and a Balloon in their yards, rain date is Sunday, August 21, 9 am-2 pm, 897-3683, Lovejoy Shores Drive, between Kents Hill School and the Fayette Country Store, Route 17, Fayette.

Saturday 8/20 - "Alice in Wonderland," Act Two - Lakewood Young Performers Camp, performed by ages 9 and up, 10 am, 474-7176, Lakewood Theatre, 76 Theatre Road, off Route 201, Madison.

Saturday 8/20 and Sunday 8/21 - Auditions for "The Man Who Came to Dinner," cold readings from the script, 10 am Saturday and 6 pm Sunday, 626-3698, Gaslight Theater, Hallowell City Hall, 1 Winthrop Street, Hallowell.

Saturday 8/20 - Annual Sidewalk Art Festival, regional artists showcasing their work, a day-long celebration of the region, local music delicious food, sales, picnic area on lake and concert at Norcross Point, 10 am-3 pm, 377-8020, downtown Winthrop.

Saturday 8/20 - Concerts at Norcross Point, featuring Pat Pepin! Blues and more, renowned female Maine artist, free, 2:30 pm, 620-6231, Norcross Point, Lake Maranacook, Winthrop.

Saturday 8/20 - "Henry V," by William Shakespeare, 1 pm; "Love's Labour's Lost," by William Shakespeare, 933-9999, Cumston Hall, Theater at Monmouth.

Saturday 8/20 - Watercolors of Birds, open to all ages, this exploration in our bird room encourages visitors to paint and create in a lovely museum setting, all levels of artists encouraged to attend, 1 pm, 238-4250, L.C. Bates Museum, Route 201, Hinckley.

Saturday 8/20 - First Annual Pasta

Dinner to benefit the Dempsey Challenge and the Dempsey Center, dinner at 4 pm, live auction 6 pm, donations accepted at the door, 465-5924, the Belgrade Community Center for All Seasons, Route 27, Belgrade Lakes.

Saturday 8/20 - Mt. Philip Grange Supper, 3 kinds of beans, American chop suey, hot dogs, coleslaw, bread and pies, all you can eat, adults \$7, under 5 free, family of 4 or more \$20, Grange Hall, Routes 27 and 225, Rome.

Saturday 8/20 - "Doc Cooper; A Son Recalls," the 60-year career of Maine's legendary large animal veterinarian, a work in progress told through the Masks & Stories of Mime Artist, Michael Cooper, 7:30 pm, Chesterville Center Union Meeting House, 1 Borough Road, Chesterville.

Sunday 8/21 - "The Barber of Seville," by Pierre Beaumarchais, 1 pm, 933-9999, Cumston Hall, Theater at Monmouth.

Sunday 8/21 - Music at Norcross Point, 2-4 pm, 620-6231, Norcross Point, Maranacook Lake, Winthrop.

Sunday 8/21 - Care and Preservation of Cherished Possessions - "What Do You Do With Gramma's Stuff?", a round table discussion with local experts, free and open to the public, refreshments will be offered, 2-4 pm, 474-6632, under the tent on the riverside lawns, Skowhegan History House Museum & Research Center, 66 Elm Street, Skowhegan.

Sunday 8/21 - "Skowhegan Community Band," Coburn Park Concert, 5-6:15 pm, free, bring lawn chairs and blankets, 474-0527, Coburn Park Bandstand, Route 2, Water Street, Skowhegan.

Tuesday 8/23 - Quarry Road Summer

Race Series, makeup, 6 pm, www.quarryroadraces.com, Waterville.

Wednesday 8/24 and Thursday 8/25 - Maine Farm Days, free and open to the public, children's learning center, great food, chicken BBQ, whoopee pie and wild blueberry pie contest, workshops, wagon tours, crafts, much more, www.mainefarmdays.com, 622-7847 ext. 3, Misty Meadows Farm, Hill Road, Clinton.

Wednesday 8/24 through Saturday 8/27 - Blistered Fingers Family Bluegrass Music Festival, 12 live bands, extra large tent area, food concessions, camping, security, www.blisteredfingers.com, 873-6539, Litchfield Fairgrounds, Litchfield.

Wednesday 8/24 - Author and Poet Laureate Stuart Kestenbaum, presentation, signing and selling books afterward, free and open to the public, 6-8 pm, 495-3508, Belgrade Public Library, Depot Road, Belgrade.

Wednesday 8/24 through Saturday 8/27 - "Hello Dolly," 474-7176, Lakewood Theater, Route 201, Madison

Thursday 8/25 - Waterville Rocks, live music at Castonguay Square, 5-8 pm, Main Street, Waterville.

Thursday 8/25 - December '63, Frankie Valli & The Four Seasons Tribute Concert and Sponsor Appreciation Night, Bowl in the Pines, 7:30 pm, ticketed event, 844-476-6076, Snow Pond Center for the Arts, Route 23, Sidney.

Thursday 8/25 through Sunday 8/28 - Anson-Madison Days, children's activities, family events, music, food concessions, sales, competitions, parade and more, downtowns Anson and Madison.



MAINE-ly ELDER CARE

"Caring for the ones who cared for us"



In - Home Nursing • Personal Care Services • Homemakers
• Emergency Response Systems • Transportation Services

STATE REGISTERED PERSONAL CARE
AND HOME MAKER AGENCY

465-3249

28 Center St., Oakland, Me 04963

www.Maine-lyElderCare.com

denise@Maine-lyElderCare.com

DAY'S REAL ESTATE

"The Waterfront Specialists" 207-495-3111

262 Augusta Road (Route 27) • Belgrade Lakes, Maine 04918 •

Web: www.daysrealestate.com • e-mail: daysrealestate@roadrunner.com



EAST POND ~ 100' +/- of sparkling lakefront with sandy water access. 3 BR, 1.5 bath insulated and furnished cottage with dock, swim float, direct vent heater and full septic. Convenient to Waterville and Augusta. Price reduced. \$179,999



GREAT POND ~ HOYT ISLAND ~ Wonderful 7.4 acre lot with 265' +/- shorefront, one room camp, deck, generator power, gas light and 22' wooden dock. Electricity is nearby. Perfect spot to spend your summer. Boat access only. \$110,000



GREAT POND ~ Wonderful 7.4 acre lot with 265' +/- shorefront, one room camp, deck, generator power, gas light and 22' wooden dock. Electricity is nearby. Perfect spot to spend your summer. Boat access only. \$110,000



...Continued from page 5



Paul Feinberg with nice smallie

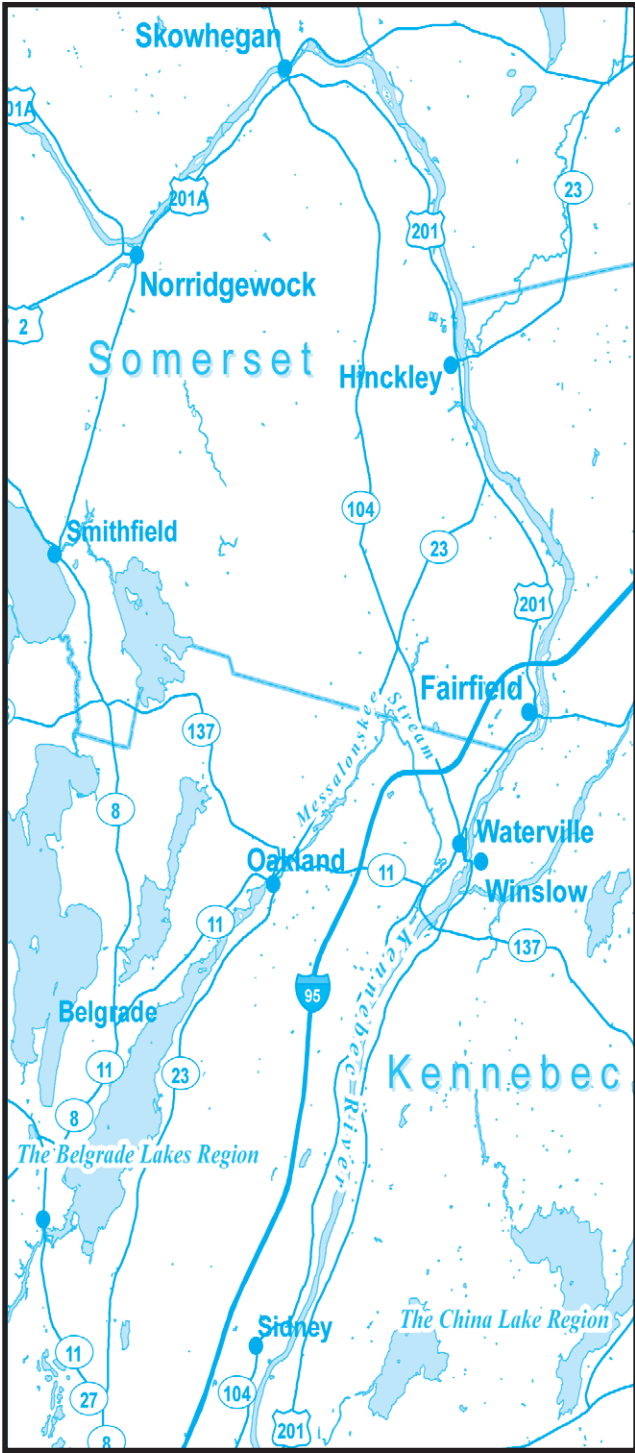
Me with same.

suddenly flew off to the next bush along with the rest of the birds.

I also spent a fair amount of time on the water, fishing, swimming, and sailing. The bass fishing has been excellent in the deep parts of the lake. Schools of big smallmouth bass and rafts of loons are gorging themselves on the landlocked alewives. One day last week I did my biweekly measurements of the Secchi depth and temperature-oxygen profiles in the lake for the Maine Volunteer Lake Monitoring Program (VLMP). I was watching my fishfinder as I was making my measurements and noticed a large school of alewives about 40 feet down and another school of much larger fish directly over them at 20 feet. According to my profile, the big fish were in the surface mixed layer (epilimnion) just above the thermocline in well-oxygenated (8 PPM), warm (22oC ~72oF) water and the baitfish were in the low oxygen (2.6 PPM), colder (12.9oC ~55oF) hypolimnion. Periodically a couple of the big fish would drop down deep to grab a few alewives.

When I finished my readings, I grabbed my flyrod and let my trusty white zonker fly sink to about 20 feet before twitching it and instantly tied into a nice bass (19-in, 4 lbs). In the next hour or so I got about a dozen nice smallies, the smallest of which was about 16-in, using my flyrod and my ultralight spinning

Kennebec Corridor



rod with a silver, jigging Rapala I normally use for ice fishing. I was having so much fun, I lost track of time and was almost late for a meeting I was supposed to be at. The next day, I returned with my friend Paul Feinberg who has been complaining about how slow the fishing has been on Great Pond. Despite a brisk wind, we managed to find the fish in the same general area and caught several nice ones on streamer flies. But summer is passing quickly. Tempus fugit! Time to carpe diem and get outside. And don't forget to take a kid or grandkid.

THIRTY-SIX
GREAT REASONS
MAINE'S ONLY 36-HOLE
PUBLIC GOLF COURSE
THE LARGEST GOLF FACILITY
NORTH OF BOSTON

Championship Golf, Full Pro Shop,
Driving Range, & Modern Clubhouse.
Groups Welcome

Natanis
GOLF COURSE

Webber Pond Road,
Vassalboro, ME • 207-622-3561

LakeHouse
Renovations

Design • Build • Renovate

Traditional Style Camps,
Cottages and Lakefront Homes

207.242.3663

www.lakehousedesignbuild.com

ACME LAND SURVEYING, LLC
Professional Land Surveyors – Professional Foresters
Property Surveys, Subdivisions, Topographic Surveys, MLIs,
Elevation Certificates/LOMs, ALTA/ACS Surveys,
Deed Research, Wetland Delineation, Forest Management

108 Fairbanks Rd., Suite 5
Farmington, ME 04938
Website: www.acmelandsurveying.com

Tel. (207) 778-4081
Toll Free (800) 778-4081
Email: info@acmelandsurveying.com

Expanded in 2014 to Better Serve Our Customers

**Belgrade Lakes
Marine & Storage, Inc.**

Winter Storage for Summer Vehicles

Secure newer storage facilities accommodate boats on trailers,
autos, and the largest RVs in 3 buildings totaling over 21,000 sq. ft.
Electrical charging outlets are available. Reasonable rates for real
protection from extreme winter storms and sun damage.

207-495-2378 • www.belgradelakesmarine.com

366 Augusta Road, Route 27, Belgrade, ME

Whatever needs updating at your house, we
have the **home equity loan** to get you started.

5-year	10-year
4.21% APR ¹	4.61% APR ¹

Apply Today! Stop by your local Maine State Credit Union branch
or call us at 623-1851.

¹The rate listed above is a fixed rate for a second mortgage. Closing costs and certain property/equity requirements apply. Rates presented above are for individuals with credit scores of 680 or higher. Individuals with credit scores of 679 and lower will receive a rate of 1.00% higher for each loan type. Loans are subject to approval and certain conditions may apply. ²The annual percentage rate (APR) for the 5-year home equity loan is 4.213% and is 4.612% for the 10-year fixed home equity loan. The APR is subject to change at anytime. Repayments for the 5-year loan are \$18.42 per \$1,000 for 60 months and \$10.36 per \$1,000 for 120 months for the 10-year loan. Federally insured by NCUA. Equal Housing Lender.



Design - Install - Maintain

Lake Smart Certified for all your Waterfront Needs

Plant Installation, Patios, Walks, Permeable Pavers Driveways, Plant Maintenance, Mowing, Fertilizing, Spring & Fall Clean Up



Serving all of Central Maine

474-2420

www.lynchlandscaping.com



Showing the Best of World and American Cinema

17 Railroad Square, Waterville, Maine, 04901

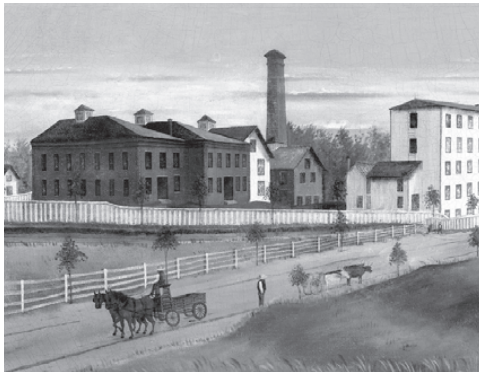
24-hour movie info:

207-873-6526

www.railroadsquarecinema.com



**Home of the
Maine International
Film Festival
(July 8 - 17, 2016)
www.MIFF.org**



A USABLE PAST

American Folk Art at the
Colby College Museum of Art

July 9, 2016–January 8, 2017

Colby College Museum of Art, Waterville, Maine
colby.edu/museum 207.859.5600



ST. MICHAEL SCHOOL

56 Sewall Street, Augusta, ME 04330
207.623.3491 www.smsmaine.org

**NEW Fall 2016...
PRE-K for 3 year-olds!**

St. Michael School will be opening a new Pre-School Program for 3 year-old children starting in the fall. This Program will have a curriculum, daily schedule and an overall program that is consistent with the mission and values that have been associated with a St. Michael School education. Register your child TODAY!



*A Legacy of Excellence,
a Foundation for the Future.*



Belgrade Vacation Rentals

CAMP & COTTAGE RENTALS

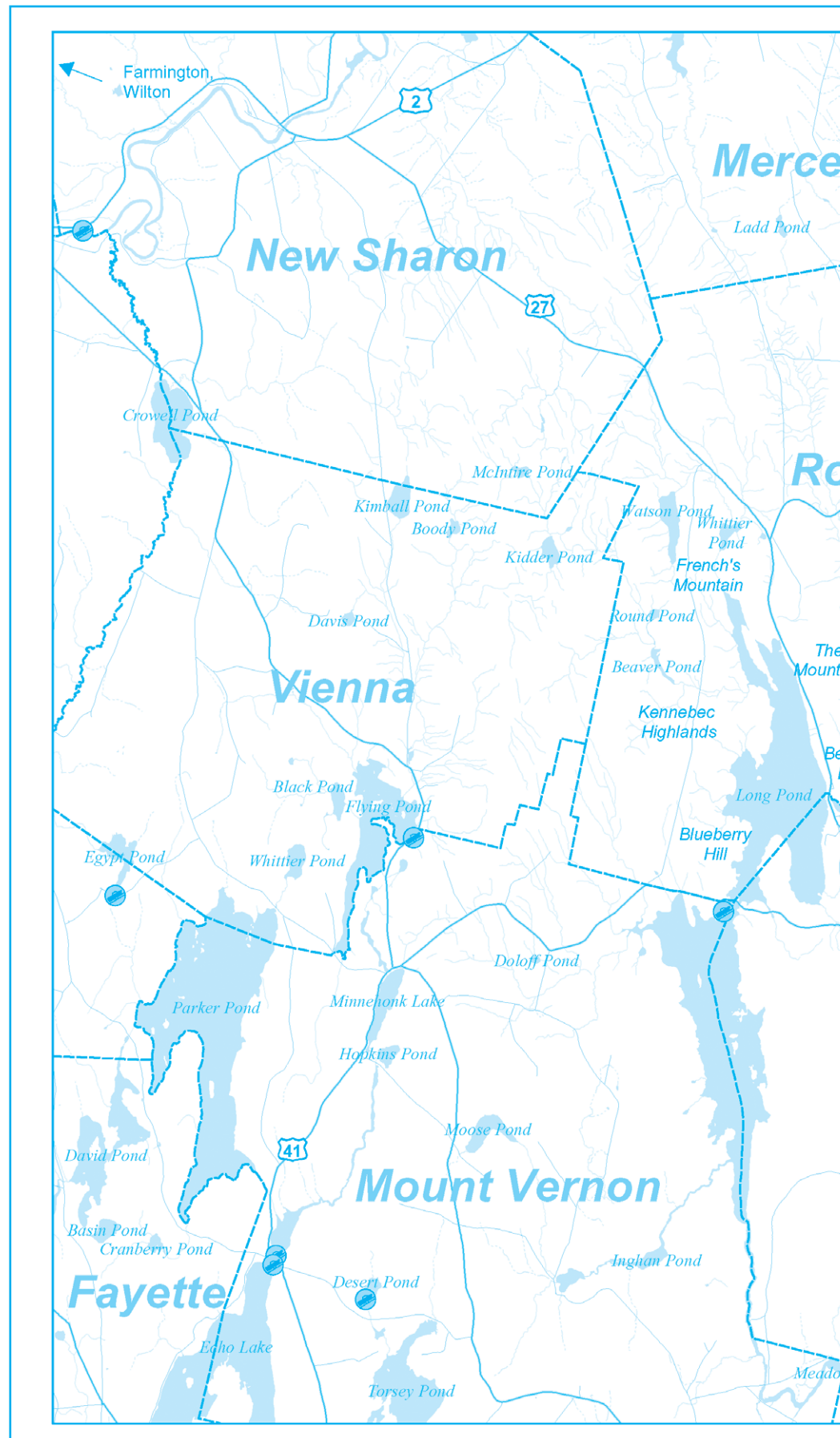
Located next to Pete's Pig Barbecue!

Contact Us Today!

(207) 495-4011

www.BelgradeVacationRentals.com

Own A Property? We Will Rent it for You!



"Your Sight is Our Vision"

- Comprehensive Eye Exams
- Eyewear Center / Contact Lenses
- State of the Art Cataract Surgery
- Retinal Diseases and Glaucoma
- LASIK Refractive Surgery
- Laser Surgery
- Oculoplastic Diseases
- Botox, Juvederm and Latisse

• Ambulatory Surgery Center

www.Maine2020.com



Steve R. Witkin, M.D.



Peter C. Kohler, M.D.



James R. Putnam, M.D.



Marc B. Daniels, M.D.



Helen Bell-Necevski, O.D.



Lorie Lepley Parks, O.D.



Michael C. Parks, O.D.



Ian M. Jones, O.D.

325A Kennedy Memorial Drive
Waterville, Maine 04901

873-2731
(800) 660-3403

RIVERSIDE FARM RESTAURANT & WINE MARKET

Restaurant Hours:

Brunch

Saturdays & Sundays - 10am-2pm

Lunch

Tuesdays - Fridays - 11am-2:30pm

Dinner

Thursdays - Saturdays - 5:30pm-8:30pm

Wine Market Hours:

Tuesdays - Fridays - 10am-5:30pm

Saturday - 10am-3pm

**291 Fairfield Street
Oakland, ME 04963**

For reservations call 207-465-4439

RiversideFarmMarket.com



RIVERFRONT BARBEQUE & GRILLE

WORLD CLASS BARBEQUE

SEAFOOD, PASTA, & VEGETARIAN ENTREES

207.622.8899

300 WATER STREET, AUGUSTA, MAINE

WWW.RIVERFRONTBBQ.COM

FULL SERVICE DINING * CATERING * BULK TAKE OUT



*The
Gin Mill*
Augusta, Maine

*Augusta's finest upscale lounge featuring
fine wine, martinis, and over 100 brands
of beer from Germany to Japan*

**Thursday thru Saturday 3:00pm until Midnight,
Above the Riverfront Barbeque & Grille
at 300 Water Street
207.620.9200**

Lakepoint REAL ESTATE

"Put The Team to Work For You"

207.495.3700

GAIL RIZZO 207-242-8119
gail@gailrizzo.com



PAT DONAHUE 207-730-2331
pldcamp@msn.com



NEW PRICE

**GREAT POND,
BELGRADE:** 3BR/2BA,
custom kit, fam rm, living
rm, cathedral ceilings,
open concept, pvt setting,
100' +/- waterfront.
#1235758 **\$359,000**



NEW PRICE

**LONG POND,
MT VERNON:** 300' lake-
front. 12 rm, 5000 sq. ft
home. 4 BR, 4 full bath, 2
half baths. Central
air, deck, furniture incl.
#1265730 **\$990,000**

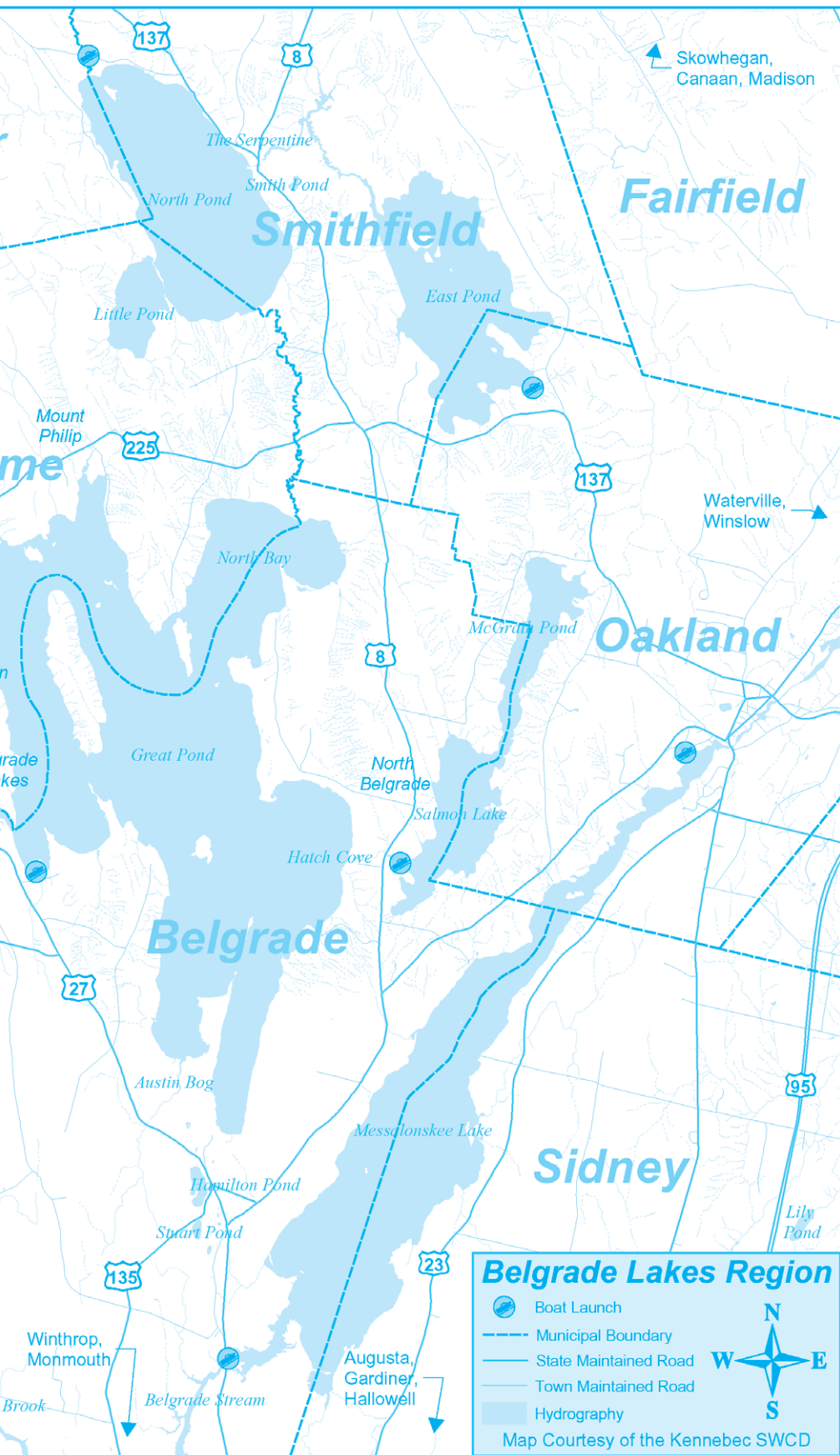


**LONG POND,
MT VERNON:** 200'
Lakefront on 2.16 acres.
Soils tested for 6-bedroom
home. Surveyed, level
building lot. #1259551
\$229,500



BELGRADE: Great 3 BR,
1.5 BA Log Home on 5.2
acres. Incl glassed-in
porch, decks, 2 car garage.
Close to Belgrade Lakes
Village. #1268456
\$189,000

221 Main Street, Belgrade Lakes, Maine 04918



Visit the Businesses on Marina Drive

sadiesboathouse@hotmail.com

• 207-495-4045 •

Like us on Facebook!

Open Friday & Saturday

from 5 PM – 9 PM



Family Fun Days BOAT RENTALS



GREAT POND MARINA
INCORPORATED
O'Brien Water-Sports Pro Shop

**Don't Be Left
Standing On
The Dock**

**Call for
Reservations:
495-2213**

www.greatpondmarina.com
Belgrade Lakes

Open Every Day 8-5

ShoreStation®

The original since 1959

Why Shore Station?
Docks & Boat Lifts
Dependable, Rugged.

Docks = Stability
A-frame stance handles
a 6,000lb boat

Boat Lifts 1,500 to 15,000 lbs.

Shoreland'r Trailers

Brown Dock Services

www.browndockservices.com

George: 495.2600 Jason: 316.7514

Display Docks & Lifts at Great Pond Marina



ShoreStation® The original since 1959

Clark Marine

Manchester - Monmouth - Belgrade

We Service
Honda, Mercury, Evinrude,
and Yamaha Motors

Keeping You On The Water!

207-622-7011

57 Puddledock Rd.
Manchester, Me.



Check-Out Our
New Boats



www.ClarkMarineMaine.com

G & L CONTRACTING

- New Construction
- Additions
- Dock Installations
- Construction

www.gandlcontractingmaine.com

207-495-9009

Lakeside Cottage Rentals



**Exclusive
Lakeside
Rentals in the
Belgrade
Lakes Region**

Located off Rt 27 in Belgrade Lakes

(207) 495-4046

www.LCRentals.com

Waterfront Property Owners

We offer full service rental management services. Please
call if you are interested in having us manage your home.



— Upcoming —

AUGUST

• On Saturday, August 26, a Bearnstow Residents Concert will be held at 7:30 pm at the Union Hall in Vienna. 293-2280

• The Waterville Police Department Charity Golf Tournament will be held on Monday, August 29 at the Waterville Country Club. The proceeds will benefit Waterville's High Hopes Club House. 680-4700

• The "State of the Bats" will be presented by Logan Parker on Tuesday, August 30 at 6:30 pm at the Maine Lakes Resource Center, Main Street, Belgrade Lakes. 495-3617

SEPTEMBER

• A Mainely Hunters and Jumpers Horse Show is scheduled for September 2-4 at Skowhegan Fairgrounds. Free admission, open to public, covered arena. 532-3268

• Main Street Skowhegan will host the first annual Skowhegan Craft Brew Festival on Saturday, September 3, 2-7 pm. 612-2571

• The 9th Annual 5K Race for the Lakes sponsored by the Belgrade Regional Conservation Alliance will be held on Saturday, September 3 at 8 am at Camp Runoia, Point Road, Belgrade. 495-6039

• Saturday, September 10 is Cancer Survivors Day. Join MaineGeneral for a day of Celebration, Education & Networking at the Harold Alfond Center for Cancer Care, 361 Old Belgrade Road, August, 1-5 pm. 626-4858

• A public chicken barbecue and yard sale will be held Saturday, September 10 at the Masonic Lodge, 60 Gordon Hill Road, Thorndike, 11:30 am until gone. \$8 per person. 948-2455

• "French Canadian Immigrants" by Rachel Desgrosseilliers will be hosted by the Belgrade Historical Society on Thursday, September 15 at the Maine Lakes Resource Center in Belgrade Lakes at 7:30 pm. 495-2310

• The Theater at Monmouth will present its fall play "Boeing Boeing," a comedy set in Paris in the 1960s, September 15-25. September 15 is Monmouth Night, \$10 tickets for residents. 933-9999

• A rummage sale at the Wayne Community Church will be held on Saturday, September 17, 8 am-1 pm and Sunday, September 18, 10:30 am to 12:30 pm. 585-3505

• On Saturday, September 17, 10 am-4 pm, celebrate the 101st anniversary of the Pond! at the L.C. Bates Museum in Hinckley with 101 Things at the Pond Day! 238-4250

• Debbie Myers and Friends 7th Annual Maine's Homeless Veterans Benefit Concert will be held Sunday, September 18 at 12 noon at the Augusta Civic Center. 626-2400

• The 23rd Annual Rise 'N Shine 5K Road Race is scheduled for Friday, September 23 at 6:28 am, beginning and ending at the KSYMCA, 31 Union Street, Augusta. 622-9622

• Saturday, September 24 is Smithsonian Museum Day, with museums throughout the state open with special admission and programs. 238-4250

OCTOBER

• Fryeburg Fair will run from Sunday, October 2 through Sunday, October 9, featuring exhibition halls, farm museum, giant midway, kiddie midway, sheepdog show, pulling events, food booths and much more. www.fryeburgfair.org

• The Maine International Conference on the Arts, 2016 - to further develop Maine's creative communities - will be held at multiple locations in the city of Lewiston, Thursday and

Continued on page 13...

FINE ART & CRAFT

AUGUST 27, 2016
9:30 am to 4:00 pm
Manchester, ME
Longfellow's Greenhouse

Maine Mystery Writers • Children's Book Authors
Light Lunch • Live Music

A suggested \$2 donation at the entrance and profits derived from food sales will benefit the Sexual Assault Crisis and Support Center in Winthrop

designing women

DON'T WAIT UNTIL NEXT SPRING!

Schedule boat top, cover and seat repair work for the **OFF SEASON**. Some items can be left with us all winter for **SPRING DELIVERY!**

Repairs & Alterations Welcome! Call Now for more information

ATTENTION BOAT OWNERS
Tops, Covers & Interiors for Boats

WATERVILLE UPHOLSTERY & CANVAS
watervilleupholstery.com

1-1/2 Miles West, Exit 127, I-95,
Kennedy Memorial Drive, Oakland • 465 - 7847

BEDSIDE MANOR

ALZHEIMER'S CARE FACILITY

Providing a quality of care that is second to none

MAKING EVERY DAY SPECIAL

- 24-Hour Alzheimer's and Dementia Care
- Respite Care *(based on availability)*
- Adult Day Service *(based on availability)*
- Private, Secure, Non-institutional
- Creative Activities
- Occasional Outings
- Salon Service
- Compassionate Staff

461 Belgrade Road, Oakland, ME 04963
(207) 465-2527

210 Country Club Road, Oakland, ME 04963
(207) 465-8382

Find Us On Facebook www.bedsidemanorcare.com



—Conservation Too—

More about Local Agriculture

By Dale Finseth

As mentioned a couple weeks ago, Kennebec County still has a great deal of farming and forestry within its territory. As you travel around the most frequent examples may be the farm stands and farmers' markets along the roadways. But there is much more going on behind the scenes.

The farmers' markets represent acres of cultivated ground used to produce vegetables and small fruits. Many of those markets and farm-stands will begin offering the local fruit which will become available in the coming months. Kennebec still has a number of active orchards in addition to small orchards used by market gardeners. In addition to fresh food, many of the markets also provide processed fruits and vegetables, dairy products and even local meat. If you know where to look, the options may be right in your own neighborhood. Search them out and give them a try. For those using the internet, check www.GetRealGetMaine.com and search for sites in your area where you can buy from a local farmer. You can certainly take advantage of the many farmers' markets and farm stands scattered around Kennebec County.

.... Continued from page 12

Friday, October 6-7. 287-2724

- The Kennebec Valley Chamber of Commerce Business-To-Business EXPO will be on Wednesday, October 12, 4-7 pm in the main hall of the Augusta Civic Center. 623-4559

- The last 2016 Mt. Philip Grange monthly bean supper is scheduled for Saturday, October 15, at the grange hall, Routes 27 and 225, Rome.

- "Allagash Tails & Tales" will be presented on Friday, October 21 by outdoorsman Tim Caverly, with music and scenic and historic photographs, at 2 and 7 pm at the Sawyer Foundation in Greene. 946-5311



If most of your food shopping is only in the larger grocery store, check out which products are actually produced right here in Maine. Many stores now identify "locally grown" products from fruits and vegetables to local preserves, baked goods, meat and seafood, craft beers and wines. There are many enjoyable ways to support the effort to "eat local."

The primary arguments made in favor of eating locally are fresher food and knowing where your food comes from. Depending upon how that food is produced and transported, it may also have a smaller carbon footprint. Perhaps the best reason is that you can actually talk to the person who had a hand [literally] in the production of that food you purchase and consume. When was the last time you had a chance to talk to the person who picked or produced that chicken nugget you had for lunch? I suppose you may know the person who drove the delivery truck....

A local orchard operator refers to how many gallons of gasoline it takes to get a bushel of California apples to your store instead of the ones from her orchard. Food on our dinner plate has traveled thousands of miles on average in order to finally get to our plate. That's a lot of hydrocarbons and a lot of time that could be spent ripening in the field rather than traveling on the road. It seems inconsistent that our food must travel such a distance to get to us when we may be able to purchase it from our neighbor and know exactly how it got to our plate. It may have traveled less than ten miles.

While local "winter products" are more limited, many local farmers are extending their seasons. In addition, we have local areas working to become "local food hubs" by supporting local processing plants. Gardiner now has a local slaughter house for locally produced meats. You may need to plan your menus around what is available not what you may be craving at the

moment. Having watermelon for New Year's is not usually a realistic option.

It doesn't mean a total ban on your favorites. Even the Romans were willing to pay the price for something they called "ice cream." Just rethink some of your choices and give preference to foods that were grown or produced within 100 miles. There are far more choices than you may realize. Use the internet and look for "local foods in Maine." Keep your eyes open as you drive around. There are lots of options.

And remember to visit a large working dairy farm at Maine Farm Days on August 24 & 25. Clinton is just a short drive. Demos will also include a small woodlot with attendant foresters.

Plan to visit for any part of the two days. Come and join us anytime from 9 a.m. until 4 p.m. Bring your family and friends and stay as long as you want. If you are there for lunch there is food available. Check out more information at their website www.mainefarmdays.com or our website at www.kcswwd.org and select the Maine Farm Days tab.



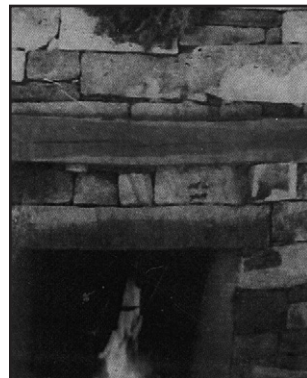
For information about any of our conservation projects please contact Dale Finseth at 622-7847, x 3 or check our website at www.kcswwd.org



Private getaway w/
views of Long Pond &
nearby access.
Many new updates.
Has well & septic.
\$143,500

Les Priest
207-215-7349
Les@LesPriest.com

Better Homes
and Gardens
REAL ESTATE
THE MASIELLO GROUP



Masonry

Fireplaces • Stonework
Chimneys • Waterproofing
Chimney Inspection
Restoration • Chimney Liner

Alan Berube
213-8815
Sidney, Maine

**Visit Us for
All Your
Local Foods!**

**Fresh Veggies • Bakery •
Milk • Eggs • Beer • Wine & More**
Open Monday-Friday 9-5 • Saturday 9-4
318 Readfield Rd. (Rt. 17), Manchester
207 622 2479

Specializing In

CAMP JACKING AND LEVELING

John Webster
32 Webster Way
Belgrade, ME 04917

Sill Replacement
Retaining Walls

(207) 495-2965
35+ Years Experience

GENERATORS of MAINE
495-2285

Doug Sawyer, Owner
Cell: 207-215-0617
doug@generatorsofmaine.com
www.generatorsofmaine.com
262 Augusta Road • Belgrade, Maine

KOHLER Generators
Authorized Dealer

Call Us For Boat Tops, Covers & Interiors

Keep You and Your Boat Clean & Dry

Protect the Interior
Repairs & Alterations
Welcome!

Pontoon Boats Too!

WATERVILLE UPHOLSTERY & CANVAS
(watervilleupholstery@outlook.com)

1 1/2 Miles West Exit 127, I-95, KMD, Oakland
465-7847

VISA MasterCard

**Bear Spring
Camps**

- Waterfront cottages
- Home-style meals
- Bass, pike, and brown-trout fishing
- Boats, motors, docks
- Sandy beach
- 3.5 hours from Boston
- May-September

on Great Pond in the
Belgrade Lakes Region
www.bearspringcamps.com
207-397-2341



BELGRADE REGIONAL HEALTH CENTER

*New Patients
of All Ages
Welcome*

4 Clement Way, Belgrade
207-495-3323 | BelgradeCHC.org



**ALDEN
CAMPS**
Est. 1911



• **Lobster Bakes on Friday nights by Reservation**
• Lakeside Cottages • Boats & Motors
• Full American Plan
• **Dining on the Porch by reservation**
Saturday through Wednesday

3 Alden Camps Cove
Oakland, Me 04963
(207-465-7703)

E-mail: info@aldencamps.com • Website: www.aldencamps.com



BOOKS, PUZZLES, TOYS, GAMES

A store for children of all ages,
the young and the young at heart.

Open Monday 12 to 5 • Tues. - Sat. 9 to 5
52 Main St. Waterville 872-4543

DAVID STEVENS
Excavation & Septic Systems



LOAM GRAVEL SAND

465-3815
Cell: 314-0314

P.O. Box 146 • Belgrade, Maine 04917

CASTLE ISLAND CAMPS

Boats, Bait,
Tackle, Gas,
Kayaks



Boats, Daily or
Weekly

495-3312
Rentals for
Long Pond Only

David J. Auclair
www.auclaircycle.com

**AUCLAIR
CYCLE & SKI**

64-66 BANGOR ST. AUGUSTA, ME 04330
623-4351 / 800-734-7171 • Fast Professional Service
Bicycles • Skateboards • Roof Racks • Rentals

NEW ESTATE JEWELRY.

L. TARDIF
62 Main Street



JEWELER
Waterville, Me.

Tues - Sat

est. 1935

9 - 5

— Accommodations —

Alden Camps, lakeside cottages on East Pond, established 1911, American Plan meals, boat and motor rentals, dining and lobster bake open to public by reservation, 3 Alden Camps Cove, Oakland, 465-7703, www.aldencamps.com

Bear Spring Camps, waterfront cottages on Great Pond, home-style meals, sandy beach, boats, motors, docks, 60 Jamaica Point Road, Rome, 397-2341, www.bearspringcamps.com

Castle Island Camps, cottages on the water, Long Pond, American Plan meals, boat and kayak rentals, Castle Island Road, Belgrade Lakes, 495-3312, www.castleislandcamps.com

Whisperwood Cottages, overlooking Salmon Lake, American Plan

meals, fishing boat rentals, open to the public for dining by reservation only, 103 Taylor Woods Road, North Belgrade, 465-3983, www.whisperwoodlodge.com

Wings Hill Inn, historic Inn & Restaurant, casually elegant accommodations, centrally located in Belgrade Lakes Village, Route 27, Belgrade Lakes, 495-2400, 866-495-2400, www.wingshillinn.com

Belgrade Vacation Rentals, lakeside camp and cottage rentals throughout the area, long and short stays, many size accommodations and rates, 81 Main Street, downtown Belgrade Lakes, 495-4011, www.belgradevacationrentals.com

Lakeside Cottage Rentals, featuring over 70 private homes, 24/7 customer friendly service, 25 Marina Drive, Belgrade Lakes, 592-5577, 495-4046, www.lcrentals.com



— Notebook —

Maine Farm Days Great For Families

• Maine Farms Days on Wednesday and Thursday, August 24 and 25, 9 am-4 pm each day, is a perfect opportunity for the public to visit a working farm, learn about the different areas of agriculture, eat good food, take wagon tours through the fields and barns, follow a Corn Maze, and let children discover and enjoy a special Learning Center. Held at Misty Meadows Farm on Hill Road in Clinton, Maine Farm days is completely free and family-friendly. Just follow the signs. www.MaineFarmDays.com

State Drought Task Force

• The Maine Drought Task Force, which assists in monitoring, coordinating and managing responses to droughts and recommends what actions to take, convened in August for the first time in 14 years. The National Weather Service reports precipitation levels down for the last six months and dry weather conditions are expected to continue with a dry fall and another low snowfall this winter. Consumers should be alert to possible water restrictions.

Camp Ray of Hope

• Camp Ray of Hope - a unique state wide retreat for grieving families is now accepting registrations for the 2016 fall session which runs September 23-25 at Pine Tree Camp in Rome. The retreat provides support to families with dependent children ages 3-18 years and young adults 18-25. The overnight cost is \$60 per person or \$180 for a family of three or more. Day rates are available. Registration is required. Scholarships are available. 873-3615, ext. 19

Augusta

• The 14th season of "Concerts at Jewett" sponsored by the University of Maine at Augusta College of Arts and Sciences and UMA Senior College will begin on Sunday, October 16 at 2 pm with "Fiddle-icious," a multi-generational orchestra from across Maine, preserving the cultural heritage of Maine, French and Canadian fiddle music and step-dancing. The performance will be at Cony High School, 60 Pierce Drive. 621-3551

Belgrade

• The 81st Annual Meeting of the Belgrade High School Alumni Association (BHSAA) held in June included representatives from classes of 1933 to 2008. Two dedicated officers were honored: Lynn Farnham '69 and Leigh Bickford Norton '75. Each

year the BHSAA Scholarship Program recognizes an outstanding Belgrade graduate at Messalonskee High School. In 2016 five of the top ten graduates were from Belgrade and the BHSAA was proudly awarded to Top Student, Jackson "Jack" Bernatchez, son of Brian and Amy Bernatchez of Belgrade. Every student in the Belgrade school system is encouraged to join BHSAA. 239-0975

Hallowell

• Call for Artists and Farmers for CSA II: Community Supporting Arts. Matching artists and farms, two vibrant and idealistic groups that are key to our state's unique sense of place, CSA II will take place over the course of the 2017 growing season to inspire works based on the artists' experiences and observations on the farm. Art exhibitions and related events will take place in the fall. The application deadline is 11 pm on September 1. 622-3813

Litchfield

• Don't miss the music, the setting, the fun. Join the Blistered Fingers Family Bluegrass Music Festival August 24-27 at the Litchfield Fairgrounds and enjoy a dozen bands from seven states, field strumming 24 hours a day, food concessions, camping. Children 16 and under free with adult. On stage entertainment 5-10 pm Wednesday and Thursday, 10 am-10 pm Friday and Saturday, 10-11 am Gospel Sing Sunday. blis-f@blisteredfingers.com, www.blisteredfingers.com, 873-6539.

Rome

• The Mt. Philip Grange #545 will hold the final two 2014 Monthly Bean Suppahs on Saturday, September 20 and October 18. September's proceeds will be used to give dictionaries to all the 3rd grade students in Rome, Belgrade, Sidney and Oakland as part of the "Words For Thirds" program. The meal includes all you can eat 3 kinds of beans, American Chop Suey, hot dogs, coleslaw, bread, pies and beverage; adults \$7, under 5 free, family of 4 or more \$20.

Skowhegan

• The New Balance Family 5K will be held on Saturday, August 27 at the New Balance Factory Store, 12 Walnut Street. Registration begins at 8 am. The proceeds from this event will help provide school supplies and holiday gifts to children in foster, adoptive and kinship care. In 2015, Adoptive and Foster Families of Maine, Inc and The Kinship Program received over 900 requests for holiday gifts and 250 requests for a backpack and school supplies. More requests are expected this year. 1-800-833-9786





Dining

Augusta

• **Riverfront Barbeque & Grille and Gin Mill Lounge**, world class barbeque, seafood, pasta and vegetarian entrees, full service dining, catering, bulk take out, 300 Water Street, Augusta, www.riverfrontbbq.com, 622-8899

Belgrade

• **Pete's Pig**, 81 Main Street, sandwiches and platters for picnic-style eating on the premises or to go, also offering a full range of catering, Main Street, Belgrade Lakes Village, 495-4095, www.petespig.com

• **Sadie's Boathouse Restaurant at Great Pond Marina**, hearty contemporary American fare, 25 Marina Drive, Belgrade Lakes, 495-4045, 242-1273

• **Spiro & Company**, gourmet Greek food, Main Street, Belgrade Lakes Village, www.spiroandcompany.com, 441-2103

• **The Village Inn and Tavern**, 157 Main Street, Route 27, Belgrade Lakes Village, 495-3553, www.villageinnandtavern.com

• **Whisperwood Lodge and Cottages**, Salmon Lake/McGrath Pond, homestyle cooking, traditional fishing camp diningroom, open to the public by reservation only, 103 Taylor Woods Road, Belgrade, 465-3983, www.whisperwoodlodge.com

• **Wings Hill Inn and Restaurant**, gourmet fine dining in historic inn, daily culinary chef's specialties, Route 27/Main Street, Belgrade Lakes Village, www.wingshillinn.com, 495-2400 or 800-495-2400,

• **Winterberry Farm Café**, homemade treats, pie, cookies, granola bars, grilled organic cheese sandwiches, veggies, drinks, Route 27, Belgrade, 649-3331

Manchester

• **Lakeside Orchards**, bakery, veggies, dairy products, drinks, 318 Readfield Road, Route 17, Manchester, 622-2479

Oakland

• **Alden Camps**, lunch or dinner by reservation Saturday-Wednesday space permitting, lobster bakes on Friday night by reservation, 3 Alden Camps Cove, Oakland, www.aldencamps.com, 465-7703

• **Riverside Farm Restaurant & Wine Market**, simple, wholesome food and drink since 1990, 291 Fairfield Street, Oakland, www.riversidefarmmarket.com, 465-4439

Oakland-Wines & Spirits

• **Tree Spirits**, tasting room for award winning wines and spirits made from local apples, pears and maple syrup, tours available, 152 Fairfield Street, Oakland, www.treespiritsofmaine.com

Smithfield

• **Smithfield Ice Cream Place**, lunch, dinner and dessert, 855 Village Road, smithfieldicecreamplace.com, 368-5039

Inland Hospital's LET'S GO

Inland Hospital kicks off its 5th, year-long LET'S GO! Family Fun Series on Saturday, September 17. The LET'S GO! Celebration and Family Fun Walk will take place at the North Street Playground in Waterville between 1 and 3pm.

This free, family-friendly event will include interactive booths promoting the 5-2-1-0 healthy habits, a family walk featuring a "musical petting zoo" and other activities along the Messalonskee Stream, a climbing wall, games, healthy snacks, prizes, giveaways, and more. Inland Hospital's popular LET'S GO! Family Fun Series wraps up its 4th year-long series of monthly events in August with nearly 400 families exploring new places and fun ways to be active together – from warm weather activities like kite flying, biking,

and hiking, to all things winter including snowshoeing, cross-country skiing, sledding, and winter biking. The 2015-2016 series also coordinated local events with state-wide annual happenings like Open Farm Day and Great Maine Outdoor Weekend.

The LET'S GO! Celebration and Family Fun Walk on September 17 will launch a new series of free monthly events for the 2016-2017 Family Fun Series that includes annual favorites like Healthy Kids Day and features new collaborative events including a Move More Kids Day and the Quarry Road Trails Fall Festival.

Collaborating partners for the program include the Alford Youth Center and Waterville Parks & Recreation with LET'S GO! Somerset, Waterville Creates!, Kiwanis, and many other organizations and volunteers joining Inland to link families to free and low cost activities that encourage life-long healthy habits.

For more information like Inland's Facebook page, visit inlandhospital.org, or call 861-3292.

Jeannie G., LMT

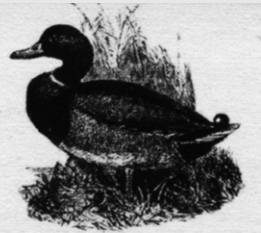
Licensed Massage Therapist

120 Drummond Avenue, Suite 1
Waterville, Maine 04901

Phone: **207-509-1251**

Veteran, Student, Loyalty and Referral Discounts

An essential component of Self-care, massage therapy improves heart rate, blood pressure, circulation and decreases stress levels thereby improving one's well-being. Call for flexible scheduling, Monday through Saturday.
Member AMTA



157 Main Street/RT 27
Belgrade Lakes, Maine 04918

villageinnandtavern@gmail.com

207.495.3553

www.villageinnandtavern.com

THE
VILLAGE INN
AND TAVERN
Belgrade Lakes, Maine
SINCE 1921



Fayette – David Pond – Immaculate custom 4 bedroom/3 bath lake-front Ranch with walkout basement on tranquil and pristine David Pond. Open floor plan with hardwood floors, Anderson windows, Cherry cabinets, granite and stainless kitchen, radiant heat, ductless A/C, security system, 12 kva generator, oversized garage, screen porch, 3.8 acres, 201' frontage. **\$473,000**. Adjoining 3.1 waterfront lot also available for only **\$125,000**.

Call Brian Rizzo at Rizzo Mattson, Realtors
RE/MAX



219 Capitol St., Augusta 622-9000 ~ 215-9793
brizzo@rizzomattson.com

Fishing Boat Rentals on Salmon Lake & McGrath Pond

Located on the South end of Salmon Lake in North Belgrade

Now open to the Public for Dining by reservation only. 465-3983

Breakfast 8:am - 9:am, Dinner served at 5:pm
Daily menu listed on our website
Boat docking available for Lake Residents

www.whisperwoodlodge.com

WINTERBERRYFARMSTAND.COM

Route 27, Belgrade
207.649.3331

FARM TOURS

Family-friendly tours of our horse and oxen powered farm
Call to reserve time for your tour or stop by chance

Belgrade's working family farm

FARMSTORE & CAFÉ
Open 7 days a week, 9am - 6pm
Featuring all-organic products grown and produced here on the farm.
3 miles south of Belgrade Lakes Village on route 27.

F. A. Rizzo Appraisal Company

Frank Rizzo

Consultant/Appraiser

Estate Appraisal & Planning

Certified Residential cr709

tel. (207) 495-3365

cell (207) 458-4916

farizzo@roadrunner.com



Since 1992



- Corporate Functions
 - Weddings & Rehearsals
 - Special Events
- Call (877) 860-1503
(207) 495-4095

www.petespig.com

Maple Leaf Self Storage

Belgrade Me - 3.3 mi off Rte 27 on Route 135

495-2191

Various size units
Owners live on site



Boat / Auto Storage
By foot or unit

The Ice Cream Place

855 Village Road, Smithfield, ME

Across from the Post Office

362-5039 • Open 11am-9pm

smithfieldicecreamplace.com



Ice Cream



Sub Rolls



Pizza

Lobster Rolls

Accessible by Boat from East Pond



-Business Directory-

ACCOMMODATIONS

See page 18

ART

Colby College Museum of Art, 5600 Mayflower Hill, Waterville, 859-4000, www.colby.edu/museum/

BANKING

Kennebec Savings Bank, 150 State Street, Augusta, 622-5801, www.kennebecsavings.com

Maine State Credit Union, 200 Capitol Street, Augusta, 623-1851, www.mainestatecu.org

Skowhegan Savings Bank, 450 Civic Center Drive, Route 27, Augusta, 1-800-303-9511, 623-2300, www.skowsavings.com

BEVERAGES

Tree Spirits, 152 Fairfield St, Oakland, 861-2723, www.treespiritsofmaine.com

BICYCLES

Auclair Cycle & Ski, 64 Bangor St, Augusta, 623-4351, www.auclaircycle.com

BOAT COVERS

Waterville Upholstery & Canvas, 1042 Kennedy Memorial Dr, Oakland, 465-7847, www.watervilleupholstery.com

BOAT LIFTS

Brown Dock Service, Marina Drive, Route 27, Belgrade Lakes, 495-2600, 316-7514, www.browndockservices.com

Hammond Lumber Company, Auburn, Bangor, Belgrade, Boothbay Harbor, Brunswick, Damariscotta, Fairfield, Farmington, Greenville, Pemaquid, Portland, Skowhegan, Wilton, 1 866-HAMMOND, www.hammondlumber.com

BOAT MOORINGS

Great Pond Marina. 25 Marina Drive, Route 27, Belgrade Lakes, 495-2213, www.greatpondmarina.com

BOAT RENTALS

Belgrade Canoe & Kayak, canoes, kayaks and paddleboards, 1005 Augusta Road, Route 27, Belgrade, 495-2000, www.kayakandcanoe.com

Castle Island Camps, Long Pond, 441 Castle Island Road, Belgrade Lakes, 495-3312, www.castleislandcamps.com

Great Pond Marina, 25 Marina Drive, Route 27, Belgrade Lakes, 495-2213, www.greatpondmarina.com

Whisperwood Cottages, Salmon Lake/McGrath Pond, 103 Taylor Woods Road, Belgrade, 465-3983, www.whisperwoodlodge.com

BOAT SALES AND SERVICES

Clark Marine, 57 Puddledock Road, Manchester, 622-7011, mail@clarkmarine.biz, funonthewaterstartshere.com

Hamlin's Marine, 290 West River Road, Waterville, 872-5660, www.hamlinsmarine.com

Mid-Maine Marine and RV, 885 Kennedy Memorial

Drive, Oakland, 465-2146, www.midmainemarine.com

BOAT STORAGE

Belgrade Boat Storage, 31 Pinkham's Cove Road, Belgrade, 495-3421, 314-3287, www.belgradeboatstorage.com

Belgrade Lakes Marine and Storage, Inc, 366 Augusta Road, Belgrade, 495-2378, www.belgradelakesmarine.com

Clark Marine, 57 Puddledock Road, Manchester, 622-7011; and Route 202, Monmouth, mail@clarkmarine.biz, funonthewaterstartshere.com

Hamlin's Marine, 290 West River Road, Waterville, 872-5660, www.hamlinsmarine.com

Maple Leaf Self Storage, 688 Manchester Road, Route 135, Belgrade, 495-2191, 441-5529

Mid-Maine Marine, 885 Kennedy Memorial Drive, Oakland, 465-2146, www.midmainemarine.com

BOOKS

Children's Book Cellar, 52 Main Street, Waterville, 872-4543, childrensbookcellar.com

BUILDERS

Craig's Carpentry/North Bay Estates, Route 8, North Belgrade, Craig Alexander, 649-3749

G&L Contracting, 116 Lakeshore Drive, Belgrade Lakes, 215-7951, 495-2325, 233-7408, gandlcontractingmaine.com

LakeHouse Design, Build, Renovations, 17 Birchwood Road, Augusta, 242-3663, www.lakehousedesignbuild.com

John Webster, jacking, raising, 32 Webster Way, Belgrade, 495-2965

BUILDING MATERIALS

Hammond Lumber Company, Auburn, Bangor, Belgrade, Boothbay Harbor, Brunswick, Damariscotta, Fairfield, Farmington, Greenville, Pemaquid, Portland, Skowhegan, Wilton, 866-HAMMOND, www.hammondlumber.com

COMPUTER CONSULTANTS

Macintosh Solutions, Michael Breault, 24 Welch Road, Wilton, 645-5083, cell 578-0226, www.michaelbreault.net

DEMENTIA/ALZHEIMER'S CARE

Bedside Manor, Alzheimer's Care Facility, 461 Belgrade Road and 210 Country Club Road, Oakland, 465-2527, 465-8382, www.bedsidemanorcare.com

DINING

See Directory on page 15

DOCKS

Brown's Dock Services at Great Pond Marina, 495-2600, 316-7514, www.browndockservices.com

G&L Contracting, 116 Lakeshore Drive, Belgrade Lakes, 495-2325, 215-7951, 233-7408, gandlcontractingmaine.com

Hammond Lumber Company, Auburn, Bangor, Belgrade, Boothbay Harbor, Brunswick, Damariscotta, Fairfield, Farmington, Greenville, Pemaquid, Portland, Skowhegan, Wilton, 866-HAMMOND, www.hammondlumber.com

ELDER CARE

Maine-ly Elder Care, 28 Center Street, Oakland, 465-3249, www.maine-lyeldercare.com

ENGINEERING

Thayer Engineering, septic design, storm water mitigation, permitting, 17 Hasson Street, Farmingdale, 582-7762, www.thayereng.com

ESTATE APPRAISALS

F.A. Rizzo Appraisal Company, estate appraisal and planning for real estate, 495-3365, 458-4916, farizzo@roadrunner.com

EXCAVATING

Belgrade Boat Storage, 31 Pinkham's Cove Road, Belgrade, 495-3421, 314-3287, belgradeboatrentals.com

David Stevens, P0 Box 146, Belgrade, 465-3815, cell 314-0314

EYE CARE

Eye Care of Maine, 325 E. Kennedy Memorial Drive, Waterville, 873-2731, 1-800-660-3403, www.Maine2020.com

FARMSTANDS

Lakeside Orchards, 318 Readfield Road, Route 17, Manchester, 622-2479

Winterberry Farm, 538 Augusta Road, Route 27, Belgrade, 495-2593, 649-3331, www.winterberryfarmstand.com

FINANCIAL PLANNING

Golden Pond Wealth Management, 129 Silver Street, Waterville, 873-2200, www.goldenpondwealth.com

FIREWOOD

J & M Logging, Inc. 853 Civic Center Drive, Augusta, 622-6353, www.jmlogginginc.com

FLOORING

Hammond Lumber Company, Auburn, Bangor, Belgrade, Boothbay, Brunswick, Damariscotta, Fairfield, Farmington, Greenville, Pemaquid, Portland, Skowhegan, Wilton, 866-HAMMOND, www.hammondlumber.com

GENERATORS

Generators of Maine, 262 Augusta Road, Belgrade, 495-2285, www.generatorsofmaine.com

GOLF

Natanis Golf Course. 735 Webber Pond Road, Vassalboro, 622-3561, www.natanisgc.com

HEALTH CENTERS

Belgrade Regional Health Center, 4 Clement Way, Belgrade Lakes, 495-3323, www.healthreachchc.org, belgradechc.org

Inland Hospital, 200 Kennedy Memorial Drive, Waterville, 861-3000, 1-800-491-8600, www.inlandhospital.org

MaineGeneral Medical Center, Alfond Center for Health, 35 Medical Center Parkway, Augusta; Thayer Center for



Health, 149 North Street, Waterville,
1-855-4463, www.mainegeneral.org

HOME HEALTH CARE

Assistance Plus, 1-800-781-0070 ext. 400,
www.assistanceplus.com

ICE CREAM

Smithfield Ice Cream Place, 855 Village Road,
smithfieldicecreamplace.com, 368-5039

JEWELRY

Larsen’s Jewelers, 57 Main Street, Waterville, 872-6301, 1-800-697-1874, www.larsensjewelers.com
L.Tardif Jeweler, 62 Main Street, Waterville, 872-7542, 1-800-834-3638, ltardiffjewelers.com

KITCHENS

Hammond Lumber Company, Auburn, Bangor, Belgrade, Boothbay, Brunswick, Damariscotta, Fairfield, Farmington, Greenville, Pemaquid, Portland, Skowhegan, Wilton, 866-HAMMOND,
www.hammondlumber.com

LAKE ASSOCIATIONS

Belgrade Lakes Association (BLA), Long Pond and Great Pond, PO Box 551, 137 Main Street, Belgrade Lakes, 512-5150, belgradelakesassociation.org

LANDSCAPING

G&L Contracting, Belgrade Lakes, 215-7951, 495-2325, 233-7408, gandlcontractingmaine.com
Lynch Landscaping, Skowhegan, 474-2420, lynchlandscaping.com

MASONRY

Alan Berube, Sidney, 213-8815

MASSAGE THERAPIST

Jeannie G., 120 Drummond Avenue, Suite 1, Waterville, 509-1251

MOVIE THEATERS

Railroad Square Cinema, call for titles and times, 17 Railroad Square, Waterville, 873-6526,
www.railroadsquarecinema.com

MUSEUMS

Colby College Museum of Art, 5600 Mayflower Hill, Waterville, 859-5600, www.colby.edu/museum/

MUSIC/CONCERTS

Snow Pond Center For The Arts and New England Music Camp, 8 Goldenrod Lane, Sidney, 844-476-6976, www.snowpond.org

ORCHARDS

Lakeside Orchards and Farm Market, 318 Readfield Road, Route 17, Manchester, 622-2479

PHYSICAL THERAPY

Dockside Physical Therapy, 47 Main Street, Belgrade

Lakes, 495-3195, 512-2544, Fax 512-2545

PIANO ENJOYMENT

Diane Gorman, 906 Manchester Road, Belgrade, 495-3222

PLUMBING

Paul Hanna's Plumbing, Belgrade, 495-3805

REAL ESTATE DEVELOPMENTS

North Bay Estates, Belgrade, 649-3749, crgsnbe@yahoo.com

REAL ESTATE

Better Homes and Gardens, The Masiello Group, 207-215-7349, Les@LesPriest.com
Coldwell Banker Rizzo Mattson, 219 Capitol Street, Augusta, 622-9000, www.rizzomattson.com
Day's Real Estate, 262 Augusta Road, Route 27, Belgrade Lakes, 495-3111, 1-888-495-3111, www.daysrealestate.com
Lakepoint Real Estate, 221 Main Street, Belgrade Lakes, 495-3700, www.belgradelakepoint.com
Sprague & Curtis Real Estate, 75 Western Avenue, Augusta, 623-1123, www.spragueandcurtis.com

LODGING RESERVATIONS

See page 14

RESTAURANTS

See Dining Directory on page 15

RETIREMENT COMMUNITIES

Granite Hill Estates, 60 Balsam Drive, Hallowell, 626-7786, 1-888-321-1119, www.granitehillestates.com

SAILING

Crooked Island Sailing, lessons, rentals, deliveries, Peter McManus, Belgrade Lakes, 495-9066,

SCHOOLS

St. Michael School, grades pre-K 3-year-old through 8th, 56 Sewell Street, Augusta, 623-3491, www.smsmaine.org
Snow Pond Arts Academy, 8 Goldenrod Lane, Sidney, 844-476-6976, www.snowpond.org

SECURITY SYSTEMS

Cayer Security Services, Inc, 208 College Avenue, Waterville, 453-9177, www.cayersecurity.com

SELF STORAGE

Maple Leaf Self Storage, 688 Manchester Road., Route 135, Belgrade, 495-2191

SURVEYING

Acme Land Surveying, 108 Fairbanks Road, Suite 5, Farmington, 778-4081, www.acmelandsurveying.com

WINDOWS

Hammond Lumber Company. Auburn, Bangor, Belgrade, Boothbay, Brunswick, Damariscotta, Fairfield, Farmington, Greenville, Pemaquid, Portland, Skowhegan, Wilton, 1-866-HAMMOND, www.hammondlumber.com

ASSOCIATIONS/GROUPS

THE BELGRADES...

- East Pond Association, Smithfield/Oakland, www.eastpond.org
- North Pond Association, Smithfield/Rome/Mercer, www.northpond.net
- McGrath Pond/Salmon Lake Association (MPSL), Belgrade/Oakland, P.O. Box 576, Oakland, 04963, 873-5285, www.mcgrathpond-salmonlake.org
- Belgrade Lakes Association (BLA) for Great Pond and Long Pond, Belgrade/Rome/Mount Vernon, PO Box 551, 137 Main Street, Belgrade Lakes, 04918, 512-5150, www.belgradelakesassociation.org
- Friends of Messalonskee, Oakland/Belgrade/Sidney, PO Box 532, Oakland, 04963, 465-4622, www.friendsofmessalonskee.com
- Belgrade Regional Conservation Alliance and BRCA Conservation Corps, PO Box 250, 137 Main Street, Belgrade Lakes, 04918, 495-6039, www.belgradelakes.org
- Belgrade Lakes Region Business Group (BLRBG), PO Box 596, Belgrade Lakes, 04918, 495-3700, www.belgradelakesmaine.com
- Maine Lakes Resource Center/Docks to Doorways, PO Box 431, 137 Main Street, Belgrade Lakes, 04918, 495-3617, 620-6029, www.mainelakesresourcecenter.org

BEYOND...

- Friends of the Cobbossee Watershed, PO Box 5003, Augusta, 04332-5003, 621-4100, www.watershed-friends.com
- Franklin County Soil & Water Conservation District, 107 Park Street, Farmington 04938, 778-4279, www.franklincswcd.org
- Kennebec County Soil & Water Conservation District, 21 Enterprise Drive, Augusta 04330, 622-7847, ext. 3, www.kcswcd.org
- Somerset County Soil & Water Conservation District, 12 High Street, Skowhegan 04976, 474-8324, www.somersetswcd.org
- Kennebec Land Trust (KLT), PO Box 261, 331 Main Street, Winthrop, 04364, 377-2848, www.tkl.org
- Kennebec Messalonskee Trails, PO Box 2388, Waterville, 04903, 873-6443, www.kmtrails.org
- Kennebec River Rail Trail, PO Box 2195, Augusta, 04338, 623-8162, www.krrt.org
- 30 Mile River Watershed Association (30 MRWA), Kimball Pond in Vienna to the Androscoggin River, PO Box 132, Mt Vernon, 04352, 685-4956, www.30mileriver.org
- Maine Lakes Society, formerly Congress of Lake Associations, PO Box 447, 137 Main Street, Belgrade Lakes, 04918, 1-855-463-2652
- Central Maine chapter of the New England Mountain Bike Association (CeMeNEMBA), 441-6227, www.cemenemba.org



Succesful Season for GP Yacht Club

The Great Pond Yacht Club is wrapping up a third successful season of youth sailing classes on Great Pond at the Belgrade Center for all Seasons. The Great Pond Yacht Club has partnered with SailMaine, the premier sailing organization in Portland, to offer classes for 8-17 year olds. From beginners to intermediate sailers, the program provides a solid foundation of sailing skills that will hopefully instill a lifelong passion for sailing and greater appreciation of our beautiful lakes.

The morning program for young sailers introduces the basics of sailing and focuses on improving a child's comfort and confidence in small sailboats. Beginner classes for 8-12 year olds use Optimist dinghies, small, single-handed sailboats. The afternoon program classes for 12-17 year olds offers instruction for both beginner and intermediate sailers and features 420 double-handed dinghies.

The Great Pond Yacht Club and all the families who have participated in the program would like to give a special shout out to Barb and Ben Ford who have so graciously and generously hosted the SailMaine instructors for a month each of the past three summers at their home on Great Pond. This is on top of much additional work they do on behalf of the program. Many thanks!!!

The Great Pond Yacht Club welcomes both avid



and novice sailers. We have scheduled monthly races on Great Pond, followed by informal and festive get-togethers. Membership is NOT required for participation in the youth sailing program.

For additional information, refer to greatpondyachtclub.com, sailmaine.org, or call SailMaine at 207-772-7245. We look forward to seeing everyone in the summer of 2017!



This Week's LakeSmart Tip

TURNOUTS



Before turnout

Water standing on camp roads and driveways leads to washouts, muddy conditions, and pot holes. Turnouts return storm water run-off as sheet flow to natural drainage areas. The surrounding vegetation filters and absorbs water and nutrients into the soil, not the lake.

For a free labor contact:

Nathan Durant, Youth Conservation Corps Director,
brcacc@mainelakes.org

Logan Parker, LAKESMART Coordinator,
lparker.mainelakes@gmail.com

Maine Lakes Resource Center 207-495-3617

Sprague & Curtis
Real Estate

spragueandcurtis.com

6 2 3 . 1 1 2 3

75 Western Ave. • Augusta, ME



WINTHROP — Beautiful colonial and fantastic location overlooking Maranacook Lake. Offering 4 bedrooms, lovely updated kitchen w/granite counters, front to back living room w/pellet stove, bonus (family room) over the garage, backyard shed and so much more. Paved drive, new portico and great landscaping. Walking ROW to Maranacook Lake for swimming. Come see! #1259261 \$259,000



JEFFERSON — Fantastic opportunity for yr round waterfront living on this 1.5 acre lot on Clary Lake. 2 BR/2.5 BA plus office. Sunroom w/cathedral ceilings & hot tub room. Spacious family room in the basement w/bar & full BA. Gorgeous views from the screened-in clubhouse w/ outdoor kitchen & built-in countertop. Deck overlooks private front lawn w/ greenhouse, beautiful gardens. 3 car garage w/storage. Quick commute to Togus VA, Augusta, Damariscotta, the coast. #1273705 \$389,000



LITCHFIELD — Contemporary Cape w/panoramic water views & 386' of frontage. Well planned, wrap around cedar deck, & lower level walkout FR w/BA. Boat from Woodbury Pond to Sand to Buker. 3BR, 3BA, updated kitchen w/granite, porcelain tile. Pretty hardwood floors. Quality built-Anderson windows, Redwood siding, generator hookup, woodstove, lots of storage & oversize garage that can fit your boat. Aluminum dock system. Come enjoy the privacy. #1253339 \$419,900



MONMOUTH — Fabulous Cobbossee waterfront property- beautiful home AND cottage included! Immaculate condition, 3-4BR, 3BA, in-law apt, pretty kitchen w/DR, nice landscaping/yard, HUGE heated garage, cottage w/1BR, sandy beach, outdoor fireplace. MUCH MORE, MUST SEE! #1127463 \$429,900



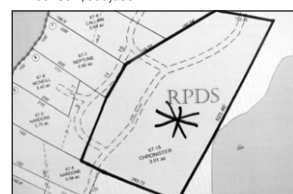
LITCHFIELD — Spectacular custom built home on beautiful Pleasant Pond. Top of the line kitchen w/tray ceilings, arched doorways, LR w/propane fireplace, master suite w/sitting room and elegant bath. Sun-room overlooks the water. Everything beautifully done! Two garages, beautiful landscaping and dock on your own waterfront. Fish, swim or just relax at the lake. You'll never want to leave! #1259483 \$699,900



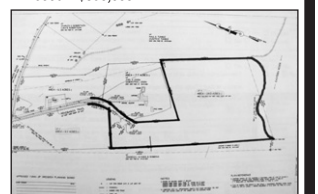
NMANCHESTER — Lakefront living on beautiful Cobbossee Lake. Enjoy all 4 seasons. Offering LR w/brick fireplace, DR, updated kitchen, 3+BR, 2-car garage w/loft, boat slip for easy kayak access and more! Fish, swim, boat or just relax on your own dock. Tremendous views. Westerly facing w/spectacular sunsets. Road well-maintained by road association. 5 miles from Augusta. #1263394 \$890,000



READFIELD — Exceptional 12.3 ac w/1,168' of frontage on spectacular Torsey Pond. Majestic setting, gorgeous grounds, beach. Over 5,500SF of living space, 5+BR, 4.5 BA, 3 fireplaces, 3 car garage. Post & Beam main house w/expansive ell. Fabulous Master BR suite w/ fireplace, deck & views of the water. New custom cook's kitchen w/granite & expansive vaulted FR, authentic library, wine vault, in-law/guest suite. A rare find! #1229231 \$899,000



AUGUSTA-LAND — Lovely 3 acre building lot in quiet wooded area near Togus Pond. Rural, yet convenient to Augusta and I-95. Lake Assoc- Waterfront lot nearby- \$15/yearly dues- swimming, picnicking, boat launch. #1206024 \$24,900



DRESDEN- LAND — arge 24 acre building lot with 996' on the Eastern River. Excellent opportunity. Part of 4 lot subdivision. Adjacent 9.2 acre lot also available. #1247362 \$99,900



Expressions

Country squire Sir Claud Amory has developed a powerful explosive, but the formula is stolen from his safe. Then, with the suspects assembled in a locked room with the lights out, Sir Claud suddenly and quietly dies. Is it a heart attack? Or is it murder? If it's murder, who is the culprit? Is it the thief trying to cover his tracks, or is it someone else with a different motive?

Consider the suspects: There's Richard, the son of the inventor, who has debts and who resents his late father's stinginess with both money and affection. Then there's Richard's new wife, Lucia, who has a dark secret that she desperately wants to keep hidden from Richard and his family. And what about Dr. Carelli, a stranger who purports to be Italian and a doctor, but who may not be either? Or perhaps some other member or members of the household are culpable?

It falls to Hercule Poirot, the redoubtable Belgian sleuth, to find the truth in a thicket of lies. So goes the plot of *Black Coffee*, which opens in Hallowell this Friday. Although Agatha Christie had already published nearly a dozen novels, *Black Coffee* was her first play, which originally opened in London in December 1930.

In Gaslight Theater's production, Henrik Strandskov stars as Hercule Poirot; Frank Omar as his loyal sidekick, Captain Hastings; George Dunn as Sir Claud Amory; Jonathan Marcoullier as Richard Amory; Maggie Wachtl as Lucia Amory; Nancy Kenneally as the eccentric inventor's spinster sister Caroline; Grace Kenneally as his niece Barbara; Henry

GASLIGHT THEATER
Hallowell City Hall Auditorium
1 Winthrop Street, Hallowell, ME
Proudly presents



Director: Bob Gilbert Ass't Director: Linda Duarte
Producer: Carol Homer

August 19 & August 20 at 7:30pm
August 26 & August 27 at 7:30pm
August 21 & August 28 at 2:00pm

\$12 Adults - \$10 Seniors & Students

For reservations: 626-3698 or GaslightTheater.org
Presented by special arrangement with Samuel French, INC.

Thanks to our season sponsor




Quintal as his secretary and lab assistant; Matthew Perry as the faithful butler Treadwell; Nathan Brown as the unctuous Dr. Carelli; Gregor Smith as the family's physician, Dr. Graham; Ray Fletcher as jovial Inspector Japp of Scotland Yard; and Jonathan Williams as the taciturn Constable Johnson. The play is

directed by Bob Gilbert, aided by assistant director Linda Duarte, stage manager Samantha Boucher, producer Carol Homer, and lighting designer Andrew Vick.

Performances will take place August 19-21 and 26-28 at Hallowell City Hall, 1 Winthrop St, Hallowell. The Friday and Saturday performances will start at 7:30 p.m. and the Sunday performances at 2:00 p.m. Tickets cost \$12 for adults and \$10 for seniors (older than 59) and students. To reserve seats, go online to www.gaslighttheater.org or call 626-3698. The show will run around two and a half hours, with one intermission.

During that first weekend, Gaslight will also hold auditions for its next production, *The Man Who Came to Dinner*. Written by George S. Kaufman and Moss Hart and directed by Jenny Benjamin Rider, the play opens when Sheridan Whiteside, a pompous theater critic and traveling lecturer, slips on the doorstep of the home Mr. and Mrs. Ernest Stanley and becomes the house guest from Hell, staying six weeks to recuperate and compelling the Stanleys to cater to his bizarre whims and exotic tastes.

Auditions will take place at Hallowell City Hall on Saturday, August 20 at 10:00 a.m. and Sunday, August 21 at 6:30 p.m. Prospective cast members may attend either session, where they will give unrehearsed readings of selected excerpts from the script. There are parts for fifteen men and five women. For descriptions of the roles, visit www.gaslighttheater.org. The performances will take place November 11-13 and 18-20.





SNOW POND
CENTER FOR THE ARTS
2016 SUMMER MUSIC SERIES



August 25
7:30 pm
Bowl In The Pines

FRANKIE VALLI & THE FOUR SEASONS TRIBUTE
DECEMBER '63

AUDITIONS

THE SNOW POND YOUTH SYMPHONY Conductor - Jinwook Park

Snow Pond invites all serious music students of orchestral instruments in grades 7-12 to audition for the Snow Pond Youth Symphony

AUDITIONS: Tuesday August 30, from 6:30 pm
Additional days to be scheduled

CONTACT: To schedule audition and for any questions and more information, contact **Betsy Kobayashi**
pinelandsuzuki@gmail.com 207-621-4166

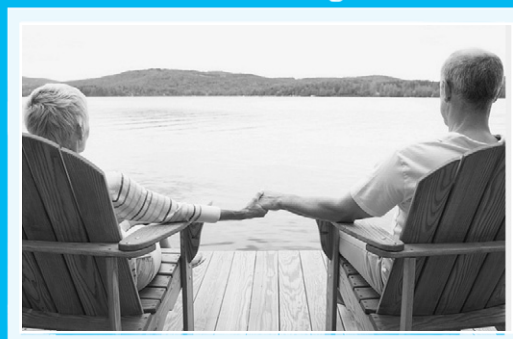


Tickets and information
available at www.snowpond.org
8 Goldenrod Lane, Sidney, Maine 04330 844-476-6976



"The Golden Age is before us, not behind us"
...William Shakespeare

Whether you are 55 or 85 our mission is the same...
grow and protect your family's treasure for your
'Golden Age'



129 Silver St, Waterville, ME
Phone: (207) 873-2200
www.goldenpondwealth.com

Securities offered through LPL Financial, Member FINRA/SIPC



Your own little island of

FUN

**LARGEST
SHOREMASTER
DISTRIBUTOR
in the
COUNTRY**

Improve your lake shore living experience with a **SHOREMASTER SWIM RAFT**. Kids and adults alike will enjoy years of fun and treasured memories.

We Cover The Waterfront.

SHOREMASTER

SWIM RAFTS

90" x 114" Poly Swim Raft – Poly Deck - Yellow or Gray	\$1,129
8'x8' Aluminum Swim Raft Cedar Deck	\$1,589
8'x8' Aluminum Swim Raft Aluminum Deck	\$2,029
8'x8' Aluminum Swim Raft White Aluminum	\$2,099
Rip Raft – Tan or Orange	\$849

Ladder sold separately

3 step pivot ladder	\$269
4 step pivot ladder	\$329
5 step pivot ladder	\$369
Nylon Rope Ladder (Rip Raft only)	\$57
2 step Rip Raft Ladder	\$215

Toll-free 1-866-HAMMOND

Hammond Lumber Company

Visit us online at www.hammond-shoremaster.com for a 82-page Product Planning Guide & Price List.

AUBURN • BANGOR • BELGRADE • BOOTHBAY HARBOR • BRUNSWICK • DAMARISCOTTA
FAIRFIELD • FARMINGTON • GREENVILLE • PEMAQUID • PORTLAND • SKOWHEGAN • WILTON

Lakepoint

REAL ESTATE

207.495.3700

221 Main St.,
Belgrade Lakes, ME 04918

www.belgradelakepoint.com



NEW SHARON : 100 wooded acres. Power at the road. Kennebec Highlands Hiking trails across the road. Soil test avail. #1259273 **\$129,000**



GREAT POND, BELGRADE: 425 +/- Lakefront. Very high-end 4BR/4BA 3400 sq.ft. year-round Custom Home. Too many amenities to list here. #1276500 **\$1,290,000**



GREAT POND, BELGRADE : 3BR/2.5BA main home. 2BR/1BA guest quarters above 2 car heated garage. Pvt sandy frontage, on 4.11 acres. #1141526 **\$895,000**



BELGRADE : 4BR, 2.5BA, Classic Colonial. Views of Long Pond. Many great features and located in the heart of Belgrade Lakes Village. #1276273 **\$299,500**



READFIELD: Contemporary on 13.56 acres. Designed by Boston architect. Amenities abound. 50 mile views of Torsey Pond and foothills. #1267360 **\$324,500**



ROME : Off grid living. Cottage w/1BR and large sleeping loft. Custom made cabinets, gas fridge, shower w/heating sys. Comes furnished. #1261509 **\$44,900**



BELGRADE STREAM, BELGRADE: 425' stream frontage. 5.4 acres. 3BR, 2.5BA. Custom built exceptional home with many amenities. #1251229 **\$699,900**



GREAT POND, BELGRADE: Set up a tent, camp out, or build your own private cottage. Elec. nearby, relaxing views of mountains and sunsets. #1227105 **\$85,000**



PARKER POND, FAYETTE: 3BR, steps to water. Open Fam rm/kitchen, easy location, swimming, kayaking, or just relaxing. Easy boat access. #1242281 **\$135,000**

GRANITE HILL ESTATES

MARTHA BALLARD
ASSISTED LIVING

Part of:
MaineGeneral Health

Retire your way. Today!

In a community that cares.

Now's the time to join the family at **Granite Hill Estates**, central Maine's premiere continuing care retirement community and part of **MaineGeneral Health**. Call 207-626-7786 or toll free 1-888-321-1119 today to schedule a tour. Offering an impressive menu of amenities:

- Spacious cottage homes and apartments
- Elegant full-service dining plan
- Maintenance and housekeeping services
- Scheduled courtesy transportation
- Social, cultural and educational programs
- Indoor pool complete with hot tub
- Cozy reading room, library and bank
- Attractive game, billiard, and meeting rooms
- Fitness center with an on-site fitness coordinator
- Convenient hair salon, massage spa and meditation room
- Wooded walking trails throughout our 135 acre campus

Awarded
Highest Honors
for
Resident
Satisfaction

Holleran National
Senior Living Survey



email: info@granitehillestates.com

60 Balsam Drive, Hallowell, ME 04347

207-626-7786

1-888-321-1119

granitehillestates.com



in a GREAT PLACE



For 146 years we have helped make Kennebec County a great place to work, live and play.



Kennebec Savings Bank

Where banking is easy.

Augusta | Waterville | Farmingdale | Winthrop

www.kennebecsavings.com

