

6-2013

Maine Juvenile Recidivism Report. 2013

Robyn Dumont
Muskie School of Public Service

Maine Department of Corrections

Follow this and additional works at: https://digitalmaine.com/doc_docs

Recommended Citation

Dumont, Robyn and Maine Department of Corrections, "Maine Juvenile Recidivism Report. 2013" (2013). *Corrections Documents*. 4.
https://digitalmaine.com/doc_docs/4

This Text is brought to you for free and open access by the Corrections at Digital Maine. It has been accepted for inclusion in Corrections Documents by an authorized administrator of Digital Maine. For more information, please contact statedocs@maine.gov.

2013

Juvenile Recidivism Report



Juvenile Recidivism Report

Issued by the Maine Department of Corrections,
Division of Juvenile Services, and produced by the
Muskie School of Public Service, Maine Statistical Analysis Center

Author:
Robyn Dumont

June 2013

Table of Contents

Recidivism Analysis.....	1
Key Findings.....	2
I. Overview	3
Cohort Size.....	3
Demographics.....	3
Demographic Trends.....	5
Offense Characteristics.....	6
Recidivism.....	7
YLS-CMI.....	10
County Analyses.....	11
II. Diverted Youth.....	13
Introduction.....	13
2011 Cohort Description.....	13
Trends.....	16
Recidivism.....	19
County Analyses.....	22
III. First Adjudicated Supervised Youth.....	25
Introduction.....	25
2011 Cohort Description.....	25
Trends.....	26
Recidivism.....	29
County Analyses.....	36
IV. Committed Youth.....	39
2006 – 2011 Cohorts Description.....	39
Trends.....	42
Correlations.....	45
Community Reintegration.....	46
Recidivism.....	48
County Analyses.....	53
V. Discharged Youth.....	54
Introduction.....	54
2011 Cohort Description.....	54
Trends.....	57
Recidivism.....	60
County Analyses.....	66
Acknowledgments.....	

Recidivism Analysis

This report summarizes the data for four groups of youth involved with the Department of Juvenile Services (DJS) between the years of 2006 and 2011. The four groups are as follows:

- **Diverted Youth:** These youth have been referred to the juvenile justice system but then formally diverted by a Juvenile Community Corrections Officer (JCCO). Diversions include sole sanctions, no further actions, and informal adjustments. Youth who are successfully diverted do not continue on through the juvenile justice system. They may, however, be placed back into the justice system should diversion be determined ineffective.
- **Supervised Youth:** These youth have had formal charges brought against them, been found delinquent in a juvenile court, and placed under DJS supervision (either in the community or in a facility).
- **Committed Youth:** These youth have had formal charges brought against them, been found delinquent in a juvenile court, and placed in a secure juvenile facility.
- **Discharged Youth:** These youth have had formal charges brought against them, been found delinquent in a juvenile court, placed under DJS supervision (either in the community or in a facility), and then released.

This report includes analysis of youth demographics, offense class and type, Youth Level of Service/Case Management Inventory (YLS-CMI) completion rates and risk levels, recidivism rates¹ and county-level data. The time component of recidivism is different for each group (please see individual report sections), but recidivism for all groups is defined in terms of whether an adjudicated youth is re-adjudicated (as a juvenile) or convicted (as an adult) for an offense committed past the time point indicated for the particular group².

This report contains separate analyses for each of the four groups as well as an overview section.

¹ Civil class recidivating offenses are not included in recidivism rates in this brief.

² For diverted youth, who avoid adjudication for the original offense through the diversion process, the recidivating offense would be the first adjudication.

Key Findings

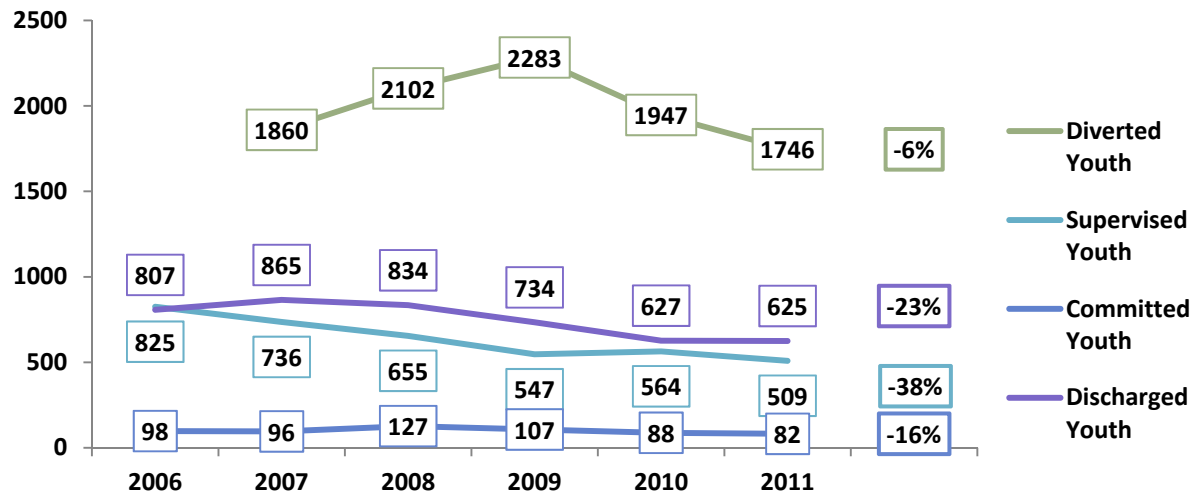
- The number of youth decreased over the years of study for all groups. The number of supervised youth decreased by 38%, the number of discharged youth decreased by 23%, the number of committed youth decreased by 16%, and the number of diverted youth decreased by 6%.
- The proportion of minority youth has increased for all groups. Approximately 6% of diverted youth were minorities, 10% of discharged youth were minorities, 12% of supervised youth were minorities, and 28% of committed youth were minorities.
- The proportion of supervised and discharged youth with felony offenses remained relatively stable (at 19% and 21% respectively), but the proportion of committed youth with felony offenses decreased. In 2006, a little more than half (55%) of committed youth were committed for felonies; by 2011, that proportion had decreased to less than a third (32%).
- Diverted youth had the lowest one-year recidivism rate, at 8%; supervised and discharged youth recidivated at 28% and 19% respectively; and committed youth recidivated at the highest rate, at 44%.
- Recidivism rates remained stable over the years of study for diverted youth, but fluctuated for supervised and committed youth. Recidivism rates for discharged youth trended upward between the 2007 and 2009 cohorts, from 14.8% to 23.8%.
- The timeframe for recidivism was similar for all groups. Youth who recidivated within the two-year time frame were most likely to recidivate within the first 3 months. More than half of recidivating youth recidivated within 9 months.
- While the YLS-CMI appears to predict recidivism, research findings suggest that the tool may be more accurate when used with a white male population.
- While 62.5% of committed youth were released to community reintegration, there were differences in rate by facility. Approximately 70.1% of Mountain View Youth Development Center (MVYDC) youth were released to community reintegration, compared to 57.3% of Long Creek Youth Development Center (LCYDC) youth.
- Compared to the state average, Androscoggin, Franklin, and Penobscot Counties had lower rates of diversion, supervision, commitment, and discharge.
- Compared to the state average, Sagadahoc, Somerset, and York Counties had higher rates of diversion, supervision, commitment, and discharge.
- Compared to the state average, Androscoggin, Aroostook, and Kennebec Counties had a higher recidivism rate for diverted, supervised, and discharged youth.
- Compared to the state average, Knox, Oxford, and York Counties had a lower recidivism rate than the statewide average for diverted, supervised, and discharged youth.

I. Overview

Cohort Size

The number of youth decreased over the years of study for all groups.³ The number of supervised youth decreased the most, by 38%. The number of discharged youth decreased by 23%, and the number of committed youth decreased by 16%. The number of diverted youth decreased the least, by 6%.

Figure I-1

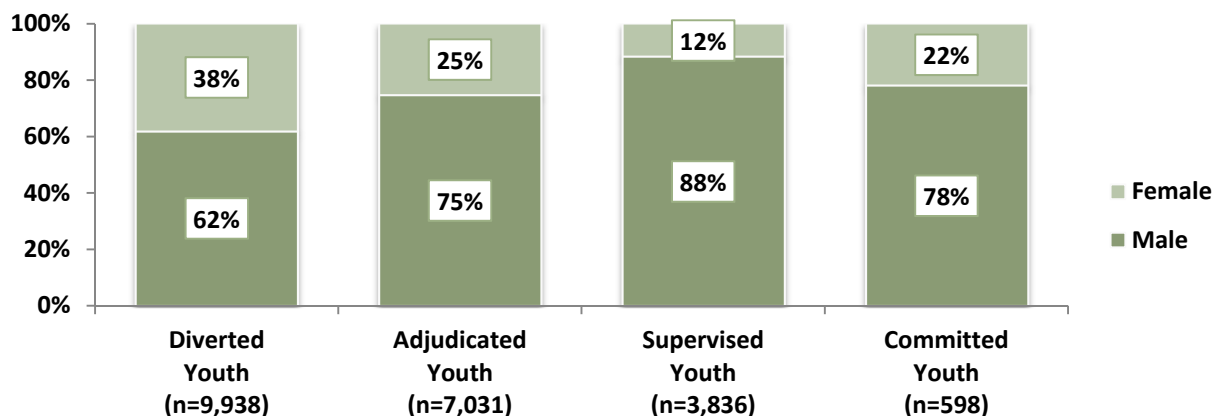


Demographics

Gender

For all groups, the majority of youth were male. The group with the highest percentage of females was diverted youth, at 38%, while the group with the smallest proportion of females was committed youth, at 12%.

Figure I-2: Gender Distribution



³ Data were not obtained for diverted youth for 2006.

Age⁴

The average age of youth varied from group to group. The youngest groups were diverted youth (15.61) and supervised youth (15.68). The oldest groups were discharged youth (17.06) and youth who had been committed then released into Community Reintegration (17.39).

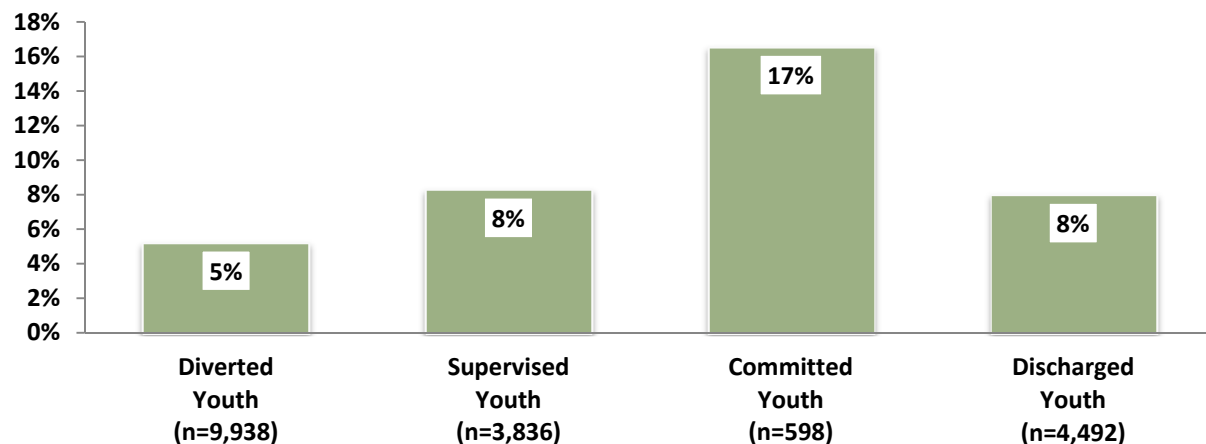
Figure I-3: Average Age



Race/Ethnicity

The proportion of minority youth varied from group to group. The diverted group contained the smallest proportion of minority youth, at 5%. The committed group contained the highest proportion, at 17%.

Figure I-4: Proportion of Minority Youth



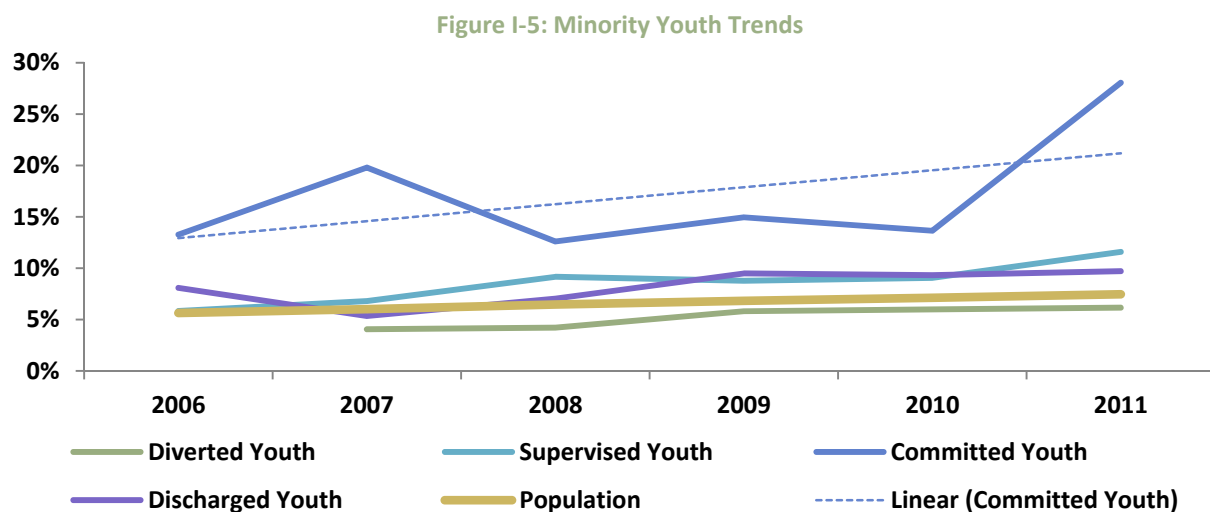
⁴ The age reported here is age upon entry into the group of reference. Thus, for supervised youth, it is the age at beginning of supervision; for CR youth, it is the age of at start of community reintegration.

Demographic Trends

Average age has remained stable across the study years for all groups. Gender distribution has remained steady as well for all groups except discharged youth (see separate section for details). The proportion of minority youth, however, has been increasing for all groups.

Figure I-5 illustrates the relative differences between the groups' proportions of minority youth compared to Maine's minority population (line in **bold**). Among all groups, the committed group's proportion of minority youth is the furthest from the population proportion.

Note on Figure I-5: The line for Committed Youth (blue) is made up of highs and lows, but the irregularity of the line is due to small changes in a small population rather than large changes. For instance, the "jump" between 2010 and 2011 was created by 11 additional minority youth. What is noteworthy about the line for committed youth is its distance from the population average and the upward trajectory of its trend line (dotted blue).

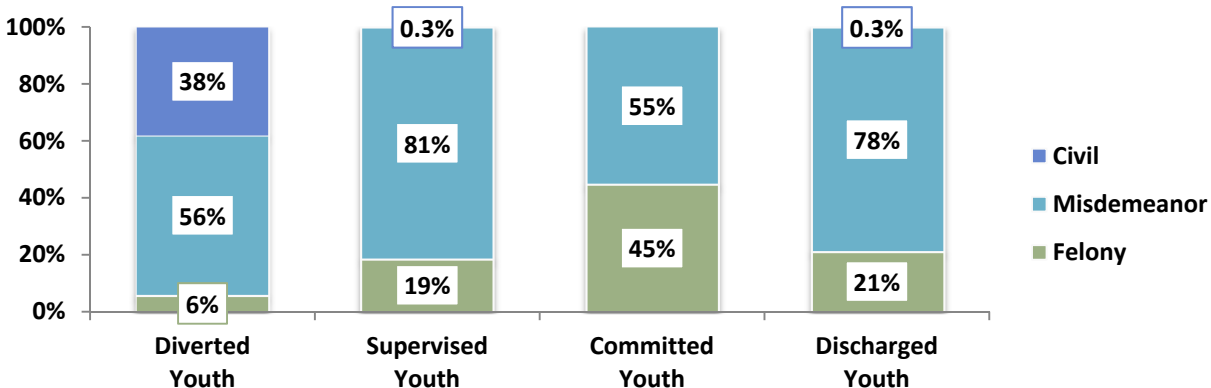


Offense Characteristics

Offense Class

While misdemeanor offenses made up the largest proportion of offenses for every group, the groups still differed in terms of youth's most serious offense class. The committed group had the highest proportion of felony offenses (45%) and no civil offenses, while diverted youth had the highest proportion of civil offenses (38%) and the lowest proportion of felonies (6%).

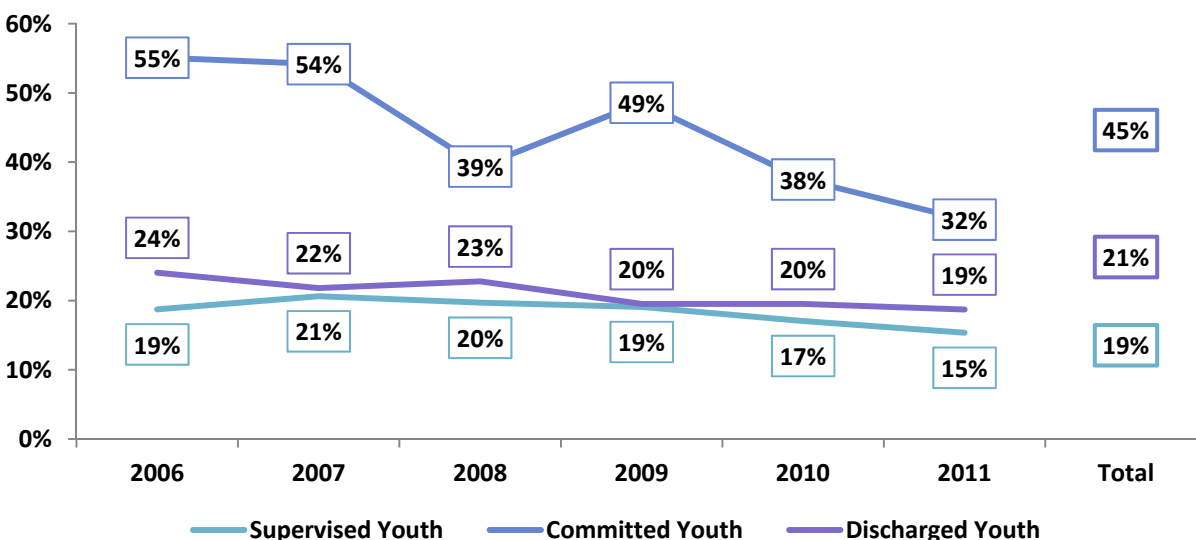
Figure I-6: Offense Class



Offense Class Trends

A small proportion of supervised, committed, and discharged youth had civil offenses and removing these civil cases from analysis allows for direct comparison between felony and misdemeanor offenses. While the proportion of youth with felony offenses has remained relatively stable among supervised and discharged youth (at 19% and 21% respectively), the proportion of youth with felony offenses among committed youth has been trending downward. In 2006, a little more than half (55%) of these youth were committed for felonies. By 2011, that proportion had decreased to less than a third (32%)

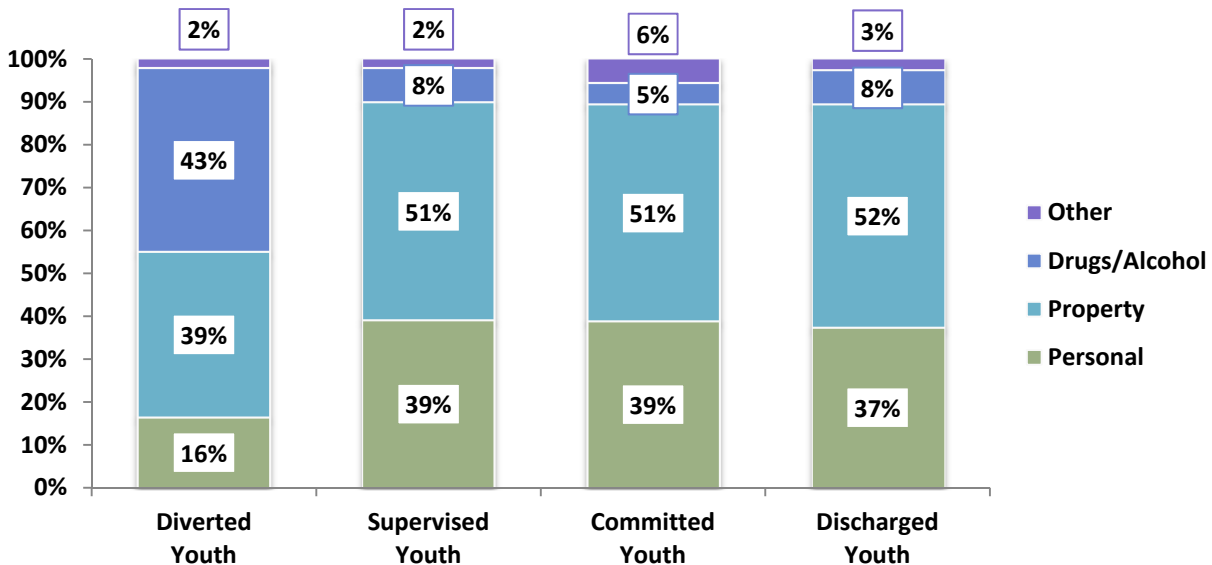
Figure I-7: Offense Class Trends



Offense Type

The distribution of offense types was similar among the supervised, committed, and discharged groups. Approximately 51% of offenses for these three groups were property offenses, 38% were personal offenses, and 8% were drugs/alcohol offenses. For the diverted group, however, drugs/alcohol offenses made up 43% of the distribution, forming the largest category. Property offenses were the second largest, at 39%, while personal offenses made up 16% of the total for the diverted group.

Figure I-8: Offense Type



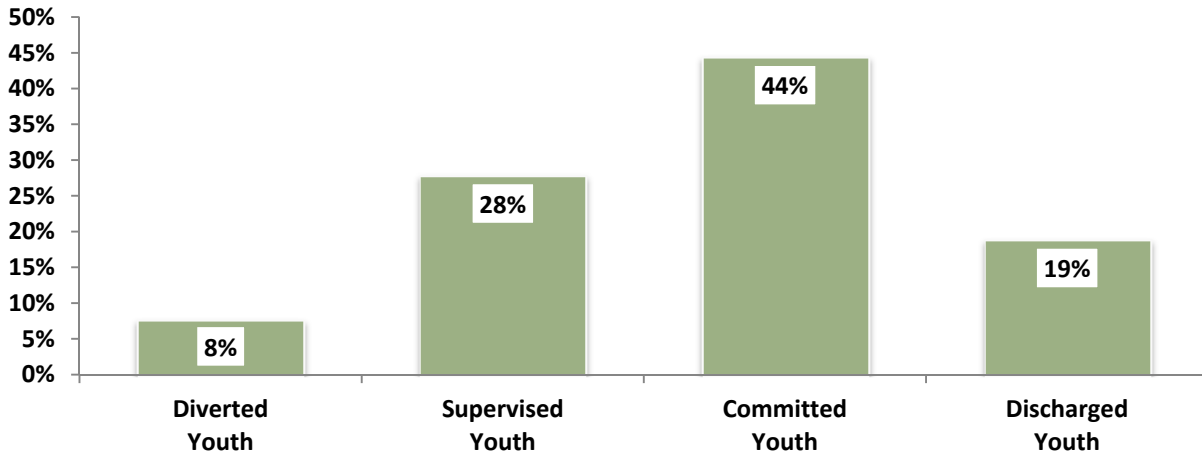
Recidivism

One-Year Recidivism (2006-2009 Cohorts)⁵

The one-year recidivism rate varied from group to group. Diverted youth recidivated at the lowest rate (8%) while committed youth recidivated at the highest rate (44%).

⁵ The 2009 cohort is the most recent cohort for which a sizeable percentage (77%) of committed youth had been discharged and tracked for a full year.

Figure I-9: One-Year Recidivism, 2006-2009 Cohorts

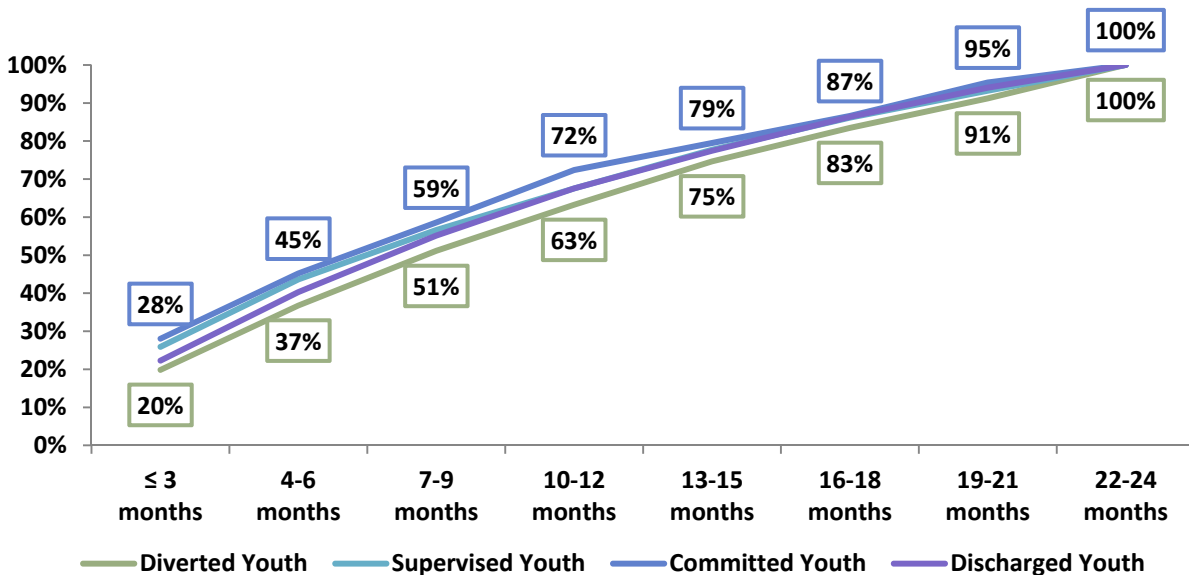


Time to Recidivate

Although there were differences in the proportion of youth who recidivated between the four groups, the timeframe for recidivism was similar for all.

Figure I-10 shows the proportion of youth who recidivated according to the 3-month time period in which they recidivated. Diverted youth recidivated at the slowest rate, while committed youth recidivated at the fastest rate.

Figure I-10: Time to Recidivate



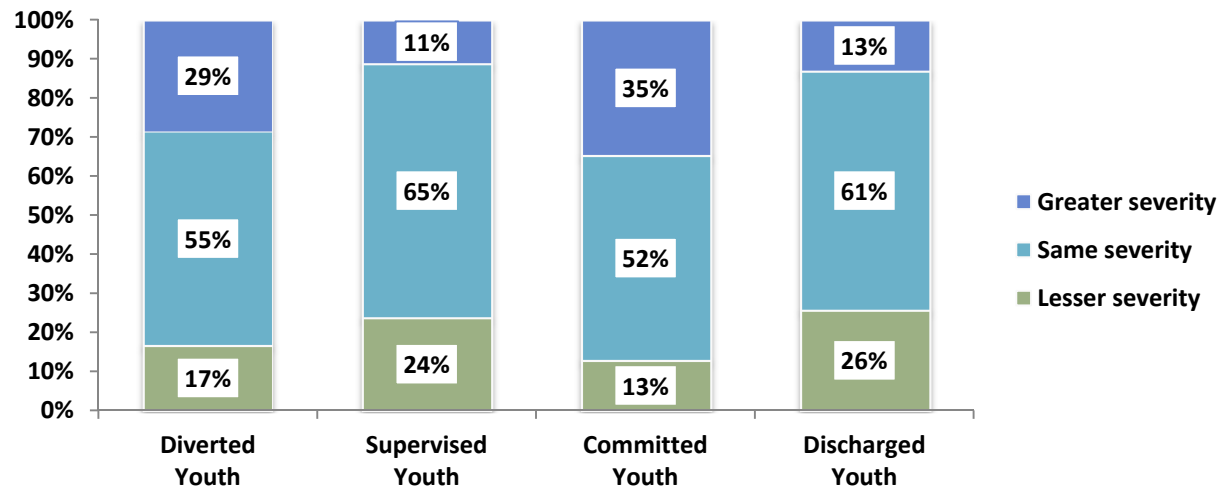
Changes in Offense Class

The majority of youth who recidivated, regardless of group, tended to recidivate with offenses having the same level of severity as the original offense.

This proportion ranged between 52% for committed youth to 65% for supervised youth. The remaining youth recidivated with offenses that resulted in a change in severity, recidivating with offenses having either lesser or greater severity.

When there was a change in severity, committed and diverted youth tended to recidivate with greater severity offenses, while supervised and discharged youth tended to recidivate with lesser severity offenses.

Figure I-11: Change in Offense Class Severity



YLS-CMI

The YLS-CMI was administered to three of the four groups (supervised, committed, and discharged youth), and analysis was done to explore the association between risk level and recidivism, differences in score and recidivism by gender, and difference in score and recidivism by race/ethnicity.

YLS-CMI completion rate:

- Supervised: 78%
- Committed: 74%
- Discharged: 80%

Risk levels and their effectiveness in predicting recidivism:

- Supervised: Higher risk levels were associated with recidivism
- Committed: Only seven low-risk youth were in the dataset, which made this category too small to include in the analysis. The recidivism rates for moderate- and high-risk youth were 36% and 44% respectively, and these rates were not statistically different, which suggests that risk levels do not predict recidivism in this group.
- Discharged: Higher levels were associated with recidivism.

Differences in risk score by gender and differences in recidivism:

- Supervised: There was no difference in score, but females were less likely to recidivate.
- Committed: There was no difference in score, but females were less likely to recidivate. Also, more moderate-risk females recidivated than did high-risk females. These findings may suggest that the tool does not accurately predicting recidivism with a female population.
- Discharged: Females had a higher average score but were not more likely to recidivate. Again, however, more moderate-risk females recidivated than did high-risk females. These findings may suggest that the tool does not accurately predicting recidivism with a female population.

Differences in risk score by race/ethnicity and differences in recidivism:

- Supervised: Minority youth had a higher average score and were more likely to recidivate than white youth; this correlation suggests that the difference in scores is warranted. However, more moderate minority youth recidivated than did high-risk minority youth, which may suggest that the tool does not accurately predicting recidivism with a minority population.
- Committed: Minority youth had a higher average score but were not more likely to recidivate.
- Discharged: Minority youth had a higher average score but were not more likely to recidivate.

Overall, the tool appears to predict recidivism, but when risk scores and levels are compared to recidivism outcomes by gender and race/ethnicity, findings suggest that the tool may be more valid when used with a white male population.

County Analysis

Rates by County

The following table displays the average county juvenile population count for years 2006 to 2009 as well as the rate of diversion, supervision, commitment and discharge per 1,000 juveniles for each county⁶.

Androscoggin and Penobscot Counties had rates lower than the statewide average for all four groups.

Sagadahoc, Somerset, and York Counties had rates higher than the statewide average for all four groups.

Table I-1: Diversion, Supervision, Commitment, and Discharge Rates; by County

County and Average 10- to 17-Year-Old Population per Year		Diverted Youth ⁷		Supervised Youth		Committed Youth		Discharged Youth	
		Rate = Average Rate per 1,000 +/- = Above (+) or Below (-) Statewide Average							
		Rate	+/-	Rate	+/-	Rate	+/-	Rate	+/-
Androscoggin	10,749	13.9	-	3.0	-	0.37	-	4.1	-
Aroostook	7,097	13.6	-	5.1	+	1.03	+	5.8	+
Cumberland	27,899	15.5	+	3.3	-	0.96	+	5.1	+
Franklin	2,968	10.0	-	3.3	-	0.45	-	5.3	+
Hancock	4,690	16.2	+	3.7	-	0.57	-	3.7	-
Kennebec	12,127	12.6	-	5.1	+	0.71	+	5.1	+
Knox	3,672	12.6	-	5.0	+	0.73	+	5.6	+
Lincoln	3,157			6.4	+	0.11	-	6.1	+
Oxford	6,175	17.7	+	1.1	-	0.27	-	1.7	-
Penobscot	14,084	13.0	-	2.3	-	0.33	-	3.2	-
Piscataquis	1,704	24.7	+	3.1	-	0.39	-	1.6	-
Sagadahoc	3,454	16.3	+	10.8	+	1.06	+	14.5	+
Somerset	5,472	17.1	+	5.9	+	1.10	+	7.6	+
Waldo	3,886	20.0	+	5.9	+	0.51	-	6.9	+
Washington	3,116			3.7	-	0.75	+	5.0	-
York	20,429	14.9	+	5.0	+	0.86	+	5.2	+
Statewide	130,678	14.1		4.1		0.71		5.1	

⁶ Three-year averages were calculated using 2009-2011 population data obtained from the Easy Access to Juvenile Populations website for youth ages 10-17, accessed at <http://www.ojdp.gov/ojstatbb/ezapop>.

⁷ County data for diverted youth were extrapolated from JCCO and JCCO office variables. No data were available for 7.2% of the 2009-2011 records. No JCCOs reported cases for Lincoln or Washington Counties; thus no data were available for these counties.

Recidivism by County

The following table displays recidivism rates for diverted, supervised, and discharged youth. (There were too few committed youth to break that group down by county.) Androscoggin, Aroostook, and Kennebec Counties had a higher recidivism rate than the statewide average for all three groups. Knox, Oxford, and York Counties had a lower recidivism rate than the statewide average for all three groups.

Table I-2: Recidivism Rates, by County

	Diverted (2007-2010)		Supervised (2006-2010)		Discharged (2006-2010)	
	% = % of Youth Recidivated		+/- = Above (+) or Below (-) Statewide Average			
	%	+/-	Rate	+/-	Rate	+/-
Androscoggin	8.4%	+	32.6%	+	24.9%	+
Aroostook	10.2%	+	27.0%	+	19.0%	+
Cumberland	6.4%	-	27.3%	+	17.2%	-
Franklin	6.5%	-	28.6%	+	17.2%	-
Hancock	8.6%	+	24.3%	-	19.7%	+
Kennebec	11.7%	+	28.0%	+	26.5%	+
Knox	6.2%	-	25.0%	-	17.5%	-
Lincoln			24.2%	-	12.6%	-
Oxford	3.9%	-	14.1%	-	15.1%	-
Penobscot	7.2%	-	29.7%	+	19.8%	+
Piscataquis	6.0%	-	21.9%	-	26.2%	+
Sagadahoc	13.2%	+	24.3%	-	11.7%	-
Somerset	7.6%	+	24.0%	-	17.2%	-
Waldo	12.1%	+	19.8%	-	13.8%	-
Washington			27.1%	+	23.1%	+
York	4.7%	-	22.6%	-	15.4%	-
Statewide	7.5%		25.9%		18.4%	

II. DIVERTED YOUTH

Introduction

Diversion occurs when a referred youth is formally diverted by a Juvenile Community Corrections Officer (JCCO) from the juvenile justice system. Diversions include sole sanctions, no further actions, and informal adjustments. Youth who are successfully diverted do not continue on through the juvenile justice system. They may, however, be placed back into the justice system should diversion be determined ineffective.

This brief analyzes data on youth who were referred for the first time and diverted at some point during the 2006-2011 calendar years. It includes analysis of youth demographics, offense class and type, recidivism rates⁸, and county-level analysis. For the purpose of this report, recidivism is defined in terms of whether a diverted youth is adjudicated (as a juvenile) or convicted (as an adult) for an offense committed following the end of diversion.

2011 Cohort Description

Demographics

The 2011 cohort is the most recent cohort for which recidivism data are available. Almost two-thirds (63.7%) of the youth in this cohort were male, while the remaining proportion (36.3%) were female. Youth 17 years of age made up the largest age group of diverted youth at 32.3%, followed by youth ages 14 and under at 24.5%, 16-year-olds at 21.9%, 15-year-olds at 16.8%, and youth ages 18 and older at 4.5%. White youth made up 92.7% of diverted youth, while minority youth made up the remaining 7.3%.

⁸ Civil class recidivating offenses are not included in recidivism rates in this brief.

Table II-1: Demographic Description, 2011 Cohort (n=1,746)

Demographics	#	%
Gender		
Male	1,113	63.7%
Female	633	36.3%
Age		
≤ 14	427	24.5%
15	293	16.8%
16	383	21.9%
17	564	32.3%
≥ 18	79	4.5%
Race		
White	1,618	92.7%
Minorities	106	6.1%
Unknown	22	1.3%
Total	1,746	100.0%

Offense Class and Type

While youth may be charged with more than one offense at the time of referral, only the most serious offense associated with diversion is reported here. The majority (53.8%) of offenses associated with diversion were misdemeanor offenses. More than half (57.6%) of misdemeanors were property offenses, 29.4% were personal offenses, 8.5% were drug and alcohol offenses, and 4.5% were “other” offenses⁹. Another 39.9% of offenses associated with diversion were civil offenses, and the majority of these, 98.6%, were drug and alcohol offenses. The remaining 6.4% of offenses associated with diversion were felony offenses. Approximately 62.2% of felonies were property offenses, 21.6% were personal offenses, 11.7% were drug and alcohol offenses, and the remaining 4.5% were “other” offenses.

⁹ “Other” offenses include carrying concealed weapon, refusing to submit to arrest or detention, trafficking in dangerous knives, dissemination of sexually explicit material, and false public alarm or report, etc.

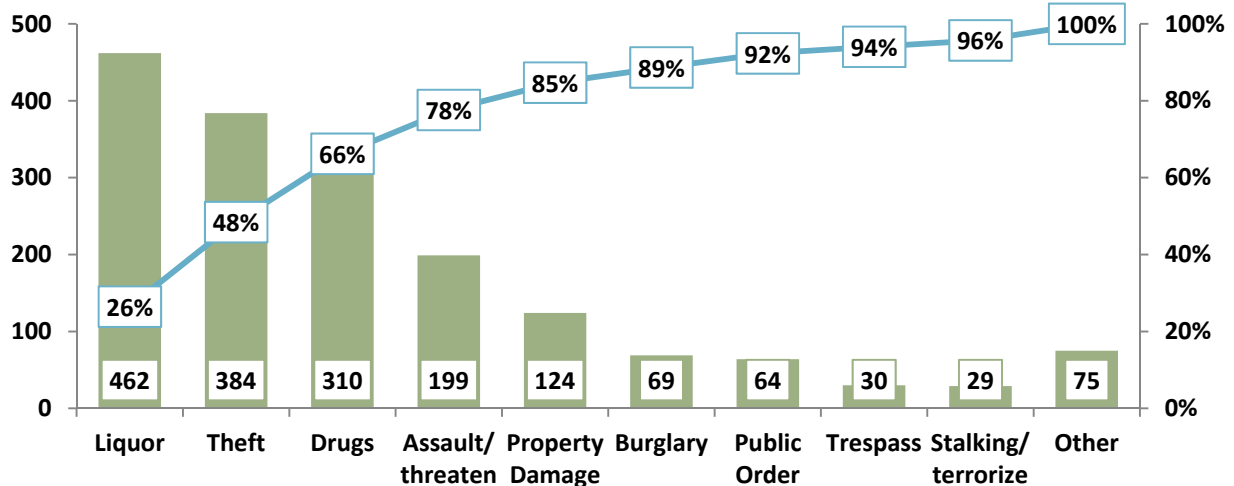
Table II-2: Offense Descriptions, 2011 Cohort (n=1,746)

Offenses	#	%
<i>Civil</i>		
Personal	3	0.4%
Property	6	0.9%
Drugs/Alcohol	686	98.6%
Other	1	0.1%
Total Civil	696	100.0%
<i>Misdemeanor</i>		
Personal	276	29.4%
Property	541	57.6%
Drugs/Alcohol	80	8.5%
Other	42	4.5%
Total Misdemeanor	939	100.0%
<i>Felony</i>		
Personal	24	21.6%
Property	69	62.2%
Drugs/Alcohol	13	11.7%
Other	5	4.5%
Total Felony	111	100.0%
Total Offenses	1746	100%

Offense Description

The most common offense associated with diversion was liquor (26%), followed by theft (22%), drugs (18%), and assault/threaten (11%). These four offenses made up more than three-quarters (78%) of the diversion charges.

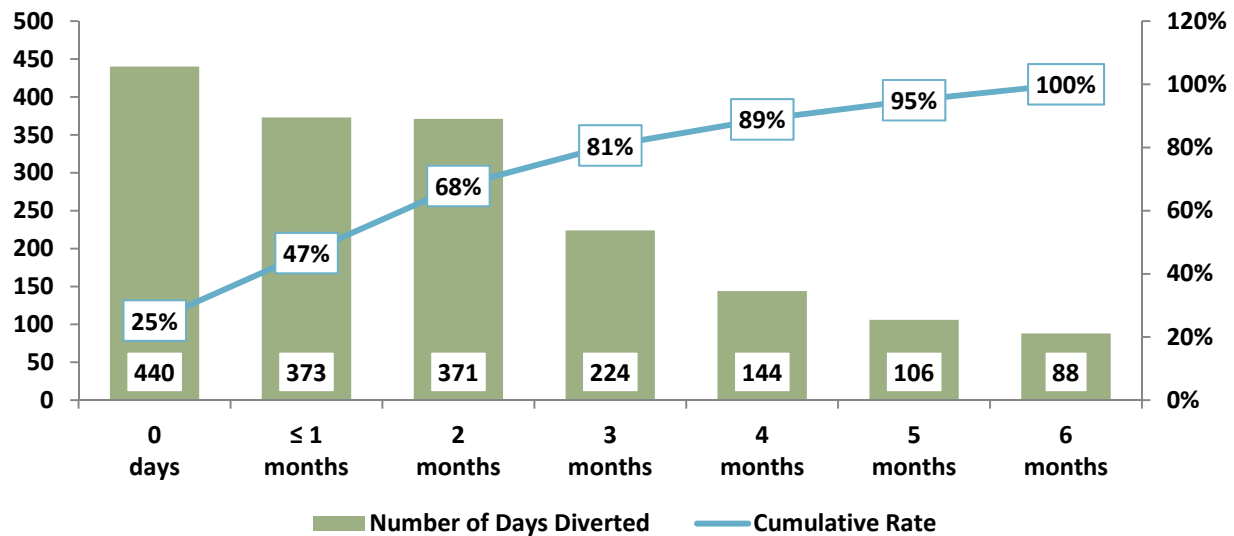
Figure II-1: Offense Descriptions, 2011 Cohort (n=1,746)



Time Diverted¹⁰

On average, youth were diverted for 47 days. A quarter of youth (25%) were diverted for less than one day, while an additional 21% were diverted for less than one month. Thus, almost half (47%)¹¹ of youth diverted spent a month or less diverted.

Figure II-2: Time Diverted, 2011 Cohort (n=1746)



Trends

Number of Diverted Youth and Average Number of Charges

While the number of diverted youth increased by 23% from 1,860 in 2007 to 2,283 in 2009, it decreased by 24% in the two years following, to 1,746 diverted youth in 2011. Overall, the change represents a 6% decrease in the number of diverted youth over the study period.

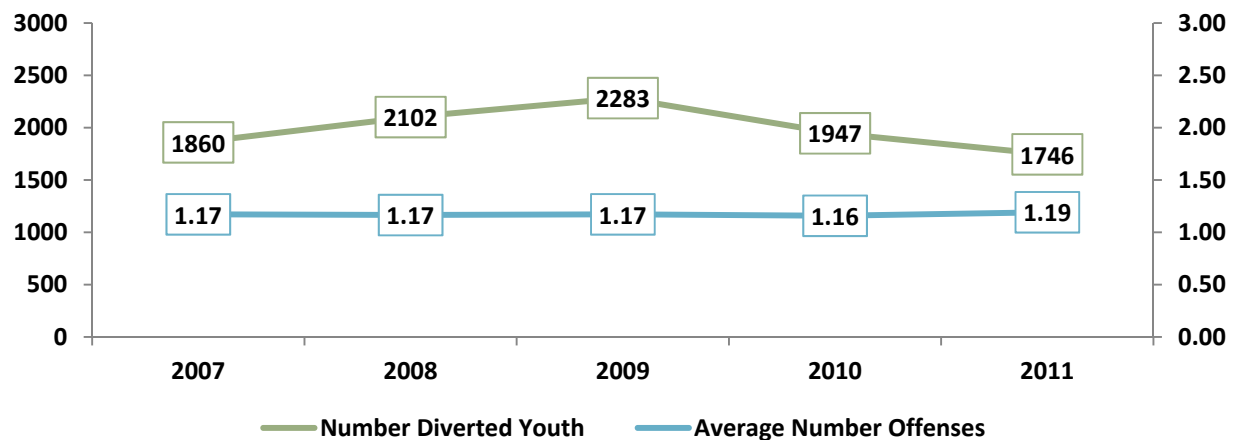
The average number of offenses with which diverted youth were referred remained relatively unchanged from one year to the next, with an average of 1.17 offenses¹². Approximately 87% of youth had one offense, an additional 11% of youth had two offenses, and the remaining 2% had three or more offenses.

¹⁰ This analysis is calculated using diversion start and end dates. In a number of cases, end dates were thought to be inaccurate, reflecting the date that an administrative task of “closing the case” was performed rather than the actual end of diversion. These cases (n=527) were removed from the dataset prior to any analyses. The 527 removed cases represent 5% of the original dataset (n=10,465), leaving a usable dataset of 9,938.

¹¹ Numbers do not add to total due to rounding error.

¹² This average is highly skewed by a small proportion of youth with a large number of offenses.

Figure II-3: Number of Diverted Youth, by Cohort (2007-2011)



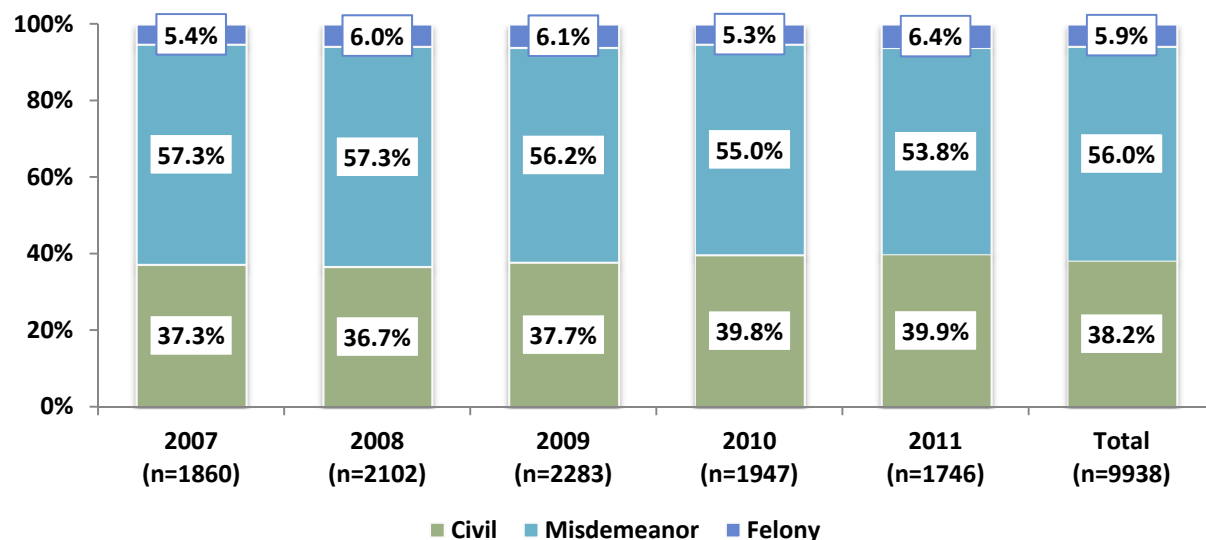
Time Diverted

Across all cohorts, youth were diverted for an average of 44.4 days. This measurement changed only slightly over the years of study, from a low of 42.4 days in 2009, to a high of 46.7 days in 2011.

Offense Class

While youth may have more than one offense at the time of referral, only the most serious charge associated with each youth is reported in this brief. During the study, the majority of diverted youth (56%) were charged with misdemeanor offenses, 38% were charged with civil offenses, and 6% were charged with felonies. These proportions did not change substantially over the years of the study.

Figure II-4: Offense Class, by Cohort

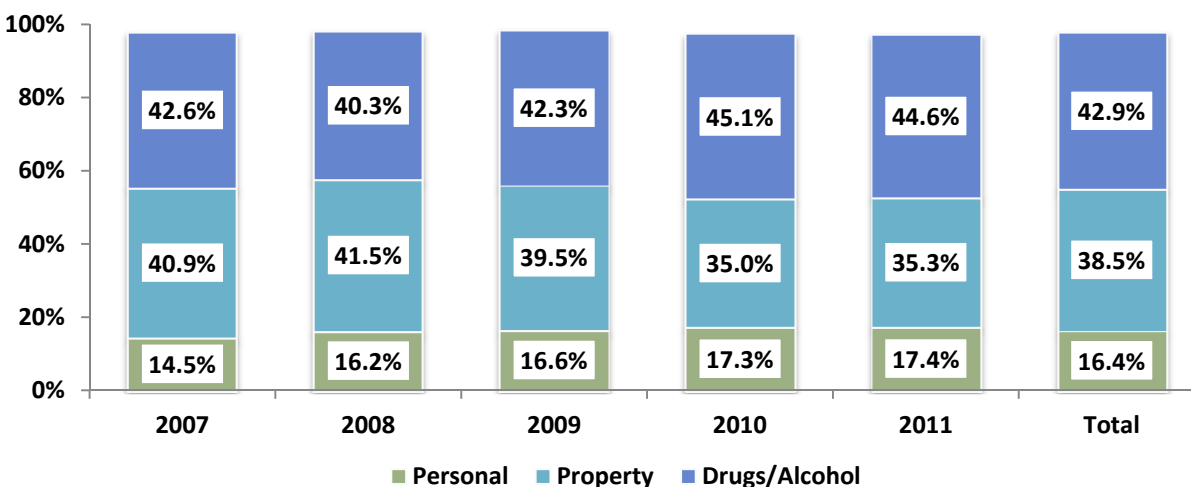


Offense Type

Approximately 43% of the most serious offenses associated with diversion across all cohort years were drug and alcohol offenses.

An additional 39% of most serious offenses were property offenses, and the remaining 16% were personal offenses. These proportions have fluctuated slightly over the years of the study. While slight, these fluctuations are statistically significant¹³.

Figure II-5: Offense Type, 2007-2011 Cohorts

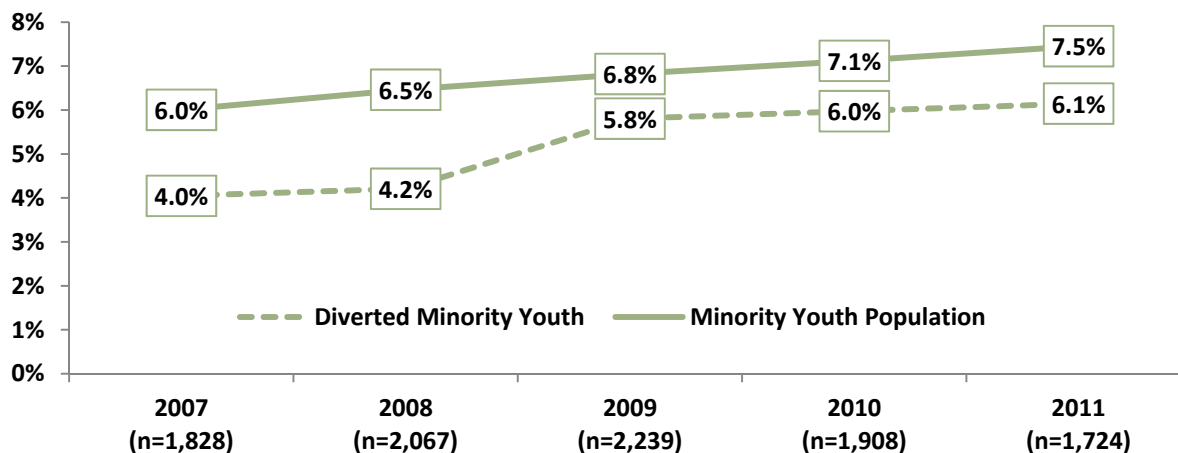


Note: Percentages do not equal 100% due to the exclusion of "other" offenses.

Race

The proportion of minority youth increased slightly over the years of the study, composing 4.0% of the 2007 cohort and 6.1% of the 2011 cohort. While the percentage of minority youth in the population and the percentage of diverted minority youth both increased over the years of study, the proportion of diverted minority youth lagged behind the population proportion for three of the five cohorts—2007, 2008, and 2011¹⁴. For the 2011 cohort, this gap represented 23 youths.

Figure II-6: Percent Minority Youth in Cohorts vs. Percent Minority Youth in Maine Population, 2007-2011 Cohorts



¹³ $\chi^2(12, 9938) = 40.370, p < .001$; Cramer's $V = .037$

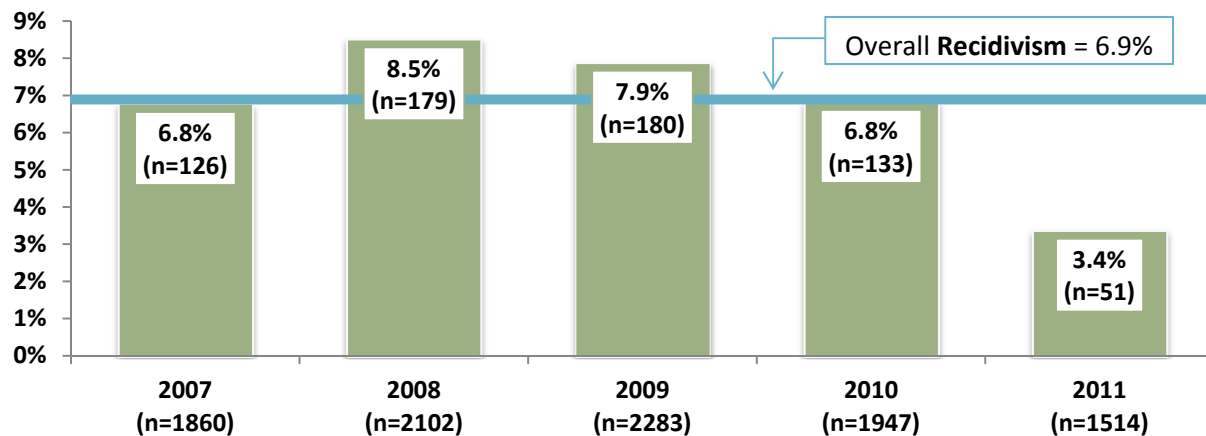
¹⁴ 2007: $\chi^2(1, 1828) = 12.407, p < .001$; 2008: $\chi^2(1, 2067) = 17.379, p < .001$; 2011: $\chi^2(1, 1724) = 4.267, p = .039$.

Recidivism

One-Year Rates

While the recidivism rate for the 2011 is currently the lowest, that rate may change as updates become available¹⁵. Not counting this latest cohort, the lowest rate of recidivism occurred in the 2007 and 2010 cohorts, which were both 6.8%, while the highest rate occurred in the 2008 cohort, at 8.5%. The differences in recidivism rates between the 2007-2010 cohorts are not statistically significant.

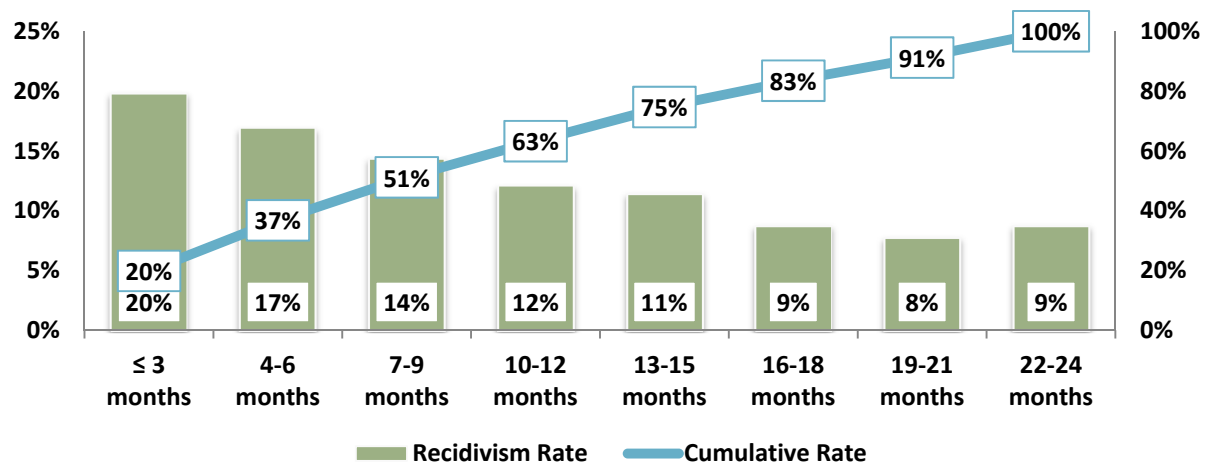
Figure II-7: One-Year Recidivism Rates



Time to Recidivate

Approximately 20% of youth who recidivated within the two-year tracking period did so within the first 3 months. More than half (51%) recidivated within 9 months, and approximately three-quarters (75%) recidivated within 15 months. Each consecutive time period is lower than the previous one, indicating that fewer youth recidivate as time progresses.

Figure II-8: Time to Recidivate, 2007-2011 Cohorts



¹⁵ Some youth may have committed offenses during the one-year time period that have not yet been adjudicated. As this occurs, updates will be made and rates will change accordingly.

Time to Recidivate by Cohort

The following table presents numbers and rates of recidivism for each of the cohorts at the six-month, one-year, eighteen-month, and two-year time marks. Among cohorts for whom recidivism data are not apt to change (2007-2009), the proportion of youth who did not recidivate within two years was between 86% and 87%.

Table II-3: Recidivism by Time, 2007-2011 Cohorts

	Six Months		One Year		Eighteen Months		Two Years		Did not Recidivate		Total Cohort	
	#	%	#	%	#	%	#	%	#	%	#	%
2007 Cohort	70	3.8%	56	3.0%	64	3.4%	55	3.0%	1615	86.8%	1860	100%
2008 Cohort	89	4.2%	90	4.3%	51	2.4%	59	2.8%	1813	86.3%	2102	100%
2009 Cohort	109	4.8%	71	3.1%	66	2.9%	50	2.2%	1987	87.0%	2283	100%
2010 Cohort*	78	4.0%	55	2.8%	32	1.6%	11	.6%	1771	91.0%	1947	100%
2011 Cohort**	43	2.5%	8	.5%	1	.1%	0	0.0%	1694	97.0%	1746	100%

* Eighteen-month and two-year recidivism rates for the 2010 cohort are expected to change as updates are made.

** One-year, eighteen-month, and two-year recidivism rates for the 2011 cohort are expected to change as updates are made.

Recidivism by Demographics

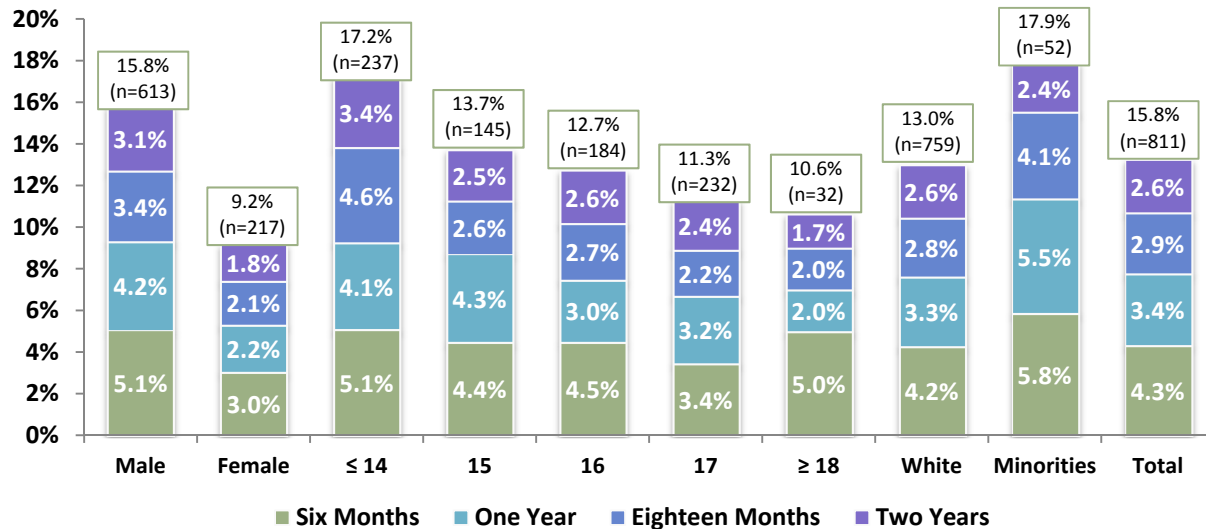
The 2009 cohort is the most recent year for which recidivism data are not expected to change with updates. For the 2007-2009 cohorts, diverted males recidivated at a higher rate (15.8%) than females (9.2%). Younger youth recidivated at a higher rate than older youth; 17.2% of youth 14 years of age and younger recidivated, compared to 10.6% of youth ages 18 and older. Minority youth recidivated at a higher rate (17.9%) than white youth (13.0%). All of these differences are small but statistically significant¹⁶.

¹⁶ Gender: $\chi^2(1, 6245) = 55.79, p < .001, \Phi = .095$

Age: $\chi^2(1, 6245) = 28.022, p < .001, \text{Cramer's } V = .067$

Race: $\chi^2(1, 6134) = 5.752, p = .016, \Phi = .031$

Figure II-9: Recidivism by Demographic Characteristic, 2007-2009 Cohorts



Recidivism and Offense Class

For youth who recidivated, the percentage of misdemeanor and felony offenses increased between diversion offense and recidivating offense, while the percentage of civil offenses decreased. The majority of recidivating youth (61.1%) were initially referred with misdemeanor offenses, and the percentage of youth who recidivated with misdemeanor offenses was 69.6%. Another 33.3% of recidivating youth were referred with civil offenses. The percentage of youth who recidivated with civil offenses was 22.5%. Finally, a small proportion (5.6%) of youth were referred with felony offenses, and the percentage of youth who recidivated with felony offenses was 7.9%. This indicates that youth who recidivated tended to commit more serious offenses compared to their original diversion offenses.

Table II-4: Diversion Offense Class vs. Recidivating Offense class, 2007-2011

		Diversion Offense Class							
		Civil		Misdemeanor		Felony		Total	
Recidivating Offense Class		#	%	#	%	#	%	#	%
	Civil	170	10.1%	198	11.7%	12	0.7%	380	22.5%
	Misdemeanor	361	21.4%	742	44.0%	71	4.2%	1174	69.6%
	Felony	31	1.8%	91	5.4%	11	0.7%	133	7.9%
	Total	562	33.3%	1031	61.1%	94	5.6%	1687	100%

County Analyses

Description of County Populations

The following table presents data on the 3-year population average for 10- to 17-year-olds and analyzes the average rate per 1,000 who were diverted in each county and statewide^{17,18}. Franklin, Kennebec, and Knox had the lowest diversion rates at 10.0, 12.6, and 12.6 respectively. Oxford, Waldo, and Piscataquis had the highest diversion rates at 17.7, 20.0, and 24.7 respectively. The average rate statewide was 14.1.

Table II-5: Diverted Youth Rates by County, 2009-2011

	Average 10 to 17-Year-Old Population per Year	Average Number Diverted per Year	Average Diversion Rate per 1,000
Lincoln	3,157	--	--
Washington	3,116	--	--
Franklin	2,968	30	10.0
Kennebec	12,127	152	12.6
Knox	3,672	46	12.6
Penobscot	14,084	183	13.0
Aroostook	7,097	97	13.6
Androscoggin	10,749	149	13.9
Statewide	130,678	1849	14.1
York	20,429	304	14.9
Cumberland	27,899	433	15.5
Hancock	4,690	76	16.2
Sagadahoc	3,454	56	16.3
Somerset	5,472	93	17.1
Oxford	6,175	109	17.7
Waldo	3,886	78	20.0
Piscataquis	1,704	42	24.7

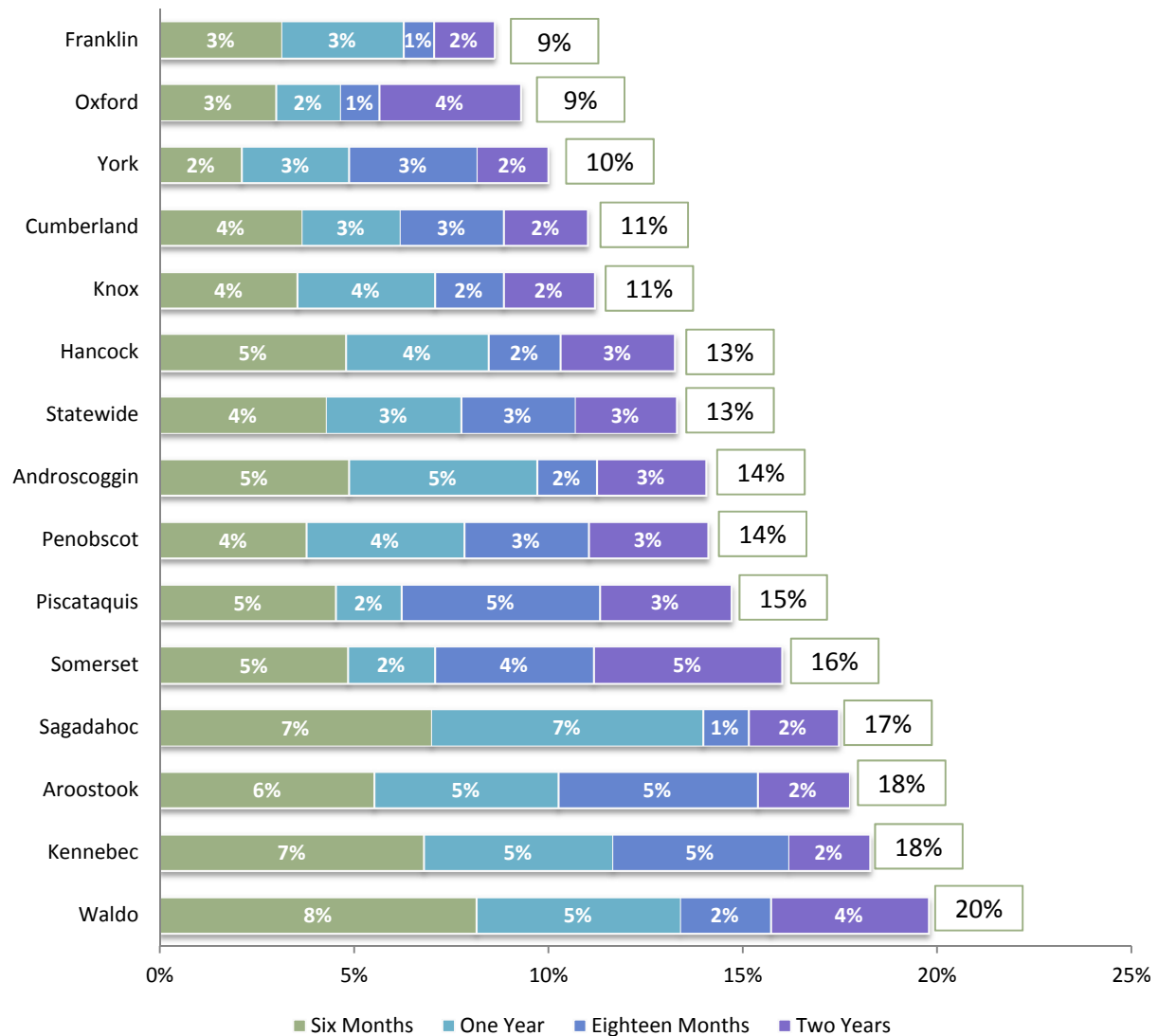
¹⁷ Three-year averages were calculated using 2009-2011 population data obtained from the Easy Access to Juvenile Populations website for youth ages 10-17, accessed at <http://www.ojdp.gov/ojstatbb/ezapop>.

¹⁸ County data were extrapolated from JCCO and JCCO office variables. No data were available for 7.2% of the 2009-2011 records. No JCCOs reported cases for Lincoln or Washington Counties; thus no data were available for these counties.

Recidivism by Time

For the 2006 to 2009 cohorts, youth in Franklin County had the lowest recidivism rate (9%), and Waldo County had the highest recidivism rate (20%). Approximately 13% of youth recidivated within the two-year tracking period statewide.

Figure II-10: Recidivism Rates by County, 2006-2009 Cohorts



One-Year Recidivism Rate by Cohort

Recidivism rates varied from county to county, but they also appear to vary considerably within any given county from year to year. In part this is due to the small number of youth who were diverted in some counties. When base numbers are small, small changes in the number of recidivating youth result in large changes in the percent. Differences in rates were statistically significant for Androscoggin County, however¹⁹. The highest rate of recidivism in Androscoggin County occurred in 2008 at 16.1%, while the lowest rate occurred in 2010 at 5.5%. Statewide, the changes in recidivism rates were not statistically significant (see Figure II-7).

Table II-6: One-Year Recidivism Rates, by Cohort

	2007	2008	2009	2010	Total
Androscoggin (n=557)	7.6%	16.1%	6.7%	5.5%	8.4%
Aroostook (n=372)	9.9%	9.7%	11.4%	10.2%	10.2%
Cumberland (n=1789)	5.2%	6.8%	6.3%	7.2%	6.4%
Franklin (n=154)	5.6%	10.6%	2.2%	7.7%	6.5%
Hancock (n=336)	7.6%	6.4%	11.1%	9.4%	8.6%
Kennebec (n=771)	9.2%	14.8%	10.8%	11.8%	11.7%
Knox (n=211)	10.3%	8.6%	1.9%	2.4%	6.2%
Oxford (n=407)	1.9%	5.3%	6.7%	1.9%	3.9%
Penobscot (n=898)	8.4%	8.7%	6.5%	5.0%	7.2%
Piscataquis (n=218)	4.2%	4.4%	9.8%	4.9%	6.0%
Sagadahoc (n=234)	10.2%	13.7%	17.7%	11.3%	13.2%
Somerset (n=353)	7.6%	6.2%	7.3%	9.5%	7.6%
Waldo (n=273)	10.0%	12.2%	16.4%	9.9%	12.1%
York (n=1081)	2.7%	5.8%	5.3%	4.4%	4.7%
Statewide (n=7654)	6.7%	8.7%	7.7%	6.9%	7.5%

¹⁹ $\chi^2(3,557) = 11.032, p = .012$; Cramer's $V = .141$

III. FIRST ADJUDICATED SUPERVISED YOUTH

Introduction

This brief analyzes data on youth who were adjudicated for the first time and placed under Department of Juvenile Services' (DJS) supervision (either in the community or in a facility) at some point during the 2006-2011 calendar years. It includes analysis of youth demographics, offense class and type, Level of Service/Case Management Inventory (YLS-CMI) completion rates and risk levels, recidivism rates²⁰, and county-level analysis. For the purpose of this report, recidivism is defined in terms of whether an adjudicated youth is re-adjudicated (as a juvenile) or convicted (as an adult) for an offense committed following placement on supervision.

2011 Cohort Description

Demographics

The 2011 cohort is the most recent cohort for which recidivism data are available. More than three-quarters (79.8%) of the youth in this cohort were male, more than two-thirds (68.8%) were between the ages of 15 and 17, and more than three-quarters (88.0%) were white. Altogether, white males between the ages of 15 and 17 composed 49.3% of the 2011 cohort. Females composed one-fifth (20.2%) of all youth in the 2011 cohort. Approximately a quarter of the youth (24.6%) were 14 or younger, whereas only 6.7% of all youth were 18 or above. Finally, minority youth composed 12.0% of the 2011 cohort.

Table III-1: Demographic Description, 2011 Cohort (n=509)

Demographics	N	%
<i>Gender</i>		
Male	406	79.8%
Female	103	20.2%
<i>Age</i>		
14 and under	125	24.6%
15	107	21.0%
16	107	21.0%
17	136	26.7%
18 and above	34	6.7%
<i>Race</i>		
White Youth	448	88.0%
All Minority Youth	59	11.6%
Unknown	2	0.4%
<i>Total Youth</i>	509	100.0%

²⁰ Civil class recidivating offenses are not included in recidivism rates in this brief.

Offense Type and Class

While youth may be charged with more than one offense at the time of supervision, only the most serious offense is reported here. The majority (84.5%) of offenses associated with supervision were misdemeanor offenses. Almost half (47.4%) of all misdemeanors were property offenses, 44.4% were personal offenses, 6.3% were drug and alcohol offenses, and 1.9% were “other” offenses²¹.

Approximately 15.3% of offenses associated with supervision were felony offenses. Almost two-thirds (64.1%) of all felonies were property offenses, a quarter (25.6%) were personal offenses, and the remaining 10.3% were drug and alcohol offenses.

Table III-2: Offense Description, 2011 Cohort (n=509)

Offenses	N	%
<i>Civil</i>		
Drugs/Alcohol	1	100%
Total Civil	1	100%
<i>Misdemeanor</i>		
Personal	191	44.4%
Property	204	47.4%
Drugs/Alcohol	27	6.3%
Other	8	1.9%
Total Misdemeanor	430	100.0%
<i>Felony</i>		
Personal	20	25.6%
Property	50	64.1%
Drugs/Alcohol	8	10.3%
Total Felony	78	100.0%
<i>Total Offenses</i>	509	100.0%

Trends

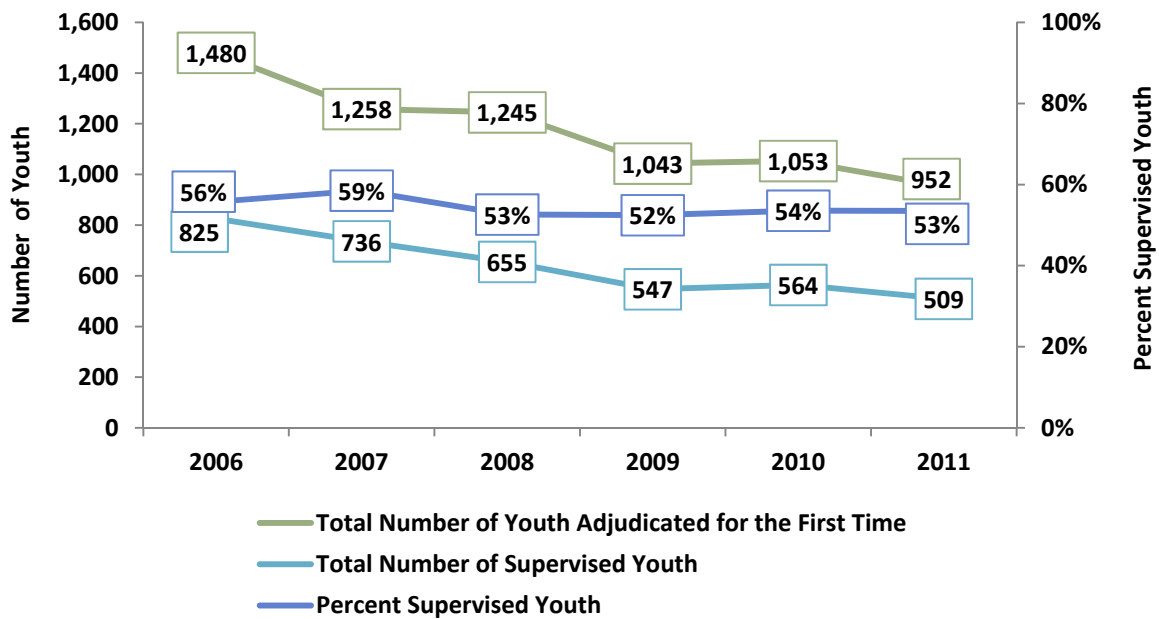
Number of Supervised Youth

The number of youth placed on supervision decreased by 38.3%, from 825 youth in 2006 to 509 youth in 2011. In part this is due to a decrease in the number of youth adjudicated for the first time. From 2006 to 2011, the number of these youth decreased by 35.7% (from 1,480 youth to 952). However, the proportion of first adjudicated youth who were placed in supervision also changed slightly over the years of analysis, and while the relationship between cohort year and proportion of supervised youth is weak, the changes are statistically significant²². The highest proportion of first adjudicated youth placed on supervision was 58.5% in 2007. The lowest proportion was 52.4% in 2009. In 2011, the proportion of first adjudicated youth on supervision was 53.5%.

²¹ “Other” offenses include administrative offenses (such as obstructing report of a crime), animal welfare offenses, attempts to commit a crime, falsification, and weapons offenses (such as carrying a concealed weapon).

²² $\chi^2(5, 7031) = 13.41, p = .020$; Cramer’s $V = .044$

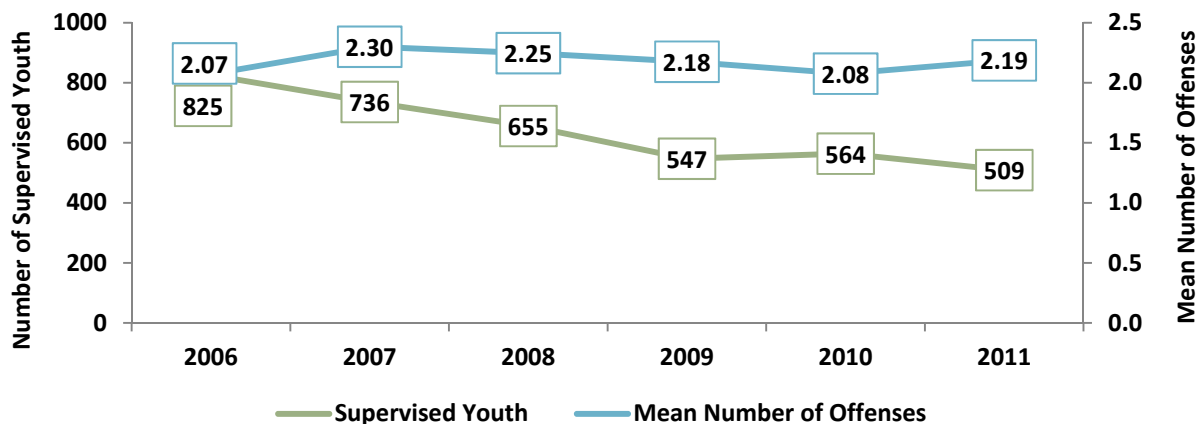
Figure III-1: Youth Adjudicated for the First Time and Total Number of Supervised Youth, by Cohort



Number of Offenses

The mean number of offenses has remained relatively unchanged from one year to the next. The average number of offenses from 2006 to 2011 was 2.18. The 2011 cohort consisted of 509 youth with a mean number of 2.19 offenses committed per youth²³. The median (or middle) number of offenses was 1; likewise the mode (the most frequently occurring value) was 1. In 2011, 52.1% of youth were charged with 1 offense.

Figure III-2: Supervised Youth and Mean Number of Offenses, by Cohort

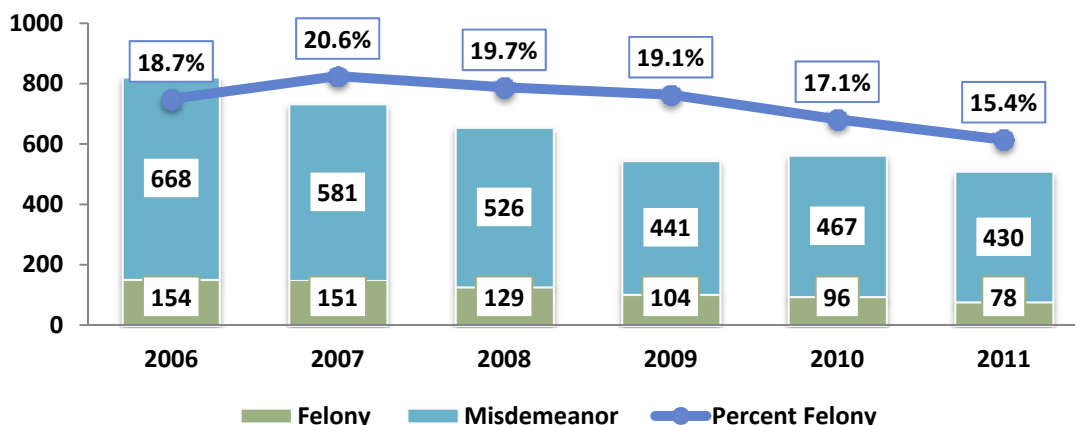


²³ It bears mentioning that while the mean is an interesting statistic it is highly skewed in this analysis. While the majority of youth (92.9%) were charged with 4 or fewer offenses, a small proportion were charged with a substantial number of offenses, which drove the average upward.

Offense Class

While youth may be charged with more than one offense at the time of adjudication, only the most serious charge associated with each youth is reported in the remainder of this brief. From 2006 to 2011, the number of felony charges decreased by almost half (49.4%), while the number of misdemeanor charges decreased by 35.6%. The proportion of felony and misdemeanor charges fluctuated slightly over the years of analysis, but these changes are not statistically significant²⁴. Youth with felony charges accounted for 18.7% of supervised youth in 2006 and 15.4% in 2011²⁵.

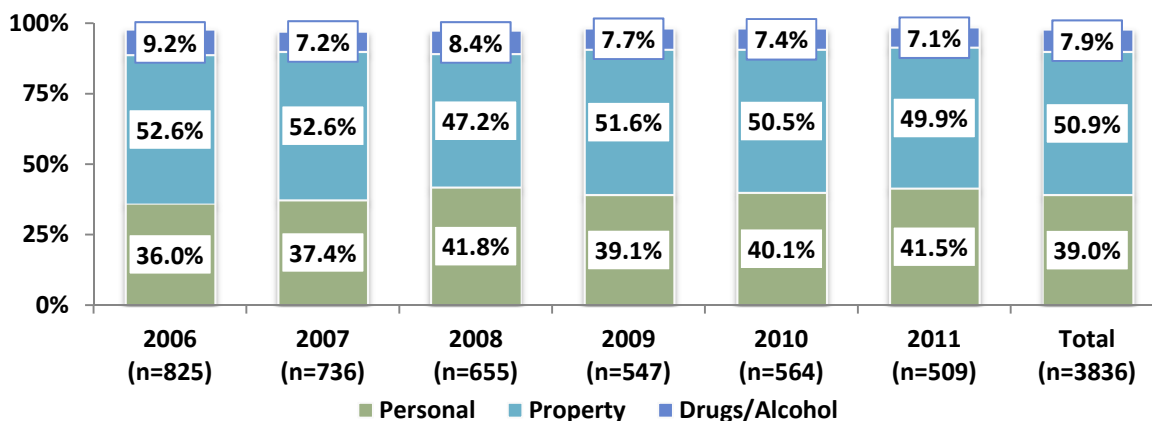
Figure III-3: Offense Class of Most Serious Offense, by Cohort



Offense Type

Approximately half (50.9%) of the most serious offenses associated with supervision over all 6 cohort years were property offenses. An additional 39.0% of most serious offenses were personal offenses, and 7.9% were drug and alcohol offenses.

Figure III-4: Distribution of Offense Type (Most Serious Offense), by Cohort



Note: Percentages do not equal 100% due to the exclusion of "other" offense types.

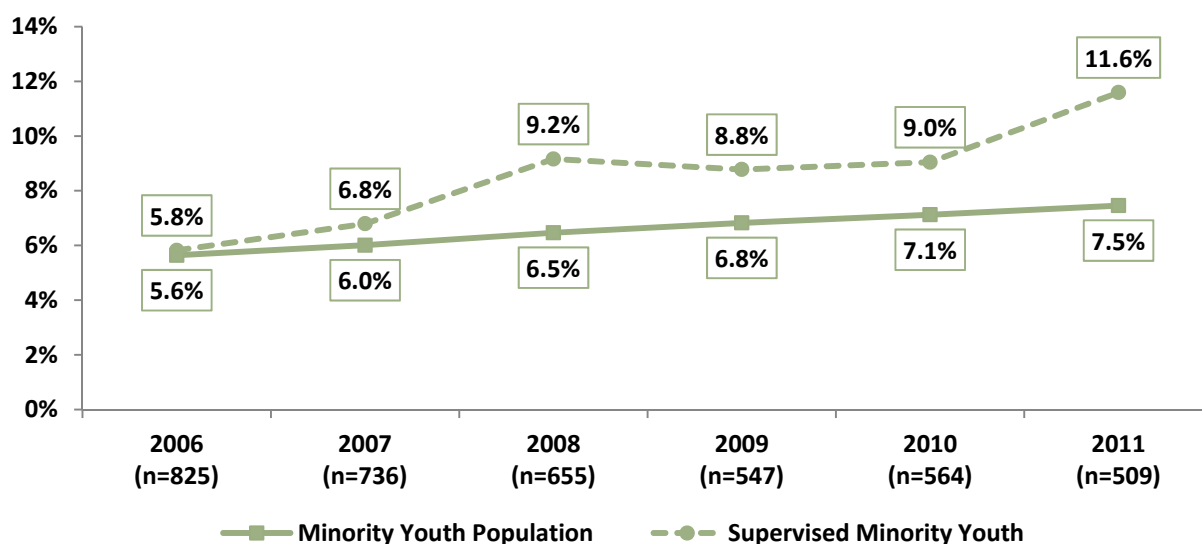
²⁴ $\chi^2 (5, 3825) = 7.023, p = .219$

²⁵ Cases in which civil charges are the most serious offense are small in number and have not been included in this analysis.

Race

Among the cohort years, the 2011 cohort had the largest percentage of minority youth (11.6%), while the 2006 cohort had the smallest percentage (5.8%). The differences in the percentage of minority youth from one cohort to another are statistically significant²⁶ and are the result of two separate trends. First, the number of minority youth in the cohorts increased by 23% from 2006 to 2011 (from 48 to 59), and second, the overall number of youth in the cohorts decreased by 38% during that time period (from 825 to 509). Furthermore, the increase in the number of minority youth in the cohorts was not due to an increase in the minority population in Maine. While the proportion of minority youth in the state increased over the analysis time period, it increased at a much lower rate, from 5.6% of the youth population in 2006 to 7.5% in 2011²⁷.

Figure III-5: Percent Minority Youth in Cohorts vs. Percent Minority Youth in Population



Recidivism

One-Year Rates

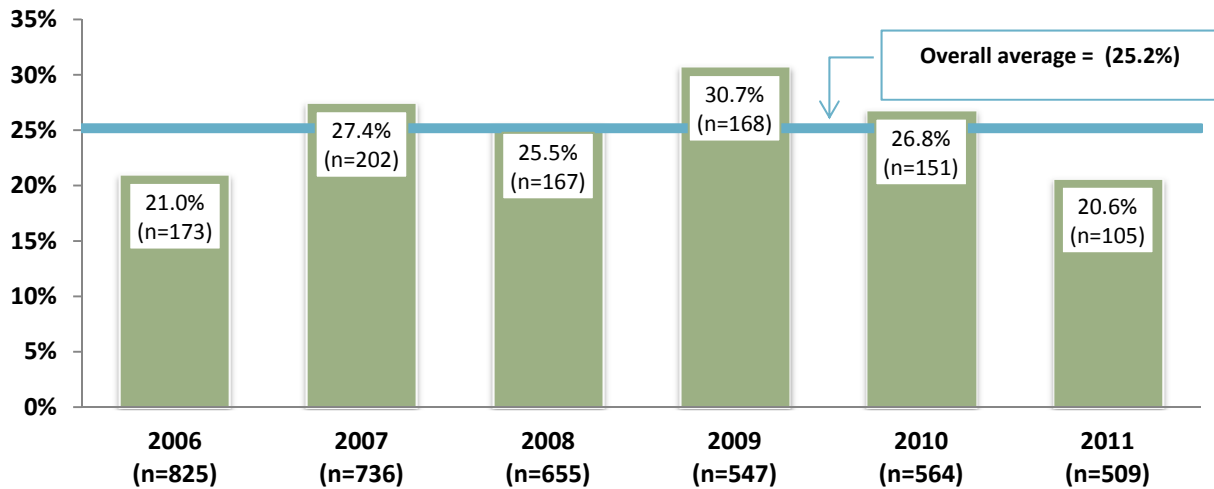
One-year recidivism rates vary from 21.0% for the 2006 cohort to 26.8% for the 2010 cohort. The differences in recidivism among the years from 2006 through 2010 are statistically significant²⁸. While the rate for the 2011 cohort is currently 20.6%, the rate may change as updates become available.

²⁶ $\chi^2 (5, 3808) = 17.794, p = .004; \Phi = .068$

²⁷ Population data were obtained from the Easy Access to Juvenile Populations website for youth ages 10-17, accessed at <http://www.ojdp.gov/ojstatbb/ezapop>.

²⁸ $\chi^2 (4, 3327) = 18.25, p = .001; \Phi = .074$

Figure III-6: One-Year Recidivism, by Cohort

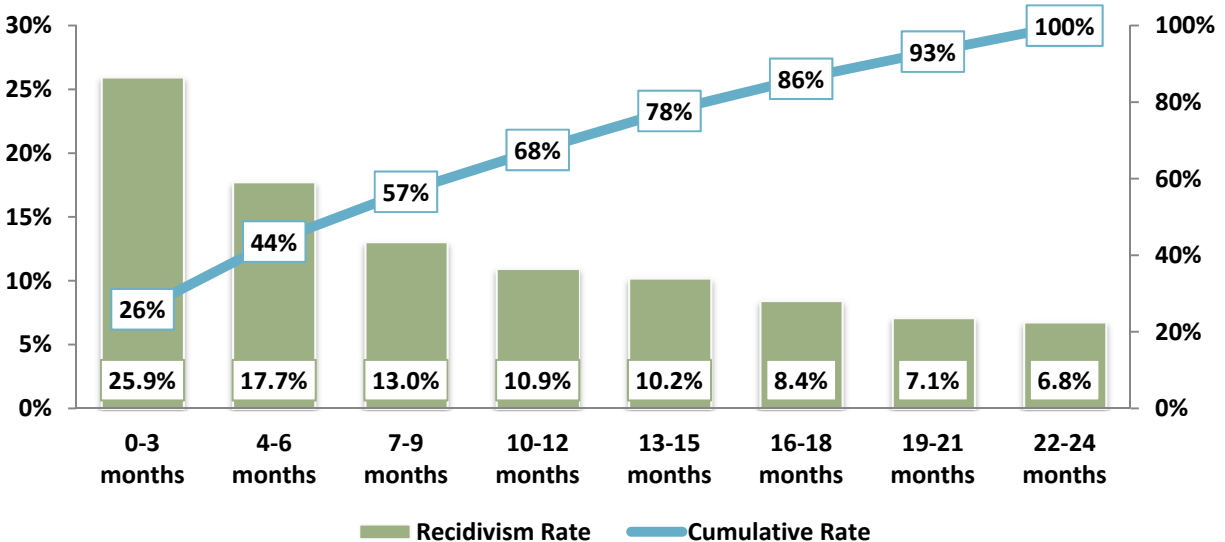


Note: Recidivism rate for 2006 cohort may be higher than rate displayed in chart because no updates were provided for this cohort. Rate for the 2011 cohort may change as updates become available.

Time to Recidivate

Slightly more than one-quarter of all youth who recidivated within the two-year tracking period did so within the first 3 months (26%). More than half (58%) recidivated within 9 months, and more than three-quarters (78%) recidivated within 14 months. Each consecutive recidivism rate is lower than the previous one, indicating that fewer youth recidivate as time progresses.

Figure III-7: Time to Recidivate, 2006-2009 Cohorts



Time to Recidivate by Cohort (2006-2011)

The following table presents numbers and rates of recidivism for each cohort at the six-month, one-year, eighteen-month, and two-year time marks.

Because it has not quite been two years for the 2011 cohort, the numbers provided for that cohort are incomplete. Civil cases were not included in these rates.

Table III-3: Recidivism by Time, 2006-2011 Cohorts

	Six Months		One Year		Eighteen Months		Two Years		Did Not Recidivate		Total	
	#	%	#	%	#	%	#	%	#	%	#	%
2006 Cohort	95	11.5%	56	6.8%	51	6.2%	26	3.2%	597	72.4%	825	100%
2007 Cohort	114	15.5%	65	8.8%	49	6.7%	39	5.3%	469	63.7%	736	100%
2008 Cohort	89	13.6%	56	8.5%	45	6.9%	38	5.8%	427	65.2%	655	100%
2009 Cohort	101	18.5%	43	7.9%	25	4.6%	24	4.4%	354	64.7%	547	100%
2010 Cohort*	82	14.5%	54	9.6%	21	3.7%	7	1.2%	400	70.9%	564	100%
2011 Cohort**	72	14.1%	16	3.1%	5	1.0%	0	0.0%	416	81.7%	509	100%

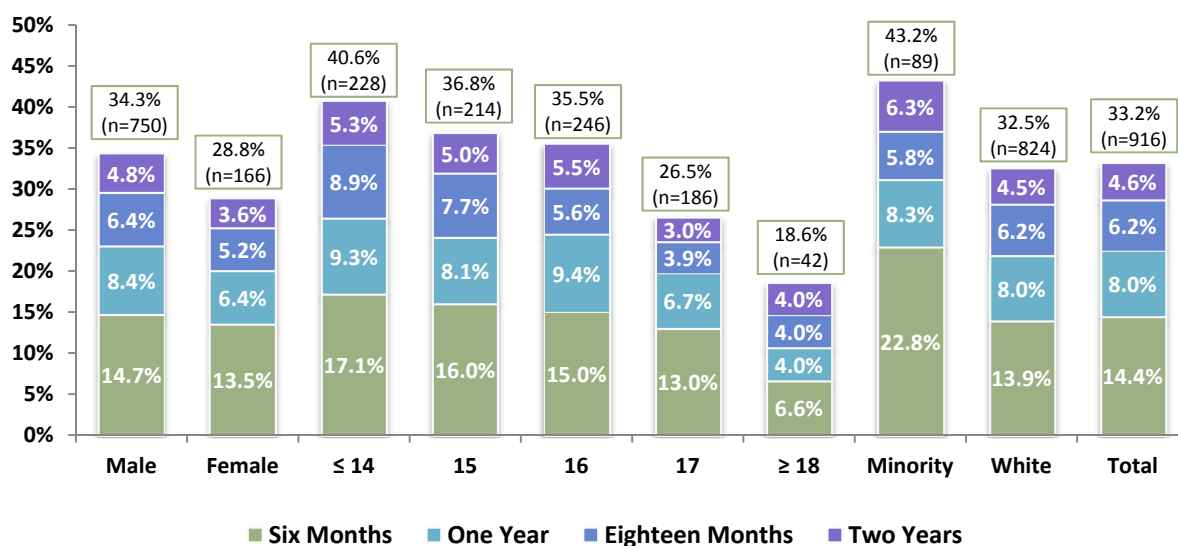
* Eighteen month and two-year recidivism rates for the 2010 cohort are expected to change as updates are made.

** One-year, eighteen-month, and two-year recidivism rates for the 2011 cohort are expected to change as updates are made.

Recidivism by Demographic Characteristics

The 2009 cohort is the most recent year for which recidivism data are *not* expected to change with updates. For the 2006-2009 cohorts, youth who were placed on supervision at 14 years of age and younger recidivated at a slightly higher rate (40.6%) than youth in all other age groups, and these differences were statistically significant²⁹. Males recidivated at a higher rate (34.3%) than females (28.8%), and minority youth recidivated at a higher rate (43.2%) than white youth (32.5%), but these differences were not statistically significant. The overall rate of recidivism was 33.2%.

Figure III-8: Recidivism by Demographic Characteristics, 2006-2009 Cohorts



²⁹ $\chi^2(4, 2743) = 15.25, p = .004; \text{Phi} = .075$

Recidivism and Offense Class³⁰

For youth who recidivated, the percentage of misdemeanors and felonies decreased between first adjudicated offense and recidivating offense. The majority (81.7%) of all recidivating youth were initially charged with misdemeanor offenses. The percentage of youth who recidivated with misdemeanor charges was 71.2%. An additional 18.1% of recidivating youth were initially charged with felony offenses, and the percentage of youth who recidivated with felony charges was 16.3%. Thus, there were decreases in both misdemeanor and felony charges. Conversely, there was an increase in the proportion of youth charged with civil offenses. Initially a small proportion of youth (0.3%) were charged with civil offenses, while a larger proportion (12.6%) of recidivating youth were charged with civil offenses.

Table III-4: First Adjudicated Offense Class vs. Recidivating Offense Class, 2006-2011 Cohorts

		First Adjudicated Offense Class							
		<i>Civil</i>		<i>Misdemeanor</i>		<i>Felony</i>		<i>Total</i>	
		#	%	#	%	#	%	#	%
Recidivating Offense Class	<i>Civil</i>	1	0.1%	174	10.9%	26	1.6%	201	12.6%
	<i>Misdemeanor</i>	2	0.1%	957	59.8%	180	11.3%	1139	71.2%
	<i>Felony</i>	1	0.1%	176	11.0%	83	5.2%	260	16.3%
	Total	4	0.3%	1307	81.7%	289	18.1%	1600	100%

³⁰ The numbers reported here are slightly higher than numbers reported elsewhere in this brief because this analysis includes all youth for whom recidivating data are available regardless of time to recidivate. Some youth recidivated past the 2-year tracking period.

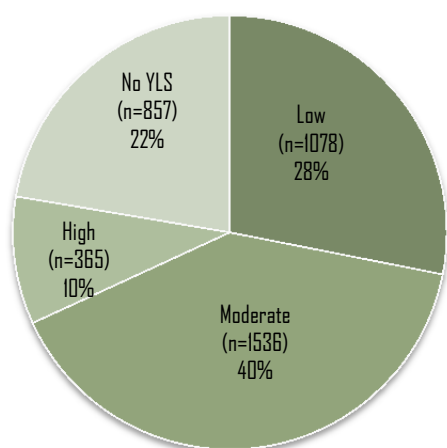
Recidivism by Risk Level

Completion rates for the Youth Level of Service/Case Management Inventory (YLS-CMI)³¹ for supervised youth hovered between 75% and 79% over the years of analysis, with an overall rate of 78%.

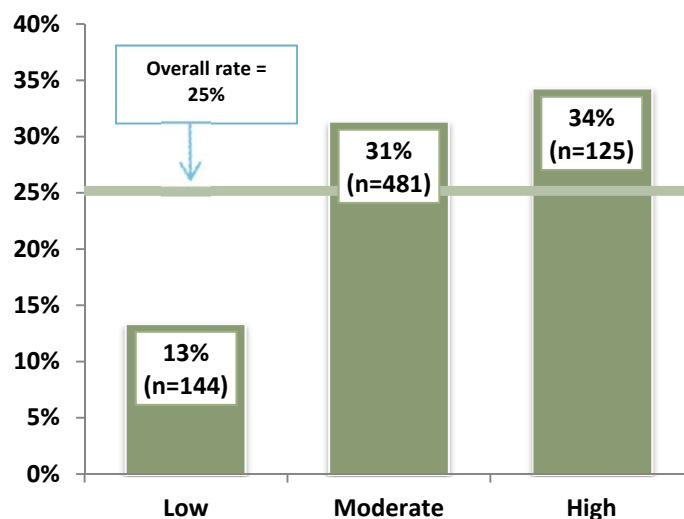
Of those youth who were assessed, approximately 36% were assessed at low risk, 53% were assessed at moderate risk, and 12% were assessed at high risk. The average risk score was 12.3.

Of those youth were assessed, approximately 25% recidivated. There were, however, statistically significant differences in the rate of recidivism by risk level³². Approximately 13% of youth who had low risk scores recidivated, 31% of youth with moderate risk scores recidivated, and 34% of youth with high risk scores recidivated.

**Figure III-9: Distribution of Risk Levels
2006-2011 Cohorts**



**Figure III-10: One-Year Recidivism by Risk Level
2006-2011 Cohorts**



³¹ The YLS-CMI is a risk/needs assessment and case management tool designed for use with youth.

³² $\chi^2 (2, 2979) = 126.595, p < .001; \Phi = .206$

Recidivism by Risk Level and Gender

There were differences between males and females in terms of risk scores and levels. The average score for males was 11.87, while the average score for females was 14.02. This difference is statistically significant³³. While females scored higher on the risk assessment, they recidivated at a lower rate (23%) compared to males (26%). Although higher YLS risk levels are correlated with higher rates of recidivism for both genders, the correlation is stronger with for males³⁴, indicating that the tool is more predictive with a male population.

Figure III-11: Distribution of Risk Levels by Gender, 2006-2011 Cohorts

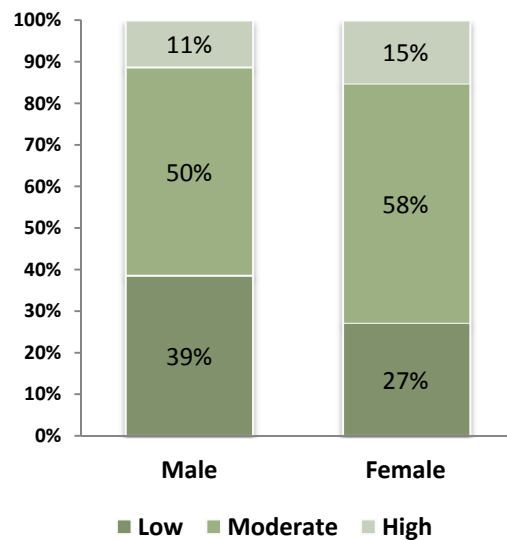
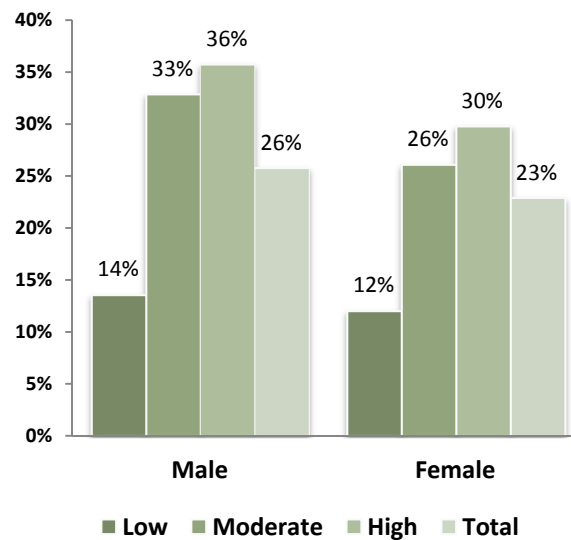


Figure III-12: One-Year Recidivism by Gender and Risk Level, 2006-2011 Cohorts



³³ Independent t-test: $t(2977) = -6.061, p < .001$

³⁴ Male: $\chi^2(2, 2367) = 115.95, p < .001, \Phi = .221$; Female: $\chi^2(2, 2979) = 15.70, p < .001, \Phi = .160$

Recidivism by Risk Level and Race/Ethnicity

There were also differences between white and minority youth in risk score and level. The average risk score for white youth was 12.09, while the average score for minority youth was 14.99. This is a statistically significant difference³⁵. As would have been expected given the group's higher average score, minority youth recidivated at a higher rate (29%) than white youth (25%). Among minority youth, however, moderate level youth recidivated at a higher rate (37%) than high level youth (30%), which could suggest that the tool is not as accurate with minority youth.

Figure III-13: Distribution of Risk Levels by Race, 2006-2011 Cohorts

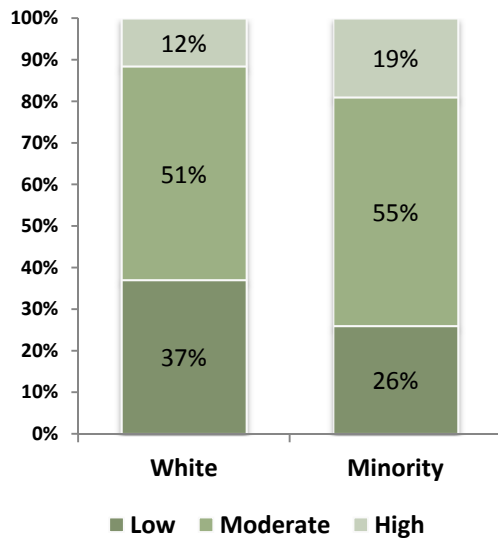
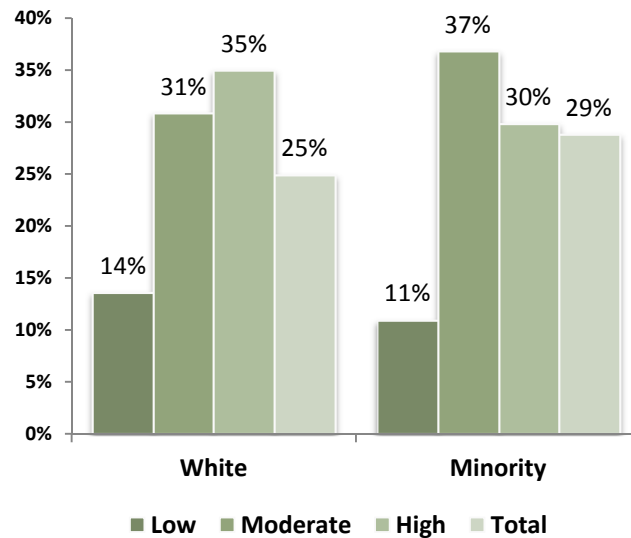


Figure III-14: One-Year Recidivism by Race and Risk Level, 2006-2011 Cohorts



³⁵ Independent t-test: $t(2958) = 5.57, p < .001$

County Analyses

Description of County Populations (2009-2011 Average)

The following table presents data on the 3-year population average for 10- to 17-year-olds³⁶ and analyzes the average rate per 1,000 juveniles who were first adjudicated and supervised in each county and statewide. Oxford, Penobscot, and Androscoggin had the lowest supervision rates at 1.1, 2.3, and 3.0 respectively. Somerset, Waldo, Lincoln, and Sagadahoc had the highest supervision rates at 5.9, 5.9, 6.4, and 10.8 respectively.

Table III-5: First Adjudicated and Supervised Youth Rates, by County, 2009-2011

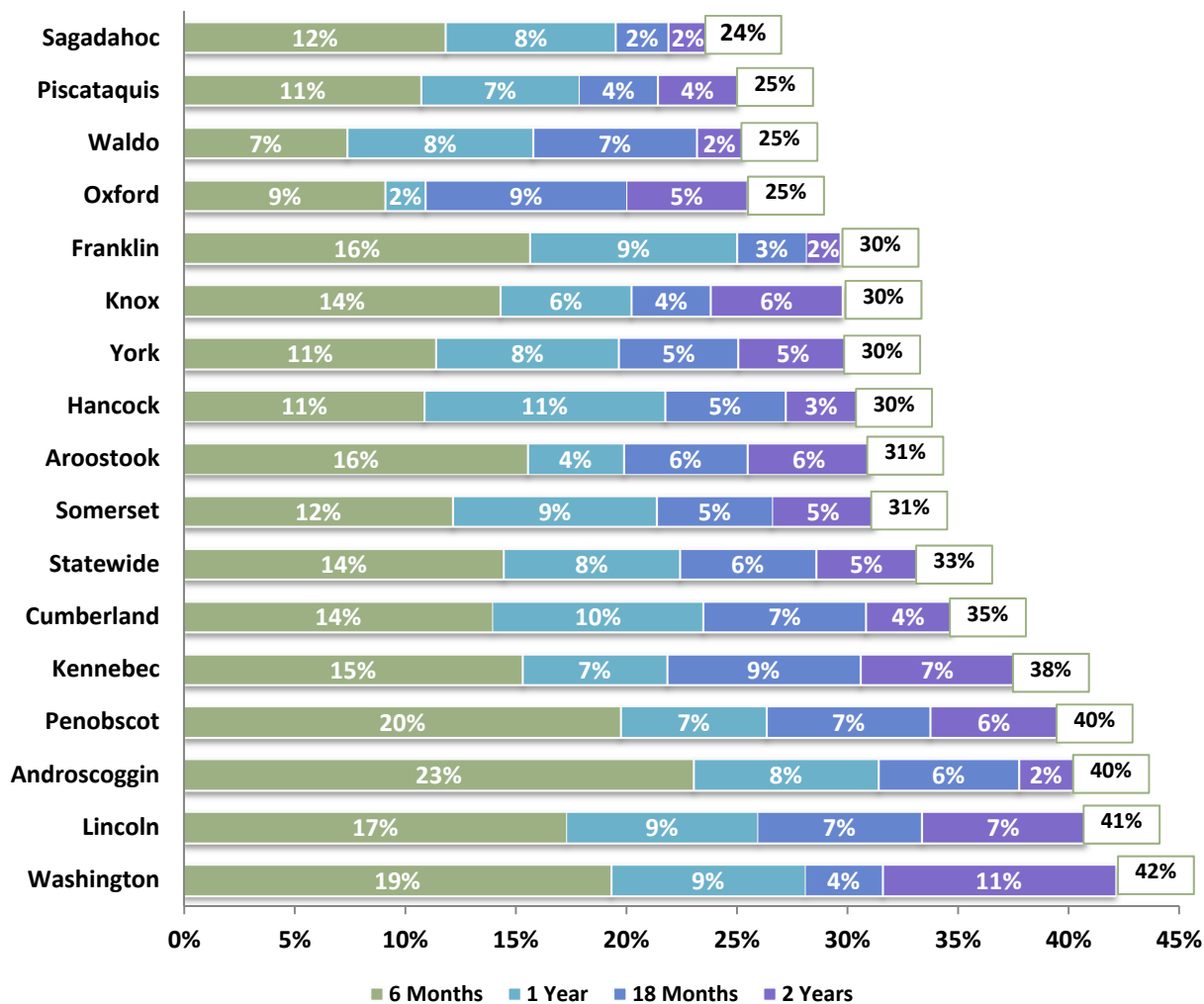
	Average 10- to 17-Year- Old Population per Year	Average Number First Adjudicated per Year	Average Number Supervised per Year	Average First Adjudicated Rate per 1,000	Average Supervised Rate per 1,000
Oxford	6,175	24	7	3.9	1.1
Penobscot	14,084	79	33	5.6	2.3
Androscoggin	10,749	115	32	10.7	3.0
Piscataquis	1,704	13	5	7.4	3.1
Franklin	2968	23	10	7.6	3.3
Cumberland	27,899	177	93	6.3	3.3
Hancock	4,690	45	17	9.7	3.7
Washington	3,116	32	12	10.3	3.7
Statewide	130,678	1,016	540	7.8	4.1
Knox	3,672	35	18	9.4	5.0
York	20,429	122	102	6.0	5.0
Aroostook	7,097	56	36	7.9	5.1
Kennebec	12,127	115	62	9.5	5.1
Somerset	5,472	61	32	11.1	5.9
Waldo	3,886	41	23	10.5	5.9
Lincoln	3,157	26	20	8.1	6.4
Sagadahoc	3,454	54	37	15.6	10.8

³⁶ Three-year averages were calculated using 2009-2011 population data obtained from the Easy Access to Juvenile Populations website for youth ages 10-17, accessed at <http://www.ojdp.gov/ojstatbb/ezapop>.

Recidivism by Time

For the 2006 to 2009 cohorts, youth in Sagadahoc County had the lowest recidivism rates (23.7%), and Washington County had the highest rates (42.1%). Approximately one-third (33.2%) of all youth recidivated statewide (34.0%).

Figure III-15 : Recidivism Rates by County, 2006-2009 Cohorts



One-Year Recidivism Rate by Cohort

Recidivism rates varied from county to county, but they also varied considerably within any given county from year to year. In part this is due to the small number of youth who were adjudicated and supervised in some counties. When base numbers are small, small changes in the number of recidivating youth result in large changes in the percent. Nevertheless, there were real changes in the one-year recidivism rate from one year to another, as evidenced by statewide rates (see Figure III-6).

Table III-6: One-Year Recidivism Rates, by Cohort

County (total # tracked)	2006	2007	2008	2009	2010	Total
Androscoggin (n=227)	27.3%	33.9%	44.4%	37.5%	17.4%	32.6%
Aroostook (n=204)	9.8%	25.7%	35.3%	26.5%	34.9%	27.0%
Cumberland (n=648)	23.8%	29.2%	29.9%	23.3%	30.1%	27.3%
Franklin (n=77)	23.8%	52.6%	33.3%	0.0%	7.7%	28.6%
Hancock (n=107)	25.0%	20.7%	15.4%	34.6%	20.0%	24.3%
Kennebec (n=296)	20.3%	28.6%	18.0%	37.9%	32.8%	28.0%
Knox (n=104)	10.7%	27.3%	33.3%	30.0%	30.0%	25.0%
Lincoln (n=99)	19.0%	17.6%	25.0%	44.4%	5.6%	24.2%
Oxford (n=64)	5.6%	21.7%	0.0%	20.0%	22.2%	14.1%
Penobscot (n=276)	25.6%	32.9%	21.4%	47.2%	27.3%	29.7%
Piscataquis (n=32)	27.3%	37.5%	0.0%	0.0%	25.0%	21.9%
Sagadahoc (n=218)	22.0%	24.4%	26.3%	13.9%	32.7%	24.3%
Somerset (n=200)	17.0%	33.3%	15.9%	32.6%	25.9%	24.0%
Waldo (n=111)	23.8%	20.0%	9.5%	28.6%	12.5%	19.8%
Washington (n=70)	22.2%	27.3%	27.8%	60.0%	7.7%	27.1%
York (n=594)	19.0%	20.6%	22.2%	26.4%	27.0%	22.6%
Statewide (n=3327)	21.0%	27.4%	25.5%	30.7%	26.8%	25.9%

IV. COMMITTED YOUTH

Introduction

This brief analyzes data on youth who were found delinquent in a juvenile court and subsequently placed in a secure juvenile facility for the first time at some point during the 2006-2011 calendar years. It includes analysis of youth demographics, offense class and type, Level of Service/Case Management Inventory (YLS-CMI) completion rates and risk levels, recidivism rates³⁷, and county-level analysis. For the purpose of this report, recidivism is defined in terms of whether an adjudicated youth is re-adjudicated (as a juvenile) or convicted (as an adult) for an offense committed following initial discharge.

2006-2011 Cohorts Description

Demographics

Approximately 88.1% of the youth in the 2006-2011 cohorts were male, while 11.9% were female. The largest age group was 17-year-olds at 37.1%, followed by 16-year-olds at 24.6%, youth ages 18 and above at 19.7%, 15-year-olds at 13.2%, and youth 14 and younger at 5.4%. White youth made up 83.4% of committed youth, while minority youth made up the remaining 16.6%.

Table IV-1: Demographic Description, 2006-2011 Cohorts

Demographics	#	%
Gender		
Male	527	88.1%
Female	71	11.9%
Age		
14 and under	32	5.4%
15	79	13.2%
16	147	24.6%
17	222	37.1%
18 and above	118	19.7%
Race		
White	499	83.4%
All Other Races	99	16.6%
Total Youth	598	100.0%

Offense Class and Type

While youth may be charged with more than one offense at the time of supervision, only the most serious offense is reported here. The majority (55.4%) of offenses associated with commitment were misdemeanor offenses.

³⁷ Civil class recidivating offenses are not included in recidivism rates in this brief.

Approximately 46.5% of all misdemeanors were property offenses, 41.7% were personal offenses, 4.2% were drug and alcohol offenses, and 7.6% were “other” offenses³⁸. The remaining 44.6% of offenses associated with commitment were felony offenses. More than half (55.4%) of felony offenses were property offenses, 35.2% were personal offenses, 6% were drug and alcohol offenses, and 3.4% were “other” offenses.

Table IV-2: Offense Description, 2006-2011 Cohort

Offenses	#	%
<i>Misdemeanor</i>		
Personal	138	41.7%
Property	154	46.5%
Drugs/Alcohol	14	4.2%
Other	25	7.6%
Total Misdemeanor	331	100.0%
<i>Felony</i>		
Personal	94	35.2%
Property	148	55.4%
Drugs/Alcohol	16	6.0%
Other	9	3.4%
Total Felony	267	100.0%
Total Offenses	598	100.0%

Commitment Outcomes and Pathways

There were three possible outcomes for the youth that composed this dataset at the time of its extraction: They were discharged (79%), in a juvenile facility (14%), or they were released to community reintegration (7%).

Table IV-3: Youth Outcomes at End of Study Period, 2006-2011 Cohorts

Outcomes		
7%	39	Currently on Community Reintegration
14%	85	Currently in Facility
79%	474	Discharged
100%	598	Total

There are a number of pathways to these three outcomes. Youth who were discharged may have been given a straight discharge, or they may have been released to community reintegration first. Having been released to community reintegration, they may or may not have returned to the commitment facility (one or more times).

³⁸ “Other” offenses include carrying concealed weapon, refusing to submit to arrest or detention, eluding an officer, etc.

Youth who were in a facility at the time of the data extraction may not have been released to community reintegration, or they have been returned from it (one or more times). Finally, those on community reintegration may have been release once or a number of times.

Table IV-4: Pathways through Commitment, 2006-2011 Cohorts

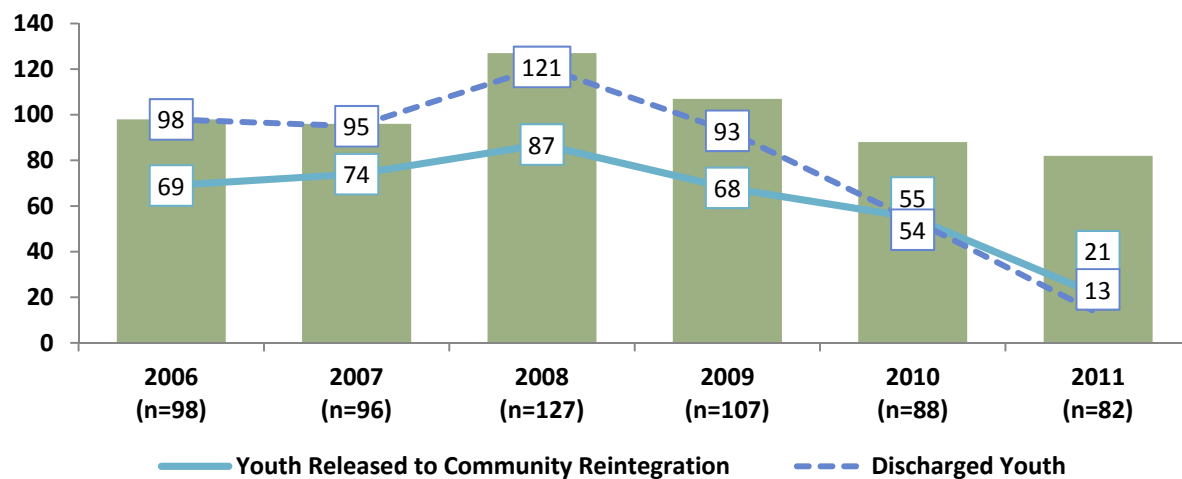
Pathways		
27%	164	Community reintegration, no returns, discharged
26%	155	Community reintegration, returned (1 or more times), discharged
26%	155	No community reintegration, straight discharge
12%	69	No community reintegration, in facility
6%	34	Community reintegration, no returns, in community
3%	16	Community reintegration, returned (1 or more times), in facility
1%	5	Community reintegration, returned (1 or more times), in community
100%	598	Total

Trends

Number of Youth Committed, on Community Reintegration, and Discharged

While the number of committed youth increased by 29.6% from 2006 to 2008 (from 98 to 127), the number decreased by 35.4% in the years that followed (to 82 in 2011). These two trends created an overall decrease of 16.3% in the number of youth committed over the years of study. The number of youth released to community reintegration will likely change for the 2010 and 2011 cohorts³⁹, but for the 2006 to 2009 cohorts the proportion of youth released to community reintegration remained relatively unchanged at 69.6%. The number of discharged youth will continue to change until all youth are eventually discharged from the juvenile system. Approximately 4.7% of the 2009 cohort remained committed at the end of the study period, 9.1% of the 2010 cohort remained committed, and 67.1% of the 2011 cohort remained committed.

Figure IV-1: Number of Youth Committed, on Community Reintegration, and Discharged; 2006-2011 Cohorts



Commitment Facility

Overall, approximately 59% of committed youth were placed at Long Creek Youth Development Center (LCYDC), while 41% were placed at Mountain View Youth Development Center (MVYDC). While the number of youth committed at each facility has fluctuated over the years of study, the distribution of youth between the two facilities has not changed significantly.

Table IV-5: Commitment Facility, 2006-2011 Cohorts

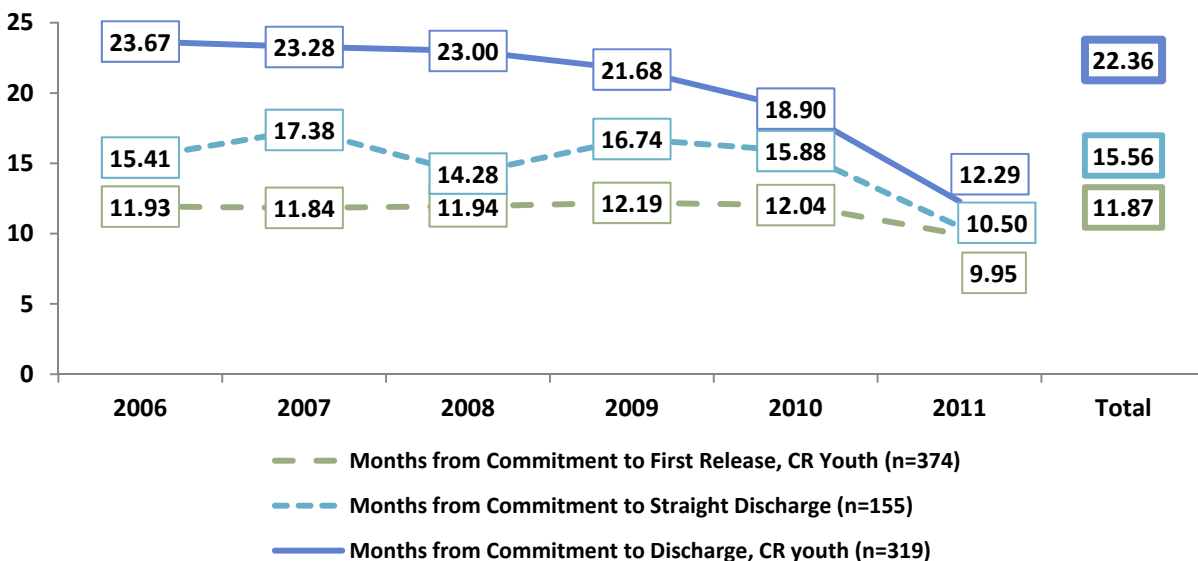
	2006		2007		2008		2009		2010		2011		Total	
	#	%	#	%	#	%	#	%	#	%	#	%	#	%
LCYDC	51	52%	58	60%	81	64%	64	60%	48	55%	52	63%	354	59%
MVYDC	47	48%	38	40%	46	36%	43	40%	40	45%	30	37%	244	41%
Total	98	100%	96	100%	127	100%	107	100%	88	100%	82	100%	598	100%

³⁹ A number of committed youth who had not been released to community reintegration by the end of the study period likely will be before they are discharged.

Time Spent in Commitment

Of all youth who were committed, 374 were released to community reintegration. These youth typically spent an average of 11.87 months committed prior to community reintegration. Of the 374 who were released to community reintegration, 319 were discharged within the analysis timeframe. These youth typically spent 22.36 months under supervision (in a facility and within the community) before discharge. An additional 155 youth were not released to community reintegration but were given a straight discharge, and these youth typically spent 15.56 months committed prior to discharge. Thus, youth who were given a straight discharge spent approximately 6.80 fewer months on supervision compared to youth who were released to community reintegration. Numbers for the 2010 and 2011 cohorts are likely to increase since only those youth who are committed for shorter periods of time were discharged as of the time of data extraction.

Figure IV-2: Time Spent Committed, 2006-2011 Cohorts

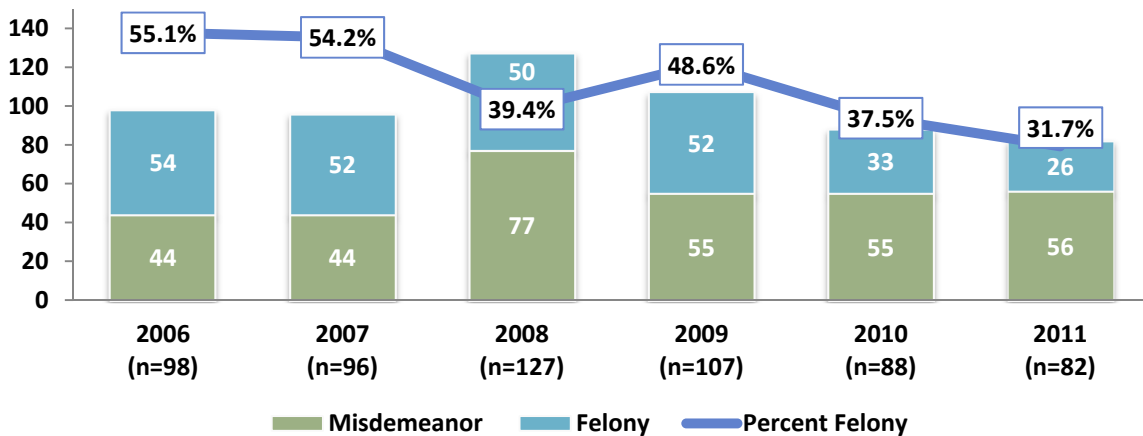


Offense Class

While youth may be charged with more than one offense at the time of adjudication, only the most serious charge associated commitment is reported in this brief. In 2006, a little more than half (55.1%) of youth were committed for felonies. By 2011, that proportion had decreased to 31.7%. These two years represent the two extremes of the distribution, and the changes over all the years of analysis are statistically significant⁴⁰.

⁴⁰ $\chi^2(5, 598) = 17.336, p = .004; \text{Phi} = .170$

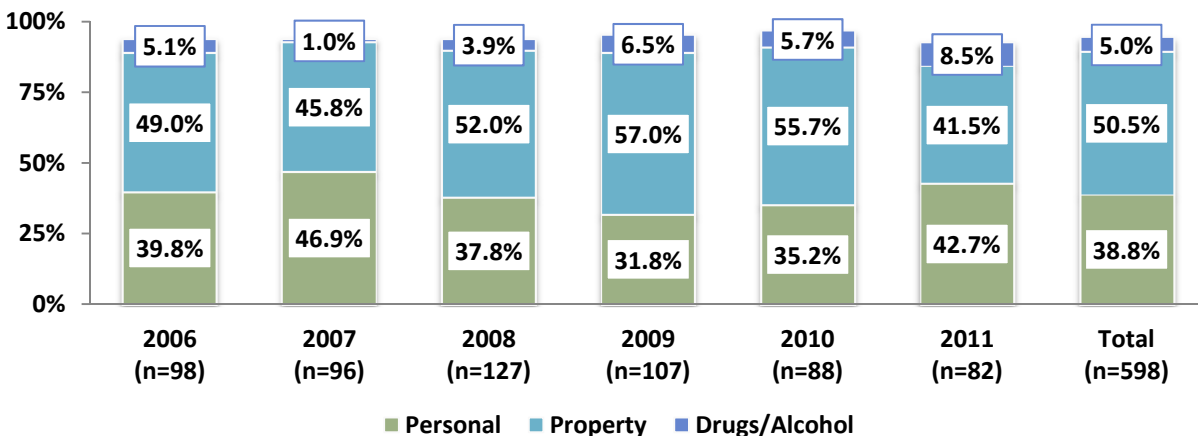
Figure IV-3: Offense Class, 2006-2011 Cohorts



Offense Type

By offense type, approximately half (50.5%) of the most serious offenses associated with commitment over all 6 cohort years were property offenses. An additional 38.8% of most serious offenses were personal offenses, and 5.0% were drug and alcohol offenses.

Figure IV-4: Offense Types, 2006-2011 Cohorts



Note: Percentages do not equal 100% due to the exclusion of "other" offenses.

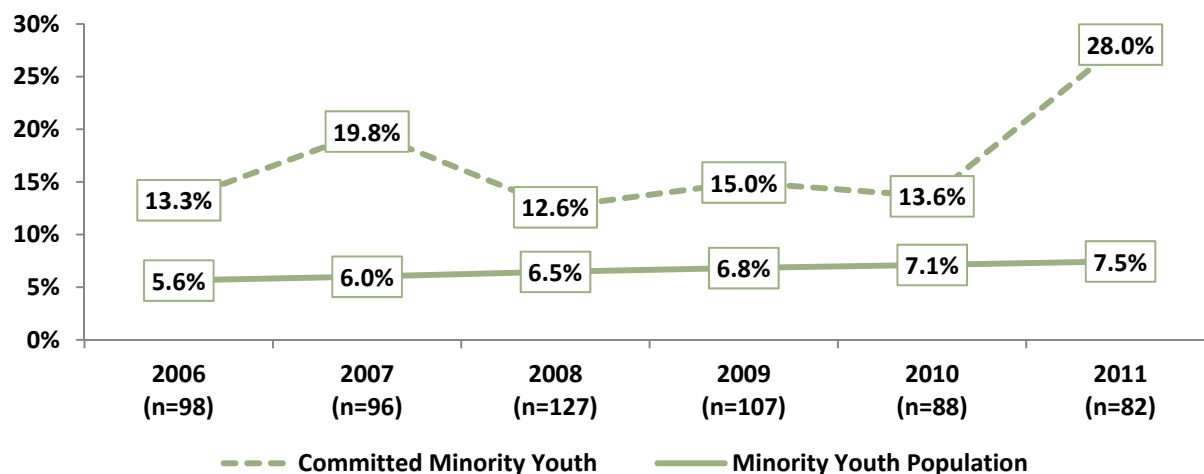
Race

Among the cohorts, the 2011 cohort had the largest percentage of minority youth (28.0%), while the 2008 cohort had the smallest percentage (12.6%). The differences in the percentage of minority youth from one cohort to another are statistically significant⁴¹ and are the result of two separate trends. First, the number of minority youth in the cohorts increased by 77% from 2006 to 2011 (from 13 to 23), and second, the overall number of youth in the cohorts decreased by 16% during that time period (from 98 to 82). Furthermore, the increase in the number of minority youth in the cohorts was not due to an increase in the minority population in Maine.

⁴¹ $\chi^2(5, 598) = 11.518, p = .042; \text{Phi} = .139$

While the proportion of minority youth in the state increased over the analysis time period, it increased at a much lower rate, from 5.6% of the population in 2006 to 7.5% in 2011⁴².

Figure IV-5: Percent Minority Youth in Cohorts vs. Percent Minority Youth in Maine Population, 2006-2011 Cohorts



Correlations

Demographic Characteristics and Offense Class⁴³

There were differences in the proportion of youth committed for misdemeanors by demographic characteristic. Overall, 55.4% of youth were committed for misdemeanor offenses. For females, however, the proportion was 74.6% compared to males at 52.8%. This difference is statistically significant⁴⁴. There were differences by age as well. At 78.1%, youth ages 14 and younger were also more likely than older youth to be committed for misdemeanor offenses⁴⁵. Finally, there were differences by race. At 56.9%, white youth were more likely than minority youth to be committed for a misdemeanor⁴⁶.

The difference in offense class between males and females can perhaps be explained by a difference in offense type. While females were more likely than males to be committed for misdemeanor offenses, their misdemeanor offenses were more likely than males' to be personal offenses. Approximately 59% of females' misdemeanor offenses were personal, compared to 45% of males'. Differences in offense class between age and race groups cannot be explained by differences in offense type.

⁴² Population data were obtained from the Easy Access to Juvenile Populations website for youth ages 10-17, accessed at <http://www.ojjdp.gov/ojstatbb/ezapop>.

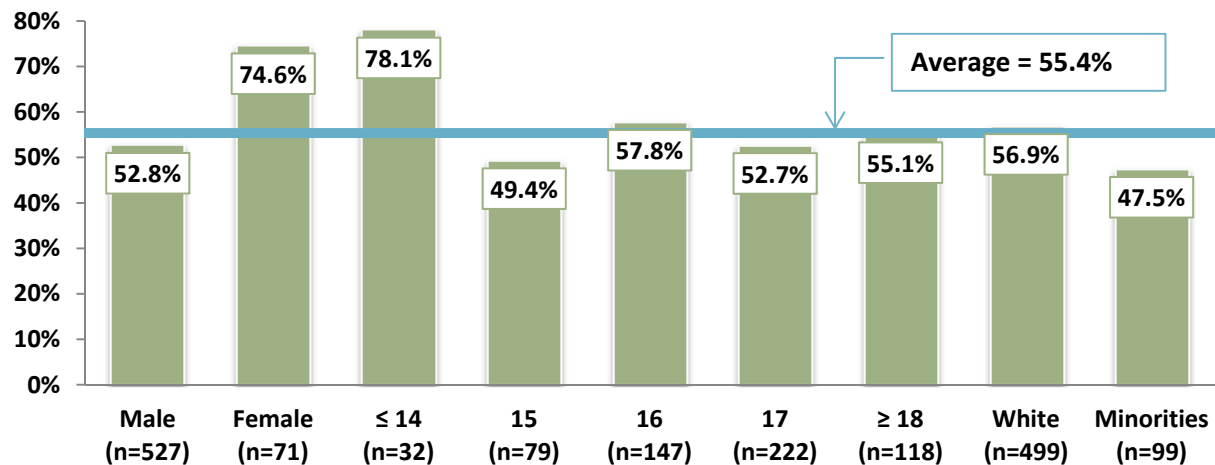
⁴³ Drug/alcohol and "other" class are not included in this analysis.

⁴⁴ $\chi^2(1, 598) = 12.139, p < .001$; Phi = .142

⁴⁵ $\chi^2(1, 598) = 8.857, p = .065$; Cramer's V = .122

⁴⁶ $\chi^2(1, 598) = 2.978, p = .084$; Phi = .071

Figure IV-6: Demographic Characteristics and Percent Committed with a Misdemeanor Charge (n=598)

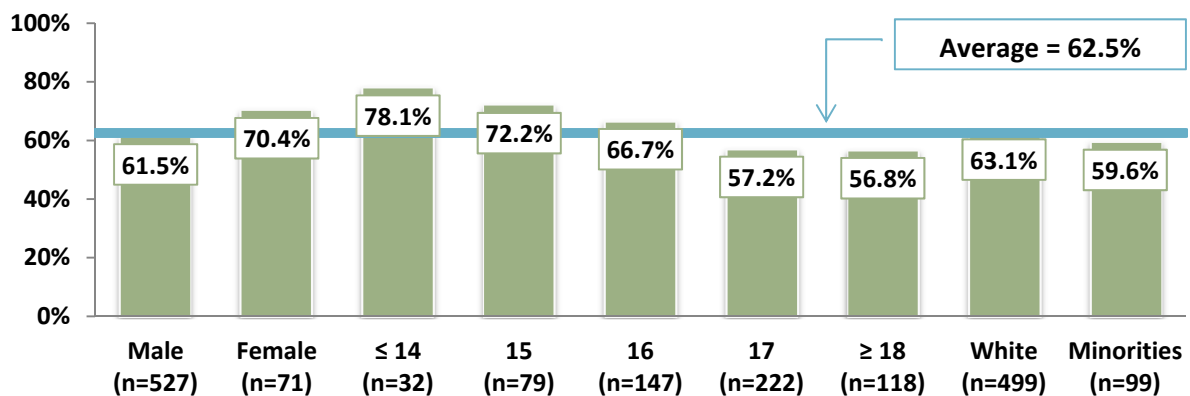


Community Reintegration

Community Reintegration and Demographic Characteristics

Overall, 62.5% of youth were released to community reintegration. There were statistically significant differences in the proportion of youth released to community reintegration by age⁴⁷. Approximately 78.1% of youth who were committed at 14 years of age or younger were eventually released to community reintegration, but this proportion decreased by age. Only 56.8% of youth committed at 18 years of age and older were eventually released to community reintegration. There were no statistically significant differences in release rates by gender or race.

Figure IV-7: Demographic Characteristics and Community Reintegration, 2006-2011 Cohorts (n=598)



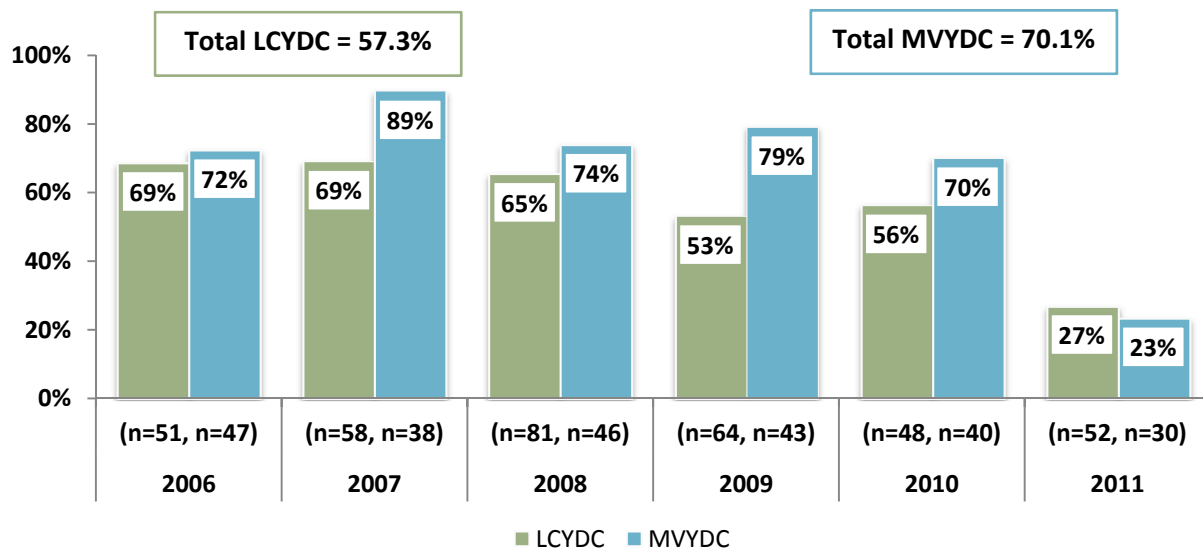
Community Reintegration and Facility

While 62.5% of youth were released to community reintegration, there were differences in rate by facility.

⁴⁷ $\chi^2(4, 598) = 11.868, p = .018$; Cramer's V = .141

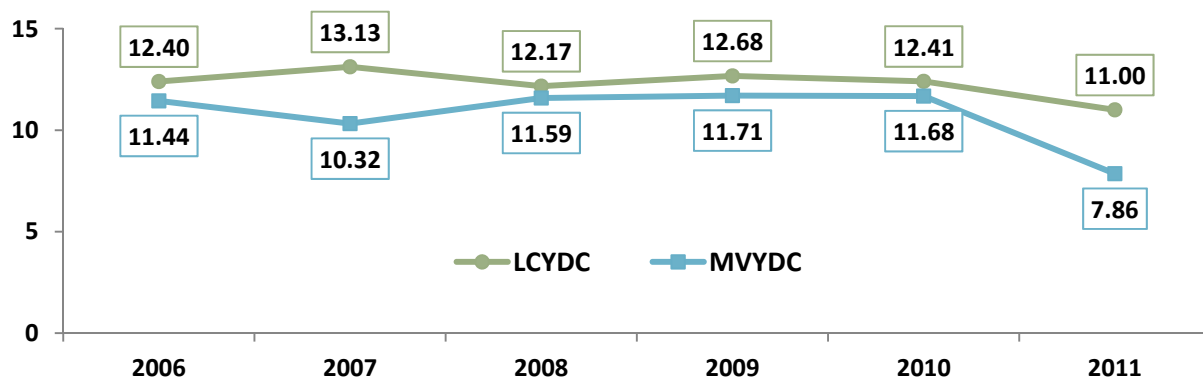
Approximately 70.1% of Mountain View Youth Development Center (MVYDC) youth were released to community reintegration, compared to 57.3% of Long Creek Youth Development Center (LCYDC) youth. This difference was statistically significant⁴⁸.

Figure IV-8: Community Reintegration by Facility



There is also a statistically significant difference between the two facilities in terms of how quickly youth were released to community reintegration⁴⁹. The average amount of time spent committed before release to community reintegration for MVYDC youth was 11.19 months, compared to 12.43 months for LCYDC youth.

Figure IV-9: Time in Months between Commitment and Community Reintegration, by Facility



⁴⁸ $\chi^2(1, 598) = 10.003, p = .002$; Phi = .129

⁴⁹ Independent t-test: $t(372) = 2.145, p = .033$

Community Reintegration and Recidivism

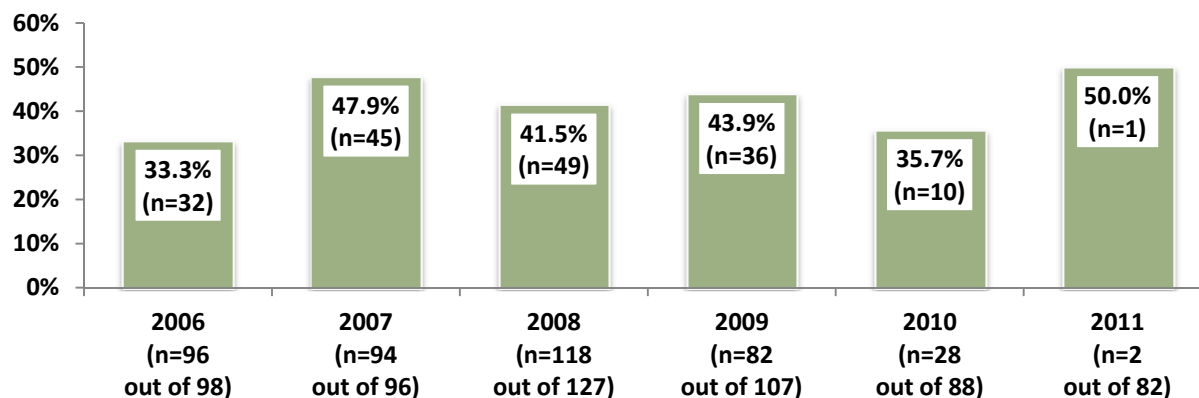
There was no correlation between community reintegration and recidivism. Overall 41.2% of youth recidivated within the first year following discharge from Division of Juvenile Services' supervision; 39.1% of youth released to community reintegration did so, compared to 45.3% of youth given a straight discharge. This is not statistically significant. Likewise, there was no correlation between facility and recidivism.

Recidivism

One-Year Rates

One-year recidivism rates are difficult to calculate when a large proportion of committed youth have not yet been discharged and/or been tracked for a full year. Almost one-third (29.8%) of the committed youth in this analysis have not yet met this cut point, so numbers reported here are sure to change. Among the four cohorts (2006-2009) that had 75% or more of their youth discharged for a year or more, the 2007 cohort had the highest one year recidivism rate at 47.9% followed by 2009 at 43.9%.

Figure IV-10: One-Year Recidivism Rates

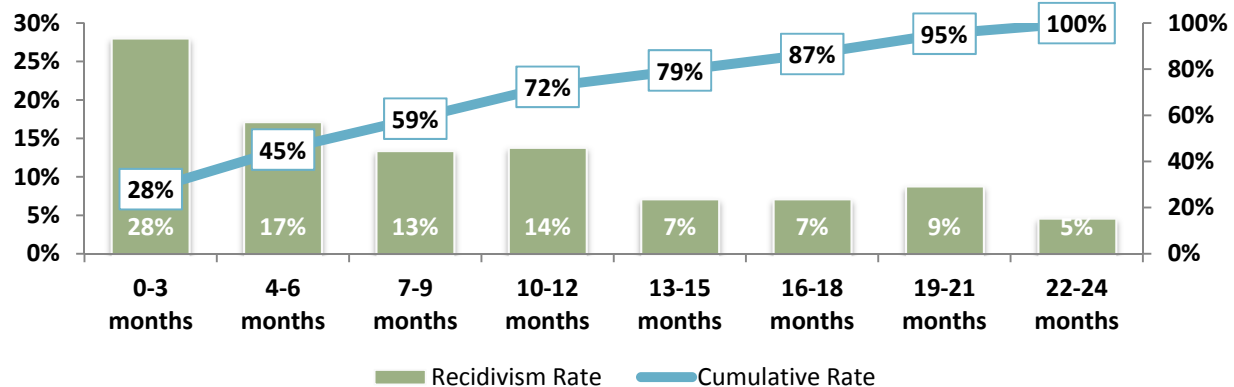


Note: Recidivism rate for the 2006 cohort may be higher than rate displayed in chart because no updates were provided for this cohort.

Time to Recidivate

A little over a quarter (28%) of youth who recidivated within the two-year tracking period did so within the first 3 months. More than half (59%) recidivated within 9 months, and more than three-quarters (79%) recidivated within 15 months. Overall, these data indicate that the rate of recidivism slows over time.

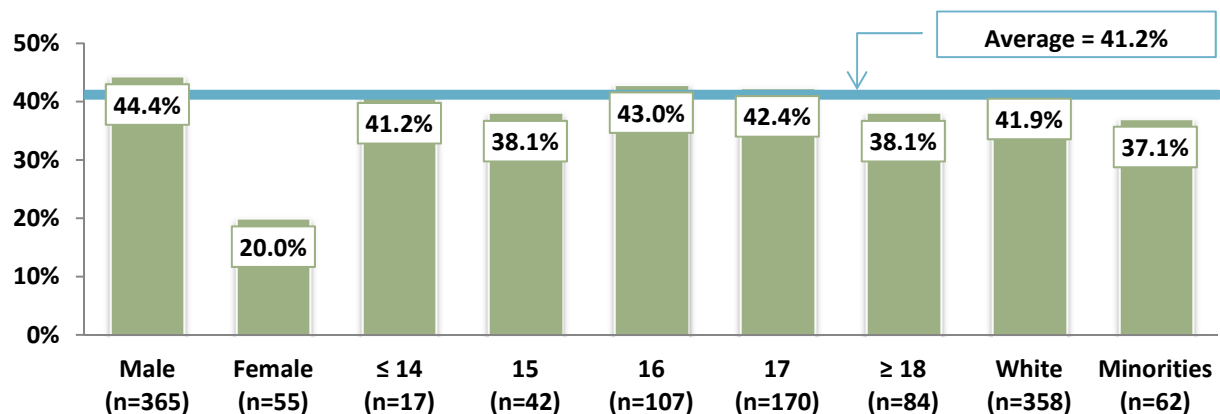
Figure IV-11: Time to Recidivate, 2006-2011 Cohorts



Recidivism by Demographic Characteristics

On average, 41.2% of youth recidivated within one year of discharge from commitment. This rate was lower, however, for females (20.0%)⁵⁰. While there were slight differences between age groups and racial groups, the differences were not statistically significant.

Figure IV-12: Recidivism by Demographic Characteristics



Recidivism by Offense Class and Type

There were no differences in the one-year recidivism rate by offense class or type.

Recidivism and Change in Offense Class⁵¹

For youth who recidivated, the percentage of misdemeanors and felonies decreased between first adjudicated offense and recidivating offense. The majority (53.4%) of all recidivating youth were initially charged with misdemeanor offenses. The percentage of youth who recidivated with misdemeanor charges was 74.6%.

⁵⁰ $\chi^2(1, 420) = 11.732, p = .001; \text{Phi} = .167$

⁵¹ The numbers reported here are slightly higher than numbers reported elsewhere in this brief because this analysis includes all youth for whom recidivating data are available regardless of time to recidivate. Some youth recidivated past the 2-year tracking period.

Of those recidivating youth who were initially charged with felony offenses (46.6%), the percentage of youth who recidivated with felony charges was 25.0%. Only one recidivating youth recidivated with a civil offense.

Table IV-6: First Adjudicated Offense Class vs. Recidivating Offense Class

		Commitment Offense Class					
		Misdemeanor		Felony		Total	
		#	%	#	%	#	%
Recidivating Offense Class	Civil	1	0.4%	--	--	1	.4%
	Misdemeanor	106	40.2%	91	34.5%	197	74.6%
	Felony	34	12.9%	32	12.1%	66	25.0%
	Total	141	53.4%	123	46.6%	264	100.0%

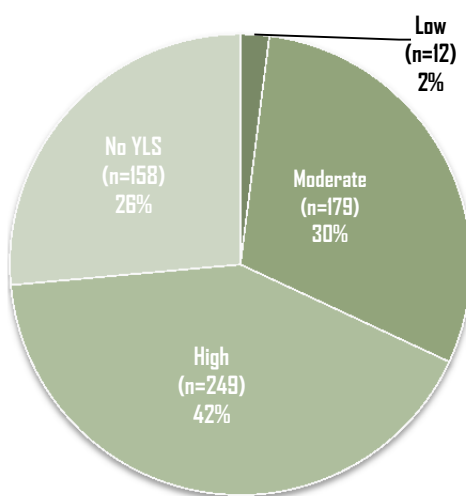
Recidivism by Risk Level

Completion rates for the Youth Level of Service/Case Management Inventory (YLS-CMI)⁵² for committed youth ranged between 66% and 82% over the cohort years, with an overall rate of 74%.

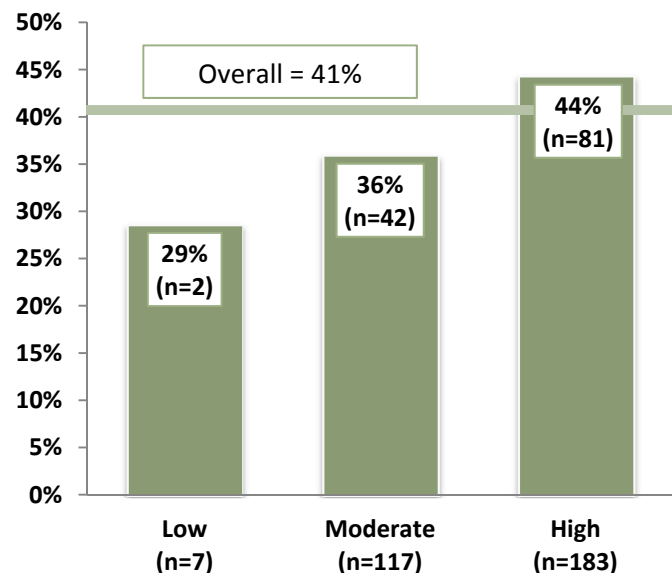
Of those youth who were assessed, a small percentage (3%) were assessed at low risk, 41% were assessed at moderated risk, and 57% were assessed at high risk. The average risk score was 23.2.

Of those youth who were assessed and tracked for one year, approximately 41% recidivated. Although the correlation between risk level and recidivism appears significant, there were too few low risk youth to test for statistical significance; as a result, the remaining analysis on risk and recidivism focus on moderate and high risk youth.

**Figure IV-13: Distribution of Risk Levels
2009-2011 Cohorts**



**Figure IV-14: One Year Recidivism by Risk Level
2006-2011 Cohorts**



⁵² The YLS-CMI is a risk/needs assessment and case management tool designed for use with youth.

Recidivism by Risk Level and Gender

There were no differences in risk scores or levels between males and females. There was, however, a statistically significant difference in recidivism between genders—45% of males recidivated while 20% of females did⁵³. In the female population, a greater proportion (26%) of moderate risk youth recidivated compared to the proportion of high risk youth who recidivated (16%). This could suggest that the YLS is not accurately assessing risk in the female population.

Figure IV-15: Distribution of Risk Levels by Gender
2006-2011 Cohorts

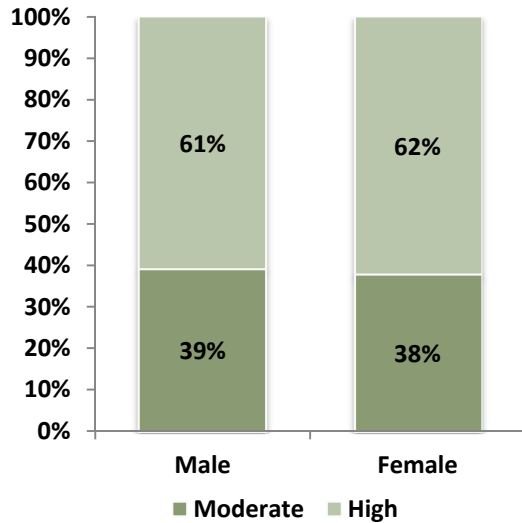
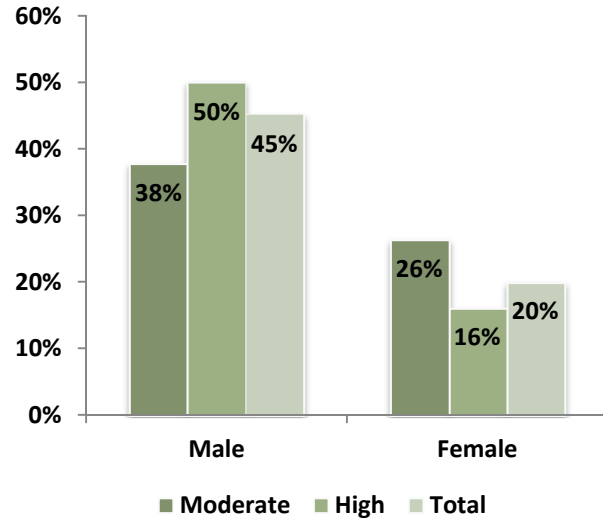


Figure IV-16: One-Year Recidivism by Risk Level and Gender
2006-2011 Cohorts



⁵³ $\chi^2(1, 307) = 10.620, p = .001; \text{Phi} = .186$

Recidivism by Risk Level and Race/Ethnicity

Compared to white youth, minority youth had significantly higher risk assessment scores⁵⁴. The average score for minority youth was 26.0, while the average score for white youth was 22.7. A large proportion, 78%, of minority youth were assessed at high level risk, while 58% of white youth were assessed at high risk level. Higher scores in minority youth did not result in higher levels of recidivism however; approximately 37% of minority youth recidivated, while 42% of white youth did so. This suggests that the YLS is not accurately assessing risk in the minority population.

Figure IV-17: Distribution of Risk Levels by Race/Ethnicity 2006-2011 Cohorts

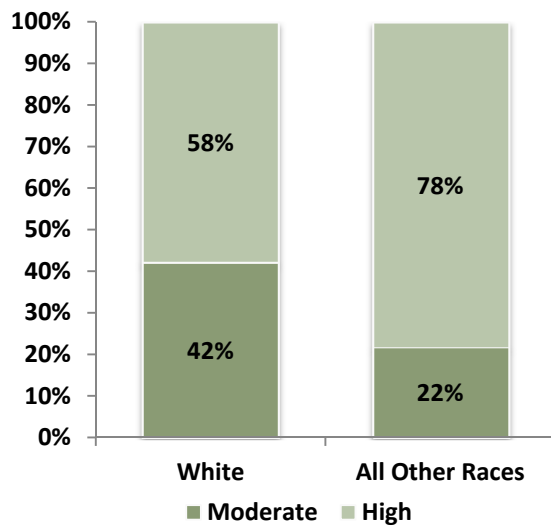
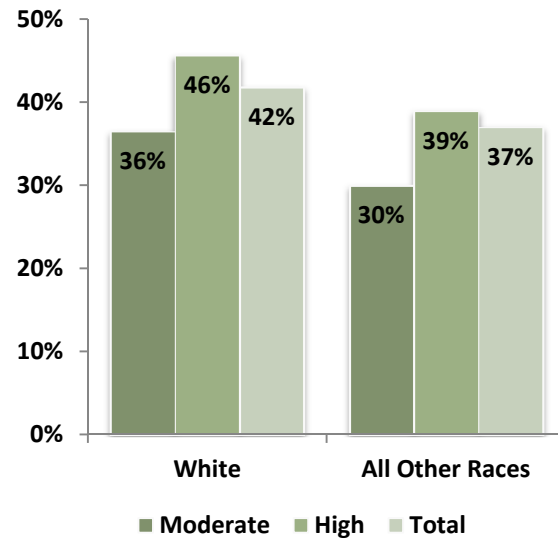


Figure IV-18: One-Year Recidivism by Risk Level and Race 2006-2011 Cohorts



⁵⁴ Independent t-test: $t(305) = 2.749, p = .006$

County Analysis

Description of County Populations, 2009-2011 Average

The following table presents data on the 3-year population average for 10- to 17-year-olds⁵⁵ and analyzes the average rate per 1,000 who were first committed in each county and statewide. Lincoln, Oxford, and Penobscot had the lowest commitment rates, at 0.11, 0.27, and 0.33 respectively. Aroostook, Sagadahoc, and Somerset had the highest commitment rates, at 1.03, 1.06, and 1.01 respectively. The average rate statewide was 0.71.

Table IV-7: Committed Youth Rates, by County

	Average 10- to 17-Year-Old Population per Year	Average Number Committed per Year	Average Committed Rate per 1,000
Lincoln	3,157	0	0.11
Oxford	6,175	2	0.27
Penobscot	14,084	5	0.33
Androscoggin	10,749	4	0.37
Piscataquis	1,704	1	0.39
Franklin	2,968	1	0.44
Waldo	3,886	2	0.51
Hancock	4,690	3	0.57
Statewide	130,678	92	0.71
Kennebec	12,127	9	0.71
Knox	3,672	3	0.73
Washington	3,116	2	0.75
York	20,429	18	0.86
Cumberland	27,899	27	0.96
Aroostook	7,097	7	1.03
Sagadahoc	3,454	4	1.06
Somerset	5,472	6	1.10

⁵⁵ Three-year averages were calculated using 2009-2011 population data obtained from the Easy Access to Juvenile Populations website for youth ages 10-17, accessed at <http://www.ojdp.gov/ojstatbb/ezapop>.

V. DISCHARGED YOUTH

Introduction

This brief analyzes data on youth who were adjudicated, placed under Department of Juvenile Services' (DJS) supervision for the first time, and then released from supervision at some point during the 2006-2011 calendar years. It includes analysis of youth demographics, offense class and type, Level of Service/Case Management Inventory (YLS-CMI) completion rates and risk levels, recidivism rates⁵⁶, and county-level analysis. For the purpose of this report, recidivism is defined in terms of whether an adjudicated youth is re-adjudicated (as a juvenile) or convicted (as an adult) for an offense committed following initial discharge.

2011 Cohort Description

Demographics

The 2011 cohort is the most recent cohort for which recidivism data are available. Almost three-quarters (74.9%) of the youth in this cohort were male, while slightly over one-quarter (25.1%) were female. Youth ages 18 and above made up the largest age group of discharged youth at 42.7%, followed by 17-year-olds at 24.6%, 16-year-olds at 14.2%, 15-year-olds at 11.4%, and youth ages 14 and younger at 7.0%. White youth made up 89.3% of discharged youth, while minority youth made up the remaining 10.7%.

Table V-1: Demographic Description, 2011 Cohort

Demographics	N	%
<i>Gender</i>		
Male	468	74.9%
Female	157	25.1%
<i>Age (at discharge)</i>		
14 and under	44	7.0%
15	71	11.4%
16	89	14.2%
17	154	24.6%
18 and above	267	42.7%
<i>Race</i>		
White Youth	558	89.3%
All Minority Youth	60	9.6%
Unknown	7	1.1%
<i>Total Youth</i>	625	100.0%

⁵⁶ Civil class recidivating offenses are not included in recidivism rates in this brief.

Offense Type and Class

While youth may be charged with more than one offense at the time of supervision, only the most serious offense associated with supervision is reported here. The majority of offenses, 81.2%, were misdemeanor offenses. Approximately half (50.6%) of misdemeanors were property offenses, 39.0% were personal offenses, 7.1% were drug and alcohol offenses, and 3.3% were “other” offenses⁵⁷. The remaining 18.7% of offenses associated with supervision were felony offenses. Approximately 59.0% of felonies were property offenses, 30.8% were personal offenses, 9.4% were drug and alcohol offenses, and the remaining 0.9% was an “other” offenses.

Table V-2: Misdemeanor & Felony Offense Descriptions, 2011 Cohort

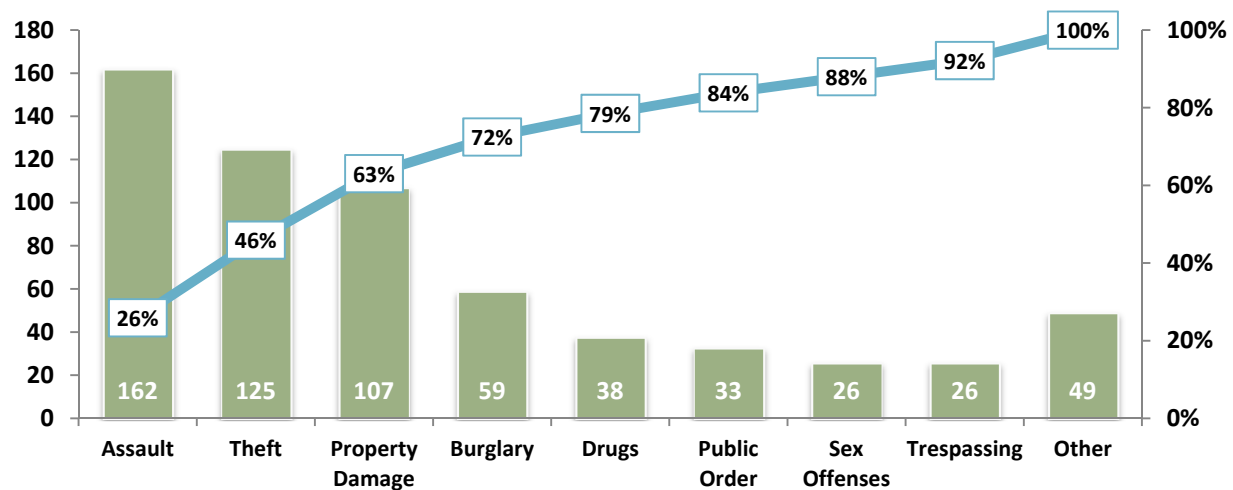
Offenses	N	%
<i>Misdemeanor</i>		
Personal	198	39.0%
Property	257	50.6%
Drugs/Alcohol	36	7.1%
Other	17	3.3%
Total Misdemeanor	508	100.0%
<i>Felony</i>		
Personal	36	30.8%
Property	69	59.0%
Drugs/Alcohol	11	9.4%
Other	1	0.9%
Total Felony	117	100.0
<i>Total Offenses</i>	625	100.0%

Offense Description

The most common offense associated with supervision was assault (26%), followed by theft (20%), property damage (17%), and burglary (9%). These four offenses made up nearly three-quarters (72%) of the charges.

⁵⁷ “Other” offenses include carrying concealed weapon, criminal attempts, obstruction, refusing to submit to arrest or detention, unsworn falsification, and violating a protective order.

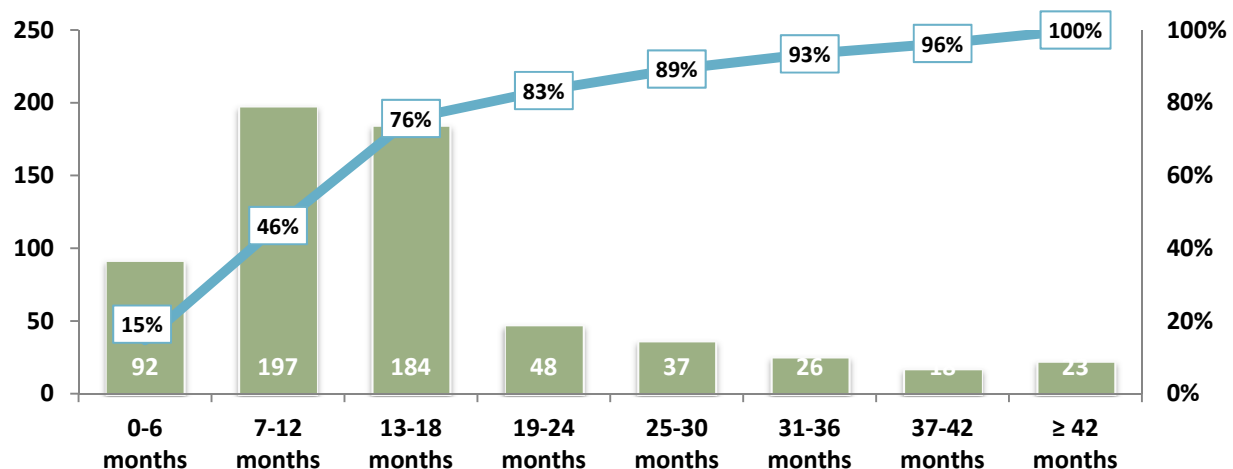
Figure V-1: Offense Descriptions, 2011 Cohort



Supervision Length

On average, youth were supervised for 14.5 months. This statistic, however, is skewed by a small number of youth who were supervised for an unusually long period of time. The median (or middle) amount of time that youth were supervised was 12 months. Approximately 46% of youth were supervised for 12 months or less, 83% were supervised for 24 months or less, and 93% were supervised for 36 months or less. The remaining 7% (n=41) were supervised for lengthier periods of time.

Figure V-2: Supervision Length, 2011 Cohort



Trends

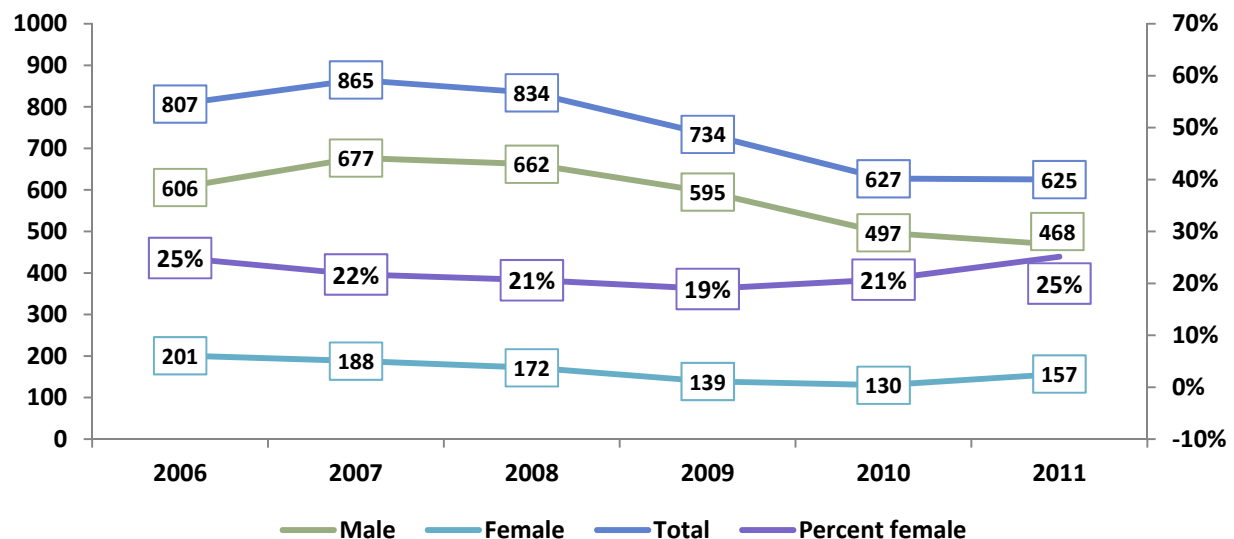
Number of Discharged Youth

The number of youth discharged from DJS supervision decreased between 2006 and 2011. In 2006, the number of youth discharged was 807, while in 2011 it was 625. This represents a 22.6% decrease in the number of youth discharged during the study period.

Gender

While there was a downward trend in the number of discharged youth, the trend continued through 2011 for males but not for females. In 2011, the number of discharged females increased. In that year as well as in 2006, the initial year of the study, the proportion of discharged youth that were female was 25%.

Figure V-3: Number of Discharged Youth, by Cohort



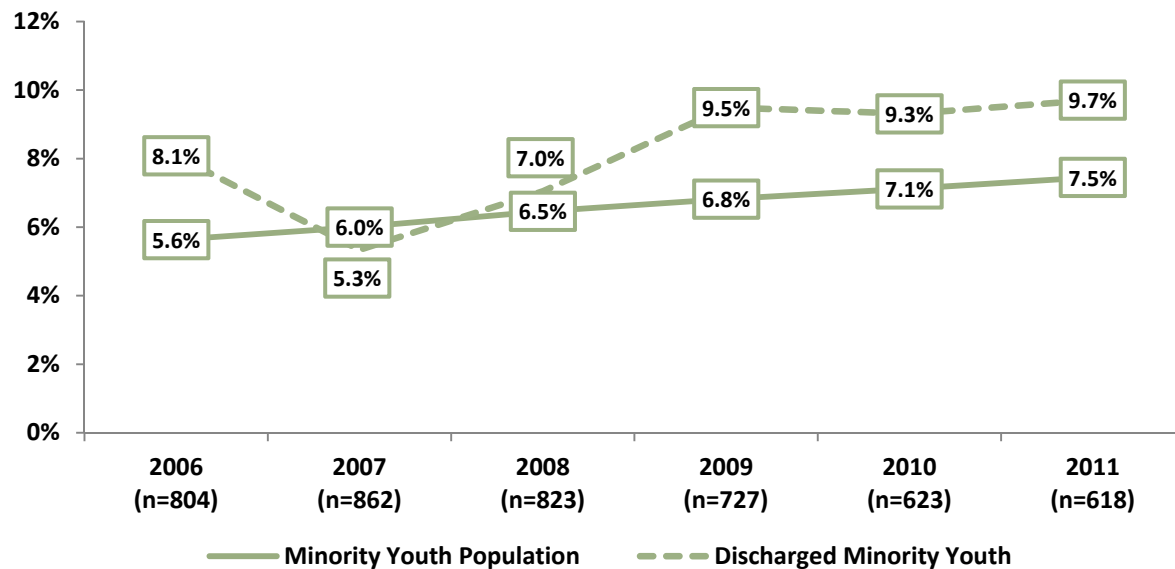
Race

Among the cohorts, the 2011 cohort had the largest percentage of minority youth (9.7%), while the 2007 cohort had the smallest percentage (5.3%). The differences between cohorts are slight but statistically significant⁵⁸ and are not due to an increase in the number of discharged minority youth. The overall number of discharged minority youth has remained stable from 2006 to 2011 (from 65 in 2006, to 60 in 2011). Rather, the differences are due to a 24.5% decrease in the number of discharged white youth over that same time period (from 739 in 2006, to 558 in 2011). The increase in the proportion of minority youth in the cohorts cannot be explained by an increase in the minority population in Maine.

⁵⁸ $\chi^2 (5, 4457) = 15.453, p = .009; \text{Phi} = .059$

While the proportion of minority youth in the state increased from 2006 to 2011, the proportion of minority youth in the cohorts remained higher than the state proportion for all but one year.⁵⁹

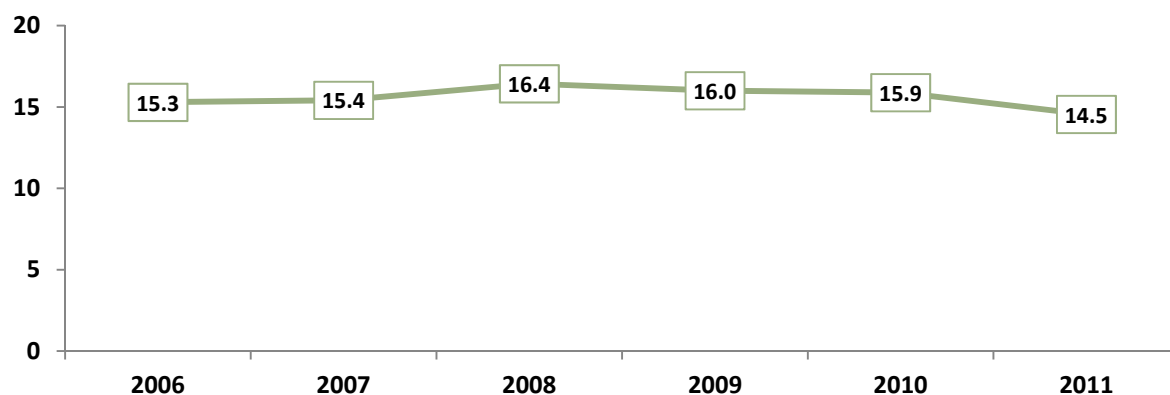
Figure V-4: Percent Minority Youth in Cohort vs. Percent Minority Youth in Population



Time Spent on Supervision

The amount of time youth spent on supervision changed over the years of analysis, from a high of 16.4 months in 2008 to a low of 14.5 months in 2011. While the difference in time between these two cohorts is small, it represents an 11.5% decrease in time and is statistically significant⁶⁰. Overall, the time on supervision has decreased by 4.9% from 2006 to 2011.

Figure V-5: Time (in Months) Spent on Supervision, by Cohort



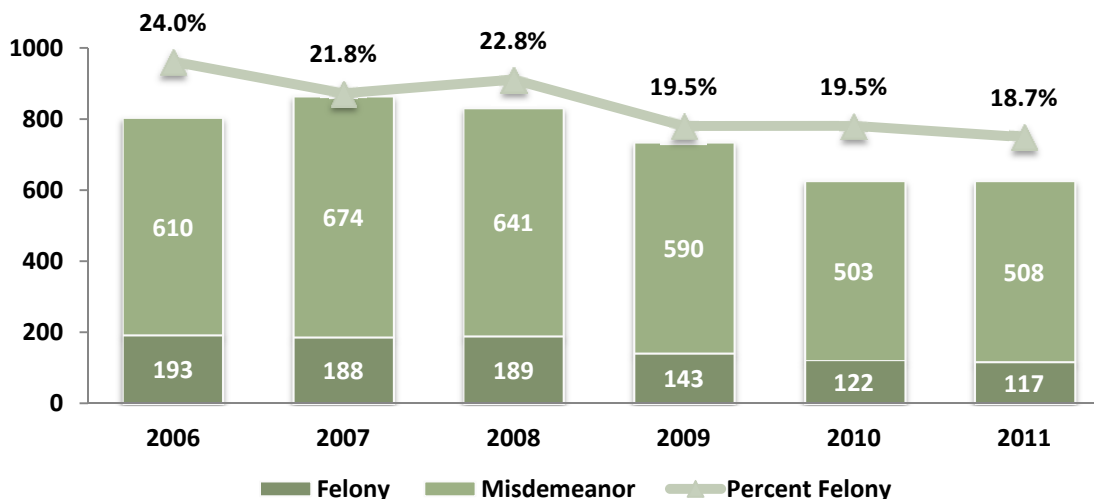
⁵⁹ Population data were obtained from the Easy Access to Juvenile Populations website for youth ages 10-17, accessed at <http://www.ojdp.gov/ojstatbb/ezapop>.

⁶⁰ Independent t-test: $t(1417) = 3.07, p = .002$

Offense Class

The number of felony charges decreased by more than a third (39.4%) from 2006 to 2011, while the number of misdemeanor charges decreased by 16.7%. The proportion of felony and misdemeanor charges fluctuated slightly over the years of analysis, but these changes are not statistically significant⁶¹. Youth with felony charges accounted for 24.0% of supervised youth in 2006 and 18.7% in 2011⁶².

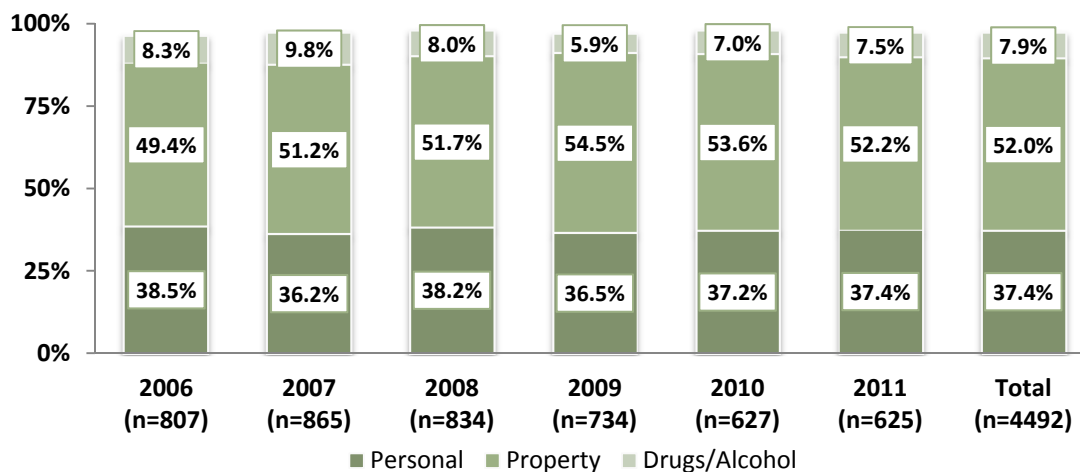
Figure V-6: Offense Class, by Cohort



Offense Type

A little over half (52.0%) of the most serious offenses associated with supervision over all 6 cohort years were property offenses. An additional 37.4% of most serious offenses were personal offenses, and 7.9% were drug and alcohol offenses.

Figure V-7: Distribution of Offense Types, by Cohort



Note: Percentages do not equal 100% due to the exclusion of "other" offense types.

⁶¹ $\chi^2 (5, 4478) = 9.863, p = .079$

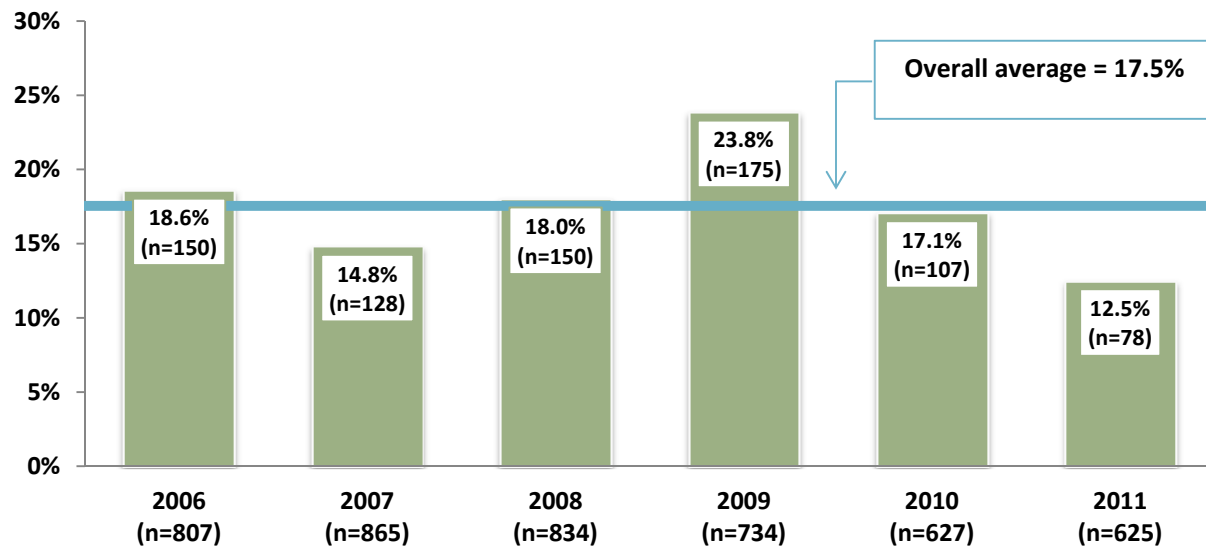
⁶² Cases in which civil charges are the most serious offense are small in number and have not been included in this analysis.

Recidivism

One-Year Rates

While the one-year recidivism rate for the 2011 cohort is currently the lowest, that rate may change as updates become available⁶³. Not counting this most recent cohort, the lowest rate of recidivism occurred in the 2007 cohort at 14.8%, while the highest rate occurred in the 2009 cohort at 23.8%. The changes in recidivism rates in the 2006-2010 cohorts are statistically significant⁶⁴.

Figure V-8: One-Year Recidivism, by Cohort



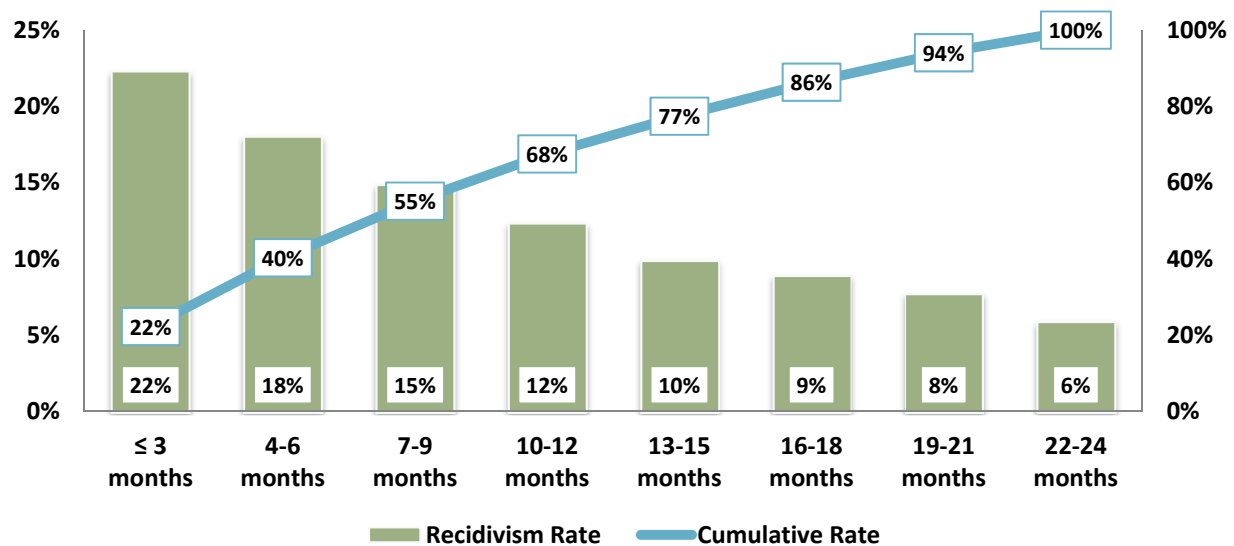
Time to Recidivate

Approximately 22.3% of youth who recidivated within the two-year-tracking period did so within the first 3 months. More than half (55%) recidivated within 9 months, and more than three-quarters (77%) recidivated within 15 months. Each consecutive recidivism rate is lower than the previous one, indicating that fewer youth recidivate as time progresses.

⁶³ Some youth may have committed offenses during the one-year time period that have not yet been adjudicated. As this occurs, update will be made and rates will change accordingly.

⁶⁴ $\chi^2(4,3867) = 22.846, p < .001$; Phi = .077

Figure V-9: Time to Recidivate, 2006-2009 Cohorts



Time to Recidivate by Cohort (2006-2011)

The following table presents numbers and rates of recidivism for each cohort at the six-month, one-year, eighteen-month, and two-year time marks. Among cohorts for whom recidivism data is not apt to change (2006-2009), the proportion of youth who did not recidivate within two years was between 68.1% for the 2009 cohort and 75.6% for the 2007 cohort.

Table V-3: Recidivism by Time, 2006-2011 Cohorts

	Six Months		One Year		Eighteen Months		Two Years		Did not Recidivate		Total Cohort	
	#	%	#	%	#	%	#	%	#	%	#	%
2006 Cohort	91	11.3%	59	7.3%	36	4.5%	29	3.6%	592	73.4%	807	100%
2007 Cohort	77	8.9%	51	5.9%	51	5.9%	32	3.7%	654	75.6%	865	100%
2008 Cohort	84	10.1%	66	7.9%	60	7.2%	36	4.3%	588	70.5%	834	100%
2009 Cohort	109	14.9%	66	9.0%	27	3.7%	32	4.4%	500	68.1%	734	100%
2010 Cohort*	78	12.4%	29	4.6%	18	2.9%	12	1.9%	490	78.1%	627	100%
2011 Cohort**	60	9.6%	18	2.9%	3	0.5%	1	0.2%	543	86.9%	625	100%

* Eighteen month and two-year recidivism rates for the 2010 cohort are expected to change as updates are made.

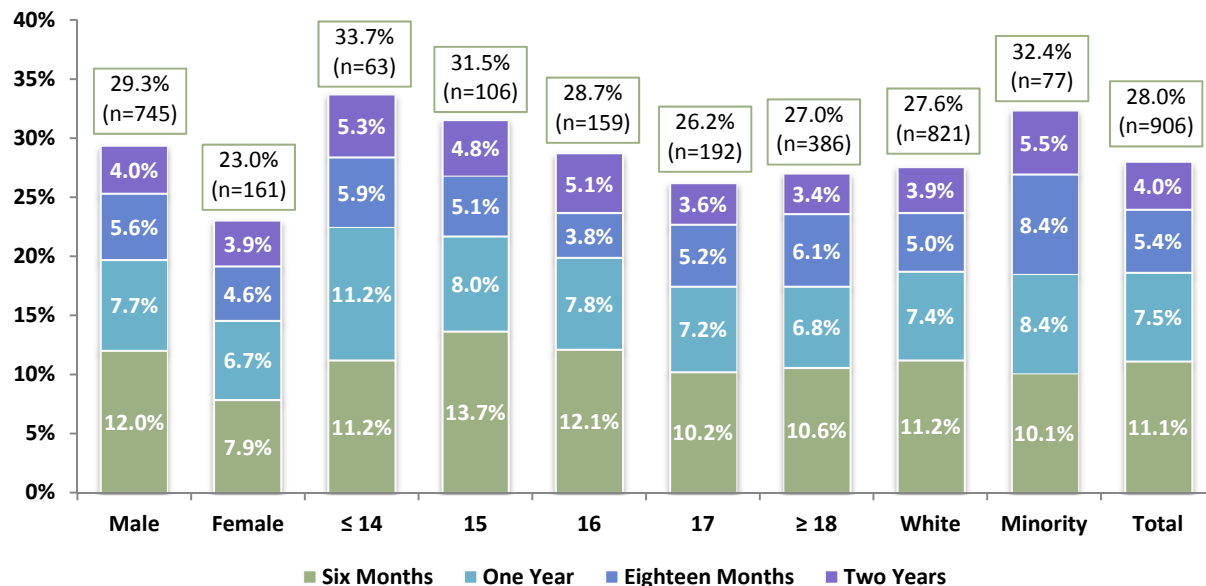
** One-year, eighteen-month, and two-year recidivism rates for the 2011 cohort are expected to change as updates are made.

Recidivism by Demographic Characteristics

The 2009 cohort is the most recent year for which recidivism data are not expected to change with updates. For the 2006-2009 cohorts, males recidivated at a higher rate (29.3%) than females (23.0%), and this difference was statistically significant⁶⁵. Youth who were 14 years of age or younger recidivated at a slightly higher rate (33.7%) than youth in all other age groups.

These differences are not statistically significant. Minority youth recidivated at a slightly higher rate (32.4%) than white youth (27.6%), but this difference was not statistically significant either.

Figure V-10: Recidivism by Demographic Characteristics, 2006-2009 Cohorts



⁶⁵ $\chi^2(4, 3240) = 13.477, p = .009; \text{Phi} = .064$

Recidivism and Offense Class⁶⁶

For youth who recidivated, the percentage of misdemeanors and felonies decreased between first adjudicated offense and recidivating offense. The majority (78.1%) of all recidivating youth were initially charged with misdemeanor offenses. The percentage of youth who recidivated with misdemeanor charges was 71.9%. An additional 21.5% of recidivating youth were initially charged with felony offenses, and the percentage of youth who recidivated with felony charges was 17.5%. Thus, there were decreases in both misdemeanor and felony charges. Conversely, there was an increase in the proportion of youth charged with civil offenses. Initially a small proportion of youth (0.5%) were charged with civil offenses, while a larger proportion (10.6%) of recidivating youth were charged with civil offenses.

Table V-4: First Adjudicated Offense Class vs. Recidivating Offense Class, 2006-2011 Cohorts

		First Adjudicated Offense Class							
		<i>Civil</i>		<i>Misdemeanor</i>		<i>Felony</i>		<i>Total</i>	
		#	%	#	%	#	%	#	%
Recidivating Offense Class	<i>Civil</i>	0	0.0%	138	8.9%	26	1.7%	164	10.6%
	<i>Misdemeanor</i>	5	0.3%	874	56.5%	234	15.1%	1113	71.9%
	<i>Felony</i>	2	0.1%	196	12.7%	72	4.7%	270	17.5%
	Total	7	0.5%	1208	78.1%	332	21.5%	1547	100.0%

Recidivism by Risk Level

Completion rates for the Youth Level of Service/Case Management Inventory (YLS-CMI)⁶⁷ for discharged youth hovered between 77% and 84% over the years of analysis, with an overall rate of 80%.

Of those youth who were assessed, 26% were assessed at low risk, 43% were assessed at moderate risk, and 11% were assessed at high risk. The average risk score was 13.03.

Of those youth who were assessed, approximately 18% recidivated. There were, however, statistically significant differences in the rate of recidivism by risk level⁶⁸. Approximately 12% of youth who had low risk scores recidivated, 19% of youth with moderate risk scores recidivated, and 25% of youth with high risk scores recidivated.

⁶⁶ The numbers reported here are slightly higher than numbers reported elsewhere in this brief because this analysis includes all youth for whom recidivating data are available regardless of time to recidivate. Some youth recidivated past the 2-year tracking period.

⁶⁷ The YLS-CMI is a risk/needs assessment and case management tool designed for use with youth.

⁶⁸ $\chi^2(2, 3594) = 46.416, p < .001$; Phi = .114

Figure V-11: Distribution of Risk Levels
2006-2011 Cohorts

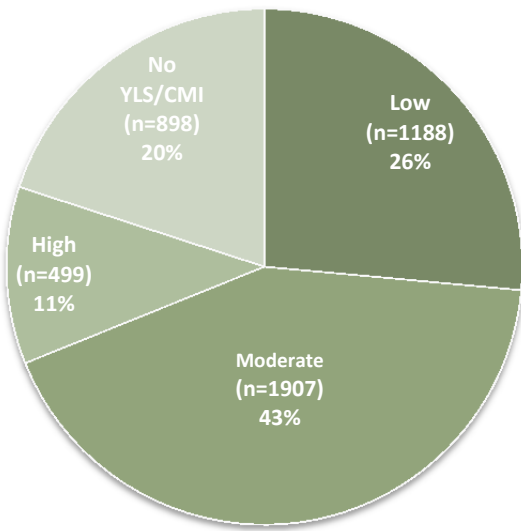
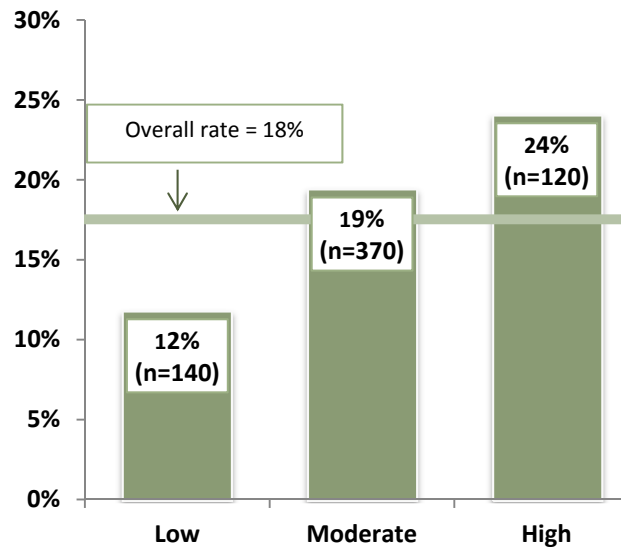


Figure V-12: One-Year Recidivism by Risk Level
2006-2011 Cohorts



Recidivism by Risk Level and Gender

There were differences between males and females in terms of risk scores and levels. The average score for males was 12.63, while the average score for females was 14.45. This difference is statistically significant⁶⁹. Despite higher scores and levels, females did not recidivate at a higher rate. Overall, 15% of females recidivated within the one-year tracking period, compared to 18% of boys. Furthermore, in the female population a greater proportion (17%) of moderate risk youth recidivated compared to the proportion of high risk youth who did so (15%). This could suggest that the YLS is not accurately predicting risk in the female population.

⁶⁹ Independent t-test: $t(3592) = 5.718, p < .001$

Figure V-13: Distribution of Risk Levels by Gender
2006-2011 Cohorts

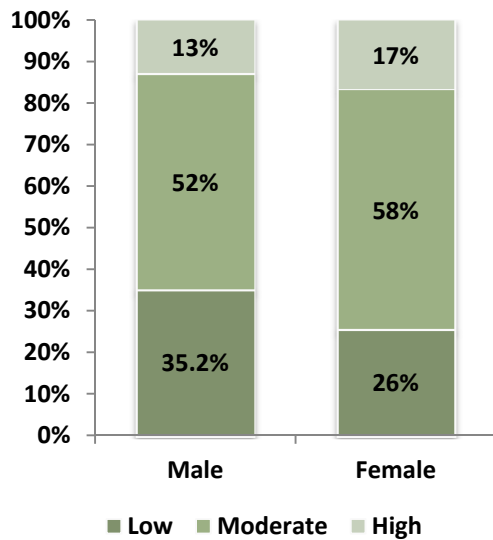
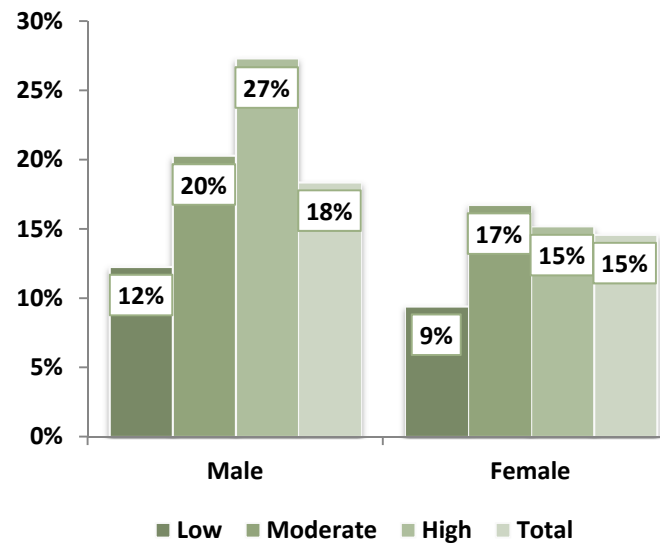


Figure V-14: One-Year Recidivism by Gender and Risk Level
2006-2011 Cohorts



Recidivism by Risk Level and Race/Ethnicity

There were differences between white and minority youth in terms of risk scores and levels. The average score for white youth was 12.83, while the average score for minority youth was 15.53. This difference is statistically significant⁷⁰. Despite higher scores and levels, minority youth did not recidivate at a higher rate. Overall, 18% of white youth recidivated within the one-year tracking period, compared to 17% of minority youth. This could suggest that the YLS is not accurately predicting risk in the minority population.

Figure V-15: Distribution of Risk Levels by Race/Ethnicity,
2006-2011 Cohorts

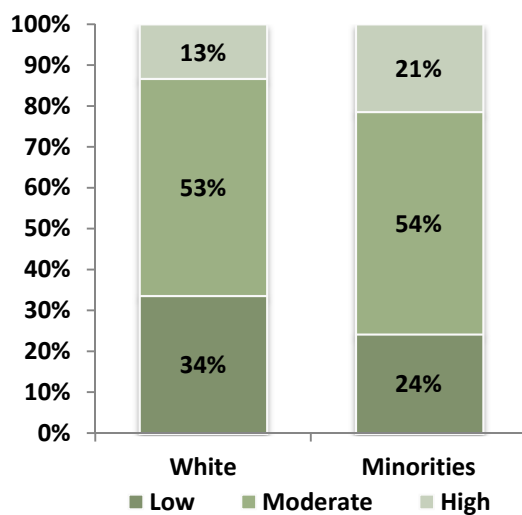
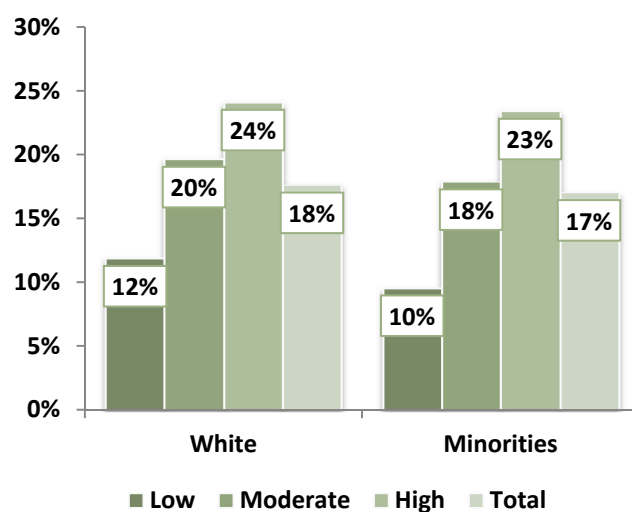


Figure V-16: One-Year Recidivism by Race/Ethnicity and Risk Level,
2006-2011 Cohorts



⁷⁰ Independent t-test: $t(3567) = 5.652, p < .001$

County Analyses

Description of County Populations (2009-2011 Average)

The following table presents data on the 3-year population average for 10- to 17-year-olds⁷¹ and analyzes the average rate per 1,000 juveniles who were first discharged in each county and statewide. Piscataquis, Oxford, and Penobscot had the lowest discharge rates, at 1.6, 1.7, and 3.2 respectively. Waldo, Somerset, and Sagadahoc had the highest discharge rates, at 6.9, 7.6, and 14.5 respectively. The average statewide was 5.1.

Table V-5: Description of County Population (2009-2011 Average)

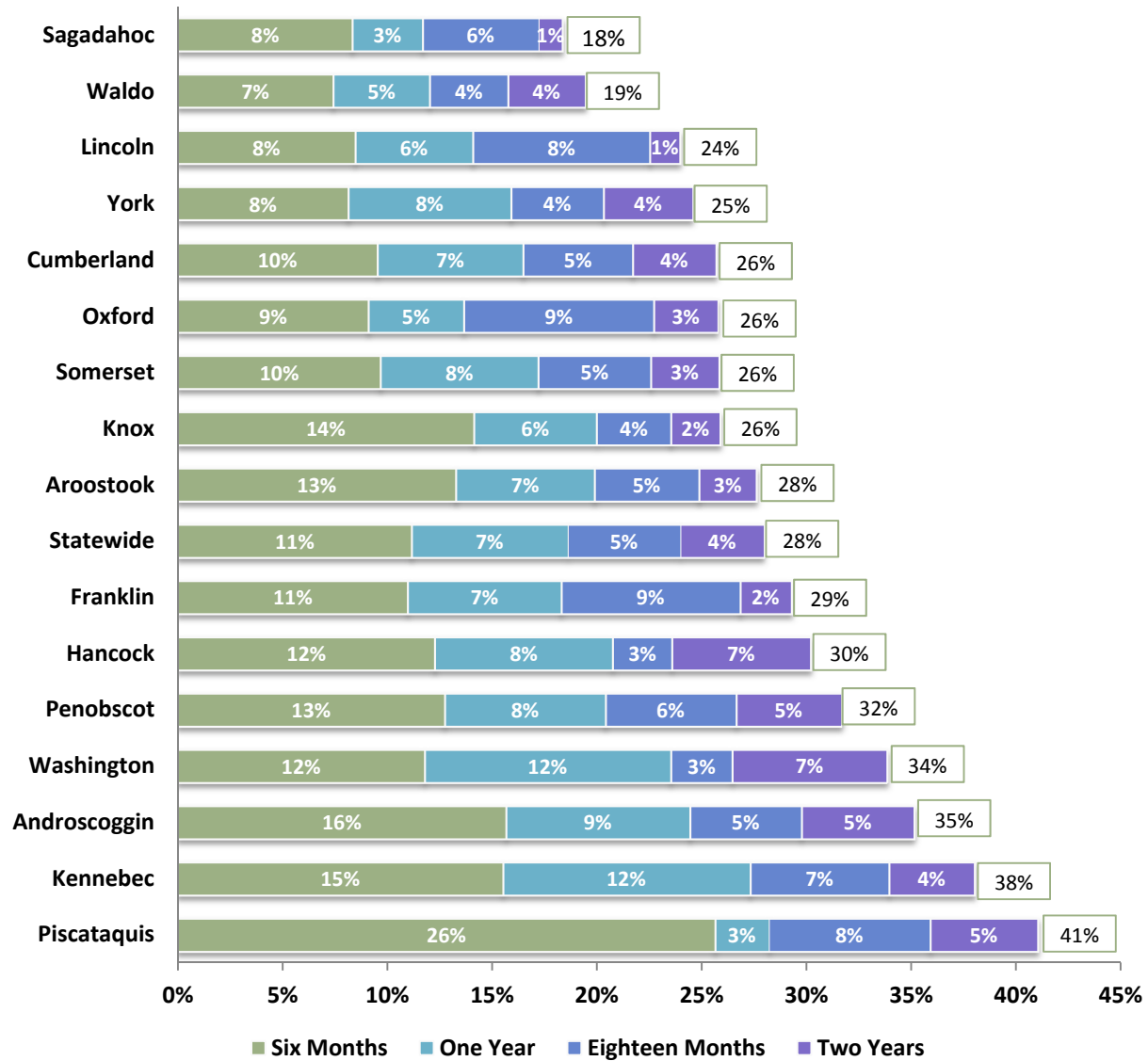
Discharge County	Average 10- to 17-Year-Old Population per Year	Average Number Discharged per Year	Average Discharged Rate per 1,000
Piscataquis	1,704	3	1.6
Oxford	6,175	11	1.7
Penobscot	14,084	45	3.2
Hancock	4,690	17	3.7
Androscoggin	10,749	44	4.1
Washington	3,116	16	5.0
Statewide	130,678	662	5.1
Kennebec	12,127	62	5.1
Cumberland	27,899	144	5.1
York	20,429	107	5.2
Franklin	2,968	16	5.3
Knox	3,672	21	5.6
Aroostook	7,097	41	5.8
Lincoln	3,157	19	6.1
Waldo	3,886	27	6.9
Somerset	5,472	41	7.6
Sagadahoc	3,454	50	14.5

⁷¹ Three-year averages were calculated using 2009-2011 population data obtained from the Easy Access to Juvenile Populations website for youth ages 10-17, accessed at <http://www.ojdp.gov/ojstatbb/ezapop>.

Recidivism by Time

For the 2006 to 2009 cohorts, youth in Sagadahoc County had the lowest recidivism rate (18%), and Piscataquis County had the highest rate (41%). Approximately 28% of all youth recidivated within the two-year tracking period statewide.

Figure V-17: Recidivism Rates by County, 2006-2009 Cohorts



One-Year Recidivism Rate by Cohort

Recidivism rates varied from county to county, but they also appear to vary considerably within any given county from year to year. In part this is due to the small number of youth who were discharged in some counties. When base numbers are small, small changes in the number of recidivating youth result in large changes in the percent. Nevertheless, there were real changes in the one-year recidivism rate from one year to another, as evidenced by statewide rates (see Figure V-8).

Table V-6: One-Year Recidivism Rates, by Cohort

County (total # tracked)	2006	2007	2008	2009	2010	Total
Androscoggin (n=305)	21.2%	21.3%	31.3%	24.5%	27.9%	24.9%
Aroostook (n=221)	18.4%	13.3%	18.6%	29.5%	15.0%	19.0%
Cumberland (n=766)	18.2%	10.5%	15.7%	21.8%	20.7%	17.2%
Franklin (n=93)	20.8%	5.3%	15.0%	31.6%	9.1%	17.2%
Hancock (n=127)	12.5%	10.7%	31.0%	35.3%	14.3%	19.7%
Kennebec (n=328)	30.9%	23.1%	24.1%	31.5%	22.8%	26.5%
Knox (n=114)	27.8%	23.1%	7.4%	28.6%	10.3%	17.5%
Lincoln (n=95)	6.3%	15.8%	20.0%	12.5%	8.3%	12.6%
Oxford (n=73)	12.5%	4.8%	23.5%	16.7%	28.6%	15.1%
Penobscot (n=368)	19.8%	18.3%	17.5%	27.1%	13.3%	19.8%
Piscataquis (n=42)	16.7%	30.0%	33.3%	40.0%	0.0%	26.2%
Sagadahoc (n=231)	12.2%	10.5%	9.3%	14.0%	11.8%	11.7%
Somerset (n=233)	16.7%	13.8%	10.9%	28.3%	17.0%	17.2%
Waldo (n=138)	12.5%	10.0%	7.4%	17.2%	20.0%	13.8%
Washington (n=78)	18.8%	14.3%	30.8%	33.3%	20.0%	23.1%
York (n=655)	15.1%	13.5%	15.8%	19.8%	12.4%	15.4%
Statewide (n=3,867)	18.6%	14.8%	18.0%	23.8%	17.1%	18.4%

Acknowledgments

The 2013 Juvenile Recidivism Report was produced through a cooperative agreement between the Maine Department of Corrections, Juvenile Services Division and the Maine Statistical Analysis Center at the Muskie School of Public Service, University of Southern Maine.

MAINE DEPARTMENT OF CORRECTIONS, DIVISION OF JUVENILE SERVICES

Bartlett Stoodley
Colin O'Neill

Chris Coughlin
Galan Williamson

UNIVERSITY OF SOUTHERN MAINE MUSKIE SCHOOL OF PUBLIC SERVICE

Report Author

Robyn Dumont, Research Analyst, Muskie School of Public Service

Peer Review/Editing

Erica King, Policy Associate, Muskie School of Public Service
George Shaler, Research Associate, Muskie School of Public Service

Layout and Design

Sheri Moulton, Project Assistant, Muskie School of Public Service

Funding Provided by the Maine Department of Corrections, Division of Juvenile Services. For More Information about this Report, Call (207)287-4378



©Maine Department of Corrections
Division of Juvenile Services

UNIVERSITY OF SOUTHERN MAINE
Muskie School of Public Service

This report is available on the
Maine Statistical Analysis Center Website at:
<http://muskie.usm.maine.edu/justiceresearch>
or by calling: 207.780.5871



University of Southern Maine
PO Box 9300
Portland, Maine 04104-9300
www.muskie.usm.maine.edu

A member of the University of Maine System