

PART  
One

ART WORK  
OF

Aroostook County

MAINE

PUBLISHED IN NINE PARTS

THE W. H. PARISH PUBLISHING CO.

R-974.1 P

NOV 14 '72



R

974.1

P233a

1. Maine - History

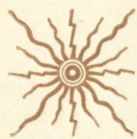


ART WORK

...OF...

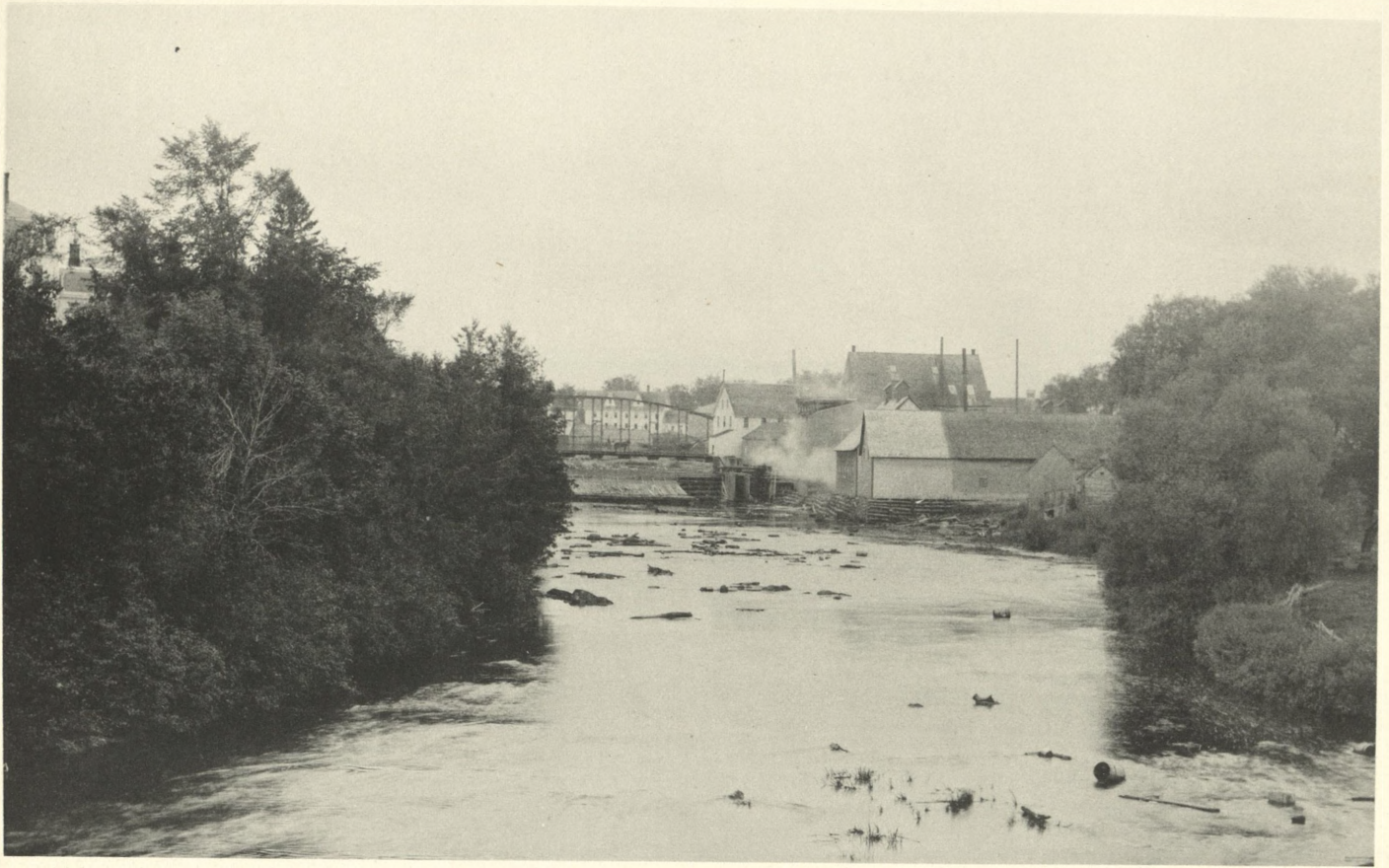
Argoostook County,

MAINE.



CHICAGO:  
THE W. H. PARISH PUBLISHING CO.  
1895.





ON MEDUXNEKEAG RIVER, HOULTON.

## Historical Sketch

OF

## AROOSTOOK COUNTY.

**A**ROOSTOOK county is situated in the northeastern part of the State of Maine and is the most northerly portion of the United States. It is bounded on the east by the province of New Brunswick, on the north and west by the province of Quebec and on the south by Somerset, Penobscot and Washington counties in the State of Maine. It is a whole state in itself, having an area of 6,800 square miles, larger than the states of Connecticut and Delaware or Connecticut and Rhode Island combined. Its population in 1890 was 49,589, and at the present time (1895) it is about 60,000. This immense county is divided into 181 townships, of which there are now 36 incorporated towns and 32 organized plantations. The county was incorporated March 16th, 1839. Its natural advantages and resources are unsurpassed. The Saint John river has its rise in Somer-





METHODIST EPISCOPAL CHURCH, HOULTON.





ROADWAY ON AROOSTOOK RIVER NEAR FORT FAIRFIELD. .





RESIDENCE OF SIMON FRIEDMAN, HOULTON.



RESIDENCE OF HON. LLEWELLYN POWERS, HOULTON.





VIEW ON NICKERSON LAKE, HOULTON.





VIEW ALONG WAGON ROAD NEAR CARIBOU.





MAIN STREET, HOULTON.











